

The seal of Georgetown University is a large, light blue watermark on the left side of the slide. It features an eagle with wings spread, holding a shield with vertical stripes and a banner in its beak that reads "UTRAQUE UNUM". Above the eagle is a lyre. The seal is surrounded by a laurel wreath. The Latin text "DOMACI IN MARYLANDIA" is visible at the top and "GEORGIOPOLITANUM" at the bottom of the seal's border.

Georgetown University

Planning 102

Information Session

March 19, 2013

GEORGETOWN
UNIVERSITY

Planning 102



Planning 102 - Agenda

- Our Context for Master Planning
- Planning Principles
- Undergraduate Housing Sites
- Transportation Options
- Master Plan – Next Steps
- My Campus
- Planning and Facilities Management Project Update
- GUTS Improvement
- Q&A

Planning 102

Our Team

- Georgetown University
 - Lauralyn Lee, AVP of Community Engagement and Strategic Initiatives
 - Gina Bleck, AVP, Planning and Project Management
 - Robin Morey, VP of Planning and Facilities Management
- Forest City Washington
 - Tom Archer
 - Susan Moore
- Sasaki
 - Ricardo Dumont
 - Greg Janks
 - Maggie Dolan

Our Context for Master Planning

- How did we get here?
(a.k.a., 60 seconds of relevant context to help this all make sense)
- What are we trying to achieve?
(a.k.a., preview of all the neat stuff you are about to hear)
- How do we intend to achieve it?
 - Transparent, collaborative planning process
 - Georgetown Community Partnership

Planning Principles

- Grow academic programs
- Develop main campus as a more residential “living & learning” community
- Sustain modern efficient academic medical center
- Employ smart growth strategies
- Undertake collaborative planning process

Planning the “Living & Learning” Campus

- More undergrads housed on-campus
- Create additional on-campus social experiences
- Improve recreation + athletics
- Enhance on-campus green space
- Improve transportation

Undergraduate Housing Sites

How can Georgetown best meet its goals of a more residential campus and new and creative transportation solutions, while furthering principles of sustainability and preserving future development opportunities?

Undergraduate Housing Sites Demand

Fall 2013 Magis Row relocation

65

Fall 2015 neighborhood relocation

385

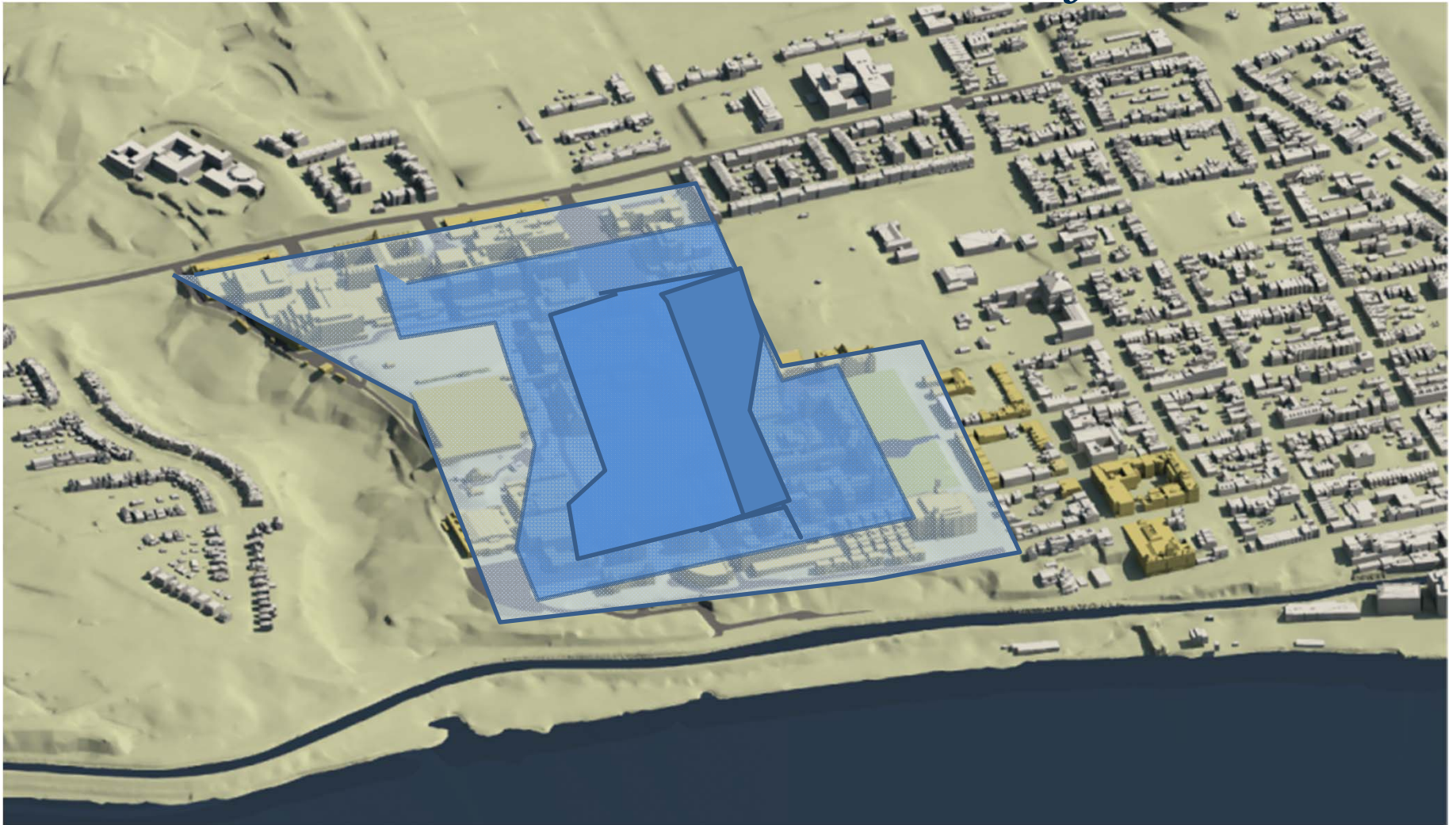
Short-term need

450

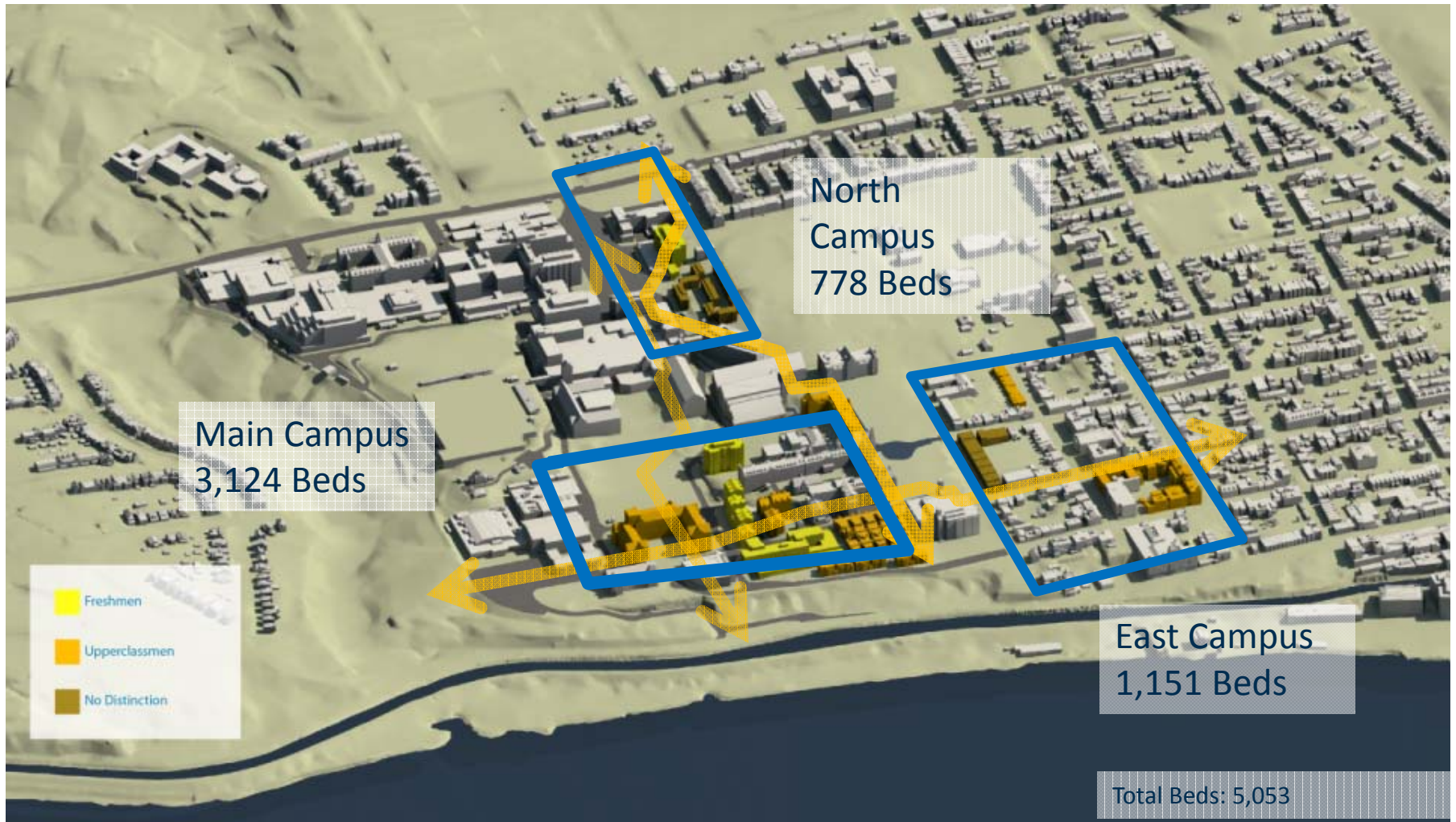
Additional Long-Term Need for 90%

244

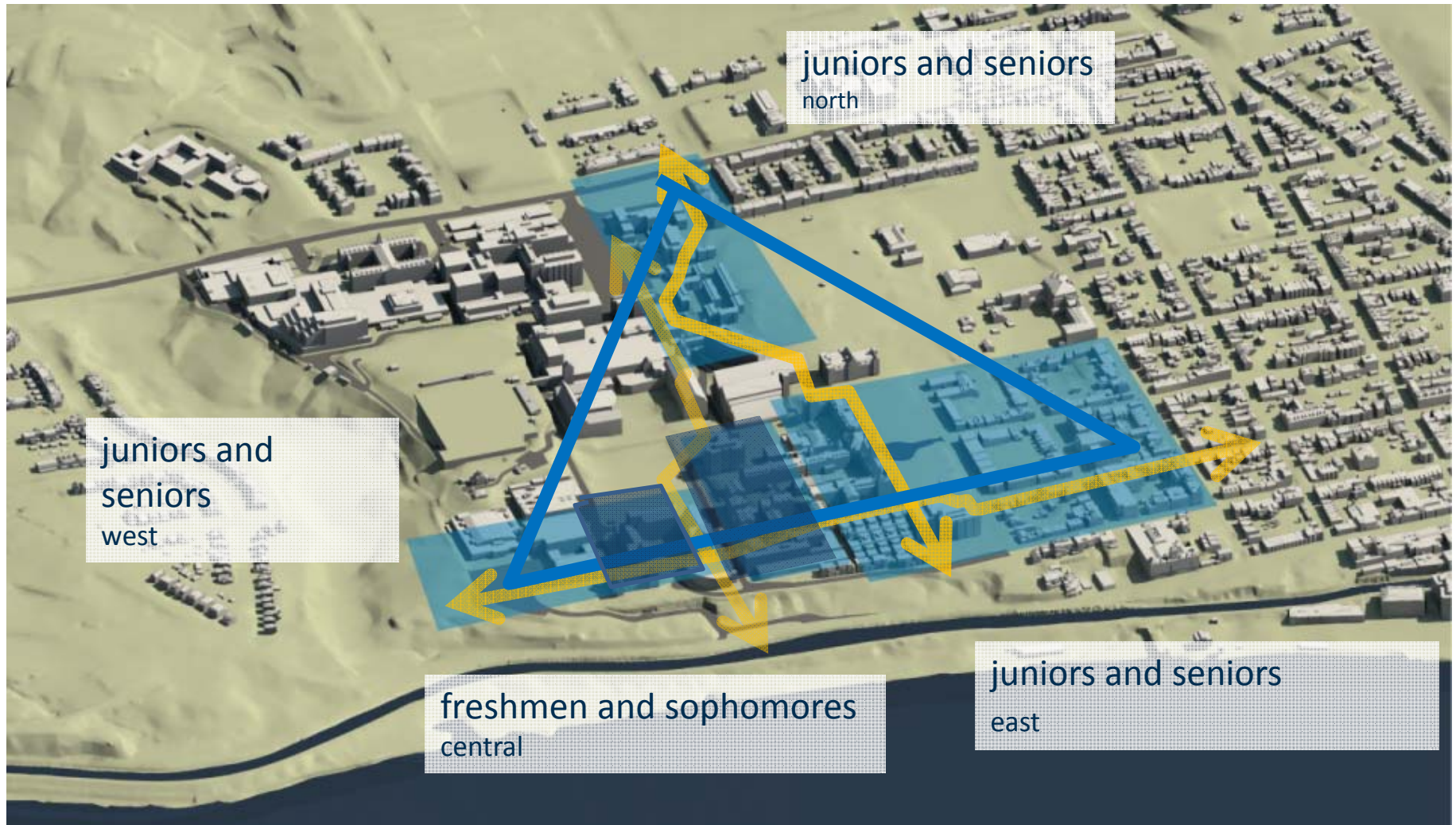
Undergraduate Housing Sites Zones of Potential Density



Undergraduate Housing Sites Residential Communities



Undergraduate Housing Sites Residential Communities



Undergraduate Housing Sites



Northeast Triangle

Kober-Cogan

Harbin Terrace

Leavey Center

Henle Addition

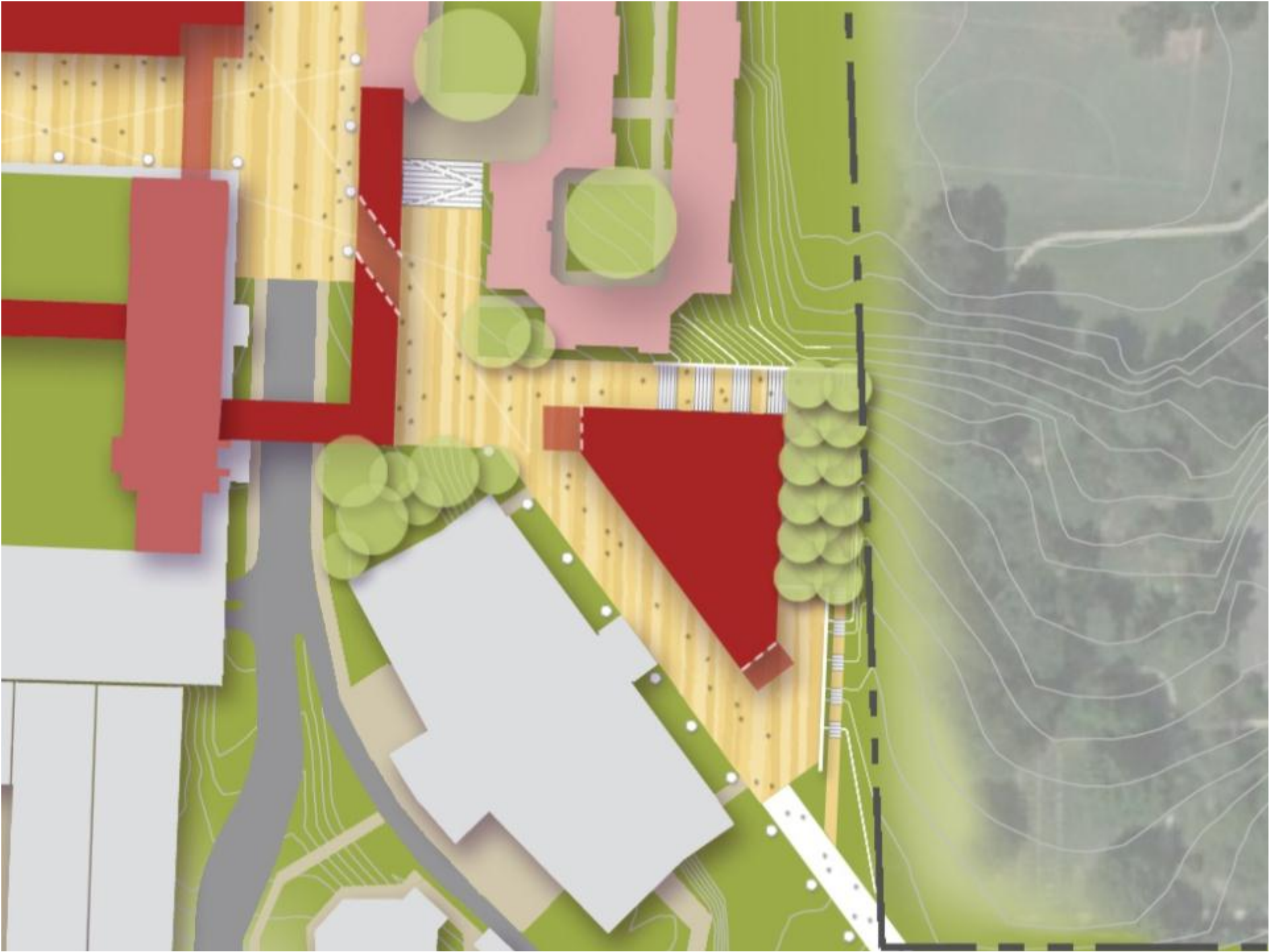
SW Quad Infill

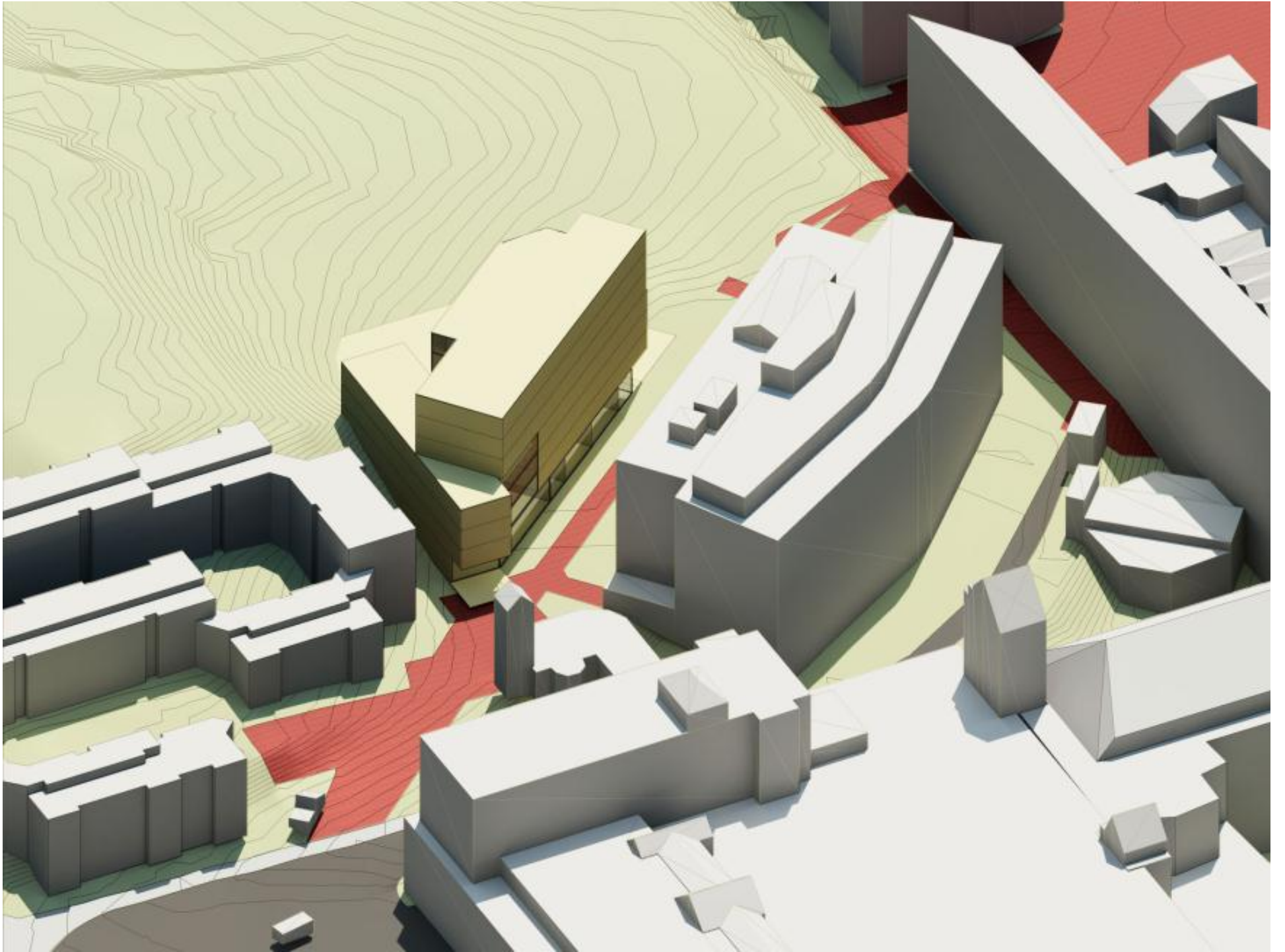
McDonough Lot

Undergraduate Housing Sites



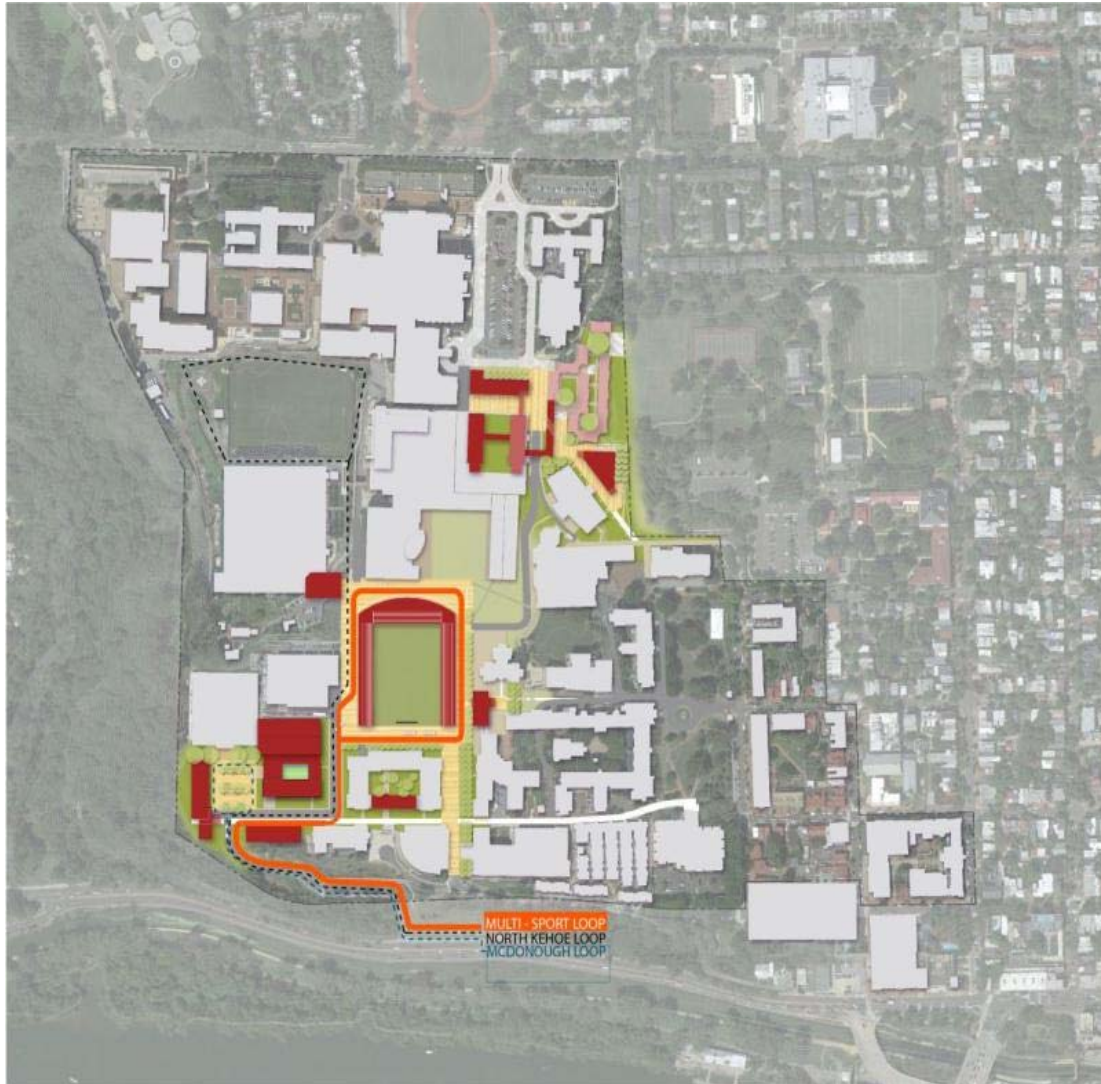
Northeast Triangle







Transportation



1. Multi-Sport Loop
2. McDonough Loop

Master Plan – Next Steps

Campus Framework Plan

A nine-month process that will –

Analyze Georgetown’s academic, physical, and financial resources and needs

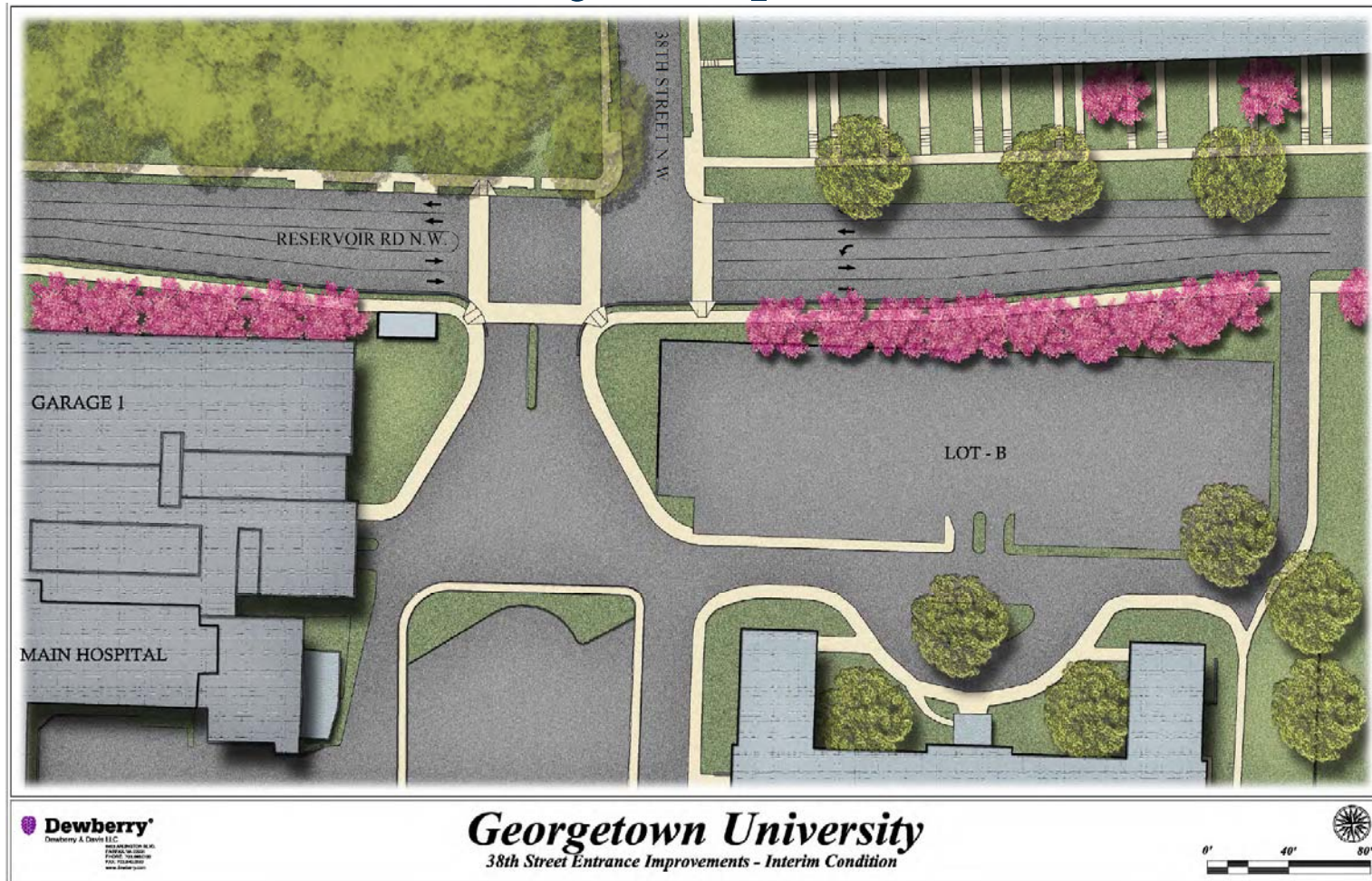
Explore solutions that advance the university’s mission

Prioritize projects that will transform the campus

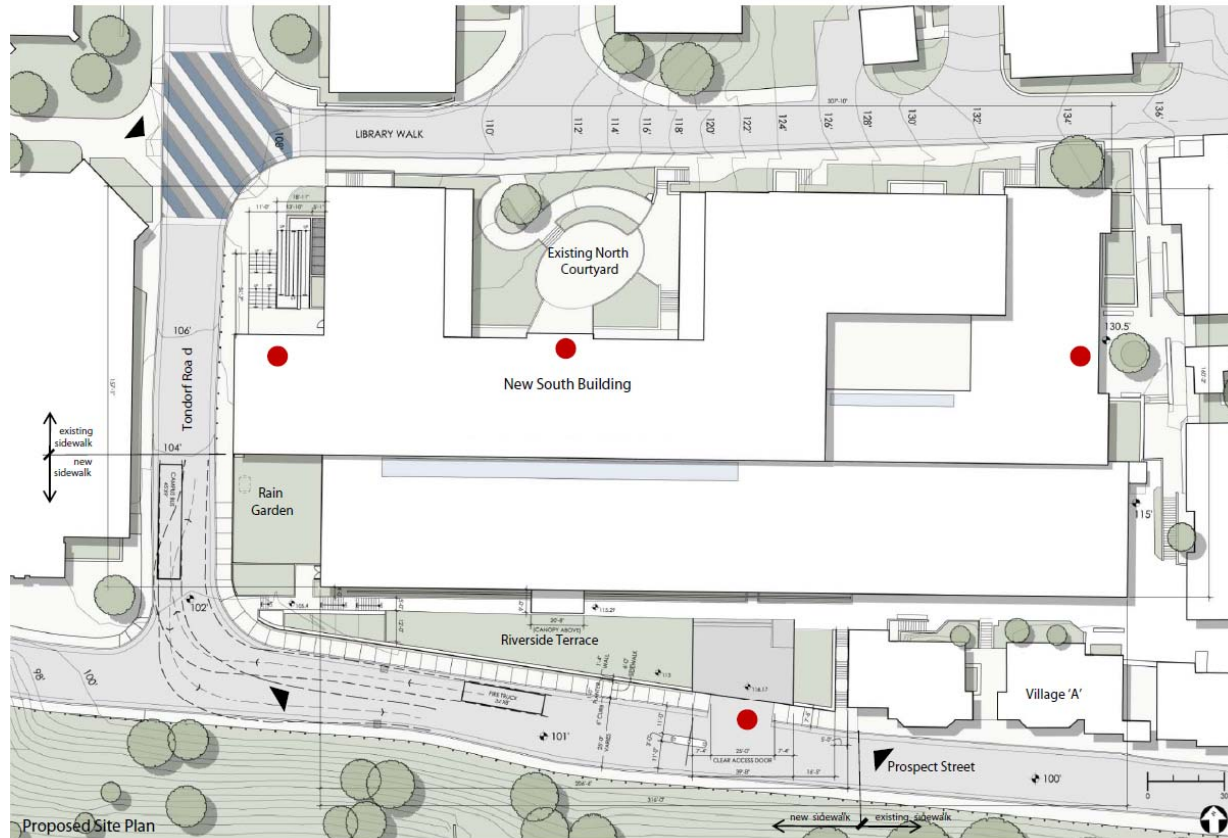
MyCampus Survey

(PLACEHOLDER SLIDE)

Planning and Facilities Management Project Update



Planning and Facilities Management Project Update



Georgetown University
New South Student Center
Site Plan

ikon.5 architects
March 18, 2013

Planning and Facilities Management Project Update



Riverside Terrace Landscape Plan

Georgetown University
New South Student Center

ikon.5 architects
March 18, 2013

GEORGETOWN
UNIVERSITY

Planning and Facilities Management Project Update



Georgetown University
New South Student Center

ikon.5 architects
March 18, 2013

GEORGETOWN
UNIVERSITY

Planning and Facilities Management Project Update



Georgetown University
New South Student Center

ikon.5 architects
March 18, 2013

GEORGETOWN
UNIVERSITY

Planning and Facilities Management Project Update



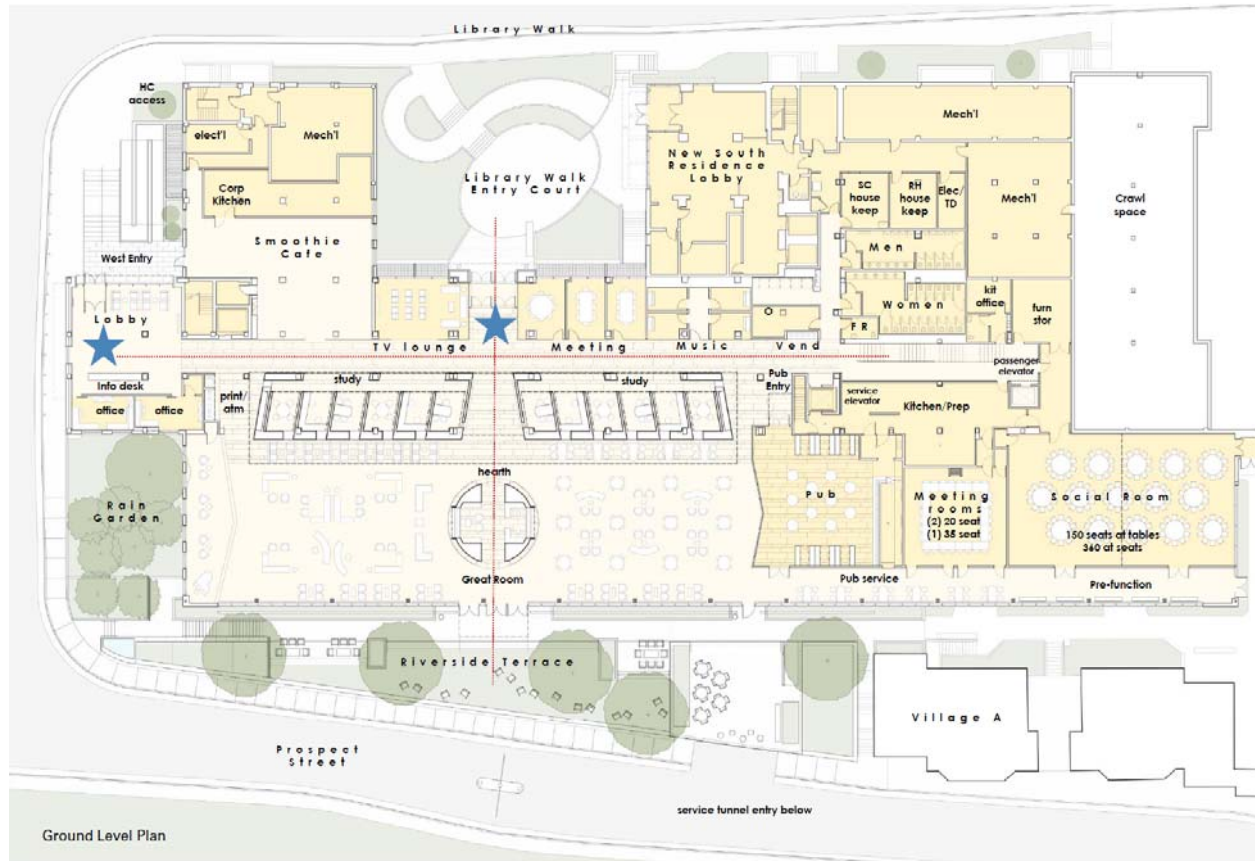
Proposed view of South facade along Prospect Street

Georgetown University
New South Student Center

ikon.5 architects
March 18, 2013

GEORGETOWN
UNIVERSITY

Planning and Facilities Management Project Update



Georgetown University
New South Student Center

ikon.5 architects
March 18, 2013

GEORGETOWN
UNIVERSITY

Planning and Facilities Management Project Update

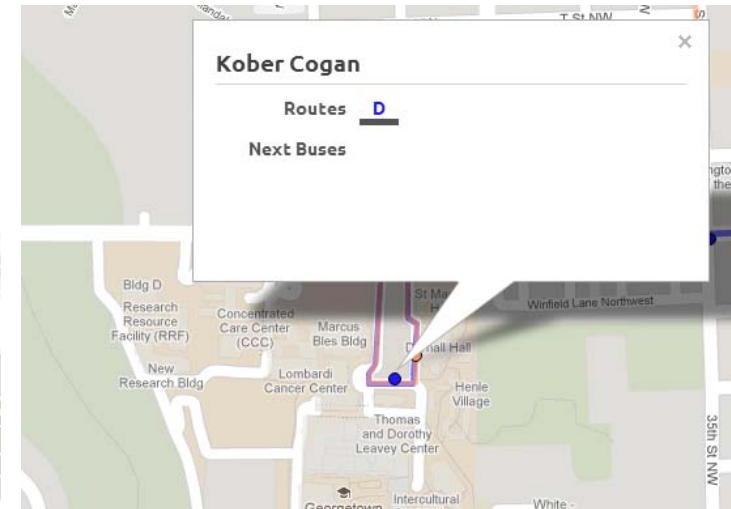
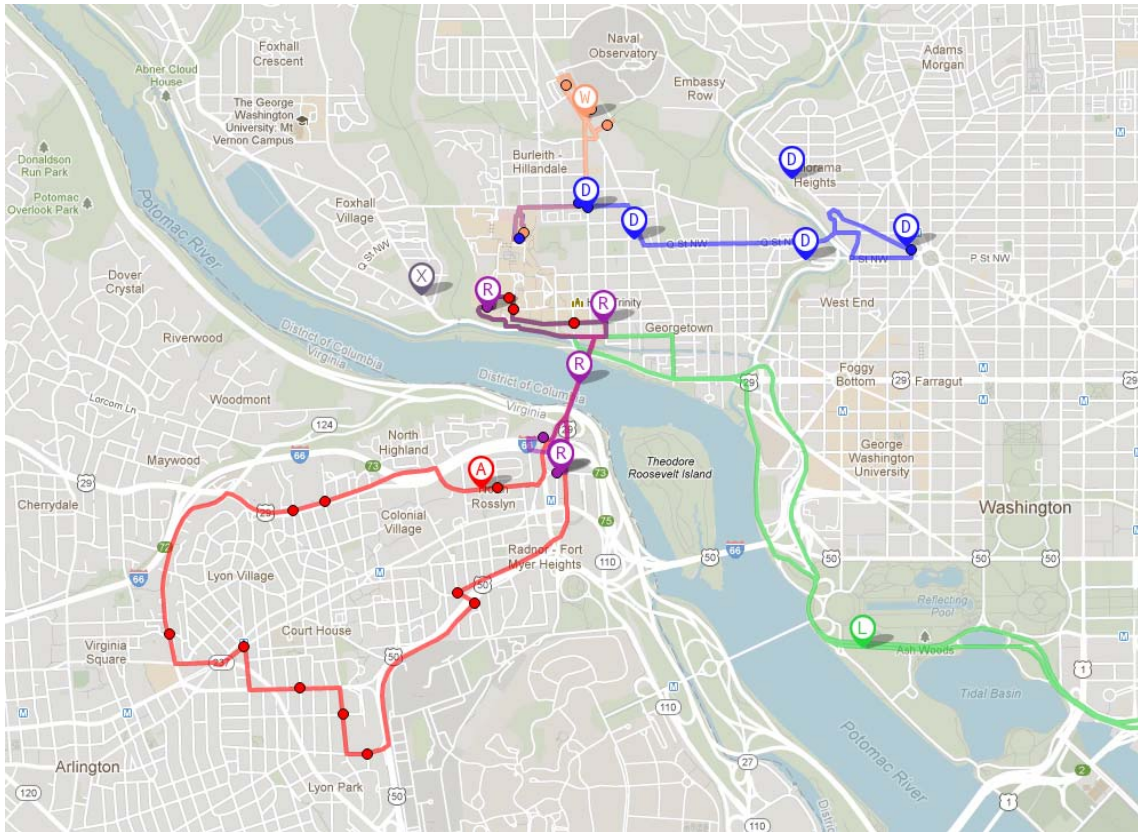


Georgetown University
New South Student Center

ikon.5 architects
March 18, 2013

GEORGETOWN
UNIVERSITY

Planning and Facilities Management GUTS Improvements



Q & A





GEORGETOWN UNIVERSITY