

BIGJ AD 2.1 Staðarauðkenni og heiti
flugvallar

BIGJ AD 2.1 Aerodrome location
indicator and name

BIGJ - GJÖGUR / Gjogur

BIGJ AD 2.2 Landfræðilegar og
stjórnunarupplýsingar
flugvalla

BIGJ AD 2.2 Aerodrome geographical
and administrative data

ENGLISH/ ICELANDIC		
1	ARP coordinates and site at Aerodrome	655943N
	Hnattstaða flugvalla	0211937W
2	Direction and distance from the CITY	250°GEO - 6.5 NM
	Stefna og fjarlægð frá borg	
3	Elevation / Reference temperature	90 FT
	Landhæð / viðmiðunarhitastig	
4	Geoid undulation at AD ELEV PSN	214 FT
	Bylgjulögun jarðsporvölu (frá WGS-84 viðmiðunarsporvölu) í hæðarviðmiðunarpunkti flugvallar	
5	MAG VAR / Annual change	17°W (2010) / 18 min
	Misvísun / árleg breyting	
6	AD Administration, address, telephone, telefax, AFS	Isavia ohf. Isafjardarflugvelli 400 Isafirdi, Iceland Telephone: +354 456 3640 Telefax: +354 456 4606 BIGJ AFIS: Tel: +354 451 4033 e-mail:
	Rekstraraðili flugvallar, heimilisfang, sími, símbréf, AFS	
7	Types of traffic permitted	IFR-VFR
	Leyfð flugumferð	
8	Remarks	NIL
	Athugasemdir	

BIGJ AD 2.3 Þjónustutímar

BIGJ AD 2.3 Operational hours

ENGLISH/ ICELANDIC		
1	AD Administration	NIL
	Rekstraraðili flugvallar	
2	Customs and immigration	NIL
	Tollur og útlendingaeftirlit	
3	Health and sanitation	NIL
	Heilsugæsla	
4	AIS Briefing Office	NIL
	Kynningarstofa upplýsingaþjónusta	
5	ATS Reporting Office (ARO)	NIL
	Tilkynningarstöð flugumferðarþjónustu	
6	MET Briefing Office	H24 - IMO telephone / Sími Veðurstofu Íslands: + 354 522 6000
	Kynningastofa veðurþjónustu	
7	ATS	HS - See AIP Supplement Möguleg þjónusta - Sjá viðbæti við Flugmálahandbók
	Flugumferðarþjónusta	

8	Fuelling	NIL
	Eldsneyti	
9	Handling	O/R
	Afgreiðsla	Skv. beiðni
10	Security	NIL
	Öryggisgæsla	
11	De-icing	NIL
	Afising	
12	Remarks	NIL
	Athugasemdir	

BIGJ AD 2.4 Afgreiðsla og tæki

BIGJ AD 2.4 Handling services and facilities

ENGLISH/ ICELANDIC		
1	Cargo handling facilities:	Limited - PN
	Fraktmeðhöndlun	Takmörkuð - Með fyrirfram beiðni
2	Fuel / oil types	NIL
	Eldsneytistegundir / olíur	
3	Fuelling facilities / capacity	NIL
	Eldsneytisbúnaður / magn	
4	De-icing facilities	NIL
	Afisingarbúnaður	
5	Hanger space available for visiting aircraft	NIL
	Flugskýlisplass fyrir aðkomuvélar	
6	Repair facilities for visiting aircraft	NIL
	Viðhaldsmöguleikar fyrir aðkomuvélar	
7	Remarks	NIL
	Athugasemdir	

BIGJ AD 2.5 Aðstaða farþega

BIGJ AD 2.5 Passenger facilities

ENGLISH/ ICELANDIC		
1	Hotels	NIL
	Hótel	
2	Airport Restaurant	NIL
	Veitingastaðir á flugvelli	
3	Transportation	NIL
	Fólksflutningar	
4	Medical facilities	NIL
	Hjúkrunaraðstaða	
5	Bank and Post Office	NIL
	Banki og pósthús	
6	Tourist Office	NIL
	Ferðaskrifstofa	
7	Remarks	Terminal/Flugstöð
	Athugasemdir	

BIGJ AD 2.6 Björgun og eldvarnir

BIGJ AD 2.6 Rescue and fire fighting services

ENGLISH/ ICELANDIC		
1	AD category for fire fighting	ARFF CAT II
	Flokkur björgunar- og slökkviþjónustu	
2	Rescue equipment	Yes / Já
	Björgunartæki	
3	Capability for removal of disabled aircraft	NIL
	Möguleiki á að fjarlægja bilaðar flugvélar	
4	Remarks	NIL
	Athugasemdir	

BIGJ AD 2.7 Árstíðarbundnar hreinsanir

BIGJ AD 2.7 Seasonal Availability - Clearing

ENGLISH/ ICELANDIC		
1	Types of Equipment	See snow plan AD 1.2.2 / Sjá kafla AD 1.2.2 um vetrarviðhald
	Tegund tækja	
2	Clearance priorities	See snow plan AD 1.2.2 / Sjá kafla AD 1.2.2 um vetrarviðhald
	Forgangsröð hreinsunar	
3	Remarks	All seasons, winter conditions from Oct. to Apr. / Allt árið, vetrartími frá okt. til apr.
	Athugasemdir	

BIGJ AD 2.8 Hlað, akbrautir og staðsetning gátstaða

BIGJ AD 2.8 Aprons, taxiways and check locations data

ENGLISH/ ICELANDIC		
1	Apron surface and strength	Gravel Möl
	Yfirborð stæðis og styrkur	
2	Taxiway width, surface and strength	15 m - gravel/möl
	Breidd akbrautar, yfirborð og styrkur	
3	ACL location and elevation	Apron 98 FT Hlað 98 FT
	Staðsetning og hæð fyrir hæðarmælisathugun	
4	VOR checkpoints	NIL
	VOR gátstaðir	
5	INS checkpoints	NIL
	INS gátstaðir	
6	Remarks	NIL
	Athugasemdir	

BIGJ AD 2.9 Leiðbeininga- og upplýsingaskilti og merkingar

BIGJ AD 2.9 Surface movement guidance and control system and markings

ENGLISH/ ICELANDIC		
1	TWY guidelines Akbrautarmörkingar	NIL
2	RWY & TWY markings and LGT Flugbrautar- og akbrautarmörkingar og ljós	NIL
3	Stop bars Stöðvunarljós	NIL
4	Remarks Athugasemdir	NIL

BIGJ AD 2.10 Flugvallarhindranir

BIGJ AD 2.10 Aerodrome Obstacles

OBST ID / Designation	OBST type	OBST position	ELEV / HGT	Markings / Type, colour	Remarks
a	b	c	d	e	f
To be notified / Verður tilkynnt					

BIGJ AD 2.11 Veittar veðurupplýsingar

BIGJ AD 2.11 Meteorological information provided

ENGLISH/ ICELANDIC		
1	Associated MET Office Aðalveðurstofa	Icelandic Met Office, see Gen 3.5 / Veðurstofa Íslands, sjá GEN 3.5
2	Hours of service Þjónustutími	H24 / Allan sólarhringinn
3	Office responsible for TAF preparation Skrifstofa ábyrg fyrir TAF	TAF not AVBL
	Periods of validity Gildistími	NIL
4	Type of landing forecast Tegund landingaspár	NIL
5	Briefing/consultation provided Veðurkynning/ráðfærsla veitt	Icelandic Met Office / Veðurstofa Íslands Telephone / sími: + 354 522 6000
6	Flight documentation Fluggögn	SIGMET, Flight condition over Iceland / Flugveðurskilyrði yfir Íslandi, Low Level Wind/SIGWX forecasts charts, NAT Wind/Temp/ SIGWX forecasts charts.
	Language(s) used Tungumál	English and Icelandic/ Enska og íslenska
7	Charts and other information available for briefing or consultation Kort og aðrar upplýsingar tiltækar fyrir veðurkynningu eða ráðfærslu	Ref./Tilv.: GEN 3.1, GEN 3.5 http://en.vedur.is/weather/aviation/ http://www.vedur.is/vedur/flugvedur/
8	Supplementary equipment available for providing information Önnur tæki til upplýsingaöflunar	NIL
9	ATS units provided with information Flugumferðarþjónusta sem fær upplýsingarnar	NIL

ICELANDIC

ENGLISH

10	Additional information (limitation of service, etc.)	NIL
	Viðbótarupplýsingar (takmörkun þjónustu)	

BIGJ AD 2.12 Sérkenni flugbrauta

BIGJ AD 2.12 Runway physical characteristics

Designations RWY NR	TRUE BRG	Dimensions of RWY (M)	Strength (PCN) & surface of RWY and SWY	THR coordinates RWY end coordinates THR geoid undulation	THR elevation & highest elevation of TDZ of precision APP RWY
1	2	3	4	5	6
05	028	960x28	— Möl / Gravel	655929N 211955W — GUND 214 FT	THR 83 FT —
23	208	960x28	— Möl / Gravel	655957N 211919W — GUND 214 FT	THR 54 FT —

Designations RWY NR	Slope of RWY-SWY	SWY dimensions (M)	CWY dimensions (M)	Strip dimensions (M)	OFZ
1	7	8	9	10	11
05	-0.9%	NIL	200	980 x 80	NIL
23	+0.9%	NIL	200	980 x 80	NIL

Designations RWY NR	Remarks
1	12
05	NIL
23	

BIGJ AD 2.13 Skilgreindar brautarlengdir

BIGJ AD 2.13 Declared distances

RWY Designator	TORA (M)	TODA (M)	ASDA (M)	LDA (M)	Remarks
1	2	3	4	5	6
05	960	1160	960	960	
23	960	1160	960	960	

BIGJ AD 2.14 Aðflugs- og flugbrautarljós

BIGJ AD 2.14 Approach and runway lighting

RWY Designator	APCH LGT type LEN INTST	THR LGT colour WBAR	VASIS (MEHT) PAPI	TDZ LGT LEN	RWY Centre Line LGT Length, spacing, colour, INTST	RWY edge LGT LEN, spacing, colour, INTST	RWY End LGT colour WBAR	SWY LGT LEN (M) colour	Remarks
1	2	3	4	5	6	7	8	9	10
05	NIL	Green WBAR ^{1, 2}	PAPI 3.0°	NIL	NIL	960, 60, White, LIL	Red ³ WBAR	NIL	
23	NIL	Green WBAR ^{1, 2}	PAPI 3.0°	NIL	NIL	960, 60, White, LIL	Red ³ WBAR	NIL	

¹ Reduced WBAR, 4 ea. LGT on each side of RWY edge / Takmarkaður WBAR, 4 ljós utan hliðarbrúna
² RWY THR ID LGT / Þröskuldarkenniljós
³ RWY end LGT, 4 ea. LGT on each side of RWY edge / Brautarendaljós, 4 ljós utan hliðarbrúna

BIGJ AD 2.15 Önnur lýsing og vararafmagn

BIGJ AD 2.15 Other lighting, secondary power supply

ENGLISH/ ICELANDIC	
1	ABN/IBN location, characteristics and hours of operation Flugvallarviti - staðsetning
	ABN FLG G and W on top of pole / í staur - PSN 655943N and 0211952W
2	WDI location and LGT Anemometer location and LGT Vindmælir
	NIL
3	TWY edge Akbrautarkantljós
	TWY edge lights Akbrautarljós
4	Secondary power supply / switch-over time Vararafmagn / skiptitími
	Secondary power, switchover time 10 seconds Vararafmagn, skiptitími 10 sekúndur
5	Remarks: Athugasemdir
	NIL

BIGJ AD 2.16 Lendingarsvæði fyrir þylur

BIGJ AD 2.16 Helicopter landing area

ENGLISH/ ICELANDIC	
1	Coordinates TLOF or THR of FATO Staðsetning landingarsvæðis
	Runway in front of Terminal Flugbraut framán við flugstöð
2	TLOF and/or FATO elevation M/FT Hæð á landingarstað M/FT
	NIL
3	TLOF and FATO area dimensions, surface, strength, marking Stærð, yfirborð, styrkleiki, merking
	NIL
4	True and MAG BRG of FATO Réttstefna og segulstefna á FATO
	NIL
5	Declared distance available Skilgreind lengd
	NIL
6	Remarks Athugasemdir
	NIL

**BIGJ AD 2.17 Loftrými
flugumferðarþjónustu**

BIGJ AD 2.17 ATS airspace

ENGLISH/ ICELANDIC		
1	Designation and lateral limits	Uncontrolled airspace
	Heiti og útlínur	Óstjórnað loftrými
2	Vertical limits	NIL
	Hæðarmörk	
3	Airspace classification	Class G / Flokkur G
	Flokkun loftrýmis	
4	ATS unit call sign and language(s)	Gjögur Flugradió – Íslenska / Icelandic
	Kallmerki flugumferðarþjónustu og tungumál	
5	Transition altitude	7000 FT MSL
	Skiptihæð	
6	Remarks	NIL
	Athugasemdir	

BIGJ AD 2.18 ATS fjarskiptabúnaður

**BIGJ AD 2.18 ATS communication
facilities**

Service designation	Call sign	Frequency		Hours of Operation	Remarks
		Transmit	Receives		
1	2	3		4	5
AFIS	Gjögur	118.6		See AIP Supplement	NIL

**BIGJ AD 2.19 Flugleiðsögu- og
aðflugsbúnaður**

**BIGJ AD 2.19 Radio navigation and
landing aids**

Type of aid, CAT of ILS/MLS (For VOR/ILS/MLS, give VAR)	ID	Frequency	Hours of operation	Site of transmitting antenna coordinates	Elevation of DME transmitting antenna	Remarks
1	2	3	4	5	6	7
NDB / MKR	GJ	340 KHZ	H24	655941N 0211948W	NIL	NIL

**BIGJ AD 2.20 Svæðisbundnar
umferðarreglur**

NIL

**BIGJ AD 2.21 Flugaðferðir til
hávaðamildunar**

NIL

BIGJ AD 2.22 Flugaðferðir

NIL

BIGJ AD 2.20 Local traffic regulations

NIL

**BIGJ AD 2.21 Noise abatement
procedures**

NIL

BIGJ AD 2.22 Flight procedures

NIL

BIGJ AD 2.23 Viðbótarupplýsingar

NIL

BIGJ AD 2.24 Kort sem tilheyra flugvelli

BIGJ AD 2.23 Additional Information

NIL

**BIGJ AD 2.24 Chart Related to
Aerodrome**

Kort / Chart
Aerodrome Ground Movement Chart
Instrument Approach Chart - ICAO RNAV (GNSS) A
Instrument Approach Chart - ICAO NDB A

AIP Iceland

FLUGMÁLAHANDBÓK

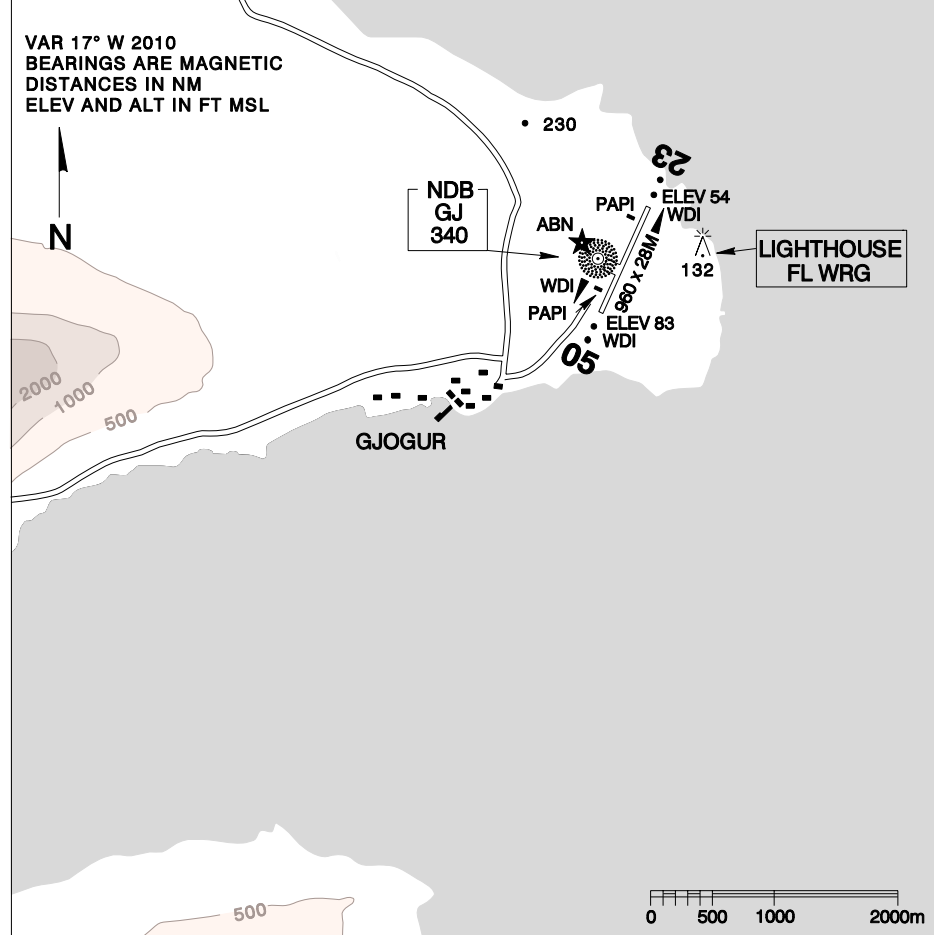
AERODROME GROUND
MOVEMENT CHART

SCALE 1: 60 000

AD ELEV 90
GJOGUR AFIS 118.6
AD REF POINT 655943 N 0211937 W

BIGJ
11 MAR 2011

GJOGUR



CHANGES: NONE

APPROACH LIGHTING
PAPI 3° RWY 05/23

TRUE BEARING OF RUNWAY
028°/208°

RUNWAY LIGHTING
RWY 05/23: LIM W EDGE, G THR
LEAD-IN LIGHTS RWY 05/23

TYPE OF RUNWAY SURFACE
GRAVEL

OTHER LIGHTING
FW ABN
MARINE BCN
OBS

THR. COORDINATES
RWY 05: 655929N 211955W
RWY 23: 655957N 211919W

T/O MINIMA

ICELANDIC CAA/FLUGMÁLASTJÓRN ÍSLANDS

Pub. by/Útg: ISAVIA

THIS PAGE INTENTIONALLY LEFT BLANK

AIP Iceland
FLUGMÁLAHANDBÓK

AD ELEV 90

BIGJ
9 FEB 2012

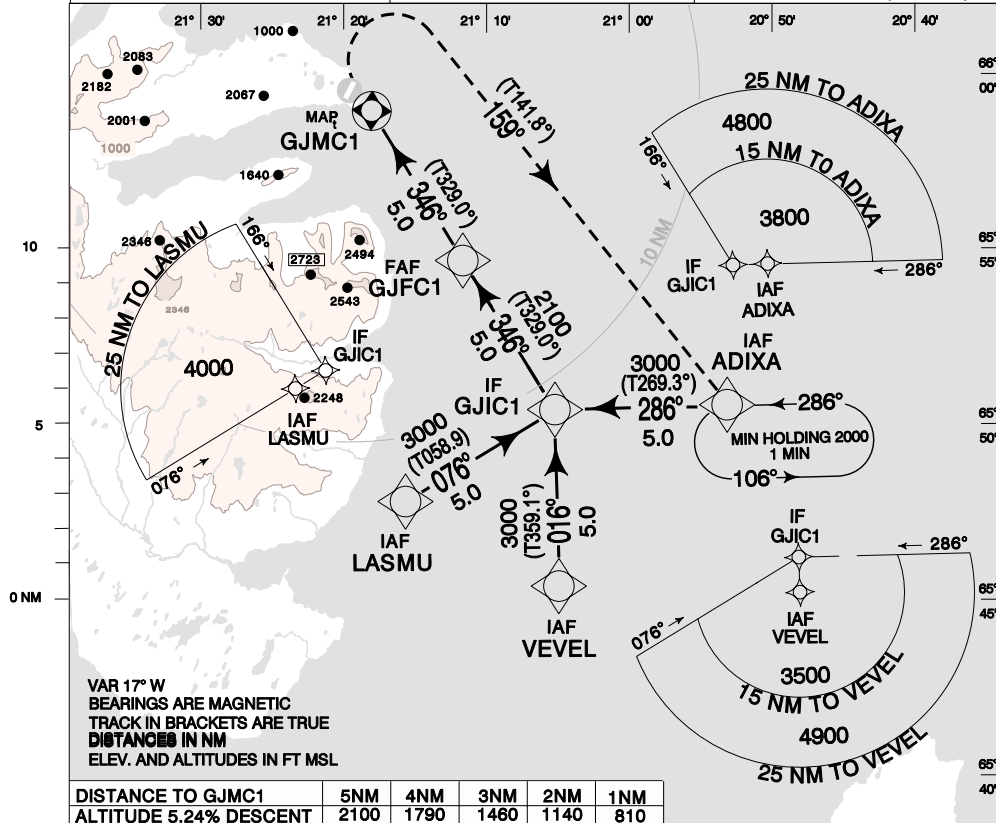
INSTRUMENT APPROACH
CHART - ICAO

GJOGUR AFIS 118.6
ACC 119.7

GJOGUR

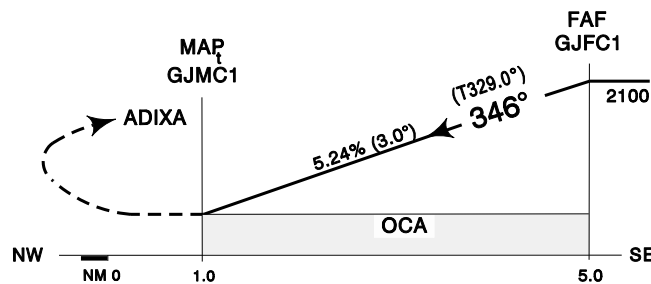
SCALE 1:400.000

RNAV (GNSS) A



TRANS LEVEL BY ATC
TRANS ALT 7000

MISSED APPROACH: RIGHT CLIMBING TURN ON
TRACK 159° TO ADIXA AND HOLD AT 3000'.



Timing not authorized for defining MAP

GS	kt	80	100	120	140	160
GJFC1 - GJMC1 (5.0NM)	MIN:SEC	3:45	3:00	2:30	2:09	1:52
Rate of descent (5.2%)	ft/MIN	430	540	650	760	860
OCA (H)	A	B*	B			
CIRCLING	510 (420)	580 (490)	1820 (1730)			

NOTE: CIRCLE ONLY EAST OF RWY, * AUTH. REQUIRED 25° BANK WHEN CIRCLING

FLUGMÁLASTJÓRN ÍSLANDS/ICELANDIC CAA

Pub. by: ISAVIA

THIS PAGE INTENTIONALLY LEFT BLANK

AIP Iceland

FLUGMÁLAHANDBÓK

AD ELEV 90

BIGJ
9 FEB 2012

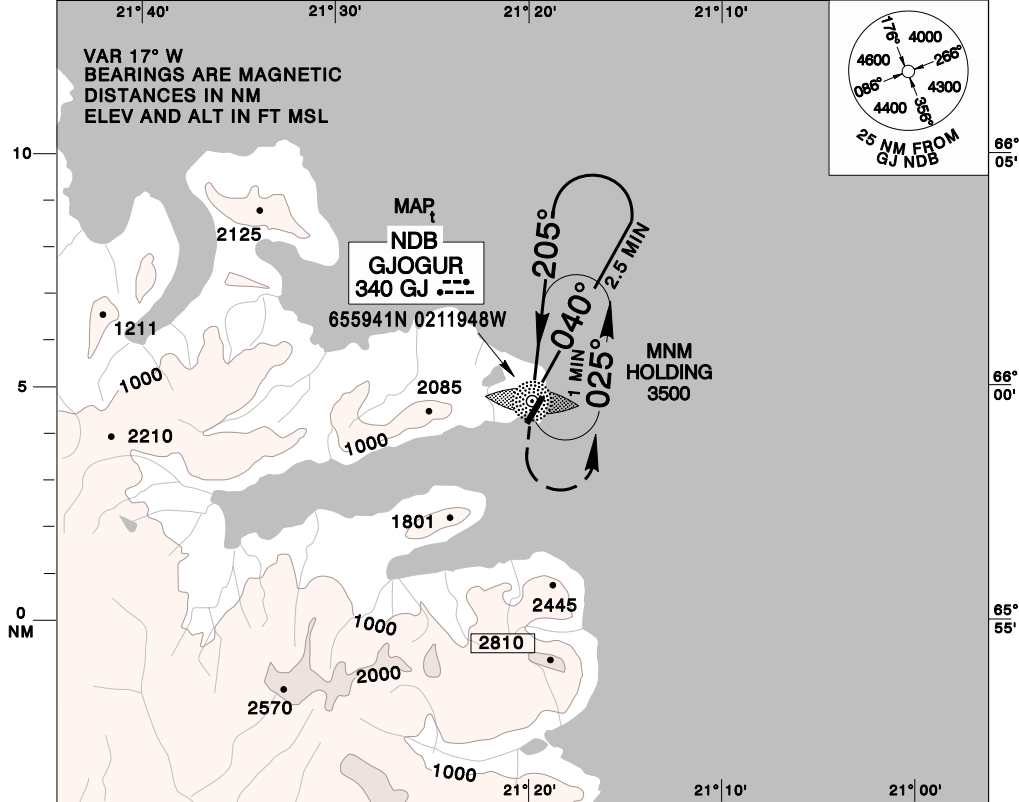
INSTRUMENT APPROACH
CHART - ICAO

GJOGUR AFIS 118.6
ACC 119.7

GJOGUR

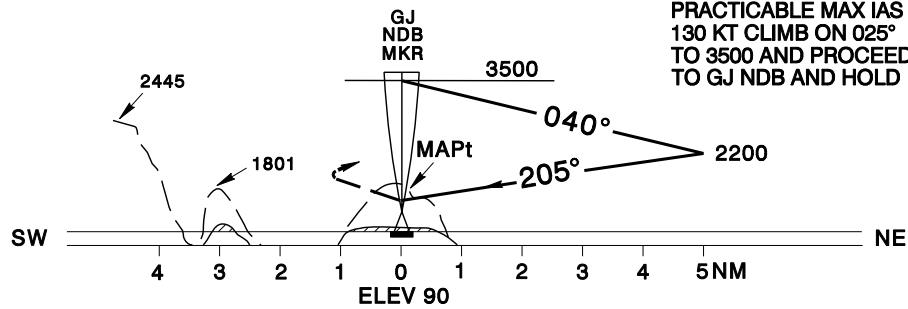
SCALE 1: 300 000

NDB A



TRANS LEVEL BY ATC
TRANS ALT 7000

MISSED APPROACH:
LEFT TURN AS SOON AS
OPERATIONALLY
PRACTICABLE MAX IAS
130 KT CLIMB ON 025°
TO 3500 AND PROCEED
TO GJ NDB AND HOLD



CHANGES: NONE

OCA (H)	A	B*	B
CIRCLING	510 (420)	580 (490)	1820 (1730)

NOTE: CIRCLE ONLY EAST OF RWY, * AUTH. REQUIRED 25° BANK WHEN CIRCLING

ICELANDIC CAA/FLUGMÁLASTJÓRN ÍSLANDS

Pub. by/Útg.: ISAVIA

THIS PAGE INTENTIONALLY LEFT BLANK

BIGJ AD 2.25 Leiðsöguhnit

2.25.1 Kóðunartöflur fyrir blindaðflug

BIGJ AD 2.25 Waypoint List

2.25.1 Instrument Approach Procedure Coding Tables

Gjogur RNAV(GNSS) Circling VIA LASMU

Sequence Number	Path Terminator	Waypoint Name	Fly-over	Turn Direction	Course / Track °M(°T)	Distance	Level Constraint	Speed Constraint	Co-ordinates	Vertical Path Angle/ TCH
001	IF	LASMU	N				+4000		654758.98N 0211555.21W	
002	TF	GJICI	N		076°/ (058.95)	5.00	3000		655032.84N 0210530.10W	
003	TF	GJFCI	N	L	346°/ (329.10)	5.00	2100		655449.25N 0211145.81W	
004	TF	GJMCI	Y		346°/ (329.03)	5.00			655905.34N 0211803.26W	
005	CF	ADIXA	N	R	159°/ (141.78)				655037.03N 0205320.47W	
006	HM	ADIXA	Y	L	286°/ (269.29)		3000		655037.03N 0205320.47W	

Gjogur RNAV(GNSS) Circling VIA VEVEL

Sequence Number	Path Terminator	Waypoint Name	Fly-over	Turn Direction	Course / Track °M(°T)	Distance	Level Constraint	Speed Constraint	Co-ordinates	Vertical Path Angle/ TCH
001	IF	VEVEL	N				+3500		654533.91N 0210518.73W	
002	TF	GJICI	N	L	016°/ (359.11)	5.00	3000		655032.84N 0210530.10W	
003	TF	GJFCI	N		346°/ (329.10)	5.00	2100		655449.25N 0211145.81W	
004	TF	GJMCI	Y		346°/ (329.03)	5.00			655905.34N 0211803.26W	
005	CF	ADIXA	N	R	159°/ (141.78)				655037.03N 0205320.47W	
006	HM	ADIXA	Y	L	286°/ (269.29)		3000		655037.03N 0205320.47W	

Gjogur RNAV(GNSS) Circling VIA ADIXA

Sequence Number	Path Terminator	Waypoint Name	Fly-over	Turn Direction	Course / Track °M(°T)	Distance	Level Constraint	Speed Constraint	Co-ordinates	Vertical Path Angle/ TCH
001	IF	ADIXA	N				+3800		655037.03N 0205320.47W	
002	TF	GJICI	N		286°/ (269.29)	5.00	3000		655032.84N 0210530.10W	
003	TF	GJFCI	N	R	346°/ (329.10)	5.00	2100		655449.25N 0211145.81W	
004	TF	GJMCI	Y		346°/ (329.03)	5.00			655905.34N 0211803.26W	
005	CF	ADIXA	N	R	159°/ (141.78)				655037.03N 0205320.47W	
006	HM	ADIXA	Y	L	286°/ (269.29)			3000	655037.03N 0205320.47W	