

AD 4 FLUGVELLIR FYRIR INNANLANDSFLUG

AD 4.1 Aðrir flugvellir og lendingarstaðir

Ath.: Sjá einnig athugasemd í AD 1.4 - I

4.1.1 Flugvallaskrá

Eftirfarandi athugasemd gildir eingöngu fyrir flugvelli og landingarstaði í umsjón Isavia:

Reglubundið eftirlit og viðhald brauta s.s. völtun fer fram í upphafi sumars og er sent út NOTAM eftir að völlum hefur verið valtaður. Eftir það getur Isavia ekki tryggt að ástand flugbrauta sé viðunandi.

AD 4 DOMESTIC AERODROMES

AD 4.1 Other Aerodromes and landing strips

Note: See note in AD 1.4 - I

4.1.1 Aerodrome directory

Following remark is only valid for Isavia's aerodromes and landing strips:

Regular supervision and maintenance of runways is performed in the beginning of the summer and NOTAM is issued after rolling the runways. After that Isavia can not ensure that the condition of the runways is acceptable.

AERODROME/ LANDING STRIP Location Indicator Coordinates (ARP) Location Elevation (ft)	RWY	Dimensions (m)	Surface	Light	ATS Fuel	COM FREQ (mHZ)	Aerodrome Operator Tel. (Fax) Regulations and restrictions Remarks
BAKKI / Bakki * BIBA 633322N 0200815W 30 FT	12/30 03/21	1000x30 800x30	Tjörubundin grús / Asphalt Stabilized Gravel Gras / Grass	 Já / Yes	 100 LL	 118.1	Isavia ohf. 481 1969 Ingibergur Einarsson 894 8474 Ingibergur Einarsson Flugstöð / Terminal ARFF CAT 0
BLÖNDUÓS / Blönduós * BIBL 653842N 0201715W 131 FT	04/22	970x27	Mól / Gravel	Já / Yes	Nei / No 100 LL	118.6	Isavia ohf. 452 4289 452 4090 Jónas Þór Sigurgeirsson PAPI 3° Farþegaskýli / Passenger shelter Hótel í bænum / Hotel in village
BORGARFJÖRDUR EYSTRÍ / Borgarfjörður eystri BIBF 653059N 0134818W 80 FT	01/19	932x25	Mól / Gravel	Nei / No	Nei / No	118.1	Isavia ohf. +354 424 4020 Flugturn Egilsstöðum
BREIÐDALSVÍK / Breiddalsvík * BIBV 644724N 0140122W 8 FT	13/31	813x30	Mól / Gravel	Nei / No	Nei / No	118.1	Isavia ohf. +354 424 4020 Flugturn Egilsstöðum
BÚÐARDALUR / Budardalur BIBR 650431N 0214801W 131 FT	04/22	795x24	Mól / Gravel	Nei / No	Nei / No	118.1	Isavia ohf. 434 1210 Böðvar Magnússon 854 4075 Böðvar Magnússon 21 m mastur 65 m suður af brautarenda / 21 m mast 65 m south of RWY

* Aðflugskort

* Instrument Approach Chart

AERODROME/ LANDING STRIP Location Indicator Coordinates (ARP) Location Elevation (ft)	RWY	Dimensions (m)	Surface	Light	ATS Fuel	COM FREQ (mHZ)	Aerodrome Operator Tel. (Fax) Regulations and restrictions Remarks
DJÚPIVOGUR / Djupivogur BIDV 643839N 0141658W 9 FT	18/36	745x24	Möl / Gravel	Nei / No	Nei / No	118.1	Isavia ohf. 478 8288 Skrifstofa sveitarstjóra / Local authority 424 4020 Flugturn Egilsstöðum / Egilsstaðir Tower Neyðarlýsing / Emergency lights Hæðótt vestan brautar / Hills west of RWY Mastur 1 NM fyrir norðan völinn, 230 fet yfir sjó / Mast 1 NM north of airport 230 FT MSL Yfirborð oft laust eftir akstur bifreiða / Surface sometimes loose because of car traffic Hótel í þorpi / Hotel in village
EINIHOLTSMEÐLAR / Einiholtsmelar BIEH 6415N 02018W	09 /27	732x35	Möl / Gravel	Nei / No	Nei / No	118.1	Einkavöllur / Private 898 7972 Kristján Einir Traustason Girðing sunnan brautar. Flugbraut varasöm í leysingum. Almenn opnum frá 1. júní til 1. okt. Hafið samband við umsjónarmann á öðrum tímum.
FAGURHÓLSMÝRI / Fagurhol Smyri BIFM 635229N 0163828W 56 FT	10/28	1194x28	Möl / Gravel	Nei / No	Nei / No	118.1	Isavia ohf. 478 1634 Sigurgeir Jónsson Brautin er gljúp á köflum / RWY partly soft
FLÚÐIR / Fludir BIFL 640834N 0201934W 270 FT	04/22	670x18	Gras / Grass	Nei / No	100 LL	118.1	Isavia ohf. 486 6589 486 6634 Guðjón Emilsson Farþegaskýli / Passenger shelter Hótel í þorpi / Hotel in village
GRÍMSSTAÐIR / Grimsstaðir BIGS 653757N 0160854W 1279 FT	02/20	635x35	Möl / Gravel	Nei / No	Nei / No	118.1	Isavia ohf. 864 7072 Guðmundur J. Jónasson Neyðarskýli / Emergency shelter
HELLA / Hella BIHL 635009N 0202239W 135 FT	05/23 11/29	1028x56 555x52	Gras / Grass Gras / Grass	Já / Yes ¹ Nei / No	100 LL	118.1	Isavia ohf. 894 0671 Þröstur Jónsson Netfang / Email: ljosa@simnet.is 899 5801 Bragi Pálmason Farþegaskýli / Passenger shelter
¹ Reduced WBAR, 4 ea. LGT on each side of RWY edge / Takmarkaður WBAR, 4 ljós utan hliðarbrúna THR ID LGT / Þröskuldarkenniljós RWY edge LGT, 9 m aside RWY / Hliðarljós 9 m utan brautar RWY end LGT, 4 ea. lights on each side of RWY edge / Brautarendaljós, 4 ljós utan hliðarbrúna Til að kveikja á brautarljósum lyklið 122.8 Mhz / For RWY LGT key on 122.8 Mhz MIN BRIGHT 3 times MED " 5 times MAX " 7 times Ljós slokkna eftir 18 mín. / Lights turn off after 18 min							
HERÐUBREIÐARLINDIR / Herðubreidarlindir BIHE 651119N 0161141W 1500 FT	01/19	800x19	Möl / Gravel	Nei / No	Nei / No	118.1	Isavia ohf. 864 7072 Guðmundur J. Jónasson Neyðarskýli / Emergency shelter

* Aðflugskort

* Instrument Approach Chart

AERODROME/ LANDING STRIP Location Indicator Coordinates (ARP) Location Elevation (ft)	RWY	Dimensions (m)	Surface	Light	ATS Fuel	COM FREQ (mHZ)	Aerodrome Operator Tel. (Fax) Regulations and restrictions Remarks
HÚSAFELL / Husafell BIHZ 644159N 0205301W 380 FT	11/29	740x18	Möl / Gravel	Nei / No	Nei / No	118.1	Isavia ohf. 435 1374 Bergþór Kristleifsson
HÚSAVÍK / Husavík * BIHU 655709N 0172533W 48 FT	03/21	1605x30	Tjörubundin grús / Asphalt Stabilized Gravel	Já / Yes ¹		118.1	Isavia ohf. 464 1253 (tel/fax) Flugstöð / Terminal Hótel og sjúkrahús í bænum / Hotel and hospital in town
¹ Reduced WBAR, 4 ea. LGT on each side of RWY edge / Takmarkaður WBAR, 4 ljós utan hliðarbrúna THR ID LGT / Þröskuldarkenniljós RWY edge LGT, 9 m aside RWY / Hliðarljós 9 m utan brautar RWY end LGT, 4 ea. lights on each side of RWY edge / Brautarendaljós, 4 ljós utan hliðarbrúna							
HVERAVELLIR / Hveravellir BIHI 645310N 0192933W 2000 FT	18/36	820x38	Möl / Gravel	Nei / No	Nei / No	118.1	Isavia ohf. 899 5801 Bragi Pálmason
KALDÁRMELAR / Kaldarmelar BIKA 644644N 0221525W 160 FT	04/22	653x26	Gras / Grass	Nei / No	Nei / No	118.1	Isavia ohf. 895 1367 Ólafur Pálsson 855 1367 Ólafur Pálsson Símalína vestan við flugbraut / Tel. line W of RWY
KERLINGARFJÖLL / Kerlingarfjöll BIKE 644218N 0192438W 2100 FT	11/29	704x36	Möl / Gravel	Nei / No	Nei / No	118.1	Isavia ohf. Loftnestvír strengdur frá skála yfir gilið / Antenna wire stretched from the lodge across the creek 899 5801 Bragi Pálmason
KIRKJUBÆJARKLAUSTUR / Kirkjubæjarklaustur BIKL 634727N 0180005W	10/28	799x26	Möl / Gravel	Nei / No	Nei / No	118.1	Isavia ohf. 487 4764 899 5801 Bragi Pálmason
KÓPASKER / Kopasker BIKP 661839N 0162800W 20 FT	02/20 12/30	875x24 800x24	Möl / Gravel Möl / Gravel	Nei / No Nei / No	Nei / No	118.1	Isavia ohf. 861 1385 Óskar Óskarsson
MELGERÐISMELAR / Melgerðismelar BIMM 6529N 01810W 87 FT	04/22	671x22	Gras / Grass	Nei / No	Nei / No	119.9	Isavia ohf. 463 1313 Svifflug / Glider flying Svifflug umferðarhringur austur af braut / Gliders traffic pattern east of runway Flugmódel umferðarhringur vestur af braut / Aircraft models traffic pattern west of runway Vallarsvið, sjá ENR 2.1 - 8 / Traffic Information Zone, see ENR 2.1 - 8
MÚLAKOT / Mulakot BIMK 634251N 0195245W 272 FT	08/26	799x39	Gras / Grass	Nei / No	Nei / No	118.1	Einkavöllur / Private 892 0008

* Aðflugskort

* Instrument Approach Chart

AERODROME/ LANDING STRIP Location Indicator Coordinates (ARP) Location Elevation (ft)	RWY	Dimensions (m)	Surface	Light	ATS Fuel	COM FREQ (mHZ)	Aerodrome Operator Tel. (Fax) Regulations and restrictions Remarks
NORÐFJÖRÐUR / Nordfjordur * BINF 650755N 0134447W 5 FT	08/26	1112x30	Möl / Gravel	Nei / No	Nei / No	118.1	Isavia ohf. 477 1214 Flugstöð / Terminal Neyðarljós skv. beiðni / Emergency Lights O/R Hótel í bænum / Hotel in Town
NÝDALUR / Nyidalur BIND 644314N 0180400W 2625 FT	04/22	890x45	Möl / Gravel	Nei / No	Nei / No	118.1	Isavia ohf. 899 5801 Bragi Pálmason
RAUFARHÖFN / Raufarhofn BIRG 662423N 0155506W 63 FT	07/25 15/33	1077x33 577x28	Möl / Gravel Möl / Gravel	Já / Yes ¹ Nei / No	Nei / No	118.1	Isavia ohf. 465 1269 861 1385 Óskar Óskarsson Farþegaskýli / Passenger shelter
¹ Reduced WBAR, 4 ea. LGT on each side of RWY edge / Takmarkaður WBAR, 4 ljós utan hliðarbrúna THR ID LGT / Þröskuldarkenniljós RWY edge LGT / Hliðarljós RWY end LGT, 4 ea. lights on each side of RWY edge / Brautarendaljós, 4 ljós utan hliðarbrúna							
REYKHÓLAR / Reykholar BIRE 652659N 0221348W 60 FT	09/27	796x27	Möl / Gravel	Nei / No	Nei / No	118.1	Isavia ohf. 456 3640 Rafmagnslína 300 m frá austurenda / Electr. line 300 m from E-end. Öryggissvæði takmörkuð til beggja hliða, sérstaklega við vesturhluta brautar / Safety area limited both side of RWY, especially at western part of runway.
REYKJAHLIÐ / Reykjahlid * BIRL 653921N 0165505W 1031 FT	02/20	926x20	Tjörubundin grús / Asphalt Stabilized Gravel	Nei / No	100 LL	118.1	Isavia ohf. 464 4400 Farþegaskýli / Passenger shelter Hótel Reykjahlíð við Mývatn / Hotel Reykjahlid close to lake Myvatn Hliðarmarkar, rauðir belgir, 5 metra utan brautar / Side marker, red sacs, 5 m from RWY side
REYKJANES / Reykjanes BIRS 655451N 0222517W 10 FT	03/21	780X18	Möl / Gravel	Nei / No	Nei / No	118.8	Isavia ohf. 456 3640 Hindranir rétt við báða enda / Obstr. close to both ends Flugbrautin er án öryggissvæða til beggja hliða / No safety area on both sides of RWY
RIF / Rif * BIRF 645441N 0234923W 18 FT	06 24 11/29	979x30 816X30 822x29	Tjörubundin grús 18 m breið / Asphalt Stabilized Gravel 18 m wide Möl / Gravel	Já / Yes Nei / No	ATS O/R JET A1	118.1	Isavia ohf. 898 9284 Guðjón Hrannar Björnsson 436 6724 / 893 3604 Björn Jónsson Farþegaskýli / Passenger shelter Blikkandi kenniljós við þröskuld á braut 06/24 THR ID lights RWY 06/24 1542 FT mastur 3NM vestur af flugvelli / 1542 FT mast 3NM west of airport

* Aðflugskort

* Instrument Approach Chart

AERODROME/ LANDING STRIP Location Indicator Coordinates (ARP) Location Elevation (ft)	RWY	Dimensions (m)	Surface	Light	ATS Fuel	COM FREQ (mHZ)	Aerodrome Operator Tel. (Fax) Regulations and restrictions Remarks
SANDSKEIÐ / Sandskeid BISS 640339N 0213429W 600 FT	15/33	799x18	Tjörubundin grús / Asphalt Stabilized Gravel	Nei / No	Nei / No	119.9	Ath.: Svifflug er stundað á svæðinu / Note: Gliderarea Automatic WX info. Freq. 135.00 MHz. Key TX 3 times to start the WX transmission. / Sjálfvirk veðurstöð. Tíðni 135.00 MHz. Lyklið sendi þrisvar sinnum til að ræsa veðursendingar.
SAUÐÁRFLUGVÖLLUR / Saudarflugvöllur BISA 6450N 01602W 2200 FT	03/21 06/24 10/28 13/31 18/36	Möl / Gravel Möl / Gravel Möl / Gravel Möl / Gravel Möl / Gravel	740 x 20 1180 x 30 880 x 30 660 x 20 640 x 20	Nei / No Nei / No Nei / No Nei / No Nei / No	Nei / No	118.1	Einkavöllur / Private 699 1414 Ómar Ragnarsson Hálendisflugvöllur, möguleg notkun árstíðabundin. Tölulegar upplýsingar um hnit flugvallar, hindranir, stærðir flugbrauta og stefnur koma frá rekstraraðila flugvallarins. Ekki eru mikilsverðar hindranir í hindrana- og öryggissvæðum flugvallarins. Hliðar- og endamarkar brautar 06/24 eru rauð-/hvítmálaðir hattar og slíkir markar á öllum brautarmótum. Hliðar- og endamarkar annarra brauta eru rauð-/hvítmálaðir smásteinar á víxl. Flugmenn skulu kynna sér vel ástand flugvallarins fyrir notkun. Húsbíll á staðnum GSM samband
SELFOSS / Selfoss BISF 635545N 0210216W 47 FT	05/23 15/33	605*x30 794x30	Möl / Gravel Möl / Gravel	Já / Yes Nei / No	100 LL	118.1	Einkavöllur / Private 482 1405 863 8274 Farþegaskýli / Passenger shelter
<p>Til að kveikja á brautarljósum, á braut 05/23, lyklið 122.8 Mhz: / For LGTs on RWY 05/23 key on 122.8 Mhz MIN BRIGHT 3 times MED “ 5 times MAX “ 7 times</p> <p>Ljós slökknar eftir 18 min. / Lights turn off after 18 min.</p> <p>Umferðarhringir / Traffic pattern: RWY 05/23 west of RWY RWY 15/33 south of RWY</p> <p>Næturtakmarkanir: Á milli 23:00 og 07:00 eru flugtök bönnuð. Heimilt er að víkja frá þessu í neyðartilvikum og skal það skráð sérstaklega. / Night restrictions: Between 23:00 and 07:00 - Takeoffs not permitted.</p> <p>Emergency exemptions should be recorded.</p> <p>Snertilendingar eru einungis leyfðar virka daga frá 07:00 til 18:00. / Touch and go landings are only permitted weekdays between 07:00 and 18:00</p> <p>Hávaðavarnir / Noise abatement procedures: Sjá / See: Supplement about Selfossflugvöllur.</p> <p>Ekki eru gefnar út tilkynningar um snjóalög á flugbrautum, en flugmenn eru hvattir til að kynna sér ástand brautanna fyrir notkun / Snowtam not published, pilots are encouraged to check RWY conditions.</p> <p>*Tímabundin stytting vegna uppgræðslu brautar.</p>							

* Aðflugskort

* Instrument Approach Chart

AERODROME/ LANDING STRIP Location Indicator Coordinates (ARP) Location Elevation (ft)	RWY	Dimensions (m)	Surface	Light	ATS Fuel	COM FREQ (mHZ)	Aerodrome Operator Tel. (Fax) Regulations and restrictions Remarks
SIGLUFJÖRÐUR / Siglufjordur * BISL 6608N 01855W 10 FT	06/24	799x23	Tjörubundin grús / Asphalt Stabilized Gravel	Nei / No	Nei / No	118.1	Isavia ohf. 467 1470 894 9375 Farþegaskýli / Passenger shelter
SKAFTAFELL / Skaftafell BISL 640014N 0165653W 284 FT	15/33 17/35	610x20 1020x25	Möl / Gravel Möl / Gravel	Nei / No Nei / No	100 LL Takmarkað og árstíðar- bundið / Limited and Seasonal	118.1	Einkavöllur / Private 478 2406 Jón Grétar Sigurðsson 899 2532 Jón Grétar Sigurðsson Ráðlagt að hafa samband símleiðis / Recommended to Contact by Phone Flugrekstur á tímabilinu júní til sept. / Flight operation June to September Þegar komið er í nánunda við flugvöllinn ætti að kalla á flugvöllinn í Skaftafelli á tíðninni 118.1 MHz / When flying into the vicinity of the aerodrome a radio call to "Skaftafell Airport" should be transmitted on 118.1 MHz. Þjófgarður NV af flugvelli / National Park NV of airport Vegur við þröskuld brautar 33 og 35 / Road at RWY threshold 33 and 35 Hótel Skaftafell / Hotel Skaftafell Tjaldstæði / Camping place
SKÁLAVATN / Skalavatn BISV 640657N 0184700W 2000 FT	06/24	700x35	Möl / Gravel	Nei / No	Nei / No	118.1	Isavia ohf. 899 5801 Bragi Pálmason
SKÓGASANDUR / Skogasandur BISK 633102N 0192921W 130 FT	13/31	1165x27	Möl / Gravel	Nei / No	Nei / No	118.1	Isavia ohf. 899 5801 Bragi Pálmason Neyðarskýli / Emergency shelter
SPRENGISANDUR / Sprengisandur BISP 643915N 0182949W 2050 FT	06/24 10/28	950x50 600x40	Möl / Gravel Möl / Gravel	Nei / No Nei / No	Nei / No	118.1	Isavia ohf. 899 5801 Bragi Pálmason Neyðarskýli / Emergency shelter Yfirborð frekar mjúkt, eftsta lagið laust / Surface rather soft and loose.
STÓRIKROPPUR / Stórikroppur BISR 643804N 0212915W 165 FT	06/24	700x18	Tjörubundin grús / Asphalt Stabilized Gravel	Nei / No	100 LL Takmarkað / Limited	118.1	Isavia ohf. 694 4676 Snorri Kristleifsson 899 5801 Bragi Pálmason
STYKKISHÓLMUR / Stykkisholmur * BIST 650329N 0224739W 42 FT	07/25	1120x33	Möl / Gravel	Já / Yes	Nei / No	118.1	Isavia ohf. 894 3611 / 898 9284 Guðjón Hrnannar Björnsson 436 6724 / 893 3604 Björn Jónsson RWY lights / brautarljós Blikkandi kenniljós við þröskuld á braut 07/25 / THR ID lights RWY 07/25 360 FT MSL mastur austan brautar / 360 FT MSL Mast East of RWY Umferðarhringur vestan brautar / Traffic zone west of RWY

* Aðflugskort

* Instrument Approach Chart

AERODROME/ LANDING STRIP Location Indicator Coordinates (ARP) Location Elevation (ft)	RWY	Dimensions (m)	Surface	Light	ATS Fuel	COM FREQ (mHZ)	Aerodrome Operator Tel. (Fax) Regulations and restrictions Remarks
TUNGUBAKKAR MOSFELLSBÆ / Tungubakkar Mosfellsbae BIMS 641052N 0214228W 18 FT	07/25	540x45	Gras / Grass	Nei / No	100 LL Eingöngu fyrir félagsmenn / Club members only	118.2	Einkavöllur Flugklúbbs Mosfellsbæjar / Private, Mossfellsbaer Flight Club Afnót einungis heimil félagsmönnum og gestum þeirra. Gestum flugvallarins ber að kynna sér ástand flugvallarins og aðstæður áður en lent er á flugvælinum / (Prior Permission Required, PPR) Flugvöllurinn á Tungubökkum er opin til flugtaks og landingar milli klukkan 07:00 og 22:30. Landingar eru þó leyfðar utan þess tíma. / Open between 07:00 and 22:30. Allt listflug í vallarsviði er bannað nema sem hluti af auglýstri dagskrá Flugklúbbsins. / Aerobatic flight not permitted Flugvélar með meira en 200 HP ekki leyfðar nema í neyðartilfellum / Aircraft with more than 200 HP not permitted except for emergency Vallarsvið, sjá ENR 2.1-10 / Aerodrome Traffic Zone , see ENR 2.1-10 899 6575 Sigurjón Valsson 897 7738 Guðni Þorbjörnsson
VARMAHLÍÐ / Varmahlid BIVH 653325N 0192541W 27 FT	12/30	650x24	Gras / Grass	No/Nei	No/Nei	119.1	Einkavöllur / Private 453 5771 Rúnar Gislason 894 5370 Rúnar Gislason
VÍK / Vik BIVI 632518N 0185318W 100 FT	06/24	712x25	Mól / Gravel	Nei / No	Nei / No	118.1	Isavia ohf. 487 1243 Reynir Ragnarsson 849 4941 Reynir Ragnarsson Neyðarskýli / Emergency shelter
ÞÓRSMÖRK / Thorsmörk BITM 634124N 0193347W 620 FT	09/27	770x28	Mól / Gravel	Nei / No	Nei / No		Isavia ohf. Neyðarskýli / Emergency shelter GSM-samband gott /GSM signal good 899 5801 Bragi Pálmason

* Aðflugskort

* Instrument Approach Chart

THIS PAGE INTENTIONALLY LEFT BLANK

AD 4.2 Kortalisti

AD 4.2 List of Charts

Bakki NDB A

Blonduos NDB 177°

Djupivogur RNAV(GNSS) 031

Husavik - Aerodrome Ground Movement Chart

Husavik RNAV (GNSS) RWY 03

Husavik NDB RWY 03

Nordfjordur - Aerodrome Ground Movement Chart

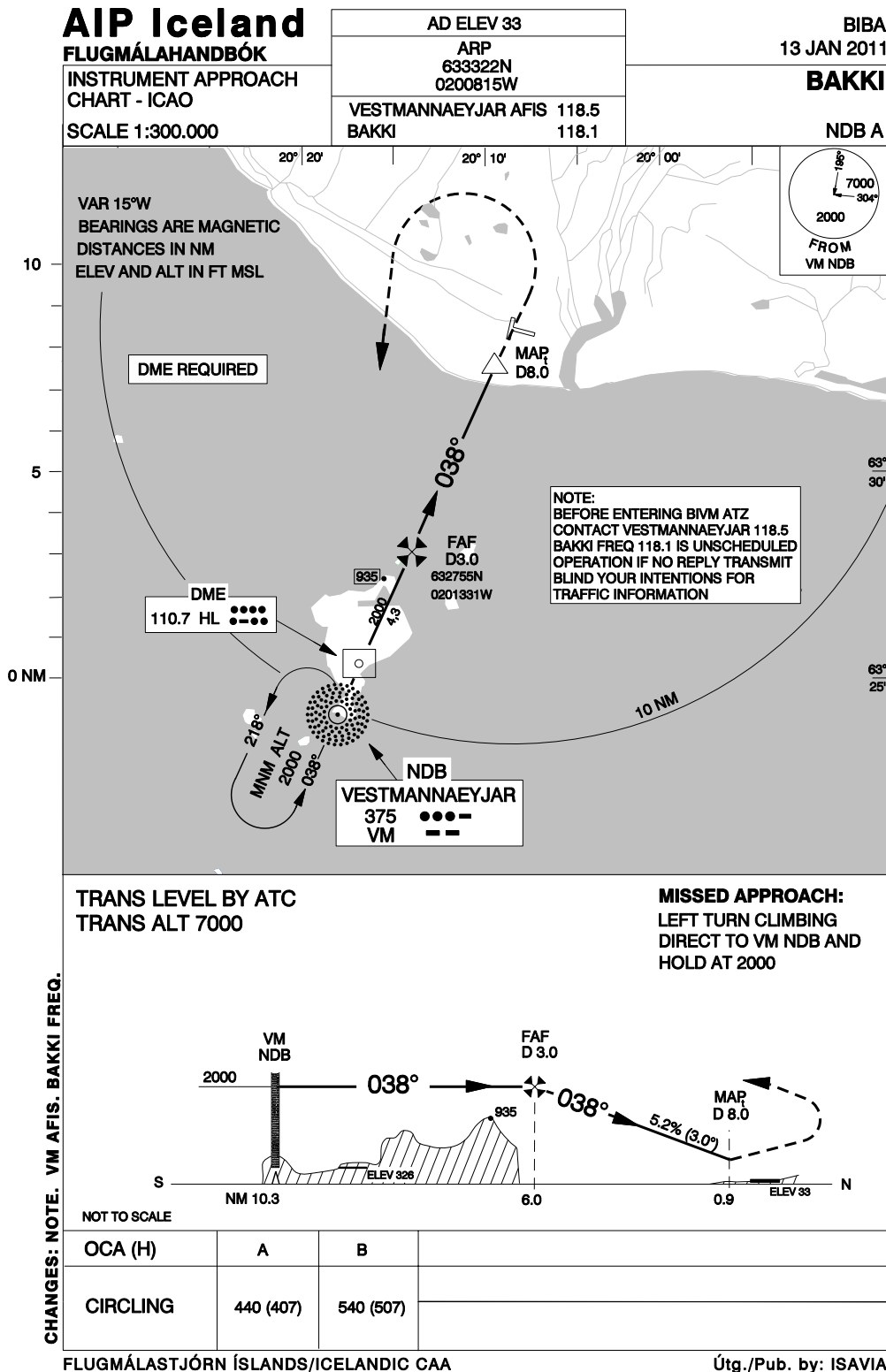
Nordfjordur RNAV(GNSS) 254

Reykjahlid RNAV(GNSS) RWY 02

Rif - Aerodrome Ground Movement Chart

Rif NDB RWY 24

THIS PAGE INTENTIONALLY LEFT BLANK



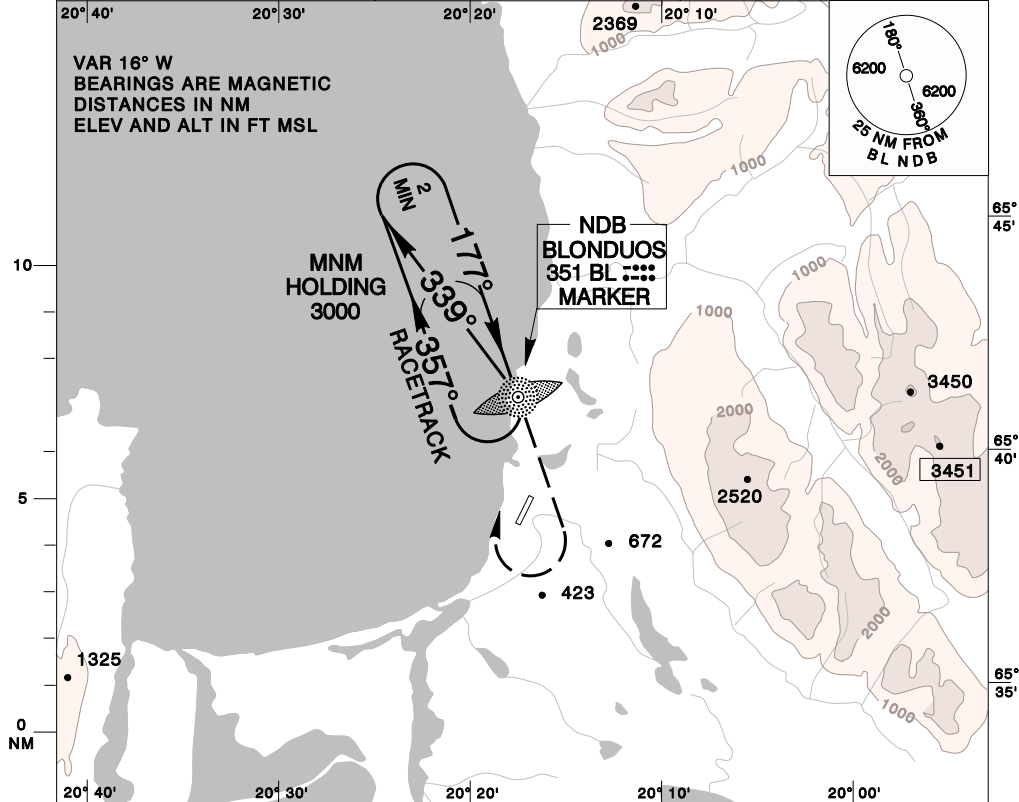
THIS PAGE INTENTIONALLY LEFT BLANK

AIP Iceland
FLUGMÁLAHANDBÓK

AD ELEV	131
ARP 653842N 0201715W	
BLONDUOS	118.6
ACC	119.7

BIBL
3 JUN 2010
BLONDUOS
NDB 177°

**INSTRUMENT APPROACH
CHART - ICAO**
SCALE 1: 300 000

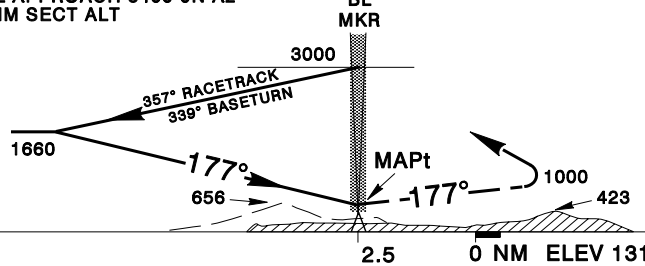


TRANS LEVEL BY ATC
TRANS ALT 7000

MISSED APPROACH
CLIMB ON 177° TO
1000 RIGHT TURN
TO BL NDB AND HOLD
AT 3000

INITIAL APPROACH 5400 ON A2
OR MNM SECT ALT

CHANGES: VAR. EDITORIAL.



OCA(H)	A	B	C	D	BLONDUOS FREQ. 118.6 IS A UNSCHEDULED OPERATION IF NO REPLY. TRANSMIT BLIND YOUR INTENTIONS FOR TRAFFIC INFORMATION.
Straight-in					
Approach					
CIRCLING	730/(599)				CIRCLE WEST OF FIELD

ICELANDIC CAA/FLUGMÁLASTJÓRN ÍSLANDS

Pub. by: ISAVIA/Útg.: FLUGSTOÐIR ohf

THIS PAGE INTENTIONALLY LEFT BLANK

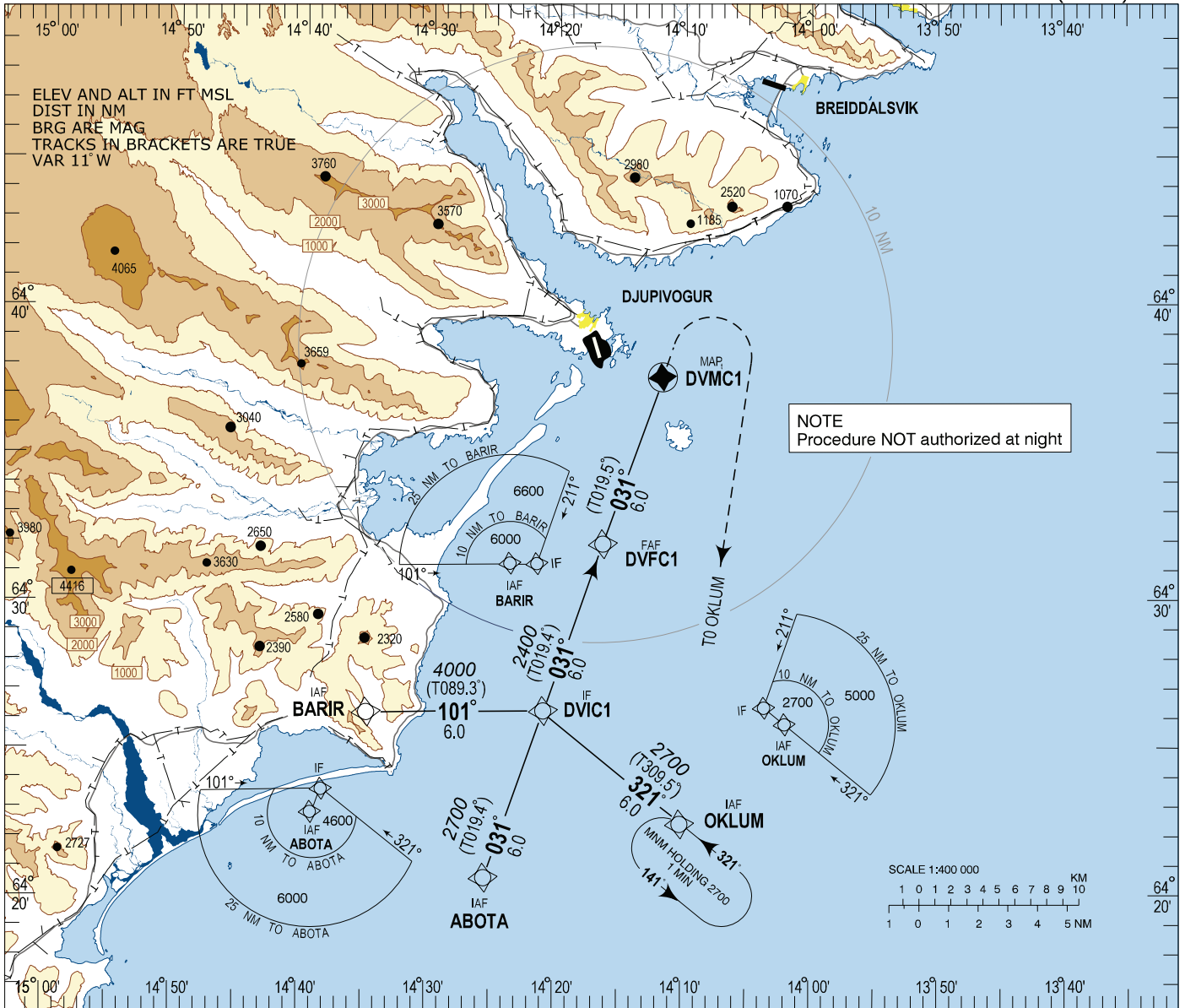
INSTRUMENT
APPROACH
CHART - ICAO

AERODROME ELEV 9

DJUPIVOGUR 118.1
(BREIDDALSVIK 118.1)
REYKJAVIK ACC 119.7

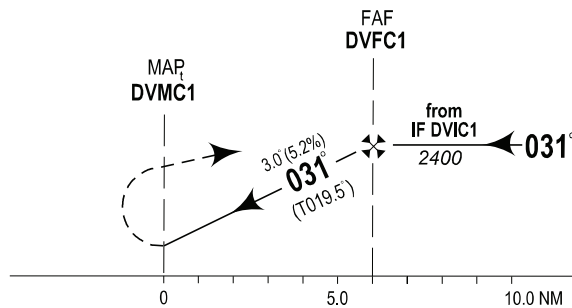
BIDV - DJUPIVOGUR

RNAV (GNSS) 031



TRANSITION ALT 7000

MISSED APPROACH:
RIGHT CLIMBING TURN DIRECT
TO OKLUM AND HOLD AT 2700'.



PROFILE SCALE 1:400 000

OCA (H)	A	B	REMARKS
LNNAV	500 (491)	500 (491)	* See below
* Proceed visually from DVMC1 to Djupivogur Airport, 305 / 2.5 NM			

DIST TO DVMC1	6	5	4	3	2	1
ALTITUDE	2400	2090	1770	1450	1130	820

Timing not authorized for defining MAP

GS	kt	100	120	150	180
DVFC1-DVMC1 (6.0 NM)	MIN:SEC	3:36	3:00	2:24	2:00
Rate of descent 3.0% (5.2%)	ft/MIN	530	640	790	960

CHANGES: NEW CHART

BIDV RNAV(GNSS) 03I
Instrument Approach Procedure Coding Tables

BIDV RNAV(GNSS) 03I via BARIR

Serial Number	Path Descriptor	Waypoint Identifier	Fly-over	Course / Track °M(°T)	Magnetic Variation	Distance	Turn Direction	Altitude (ft)	Speed (kt/h)	VPA/TCH	Navigation Specification
001	IF	BARIR	-		+11.3			+6000			RNP APCH
002	TF	DVICI	-	101 (089.3)	+11.2	6.0	L	+4000			RNP APCH
003	TF	DVFCI	-	031 (019.4)	+11.2	6.0		@2400			RNP APCH
004	TF	DVMCI	Y	031 (019.5)	+11.2	6.0		500		3.0/-	RNP APCH
005	DF	OKLUM	-		+11.2		R				RNP APCH
006	HM	OKLUM	Y	321 (309.5)	+11.0		L	2700			RNP APCH

BIDV RNAV(GNSS) 03I via ABOTA

Serial Number	Path Descriptor	Waypoint Identifier	Fly-over	Course / Track °M(°T)	Magnetic Variation	Distance	Turn Direction	Altitude (ft)	Speed (kt/h)	VPA/TCH	Navigation Specification
001	IF	ABOTA	-		+11.1			+4600			RNP APCH
002	TF	DVICI	-	031 (019.4)	+11.2	6.0		+2700			RNP APCH
003	TF	DVFCI	-	031 (019.4)	+11.2	6.0		@2400			RNP APCH
004	TF	DVMCI	Y	031 (019.5)	+11.2	6.0		500		3.0/-	RNP APCH
005	DF	OKLUM	-		+11.2		R				RNP APCH
006	HM	OKLUM	Y	321 (309.5)	+11.0		L	2700			RNP APCH

BIDV RNAV(GNSS) 03I via OKLUM

Serial Number	Path Descriptor	Waypoint Identifier	Fly-over	Course / Track °M(°T)	Magnetic Variation	Distance	Turn Direction	Altitude (ft)	Speed (kt/h)	VPA/TCH	Navigation Specification
001	IF	OKLUM	-		+11.0			+2700			RNP APCH
002	TF	DVICI	-	321 (309.5)	+11.2	6.0	R	+2700			RNP APCH
003	TF	DVFCI	-	031 (019.4)	+11.2	6.0		@2400			RNP APCH
004	TF	DVMCI	Y	031 (019.5)	+11.2	6.0		500		3.0/-	RNP APCH
005	DF	OKLUM	-		+11.2		R				RNP APCH
006	HM	OKLUM	Y	321 (309.5)	+11.0		L	2700			RNP APCH

Waypoint coordinates -

Waypoint Identifier	Coordinates		Display	
BARIR	642612.00N	0143430.00W	6426.20N	01434.50W
ABOTA	642037.00N	0142515.00W	6420.62N	01425.25W
OKLUM	642228.00N	0140959.00W	6422.47N	01409.98W
DVICI	642615.89N	0142039.42W	6426.26N	01420.66W
DVFCI	643154.20N	0141602.04W	6431.90N	01416.03W
DVMCI	643732.37N	0141122.74W	6437.54N	01411.38W

AIP Iceland
FLUGMÁLAHANDBÓK

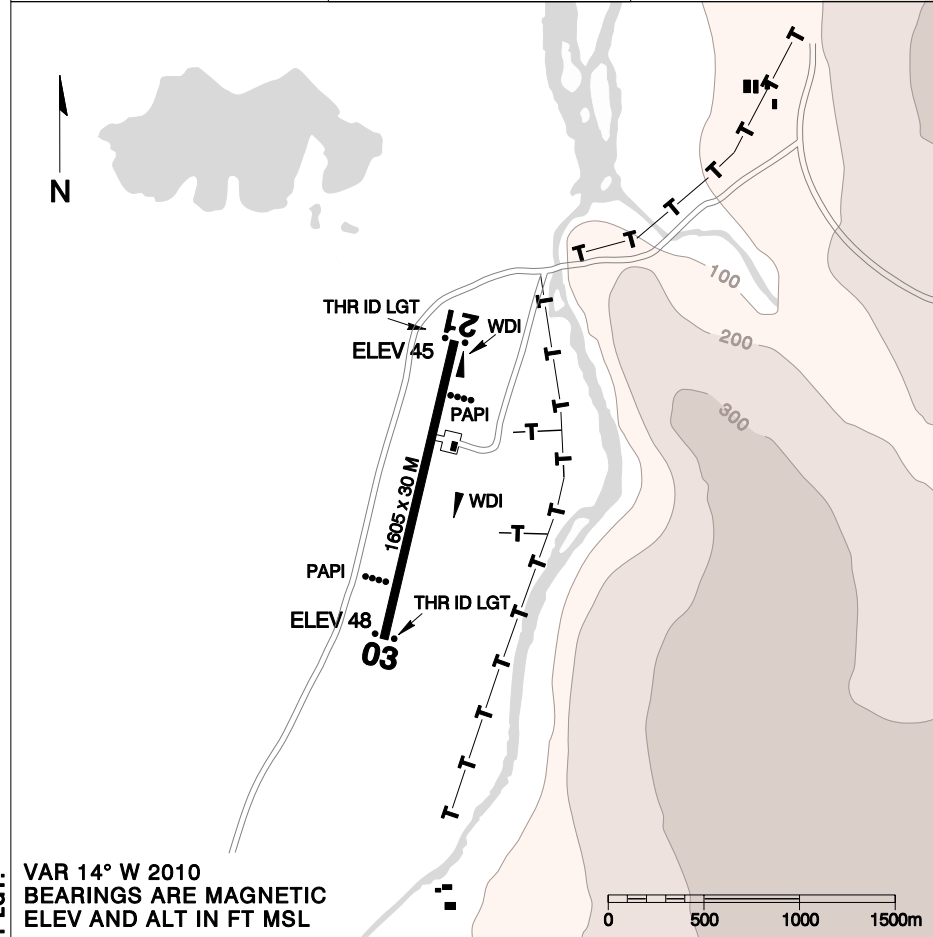
**AERODROME GROUND
MOVEMENT CHART**
SCALE 1: 40 000

ELEV 48

ARP:
655709N
0172533W

BIHU
28 JUN 2012

HUSAVIK



CHANGES: CHART NAME. RWY WID. RWY LGT.

VAR 14° W 2010
BEARINGS ARE MAGNETIC
ELEV AND ALT IN FT MSL

APPROACH LIGHTING

PAPI GP 3.0° RWY 03/21
THR ID LGT. RWY 03/21

RUNWAY LIGHTING

EDGE LGT: 9 M FROM RWY EDGE
THR LGT: G LIM RWY 03/21
RWY LGT: W LIM RWY 03/21

THR COORDINATES:

RWY 03: 655643.57N 0172546.13W
RWY 21: 655734.32N 0172520.62W

FACILITIES AVAILABLE

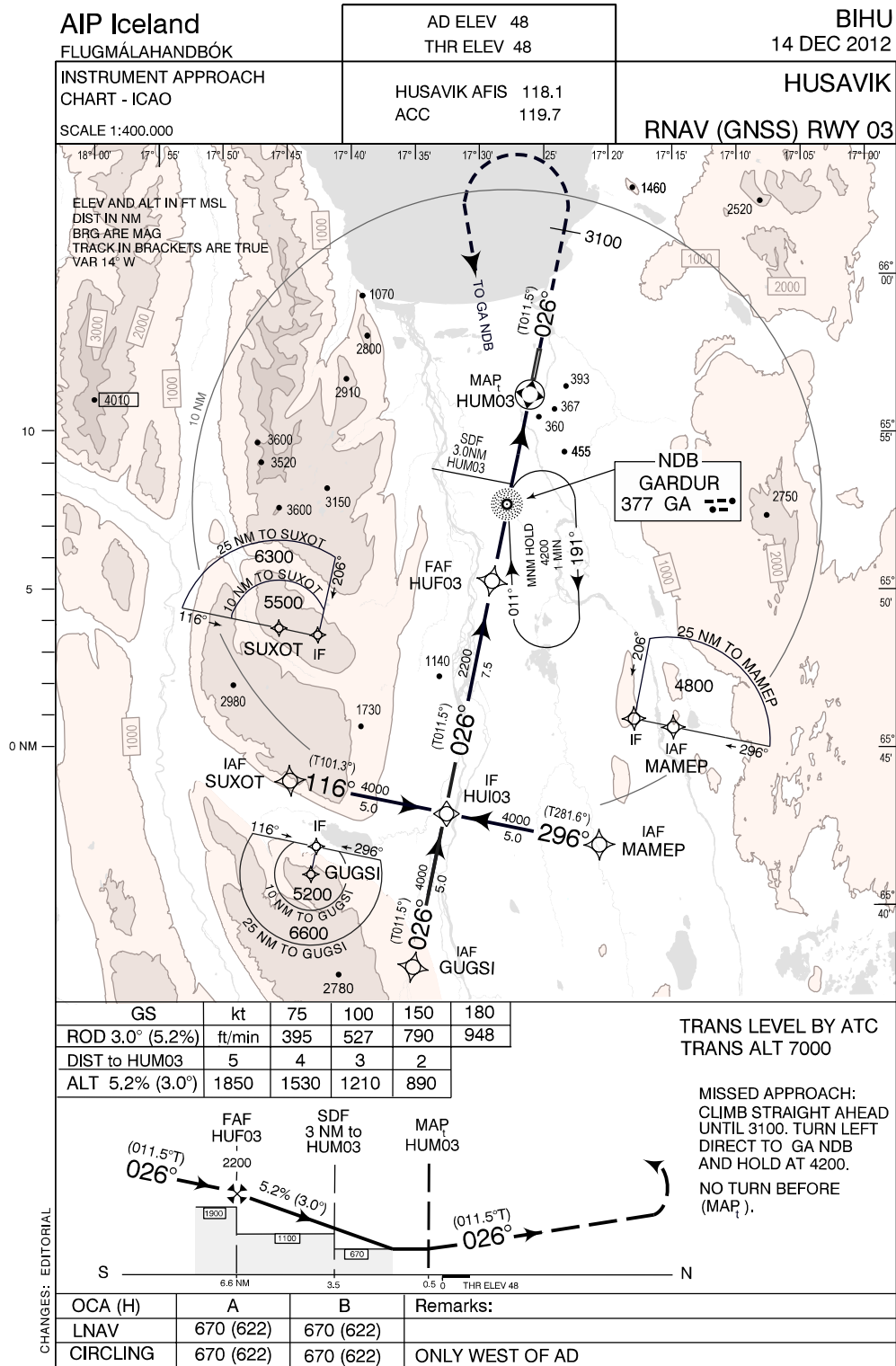
PASSENGER SHELTER
HOTEL IN TOWN
HOSPITAL IN TOWN
TRANSPORT O/R

TYPE OF RUNWAY SURFACE
ASPHALT STABILIZED GRAVEL

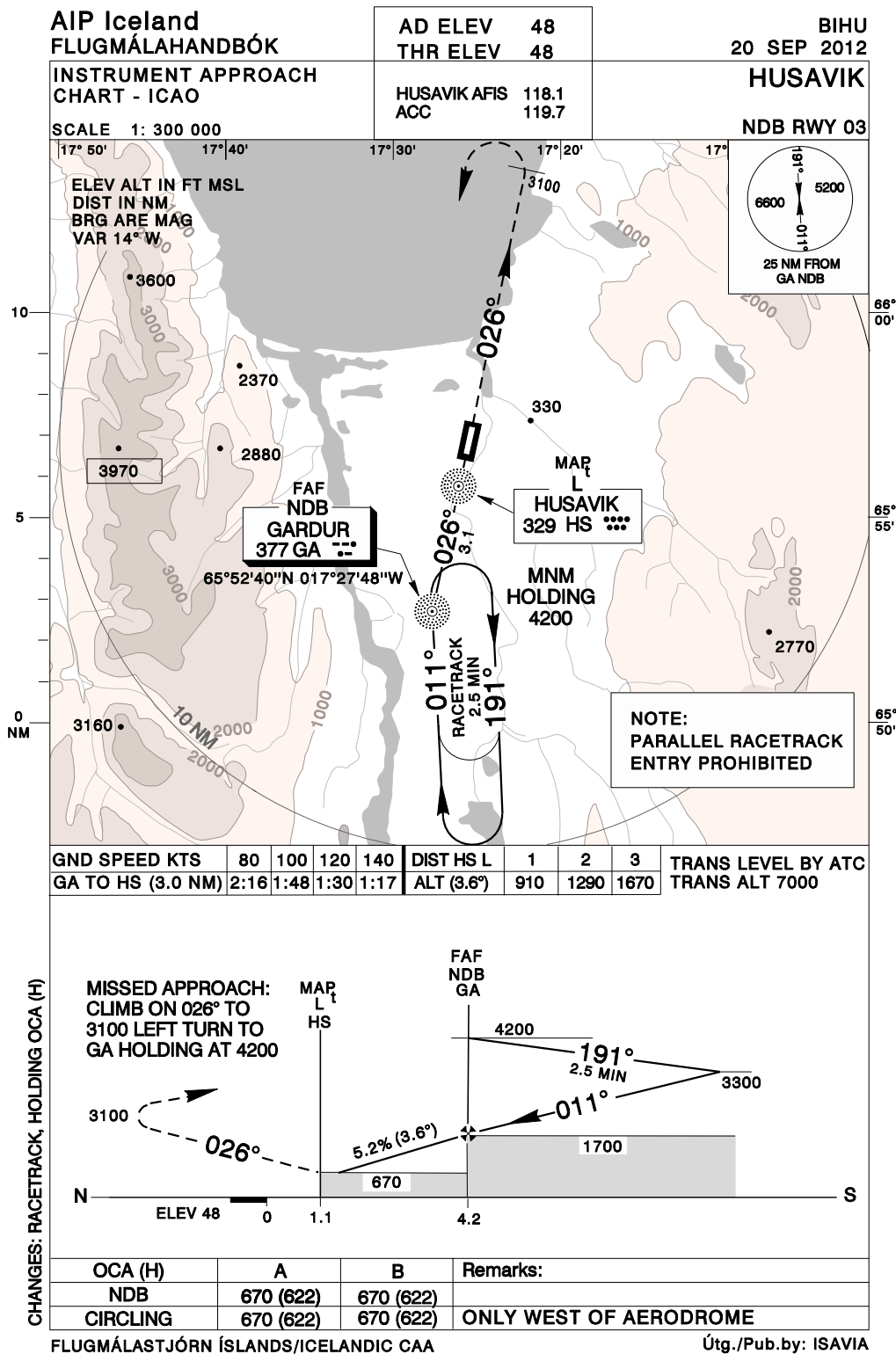
TRUE BEARING OF RUNWAY
012°/192°

T/O MINIMA

THIS PAGE INTENTIONALLY LEFT BLANK



THIS PAGE INTENTIONALLY LEFT BLANK



THIS PAGE INTENTIONALLY LEFT BLANK

AIP Iceland
FLUGMÁLAHANDBÓK

AD ELEV 5

BINF
7 FEB 2013

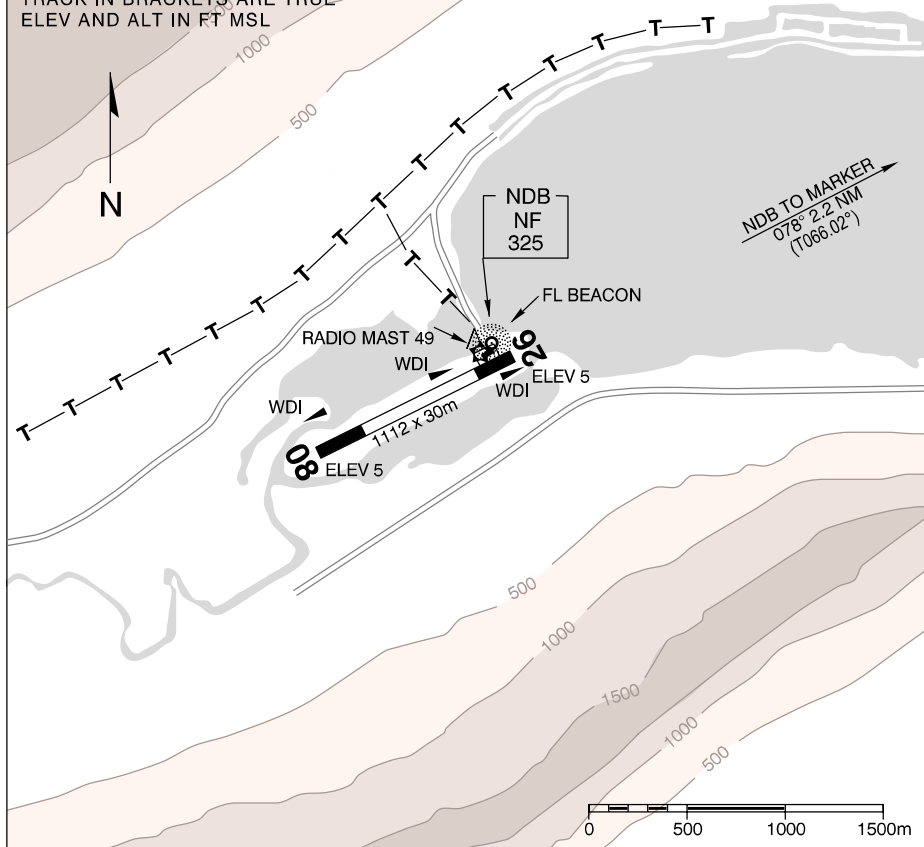
AERODROME GROUND
MOVEMENT CHART

ARP
65 07 55N
013 44 47 W

NORDFJORDUR

SCALE 1: 40 000

VAR 12°W 2010
BEARINGS ARE MAGNETIC
TRACK IN BRACKETS, ARE TRUE
ELEV AND ALT IN FT MSL



LIGHTING
EMERGENCY RWY LIGHTS O/R

FACILITIES AVAILABLE
PASSENGER SHELTER
HOTEL IN TOWN
HOSPITAL IN TOWN
TRANSPORT O/R

TRUE BEARING OF RUNWAY
064°/244°

THR COORDINATES
THR 08: 650748N 0134526W
THR 26: 650801N 0134407W

TYPE OF RUNWAY SURFACE
COMP SAND AND GRAVEL
RWY END 08 250 X 20 ASPHALT STABILIZED GRAVEL
RWY END 26 100 X 20 ASPHALT STABILIZED GRAVEL

T/O MINIMA

CHANGES: NOTE REMOVED

FLUGMÁLASTJÓRN ÍSLANDS/ICELANDIC CAA

Útg./Pub. by: ISAVIA

THIS PAGE INTENTIONALLY LEFT BLANK

AIP Iceland

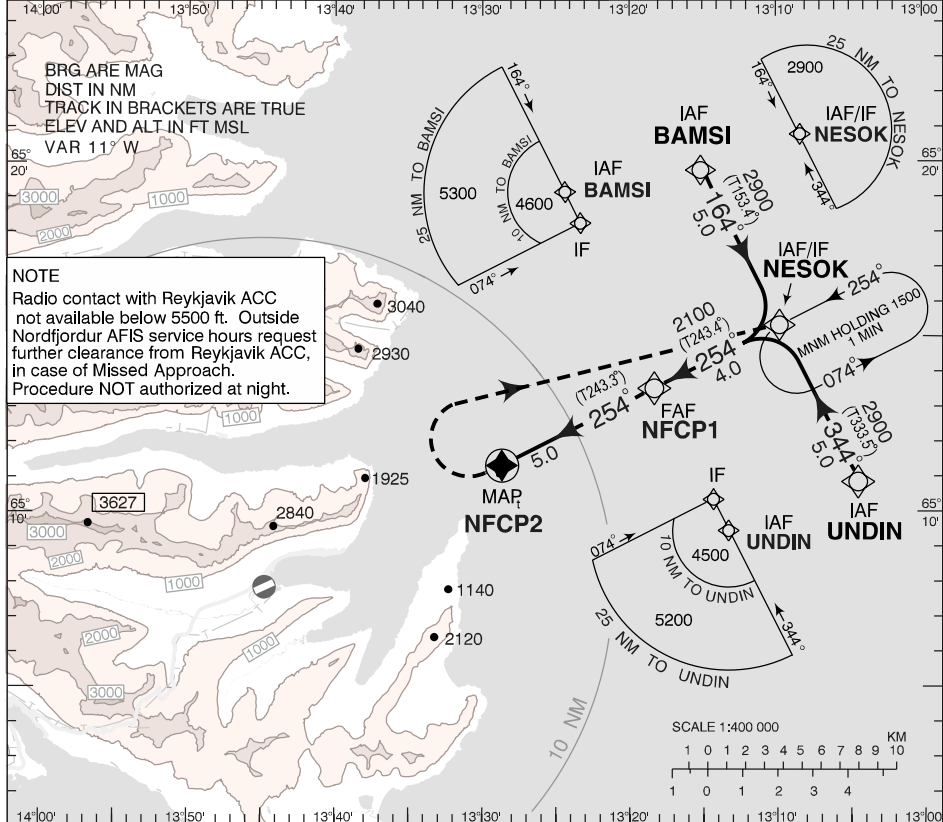
FLUGMÁLAHANDBÓK

AD ELEV	5
INSTRUMENT APPROACH CHART - ICAO	
NORDFJORDUR AFIS	118.1
REYKJAVIK ACC	119.7

BINF
4 APR 2013

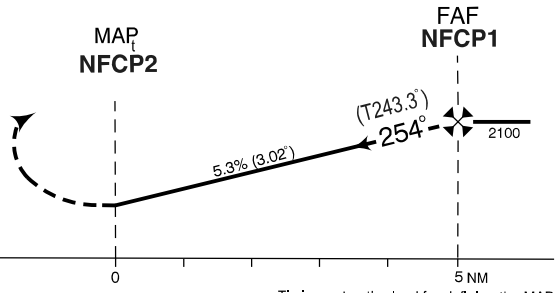
NORDFJORDUR

RNAV(GNSS) 254



TRANSITION ALT 7000

MISSED APPROACH
Right climbing turn (MAX IAS 130 kt) direct to NESOK and hold at 2900.



CHANGES: NEW CHART

Timing not authorized for defining the MAP						
GS	kt	80	100	120	140	160
NFCP1-NFCP2 (5.0NM)	MIN:SEC	3:45	3:00	2:30	2:09	1:52
Rate of descent (5.2%)	ft/MIN	420	530	640	750	850

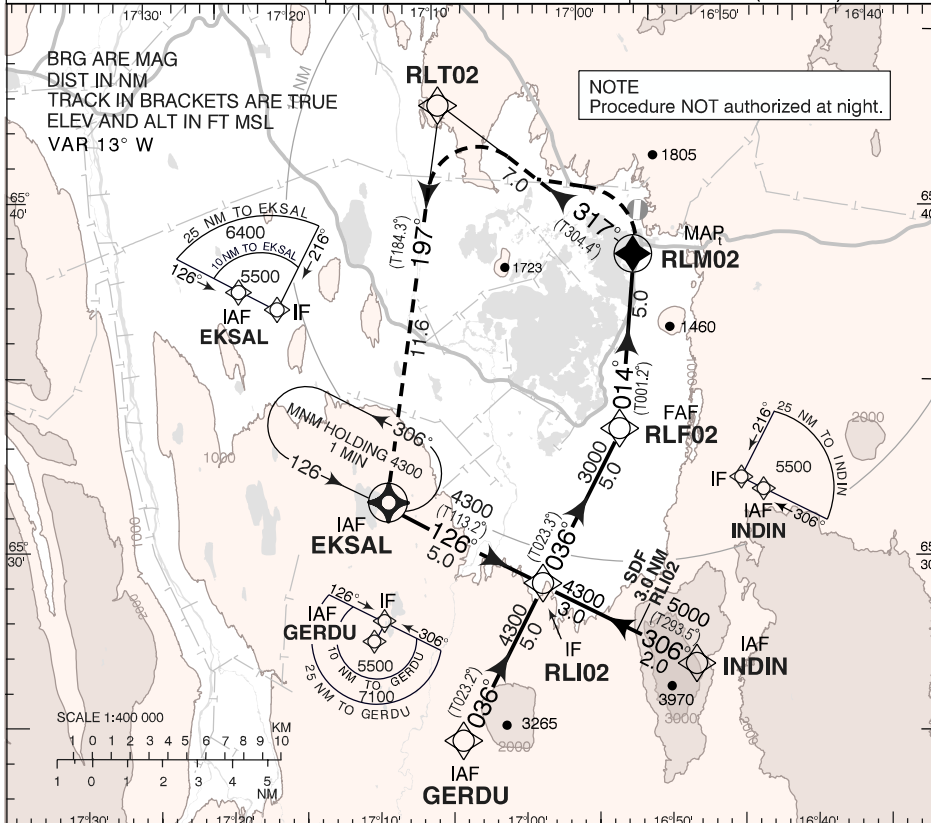
OCA (H)	A	B	Remarks
LNAV Cloud Penetration	500 (495)	500 (495)	Proceed Visually from NFCP2 to Nordfjordur Airport, 254° / 7.5 NM

FLUGMÁLASTJÓRN ÍSLANDS/ISAVIA

Útg./Pub. by: ISAVIA

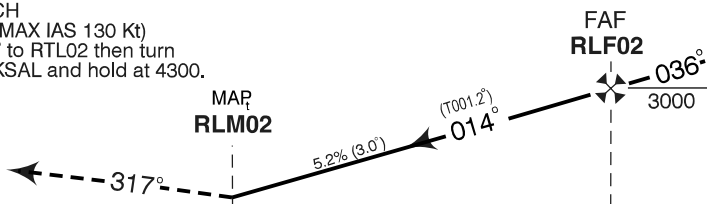
THIS PAGE INTENTIONALLY LEFT BLANK

AIP Iceland FLUGMÁLAHANDBÓK	AD ELEV 1031	BIRL 4 APR 2013
	INSTRUMENT APPROACH CHART - ICAO	REYKJAHLLID 118.1 REYKJAVIK ACC 119.7



TRANSITION ALT 7000	DIST to RLM02	1	2	3	4
	ALTITUDE	1720	2040	2350	2670

MISSED APPROACH
Left climbing turn (MAX IAS 130 Kt)
climb on track 317° to RLM02 then turn
left track 197° to EKSAL and hold at 4300.



THR ELEV 1031

NM from THR RWY 02

Timing not authorized for defining the MAP

GS	kt	80	100	120	140	160
RLF02-RLM02 (5.0 NM)	MIN:SEC	3:45	3:00	2:30	2:09	1:52
Rate of descent (5.2%)	ft/MIN	420	530	640	750	850

OCA (H)		A	B	Remarks
LNAV	GRAD 2.5%	1520 (489)	1550 (519)	Minimum Visibility 3 km
	GRAD 4.0%	1410 (379)	1440 (409)	Minimum Visibility 3 km
CIRCLING		2070 (1039)	2240 (1209)	Only West of Aerodrome Minimum Visibility 5 km

CHANGES: NEW CHART

FLUGMÁLASTJÓRN ÍSLANDS/ISAVIA

Útg./Pub. by: ISAVIA

THIS PAGE INTENTIONALLY LEFT BLANK

AIP Iceland
FLUGMÁLAHANDBÓK

**AERODROME GROUND
MOVEMENT CHART**

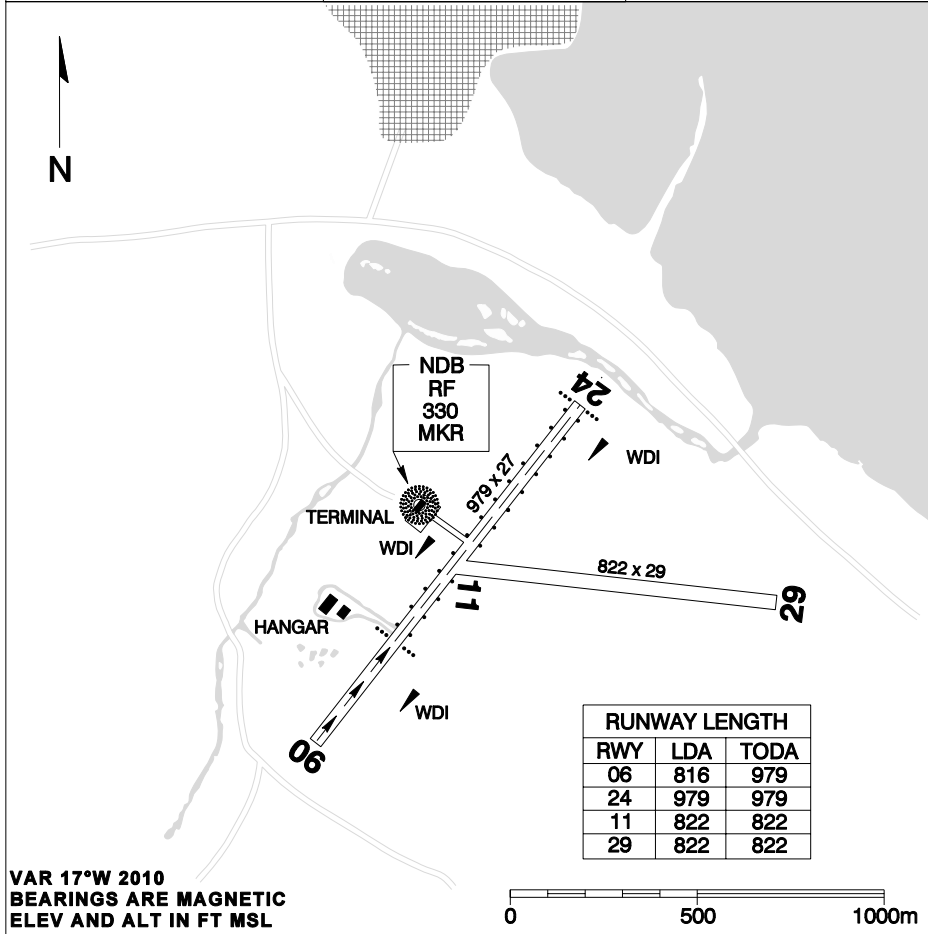
SCALE 1: 20 000

AD ELEV 18

AD REF POINT
645441 N
0234923W

BIRF
28 JUN 2012

RIF



CHANGES: RWY WIDTH

APPROACH LIGHTING
THR ID LGT RWY 24/06

RUNWAY LIGHTING
RWY LGT: W LIM RWY 24/06
THR LGT: G LIM RWY 24/06

FACILITIES AVAILABLE
PASSENGER ACCOMMODATION
FUEL AVGAS 100 LL/JET A1
HOTEL

TRUE BEARING OF RUNWAY
039°/219°
098°/278°

RUNWAY WIDTH
06/24 27 M
11/29 29 M

TYPE OF RUNWAY SURFACE
RWY 24/06 18 M WIDE ASPHALT
STABILIZED GRAVEL
RWY 29/11 29 M WIDE GRAVEL

T/O MINIMA

FLUGMÁLASTJÓRN ÍSLANDS/ICELANDIC CAA

Útg./Pub.by: ISAVIA

THIS PAGE INTENTIONALLY LEFT BLANK

AIP Iceland
FLUGMÁLAHANDBÓK

AD ELEV 18

BIRF
3 MAY 2013

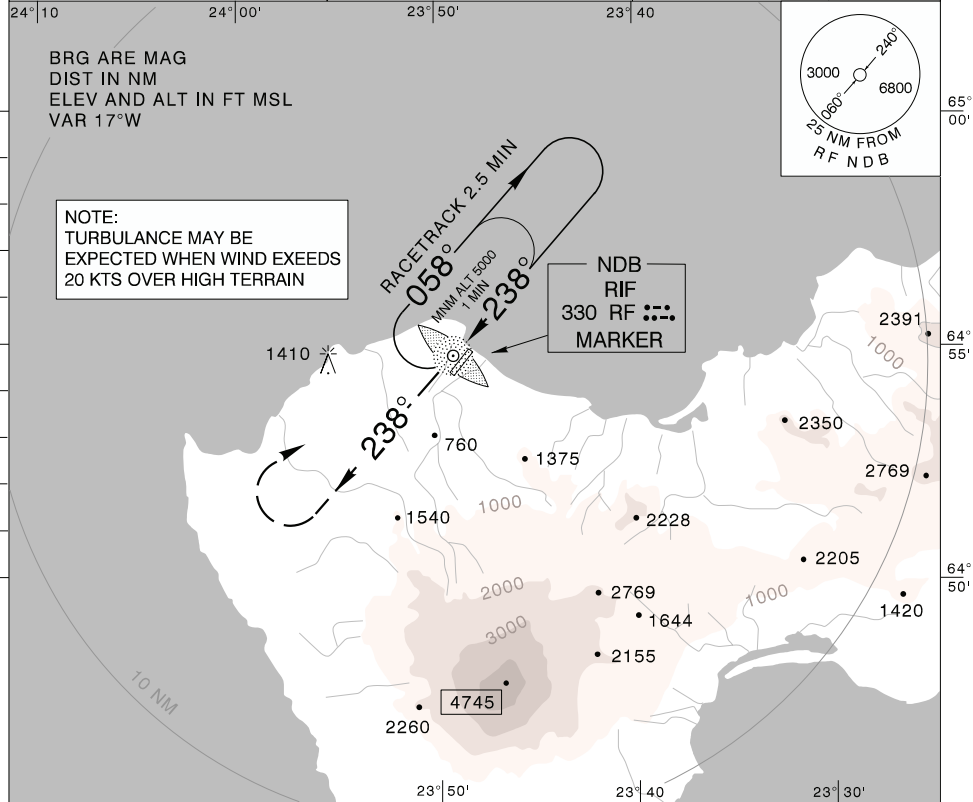
INSTRUMENT APPROACH
CHART - ICAO

RIF AFIS 118.1
ACC 119.7

RIF

SCALE 1: 300 000

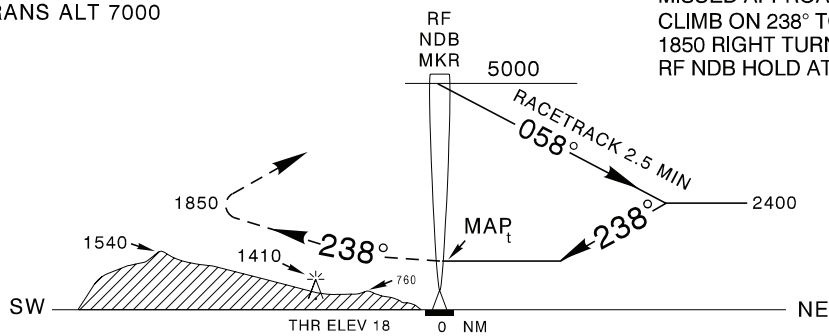
NDB RWY 24



TRANS LEVEL BY ATC
TRANS ALT 7000

MISSED APPROACH:
CLIMB ON 238° TO
1850 RIGHT TURN TO
RF NDB HOLD AT 5000

CHANGES: ANTENNA ELEV. EDITORIAL.



MAP CLIMB		2.5 %		5.0 %	
OCA (H)		A	B	A	B
Straight-in Approach	RWY 24	1280 (1262)		870 (852)	
	CIRCLING	1850 (1832)			

FLUGMÁLASTJÓRN ÍSLANDS/ICELANDIC CAA

Útg./Pub.by: ISAVIA

THIS PAGE INTENTIONALLY LEFT BLANK

AD 4.3 Leiðsöguhnit

4.3.1 Húsavík - Kóðunartöflur fyrir blindaflug

AD 4.3 Waypoint List

4.3.1 Husavik - Instrument Approach Procedure Coding Tables

HUSAVIK RNAV(GNSS) RWY 03 VIA SUXOT

Serial Number	Path Descriptor	Waypoint Identifier	Fly-over	Course / Track °M(°T)	Magnetic Variation	Distance	Turn Direction	Altitude (ft)	Speed (kt/h)	VPA/ TCH	Navigation Specification
001	IF	SUXOT	-		+14.2			+5500			RNP APCH
002	TF	HUI03	-	116 (101.3)	+14.2	5.0	L	4000			RNP APCH
003	TF	HUF03	-	026 (011.4)	+14.2	7.5		@2200			RNP APCH
004	TF	HUM03	Y	026 (011.6)	+14.2	6.1				3.00°/ 50	RNP APCH
005	CA		-	026 (011.6)	+14.2		L	3100			RNP APCH
006	DF	GA	-		+14.2			4200			RNP APCH
007	HM	GA	Y	011 (356.6)	+14.2		R	4200			RNP APCH

HUSAVIK RNAV(GNSS) RWY 03 VIA GUGSI

Serial Number	Path Descriptor	Waypoint Identifier	Fly-over	Course / Track °M(°T)	Magnetic Variation	Distance	Turn Direction	Altitude (ft)	Speed (kt/h)	VPA/ TCH	Navigation Specification
001	IF	GUGSI	-		+14.2			+5200			RNP APCH
002	TF	HUI03	-	026 (011.4)	+14.2	5.0		4000			RNP APCH
003	TF	HUF03	-	026 (011.4)	+14.2	7.5		@2200			RNP APCH
004	TF	HUM03	Y	026 (011.6)	+14.2	6.1				3.00°/ 50	RNP APCH
005	CA		-	026 (011.6)	+14.2		L	3100			RNP APCH
006	DF	GA	-		+14.2			4200			RNP APCH
007	HM	GA	Y	011 (356.6)	+14.2		R	4200			RNP APCH

HUSAVIK RNAV(GNSS) RWY 03 VIA MAMEP

Serial Number	Path Descriptor	Waypoint Identifier	Fly-over	Course / Track °M(°T)	Magnetic Variation	Distance	Turn Direction	Altitude (ft)	Speed (kt/h)	VPA/ TCH	Navigation Specification
001	IF	MAMEP	-		+14.2			+4800			RNP APCH
002	TF	HUI03	-	296 (281.6)	+14.2	5.0	R	4000			RNP APCH
003	TF	HUF03	-	026 (011.4)	+14.2	7.5		@2200			RNP APCH
004	TF	HUM03	Y	026 (011.6)	+14.2	6.1				3.00°/ 50	RNP APCH
005	CA		-	026 (011.6)	+14.2		L	3100			RNP APCH
006	DF	GA	-		+14.2			4200			RNP APCH
007	HM	GA	Y	011 (356.6)	+14.2		R	4200			RNP APCH

Waypoint coordinates

Waypoint Identifier	Coordinates
SUXOT	654354.6N 0174429.9W
GUGSI	653802.6N 0173501.8W
MAMEP	654155.7N 0172046.7W
HUI03	654255.6N 0173237.9W
HUF03	655017.0N 0172859.9W
HUM03	655614.3N 0172600.8W
GA	655240.2N 0172747.8W

**4.3.2 Norðfjörður -
Kóðunartöflur fyrir blindaöflug**

**4.3.2 Nordfjordur - Instrument Approach
Procedure Coding Tables**

Nordfjordur RNAV(GNSS) 254 VIA BAMSI

Serial Number	Path Descriptor	Waypoint Identifier	Fly-over	Course / Track °M(°T)	Magnetic Variation	Distance	Turn Direction	Altitude (ft)	Speed (kt/h)	VPA/TCH	Navigation Specification
001	IF	BAMSI	-		+10.9			+4600			RNP APCH
002	TF	NESOK	-	164 (153.4)	+10.8	5.0	R	+2900			RNP APCH
003	TF	NFCPI	-	254 (243.4)	+10.9	4.0		@2100			RNP APCH
004	TF	NFCP2	Y	254 (243.3)	+10.9	5.0	R		130	3.00°/ -	RNP APCH
005	DF	NESOK	-					+1500	130		RNP APCH
006	HM	NESOK	Y	254 (243.4)	+10.8		L	2900			RNP APCH

Nordfjordur RNAV(GNSS) 254 VIA NESOK

Serial Number	Path Descriptor	Waypoint Identifier	Fly-over	Course / Track °M(°T)	Magnetic Variation	Distance	Turn Direction	Altitude (ft)	Speed (kt/h)	VPA/TCH	Navigation Specification
001	IF	NESOK	-		+10.8	5.0	R	2900			RNP APCH
002	TF	NFCPI	-	254 (243.4)	+10.9	4.0		@2100			RNP APCH
003	TF	NFCP2	Y	254 (243.3)	+10.9	5.0	R		130	3.00°/ -	RNP APCH
004	DF	NESOK	-					+1500	130		RNP APCH
005	HM	NESOK	Y	254 (243.4)	+10.8		L	2900			RNP APCH

Nordfjordur RNAV(GNSS) 254 VIA UNDIN

Serial Number	Path Descriptor	Waypoint Identifier	Fly-over	Course / Track °M(°T)	Magnetic Variation	Distance	Turn Direction	Altitude (ft)	Speed (kt/h)	VPA/TCH	Navigation Specification
001	IF	UNDIN	-		+10.7			+4600			RNP APCH
002	TF	NESOK	-	344 (333.5)	+10.8	5.0	L	+2900			RNP APCH
003	TF	NFCPI	-	254 (243.4)	+10.9	4.0		@2100			RNP APCH
004	TF	NFCP2	Y	254 (243.3)	+10.9	5.0	R		130	3.00°/ -	RNP APCH
005	DF	NESOK	-					+1500	130		RNP APCH
006	HM	NESOK	Y	254 (243.4)	+10.8		L	2900			RNP APCH

Waypoint coordinates

Waypoint Identifier	Coordinates	
BAMSI	651950.10N	0131507.23W
NESOK	651522.76N	0130947.22W
UNDIN	651055.22N	0130429.00W
NFCPI	651335.54N	0131817.21W
NFCP2	651120.84N	0132853.08W

**4.3.3 Reykjahlíð -
Kóðunartöflur fyrir blindaflug**

**4.3.3 Reykjahlid - Instrument Approach
Procedure Coding Tables**

REYKJAHLID RNAV(GNSS) RWY 02 VIA EKSAL

Serial Number	Path Descriptor	Waypoint Identifier	Fly-over	Course / Track °M(°T)	Magnetic Variation	Distance	Turn Direction	Altitude (ft)	Speed (kt/h)	VPA/TCH	Navigation Specification
001	IF	EKSAL	-		+13.2			+5500			RNP APCH
002	TF	RLI02	-	126 (113.2)	+13.1	5.0	L	+4300			RNP APCH
003	TF	RLF02	-	036 (023.3)	+13.1	5.0		@3000			RNP APCH
004	TF	RLM02	Y	014 (001.2)	+13.1	5.0				3.00°/50	RNP APCH
005	CF	RLT02	-	317 (304.4)	+13.2	7.0	L		-130		RNP APCH
006	TF	EKSAL	-	197 (184.3)	+13.1	11.6	L	4300			RNP APCH
007	HM	EKSAL	Y	126 (113.2)	+13.1		L	4300			RNP APCH

REYKJAHLID RNAV(GNSS) RWY 02 VIA GERDU

Serial Number	Path Descriptor	Waypoint Identifier	Fly-over	Course / Track °M(°T)	Magnetic Variation	Distance	Turn Direction	Altitude (ft)	Speed (kt/h)	VPA/TCH	Navigation Specification
001	IF	GERDU	-		+13.1			+5500			RNP APCH
002	TF	RLI02	-	036 (023.2)	+13.1	5.0		+4300			RNP APCH
003	TF	RLF02	-	036 (023.3)	+13.1	5.0		@3000			RNP APCH
004	TF	RLM02	Y	014 (001.2)	+13.1	5.0				3.00°/50	RNP APCH
005	CF	RLT02	-	317 (304.4)	+13.2	7.0	L		-130		RNP APCH
006	TF	EKSAL	-	197 (184.3)	+13.1	11.6	L	4300			RNP APCH
007	HM	EKSAL	Y	126 (113.2)	+13.1		L	4300			RNP APCH

REYKJAHLID RNAV(GNSS) RWY 02 VIA INDIN

Serial Number	Path Descriptor	Waypoint Identifier	Fly-over	Course / Track °M(°T)	Magnetic Variation	Distance	Turn Direction	Altitude (ft)	Speed (kt/h)	VPA/TCH	Navigation Specification
001	IF	INDIN	-		+12.9			+5500			RNP APCH
002	TF	RLI02	-	306 (293.5)	+13.1	5.0	R	+4300			RNP APCH
003	TF	RLF02	-	036 (023.3)	+13.1	5.0		@3000			RNP APCH
004	TF	RLM02	Y	014 (001.2)	+13.1	5.0				3.00°/50	RNP APCH
005	CF	RLT02	-	317 (304.4)	+13.2	7.0	L		-130		RNP APCH
006	TF	EKSAL	-	197 (184.3)	+13.1	11.6	L	4300			RNP APCH
007	HM	EKSAL	Y	126 (113.2)	+13.1		L	4300			RNP APCH

Waypoint coordinates

Waypoint Identifier	Coordinates
EKSAL	653029.86N 0171110.67W
GERDU	652356.97N 0170453.25W
INDIN	652632.57N 0164909.87W
RLI02	652831.56N 0170009.40W
RLF02	653306.11N 0165523.86W
RLM02	653806.68N 0165508.88W
RLT02	654202.62N 0170906.90W

THIS PAGE INTENTIONALLY LEFT BLANK