

embroidered afghan

Simple, easy stitches are embellished with sophisticated embroidery in this elegant throw. Each square is worked separately, making it a great portable project.

By Michele Woodford

what you'll need

YARN

TLC *Essentials*, 6oz/170g balls, each approx 312yd/285m (acrylic)

- 9 balls #2112 Black (A)
- 1 ball #2313 Aran (B)

CROCHET HOOK

- Size H/8 (5mm) crochet hook or any size to obtain correct gauge

NOTIONS

- Yarn needle
- Chalk pencil
- Pins
- Photocopier
- Cardstock or heavy paper
- Craft knife
- Pencil

the yarn



Essentials in Aran

tip

Leave long yarn tails on squares for sewing together.



SKILL LEVEL: easy

finished measurements

Approx 52"/132cm wide x 66"/167.5cm long excluding fringe

gauge

12 dc and 7½ rows = 4"/10 cm square using size H/8 (5mm) crochet hook.

One square is approx 10½"/26.5cm x 11½"/29cm

Remember to check gauge for best results!

how to make a gauge swatch

With A, ch 14

Row 1 Dc in 4th ch from hook and in each ch across - 12 dc (3 sked ch at beginning count as 1 dc).

Row 2 Ch 3 (counts as first dc), turn, dc in each dc across - 12 dc.

Repeat Row 2 six more times for a total of 8 rows. Resulting gauge swatch should be approx 4"/10 cm square. If necessary, adjust hook size to obtain correct gauge.

notes

1 The afghan consists of 25 pattern squares. The squares are crocheted separately and bordered in double crochet filet. After an embroidered design is applied to each square, the squares are sewn together and a striped border is worked on each end of the afghan. Finally, fringe is added.

2 To change color, work last stitch to the point where there are 2 lps on the hook, yarn over with new color to complete stitch.

3 When working striped squares: yarn is first changed to color B; color A strand is dropped but not cut. When the color B row is complete, the work is not turned. Instead, work begins again where the color A strand was dropped. The color A strand is drawn up into the first color B stitch and work proceeds across.

SQUARE 1 (make 8)

With A, ch 33.

Abbreviations used in this pattern

ch	chain	st(s)	stitch(es)
dc	double crochet	sc	single crochet
hdc	half double crochet	sk(ed)	skip(ped)
lp(s)	loop(s)	sl st	slip stitch
		sp(s)	space(s)

special abbreviations

Cl (cluster) yarn over, insert hook in specified stitch, yarn over and draw up lp, yarn over and draw through 2 lps on hook; (yarn over, insert hook in same stitch, yarn over and draw up lp, yarn over and draw through 2 lps on hook) twice, yarn over and draw through all 4 lps on hook.

Row 1 (wrong side) Dc in 4th ch from hook (3 sked ch at beginning count as first dc), dc in next ch and each ch across - 31 dc.

Rows 2 and 3 Ch 3 (counts as first dc here and throughout), turn, dc in each dc across; change to B in last st of Row 3. Drop but do not cut A - 31 dc.

Row 4 Ch 2 (counts as first sc here and throughout), turn, sc in next 7 sts, Cl in next st, sc in remaining sts across. Fasten off B.

Row 5 (right side) Do not turn work; with right side facing draw up lp of A in first st, ch 2 (counts as first hdc here and throughout), hdc in each st across.

Row 6 Ch 3, turn, dc in each dc across; change to B in last st. Drop but do not cut A.

Row 7 Ch 2, turn, sc in next 25 sts, Cl in next st, sc in remaining sts across. Fasten off B.

Row 8 (right side) Repeat Row 5.

Rows 9-13 Ch 3, turn, dc in each dc across; change to B in last st of Row 13. Drop but do not cut A.

Row 14 Ch 2, turn, sc in each sc across. Fasten off B.

Row 15 (right side) Repeat Row 5.

Rows 16-20 Ch 3, turn, dc in each dc across; change to B in last st of Row 20. Drop but do not cut A.

Row 21 Ch 2, turn, sc in next 20 sts, Cl in next st, sc



embroidered throw



in remaining sts across. Fasten off B.

Row 22 (right side) Repeat Row 5.

Rows 23-25 Ch 3, turn, dc in each dc across.

Do not fasten off and do not turn.

Round 1 (border) Ch 7 (counts as dc, ch 4), dc in base of ch-7 (corner made); pivot work to work along side of square, work (ch 1, dc) 15 times evenly spaced along side of square; ch 4, dc in same sp as last dc worked (corner made); pivot work to work along opposite side of beginning ch, work (ch 1, dc) 21 times evenly spaced along bottom of square; ch 4, dc in same ch as last dc worked (corner made); pivot work to work along side of square, work (ch 1, dc) 15 times evenly spaced along side of square; ch 4, dc in same sp as last dc worked (corner made); pivot work to work along top of square, work (ch 1, dc) 20 times evenly spaced along top of square, ch 1; join with sl st in 3rd ch of beg ch-7. Fasten off, leaving a long yarn tail for sewing.

SQUARE 2 (make 13)

With A, ch 33.

Row 1 (right side) Dc in 4th ch from hook (3 sked ch at beginning count as first dc), dc in next ch and each ch across – 31 dc.

Rows 2-21 Ch 3 (counts as first dc here and throughout), turn, dc in each dc across – 31 dc.

Do not fasten off and do not turn.

Round 1 (border) Work as for Square 1 border.

SQUARE 3 (make 2)

With A, ch 33.

Row 1 (right side) Dc in 4th ch from hook (3 sked ch at beginning count as first dc), dc in next ch and each ch across – 31 dc.

Rows 2-5 Ch 3 (counts as first dc here and throughout), turn, dc in each dc across – 31 dc.

Row 6 Ch 3, turn, dc in each dc across; change to B in last st. Drop but do not cut A.

Row 7 Ch 2 (counts as first sc here and throughout), turn, sc in next 18 sts, Cl in next st, sc in remaining sts across. Fasten off B.

Row 8 Do not turn work; with right side facing draw up lp of A in first st, ch 2 (counts as first hdc here and throughout), hdc in each st across.

Rows 9-21 Ch 3, turn, dc in each dc across.

Do not fasten off and do not turn.

Round 1 (border) Work as for Square 1 border.

SQUARE 4 (make 2)

With A, ch 33.

Rows 1-11 Work Rows 1-11 of Square 3; change to B in last st of Row 11. Drop but do not cut A.

Row 12 Ch 2 (counts as first sc), turn, sc in next 7 sts, Cl in next st, sc in remaining sts across. Fasten off B.

Row 13 Do not turn work; with right side facing draw up lp of A in first st, ch 2 (counts as first hdc), hdc in next st and each st across – 32 hdc.

Rows 14-21 Ch 3, turn, dc in each dc across.

Do not fasten off and do not turn.

Round 1 (border) Work as for Square 1 border.

embroidery (see templates)

Using a photocopier, enlarge templates to the following dimensions:

Large flower: 10" x 9"/25.4 x 23cm

Small flower: 5" x 8"/12.7 x 20.3cm

Leaf: 9" x 8"/23 x 20.3cm

Trace onto cardstock or heavy paper. Use craft knife to carefully cut out lines. Pin templates over appropriate squares and use chalk pencil to mark embroidery placement.

Mark and embroider four 2 squares with floral template.

Mark and embroider two 3 squares with flower dot template.

Mark and embroider two 4 squares with leaf template.

(1 squares and nine 2 squares are not embroidered).

Embroider designs on squares following chalk lines and using indicated stitches as follows:

Surface sl st (surface slip stitch)

See photo. Make a slip knot and hold it on wrong side of fabric. Insert hook from right side of fabric to wrong side. Place slip knot on hook, draw lp to right side. Insert hook from right side to wrong side through desired stitch or space, yarn over, draw lp to right side and through lp on hook (surface slip stitch made).

French knot

See photo. Thread yarn on yarn needle, insert needle from wrong side to right side of fabric, and draw yarn through. Wrap yarn around the needle 2-3 times, and push needle back down from right side to

wrong side near the point where it came up.

straight stitch

Thread yarn on yarn needle, insert needle from wrong side to right side of fabric at desired beginning point of stitch. Insert needle back into fabric at desired end point of stitch. Repeat as desired.

blanket stitch

See photo. Bring needle up at point A, down at point B, and up at point C, directing needle over yarn when coming up at point C. Repeat, with point C becoming point A for each new stitch.

daisy stitch

Thread yarn onto yarn needle. Bring needle up at planned center of daisy, then back down again just next to the same point. Before drawing lp snug, bring needle up at end point of one petal and make a small stitch over the yarn lp, then pull all snug. (End of petal will be tacked down by small stitch). Repeat to make five petals, starting each at the same center point. Finish by making one French knot in center of flower.

finishing

Lay out squares as shown in diagram. Thread long A tails onto yarn needle and sew edges of squares together. Weave in all ends.

STRIPE BORDER (work on 2 opposite ends of afghan)

With right side facing, join A in 2nd ch of upper right corner ch-4.

Row 1 (right side) Ch 3 (counts as first dc here and throughout), work 2 dc in each ch-sp across square, *work 1 dc in join between squares, work 2 dc in each ch-sp across next square; repeat from * across, dc in 2nd ch of upper left corner ch-4 - 176 dc.

Row 2 Ch 3, turn, dc in each dc across; change to B in last st. Drop but do not fasten off A.

Row 3 Ch 2 (counts as first sc here and throughout), turn, sc in next 24 sts, Cl in next st, sc in next 65 sts, Cl in next st, sc in each remaining st across. Fasten off B.

Row 4 (right side) Do not turn work; with right side facing draw up loop of A in first st, ch 3 (counts as first dc here and throughout), dc in

2 lg. flower	1	2 solid	1	2 lg. flower
1	2 solid	4 leaf	2 solid	1
2 solid	3 sm. flower	2 solid	3 sm. flower	2 solid
1	2 solid	4 leaf	2 solid	1
2 lg. flower	1	2 solid	1	2 lg. flower

each st across; change to B in last st. Drop but do not fasten off A.

Row 5 Ch 2, sc in each st across. Fasten off B.

Row 6 (right side) Do not turn work; with right side facing draw up loop of A in first st, ch 3 (counts as first dc here and throughout), dc in each st across.

Rows 7-8 Ch 3, turn, dc in each st across; change to B in last st. Drop but do not fasten off A.

Row 9 Ch 2, turn, sc in next 83 sts, Cl in next st, sc in next 65 sts, Cl in next st, sc in each remaining st across. Fasten off B.

Row 10 (right side) Do not turn work; with right side facing draw up loop of A in first st, ch 3 (counts as first dc here and throughout), dc in each st across.

Row 11 Ch 3, turn, sc in next sc, *ch 3, sk 1 sts, sc in next st; repeat from * across - 88 ch-3 sps. Fasten off.

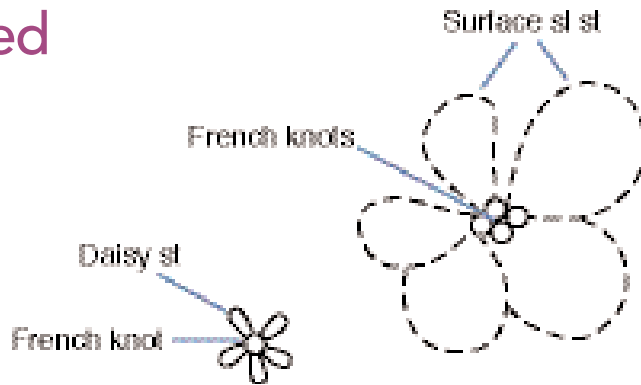
FRINGE

(work along both striped ends)

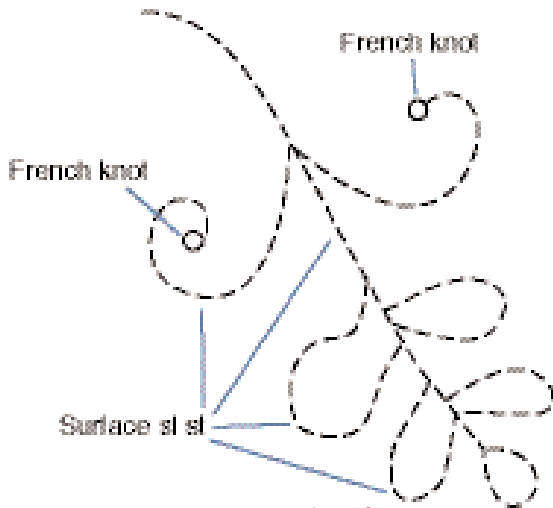
Cut sixty 10"/25.5cm strands each of A and B. Holding 2 strands of A and 2 strands of B together, fold in half and draw loop through first ch-3 sp of Row 11, draw ends through loop and pull tight. Repeat in every third ch-3 sp across; for a total of 30 fringes. Trim fringe evenly.

Repeat Rows 1 through 11 and fringe on opposite end of afghan. n

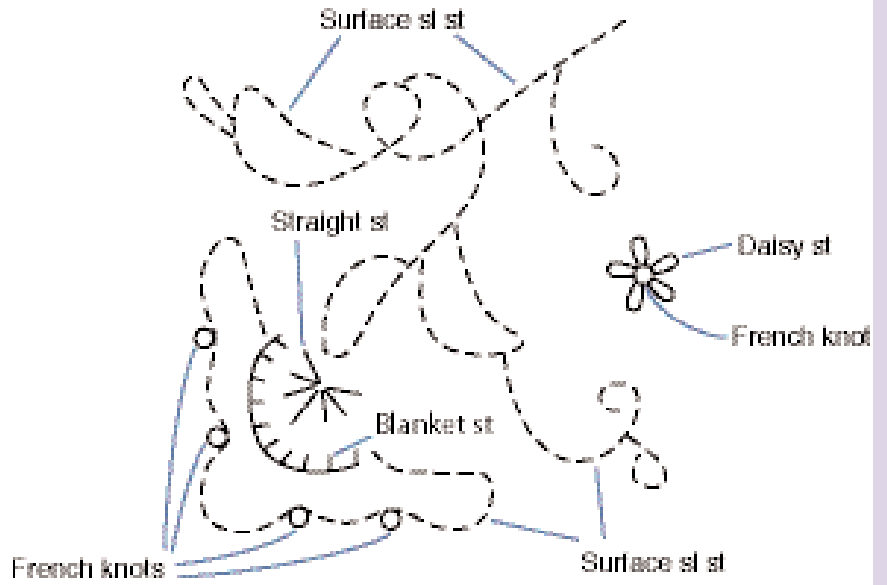
embroidered throw



sm. flower template

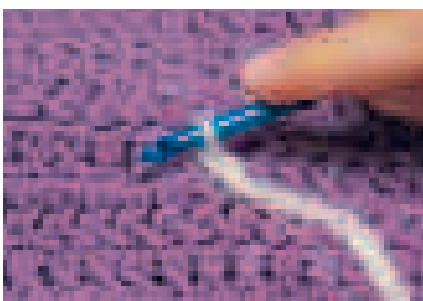
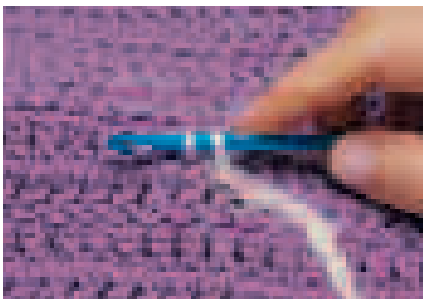


leaf
template

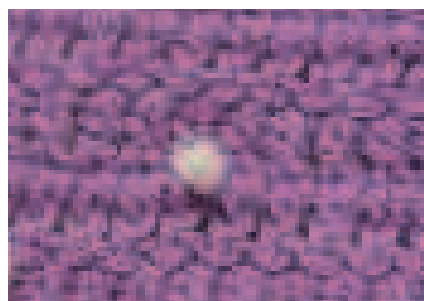
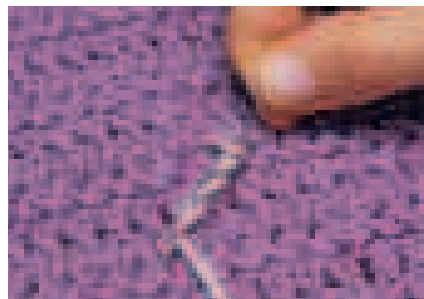


lg. flower template

surface slip stitch



French knot



blanket stitch

