

Regional Rail Capital Funding Plan for FY 2012-13

Metro Board Planning & Programming Committee
July 18, 2012



Metro

Approve the Regional Rail Capital Funding Plan

San Bernardino Line Strategic Study	\$ 1,000,000
Los Angeles Union Station Run-Through Tracks	\$ 4,000,000
Project Study Reports	\$ 2,000,000
L.A. County Grade Crossing Safety Program	\$ 2,000,000
L.A. County Grade Separation Priority Program	\$ 500,000
L.A. County Station Needs Assessment	\$ 500,000
CP Brighton to CP Roxford Double Track Engineering and Environmental	\$ 3,000,000
Hollywood Way Station - Antelope Valley Line	\$ 2,000,000
Lancaster Station	\$ 3,000,000
Total	\$ 18,000,000

Background

- Measure R 3% funds are allocated for commuter rail in L.A. County.
- The Board Recommended Antelope Valley Line Strategic Study identified needs for regional rail.
- In March the Board approved a Motion to develop specific projects and programs within L.A. County.

Projects and Programs

- Nine projects and programs are being advanced
- These projects address the following
 - Grade Crossing Safety on Metro owned right-of-way.
 - Capacity improvements that will benefit the passengers and communities along the right-of-way.
- Advancing these projects will:
 - Provide for funding from the high speed rail MOU.
 - Develop programs that are more attractive for other sources of funding.
 - Provide significant benefits to rail passengers throughout L.A. County.



Safety Related Programs and Projects

Los Angeles County Grade Crossing Safety

- Examine 170 at-grade crossings of Metro owned right-of-way.
- Develop an overall strategy to corridor solutions.
- Will reach out to the community to identify potential quiet zones.
- Establish funding strategies to address crossing issues.
- Multi-Phase program that will extend over several years.

Grade Separation Prioritization

- Examine 170 at-grade crossings of Metro owned right-of-way.
- Apply the following basic metrics:
 - CPUC Section 190 Formula
 - Community features
 - Broken gates and close calls.
- Will identify problem crossings and work with the communities to develop funding strategy.

Project Study Reports

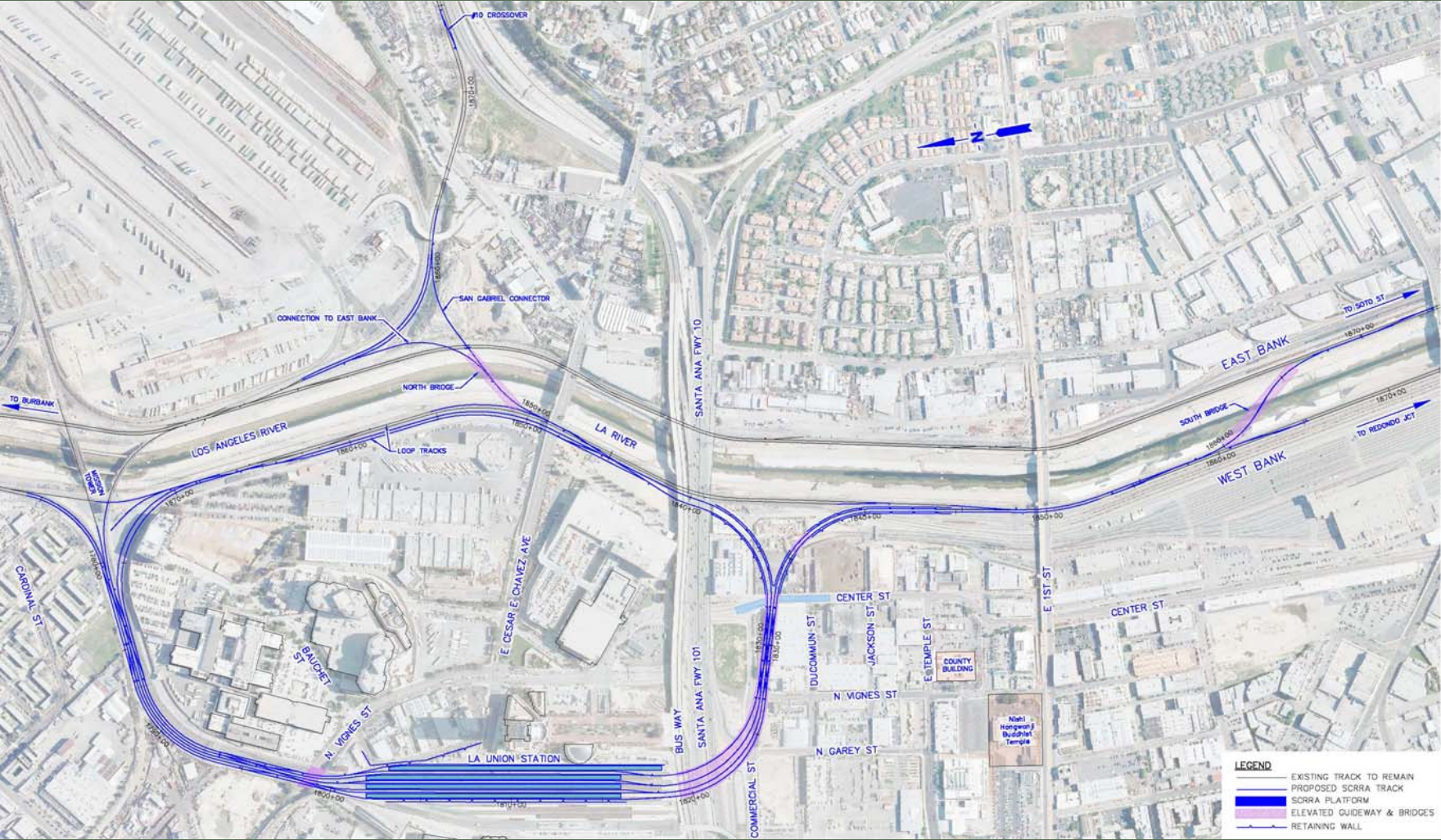
- The Grade Separation Priority Program will identify problem crossings.
- Early development of Project Study Reports will provide assistance to seek additional funding.
- It is assumed that four Project Study Reports are budgeted.

Capacity Related Programs and Projects

Los Angeles Unions Station Run-Through Tracks

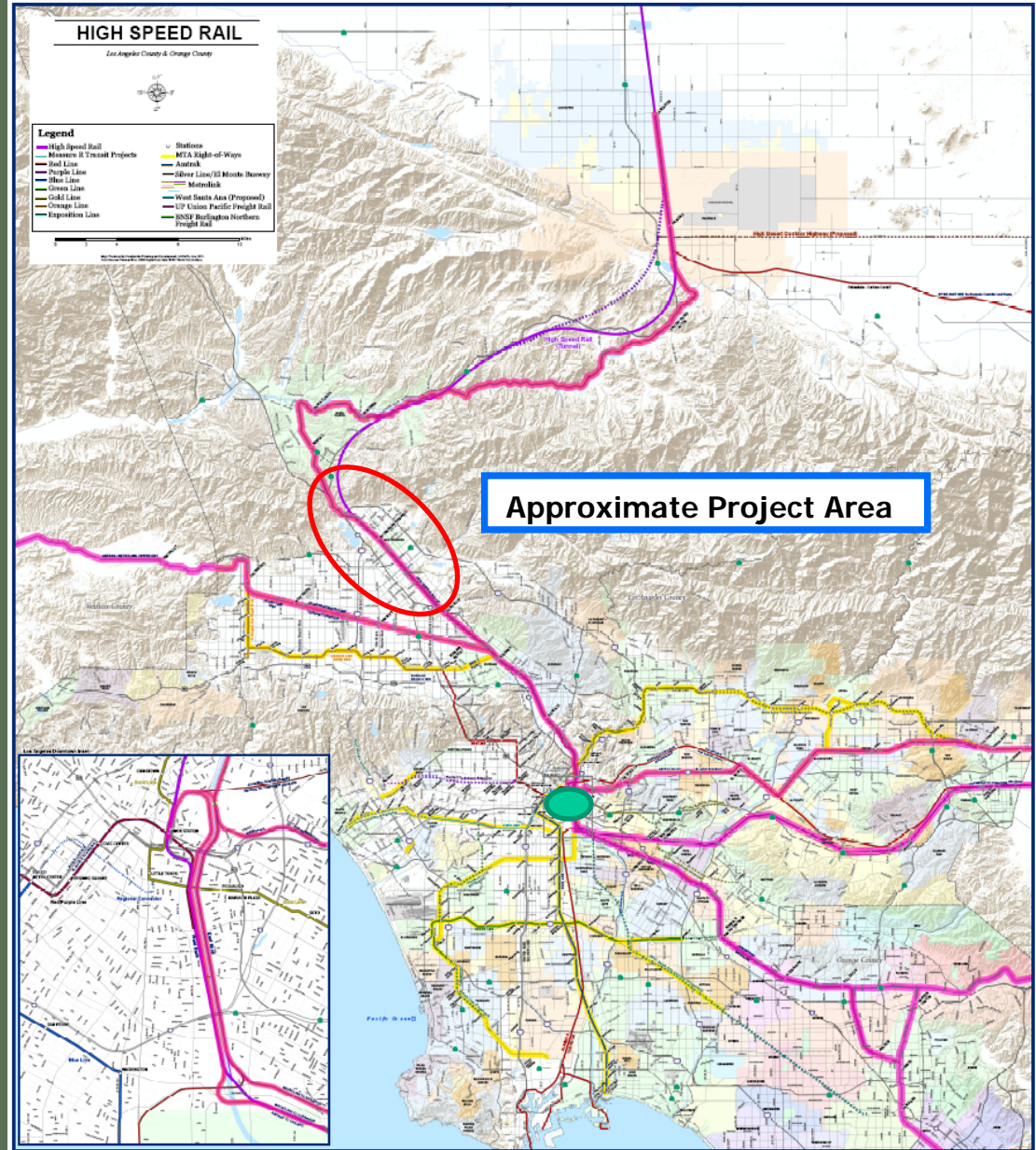
- Project was environmentally cleared in 2004.
- New requirements will require significant work to update the document.
- Will increase the capacity of the station 40%.
- The project will support future Amtrak and Metrolink service.
- Important for transportation in southern California and regionally supported.

Los Angeles Unions Station Run-Through Tracks



CP Brighton to CP Roxford Double Track

- Identified in AVL study as a significant constraint.
- Will address grade crossing safety issues in the corridor.
- Will facilitate HSR.



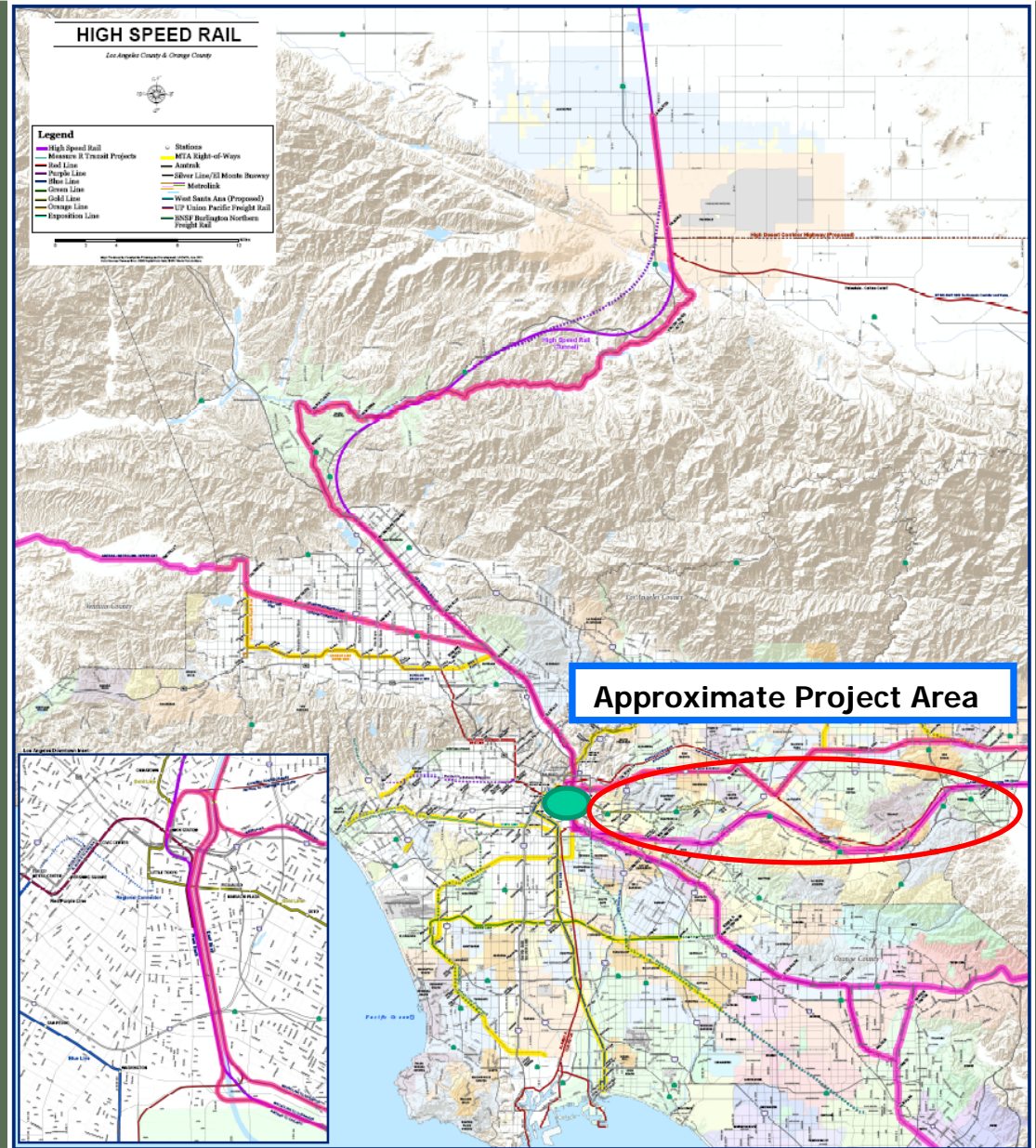
Bob Hope Airport Station at Hollywood Way

- Provides an important regional link.
- Closely linked to their Ground Access Study.
- Bob Hope Airport providing \$1.75M.



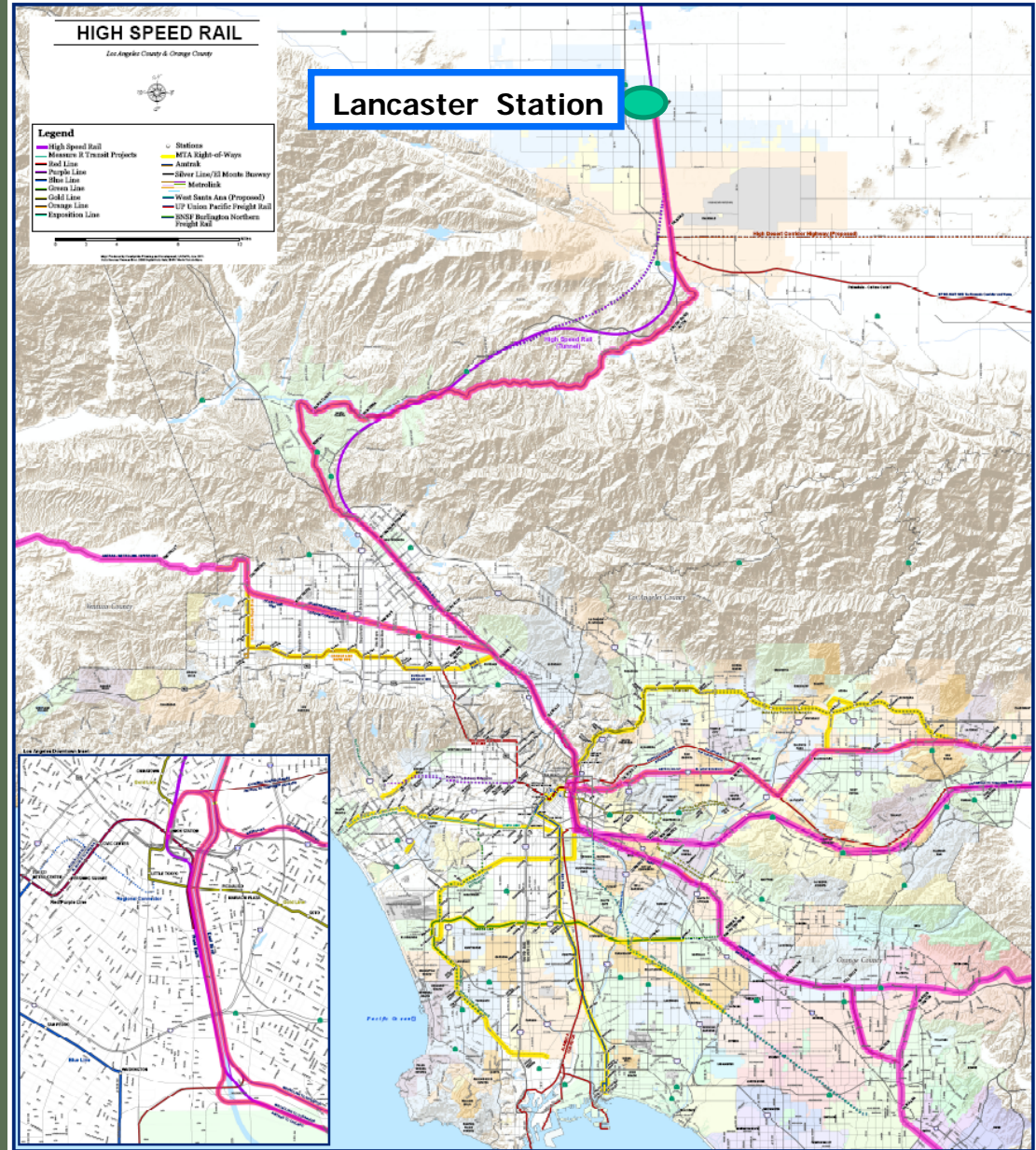
San Bernardino Line Strategic Study

- Highest ridership Metrolink line.
- L.A. Metro and SANBAG will partner on the study.
- Authorized with previous Board Action.



Lancaster Station

- Allows additional capacity for service.
- Will allow for additional operational flexibility
- Provides regional benefit.



Station Needs Assessment

- Many L.A. County Stations have not been upgraded for 20 years.
- Project will examine the following at 25 stations:
 - Safety
 - Wayfinding
 - Signage
 - Connectivity
 - Accessibility
 - Station Amenities
- Information will be provided to the cities for their use.

Conclusion

- This program implements Metro Board actions over the past year.
- Advancing these projects will provide regional benefit.
- The work will make these more competitive for additional funding.

Questions?