

GONZAGA



BULLDOGS



2012-13 WOMEN'S BASKETBALL



GOZAGS.COM |   @ZAGWBB | TICKETS: 509.313.6000 | GOZAGS.COM/TICKETS

TABLE OF CONTENTS

Head Coach Kelly Graves.....	2-3	Top Attendance/Overtime Games	24
Assistant Coaches.....	4-5	1,000-Point Club.....	25
Chelsea Waters.....	6	Game Records.....	26
Haiden Palmer	7	Season/Career Records.....	27
Maiki Viela	8	Team Records.....	28
Danielle Walter	9	West Coast Conference Accolades.....	29
Taelor Karr	10-11	All-Time Roster	30
Michaela O'Rourke.....	12	Results When Nationally Ranked.....	31
Sunny Greinacher.....	13	Bulldogs In The Post Season	32
Meghan Winters	14	NCAA Tournament Box Scores	33-36
Shaniqua Nilles	15	Post-Season Statistics.....	37
Kiara Kudron	16	All-Time Series	38-41
Keani Albanez.....	17	Year-by-Year Results.....	42-46
Stephanie Golden	18	West Coast Conference Tournament Statistics.....	47
Elle Tinkle	19	West Coast Conference Tournament Results.....	48
Lindsay Sherbert.....	20	NCAA Tournament Recaps	49-53
Jazmine Redmon	21	WNIT Appearances	54
Shelby Cheslek	22	Individual Bulldog Success.....	55
Support Staff.....	23	USA Women's National Team.....	56
		USA World University Team	57
		USA Pan American Games.....	58
		USA Basketball U18 Team	59
		Canadian National Team.....	60
		Playing Professionally	61-63
		TV Spotter	64



HEAD COACH KELLY GRAVES

Kelly Graves has turned Gonzaga University women's basketball into one of the elite programs in the nation in his 12 years at the helm. The winningest coach in Bulldog history led GU to their unprecedented eighth-straight West Coast Conference Championship and fifth NCAA Tournament appearance in the last six years in 2011-12.

Graves guided the Zags to a 14-2 mark in league action in 2011-12 after back-to-back perfect 14-0 seasons. Despite having their 40-game WCC unbeaten streak broken – which included both regular season and tournament play and spanned parts of four seasons – the Bulldogs found themselves as a No. 11 seed in the NCAA Tournament after earning the school's first at-large bid. Gonzaga reached the Sweet Sixteen for the third-straight season after upsetting both No. 6 Rutgers and No. 3 Miami. GU's season came to an end against No. 2 seed Kentucky.

The Bulldogs closed out the year at 28-6 – their sixth-straight 20-win season; and earned a final ranking of No. 19 in the USA Today/ESPN Coaches' Top 25 poll. Gonzaga also jumped from No. 25 in the nation to No. 14 in the nation in attendance, averaging 5,443 fans per home game.

With Graves as head coach, the Zags are now 8-5 in NCAA Tournament play.

The 49-year old now owns a 326-151 career record that also includes a three year stint at Saint Mary's College. At Gonzaga, Graves is 260-125 overall and 124-44 in West Coast Conference.

Dating back to his years as an assistant coach at the University of Portland, Graves has now coached 32 All-West Coast Conference performers, seven WCC Players of the Year, six All-Americans, two WCC Defender's of the Year, four WCC New-comer's of the Year and 25 WCC All-Tournament selections. He also has coached two players who were selected in the WNBA Draft, including the 2011 No. 3 overall pick Courtney Vandersloot.

The 2010-11 season is probably the pinnacle of his career thus far and won't be forgotten anytime soon. The Bulldogs became the Cinderella story of the NCAA Tournament. The No. 11 seed bulldozed their way to their inaugural Elite Eight appearance by defeating a Big 10 Conference member, a Pacific-10 Conference member and Big East Conference member. The Zags defeated No. 6 seed University of Iowa; No. 3 seed UCLA and No. 10 seed University of Louisville before falling to No. 1 seed Stanford University.



THE GRAVES FILE

BIRTHPLACE: Salt Lake City, Utah
HIGH SCHOOL: Dixie High,
 Saint George, Utah - 1981
COLLEGE: Ricks College, Rexburg, Idaho - 1986
 University of New Mexico - 1988
 (B.S. Communications)

COLLEGIATE HONORS

Two-time All-Scenic West First-Team, 1985-86
 Western Athletic Conference All-Academic, 1987

COACHING EXPERIENCE

1989 - Men's Graduate Assistant
University of New Mexico
 1990-92 - Head Women's Coach
Big Bend Community College
 1993-97 - Assistant Women's Coach
University of Portland
 1998-00 - Head Women's Coach
Saint Mary's College
 APRIL 11, 2000 - Head Women's Coach
Gonzaga University

WIFE: Mary (Winter) Graves
CHILDREN: Maxwell Joseph (1995)
 Jackson Obde (1997)
 William Kelly (2000)

GRAVES TIMELINE

April 11, 2000 - Named Gonzaga's head coach
 Nov. 18, 2000 - Wins first game of Zag tenure
 2003 - Wins nine WCC games
 2004 - 10 WCC wins - Most wins since 1995
 2004 - WCC Tournament Runner-up
 2004 - Earned bid to the WNIT
 2005 - Wins a then-school record 28 games
 2007 - Earned first bid to NCAA Tournament
 2008 - Earned bid to WNIT
 2009 - Wins first NCAA Tournament game
 2010 - Wins sixth-straight WCC Championship
 2010 - Earned first trip to NCAA Sweet Sixteen
 2011 - Wins seventh-straight WCC Championship
 2011 - Earned first trip to NCAA Elite Eight
 2012 - Went to third-straight NCAA Sweet Sixteen

HEAD COACH KELLY GRAVES CONT.

Gonzaga closed the season with a school record 31 wins. After starting the season 2-3, the Bulldogs went 29-2, including a 21-game winning streak that ended in the Elite Eight. The Zags were rewarded for their spectacular season, ending the year ranked a school-high eighth.

The recent success isn't a surprise for many as the Zag had slowly been making a name for themselves nationally. Gonzaga won its first-ever NCAA Tournament game in 2008-09 and found its way in its inaugural Sweet Sixteen game in 2009-10. The Bulldogs first appearance in the NCAA Tournament was in 2006-07.

No stranger to the area, Graves started his coaching career in nearby Moses Lake as the head coach of Big Bend Community College. In three seasons at the school, Graves turned a struggling program with four wins his first season into a Northwest Athletic Association of Community Colleges power his last season with 23 wins.

From Big Bend, Graves earned his first taste of West Coast Conference basketball as an assistant at the University of Portland under head coach Jim Sollars. During his tenure at Portland, Graves recruited many of the players that helped the Pilots post a 102-46 record and 51-19 WCC mark in five seasons. The Pilots made four straight NCAA Tournament appearances from 1994-97 and boasted three straight WCC Players of the Year from 1995-97.

In 1998 Graves moved south in the WCC to guide the program at Saint Mary's College. He made an immediate impact with the Gaels, producing a 66-26 record in three seasons with WCC Tournament championship game appearances his first two seasons. In his first season at the helm he guided SMC to a 20-9 record, the first 20-win season at the school since the 1990-91 season.

Graves followed up that success with a 26-7 mark and two firsts for the Gaels program. The first-ever WCC Tournament championship and first-ever NCAA Tournament berth, a 61-57 setback to Notre Dame. His final Saint Mary's squad finished with a 20-10 mark that included a first-round WNIT victory over Hawai'i and a second-round loss to Long Beach State.

Graves is an active member of the WBCA (Women's Basketball Coaches Association) and currently sits on the Board of Directors.

This past summer, Graves added USA Basketball to his resume, becoming an assistant coach with the U18 women's basketball squad and helping the team to a gold medal at the 2012 FIBA Americas.

KELLY GRAVES COLLEGIATE COACHING RECORD

Year	School	Rec.	Pct.	Conf.	Pct.	Conf. Fin.	Other
1989-90	Big Bend CC	4-22	.154	2-10	.167	6th	-----
1990-91	Big Bend CC	18-8	.692	5-7	.417	5th	-----
1991-92	Big Bend CC	23-10	.670	9-3	.750	2nd	District Championship
1997-98	Saint Mary's College	20-9	.690	9-5	.643	T 3rd	WCC Tourney Runner-Up
1998-99	Saint Mary's College	26-7	.788	10-4	.714	3rd	NCAA First Round
1999-00	Saint Mary's College	20-10	.667	11-3	.786	2nd	WNIT Second Round
2000-01	Gonzaga University	5-23	.178	0-14	.000	8th	-----
2001-02	Gonzaga University	11-18	.379	2-12	.143	8th	-----
2002-03	Gonzaga University	18-12	.600	9-5	.642	T 2nd	WCC Tourney Semifinals
2003-04	Gonzaga University	18-12	.600	10-4	.714	T 2nd	WNIT First Round
2004-05	Gonzaga University	28-4	.875	14-0	1.000	1st	WNIT Second Round
2005-06	Gonzaga University	16-14	.533	11-3	.785	T 1st	WCC Regular-Season Champs
2006-07	Gonzaga University	24-10	.706	13-1	.929	1st	NCAA First Round
2007-08	Gonzaga University	25-9	.735	13-1	.929	1st	WNIT Second Round
2008-09	Gonzaga University	27-7	.794	12-2	.857	1st	NCAA Second Round
2009-10	Gonzaga University	29-5	.853	14-0	1.000	1st	NCAA Sweet Sixteen
2010-11	Gonzaga University	31-5	.861	14-0	1.000	1st	NCAA Elite Eight
2011-12	Gonzaga University	28-6	.824	14-2	.874	1st	NCAA Sweet Sixteen
Totals	15 Years (Division I)	326-151	.683	156-56	.736	----	10 Post-Season Berths
Gonzaga	12 Years	260-125	.675	126-44	.741	----	5 NCAA Appearances 3 WNIT Appearances

ASSISTANT COACH JODIE KACZOR BERRY

In the nine-years Kaczor Berry has been sitting on the bench at Gonzaga the Bulldogs have put together an impressive 226-72 overall record, a 115-13 mark in the West Coast Conference, won eight-straight West Coast Conference regular-season championships and made the post-season eight times, including five NCAA Tournament appearances.

Kaczor Berry has helped coach four All-Americans, 10 All-League performers and three WNBA draft picks, including the 2011 No. 3 pick Courtney Vandersloot; who she convinced on the recruiting trail to play at GU.

Kaczor Berry brings a solid basketball background to GU after earning four varsity letters at Western Washington University. She finished her career as WWU's career leader in three-pointers (210) and free throw percentage (81.9) and earned All-Great Northwest Athletic Conference honors in 2001 and 2002.

Western Washington posted a 95-24 record during Kaczor Berry's four-year career and four trips to the NCAA Division II Tournament with a final four appearance in 2000.

Kaczor Berry was married to Eric Berry in July 2005 and they welcomed their son Tyson in 2010.



ASSISTANT COACH LISA MISPLEY FORTIER

Lisa Misphey Fortier enters her sixth year as an assistant coach on the Bulldogs staff in 2012-13 and eighth year overall. Misphey Fortier served as the coordinator of basketball operations at Gonzaga for two seasons from 2004-06. She returned to Gonzaga after a season as an assistant coach at the University of Northern Colorado; members of the Big Sky Conference.

In the five years Misphey Fortier has been an assistant coach the Zags have put together 140-32 overall record, a 67-5 mark in the West Coast Conference, won five-straight West Coast Conference regular-season championships and made the post-season each year, including four NCAA Tournament appearances.

Misphey Fortier played collegiate basketball at both Cal State Monterey Bay and Butte (Calif.) Community College. At CSUMB, she earned honorable mention All Cal-Pac Conference honors as a junior and was an NAIA Academic All-American in 2003. Misphey Fortier was named the 2004 CSUMB Female Scholar Athlete of the Year.

She graduated Magna Cum Laude from CSUMB in 2004 with a bachelor's degree in human communications. Misphey Fortier earned her Master's degree in Sport and Athletic Administration from Gonzaga in 2004.

Misphey Fortier is married to Craig Fortier, an assistant men's basketball coach at Eastern Washington University. They welcomed their first son Marcus in 2010. Their second son Calvin was born in 2012.

Misphey Fortier is currently the Assistant Coaches Representative on the WBCA Board of Directors.



ASSISTANT COACH JULIE SHAW

Julie Shaw completed her first season as an assistant coach with Gonzaga University in 2011-12. In her first season, the Bulldogs won their eighth-straight West Coast Conference regular season title and made it to the NCAA Tournament Sweet Sixteen.

Shaw came to Gonzaga from Cal Poly San Luis Obispo where she was an assistant coach for six years. At Cal Poly, she worked mainly with the post players and served as the travel coordinator, assisted in the organization of the program's community outreach endeavors and acted as a link between the Mustang players and the academic services department.

Cal Poly, members of the Big West Conference, went 97-82 during Shaw's six years, including 58-34 in the Big West. This past season the Mustangs went 18-13 overall and were co-regular season champions of the Big West with a 12-4 mark. After falling in the Big West Conference Tournament Championship to UC Davis, the Mustangs earned a bid to the Women's National Invitational Tournament (WNIT); the program's first post-season appearance.

Shaw arrived in San Luis Obispo after serving as a graduate assistant coach with the University of Redlands during the 2004-05 campaign. Prior to her time at Redlands, she served as an assistant coach at Vista del Lago High School in Moreno Valley, Calif.

Shaw was a four-year letterwinner at UC Riverside. She departed UC Riverside ranked second all-time in appearances (110) and free throw attempts (366), third in rebounds (792), fourth in scoring (1,303) and sixth in field goals (469).

During her tenure at UC Riverside, Shaw (1998-2002) was a 2001-02 All-Big West Conference honorable mention selection and a member of the 2002 Big West All-Tournament Team. Academically, Shaw was recognized as a Big West Scholar-Athlete as a senior.



DIRECTOR OF OPERATIONS MICHELLE CLARK

Michelle Clark is in her fifth year as a member of the Gonzaga University women's basketball staff. After three years as an assistant coach, Clark begins her second year as the director of operations in 2012-13. Clark is no stranger to the Bulldogs program having been a two-year player from 2007-08.

As a player, Clark joined the Bulldogs for the 2006-07 season from Columbia Basin College in her hometown of Pasco, Wash., after two seasons at San Diego State University. She eclipsed the 1,000 point plateau for her career, amassing 1,215 points.

At Gonzaga, Clark scored 626 points, brought down 222 rebounds, dished out 126 assists and made 53 steals. She closed out her Zag career draining 103 three-pointers to stand seventh on the GU career record book for three-pointers made. Clark also hit nine three-pointers in a single contest during her senior season to break a 14-year-old Bulldog record held by Ivy Safranski.

Clark was a two-time West Coast Conference winter all-academic honoree and was named the Most Inspirational Player by her teammates both years with Gonzaga.

The former Michelle Elliott married Peter Clark in the summer of 2011.





1 CHELSEA WATERS

Guard/Forward • 6-1 • Freshman • Lewiston, ID

HIGH SCHOOL

As a freshman and sophomore, attended Moscow high school... at Moscow she earned 4A All-Inland Empire honors both seasons and as a sophomore led the team to the 4A Inland

Empire League Championship and 4A Inland League Empire Regional Championship...in first season at Lewiston high school, she averaged 8.4 points, 7.8 rebounds, 2.8 assists and 1.7 steals per game and led the Bengals to a 23-4 overall mark and to the 5A State Championship...for her efforts as a junior, was named 5A All-Inland Empire and 5A All-State...Lewiston was also named the 2010-11 North Idaho High School Team of the Year...named the 2010-11 Female Athlete of the Year at Lewiston...earned 5A All-Inland Empire second team and 5A All-State senior season after helping Lewiston to a 22-4 record and their second-straight Class 5A title...ranked as high as 22nd by ESPN HoopGurlz for a wing players...was also a four-year letterwinner of the volleyball squad...as a senior volleyball player, earned 5A All-Inland Empire honors, was the Bengal Offensive Player of the Year and a District II All-Star.

MISC.

3.33 high school GPA...father Frank Waters played basketball at the University of Idaho...brother Maurice Waters was a member of the track and field team at Idaho.





3 HAIDEN PALMER

Guard • 5-8 • Junior • Moreno Valley, CA

HIGH SCHOOL

Earned all-league honors all four seasons and was team captain for two...earned scholar-athlete honors all four years as well...named Athlete of the Year as a senior...led Vista Del Largo to 25-3 record her senior year...

as a senior, led team with 16.7 points per game and averaged 7.2 rebounds and 3.1 assists...posted 1.1 blocks and 3.1 steals on average... as a junior was named to the Southern California Interscholastic Basketball Coaches Association Division 1-A Second Team...averaged 17.5 points per game as a junior and tallied 97 assists - 4.2 per game - to go along with 106 steals, or an average of 4.6 per contest...ESPN's HoopGurlz.com rated as the nation's No. 72 shooting guard prior to her senior season... also lettered in track and field as a sprinter.

FRESHMAN (2009-10)

Played and started in all 31 games as a freshman on the Oregon State University women's basketball team...averaged 10.8 points per contest; second best on the squad...also averaged 3.5 rebounds, 1.4 steals and 1.3 assists per game...was named to the Pacific-10 Conference All-Freshman team.

RS-SOPHOMORE (2010-11)

Transferred to Gonzaga University in the summer of 2010 and redshirted due to NCAA transfer rules.

SOPHOMORE (2011-12)

Named West Coast Conference Co-Newcomer of the Year... named All-West Coast Conference honorable mention... named to the West Coast Conference All-Tournament Team... named MVP of the Las Vegas Holiday Hoops Classic...named West Coast Conference Player of the Week, Dec. 19...played in all 34 games for Gonzaga, getting the starting nod 29 times... was first on the team in 3-pointers made (52) and steals (78) and third in points (12.4)...in first game in GU uniform, after sitting a year for NCAA transfer rules, started and scored 14 points in 101-88 victory over Hofstra...registered a team-high 13 points in 76-51 setback to then-No. 5 Stanford University Nov. 13...had 14 points, game-high six rebounds, and four assists in win over Idaho, Nov. 17...had a career-high six steals in GU's 99-69 win over Portland State, Nov. 27...scored a then-Gonzaga high 21 points in win over UC Riverside, Dec. 17...scored 22 points, including the game-winning 3-pointer in Zags 71-68 victory over No. 12/13 University of Georgia... finished with 20 points in Bulldogs opening West Coast Conference win over Portland...registered first double-double against San Francisco, Jan. 12 - scored 10 points and grabbed a game-high 10 rebounds...scored a career-high 28 points in GU's setback in the WCC final to BYU, March 5... NCAA Tournament First Round victory over Rutgers, scored 21 points, dished out four assists and had five steals...in NCAA Tournament Second Round win over Miami, scored 15 points, grabbed eight rebounds, had two assists and two blocks... registered double-figure points in 24 of 32 games, including 11 of 16 West Coast Conference games.

MISC.

3.8 high school GPA...member of the National Honor Society and Honor Roll...parents are Deborah and Chris Palmer.

GAME-BY-GAME STATISTICS

2011-12 (Sophomore at Gonzaga)

Opponent	M	Fg-Fga	3m-3a	Ft-Fta	O-D-Reb	PF	A	TO	B	S	Pts
HOFSTRA	22	6-12	0-1	2-4	0-2-2	5	3	1	0	4	14
at Stanford	30	4-11	1-2	4-6	0-3-3	4	2	0	0	3	13
at Idaho	20	5-11	4-8	0-0	1-5-6	3	4	4	0	1	14
PORTLAND STATE	23	3-10	0-3	0-0	3-3-6	1	1	1	1	6	6
at Washington State	36	4-9	0-1	1-4	2-3-5	3	2	1	0	2	9
at Cal State Fullerton	28	4-10	0-0	2-2	1-2-3	0	2	3	1	3	9
USC	27	5-13	3-6	0-0	2-3-5	2	0	1	1	3	13
EASTERN WASHINGTON	23	3-9	3-5	2-4	4-2-6	1	1	0	0	2	11
MONTANA	28	6-12	2-5	0-0	2-2-4	0	3	4	0	3	14
UC RIVERSIDE	28	9-13	3-5	0-1	2-4-6	0	2	3	2	2	21
vs GEORGIA	26	9-17	3-7	1-1	2-2-4	2	1	2	0	2	22
vs DAYTON	31	3-13	0-4	5-7	6-1-7	3	3	3	0	2	11
at Portland	31	8-13	2-6	2-2	3-4-7	2	5	5	2	3	20
SAINT FRANCIS	16	1-5	1-3	0-0	1-3-4	4	6	1	0	0	3
at Pepperdine	23	5-9	1-3	0-0	0-1-1	2	2	5	0	0	11
at Loyola Marymount	28	3-6	2-4	0-0	3-3-6	2	5	1	1	3	8
SAN FRANCISCO	26	4-11	2-6	0-0	1-9-10	0	2	0	1	3	10
SAINT MARY'S	32	4-12	2-4	2-2	1-2-3	1	1	1	0	0	12
at Santa Clara	28	6-14	2-5	1-4	3-6-9	1	2	1	1	0	15
at San Diego	34	5-15	1-6	0-0	5-1-6	3	2	5	0	1	11
LOYOLA MARYMOUNT	29	6-11	2-3	0-0	1-2-3	0	2	0	0	2	14
at Saint Mary's	31	6-19	3-8	1-1	3-3-6	1	3	0	0	3	16
PORTLAND	26	5-11	0-4	0-0	2-2-4	1	1	3	1	2	10
SAN DIEGO	27	6-16	1-5	1-2	0-1-1	3	0	2	0	2	14
at Brigham Young	21	2-12	0-2	0-0	0-0-0	4	0	0	0	2	4
at San Francisco	19	3-11	1-3	2-2	4-2-6	2	1	3	0	1	9
SANTA CLARA	23	3-11	1-3	0-0	2-2-4	1	2	1	0	5	7
PEPPERDINE	32	6-21	1-7	2-2	4-0-4	2	1	3	0	2	15
BYU	26	1-8	0-3	2-4	0-2-2	3	1	1	0	3	4
vs Saint Mary's	33	6-14	2-4	0-0	1-2-3	2	0	0	0	5	14
vs BYU	37	12-17	4-6	0-2	5-0-5	2	2	2	0	2	28
RUTGERS	32	7-16	3-10	4-6	2-1-3	4	4	2	0	5	21
MIAMI	37	5-13	2-6	3-4	4-4-8	1	2	3	2	0	15
vs Kentucky	26	2-8	0-2	0-0	1-0-1	5	0	2	0	1	4

2009-10 (Freshman at Oregon State)

Opponent	M	Fg-Fga	3m-3a	Ft-Fta	O-D-Reb	PF	A	TO	B	S	Pts
CAL POLY	27	3-5	0-1	2-4	3-1-4	1	2	1	0	0	8
at Houston	26	1-9	0-1	0-2	2-4-6	1	0	4	0	4	2
at Houston Baptist	13	2-7	0-1	2-2	1-0-1	0	0	3	0	0	6
vs Belmont	18	2-8	0-2	1-2	2-2-4	1	4	2	0	0	5
at Northern Arizona	27	6-8	1-1	5-6	4-2-6	3	1	3	0	3	18
UC SANTA BARBARA	20	2-4	2-2	1-2	0-0-0	2	1	4	0	0	7
WEBER STATE	32	5-14	0-1	5-6	2-1-3	1	2	2	0	5	15
UC IRVINE	27	3-9	1-2	1-4	2-1-3	2	0	1	1	2	8
SEATTLE	19	4-11	1-4	0-0	1-1-2	2	0	1	0	2	9
at Portland State	31	5-12	0-3	2-3	2-4-6	3	1	1	2	1	12
WASHINGTON STATE	31	9-18	0-1	1-2	2-8-10	2	4	5	0	3	19
WASHINGTON	29	5-13	0-3	0-0	4-0-4	5	0	4	0	2	10
OREGON	35	7-14	0-1	5-6	2-0-2	3	4	3	0	0	19
at Arizona	13	7-8	0-0	1-2	0-0-0	5	0	2	0	0	15
at Arizona State	32	3-8	0-1	0-0	0-3-3	4	0	4	0	2	6
STANFORD	24	2-7	0-2	1-2	1-0-1	5	1	5	0	0	5
CALIFORNIA	36	4-16	0-2	5-6	2-3-5	4	2	1	0	1	13
at USC	24	1-11	0-2	0-0	0-1-1	3	0	1	1	1	2
at UCLA	30	4-12	0-0	5-6	0-4-4	1	0	5	0	1	13
at CSU Bakersfield	17	0-5	0-1	0-0	1-5-6	4	0	3	0	0	0
at Oregon	34	8-20	0-0	9-14	5-6-11	2	1	3	1	2	25
ARIZONA STATE	32	8-10	0-0	0-1	0-2-2	4	0	2	0	1	16
ARIZONA	35	5-15	0-2	3-6	2-3-5	5	4	5	0	0	13
at California	30	5-18	1-4	4-5	0-2-2	3	3	3	0	1	15
at Stanford	27	7-15	1-2	1-2	1-1-2	1	0	3	0	1	16
UCLA	27	4-9	0-2	3-4	0-2-2	1	2	1	0	2	11
USC	28	4-21	1-2	2-6	1-1-2	3	2	1	0	2	11
at Washington	31	4-11	0-3	2-2	0-3-3	1	3	3	0	1	10
at Washington State	16	1-6	0-0	0-0	1-2-3	4	0	2	0	1	2
vs Washington	27	6-15	0-0	2-4	2-3-5	2	0	5	0	3	14
vs UCLA	28	3-8	0-2	4-6	0-0-0	3	2	8	0	3	10

Haiden Palmer's Career Statistics

Season	gp-gp	min/avg	Total			3-Point			F-Throws			Rebounds				Scoring				
			fg-fg	pct.	fg-fg	pct.	ft-fta	pct.	off	def	tot	avg.	pf	fo	ast	to	blk	stl	pts	avg
2009-10	31-31	826/26.6	130-347	.375	8-48	.167	67-105	.638	43	65	108	3.5	81	0	39	91	5	44	335	10.8
2011-12	34-29	939/27.6	167-413	.404	52-150	.347	37-60	.617	71	82	153	4.5	70	2	68	64	13	78	423	12.4
TOTALS	65-60	1765/27.2	297-760	.390	60-198	.303	104-165	.630	114	147	261	4.0	151	2	107	155	18	122	758	11.7

**2009-10: stats from Oregon State University



5 MAIKI VIELA

Guard • 5-6 • Sophomore • Lahaina, HI

HIGH SCHOOL

Attended Lahainaluna High in Lahaina, Hawaii...was a four-year varsity letterwinner...named a PARADE Magazine All-American in 2011...is Gonzaga's second-ever PARADE All-American... is the

first Maui Interscholastic League (MIL) athlete in any sport to be named a PARADE All-American...averaged 17.3 points, 5.0 rebounds, 4.7 assists and 3.0 steals per game in her senior season when the Lunas broke the MIL all-sports winning streak record and moved it to 59-straight - Viela played in 55 of those wins... is a two-time Gatorade State Player of the Year (2010, 2011) and was State Player of the Year in 2010 for the Honolulu Advertiser and Star-Bulletin, an award for which she finished second this year in Honolulu Star-Advertiser...also was a semifinalist for the McDonald's All-America Game, and has been an MIL All-Star four times, twice as Division I Player of the Year...as a junior was named All-MIL first team, first team All-State by the Maui News and led the team to the H.H.S.A.A. state championship...in the semi-finals versus Punahou, Viela scored 29 points, including 17 from the free throw line...was a first-team All-MIL selection as a sophomore and second team as a freshman.

FRESHMAN (2011-12)

Saw action in 11 games for the Bulldogs...finished the season scoring 20 points, grabbing six rebounds, dishing out five assists and blocking two shots...first collegiate points came in Zags opening game win over Hofstra, No. 11; scoring two points in four minutes of play...tallied a career-high five points in the Bulldogs win over Saint Francis (Pa.), Jan. 1 as she was 2-of-3 from the floor, including 1-1 from beyond the 3-point arc...also dished out two assists against the Red Flash...scored four points in eight minutes of action, and added a block, in a win over the University of San Francisco, Jan. 12...also had four points against the University of Portland, Feb. 2.

MISC.

3.29 high school GPA...Uncle Brian Ching was a standout soccer player at Gonzaga and has had a decorated professional career; currently a member of the Houston Dynamo, was named the 2006 MLS Cup MVP and was a member of the US National Team...parents are Laurie and Chad Viela...has a brother named Ikaika and two sisters; Malika and Tavi.

GAME-BY-GAME STATISTICS

2011-12 (Freshman)												
Opponent	M	Fg-Fga	3m-3a	Ft-Fta	O-D-Reb	PF	A	TO	B	S	Pts	
HOFSTRA PRIDE	4	1-3	0-1	0-0	1-0-1	0	0	0	0	0	2	
UC RIVERSIDE	8	0-1	0-1	1-2	0-1-1	1	2	2	0	0	1	
SAINT FRANCIS	7	2-3	1-1	0-0	0-0-0	1	2	2	0	0	5	
at Pepperdine	1	0-0	0-0	0-0	0-0-0	0	0	1	0	0	0	
at Loyola Marymount	3	1-1	0-0	0-0	0-0-0	0	0	0	0	0	2	
SAN FRANCISCO	8	2-4	0-1	0-0	0-1-1	0	0	0	1	0	4	
PORTLAND	6	1-3	1-2	1-2	0-0-0	0	0	2	0	0	4	
at Brigham Young	3	0-0	0-0	0-0	0-0-0	0	0	1	0	0	0	
at San Francisco	4	0-0	0-0	0-0	0-0-0	1	1	2	0	0	0	
SANTA CLARA	6	1-1	0-0	0-0	0-0-0	2	0	1	1	0	2	
PEPPERDINE	2	0-1	0-0	0-0	0-3-3	0	0	0	0	0	0	



Maiki Viela's Career Statistics

Season	gp-gs	min/avg	Total		3-Point		F-Throws		Rebounds				Scoring							
			fg-fga	pct	fg-fga	pct	ft-fa	pct	off	def	tot	avg	pf	fo	ast	to	blk	stl	pts	avg
2011-12	11-0	52/4.7	8-17	.471	2-6	.333	2-4	.500	1	5	6	0.5	5	0	5	11	2	0	20	1.8
TOTAL	11-0	52/4.7	8-17	.471	2-6	.333	2-4	.500	1	5	6	0.5	5	0	5	11	2	0	20	1.8



10 DANIELLE WALTER

Guard • 6-0 • Sophomore • Pasco, WA

HIGH SCHOOL

Was rated the No. 73 prospect in the ESPN HoopGurlz Hundred and No. 22 in her position...was a four-year varsity member at Pasco high...she led the CBBN Columbia League in scoring as a senior

at 22.8 points per game, twice scoring 36 in a game...as a senior she also averaged 4.4 assists, 5.0 rebounds and 3.3 steals and 2.0 blocks per content and was named CBBN Columbia Most Valuable Player...in her final season at Pasco, she also earned Washington Sporting News honorable mention All-American, Tri-City All-Area Most Valuable Player for the second consecutive season and first team All-State for the third-straight season...as a junior she helped Pasco to an undefeated regular-season averaging 10.8 points, 5.0 rebounds and 5.0 assists and bumped her scoring average to 16.9 points per game in the post season...she went on to be named the Most Valuable Player of the Eastern 4A Regional Tournament, garnered 4A first team accolades and was named Washington Sporting News honorable mention All-American...was selected to play in the Northwest Shootout and the Washington vs. Oregon All-Star game as a senior... was part of the Blazers AAU team that won the 2006 AAU National Championship.

RS-FRESHMAN (2010-11)

Redshirted her first season with the Bulldogs.

FRESHMAN (2011-12)

Saw action in 22 games for the Bulldogs, averaging 6.7 minutes per contest...scored 42 points, grabbed 17 rebounds, had 11 assists, made eight steals and blocked six shots...had a career day against Saint Francis (Pa.), Jan 1; scored a career-high 11 points - first ever double-figure scoring performance - hitting 4-of-6 from the field and going 2-of-2 at the charity stripe...tallied five points in 13 minutes of action in Gonzaga's Sweet Sixteen loss to the University of Kentucky, March 25...grabbed a career-high four rebounds and added four points versus the University of Portland, Feb. 2...dished out two assists, made two steals, grabbed two rebounds and blocked one shot in Bulldogs win over Loyola Marymount University, Jan. 26...dished out a career-high three assists and grabbed three rebounds in Zags win over Santa Clara University, Feb. 16.

MISC.

3.65 high school GPA...parents are Laura and Stephen Walter.

GAME-BY-GAME STATISTICS

2011-12 (Freshman)													
Opponent	M	FG	3m-3a	Ft-Fra	O-D-Reb	PF	A	TO	B	S	Pts		
HOFSTRA	4	2-2	0-0	0-0	0-0-0	0	0	0	0	0	4		
MONTANA	2	0-1	0-0	0-0	0-0-0	1	0	0	0	1	0		
UC RIVERSIDE	6	1-1	0-0	0-0	0-0-0	0	0	0	0	1	2		
at Portland	3	1-1	1-1	0-0	0-0-0	0	0	0	0	0	3		
SAINT FRANCIS	12	4-6	1-2	2-2	1-1-2	0	1	1	0	1	11		
at Pepperdine	11	1-2	0-0	0-0	0-1-1	0	1	1	1	0	2		
at Loyola Marymount	11	1-1	1-1	0-0	0-1-1	0	0	0	0	0	3		
SAN FRANCISCO	14	1-6	1-3	0-0	1-0-1	0	1	1	1	1	3		
SAINT MARY'S	2	0-1	0-1	0-0	0-0-0	0	0	1	0	0	0		
at Santa Clara	2	0-0	0-0	0-0	0-0-0	1	0	0	0	0	0		
LOYOLA MARYMOUNT	11	0-3	0-1	0-0	0-2-2	0	2	2	1	2	0		
PORTLAND	14	1-5	1-3	1-2	1-3-4	2	1	1	0	1	4		
SAN DIEGO	5	1-1	0-0	0-0	0-0-0	0	0	0	0	0	2		
at Brigham Young	5	0-1	0-1	0-0	0-0-0	0	0	0	0	0	0		
at San Francisco	9	0-1	0-1	0-0	0-0-0	0	0	1	0	1	0		
SANTA CLARA	9	0-1	0-0	0-0	2-1-3	0	3	2	0	0	0		
PEPPERDINE	6	1-2	0-1	1-1	0-1-1	0	0	0	0	0	3		
BYU	1	0-0	0-0	0-0	0-0-0	0	0	0	0	0	0		
vs BYU	1	0-1	0-0	0-0	0-0-0	0	0	0	0	0	0		
RUTGERS	4	0-0	0-0	0-0	0-1-1	1	1	0	0	0	0		
MIAMI	3	0-1	0-0	0-0	1-0-1	0	1	0	0	0	0		
vs Kentucky	13	2-2	1-1	0-0	0-0-0	0	0	0	0	0	5		



Danielle Walter's Career Statistics

Season	gp-gs	min/avg	Total		3-Point	F-Throws			Rebounds				Scoring							
			fg-fga	pct	fg-fga	pct	ft-fita	pct	off	def	tot	avg	pf	fo	ast	to	blk	stl	pts	avg
2011-12	22-0	148/6.7	16-39	.410	6-16	.375	4-5	.800	6	11	17	0.8	5	0	11	10	3	8	42	1.9
TOTAL	22-0	148/6.7	16-39	.410	6-16	.375	4-5	.800	6	11	17	0.8	5	0	11	10	3	8	42	1.9



12 TAELOR KARR

Guard • 5-8 • Senior • Paola, KS

HIGH SCHOOL

Named to the 2009 Kansas Basketball Coaches Association All-Star team...selected to the 2009 Greater Kansas City Basketball Coaches Association All-Star team...Kansas All-State

second team selection in 2009...garnered 2009 Tri-County Co-Player of the Year honors...Tri-County first team selection in 2007 and 2009...Tri-County second team recipient in 2006... One of 64 players from 17 states to play in the 2008 Miss Basketball Showcase...Team, the Missouri Valley Eclipse, captured the tournament title and Karr was named the tournament MVP...concluded senior season at Paola High by averaging 14.6 points, 3.3 rebounds, 3.3 steals and 1.8 assists per game... helped Paola to a fourth-place finish at the 2009 Kansas State Championships...led Paola to two Kansas Sub-State titles (2007 and 2009)...averaged 14 points and 4.4 assists in her sophomore season...three-year letterwinner in track and participated in volleyball for three seasons.

FRESHMAN (2009-10)

Played at Kansas State University...earned Big 12 Freshman of the Week honors on Jan. 18, 2010...Fall 2009 Big 12 Commissioner's Honor Roll recipient...appeared in all 32 games and started 30 including the final 23 contests of the season... averaged 29.8 minutes per game...finished third on the team in scoring (9.1 ppg), rebounding (4.5 rpg) and assists (1.7 apg)...ranked 28th in Big 12 for points per game (9.8) in league contests...scored in double figures in 16 career games, including six straight from Dec. 29 - Jan. 23...led the team in steals with 49 and was the first freshman to do so since the 2005-06 season...notched 16 games with two or more steals and six games with three or more...led the team and ranked seventh in the Big 12 in three-point field goal percentage (.386) for all games...ranked ninth in the league in three-point field goal percentage (.353) for Big 12 contests...had 18 games with two or more made three-point field goals, including six games with four or more conversions...registered first career double-double during first round of the 2010 Big 12 Championships against Texas Tech (3/11/10) with 16 points and 12 rebounds... tallied a career-high 19 points and three steals at Texas A&M (2/13/10)...carded 17 points, six rebounds and three steals at BYU (11/27/09)...scored 16 points on 6-of-14 shooting, including 4-of-8 from beyond the arc against Nebraska (3/6/10)...registered 15 points, five rebounds and three steals

at Missouri (1/13/10)...notched 15 points on a career-high 5-of-8 shooting from the 3-point line against Yale (1/2/10)... most 3-point field goals made in a game by a freshman since 2001-02.

SOPHOMORE (2010-11)

Played at Kansas State University...played in all 32 games this season, starting 29...reset her season career-highs in points (329), rebounds (153), assists (62) and blocks (5)...ranked third on the team and 26th in the Big 12 in scoring...ranked 14th in the Big 12 in three-point field goals made per game (1.5)...ranked third on the team in rebounding...second on the team in steals...third on the team in assists...scored in double figures in 18 games...pulled in five or more rebounds in 12 games, including a career-high-tying 12 rebounds against UC Davis (12/12/10)...broke into double figures for the first time with 10 points against Western Illinois (11/21/10)...added three rebounds, three assists and a steal against the Leather-necks...carded 16 points on 6-of-10 shooting, including 4-of-6 from beyond the arc, at College of Charleston (11/27/10)...also pulled in seven rebounds and dished out three assists against the Cougars...notched seven points, four rebounds, a personal season-high five assists and tied her career-high with three steals against South Dakota State (11/30/10)...tallied a personal season-high 17 points on 7-of-14 shooting, including 3-of-6 from beyond the arc, at Iowa (12/5/10)...also registered four rebounds, two assists, a block and a steal against the Hawkeyes...recorded a game-high 16 points on 7-of-8 shooting, including 2-of-3 from beyond the arc, against North Dakota (12/8/10)...recorded K-State's first double-double of the season with a season-high-tying 17 points and a career-high-tying 12 rebounds against UC Davis (12/12/10)...also carded three steals against the Aggies...led the team with 13 points at UTSA (12/20/10)...also recorded a career-high five steals and pulled in seven rebounds against the Roadrunners... came off the bench at Oklahoma (1/12/11) to tally nine points and seven rebounds...returned to starting lineup to score 10 points and pull in three rebounds against Missouri (1/19/11)...tallied 13 points, four rebounds, two steals and a block at Colorado (1/26/11)...tied her career-high with 19 points, on 6-of-9 shooting including 3-5 from beyond the arc, against Kansas (1/29/11)...tied her career-high for a second time with 19 points on 7-of-9 shooting, including a career-high 5-of-7 from deep against Colorado (2/16/11).

Taelor Karr's Career Statistics

Season	gp-gp	min/avg	Total		3-Point		F-Throws		Rebounds				Scoring							
			fg-fg	pct.	fg-fg	pct.	ft-fita	pct.	off	def	tot	avg.	pf	fo	ast	to	blk	stl	pts	avg
2009-10	32-30	954/29.8	102-252	.405	56-145	.386	31-47	.660	29	115	144	4.5	79	0	55	61	2	49	291	9.1
2010-11	32-29	1067/33.3	124-286	.434	48-159	.302	33-43	.767	32	121	153	4.8	76	0	62	54	5	45	329	10.3
2011-12	34-29	966/28.4	89-222	.401	46-126	.365	31-44	.705	15	95	110	3.2	58	0	152	57	9	42	255	7.5
TOTALS	98-88	2987/30.5	315-760	.414	150-430	.349	95-134	.709	76	331	407	4.2	213	0	269	172	16	136	875	8.9

2009-10 & 2010-11: stats from Kansas State University.



13 MICHAELA O'ROURKE

Guard • 5-10 • Freshman • Bellevue, WA

HIGH SCHOOL

Attended Eastside Catholic high school...was a four-year varsity letterwinner...named the 2012 Metro League Player of the Year after averaging 19.3 points per game for Eastside Catholic...

was also named All-Metro League...played in both the Queen of the Hardwood All-Star game and the Washington-North Idaho All-State game.

MISC.

3.01 high school GPA...her cousin Regan Freuen Drew played basketball at Stanford University.





14 SUNNY GREINACHER

Forward • 6-4 • Sophomore • Essen, Germany

HIGH SCHOOL

Attended both Grashof Gymnasium (Essen, Germany) and Willamette high (Eugene, Ore.)...was a foreign exchange student her sophomore year and led Willamette high, coached by Paul Brothers, to

the Oregon 5A state championship and a perfect 27-0 record... scored 24 points and had 12 rebounds in the state championship game and was named the tourney's most outstanding player...also named the 2008-09 Oregon 5A State Player of the Year...played for the German U18 National Team for three years....averaged 14.0 points and nearly 11.0 rebounds in the 2010 European Championships in Timisoara, Romania as Germany finished ninth... in 2009, was named Best Center at the All-European Championships in the U18 Division...also the Most Valuable Player of the U18 Tournament in Slovenia with the German National Team.

FRESHMAN (2011-12)

The Bulldogs first player from Germany...named to the West Coast Conference All-Freshman Team...saw action in all 34 games for the Bulldogs, getting the starting nod twice...scored 132 points (3.9 ppg), grabbed 70 rebounds (2.1 rpg), dished out 29 assists, made 14 steals and had eight blocks...played 21 minutes off the bench versus Hofstra, Nov. 11 scoring eight points, grabbing five rebounds, dishing out four assists and blocking two shots... had seven points, five rebounds, two steals and one block in 20 minutes of play at the University of Idaho, Nov. 17...first double-digit point game came versus Portland State, Nov. 27 - tallied 10 points in 18 minutes...her first collegiate start came against Eastern Washington, Dec. 9...grabbed a career-high seven rebounds in GU's win over Saint Francis, Jan. 1...scored a then-career-high 12 points, hitting 4-of-5 from the field and the free throw line, in 18 minutes of play at Loyola Marymount University, Jan. 7...bested her career-high by two points in GU's win over San Francisco; finished with 14 points...drained her first career 3-pointer in the Bulldogs win over Santa Clara University, Feb. 16.

MISC.

Full name is Sonja Griener, but goes by Sunny...hometown of Essen, Germany is a city in the central part of the Ruhr area in North Rhine-Westphalia, Germany...located on the River Ruhr, its population of approximately 579,000 makes in the 9th-largest city in Germany...parents are Jochen and Berit Greinacher...has a brother named Alexander and a sister named Jessica.

GAME-BY-GAME STATISTICS

2011-12 (Freshman)	M	Fg-Fga	3m-3a	Ft-Fta	O-D-Reb	PF	A	TO	B	S	Pts
HOFSTRA	21	2-2	0-0	4-6	2-3-5	3	4	1	2	0	8
at Stanford	15	1-2	0-0	1-2	0-1-1	1	1	1	0	0	3
at Idaho	20	2-4	0-0	3-3	4-1-5	2	0	1	1	2	7
PORTLAND STATE	18	5-7	0-0	0-0	0-0-0	5	1	4	1	0	10
at Washington State	7	2-2	0-0	0-0	0-0-0	0	0	3	0	0	4
at Cal State Fullerton	19	1-3	0-0	0-0	0-4-4	1	2	1	1	0	2
USC	12	1-2	0-0	1-2	3-2-5	0	0	1	0	0	3
EASTERN WASHINGTON	19	4-6	0-0	0-0	1-0-1	0	3	3	0	0	8
MONTANA	12	3-7	0-0	1-1	2-0-2	1	0	0	0	0	7
UC RIVERSIDE	16	1-4	0-0	2-2	4-1-5	1	2	6	0	2	4
vs GEORGIA	10	1-2	0-0	0-0	0-0-0	1	0	0	0	0	2
vs DAYTON	4	0-0	0-0	0-0	0-2-2	0	1	1	0	0	0
at Portland	5	0-0	0-0	2-2	0-0-0	0	1	1	0	3	2
SAINT FRANCIS	22	4-4	0-0	0-1	3-4-7	3	2	2	1	1	8
at Pepperdine	6	2-2	0-0	2-2	0-1-1	0	2	1	0	0	6
at Loyola Marymount	18	4-5	0-0	4-5	2-3-5	0	2	0	0	1	12
SAN FRANCISCO	21	5-10	0-0	4-4	5-1-6	1	2	1	0	1	14
SAINT MARY'S	5	0-0	0-0	1-2	0-1-1	0	0	2	0	0	1
at Santa Clara	10	1-5	0-0	0-0	0-1-1	0	0	1	0	0	2
at San Diego	4	1-2	0-0	0-0	1-0-1	1	0	0	0	0	2
LOYOLA MARYMOUNT	14	3-4	0-0	1-2	1-2-3	1	3	0	1	1	7
at Saint Mary's	4	0-1	0-0	0-0	0-0-0	2	0	0	0	0	0
PORTLAND	13	1-4	0-0	2-4	3-1-4	0	1	0	0	0	4
SAN DIEGO	4	0-0	0-0	0-0	0-0-0	0	0	0	0	0	0
at Brigham Young	8	0-0	0-0	0-0	0-1-1	1	0	0	0	0	0
at San Francisco	14	0-2	0-0	2-2	2-2-4	1	0	3	0	1	2
SANTA CLARA	12	3-4	1-1	1-2	1-2-3	0	1	0	0	1	8
PEPPERDINE	6	0-2	0-0	0-0	0-0-0	0	1	1	1	0	0
BYU	6	1-2	0-0	2-2	0-2-2	0	0	0	0	0	4
vs Saint Mary's	3	0-1	0-0	0-0	0-0-0	0	0	1	0	0	0
vs BYU	1	1-2	0-0	0-0	1-0-1	0	0	0	0	1	2
RUTGERS	1	0-0	0-0	0-0	0-0-0	0	0	1	0	0	0
MIAMI	0+	0-0	0-0	0-0	0-0-0	0	0	0	0	0	0
vs Kentucky	2	0-0	0-0	0-0	0-0-0	0	0	0	0	0	0



Sunny Greinacher's Career Statistics

Season	gp-gs	min/avg	Total		3-Point		F-Throws		Rebounds					Scoring						
			fg-fga	pct	fg-fga	pct	ft-fa	pct	off	def	tot	avg	pf	fo	ast	to	blk	stl	pts	avg
2011-12	34-2	352/10.4	49-91	.538	1-1	1.000	33-44	.750	35	35	70	2.1	25	1	29	36	8	14	132	3.9
TOTAL	34-2	352/10.4	49-91	.538	1-1	1.000	33-44	.750	35	35	70	2.1	25	1	29	36	8	14	132	3.9



22 SHANIQUA NILLES

Forward • 6-0 • RS-Freshman • Spokane, WA

HIGH SCHOOL

Attended West Valley High in Spokane...was a four-year varsity letterwinner in both basketball and volleyball...also a 3-year varsity member of the track team...one of the top all-around athletes in the state of Washington...

as a junior, led the basketball team to the league and district championships and helped them place third at State with a 25-1 overall record...for her efforts she was named the Great Northern League Most Valuable Player and first team All-State...was the GNL leading scorer at 17.8 points per game, and also averaged 8.1 rebounds, 4.3 assists and 2.8 blocks per game...as a senior, averaged 18.2 points, 8.0 rebounds, 4.0 assists and 3.0 steals per contest...closed out her career as a 4-time first team All-GNL honoree, 3-time State All-Star game participant and 3-time state tournament participant...as a member of the volleyball team, she was named first team All-GNL all four years, made it to state all four years and was named the GNL Most Valuable Player in 2010.

FRESHMAN (2011-12)

Redshirted her first year at Gonzaga.

MISC.

3.78 high school GPA...father Jamie Nilles played basketball at Spokane Community College...mother Renae Nilles played basketball at Long Beach State University.





23 KIARA KUDRON

Forward • 6-2 • Freshman • New Boston, MI

HIGH SCHOOL

Was a four-year basketball letterwinner at Huron high school in New Boston, Mich...led Huron to 4-straight Huron League Championships, three district titles and one regional title...a four-time Michigan Class B All-State team honoree... a three-time Monroe Regional Player of the Year and All-Region Player of the Year...three-time Associated Press All-State honoree and Detroit News All-State honoree...Freepress second team Dream Team in 2012...closed out her career with 1,630 points, 520 assists and 376 steals; all school records...also grabbed 784 rebounds...senior year averaged 21.4 points, 11.9 rebounds, 6.1 assists and 4.1 steals per game...broke the school record for points in a season her senior campaign with 515...was also a member of the volleyball squad and was named the Huron League Player of the Year in 2011.

MISC.

3.66 high school GPA...parents are Michael and Tina Kudron...sister McKenzie Kudron is a sophomore on the Hofstra University women's basketball team...sister Michaela Kudron plays basketball for Henry Ford Community College.





24 KEANI ALBANEZ

Guard • 5-10 • Sophomore • Santa Barbara, CA

HIGH SCHOOL

Attended Buena high school in Ventura, Calif...was rated No. 72 overall in the class of 2011 by ESPN HoopGurlz and was widely considered one of the top guards in the nation...nominated

for the 2011 McDonald's All-America team...as a senior led Buena to the CIF-Southern Section Division 2AA and CIF Division II So Cal Regional finals...averaged 21.6 points, 5.6 rebounds, 2.9 steals and 2.7 assists per game...named Star's Girls Basketball Player of the Year... named All-County, the All-Channel League first team, was CIF Division III first team ...as a junior, was also named to the All-Channel League first team, was CIF Division III first team, was named first team All-Ventura County as well as named to the California All-Junior Team...averaged 17.0 points, 6.0 rebounds and 6.0 assists per game as a junior...as a sophomore, was named to the first team All-Channel League and was also a CIF Division II AA and Ventura County second team selection...Buena High was Channel League Champions both her sophomore and junior years...as a freshman, she was named first team All-Pacific League as well as second team All-CIF at Oxnard High School.

GAME-BY-GAME STATISTICS

2011-12 (Freshman)																
Opponent	M	Fg-Fga	3m-3a	Ft-Fta	O-D-Reb	Pf	A	TO	B	S	Pts					
HOUSTON	13	2-9	0-3	0-0	2-2-4	0	0	2	0	2	4					
at Stanford	7	0-2	0-0	0-0	0-0-0	1	1	0	0	0	0					
at Idaho	13	1-5	1-4	0-0	1-2-3	3	3	0	0	1	3					
PORTLAND STATE	21	5-6	0-1	2-2	1-4-5	0	4	1	0	1	12					
at Washington State	3	0-1	0-0	0-0	0-1-1	0	0	0	0	0	0					
at Cal State Fullerton	12	1-3	1-2	2-2	3-2-5	1	0	4	0	0	5					
USC	3	0-1	0-1	0-0	0-0-0	1	0	0	0	0	0					
EASTERN WASHINGTON	4	0-3	0-2	0-0	0-0-0	0	1	0	0	1	0					
MONTANA	6	0-2	0-0	0-0	0-1-1	1	0	0	0	0	0					
UC RIVERSIDE	12	1-3	0-0	1-2	2-1-3	1	1	2	0	4	3					
vs GEORGIA	9	0-0	0-0	0-0	2-0-2	0	1	2	0	0	0					
vs DAYTON	3	1-3	0-0	1-2	3-0-3	0	0	0	0	0	3					
at Portland	8	0-2	0-1	2-2	0-0-0	1	1	0	0	0	2					
SAINT FRANCIS	13	2-6	1-4	1-2	1-0-1	0	0	1	0	0	6					
at Pepperdine	11	0-3	0-0	0-0	1-0-1	3	1	3	0	0	0					
at Loyola Marymount	13	1-1	0-0	1-1	0-0-0	1	0	1	2	1	2					
SAN FRANCISCO	14	2-4	1-1	0-0	1-2-3	3	2	1	0	1	0					
SAINT MARY'S	2	0-0	0-0	0-0	0-0-0	0	1	0	0	1	0					
at Santa Clara	5	0-0	0-0	0-0	1-1-2	0	0	1	0	0	0					
at San Diego	10	1-2	0-0	0-0	0-2-2	0	0	0	0	1	2					
LOYOLA MARYMOUNT	9	1-3	0-1	0-0	0-1-1	0	0	1	0	0	0					
at Saint Mary's	8	2-2	0-0	0-0	0-1-1	0	1	0	0	1	4					
PORTLAND	11	0-2	0-1	2-2	3-0-3	2	0	2	0	3	2					
SAN DIEGO	0+	0-0	0-0	0-0	0-0-0	0	0	0	0	0	0					
at Brigham Young	3	0-2	0-0	0-0	0-0-0	1	0	1	0	0	0					
at San Francisco	8	1-2	0-0	0-0	0-0-1	1	0	0	0	0	1					
SANTA CLARA	9	0-0	0-0	1-2	1-2-3	2	1	1	0	0	2					
PEPPERDINE	3	0-0	0-0	3-4	0-2-2	0	0	0	0	0	1					
BYU	4	0-1	0-0	0-0	0-0-0	1	1	1	0	0	0					
vs BYU	1	0-0	0-0	0-0	0-0-0	0	0	0	0	0	0					
vs Kentucky	2	0-0	0-0	0-0	0-0-0	0	0	0	1	0	0					

FRESHMAN (2011-12)

Saw action in 31 games for the Bulldogs, averaging 7.7 minutes per contest...scored 62 points (2.0 ppg), grabbed 46 rebounds (1.5 rpg), had 19 assists and 19 steals and blocked six shots...had a game of 3's at the University of Idaho, Nov. 17 - her three points came on a 3-pointers; she also grabbed three rebounds and dished out three assists...scored a career-high 12 points in GU's 99-69 win over Portland State University, Nov. 27...also dished out a career-high four assists and grabbed a career-high five rebounds versus the Vikings...had six points - hitting 2-of-6 from the field, including 1-of-4 3-pointers - in GU's win over Saint Francis (Pa.), Jan. 1.

MISC.

Parents are Ronda and George Albanez...has three brothers; Ayden, Ahmad and Carmello...has one sister; Jayla.



Keani Albanez's Career Statistics

Season	gp-gs	min/avg	Total		3-Point		F-Throws		Rebounds					Scoring						
			fg-fga	pct	fg-fga	pct	ft-fta	pct	off	def	tot	avg	pf	fo	ast	to	blk	stl	pts	avg
2011-12	31-0	240/7.7	21-68	.309	4-21	.190	16-21	.762	22	24	46	1.5	23	0	19	23	6	19	62	2.0
TOTAL	31-0	240/7.7	21-68	.309	4-21	.190	16-21	.762	22	24	46	1.5	23	0	19	23	6	19	62	2.0



30 STEPHANIE GOLDEN

Center • 6-3 • Junior • Clayton, CA

HIGH SCHOOL

Was rated 18th at her position by ESPN Hoop Gurlz...named Diablo Foothill League Most Valuable Player as a senior after averaging 15.5 points, 9.0 rebounds and 4.0 blocks per contest...also was named Nor Cal All-Metro third team and ESPN Rise All-State honorable mention...Miramonte closed out her senior season with a 22-8 overall mark...earned first team All-Diablo Foothill honors as a junior after averaging 15.6 points, 9.3 rebounds, 2.4 steals, 1.9 assists and 1.8 blocks per game... also named Nor Cal All-Metro honorable mention...Miramonte finished the 2008-09 season with a 19-5 mark, including a 9-3 record in DFAL play...as a sophomore, she averaged 11.9 points, 6.9 rebounds, 2.0 blocks and 1.0 assist per game as the Matadors finished 2704 overall...she was tabbed second team All-DFAL her sophomore season...also a two-year member of the varsity track and field team.

FRESHMAN (2010-11)

Saw action in 24 games for Gonzaga, including 11 West Coast Conference contests...finished the season averaging 3.1 points and 1.6 rebounds per game...scored her first college points in GU's win over Whitman College; finished with six points, four steals and two blocks in 11 minutes of action...finished with six points, hitting 3-of-3 from the field against the University of North Dakota, Nov. 23...also had six points against Cal State Fullerton, Dec. 23...finished with nine points, a new career-high, in GU's win over Santa Clara University, Jan. 20...had a career-high six rebounds against Southern Utah University, Jan. 3.

SOPHOMORE (2011-12)

Saw action in 30 Bulldog games...scored 96 points (3.9 ppg), grabbed 64 rebounds (2.1 rpg), dished out 17 assists, made six steals and blocked six shots...scored six points in seven minutes of action versus Hofstra, Nov. 11...scored a then-career-high 10 points in GU's 99-69 win over Portland State University, Nov. 27; besting her previous career-high by one point...had a career-high night versus Loyola Marymount University, Jan 26; tallied a career-high 15 points - hitting 7-of-9 from the field and 1-of-2 at the free throw line - while passing out a career-high four assists in a career-high 19 minutes...scored nine points - hitting 4-of-5 from the floor and 1-of-1 at the charity

stripe - in GU's win over the University of Portland, Feb. 2.

MISC.

3.3 high school GPA...parents are Lisa Sharon and Ronald Golden.

GAME-BY-GAME STATISTICS

2011-12 (Sophomore)													
Opponent	M	Fg-Fga	3m-3a	Ft-Fta	O-D-Reb	PF	A	TO	B	S	Pts		
HOFSTRA	7	3-4	0-0	0-0	1-0-1	2	0	2	0	0	6		
at Stanford	13	3-6	0-0	0-0	1-2-3	3	0	0	0	0	6		
at Idaho	11	1-5	0-0	0-0	3-2-5	0	1	0	0	0	2		
PORTLAND STATE	12	4-7	0-0	2-2	0-4-4	1	2	2	0	0	10		
at Washington State	4	0-1	0-0	0-0	0-0-0	1	1	0	0	0	0		
at Cal State Fullerton	10	0-0	0-0	1-2	0-1-1	1	0	0	0	0	1		
EASTERN WASHINGTON	12	2-5	0-0	1-3	2-1-3	2	0	0	0	0	5		
MONTANA	10	0-1	0-0	0-0	0-2-2	2	0	0	0	1	0		
UC RIVERSIDE	9	2-4	0-0	0-0	0-1-1	1	0	2	1	1	4		
vs GEORGIA	14	1-2	0-0	0-0	0-1-1	1	0	2	0	0	2		
vs DAYTON	3	0-0	0-0	0-0	0-0-0	2	1	0	0	0	0		
at Portland	7	0-1	0-0	0-0	0-0-0	0	1	1	0	0	0		
SAINT FRANCIS	17	3-5	0-0	0-0	2-4-6	2	2	0	1	1	6		
at Pepperdine	9	3-3	0-0	0-1	2-2-4	1	0	0	1	1	6		
at Loyola Marymount	10	2-4	0-0	1-2	0-1-1	1	2	3	0	0	5		
SAINT MARY'S	2	0-0	0-0	0-0	0-0-0	0	0	0	0	0	0		
at Santa Clara	10	1-1	0-0	0-0	1-2-3	1	0	1	0	0	2		
at San Diego	3	0-0	0-0	0-0	1-2-3	0	0	2	0	0	0		
LOYOLA MARYMOUNT	19	7-9	0-0	1-2	1-5-6	4	4	4	0	1	15		
at Saint Mary's	10	0-1	0-0	1-2	1-1-2	1	0	1	0	0	1		
PORTLAND	11	4-5	0-0	1-1	1-2-3	3	0	1	0	0	9		
SAN DIEGO	8	1-3	0-0	0-0	0-1-1	1	0	0	0	0	2		
at Brigham Young	8	0-2	0-0	0-0	3-0-3	1	1	0	1	0	0		
at San Francisco	11	1-5	0-0	2-4	2-2-4	0	1	0	0	0	4		
SANTA CLARA	9	1-4	0-0	2-2	0-1-1	1	0	0	1	1	4		
PEPPERDINE	11	1-3	0-0	2-4	2-2-4	3	1	0	0	0	4		
BYU	5	1-1	0-0	0-1	0-1-1	0	0	0	0	1	2		
vs Saint Mary's	2	0-1	0-0	0-0	0-0-0	1	0	1	0	0	0		
vs BYU	2	0-1	0-0	0-0	0-0-0	0	0	0	0	0	0		
vs Kentucky	2	0-0	0-0	0-0	0-1-1	3	0	0	0	0	0		

2010-11 (Freshman)													
Opponent	M	Fg-Fga	3m-3a	Ft-Fta	O-D-Reb	PF	A	TO	B	S	Pts		
WHITMAN	11	2-3	0-0	2-3	0-1-1	1	1	0	2	4	6		
at North Dakota	9	3-3	0-0	0-0	1-4-5	1	0	3	0	0	6		
vs NC Central	13	1-4	0-0	0-0	0-1-1	0	0	1	0	0	2		
at Eastern Washington	5	1-2	0-0	0-0	1-0-1	2	0	2	0	0	2		
at Montana	3	0-0	0-0	1-2	0-0-0	1	0	0	0	0	1		
IDAHO	11	0-3	0-0	0-0	0-1-1	1	0	1	0	0	0		
BYU	3	0-0	0-0	0-0	0-1-1	1	1	1	0	0	0		
CAL STATE FULLERTON	12	3-8	0-0	0-2	2-3-5	1	1	1	1	0	6		
at Seattle	8	2-4	0-0	1-1	1-2-3	1	0	0	0	2	5		
SOUTHERN UTAH	17	4-5	0-0	0-2	5-1-6	2	2	2	0	1	8		
at Portland	7	0-1	0-0	0-0	1-0-1	3	0	1	0	0	0		
at Loyola Marymount	2	0-0	0-0	0-0	0-0-0	0	0	0	0	0	0		
SANTA CLARA	15	4-6	0-0	1-2	2-0-2	1	0	2	1	0	9		
SAN FRANCISCO	11	0-1	0-0	0-0	0-5-5	2	0	0	1	0	0		
at Saint Mary's (CA)	10	4-4	0-0	0-0	1-1-2	2	0	0	0	1	8		
PORTLAND	2	0-0	0-0	0-2	0-0-0	0	1	0	0	0	0		
LOYOLA MARYMOUNT	3	1-1	0-0	0-0	0-1-1	0	1	0	0	1	2		
at Santa Clara	11	1-2	0-0	0-0	1-0-1	3	0	0	0	1	2		
at San Francisco	9	4-5	0-0	0-0	1-1-2	2	0	1	0	0	8		
SAINT MARY'S	5	1-2	0-0	2-2	0-0-0	1	0	1	0	0	4		
USD	2	0-1	0-0	1-2	0-0-0	0	0	0	0	0	1		
vs Portland	3	1-2	0-0	0-0	0-0-0	0	0	0	0	0	2		
vs SMC	2	1-1	0-0	0-0	0-0-0	1	0	1	0	0	2		
vs STANFORD	1	0-0	0-0	0-0	0-0-0	0	0	0	0	0	0		

Stephanie Golden's Career Statistics

Season	gp-gs	min/avg	Total		3-Point		F-Throws		Rebounds				Scoring							
			fg-fga	pct	fg-fga	pct	ft-fa	pct	off	def	tot	avg	pf	fo	ast	to	blk	stl	pts	avg
2010-11	24-0	175/7.3	33-58	.569	0-0	.000	8-18	.444	16	22	38	1.6	26	0	7	17	5	10	74	3.1
2011-12	30-0	261/8.7	41-84	.488	0-0	.000	14-26	.538	23	41	64	2.1	39	0	17	22	6	6	96	3.2
TOTAL	54-0	436/8.1	74-142	.521	0-0	.000	22-44	.500	39	63	102	1.9	65	0	24	39	11	16	170	3.1



31 ELLE TINKLE

Guard • 6-2 • Freshman • Missoula, MT

HIGH SCHOOL

Attended Big Sky High School in Missoula, Mont...was a four-year basketball letterwinner...as a freshman, helped the Big Sky Eagles to the 2008-09 Montana AA State Championship... the Eagles closed out the year with

a 22-1 overall record and a 10-1 mark in the Western AA Conference...as a sophomore, earned First Team All-State and First Team All-Western AA...as a junior, averaged 15.4 points, 12.0 rebounds and 2.9 steals per game... was named First Team All-State and First Team All-Western AA for the second-consecutive season and closed out the year as the State AA leading rebounder...as a senior, averaged 16.9 points and 10.2 rebounds to lead Big Sky to a 12-12 record and a fifth-straight state tournament berth...became a three-time Class AA All-State honoree... also lettered in volleyball and track and field... as a junior, Tinkle took second in the 400-meters and sixth in the 200-meters at the AA State Championships.

MISC.

3.9 high school GPA...father Wayne Tinkle played for the University of Montana, played professionally in Europe for 10 years and is currently the head men's basketball coach at Montana...mother Lisa Tinkle also played for the University of Montana and was inducted into Montana's Hall of Fame...sister Joslyn Tinkle is currently a senior on the Stanford University women's basketball team...Eagle Medalion Winner for Outstanding Academics and Community Service... four-year Honor Roll student.





33 LINDSAY SHERBERT

Guard • 6-0 • RS-Junior • Temecula, CA

HIGH SCHOOL

Attended Great Oak High School...senior season played in both the McDonald's All-American and the WBCA All-American games...was named 2010 Parade Magazine third team

All-American and participated in the 2010 USA Basketball Women's U-18 National Team trials...averaged 27.0 points, 7.0 rebounds, 3.0 assists and 2.0 steals per game her senior season at Great Oak...Great Oak made it to the CIF quarterfinal game all four years...three-time Press Enterprise Player of the Year...league Most Valuable Player three-years.

FRESHMAN (2010-11)

Was a member of the University of California basketball team...was named to the Pac-10 All-Freshman team...finished her freshman season playing in all but one game and starting 32 times...fourth on the team in scoring (8.1 ppg) and rebounding (4.8 rpg)...led the team in made-threes (47) and three-point shooting (34.3 percent)...47-made threes is the seventh-highest single-season total in program history...scored 20 points, hitting four 3-pointers, against Saint Mary's College...followed that performance with 14 rebounds (10 coming in the first half) at the University of New Mexico...had the first double-double of her career against Portland State University with 15 points and 10 rebounds...hit the game-clinching 3-pointer in the final minutes against the University of Illinois, scoring 19 points against the Illini (6-for-9 shooting)...went 6-for-8 from three-point range at home against the University of Arizona...followed that in the next home game with a 3-for-6 3-point performance against USC...scored 17 points on the road at Oregon...scored 14 points with five rebounds and four steals at

the University Arizona...scored 10 first-half points at Stanford University, making her first four shots of the game...also matched a career-high with four steals against the Cardinal...returned to the starting lineup in the first round WNIT game against Cal Poly.

SOPHOMORE (2011-12)

Was a member of the University of California basketball team...was a Pac-12 All-Academic team honorable mention...played in all 35 games with 21 starts...averaged 5.2 points, 2.8 rebounds, while shooting 35.1 percent from the field and 34.1 percent from beyond the 3-point arc...hit three 3-pointers in Cal's upset bid over No. 24 Texas, finishing with 11 points...hit three important 3-pointers in the victory over Oregon State University, her second three three-pointer game of the season...returned to the starting lineup against the University of Oregon...scored 11 points, hitting three 3-pointers, to help send the game against USC to overtime...scored 11 points against Colorado in the quarterfinals of the Pac-12 Tournament, going 3-for-4 from the field and making both of her free throw attempts. Cal finished 25-10 overall, 13-5 in the Pacific-12 Conference and made it to the NCAA Tournament second round.

JUNIOR (2012-13)

Transferred to Gonzaga University...will sit out the season due to NCAA transfer rules.

MISC.

Parents are Ty and Deb Sherbert...father Ty played basketball at the University of Denver...is the great great niece of John Wooden...won the Pursuing Victory with Honor Character Award...played club basketball with Cal Swish...won Nike Nationals with Cal Swish in 2009.





44 SHELBY CHESLEK

Center • 6-5 • RS-Freshman • Pullman, WA

HIGH SCHOOL

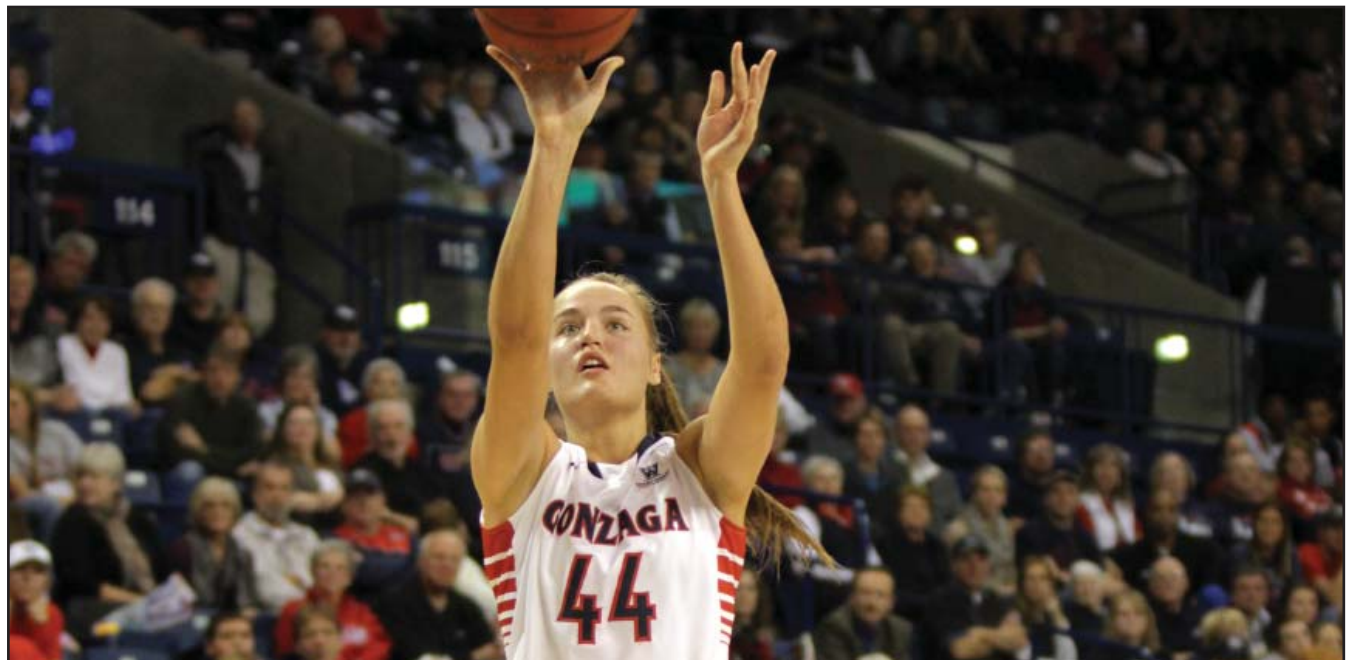
Attended Pullman High...was a four-year varsity member of the basketball and track teams and was a three-year varsity member of the volleyball squad...was a Junior Female Athlete of the Year Finalist in 2009 and 2010 for her successes in both volleyball and basketball...as a senior was named a McDonald's All-American Games Nominee and earned first team All-Great Northern League... as a junior, averaged 13.6 points, 8.0 rebounds and 2.0 blocks per contest, was named to the 2A State first team and was also named All-Great Northern League and District 7 first team....participated in the prestigious Jack Blair Memorial Basketball game as well as the Washington State all-star game...as a sophomore she was second team All-State and set a state tournament record with 60 rebounds... in 2009 and 2010, she was named the State 2A Most Valuable Player in volleyball and led Pullman to the state championship both years...is a three-time all-League performer and in both 2009 and 2010 was named All-American by PrepVolleyball.com...she closed out her high school career holding the Pullman record for blocks and is second in kills...also finished fifth in state in the high jump and ran the 200 meter as well.

FRESHMAN (2011-12)

Redshirted at Gonzaga.

MISC.

3.32 high school GPA...parents are Theresa Elliot-Cheslek and David and Jen Cheslek...has one brother named Joshua and four sisters; Ashleigh, Kaitlyn, Meaghan and Gracie...her mother Theresa played basketball at Washington State.



ATHLETIC TRAINER PETER CLARK

Peter Clark is in his fifth year as the women's basketball athletic trainer at Gonzaga University.

Clark comes to the Bulldogs from Whitworth College where he received his B.A. in athletic training as well as a B.A. in health, fitness and physical education. The local product of Mead High School worked with the baseball and men's basketball team as a primary athletic training student for the Pirates. He was also an athletic training student for the U.S. Figure Skating Championship in Spokane in 2007.

Along with women's basketball, his primary sport responsibilities at Gonzaga are men's tennis and cross country and track.

Peter Clark married the former Michelle Elliott in 2011.



Mike Nilson
Strength and Conditioning Coach



Rian Oliver
Basketball Academic Coordinator



Jon Ing
Graduate Manager

TOP ATTENDANCE/OVERTIME GAMES/100-POINT GAMES

GONZAGA TOP ATTENDANCE

HOME (ALL GAMES)

- 6,000 vs. Tennessee (12-30-08)
- 6,000 vs. Stanford (11-24-10)
- 6,000 vs. San Diego (2-26-11)
- 6,000 vs. Saint Francis (1-1-12)
- 6,000 vs. Pepperdine (2-18-12)
- 6,000 vs. BYU (2-25-12)
- 5,829 vs. San Diego (2-4-12)
- 5,825 vs. Portland (2-26-05)
- 5,824 vs. Miami (3-19-12)*
- 5,804 vs. UCLA (3-21-11)*
- 5,804 vs. Saint Mary's (1-14-12)

Home (conference games only)

- 6,000 vs. San Diego (2-26-11)
- 6,000 vs. Pepperdine (2-18-12)
- 6,000 vs. BYU (2-25-12)
- 5,829 vs. San Diego (2-4-12)
- 5,825 vs. Portland (2-26-05)
- 5,804 vs. Saint Mary's (1-14-12)
- 5,773 vs. San Francisco (1-12-12)
- 5,529 vs. Santa Clara (2-16-12)
- 5,136 vs. Portland (12-29-11)
- 5,086 vs. Loyola Marymount (1-26-12)

Road (all games - 3,000 or more)

- 14,598 vs. Tennessee (12-16-07)
- 11,646 vs. Stanford (3-28-11) >
- 10,717 vs. Louisville (3-26-11) >
- 10,273 vs. Providence (11-26-04) ~
- 10,150 at New Mexico (11-27-04) ~
- 7,882 at Purdue (12-2-06)
- 6,537 at Alaska-Anchorage (11-20-01) +
- 6,459 vs. Iowa (11-21-01) +
- 6,031 vs. Kentucky (3-25-12) ?
- 5,784 vs. Xavier (3-27-10)%
- 5,005 at Southwest Missouri State (3-21-05) !
- 4,503 vs. Stanford (11-13-11)
- 4,433 at Portland (2-25-99) *
- 4,265 at Oregon (11-22-02)
- 4,197 at Stanford (11-29-10)
- 4,150 at Pepperdine (2-15-91)
- 4,141 at Washington (11-28-03)
- 3,848 vs. Saint Mary's (3-7-11) ^
- 3,656 vs. North Carolina (3-20-10)%
- 3,574 at Montana (12-3-96)
- 3,474 at Montana (11-19-06)
- 3,408 vs. Montana State (12-21-07)
- 3,371 vs. San Diego (3-9-08) @
- 3,285 vs. Pepperdine (3-8-10) ^
- 3,190 vs. San Diego (3-9-09) ^
- 3,152 at South Dakota State (11-13-09)
- 3,142 vs. Texas A&M (3-22-10)%
- 3,119 at Wyoming (11-23-08)

Road (conference games only)

- 4,433 at Portland (2-25-99)
- 4,150 at Pepperdine (2-15-91)
- 2,165 at Saint Mary's (2-19-00)
- 2,077 at Portland (1-29-00) *
- 2,014 at BYU (2-9-12)
- 1,537 at Saint Mary's (1-8-07)
- 1,473 at Saint Mary's (1-26-02)
- 1,320 at San Diego (1-12-02)
- 1,173 at Santa Clara (1-15-00)
- 1,167 at Santa Clara (2-25-99)

BULLDOG OVERTIME GAMES

OVERTIME RECORD: (11-12) HOME: (6-5) ROAD: (4-4) NEUT: (1-3)
OVERTIME CONFERENCE RECORD: (7-6) HOME: (5-3) ROAD: (3-3)

Date	Opponent	W/L	Score	Site	OT
1-13-89	San Diego *	W	69-65	Home	OT
1-20-89	Loyola Marymount *	L	67-62	Away	OT
1-18-90	Loyola Marymount *	L	70-66	Home	OT
1-26-90	Pepperdine *	W	83-76	Away	OT
2-9-91	Pepperdine *	W	92-84	Home	2OT
12-9-91	Washington	L	73-67	Home	OT
1-6-92	Whitworth	W	72-64	Home	OT
1-12-95	San Diego *	W	77-64	Home	OT
1-14-95	San Francisco *	L	83-77	Home	OT
1-26-95	Saint Mary's *	W	82-75	Home	OT
1-24-97	Loyola Marymount *	L	66-62	Away	OT
12-3-99	American #	L	66-64	Neut.	OT
11-29-01	Pacific	L	86-85	Home	OT
1-12-02	San Diego *	W	75-65	Away	OT
1-19-02	Loyola Marymount *	L	76-74	Home	OT
3-8-03	Santa Clara +	L	60-59	Neut.	OT
1-15-04	San Francisco	W	72-61	Away	OT
3-6-04	Pepperdine \$	W	66-64	Neut.	OT
1-12-06	Pepperdine *	L	59-58	Away	OT
12-9-06	Eastern Washington	W	103-102	Away	OT
1-11-06	Santa Clara *	W	78-73	Home	OT
12-2-07	UC Riverside !	L	75-65	Neut.	OT
11-13-09	South Dakota State	L	75-71	Away	OT

* - West Coast Conference Games; + - West Coast Conference Tournament (San Diego, CA); \$ - West Coast Conference Tournament (Santa Clara, CA); # - Southwest Airlines Lobo Classic (Albuquerque, NM); ! - Arizona State Classic (Tempe, AZ)

BULLDOG 100-POINT GAMES

Date	Opponent	W/L	Score	Site
12-31-84	Loyola Marymount	W	100-78	Away **
1-8-85	Warner Pacific	W	117-58	Away **
1-9-85	Pacific Lutheran	W	108-58	Away **
1-15-85	Central Washington	W	103-66	Away **
2-1-85	Seattle Pacific	W	102-71	Away **
2-14-85	Lewis-Clark State	W	107-62	Home **
2-18-85	Whitman	W	113-75	Away **
2-20-85	Central Washington	W	102-81	Home **
2-22-85	Seattle University	W	110-68	Home **
2-23-85	Seattle Pacific	W	111-84	Home **
12-17-88	Saint Martin's	W	102-46	Home
3-26-94	NE Louisiana #	W	105-69	Neutral
11-25-06	North Carolina @	L	101-63	Neutral
12-9-06	Eastern Washington	W	103-102 (OT)	Home
11-14-08	Eastern Oregon	W	101-44	Home
11-21-08	Montana State	W	100-47	Home
1-31-09	San Diego W	109-73	Away	
11-29-09	Stanford	L	105-74	Away
1-21-10	Pepperdine	W	107-64	Away
11-14-10	Whitman	W	114-40	Home
12-3-10	Eastern Washington	W	101-74	Away
12-23-10	Cal State Fullerton	W	101-52	Home
1-3-11	Southern Utah	W	102-61	Home
1-27-11	Saint Mary's	W	106-77	Away
2-19-11	San Francisco	W	103-59	Away
2-24-11	Saint Mary's	W	106-66	Home
11-11-11	Hofstra	W	101-88	Home

** 100-Point Games with Gonzaga as an NAIA member; # Women's NIT (Amarillo, Texas); @ Hawaiian Airlines Rainbow Wahine Classic

NCAA Tournament [Spokane, WA/McCarthy Athletic Center] ! Sportsview.TV Women's NIT [Springfield, MO]
* Game was a sellout despite not hitting 6,000 @ West Coast Conference Tournament [San Diego, CA]
> NCAA Tournament [Spokane, WA/Spokane Arena] ^ West Coast Conference Tournament [Las Vegas, NV]
+ Great Alaska Shootout [Anchorage, AK] % NCAA Tournament [Seattle, WA; Sacramento, CA]
\$ Hawkeye Challenge [Iowa City, IA] ? NCAA Tournament [Kingston, RI]
& Played at Spokane Arena [Spokane, WA] BOLD INDICATES 2011-12 SEASON GAME
~ New Mexico Tournament [Albuquerque, NM]

1,000-POINT CLUB



1. Heather Bowman - 2,165

Years	GP	FGM	FTM	Pts.	Avg.
2006-07	34	170	101	441	13.0
2007-08	29	217	150	584	20.1
2008-09	33	237	166	641	19.4
2009-10	33	198	103	499	15.1
Totals	129	822	520	2,165	16.8



2. Courtney Vandersloot - 2,073

Years	GP	FGM	FTM	Pts.	Avg.
2007-08	34	128	70	359	10.6
2008-09	32	180	129	524	16.4
2009-10	34	174	94	478	14.1
2010-11	36	254	162	712	19.8
Totals	136	736	455	2,073	15.2



3. Tammy Tibbles - 2,011

Years	GP	FGM	FTM	Pts.	Avg.
1984-85	30	215	45	475	15.8
1985-86	29	202	86	490	16.9
1986-87	27	240	114	597	22.1
1987-88	25	171	71	449	18.0
Totals	111	828	316	2,011	18.1



4. Jessica Malone - 1,703

Years	GP	FGM	FTM	Pts.	Avg.
1998-99	27	118	56	345	12.8
1999-00	28	134	78	405	14.5
2000-01	27	168	95	508	18.8
2001-02	29	148	59	445	15.3
Totals	111	568	288	1,703	15.3



5. Ivy Safranski - 1,702

Years	GP	FGM	FTM	Pts.	Avg.
1991-92	27	138	70	378	14.0
1992-93	26	146	93	429	16.5
1993-94	31	153	106	477	15.4
1994-95	24	143	92	418	17.4
Totals	108	580	361	1,702	15.8



6. Ashley Burke - 1,631

Years	GP	FGM	FTM	Pts.	Avg.
2001-02	29	122	77	324	11.2
2002-03	30	155	74	399	13.3
2003-04	30	163	108	444	14.8
2004-05	32	166	127	464	14.5
Totals	121	606	386	1,631	13.5



7. Kayla Standish - 1,583

Years	GP	FGM	FTM	Pts.	Avg.
2008-09	34	45	28	134	3.9
2009-10	34	110	48	275	8.1
2010-11	36	261	86	617	17.1
2011-12	34	214	127	557	16.4
Totals	138	630	289	1,583	11.5



8. Jennifer Mountain - 1,422

Years	GP	FGM	FTM	Pts.	Avg.
1987-88	27	49	22	131	4.9
1988-89	27	158	44	397	14.7
1989-90	27	163	71	429	15.9
1990-91	28	177	75	465	16.6
Totals	109	547	212	1,422	13.0



9. Katelan Redmon - 1,412

Years	GP	FGM	FTM	Pts.	Avg.
2009-10	32	153	37	355	11.1
2010-11	36	258	71	600	16.7
2011-12	34	184	87	457	13.4
Totals	102	595	195	1,412	13.8



10. Amy Simpson - 1,386

Years	GP	FGM	FTM	Pts.	Avg.
1982-83	26	180	79	439	16.8
1983-84	30	138	77	353	11.8
1984-85	32	84	77	245	7.7
1985-86	31	150	49	349	11.3
Totals	119	552	282	1,386	11.6



11. Carla Cufman - 1,333

Years	GP	FGM	FTM	Pts.	Avg.
1985-86	30	82	47	211	7.0
1986-87	27	128	70	326	12.1
1987-88	27	150	71	371	13.7
1988-89	28	167	86	425	15.2
Totals	112	527	274	1,333	11.9



12. Shannon Mathews - 1,318

Years	GP	FGM	FTM	Pts.	Avg.
2001-02	29	101	45	283	9.7
2002-03	30	111	64	358	11.9
2003-04	30	109	45	309	10.3
2004-05	32	129	53	368	11.5
Totals	121	450	207	1,318	10.9



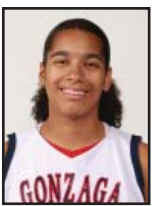
13. Stephanie Hawk - 1,231

Years	GP	FGM	FTM	Pts.	Avg.
2003-04	26	22	7	55	9.7
2004-05	32	114	72	300	11.9
2005-06	30	131	114	387	10.3
2006-07	34	168	135	489	11.5
Totals	122	435	328	1,231	10.1



14. Sarah Christensen - 1,230

Years	GP	FGM	FTM	Pts.	Avg.
1991-92	27	114	52	280	10.4
1992-93	26	108	41	257	9.9
1993-94	31	148	65	361	11.6
1994-95	26	142	43	332	12.8
Totals	110	512	201	1,230	11.2



15. Vivian Frieson - 1,106

Years	GP	FGM	FTM	Pts.	Avg.
2006-07	34	45	17	109	3.2
2007-08	27	108	23	241	8.9
2008-09	33	181	62	330	10.0
2009-10	34	181	62	426	12.5
Totals	128	471	157	1,106	8.6



16. Raeanna Jewell - 1,088

Years	GP	FGM	FTM	Pts.	Avg.
2001-02	29	105	42	275	9.5
2002-03	30	98	39	268	8.9
2003-04	30	96	41	272	9.1
2004-05	32	100	30	273	8.5
Totals	121	399	152	1,088	9.0



17. Janelle Bekkering - 1,050

Years	GP	FGM	FTM	Pts.	Avg.
2007-08	34	75	50	216	6.4
2008-09	34	99	53	285	8.4
2009-10	31	53	23	149	4.8
2010-11	36	150	49	400	11.1
Totals	135	377	175	1,050	7.8



18. Junita Rivera - 1,021

Years	GP	FGM	FTM	Pts.	Avg.
1991-92	27	132	80	344	12.7
1992-93	26	122	93	337	13.0
1993-94	30	126	88	340	11.3
Totals	83	380	261	1,021	12.3

CONZAGA
12

30-POINT CLUB/600 REBOUND CLUB/GAME RECORDS

THE 30-POINT CLUB

Bulldog Players with 30 or more points in a game

1. Amy Simpson	38 (16FG, 6FT)	vs. Lewis-Clark State (2-1-83)
2. Ivy Safranski	36 (14FG, 0FT)^	vs. NE Louisiana (3-26-94)
3. Ivy Safranski	35 (11FG, 9FT)~	vs. Portland (1-29-93)
4. Courtney Vandersloot	34 (10 FG, 11 FT)+	vs. Iowa (3-19-11)
Joy Pauley	34 (11FG, 7FT)&	vs. Saint Mary's (1-13-96)
6. Courtney Vandersloot	33 (12 FG, 6FT)	vs. Eastern Washington (12-3-10)
Heather Bowman	33 (14 FG, 5 FT)	vs. Saint Joseph's (1-2-09)
Stephanie Hawk	33 (10FG, 11FT)	vs. Santa Clara (1-11-07)
Jessica Malone	33 (9FG, 9FT)#	vs. Saint Mary's (3-1-01)
10. Katelan Redmon	32 (14 FG, 4FT)	at Santa Clara (1-19-12)
Courtney Vandersloot	32 (10 FG, 9 FT)+	at Marquette (11-28-08)
Heather Bowman	32 (10FG, 12 FT)	vs. Eastern Washington (12-9-06)
Jennifer Mountain	32 (13FG, 5FT)*	vs. Warner Pacific (1-3-90)
13. Kayla Standish	31 (10 FG, 11 FT)	vs. Saint Mary's (3-3-12)
Heather Bowman	31 (13 FG, 5 FT)	vs. San Diego (2-25-09)
Michelle Elliott	31 (11FG, 0FT)	vs. Sacramento State (12-8-07)
Ashley Burke	31 (13FG, 4FT)*	vs. Montana (1-4-04)
Ivy Safranski	31 (9FG, 8FT)&	vs. Idaho (11-26-93)
Ivy Safranski	31 (12FG, 4FT)+	vs. Loyola Marymount (1-16-93)
18. Kayla Standish	30 (15 FG)	vs. Iowa (3-19-11)
Kayla Standish	30 (11 FG, 7 FT)	vs. UCLA (3-21-11)
Heather Bowman	30 (8FG, 14FT)!	vs. Santa Clara (2-28-08)

1.000 (12-12) - Lisa Nichols vs. Wisconsin (11-24-90)
1.000 (11-11) - Ivy Safranski vs. Portland (2-16-94)
1.000 (11-11) - Courtney Vandersloot vs. UCLA (3-21-11)
1.000 (10-10) - Courtney Vandersloot at Portland (1-8-11)
1.000 (10-10)- Shannon Mathews vs. Eastern Wash. (1-8-03)
1.000 (10-10) - Lisa Nicholls vs. Portland (1-19-91)

FIELD GOALS MADE

16 - Amy Simpson vs. Lewis-Clark State (2-1-83)

3-POINTERS MADE

9 - Michelle Elliott vs. Sacramento State (12-28-07)

* Includes one 3-point field goal
 + Includes three 3-point field goals
 ~ Includes four 3-point field goals
 & Includes five 3-point field goals
 # Includes six 3-point field goals
 ^ Includes eight 3-point field goals
 ! Includes nine 3-point field goals

600 Career Rebound Club

Player	Rebounds	Years	Played
1. Kay Koppelman	983	4	1987-91
2. Heather Bowman	874	4	2006-10
3. Vivian Frieson	832	4	2006-10
4. Juanita Rivera	820	3	1991-94
5. Kayla Standish	809	4	2008-12
6. Ashley Burke	697	4	2002-05
7. Stephanie Hawk	684	4	2003-07
8. Loretta O'Brien	679	5	1980-86
9. Raeanna Jewell	643	4	2002-05
10. Jessica Malone	642	4	1998-02
11. Carla Curfman	621	4	1985-89
12. Kerri McIntosh	618	4	1985-89
13. Lisa Nichols	607	4	1987-91
14. Anne Bailey	601	4	2003-06

Individual Game Records

POINTS

38 - Amy Simpson vs. Lewis-Clark State (2-1-83)

REBOUNDS

20 - Anne Bailey vs. Portland (2-22-03)
 20 - Penny Thomley vs. Lewis-Clark State (2-20-82)
 20 - Sue Harvey vs. Central Washington (2-25-82)

ASSISTS

17 - Courtney Vandersloot vs. UCLA (3-21-11)
 Robin Allen vs. California Lutheran (1-7-87)

FREE THROWS MADE

15 - Courtney Vandersloot vs. UCLA (3-21-11)

FREE THROW PERCENTAGE (min. 10 att.)

1.000 (14-14) - Heather Bowman vs. Santa Clara (2-28-08)
 1.000 (13-13) - Ivy Safranski vs. Oregon State (12-3-94)
 1.000 (12-12) - Lisa Nichols vs. San Diego (2-8-90)



Kayla Standish became the first Gonzaga players to tally 30-plus points in back-to-back games. Standish scored 30 points in the Zags 2011 NCAA Tournament First Round win over Iowa and then had 30 points in their second round victory over UCLA.

BULLDOG WEST COAST CONFERENCE ACCOLADES

FIRST TEAM		HONORABLE MENTION (CONT.)		2007	Heather Bowman	2010	Janelle Bekkering (3.43)
1988	Carla Curfman	1993	Juanita Rivera	2008	Courtney Vandersloot		Tiffanie Shives (3.95)
	Tammy Tibbles	1995	Sarah Christensen	2009	Kelly Bowen	2011	Janelle Bekkering (3.48)
1989	Carla Curfman		Joy Pauley	2012	Sunny Greinacher		Claire Raap (3.48)
	Jennifer Mountain	1998	Staci Andrews				Tatiana Lorenzo (3.90)*
	Tammy Tibbles	1999	Holly Bruno	COACH OF THE YEAR		2012	Shannon Reader (3.26)
1990	Jennifer Mountain		Kristin Deal	1994	Julie Holt	*Honorable mention	
1991	Jennifer Mountain		Jessica Malone	2003	Kelly Graves		
	Kay Koppelman	2000	Jessica Malone	2005	Kelly Graves		
1992	Juanita Rivera	2002	Jessica Malone	2007	Kelly Graves		
1993	Ivy Safranski	2003	Shannon Mathews	2008	Kelly Graves		
1994	Juanita Rivera		Triana Allen	2010	Kelly Graves		
	Ivy Safranski	2004	Ashley Anderson	2011	Kelly Graves		
1995	Ivy Safranski	2005	Anne Bailey	ALL-ACADEMIC TEAM (GPA)			
1996	Joy Pauley		Raeanna Jewell	1991	Kay Koppelman (3.44)		
2001	Jessica Malone	2008	Jami (Bjorklund) Schaefer		Jennifer Mountain (3.21)		
2003	Ashley Burke	2010	Tiffanie Shives		Lisa Nicholls (3.50)		
2004	Ashley Burke	2011	Janelle Bekkering	1992	Ivy Safranski (3.27)		
	Shannon Mathews	2012	Haiden Palmer	1993	Ivy Safranski (3.23)		
2005	Ashley Burke	PLAYER OF THE YEAR		1994	Angie Hendricks (3.78)		
	Shannon Mathews	2005	Shannon Mathews		Kelli Howell (3.71)		
2006	Ashley Anderson	2007	Stephanie Hawk		Ivy Safranski (3.33)		
	Stephanie Hawk	2008	Heather Bowman	1995	Kelli Howell (3.71)		
2007	Heather Bowman	2009	Courtney Vandersloot		Joy Pauley (3.52)		
	Stephanie Hawk	2010	Courtney Vandersloot		Ivy Safranski (3.41)		
2008	Heather Bowman	2011	Courtney Vandersloot	1996	Joy Pauley (3.56)		
	Courtney Vandersloot	FRESHMAN/NEWCOMER OF THE YEAR		1997	Lydia Ledgerwood (3.72)		
2009	Heather Bowman	1988	Kay Koppelman (co-winner)	1998	Lydia Ledgerwood (3.75)		
	Courtney Vandersloot	1992	Juanita Rivera	2000	Staci Andrews (3.67)		
2010	Vivian Frieson		Ivy Safranski	2001	Holly Bruno (3.4)		
	Heather Bowman	2007	Heather Bowman	2002	Jessica Malone (3.22)		
	Courtney Vandersloot	2008	Courtney Vandersloot	2003	Celeste Quitiquit (3.81)		
2011	Vivian Frieson	2010	Katelan Redmon	2004	Jessica Malone (3.25)		
	Courtney Vandersloot	2012	Haiden Palmer (co-winner)	2005	Shannon Mathews (3.50)		
	Katelan Redmon	ALL-FRESHMAN TEAM		2006	Shannon Mathews (3.32)		
	Kayla Standish	1989	Missy Smith	2007	Shannon Mathews (3.4)		
	Kayla Standish	1990	Sheri Stemple		Ashley Burke (3.26)		
HONORABLE MENTION		1992	Stephanie Hawk (3.58)		Stephanie Hawk (3.60)		
1989	Kay Koppelman	1993	Michelle Elliott (3.60)	2008	Stephanie Hawk (3.60)		
1990	Kay Koppelman	2006	Michelle Elliott (3.60)		Jami (Bjorklund) Schaefer (3.94)		
1991	Lisa Nicholls		Jami (Bjorklund) Schaefer (3.95)		Michelle Elliott (3.44)		
1992	Ivy Safranski		Janelle Bekkering (3.30)		Jami (Bjorklund) Schaefer (3.95)		

GONZAGA YEAR-BY-YEAR

Year	Coach	Rec.	Pct.	Conf.	Pct.	Conf. Fin.	Other
1980-81	Linda Ponikvar	10-14	.416	---	---	---	---
1981-82	Linda Ponikvar	10-18	.357	---	---	---	---
1982-83	Linda Ponikvar	14-12	.538	---	---	---	---
1983-84	Bill Evans	21-9	.700	---	---	---	---
1984-85	Bill Evans	28-4	.875	---	---	---	NAIA District Qualifier
1985-86	Mike Peterson	21-10	.677	---	---	---	NAIA District Qualifier
1986-87	Mike Peterson	11-16	.407	---	---	---	NAIA District Qualifier
1987-88	Mike Peterson	18-9	.667	11-3	.786	1st	WCC Regular Season Champs
1988-89	Mike Peterson	15-13	.536	11-3	.786	2nd	---
1989-90	Julie Holt	10-17	.370	5-9	.357	5th	---
1990-91	Julie Holt	13-15	.464	7-7	.500	4th	---
1991-92	Julie Holt	8-19	.296	5-9	.357	6th	---
1992-93	Julie Holt	11-15	.423	6-8	.428	T4th	---
1993-94	Julie Holt	21-10	.677	10-4	.714	2nd	Women's NIT
1994-95	Kellee Barney	9-17	.346	4-10	.286	T6th	---
1995-96	Kellee Barney	4-23	.148	2-12	.143	8th	---
1996-97	Kellee Barney	4-23	.148	2-12	.143	7th	---
1997-98	Kellee Barney	11-16	.407	3-11	.214	7th	---
1998-99	Kellee Barney	8-19	.296	4-10	.286	T6th	---
1999-00	Kellee Barney	9-19	.321	2-12	.143	8th	---
2000-01	Kelly Graves	5-23	.178	0-14	.000	8th	---
2001-02	Kelly Graves	11-18	.379	2-12	.143	8th	---
2002-03	Kelly Graves	18-12	.600	9-5	.643	T2nd	---
2003-04	Kelly Graves	18-12	.600	10-4	.714	T2nd	Women's NIT First Round
2004-05	Kelly Graves	28-4	.875	14-0	1.000	1st	Women's NIT Second Round
2005-06	Kelly Graves	16-14	.533	11-3	.785	T1st	WCC Co-Regular Season Champs
2006-07	Kelly Graves	24-10	.706	13-1	.929	1st	NCAA First Round
2007-08	Kelly Graves	25-9	.735	13-1	.929	1st	Women's NIT Second Round
2008-09	Kelly Graves	27-7	.794	12-2	.857	1st	NCAA Second Round
2009-10	Kelly Graves	29-5	.853	14-0	1.000	1st	NCAA Regional Semifinals
2010-11	Kelly Graves	31-5	.861	14-0	1.000	1st	NCAA Regional Final
2011-12	Kelly Graves	28-6	.824	14-2	.875	1st	NCAA Regional Semifinals

ALL-TIME ROSTER

A		Angie Hendricks	1992-93-94	Q	
Lori Abraham	1981-82-83-84	Chelsea Herman	1993-94-95-96-97	Celeste Quitquit	2000-01-02
Keani Albanez	2012	Katherine Herman	2003		
Robin Allen	1985-86-87-88	Rebecca Higgins	1993	R	
Triana Allen	2001-02-03	Pam Holsinger	1983	Claire Raap	2008-09-10-11
Ashley Anderson	2003-04-05-06	Kelli Howell	1992-93-94-95	Shannon Reader	2009-10-11-12
Molly Anderson	2010-2011-12	Alana Hunt	1992	Jazmine Redmon	2011-12
Staci Andrews	1995-96-97-98			Katelan Redmon	2010-11-12
		J		Elaina Renius	2005-06-08
B		Rikki Jackson	2002	Tori Rhodes	1986-87
Anne Bailey	2003-04-05-06	Tennille Jeffries	1996-97-98-99-00	Katy Ridenour	2004-05-06-07
Tracy Baldwin	1991	Beth Jensen	1981-82-83	Juanita Rivera	1992-93-94
Theresa Baumgartner	1987-88-89	Raeanna Jewell	2002-03-04-05	Janet Robertson	1981-82-83-84
Grace Beauchane	1989-90			Cynthia Rosman	1986
Janelle Bekkering	2007-08-09-10-11	K		Jennifer Rosman	1986
Megan Benedict	2012	Rachel Kane	2004-05-06-07-08		
Erin Bergman	1999-00-01	Taelor Karr	2012	S	
Tessie Bertilino	1990	Karen Kime	1986-87	Ivy Safanski	1992-93-94-95
Anne Bickelhaupt	2001-02-03-04	Kay Koppelman	1988-89-90-91	Beth Salzman	1991-92
Kelly Bowen	2009-10-11-12	Kim Kucera	1981	Simone Santos	2006-07
Heather Bowman	2007-08-09-10			Jami Schaefer	2006-07-08-09
Lucia Brandon	1987	L		Carter Schick	2009-10-11
Maria Bresee	1985-86	Jennifer Lamb	1987	Sarah Schramm	2006
Amanda Brown	2007-08-09	Carmel Lampson	2000-01	Cheri Sharp	1990-91
Cheyenne Brown	2003-04	Tara Landon	1991	Ellen Shaw	2001
Holly (Turner) Bruno	1998-99-00	Julian Laney *	2002-05-06	Ashley Shearer	2003-04
Ashley Burke	2002-03-04-05	Delphine Lecoultre	2003-04-05	Rebekah Sherfey	1996
		Lydia Ledgerwood	1995-96-97-98	Tiffanie Shives	2008-09-10
C		Kathleen Linn	1981-82	Amy Jo Silva	1995-96
Sue Canoy	1987	Tatiana Lorenzo	2007-08-09-10-11	Amy Simpson	1983-84-85-86
Benibel Carrion	1993			Missy Smith	1989-90
Cameron Carroll	1998-99	M		Maria Stack	1985
Shelby Cheslek	2012	Jessica Malone	1999-00-01-02	Nora Stack	1981
Nathalie Chevallay	2000-01	Shannon Mathews	2002-03-04-05	Terri Stalder	1981-82
Sarah Christensen	1992-93-94-95	Regan McCliment	1995-96	Kayla Standish	2009-10-11
Chelsea Clark	1997-98-00-01	Melissa McCullough	1996-97	Sara Steblaj	2002
Carol Clingan	1988-89	Karla McGuire	1988	Sheri Stemple	1990-91
Nena Cook	1985	Kerri McIntosh	1986-87-88-89	Annette Steward	1996-97
Casey Correa	1999-00	Shenna McNairy	1998-99	Bernice Stime	2001-02
Heidi Crider	1990-91-92	Sheri McNeal	1983-84-85		
Carla Curfman	1986-87-88-89	Paula Mitchell	1982-83-84	I	
		Renay Mobley	1988-89	Ariam TecleMariam	2009-10
D		Leigh Morehouse	1981-82	Penny Thomley	1981-82-83
Nancy Darrow	1988-89	Claudia Morgan	1994-95	Tammy Tibbles	1985-86-87-88
Kristin Deal	1997-98-99-00	Jennifer Mountain	1988-89-90-91	Lorrie Tidwell	1992
Maura Doohan	1985	Ziya Muhammad	2002	Melanie Tipps	1998-99-00-02
Michelle Durkin	1981-82-83	Casy Murdock	1998		
		Cindy Murphy	1990	U	
E				Monica Uhrig	2003-04
Michelle Elliott	2007-08	N			
Missy Eskew	1991	Mandy Nelson	1992-93-94	V	
Kelly Ethier	1981-82	Lisa Nicholls	1988-89-90-91	Courtney Vandersloot	2008-09-10-11
		Shaniqua Nilles	2012	Lisa Vestal	1985-86
F				Maiki Viela	2012
Amanda Fahsholtz	2001	O		Valda Vitolins	1986
Leah Fenwick	1993-94-95	Loretta O'Brien	1983-84-85-86		
Vivian Frieson	2007-08-09-10	Rosie O'Brien	1981	W	
Donna Gentry	1991	Heather Osberg	1997-98-99-00	Danielle Walter	2011-12
Sandy Gere	1995-96-97-98	Lisa Osborn	1982-83-84	Jessica Waltz	1997-98-99-00
Michelle Gray	1992-93-94			Michelle Wiitala	1983-84-85
		P		Meghan Winters	2010-11-12
G		Colleen Palmer	1984		
Stephanie Golden	2011-12	Haiden Palmer	2011-12		
Sunny Greinacher	2012	Joy Pauley	1993-94-95-96		
		Sydney Perno	1997-98-99-00		
H		Kaitlyn Petersen	2010		
Colleen Harmon	1983-84-85	Tami Petersen	1981-82		
Dominique Harris	2005-06	Heidi Phillips	1992-93-94-96		
Tiosha Harrison	2001	Sasha Polishchuk	2006-07-08		
Sue Harvey	1981-82-83	Kathy Pradere	1982-83-84-85		
Maria Hasset	2006-07-08	Katie Prichard	2003-04-05-06		
Stephanie Hawk	2004-05-06-07				

RESULTS WHEN NATIONALLY RANKED

DATE	W/L	SCORE	POLLS		OPPONENT (LOCATION)
			AP	USA TODAY	
2-26-05	W	81-35	25	25	Portland (Home)
3-3-05	W	77-42	24	23	Portland (N - WCC Tournament - Santa Clara, CA)
3-5-05	W	58-40	24	23	Pepperdine (N - WCC Tournament - Santa Clara, CA)
3-6-05	L	66-77	24	23	Santa Clara (Away - WCC Tournament, Santa Clara, CA)
2-6-10	W	70-58	24	--	Portland (Away)
2-11-10	W	88-75	22	23	Saint Mary's (Away)
2-13-10	W	75-61	22	23	San Diego (Away)
2-18-10	W	73-40	21	22	Loyola Marymount (Home)
2-20-10	W	87-45	21	22	Pepperdine (Home)
2-25-10	W	83-52	19	20	Santa Clara (Away)
2-27-10	W	83-35	19	20	San Francisco (Away)
3-7-10	W	87-47	17	17	Santa Clara (Neutral - WCC Tournament, Las Vegas, NV)
3-8-10	W	76-48	17	17	Pepperdine (Neutral - WCC Tournament, Las Vegas, NV)
3-20-10	W	82-76	15	14	North Carolina (Neutral - NCAA Tournament, Seattle, WA)
3-22-10	W	72-71	15	14	Texas A&M (Neutral - NCAA Tournament, Seattle, WA)
3-27-10	L	56-74	15	14	Xavier (Neutral - NCAA Tournament, Sacramento, CA)
11-12-10	L	73-79	--	22	USC (Away)
11-14-10	W	114-40	--	22	Whitman (Home)
2-17-11	W	93-65	25	--	Santa Clara (Away)
2-19-11	W	103-59	25	--	San Francisco (Away)
2-24-11	W	106-66	23	23	Saint Mary's (Home)
2-26-11	W	80-58	23	23	San Diego (Home)
3-6-11	W	96-71	22	20	Portland (Neutral - WCC Tournament, Las Vegas, NV)
3-7-11	W	72-46	20	19	Saint Mary's (Neutral - WCC Tournament, Las Vegas, NV)
3-19-11	W	92-86	20	19	Iowa (Home - NCAA Tournament, Spokane, WA)
3-21-11	W	89-75	20	19	UCLA (Home - NCAA Tournament, Spokane, WA)
3-26-11	W	76-69	20	19	Louisville (Neutral - NCAA Tournament, Spokane, WA)
3-28-11	L	60-83	20	19	Stanford (Neutral - NCAA Tournament, Spokane, WA)
11-30-11	W	71-69	--	24	Washington State (Away)
12-2-11	W	73-60	--	24	Cal State Fullerton (Away)
12-4-11	L	51-58	--	24	USC (Home)
12-17-11	W	83-56	--	25	UC Riverside (Home)
12-19-11	W	71-68	--	25	Georgia (Neutral - Holiday Hoops Classic, Las Vegas, NV)
12-21-11	W	82-76	--	24	Dayton (Neutral - Holiday Hoops Classic, Las Vegas, NV)
12-29-11	W	80-65	--	24	Portland (Away)
1-1-12	W	90-52	--	24	Saint Francis (PA) (Home)
1-5-12	W	79-50	--	24	Pepperdine (Away)
1-7-12	W	80-54	--	24	Loyola Marymount (Away)
1-12-12	W	87-52	23	22	San Francisco (Home)
1-14-12	L	63-66	23	22	Saint Mary's (Home)
1-19-12	W	81-68	--	25	Santa Clara (Away)
1-21-12	W	55-44	--	25	San Diego (Away)
1-26-12	W	79-61	22	20	Loyola Marymount (Home)
1-28-12	W	75-70	22	20	Saint Mary's (Away)
2-2-12	W	77-56	20	19	Portland (Home)
2-4-12	W	68-58	20	19	San Diego (Home)
2-9-12	L	40-70	19	18	BYU (Away)
2-16-12	W	87-55	--	23	Santa Clara (Home)
2-18-12	W	66-40	--	23	Pepperdine (Home)
2-25-12	W	77-60	25	21	BYU (Home)
3-3-12	W	83-78	22	20	Saint Mary's (Neutral - WCC Tournament, Las Vegas, NV)
3-5-12	L	66-78	22	20	BYU (Neutral - WCC Tournament, Las Vegas, NV)
3-17-12	W	86-73	23	24	Rutgers (Home - NCAA Tournament, Spokane, WA)
3-19-12	W	65-54	23	24	Miami (Home - NCAA Tournament, Spokane, WA)
3-25-12	L	62-79	23	24	Kentucky (Neutral - NCAA Tournament, Kingston, RI)

BULLDOGS IN THE POST SEASON

1994 Women's NIT (Amarillo, TX)

Date	Opponent	Result
3-24-94	University of Pittsburgh	L, 77-89
3-25-94	New Mexico State University	L, 63-83
3-26-94	Northeast Louisiana University	W, 105-69

2004 Women's NIT 1st Round (Corvallis, OR)

Date	Opponent	Result
3-19-04	Oregon State University	L, 64-69

2005 Women's NIT 1st Round (Spokane, WA)

Date	Opponent	Result
3-16-05	Brigham Young University	W, 71-57

2005 Women's NIT 2nd Round (Springfield, MO)

Date	Opponent	Result
3-21-05	Southwest Missouri State University	L, 66-85

2007 NCAA First Round (Stanford, CA)

Date	Opponent	Result
3-17-07	Middle Tennessee State University	L, 85-46

2008 Women's NIT 1st Round (Spokane, WA)

Date	Opponent	Result
3-20-08	UC Davis	W, 81-60

2008 Women's NIT 2nd Round (Boulder, CO)

Date	Opponent	Result
3-24-08	University of Colorado	L, 82-68

2009 NCAA First and Second Rounds (Seattle, WA)

Date	Opponent	Result
3-21-09	Xavier University	W, 74-59
3-23-09	University of Pittsburgh	L, 65-60

2010 NCAA First and Second Rounds (Seattle, WA)

Date	Opponent	Result
3-20-10	University of North Carolina	W, 82-76
3-22-10	Texas A&M University	W, 72-71

2010 NCAA Regional Semifinals (Sacramento, CA)

Date	Opponent	Result
3-27-10	Xavier University	L, 74-56

2011 NCAA First and Second Rounds (Spokane, WA)

Date	Opponent	Result
3-19-11	University of Iowa	W, 92-86
3-21-11	UCLA	W, 89-75

2011 NCAA Regional Semifinals (Spokane, WA)

Date	Opponent	Result
3-26-11	University of Louisville	W, 76-69

2011 NCAA Regional Finals (Spokane, WA)

Date	Opponent	Result
3-28-11	Stanford University	L, 83-60

2012 NCAA First and Second Rounds (Spokane, WA)

Date	Opponent	Result
3-17-12	The State University of New Jersey, Rutgers	W, 86-73
3-19-12	University of Miami	W, 65-54

2012 NCAA Regional Semifinals (Kingston, RI)

Date	Opponent	Result
3-25-11	University of Kentucky	L, 79-62

SERIES RECORDS VERSUS OPPONENTS

Alaska Anchorage	1-0	North Carolina Central	1-0
Alaska-Fairbanks	3-5	North Dakota	2-0
American	0-1	Northern Colorado	1-0
Arizona State	0-4	Northeast Louisiana	1-0
Baylor	1-1	Northwestern State	1-0
Biola	0-1	Northwest Nazarene	1-0
Boise State	6-12	Notre Dame	0-1
Brigham Young	4-5	Oregon	0-8
Butler	1-0	Oregon State	0-2
California Lutheran	1-0	Pacific	1-2
UC Davis	3-0	Pacific (Ore.)	1-0
UC Irvine	1-1	Pacific Lutheran	3-0
UC Riverside	5-1	Pepperdine	28-29
UC Santa Barbara	1-2	Pittsburgh	0-2
UCLA	2-0	Portland	39-26
Cal Poly	1-2	Portland State	11-6
Cal State Fullerton	4-2	Providence	1-0
Cal State Northridge	1-0	Puget Sound	7-0
Carroll College	4-0	Purdue	0-2
Central Washington	17-2	Radford	0-1
Colgate	1-0	Rutgers	1-0
Colorado	0-3	Sacramento State	4-2
Concordia (Oregon)	2-0	Saint Francis	1-0
Davidson	0-1	Saint Joseph's	2-0
Dayton	1-0	Saint Mary's	32-23
Denver	1-2	St. Martin's College	10-2
Eastern Oregon	3-0	San Diego	33-20
Eastern Washington	26-14	San Diego State	0-3
Fordham	0-1	San Francisco	28-25
Fresno State	0-1	San Jose State	3-0
Georgia	1-0	Santa Clara	27-27
Hawai'i	0-3	Seattle Pacific	8-1
Hofstra	1-0	Seattle	10-4
Houston	0-1	Simon Fraser	5-4
Idaho	14-14	South Dakota State	0-2
Idaho State	4-2	Southern California	1-2
Illinois State	1-0	Southern Utah	1-1
Iowa	1-1	Southwest Missouri State	0-1
James Madison	0-1	Stanford	0-4
Kentucky	0-1	Tennessee	0-3
Lewis-Clark State	12-4	Tennessee-Chattanooga	0-1
Linfield College	1-0	Texas A&M	1-1
Louisiana-Monroe	1-0*	Texas Christian	1-0
Louisville	1-0	Texas Pan American	1-0
Loyola Marymount	33-21	Texas Southern	1-0
Marquette	1-2	U.S. International	0-1
Maryland	0-1	Utah	3-4
Memphis	1-0	Utah Valley State	2-2
Miami (Fla.)	1-1	Virginia	1-0
Michigan State	0-1	Warner Pacific	2-0
Middle Tennessee State	0-1	Washington	3-17
Mississippi	1-1	Washington State	6-15
Missouri-Kansas City	0-1	Weber State	2-4
Montana	12-17	Western Montana	3-0
Montana State	9-10	Western Washington	8-11
Montana State-Billings	1-1	Whitman	2-0
Montana State-Northern	2-0	Whitworth	17-2
Montana Tech	1-2	Wisconsin	0-1
Navy	0-1	Wyoming	2-1
Nebraska	0-1	Xavier	1-1
Nevada	3-1	Yale	1-0
New Mexico	0-1	* - formerly Northeast Louisiana	
New Mexico State	0-2	Includes records from NAIA and	
New Orleans	0-1	Division I	
North Carolina	1-1	(NAIA from 1980-1986)	

ALL-TIME TOURNAMENT RESULTS

<u>1986-87</u>	
Dial Classic (Pullman, WA)	1-1 (2nd)
Bulldog Invitational (Spokane, WA)	1-1 (2nd)
Northern Lights (Anchorage, AK)	1-2 (7th)
<u>1987-88</u>	
Wheatland Classic (Cheney, WA)	1-1 (3rd)
<u>1988-89</u>	
Boise State Tournament (Boise, ID)	1-1 (3rd)
Bulldog Invitational (Spokane, WA)	1-1 (2nd)
Wheatland Classic (Moscow, ID)	0-2 (4th)
<u>1989-90</u>	
Mark IV Classic (Moscow, ID)	1-1 (3rd)
Wheatland Classic (Spokane, WA)	0-2 (4th)
<u>1990-91</u>	
Coors Classic (Boulder, CO)	0-2 (4th)
Wheatland Classic (Pullman, WA)	1-1 (2nd)
<u>1991-92</u>	
Wheatland Classic (Cheney, WA)	0-2 (4th)
Titan Classic (Fullerton, CA)	0-2 (4th)
<u>1992-93</u>	
Thanksgiving Classic (Moscow, ID)	1-1 (3rd)
<u>1993-94</u>	
BYU Holiday Classic (Provo, UT)	1-1 (2nd)
<u>1994-95</u>	
G-T Classic (Corvallis, OR)	1-1 (2nd)
<u>1995-96</u>	
Cablevision Classic (Lincoln, NE)	0-2 (4th)
<u>1996-97</u>	
Gate City Shootout (Pocatello, ID)	1-1 (3rd)
Dial Classic (Pullman, WA)	0-2 (4th)
<u>1998-99</u>	
Wells Fargo Classic (Tucson, AZ)	1-1 (3rd)
<u>1999-00</u>	
SW Airlines Classic (Albuquerque, NM)	1-1 (3rd)
<u>2000-01</u>	
Pacific Bell Classic (San Diego, CA)	1-1 (3rd)
<u>2001-02</u>	
American Dream Classic (Pocatello, ID)	1-1 (2nd)
Great Alaska Shootout (Anchorage, AK)	1-1 (2nd)
<u>2002-03</u>	
Wahine Rainbow Classic (Honolulu, HI)	0-3 (8th)
<u>2003-04</u>	
Hawkeye Challenge (Iowa City, IA)	1-1 (3rd)
Seattle Times Classic (Seattle, WA)	1-1 (3rd)
<u>2004-05</u>	
Thanksgiving Classic (Albuquerque, NM)	1-1 (2nd)
Wells Fargo Holiday Classic (Tempe, AZ)	1-1 (2nd)
<u>2005-06</u>	
Paradise Jam (St. Thomas - U.S. Virgin Islands)	0-3 (4th)
Jahn Ascuaga's Nugget Classic (Reno, NV)	2-0 (1st)
<u>2006-07</u>	
Hawaiian Airlines Rainbow Wahine Classic (Honolulu, HI)	1-2 (4th)
<u>2007-08</u>	
Verizon Wireless/ASU Classic (Tempe, AZ)	0-2 (4th)
<u>2008-09</u>	
WBCA Classic (Milwaukee, WI)	2-1 (1st)
<u>2009-10</u>	
Las Vegas Holiday Hoops Classic (Las Vegas, NV)	0-2 (3rd)
<u>2010-11</u>	
Rainbow Wahine Showdown (Honolulu, HI)	2-1 (5th)
Holiday Hoops Classic (Seattle, WA)	1-1 (2nd)
<u>2011-12</u>	
Las Vegas Holiday Hoops Classic (Las Vegas, NV)	2-0 (1st)

YEAR-BY-YEAR RESULTS

1986-87 (11-16, Ind.)

Coach Mike Petersen

Date	Opponent	W/L	Score
11/28	at Portland State	L	75-84
12/5	% Portland State	W	60-52
12/6	% Washington State	L	63-75
12/12	# CONCORDIA (Ore)	W	74-56
12/13	# OREGON	L	67-83
12/20	HAWAII	L	62-66
12/22	at Washington	L	59-94
12/30	at Idaho	L	49-51
1/5	at San Diego	W	64-60
1/7	at California Lutheran	W	93-45
1/8	MONTANA STATE	W	63-59
1/10	MONTANA	L	43-61
1/13	WHITWORTH	W	61-43
1/23	CENTRAL WASHINGTON	W	74-49
1/29	BOISE STATE	W	61-51
2/4	WASHINGTON STATE	L	58-68
2/7	at Montana State	L	47-65
2/8	at Montana	L	54-69
2/10	at Eastern Washington	L	56-89
2/13	PORTLAND STATE	L	65-67
2/14	PORTLAND	W	72-62
2/20	WEBER STATE	W	62-51
2/21	IDAHO STATE	L	62-64
2/25	at Portland	L	66-70
2/27	^ New Orleans	L	55-67
2/28	^ Miami, Fla	L	52-79
2/29	^ Radford	W	70-67
% Dial Classic (Pullman, WA)			
# Bulldog Invitational (Spokane, WA)			
^ Northern Lights Invitational (Anchorage, AK)			

1987-88 (18-9 / 11-3 (1st) in WCC)

Coach Mike Petersen

Date	Opponent	W/L	Score
11/27	at Oregon	L	55-70
12/1	CENTRAL WASHINGTON	W	70-60
12/4	# Eastern Washington	L	61-71
12/5	# Idaho	W	66-51
12/8	at Whitworth	W	75-57
12/12	LEWIS-CLARK STATE	W	68-57
12/19	at Northwest Nazarene	W	78-48
12/21	at Boise State	L	59-63
12/30	at Washington State	L	50-74
1/3	PORTLAND STATE	W	65-61
1/4	MONTANA	L	58-73
1/6	at Idaho	W	57-54
1/9	WASHINGTON	L	42-65
1/14	* SAN FRANCISCO	W	57-36
1/16	* SANTA CLARA	W	59-45
1/22	* at Pepperdine	W	60-59
1/23	* at Loyola Marymount	W	56-55
1/28	* LOYOLA MARYMOUNT	W	66-52
1/30	* PEPPERDINE	W	63-59
2/4	* at San Diego	W	69-67
2/6	* at Saint Mary's	L	63-79
2/11	* SAINT MARY'S	W	77-56
2/13	* SAN DIEGO	W	77-59
2/17	* PORTLAND	W	73-55
2/20	* at Portland	L	51-54
2/26	* at Santa Clara	W	63-56
2/27	* at San Francisco	L	47-62
* WCC Game			
# Wheatland Classic (Cheney, WA)			

1988-89 (15-13 / 11-3 (2nd) in WCC)

Coach Mike Petersen

Date	Opponent	W/L	Score
11/20	# Southern Utah	L	57-66
11/21	# Portland State	W	59-57
11/30	CENTRAL WASHINGTON	W	69-72
12/1	+ MONTANA STATE	W	59-51
12/3	+ BOISE STATE	L	59-65
12/9	^ Washington State	L	52-79
12/10	^ Eastern Washington	L	40-45
12/17	ST. MARTINS	W	102-46
12/19	IDAHO	L	51-53
12/20	LEWIS-CLARK STATE	W	70-39
12/27	at Washington	L	49-69
12/31	at Montana State	L	47-50
1/2	at Montana	L	54-74
1/13	* SAN DIEGO	W	69-65 (ot)
1/14	* SAINT MARY'S	W	88-74
1/20	* at Loyola Marymount	L	62-67 (ot)
1/21	* at Pepperdine	W	71-50
1/25	* PORTLAND	W	55-48
1/28	* at Portland	W	56-45
2/3	* SANTA CLARA	W	72-46
2/4	* SAN FRANCISCO	W	64-50
2/10	* at San Francisco	W	51-46
2/11	* at Santa Clara	W	55-51
2/17	* PEPPERDINE	W	59-48
2/18	* LOYOLA MARYMOUNT	L	59-65
2/24	* at Saint Mary's	W	68-58
2/28	* at San Diego	L	46-51
* WCC Game			
# Boise State Tournament (Boise, ID)			
+ Zip's Bulldog Invite (Spokane, WA)			
^ Wheatland Classic (Cheney, WA)			

1989-90 (10-17 / 5-9 (5th) in WCC)

Coach Julie Holt

Date	Opponent	W/L	Score
11/24	# Wyoming	L	60-69
11/25	# Texas Christian	W	72-65
11/28	CENTRAL WASHINGTON	W	73-57
12/5	WASHINGTON	L	45-70
12/8	+ IDAHO	L	51-61
12/9	+ EASTERN WASHINGTON	L	69-74
12/10	COLORADO	L	41-58
12/17	MONTANA	L	44-57
12/29	at Oregon	L	40-64
1/2	PORTLAND STATE	W	65-64
1/3	WARNER PACIFIC	W	88-54
1/12	* at Saint Mary's	L	64-83
1/13	* at San Francisco	L	55-56
1/15	at Boise State	L	48-79
1/18	* LOYOLA MARYMOUNT	L	66-70 (ot)
1/20	* PEPPERDINE	W	76-66
1/23	LEWIS-CLARK STATE	W	61-56
1/26	* at Pepperdine	W	83-76 (ot)
1/27	* at Loyola Marymount	L	56-63
2/1	* SANTA CLARA	W	59-45
2/3	* SAN DIEGO	L	54-62
2/8	* at San Diego	L	56-76
2/10	* at Santa Clara	L	56-61
2/14	* PORTLAND	W	83-52
2/17	* at Portland	L	65-76
2/22	* SAN FRANCISCO	W	70-65
2/24	* SAINT MARY'S	L	64-67
* WCC Game			
# Mark IV Classic (Moscow, ID)			
+ Wheatland Classic (Spokane, WA)			

1990-91 (13-15 / 7-7 (4th) in WCC)

Coach Julie Holt

Date	Opponent	W/L	Score
11/23	# Colorado	L	59-87
11/24	# Wisconsin	L	77-80
11/27	CENTRAL WASHINGTON	W	87-58
11/29	at Montana	L	46-96
11/30	at Montana State	L	48-65
12/2	OREGON	L	60-74
12/7	+ Eastern Washington	W	72-55
12/8	+ Washington State	L	59-70
12/15	IDAHO	W	71-67
12/17	EASTERN WASHINGTON	W	68-61
12/28	at Washington	L	32-91
1/3	at Portland State	L	62-79
1/6	at Boise State	W	49-47
1/11	* at Saint Mary's	L	78-92
1/12	* at San Francisco	L	72-83
1/16	* PORTLAND	W	89-58
1/19	* at Portland	W	75-62
1/24	* SANTA CLARA	L	60-65
1/26	* SAN DIEGO	L	61-65
1/31	* at San Diego	L	72-77
2/2	* at Santa Clara	L	60-78
2/4	at Eastern Washington	W	78-68
2/7	* LOYOLA MARYMOUNT	W	81-60
2/9	* PEPPERDINE	W	92-84 (ot)
2/15	* at Pepperdine	L	54-78
2/16	* at Loyola Marymount	W	66-59
2/21	* SAN FRANCISCO	W	66-56
2/23	* SAINT MARY'S	W	73-61
* WCC Game			
# Coors Classic (Boulder, CO)			
+ Wheatland Classic (Pullman, WA)			

1991-92 (8-19 / 5-9 (6th) in WCC)

Coach Julie Holt

Date	Opponent	W/L	Score
11/22	+ Washington State	L	37-88
11/23	+ Idaho	L	42-69
11/29	# Cal-State Fullerton	L	57-80
11/30	# San Diego State	L	54-69
12/5	at Eastern Washington	W	73-71
12/7	CENTRAL WASHINGTON	W	97-60
12/9	WASHINGTON	L	67-73 (ot)
12/14	MONTANA	L	55-76
12/20	at Idaho	L	67-83
1/2	PORTLAND STATE	L	58-91
1/6	WHITWORTH	W	72-64 (ot)
1/8	BOISE STATE	L	80-84
1/11	MONTANA STATE	L	43-56
1/16	* PEPPERDINE	L	60-73
1/18	* LOYOLA MARYMOUNT	W	77-55
1/23	* at Santa Clara	L	61-83
1/25	* at San Diego	W	66-65
1/29	* PORTLAND	L	86-91
2/1	* at Portland	L	80-82
2/6	* SAINT MARY'S	W	73-65
2/8	* SAN FRANCISCO	W	66-59
2/14	* at San Francisco	L	43-68
2/15	* at Saint Mary's	L	53-79
2/20	* SAN DIEGO	L	56-70
2/22	* SANTA CLARA	L	50-63
2/28	* at Loyola Marymount	W	75-63
2/29	* at Pepperdine	L	59-97
* WCC Game			
+ Wheatland Classic (Cheney, WA)			
# Titan Classic (Fullerton, CA)			

YEAR-BY-YEAR RESULTS

WWW.GOZAGS.COM

1992-93 (11-15 / 6-8 (T4th) in WCC)

Coach Julie Holt

Date	Opponent	W/L	Score
12/1	CENTRAL WASHINGTON	W	67-43
12/4	# Missouri-Kansas City	L	53-67
12/5	# Nevada	W	66-63
12/8	WHITWORTH	W	95-66
12/10	WASHINGTON STATE	W	71-69
12/12	IDAHO	L	72-76
12/14	EASTERN WASHINGTON	W	69-54
12/19	at Montana State	L	71-80
12/20	at Montana	L	52-68
1/5	at Washington	L	64-94
1/9	at Boise State	L	69-75
1/11	at Eastern Washington	L	69-70
1/15	* at Pepperdine	L	72-93
1/16	* at Loyola Marymount	L	56-71
1/21	* SANTA CLARA	W	71-68
1/23	* SAN DIEGO	W	55-53
1/27	* PORTLAND	W	88-77
1/30	* at Portland	L	70-72
2/5	* at Saint Mary's	L	61-76
2/6	* at San Francisco	L	58-80
2/11	* SAN FRANCISCO	W	88-69
2/13	* SAINT MARY'S	W	87-71
2/18	* at San Diego	L	62-87
2/20	* at Santa Clara	L	59-72
2/25	* LOYOLA MARYMOUNT	W	65-59
2/27	* PEPPERDINE	L	67-70

* WCC Game

Thanksgiving Classic (Moscow, ID)

1993-94 (21-10 / 10-4 (2nd) in WCC)

Coach Julie Holt

Date	Opponent	W/L	Score
11/28	at Idaho	W	88-62
12/1	WHITWORTH	W	72-55
12/7	LEWIS-CLARK STATE	W	85-81
12/10	EASTERN WASHINGTON	W	66-61
12/11	at Washington State	L	60-69
12/18	at Washington	L	40-63
12/29	# Brigham Young	W	75-67
12/30	# Mississippi	W	66-62
1/4	MONTANA STATE	W	62-44
1/6	MONTANA	W	70-62
1/10	at Eastern Washington	W	68-58
1/11	at San Diego State	L	54-69
1/13	* at San Diego	L	69-91
1/15	* at San Francisco	L	63-73
1/20	* SANTA CLARA	W	79-73
1/22	* SAINT MARY'S	W	80-52
1/28	* at Saint Mary's	W	54-53
1/29	* at Santa Clara	L	68-78
2/3	* LOYOLA MARYMOUNT	W	73-53
2/5	* PEPPERDINE	W	70-62
2/11	* at Pepperdine	W	70-69
2/12	* at Loyola Marymount	L	62-66
2/16	* PORTLAND	W	84-67
2/19	* at Portland	W	74-64
2/24	* SAN FRANCISCO	W	83-68
2/26	* SAN DIEGO	W	73-62
3/10	+ Saint Mary's	W	84-66
3/11	+ Portland	L	65-73
3/24	^ Pittsburgh	L	77-89
3/25	^ New Mexico State	L	63-83
3/26	^ Northeast Louisiana	W	105-69

* WCC Game

+ WCC Tournament (Santa Clara, CA)

BYU Holiday Classic (Provo, UT)

^ WNIT (Amarillo, TX)

1994-95 (9-17 / 4-10 (T6th) in WCC)

Coach Kellee Barney

Date	Opponent	W/L	Score
11/28	at Eastern Washington	W	70-58
12/2	# Memphis	W	80-78
12/3	# Oregon State	L	61-76
12/6	BOISE STATE	L	71-76
12/8	IDAHO	W	72-58
12/10	WASHINGTON STATE	L	65-74
12/17	WHITWORTH	W	67-54
12/21	at Washington	L	59-88
1/3	at Montana State	L	67-69
1/4	at Montana	L	42-72
1/7	EASTERN WASHINGTON	W	71-62
1/12	* SAN DIEGO	W	77-64 (ot)
1/14	* SAN FRANCISCO	L	77-83 (ot)
1/20	* at Santa Clara	L	68-81
1/21	* at Saint Mary's	L	47-58
1/26	* SAINT MARY'S	W	82-75 (ot)
1/28	* SANTA CLARA	L	62-71
2/3	* at Loyola Marymount	L	68-86
2/4	* at Pepperdine	L	80-85
2/9	* PEPPERDINE	W	63-62
2/11	* LOYOLA MARYMOUNT	W	80-66
2/15	* PORTLAND	L	48-60
2/18	* at Portland	L	67-89
2/23	* at San Francisco	L	77-93
2/25	* at San Diego	L	71-72
3/2	+ Portland	L	73-79

* WCC Game

+ WCC Tournament

Gazette Times Classic (Corvallis, OR)

1995-96 (4-23 / 2-12 (8th) in WCC)

Coach Kellee Barney

Date	Opponent	W/L	Score
11/24	# Nebraska	L	40-87
11/25	# James Madison	L	66-72
11/28	at Idaho	W	62-58
11/30	at Eastern Washington	L	50-60
12/6	WASHINGTON	L	55-71
12/8	UTAH	L	59-89
12/11	MONTANA	L	56-57
12/18	SAN DIEGO STATE	L	59-78
12/28	IDAHO STATE	L	63-67
12/31	at Boise State	L	82-86
1/2	at Oregon	L	45-83
1/6	EASTERN WASHINGTON	W	73-62
1/11	* SANTA CLARA	L	69-79
1/13	* SAINT MARY'S	W	88-78
1/18	* at San Diego	L	55-78
1/20	* at San Francisco	L	54-76
1/24	* PORTLAND	L	61-82
1/27	* at Portland	L	56-96
2/1	* LOYOLA MARYMOUNT	L	63-71
2/3	* PEPPERDINE	L	69-81
2/9	* at Pepperdine	L	60-89
2/10	* at Loyola Marymount	L	57-72
2/15	* SAN FRANCISCO	L	46-52
2/17	* SAN DIEGO	W	68-57
2/23	* at Saint Mary's	L	63-74
2/24	* at Santa Clara	L	75-87
2/29	+ Portland	L	60-77

* WCC Game

+ WCC Tournament (Santa Clara, CA)

Cablevision Classic (Lincoln, NE)

1996-97 (4-23 / 2-12 (7th) in WCC)

Coach Kellee Barney

Date	Opponent	W/L	Score
11/22	# Idaho State	W	58-56
11/23	# Navy	L	55-58
11/26	at Eastern Washington	L	69-83
11/30	^ Washington State	L	55-85
12/3	at Montana	L	66-81
12/6	& Weber State	L	67-73
12/7	& Fresno State	L	53-73
12/10	at Washington	L	45-74
12/14	OREGON	L	33-52
12/28	at Utah	L	60-90
1/2	IDAHO	W	57-55
1/4	BOISE STATE	L	45-76
1/10	* at Santa Clara	L	40-84
1/11	* at Saint Mary's	L	54-87
1/16	* SAN DIEGO	W	54-47
1/18	* SAN FRANCISCO	L	41-54
1/24	* at Loyola Marymount	L	62-66 (ot)
1/25	* at Pepperdine	L	41-86
1/30	* PEPPERDINE	L	56-72
2/1	* LOYOLA MARYMOUNT	W	79-74
2/5	* PORTLAND	L	63-77
2/8	* at Portland	L	67-88
2/13	* at San Francisco	L	47-76
2/15	* at San Diego	L	56-60
2/20	* SAINT MARY'S	L	51-70
2/22	* SANTA CLARA	L	44-84
2/27	+ San Francisco	L	49-86

* WCC Game

+ WCC Tournament (Los Angeles, CA)

Gate City Shootout (Pocatello, ID)

^ Played at Spokane Arena (Spokane, WA)

& Dial Classic (Pullman, WA)

1997-98 (11-16 / 3-11 (7th) in WCC)

Coach Kellee Barney

Date	Opponent	W/L	Score
11/20	EASTERN WASHINGTON	W	87-46
11/26	at Eastern Washington	W	73-57
11/28	WASHINGTON STATE	L	59-78
12/2	MONTANA STATE	L	68-73
12/6	at Cal Poly	W	83-73
12/9	WASHINGTON	L	67-77
12/13	CONCORDIA (Ore)	W	96-57
12/15	MONTANA	W	68-65
12/19	at Idaho	W	75-73
12/29	at Weber State	W	83-80
1/2	WESTERN BAPTIST	W	89-47
1/6	at Boise State	L	65-75
1/8	* LOYOLA MARYMOUNT	W	71-59
1/10	* PEPPERDINE	L	81-84
1/15	* at San Diego	L	62-68
1/17	* at Saint Mary's	L	64-81
1/22	* SAINT MARY'S	L	63-88
1/24	* SAN DIEGO	L	50-57
1/30	* at San Francisco	L	57-75
1/31	* at Santa Clara	L	58-98
2/5	* SANTA CLARA	W	72-71
2/7	* SAN FRANCISCO	L	53-56
2/11	* PORTLAND	L	50-79
2/14	* at Portland	L	57-71
2/20	* at Pepperdine	L	59-79
2/21	* at Loyola Marymount	W	72-62
2/26	+ Pepperdine	L	56-75

* WCC Game

+ WCC Tournament (Santa Clara, CA)

YEAR-BY-YEAR RESULTS

1998-99 (8-19 / 4-10 (T6th) in WCC)

Coach Kellee Barney			
Date	Opponent	W/L	Score
11/13	at Montana State	L	49-58
11/16	at Montana	L	63-79
11/20	EASTERN WASHINGTON	W	59-57
11/24	at Washington	L	57-92
11/29	BOISE STATE	L	49-68
12/5	# Arizona State	L	52-96
12/6	# Pacific	W	65-64
12/12	WEBER STATE	W	71-61
12/18	at Washington State	L	70-75
12/20	at Eastern Washington	L	63-65
12/30	CAL POLY	L	55-60
1/2	IDAHO	W	87-81
1/8	* at Loyola Marymount	L	57-64
1/9	* at Pepperdine	L	49-75
1/13	* PORTLAND	W	77-65
1/16	* at Portland	L	59-75
1/21	* SAN FRANCISCO	W	63-59
1/23	* SANTA CLARA	L	57-79
1/29	* at Santa Clara	L	64-79
1/30	* at San Francisco	L	70-88
2/4	* SAN DIEGO	W	64-48
2/6	* SAINT MARY'S	L	44-69
2/11	* at Saint Mary's	L	55-79
2/13	* at San Diego	L	54-72
2/18	* PEPPERDINE	L	64-77
2/20	* LOYOLA MARYMOUNT	W	69-57
2/25	+ Santa Clara	L	42-69
* WCC Game			
+ WCC Tournament (Santa Clara, CA)			
# Wells Fargo Classic (Tempe, AZ)			

2000-01 (5-23 / 0-14 (8th) in WCC)

Coach Kelly Graves			
Date	Opponent	W/L	Score
11/18	BOISE STATE	W	72-60
11/22	at Cal Poly	L	51-60
11/24	# Tennessee-Chattanooga	L	60-72
11/25	# Illinois State	W	64-55
11/29	EASTERN WASHINGTON	L	57-59
12/2	BRIGHAM YOUNG	L	57-74
12/5	MONTANA STATE	L	47-61
12/7	UC RIVERSIDE	W	73-67
12/17	at Washington State	L	56-74
12/20	at Montana	W	74-73
12/22	at Montana State	L	47-68
12/30	at Sacramento State	L	58-71
1/2	& COLGATE	W	67-56
1/11	* SAN FRANCISCO	L	52-72
1/13	* SAINT MARY'S	L	36-62
1/18	* PORTLAND	L	53-54
1/21	* at Portland	L	40-52
1/25	* at San Diego	L	55-81
1/27	* at Santa Clara	L	48-74
2/1	* PEPPERDINE	L	56-61
2/3	* LOYOLA MARYMOUNT	L	58-62
2/9	* at Saint Mary's	L	50-63
2/10	* at San Francisco	L	60-88
2/16	* at Loyola Marymount	L	37-60
2/17	* at Pepperdine	L	55-78
2/22	* SANTA CLARA	L	54-70
2/24	* SAN DIEGO	L	80-84
3/1	+ Saint Mary's	L	59-84
* WCC Game			
+ WCC Tournament (San Diego, CA)			
# Pacific Bell Classic (San Diego, CA)			
& Played at Spokane Arena			

2002-03 (18-12 / 9-5 (T2nd) in WCC)

Coach Kelly Graves			
Date	Opponent	W/L	Score
11/22	at Oregon	L	72-83
11/25	MONTANA STATE NORTHERN	W	76-51
11/29	# at Hawai'i	L	61-71
11/30	# Denver	L	43-62
12/1	# Fordham	L	69-74
12/5	TEXAS PAN AMERICAN	W	71-55
12/7	SAN JOSE STATE	W	65-54
12/11	WASHINGTON STATE	W	77-57
12/15	WHITWORTH	W	85-36
12/12	WEBER STATE	L	49-52
12/29	BOISE STATE	W	82-55
12/31	at Cal State Fullerton	W	75-57
1/2	at UC Riverside	W	64-55
1/5	at Montana	L	68-73
1/8	EASTERN WASHINGTON	W	71-64
1/10	* at Pepperdine	L	63-78
1/11	* at Loyola Marymount	L	42-58
1/16	* SAN FRANCISCO	W	59-47
1/18	* SAINT MARY'S	W	67-53
1/25	* PORTLAND	W	72-59
1/30	* at San Diego	W	67-58
2/1	* at Santa Clara	L	41-65
2/6	* LOYOLA MARYMOUNT	W	67-64
2/8	* PEPPERDINE	L	60-66
2/14	* at Saint Mary's	W	67-43
2/15	* at San Francisco	L	57-59
2/22	* at Portland	W	64-50
2/27	* SANTA CLARA	W	69-53
3/1	* SAN DIEGO	W	86-72
3/8	+ Santa Clara	L	59-60 (ot)
* WCC Game			
+ WCC Tournament (San Diego, CA)			
# Rainbow Wahine Classic (Honolulu, HI)			

1999-2000 (9-19 / 2-12 (8th) in WCC)

Coach Kellee Barney			
Date	Opponent	W/L	Score
11/21	at San Jose State	W	82-65
11/23	at Pacific	L	70-84
11/26	at Brigham Young	L	58-77
11/30	at Eastern Washington	W	61-44
12/3	# American	L	64-65 (ot)
12/4	# Texas Southern	W	74-52
12/8	WASHINGTON STATE	W	82-66
12/12	MONTANA	W	43-41
12/17	EASTERN WASHINGTON	W	58-57
12/21	CAL POLY	W	70-48
12/30	UC-SANTA BARBARA	L	58-76
1/5	at Boise State	L	56-69
1/8	at Idaho	L	67-73
1/14	* at San Francisco	W	76-71
1/15	* at Santa Clara	L	66-98
1/20	* SAINT MARY'S	L	36-69
1/22	* SAN DIEGO	L	57-60
1/26	* PORTLAND	W	71-53
1/29	* at Portland	L	62-64
2/4	* at Pepperdine	L	67-89
2/5	* at Loyola Marymount	L	73-94
2/10	* LOYOLA MARYMOUNT	L	59-74
2/12	* PEPPERDINE	L	68-74
2/17	* at San Diego	L	64-77
2/19	* at Saint Mary's	L	68-76
2/24	* SANTA CLARA	L	71-84
2/26	* SAN FRANCISCO	L	70-76
3/2	+ Pepperdine	L	71-82
* WCC Game			
+ WCC Tournament (Santa Clara, CA)			
# SW Airlines Lobo Classic (Albuquerque, NM)			

2001-02 (11-18 / 2-12 (8th) in WCC)

Coach Kelly Graves			
Date	Opponent	W/L	Score
11/16	# New Mexico State	L	71-78
11/17	# at Idaho State	W	83-68
11/20	& at Alaska Anchorage	W	98-45
11/21	& Iowa	L	73-90
11/24	PACIFIC	L	85-86 (ot)
11/29	at Washington State	L	72-80
12/1	SAINT MARTIN'S	W	79-51
12/4	at Eastern Washington	W	69-64
12/6	WHITWORTH	W	65-54
12/8	CAL STATE FULLERTON	W	89-48
12/14	at Boise State	L	59-71
12/31	at UC Riverside	W	75-64
1/2	at Sacramento State	W	89-55
1/5	MONTANA	W	57-50
1/10	* at Santa Clara	L	69-99
1/12	* at San Diego	W	75-65 (ot)
1/17	* PEPPERDINE	L	69-77
1/19	* LOYOLA MARYMOUNT	L	74-76 (ot)
1/25	* at San Francisco	L	58-73
1/26	* at Saint Mary's	L	49-69
1/31	* PORTLAND	L	59-62
2/3	* at Portland	W	71-65
2/7	* SAN DIEGO	L	48-63
2/9	* SANTA CLARA	L	75-81
2/15	* at Loyola Marymount	L	49-63
2/16	* at Pepperdine	L	66-73
2/21	* SAINT MARY'S	L	64-73
2/23	* SAN FRANCISCO	L	67-72
2/28	+ Pepperdine	L	64-68
* WCC Game			
+ WCC Tournament (San Diego, CA)			
# American Dream Classic (Pocatello, ID)			
& Great Alaska Shootout (Anchorage, AK)			

2003-04 (18-12 / 10-4 (T2nd) in WCC)

Coach Kelly Graves			
Date	Opponent	W/L	Score
11/21	# Houston	L	54-66
11/22	# Butler	W	65-59
11/25	OREGON	L	57-73
11/28	& at Washington	L	56-70
11/29	& Yale	W	69-48
12/4	at Utah	L	64-88
12/6	at Weber State	L	54-72
12/10	BOISE STATE	W	75-54
12/12	at Portland State	W	69-61
12/14	UC RIVERSIDE	W	68-54
12/29	SEATTLE UNIVERSITY	W	76-40
12/31	! Eastern Washington	L	69-72
1/4	MONTANA	W	60-52
1/8	* PEPPERDINE	W	75-44
1/10	* LOYOLA MARYMOUNT	W	70-54
1/15	* at San Francisco	W	72-61 (ot)
1/17	* at Saint Mary's	L	48-60
1/24	* PORTLAND	W	64-55
1/29	* SANTA CLARA	W	77-69
1/31	* SAN DIEGO	W	61-58
2/5	* at Loyola Marymount	L	58-70
2/7	* at Pepperdine	L	62-73
2/12	* SAINT MARY'S	W	68-45
2/15	* SAN FRANCISCO	L	53-59
2/21	* at Portland	W	83-71
2/26	* at Santa Clara	W	80-67
2/28	* at San Diego	W	55-53
3/6	+ Pepperdine	W	66-64 (ot)
3/7	+ Loyola Marymount	L	58-61
3/19	\$ at Oregon State	L	64-69
* WCC Game			
+ WCC Tournament (Santa Clara, CA)			
# Hawkeye Challenge (Iowa City, IA)			
& Seattle Times Classic (Seattle, WA)			
\$ Women's NIT (Corvallis, OR)			

YEAR-BY-YEAR RESULTS

2010-11 (31-5 / 14-0 (1st) in WCC)

Coach Kelly Graves

Date	Opponent	W/L	Score
11/12	at USC	L	73-79
11/14	WHITMAN	W	114-40
11/21	STANFORD	L	78-84
11/23	at North Dakota	W	83-45
11/26	@ Mississippi	L	52-53
11/27	@ North Carolina Central	W	94-52
11/28	@ Washington State	W	67-65
12/3	at Eastern Washington	W	101-74
12/5	at Montana	W	80-62
12/11	WASHINGTON STATE	W	80-62
12/17	IDAHO	W	93-75
12/21	BYU	W	91-64
12/23	CAL STATE FULLERTON	W	101-52
12/29	+ Notre Dame	L	61-70
12/30	+ at Seattle	W	91-64
1/3	SOUTHERN UTAH	W	102-61
1/8	* at Portland	W	81-55
1/13	* at Pepperdine	W	80-61
1/15	* at Loyola Marymount	W	65-59
1/20	* SANTA CLARA	W	89-53
1/22	* SAN FRANCISCO	W	97-60
1/27	* at Saint Mary's	W	106-77
1/29	* at San Diego	W	70-49
2/4	* PORTLAND	W	87-67
2/10	* LOYOLA MARYMOUNT	W	82-42
2/12	* PEPPERDINE	W	73-59
2/17	* at Santa Clara	W	93-65
2/19	* at San Francisco	W	103-59
2/24	* SAINT MARY'S	W	106-66
2/26	* SAN DIEGO	W	80-58
3/6	# Portland	W	96-71
3/7	# Saint Mary's	W	72-46
3/19	^ IOWA	W	92-86
3/21	^ UCLA	W	89-75
3/26	! Louisville	W	76-69
3/28	& Stanford	L	60-83

@Rainbow Wahine Showdown (Honolulu, HI)

+Holiday Hoops Classic (Seattle, WA)

*WCC Game

#WCC Tournament (Las Vegas, NV)

^NCAA First & Second Rounds (Spokane, WA)

!NCAA Regional Semifinal (Spokane, WA)

&NCAA Regional Final (Spokane, WA)

2011-12 (28-6 / 14-2 (1st) in WCC)

Coach Kelly Graves

Date	Opponent	W/L	Score
11/11	HOFSTRA	W	101-88
11/13	Stanford	L	61-76
11/17	Idaho	W	91-42
11/27	PORTLAND STATE	W	99-69
11/30	Washington State	W	71-69
12/2	Cal State Fullerton	W	73-60
12/4	USC	L	51-58
12/9	EASTERN WASHINGTON	W	75-69
12/11	MONTANA	W	70-54
12/17	UC RIVERSIDE	W	83-56
12/19	+ Georgia	W	71-68
12/21	+ Dayton	W	82-76
12/29	* Portland	W	80-65
1/1	Saint Francis	W	87-52
1/5	* Pepperdine	W	79-50
1/7	* Loyola Marymount	W	80-54
1/12	* SAN FRANCISCO	W	87-52
1/14	* SAINT MARY'S	L	63-66
1/19	* Santa Clara	W	81-68
1/21	* San Diego	W	54-44
1/26	* LOYOLA MARYMOUNT	W	79-61
1/28	* Saint Mary's	W	75-70
2/2	* PORTLAND	W	77-56
2/4	* SAN DIEGO	W	69-58
2/9	* BYU	L	40-70
2/11	* San Francisco	W	79-59
2/16	* SANTA CLARA	W	87-55
2/18	* PEPPERDINE	W	66-40
2/25	* BYU	W	77-60
3/3	^ Saint Mary's	W	83-78
3/5	^ BYU	L	66-78
3/17	! RUTGERS	W	86-73
3/19	! MIAMI	W	65-54
3/25	& Kentucky	L	62-79

+Las Vegas Holiday Hoops Classic (Las Vegas, NV)

*WCC Game

^WCC Tournament (Las Vegas, NV)

!NCAA First & Second Rounds (Spokane, WA)

& NCAA Regional Semifinal (Kingston, RI)

WCC TOURNAMENT RESULTS

1994 at Santa Clara

#2 Gonzaga	84
#3 Saint Mary's	66
#4 Portland	73
#2 Gonzaga	65

1995 at Santa Clara

#2 Portland	79
#7 Gonzaga	73

1996 at Santa Clara

#1 Portland	77
#8 Gonzaga	60

1997 at Loyola Marymount

#2 San Francisco	86
#7 Gonzaga	49

1998 at Santa Clara

#2 Pepperdine	75
#7 Gonzaga	56

1999 at Santa Clara

#2 Santa Clara	69
#7 Gonzaga	42

2000 at Santa Clara

#1 Pepperdine	82
#8 Gonzaga	71

2001 at San Diego

#1 Saint Mary's	84
#8 Gonzaga	59

2002 at San Diego

#1 Pepperdine	68
#8 Gonzaga	64

2003 at San Diego

#3 Santa Clara	60
#2 Gonzaga	59 (ot)

2004 at Santa Clara

#2 Gonzaga	66
#3 Pepperdine	64 (ot)

#1 Loyola Marymount	61
#2 Gonzaga	58

2005 at Santa Clara

#1 Gonzaga	77
#8 Portland	42

#1 Gonzaga	58
#4 Pepperdine	40
#3 Santa Clara	77
#1 Gonzaga	66

2006 at Gonzaga

#1 Gonzaga	67
#8 San Francisco	75

2007 at Portland

#1 Gonzaga	68
#8 Portland	55
#1 Gonzaga	59
#7 San Francisco	38

#1 Gonzaga	64
#3 Loyola Marymount	47

2008 at San Diego

#1 Gonzaga	77
#8 Pepperdine	67

#1 Gonzaga	81
#5 Saint Mary's	64

#1 Gonzaga	66
#3 San Diego	70

2009 in Las Vegas, NV

#1 Gonzaga	74
#4 Loyola Marymount	63

#1 Gonzaga	66
#6 San Diego	55

2010 in Las Vegas, NV

#1 Gonzaga	87
#8 Santa Clara	47

#1 Gonzaga	76
#3 Pepperdine	48

2011 in Las Vegas, NV

#1 Gonzaga	97
#4 Portland	71

#1 Gonzaga	72
#2 Saint Mary's	46

2012 in Las Vegas, NV

#1 Gonzaga	83
#4 Saint Mary's	78

#1 Gonzaga	66
#2 BYU	78

WCC Tournament Champions

2012	BYU
2011	GONZAGA
2010	GONZAGA
2009	GONZAGA
2008	San Diego
2007	GONZAGA
2006	Pepperdine
2005	Santa Clara
2004	Loyola Marymount
2003	Pepperdine
2002	Pepperdine
2001	Saint Mary's
2000	San Diego
1999	Saint Mary's
1998	Santa Clara
1997	San Francisco
1996	San Francisco
1995	San Francisco
1994	Portland
1993	San Diego
1992	Santa Clara

2012 NCAA TOURNAMENT

SWEET SIXTEEN

The 2011-12 Gonzaga University women's basketball team once again took Spokane and the nation on a historic ride. The Zags made history earning their first at-large bid to the NCAA Tournament, their fourth-straight overall and fifth in six years. The Bulldogs won their unprecedented eighth-straight West Coast Conference regular-season title with a 14-2 mark but fell in the championship game of the league tournament.

Gonzaga, the No. 11 seed for the second-consecutive year, again hosted the first and second rounds of the NCAA Tournament. With two sold out and boisterous crowds behind them, the Bulldogs upset No. 6 seed Rutgers 86-73 in the First Round behind 20-plus point games by both senior Kayla Standish (23 points) and sophomore Haiden Palmer (21 points) and knocked off No. 3 Miami 65-54 in the Second Round behind a 19-point performance by Standish and a 16 point outing by fellow classmate Katelan Redmon to reach the Regional Semifinals for the third consecutive year.

After their victory over the Hurricanes, Gonzaga headed east to Kingston, R.I. for its Sweet Sixteen match up with the University of Kentucky. Their memorable ride came to an end with a 79-62 setback to No. 2 seed Kentucky.



2011 NCAA TOURNAMENT

ELITE EIGHT

The 2010-11 Gonzaga University women's basketball team took Spokane and the nation on a pretty spectacular ride. The Bulldogs, who won their seventh-straight West Coast Conference regular-season title with another perfect 14-0 mark and won their third WCC Tournament title in four years, made fans around the nation with their improbable run in the 2011 NCAA Tournament, that ended in the Elite Eight.

Gonzaga, who was seeded No. 11 in the NCAA Tournament, hosted the first and second rounds of the tournament in the McCarthy Athletic Center. With two sold out crowds behind them the Zags defeated the No. 6 seed University of Iowa 92-86 in the First Round on a 34 point performance by senior Courtney Vandersloot and a 30-point outing by junior Kayla Standish and then defeated No. 3 UCLA 89-75 in the Second Round to gain a spot in the Sweet Sixteen for the second-consecutive year. Another highlight of GU's win over the Bruins. Seeing Vandersloot become the first player in NCAA Division I history to score 2,000 points and dish out 1,000 assists in their career.

After defeating UCLA, Gonzaga had a short trip to the Spokane Arena for its Sweet Sixteen game versus No. 7 seed Louisville. With 11,000 fans backing them against the Cardinals, the Bulldogs good fortunes continued with a 76-69 victory.

The Bulldogs great run finally came to an end when No. 1 seed Stanford University used its size advantage to win the Elite Eight match-up 80-63.



SWEET SIXTEEN

The Bulldogs 2009-10 season was a historic one. Gonzaga won its unprecedented sixth-straight West Coast Conference regular-season title, earned its second-straight, and third in four years, trip to the NCAA Tournament after winning the WCC Tournament handily, and advanced to the Sweet Sixteen of the NCAA Tournament - the then-first such appearance in school history. Overall the Zags finished 29-5 overall, had a perfect 14-0 mark in conference play and No. 12 in the final Top 25 poll.

Gonzaga was seeded No. 7 in the NCAA Tournament; its highest seed in school history. It faced No. 10 University of North Carolina, a member of the Atlantic Coast Conference (ACC), in the First Round in Seattle, Wash. Senior Tiffanie Shives was a huge reason the Bulldogs pulled off the victory over the Tar Heels. Scoreless for 31 minutes, Shives scored 14 of her 16 points in a crucial 5-minute stretch of the second half, including hitting four-straight 3-pointers, the help GU hold off UNC for a wild 82-76 win. The Bulldogs' reward for winning the track meet and earning their second tournament win in school history was a rematch with No. 2 seed Texas A&M in the Second Round. The Aggies had defeated the Zags 80-76 earlier in the season in Las Vegas.

Twenty minutes in December made Gonzaga fearless in March; no one more than senior Vivian Frieson. And because of Frieson, the Bulldogs made a trip to the Regional Semifinals. Gonzaga's do-everything forward scored 23 points, including the go-ahead 12-footer with 17 seconds left, to lead the Zags to a 72-71 upset win over second-seeded Texas A&M in the Second Round. The win was Gonzaga's 20th-straight, its last loss coming to the same Aggies three months prior in Las Vegas.

The Bulldogs historic season came to an end in the Sweet Sixteen as Xavier University won a rematch of the 2009 NCAA Tournament, 74-56. Sophomore Katelan Redmon scored 14 points and junior Courtney Vandersloot dished out 11 assists in the Zags loss.



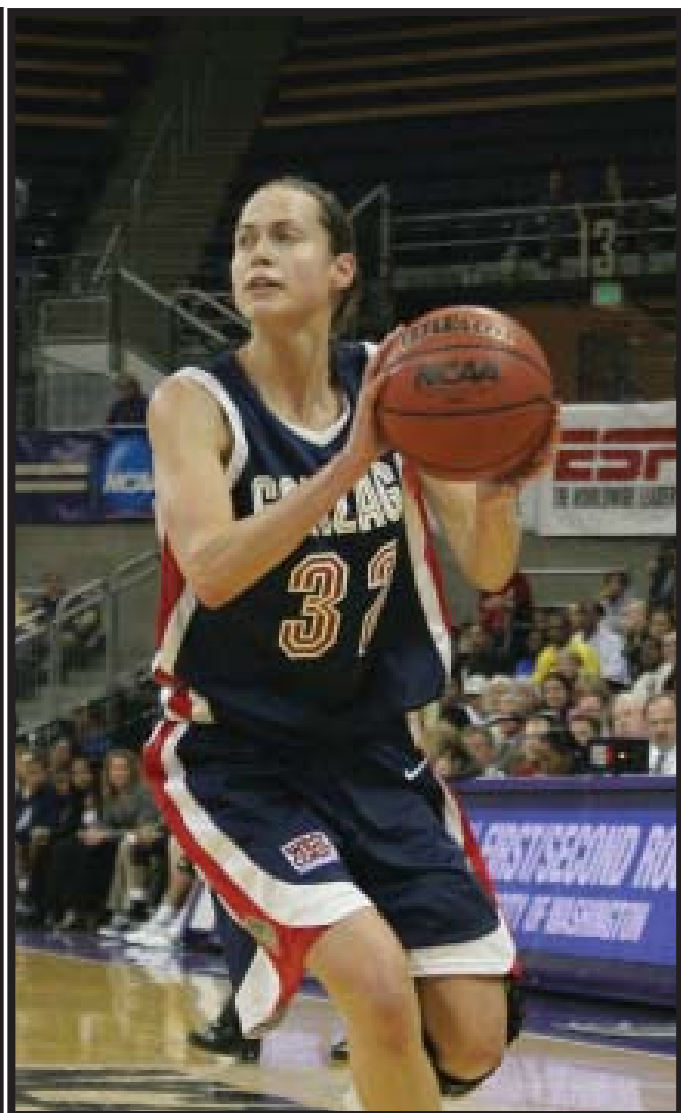
2009 NCAA TOURNAMENT

SECOND ROUND

The Bulldogs had an unprecedented year in 2008-0. Gonzaga won its fifth-straight West Coast Conference regular-season title, earned its second-ever trip to the NCAA Tournament after winning the WCC Tournament for the second time in three years and advanced to the Second Round of the NCAA Tournament for the first time in school history. Overall the Zags finished with a 27-7 mark, one win shy of tying the school record, and had a 12-2 record in conference action.

Gonzaga, seeded No. 12 in the NCAA Tournament, upset No. 5 Xavier University 74-59. Showing the savvy of an experienced tournament team - not one making just its second appearance ever - Gonzaga imposed its pace on Xavier's defense that was sixth best in the country at the time, allowing 53 points per game. Juniors Heather Bowman and Vivian Frieson, along with sophomore Courtney Vandersloot led the way for GU in their stunning First Round victory. Bowman scored a team-high 23 points, while Frieson added 17 points, three blocks and three assists. Vandersloot, the West Coast Conference Player of the Year, finished with 15 points and dished out 11 assists.

The Bulldogs battled with No. 4 Pittsburgh to the last minute but unfortunately fell to the Panthers 65-60. Vandersloot led the Bulldogs with 18 points, seven assists and seven rebounds. Bowman, the Bulldogs' leading scorer, battled her way to 15 points.



FIRST ROUND

The 2007 season is not one that will be forgotten any time soon. The Zags finally got the monkey off their backs and won their inaugural West Coast Conference Tournament Championship, earning an automatic bid to the NCAA Tournament; their first-ever appearance. Gonzaga also won its third-straight WCC regular season title with an impressive 13-1 record. Stephanie Haw was named WCC Co-Player of the Year; Heather Bowman WCC Newcomer of the Year and Kelly Graves garnered WCC Co-Coach of the Year.

The Bulldogs, who were seeded 12th in the NCAA Tournament, dropped a touch decision to Middle Tennessee State University in the first round of the NCAA Tournament hosted by Stanford University. Gonzaga was led in the game by then-senior and now current director of basketball operations Michelle (Elliott) Clark. Clark scored 17 points, hitting 4-of-5 shots and sinking 7-of-9 from the charity stripe. Kate Rid-enour added 10 points.



WNIT APPEARANCES

1987-88 WCC CHAMPIONS

In only its second year of NCAA Division I competition Gonzaga won its first West Coast Conference title posting an 11-3 record in league play. The team finished the season 18-9 overall including a seven-game win streak to open WCC play. The team was led by All-WCC performers Tammy Tibbles and Carla Curfman, both players graduating among the school's all-time leading scorers.

1993-94 WNIT Team

The Bulldogs posted a school-record 21 wins en route to the school's inaugural NCAA Division I post-season appearance. Gonzaga would go 1-2 in the WNIT Tournament in Amarillo, Texas - finishing in seventh place in the old tournament format. The team was led by first-team All-WCC selections Ivy Safranski and Juanita Rivera, both players graduating among the school's all-time leading scorers.

2003-04 WNIT Team

Gonzaga returned to the post-season for the first time in 10 years as the Bulldogs posted an 18-12 record to finish second in the WCC. Gonzaga advanced to the WCC Tournament championship game, losing by three points to regular-season champion Loyola Marymount. The Bulldogs lost in the first round of the WNIT, dropping a 69-64 decision at Oregon State. The team was led by first-team All-WCC selections Ashley Burke and Shannon Mathews, both juniors at the time.

2004-05 WCC CHAMPIONS/2005 WNIT Team

Much like the Bulldogs men's team in 1999, the Gonzaga women captured the hearts of Spokane as they made a magical run through the West Coast Conference that was capped by a second-straight post-season berth. Gonzaga ran off a 23-game win streak that was the longest in the nation ending in the WCC Tournament Championship game at Santa Clara. Along the way GU became only the second team to finish with a perfect WCC record and earned the school's first national ranking in both the Associated Press and WBCA Coaches poll. The season ended in the second round of the Women's NIT at eventual champion Southwest Missouri State. The season was also highlighted by Shannon Mathews earning WCC Player of the Year honors along with honorable mention All-America honors.

2005-06 WCC CHAMPIONS

Coming off the 2005 season that saw the Bulldogs win the WCC regular-season title after finishing 14-0, Gonzaga had its second-straight stellar year, winning its second WCC regular-season title after finishing 11-3. Both Stephanie Hawk and Ashley Anderson earned first team all-WCC honors, while Jami Bjorklund was named to the WCC all-newcomers team.

2007-08 WCC CHAMPIONS/2008 WNIT SECOND ROUND

The 2008 season didn't end like many envisioned, but it was none-the-less another successful year. The Gonzaga Bulldogs rolled through West Coast Conference action, finishing with a 13-1 overall mark to win its four-straight title. The Zags, seeded first in the WCC Tournament, fell in the finals to host San Diego. Gonzaga didn't earn a bid into the NCAA Tournament but had a spot in the WNIT. GU's season came to an end in the second round of the WNIT with a setback to the University of Colorado. Gonzaga closed out the year with a 25-9 overall record.

RECENT INDIVIDUAL BULLDOG SUCCESS

Triana Allen

2002-03 All-WCC Honorable Mention
2002-03 Gonzaga Senior Athlete of the Year

Ashley Anderson

2005-06 First Team All-WCC
2003-04 All-WCC Honorable Mention

Anne Bailey

2004-05 All-WCC Honorable Mention

Janelle Bekkering

2010-11 WCC Honorable Mention
2010-11 WCC Winter All-Academic
2010-11 Capital One Academic All-District 8
2010 Canadian National Team
2009 Canadian National Team
2008-09 WCC All-Tournament
2008-09 WCC All-Academic

Heather Bowman

2009-10 Gonzaga Senior Athlete of the Year
2009-10 WCC All-Tournament
2009-10 All-WCC
2009-10 Wooden Award Preseason List
2008-09 WCC All-Tournament
2008-09 All-WCC
2007-08 WCC Player of the Year
2007-08 All-WCC
2006-07 WCC Newcomer of the Year
2007 WCC Tournament MVP
2006-07 All-WCC
2006-07 All-WCC Freshman Team

Ashley Burke

2004-05 First Team All-WCC
2004-05 WCC All-Academic
2003-04 First Team All-WCC
2002-03 First Team All-WCC

Michelle Elliott

2007-08 Gonzaga Senior Athlete of the Year
2007-08 WCC All-Academic
2006-07 WCC All-Academic

Vivian Frieson

2009-10 WCC All-Tournament
2009-10 All-WCC
2008-09 All-WCC

Kelly Graves

2010-11 WCC Coach of the Year
2009-10 WCC Coach of the Year
2007-08 WCC Coach of the Year
2006-07 WCC Coach of the Year
2004-05 WBCA Region VIII Coach of the Year
2004-05 WCC Coach of the Year
2002-03 WCC Coach of the Year

Stephanie Hawk

2006-07 WCC Player of the Year
2006-07 AP Honorable Mention All-America
2006-07 First Team All-WCC
2007 WCC All-Tournament
2006-07 Gonzaga Senior Athlete of the Year
2006-07 WCC All-Academic
2006-07 ESPN The Magazine Academic All-District
2005-06 First Team All-WCC
2005-06 WCC All-Academic

Shannon Mathews

2004-05 WCC Player of the Year
2004-05 AP Honorable Mention All-America
2004-05 First Team All-WCC
2004-05 Gonzaga Senior Athlete of the Year
2004-05 WCC All-Academic

2003-04 First Team All-WCC

2003-04 WCC All-Academic

2002-03 All-WCC Honorable Mention

2002-03 WCC All-Academic

Haiden Palmer

2011-12 WCC Co-Newcomer of the Year
2011-12 All-WCC Honorable Mention

Katelan Redmon

2011-12 All-WCC
No. 36 Pick In 2012 WNBA Draft
2011 USA Pan American Games
2010-11 All-WCC
2009-10 WCC Newcomer of the Year

Jami Schaefer

2008-09 WCC All-Academic
2008-09 I-AAA Scholar-Athlete Team
2008-09 ESPN The Magazine Academic All-District
2007-08 WCC Defensive Player of the Year
2007-08 Honorable Mention All-WCC
2007-08 WCC All-Academic
2007-08 I-AAA Scholar-Athlete Team
2007-08 ESPN The Magazine Academic All-District
2007 WCC All-Tournament
2006-07 ESPN The Magazine Academic All-District
2005-06 All-WCC Freshman Team

Tiffanie Shives

2009-10 All-WCC Honorable Mention
2009-10 WCC All-Academic

Kayla Standish

No. 19 Pick In 2012 WNBA Draft
2012 Kingston Regional All-Tournament Team
2011-12 All-WCC
2011-12 WCC All-Tournament
2011 USA Pan American Games
2010-11 All-WCC
2010-11 WCC All-Tournament

Courtney Vandersloot

No. 3 Pick In 2011 WNBA Draft
2010-11 Frances Pomeroy Naismith Award
2010-11 WBCA State Farm All-American
2010-11 John R. Wooden All-American
2010-11 USBWA All-American
2010-11 AP All-American Honorable Mention
2010-11 Nancy Lieberman Award
2010-11 WCC Player of the Year
2010-11 WCC Tournament MVP
2010-11 All-WCC
2010-11 NCAA Tournament Spokane Regional All-Tournament
2010-11 Wade Watch Preseason List
2009-10 State Farm & AP All-America Honorable Mention
2009-10 Nancy Lieberman Award Finalist
2009-10 State Farm Wade Trophy Finalist
2009-10 John R. Wooden Award Finalist
2009-10 WCC Player of the Year
2009-10 WCC Tournament MVP
2009-10 All-WCC
2009-10 Wade Watch Preseason List
2009-10 Wooden Award Preseason List
2008-09 State Farm & AP All-America Honorable Mention
2008-09 WCC Player of the Year
2009 WCC Tournament MVP
2008-09 All-WCC
2007-08 WCC Newcomer of the Year
2007-08 All-WCC
2007-08 All-WCC Freshman Team

USA WOMEN'S NATIONAL TEAM

Gonzaga University women's basketball player and current WNBA Chicago Sky player Courtney Vandersloot was added to the 2011-12 USA Basketball Women's National Team. Vandersloot increased the USA National Team roster to 26, from which the 12-member 2012 U.S. Olympic Women's Basketball Team will be named. Player selections were made by the five-member USA Basketball Women's Basketball Women's National Team Player Selection Committee.

Vandersloot participated in the USA Women's National Team Training Camp May 10-12, 2011 in Las Vegas, Nev.



USA WORLD UNIVERSITY GAMES TEAM TRIALS



Former Gonzaga University women's basketball player Courtney Vandersloot was one of 29 players to participate in the USA Women's World University Games Team Trials in the summer of 2009. Vandersloot became the first women's player in Zag history to earn an invite to a USA Team Trial.

Kayla Standish was then invited to the 2011 USA Women's World University Games Team Trials.

Heather Bowman also received an invitation in 2009 but had to decline due to an injury she suffered weeks before the Zags season was completed.



USA PAN AMERICAN GAMES

Former Gonzaga University women's basketball players Katelan Redmon and Kayla Standish were both named to the 2011 USA Basketball Women's Pan American Games Team. The 12-member team featured 11 college athletes and one high school senior and competed Oct. 21-25 in Guadalajara, Mexico, at the 2011 Pan American Games.

The United State placed seventh at the Pan American Games after going 2-2 overall. For the tournament, Redmon averaged 20.8 minutes, 6.5 points, 7.0 rebounds, 1.8 assists and 1.0 steal while shooting 39.2 percent (11-of-28) from the field. For the tournament, Standish averaged 12.5 minutes, 2.0 points, 2.8 rebounds, and 1.0 block per contest and hit 33.3 percent (4-of-12) from the field.

Redmon and Standish became the first players in Gonzaga's women's basketball history to play internationally for the United States. Standish attended the trials for the 2011 USA World University Games team in 2011 and former Zag Courtney Vandersloot attended the same trials in 2009 but neither made the team.

Katelan Redmon



Kayla Standish



USA BASKETBALL U18 TEAM

Gonzaga University women's basketball head coach Kelly Graves was an assistant coach for the 2012 USA Basketball Women's U18 National Team.

The University of Miami head coach Kate Maier was the head coach with Graves and Nikki Caldwell of Louisiana State University acting as assistant coaches. The coaches were selected by the USA Basketball Junior National Team Committee.

Trials to select the 12-member USA squad were held May 18-21, 2012 at the U.S. Olympic Training Center (USOTC) in Colorado Springs, Colo. The team then regrouped at the ESPN Wide World of Sports Complex at the Walt Disney World Resort in Orlando, Fla., for its first training camp from May 28-June 2, 2012. The USA team then returned to the USOTC for its final training camp Aug. 3-14, prior to traveling to Puerto Rico for the FIBA Americas U18 Championship.

The U18 Women's Basketball Team won the 2012 FIBA Americas U18 Championship gold medal going 5-0 in the tournament, including a 71-47 victory over Brazil in the championship game. The gold medal marked the sixth-straight for the United States at the U18's. Since its inception in 1988, the American women have now claimed seven gold medals (1988, 2000, 2004, 2006, 2008, 2010, 2012) and two silver medals (1992, 1996) in nine tries, and are now 43-2 all-time at this event.



CANADIAN NATIONAL TEAM

Former Gonzaga University women's basketball player Janelle Bekkering was named to the 2009 Canadian Senior Women's National Team (SWNT); making her the first Bulldog to make the Canadian National squad. Bekkering, of Taber, Alberta, was one of 16 players vying for a spot on the squad.

Canada's Senior Women traveled to China June 6-14, 2009 to compete in a three-game exhibition series, followed by a visit to Cuba in August for three further exhibition games, with a final two-game tune-up in September against Brazil. The season culminated with the eight team FIBA Americas Championships for Women in Brazil where it placed third. As a top three finisher at this year's qualifying tournament, Canada clinched a spot in the 2010 FIBA World Championship in Czech Republic.

In the summer of 2010, Bekkering was once again named to the SWNT. She traveled with the team to the Czech Republic for the 2010 FIBA World Championships. She played in six of the seven games for Canada, scoring a team-high eight points in their set-back to Team USA in the second round.



PLAYING PROFESSIONALLY

Courtney Vandersloot became the first Bulldog player in school history to be drafted in the first round of the WNBA, as she was the third overall pick, taken by the Chicago Sky during the 2011 Draft at the ESPN Studios in Bristol, Conn. The Sky is a member of the Eastern Division.

Vandersloot, the first player in NCAA Division I history to score 2,000 points and dish out 1,000 assists in their career, was the second overall Zag to be drafted in the WNBA.

She was named to the WNBA All-Rookie Team at the end of the 2011 season. Vandersloot was joined on the team by Maya Moore of the Minnesota Lynx; Danielle Robinson of the San Antonio Silver Stars; Danielle Adams, also of the Silver Stars and Liz Cambage of the Tulsa Shock. Vandersloot received 10 votes. Moore, who was named Rookie of the Year, and Robinson, each received 11 votes, while Cambage and Adams each got nine.

In 2011, Vandersloot led Chicago and ranked second among rookies in assists (3.7 apg). She played in all 34 games and started 26, averaging 6.5 points. In June of 2011, Vandersloot recorded highs in points (18) and assists (10) both against the Connecticut Sun in separate games. Vandersloot was selected as a reserve for the 2011 WNBA All-Star Game.



WWW.GOZAGS.COM



PLAYING PROFESSIONALLY

VIVIAN FRIESON was selected as the 31st pick in the 2010 WNBA Draft by the Tulsa Shock, becoming the first Zag in women's basketball history to be drafted by the WNBA.

Frieson averaged 12.5 points and a team-best 7.4 rebounds while averaging 28.6 minutes per game in 2009-10. She shot an impressive 52.8 percent from the field (181-for-343). The all-around forward also contributed 70 assists, 46 steals and 45 blocks.

In GU's 2010 Sweet Sixteen NCAA Tournament run, Frieson averaged 16.0 points, 8.7 rebounds, 3.0 assists, 3.0 blocks and 2.0 steals per contest. Arguably her biggest shot of her career came with 18 seconds left in the Zags NCAA Tournament second round game versus Texas A&M that catapulted them to the 72-71 win and to their inaugural Sweet Sixteen appearance.

In her four seasons in a Bulldog uniform, Frieson averaged 8.6 points, 5.7 rebounds, 1.6 assists, 1.2 steals and 1.0 block per contest.

Frieson was let go by the Tulsa Shock during training camp and played for Kvarnby Basketball located in Mölndal, Sweden during the 2010-11 season. She played for Townsville Fire in Australia.



HEATHER BOWMAN was invited to the 2010 Seattle Storm training camp.

Bowman became the second Zag in school history to be invited to a WNBA training camp as fellow classmate Vivian Frieson was drafted by the Tulsa Shock in the third round of the 2010 draft.

Bowman ended her career as one of the most prolific players in Gonzaga and West Coast Conference history. The GU and WCC career scoring leader with 2,165 points was also a four-time All-WCC honoree, four-time WCC All-Tournament member, the 2007 WCC Newcomer of the Year and the 2008 WCC Player of the Year. She averaged 16.8 points, 6.8 rebounds, 1.2 steals and 1.0 assist per contest over her four-year career.

Bowman was released from her Seattle Storm contract and played basketball for Riva Basketball Club, located in the southernmost region of Switzerland during the 2010-11 season. She went on to play for Frankston Blues in Australia. She now is an assistant women's basketball coach at Whitworth University.



PLAYING PROFESSIONALLY

KAYLA STANDISH was selected as the 19th pick in the 2012 WNBA Draft by the Minnesota Lynx Monday, becoming the third player in Zag women's basketball history to be drafted by the WNBA.

Standish, the two-time All-West Coast Conference honoree, helped Gonzaga to its third-straight NCAA Tournament Sweet Sixteen appearance in 2011-12. She averaged a team-best 16.4 points, 7.5 rebounds and 1.5 blocks per game, while shooting an impressive 48.0 percent (214-of-446) from the field and 78.9 percent (127-of-161) at the charity stripe.

Standish closed out her Gonzaga career as the school's leader in games played (138) and blocks (176). She also stands fifth in the career record book for rebounds (809); seventh in both points (1,583) and field goal percentage (48.8) and eight in free throws made (289).

Standish was released from the Minnesota Lynx during training camp in May of 2012. She currently plays profes-

sionally in Australia with the Townsville Fire and former teammate Kelly Bowen.



KATELAN REDMON became the second Gonzaga women's basketball player to be drafted in the 2012 WNBA Draft, picked in the third round, 36th overall by the New York Liberty.

Redmon, a two-time All-West Coast Conference honoree and 2010 WCC Newcomer of the Year, averaged 13.4 points, 5.4 rebounds and 1.6 assists per game as a senior with the Zags. She became the 18th player in school history to eclipse 1,000-points plateau, ending her career with 1,412 - which is ninth highest in school history - and is the Bulldogs career leader in field goal percentage at 51.7 percent. She also grabbed 548 rebounds, had 170 assists and made 103 steals in 102 games played.

Redmon was released by the Liberty during training camp but was re-signed shortly thereafter. She played in seven games during the 2012 season, averaging 1.0 point and 1.1 rebounds per game. Her first WNBA game was against the Chicago Sky and former Zag teammate Courtney Vandersloot.

Redmon is currently playing professionally in Israel with Elitzur



Other Zags Playing Professionally

- Janelle Bekkering - Currently playing professionally in Belgium with Kangoeroes-Boom.
- Kelly Bowen - Currently playing professionally in Australia with the Townsville Fire.
- Ashley Burke - Played professionally in the Czech Republic.
- Anne Bailey - Played professionally in Finland.
- Ashley Anderson - Played professionally in Finland and Puerto Rico.

2012-13 BULLDOGS



1

Chelsea Waters
G/F 6-1 FR
Lewiston, ID



3

Haiden Palmer
G 5-8 RS JR
Moreno Valley, CA



5

Maiki Viela
G 5-6 SO
Lahaina, HI



10

Danielle Walter
G 6-0 RS SO
Pasco, WA



12

Taelor Karr
G 5-8 SR
Paola, KS



13

Michaela O'Rourke
G 5-10 FR
Bellevue, WA



14

Sunny Greinacher
F 6-4 SO
Essen, Germany



20

Meghan Winters
G 5-11 SR
Englewood, CO



22

Shaniqua Nilles
F 6-0 RS FR
Spokane, WA



23

Kiara Kudron
G 6-2 FR
Santa Barbara, CA



24

Keani Albanez
G 5-10 SO
Santa Barbara, CA



30

Stephanie Golden
C 6-3 JR
Clayton, CA



31

Elle Tinkle
G 6-2 FR
Missoula, MT



33

Lindsay Sherbert
G 6-0 RS JR
Temecula, CA



34

Jazmine Redmon
G 5-9 JR
Spokane, WA



44

Shelby Cheslek
C 6-5 RS FR
Pullman, WA



Kelly Graves
Head Coach
13th year



Jodie Kaczor Berry
Assistant Coach
10th year



Lisa Misphey Fortier
Assistant Coach
8th year



Julie Shaw
Assistant Coach
2nd year



Michelle Clark
Director of
Basketball
Operations
5th year



Peter Clark
Athletic Trainer
5th year