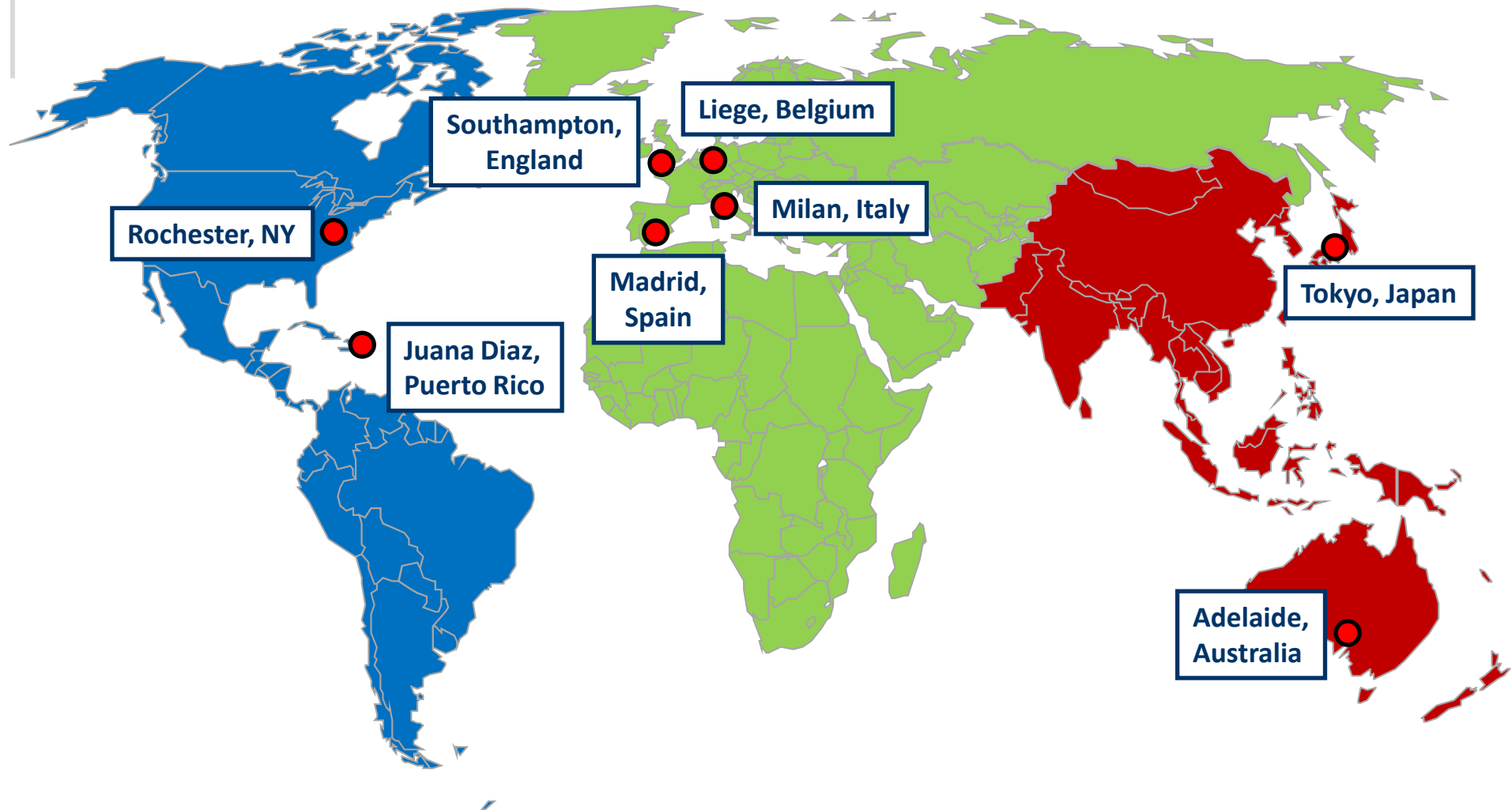
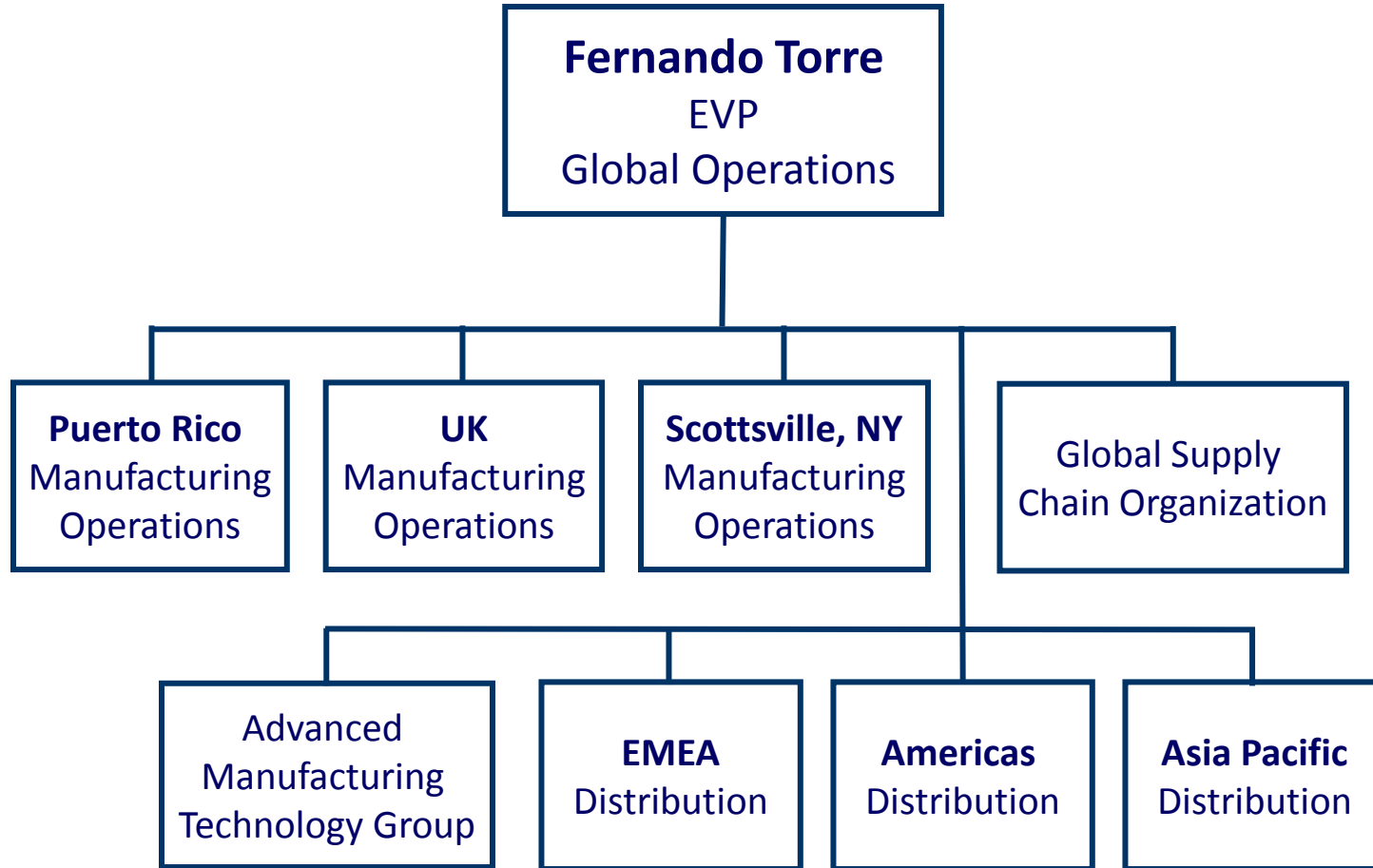


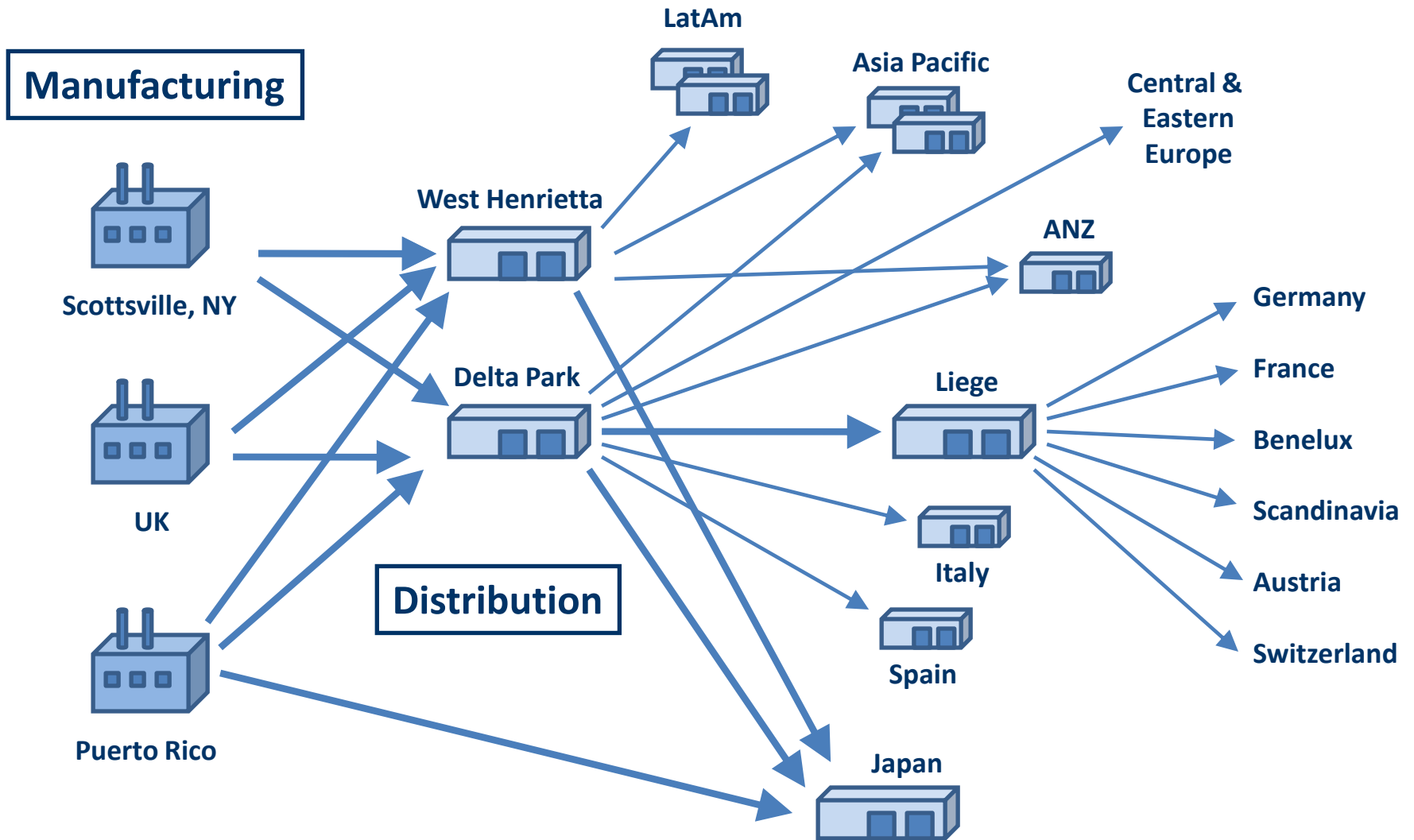


Fernando Torre
*Executive Vice President,
Global Operations*
CooperVision, Inc.





(Dotted line to R&D)





- Manufactures approximately 770 million lenses per year, or 59% of our volume
- Secondary packaging of approximately 530 million lenses per year
- Number of employees: 1,600
- Square Footage: 350,000



- **Manufactures approximately 510 million lenses per year, or 40% of our volume**
- **Number of employees: 1,800**
- **Square Footage: 240,000**



- Manufactures approximately 10 million lenses per year, or 1% of our volume
- Focused on the production of lathed “Made to Order” or very low volume products
- Number of employees: 540
- Square Footage: 50,000



- Distributes approximately 390 million lenses per year
- Secondary packaging of approximately 150 million lenses per year
- Number of employees: 480
- Square Footage: 282,000



- Distributes approximately 460 million lenses per year
- Secondary packaging of approximately 420 million lenses per year
- Number of employees: 360
- Square Footage: 140,000

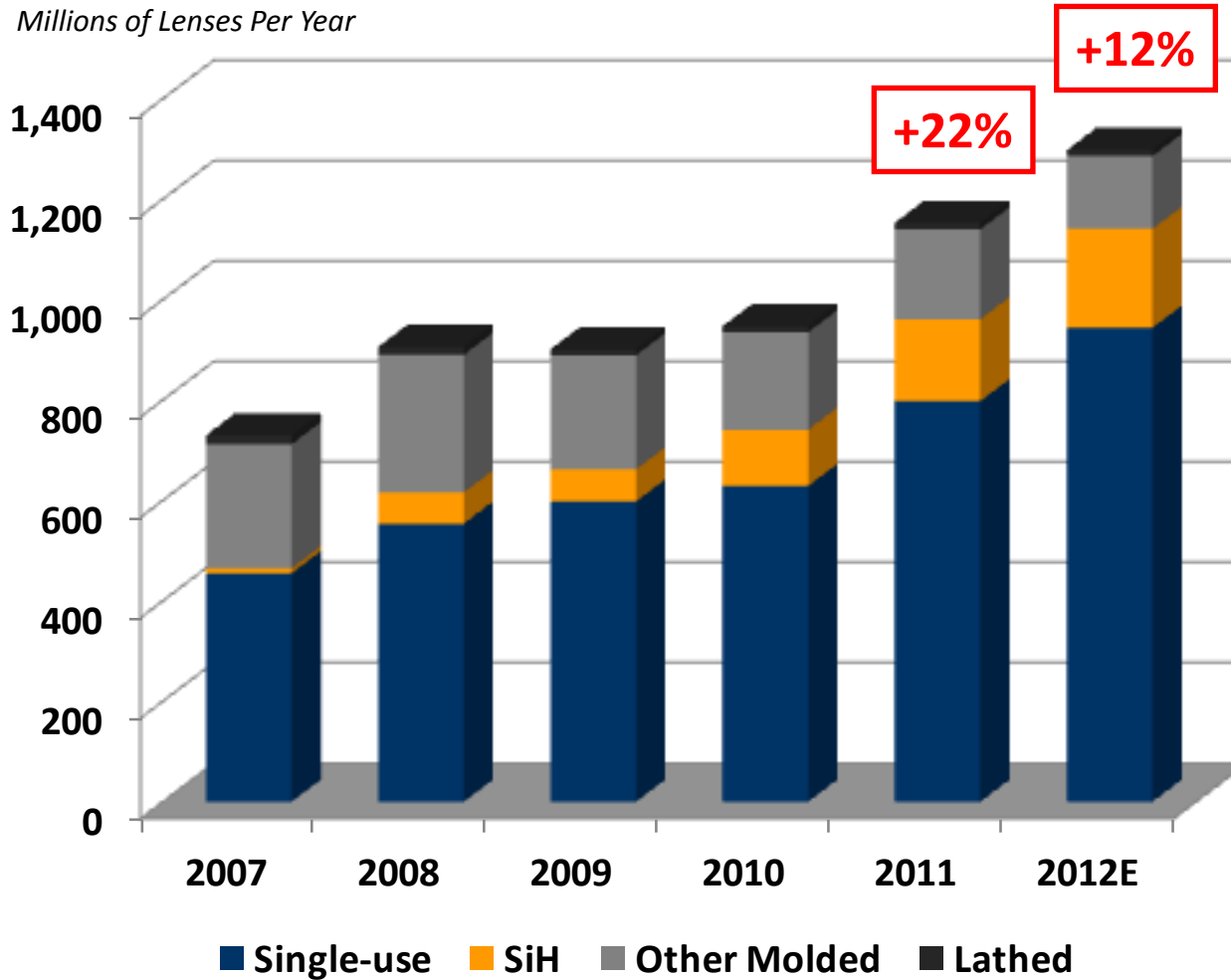


- Distributes all our lenses for France, Germany, Benelux, Austria, Switzerland and Scandinavia
- Number of employees: 150
- Square Footage: 124,000



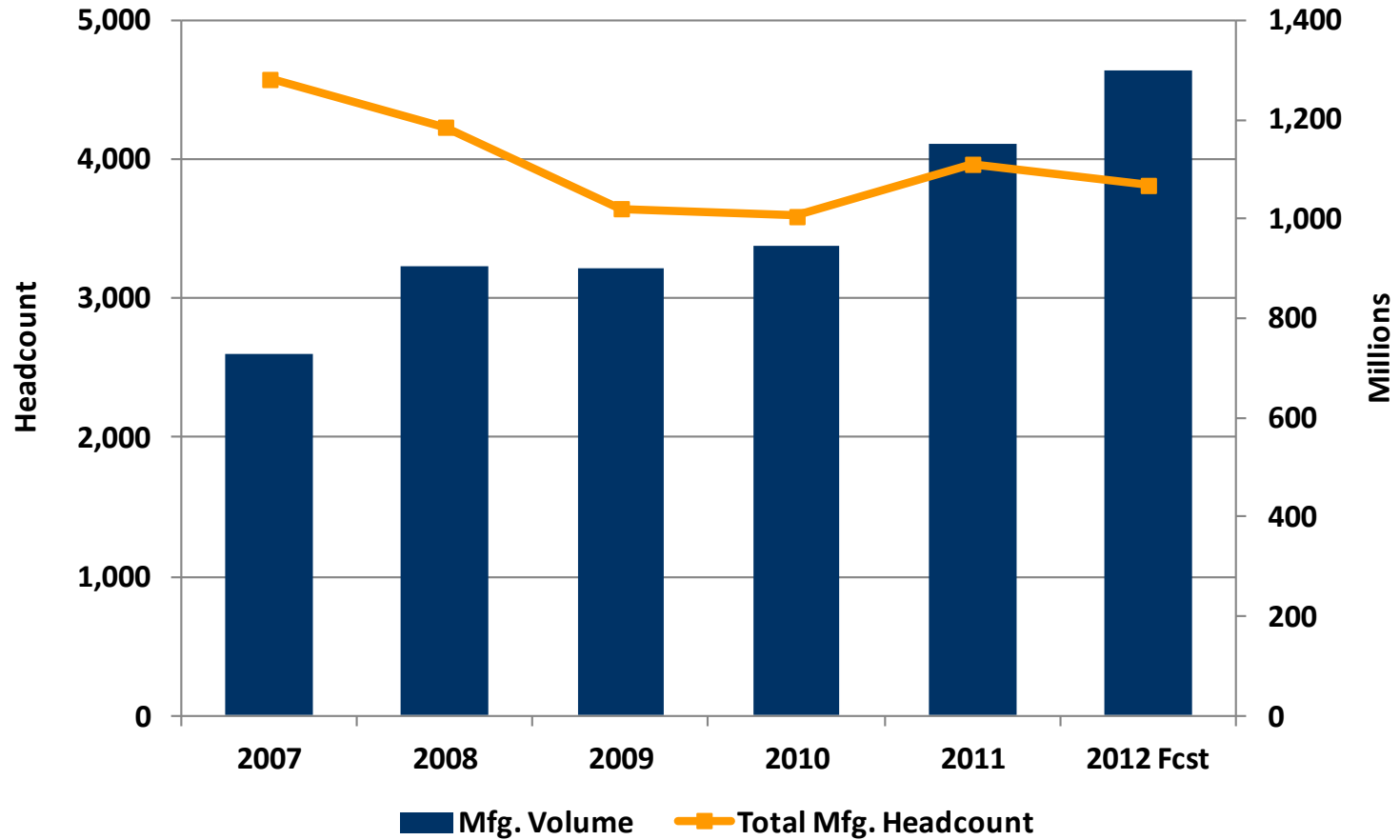
- Distributes approximately 430 million lenses per year
- Operated by Nippon Express, a 3rd party logistics provider
- Number of employees: 62
- Square Footage: 34,500

Single-use driving up production levels



Source: Management estimates

Productivity per employee improving



Source: Management estimates

- 1. Continue development of an operational culture based on Continuous Improvement:**
 - Lean Manufacturing
 - Six Sigma
- 2. Continue investment in the development of advanced manufacturing processes and technology**
- 3. Continue deployment of advanced management systems and processes in Global Supply Chain and Distribution**
- 4. Capacity Utilization**
 - Target capacity utilization for key products of approximately 85%
 - Target additional spare capacity in key manufacturing support services and secondary packaging

Manufacturing

- **Puerto Rico**
 - Nov. 2011 (No observations)
 - April 2008 (3 observations; all corrected, 2 of them during the audit)
 - Feb. 2005 (No observations)
- **UK**
 - April 2010 (3 observations; all corrected)
 - June 2008 (3 observations; all corrected)
 - Nov. 2006 (1 observation; corrected)
- **Scottsville**
 - The facility has been audited by FDA 4 times in the past 8 years with no observations in any of the audits

Distribution

- **West Henrietta**
 - May 2012 (5 observations; all corrected, 4 of them during the audit)
 - October 2011 (5 observations; all corrected)
 - July 2009 (No observations)
- **Delta Park**
 - April 2010 (4 observations; all corrected)
 - June 2008 (3 observations; all corrected)