

NBC sweeps through May again

NBC won its ninth consecutive May sweeps Thursday, one of the season's few bright spots for the No. 3-rated network. NBC Entertainment President Warren Littlefield called the win a "real sense of renewal."

And Wednesday's airing of the Daytime Emmys put ABC in second place for sweeps.



'BLACK TIE AFFAIR': Bradley Whitford, left, Kate Capshaw, John Calvin and Alison Elliott star in NBC's detective spoof.

By Feisig & Taylor

What's on the networks this fall

This week Fox was the final network to reveal its plans for fall, when it will begin to offer seven nights a week of national programming.

ABC, CBS, NBC and Fox will add 38 series, with 23 new comedies or variety shows, 12 new dramas and three new news programs.

Here's a look at what the fall night-by-night lineup will look like; in some cases, program names have been abbreviated for space. **New series are in bold.**

MONDAY

8:00	ABC	Day One	CBS	Evening Shade	NBC	Fresh Prince Blossom	Fox	Movie
8:30		Football		Dave's World				
9:00				Murphy Brown		Movie		
9:30				Love & War				
10:00				Northern Exposure				(Local)

TUESDAY

8:00	Full House	Rescue 911	Saved by the Bell	Roc
8:30	Phenom		Getting By	Buddy Blues
9:00	Roseanne	Movie	John Larroquette	Most Wanted
9:30	Coach		The Second Half	
10:00	NYPD Blue		Dateline NBC	(Local)

WEDNESDAY

8:00	Thea	Trouble w/Larry	Unsolved Mysteries	Beverly Hills, 90210
8:30	Joe's Life	The Nanny		
9:00	Home Improvement	South of Sunset	NBC newsmag.	Melrose Place
9:30	Grace Under Fire			
10:00	Do the Strand	48 Hours	Law & Order	(Local)

THURSDAY

8:00	ABC	Missing Persons	CBS	Heat of the Night	NBC	Mad About You	Fox	The Simpsons
8:30						Wings		Sinbad
9:00		Matlock		Connie Chung		Serfield		In Living Color
9:30				Angel Falls		L.A. Law		Herman's Head
10:00		PrimeTime Live						(Local)

FRIDAY

8:00	Family Matters	It Had to Be You	Against the Grain	Brisco County Jr.
8:30	Boy Meets World	Family Album		
9:00	Step by Step	Hearts Afire	Friday Mystery	The X-Files
9:30	Hang w/Mr. Cooper	Good Advice		
10:00	20/20	Picket Fences		(Local)

SATURDAY

8:00	George	Dr. Quinn	Mommies	Cops
8:30	Where I Live		Cafe Americain	Cops II
9:00	Paula Poundstone	Harts of the West	Empty Nest	Front Page
9:30			Nurses	
10:00	The Commish	Walker/Texas Ranger	Sisters	(Local)

SUNDAY

7:00	Funniest Videos	60 Minutes	Witness Video	Townsend Television
7:30	Funniest People			
8:00	Lois & Clark/Superman	Murder, She Wrote	SeaQuest DSV	Martin
8:30				My Girls
9:00	Movie	Movie	Movie	Married w/Children
9:30				Daddy Dearest
10:00				(Local)

TRAVEL BRIEFS

Parages give guests an unwanted tag

Sea World celebrates Memorial Day, traditional kickoff for the summer amusement park season, with new attractions, on land and at Sea World

Sea World celebrates Memorial Day, traditional kickoff for the summer amusement park season, with new attractions, on land and at Sea World

cal significance" is the message in large type on a map distributed by discount rental car company Auto Europe. Good thing, too, because its map still lumps Croatia, Bosnia and other embattled areas into what was the old Yugoslavia.

ALAN G. ...

ing Out Day. Some things apparently remain too hot to handle, including the spectacle of angry and proud gay voices raised in rude defiance of p.c. propriety.

What may surprise the underinformed — and this probably isn't just a function of airing on commercial instead of pay TV — is that the material in *Out There* is far less sexually oriented and

'OUT THERE' HOST LEA DELARIA: 'Isn't it great seeing gay people telling the jokes instead of being the butt of them?'

By Marc Geller

profane than the sniggering norm of *Def Comedy Jam*. "Isn't it great seeing gay people telling the jokes, instead of being the butt of them?" barks the show's raucous host, Lea DeLaria, a butch cross between Kaye Ballard and Lou Costello as

haunted by Sam Kinison. DeLaria, who has appeared on *Arsenio*, has energy to burn but laughs at her own stuff too much. (Was Kate Clinton, another star of gay stand-up, too busy for this gig?)

are not to be missed is HIV-positive comic Steven Moore's risky and mordant routine that laughs at death, at polite avoidance of the specter of AIDS.

Celebs like Bea Arthur, Ian McKellan, Melissa Etheridge and Kathy Najimy pop up in quickie cameos, but the night belongs to the non-household names struggling to be heard, yet refusing to stay closeted for the privilege.

way, and the consumer is going to pay for it."

I just can't see paying more money to call up information on my TV that now comes from my computer. Nor can I visualize a day when millions of Americans, most of whom still don't know how to — or don't want to — program their VCRs, are going to want to do anything more than turn on the remote control, sit back in the La-Z-Boy and watch Seinfeld. That's the real future.

CBS wins first November sweeps in nine years

By Alan Bash
USA TODAY

CBS nabbed a close, come-from-behind sweeps win, relying on weekend programming and strong specials during last month's ratings war.

The victory was CBS' first November win since 1984; the network is also expected to take February's race with two

weeks of Olympic coverage.

The numbers: CBS, 13 rating/21 share; ABC, 12.7/21; NBC, 12.2/20; Fox, 7.5/12. Each ratings point equals 942,000 TV households. Shares are percentage of sets in use.

For CBS, the big draw was perennial champ *60 Minutes* and its 25th anniversary special. Other Sunday giants: *A Walton Thanksgiving Re-*

union, miniseries *Return to Lonesome Dove* and regular *Murder, She Wrote*.

The other networks Thursday pointed to CBS' excessive "stunting," or replacing regular shows with big specials. The number of regular programming hours during sweeps, according to NBC, were ABC, 72; NBC, 71; CBS, 64. CBS says specials didn't boost ratings much.

ABC Entertainment President Ted Harbert shrugged off the second-place finish. "We decided not to pull every single trick in the book."

Among ABC stumbles, he says: "JFK (the miniseries) grossly underperformed," and a weak Saturday lineup of *The Paula Poundstone Show*, *George and Where I Live*.

None of the networks' Ken-

edy specials did well.

ABC edged out NBC for first place among adults 18-49, a demographic advertisers look at closely.

NBC's best performance came during the final week, thanks to a Thanksgiving airing of *Horne Alone*. "There's no dominant network," says NBC Entertainment President Warren Littlefield.



One-Stop Shopping For Friends & Family

Give The Gift Of USA TODAY

Call now to order your gift subscription and you'll get a FREE brass collector's ornament, a FREE gift card to announce your gift and \$15 cash back on every

CBS, Fox savor 'fringe' ratings wins

By Alan Bash
USA TODAY

The Mighty Morphin Power Rangers have done for Fox what David Letterman has done for CBS — help lift their respective networks to first-time November ratings wins.

The Nielsen Co. waits until Thursday to release official numbers for "fringe sweeps" — November ratings for everything but prime time. But networks already have begun counting the victories.

► **Saturday morning.** The 3-year-old Fox Children's Net-

work won its first November sweeps, thanks to a combo of *Mighty Morphins* and *X-Men*.

Among children 2-11, FCN boasts the top six shows. Numbers: Fox: 6.9 rating/25 share; ABC: 4.8/18; CBS: 4.7/17.

NBC says it gears its shows to teens and came in second to FCN in the 12-17 age group.

Each ratings point equals 942,000 households. Shares are percentage of sets in use.

► **Late night.** David Letterman's *Late Show*, as expected, cruised to victory, bringing CBS twice as many late night viewers as it had last Novem-

ber. CBS: 5.4/17. ABC's *Nightline*: 5.1/16. NBC's *Tonight Show*: 4.4/13.

CBS, which won the prime-time sweeps, finished third in the half-hour lead-in to the late local news. To cover that weakness, CBS is hoping Letterman's viewers will tune in early and watch the news on the local affiliate, says CBS senior vice president David Poltrack.

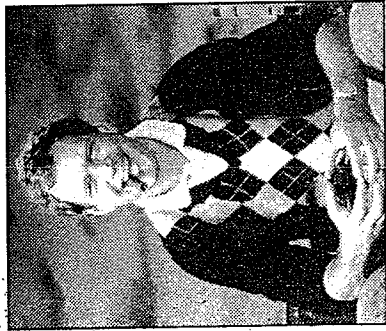
► **Network News.** ABC's *World News Tonight With Peter Jennings* still tops the list with a 10.8/20. NBC *Nightly News*: 10/18; CBS *Evening News*: 9.9/18.

► **Daytime.** CBS says it won the sweeps and its 247th straight week with the help of No. 1 soap *The Young and the Restless*. CBS: 6.2/23; ABC: 4.7/17; NBC: 3.1/12.

► **Weekday morning.** ABC says *Good Morning America* ranks No. 1 at 4.6/20, with NBC's *Today* close behind at 4.2/18.

CBS had hoped Letterman viewers wouldn't change channels when they woke up, but CBS *This Morning* still earned only a 3.1/13.

► **Morphin toy craze, 1D**



By Christopher Little
LETTERMAN: Brought CBS ratings out of slump

Bill Nye, the science guy for kids

By Jefferson Graham
USA TODAY

UNIVERSAL CITY, Calif. —

'Big Blast'

'Dave's World,' 'Harts' help CBS to victory

By Donna Gable
USA TODAY

CBS was the premier network in last week's rating race, thanks to the debut of new series and the return of old favorites.

Dave's World — which brings to the TV screen humorist Dave Barry's world — was No. 16. *Harts of the West* — starring the father/son duo

NIELSEN RATINGS

of Lloyd and Beau Bridges — ranked No. 23.

But NBC's *Frasier* — which made its debut Sept. 16 tied at No. 3 with the return of *Seinfeld* — remains the highest-rated new series on prime time at No. 7.

The season premiere of CBS'

Murphy Brown was No. 8 for the week; *Northern Exposure*, tied at No. 14; *Love & War*, No. 17; *Evening Shade*, No. 18; and *Dr. Quinn, Medicine Woman* ranked No. 20.

ABC's *Thea* was No. 25; *Boy Meets World* tied at No. 48; *Lois & Clark* tied at No. 51; *Moon Over Miami* tied with *Missing Persons* at No. 69.

NBC was third with the premieres

of *Getting By* at No. 66; *Café American* was No. 68; *seaQuest DSV* — which made a big splash when it premiered at No. 2 — took a nose dive to No. 29.

Fox's *Melrose Place* posted its best ratings since July 15, 1992, at No. 41.

NBC's presentation of *Danielle Steel's Star* — which stars 90210's Jennie Garth — tied at No. 11.

Using this chart

► Ratings information comes from the A.C. Nielsen Co.

► A ratings point represents 942,000 TV households; shares are the percentage of sets in use; number of viewers is in millions.

► (*) indicates a Nielsen ratings tie.

► (r) indicates a repeat episode.

► (s) indicates a special broadcast.

Top 10

- 60 Minutes (CBS)
- Seinfeld (NBC)
- Roseanne (ABC)
- Monday Night Football (ABC)
- 20/20 (ABC)
- Coach (ABC)
- Frasier (NBC)
- Murphy Brown (CBS)
- Murder, She Wrote (CBS)
- Sleeping With the Enemy (CBS)

Bottom 5

- 86 Roc (Fox)
- 87 America's Most Wanted (Fox)
- Bakersfield, P.D. (Fox)
- 89 Townsend Television (Fox)
- 90 Based on a True Story (Fox)

Network ratings

For the week:	Season to date:
CBS: 13.5	CBS: 13.5
ABC: 12.3	ABC: 12.3
NBC: 11.2	NBC: 11.2
Fox: 7.2	Fox: 7.2

Evening news

For the week:	Last week:
ABC: 9.8	ABC: 9.7
CBS: 8.5	NBC: 8.3
NBC: 8.5	CBS: 8.2

Monday, September 20, 1993

	Viewers	Rating	Share	Rank
8:00 Fresh Prince of Bel-Air (NBC)	24.2	15.5	24	*14
Evening Shade (CBS)	21.1	14.9	24	18
Day One (ABC)	11.9	9.1	15	60
Based on a True Story (Fox)	4.4	3.5	5	90
8:30 Dave's World (CBS)	21.7	15.1	23	16
9:00 Monday Night Football (ABC)	26.9	19.0	32	4
Murphy Brown (CBS)	25.1	17.5	25	8
Danielle Steel's Star (NBC)	20.6	15.9	24	*11
9:30 Love & War (CBS)	20.9	15.0	22	17
10:00 Northern Exposure (CBS)	21.3	15.5	24	*14

Tuesday, September 21, 1993

	Viewers	Rating	Share	Rank
8:00 Rescue 911 (CBS)	20.7	14.2	23	21
Full House (ABC)	17.6	12.6	21	28
Roc (Fox)	7.4	5.2	9	86
Saved by the Bell (NBC)	12.8	9.0	15	61
8:30 Phenom (ABC)	17.4	12.1	19	*32
Getting By (NBC)	12.6	8.5	14	*66
Bakersfield, P.D. (Fox)	6.5	4.9	8	*87
9:00 Roseanne (ABC)	27.7	19.1	30	3
Donato and Daughter (CBS)	21.3	14.8	24	19
John Larroquette Show (NBC)	14.6	9.6	15	*54
America's Most Wanted (Fox)	6.8	4.9	8	*87
9:30 Coach (ABC)	25.7	18.2	28	6
Second Half (NBC)	12.1	8.6	13	*63
10:00 NYPD Blue (ABC)	22.8	15.9	27	*11
Dateline NBC (NBC)	14.1	10.5	18	47

Wednesday, September 22, 1993

	Viewers	Rating	Share	Rank
8:00 Home Improvement (ABC)	25.5	15.9	26	*11
Unsolved Mysteries (NBC)	18.0	12.4	20	31
Beverly Hills, 90210 (Fox)	15.5	11.1	18	*39
Shame on You (CBS) (s)	12.3	8.6	14	*63
8:30 Thea (ABC)	19.3	12.9	21	25
9:00 Melrose Place (Fox)	16.0	11.0	17	41
10:21 48 Hours Special Edition (CBS)	11.4	8.2	14	*71
10:22 Now Special Edition (NBC)	10.9	8.0	14	*73
10:28 Moon Over Miami (ABC)	10.3	8.3	16	*69

Thursday, September 23, 1993

	Viewers	Rating	Share	Rank
8:00 In the Heat of the Night (CBS)	18.0	12.7	21	*26
Mad About You (NBC)	16.7	11.8	20	34
The Simpsons (Fox) (r)	17.9	11.1	18	*39
Missing Persons (ABC)	11.2	8.3	13	*69
8:30 Wings (NBC)	20.8	13.8	22	22
Sinbad Show (Fox)	15.7	9.6	15	*54
9:00 Seinfeld (NBC)	29.5	19.3	30	2
Eye to Eye (CBS)	15.1	10.9	17	*42
Matlock (ABC)	14.0	10.4	16	*48
In Living Color (Fox)	14.2	8.9	14	62
9:30 Frasier (NBC)	27.0	18.1	28	7
Herman's Head (Fox)	11.2	7.5	12	78
10:00 Word From Sponsor #2 (NBC)(s)	15.7	10.9	19	*42
Nightline Town Meeting (ABC)(s)	14.3	10.8	19	44
Angel Falls (CBS)	13.3	10.2	18	*51

Friday, September 24, 1993

	Viewers	Rating	Share	Rank
8:00 Family Matters (ABC)	18.2	11.3	21	*35
It Had to Be You (CBS)	10.5	7.7	15	76
Blossom in Paris (NBC)	10.1	7.0	13	80
Brisco County (Fox)	10.9	6.9	13	81
8:30 Boy Meets World (ABC)	16.5	10.4	19	*48
Family Album (CBS)	11.0	8.0	15	*73
9:00 The Odd Couple (CBS)	14.1	10.4	19	*48
Step by Step (ABC)	16.9	10.7	19	*45
X-Files (Fox)	11.1	7.2	13	79
9:30 Hangin' With Mr. Cooper (ABC)	17.6	11.3	20	*35
10:00 20/20 (ABC)	26.0	18.3	33	5
Mommies (NBC)	9.0	6.2	11	82
10:30 Café American (NBC)	8.0	5.5	10	84

Saturday, September 25, 1993

	Viewers	Rating	Share	Rank
8:00 Dr. Quinn, Medicine Woman (CBS)	23.0	14.6	26	20
Mommies (NBC)	12.0	8.2	15	*71
Cocktail (ABC) (r)	11.1	7.9	14	75
Cops (Fox)	11.4	7.6	14	77
8:30 Cops 2 (Fox) (r)	12.9	8.6	15	*63
Café American (NBC)	12.8	8.4	15	68
9:00 Harts of the West (CBS)	21.1	13.5	23	23
Empty Nest (NBC)	18.1	12.1	21	*32
Front Page (Fox)	7.4	5.3	9	85
9:30 Nurses (NBC)	18.8	13.1	23	24
10:00 Walker, Texas Ranger (CBS)	19.2	12.5	23	*29
Commish (ABC)	16.4	11.2	21	*37
Sisters (NBC)	13.6	10.2	19	*51

Sunday, September 26, 1993

	Viewers	Rating	Share	Rank
7:00 60 Minutes (CBS)	28.9	20.5	36	1
America's Funniest Home Videos (ABC)	15.4	9.5	17	57
I Witness Video (NBC)	9.2	6.1	11	83
Townsend Television (Fox)	5.3	3.6	6	89
7:30 America's Funniest People (ABC)	15.3	9.3	16	59
8:00 Murder, She Wrote (CBS)	24.2	17.3	27	9
seaQuest DSV (NBC)	22.2	12.5	19	*29
Lois & Clark (ABC)	16.3	10.2	16	*51
Martin (Fox)	15.8	9.4	15	58
8:30 Living Single (Fox)	17.2	10.7	16	*45
9:00 Sleeping With the Enemy (CBS)	24.6	17.2	28	10
Final Appeal (NBC)	18.2	12.7	20	*26
Married ... With Children (Fox)	17.0	11.2	17	*37
The War for Baby Jessica (ABC)	13.7	9.6	15	*54
9:30 Daddy Dearest (Fox)	12.2	8.5	13	*66

NIELSEN RATINGS

Using this chart

► Ratings information comes from the A.C. Nielsen Co.

► A ratings point represents 942,000 TV households; shares are the percentage of sets in use; number of viewers is in millions.

► (*) indicates a Nielsen ratings tie.

► (r) indicates a repeat episode.

► (s) indicates a special broadcast.

Top 10

- 1 60 Minutes (CBS)
- 2 Home Improvement (ABC)
- 3 Roseanne (ABC)
- 4 Seinfeld (NBC)
- 5 Murphy Brown (CBS)
- 6 Frasier (NBC)
- 7 Country Music Awards (CBS)
- 8 Coach (ABC)
- 9 Love & War (CBS)
- 10 Shattered Trust (NBC)

Bottom 5

- 88 Bakersfield, P.D. (Fox)
- 89 Roc (Fox)
- 90 Communion (Fox)
- * Front Page (Fox)
- 92 Brisco County (Fox)

Network ratings

For the week:	Season to date:
CBS: 13.1	CBS: 13.3
ABC: 12.4	ABC: 12.3
NBC: 10.5	NBC: 10.8
Fox: 6.9	Fox: 7.1

Evening news

For the week:	Last week:
ABC: 10.0	ABC: 9.8
CBS: 8.4	CBS: 8.5
NBC: 8.4	NBC: 8.5

Monday, September 27, 1993

	Viewers	Rating	Share	Rank
8:00 Fresh Prince of Bel-Air (NBC)	22.8	14.8	24	18
Evening Shade (CBS)	19.9	13.9	22	24
Day One (ABC)	11.0	8.3	14	67
Communion (Fox)	6.0	4.3	7	*90
8:30 Dave's World (CBS)	22.8	15.8	24	13
Blossom (NBC)	22.6	15.0	23	17
9:00 Murphy Brown (CBS)	25.3	18.2	27	5
Shattered Trust (NBC)	22.5	16.2	25	10
Monday Night Football (ABC)	21.4	15.7	26	14
9:30 Love & War (CBS)	22.5	16.3	24	9
10:00 Northern Exposure (CBS)	20.7	15.6	25	15

Tuesday, September 28, 1993

	Viewers	Rating	Share	Rank
8:00 Rescue 911 (CBS)	22.5	14.5	23	*21
Full House (ABC)	19.2	13.3	22	25
Saved by the Bell: College (NBC)	11.0	7.8	13	*70
Roc (Fox)	6.5	4.5	7	89
8:30 Phenom (ABC)	19.2	13.0	21	*26
Getting By (NBC)	10.5	7.1	11	77
Bakersfield, P.D. (Fox)	7.5	5.1	8	88
9:00 Roseanne (ABC)	29.4	19.2	29	*3
Precious Victims (CBS)	20.4	14.6	23	20
John Larroquette Show (NBC)	13.1	8.6	13	64
America's Most Wanted (Fox)	7.9	5.5	8	*86
9:30 Coach (ABC)	24.5	16.7	26	8
Second Half (NBC)	10.7	7.3	11	76
10:00 NYPD Blue (ABC)	20.3	14.5	24	*21
Dateline NBC (NBC)	13.1	9.2	15	*59

Wednesday, September 29, 1993

	Viewers	Rating	Share	Rank
8:00 Country Music Awards (CBS) (s)	27.2	16.9	27	7
Unsolved Mysteries (NBC)	15.2	10.8	17	42
Thea (ABC)	14.9	10.1	17	52
Beverly Hills, 90210 (Fox)	13.9	9.8	16	53
8:30 Joe's Life (ABC)	15.3	10.6	16	*44
9:00 Home Improvement (ABC)	30.1	19.6	29	2
Melrose Place (Fox)	11.5	8.5	13	*65
Now With Tom and Katie (NBC)	10.2	7.7	11	*72
9:30 Grace Under Fire (ABC)	23.1	15.9	23	12
10:00 Law & Order (NBC)	13.7	10.3	17	*49
Moon Over Miami (ABC)	12.3	9.2	15	*59

Thursday, September 30, 1993

	Viewers	Rating	Share	Rank
8:00 The Simpsons (Fox)	19.9	12.7	21	30
In the Heat of the Night (CBS)	17.2	12.3	20	33
Mad About You (NBC)	16.4	11.9	20	*35
Missing Persons (ABC)	11.2	8.1	13	68
8:30 Wings (NBC)	20.2	14.2	23	23
Sinbad Show (Fox)	16.3	10.6	17	*44
9:00 Seinfeld (NBC)	28.7	19.2	30	*3
Matlock (ABC)	15.8	11.9	19	*35
Connie Chung (CBS)	12.8	9.6	15	54
In Living Color (Fox)	13.0	8.5	13	*65
9:30 Frasier (NBC)	25.7	17.3	27	6
Herman's Head (Fox)	9.7	6.8	11	*78
10:00 PrimeTime Live (ABC)	17.1	13.0	23	*26
Dateline NBC (NBC)	16.2	11.8	21	*37
Angel Falls (CBS)	12.2	9.3	16	*57

Friday, October 1, 1993

	Viewers	Rating	Share	Rank
8:00 Family Matters (ABC)	18.1	11.8	23	*37
Against the Grain (NBC)	9.7	6.8	13	*78
It Had to Be You (CBS)	7.8	6.0	12	85
Brisco County Jr. (Fox)	7.5	5.5	11	*86
8:30 Boy Meets World (ABC)	19.2	12.0	22	34
Family Album (CBS)	8.7	6.4	12	82
9:00 Step by Step (ABC)	20.2	12.9	24	29
Secrets of Lake Success (NBC)	9.8	7.7	14	*72
Day in Life of Country Music (CBS) (s)	9.8	6.5	12	81
X-Files (Fox)	9.2	6.3	11	*83
9:30 Hangin' With Mr. Cooper (ABC)	18.9	12.5	23	31
10:00 20/20 (ABC)	20.4	14.7	28	19

Saturday, October 2, 1993

	Viewers	Rating	Share	Rank
8:00 Dr. Quinn				
Medicine Woman (CBS)	19.8	13.0	24	*26
Beverly Hills Cop (ABC)	11.8	7.9	14	69
Mommies (NBC)	11.2	7.8	15	*70
Cops (Fox)	9.9	6.7	13	80
8:30 Cops 2 (Fox) (r)	11.0	7.5	14	*74
Cafe Americain (NBC)	10.8	7.5	14	*74
9:00 Harts of the West (CBS)	16.6	10.5	19	46
Empty Nest (NBC)	14.8	10.4	19	*47
Front Page (Fox)	5.8	4.3	8	*90
9:30 Nurses (NBC)	15.1	10.7	20	43
10:00 Walker, Texas Ranger (CBS)	16.3	10.9	21	*40
Commish (ABC)	16.0	10.3	20	*49
Sisters (NBC)	12.1	9.5	18	*55

Sunday, October 3, 1993

	Viewers	Rating	Share	Rank
7:00 America's Home Videos (ABC)	12.7	8.8	16	*61
I Witness Video (NBC)	9.4	6.3	11	*83
Brisco County Jr. (Fox)	5.3	4.0	7	92
7:20 60 Minutes (CBS)	27.5	19.7	33	1
7:30 America's Funniest People (ABC)	13.6	8.8	15	*61
8:00 seaQuest DSV (NBC)	18.2	10.9	16	*40
Lois & Clark (ABC)	16.4	10.2	15	51
Martin (Fox)	14.1	9.3	14	*57
8:20 Murder, She Wrote (CBS)	22.2	16.0	24	11
8:30 Living Single (Fox)	16.2	10.4	15	*47
9:00 The Empty Cradle (ABC)	22.0	15.2	24	16
Married... With Children (Fox)	16.6	11.5	17	39
Troubleshooters: Trapped (NBC)	14.2	9.5	15	*55
9:20 River of Rage (CBS)	17.9	12.4	20	32
9:30 Daddy Dearest (Fox)	12.3	8.8	14	*61

New shows pick up steam in ABC win

By Donna Gable
USA TODAY

ABC hammered out a win for the week of Oct. 4-10 thanks to the power of some well-seasoned tools and some shiny new ones.

Home Improvement was the most-

NIELSEN RATINGS

watched program of the week; *Roseanne* was No. 2; and *Coach*, No. 4.

But newcomers to the lineup inched up the ratings ladder.

ABC's *Lois & Clark* leapt from No.

51 to No. 40 in a single week.

Grace Under Fire rose from No. 12 the previous week to the No. 6 position. *NYPD Blue* was No. 13, up from No. 21; *Phenom* was No. 17, up from No. 26.

NBC's *seaQuest DMV* floated from No. 40 to No. 37; *Café Americain*

moved from No. 74 to No. 62; *The John Larroquette Show* moved up one to No. 63; *The Mommies* jumped from No. 70 to No. 60; *The Second Half* ranked No. 70, up from No. 76. *Frasier* slipped from No. 6 to No. 8.

Ratings are delayed as Nielsen researches cable channel lineup shifts.

Using this chart

► Ratings information comes from the A.C. Nielsen Co.

► A ratings point represents 942,000 TV households; shares are the percentage of sets in use; number of viewers is in millions.

► (*) indicates a Nielsen ratings tie.

► (r) indicates a repeat episode.

► (s) indicates a special broadcast.

Top 10

- 1 Home Improvement (ABC)
- 2 Roseanne (ABC)
- 3 Seinfeld (NBC)
- 4 Coach (ABC)
- 5 Murphy Brown (CBS)
- 6 Grace Under Fire (ABC)
- 7 NFL Monday Night Football (ABC)
- 8 Frasier (NBC)
- 9 20/20 (ABC)
- 10 60 Minutes (CBS)

Bottom 5

- 81 Roc (Fox)
- 82 Front Page (Fox)
- 83 Bakersfield, P.D. (Fox)
- 84 Out on a Limb (Fox)
- 85 Adventures of Brisco County Jr. (Fox)

Network ratings

For the week:	Season to date:
ABC: 13.5	CBS: 13.2
CBS: 13.0	ABC: 12.7
NBC: 11.3	NBC: 11.0
Fox: 7.2	Fox: 7.1

Evening news

For the week:	Last week:
ABC: 10.3	ABC: 10.0
NBC: 9.1	CBS: 8.4
CBS: 7.9	NBC: 8.4

Monday, October 4, 1993

	Viewers	Rating	Share	Rank
8:00 Fresh Prince of Bel-Air (NBC)	21.8	14.9	24	18
Evening Shade (CBS)	18.3	12.6	20	31
Day One (ABC)	12.3	9.5	16	*60
Out on a Limb (Fox)	6.4	4.7	7	84
8:30 Blossom (NBC)	21.3	14.5	22	20
Dave's World (CBS)	20.4	14.0	22	23
9:00 Murphy Brown (CBS)	25.1	17.8	26	5
Monday Night Football (ABC)	23.3	17.1	28	7
Someone's Watching (NBC)	19.4	14.4	22	21
9:30 Love & War (CBS)	22.3	16.3	24	11
10:00 Northern Exposure (CBS)	20.4	15.3	25	*14

Tuesday, October 5, 1993

	Viewers	Rating	Share	Rank
8:00 Full House (ABC)	23.7	15.7	26	12
Saved by the Bell: College (NBC)	12.0	8.0	13	*70
Roc (Fox)	7.9	5.4	9	81
8:07 AL Playoffs: Game 1 (CBS)	14.9	11.3	19	45
8:30 Phenom (ABC)	22.8	15.1	24	17
Getting By (NBC)	13.1	8.5	13	*68
Bakersfield, P.D. (Fox)	7.2	5.0	8	83
9:00 Roseanne (ABC)	30.4	20.4	31	2
John Larroquette Show (NBC)	13.3	9.3	14	*63
America's Most Wanted (Fox)	8.6	6.0	9	79
9:30 Coach (ABC)	26.9	18.5	29	4
Second Half (NBC)	11.1	8.0	12	*70
10:00 NYPD Blue (ABC)	21.0	15.4	26	13
Dateline NBC (NBC)	13.4	10.0	17	58

Wednesday, October 6, 1993

	Viewers	Rating	Share	Rank
8:00 Unsolved Mysteries (NBC)	19.1	13.6	22	25
Beverly Hills, 90210 (Fox)	14.4	10.7	17	*50
Thea (ABC)	15.4	10.5	17	*52
8:10 NL Playoffs Game 1 (CBS)	20.8	15.2	25	16
8:30 Joe's Life (ABC)	16.7	11.0	17	47
9:00 Home Improvement (ABC)	34.6	21.9	32	1
Now With Tom and Katie (NBC)	13.6	10.4	16	55
Melrose Place (Fox)	12.8	9.2	14	*65
9:30 Grace Under Fire (ABC)	26.1	17.6	27	6
10:00 Law & Order (NBC)	15.3	12.1	21	*35
Moon Over Miami (ABC)	14.7	10.9	18	48

Thursday, October 7, 1993

	Viewers	Rating	Share	Rank
8:00 The Simpsons (Fox)	20.0	12.3	20	*32
Mad About You (NBC)	16.3	12.3	20	*32
Missing Persons (ABC)	13.2	9.8	16	59
8:09 NL Playoffs: Game 2 (CBS)	16.1	11.5	20	*41
8:30 Wings (NBC)	20.7	14.7	23	19
Sinbad Show (Fox)	15.7	10.2	16	56
9:00 Seinfeld (NBC)	28.4	19.1	29	3
Matlock (ABC)	18.5	13.7	21	24
In Living Color (Fox)	13.0	8.8	13	67
9:30 Frasier (NBC)	24.2	16.9	26	8
Herman's Head (Fox)	9.7	6.9	11	77
10:00 PrimeTime Live (ABC)	20.3	15.3	26	*14
L.A. Law (NBC)	17.4	13.3	23	26

Friday, October 8, 1993

	Viewers	Rating	Share	Rank
8:00 Family Matters (ABC)	19.8	13.2	25	*27
Against the Grain (NBC)	9.0	7.0	13	76
Brisco County Jr. (Fox)	8.9	5.8	11	80
8:10 AL Playoffs Game 3 (CBS)	15.3	10.8	20	49
8:30 Boy Meets World (ABC)	18.5	12.1	22	*35
9:00 Step by Step (ABC)	20.2	13.0	24	*29
Secrets of Lake Success (NBC)	9.5	7.4	14	73
X-Files (Fox)	10.4	6.6	12	78
9:30 Hangin' With Mr. Cooper (ABC)	20.0	13.0	24	*29
10:00 20/20 (ABC)	23.2	16.5	31	9

Saturday, October 9, 1993

	Viewers	Rating	Share	Rank
8:00 Mommies (NBC)	14.0	9.5	18	*60
Three Fugitives (ABC)	14.7	9.2	17	*65
Cops (Fox)	12.9	8.0	15	*70
8:09 AL Playoffs Game 4 (CBS)	15.0	10.5	20	*52
8:30 Café Americain (NBC)	13.9	9.4	17	62
Cops 2 (Fox) (r)	14.1	8.5	15	*68
9:00 Empty Nest (NBC)	17.5	12.3	22	*32
Front Page (Fox)	8.4	5.2	9	82
9:30 Nurses (NBC)	17.0	11.9	21	39
10:00 Commish (ABC)	16.5	11.5	22	*41
Sisters (NBC)	14.9	11.1	21	46

Sunday, October 10, 1993

	Viewers	Rating	Share	Rank
7:00 NFL Football (NBC)	16.9	12.0	23	*37
America's Funniest Videos (ABC)	18.1	11.5	20	*41
Brisco County (Fox)	6.3	4.5	8	85
7:19 I Witness Video (NBC)	10.6	7.3	13	74
7:30 60 Minutes (CBS)	22.6	16.4	27	10
America's Funniest People (ABC)	17.2	10.5	18	*52
8:00 seaQuest DSV (NBC)	19.7	12.0	18	*37
Lois & Clark (ABC)	19.3	11.7	18	40
Martin (Fox)	14.8	9.3	14	*63
8:29 NL Playoffs Game 4 (CBS)	20.9	14.2	24	22
8:30 Living Single (Fox)	16.1	10.1	15	57
9:00 Shameful Secrets (ABC)	18.1	13.2	21	*27
The Flood (NBC)	17.6	11.4	18	44
Married ... With Children (Fox)	16.5	10.7	16	*50
9:30 Daddy Dearest (Fox)	10.5	7.1	11	75

'Home Improvement' powers to No. 1

By Jefferson Graham and Donna Gable
USA TODAY

Home Improvement is TV's top show.

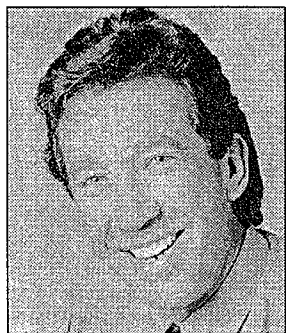
In the latest Nielsen season-to-date rankings, *Home Improvement* is slightly ahead of the show it beat regularly on Wednesdays last season, *Seinfeld*, which NBC switched to Thursdays in the spring.

Home's average rating is 19.3, compared with 19.2 for *Seinfeld*. (A rating point equals 942,000 homes.)

And *Home* has surpassed ABC's *Roseanne*; last season, their positions were reversed.

Roseanne and CBS' *60 Minutes* tie for third place with a 19.1 rating this season. ABC's *Coach* is No. 5 with an 18.

Four new shows make the



Touchstone Television

ALLEN: 'Home Improvement' is No. 1 season-to-date.

season-to-date top 20: NBC's *Frasier* (No. 7), ABC's *Grace Under Fire* (No. 10) and *NYPD Blue* (No. 12) and CBS' *Dave's World* (No. 18).

The lowest rated show:

The season's top 20

Nielsen's top 20 prime-time programs so far this season:

1. *Home Improvement*, ABC
2. *Seinfeld*, NBC
3. *Roseanne*, ABC
- * 60 Minutes, CBS
5. *Coach*, ABC
6. *Murphy Brown*, CBS
7. *Frasier*, NBC
8. *Murder, She Wrote*, CBS
9. *Monday Night Football*, ABC
10. *Grace Under Fire*, ABC

11. *20/20*, ABC
12. *NYPD Blue*, ABC
13. *Love & War*, CBS
14. *Northern Exposure*, CBS
15. *NBC Monday Night Movie*
16. *The Fresh Prince of Bel-Air*, NBC
17. *ABC Sunday Night Movie*
18. *Dave's World*, CBS
19. *CBS Sunday Movie*
20. *CBS Tuesday Movie*

Fox's *Townsend Television*. In last week's ratings battle, beauty beat the beasts.

ABC's Sunday telecast of the 1990 film *Pretty Woman* — starring Julia Roberts —

was the No. 1 show of the week, outranking the World Series and *Monday Night Football* (No. 20).

But America's pastime helped CBS snag the weekly

crown. World Series Game 2 scored the No. 6 position; National League Championship Game 6 was No. 8; World Series Game 1 was No. 12; and American League Championship Game 6 ranked No. 17.

ABC was second overall for the week with *Home Improvement* at No. 2; *Coach*, No. 5; and *Roseanne*, No. 7.

But third-place NBC's *Frasier* was back on top as the highest-ranked new series at No. 10. ABC's *NYPD Blue* was No. 11; *Grace Under Fire* ranked No. 15.

Dave's World (No. 18) was up 5% over the previous week and won its time period.

On the news front, the winner was *World News Tonight*, followed by *NBC Nightly News* and *CBS Evening News*.

Using this chart

► Ratings information comes from the A.C. Nielsen Co.

► A ratings point represents 942,000 TV households; shares are the percentage of sets in use; number of viewers is in millions.

► (*) indicates a Nielsen ratings tie.

► (r) Indicates a repeat episode.

► (s) indicates a special broadcast.

Top 10

- 1 *Pretty Woman* (ABC)
- 2 *Home Improvement* (ABC)
- 3 *60 Minutes* (CBS)
- 4 *Seinfeld* (NBC)
- 5 *Coach* (ABC)
- 6 *World Series Game 2* (CBS)
- 7 *Roseanne* (ABC)
- 8 *NL Playoffs Game 6* (CBS)
- * *Murphy Brown* (CBS)
- 10 *Frasier* (NBC)

Bottom 5

- 87 *Front Page* (Fox)
- 88 *Witness Video* (NBC)
- 89 *Bakersfield P.D.* (Fox)
- * *Townsend Television* (Fox)
- 91 *Baseball Relief* (Fox)

Network ratings

For the week:	Season to date:
CBS: 14.1	CBS: 13.4
ABC: 13.4	ABC: 12.9
NBC: 11.1	NBC: 11.1
Fox: 7.0	Fox: 7.1

Evening news

For the week:	Last week:
ABC: 10.3	ABC: 10.3
NBC: 9.0	NBC: 9.1
CBS: 8.2	CBS: 7.9

Monday, October 11, 1993

Time	Program	Viewers	Rating	Share	Rank
8:00	Fresh Prince of Bel-Air (NBC)	22.2	14.4	23	23
	Evening Shade (CBS)	19.1	13.1	21	31
	Day One (ABC)	11.0	8.3	13	73
	Short Time (Fox)	7.6	5.4	8	85
8:30	Dave's World (CBS)	21.9	14.7	22	18
	Blossom (NBC)	20.3	14.0	21	*25
9:00	Murphy Brown (CBS)	24.7	17.4	26	*8
	Monday Night Football (ABC)	19.6	14.5	25	*20
	A Child Too Many (NBC)	19.5	14.2	22	24
9:30	Love & War (CBS)	20.1	14.6	22	19
10:00	Northern Exposure (CBS)	20.6	15.0	25	16

Tuesday, October 12, 1993

Time	Program	Viewers	Rating	Share	Rank
8:00	Full House (ABC)	23.9	15.3	25	*13
	Saved by the Bell: College (NBC)	12.8	9.1	15	64
	Roc (Fox)	7.4	5.2	8	86
8:10	AL Playoffs Game 6 (CBS)	20.1	14.8	25	17
8:30	Phenom (ABC)	21.7	14.5	23	*20
	Getting By (NBC)	13.5	9.3	15	*60
	Bakersfield, P.D. (Fox)	5.8	4.3	7	*89
9:00	Roseanne (ABC)	26.4	17.7	27	7
	John Larroquette Show (NBC)	17.5	12.0	18	*38
	America's Most Wanted (Fox)	8.4	6.4	10	78
9:30	Coach (ABC)	26.9	18.4	28	5
	Second Half (NBC)	12.7	9.2	14	63
10:00	NYPD Blue (ABC)	21.2	16.0	27	11
	Dateline NBC (NBC)	16.0	12.0	20	*38

Wednesday, October 13, 1993

Time	Program	Viewers	Rating	Share	Rank
8:00	Unsolved Mysteries (NBC)	20.1	14.0	22	*25
	Beverly Hills, 90210 (Fox)	16.4	11.3	18	*44
	Thea (ABC)	15.4	10.3	16	*53
8:09	NL Playoffs Game 6 (CBS)	24.6	17.4	28	*8
8:30	Joe's Life (ABC)	16.4	10.8	17	49
9:00	Home Improvement (ABC)	32.0	19.9	29	2
	Now With Tom and Katie (NBC)	15.2	11.2	17	47
	Melrose Place (Fox)	13.2	9.7	14	58
9:30	Grace Under Fire (ABC)	23.5	15.1	23	*15
10:00	Law & Order (NBC)	16.0	12.5	21	*34
	Moon Over Miami (ABC)	13.0	9.3	16	*60

Thursday, October 14, 1993

Time	Program	Viewers	Rating	Share	Rank
8:00	Mad About You (NBC)	17.7	12.8	22	*32
	The Simpsons (Fox)	18.1	11.3	19	*44
	Missing Persons (ABC)	12.7	9.3	15	*60
	In the Heat of the Night (CBS)	12.5	8.9	15	66
8:30	Wings (NBC)	21.2	15.3	25	*13
	Sinbad Show (Fox)	14.6	9.4	15	59
9:00	Seinfeld (NBC)	28.7	19.3	30	4
	Matlock (ABC)	17.6	12.8	20	*32
	Connie Chung (CBS)	11.2	8.7	14	68
	In Living Color (Fox)	11.5	7.6	12	74
9:30	Frasier (NBC)	23.9	16.1	26	10
	Herman's Head (Fox)	9.1	6.3	10	79
10:00	PrimeTime Live (ABC)	17.9	13.5	24	*28
	L.A. Law (NBC)	17.9	13.5	24	*28
	Top Cops (CBS)	8.8	6.8	12	76

Friday, October 15, 1993

Time	Program	Viewers	Rating	Share	Rank
8:00	Family Matters (ABC)	21.0	13.3	26	30
	It Had to Be You (CBS)	7.7	5.9	12	*82
	Against the Grain (NBC)	7.6	5.9	11	*82
	Brisco County Jr. (Fox)	9.0	5.8	11	84
8:30	Family Album (CBS)	7.9	6.1	12	81
	Boy Meets World (ABC)	20.4	12.3	23	37
9:00	Step by Step (ABC)	20.4	12.5	23	*34
	Man From Left Field (CBS)	15.4	10.5	20	*50
	Secrets of Lake Success (NBC)	9.0	7.1	13	75
	Baseball Relief (Fox) (s)	4.8	3.2	6	91
9:30	Hangin' With Mr. Cooper (ABC)	20.6	12.5	23	*34
10:00	20/20 (ABC)	19.3	13.8	26	27

Saturday, October 16, 1993

Time	Program	Viewers	Rating	Share	Rank
8:00	World Series Pre Game 1 (CBS)	15.2	10.2	20	55
	When Harry Met Sally (ABC)	12.0	9.0	16	65
	Mommies (NBC)	12.3	8.5	16	*70
	Cops (Fox)	13.2	8.4	16	72
8:27	World Series Game 1 (CBS)	23.1	15.5	29	12
8:30	Cops 2 (Fox) (r)	13.8	8.8	16	67
	Cafe American (NBC)	12.1	8.5	15	*70
9:00	Empty Nest (NBC)	14.2	10.3	18	*53
	Front Page (Fox)	6.8	5.0	9	87
9:30	Nurses (NBC)	13.9	10.4	18	52
10:00	Commish (ABC)	15.7	11.3	21	*44
	Sisters (NBC)	11.2	8.6	16	69

Sunday, October 17, 1993

Time	Program	Viewers	Rating	Share	Rank
7:00	America's Home Videos (ABC)	19.0	11.7	20	40
	Witness Video (NBC)	9.2	6.2	11	80
	Townsend Television (Fox)	6.4	4.3	7	*89
7:13	60 Minutes (CBS)	27.3	19.7	32	3
7:30	America's Funniest People (ABC)	18.6	10.9	18	48
7:38	Witness Video (NBC)	7.0	4.7	8	88
8:00	seaQuest DSV (NBC)	19.5	11.6	17	*41
	Lois & Clark (ABC)	19.0	11.6	17	*41
	Martin (Fox)	16.4	9.8	15	57
8:13	World Series Pre Game 2 (CBS)	20.2	14.5	23	*20
8:27	World Series Game 2 (CBS)	25.2	17.9	29	6
8:30	Living Single (Fox)	16.9	10.5	15	*50
9:00	Pretty Woman (ABC)	31.9	21.1	33	1
	Message From Nam (NBC)	15.7	11.5	18	43
	Married... With Children (Fox)	15.6	9.9	15	56
9:30	Daddy Dearest (Fox)	9.9	6.6	10	77



By Bonnie Schiffman, ABC
‘GRACE UNDER FIRE’: Kaitlin Cullum, left, and Brett Butler star in No. 9 show.

World Series earns CBS a win

By Robin DeRosa
USA TODAY

Although the World Series forced the delay of several new shows and cost the network millions of dollars, CBS scored big points with the baseball games last week. The network won the ratings race for the fifth week in a row, series games taking places 4-6.

Roseanne reached No. 1 for the first time this season, with *Home Improvement* holding at No. 2 for the second week. In the battle between ABC's top sitcoms, this marks the first time *Roseanne* has beat out *Home Improvement* in five weeks. *Home Improvement* has been in first or second place most weeks this season.

NIELSEN RATINGS

ABC's *Grace Under Fire* tied at No. 9 with CBS' *Murphy Brown* and NBC's *Seinfeld*. *Grace*, along with NBC's *Frasier* (No. 14) and ABC's *NYPD Blue* (No. 17) are the season's most successful new series.

For the first time, ABC's *Lois & Clark* (No. 43) muscled ahead of NBC's *seaQuest DSV* (No. 48) in the race between two new Sunday family shows. But their primary competition, *Murder, She Wrote*, still rules the 8 p.m. ET/PT time period at No. 13.

CBS' *Picket Fences* didn't get a big boost from last month's Emmy wins, making its season debut at No. 60.

Using this chart

▶ Ratings information comes from the A.C. Nielsen Co.

▶ A ratings point represents 942,000 TV households; shares are the percentage of sets in use; number of viewers is in millions.

▶ (*) indicates a Nielsen ratings tie.

▶ (r) indicates a repeat episode.

▶ (s) indicates a special broadcast.

Top 10

- 1 *Roseanne* (ABC)
- 2 *Home Improvement* (ABC)
- 3 *60 Minutes* (CBS)
- 4 *World Series Game 6* (CBS)
- 5 *World Series Game 5* (CBS)
- 6 *World Series Game 4* (CBS)
- 7 *Coach* (ABC)
- 8 *Monday Night Football* (ABC)
- 9 *Grace Under Fire* (ABC)
- * *Murphy Brown* (CBS)
- * *Seinfeld* (NBC)

Bottom 5

- 82 *Roc* (Fox)
- 83 *Bakersfield P.D.* (Fox)
- 84 *Townsend Television* (Fox)
- 85 *Jersey Girl* (Fox)
- 86 *Front Page* (Fox)

Network ratings

For the week:	Season to date:
CBS: 15.2	CBS: 13.8
ABC: 12.3	ABC: 12.8
NBC: 11.6	NBC: 11.1
Fox: 6.9	Fox: 7.1

Evening news

For the week:	Last week:
ABC: 10.1	ABC: 10.3
NBC: 9.2	NBC: 9.0
CBS: 8.4	CBS: 8.2

Monday, October 18, 1993

Time	Program	Viewers	Rating	Share	Rank
8:00	Fresh Prince of Bel-Air (NBC)	21.3	14.3	23	*18
	Evening Shade (CBS)	17.9	12.5	20	*27
	Day One (ABC)	10.0	7.6	13	*72
	Jersey Girl (Fox)	5.1	3.9	6	85
8:30	Blossom (NBC)	20.4	13.8	21	*20
	Dave's World (CBS)	19.2	13.6	21	23
9:00	Murphy Brown (CBS)	23.0	16.6	25	*9
	Monday Night Football (ABC)	22.6	16.8	28	8
	Moment of Truth (NBC)	21.2	15.9	25	12
9:30	Love & War (CBS)	18.7	13.8	21	*20
10:00	Eye to Eye (CBS)	14.9	11.9	20	*33

Tuesday, October 19, 1993

Time	Program	Viewers	Rating	Share	Rank
8:00	Full House (ABC)	22.3	14.5	23	16
	Rescue 911 (CBS)	18.1	12.8	21	26
	Saved by the Bell: College (NBC)	11.8	8.5	14	*67
	Roc (Fox)	7.5	5.2	8	82
8:30	Phenom (ABC)	20.5	13.7	21	22
	Getting By (NBC)	13.1	9.0	14	64
	Bakersfield P.D. (Fox)	6.6	4.7	7	83
9:00	Roseanne (ABC)	31.9	21.7	32	1
	World Series Game 3 (CBS)	20.6	15.2	28	15
	Message From Nam, 2 (NBC)	14.5	11.4	18	38
	America's Most Wanted (Fox)	7.4	5.4	8	80
9:30	Coach (ABC) (r)	25.1	17.5	26	7
10:00	NYPD Blue (ABC)	19.6	14.4	24	17

Wednesday, October 20, 1993

Time	Program	Viewers	Rating	Share	Rank
8:00	Unsolved Mysteries (NBC)	16.8	11.9	19	*33
	Thea (ABC)	17.0	11.2	18	40
	Beverly Hills, 90210 (Fox)	13.9	10.3	16	*50
8:10	World Series Game 4 (CBS)	24.6	18.0	31	6
8:30	Joe's Life (ABC)	16.6	10.7	16	*45
9:00	Home Improvement (ABC) (r)	32.0	20.0	30	2
	Now With Tom and Katie (NBC)	13.3	9.9	15	59
	Melrose Place (Fox)	11.7	8.8	13	66
9:30	Grace Under Fire (ABC)	25.5	16.6	25	*9
10:00	Law & Order (NBC)	16.3	12.3	21	*30
	Moon Over Miami (ABC)	14.7	10.7	18	*45

Thursday, October 21, 1993

Time	Program	Viewers	Rating	Share	Rank
8:00	Matlock: The Fortune (ABC) (r)	17.1	12.5	19	*27
	The Simpsons (Fox)	19.5	11.9	19	*33
	Mad About You (NBC) (r)	15.5	11.1	18	*41
8:10	World Series Game 5 (CBS)	26.1	18.4	30	5
8:30	Wings (NBC) (r)	17.2	12.1	19	32
	Sinbad (Fox)	16.6	10.1	16	*54
9:00	Seinfeld (NBC) (r)	24.3	16.8	25	*9
	In Living Color (Fox)	13.0	8.0	12	*69
9:30	Frasier (NBC)	22.4	15.6	24	14
	Herman's Head (Fox)	9.4	6.4	10	78
10:00	PrimeTime Live (ABC)	18.6	14.3	23	*18
	L.A. Law (NBC)	15.3	11.6	19	36

Friday, October 22, 1993

Time	Program	Viewers	Rating	Share	Rank
8:00	Family Matters (ABC)	17.8	11.3	22	39
	Defense Rests (NBC) (s)	13.4	10.2	19	*52
	Rescue 911 (CBS)	13.0	8.9	17	65
	Brisco County Jr. (Fox)	8.2	5.3	10	81
8:30	Boy Meets World (ABC)	17.1	10.7	20	*45
9:00	Telltale Talk				
	Show Host (NBC) (r)	17.5	12.9	23	25
	Step by Step (ABC)	18.7	11.5	21	37
	Bob (CBS)	10.8	7.5	13	74
	X-Files (Fox)	8.8	5.9	11	79
9:30	Hangin' With				
	Mr. Cooper (ABC)	17.4	11.1	20	*41
	Dave's World (CBS)	11.7	7.9	14	71
10:00	20/20 (ABC)	16.6	12.3	22	*30
	Picket Fences (CBS)	13.9	9.7	18	60

Saturday, October 23, 1993

Time	Program	Viewers	Rating	Share	Rank
8:00	Mermaids (ABC)	12.0	8.5	15	*67
	Mommies (NBC)	11.8	8.0	15	*69
	Cops (Fox)	10.1	6.7	12	*76
8:09	World Series Game 6 (CBS)	28.8	19.0	35	4
8:30	Cafe American (NBC)	11.2	7.6	14	*72
	Cops 2 (Fox) (r)	10.8	7.2	13	75
9:00	Empty Nest (NBC)	14.0	10.1	18	*54
	Front Page (Fox)	5.7	3.8	7	86
9:30	Nurses (NBC)	14.5	10.3	18	*50
10:00	Commish (ABC)	14.4	10.2	19	*52
	Sisters (NBC)	11.5	9.1	17	63

Sunday, October 24, 1993

Time	Program	Viewers	Rating	Share	Rank
7:00	60 Minutes (CBS)	27.0	19.7	34	3
	America's Funniest Home Videos (ABC) (r)	16.4	10.1	18	*54
	Townsend Television (Fox)	6.3	4.1	7	84
7:13	I Witness Video (NBC)	10.4	6.7	11	*76
7:30	America's Funniest People (ABC)	16.4	10.0	17	58
8:00	Murder, She Wrote (CBS)	21.3	15.7	24	13
	Lois & Clark (ABC)	17.6	11.0	17	43
	seaQuest DSV (NBC)	17.9	10.6	16	48
	Martin (Fox)	16.5	10.1	16	*54
8:30	Living Single (Fox)	17.4	10.4	15	49
9:00	Married... With Children (Fox)	21.0	13.2	20	24
	Double Jeopardy (CBS)	16.8	12.4	20	29
	Remember, Part 1 (NBC)	15.1	10.9	18	44
	A Stranger in the Mirror (ABC)	13.2	9.6	16	61
9:30	Daddy Dearest (Fox)	13.8	9.2	15	62

GLENN FREY ARIES SPEED
Cody McMahon is no saint. His partner is no gentleman.
And his secretary is no typist.
When you're L.A.'s newest private eyes,

You trust your doctor to take care of you, but what happens when a doctor...
Catch LATE SHOW

NIELSEN RATINGS

By Robin DeRosa
USA TODAY

ABC usurps CBS as No. 1

ABC bumped CBS out of first place for the first time this season, dominating the top 10 last week with *Home Improvement*, No. 1; *Roseanne*, No. 2; *Coach*, No. 5; *Grace Under Fire*, No. 6; *Monday Night Football*, No. 8; and *PrimeTime Live* No. 9.

PrimeTime Live still rules Thursday's 10 p.m. ET/PT time slot, beating out NBC's *L.A. Law* (No. 40) and CBS' *Picket Fences* (No. 68).

CBS hoped that airing *Picket Fences* Thursday might entice more viewers to tune in Friday. But Friday's show was only No. 63.

Diagnosis Murder premiered at No. 54; *South of Sunset* premiered at No. 85 and has already been canceled.

Using this chart

► Ratings information comes from the A.C. Nielsen Co.

► A ratings point represents 942,000 TV households; shares are the percentage of sets in use; number of viewers is in millions.

► (*) indicates a Nielsen ratings tie.

► (r) indicates a repeat episode.

► (s) indicates a special broadcast.

Top 10

- 1 Home Improvement (ABC)
- 2 Roseanne (ABC)
- 3 60 Minutes (CBS)
- 4 Seinfeld (NBC)
- 5 Coach (ABC)
- 6 Grace Under Fire (ABC)
- 7 Frasier (NBC)
- 8 Monday Night Football (ABC)
- 9 PrimeTime Live (ABC)
- 10 Murder, She Wrote (CBS)

Bottom 5

- 90 Front Page (Fox)
- 91 Bakersfield, P.D. (Fox)
- 92 Herman's Head (Fox)
- 93 Bakersfield, P.D. (Fox)
- 94 Townsend Television (Fox)

Network ratings

For the week:	Season to date:
ABC: 13.4	CBS: 13.5
CBS: 12.0	ABC: 12.9
NBC: 11.0	NBC: 11.1
Fox: 7.7	Fox: 7.2

Evening news

For the week:	Last week:
ABC: 10.2	ABC: 10.1
NBC: 8.9	NBC: 9.2
CBS: 8.8	CBS: 8.4

Monday, October 25, 1993

Time	Program	Viewers	Rating	Share	Rank
8:00	Fresh Prince of Bel-Air (NBC)	20.3	13.5	21	*24
	Evening Shade (CBS)	19.6	13.3	21	*27
	Day One (ABC)	11.7	9.0	15	69
	Rocky Horror Picture Show (Fox)	9.5	6.6	10	*82
8:30	Dave's World (CBS)	20.8	14.5	22	*17
	Blossom (NBC)	19.3	12.5	19	*35
9:00	Monday Night Football (ABC)	23.3	17.4	29	8
	Murphy Brown (CBS)	22.2	15.9	23	11
	Remember Part 2 (NBC)	17.0	13.5	21	*24
9:30	Love & War (CBS)	19.6	14.5	21	*17
10:00	Northern Exposure (CBS)	18.6	14.1	23	22

Tuesday, October 26, 1993

Time	Program	Viewers	Rating	Share	Rank
8:00	Full House (ABC)	23.1	15.0	25	15
	Rescue 911 (CBS)	22.4	14.7	24	16
	Saved by the Bell: College (NBC)	10.9	7.9	13	*73
	Herman's Head (Fox)	5.6	4.3	7	92
8:30	Phenom (ABC)	20.9	14.2	22	21
	Last Halloween (NBC) (r)	10.2	6.6	10	*82
	Bakersfield, P.D. (Fox)	5.8	4.2	7	93
9:00	Roseanne (ABC)	34.5	22.7	34	2
	Misery (CBS)	17.5	12.5	20	*35
	John Larroquette Show (NBC)	10.6	7.5	11	*77
	America's Most Wanted (Fox)	8.0	5.8	9	*88
9:30	Coach (ABC)	28.1	18.8	29	5
	Second Half (NBC)	10.5	7.6	12	*75
10:00	NYPD Blue (ABC)	22.2	15.6	26	12
	Dateline NBC (NBC)	12.7	9.6	16	62

Wednesday, October 27, 1993

Time	Program	Viewers	Rating	Share	Rank
8:00	Home Improvement (ABC)	23.2	15.2	25	14
	Unsolved Mysteries (NBC)	17.8	11.8	19	*43
	Beverly Hills, 90210 (Fox)	15.0	10.5	17	*55
	Hearts Affire (CBS)	11.2	7.9	12	*73
8:30	Joe's Life (ABC)	20.5	13.2	20	29
9:00	Home Improvement (ABC)	40.7	24.4	36	1
	Now With Tom and Katie (NBC)	15.5	11.5	17	46
	Melrose Place (Fox)	12.7	9.3	14	*64
	South of Sunset (CBS)	9.1	6.1	9	*85
9:30	Grace Under Fire (ABC)	29.5	18.7	28	6
10:00	Law & Order (NBC)	16.2	12.3	21	*37
	48 Hours (CBS)	14.6	11.2	19	47
	Moon Over Miami (ABC)	13.4	9.9	17	59

Thursday, October 28, 1993

Time	Program	Viewers	Rating	Share	Rank
8:00	The Simpsons (Fox)	24.0	14.5	24	*17
	Mad About You (NBC)	17.6	12.3	20	*37
	In the Heat of the Night (CBS)	15.2	10.9	18	*50
	Missing Persons (ABC)	10.9	8.3	13	72
8:30	Wings (NBC)	23.3	15.5	25	13
	Martin (Fox) (r)	19.6	11.9	19	42
9:00	Seinfeld (NBC)	31.0	20.4	31	4
	Matlock (ABC)	18.2	13.3	21	*27
	In Living Color (Fox)	14.3	9.3	14	*64
	Connie Chung (CBS)	12.5	9.2	14	*66
9:30	Frasier (NBC)	27.0	18.2	29	7
	Bakersfield, P.D. (Fox)	8.1	5.5	9	91
10:00	PrimeTime Live (ABC)	22.5	16.5	28	9
	L.A. Law (NBC)	15.6	12.0	21	*40
	Picket Fences (CBS)	12.4	9.1	16	68

Friday, October 29, 1993

Time	Program	Viewers	Rating	Share	Rank
8:00	Family Matters (ABC)	21.7	13.7	25	23
	Diagnosis Murder (CBS)	14.6	10.7	20	54
	Brisco County Jr. (Fox)	9.2	6.1	11	*85
	Against the Grain (NBC)	7.7	5.8	11	*88
8:30	Boy Meets World (ABC)	21.3	12.9	24	31
9:00	Step by Step (ABC)	20.0	12.6	23	34
	The Return of Ironside (NBC)	13.8	10.2	18	58
	Bob (CBS)	10.0	7.6	14	*75
	X-Files (Fox)	9.5	5.9	11	87
9:30	Hangin' With Mr. Cooper (ABC)	20.2	12.7	23	*32
	Family Album (CBS)	9.5	7.1	13	81
10:00	20/20 (ABC)	20.7	14.4	26	20
	Picket Fences (CBS)	12.9	9.4	17	63

Saturday, October 30, 1993

Time	Program	Viewers	Rating	Share	Rank
8:00	Dr. Quinn				
	Medicine Woman (CBS)	19.2	12.7	22	*32
	Double, Double, Toil Trouble (ABC)	19.8	10.8	19	53
	Return of TV's Bloopers (NBC) (s)	11.6	8.4	15	71
	Cops (Fox)	10.9	7.5	13	*77
8:30	Cops 2 (Fox) (r)	10.9	7.4	13	79
9:00	Empty Nest (NBC)	14.8	10.5	18	*55
	Harts of the West (CBS)	14.9	9.8	17	60
	Front Page (Fox)	7.6	5.7	10	90
9:30	Nurses (NBC)	15.7	11.0	19	*48
10:00	Sisters (NBC)	16.1	11.8	21	*43
	Walker, Texas Ranger (CBS)	18.1	11.7	21	45
	Paula Poundstone Show (ABC)	10.2	6.6	12	*82

Sunday, October 31, 1993

Time	Program	Viewers	Rating	Share	Rank
7:00	60 Minutes (CBS)	30.8	22.1	35	3
	America's Home Videos (ABC)	15.2	9.7	16	61
	I Witness Video (NBC) (r)	11.2	7.2	12	80
	Townsend Television (Fox)	6.9	4.1	7	94
7:30	America's Funniest People (ABC)	14.1	8.7	14	70
8:00	Murder, She Wrote (CBS)	22.4	16.2	24	10
	Simpsons (Fox) (r)	19.2	10.9	16	*50
	seaQuest DSV (NBC)	17.4	10.4	15	57
	Lois & Clark (ABC)	15.2	9.2	14	*66
8:30	Simpsons (Fox) (r)	21.7	12.0	17	*40
9:00	Columbo: It's All In the Game (ABC)	18.8	13.4	21	26
	No Child of Mine (CBS)	17.6	13.1	21	30
	Simpsons (Fox) (r)	21.1	12.3	18	*37
	One Good Cop (NBC)	16.1	11.0	18	*48
9:30	Simpsons (Fox) (r)	18.8	10.9	17	*50

NIELSEN RATINGS

Using this chart

▶ Ratings information comes from the A.C. Nielsen Co.

▶ A ratings point represents 942,000 TV households; shares are the percentage of sets in use; number of viewers is in millions.

▶ (*) indicates a Nielsen ratings tie.

▶ (r) indicates a repeat episode.

▶ (s) indicates a special broadcast.

Top 10

- 1 Home Improvement (ABC)
 - 2 60 Minutes (CBS)
 - 3 Seinfeld (NBC)
 - 4 Roseanne (ABC)
 - 5 Frasier (NBC)
 - 6 Grace Under Fire (ABC)
 - 7 Coach (ABC)
 - 8 Ghost (CBS)
 - 9 20/20 (ABC)
 - 10 Monday Night Football (ABC)
- * Dances with Wolves, Pt. 1

Bottom 5

- 93 Roc (Fox)
- 94 Family Album (CBS)
- 95 Bakersfield P.D. (Fox)
- 96 Paula Poundstone Show (ABC)
- 97 Townsend Television (Fox)

Network ratings

For the week:	Season to date:
ABC: 12.9	CBS: 13.3
CBS: 12.3	ABC: 12.9
NBC: 12.0	NBC: 11.3
Fox: 7.4	Fox: 7.2

Evening news

For the week:	Last week:
ABC: 10.9	ABC: 10.2
NBC: 10.0	NBC: 8.9
CBS: 9.7	CBS: 8.8

Monday, November 1, 1993

	Viewers	Rating	Share	Rank
8:00 Fresh Prince of Bel-Air (NBC)	22.2	14.6	22	*18
Evening Shade (CBS)	20.3	14.0	21	*24
Day One (ABC)	14.2	10.6	18	52
Ghost Mom (Fox)	9.5	6.0	9	*86
8:30 Dave's World (CBS)	20.6	14.1	21	23
Blossom (NBC)	21.4	14.3	21	*21
9:00 Murphy Brown (CBS)	22.4	16.3	24	12
House of Secrets (NBC)	19.7	14.6	23	*18
Monday Night Football (ABC)	22.6	16.4	26	*10
9:30 Love & War (CBS)	18.1	13.5	20	*27
10:00 Northern Exposure (CBS)	19.3	14.5	24	20

Tuesday, November 2, 1993

	Viewers	Rating	Share	Rank
8:00 Rescue 911 (CBS)	20.7	13.5	21	*27
Full House (ABC)	20.8	13.5	21	*27
Saved by the Bell: College (NBC)	10.2	7.4	12	78
Roc (Fox)	7.8	5.1	8	93
8:30 Phenom (ABC)	16.7	11.2	17	47
Getting By (NBC)	10.7	7.3	11	79
Bakersfield, P.D. (Fox)	6.9	4.6	7	95
9:00 Roseanne (ABC)	29.4	18.9	29	4
Conviction: K Dodds (CBS)	18.7	13.2	21	31
John Larroquette Show (NBC)	12.7	8.6	13	*67
America's Most Wanted (Fox)	8.1	5.5	8	*90
9:30 Coach (ABC)	25.2	16.7	26	7
Second Half (NBC)	9.8	7.0	11	80
10:00 NYPD Blue (ABC)	19.7	14.3	24	*21
Dateline NBC (NBC)	11.7	8.7	15	*65

Wednesday, November 3, 1993

	Viewers	Rating	Share	Rank
8:00 Hearts Afire (CBS)	12.9	9.4	15	*60
Unsolved Mysteries (NBC)	22.2	15.0	24	16
Thea (ABC)	14.6	10.0	16	57
Beverly Hills, 90210 (Fox)	16.3	11.5	18	44
8:30 Joe's Life (ABC)	13.9	9.2	14	*62
Nanny (CBS)	15.0	11.1	17	48
9:00 Home Improvement (ABC)	35.8	22.3	33	1
Melrose Place (Fox)	13.8	10.3	16	54
Now With Tom and Katie (NBC)	16.9	12.4	19	*37
How'd They Do That? (CBS) (s)	8.4	6.0	9	*86
9:30 Grace Under Fire (ABC)	25.6	17.1	26	6
10:00 Law & Order (NBC)	14.9	11.3	20	46
Moon Over Miami (ABC)	11.6	8.7	16	*65
48 Hours (CBS)	17.5	12.9	23	*34

Thursday, November 4, 1993

	Viewers	Rating	Share	Rank
8:00 The Simpsons (Fox)	21.7	13.1	21	*32
In the Heat of the Night (CBS)	18.0	12.3	19	*39
Mad About You (NBC)	18.9	12.8	20	36
Missing Persons (ABC)	12.2	8.6	13	*67
8:30 Wings (NBC)	24.0	15.9	25	13
Sinbad Show (Fox)	15.3	9.7	15	*58
9:00 Seinfeld (NBC)	31.1	20.2	31	3
Matlock (ABC)	16.9	12.2	19	41
Top Cops (CBS) (s)	12.7	8.8	13	64
In Living Color (Fox)	12.4	8.0	12	*73
9:30 Frasier (NBC)	27.1	18.0	28	5
Herman's Head (Fox)	9.0	6.1	9	*83
10:00 PrimeTime Live (ABC)	20.2	14.9	26	17
L.A. Law (NBC)	17.7	12.9	22	*34
Eye to Eye (CBS)	11.7	8.6	15	*67

Friday, November 5, 1993

	Viewers	Rating	Share	Rank
8:00 Family Matters (ABC)	22.7	13.9	25	26
Against the Grain (NBC)	8.6	5.9	10	89
Diagnosis: Murder (CBS)	12.7	9.4	16	*60
Brisco County Jr. (Fox)	9.4	6.0	10	*86
8:30 George (ABC) (s)	22.2	13.5	23	*27
9:00 Step by Step (ABC)	20.9	12.4	21	*37
Bob (CBS)	7.6	5.5	9	*90
Hart to Hart				
Returns (NBC)	18.5	13.1	23	*32
X-Files (Fox)	10.0	6.6	11	82
9:30 Hangin' With Mr. Cooper (ABC)	19.7	12.0	20	42
Family Album (CBS)	6.8	5.0	9	94
10:00 20/20 (ABC)	24.5	16.5	29	9
Picket Fences (CBS)	11.0	8.0	14	*73

Saturday, November 6, 1993

	Viewers	Rating	Share	Rank
8:00 Dr. Quinn, Medicine Woman (CBS)	22.2	14.0	24	*24
George (ABC)	9.4	6.1	11	*83
Mommies (NBC)	10.9	7.5	13	77
Cops (Fox)	12.9	8.0	14	*73
8:30 Cafe Americain (NBC)	11.3	7.7	13	76
Cops 2 (Fox) (r)	13.3	8.4	14	71
Where I Live (ABC)	8.7	5.4	9	92
9:00 Harts of the West (CBS)	16.9	10.4	18	53
Empty Nest (NBC)	16.2	11.4	20	45
Front Page (Fox)	9.2	6.1	11	*83
Paula Poundstone Show (ABC)	6.0	3.9	7	96
9:30 Nurses (NBC)	17.2	12.3	22	*39
10:00 Walker, Texas Ranger (CBS)	17.5	11.0	20	49
Commish (ABC)	12.7	8.5	16	70
Sisters (NBC)	14.4	10.7	20	51

Sunday, November 7, 1993

	Viewers	Rating	Share	Rank
7:00 America's Funniest Home Videos (ABC)	19.7	11.8	19	43
Townsend Television (Fox)	5.7	3.7	6	97
60 Minutes (CBS)	29.8	21.2	33	2
7:05 I Witness Video (NBC)	12.7	8.2	13	72
7:30 America's Funniest People (ABC)	18.4	10.9	17	50
8:00 seaQuest DSV (NBC)	17.5	10.1	14	*55
Dances With Wolves (ABC)	26.1	16.4	24	*10
Martin (Fox)	15.4	9.2	13	*62
Murder, She Wrote (CBS)	21.4	15.5	22	14
8:30 Living Single (Fox)	16.3	9.7	14	*58
9:00 Married ... With Children (Fox)	15.6	10.1	14	*55
A Matter of Justice, Part 1 (NBC)	21.5	15.2	23	15
Ghost (CBS)	24.7	16.6	24	8
9:30 Daddy Dearest (Fox)	10.0	6.7	10	81

Who built the great sphinx? NBC takes a look

By Tim Friend
USA TODAY

Could the great sphinx of Egypt be twice as old as previously believed and possibly

built by a lost civilization?

NBC's *Mystery of the Sphinx*, 9 ET/PT tonight, presents that new theory by Egyptologist John Anthony West and Boston University geologist

Robert Schoch.

Their theory, substantiated through the study of ancient weather and erosion patterns, says the sphinx was built 10,000 years ago instead of in 2500

B.C. by an Egyptian pharaoh.

The mystery: Who built it?

Charlton Heston narrates; Robert Watts (*Indiana Jones* movies) and Boris Said (*Dolphins*) are producers.

Walters gives ABC a special boost

By Robin DeRosa
USA TODAY

ABC ruled the ratings race for the third consecutive week, thanks in part to *The Barbara Walters Special* (No. 3), which featured interviews with newlywed film star Julia Roberts, *Home Improvement's* Tim Allen and singer Whitney Houston. This

NIELSEN RATINGS

was the best performance of a Walters special since March 26, 1990, when the ABC talkmeister chatted with Arnold Schwarzenegger, Warren Beatty and Chevy Chase.

Along with Walters' special, ABC claimed half of the top 10, with *Home*

Improvement (No. 2), *Roseanne* (No. 6), *Coach* (No. 8) and *Dances With Wolves Part 2* (No. 10).

CBS' special *60 Minutes ... 25 Years* took the week's top spot. And, though *Return to Lonesome Dove Part 1* (No. 7) didn't live up to its predecessor, it was still the season's highest-rated CBS Sunday Movie.

But of all TV movies for the week, it

looks like NBC Vice President Preston Beckman's strategy that "fact is stranger than fiction" paid off. *A Matter of Justice Part 2*, about a couple caught in a real-life custody battle in the wake of their son's murder, was the highest-rated TV movie for the week at No. 5, beating out ABC's *A Mother's Revenge* (No. 50) and NBC's *Backdraft* (No. 14).

Using this chart

► Ratings information comes from the A.C. Nielsen Co.

► A ratings point represents 942,000 TV households; shares are the percentage of sets in use; number of viewers is in millions.

► (*) indicates a Nielsen ratings tie.

► (r) indicates a repeat episode.

► (s) indicates a special broadcast.

Top 10

- 60 Minutes (CBS)
- Home Improvement (ABC)
- Barbara Walters Special (ABC)
- Seinfeld (NBC)
- A Matter of Justice Pt. 2 (NBC)
- Roseanne (ABC)
- Return to Lonesome Dove Pt. 1 (CBS)
- Coach (ABC)
- Frasier (NBC)
- Dances With Wolves Pt. 2 (ABC)

Bottom 5

- 86 Against the Grain (NBC)
- 87 Roc (Fox)
- 88 Townsend Television (Fox)
- 89 Bakersfield P.D. (Fox)
- 90 America's Most Wanted (Fox)

Network ratings

For the week:	Season to date:
ABC: 13.5	CBS: 13.2
CBS: 12.7	ABC: 13.0
NBC: 12.6	NBC: 11.4
Fox: 7.6	Fox: 7.3

Evening news

For the week:	Last week:
ABC: 11.1	ABC: 10.9
NBC: 10.2	NBC: 10.0
CBS: 9.7	CBS: 9.7

Monday, November 8, 1993

	Viewers	Rating	Share	Rank
8:00 Fresh Prince of Bel-Air (NBC)	23.6	15.7	24	13
Evening Shade (CBS)	18.9	13.0	20	*28
Day One (ABC)	13.3	10.0	16	54
Stopt Or My Mon ^a				
Will Shoot (Fox)	14.4	8.9	13	*63
8:30 Blossom (NBC)	21.4	14.4	21	21
Dave's World (CBS)	19.9	13.8	20	25
9:00 A Matter of Justice Pt. 2 (NBC)	26.7	19.4	29	5
Monday Night Football (ABC)	22.3	16.3	28	11
Murphy Brown (CBS)	20.7	15.0	21	18
9:30 Love & War (CBS)	17.2	12.7	18	30
10:00 Northern Exposure (CBS)	16.1	11.8	19	*40

Tuesday, November 9, 1993

	Viewers	Rating	Share	Rank
8:00 Full House (ABC)	25.5	15.5	24	15
Victim of Love (NBC)	18.1	13.0	19	*28
Rescue 911 (CBS)	19.6	12.5	19	32
Roc (Fox)	6.7	4.7	7	87
8:30 Phenom (ABC)	22.9	14.6	22	19
Die Hard 2 (CBS)	18.7	12.4	19	*33
Bakersfield P.D. (Fox)	5.0	3.7	6	89
9:00 Roseanne (ABC)	28.6	19.2	28	6
America's Most Wanted (Fox)	4.6	3.4	5	90
9:30 Coach (ABC)	26.1	17.9	26	8
10:00 Barbara Walters (ABC) (s)	27.2	20.2	32	3
Dateline (NBC)	11.0	8.4	13	68

Wednesday, November 10, 1993

	Viewers	Rating	Share	Rank
8:00 Home Improvement (ABC)	32.9	20.4	32	2
Unsolved Mysteries (NBC)	18.0	12.4	19	*33
Beverly Hills, 90210 (Fox)	17.0	11.6	18	43
Hearts Afire (CBS)	8.2	5.8	9	84
8:30 Joe's Life (ABC)	22.7	14.3	22	*22
Nanny (CBS)	11.6	8.1	12	70
9:00 Dances With Wolves Pt. 2 (ABC)	24.7	16.5	26	10
Mystery of Sphinx (NBC) (s)	19.9	13.3	20	26
Melrose Place (Fox)	15.4	10.6	16	*50
In the Heat of the Night (CBS)	13.1	9.5	14	57
10:00 48 Hours (CBS)	15.3	11.7	19	42
Law & Order (NBC)	14.4	10.6	18	*50

Thursday, November 11, 1993

	Viewers	Rating	Share	Rank
8:00 Matlock (ABC)	20.5	14.5	22	20
The Wizard of Oz (CBS) (r)	20.7	11.9	18	*37
Mad About You (NBC)	17.2	11.9	19	*37
The Simpsons (Fox)	18.7	11.8	18	*40
8:30 Wings (NBC)	20.7	14.1	21	24
Sinbad Show (Fox)	13.9	8.8	13	*65
9:00 Seinfeld (NBC)	29.7	19.6	29	4
Missing Persons (ABC)	16.6	12.2	18	*35
In Living Color (Fox)	10.8	7.6	11	71
9:30 Frasier (NBC)	25.0	16.8	25	9
Herman's Head (Fox)	7.8	5.9	9	*82
10:00 PrimeTime Live (ABC)	22.2	16.2	28	12
L.A. Law (NBC)	16.2	11.9	21	*37
10:10 Connie Chung (CBS)	9.9	7.1	13	73

Friday, November 12, 1993

	Viewers	Rating	Share	Rank
8:00 Family Matters (ABC)	25.0	15.3	28	16
Diagnosis Murder (CBS)	12.5	8.8	16	*65
Brisco County Jr. (Fox)	9.9	6.4	11	*77
Against the Grain (NBC)	7.4	5.3	10	86
8:30 Boy Meets World (ABC)	22.0	13.2	23	27
9:00 Step by Step (ABC)	21.0	12.6	22	31
Jack Reed: Badge of Honor (NBC)	15.7	11.3	20	46
X-Files (Fox)	10.7	6.5	11	76
Bob (CBS)	8.3	6.4	11	*77
9:30 Hangin' With Mr. Cooper (ABC)	20.0	12.2	21	*35
Family Album (CBS)	8.0	6.0	11	*80
10:00 20/20 (ABC)	21.5	15.2	27	17
Picket Fences (CBS)	13.1	9.2	16	60

Saturday, November 13, 1993

	Viewers	Rating	Share	Rank
8:00 Dr. Quinn				
Medicine Woman (CBS)	21.5	14.3	25	*22
Cops (Fox)	13.2	8.2	15	69
Mommies (NBC)	10.5	7.2	13	72
George (ABC)	8.9	6.1	11	79
8:30 Cops 2 (Fox) (r)	14.7	8.8	15	*65
Cafe American (NBC)	10.0	6.7	12	75
Where I Live (ABC)	8.6	6.0	10	*80
9:00 Empty Nest (NBC)	15.3	10.8	19	49
Harts of the West (CBS)	14.2	9.3	16	59
Matlock (ABC) (r)	7.9	5.9	10	*82
Front Page (Fox)	8.6	5.5	10	85
9:30 Nurses (NBC)	16.1	11.4	20	45
10:00 Commish (ABC)	16.4	11.0	20	47
Walker, Texas Ranger (CBS)	15.6	10.2	19	53
Sisters (NBC)	12.7	9.8	18	56

Sunday, November 14, 1993

	Viewers	Rating	Share	Rank
7:00 America's Home Videos (ABC)	18.5	11.5	18	44
I Witness Video (NBC)	11.1	6.9	11	74
Townsend Television (Fox)	5.9	3.8	6	88
7:30 60 Minutes (CBS) (s)	35.9	24.8	36	1
America's Funniest People (ABC)	16.2	9.9	15	55
8:00 Backdraft (NBC)	25.9	15.6	23	14
Lois & Clark (ABC)	15.2	9.0	13	*61
Martin (Fox)	14.9	9.0	13	*61
8:30 Living Single (Fox)	15.0	9.4	13	58
9:00 Married ... With Children (Fox)	16.1	10.9	15	48
A Mother's Revenge (ABC)	14.8	10.6	16	*50
9:11 Return to Lonesome Dove (CBS)	27.4	18.1	28	7
9:30 Married ... With Children (Fox) (r)	12.6	8.9	13	*63



CBS sweeps back to top

By Robin DeRosa
USA TODAY

After three weeks, CBS regained the top spot in the ratings race last week,

CBS
RICHARD THOMAS: Waltons' reunion was a ratings winner, coming in at No. 4.

putting it in the lead for November sweeps. Helping CBS to victory was *60 Minutes*, rated No. 1, and *A Walton Thanksgiving Reunion*, No. 4.

Though *Return to Lonesome Dove* did not draw as large an audience as the original, which had a four-night average 26.1 rating in 1989, Tuesday's *Part 2* was No. 12, with a 16.5 rating; Thurs-

NIELSEN RATINGS

day's *Part 3* was No. 17 with a 15.2. The 30th anniversary of the Kennedy assassination brought a plethora of specials, but none did very well.

NBC's *Fatal Deception: Mrs. Lee Harvey Oswald* ranked the highest at No. 44. *CBS Reports: Who Killed JFK?* was No. 58, and ABC's highly promoted *JFK: Reckless Youth, Part 1* was a surprising No. 71.

Using this chart

► Ratings information comes from the A.C. Nielsen Co.

► A ratings point represents 942,000 TV households; shares are the percentage of sets in use; number of viewers is in millions.

► (*) indicates a Nielsen ratings tie.

► (r) indicates a repeat episode.

► (s) indicates a special broadcast.

Monday, November 15, 1993

Time	Program	Viewers	Rating	Share	Rank
8:00	Fresh Prince of Bel-Air (NBC)	25.7	15.7	24	14
	Evening Shade (CBS)	19.8	13.6	21	33
	Day One (ABC)	14.1	10.1	17	*52
	Fabulous Baker Boys (Fox)	5.8	4.5	7	84
8:30	Dave's World (CBS)	21.6	15.0	22	*20
	Blossom (NBC)	23.2	14.3	21	*26
9:00	Murphy Brown (CBS)	24.7	17.5	26	8
	Monday Night Football (ABC)	23.0	16.6	27	11
	Fatal Deception (NBC)	15.3	11.2	18	*44
9:30	Love & War (CBS)	21.0	15.1	23	*18
10:00	Northern Exposure (CBS)	21.2	15.4	25	15

Tuesday, November 16, 1993

Time	Program	Viewers	Rating	Share	Rank
8:00	Full House (ABC)	23.9	15.3	24	16
	Rescue 911 (CBS)	23.3	15.0	23	*20
	Seventies Celebration (NBC) (s)	13.3	9.4	14	57
	Roc (Fox)	8.7	5.8	9	*77
8:30	Phenom (ABC)	23.0	14.4	22	25
	Bakersfield P.D. (Fox)	6.5	4.3	7	86
9:00	Roseanne (ABC)	33.0	21.8	32	3
	Return to Lonesome Dove, Part 2 (CBS) (s)	24.7	16.5	25	12
	America's Most Wanted (Fox)	7.7	5.1	8	80
9:30	Coach (ABC)	29.4	20.1	30	*4
10:00	NYPD Blue (ABC)	19.8	14.0	23	*28
	Dateline NBC (NBC)	14.9	11.4	18	43

Wednesday, November 17, 1993

Time	Program	Viewers	Rating	Share	Rank
8:00	Unsolved Mysteries (NBC)	20.1	14.0	22	*28
	Beverly Hills, 90210 (Fox)	17.8	12.6	20	38
	Thea (ABC)	15.1	9.7	15	55
	Hearts Afire (CBS)	10.7	8.1	13	69
8:30	Joe's Life (ABC)	14.3	9.3	14	*58
	The Nanny (CBS)	12.7	9.2	14	*60
9:00	Home Improvement (ABC)	36.4	22.2	33	2
	Melrose Place (Fox)	16.0	11.2	17	*44
	Now With Tom and Katie (NBC)	13.3	10.1	15	*52
	Jack (CBS) (s)	10.8	8.8	14	65
9:30	Grace Under Fire (ABC)	27.4	17.3	26	9
10:00	Law & Order (NBC)	15.6	11.7	20	40
	Moon Over Miami (ABC)	11.0	7.9	14	70

Thursday, November 18, 1993

Time	Program	Viewers	Rating	Share	Rank
8:00	Return to Lonesome Dove, Part 3 (CBS) (s)	23.4	15.2	24	17
	Matlock (ABC)	18.5	13.4	20	34
	The Simpsons (Fox)	20.1	13.0	20	*35
	Mad About You (NBC)	16.1	11.6	18	41
8:30	Wings (NBC)	19.9	13.8	21	*31
	Sinbad Show (Fox)	16.0	10.3	16	*48
9:00	Seinfeld (NBC)	27.7	19.1	28	7
	In Living Color (Fox)	12.7	8.3	12	*66
9:30	Frasier (NBC)	23.2	16.3	24	13
	Herman's Head (Fox)	10.4	7.5	11	72
10:00	PrimeTime Live (ABC)	20.4	15.0	25	*20
	L.A. Law (NBC)	13.4	10.3	17	*48

Friday, November 19, 1993

Time	Program	Viewers	Rating	Share	Rank
8:00	Family Matters (ABC)	21.9	13.8	25	*31
	Diagnosis Murder (CBS)	12.4	9.1	16	*62
	I Witness Video (NBC)	10.6	7.4	13	73
	Brisco County Jr. (Fox)	8.9	5.8	10	*77
8:30	Boy Meets World (ABC)	21.2	13.0	23	*35
9:00	Step by Step (ABC)	23.9	14.5	25	24
	Fugitive Nights (NBC)	15.7	11.5	20	42
	CBS Reports: Who Killed JFK? (CBS) (s)	12.2	9.3	16	*58
	X-Files (Fox)	8.8	5.4	9	79
9:30	Hangin' With Mr. Cooper (ABC)	22.7	13.9	24	30
10:00	20/20 (ABC)	21.9	14.8	27	23

Saturday, November 20, 1993

Time	Program	Viewers	Rating	Share	Rank
8:00	Dr. Quinn				
	Medicine Woman (CBS)	27.5	17.2	29	10
	Cops (Fox)	12.8	8.3	14	*66
	Mommies (NBC)	10.4	6.8	12	*74
	George (ABC)	7.4	4.7	8	83
8:30	Cops 2 (Fox) (r)	13.6	9.0	15	64
	Cafe Americain (NBC)	10.0	6.3	11	76
	Where I Live (ABC)	7.9	4.9	8	81
9:00	Empty Nest (NBC)	13.2	8.2	14	68
	Front Page (Fox)	10.0	6.8	11	*74
	Matlock (ABC) (r)	6.5	4.4	7	85
9:30	Nurses (NBC)	14.3	9.2	15	*60
10:00	Walker, Texas Ranger (CBS)	20.1	12.9	23	37
	Commish (ABC)	15.2	10.1	18	*52
	Sisters (NBC)	13.9	9.6	17	56

Sunday, November 21, 1993

Time	Program	Viewers	Rating	Share	Rank
7:00	60 Minutes (CBS)	31.3	22.4	35	1
	America's Funniest Home Videos (ABC)	24.7	14.3	22	*26
	Code 3 (Fox)	7.3	4.8	7	82
7:04	Disney Kids Day (NBC) (s)	5.7	3.8	6	87
8:00	Murder, She Wrote (CBS)	27.0	19.5	28	6
	Lois & Clark (ABC)	18.6	11.0	16	46
	Martin (Fox)	17.8	10.2	15	51
	seaQuest DSV (NBC)	16.0	9.1	13	*62
8:30	Living Single (Fox)	17.9	10.6	15	47
9:00	Walton Thanksgiving Reunion (CBS)	30.6	20.1	30	*4
	A Family Torn Apart (NBC)	22.7	15.1	23	*18
	Married... With Children (Fox)	19.4	11.9	17	39
	JFK: Reckless Youth, Part 1 (ABC)	10.8	7.8	12	71
9:30	Married... With Children (Fox) (r)	16.4	10.3	15	*48

Top 10

- 60 Minutes (CBS)
- Home Improvement (ABC)
- Roseanne (ABC)
- A Walton Thanksgiving Reunion (CBS)
- Coach (ABC)
- Murder, She Wrote (CBS)
- Seinfeld (NBC)
- Murphy Brown (CBS)
- Grace Under Fire (ABC)
- Dr. Quinn, Medicine Woman (CBS)

Bottom 5

- George (ABC)
- Fabulous Baker Boys (Fox)
- Matlock (ABC)
- Bakersfield P.D. (Fox)
- Disney Kids Day (NBC)

Network ratings

For the week:	Season to date:
CBS: 14.7	CBS: 13.4
ABC: 12.5	ABC: 12.9
NBC: 11.0	NBC: 11.4
Fox: 7.7	Fox: 7.3

Evening news

For the week:	Last week:
ABC: 11.0	ABC: 11.1
CBS: 10.1	NBC: 10.2
NBC: 9.7	CBS: 9.7

Thanksgiving week tie for NBC, CBS

By Robin DeRosa
USA TODAY

NIELSEN RATINGS

As the November sweeps go down to the wire, CBS is taking the lead with a sweeps-to-date rating of 13. ABC follows at 12.5 and NBC is in last place, with 11.9. Final sweeps rankings will be released Thursday.

But NBC, reaching its highest ratings this season, tied CBS for first place during the week ending Sunday. Helping NBC to the top were the Christmas comedy *Home Alone* (No. 3); *Bonanza: The Return* (No. 6); and

the Markie Post/Corbin Bernsen TV movie, *Beyond Suspicion* (No. 12).

CBS' *60 Minutes* retained the No. 1 spot for the third consecutive week. Other CBS programs in the top 10: *Murder, She Wrote* (No. 7), *Murphy Brown* (No. 8) and *Dr. Quinn, Medicine Woman* (No. 10).

Though ABC fell to last place last

week, it fared well with the Oprah Winfrey movie, *There Are No Children Here*, No. 5. The second part of ABC's *JFK: Reckless Youth* was No. 52, an improvement from last week's Part 1, which came in at No. 71.

The latest entry in NBC's Friday Night Mystery series, *Staying Afloat*, ranked an unimpressive No. 52.

Using this chart

► Ratings information comes from the A.C. Nielsen Co.

► A ratings point represents 942,000 TV households; shares are the percentage of sets in use; number of viewers is in millions.

► (*) indicates a Nielsen ratings tie.

► (r) indicates a repeat episode.

► (s) indicates a special broadcast.

Top 10

- 60 Minutes (CBS)
- Home Improvement (ABC)
- Home Alone (NBC)
- Roseanne (ABC)
- There Are No Children Here (ABC)
- Bonanza: The Return (NBC)
- Murder, She Wrote (CBS)
- Murphy Brown (CBS)
- Grace Under Fire (ABC)
- Dr. Quinn, Medicine Woman (CBS)

Bottom 5

- Missing Persons (ABC)
- Roc (Fox)
- In Living Color (Fox)
- Sinbad (Fox)
- Bakersfield, P.D. (Fox)

Network ratings

For the week:	Season to date:
CBS: 12.1	CBS: 13.3
NBC: 12.1	ABC: 12.8
ABC: 11.8	NBC: 11.5
Fox: 7.6	Fox: 7.3

Evening news

For the week:	Last week:
ABC: 10.2	ABC: 11.0
NBC: 10.1	CBS: 10.1
CBS: 10.0	NBC: 9.7

Monday, November 22, 1993

	Viewers	Rating	Share	Rank
8:00 Fresh Prince of Bel-Air (NBC)	20.3	13.4	21	*17
Evening Shade (CBS)	19.4	13.3	20	19
Beethoven (Fox)	18.4	10.6	16	*38
Day One (ABC)	12.6	9.5	15	*52
8:30 Dave's World (CBS)	19.8	13.7	20	16
Blossom (NBC)	18.5	12.5	19	*23
9:00 Murphy Brown (CBS)	21.2	15.1	22	8
Monday Night Football (ABC)	20.2	14.6	23	11
Beyond Suspicion (NBC)	18.9	14.4	22	12
9:30 Love & War (CBS)	18.0	13.4	20	*17
10:00 Northern Exposure (CBS)	19.2	14.0	23	13

Tuesday, November 23, 1993

	Viewers	Rating	Share	Rank
8:00 Full House (ABC)	21.6	13.8	22	*14
Rescue 911 (CBS)	20.2	13.2	21	*20
Saved by the Bell: College (NBC)	10.4	7.4	12	70
Roc (Fox)	7.3	5.2	8	*80
8:30 Roseanne (ABC)	28.0	18.1	28	4
Getting By (NBC)	7.6	5.5	9	*77
Bakersfield, P.D. (Fox)	4.9	3.7	6	84
9:00 Nurses on the Line (CBS)	19.2	13.2	22	*20
John Larroquette Show (NBC)	16.3	10.9	17	35
JFK: Reckless Youth Pt. 2 (ABC)	12.5	9.5	16	*52
America's Most Wanted (Fox)	8.3	5.7	9	76
9:30 Second Half (NBC)	14.9	10.6	17	*38
10:00 Dateline NBC (NBC)	15.9	11.9	21	*28

Wednesday, November 24, 1993

	Viewers	Rating	Share	Rank
8:00 Unsolved Mysteries (NBC)	18.7	12.5	21	*23
Beverly Hills, 90210 (Fox)	15.3	10.0	17	46
Thea (ABC)	14.8	9.3	16	*56
Hearts Afire (CBS)	10.3	7.2	13	71
8:30 Joe's Life (ABC)	13.8	8.7	15	61
Nanny (CBS)	11.5	7.9	13	*66
9:00 Home Improvement (ABC)	34.7	19.6	31	2
Comedy Hall of Fame (NBC) (s)	15.9	10.6	18	*38
Walker, Texas Ranger (CBS)	13.3	8.9	14	60
Melrose Place (Fox)	12.1	8.3	13	65
9:30 Grace Under Fire (ABC)	25.9	15.0	24	9
10:00 Gala at Ford's Theater (ABC) (s)	16.9	11.2	20	32
48 Hours (CBS)	14.2	9.7	17	*50

Thursday, November 25, 1993

	Viewers	Rating	Share	Rank
8:00 Home Alone (NBC)	38.4	19.1	36	3
In the Heat of the Night (CBS)	13.7	8.6	17	*62
Simpsons Thanksgiving (Fox) (s)	12.5	6.4	13	74
Missing Persons (ABC)	8.6	5.2	10	*80
8:30 Sinbad Show (Fox)	8.2	4.5	9	83
9:00 Murder, She Wrote (CBS)	11.5	7.7	14	68
Matlock (ABC)	11.1	7.0	13	72
In Living Color (Fox)	9.0	5.5	10	*77
9:30 In Living Color (Fox)	7.6	4.7	8	82
10:00 PrimeTime Live (ABC)	19.3	12.2	23	26
Mariah Carey (NBC) (s)	19.0	11.0	21	34

Friday, November 26, 1993

	Viewers	Rating	Share	Rank
8:00 Family Matters (ABC)	18.3	11.4	20	31
Circus of the Stars (CBS) (s)	17.1	10.1	18	*44
This Is Your Life (NBC) (s)	13.1	9.0	16	59
Ninja Turtles II (Fox)	10.5	6.0	10	75
8:30 Boy Meets World (ABC)	15.8	9.9	17	47
9:00 Step by Step (ABC)	16.8	10.5	18	*42
Staying Afloat (NBC)	13.7	9.5	17	*52
9:30 Hangin' With Mr. Cooper (ABC)	16.5	10.5	18	*42
10:00 20/20 (ABC)	21.2	13.8	25	*14
Picket Fences (CBS)	14.3	9.3	17	*56

Saturday, November 27, 1993

	Viewers	Rating	Share	Rank
8:00 Dr. Quinn				
Medicine Woman (CBS)	24.0	14.7	25	10
Music Awards Anniv. (ABC) (s)	14.8	9.4	16	55
Cops (Fox)	14.1	7.9	14	*66
Mommies (NBC)	11.7	7.5	13	69
8:30 Cops 2 (Fox) (r)	15.2	8.6	15	*62
Cafe American (NBC)	10.1	6.5	11	73
9:00 Dr. Quinn				
Medicine Woman (CBS) (s)	20.2	12.4	21	25
Empty Nest (NBC)	16.0	10.1	17	*44
Front Page (Fox)	9.0	5.4	9	79
9:30 Nurses (NBC)	17.2	11.1	19	33
10:00 Walker, Texas Ranger (CBS)	19.3	12.1	22	27
Commish (ABC)	17.3	10.8	19	36
Sisters (NBC)	14.0	9.7	17	*50

Sunday, November 28, 1993

	Viewers	Rating	Share	Rank
7:00 America's Home Videos (ABC)	19.6	11.9	18	*28
Back to Bonanza (NBC)	17.1	10.7	16	37
Beethoven (Fox)	17.6	9.8	14	*48
7:14 60 Minutes (CBS)	30.3	21.4	32	1
7:30 America's Funniest People (ABC)	15.6	9.1	13	58
8:00 Lois & Clark (ABC)	20.0	11.5	16	30
seaQuest DSV (NBC)	18.0	10.6	15	*38
8:14 Murder, She Wrote (CBS)	25.0	17.5	25	7
9:00 There Are No Children Here (ABC)	26.8	17.8	26	5
Bonanza: The Return (NBC)	28.1	17.6	26	6
Married... With Children (Fox)	15.4	9.8	14	*48
9:14 Indiana Jones and the Last Crusade (CBS)	20.1	13.2	21	*20
9:30 Married... With Children (Fox)	12.9	8.5	12	64