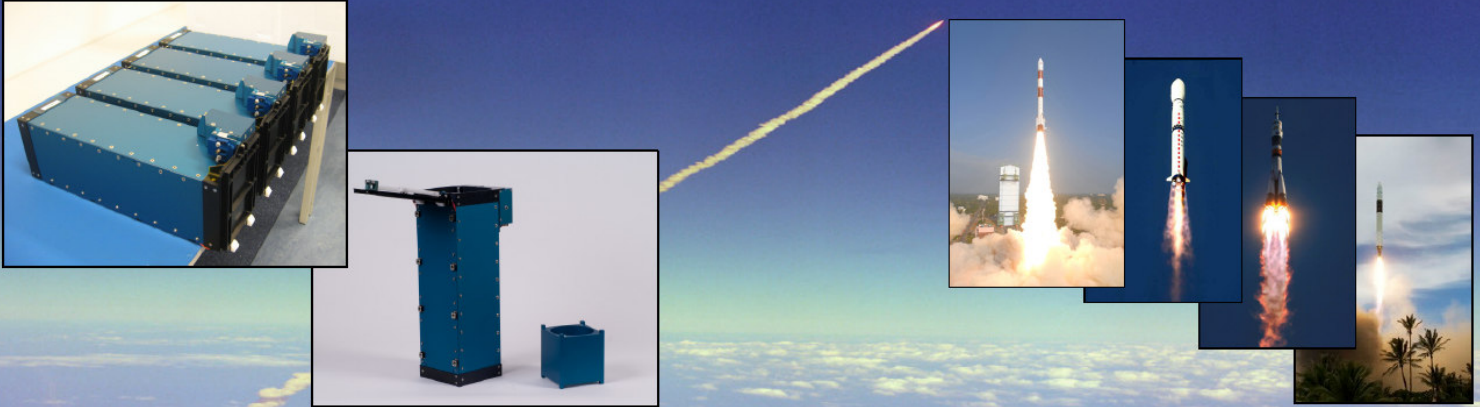


ISIPOD CubeSat Deployer



v7.11

Overview

The ISIPOD is an affordable European launch adapter developed by ISIS for use with its ISILaunch Services to accommodate CubeSats onboard a large variety of launch vehicles. Yet it can also be purchased separately in case a CubeSat developer has arranged a launch independently.

By design the ISIPOD provides simple, well defined interfaces with the CubeSats internally and with the launch vehicle externally. During launch, the CubeSats are fully enclosed by the ISIPOD and are only dispensed upon signal by the launch vehicle.

Features

- Provides deployment status signal
- No battery ('unlimited shelf life')
- No pyrotechnics
- No export restrictions
- Protects the CubeSats from external environment
- ISIPOD activated by Launch Vehicle
- More envelope for deployables than other CubeSat launch adapters

Compatibility

- Mechanically interfaces with CubeSats by means of guiderails
- Mechanically interfaces with Launch vehicle by means of standard fasteners
- Electrically interfaces with Launch vehicle for telemetry
- Adheres to latest CubeSat standards

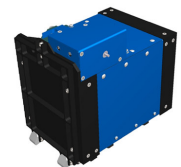
Included in shipment

- ISIPOD
- Documentation

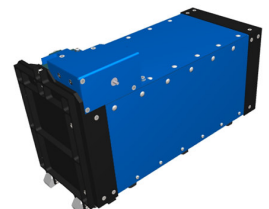
Available Configurations

- 1U ISIPOD
- 2U ISIPOD
- 3U ISIPOD
- Shared configuration possible
- Custom size on request (from 0,5 U to 5U in length)
- Other sizes under development (such as the '6 Pack')

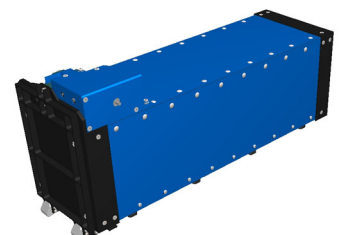
1 U



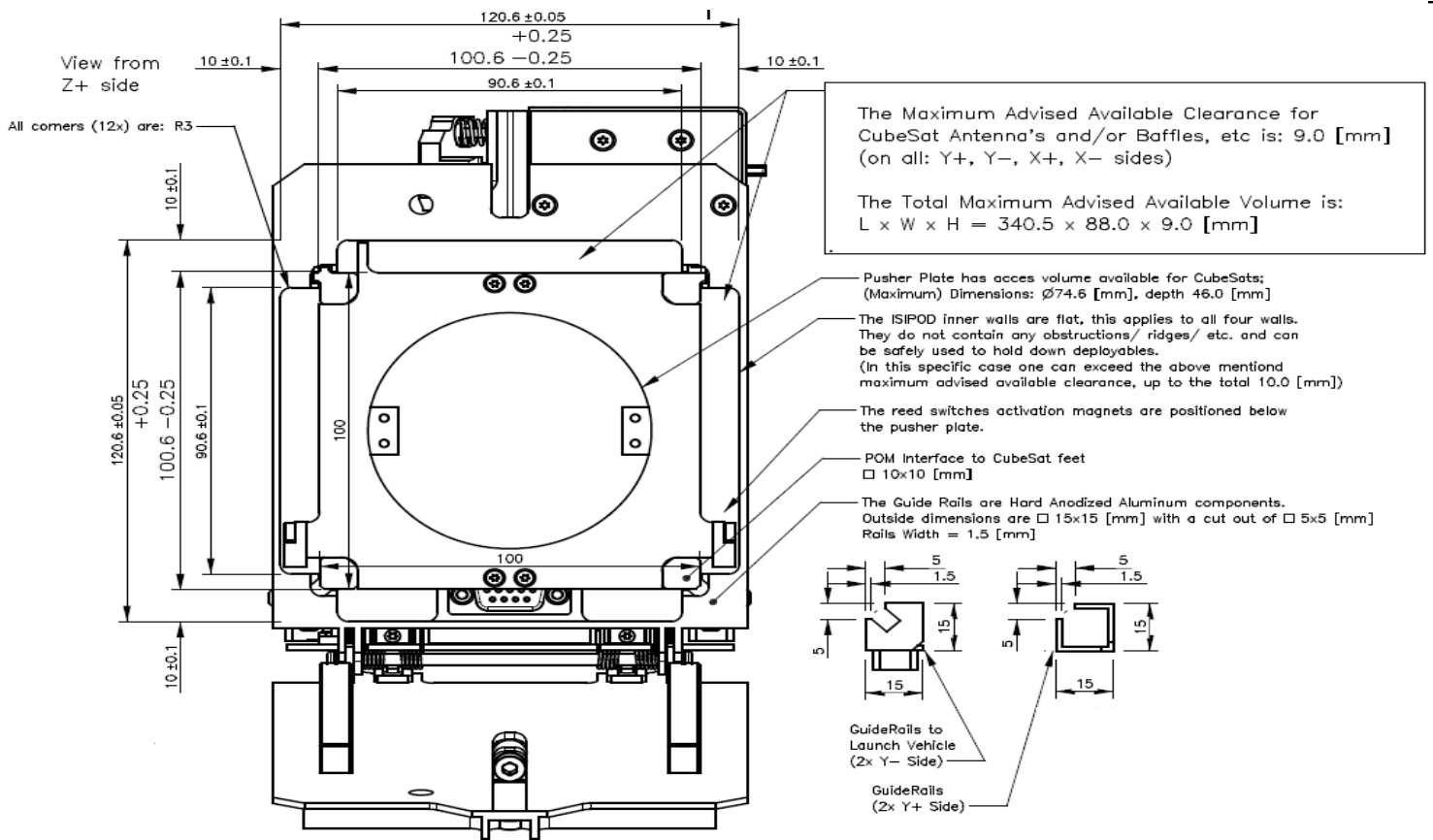
2 U



3 U



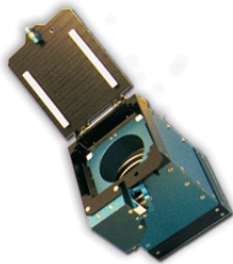
ISIPOD CubeSat Deployer



Specifications	1U	2U	3U
ISIPOD mass	1.5 kg	1.75 kg	2.0 kg
Payload mass [typical]	1.0 kg	2.0 kg	3.0 kg
Payload mass [maximum]	2.0 kg	4.0 kg	6.0 kg
Envelope [H x W x L] (mm ³)	~ 182 x 127 x 186	~ 182 x 127 x 300	~ 182 x 127 x 414

Qualification

- Qualified for multitude of launch vehicles
- Qualified for heavier CubeSat payloads (up to 6.0 kg for a 3U ISIPOD)
- Qualified temperature range: -40 °C to +90 °C



Qualification and Acceptance Testing

Test	QT	AT
Functional	✓	✓
Vibration	✓	✓
Mechanical Shock	✓	-
Thermal Cycling	✓	✓
Thermal Vacuum	✓	-
Total Ionizing Dose	-	-

QT is performed on the design/qualification model
AT is performed on the unit to be shipped

This document is subject to change without notice. The latest technical information and price information is available on www.cubesatshop.com

ISIS - Innovative Solutions In Space

Molengraaffsingel 12-14, 2629 JD, Delft, The Netherlands • T +31152569018 • F +3152573969 • info@isispace.nl • www.isispace.nl