

Introduction to our Achievements

In 2013, 140 Years Have Passed since the Founding of Taisei Corporation

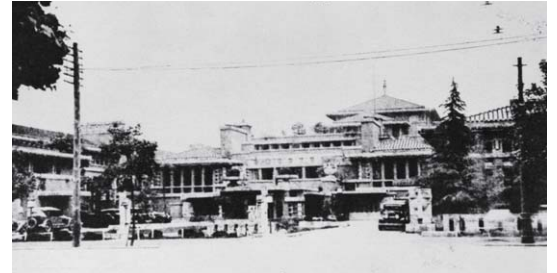
The establishment of Taisei Corporation, which is the core of the Taisei Group, was started by Kihachiro Okura in 1873 of Okuragumi Shokai, which corresponds to today's group. Since then the history of the company has been guided by the concept of contributing to the development of society through a safe and comfortable living environment. The founder's spirit still lives on our business activities in order to construct a prosperous future.



1 The founder, Kihachiro Okura.
Throughout the Meiji and Taisho eras he founded several companies that contributed to the modernization of Japan



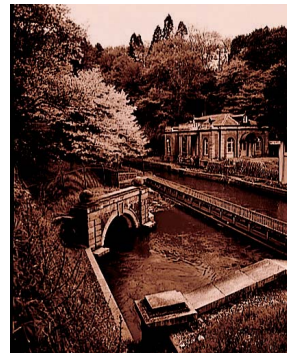
3 Rokumeikan
Beautiful western-style building. It dominated diplomatic and social intercourse in the Meiji era.



5 New Imperial Hotel
The first real Western style hotel in Japan. The designer was the world famous architect, Frank Lloyd Wright



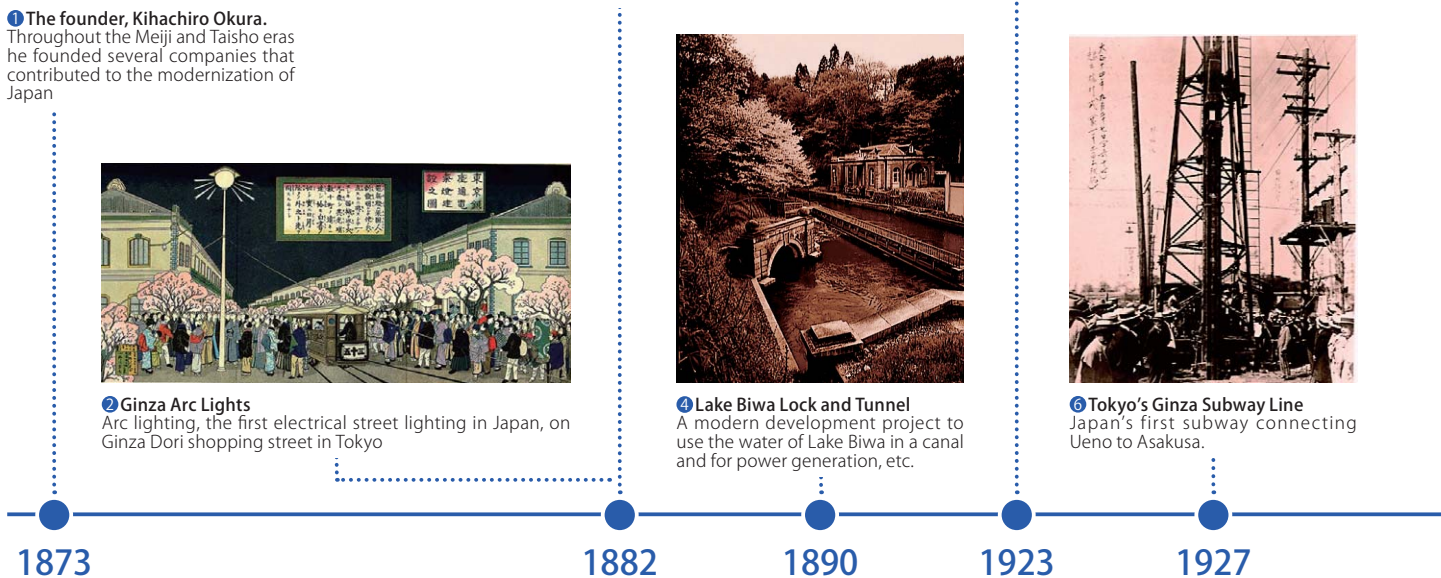
2 Ginza Arc Lights
Arc lighting, the first electrical street lighting in Japan, on Ginza Dori shopping street in Tokyo



4 Lake Biwa Lock and Tunnel
A modern development project to use the water of Lake Biwa in a canal and for power generation, etc.



6 Tokyo's Ginza Subway Line
Japan's first subway connecting Ueno to Asakusa.

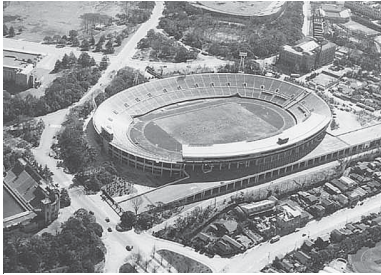


History of the Taisei Group of Companies

★ Completed construction
* Established

- 1873** * Kihachiro Okura established Okuragumi Shokai in Ginza **1**
★ Ginza Renga Gai (Ginza Bricktown)
- 1882** Arc lighting lit in front of Okuragumi Shokai in Ginza **2**
- 1883** ★ Rokumeikan **3**
- 1887** * Nippon Doboku Co., Ltd.
(Japan's first construction company)
- 1890** * Lake Biwa Lock and Tunnel **4**
- 1917** * Okura Doboku Gumi Corporation
(first incorporated company in the Japanese construction industry)
- 1923** * New Imperial Hotel **5**
- 1927** ★ The Tokyo Underground Railroad
(Japan's first subway) **6**
- 1939** Special Japanese Pavilion at the Sun Francisco Exposition
- 1946** Changed name to Taisei Corporation
- 1953** * Yuraku Real Estate Co., Ltd.
(currently Taisei -Yuraku Real Estate Co.,Ltd.)
- 1955** ★ The terminal building at Tokyo International Airport (Haneda)

- 1956** * Seiwa Machinery Co., Ltd.
(currently Seiwa Renewal Works Co., Ltd.)
- 1957** Listed on the Tokyo Stock Exchange
(first company in the construction industry to be listed)
- 1958** ★ National Stadium **7**
- 1960** * Technical research center (currently Technology Center)
- 1961** * Taisei Road Construction Co., Ltd.
(currently Taisei Rotec Corporation)
- 1962** ★ Hotel Indonesia (the first Taisei's overseas construction since WWII)
- 1963** * Taisei Prefab Construction Co., Ltd.
(currently Taisei U-LEC Co., Ltd.)
- 1964** ★ The main building of Hotel New Otani
(first high-rise building in Japan)
- 1965** * Taiko Setsubi Co., Ltd. (currently Taisei Setsubi Co., Ltd.)
★ Mt. Fuji Weather Station **8**
- 1969** * The Housing Division (Currently Taisei housing corporation)
- 1971** * Taisei Service, Inc. (currently Taisei -Yuraku Real Estate Co.,Ltd.)



7 National Stadium

This was the first major athletic stadium in Japan, constructed for the third Asian Games. After modification in 1963, it was used as the main stadium of the Tokyo Olympics



9 Seikan Tunnel

Japan's longest railway tunnel connecting Hakodate to Aomori by land. It took over 20 years to complete the tunnel.



11 Djibouti Kempinski Hotel

This remarkable project was the design and construction of a high-class five-star hotel in just nine months



8 Mt. Fuji Weather Station

One of Japan's main meteorological observing stations. It was constructed under harsh weather conditions at the highest altitude in Japan.



10 Sapporo Dome

Large dome constructed for the 2002 World Cup. With its hovering sliding pitch stage, the dome can host indoor football and baseball games



12 JP Tower

This is a seismic isolated building that preserves part of the old Tokyo Station Central Post Office on a block that faces Tokyo Station Plaza

1958

1965

1988

2001

2009

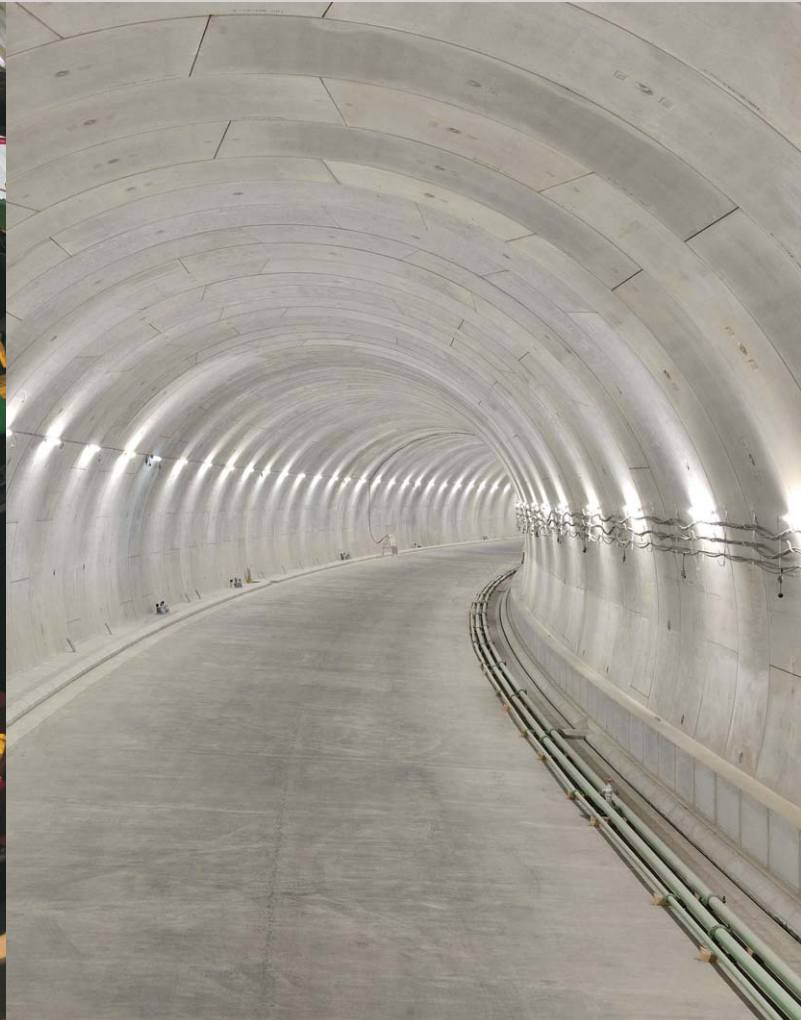
2012

- 1979 ★ Shinjuku Center Building (transferred headquarters to Shinjuku Center Building)
- 1987 ★ Opened the Grand Seto Bridge, which links Honshu with Shikoku
- 1988 ★ Seikan Tunnel 9 (Japan's longest underground tunnel)
- ★ Chirata Hydroelectric Power Station
- 1991 ★ Tokyo Metropolitan Government Main Building No. 1
- 1993 ★ The Landmark Tower, Yokohama (tallest building in Japan at 296 m)
- 1997 ★ New Kuala Lumpur International Airport in Malaysia
- ★ Taisei Housing Corporation
- 1999 ★ Subaru Telescope, Hawaii
- ★ Expressway 2, Taiwan
- 2000 ★ JR Central Towers
- 2001 ★ Sapporo Dome 10
- ★ Ilo Coal-Fired Power Plant, in Peru
- 2004 ★ Chubu Central International Airport
- ★ Kyushu National Museum

- 2006 ★ UNIMAS (University Malaysia Sarawak) Development Project
- ★ Bangkok Industrial Ring Road, Cable-stayed Bridges
- 2007 ★ Chubetsu Dam
- 2008 ★ The Palm Jumeirah Submarine Tunnel, Dubai
- ★ Bali Bach Conservation Project, Package IV: Shore Protection Work for Kuta Beach
- ★ Coal Unloading jetty and Connecting Bridge, Taiwan
- 2009 ★ Djibouti Kempinski Hotel 11
- ★ Jimah Coal Fired Power Station, Malaysia
- ★ Al Mas Tower, Dubai
- 2010 ★ Improvement of Kararo-Wadh Section of National Highway N-25, Pakistan
- 2011 ★ Sapporo Vietnam Limited Brewery Factory
- 2012 ★ JP Tower 12
- ★ Taisei-Yuraku Real Estate Co., Ltd.
- 2013 Celebrated 140th Anniversary since establishment
- ★ New Doha International Airport, Qatar

Civil Engineering

Creating social infrastructure that supports people's lives and industry. Here we introduce some projects such as tunnels, bridges, and dams, etc. recently completed by Taisei Corporation.



Metropolitan Expressway Tunnel, Contributing to Solving the City's Traffic Congestion

Of the total length of 9.4 km of the Metropolitan Expressway Central Circular Route Shinagawa Line, about 8 km is a tunnel. In order to complete this long tunnel in a short period of time, excavation with a single shield machine that is unprecedented in the world is being carried out. With the completion of the Shinagawa Line, the whole Central Circular Route will be opened, and this is expected to make a major contribution to solving traffic congestion on the Metropolitan Expressway.

Metropolitan Expressway Central Circular Route Shinagawa Line

Client : Metropolitan Expressway Company Limited, Tokyo
Design : Tokyo Metropolitan Government
Scheduled completion : March 2013
Location : Yashio, Shinagawa-ku to Aobadai, Meguro-ku, Tokyo



Contributing to a secure power supply in Taiwan through the construction of an enormous jetty extending 2 km offshore

This jetty extends 2.2 km offshore, and was constructed to provide docking and unloading capability for coal ships of up to 150,000 dwt as well as transport facilities for Taiwan Power Company's coal-fired power plant outside Kaohsiung city. This large-scale jetty construction was undertaken in Taiwan's coastal area of typhoon-prone seas, requiring full implementation of Taisei's most advanced marine engineering know-how.

Coal Unloading Jetty and Connecting Bridge

Client : Taiwan Power Company
Design : Union-Tech Engineering Consultants Co.
Completion : April 2008
Location : No. 125, Minzhi Rd., Qieding Dist., Kaohsiung City 852, Taiwan



Improvement of Road Infrastructure in Developing Countries

This project is the refurbishment of a total length of 96 km of highway, part of National Route 25 connecting Karachi in Pakistan with Afghanistan. The development of transport infrastructure with Japanese grant aid cooperation contributes to the economic growth developing countries, to reduction of poverty, improvement in law and order, etc.

Improvement of Kararo – Wadh Section of National Highway N-25

Client : National Highway Authority (NHA)
Design : INGEROSEC Corporation. Nippon Koei Co., Ltd. JV
Completion : December 2010
Location : Balochistan, Islamic Republic of Pakistan



Kingdom of Thailand's first twin cable-stayed bridges relieving traffic congestion

Taisei constructed this pair of steel and concrete long-span hybrid cable-stayed bridges across the Chao Phraya River. These bridges form part of the Industrial Ring Road that connects the Center of Bangkok to the outlying districts. The bridges contribute to economic development in the area by significantly shortening transport time between the southern industrial district and the city of Bangkok, where goods previously had to be transported by ferry.

Bangkok Industrial Ring Road, Cable-stayed Bridges

Client : Ministry of Transport, Kingdom of Thailand
Design : Mott MacDonald JV
Completion : August 2006
Location : Prapadaeng, Samutprakarn, Bangkok City, Kingdom of Thailand



Bali Beach Conservation Project including protection of corals

Artificial beach nourishment work was carried out on the Indonesian island of Bali to protect the sand beach in Kuta district from erosion and simultaneously safeguard the landscape and this major tourism resource. Shore protection was performed by evenly laying sand taken from the seabed and removing unnecessary sea banks and tetrapods. This environmental project also transplanted corals within the reef (35,000 m²) as part of an environmental conservation measure. At present, the lively beach is attracting many tourists and local residents.

Bali Beach Conservation Project, Package IV: Shore Protection Works for Kuta Beach

Client : Ministry of Public Works of Indonesia
Design : Nippon Koei Co., Ltd. JV
Completion : December 2008
Location : Kuta District, Bali, Republic of Indonesia



Completion of a Difficult and Challenging Construction Work for the Opening of the Hokuriku Shinkansen

The Hokuriku Shinkansen (between Nagano and Kanazawa) is in the final stages scheduled for completion at the end of 2014. Taisei has constructed a 4-span, 428 m long PC extradosed bridge over the Jinzu River. The construction was constructed safely under severe conditions, with a conventional railway line running beside it.

Hokuriku Shinkansen, Jinzu River Bridge

Client : Japan Railway Construction, Transport, and Technology Agency
Design : Tonichi Engineering Consultants, Inc.
Completion : October 2012
Location : Toyama City, Toyama Prefecture

* A new structural shape intermediate between a cable-stayed bridge and a girder bridge

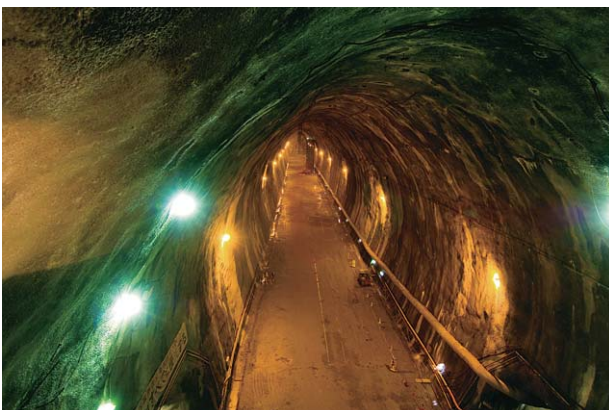


Supporting a Pillar of Japanese Energy Policy

A large tunnel is being constructed in bedrock 180 m below ground, to create the world's largest water sealed underground bedrock stockpiling base in which liquefied petroleum gas (PLG) is contained by the groundwater pressure. This space will store 450,000 tons of the 1.5 million tons storage that is planned in the fundamental energy plan.

Namikata National LPG Stockpiling Base

Client : Japan Oil, Gas and Metals National Corporation
Design : J-Power, Mitsubishi Materials, JX Nippon Exploration and Development Co., Ltd. Joint Venture
Completion : March 2013
Location : Namikata, Imabari City, Ehime Prefecture



Adoption of New Construction Method to Reduce the Environmental Load Dam

This is a multi-purpose dam constructed for water supply, supply of irrigation water, and flood control on the Okukubi River that flows through the eastern part of Okinawa Prefecture. This was the first time that the "CSG construction method*" was adopted in Japan, through which cost reduction and decrease in the environmental load was achieved by effectively using the materials that could be obtained locally.

Okukubi Dam

Client : Development and Construction Department, Okinawa General Bureau, Cabinet Office
Design / Associated Consulting : Client / Nippon Koei / Crearia Inc. / Public Association for Construction Services, Okinawa Region
Completion : March 2013
Location : Kin, Kunigami-gun, Okinawa Prefecture

* A construction method in which cement is added to and mixed with locally available materials (sand, gravel, etc.), which is then leveled and compacted.



Completion of LNG Tank by New Construction Method

This is an above ground LNG tank constructed using the "DUAL PC dike" developed by Taisei Corporation. The tank capacity, 180,000 kL, is the largest in Japan; and in 2013, two LNG tanks were completed by the "DUAL PC dike" method.

Kawagoe Thermal Power Station LNG Facility

Client : Chubu Electric Power Company, Inc.
Design : Taisei Corporation
Completion : March 2013
Location : Kawagoe, Mie-gun, Mie Prefecture



Building Construction

We provide a new platform born from the capability of designing in accordance with the client's needs, advanced technical capacity, culture, and industrial trends. Here, we introduce some projects recently undertaken and completed by Taisei Corporation, including airports, office buildings, hospitals, schools, amusement facilities, and factories.

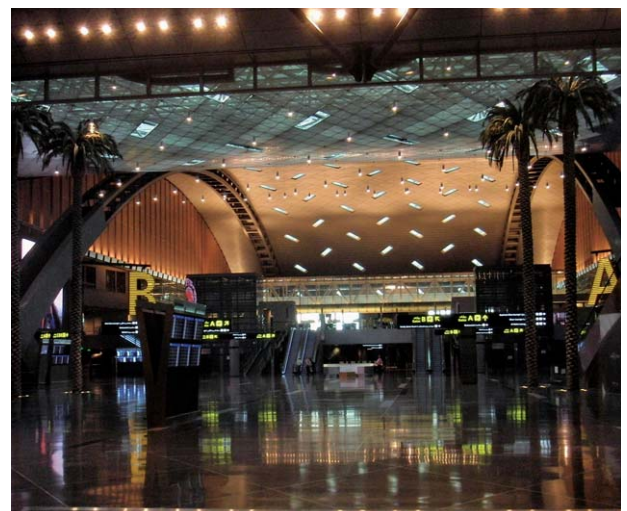


The Birth of a New Hub Airport built to the World's Highest Standards in Rapidly Growing Qatar

This is a new airport planned in response to the increasing number of passengers as result of the rapid economic development of Qatar, with the aim of becoming a major regional hub airport connecting Europe, Africa and Asia. The enormous terminal facilities with a total floor area of 490,000 m² is the largest ever undertaken by the company since its founding. The know-how we have accumulated from the many airports constructed in the past has led to the success of this project.

New Doha International Airport

Client : New Doha International Airport Steering Committee
Design : HOK (Hellmuth, Obata, Kassabaum)
Completion : March 2013
Location : Doha City, Qatar



700,000 KW 2 units power station that provides electricity to the metropolitan area

Taisei's wealth of experience and unique know-how in design and construction is showcased in this large-scale power station in Malaysia.

Jimah Coal Fired Power Station

Client : Sumitomo Corporation

Design : Taisei, IHI, Toshiba

Completion : June 2009

Location : Negeri Sembilan, Malaysia



A new high-rise building with a height of 360 m

With 68 floors rising up to 360 m above ground level, the Al Mas Tower has become a landmark in the Jumeirah Lake Tower development area in Dubai.

Al Mas Tower

Client : Nakheel Properties

Design : WS Atkins & Partners Overseas

Completion : December 2009

Location : Dubai, United Arab Emirates



A luxury hotel completed in just nine months

This five-star hotel was constructed in the city of Djibouti, the capital of the Republic of Djibouti in eastern Africa. It was designed and built in the remarkably short time of only nine months, finished in time for an important international conference for the leaders of the State Summit of The Common Market for Eastern and Southern Africa (COMESA).

Djibouti Palace Kempinski Hotel

Client : Nakheel Properties

Design : Taisei Corporation

Completion : November 2008

Location : Djibouti, Republic of Djibouti



Seismic base-isolated high-rise apartment building designed to provide greater safety for more people

A high-rise apartment building located in the heart of Taiwan's third largest city Taichung has gained prominence as a high-class apartment building with a seismic base-isolated structure.

Apartment Building in Taiwan

Client : Highwealth Construction Corporation

Design : Darong Architects and Planners

Completion : April 2011

Location : Taichung, Taiwan



Production of Japanese Beer in a Vietnamese Brewery

An overseas brewery for the Sapporo Group has been constructed in the outskirts of Ho Chi Minh City, Long An Province, in the south of Vietnam. Construction of this brewery with an annual production capacity of 40,000 kL was completed in a short period of time by utilizing our construction experience in Vietnam.

Sapporo Vietnam Limited Brewery Factory

Client : Sapporo Vietnam Limited.
Design : FOODTECH
Completion : November 2011
Location : Long An Province, Vietnam



Factory, Headquarters Function, and Directly Operated Store Combined in Great Natural Location

This project was the construction of a headquarters building for a company engaged in the outdoor business such as camping equipment, etc. On the enormous site that can be used as a camping ground, an office, a factory, and a store were arranged in a stepped formation in accordance with the gently sloping topography. The entire facility is covered by a large concrete roof 150 m long, and the height of the building was kept low so as not to detract from the magnificent landscape.

Snow Peak Headquarters Building

Client : Snow Peak Inc.
Design : Taisei Corporation
Completion : April 2011
Location : Nakanohara, Sanjo, Niigata Prefecture

- Received the 2011 Good Design Award of the Director General of the Small and Medium Enterprise Agency
- Received the 25th Nikkei Office Award



Birth of Highly Accurate and High Quality Building

A high grade building has been born in the Tamachi area in central Tokyo surrounded by water and green. This is a high accuracy, high quality building in which attention has been paid to the accuracy control of the structural steel system, to realize a space larger than 450 tsubo (1485 m²) with no columns, thereby providing users with spaces that have a high degree of freedom. The curtain wall on the side of the building transmits the beautiful surrounding scenery without distortion.

Sumitomo Realty Tamachi First Building

Client : Sumitomo Realty & Development Co., Ltd.
Design : Nikken Sekkei Ltd.
Completion : April 2012
Location : Shibaura, Minato-ku, Tokyo



Creating a Green Landscape, and Recreating a Dignified Streetscape

We assisted in the redevelopment of a large site of about 28,956 m², the site of the former Sony Headquarters in Gotenyama, Tokyo, where the Ieyasu family palace and the mansions of many daimyo (feudal lord) residences were once located, and even today is a quiet residential area. The development included an office building with the largest standard floor area in Japan, condominiums, and a park. The buildings are of medium- and low-rise for continuity with the rich green surrounding environment, thereby producing a human scale development.

Garden City Shinagawa Gotenyama

Client : Sekisui House Ltd.
Design : Nikken Sekkei and Taisei Corporation
Completion : February 2012
Location : Kita Shinagawa, Shinagawa-ku, Tokyo

- Recipient of award in the 11th "Rooftop, Wall Special Planting Competition"



Supporting an Urban Aquarium with an Artificial Seawater Manufacturing System

A large-scale commercial facility has been created adjacent to the new Tokyo Skytree. The aquarium within the facility uses the most advanced water treatment technology of which Taisei is proud. The facility uses skeleton and infill, taking into consideration restoration to its original condition and renewal.

Tokyo Skytree Town West Yard, Sumida Aquarium

Client : Tokyo Skytree Town West Yard: Tobu Railway Co., Ltd.
Sumida Aquarium: Orix Real Estate Corporation
Design : Nikken Sekkei Ltd. and Taisei Corporation
Completion : February 2012
Location : Oshiage, Sumida-ku, Tokyo



Creating a Commercial Space Suitable for the Shonan Lifestyle

This project is the largest shopping center in the Shonan area a sea-side town approx 80km south of Tokyo, and is the core of a redevelopment in front of Tsujidō Station on the JR Tokaido Line. It includes large open terraces providing continuity with the Shonan landscape. This creates circuit type lively spaces that promote new communication.

Terrace Mall Shonan

Client : Special Purpose Company Shonan Tsujidō Investment
Design : Taisei Corporation
Completion : November 2011
Location : Tsujidokandai, Fujisawa, Kanagawa Prefecture

• Received 12th Fujisawa Landscape Award



Completion of a New Symbol of the Restoration of Fukushima

Construction of a new hotel building has been completed with the construction period extended to about three months due to the Great East Japan Earthquake. Taisei was also responsible for restoration work on the damaged existing facility, which reopened for business in February 2012. This project deepened our bonds with the area, and was the driving force for bringing back activity to the area.

Spa Resort Hawaiians Monolith Tower

Client : Joban Kosan Co., Ltd.
Design : Taisei Corporation
Completion : November 2011
Location : Jobanfujiwaramachi, Iwaki, Fukushima Prefecture



A Base for Cultural Interchange that Keeps Alive the History of Ishikawa Prefecture

In this project the old Ishikawa Prefectural Office constructed in 1923 is preserved and refurbished, and regenerated as a cultural interchange facility for Ishikawa Prefecture on the sea-side of Japan. The old office building was the first modern building using reinforced concrete in Ishikawa Prefecture. A seismic isolation structure was introduced to the whole building during the renovation, and a modern space using curtain walls was added while retaining the historical appearance.

Ishikawa Prefecture Shinoki Cultural Complex

Client : Ishikawa Prefecture
Design : Yamashita Sekkei (refurbishment)
Completion : March 2010
Location : Hirosaka, Kanazawa, Ishikawa Prefecture

• Received the 21st BELCA Award Best Reform Award



Supporting the Development of Radiation Therapy Facilities with Advanced Technology

The first heavy particle radiotherapy facility in Kyushu and the 4th in Japan has been constructed in front of the Shin-Tosu Station on the Kyushu Shinkansen. This is a joint industry/government/academia project, and is the first privately-run heavy particle radiotherapy facility in Japan. This project was completed by applying its rich experience in construction of heavy particle cancer radiotherapy facility.

Kyushu International Heavy Particle Cancer Radiotherapy Facility (Saga Himat)

Client : Kyushu Heavy Particle Facility Management, Public Interest Incorporated Foundation Saga International Heavy Particle Cancer Radiotherapy Facility Foundation

Design : Nikken Sekkei

Completion : October 2012

Location : Harakogomachi, Tosu City, Saga Prefecture



Campus Proposed as Center for Local Exchange

This project is a university campus that was planned as a base for urban planning. Functions that can be used for linking and cooperation with the locality, such as the event hall, food court, media lounge, etc., were identified and concentrated on the lower levels and opened to the local residents. In addition, the campus space was created on a human scale to provide a feeling of familiarity by the use of arches.

Musashino University Ariake Campus

Client : Musashino University

Basic Design : Nikken Sekkei

Detailed design, construction management : Taisei Corporation

Completion : January 2012

Location : Ariake, Koto-ku, Tokyo



A Production Facility Coexisting with a Lush Forest

This is a base factory for a Western-style confectionery maker located in the forest belt of Nikko 100km north of Tokyo. The design incorporates the surrounding natural environment to the maximum extent, and a gentle landscape was created to produce the feeling of the beautiful landscape of Northern Sweden, from which the company name originated.

Yokumoku Crea Nikko Factory

Client : Yokumoku Crea K.K.

Design : Taisei Corporation

Completion : May 2011

Location : Aza Higashihara, Tsuchizawa, Nikko City, Tochigi Prefecture

- Received the 23rd Tochigi Prefecture Marronnier Architectural and Landscape Award
- Received Environment Design Section Award of the 10th Environment & Building Equipment Design Award



Completion of the Most Advanced Pharmaceutical Manufacturing Facility

This is an investigational new drug manufacturing facility for solid drugs and injectable drugs, that complies with the latest regulations. This project was completed utilizing the pharmaceutical engineering technology of Taisei Corporation, who has the widest experience within Japan.

Takeda Pharmaceutical Company Ltd., Investigational New Drug Manufacturing Facility

Client : Takeda Pharmaceutical Company Ltd.

Design : Taisei Corporation

Completion : November 2011

Location : Yodogawa-ku, Osaka City, Osaka Prefecture



Real Estate Development

We provide profitable plans that utilize our know-how on a wide variety of project schemes, ranging from formulation of project plans, design, construction, management, and operation.

Here we introduce a portion of our most recent development projects, including redevelopment projects to vitalize urban areas, PFI projects, etc.



A New Business Center in a Historical and Cultural Area

This is a large multi-purpose building that includes offices, educational facilities, etc., developed in front of JR Ochanomizu Station in central Tokyo. Improvement using its characteristics of directly connecting to the Metro station and located in front of the JR station, a plaza is provided that is a gateway to the town. The new business center, to which the Special Urban Renaissance Districts system was applied, and the comfortable lively urban space were integrally created. The client was a special purpose company funded by Taisei Corporation and three other companies,* and Taisei was responsible for the development, design, and construction, and is also participating in the management and operation.

Ochanomizu Sola City

Client : SURUGADAIKAIHATSU TMK

Design : Taisei Corporation

Completion : March 2013

Location : Chiyoda-ku, Tokyo

* Hulic Co., Ltd., Yasuda Real Estate Co., Ltd., Taisei-Yuraku Real Estate Co., Ltd.



Create a Lively Local Core Area

A large scale multi-purpose facility has been created by the redevelopment at the North Exit of Sagami Ono Station south west of Tokyo as part of the vision to promote the commercial development of the city center of Sagamihara City. Since 1999, Taisei Corporation has been promoting this project together with the landowners as a joint project, and since 2007, Taisei has carried out the administrative bureau support work as project representative, construction work, etc.

Bono Sagami Ono

Client : Sagami Ono Station West Side Area Redevelopment Union
Design : Research Institute of Architecture (RIA)
Completion : February 2013
Location : Minami-ku, Sagamihara City, Kanagawa Prefecture



Providing the Value of "One Level Higher Security"

This is a condominium project that was selected by the Ministry of Land, Infrastructure, Transport and Tourism as a Long Term Good Housing Pioneering Model Project. Various technologies were introduced, such as higher seismic resistance and durability, improved changability of the living space and renewability of the services. The client was Taisei Corporation and Taisei-Yuraku Real Estate Co., Ltd., who comprehensively supervised the building design, construction, sales, operation, and management.

Yokohama Hakuraku Residences

Client : Taisei Corporation, Taisei-Yuraku Real Estate Co., Ltd.
Design : Taisei Corporation
Completion : September 2012
Location : Kanagawa-ku, Yokohama City, Kanagawa Prefecture



Development and Operation of Cultural Facility with Private Sector Know-how

This is a multi-purpose hall developed by Shizuoka City by the PFI method. The special purpose company in which Taisei Corporation invested not only designed and constructed the facility, but is also maintaining and operating the facility as the designated manager. This project has attracted great attention as it is rare in Japan for a cultural facility to utilize the creative capabilities of private companies.

Shizuoka City Shimizu Cultural Hall — "Marinart"

Client : Shimizu Cultural Project Support (K.K.)
Design : Maki and Associates, and Taisei Corporation JV
Completion : April 2012
Location : Shimizu-ku, Shizuoka City, Shizuoka Prefecture

