



HEART AND STAR PULLOVER
(TO KNIT)

SIZES

To fit chest measurement

2	21 ins	[53.5 cm]
4	23 ins	[58.5 cm]
6	25 ins	[63.5 cm]
8	26½ ins	[67.5 cm]

Finished chest

2	25 ins	[63.5 cm]
4	27 ins	[68.5 cm]
6	29½ ins	[75 cm]
8	32½ ins	[82.5 cm]

MATERIALS

STAR VERSION

Sizes 2 (4-6-8)

Bernat® Berella '4' (100 g/3.5 oz; 197 m/216 yds) or
Bernat® Super Value (197 g/7 oz; 389 m/426 yds)

Main Color (MC): (Royal Blue)

390 m/410 yds (**540 m/595 yds**-630 m/ 700 yds-**780 m/ 860 yds**)

Contrast A: (Lt Blue)

150 m/170 yds (**150 m/170 yds**-150 m/170 yds-**150 m/ 170 yds**)

HEART VERSION

Sizes 2 (4-6-8)

Bernat® Berella '4' (100 g / 3.5 oz; 197 m/216 yds) or
Bernat® Super Value (197 g / 7 oz; 389 m/426 yds)

Main Color (MC): (Dark Pink)

390 m/410 yds (**540 m/595 yds**-630 m/ 700 yds-**780 m/ 860 yds**)

Contrast A: (Lt Pink)

210 m/235 yds (**210 m/235 yds**-210 m/235 yds-**210 m/ 235 yds**)

Sizes 4.5 mm (U.S. 7) and 5 mm (U.S. 8) knitting needles
or size needed to obtain gauge. 2 st holders.

GAUGE

18 sts and 24 rows = 4 ins [10 cm] with larger needles in
stocking st.

ABBREVIATIONS

Alt = Alternate(ing).

Beg = Beginning.

Cont = Continue(ity).

Dec = Decrease(ing).

Inc = Increase 1 stitch by knitting into front and back of
next stitch.

Rem = Remaining.

Rep = Repeat.

RS = Right side.

St(s) = Stitch(es).

WS = Wrong side.

INSTRUCTIONS

*The instructions are written for smallest size. If changes are necessary
for larger sizes the instructions will be written thus (). When only
one number is given, it applies to all sizes. For ease in working, circle
all numbers pertaining to your size.*

BACK

With MC and smaller needles, cast on 57 (61-67-73**) sts.

1st row: (RS). K1. *P1. K1. Rep from * to end of row.

2nd row: P1. *K1. P1. Rep from * to end of row.

Rep last 2 rows of (K1. P1) ribbing for 2 ins [5 cm], ending
on a 2nd row.**

Change to larger needles and proceed in stocking st until
work from beg measures 7½ (**8-9-11**) ins [19 (**20.5-23-28**) cm],
ending with a purl row.

Shape armholes: Cast off 4 (4-6-6) sts beg next 2 rows. 49 (53-55-61) sts.

Cont even until armhole measures 5½ (6-6½-7) ins [14 (15-16.5-18) cm], ending with a purl row.

Shape shoulders: Cast off 6 (6-6-8) sts beg next 2 rows, then cast off 6 (7-7-8) sts beg following 2 rows. Leave rem 25 (27-29-29) sts on a st holder.

FRONT

Note: When working from charts, wind small balls of the colors to be used, one for each separate area of color in the design. To change colors, twist the two colors around each other where they meet on WS to avoid a hole.

Work from ** to ** as given for Back.

Change to larger needles and proceed in stocking st for 4 (6-10-14) rows.

Place chart: 1st row: (RS). K9 (11-14-17). Work 1st row of appropriate chart across next 39 sts, reading row from **right** to left. Knit to end of row.

2nd row: P9 (11-14-17). Work 2nd row of appropriate chart across next 39 sts, reading row from **left** to right. Purl to end of row.

Keeping cont of chart, as placed in last 2 rows, cont even until work from beg measures same length as Back to armholes, ending with a purl row.

Shape armholes: Cast off 4 (4-6-6) sts beg next 2 rows. 49 (53-55-61) sts.

Cont even until armhole measures 3½ (3½-4-4½) ins [9 (9-10-11.5) cm], ending with a purl row.

Shape neck: Next row: K18 (20-20-23) (neck edge). **Turn.** Leave rem sts on a spare needle.

Dec 1 st at neck edge on next 4 rows, then on every following alt row 2 (3-3-3) times. 12 (13-13-16) sts.

Cont even until armhole measures same length as Back to beg of shoulder shaping, ending with a purl row.

Shape shoulder: Cast off 6 (6-6-8) sts beg next row. Work 1 row even. Cast off rem 7 (7-7-8) sts.

With RS of work facing, slip next 13 (13-15-15) sts onto a st holder. Join MC to rem sts and knit to end of row.

Dec 1 st at neck edge on next 4 rows, then on every following alt row 2 (3-3-3) times. 12 (13-13-16) sts.

Cont even until armhole measures same length as Back to beg of shoulder shaping, ending with a purl row.

Shape shoulder: Cast off 6 (6-6-8) sts beg next row. Work 1 row even. Cast off rem 7 (7-7-8) sts.

SLEEVES

With MC and smaller needles, cast on 33 (35-35-37) sts. Work 2 ins [5 cm] in (K1. P1) ribbing as given for Back, inc 4 sts evenly across last row. 37 (39-39-41) sts.

Change to larger needles and proceed in stocking st for 4 rows. Inc 1 st each end of needle on next and every following 4th row until there are 41 (47-47-53) sts, then on every following 6th row until there are 49 (55-59-63) sts.

Cont even until work from beg measures 8½ (10-11½-13) ins [21.5 (25.5-29-33) cm], ending with a purl row. Place markers at each end of last row.

Work 4 (4-6-6) rows even. Cast off.

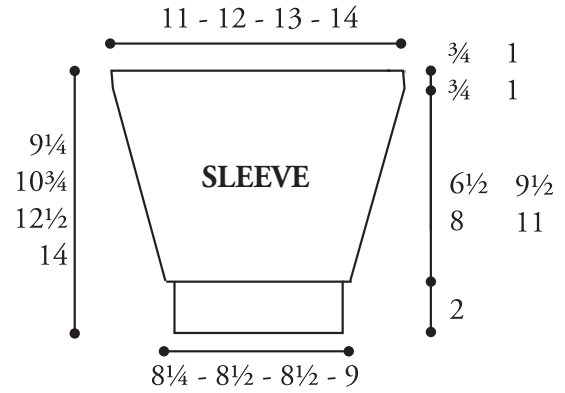
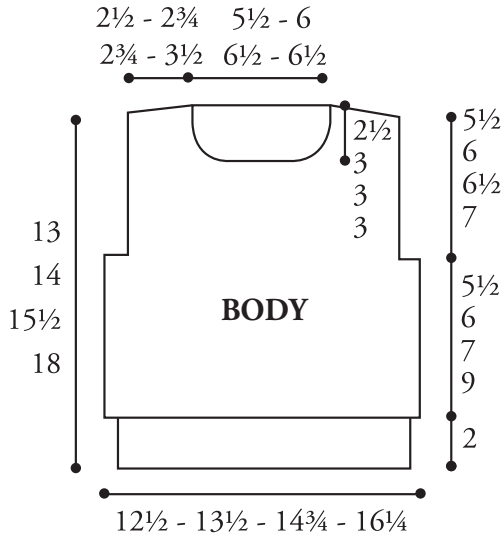
FINISHING

Pin garment pieces to measurements. Cover with a damp cloth, leaving cloth to dry.

Neckband: Sew right shoulder seam. With RS of work facing and smaller needles, pick up and knit 13 (15-15-15) sts down left front neck edge. K13 (13-15-15) from front st holder. Pick up and knit 13 (15-15-15) sts up left front neck edge. K25 (27-29-29) from back st holder, inc 1 st at center. 65 (71-75-75) sts.

Beg on a 2nd row, work 7 rows in (K1. P1) ribbing as given for Back. Cast off in ribbing.

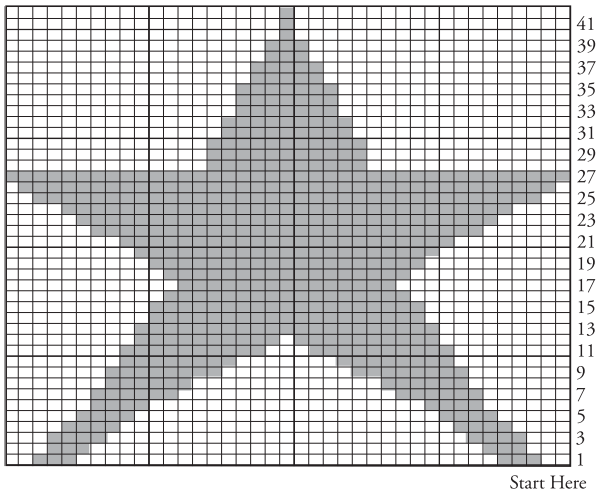
Sew in sleeves, placing rows above markers along cast off sts of front and back to form square armholes. Sew side and sleeve seams.



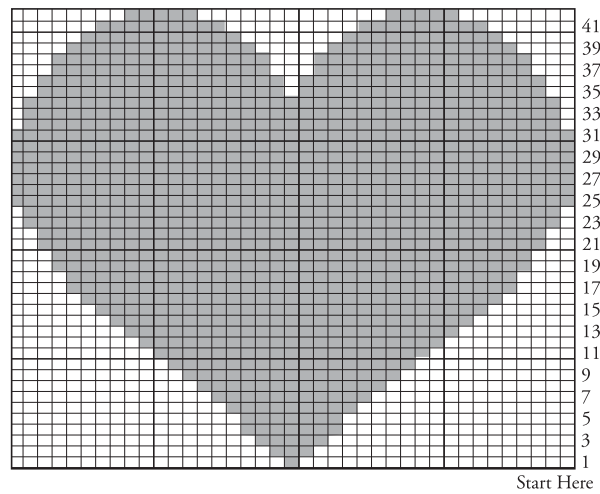
KEY

- = Main Color (MC)
- = Contrast A

STAR CHART



HEART CHART



P.O. Box 40, Listowel ON N4W 3H3
 "home style... life style... your style."