



**BERNAT® DENIMSTYLE
YOKE SWEATERS (TO KNIT)
#722**

SIZES: 4 (6-8-10-12) yrs

To fit chest measurement:

24 (26-28-30-32) ins
[61 (66-71-76-81.5) cm]

Finished chest:

26 (28-31-33-35½) ins [66 (71-78.5-84-90) cm].

MATERIALS

Bernat® Denimstyle

(100 g/3.5 oz; 179 m/196 yds)

MC: 03040 (Jordache)

or

03117 (Stonewash) 3 (3-4-4-4) balls

A: 03006 (Canvas)

2 balls for each size

Size 5 mm (U.S. 8) circular knitting needle
24 ins [60 cm] long. Set of four size 5 mm
(U.S. 8) knitting needles **or size needed to
obtain gauge.** 4 st holders.

GAUGE: 18 sts and 24 rows = 4 ins [10 cm]
in stocking st.

ABBREVIATIONS

www.bernat.com/abbreviations

INSTRUCTIONS

The instructions are written for smallest size. If changes are necessary for larger sizes the instructions will be written thus ().

Note: When working from chart, carry yarn not in use loosely across WS of work, but never over more than 5 sts. When it must pass over more than 5 sts, weave it over and under color in use on next st or at center point of sts it passes over. The colors are never twisted around one another.

Body: With A and circular needle, cast on 118 (126-140-150-160) sts. Break A.

Join in rnd, placing a marker on first st. With MC, work 2 ins [5 cm] in (K1. P1) ribbing.

Knit in rnds until work measures 10 (11-13-15-16½) ins [25.5 (28-33-38-42) cm].

Next rnd: K4 (5-5-6-6). Slip these 4 (5-5-6-6) sts and last 4 (5-5-6-6) sts of previous rnd onto a st holder. 8 (10-10-12-12) sts on holder. K59 (63-70-75-80). Slip last 8 (10-10-12-12) sts just worked onto a st holder. Knit to end of rnd.

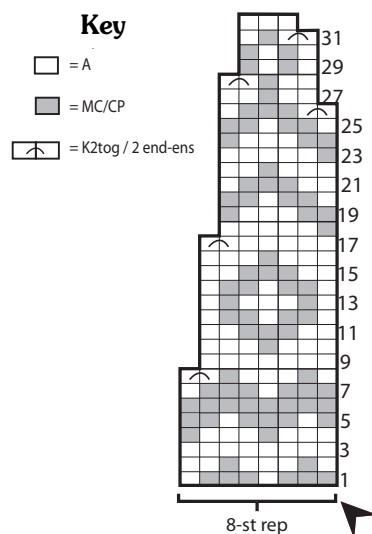
Sleeves: With A and double-pointed needles, cast on 34 (36-40-42-44) sts. Break A. Divide these sts evenly onto 3 needles. Join in rnd, placing a marker on first st. With MC, work 1½ ins [4 cm] in (K1. P1) ribbing. Knit in rnds inc 1 st each end of rnd on 5th and every following 6th rnd until there are 44 (48-56-60-66) sts. Cont even until Sleeve measures 11½ (13-14-15½-17½) ins [29 (33-35.5-39.5-44.5) cm].

Next rnd: K4 (5-5-6-6). Slip these 4 (5-5-6-6) sts and last 4 (5-5-6-6) sts of previous rnd onto a st holder. 8 (10-10-12-12) sts on holder. Leave rem sts on a spare needle.

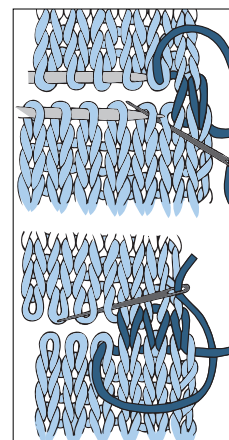
Yoke: With MC and circular needle [K36 (38-46-48-54) of Sleeve. K51 (53-60-63-68) of Body] twice. Mark last st as end of rnd. 174 (182-212-222-244) sts.

Next rnd: *K87 (91-53-111-61). M1. Rep from * around. 176 (184-216-224-248) sts. With A, knit 1 (1-2-3-4) rnd(s) even.

Reading rnds from **right** to left, work Chart to end of chart. 66 (69-81-84-93) sts. Knit 1 (1-2-2-3) rnd(s) even. **Next rnd:** With double-pointed needles and A, knit, dec 2 (3-3-4-5) sts evenly around. 64 (66-78-80-88) sts. Proceed in (K1. P1) ribbing for 4 ins [10 cm]. Cast off in ribbing. Graft underarm sts.



Grafting



P.O. Box 40 Listowel ON N4W 3H3
"home style... life style... your style."