

Bleeding Hearts Cardi

Project features **Brown Sheep Company**
Cotton Fleece

KNIT'n**STYLE**
Real Fashion for Real Knitters



*Sample shown in photo is
the machine-knit version of
Mary Anne Oger's
"Battenburg Lace."*



www.knitstyle.com

To subscribe to Knit 'n Style magazine: knitstyle.com/subscribe

©ALL AMERICAN CRAFTS, INC. 2012 Knit 'n Style® IS A REGISTERED TRADEMARK OF ALL AMERICAN CRAFTS, INC.
ALL RIGHTS RESERVED ON ENTIRE CONTENTS

Bleeding Hearts Cardi

Project features **Brown Sheep Company Cotton Fleece**

KNITⁿSTYLE
Real Fashion for Real Knitters

SIZES

- Cardi is sized to fit Women's X-Small (Small, Medium, Large, X-Large).

FINISHED MEASUREMENTS

- Bust 30 (35, 39, 44, 48)"
- Length 21 (22, 23, 24, 25)"
- Upper Arm 13½ (14, 14½, 15½, 16½)"

MATERIALS

- 4 (4, 4, 5, 5) 100 g (215 yd) skeins **Brown Sheep Company Cotton Fleece** (80% cotton, 20% wool) color Peridot
- Size 6 US (4 mm) needles OR SIZE TO OBTAIN GAUGE
- Size 6 US (4 mm) 24"to 36" circular n/d (for bands and neck edging)
- Stitch markers, yarn needle
- (6) ¾" buttons

GAUGE

- 22 sts x 28 rows = 4" in St st
- TO SAVE TIME, TAKE TIME TO CHECK GAUGE.

NOTES

- V-neck cardigan is worked in St st, with lace edging on lower edge of Body and Sleeves.
- Although similar, this is not the same stitch pattern shown on the Machine Knit version of Mary Anne Oger's *Battenburg Cardi* in the August 2012 issue of *Knit 'n Style*. The Battenburg Lace pattern is relatively easy to work on a knitting machine, but is difficult to work by hand with similar results.

STITCH GLOSSARY

dcd (RS) Sl next 2 sts tog kwise (as if to K2tog) to RH ndl, K1, p2sso

dcd (WS) Sl next 2 sts tog pwise (as if to P2tog-tbl) to RH ndl, P1, p2sso

BLEEDING HEARTS LACE (multiple of 12 sts + 3)

Row 1 (RS): K1 (edge st; keep in Garter st), K1, *yo, ssk, K7, K2tog, yo, K1; rep from * to last st; K1 (edge st; keep in Garter st).

Row 2: K1, *P1, yo, P1, P2tog, P5, ssp, P1, yo; rep from * to last 2 sts; P1, K1.

Row 3: K2, *yo, K2, ssk, K3, K2tog, K2, yo, K1; rep from * to last st; K1.

Row 4: K1, *P1, yo, P3, P2tog, P1, ssp, P3, yo; rep from * to last 2 sts; P1, K1.

Row 5: K2, *yo, K4, dcd, K4, yo, K1; rep from * to last st; K1.

Row 6: K1, *P4, ssp, yo, P1, yo, P2tog, P3; rep from * to last 2 sts; P1, K1.

Row 7: K2, *K2, K2tog, [K1, yo], twice, K1, ssk, K3; rep from * to last st; K1.

Row 8: K1, *P2, ssp, P2, yo, P1, yo, P2, P2tog, P1; rep from * to last 2 sts; P1, K1.

Row 9: K2, *K2tog, K3, yo, K1, yo, K3, ssk, K1; rep from * to last st; K1.

Row 10: K1, *ssp, P4, yo, P1, yo, P4, *dcd, P4, yo, P1, yo, P4; rep from * across; P2tog, K1. Rep Rows 1–10 for Lace st.

BACK

CO 87 (99, 111, 123, 135) sts. **Next row (RS):** Beg Garter st and work even for 2 rows.

Establish Pattern

Next row (RS): Change to Lace st, keeping 1 st ea side in Garter st (edge sts). Work Rows 1–10 once, then Rows 1–5 once, end after RSR. **Next row (WS):** Change to St st. Maint edges sts, purl 1 row, dec'ing 1 st across [86 (98, 110, 122, 134) sts rem]. Cont in St st for rem of piece, work even until piece meas 14 (14½, 15, 15½, 16)" from CO, end after WSR.

Shape Armholes

Next row (RS): BO 4 sts at beg of next 2 rows, then BO 0 (2, 2, 2) sts at beg of next 0 (2, 4, 6, 6) rows, then dec 1 st ea side EOR 2 (4, 5, 6, 8) times [74 (78, 84, 90, 98) sts rem]. Work even until armhole meas 5½ (6, 6½, 7, 7½)" from beg of shaping, end after WSR. PM ea side of center 20 (22, 24, 26, 28) sts.

Shape Neck

Next row (RS): Knit across to first m; join a second ball of yarn and BO center sts, work to end [27 (28, 30, 32, 35) sts rem ea side]. Working both sides at same time, work 1 row even.

Next row (RS): At ea neck edge, dec 1 st EOR 5 times, **while at the same time**, when armhole meas 6¾ (7, 7¼, 7¾, 8¼)" from beg of shaping, end after WSR.

Shape Shoulders

Next row (RS): Cont neck shaping as est **while at the same time**, at ea armhole, BO 11 (7, 8, 6, 7) sts EOR 1 (2, 2, 3, 3) times. BO rem sts.

LEFT FRONT

CO 45 (51, 57, 63, 69) sts. **Next row (RS):** Beg Garter st and work even for 2 rows.

Establish Pattern

Next row (RS): Beg Lace st as foll: K2, work 12-st rep 3 (4, 4, 5, 5) times, then 6 (0, 6, 0, 6) sts of next rep, K1 (edge st). Cont 1 st ea side in Garter st (edge sts), work even for 15 rows, end after WSR. Change to St st. Maintaining edges sts, purl 1 row, dec'ing 1 st across [44 (50, 56, 62, 68) sts rem]. Cont in St st for rem of piece, work even until piece meas 14 (14½, 15, 15½, 16)" from CO, end after WSR.

Shape Armholes

Next row (RS): At armhole edge, BO 4 sts once, then BO 0 (2, 2, 2) sts 0 (1, 2, 3, 3) times, then dec 1 st EOR 2 (4, 5, 6, 8) times [6 (10, 13, 16, 18) sts dec'd for armhole]. **While at same time**, after working 2 (4, 4, 6, 8) rows of shaping, end after WSR.

Shape Neck

Next row (RS): At neck edge (end of RSR), working 3 sts in from edge, dec 1 st EOR 13 (14, 15, 16, 17) times, then every 4 rows 3 times [16 (17, 18, 19, 20) sts dec'd for neck]. **While at same time**, when piece meas same as Back to shoulder shaping, shape shoulders as for Back at beg of RSR.

RIGHT FRONT

Work as for Left Front, rev patt placement and shaping.

SLEEVES

CO 63 (67, 69, 75, 79) sts. **Next row (RS):** Beg Garter st; work even for 2 rows.

Establish Pattern

Next row (RS): Beg Lace st, centering patt and working 1 st ea side as edge sts. Work 30 rows,

Bleeding Hearts Cardi

or desired length for Lace edging, **while at same time**, when 8 (10, 12, 14, 16) rows have been worked, end after WSR.

Shape Sleeve

Next row (RS): Inc 1 st ea side every 6 rows 3 times, maintaining edge sts and working inc'd sts in patt [69 (73, 75, 81, 85) sts]. Change to St st and work even until piece meas 3¾ (4, 4¼, 4¾, 5¼)" from CO, end after WSR.

Shape Sleeve Cap

Next row (RS): BO 2 sts ea side EOR 3 times,

then dec 1 st EOR 4 (5, 6, 7, 9) times, then BO 2 sts EOR 11 times. BO rem sts.

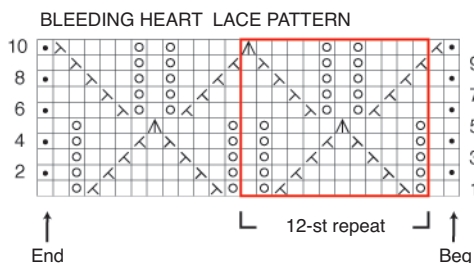
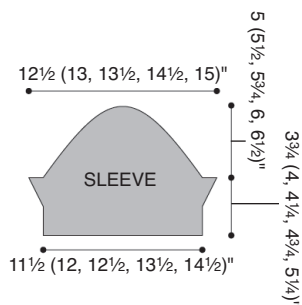
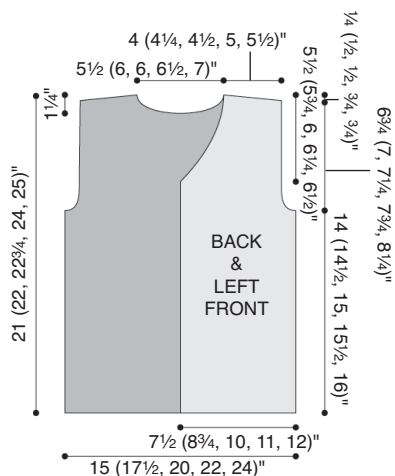
FINISHING

Block pieces to schematic measurements, slightly stretching lace to open up the pattern. Join shoulder seams. Set in Sleeves. Sew Sleeve and side seams.

Neck Edging and Front Bands

PMs for 6 buttonholes, evenly spaced, along Right Front. With RS facing, beg at lower Right Front, pick up and knit approx 3 sts for every 4 rows up Front, along neck shaping to shoulder

and down Back neck shaping; pick up and knit 1 st for ea st across Back neck BO sts, then pick up and knit approx 3 sts for every 4 rows to lower edge of Left Front. **Next row (WS):** Knit 1 row, working buttonholes at ea marker as foll: K2tog, yo. **Next row (RS):** Knit, working buttonhole yo as a st. **Next row (WS):** BO all sts kwise. Using yarn needle, weave in ends. Sew buttons opposite buttonholes.



KEY	
□	K on RS, P on WS
◻	P on RS, K on WS
⊗	K2tog
⊘	ssk
⊙	yo
⊚	dcd
◻	pattern repeat



Sample shown in photo is the machine-knit version of Mary Anne Oger's "Battenburg Lace."