



INDIAN NOTICES TO MARINERS



EDITION NO. 03 DATED 01 FEB 2011

(CONTAINS NOTICES 054 TO 065)

REACH US 24 x 7



incho-navy@nic.in
msis-incho-navy@nic.in



+91-135-2748373



National Hydrographic Office
107-A, Rajpur Road
Dehradun – 248001
INDIA



Joint Director of Hydrography
Maritime Safety Information Services
+91- 135 - 2747360-65

WWW

www.hydrobharat.nic.in

CONTENTS

<u>Section No.</u>	<u>Title</u>
I	List of Charts Affected
II	Permanent Notices
III	Temporary and Preliminary Notices
IV	Marine Information
V	Radio Navigational Warnings in force
VI	Corrections to Sailing Directions
VII	Corrections to List of Lights
VIII	Corrections to List of Radio Signals
IX	Reporting of Navigational Dangers

(PUBLISHED ON NHO WEBSITE ON 1ST & 16TH OF EVERY MONTH)

FEEDBACK: msis-incho-navy@nic.in



INSIST ON INDIAN CHARTS AND
PUBLICATIONS
Original, Authentic and Up-to-Date



© Govt. of India Copyright

No permission is required to make copies of these Notices. However, such copies are not to be commercially sold.

II

MARINER'S OBLIGATION AND A CHART MAKER'S PLEA

Observing changes at sea proactively and reporting them promptly to the concerned charting agency, is an obligation that all mariners owe to the entire maritime community towards SOLAS. Mariners are requested to notify the Chief Hydrographer to the Government of India at the above mentioned address/fax number/ E mail address immediately on discovering new or suspected dangers to navigation, changes/defects pertaining to navigational aids, and short comings in Indian charts/publications. The Hydrographic Note [Form IH – 102] is a convenient form to notify such changes. Specimen form is attached at Section IX with this notice. Also visit our website for downloading and filling up instructions for Hydrographic Note.

**Chief Hydrographer
to the Government of India**



III

EXPLANATORY NOTES

Corrections to Charts and Publications. Section I comprises List of Charts affected by the notices contained in this edition. Whereas sections II and III contain information for correcting the charts and publications. Mariners should insist on corrected charts from their chart distributors/agents.

- (a) Geographical positions given are in the horizontal datum of the current edition of the chart, unless otherwise stated.
- (b) Bearings are true, reckoned clockwise from 000° to 359°. Bearings to lights are from seaward.
- (c) Symbols referred to, are those shown on the chart INT 1 (5020).
- (d) Alterations to depth contours, deletion of depths to make way for new detail, etc; are not normally mentioned, unless they have some navigational significance.
- (e) Blocks and notes, if any, accompanying the Notices in Sections II and III are placed after Section IX.

Temporary and Preliminary Notices. These are indicated by (T) and (P) respectively after the Notice number and are placed in Section III. SI Nos. of those in force are published quarterly on 01 Jan, 01 Apr, 01 Jul and 01 Oct, and their text is published in Annual Edition of Indian Notices to Mariners. They should be inserted in pencil, by the user, on receipt.

Source of Information. A star preceding the number of a Notice indicates that the notice is promulgated by INHO based on original information received.

Sailing Directions. Corrections for the Sailing Directions (Pilots) are given in Section VI.

Lights. Corrections to Indian list of Lights are given in Section VII, where affected Light List number is quoted.

- (a) These corrections should be incorporated as per instructions given on page XI of the list of Lights.
- (b) Such correction notices to list of lights may be published in either an earlier or a later Edition of N to M than the Edition containing the Notice to the chart correction.
- (c) The range of a light given is its nominal range. Its geographical range is given in parenthesis only if it is less than the nominal range.
- (d) A star indicates that the corresponding field is to be amended and all stars indicate that new light is to be inserted.

Radio Signals. The corrections in Section VIII should be cut and pasted in the appropriate volume of the List of Radio Signals.

Radio Navigational Warnings.

- (a) These are broadcast as serially numbered NAVAREA warnings by the concerned NAVAREA coordinator through GMDSS and Area Radio Broadcasts.
- (b) They contain important information affecting navigational safety, which cannot await the publication of the next edition of N to M.
- (c) It should be borne in mind that they may be based on reports which cannot always be verified before promulgation.
- (d) It is therefore necessary to be selective, and promulgate only the more important warnings to avoid over loading users; the less important information is included in the forthcoming edition of N to M or the Chart/publication concerned.

IV

Laws and Regulations. While in the interest of the safety of shipping, the Hydrographic Office makes every endeavor to include in its publications details of the laws and regulations of all countries pertaining to navigation, it must be clearly understood: -

- (a) That no liability whatsoever can be accepted for failure to publish details of any particular law or regulation and
- (b) That publication of details of a law or regulation is solely for the safety and convenience of shipping and implies no recognition of the International validity of the law or regulation.

Correction of Charts and Publications by the Users. Notices to Mariners contain important information concerning safety of navigation at sea, hence, they should be used to keep the specified charts and publications up-to-date.

Reliance on Charts and Associated Publications. While every effort is made by the Hydrographic Office to ensure the accuracy of the information on Charts and Publications before they are published, it should be appreciated that it may not always be complete and up-to-date. The mariner must be the final judge for the reliance he can place on the information available, bearing in mind his particular circumstances, local pilotage guidance and judicious use of available navigational aids.

Use of Global Positioning System (WGS 84) positions.

- (a) The positions of hydrographic objects shown on most of the Indian charts and publications are in Everest datum. However, the positions of vessels obtained from Global Positioning System (GPS) are on World Geodetic System 1984 datum. There will always exist a difference in the position values obtained by visual fixing (Everest Datum) and GPS position (WGS 84 datum).
- (b) Wherever these differences have been ascertained, their average values are published as a Cautionary Note on the chart concerned, as shifts in Latitude and Longitude. Whilst plotting GPS positions on charts, the shift values as given on the chart must be applied, before making any assessment of the navigational situation vis-à-vis the other charted information.
- (c) These datum shift values are not uniform, particularly in areas off Andaman and Nicobar and Lakshadweep Islands, as these places are not linked to mainland network (Everest datum). Mariners are advised to use alternate source of position information such as Visual or Radar, particularly when closing the shore or navigating in the vicinity of dangers.

Source Data on Charts. All Indian charts contain specific information on their source of hydrographic data. In areas where the source data is very old, incomplete and less reliable, the mariner must use such charts with prudence. Mariner should always use the largest scale charts available for the area. Apart from being the most detailed, the larger scale charts are usually corrected first. Hydrographic information may be sparse on small scale charts. On such charts, a charted shoal may be in error as regards position, least depth and extent. Uncharted dangers may also exist, particularly in areas away from well-established routes. Mariners must exercise due caution.

Further Guidance. The Mariner's Hand Book (NP 100) gives full explanation on the use of charts and the type of information contained on charts. In their own interest, all users of charts should refer to it.

NEWLY PUBLISHED INDIAN CHARTS, ENC'S AND PUBLICATION

1. The new Indian Chart that is available for mariners in the market is as follows:-

<i>Chart No.</i>	<i>Date of Publication</i>	<i>Title, Limits & Description</i>	<i>Scale</i>	<i>Folio</i>	<i>Price</i>
41(INT757)	15-12-2010	ANDAMAN SEA <u>Limits</u> 04° 50'.00N; 91° 40'.00E. 18° 24'.50N; 100° 32'.50E.	15,00,000	6	Rs. 1527.00

2. The new edition Indian Charts that are available for mariners in the market are as follows:-

<i>Chart No.</i>	<i>Date of Publication</i>	<i>Title, Limits & Description</i>	<i>Scale</i>	<i>Folio</i>	<i>Price</i>
301	15-12-2010	APPROACHES TO HUGLI RIVER <u>Limits</u> 20° 45'.00N; 87° 44'.00E. 22° 02'.00N; 88° 38'.00E.	1,50,000	5	Rs. 1527.00
2020	31-10-2010	MORMUGAO AND PANAJI <u>Limits</u> 15° 18'.70N; 73° 42'.00E. 15° 32'.00N; 73° 51'.00E.	25,000	3	Rs. 1527.00

3. The Indian Charts permanently withdrawn are as follows:-

<i>Chart No.</i>	<i>Date of Publication</i>	<i>Title</i>	<i>On Publication of New Chart / Edition</i>	<i>Date of Publication</i>
41	30-11-2006	ANDAMAN SEA	41	15-12-2010
301	31-01-2007	APPROACHES TO HUGLI RIVER	301	15-12-2010
2020	30-06-2007	MORMUGAO AND PANAJI	2020	31-10-2010

4. The new edition Indian Electronic Navigation Charts that are available for mariners in the market are as follows:-

<i>ENC Cell Name</i>	<i>Chart No.</i>	<i>Title</i>	<i>Publication Date</i>
IN3206VD	206	VERAVAL TO DIU HEAD	31-01-2011*
IN3207DG	207	DIU HEAD TO GOPNATH POINT	31-01-2011*

5. The Indian Electronic Navigation Charts permanently withdrawn are as follows:-

<i>ENC Cell Name</i>	<i>Chart No.</i>	<i>Title</i>	<i>Publication Date</i>
IN3206VD	206	VERAVAL TO DIU HEAD	14-10-2004*
IN3207DG	207	DIU HEAD TO GOPNATH POINT	14-10-2004*

* Issue Date

VI

6. The forthcoming Indian Charts are as follows:-

<i>Chart No</i>	<i>Title</i>	<i>Scale</i>	<i>Remarks</i>
261	EIGHT DEGREE CHANNEL TO CAPE COMORIN	3,00,000	New Edition
2004(INT 7359)	KOCHI HARBOUR	25,000	New Edition
2022 (INT 7345)	APPROACHES TO MORMUGAO	60,000	New Edition
2031	OKHA HARBOUR	37,500	New Edition
2036	MURUD JANJIRA HARBOUR	25,000	New Edition
2038	RAJAPUR BAY AND VIJAYDURG HARBOUR	25,000	New Edition
2073	APPROACHES TO KUNDAPURA	37,500	New Edition
2077	HARNAI ANCHORAGE; PAVAS ANCHORAGE	30,000 25,000	New Edition
3002(INT 7410)	APPROACHES TO VISHAKHAPATNAM	60,000	New Edition
3501	KANKESANTURAI HARBOUR	12,500	New Chart
4042	CHOWRA ISLAND	15,000	New Chart

Availability of ENC's.

The complete folios of Official Indian ENC's are distributed worldwide through JEPPESEN MARINE (formerly C-MAP), UKHO and Norwegian Hydrographic Service. UKHO distributes Indian ENC's through the world wide network of their agents and distributors. Updates are also made available as per the existing policy of the distributor. Mariners and other ENC users may contact the under mentioned for further details:

<p>The Chief Hydrographer to the Government of India National Hydrographic Office 107-A, Rajpur Road Dehradun- 248001 Uttarakhand, India Tele: +91-135- 2747365, Fax: +91-135-2748373 Email: inho-navy@nic.in msis-inho-navy@nic.in sales-inho-navy@nic.in Website: www.hydrobharat.nic.in</p>	<p>Director, JEPPESEN MARINE Jeppesen India Pvt. Ltd. 505, Raheja Arcade, Sector-11, CBD Belapur, Navi Mumbai 400614 India Ph: 91-22- 65103668 Fax: 91- 22- 67939504 Email: info@c-map.co.in Website: www.c-map.co.in</p>
<p>United Kingdom Hydrographic Office Admiralty Way, Taunton, Somerset TA1 2DN, UK Tel: +44 (0) 1823 337900 Fax: +44 (0) 1823 330561, 1823 284077 Telex: 46274 Email: helpdesk@ukho.gov.uk Web site: www.ukho.gov.uk</p>	<p>Director General Norwegian Hydrographic Service, Postbox 60, 4001 Stavanger Telephone - +47 - 51 85 87 00 Fax - + 47 - 51 85 87 08 E-mail:-gerry.larsson-fedde@statkart.no Website: - www.primar.org</p>

SECTION – I

The list of charts affected by the Notices 054 to 065 contained in this edition are as follows:

CHART NUMBER	FOLIO NO.	NOTICE NO.
21	2	064(T)
22(INT 752)	3	064(T)
31	5	065(T)
32(INT 754)	5	065(T)
33	5	063
41	6	060
208	2	054
209	2	054
212	3	055
227	1	058
256(INT 7340)	3	055
266	4	058
268(INT 7353)	4	064(T)
273	4	064(T)
292(INT 7021)	2	064(T)
354(INT 7408)	5	065(T)
391	5	065(T)
405	6	060
406	6	060
409	6	056
473(INT 7031)	6	060
2020	3	057
2032	3	063
2036	3	063
2044	2	054
2061	1	058
2077	3	055
2101	2	054
3031	5	059
4003	6	061
4013	6	061
4015	6	061
7705(INT 705)	1	064(T)
8004	1	062

SECTION – II
PERMANENT NOTICES

***054/(03/11) INDIA – WEST COAST – Approaches to Hazira – Buoys.**

Source: INS Nirdeshak - RoS B-153

(HJ/1130/17)

Chart 208 [previous update 179/10]

Move	buoy	from:	21° 10′.58N., 72° 34′.30E.
		to:	21° 10′.91N., 72° 34′.29E.
	buoy	from:	21° 09′.08N., 72° 32′.82E.
		to:	21° 08′.97N., 72° 32′.61E.

Chart 209 [previous update 297/09]

Move	buoy	from:	21° 10′.58N., 72° 34′.30E.
		to:	21° 10′.91N., 72° 34′.29E.
	buoy	from:	21° 09′.08N., 72° 32′.82E.
		to:	21° 08′.97N., 72° 32′.61E.

Chart 2044 [previous update 136/10]

Move	buoy	from:	21° 10′.58N., 72° 34′.30E.
		to:	21° 10′.91N., 72° 34′.29E.
	buoy	from:	21° 09′.08N., 72° 32′.82E.
		to:	21° 08′.97N., 72° 32′.61E.

Chart 2101 [previous update 297/09]

Move	buoy	from:	21° 10′.58N., 72° 34′.30E.
		to:	21° 10′.91N., 72° 34′.29E.
	buoy	from:	21° 09′.08N., 72° 32′.82E.
		to:	21° 08′.97N., 72° 32′.61E.

***055/(03/11) INDIA – WEST COAST – Harnai Anchorage – Legend. Wreck.**

Source: INS Investigator – RoS C-514

(HJ/1030/76)

Chart 2077 [previous update 260/10]

Substitute	legend, “Suvarndurg Fort” for “Janjira Fort” centered on:	17° 49′.00N., 73° 04′.82E.
------------	---	----------------------------

Chart 212 [previous update 140/10]

Substitute	legend, “Suvarndurg Fort” for “Janjira Fort” centered on:	17° 48′.86N., 73° 04′.40E.
------------	---	----------------------------

Chart 256 [previous update 140/10]

Substitute	legend, “Suvarndurg Fort” for “Janjira Fort” centered on:	17° 49′.00N., 73° 03′.75E.
------------	---	----------------------------

***056/(03/11) INDIA – ANDAMAN SEA – Great Nicobar Island – Indira Point – South Bay – Coastline. Depths. Anchorage. Contours. Light.**

Source: NHO Dehradun

(HJ/928/66)

Chart 409 [previous update 286/10]

Insert	accompanying block showing amendments to Coastline, Depths, Anchorage, Contours and Light centered on:	06° 45′.44N., 93° 50′.40E.
--------	--	----------------------------

***057/(03/11) INDIA – WEST COAST – Port of Mormugao – Buoy.**

Source: INM 268/10

(HJ/1030/56)

Chart 2020 [previous update N.E. 31 Oct 10]


Move buoy No. 9 to:

15° 25′.16N., 73° 47′.63E.

***058/(03/11) INDIAN OCEAN – MALDIVES – Male Atoll – Wreck.**

Source: INS Nirupak – RoS O(N) - 175

(HJ/930/46)

Wreck of Lady Christina.**Chart 227** [previous update 047/00] [WGS84 DATUM]Insert  04° 46′.02N., 73° 23′.24E.Delete  PA 04° 45′.15N., 73° 22′.72E.**Chart 266** [previous update 266/08]Insert  04° 46′.02N., 73° 23′.24E.Delete  PA 04° 46′.85N., 73° 24′.10E.**Chart 2061** [previous update 622/07]Insert  04° 46′.02N., 73° 23′.24E.Delete  PA 04° 46′.85N., 73° 24′.10E.***059/(03/11) INDIA – EAST COAST – Baleshwar Roads (Balasore Roads) - Towers.**

Source: INS Sandhayak ROS L-77

(HJ/1129/12)

Chart 3031 [previous update N.C. 31 Jul 03]Insert  FISHERIES RADIO TR 21° 28′.10N., 87° 03′.43E.Delete  FISHERIES RADIO TR 21° 28′.23N., 87° 03′.08E.***060/(03/11) INDIA – ANDAMAN ISLANDS – Little Andaman Island – Legend. Wreck. Accompanying Note.**

Source: INS Nirupak – RoS M – 181 & INM 051/(02/11)

(HJ/1028/07)

Chart 41 [previous update N.C. 15 Dec 10]Insert  PA 10° 30′.10N., 92° 34′.12E.Delete  10° 57′.00N., 92° 37′.00E.**Chart 473** [previous update 279/10]Delete  10° 57′.00N., 92° 37′.05E.

Substitute legend, “Ariel Ledge”, for “Ariel Ledge PA” centered on: 10° 49′.50N., 92° 36′.30E.

the accompanying note, “DUNCAN PASSAGE – PINNACLE ROCKS”, centered on: 14° 11′.00N., 94° 11′.00E.


Chart 405 [previous update 286/10]Delete  10° 57′.00N., 92° 37′.05E.

Substitute legend, “Ariel Ledge”, for “Ariel Ledge PA” centered on: 10° 55′.45N., 92° 34′.90E.

the accompanying note, “DUNCAN PASSAGE – PINNACLE ROCKS”, for “DUNCAN PASSAGE” centered on: 11° 28′.80N., 93° 17′.50E.

***060/(03/11) INDIA – ANDAMAN ISLANDS – Little Andaman Island – Legend. Wreck. Accompanying Note. (continued)**

Chart 406 [previous update 051/11]

Delete		10° 57'·00N., 92° 37'·05E.
Substitute	legend, “Ariel Ledge”, for “Ariel Ledge PA” centered on: the accompanying note, “DUNCAN PASSAGE – PINNACLE ROCKS”, centered on:	10° 55'·45N., 92° 34'·90E. 10° 53'·80N., 92° 53'·00E.

***061/(03/11) INDIA – ANDAMAN ISLANDS – Port Cornwallis – Ariel bay – Lacam Harbour – Sea plane Landing Area. Sea Plane Anchorage.**

Source: Harbour Master, PMB, Port Blair

(HJ/1028/36)

Chart 4003 [previous update 229/10]

Insert	seaplane landing area,  , joining:	(a) 13° 17'·10N., 93° 01'·75E. (b) 13° 17'·30N., 93° 01'·60E. (c) 13° 17'·80N., 93° 01'·75E. (d) 13° 17'·58N., 93° 02'·20E. and (e) 13° 18'·70N., 93° 03'·21E. (f) 13° 18'·67N., 93° 03'·00E. (g) 13° 19'·21N., 93° 03'·30E. (h) 13° 19'·10N., 93° 03'·51E.
--------	---	---

 (Pontoon), centered on:	13° 17'·30N., 93° 01'·41E. 13° 19'·30N., 93° 03'·51E.
legend, “Landing Area –I”, within:	(a) - (d) above
legend, “Landing Area –II”, within:	(e) - (h) above

Chart 4003 (plan – Ariel Bay) [previous update 229/10]




Insert	seaplane landing area,  , joining:	(a) 13° 17'·10N., 93° 01'·75E. (b) 13° 17'·30N., 93° 01'·60E. (c) 13° 17'·70N., 93° 01'·72E. (N Border) and (d) 13° 17'·70N., 93° 01'·96E. (N Border) (e) 13° 17'·58N., 93° 02'·20E. (a) - (e) above
legend, “Landing Area –I”, within:	(a) - (e) above	
 (Pontoon), centered on:	13° 17'·30N., 93° 01'·41E.	

Chart 4015 [previous update 228/08]

Insert	seaplane landing area,  , joining:	12° 02'·61N., 92° 58'·10E. 12° 02'·51N., 92° 58'·31E. 12° 03'·08N., 92° 58'·50E. 12° 03'·11N., 92° 58'·31E.
--------	---	--

 (Pontoon), centered on:	12° 02'·51N., 92° 58'·41E.
---	----------------------------

Chart 4013 [previous update 348/09]

Insert	seaplane landing area,  , joining:	12° 02'·61N., 92° 58'·10E. 12° 02'·51N., 92° 58'·31E. 12° 03'·08N., 92° 58'·50E. 12° 03'·11N., 92° 58'·31E.
 (Pontoon), centered on:	12° 02'·51N., 92° 58'·41E.	

***061/(03/11) INDIA – ANDAMAN ISLANDS – Port Cornwallis – Ariel bay – Lacam Harbour – Sea plane Landing Area. Sea Plane Anchorage. (continued)**

Chart 4013 (plan - Lacam Harbour) [previous update 348/09]

Insert seaplane landing area, , joining:

12° 02'·61N., 92° 58'·10E.
 12° 02'·51N., 92° 58'·31E.
 12° 03'·08N., 92° 58'·50E.
 12° 03'·11N., 92° 58'·31E.

 (Pontoon), centered on: 12° 02'·51N., 92° 58'·41E.

062/(03/11) UNITED ARAB EMIRATES – Sharjah (Ash Shariqah) – Sharjah Offshore Oil Terminal Westwards – Cautionary note.

Source: BA Notice – 5371/10.

(HJ/1132/54)

Chart 8004 [previous update 291/10] WGS84 DATUM

Substitute the accompanying note, RESTRICTED AREAS, centered on: 25° 57'·2N., 57° 22'·5E.

***063/(03/11) Miscellaneous Correction**

Source: NHO Dehradun

Amend **INM 042/(02/11)** to read as follows:

Chart	Previous Updates	Details
2032	141/10	Insert Chart No. 2104 and Magenta limit as follows: North: 08° 55'·00N., East: 76° 37'·70E South: 08° 50'·60N., West: 76° 31'·00E
2036	559/08	Insert Chart No. 2103 and Magenta limit as follows: North: 18° 19'·80N., East: 72° 59'·90E South: 18° 15'·50N., West: 72° 53'·00E

INM 051/(02/11) to read as follows:

for Chart 33 : Read previous update 248/10

SECTION – III
TEMPORARY AND PRELIMINARY NOTICES

***064(T)/(03/11) INDIA – WEST COAST – Arabian Sea – Data Buoys. Tsunami Buoy.**

Source: NIOT Chennai.

(HJ/1031/93)

1. Following yellow coloured data buoys characteristics Fl.Y.20s4M, 3m dia and 3.5m height mast with radar reflector & mast carrying sensor laid in following positions:

Buoy No.	Position	Charts affected
AD01	19° 00'·20N., 66° 59'·64E.	21 – 292
AD02	14° 59'·94N., 68° 59'·98E.	7705(INT 705)
*AD03	12° 01'·03N., 68° 58'·33E.	7705(INT 705)
*AD04	08° 30'·03N., 73° 00'·73E.	22 – 273
*AD05	10° 29'·60N., 72° 16'·22E.	22 – 268 – 273

2. A Tsunami buoy yellow coloured characteristics Fl.20s4M, 2.1m dia and 4.1m height mast with radar reflector & mast carrying sensor laid in following position:

Buoy No.	Position	Chart affected
*STB02	20° 48'·00N 65° 20'·41E	21.

* indicates new or revised entries.

3. All vessels operating in vicinity are to maintain a clearance of 01 NM off the moored buoys.

4. *Former INM 040(T)/11 is cancelled.*

***065(T)(03/11) INDIA – EAST COAST – Sacramento Shoal to Kalingapatnam – Unexploded Charges.**

Source: INS Airawat

(HJ/1029/76)

Unexploded charges reported dumped in following positions by INS Airawat:

Sl No.	Position	Date	Charts Affected
(a)	17°12'·00N., 83° 28'·00E	24 Dec 10	31 – 32(INT 754) – 391 – 354(INT 7408).
(b)	17°14'·00N., 83° 35'·00E	24 Dec 10	31 – 32(INT 754) – 391 – 354(INT 7408).

SECTION – IV
MARINE INFORMATION

MUMBAI NAVTEX COAST STATION

MSI Promulgation by Mumbai NAVTEX Coast Station position 19° 05'.00 N, 072° 50'.00 E is closed for maintenance.

(Source - NAVAREA VIII Warning 305/08)

Distribution of Indian Paper Charts and Nautical Publications

Indian Nautical Charts and Publications from National Hydrographic Office, India are now available globally. Details of overseas chart agents are as follows:-

<p>*JEPPESEN MARINE Jeppesen India Pvt. Ltd. 505, Raheja Arcade, Sector-11, CBD Belapur, Navi Mumbai 400 614 Ph: 91 22 65103668 Fax: 91 22 67939504 Email: info@c-map.co.in</p>	<p>*JEPPESEN MARINE Jeppesen Norway AS P.O. 212, N-4379, Egersund, Norway Ph: 0047 51 464700 Fax: 0047 51 464701 Email: info@c-map.no Site: www.c-map.no</p>	<p>C-Map US Commercial 133 Falmouth Road, Building 2, Postal Code: 02649, Mashpee, MA, America Ph: +1 (508) 477 8010 Fax: +1 (508) 539 4381 Email: info@c-map.com</p>
<p>C-Map (UK) Ltd. Systems House Delta Business Park Salterns Lane, Fareham, PO16 0QS, United Kingdom, Ph: +44 (0) 1329 517777 Fax: +44 (0) 1329 517778 Email: info@c-map.co.uk</p>	<p>Mari-Sys Pte Ltd. 20 Ayer Rajah Crescent, 08-21, SE 139964, Republic of Singapore Ph: +65 6776 1898 Email: info@mari-sys.com</p>	<p>Bogerd Martin NV, Oude Leeuwenrui 37 2000 Antwerp, Belgium Ph: +32 (3) 2134170 Fax: +32 (3) 2326167 Email: sales@martin.be Site: www.martin.be</p>
<p>Bogerd Martin Tianjin(China Branch) 2-B101 FTZ Hi-Tech Development Centre 131 Haibin 9 Road 300461 Tianjin China Ph: +86 22 257 62 721 Fax: +86 22 257 62 722 Email: charts-tj@martincn.com</p>	<p>C-Map Holland Paleiskade100 PO Box 7 1781 AR Den Helder, Holland Ph: +31 223 616 700 E Mail: CorMallie cor@chartworx.nl</p>	
<p>* Indicates C Map Norway AS has changed name to Jeppesen Marine Norway AS. Indicates C Map India has changed name to Jeppesen India.</p>		

List of Indian Chart Agents.

M/s OSA Books and Periodicals, R-246, Greater Kailash -I New Delhi - 110 048 Tel/Fax: 011-46557337, Mob: 9910891631, 9810705062 Email: ravipani@indiatimes.com	M/s Sterling Book House, 181, Dr. DN Road Fort, Mumbai – 400 001 Tel: 91-22-22612521, Fax: 91-22-22623551 Email : sbh@vsnl.com
M/s Global Charts & Nav. Aids Pvt. Limited 1A, Goa Mansion, Ground Floor 58, Dr. Sunderlal Bahl Path (Goa Street) Fort, Mumbai - 400 001 Tel: 91-22-22626318, 22626380, Fax: 91-22-22621488 Email: sales@bogerdmartin.com, sarmarin@vsnl.com	M/s EW Stevens & Co. (Pvt.) Ltd. Mackinnon Mackenzie Bldg, Ground Floor, 4 Shoorji Vallabhdas Marg, Mumbai-400 038 Tel: 91-22-22618567, Fax: 022-22619146 Email: ewsbom@bom3.vsnl.net.in
M/s C & C Marine Combine 25 Bank Street, 1 st Floor, Mumbai - 400 023 Tel: 91-22- 22660525, 22661937, 22672143 Fax: 91-22-22670896 Email: ccmarine@bom5.vsnl.net.in	M/s Maritime Charts and Publications New No. 221, Old No. 107, Unit No. F9, Hotel Chennai Palace, Angappa Naicken Street Chennai – 600001, Telefax : 044-42165008 Email: maritimeindia@airtelmail.in
M/s SVR Chart Agencies Door No.50-81-35/6, Santhipuram, Seetammapeta, Visakhapatnam-530 016 Tele Fax: 0891-2799471, Cell: 9440132553, 9849120988, 9885308200 Email : mahalakshmitravels@hotmail.com	M/s Jeppesen India Pvt. Ltd 505, Raheja Arcade, Sector 11 CBD, Belapur Navi Mumbai – 400 614 Tel: +91 22 5610 3668, Fax: +91 22 55939504 Mob: +9322238542 Email: raj_chakravorty@yahoo.com, info@c-map.co.in Website: www.c-map.co.in
M/s JM Maritime Services 24/24C Kavarana Building Ground Floor, Wadi Bunder P.D. Mellow Road, Mumbai – 400 009 Tel: +91 22 23736956/6907, Fax: 022 - 23725083 Cell: +91 9820788357 Email : jmms@mtnl.net.in, charts@ mtnl.net.in	M/S Inspire Shipping, 46a, Ashok Chamber, Broach Street, Masjid Bunder (E), Mumbai – 400 009 Fax : 022 – 27713146 Email : info@inspireship.com, pramod@inspireship.com
M/S Lift-O-Marine 20 Bhut Ghat Street (Near No. 3 N. S. Dock) Kolkata – 700043 Tel: +91-33-2439 5731/ 2482, Cell: +91-9331936587, 9830056801 Fax: +91-33-2439 2102, Email: liftomarine@yahoo.co.in	M/s Global Marine Infratech Pvt. Ltd. Siksha Sandan, Ground Floor, ND-7, VIP Area, IRC Village Bhubaneswar – 751015 Tel: +91-674-2550599, Fax: +91-674-2551899 Email: ashiskantha@gmiindia.in; Web: www.gmiindia.in

SECTION – V
NAVAREA - VIII WARNINGS IN FORCE

1. For details of NAVAREA limits and organisation/coordination, please refer to Notice No. 12 of the Special edition of Indian Notice to Mariners – 2008.

2. Navarea VIII Warnings Inforce as on 31 Jan 11.

2010 SERIES - 380 470 508 520 528 534 581 629 630 648 746 747 761 771 776 779 804 817

2011 SERIES - 008 010 017 030 040 042 044 045 048 050 051 057 058 060 064 065 066 067
068 071 072 073 076 078 079 080 081 082 083 084

3. NAVAREA VIII Warnings issued during the period from 16 Jan 11 to 31 Jan 11 (both dates inclusive) are as tabulated below:-

<p>038. Self Cancelling. Indian Ocean-Somalia East Coast. Charts INT 71 INT 72 INT 703. Piracy. F/V Shih FU No 1 conducting mothership operations in following positions 09-03N 053-27E at 151630Z JAN 06-40N 050-10E at 161815Z JAN.</p> <p>2. Mariners to exercise extreme caution and keep 100 miles clear of this position.</p>
<p>039. Self Cancelling. Cancel NAVAREA VIII messages 461, 736, 781, 822 of 2010 and 022 of 2011 issued by INM 02 of 2011.</p>
<p>040. India South Coast-Off Kudankulam. Charts 32 223 260 263 INT 71 INT 706. Hydrographic survey will be carried out by hydrographic vessel from 18 Jan to 01 Feb 2011 in area bounded by: (a) 08-00N 077-30E (b) 08-15N 077-30E (c) 08-15N 077-52E (d) 08-00N 077-52E</p> <p>2. Wide berth requested.</p> <p>3. Cancel this message on 02 Feb 2011.</p>
<p>041. India West Coast - Trivandrum. Charts 22 32 222 260 INT 706. RH 200 rocket launch from Thumba Equatorial Rocket Launching Station 08-31.98N 076-52.05E between 1230 UTC to 1430 UTC on 18 Jan 2011.</p> <p>2. Danger zones: (a) Sector of radius 05 NM from launcher between azimuth angles 190 degree and 300 degree. (b) Sector of radii 45 NM and 75 NM from the launcher between azimuth angles 220 degree and 260 degree.</p> <p>3. Cancel this message on 19 Jan 2011.</p>
<p>042. India East Coast-Bay of Bengal. Charts 31 32 INT 71 INT 706. Survey vessel Geowave Champion will carry out 3D seismic survey from 18 Jan to 15 Feb 2011 in area bounded by: (a) 15-00.00N 083-59.50E (b) 15-00.00N 084-30.50E (c) 14-07.00N 084-30.50E (d) 14-07.00N 083.59.50E</p> <p>2. The vessel will be towing ten marine seismic cable of length 8100 metres. The cable will be submerged 08 metre below the water surface and will also be on the surface at times. Yellow tail buoy with a flashing light attached at the end of cable.</p> <p>3. All vessels operating in the area to exercise caution and give wide berth of 06 NM around the vessel.</p> <p>4. Cancel this message on 16 Feb 2011.</p>
<p>043. India East Coast- Chennai. Charts 32 33 313 356 357 3001 3004 INT 706. Firing practice by Naval Coast Battery from position 13-07.17N 080-18.70E between 0530 UTC to 0730 UTC on 28 Jan 2011.</p> <p>2. Danger zone sector of 11 NM radius between 045 degree and 075 degree from gun position.</p> <p>3. Safe flying height 12800 metres.</p> <p>4. Cancel this message on 29 Jan 2011.</p>
<p>044. Refer NAVAREA VIII message 010 of 2011. India West Coast-Arabian Sea. Charts 21 22 292 293 INT 705. Following rigs moved to new positions ABAN ICE 21-31.61N 068-27.26E ABAN III 19-15.19N 072-02.16E TRIDENT 12 18-44.59N 072-19.62E ABAN IV De Mobilised</p> <p>2. Wide berth requested.</p>

<p>045. Refer NAVAREA VIII message 008 of 2011. India East Coast-Bay of Bengal. Charts 31 32 355 INT 706. Rig Sagar Vijay moved to position 16-32.63N 082-23.95E.</p> <p>2. Wide berth requested.</p>
<p>046. Self Cancelling. Arabian Sea and Somalia East Coast. Charts INT 71 INT 72 INT 73 INT 701 INT 703 INT 705. Piracy. M/Vessels attacked in following positions: 03-10N 051-11E at 182303Z JAN 13-28N 065-06E at 190453Z JAN</p> <p>2. Mariners to exercise extreme caution and keep 100 miles clear of this position.</p>
<p>047. Cancel Navarea VIII message 036 of 2011. India West Coast – Arabian Sea. Charts 22 293 INT 71 INT 705. Survey vessel Geowave Commander will carry out 3D seismic survey till 30 Jan 2011 in area bounded by:</p> <p>(a) 14-59N 071-46E (b) 14-59N 072-29E (c) 14-05N 072-30E (d) 14-05N 071-46E</p> <p>2. The vessel will be towing six seismic streamers of length 8100 metres. Each trailing end attached to yellow coloured tail buoy with white flashing lights.</p> <p>3. All vessels operating in vicinity to exercise caution and give wide berth of 05 NM around the vessel.</p> <p>4. Cancel this message on 31 Jan 2011.</p>
<p>048. Andaman Sea-Southern Part. Charts 41 9001 INT 70 INT 73 INT 706. Fishing vessel Jen JYI Rong capsized in position 05-49N 094-07E on 18 Jan 2011 at 0625 UTC.</p> <p>2. Mariners transiting through area to keep sharp lookout for survivors and exercise caution.</p>
<p>049. Self Cancelling. Cancel NAVAREA VIII message 399 of 2010. Port hand buoy No 2 re-established in position 17-19.30N 073-10.15E.</p>
<p>050. Indian Ocean-Southeast Part. Charts INT 71 INT 73 INT 707. Observation buoy number 18 (Triton Buoy) deployed in position 01-36.18S 090-04.44E.</p> <p>2. Mariners to exercise caution.</p>
<p>051. India East Coast-Dhamra. Charts 31 351 352 3017 INT 706. Hydrographic survey of approaches to Dhamra port will be carried out by hydrographic vessel from 20 Jan to 04 Feb 2011 in area bounded by:</p> <p>(a) 20-47.45N 086-56.05E (b) 20-47.45N 087-10.25E (c) 20-56.20N 087-10.25E (d) 20-56.20N 086-56.05E</p> <p>2. Wide berth requested.</p> <p>3. Cancel this message on 05 Feb 2011.</p>
<p>052. India East Coast-Bay of Bengal. Charts 31 32 INT 71 INT 706. Firing will be carried out by naval ships from 27 to 28 Jan 2011 between 0300 UTC 0830 UTC in area bounded by:</p> <p>(a) 14-10N 082-36E (b) 15-00N 083-10 E (c) 14-20N 083-52E (d) 13-31N 083-15.5E</p> <p>2. Safe flying height 13000 metres.</p> <p>3. Cancel this message on 29 Jan 2011.</p>
<p>053. India West Coast- Arabian Sea. Charts 21 22 292 INT 705. Firing by naval ships will be carried out on 27 Jan 2011 from 0230 utc to 0630 UTC. Danger area bounded by:</p> <p>(a) 20-20N 069-32E (b) 20-02N 070-08E (c) 19-27N 069-50E (d) 19-45N 069-15E</p> <p>2. Safe flying height 8000 metres.</p> <p>3. Cancel this message on 28 Jan 2011.</p>
<p>054. India East Coast- Off Visakhapatnam. Charts 31 32 354 INT 706. Experimental Rocket Launch scheduled between 0430 UTC and 0930 UTC from 30 Jan to 01 Feb 2011. Danger zone bounded by following points:</p> <p>(a) 17-39.26N 083-38.35E (b) 17-38.68N 083-40.68E (c) 17-29.56N 084-04.90E (d) 15-13.75N 086-17.43E (e) 12-25.05N 088-19.73E (f) 11-35.51N 087-14.10E (g) 11-04.73N 085-57.25E (h) 14-12.31N 084-30.81E (j) 17-12.16N 083-33.61E (k) 17-37.06N 083-37.75E</p> <p>2. No over flight and shipping activity permissible within the above mentioned danger zone.</p> <p>3. Cancel this message on 02 Feb 2011.</p>
<p>055. India West Coast – Mormugao. Chart 22 214 215 257 2022 2028 INT 705 INT 706. Firing by Naval Coast Battery on 28 Jan 2011 between 0430 UTC to 0730 UTC. Danger arc within sector 200 degree to 260 degree upto range 20 NM from position 15-24.60N 073-47.10 E.</p> <p>2. Safe flying height 6500 metres.</p> <p>3. Mariners to exercise caution.</p> <p>4. Cancel this message on 29 Jan 2011.</p>

<p>056. Self Cancelling. India West Coast- Off Mumbai. Charts 21 22 292 293 INT 71 INT 705. Heavy leakage of light crude oil in position 19-07.03N 072-06.00E on 21 Jan 2011 at 0315 UTC. Presently leakage plugged by ONGC.</p> <p>2. Mariners are requested to keep clear of 20 NM around the area to avoid hampering the movements of vessels involve in oil spill recovery.</p>																				
<p>057. India West Coast – Arabian Sea. Charts 22 268 273 INT 71 INT 705 INT 706. Moored buoys deployed in following positions:</p> <table border="0"> <thead> <tr> <th style="text-align: left;">Buoy</th> <th style="text-align: left;">Position</th> </tr> </thead> <tbody> <tr> <td>(a) AD 04</td> <td>08-30.03N 073-00.73E</td> </tr> <tr> <td>(b) AD 05</td> <td>10-29.60N 072-16.21E</td> </tr> </tbody> </table> <p>2. Buoys are yellow coloured discuss shaped, 03 metre dia, 3.5 metre mast carrying meteorological sensors fitted with radar reflectors. Data transmission through INMARSAT modem once in 1 hour/ 3 hour to shore station at NIOT Chennai. The buoys are integrated with yellow beacon light, flashes 05 Sec and is off for 15 Sec range 04 NM.</p> <p>3. Mariners are requested to keep clear of 01 NM from buoy position.</p>	Buoy	Position	(a) AD 04	08-30.03N 073-00.73E	(b) AD 05	10-29.60N 072-16.21E														
Buoy	Position																			
(a) AD 04	08-30.03N 073-00.73E																			
(b) AD 05	10-29.60N 072-16.21E																			
<p>058. Cancel NAVAREA VIII message 037 of 2011. India West Coast – Off Jakhau. Charts 21 291 INT 71 INT 705. Survey vessel Geo Natuna will carry out seismic survey till 15 Mar 2011 in area bounded by:</p> <table border="0"> <tbody> <tr> <td>(a) 23-21.41N</td> <td>068-13.18E</td> <td>(b) 23-03.00N</td> <td>068-45.00E</td> </tr> <tr> <td>(c) 22-54.46N</td> <td>068-45.00E</td> <td>(d) 22-54.46N</td> <td>068-23.66E</td> </tr> <tr> <td>(e) 22-54.10N</td> <td>068-07.83E</td> <td>(f) 23-00.00N</td> <td>068-10.00E</td> </tr> </tbody> </table> <p>2. The vessel will be towing 04 seismic streamers of length 6000 metres. Each trailing end attached to tail buoy with white flashing lights and radar reflector.</p> <p>3. All vessels operating in vicinity to exercise caution and give wide berth of 02 NM abeam, ahead and 05 NM astern of the vessel.</p> <p>4. Cancel this message on 16 Mar 2011.</p>	(a) 23-21.41N	068-13.18E	(b) 23-03.00N	068-45.00E	(c) 22-54.46N	068-45.00E	(d) 22-54.46N	068-23.66E	(e) 22-54.10N	068-07.83E	(f) 23-00.00N	068-10.00E								
(a) 23-21.41N	068-13.18E	(b) 23-03.00N	068-45.00E																	
(c) 22-54.46N	068-45.00E	(d) 22-54.46N	068-23.66E																	
(e) 22-54.10N	068-07.83E	(f) 23-00.00N	068-10.00E																	
<p>059. Self Cancelling. NAVAREA VIII-Warning inforce</p> <p>2010 Series-380 470 508 520 528 534 581 629 630 648 675 746 747 761 771 776 779 804 817</p> <p>2011 Series- 005 008 009 010 013 017 019 021 025 026 029 030 040 042 043 044 045 046 047 048 049 050 051 052 053 054 055 056 057 058</p>																				
<p>060. India West Coast – Off Jakhau. Charts 21 291 INT 71 INT 705. Survey vessel MT Ferrari will carry out seabed hazard survey from 22 Jan to 30 Apr 2011 in area bounded by:</p> <table border="0"> <tbody> <tr> <td>(a) 23-27.08N</td> <td>068-14.00E</td> <td>(b) 23-27.08N</td> <td>068-23.75E</td> </tr> <tr> <td>(c) 23-10.00N</td> <td>068-35.15E</td> <td>(d) 23-03.00N</td> <td>068-45.00E</td> </tr> <tr> <td>(e) 22-54.47N</td> <td>068-45.00E</td> <td>(f) 22-54.47N</td> <td>068-23.75E</td> </tr> <tr> <td>(g) 22-54.10N</td> <td>068-07.83E</td> <td>(h) 23-00.00N</td> <td>068-10.00E</td> </tr> </tbody> </table> <p>2. The vessel will be towing side scan sonar tow fish approximately 150 metres behind the vessel at 10 metre height from seabed.</p> <p>3. All vessels operating in vicinity to exercise caution and give wide berth of 01 NM around the vessel.</p> <p>4. Cancel this message on 01 May 2011.</p>	(a) 23-27.08N	068-14.00E	(b) 23-27.08N	068-23.75E	(c) 23-10.00N	068-35.15E	(d) 23-03.00N	068-45.00E	(e) 22-54.47N	068-45.00E	(f) 22-54.47N	068-23.75E	(g) 22-54.10N	068-07.83E	(h) 23-00.00N	068-10.00E				
(a) 23-27.08N	068-14.00E	(b) 23-27.08N	068-23.75E																	
(c) 23-10.00N	068-35.15E	(d) 23-03.00N	068-45.00E																	
(e) 22-54.47N	068-45.00E	(f) 22-54.47N	068-23.75E																	
(g) 22-54.10N	068-07.83E	(h) 23-00.00N	068-10.00E																	
<p>061. India West Coast-Off Jafarabad. Charts 21 292 254 INT 71 INT 705. M/V Logos Searcher (IMO Number 7001883) sunk in position 20-41N 071-41E on 22 Jan 11 at 0505 UTC. 06 crews still reported missing.</p> <p>2. Mariners transiting through the area are requested to keep a sharp lookout and render assistance.</p>																				
<p>062. Self Cancelling. Western Indian Ocean. Charts INT 71 INT 72 INT 703. Piracy. M/V attacked/mothership operations in following positions:</p> <p>01-49N 056-35E at 221236Z Jan M/V attacked</p> <p>09-54N 052-56E at 220954Z Jan M/V Blida</p> <p>2. Vessels are advised to keep 100 miles clear of this position and to exercise extreme caution.</p>																				
<p>063. Cancel NAVAREA VIII message 054 of 2011. India East Coast- Off Visakhapatnam. Charts 31 32 354 INT 706. Experimental rocket launch scheduled between 0430 UTC and 0930 UTC from 02 to 04 Feb 2011. Danger zone bounded by following points:</p> <table border="0"> <tbody> <tr> <td>(a) 17-39.26N</td> <td>083-38.35E</td> <td>(b) 17-38.68N</td> <td>083-40.68E</td> </tr> <tr> <td>(c) 17-29.56N</td> <td>084-04.90E</td> <td>(d) 15-13.75N</td> <td>086-17.43E</td> </tr> <tr> <td>(e) 12-25.05N</td> <td>088-19.73E</td> <td>(f) 11-35.51N</td> <td>087-14.10E</td> </tr> <tr> <td>(g) 11-04.73N</td> <td>085-57.25E</td> <td>(h) 14-12.31N</td> <td>084-30.81E</td> </tr> <tr> <td>(j) 17-12.16N</td> <td>083-33.61E</td> <td>(k) 17-37.06N</td> <td>083-37.75E</td> </tr> </tbody> </table> <p>2. No over flight and shipping activity permissible within the above mentioned danger zone.</p> <p>3. Cancel this message on 05 Feb 2011.</p>	(a) 17-39.26N	083-38.35E	(b) 17-38.68N	083-40.68E	(c) 17-29.56N	084-04.90E	(d) 15-13.75N	086-17.43E	(e) 12-25.05N	088-19.73E	(f) 11-35.51N	087-14.10E	(g) 11-04.73N	085-57.25E	(h) 14-12.31N	084-30.81E	(j) 17-12.16N	083-33.61E	(k) 17-37.06N	083-37.75E
(a) 17-39.26N	083-38.35E	(b) 17-38.68N	083-40.68E																	
(c) 17-29.56N	084-04.90E	(d) 15-13.75N	086-17.43E																	
(e) 12-25.05N	088-19.73E	(f) 11-35.51N	087-14.10E																	
(g) 11-04.73N	085-57.25E	(h) 14-12.31N	084-30.81E																	
(j) 17-12.16N	083-33.61E	(k) 17-37.06N	083-37.75E																	

<p>064. India East Coast - Gopalpur. Charts 31 352 353 3005 INT 706. Firing exercise between 2330 UTC to 1800 UTC from 31 Jan to 08 Feb and 09 to 12 Feb 2011. Danger area bounded by:</p> <p>(a) 19-14.60N 084-53.70E (b) 19-37.05N 085-27.86E (c) 18-46.05N 085-22.87E and arc of 41 NM radius joining point (b) and (c).</p> <p>2. Safe flying height 6100 metres. 3. Mariners to exercise caution. 4. Cancel this message on 13 Feb 2011.</p>						
<p>065. Refer NAVAREA VIII message 008 of 2011. India East Coast-Bay of Bengal. Charts 31 353 355 INT 71 INT 706. Following rigs moved to new positions:</p> <p>DISCOVERER INDIA 18-45.40N 085-49.20E ABAN II 16-25.26N 082-19.00E new deployed</p> <p>2. Wide berth requested.</p>						
<p>066. India West Coast - Kochi. Charts 22 32 220 259 260 2004 2029 2045 INT 706. Firing by Naval Coast Battery on following dates:</p> <table border="0"> <thead> <tr> <th>Date</th> <th>Time (UTC)</th> </tr> </thead> <tbody> <tr> <td>01, 08 Feb 2011</td> <td>0900 TO 1200</td> </tr> <tr> <td>04, 11 Feb 2011</td> <td>0900 TO 1200 AND 1230 TO 1430</td> </tr> </tbody> </table> <p>2. Danger area bounded by:</p> <p>(a) 09-57.50N 075-59.50E (b) 09-57.70N 076-14.20E (c) 09-44.00N 076-17.50E (d) 09-42.50N 076-09.50E</p> <p>3. Safe flying height 10000 metres. 4. Cancel this message on 12 Feb 2011.</p>	Date	Time (UTC)	01, 08 Feb 2011	0900 TO 1200	04, 11 Feb 2011	0900 TO 1200 AND 1230 TO 1430
Date	Time (UTC)					
01, 08 Feb 2011	0900 TO 1200					
04, 11 Feb 2011	0900 TO 1200 AND 1230 TO 1430					
<p>067. India West Coast – Mormugao. Chart 22 257 INT 705 INT 706. Firing practice by Naval Aircraft between 0230 UTC to 1230 UTC from 01 to 07 Feb 2011. Danger area bounded by:</p> <p>(a) 15-13.00N 073-57.00E (b) 15-13.00N 073-52.00E (c) 15-11.00N 073-52.00E (d) 15-11.00N 073-57.00E</p> <p>2. Safe flying height 3500 metres. 3. Mariners to exercise caution. 4. Cancel this message on 08 Feb 2011.</p>						
<p>068. India West Coast- Arabian Sea. Charts 21 22 292 INT 71 INT 705. Survey vessel Bos Angler will carry out seismic survey from 26 Jan to 15 Feb 2011 in area bounded by:</p> <p>(a) 18-36.04N 069-47.99E (b) 18-30.91N 069-53.62E (c) 18-49.80N 070-17.60E (d) 18-55.38N 070-12.54E</p> <p>2. The vessel will be towing 04 seismic streamers of length 6000 metres. Each trailing ends are attached to tail buoy with radar reflectors and flashing white light. 3. All vessels operating in the area to exercise caution and give wide berth of 01 NM either side, 02 NM ahead and 05 NM astern of the vessel. 4. Cancel this message on 16 Feb 2011.</p>						
<p>069. Indian Ocean Western Part and Arabian Sea. Charts INT 70 INT 71 INT 72 INT 73 INT 701 INT 703. Piracy activities in following positions:</p> <table border="0"> <tbody> <tr> <td>02-20S 053-31E 250445Z JAN</td> <td>Possible Mothership</td> </tr> <tr> <td>01-45S 051-00E 251700Z JAN</td> <td>M/V Beluga Nomination hijacked</td> </tr> <tr> <td>11-14N 062-50E 260630Z JAN</td> <td>Vessel attacked</td> </tr> </tbody> </table> <p>2. Vessels advised to keep 100 miles clear of this position and exercise extreme caution.</p>	02-20S 053-31E 250445Z JAN	Possible Mothership	01-45S 051-00E 251700Z JAN	M/V Beluga Nomination hijacked	11-14N 062-50E 260630Z JAN	Vessel attacked
02-20S 053-31E 250445Z JAN	Possible Mothership					
01-45S 051-00E 251700Z JAN	M/V Beluga Nomination hijacked					
11-14N 062-50E 260630Z JAN	Vessel attacked					
<p>070. Refer NAVAREA VIII message 008 of 2011. India East Coast- Bay of Bengal. Charts 32 356 357 INT 71 INT 706. Rig Discoverer Seven Seas moved to position 12-57.6N 080-49.9E.</p> <p>2. Wide berth requested.</p>						
<p>071. India East Coast- Bay of Bengal. Charts 32 INT 71 INT 706. Survey vessel Viking Vision will carry out 3 D seismic survey from 31 Jan to 15 Feb 2011 in area bounded by:</p> <p>(a) 12-15.38N 083-27.52E (b) 12-34.46N 083-28.03E (c) 12-34.54N 083-12.04E (d) 12-15.46N 083-11.54E</p> <p>2. The vessel will be towing 10 streamer cables of length 8100 metres. Each cable end is marked with yellow tail buoy and white flashing light. 3. All vessels operating in the area to exercise caution and give wide berth of 07 NM around the vessel. 4. Cancel this message on 16 Feb 2011.</p>						

<p>072. India East Coast- Visakhapatnam. Charts 31 32 308 354 3002 INT 706. Seaward firing practice by Naval Coast Battery from 1500 UTC to 1700 UTC on 02 and 17 Feb 2011. Danger area bounded by:</p> <table> <tr> <td>(a) 17-42N</td> <td>083-18E</td> <td>(b) 17-47N</td> <td>083-32E</td> </tr> <tr> <td>(c) 17-34N</td> <td>083-30E</td> <td>(d) 17-28N</td> <td>083-18E</td> </tr> </table> <p>2. Safe flying height 13000 metres. 3. Cancel this message on 18 Feb 2011.</p>	(a) 17-42N	083-18E	(b) 17-47N	083-32E	(c) 17-34N	083-30E	(d) 17-28N	083-18E												
(a) 17-42N	083-18E	(b) 17-47N	083-32E																	
(c) 17-34N	083-30E	(d) 17-28N	083-18E																	
<p>073. Cancel NAVAREA VIII message 070 of 2011. India South Coast-Gulf of Mannar. Charts 32 INT 71 INT 73 INT 706. Rig Discoverer Seven Seas moved to position 08-41.05N 079-03.85E. 2. Wide berth requested.</p>																				
<p>074. Cancel NAVAREA VIII message 063 of 2011. India East Coast- Off Visakhapatnam. Charts 31 32 354 INT 706. Experimental rocket launch scheduled between 0430 UTC and 0930 UTC from 05 to 07 Feb 2011. Danger zone bounded by following points:</p> <table> <tr> <td>(a) 17-39.26N</td> <td>083-38.35E</td> <td>(b) 17-38.68N</td> <td>083-40.68E</td> </tr> <tr> <td>(c) 17-29.56N</td> <td>084-04.90E</td> <td>(d) 15-13.75N</td> <td>086-17.43E</td> </tr> <tr> <td>(e) 12-25.05N</td> <td>088-19.73E</td> <td>(f) 11-35.51N</td> <td>087-14.10E</td> </tr> <tr> <td>(g) 11-04.73N</td> <td>085-57.25E</td> <td>(h) 14-12.31N</td> <td>084-30.81E</td> </tr> <tr> <td>(j) 17-12.16N</td> <td>083-33.61E</td> <td>(k) 17-37.06N</td> <td>083-37.75E</td> </tr> </table> <p>2. No over flight and shipping activity permissible within the above mentioned danger zone. 3. Cancel this message on 08 Feb 2011.</p>	(a) 17-39.26N	083-38.35E	(b) 17-38.68N	083-40.68E	(c) 17-29.56N	084-04.90E	(d) 15-13.75N	086-17.43E	(e) 12-25.05N	088-19.73E	(f) 11-35.51N	087-14.10E	(g) 11-04.73N	085-57.25E	(h) 14-12.31N	084-30.81E	(j) 17-12.16N	083-33.61E	(k) 17-37.06N	083-37.75E
(a) 17-39.26N	083-38.35E	(b) 17-38.68N	083-40.68E																	
(c) 17-29.56N	084-04.90E	(d) 15-13.75N	086-17.43E																	
(e) 12-25.05N	088-19.73E	(f) 11-35.51N	087-14.10E																	
(g) 11-04.73N	085-57.25E	(h) 14-12.31N	084-30.81E																	
(j) 17-12.16N	083-33.61E	(k) 17-37.06N	083-37.75E																	
<p>075. Self Cancelling. India West Coast-Arabian Sea. Charts INT 71 INT 72 INT 73 INT 703. Piracy. Vessel attacked in 11-14N 063-28E at 280450Z JAN. 2. Vessels advised to keep 100 miles clear of this position and exercise extreme caution.</p>																				
<p>076. India West Coast-Okha. Charts 21 202 203 251 271 291 2013 2068 INT 705. Seaward firing practice by Naval Coast Battery on 04 Feb 2011 from 1030 UTC to 1230 UTC. 2. Danger area from 300 degree to 020 degree up to 12 NM seaward from 22-28.11N 069-04.00E . 3. Safe flying height 13000 metres. 4. Cancel this message on 05 Feb 2011.</p>																				
<p>077. Self cancelling. NAVAREA VIII-warning inforce: 2010 Series- 380 470 508 520 528 534 581 629 630 648 675 746 747 761 771 776 779 804 817 2011 Series- 008 010 017 021 025 026 029 030 040 042 043 044 045 047 048 050 051 052 055 057 058 060 061 064 065 066 067 068 069 071 072 073 074 075 076</p>																				
<p>078. India West Coast-Karwar. Charts 22 293 2008 2010 INT 705. Port hand channel marking buoy unlit in position 14-45.46N 074-07.37E. 2. Mariners to exercise caution.</p>																				
<p>079. India West Coast-Arabian Sea. Charts 22 INT 71 INT 705 INT 706. FV Prantalaya sunk in position 09-27.16N 072-16.08E on 29 Jan 2011 at 0245 UTC. 2. Mariners transiting through the area to keep sharp lookout for survivors and exercise caution.</p>																				
<p>080. Self Cancelling. Cancel NAVAREA VIII message 069 of 2011. India West Coast-Arabian Sea. Charts INT 71 INT 72 INT 73 INT 703. Piracy activities in following positions:</p> <table> <tr> <td>14-49N 064-43E</td> <td>300647Z Jan</td> <td>Pirate Action Group</td> </tr> <tr> <td>09-21N 062-47E</td> <td>300909Z Jan</td> <td>Pirate Action Group</td> </tr> <tr> <td>04-20N 066-20E</td> <td>301640Z Jan</td> <td>M/V attacked</td> </tr> </table> <p>2. Vessels advised to keep 100 miles clear of this position and exercise extreme caution.</p>	14-49N 064-43E	300647Z Jan	Pirate Action Group	09-21N 062-47E	300909Z Jan	Pirate Action Group	04-20N 066-20E	301640Z Jan	M/V attacked											
14-49N 064-43E	300647Z Jan	Pirate Action Group																		
09-21N 062-47E	300909Z Jan	Pirate Action Group																		
04-20N 066-20E	301640Z Jan	M/V attacked																		
<p>081. Cancel NAVAREA VIII message 061 of 2011. India West Coast-Off Jafarabad. Charts 21 292 254 INT 71 INT 705. Wreck of M/V Logos Searcher located in position 20-38.02N 071-39.12E. 2. Mariners to exercise caution.</p>																				
<p>082. Cancel NAVAREA VIII message 074 of 2011. India East Coast- Off Visakhapatnam. Charts 31 32 354 INT 706. Experimental rocket launch scheduled between 0430 UTC and 0930 UTC from 07 Feb to 09 Feb 2011. Danger zone bounded by following points:</p> <table> <tr> <td>(a) 17-39.26N</td> <td>083-38.35E</td> <td>(b) 17-38.68N</td> <td>083-40.68E</td> </tr> <tr> <td>(c) 17-29.56N</td> <td>084-04.90E</td> <td>(d) 15-13.75N</td> <td>086-17.43E</td> </tr> <tr> <td>(e) 12-25.05N</td> <td>088-19.73E</td> <td>(f) 11-35.51N</td> <td>087-14.10E</td> </tr> <tr> <td>(g) 11-04.73N</td> <td>085-57.25E</td> <td>(h) 14-12.31N</td> <td>084-30.81E</td> </tr> <tr> <td>(j) 17-12.16N</td> <td>083-33.61E</td> <td>(k) 17-37.06N</td> <td>083-37.75E</td> </tr> </table> <p>2. No over flight and shipping activity permissible within the above mentioned danger zone. 3. Cancel this message on 10 Feb 2011.</p>	(a) 17-39.26N	083-38.35E	(b) 17-38.68N	083-40.68E	(c) 17-29.56N	084-04.90E	(d) 15-13.75N	086-17.43E	(e) 12-25.05N	088-19.73E	(f) 11-35.51N	087-14.10E	(g) 11-04.73N	085-57.25E	(h) 14-12.31N	084-30.81E	(j) 17-12.16N	083-33.61E	(k) 17-37.06N	083-37.75E
(a) 17-39.26N	083-38.35E	(b) 17-38.68N	083-40.68E																	
(c) 17-29.56N	084-04.90E	(d) 15-13.75N	086-17.43E																	
(e) 12-25.05N	088-19.73E	(f) 11-35.51N	087-14.10E																	
(g) 11-04.73N	085-57.25E	(h) 14-12.31N	084-30.81E																	
(j) 17-12.16N	083-33.61E	(k) 17-37.06N	083-37.75E																	

083. India East Coast- Bay of Bengal. Charts 31 INT 71 INT 706. Survey vessel Viking II will carry out 3 D seismic survey from 01 to 05 Feb 2011 in area bounded by:

- | | | | |
|------------|---------|------------|---------|
| (a) 15-25N | 085-25E | (b) 15-55N | 085-25E |
| (c) 15-55N | 085-08E | (d) 15-25N | 085-08E |

2. The vessel will be towing 10 marine seismic cables of length 8100 metres. Each end of the cable is marked with yellow coloured tail buoy with flashing light.

3. All vessels operating in area to exercise caution and give wide berth at least 06 nm around the vessel.

4. Cancel this message on 06 Feb 2011.

084. India West Coast – Lakshadweep Sea. Charts 22 268 INT 702 INT 706. Seismic survey is in progress by survey vessel Geowave Commander till 27 Feb 2011 in area bounded by:

- | | | | |
|---------------|------------|---------------|------------|
| (a) 09-00.00N | 074-00.00E | (b) 10-00.00N | 074-00.00E |
| (c) 10-00.00N | 072-25.00E | (d) 09-00.00N | 072-25.00E |

2. The vessel will be towing six streamers cables of length 8500 metres. Each trailing end attached to yellow coloured tail buoy with white flashing lights.

3. All vessels operating in vicinity to give a wide berth of 05 NM around the vessel and exercise caution.

4. Cancel this message on 28 Feb 2011.



SECTION – VI

CORRECTIONS TO SAILING DIRECTIONS (PILOTS)

(Note: For hard copy in colour, kindly download from www.hydrobharat.nic.in Indian Notices to Mariners section)

Bay of Bengal Pilot (INP-2)

Chapter -2 (Page – 98-99)

{Source: INS Darshak ROS I(N)-111 and INS Sandhyak
ROS I (O)-126}

Article 2.5, para 5, line 1

Delete text “(10°45'.9N, 79°51'.1E)” and replace by
“(10°45'.95N, 79°51'.01E)”

Article 2.6, para 1, line 4-6

Delete text

“A small jetty at the river mouth is used to secure fishing boats and shallow draft barges.”

Article 2.7, para 2, line 3

Delete text “fertilizers and food grains”

And replace by

“palm oil, copracake etc”.

Article 2.8, para 2

Line 3, Delete text “Vellanganni” and replace by
“Vailankanni”

Article 2.8, para 2

Delete line 5-6

Article 2.8

Delete para 3

Article 2.8

Delete para 4 and replace by

3 “ A Signal Station lies about 2 cables SW of Nagapattinam lighthouse close to the flagstaff. The following are the positions of conspicuous objects.”

Sl No	Conspicuous Object	Position
(a)	Nagapattinam Light House	10°45'.95N 79°51'.01E
(b)	Water Tank, Kichchankuppam	10°42'.20N 79°50'.97E
(c)	Customs Quarters(Grey) Water Tank, Nagapattinam	10°45'.41N 79°50'.88E
(d)	Hussain Zuma Masjid, Nagore	10°46'.05N 79°50'.75E
(e)	Salamanan Water Tank, Nagapattinam	10°45'.94N 79°50'.91E
(g)	Municipal Water Tank, Nagapattinam	10°46'.46N 79°50'.54E
(h)	Police Telecommunications Tower, Nagapattinam	10°46'.42N 79°50'.44E
(j)	Nagore Aandagai Dargah Minaret	10°49'.11N 79°50'.46E

Insert photo after article 2.8



Photo Courtesy INS Sandhayak

Vailankanni Church

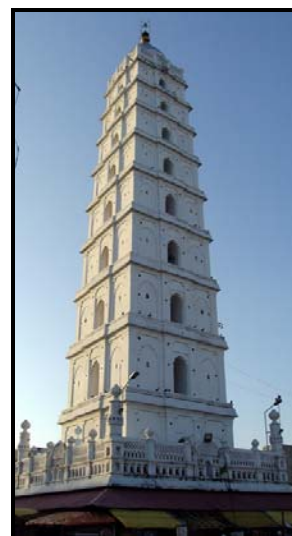


Photo Courtesy INS Sandhayak

Nagore Aandagai Dargah Minaret

Delete article 2.9 and replace by

Bar

2.9

“The bar at the entrance of the Kaduvaiyar river has a least depth of 1.5m over it. A Rubble Mound Breakwater is constructed at the north and south sides to maintain the depth of the sand bar. The sea breaks over the bar in almost all weathers and it can be dangerous for ships unless carefully handled. It is not advisable to cross the Bar after dark. The channel leading to the wharf about half a cable south of the entrance is dredged to 3m.”

Article 2.12, para 2, line 5

Insert text after “wharves.”

“The depths alongside these wharves are of the order of 1.3-1.8m.”

Article 2.12

Delete para 4

*Article 2.12**Delete para 6 and replace by*

6 “Limited repair facility for boats available.”

*Article 2.12, para 7**Insert text after line 6*

“Custom office and post office are situated in the Port.”

Page – 131**(Source: INS Sandhayak ROS J-183)***Article 2.159**Insert new para after para 5*

6 “The following conspicuous objects are visible from a distance of 3NM on the Rama Krishna Beach.

Sl No	Conspicuous Objects	Position
(a)	NCB Water Tower	17°42'.21N 83°18'.54E
(b)	Lamp Post	17°42'.87N 83°19'.66E
(c)	FM Tower	17°43'.05N 83°19'.20E



Photo Courtesy INS Sandhayak

FM Tower**Chapter -3 (Page – 150-151)****(Source: INS Sandhayak ROS L-77)***Article 3.48, para 1**Insert text after line 13*

“The Burhabalang River is prone to floods during monsoons. During monsoon the river changes its course at the entrance. The mouth of the river is constantly eroding. Local knowledge is mandatory for navigating in to the river. There are also shifting sand banks at the mouth of the river. The size and shape of the sandbank change after monsoon.

*Article 3.48**Insert new para after para 4*

5 “A conspicuous Fisheries Radio Tower stands in position 21°28'.10N, 84°03'.43E”



Photo Courtesy INS Sandhayak

Disused East Point Light House

Photo Courtesy INS Sandhayak

NCB Water Tower

Photo Courtesy INS Sandhayak

Anchored Fishing Boat at the Ferry Jetty

Chapter -8 (Page – 278)

{Source: INS Darshak ROS M(N)-179}

Article 8.19

Insert photo after para 2

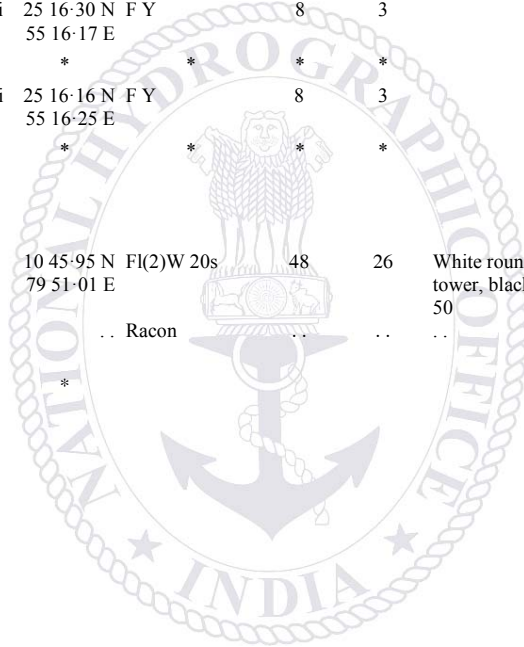


Photo Courtesy INS Darshak

Sugarloaf Rock

SECTION – VII
CORRECTIONS TO LIST OF LIGHTS

No	Name & Location	Position (Lat-Long)	Characteristics	Ht. mts	Range miles	Structure & Height (mts)	Remarks
D7355-6	- Mīnā' Rashid. Dubai Maritime City. E Wall	25 16-46 N 55 16-04 E	Q W	5	5	Red ◻ on yellow △ daymark 5	
	*	*					
D7355-7	- Mīnā' Rashid. Dubai Maritime City. E Wall	25 16-91 N 55 15-98 E	Fl G 5s	13	5	White round structure, black bands	*
	*	*					
D7355-71	- Mīnā' Rashid. Dubai Maritime City. E Wall	25 16-77 N 55 15-97 E	F Y	8	3		*
	*	*	*	*	*	*	*
D7355-72	- Mīnā' Rashid. Dubai Maritime City. E Wall	25 16-50 N 55 16-01 E	F Y	8	3		*
	*	*	*	*	*	*	*
D7355-73	- Mīnā' Rashid. Dubai Maritime City. E Wall	25 16-30 N 55 16-17 E	F Y	8	3		*
	*	*	*	*	*	*	*
D7355-74	- Mīnā' Rashid. Dubai Maritime City. E Wall	25 16-16 N 55 16-25 E	F Y	8	3		*
	*	*	*	*	*	*	*
D7701	Remove from list						
F0914	Nagapattinam E end	10 45-95 N 79 51-01 E	Fl(2)W 20s	48	26	White round masonry tower, black bands 50	<i>fl 0.5, ec 2, fl 0.5, ec 17.</i> RC
--			.. Racon		..		ILRS Vol 2 Station 79120 TR 2009



SECTION – VIII
CORRECTION TO LIST OF RADIO SIGNALS

INP 31(1), 2005

(Last correction: Edition No. 07 dated 01 Apr 2009)

NIL

INP 31(2), 2007

(Last correction: Edition No. 24 dated 16 Dec 10)

NIL

INP 31(5), 1997

(Last correction: Edition No. 07 dated 01 Apr 09)

NIL

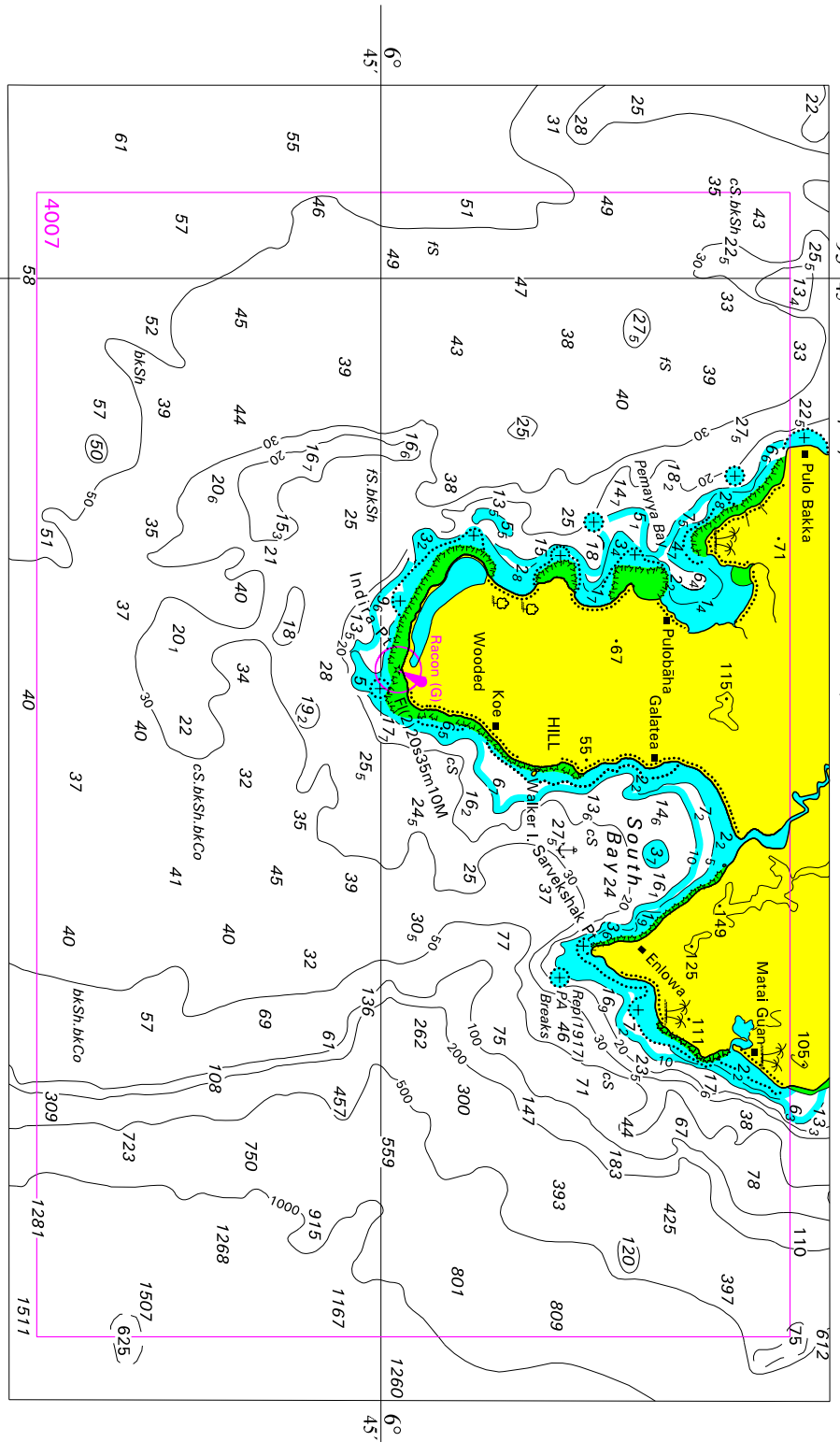
INP 31(6), 2005

(Last correction: Edition No. 02 dated 16 Jan 11)

NIL



93° 45' To accompany Notices to Mariners No. 056 /2011



Black correction for chart No. 409

93° 45'

1260 6° 45'

SECTION – IX **REPORTING OF NAVIGATIONAL DANGERS**

Appeal to all Mariners

1. Mariners at sea whilst on passage, or whilst entering / leaving ports / harbours and other waterways, are requested to look out for new or suspected dangers to navigation, changes in aids to navigation, or corrections to published charts and Sailing Directions. Whenever any such changes / dangers are observed, mariners are requested to notify the same to the Chief Hydrographer to the Government of India at the following address: -

National Hydrographic Office
107-A, Rajpur Road,
Dehradun - 248001
(UTTARAKHAND), INDIA
e-mail: - inho-navy@nic.in, msis-inho-navy@nic.in
Fax No.: +91-135- 2748373
WEB: www.hydrobharat.nic.in

Instructions for filling up IH 102

2. Kindly follow the instructions below in order to help the Hydrographic Office (the recipient) to quickly issue NAVAREA warning / Notice to Mariners for the benefit of all other mariners at sea.

Position Reporting

3. When a position is defined by bearings (true or magnetic to be specified) more than two bearings should be used in order to provide a check. Distances observed by Radar should be corrected for index errors. Latitude and Longitude obtained from GPS / DGPS should specify the datum (WGS 84 or other). A copy / tracing from the largest scale chart may be used for forwarding details, with the corrections and additions being shown thereon in red.

Depth Reporting

4. When soundings are obtained using Echo Sounders, the echo-gram should be duly annotated with date, time, position and depth, etc., before enclosing it with the Form IH 102. It is important to state whether echo sounder is set to register depths below the surface or below the keel; in the latter case the vessel's draught should be given. Time and date should be given in order that corrections for the height of the tide may be applied where necessary. The make, name and type of echo sounder should also be given. Care should be taken to set the echo sounder to the largest scale / phase, so as to obtain maximum details of echo of the feature. Efforts should be made to identify and negate false echoes if any.

5. Reports, which cannot be confirmed or are lacking in certain details should not be withheld. Limitations or shortcomings should be duly notified in the form.

6. Reports on shoal soundings, uncharted dangers and navigational aids out of order should be reported through fastest available means at the mariner's discretion, and also be made by radio to the nearest coast radio station. The draught of modern tankers is such that any uncharted depth under 50 metres should be of sufficient importance to justify a radio message.

7. Port information should be forwarded on form IH 102a together with IH 102. Form 102a contains the information required for Sailing Direction and should be used as an *aide memoir*. Where there is insufficient space on the form, additional sheet should be used.

Please Note: - The receipt of all Hydrographic Notes will be duly acknowledged by the Hydrographic Office. Normally, the sender's ship or name is quoted as the source when the Notices to Mariners reporting the change is issued, unless the information is received through a foreign Notices to Mariners. Further communication from the Hydrographic Office to the sender of the hydrographic note will only be necessary to verify unusual features or abnormal values reported.

I.H. 102**HYDROGRAPHIC NOTE****(For Reporting Navigational Dangers/ Changes observed at Sea by Mariners)**

1. Name of ship or sender	
2. Address of sender	
(i) E-mail	
(ii) Fax No.	
(iii) Tel. No.	
3. General Locality	
4. Chart / Publication Affected:	
(i) Chart published by INHO / UKHO / other (Specify).	
(ii) Chart No.	
(iii) Edition Date.	
(iv) Latest Edition of Indian N to M held	
5. Details of Changes / Dangers Observed.	
Object of Change.	
(i) Date/Time of observation	
(ii) Charted Observed	
(iii) Position/Area	
(a) Bathymetry:	
(i) Depth	
(ii) Depth Contour	
(iii) Channel Depth	
(b) Navigational Dangers:	
(i) New Shoals	
(ii) New Rocks	
(iii) New Reefs	
(iv) New Wrecks	
(v) New Nav-aid (Specify)	
(c) Casualties to existing Nav-Aids:	
(i) Buoys	
(ii) Lights	
(iii) Fog signals	
(iv) Racons	
(v) Transit Marks	
(vi) Leading Lines	
(vii) Clearance bearings	
(d) Designated Areas:	
(i) Exercise Areas	
(ii) Prohibited Areas	
(iii) Pilot Station	
(iv) Anchorage	
(v) Foul Ground	

(e) Port Information:	
(i) Berthing	
(ii) Cranage	
(iii) Tugs	
(iv) Dry Docks	
(v) Repair Facilities	
(vi) Pilotage	
(vii) Fuel	
(viii) Water	
(ix) Any other (Specify)	
(f) Environmental Data	
(i) Met information	
(ii) Tides and Tidal Stream	
(iii) Pollutants	
(iv) Effluents	
(v) Marine Life / Habitats	
(g) Other changes, if any, with Details:	
6. Information on the Positions of Danger / Changes Reported above:	
(a) Positioning System used	
(b) Datum [WGS/Everest/ Local (Specify)]	
(c) Accompanying plots / photographs if any	
7. Information on the Soundings / Depths Reported above:	
(a) Echo Sounder (Type) used	
(b) Draught of Vessel set on Echo Sounder	
(c) Observed water depth vis-à-vis charted depth	
(d) Echo-gram accompanying this report: Yes / No	
(e) Whether voltage drop existed in equipment at observation time	
(f) Data and Time of depth observation	
8. Limitations if any in Reporting the changes above	

Filled By
(Name & Designation)

Checked by
(Name & Designation)

Place
Date

I.H. 102a**HYDROGRAPHIC NOTE FOR PORT INFORMATION****(For Reporting Changes to Port Information)**

1 Name and Address of the Port.	
(a) Name	
(b) Address	
(c) Phone No's	
(d) Web Site	
(e) E Mail	
2 General Remarks	
(a) Principal activities and trade	
(b) Number of ships and tonnage handled per year	
(c) Maximum size of draught of vessel handled	
(d) Soft copy of port handbook	
3 Anchorages	
(a) Type/Purpose	
(b) Minimum depth	
(c) Shelter afforded	
(d) Holding Ground	
(e) Recommended Pilotage to the anchorages	
(f) Request Pilots appreciation to the approach of anchorage area	
4 Pilotage	
(a) Authority for request	
(b) Embarkation Position	
(c) Regulations	
(d) Documents to be provided	
(e) Request Pilots appreciation to the approach of inner harbour and berths.	
(f) Information on Vessel Traffic Management System (VTMS).	
(g) Navigational aid	
(i) List of beacons	
(ii) Buoys	
(iii) Lighthouses	
(iv) Any other information	
5 Directions	
(a) Entry and berthing information	
(b) Tides (Range of the tides)	
(c) Tidal stream information in the area	
(d) Type of season (max/min temperature, rain fall, wind speed and direction)	
6 Pollution Control	
Local regulation in force (if any)	

7 Tugs	
(a) Number available/Type	
(b) Maximum HP/Bollard Pull	
(c) Requesting authority	
(d) Availability times	
(e) Communication with tugs	
(f) Hiring charges	
8 Berthing and wharves	
(a) Type & number of berths available	
(b) Length	
(c) Depth alongside	
(d) Facilities available	
(e) Procedure for requesting berth and hiring charges.	
9 Cargo Handling	
(a) Containers	
(b) Lighters	
(c) Roll on / Roll off etc.	
10 Cranes	
(a) Brief details max lifting capacity, height of boom at warf level and outreach	
(b) Container handling facilities.	
11 Bridges	
Vertical clearance	
12 Repairs	
(a) Hull machinery and underwater	
(b) Ship and boat yards	
(c) Docking or slipway facilities (size or dimensions of vessels handled)	
(d) Hards and ramps	
(e) Divers/Diving Assistance	
13 Rescue and distress	
(a) Salvage, lifeboats, life guards etc	
14 Supplies	
(a) Fuel (type and quantities available)	
(b) Fresh water and rate of supply	
(c) Provisions	
(d) Chart agents	
15 Services	
(a) Radio/telegram/fax /telephone	
(b) Internet	
(c) Medical	
(d) Quarantine	
(e) counsel	
(f) Ship chandlery and stevedores	
(g) Compass adjustment	
(h) Tank cleaning	
(j) Hull painting	
(k) Police	

(l) Ambulance	
(m) Fire fighting (fixed and mobile facilities)	
(n) Navigational warning and weather bulletin	
(p) garbage disposal	
(q) Waste oil disposal	
(r) Helicopter landing facilities	
16 Communications	
(a) Road, rail and air services available	
(b) Nearest airport or airfield	
(c) Port radio and information service (Frequencies and operating hours)	
17 Port Authority	
Designation, address and phone number	
18 Security	
(a) Security of ports/ International Ship and Port Facility (ISPS) competence	
(b) Container Security Initiative (CSI)	
(c) Custom and Immigration regulation in ports	
19 Small craft facilities	
(a) Information and facilities for small craft yachts visiting the port	
(b) Yacht clubs, berths etc	
20 Shore leave	
21 Clubs recreation	
(a) information kiosk (location)	
(b) Foreign exchange firms/banks (within/near port area)	
(c) Places of interest near port	
(d) Hotels/ restaurants (Type of food served e.g Chinese, continental etc)	
22 Views (duly annotated), photographs of the approaches, leading marks, the entrance to the harbour etc.	
23 Any other information considered to be useful for the mariners	

Filled By
(Name & Designation)

Checked by
(Name & Designation)

Place
Date

To accompany Indian Notice to Mariners 062/11
Chart 8004

RESTRICTED AREAS
(25°36' N 55°13' E)
(26°10' N 55°43' E)

Only authorised vessels should enter the restricted areas shown on this chart. For further information, consult the local authority.

To accompany Indian Notice to Mariners 060/11
Chart 406

DUNCAN PASSAGE – PINNACLE ROCKS
Numerous pinnacle rocks exist in Duncan Passage.

To accompany Indian Notice to Mariners 060/11
Chart 405

DUNCAN PASSAGE – PINNACLE ROCKS
Numerous pinnacle rocks exist in Duncan Passage.

To accompany Indian Notice to Mariners 060/11
Chart 473

DUNCAN PASSAGE – PINNACLE ROCKS
Numerous pinnacle rocks exist in Duncan Passage.



FOR 24 X 7 SAR ASSISTANCE IN INDIAN SRR

Email: indsar@vsnl.net

NATION WIDE SAR TELE: 1554 (LAND LINE)

INMARSAT C (IOR) 441907210 CODE: 43 (TOLL FREE)

AFTN: VABBYXYC