



**BERNAT® DENIMSTYLE  
CROCHET GRANNY SQUARE  
THROW & PILLOW  
(TO CROCHET)**

**MEASUREMENT**

**Throw:** 45 x 63 ins [114.5 x 159.5 cm]

**Pillow:** 14 x 14 ins [35.5 x 35.5 cm]

**MATERIALS**

**Bernat® Denimstyle** (3.5 oz/100 g)  
**Throw (Pillow)**

**Main Color (MC):**

(White) **4 (1) ball(s)**

**Contrast A:** (Blue) **6 (1) ball(s)**

**Contrast B:** (Dark Blue) **5 (1) ball(s)**

Size 5 mm (U.S. H or 8) crochet hook  
**or size needed to obtain gauge.** 14 ins  
[35.5 cm] square pillow form.

**GAUGE**

**Small Motif** = 4½ ins [11.5 cm] square.

**Large Motif** = 9 ins [23 cm] square

**INSTRUCTIONS**

**Throw**

**Small Motif I** (make 32)

With A, ch 4. Join with sl st to form a ring.

**1st rnd:** Ch 3 (counts as dc). 2 dc in ring. (Ch 2. 3 dc) 3 times in ring. Ch 2. Join with sl st to top of ch 3. Fasten off.

**2nd rnd:** Join MC with sl st to any ch 2 sp. Ch 3 (counts as dc). (2 dc. Ch 2. 3 dc) in same sp as last sl st. \*Ch 1. (3 dc. Ch 2. 3 dc) in next ch 2 sp. Rep from \* twice more. Ch 1. Join with sl st to top of ch 3. Fasten off.

**3rd rnd:** Join B with sl st to any ch 2 sp. Ch 3 (counts as dc). (2 dc. Ch 2. 3 dc) in same sp as last sl st. Ch 1. 3 dc in next ch 1 sp. Ch 1. \*(3 dc. Ch 2. 3 dc) in next ch 2 sp. Ch 1. 3 dc in next ch 1 sp. Ch 1. Rep from \* twice more. Join with sl st to top of ch 3. Fasten off.

**4th rnd:** Join A with sl st to any ch 2 sp. Ch 3 (counts as dc). (2 dc. Ch 2. 3 dc) in same sp as last sl st. (Ch 1. 3 dc in next ch 1 sp) twice. \*Ch 1. (3 dc. Ch 2. 3 dc) in next ch 2 sp. (Ch 1. 3 dc in next ch 1 sp) twice. Rep from \* twice more. Ch 1. Join with sl st to top of ch 3. Fasten off.

**Small Motif II** (make 24)

Work as given for Motif I, substituting MC for A in 1st rnd, B for MC in 2nd rnd, A for B in 3rd rnd and MC for A in 4th rnd.

**Small Motif III** (make 12)

Work as given for Motif I, substituting B for A in 1st rnd, A for B in 3rd rnd, and B for A in 4th rnd.

Sew 4 small motifs tog to form large motif. There are 8 large Motifs I, 6 large Motifs II and 3 large Motifs III.

**Large Motif IV** (make 18)

With A, ch 4. Join with sl st to form a ring.

**1st rnd:** Work as given for 1st rnd of Small Motif I

**2nd rnd:** With B, work as given for 2nd rnd of Small Motif I.

**3rd rnd:** With MC, work as given for 3rd rnd of Small Motif I.

**4th rnd:** With A, work as given for 4th rnd of Small Motif I.

**5th rnd:** Join B with sl st to any ch 2 sp. Ch 3 (counts as dc). (2 dc. Ch 2. 3 dc) in same sp as last sl st. (Ch 1. 3 dc in next ch 1 sp) 3 times. \*Ch 1. (3 dc. Ch 2. 3 dc) in next ch 2 sp. (Ch 1. 3 dc in next ch 1 sp) 3 times. Rep from \* twice more. Ch 1. Join with sl st to top of ch 3. Fasten off.

**6th rnd:** Join MC with sl st to any ch 2 sp. Ch 3 (counts as dc). (2 dc. Ch 2. 3 dc) in same sp as last sl st. (Ch 1. 3 dc in next ch 1 sp) 4 times. \*Ch 1. (3 dc. Ch 2. 3 dc) in next ch 2 sp. (Ch 1. 3 dc in next ch 1 sp) 4 times. Rep from \* twice more. Ch 1. Join with sl st to top of ch 3. Fasten off.

**7th rnd:** Join A with sl st to any ch 2 sp. Ch 3 (counts as dc). (2 dc. Ch 2. 3 dc) in same sp as last sl st. (Ch 1. 3 dc in next ch 1 sp) 5 times. \*Ch 1. (3 dc. Ch 2. 3 dc) in next ch 2 sp. (Ch 1. 3 dc in next ch 1 sp) 5 times. Rep from \* twice more. Ch 1. Join with sl st to top of ch 3. Fasten off.

**8th rnd:** Join B with sl st to any ch 2 sp. Ch 3 (counts as dc). (2 dc. Ch 2. 3 dc) in same sp as last sl st. (Ch 1. 3 dc in next ch 1 sp) 6 times. \*Ch 1. (3 dc. Ch 2. 3 dc) in next ch 2 sp. (Ch 1. 3 dc in next ch 1 sp) 6 times. Rep from \* twice more. Ch 1. Join with sl st to top of ch 3. Fasten off.

## FINISHING

Join Large Motif I, II III and IV as shown on Diagram.

**Edging:** Join A with sl st to any corner ch 2 sp. Ch 1. 1 sc in same sp as last sl st. 1 sc in each dc around, working 3 sc in corners. Join with sl st to first sc. Fasten off.

**Tassel:** (make 4). Cut a piece of cardboard 4½ ins [11 cm] wide. Wind A around cardboard 30 times. Break yarn leaving a long end and thread end through a needle. Slip needle through all loops and tie tightly. Remove cardboard and wind yarn tightly around loops ¾ inch [2 cm] below fold. Fasten securely. Cut through rem loops and trim ends evenly. Sew tassels at each corner of Throw.

## Pillow

(Front and Back make alike)

Work 1st to 8th rnds as given for Large Motif IV.

**9th rnd:** Join MC with sl st to any corner. Ch 3 (counts as dc). (2 dc. Ch 2. 3 dc) in same corner. (Ch 1. 3 dc in next ch 1 sp) 7 times. \*Ch 1. (3 dc. Ch 2. 3 dc) in next ch 2 sp. (Ch 1. 3 dc in next ch 1 sp) 7 times. Rep from \* twice more. Ch 1. Join with sl st to top of ch 3. Fasten off.

**10th rnd:** Join A with sl st to any corner. Ch 3 (counts as dc). (2 dc. Ch 2. 3 dc) in same corner. (Ch 1. 3 dc in next ch 1 sp) 8 times. \*Ch 1. (3 dc. Ch 2. 3 dc) in next ch 2 sp. (Ch 1. 3 dc in next ch 1 sp) 8 times. Rep from \* twice more. Ch 1. Join with sl st to top of ch 3. Fasten off.

**11th rnd:** Join B with sl st to any corner. Ch 3 (counts as dc). (2 dc. Ch 2. 3 dc) in same corner. (Ch 1. 3 dc in next ch 1 sp) 9 times. \*Ch 1.

(3 dc. Ch 2. 3 dc) in next ch 2 sp. (Ch 1. 3 dc in next ch 1 sp) 9 times. Rep from \* twice more. Ch 1. Join with sl st to top of ch 3. Fasten off.

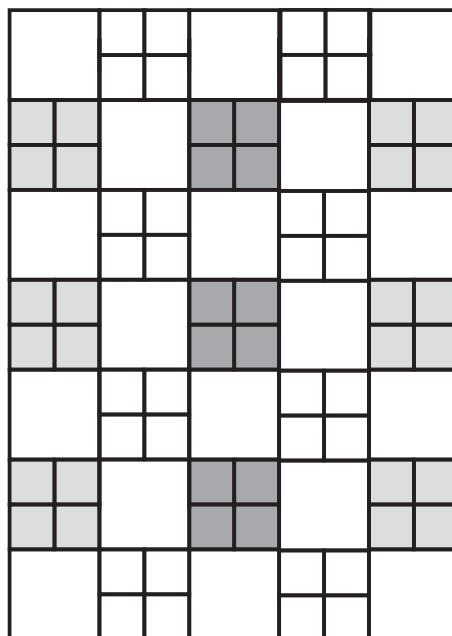
## FINISHING

Block each piece to 14 ins [35.5 cm] square.

With WS of Front and Back tog, working through both thicknesses, join A with sl st to any corner. Ch 1. 1 sc in same sp as last sl st. 1 sc in each dc along sides and corners. When 3 sides are completed, insert pillow form and crochet opening closed, as before. Join with sl st to first sc. Fasten off.

**Tassel:** (make 4). Work as given for Throw. Sew tassels at each corner of Pillow.

Diagram



## Key



Large Motif I



Large Motif II



Large Motif III



Large Motif IV



P.O. Box 40, Listowel ON N4W 3H3  
"home style... life style... your style."