

# Activities by Region

## North America

### Principal Operational Facilities in North America



#### Supervision of Operations

■ **MMNA (Head Office)**  
**Mitsubishi Motors North America, Inc.**

Location: Cypress, California  
 Capitalization: USD 398.8 million  
 Activities: Automobile importing, sales and manufacturing  
 MMC Voting Rights: 100.0%

■ **MMNA (Manufacturing)**  
**Mitsubishi Motors North America, Inc.**  
 Production Facility Location: Normal, Illinois

#### Sales Organization (Canada)

Sales Outlets: 84

Distributor

■ **Mitsubishi Motor Sales of Canada, Inc. (MMSCAN)**

Location: Mississauga, Ontario  
 Capitalization: USD 1.3 million  
 Activities: Automobile importing and sales  
 MMC Voting Rights: 100.0%

#### R&D Facility

■ **MRDA**  
**Mitsubishi Motors R&D of America, Inc.**

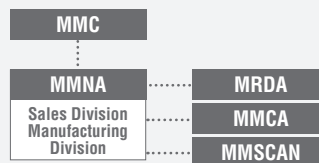
Location: Ann Arbor, Michigan  
 Capitalization: USD 2.0 million  
 Activities: Market research, product development, design, testing and certification  
 MMC Voting Rights: 100.0%

**Sales Organization** (United States)  
 Sales Outlets: 405

Sales Financing

■ **Mitsubishi Motors Credit of America, Inc. (MMCA)**

Location: Cypress, California  
 Capitalization: USD 260.0 million  
 Activities: Automobile financing and leasing  
 MMC Voting Rights: 100.0%



..... Consolidated Subsidiaries

(As of March 31, 2011)

■ MMC and Consolidated Subsidiaries

## Production Volume by Model

(Unit: Vehicles)

Production Facility / Assembler	Model	2006	2007	2008	2009	2010
■ MMNA (Illinois, U.S.A.)	Galant .....	35,541	37,729	27,747	15,017	<b>19,229</b>
	Eclipse / Eclipse Spyder .....	39,602	24,333	13,814	2,278	<b>7,173</b>
	Endeavor .....	18,097	13,465	2,316	5,401	<b>6,444</b>
<b>Total</b>		<b>93,240</b>	<b>75,527</b>	<b>43,877</b>	<b>22,696</b>	<b>32,846</b>

■ MMC and Consolidated Subsidiaries

## Sales Volume by Model

(Unit: Vehicles)

<b>U.S.A</b>		2006	2007	2008	2009	2010
Production Facility / Assembler	Model					
■ MMNA (Illinois, U.S.A.)	Galant .....	27,517	27,885	22,010	13,265	<b>15,163</b>
	Eclipse / Eclipse Spyder .....	35,763	25,569	15,338	4,955	<b>4,277</b>
	Endeavor .....	14,043	10,669	4,342	4,057	<b>4,433</b>
■ Japan	Lancer .....	23,650	32,132	26,341	19,592	<b>21,273</b>
	Outlander .....	14,988	20,531	12,624	10,718	<b>11,632</b>
	RVR (Outlander Sport) .....	—	—	—	—	<b>5,446</b>
	Pajero (Montero) .....	1,390	164	6	—	—
	Challenger (Montero Sport) .....	1	—	—	—	—
OEM Supplied by Chrysler	Raider .....	7,156	7,479	3,349	1,188	<b>3</b>
<b>Total</b>		<b>124,508</b>	<b>124,429</b>	<b>84,010</b>	<b>53,775</b>	<b>62,227</b>
<b>Total Market Volume</b>		<b>16,509,052</b>	<b>15,837,708</b>	<b>11,869,839</b>	<b>10,770,741</b>	<b>12,103,435</b>

■ MMC and Consolidated Subsidiaries  
MMAL: Mitsubishi Motors Australia, Ltd.

## Canada

	2006	2007	2008	2009	2010
<b>Total</b>	<b>11,801</b>	<b>17,790</b>	<b>18,874</b>	<b>20,062</b>	<b>19,558</b>
<b>Total Market Volume</b>	<b>1,618,806</b>	<b>1,678,207</b>	<b>1,556,747</b>	<b>1,503,263</b>	<b>1,563,230</b>

## Mexico

	2006	2007	2008	2009	2010
<b>Total</b>	<b>16,868</b>	<b>17,710</b>	<b>16,100</b>	<b>13,805</b>	<b>12,165</b>
<b>Total Market Volume</b>	<b>1,137,756</b>	<b>1,083,608</b>	<b>957,047</b>	<b>748,427</b>	<b>843,034</b>

	2006	2007	2008	2009	2010
<b>Total</b>	<b>164,223</b>	<b>171,892</b>	<b>118,984</b>	<b>87,642</b>	<b>93,950</b>
<b>Total Market Volume</b>	<b>19,377,322</b>	<b>18,701,102</b>	<b>14,383,633</b>	<b>13,022,431</b>	<b>14,509,699</b>

Note: Figures in FY2007 and preceding years include those of Puerto Rico, which is currently included in Central and South America, effective from FY2008.