



# Amsterdam Ports Statistics 2012

# Cargo throughput

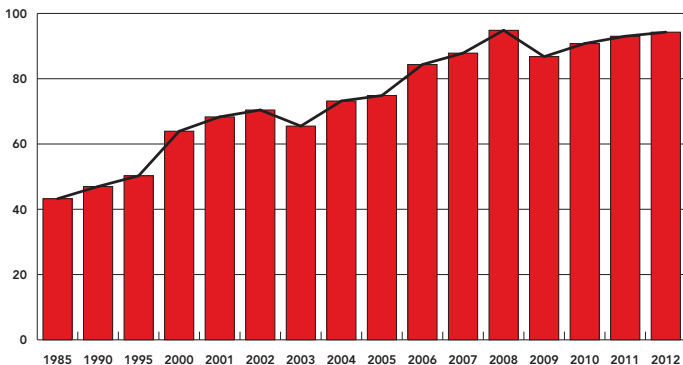
## Incoming and outgoing cargo by commodity in Amsterdam Ports 2011-2012

Year	2011			2012		
	IN	OUT	TOTAL	IN	OUT	TOTAL
<b>Total tonnage</b> in 1 000 tons	<b>65.781</b>	<b>27.237</b>	<b>93.018</b>	<b>64.783</b>	<b>29.485</b>	<b>94.268</b>
<b>Liquid Bulk</b>	<b>19.728</b>	<b>19.751</b>	<b>39.479</b>	<b>21.056</b>	<b>22.258</b>	<b>43.314</b>
of which: Crude Oil	13	22	35	10		10
Refined Products	17.917	19.209	37.126	19.311	21.724	41.035
Energy Gasses	90	12	102	140	34	174
Other Liquid Bulk	1.708	508	2.217	1.594	501	2.095
<b>Dry Bulk</b>	<b>42.753</b>	<b>3.825</b>	<b>46.578</b>	<b>38.132</b>	<b>3.761</b>	<b>41.893</b>
of which: Cereals	608	53	661	549	59	608
Cattle Feed	5.129	655	5.785	4.398	483	4.881
Oil Seeds	1085	615	1700	936	523	1.459
Coal	19.042	923	19.965	17.818	1.072	18.890
Ores	9.569	661	10.230	7.711	844	8.555
Fertilizers	802	285	1.087	837	282	1.118
Other Dry Bulk	6.518	632	7.150	5.884	498	6.382
<b>Total Bulk</b>	<b>62.480</b>	<b>23.577</b>	<b>86.057</b>	<b>59.188</b>	<b>26.019</b>	<b>85.207</b>
<b>General Cargo</b>	<b>3.300</b>	<b>3.660</b>	<b>6.961</b>	<b>5.595</b>	<b>3.465</b>	<b>9.061</b>
of which: Containers in mln. tons	345	261	606	590	226	816
Ro/Ro	689	250	938	444	199	644
Other General Cargo	2.267	3.149	5.416	4.561	3.040	7.601
Number of Containers in total (Total) TEU*	19.800	15.581	35.381	25.843	17.704	43.547
Number of Empty Containers (Empty) TEU	27.609	20.906	48.514	40.385	28.548	68.933
Number of Loaded Containers (Loaded) TEU	5.749	5.338	11.087	5.010	11.068	16.078
	9.370	7.866	17.236	8.426	19.914	28.339
	14.051	10.243	24.294	20.833	6.636	27.469
	18.239	13.040	31.278	31.959	8.635	40.594

\* TEU Twenty-feet Equivalent Units  
Unit: Gross weight x 1.000 metric tons

Source: AP

## Throughput Amsterdam Ports (in mln. tons), 1985-2012



Source: AP

For more statistics and detailed information visit [www.portofamsterdam.com](http://www.portofamsterdam.com)

# Cargo throughput

## Total throughput by commodity in Amsterdam Ports, 2011-2012

2011	Amsterdam	Beverwijk	IJmuiden	Zaanstad	Total
Agribulk	8.010	3		130	8.145
Ores and scrap	686	5	9.540		10.230
Coal	15.559		4.406		19.965
Mineral oil products	37.126				37.126
Other bulk	10.491	78	11	12	10.591
<b>Total Bulk</b>	<b>71.873</b>	<b>86</b>	<b>13.957</b>	<b>142</b>	<b>86.057</b>
Roll on/roll off	927		12		938
Containers, flats	605		1		606
Other general cargo, lash	1.455	237	3.688	35	5.416
<b>Total general cargo</b>	<b>2.987</b>	<b>237</b>	<b>3.701</b>	<b>35</b>	<b>6.961</b>
<b>Total throughput</b>	<b>74.860</b>	<b>323</b>	<b>17.658</b>	<b>177</b>	<b>93.018</b>
Number of loaded vessels	5.244	123	1.853	51	7.271

2012	Amsterdam	Beverwijk	IJmuiden	Zaanstad	Total
Agribulk	6.852			96	6.948
Ores and scrap	775	2	7.778		8.555
Coal	15.558		3.332		18.890
Mineral oil products	41.035		528		41.563
Other bulk	9.205	32		15	9.252
<b>Total Bulk</b>	<b>73.425</b>	<b>34</b>	<b>11.637</b>	<b>111</b>	<b>85.207</b>
Roll on/roll off	595		49		644
Containers, flats	816				816
Other general cargo, lash	2.222	205	5.166	8	7.601
<b>Total general cargo</b>	<b>3.633</b>	<b>205</b>	<b>5.215</b>	<b>8</b>	<b>9.061</b>
<b>Total throughput</b>	<b>77.058</b>	<b>239</b>	<b>16.852</b>	<b>119</b>	<b>94.268</b>
Number of loaded vessels	5.203	109	1.941	28	7.281

Unit: Gross weight x 1.000 metric tons

Source: AP

## Incoming and outgoing cargo by commodity in Amsterdam Ports, 2011-2012

2011	Amsterdam	Beverwijk	IJmuiden	Zaanstad	Total
In	50.606	220	14.784	172	65.781
Out	24.254	104	2.874	5	27.237
<b>Total</b>	<b>74.860</b>	<b>323</b>	<b>17.658</b>	<b>177</b>	<b>93.017</b>

2012	Amsterdam	Beverwijk	IJmuiden	Zaanstad	Total
In	50.471	150	14.044	117	64.783
Out	26.587	89	2.808	1	29.485
<b>Total</b>	<b>77.058</b>	<b>239</b>	<b>16.852</b>	<b>118</b>	<b>94.268</b>

Unit: Gross weight x 1.000 metric tons

Source: AP

## Throughput containers Port of Amsterdam, 1990-2012

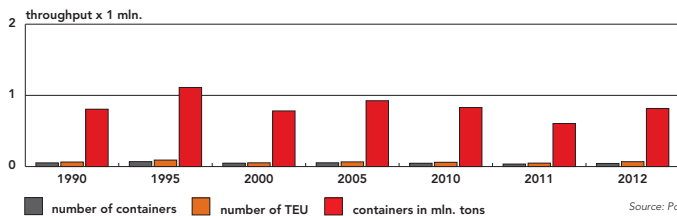
Period	1990	1995	2000	2005	2010	2011	2012
Number of Containers	52.279	69.732	47.681	53.469	46.590	35.381	43.547
Number of TEU	63.582	91.112	52.829	65.844	60.043	48.514	68.933
Containers in mln. tons	805.766	1.111.016	781.789	925.341	829.856	605.135	815.932
TEU / Containers	1,2	1,3	1,1	1,2	1,3	1,4	1,6
Ton / TEU	12,7	12,2	14,8	14,1	13,8	12,5	11,8

\*TEU = Twenty-foot Equivalent Units

Source: PoA

Unit: Gross weight x 1 metric ton.

## Containers in Port of Amsterdam, 1990-2012



Source: PoA

# Cargo throughput

## Total national and international traffic in Amsterdam Ports by mode of transport, 1995-2011

Incoming	1995	2000	2005	2006	2007	2008	2009	2010	2011
Barge	10.325	12.861	20.445	21.666	23.172	23.442	23.035	22.749	25.014
Rail	992	1.561	1.437	1.509	1.492	1.501	772	845	1.039
Road	21.334	24.493	23.696	24.972	26.047	23.852	25.666	28.239	25.474
<b>Total</b>	<b>32.651</b>	<b>38.915</b>	<b>45.578</b>	<b>48.147</b>	<b>50.711</b>	<b>48.795</b>	<b>48.332</b>	<b>51.833</b>	<b>51.527</b>

Outgoing	1995	2000	2005	2006	2007	2008	2009	2010	2011
Barge	21.618	34.458	35.690	37.816	39.381	37.528	33.948	39.706	37.615
Rail	1.245	2.427	3.373	3.979	2.963	3.012	2.359	3.002	3.281
Road	24.648	26.901	27.227	25.797	27.119	23.872	27.785	29.113	24.917
<b>Total</b>	<b>47.511</b>	<b>63.786</b>	<b>66.290</b>	<b>67.592</b>	<b>69.463</b>	<b>64.412</b>	<b>62.312</b>	<b>71.821</b>	<b>65.813</b>

Incoming+Outgoing	1995	2000	2005	2006	2007	2008	2009	2010	2011
Barge	31.943	47.319	56.135	59.482	62.553	60.970	56.983	62.455	62.629
Rail	2.237	3.988	4.810	5.488	4.455	4.513	3.131	3.847	4.320
Road	45.982	51.394	50.923	50.769	53.166	47.724	50.530	57.352	50.391
<b>Total</b>	<b>80.162</b>	<b>102.701</b>	<b>111.868</b>	<b>115.739</b>	<b>120.174</b>	<b>113.207</b>	<b>110.644</b>	<b>123.654</b>	<b>117.340</b>

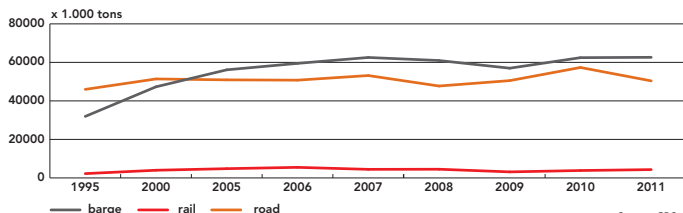
(Incoming of total) in %	1995	2000	2005	2006	2007	2008	2009	2010	2011
Barge	32	27	36	36	37	38	40	36	40
Rail	44	39	30	27	33	33	25	22	24
Road	46	48	47	49	49	50	51	49	51

(Outgoing of total) in %	1995	2000	2005	2006	2007	2008	2009	2010	2011
Barge	68	73	64	64	63	62	60	64	60
Rail	56	61	70	73	67	67	75	78	76
Road	54	52	53	51	51	50	55	51	49

Unit: Gross weight x 1.000 metric tons

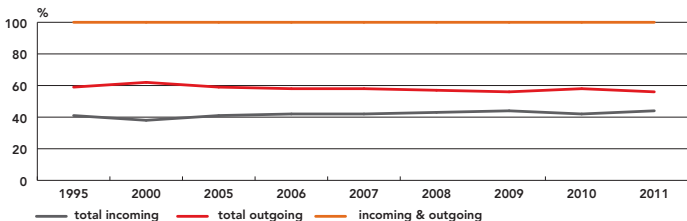
Source: CBS

## Hinterland by mode of transport in Amsterdam Ports, 1995-2011



Source: CBS

## Relation incoming/outgoing hinterland in %, 1995-2011



Source: CBS

# Cargo throughput

## Place of origin (cargo throughput, incoming traffic) Port of Amsterdam, 2012-2011

Country	Origin 2012	Origin 2011
1. United Kingdom	6.618.856	5.861.114
2. Colombia	6.033.133	5.670.406
3. Latvia	5.215.680	3.052.033
4. United States	5.110.039	5.695.354
5. Russia	3.993.058	4.046.168
6. Brazil	3.487.131	3.666.271
7. Norway	3.450.379	3.281.158
8. France	1.315.684	1.939.531
9. South Africa	1.313.823	855.986
10. Sweden	1.279.510	1.226.532
11. Spain	1.257.537	848.849
12. Netherlands	1.010.435	2.246.675
13. Indonesia	944.245	778.122
14. Finland	816.494	901.566
15. Israel	673.772	664.874
16. Poland	612.605	137.504
17. Germany	577.651	374.511
18. Argentina	544.450	641.509
19. India	515.897	348.351
20. Canada	492.344	712.072
21. Denmark	484.715	311.902
22. Belgium	367.357	255.308
23. Ukraine	271.017	57.455
24. Turkey	204.812	123.055
25. Trinidad & Tobago	202.413	34.486
26. Italy	201.868	126.071
27. Portugal	200.016	106.699
28. Estonia	194.788	147.156
29. Lithuania	172.047	244.810
30. China	171.290	424.805
Others	2.737.697	5.825.195
<b>Total</b>	<b>50.470.743</b>	<b>50.605.528</b>

Unit: Gross weight x 1 metric ton

Source: PoA

## Place of destination (cargo throughput, outgoing traffic) Port of Amsterdam, 2012-2011

Country	Destination 2012	Destination 2011
1. United States	3.203.838	2.338.730
2. Togo	2.713.738	464.505
3. United Kingdom	2.339.654	2.584.570
4. Mexico	1.819.200	1.136.371
5. Brazil	1.649.994	845.135
6. Nigeria	1.485.092	2.440.579
7. Ghana	1.457.333	464.511
8. China	785.583	311.260
9. Argentina	690.115	177.917
10. Guinea	605.033	443.225
11. Gibraltar (British)	572.667	958.072
12. France	478.598	660.589
13. Latvia	438.264	275.179
14. Cameroon	428.134	507.658
15. Germany	411.170	469.794
16. Puerto Rico (USA)	393.491	51.525
17. Canada	378.566	615.348
18. Egypt	366.671	672.554
19. Norway	331.915	447.993
20. Morocco	323.182	109.803
21. Turkey	320.070	434.243
22. Spain	319.690	621.212
23. Lebanon	308.274	64.961
24. Netherlands	299.693	430.885
25. South Africa	261.027	134.348
26. Senegal	259.021	465.070
27. Singapore	244.167	93.585
28. Denmark	227.331	277.192
29. Poland	214.412	213.205
30. Algeria	198.443	126.842
Others	3.062.605	3.439.188
<b>Total</b>	<b>26.586.971</b>	<b>24.254.245</b>

Unit: Gross weight x 1 metric ton

Source: PoA

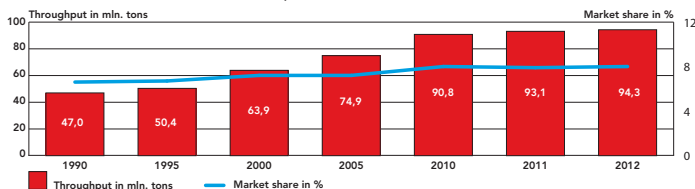
# Cargo throughput

Cargo throughput (in million tons) in the Hamburg - Le Havre range, 1990-2012

Ports	1990	1995	2000	2005	2010	2011	2012	Market share in percent (%)	
								2011	2012
Rotterdam	287,9	293,4	322,4	370,2	430,2	434,6	441,5	37,0	37,6
Antwerpen	102	108,1	130,5	160,1	178,2	187,2	184,1	15,9	15,7
Hamburg	61,4	72,1	85,1	125,7	121,2	132,2	130,9	11,2	11,1
<b>Zeehavens Amsterdam</b>	<b>47</b>	<b>50,3</b>	<b>63,9</b>	<b>74,9</b>	<b>90,8</b>	<b>93,1</b>	<b>94,3</b>	<b>7,9</b>	<b>8,0</b>
Bremen	30,2	31,2	45	54,3	68,7	80,6	84,0	6,9	7,1
Le Havre	54	53,8	68	74,9	70,2	67,6	63,5	5,8	5,4
Duinkerken	30,4	30,6	35,5	34,6	42,8	47,5	47,2	4,0	4,0
Zeebrugge	36,6	39,4	45,3	53,4	49,6	47,0	43,5	4,0	3,7
Zeeland Seaports	16	34,3	43,4	46	33,0	35,5	34,0	3,0	2,9
Gent	17,8	21,6	24,8	30,5	27,3	27,2	26,3	2,3	2,2
Wilhelmshaven	16,1	17,8	19,1	22	25,7	23,0	26,2	2,0	2,2
<b>Total</b>	<b>723,8</b>	<b>774,2</b>	<b>907,0</b>	<b>1.068,6</b>	<b>1.163,8</b>	<b>1.175,5</b>	<b>1.175,5</b>	<b>100</b>	<b>100</b>

Source: AP/ESPO

Market share Amsterdam North Sea Canal, 1990-2012



Seagoing traffic (x 1.000 tons) handled without passing (in front of) the Sea locks in Amsterdam Ports, 1995-2012

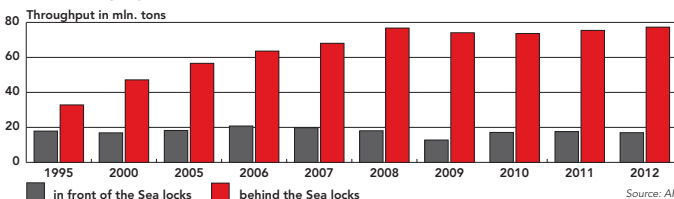
Period	1995	2000	2005	2006	2007	2008	2009	2010	2011	2012	2012-2011 in %
Dry bulk	14.294	13.414	15.214	15.540	15.790	15.298	10.371	14.545	13.956	11.638	-17
o.w.Coal	4.339	4.172	4.756	7.274	7.414	4.928	3.472	4.568	4.406	3.332	-24
General Cargo	3.503	3.311	2.884	4.692	3.870	2.583	2.294	2.568	3.631	2.062	-43
<b>Total</b>	<b>17.880</b>	<b>16.881</b>	<b>18.244</b>	<b>20.770</b>	<b>19.784</b>	<b>18.066</b>	<b>12.773</b>	<b>17.113</b>	<b>17.587</b>	<b>16.977</b>	<b>-3</b>

Seagoing traffic (x 1.000 tons) passed through (behind) the Sea locks in Amsterdam Ports, 1995-2011

Period	1995	2000	2005	2006	2007	2008	2009	2010	2011	2012	2012-2011 in %
Liquid bulk	9.671	13.639	20.751	25.358	26.525	33.658	38.142	37.408	39.424	43.313	10
o.w. Oil products	8.128	11.521	19.274	23.502	24.868	30.619	35.252	34.651	37.082	41.035	11
Dry bulk	19.458	30.004	31.952	30.141	32.778	35.491	31.110	32.166	32.517	30.255	-7
o.w. agribulk	8.916	10.147	8.347	8.086	8.347	8.739	7.958	8.951	8.052	6.852	-15
Coal	4.330	13.319	14.311	14.690	17.272	17.291	14.656	14.199	15.559	15.557	0
Ores/scrap	1.663	495	1.077	912	948	810	739	520	690	776	12
Containers	1.111	782	922	3257	3442	3.903	1.868	830	605	816	35
Vessels	340	310	171	214	287	524	269	318	396	242	-39
Total General cargo	1.767	2.435	2.820	5.732	6.213	7.621	4.849	4.095	3.490	4.172	20
<b>Total</b>	<b>32.848</b>	<b>47.171</b>	<b>56.616</b>	<b>63.606</b>	<b>68.056</b>	<b>76.769</b>	<b>74.101</b>	<b>73.669</b>	<b>75.431</b>	<b>77.291</b>	<b>2</b>

The Ports behind the Sea locks are: Amsterdam, Beverwijk, Velsen and Zaanstad.

Sea locks and seagoing traffic, 1995-2012



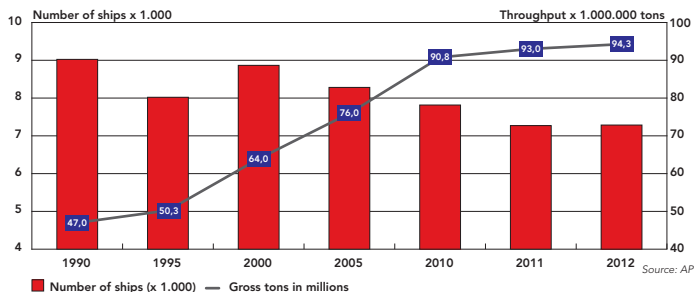
Source: AP

## Arrivals of seagoing (loaded) vessels in Amsterdam Ports, classified by tonnage, 1990-2012

Tonnage-classes in b.t.	1990	1995	2000	2005	2006	2007	2008	2009	2010	2011	2012
0 - 1.500	4.953	3.346	2.495	2.056	1.496	1.347	1.312	899	1.162	1.254	1.252
1.500 - 3.000	1.453	1.928	2.622	2.567	2.388	2.445	2.551	1.871	2.408	1.880	1.739
3.000 - 6.000	677	940	1.114	1.030	1.278	1.296	1.378	1.259	1.098	1.153	1.121
6.000 - 10.000	485	324	570	547	795	837	1.022	890	909	800	838
10.000 - 20.000	695	564	997	468	771	798	887	858	697	632	644
20.000 - 30.000	343	386	347	683	649	552	706	812	613	586	714
30.000 - 40.000	188	206	286	447	293	374	402	344	287	270	327
40.000 - 50.000	79	101	104	116	162	226	260	259	247	278	260
50.000 - 70.000	95	143	138	203	314	276	202	180	198	210	206
70.000 - 90.000	50	75	180	133	265	307	249	220	108	102	65
90.000 - 110.000	6	5	13	32	39	45	41	69	89	106	119
110.000 - 150.000		3			8	10	6				1
<b>Total</b>	<b>9.024</b>	<b>8.021</b>	<b>8.866</b>	<b>8.282</b>	<b>8.458</b>	<b>8.513</b>	<b>9.016</b>	<b>7.661</b>	<b>7.816</b>	<b>7.271</b>	<b>7.286</b>

Source: AP

## Development of cargo throughput and number of ships in Amsterdam Ports, 1990-2012

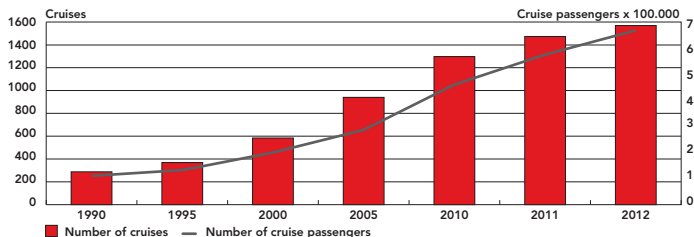


## Cruises in Amsterdam Ports, 1990-2012

Year	Sea Cruises	Sea cruise passengers	Sea and river cruises in the Port of Amsterdam				Total cruise	Total cruise passengers
			Ships	Passengers	River cruises	River cruise passengers		
1990	61	86.788	56	32.732	227	27.178	32.732	113.966
1995	110	102.908	89	89.944	259	33.443	89.944	136.351
2000	114	142.781	104	100.624	470	61.817	100.624	204.598
2005	100	125.714	88	122.105	840	166.320	122.105	292.034
2010	102	202.655	91	198.530	1.195	264.540	198.530	467.195
2011	146	288.481	123	274.149	1.327	294.589	274.149	583.070
<b>2012</b>	<b>187</b>	<b>355.274</b>	<b>144</b>	<b>289.757</b>	<b>1.382</b>	<b>321.782</b>	<b>1.569</b>	<b>677.056</b>

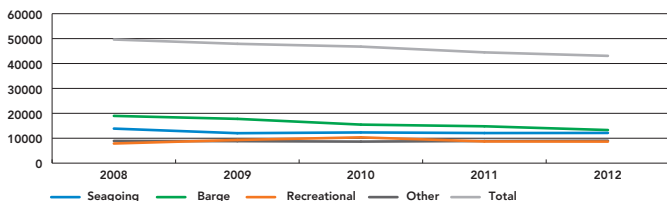
Source: AP/PTA/ACP

## Number of cruises and cruise passengers in Amsterdam Ports, 1990-2012

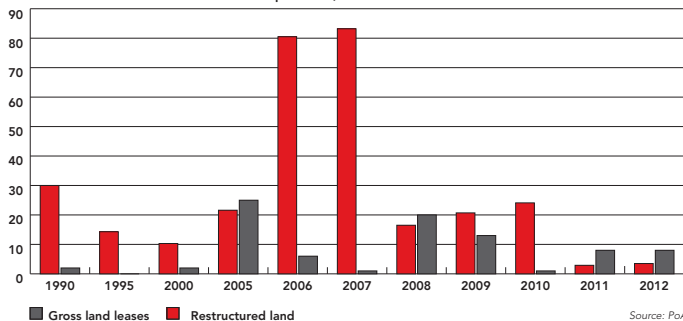


## Sealock movements per vessel category - all sealocks

Vessel category	2008	2009	2010	2011	2012
Seagoing	13.865	12.020	12.323	12.077	12.128
Barge	18.966	17.770	15.469	14.793	13.286
Recreational	7.879	9.301	10.346	8.716	8.644
Other	8.927	8.817	8.647	8.885	9.013
<b>Total</b>	<b>49.637</b>	<b>47.908</b>	<b>46.785</b>	<b>44.471</b>	<b>43.071</b>



## Gross land leases and restructured land in port area, 1990-2012



Source: PoA

Total 1990 - 2012: 619 ha.  
Average per year: 27 ha.

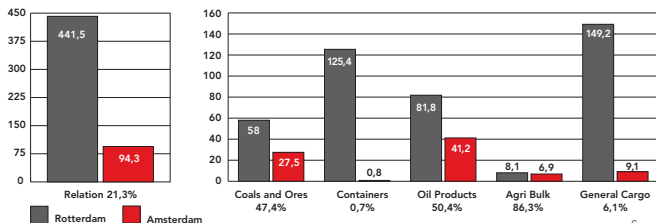
Quay restricted area 469 ha.  
Port related sites 73 ha.  
Mixed premises 71 ha.  
Office related area 6 ha.  
**Total 619 ha**

Total surface 2611 ha.  
Harbour basin 621 ha.  
Port area stock 321 ha.

Total gross land leases 1990 - 2012 619 ha.  
Redeveloped area 1990 - 2012 324 ha.

Total net land leases 1990 - 2011 295 ha.  
Average net land lease per year 13 ha.

## Throughput by commodity 2012 (in million tons) Rotterdam Amsterdam



Source: AP



## Maritime gross added value on direct port activities, 2005-2010

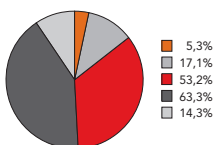
	2005	2006	2007	2008	2009	2010	2010 vs. 2009 in %
<b>Total</b>	<b>3.567</b>	<b>3.808</b>	<b>3.959</b>	<b>4.088</b>	<b>3.408</b>	<b>3.735</b>	<b>10</b>
Business location and industry	2.547	2.677	2.729	2.725	2.342	2.670	14
Industry (total)	2.135	2.193	2.192	2.179	1.811	2.106	16
Nutrition	178	187	208	240	251	256	2
Oil Industry	115	93	81	75	32	22	-31
Chemistry	321	320	345	355	217	303	40
Metal industry	1.257	1.289	1.208	1.151	996	1.286	29
Transport equipment	17	20	19	18	16	14	-13
Electricity	157	189	224	226	208	125	-40
Others	90	96	107	114	91	99	9
<b>Wholesale</b>	<b>217</b>	<b>242</b>	<b>253</b>	<b>247</b>	<b>235</b>	<b>278</b>	<b>18</b>
Transport & Logistics	1.021	1.131	1.231	1.363	1.066	1.065	0
Railways	4	6	7	8	7	6	-14
Road transport	205	260	262	353	218	196	-10
Sea shipping	213	217	207	194	112	94	-16
Inland shipping	42	47	47	59	61	48	-21
Transport services	186	198	228	235	206	231	12
Stevedoring/storage	370	404	481	514	462	489	6
<b>Commercial services &amp; Public Authorities</b>	<b>194</b>	<b>242</b>	<b>284</b>	<b>299</b>	<b>295</b>	<b>286</b>	<b>-3</b>
<b>Maritime gross added value on indirect port activities</b>	<b>1.738</b>	<b>1.961</b>	<b>2.137</b>	<b>2.208</b>	<b>1.844</b>	<b>2.028</b>	<b>10</b>

Unit: x 1 million euro

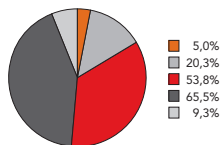
## Direct port related employment Amsterdam Ports, 2005 - 2010

	2005	2006	2007	2008	2009	2010	2010 vs. 2009 in %
<b>Total</b>	<b>32.341</b>	<b>33.639</b>	<b>34.401</b>	<b>35.655</b>	<b>33.498</b>	<b>32.823</b>	<b>-2</b>
Business location and industry	21.602	22.072	22.505	22.335	22.202	21.818	-2
Industry (total)	16.466	16.257	16.183	16.147	16.202	15.939	-2
Nutrition	1.762	1.871	1.968	1.941	1.957	1.941	-1
Oil Industry	201	202	166	133	150	193	29
Chemistry	2.095	1.982	1.931	1.862	1.698	1.601	-6
Metal industry	10.508	10.294	10.192	10.265	10.521	10.489	0
Transport equipment	490	497	467	465	434	400	-8
Electricity	400	402	416	428	378	268	-29
Others	1.012	1.010	1.043	1.053	1.065	1.048	-2
<b>Wholesale</b>	<b>2.728</b>	<b>2.831</b>	<b>2.866</b>	<b>2.849</b>	<b>2.909</b>	<b>2.969</b>	<b>2</b>
Transport & Logistics	10.739	11.567	11.896	13.320	11.297	11.005	-3
Railways	81	111	109	133	122	110	-10
Road transport	3.775	4.525	4.335	5.689	3.720	3.345	-10
Sea shipping	1.102	1.220	1.330	1.270	1.172	1.143	-2
Inland shipping	783	832	838	887	940	859	-9
Transport services	1.719	1.672	1.738	1.726	1.674	1.777	6
Stevedoring/storage	3.280	3.208	3.547	3.616	3.669	3.771	3
<b>Commercial services &amp; Public Authorities</b>	<b>2.408</b>	<b>2.984</b>	<b>3.457</b>	<b>3.340</b>	<b>3.090</b>	<b>2.911</b>	<b>-6</b>
<b>Port related employment indirect Amsterdam Ports</b>	<b>20.866</b>	<b>22.503</b>	<b>24.642</b>	<b>23.489</b>	<b>20.900</b>	<b>21.383</b>	<b>2</b>

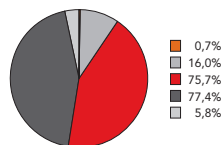
Source: Ministry of Transport Public Works and Water Management



Direct added value 2010



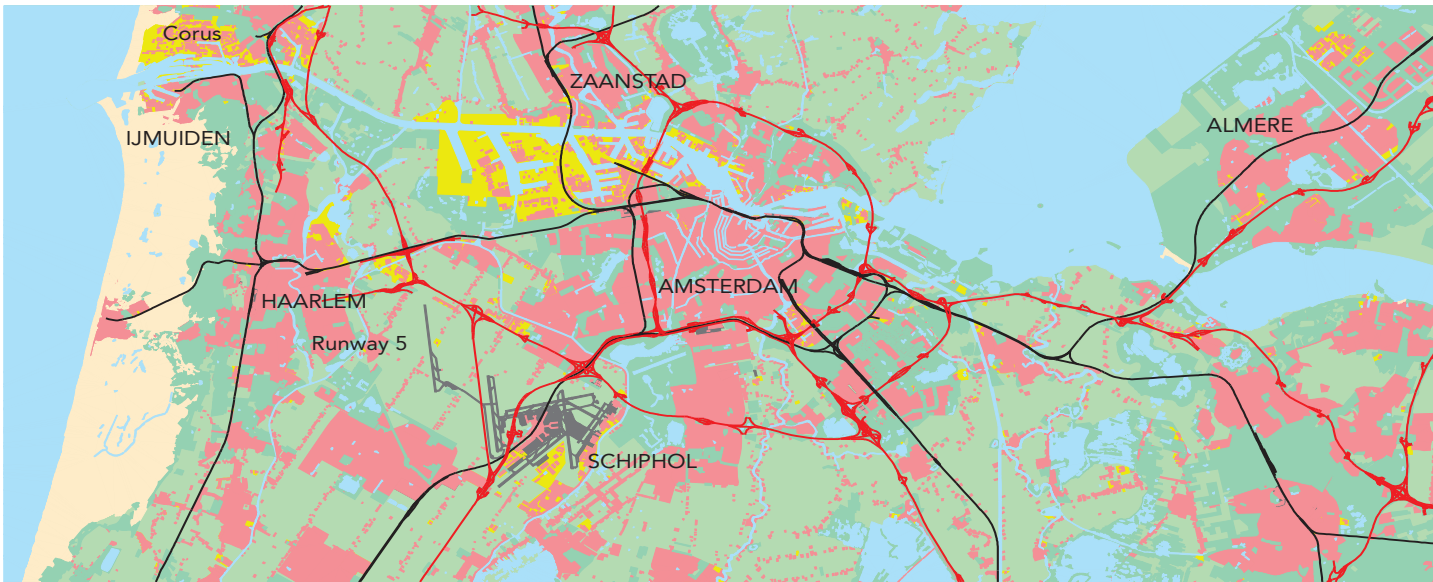
Direct employment 2010



Total throughput 2010

- Northern Seaports
- Amsterdam Ports
- Rotterdam
- Rhine- and Meusemond
- Scheldtbasin

AIRPORT - SEAPORT - CITY



recycling

construction materials

refuse incineration

rubble recycling

MUNICIPAL SERVICES IN WESTPOORT

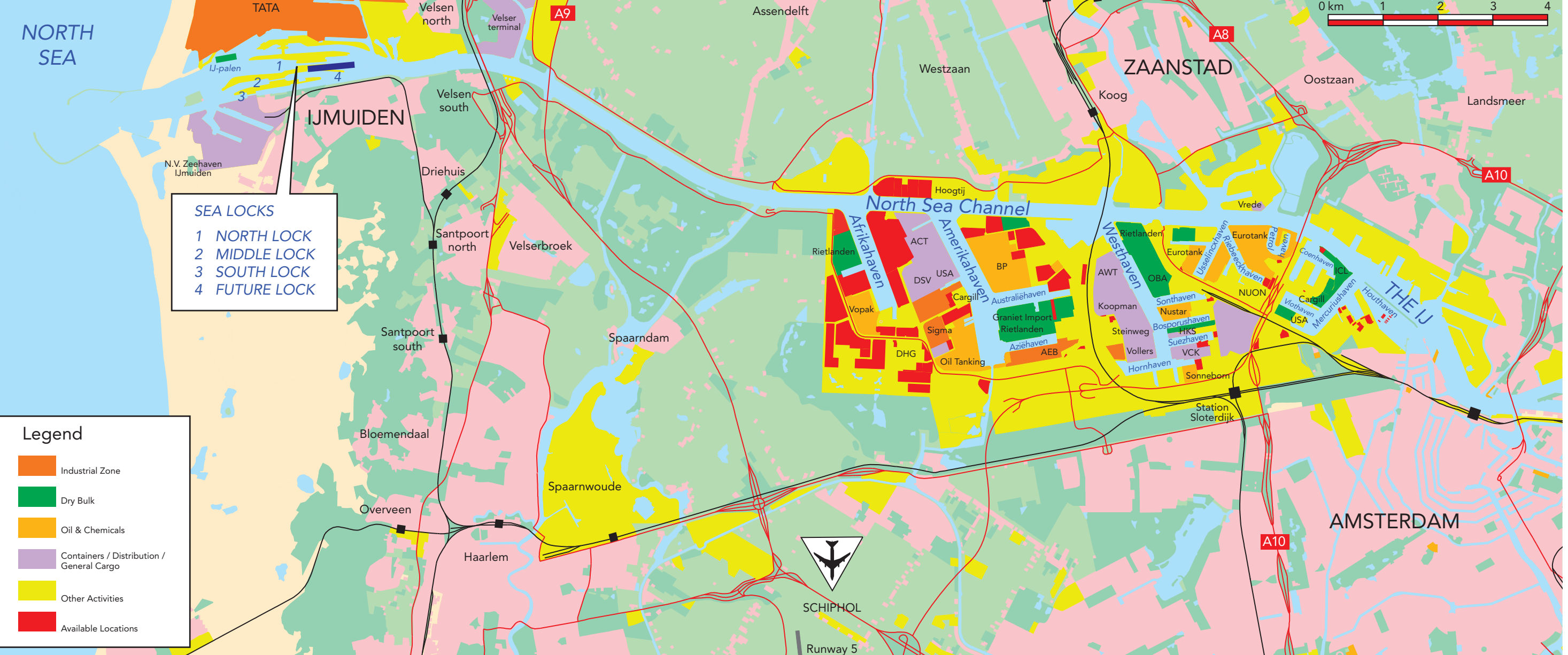


asphalt production and recycling

power stations

refuse collection

concrete production



**SEA LOCKS**

- 1 NORTH LOCK
- 2 MIDDLE LOCK
- 3 SOUTH LOCK
- 4 FUTURE LOCK

**Legend**

- Industrial Zone
- Dry Bulk
- Oil & Chemicals
- Containers / Distribution / General Cargo
- Other Activities
- Available Locations



**SEA LOCKS**

- 1 NORTH LOCK
- 2 MIDDLE LOCK
- 3 SOUTH LOCK
- 4 FUTURE LOCK

**Legend**

- Industrial Zone
- Dry Bulk
- Oil & Chemicals
- Containers / Distribution / General Cargo
- Other Activities
- Available Locations



Colofon:

Port of Amsterdam

P.O. Box 19406, 1000 GK Amsterdam

De Ruijterkade 7, 1013 AA Amsterdam

The Netherlands

Telephone +31 (0)20 523 45 00

Fax +31 (0)20 620 98 21

E-mail [info@portofamsterdam.nl](mailto:info@portofamsterdam.nl)

Website [www.portofamsterdam.nl](http://www.portofamsterdam.nl)

