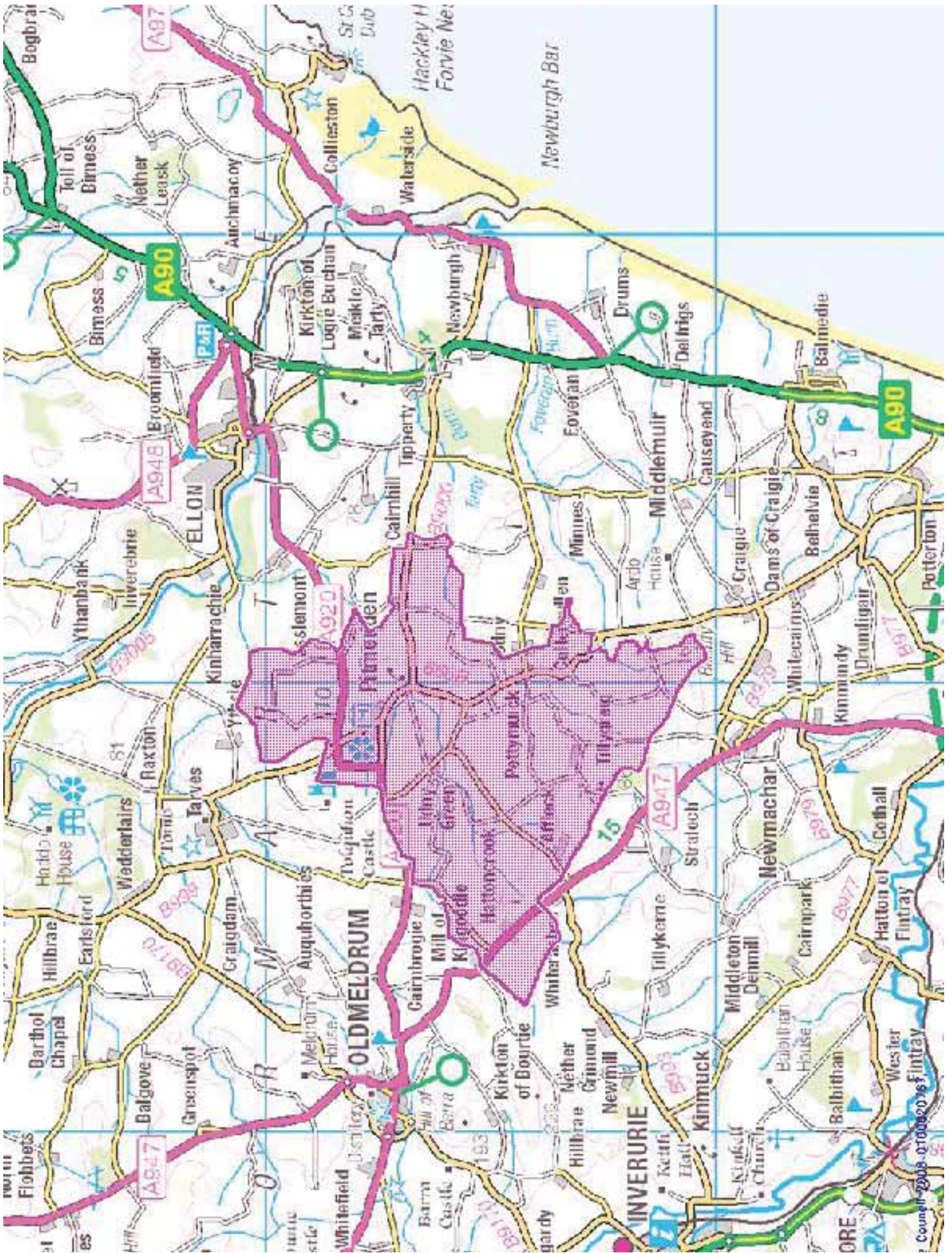




Udny Parish
Community
Action Plan 2012



Udny is a parish and Community Council area in central Formartine, Aberdeenshire, approximately 15 miles north of Aberdeen. It is 4,926 ha in area and has a population of 2,242 (2001 census). Over half of the population lives in Pitmedden, the main settlement, population 1,137 (2001 census). Smaller villages include Udny Green, Hattoncrook and Milldale.

History

The area seems to have taken its name from the Uldney family who were awarded a charter to these lands by King David II in the 14th Century. The parish was erected in 1597, being disjoined from pre-existing adjacent parishes and the Old Parish church at Udny Green was constructed soon after this in 1605.

Udny Castle is an imposing, rectangular, tower house, five stories high and dating from the 15th Century. It is a private residence, still occupied by the Udny family, whose forebear, Ronald of Uldney, was awarded the original 14th Century charter. It emerges above the mature trees of a landscaped park.

Udny Green is the picturesque “secret jewel” of Udny parish and possibly its original community, for it is the location of an early chapel, Christ’s Kirk of Udny, which predates the formation of the parish, and of the original 1605 parish church. The village is sited on the edge of the Udny Castle landscaped estate and has all the architectural characteristics of a planned estate village. It is grouped around an asymmetrical village green with the current parish church (1821) and war memorial crowning its north side and the old cemetery with its intriguing mort house on the south side. Nineteenth Century houses of compatible and sensitive design fill much of the rest of its circumference.

Pitmedden seems to have consolidated around the junction of two turnpike roads, Newburgh to Old Meldrum (opened in 1805), and Aberdeen to Tarves (1825). Its church, located exactly on this junction, was built in 1864 to house a congregation formed in 1843.

Pitmedden House & Gardens

The present Pitmedden House is a 17th-century house, remodelled in 1853 after a destructive fire in 1807. It is thought to incorporate, at its core, a castle built c1430. Its 40 ha (100 acre) estate was gifted to the National Trust for Scotland (NTS) in 1952. It contains a Museum of Farming Life, visitor centre, herb garden, ponds and woodland walk.

Its centrepiece is the stunning Great Garden of Pitmedden, a breath-taking recreation by NTS of a 17th Century formal garden featuring over five miles of box hedging arranged in intricate patterns to form six parterres, filled with some 40,000 plants and bursting with colour in the summer months. The original garden was laid out in 1675 by Sir Alexander Seton, 1st Baronet of Pitmedden, but its design has been lost. Three of the current elaborate formal parterres were reproduced from designs in the Gardens of the Palace of Holyrood as depicted on a 1647 bird’s eye view of Edinburgh by James Gordon of Rothiemay. A fourth parterre is a heraldic design based on Sir Alexander’s coat of arms.

Later History

Agricultural Improvements

The descriptions of Udny parish in the Statistical Accounts of Scotland, the Old (OSA 1794) and New (NSA 1840) give very clear accounts of the life and appearance of the parish and of the changes over the intervening period resulting from the agricultural improving movement. Thus in the OSA



Udny Castle.



Pitmedden House.



Pitmedden Gardens.



Udney Green Church and War Memorial.



Pitmedden Church.



Planning for Real® 2011: Model of Pitmedden.

the improvers are restricted to a few pioneering large landowners such as the Udney estate and the changes are not widespread. Most agricultural land is managed under an infield-outfield system and much of the land is broom, whins and bulrushes. The majority of the population is composed of farmers and their subtenants and there are no towns or villages but 259 households living in scattered farmhouses and croft houses. The author bewails the time wasted in cutting peats, the poor quality of the roads and the short leases which restrict the spread of the improvements. By the NSA, the new agricultural systems are much more widespread, with enclosed fields widely distributed, many farmers following a scientifically based crop rotation and widespread ownership of thrashing machines. There are a similar number of households as in 1794, now 280 families, and the majority of the population are still farmers and subtenants (192 families) but there is a wider number of agricultural service occupations and the turnpikes have arrived, giving much improved trade and access, and supporting seven inns and six merchants.

One intriguing passage demonstrates how precarious agriculture and life was under the earlier system. It describes how in 1782 crops were exceedingly deficient “from want of sunshine to ripen it and by intense frost and snow which came on before it could be cut down.” Though no-one died, hunger and impoverishment was widespread and the poorest had to be fed by supplementary rations brought in by the Church Session and the government. Prosperity had still not recovered to earlier levels by 1794 as the OSA was being composed.

Recent Times

The agricultural nature of the Parish continued up to present times, but the parish took on an additional function in the late 20th Century. The discovery of North Sea Oil in 1969 and the subsequent expansion of Aberdeen only 15 miles away, as the major European Oil centre, expanded commuting from the parish. Between 1991 and 2008, Pitmedden’s population grew from 870 to 1380 with expansion of modern housing estates, and many country cottages and farm buildings have been upgraded for commuters too.

Proposals

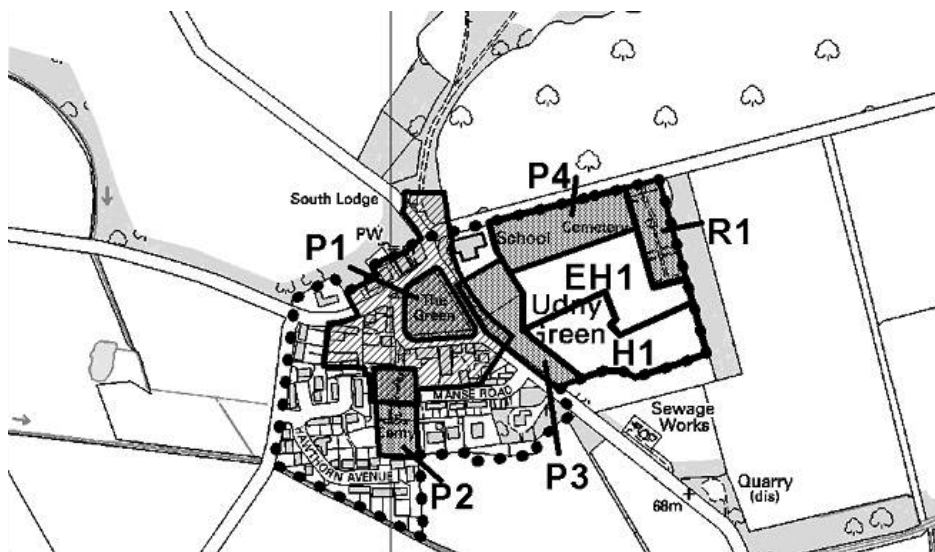
In 2008 Udney Community Council organised a first Planning for Real® (PFR®). This was attended by 300 - 400 people. This suggested a series of proposed projects and policies for the area and, significantly, it endorsed a proposal to develop a community-owned wind turbine to generate income to pay for many of these proposals. Udney Community Council took this turbine project forward. The turbine was commissioned on 6th July 2011 - the first wholly community-owned turbine in mainland UK. A Community Trust was formed to disburse the income from the turbine and a second PFR® was held in March 2011 to revisit and endorse the original proposals and inform the Trust policies.

Udney Community Council undertook a third engagement event in the parish on the 18th and 19th May 2012 to confirm what had been previously put forward and since the Community Trust was now in a position to distribute grants, it wanted confirmation of community aspirations. The official launch of the Udney Community Trust took place at this event.

This document is based on the second and third engagement findings.

Key Planning Objectives for the Settlement

Aberdeenshire Local Development Plan 2012



- To provide for local need for housing.
- To support local services, particularly the Primary School.

Protected Land

- Site P1 is protected to conserve the 'green' of Udny Green.
- Site P2 is protected to conserve the cemetery.
- Site P3 is protected to conserve the recreation area of the Primary School and an adjacent woodland area.
- Site P4 is protected to provide car parking provision, linkages to serve the Primary School and cemetery, and open space as part of the development of site EH1.
- Site R1 is reserved for a new cemetery.
- The Udny Green Conservation Area is shown hatched in the plan.

Existing Site

- Site EH1 has existing planning consent for 15 houses. Provision of car parking, linkages to serve the Primary School and cemetery, and open space is required.

Settlement Infrastructure

- Local mains reinforcement may be required for the water and wastewater infrastructure.

Proposed Site

- Site H1 is allocated for up to 30 houses. Up to 15 houses will be delivered in the first phase with the remaining 15 delivered in the second phase, subject to review of the plan.
- A design brief will be required to coordinate the development of sites EH1, P4 and H1 for up to 45 houses.



General view of Udny Parish.



Udny Green south side.



Udny Green Morthouse in the Old Churchyard.



Pitmedden Village Hall.

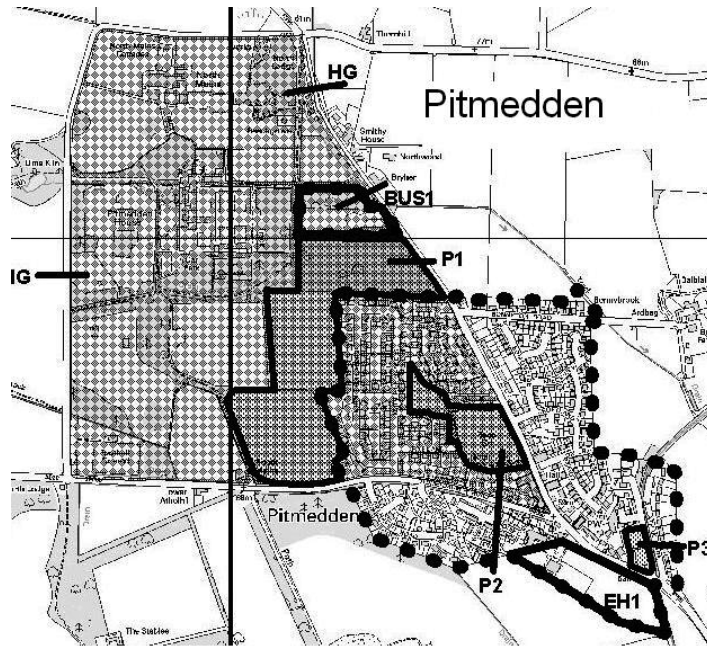


Pitmedden housing estate.



Pitmedden House.

Key Planning Objectives for the Settlement Aberdeenshire Local Development Plan 2012



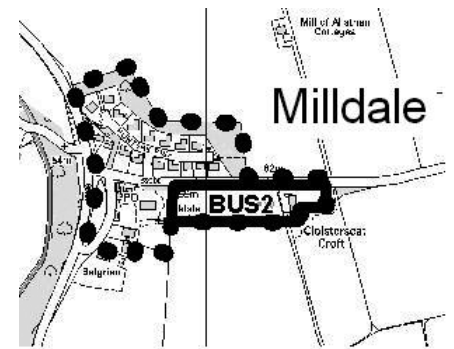
- Preserve the amenity of the settlement.
- Provide opportunities for local employment.
- Provide opportunities for housing to meet local needs.

Protected Land

- Site P1 is protected to conserve the landscape setting of the settlement.
- Site P2 is protected to conserve the playing fields and recreational land.
- Site P3 is protected to conserve the bowling green and tennis courts.
- Site BUS1 is safeguarded for employment uses.
- Site BUS2 is safeguarded for employment uses.
- HG identifies land within the Pitmedden House Gardens and Designed Landscape.

Flood Risk

- Part of sites EH1 and BUS1 lie within the Scottish Environment Protection Agency's indicative I in 200 year flood risk area. A detailed flood risk assessment will be



required to accompany any future development proposals for these sites and an appropriate buffer strip will be required adjacent to the existing watercourse. Realignment of the existing watercourse at site EH1 would be welcomed.

Existing Site

- Site EH1 is carried forward from the previous local plan for up to 14 houses to include community facilities in accordance with the agreed development brief for the site.

For detailed viewing of the Pitmedden and Milldale maps please visit: http://www.aberdeenshire.gov.uk/planning/plans_policies/SGFORMARTINE.pdf

Formartine Local Community Plan 2010-2014 (2012 Update)

The Formartine Community Plan incorporates issues in local communities as well as issues that are arising across the Formartine area as a whole. The Plan lays out the intentions for developments and projects over a four year period and reflects contact and dialogue with local communities, community groups, organisations and individuals. The Community Planning Partners will be developing these projects with local communities by working in partnership with the area's Community Councils and other partners. The Formartine Community Plan is updated on a six monthly basis following a monitoring exercise on existing actions and is

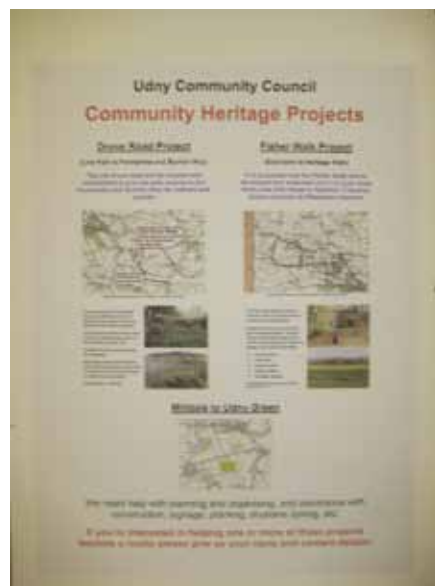
constantly changing to keep the Plan relevant and up to date. A number of actions are detailed in the Formartine Community Plan 2010-2014 that relate to Pitmedden/Milldale, Udney Green and Hattoncreek. The Plan can be found online on the Community Planning Website at www.ouraberdeenshire.org.uk/formartine

Community Planning in Aberdeenshire operates under five main themes; Community Wellbeing; Jobs and the Economy; Lifelong Learning; Sustainable Environment and Developing Our Partnership. Contained with each theme there are a number of actions that are being progressed in the Formartine area. The priorities detailed in the tables over the page have been cross referenced to actions within the Formartine Community Plan.



Planning for Real® 2011.

Heading/Lead Service	Action/Project
Community Wellbeing	Action A13 - To work with local communities to bring forward proposals for enhanced community facilities.
Sustainable Environment	<p>Action D3 - To work with local communities in maintaining and enhancing the appearance of towns and villages in the area through the development of:</p> <ul style="list-style-type: none"> • Formartine in Bloom Competition • Provision of planting material and associated activities. • Haddo Country Park • Nature conservation • Coastal areas and beaches • Paths and Outdoor access • Town and Village Enhancement Grant. • Public Art.



Pitmedden footpath projects.



Planning for Real® 2011: Model of Udney Green.



Dr Spence Memorial Hall, Udney Green.

New Udney Community Hall (Theme: Community Wellbeing - Facilities)

The provision of a new community hall in the parish came out top priority of residents. It is anticipated that a new community hall could host a variety of activities for the local community including a community cinema, a community gym, keep fit classes and activities for children and young people.

Action A13: To work with local communities to bring forward proposals for enhanced community facilities.

Paths Projects (Theme: Sustainable Environment)

Paths linking certain areas of the parish have been highlighted as priority and it is proposed that three projects are implemented. The first project is a proposed route along Drove Road, with the road cleared and refurbished to provide safe access to the Formartine and Buchan Way for walkers and young cyclists. The second project is to propose an extension to the Fisher Walk and extended into a circular route from Linn Kiln Wood to Raitshill, Tolquhon Castle and back to Pitmedden Gardens. The third proposal is to link Udney Green to the post office at Milldale along a footpath near Udney Castle.

Action D3: To work with local communities in maintaining and enhancing the appearance of towns and villages in the area through the development of:

- Formartine in Bloom Competition
- Provision of planting material and associated activities.
- Haddo Country Park
- Nature conservation
- Coastal areas and beaches
- Paths and Outdoor access
- Town and Village Enhancement Grant.
- Public Art.

Park Improvements (Theme: Sustainable Environment)

Park improvements in Pitmedden is a priority for the parish. It is proposed that additional car parking be provided for use while at the park.



War Memorial, Udney Green.



Udney Community Wind Turbine.

New play equipment is also requested, particularly equipment that is suitable for a variety of ages that is interactive and fun while promoting health and wellbeing. Incorporated into this improvement it would be requested that a piece of public art for the village could be included and to look at creating a village centre. The Pitmedden Playpark Trust are leading on moving this forward.

Action D3: To work with local communities in maintaining and enhancing the appearance of towns and villages in the area through the development of:

- Formartine in Bloom Competition
- Provision of planting material and associated activities.
- Haddo Country Park
- Nature conservation
- Coastal areas and beaches
- Paths and Outdoor access
- Town and Village Enhancement Grant.
- Public Art.

Udney Green Hall Refurbishment (Theme: Community Wellbeing - Facilities)

The Community of Udney Green would like to refurbish their hall to make the hall more eco friendly and reduce heating bills. A programme of insulation, new heating system and new double glazing are proposed for the Hall. The management committee of the hall are prepared to lead on this project.

Action A13: To work with local communities to bring forward proposals for enhanced community facilities.

In this sections that follow, list of other priorities are given, together with a note of who would involved in taking action. A summarised action plan can be seen near the back of this document.

Music, Arts and Drama Festival

(Community Wellbeing)

An idea to host a festival in the parish to bring the community together was supported during the planning for real process. This project could be supported and organised by the Udney Community Council along with other local community groups.

Environmental Consideration And Enhancement Across The Parish

(Sustainable Environment)

A number of suggestions were put forward in order to increase Udney's contribution to sustaining the environment across the parish, as well as those noted under the Top Priorities section, these include:-

- An anaerobic digester at the Pitmedden Udney and Tarves Community Composting Project (PUT)
- Polytunnels at PUT to grow plants for use in the community.
- General maintenance of the villages including planting and shrubbery.
- Renewable Energy Installations - Udney Community Wind Turbine.
- Energy Updates and Energy Audits for schemes such as home insulation and boiler replacement.

Udney Community Wind Turbine has now been built and will result in funding opportunities for the Udney Parish. Pitmedden, Udney and Tarves (PUT) Community Composting could potentially benefit from some of these funds when they become available to realise their ambitions. The Community

Council and other community groups could be responsible for continuing to enhance the surroundings of the parish while looking to set up a specific Parish Enhancement Group. Udney Community Trust has attracted funding to develop projects around Fuel Poverty and life skills and learning opportunities throughout the parish.

Tennis Court Lighting

(Sustainable Environment)

In an effort to prolong the use of the tennis courts, new lighting is a need to ensure the facilities were able to offer year round opportunities.

Youth Work Provision

(Community Wellbeing and Lifelong Learning)

Residents of the parish felt that there is a need for a youth worker in the area to be able to support young people and their ambitions and to look at opportunities for skill development.

Elderly Support Plans

(Community Wellbeing)

Often older people feel isolated and vulnerable in their communities and suggestions were put forward to pull together services and activities for older people. A newly formed group called the Ellon Area Health and Wellbeing Group have focused their attention on older people and will be looking to address some of the issues raised in the Ellon area over the coming months and years.



Udney Wind Turbine construction - delivery of tower sections.



Udney Wind Turbine construction - lifting the hub and blades.



Udney Wind Turbine construction - the driving force.

⊖ This action plan summarises the issues highlighted in this report and details what partners will be involved in helping to achieve them.

TOP FOUR PRIORITIES

Action	Independent Group	Partners Involved	Outside Agencies	Target Date
New Udney Community Hall	Udney Community Council Pitmedden Village Hall Committee	Aberdeenshire Council Education and Recreation	External Funders	2015
Paths Projects Drove Road Project Fisher Walk Project Udney Green to Post Office Project.	Udney Community Council Udney Community Trust	Aberdeenshire Council Planning and Environmental Services, Landscape Services, Tarves Community Council		2013
Park Improvements	Pitmedden Park Trust	Udney Community Council, Aberdeenshire Council Landscape Services, Pitmedden Primary School		2013
Refurbishments: Dr Spence Memorial Hall Udney Green	Hall Committee	Udney Community Council, Aberdeenshire Council Education and Recreation		2013

OTHER ISSUES

Action	Independent Group	Partners Involved	Outside Agencies	Target Date
Music, Arts and Drama Festival	Pitmedden Community Music Festival Group	Aberdeenshire Council, Education and Recreation, Licensing Dept, Grampian Police.		22nd & 23rd June 2012 - completed. Thereafter annually.
Tennis Court Lighting	Udny Tennis Club	Udny Community Trust	Sports Scotland	April 2012 - completed
Community Cinema	Udny Community Trust	Village Hall Committee		2013
Energy Audits and reduction of fuel poverty.	Udny Community Trust	Aberdeenshire Council	Big Lottery Fund SCARF Energy Saving Trust	2013/2014
Life Skills and learning opportunities - Dry Stone Dyking (linked to the paths projects)	Udny Community Trust		Dry Stone Walling Association and local dry stone dyke builders	2013/2014

This booklet is one of a series produced by Local Rural Partnerships together with the community under the banner Community Action Plan.

The initiative is sponsored by Aberdeenshire Community Planning Partnership and run by Aberdeenshire Community Economic Development Co-ordinators Forum. The aim is to provide community action plans in an attractive, easy to read, professionally printed format.

For most communities, the content of each community

plan is based on the results of Planning for Real® exercises carried out by the communities themselves, together with any other available reports. This process ensures that the plans are truly community-led.

This information can now guide the community and Community Planning Partners in drawing up detailed action plans to implement the top priorities as well as addressing the other issues which have been identified. For each priority or issue this will involve agreeing who should be involved, what

resources will be needed and target dates for completion. It is hoped that this process will be driven by representatives of the community with support - moral, technical and financial - from the relevant partners.

It is important that this booklet is seen by all concerned as an account of the community's views at the time of the latest consultation, and that it will have to be regularly reviewed and updated. As some projects are completed, other issues will arise and take their place in future versions of the community plan.

Thanks are due to:

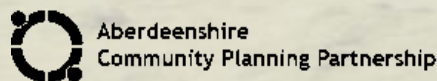
**Udny Community Council
Udny Community Trust
Company Limited
Formartine Partnership Ltd
Formartine Community
Planning Group
Pitmedden and Udny Green
Primary Schools
and finally the residents
of Udny Parish.**



FORMARTINE PARTNERSHIP

29 BRIDGE STREET • ELLON • AB41 9AA

T: 01358 720584 • E: RODGUNSON@FORMARTINEPARTNERSHIP.ORG.UK



www.ouraberdeenshire.org.uk