

INSIDE

Chris Young Makes
Strides At Callout
>page 2

Alan Jackson
Goes Blue
>page 6

Gary Allan's "Storm"
Ends Drought
>page 6

Taylor Swift Makes It
13 Stadiums
>page 7

Dirt Band, Willie,
Terri Revisit Classics
>page 7

BILLBOARD COUNTRY UPDATE EDITED BY TOM ROLAND, Tom.Roland@billboard.com

More Than A Dozen Acts Have Their First Albums On The Launching Pad



The release of a debut album in the days of vinyl was a simple matter: get the music together, shoot a cover photo, then put the artist on the road and the record in the stores.

Almost nothing about the recording business is simple anymore, and more than a dozen acts have debut albums on the way during the first six months of 2013. Although, to be realistic, several of them might not actually make it into circulation.

The release date in contemporary music carries much more significance than it did in that earlier era, and labels now plan, strategize and re-strategize as they balance their own resources with the release schedules of other labels and the marketplace performance of their new artists' singles.

Thus, many of the 14 artists currently expected to release their first albums to the public before the end of June are in flux. **Blue Sky Riders**, whose debut is set for Jan. 29, can feel confident that their release will happen. That's likely true, too, for **Kacey Musgraves**, whose *Same Trailer Different Park* (March 19) is supported by a hit single and an Academy of Country Music Award nomination, and for **Ashley Monroe**, who has a built-in audience through her **Pistol Anni**s membership that helps propel *Like a Rose* (March 5).

Some of the other acts gearing up for a debut in the next five months are likely less certain. For some, the dates are probably

before the end of June, but still TBD. For others, the music isn't completely finished. And for still others, the industry's recent track record suggests artists should view their first release dates with a certain skepticism.

After all, five of the 10 artists who were projected to introduce first-time albums in the first half of 2012 are still waiting for that sweet moment of release. **Brett Eldredge**, whose record

is now slated to hit the market this year, originally expected his debut album to reach the streets in the first half of 2011. And at least four acts whom as recently as December were working toward debut-album launches between January and June are now looking at a later release date or simply planning an introductory EP.

The uncertainty is inherently frustrating to the artist, though the underlying principle is sound. The label wants to make a real splash with its new music by putting it out at a time that maximizes public attention. That was exactly what happened with the debuts by such current hit-makers as **Florida Georgia Line**, **Hunter Hayes**, **Kip Moore** and **Jana Kramer** in the last 18 months.

Here's an overview of the acts who currently plan to release their debut albums in the first half of 2013:

- **Blue Sky Riders** (3Dream): The Jan. 29 release *Finally Home*



DREYER



FARR

BLACKBERRY
SMOKE

THANK YOU
COUNTRY RADIO
FOR SPREADING THE SMOKE!

WCIQ, WWKA, KCYY & KAJA

PRETTY LITTLE LIE

Southern
GROUND
ARTISTS

is a long-simmering collaboration between **Kenny Loggins** and songwriters **Gary Burr** (“That’s My Job”) and **Georgia Middleman** (“I’m In”) that uses some of the same interlocking vocal techniques familiar in the work of **Little Big Town**. It benefits from fierce harmonies and built-in interest, thanks to Loggins’ already-established solo career.

- **Jaida Dreyer** (Streamsound): The first artist signed to **Byron Gallimore’s** Streamsound label is working furiously to finish up her debut project, which is sure to include the brand-new “Half Broke Horses,” released to radio Jan. 28. The voice is unapologetically country, putting her in the same stylistic family as **Kramer** and **Kellie Pickler**.

- **Brett Eldredge** (Atlantic): There’s just a touch of gravel in Eldredge’s voice, which he presents with a commanding, soulful delivery. His love of traditional pop has been referenced more than once during his rise, though his **Pat Greenish** tone is ideally suited for current country.

- **Rachel Farley** (Red Bow): A teen with a sometimes-raw delivery, Farley collaborated on a **Colt Ford** track in 2010, sang background vocals on **Brantley Gilbert’s** album and opened shows for **Jason Aldean** in 2012. Onstage, she exudes confidence and determination—key qualities for the job.

- **Tyler Farr** (Columbia): He’s got built-in country cred: He spent five months as a bouncer at the iconic **Tootsie’s Orchid Lounge** and his stepfather played guitar in **George Jones’** road band. The scratch in Farr’s voice only underscores his authenticity.

- **The Henningsens** (Arista): The Illinois-bred trio—**Brian, Clara** and **Aaron Henningsen**—blends two generations of influences, a smooth confluence of voices and cleverly skewed lyrics. “American Beautiful,” currently at No. 29 on Country Airplay, is likely just a starting point.

- **High Valley** (Eaglemont/Rodeowave): The Canadian family trio has had a previous album, though it was never released in the United States. Strong harmonies and a penchant for small-town themes set the tone for the **Rempel brothers’ Love Is a Long Road**, currently expected in early summer.

- **Chris Janson** (Bigger Picture): His debut single, “Better I Don’t,” sets Janson up as a rival to **Josh Thompson**—rowdy, surly and redneck-rambunctious. Additional tracks support that assessment but also show a vulnerable side.

- **JJ Lawhorn** (Average Joes): Plenty of snarling guitars provide a framework for Lawhorn’s mix of Southern rock, honky-tonk and backwoods lyrical themes.

- **LoCash Cowboys** (Average Joes): **Preston Brust** and **Chris Lucas** got derailed when R&J shut down its radio promotion department just as they were riding a wave of attention as the writers of **Keith Urban’s** “You Gonna Fly.” Now aligned with **Average Joes**, LoCash has intense harmonies, catchy hooks and a bundle of goodwill behind it.

- **Ashley Monroe** (Warner Bros.): The **Pistol Annies** member released an album before, though it was quietly dumped onto the marketplace only after she was released from the prior label. The **Vince Gill**-produced album *Like a Rose*, her first with an actual campaign behind it, demonstrates that classic **Dolly Parton** and **Tammy Wynette** influences can still sound contemporary.

- **Kacey Musgraves** (Mercury): She got a standing ovation last year when she

THIS WEEK AT CALLOUT AMERICA

Chris Young’s “Take It” Makes Its Mark

Chris Young moves “I Can Take It From There” into this week’s No. 1 slot, up from No. 4. The title also slides up to No. 4 favorite from No. 6. Core 35-44 year olds log it at No. 1 and No. 2 favorite. Core males are at No. 1 and core females at No. 2.

Taylor Swift is a strong power with “Begin Again” at No. 2 positive and favorite. Core 35-44 year olds rank it at No. 1 favorite and No. 3 overall. Females 18+ push it to No. 1 favorite, as do core females and females 35-54. Males 18+ are at No. 2, with adult males 35-54 at No. 4.

Gary Allan moves inside the top 5 with “Every Storm (Runs Out Of Rain),” which drops in at No. 4 overall and No. 3 favorite. Younger adults 18-34 post it at No. 3 and No. 2 favorite, while core 35-44s are at No. 5. Females 18+ run it to No. 1, and females 18-34 position it at No. 1 positive and favorite. Core males are at No. 2.

Radio listeners are way out front of the spin country with **George Strait**, grading “Give It All We Got Tonight” at No. 6 positive and favorite. Core 35-44s take it to No. 2 and No. 5 favorite. Core females research at No. 1 and No. 6 favorite. Core males are at No. 5 and the No. 7 favorite.

Craig Morgan remains in the top 10 with “More Trucks Than Cars” at No. 7 overall and No. 11 favorite with listeners 18+. Adults 25-44 roll in at No. 7 and No. 8 favorite. Females are supportive at No. 9 overall, with females 25-34 at No. 6 and No. 4 favorite. Males 25-34 are at No. 5.

View the latest research [here](#) User ID is Callout; password is America.

—John Hart, Bullseye Marketing Research
email: hart@bullsi.com



An advertisement for Billy Ray Cyrus' album "Hillbilly Heart". The background features a photo of Billy Ray Cyrus wearing a cowboy hat and playing a guitar. The text reads: "GETTING BACK TO HIS ROOTS WITH AN EDGE!! LOVE IT!!" — BRIAN HATFIELD, WKSF. Below that, "IMPACTING NOW!" and a circular logo that says "HEAR IT HERE". At the bottom right, there is a logo for "BLUE CABINETS".

CARD FILL IN THE Blank DATES

THE FOLLOW UP TO HIS DEBUT TOP 5 HIT SINGLE,
“DID IT FOR THE GIRL”



ON YOUR DESK: Now!

ADD DATE: February 11th



Randy Houser poses with ABC News reporter Tanya Rivero in the middle of a release-week media campaign in New York behind his Jan. 22 album *How Country Feels*.

sang “Merry Go ’Round” for programmers at Nashville’s Ryman Auditorium during the Country Radio Seminar. The music is artsy, deep and accessible all at once, presented through a voice that’s half-girl, all-woman. Definitely one to follow.

- **Maggie Rose** (RPM): As she insists in her current single, she ain’t your mama. But Rose is a young woman who evinces plenty of ‘tude and feistiness with a voice that could cut through metal. She’s already played the Grand Ole Opry and the Country Throwdown tour. More stages are clearly in store.
- **Charlie Worsham** (Warner Bros.): He sings, he writes, he plays a great guitar and he’s got boy-next-door good looks—he could be this generation’s version of **Steve Wariner**. Worsham made his Opry debut at age 12, and a bundle of cover videos on YouTube—including “What I Like About You” and “I Want You to Want Me”—affirm his creative streak.

BILLBOARD COUNTRY BOXSCORE			
Gross Ticket Price(s)	Artist Venue/Date(s)	Attendance Capacity	Promoter(s)
\$499,966 \$63.50, \$42.50	CARRIE UNDERWOOD Bankers Life Fieldhouse, Indianapolis/Nov. 24	8,964 sellout	AEG LIVE
\$485,622 \$67.50, \$43	ZAC BROWN BAND Allen Co. War Memorial Coliseum, Ft. Wayne, Ind./Jan. 11	8,750 sellout	JAM PRODS., OUTBACK SOUND EVENTS
\$478,376 \$65, \$49.50	ZAC BROWN BAND Alliant Energy Center, Madison, Wis./Nov. 9	7,837 sellout	FRANK PRODS.
\$477,040 \$66, \$46	CARRIE UNDERWOOD BB&T Center, Sunrise, Fla./Dec. 22	7,945 8,226	AEG LIVE
\$476,935 \$63.50, \$43.50	CARRIE UNDERWOOD FedExForum, Memphis/Dec. 18	8,367 sellout	AEG LIVE

Reported worldwide boxscore figures for Country artists. Boxscore figures should be submitted to Bob Allen by phone (615-793-0466), fax (615-793-2891) or email (bob.allen@billboard.com).

MOVERS & SHAKERS

Academy of Country Music CEO **Bob Romeo** will receive the Country Radio Seminar President’s Award during the Country Radio Hall of Fame induction ceremony on Feb. 27 at the Nashville Convention Center. Also added to the CRS lineup are **Thomas Rhett** and **the Warren Brothers**, who will play the “WCRC Live!” songwriters showcase. **Brad** and **Brett Warren**, who have recorded as a duo, co-wrote “Red Solo Cup” and “Felt Good on My Lips.” The \$499 CRS registration rate goes up by \$100 on Feb. 16 . . . **Steve Geoffries** has been appointed Clear Channel/Phoenix VP of programming, the Charlotte Observer reports. The new job has him working with eight Arizona stations, including country KNIX. He was previously Clear Channel/Charlotte-Raleigh program manager, a post affiliated with country WKKT Charlotte . . . Cumulus/Albuquerque bid adieu to a pair of executives, according to Inside Radio. Market manager **Milt McConnell** resigned, effective Feb. 1. KRST PD **Eddie Haskell** subsequently turned in his resignation . . . Grenax Broadcasting/Se-dona, Ariz., made interim PD **Jay Arthur**’s post permanent, RadioInfo.com reports. Arthur oversees three stations, including country KSED.

‘ROUND THE ROW

Nashville-based marketing company Entertainment Evolution promoted **Shelly Mullins** to VP and hired **Johann Porisch** as account executive. The firm’s clients include **the Roys**, **Janie Fricke** and the RFD show “Larry’s Country Diner.” Reach Mullins [here](#) and Porisch [here](#) . . . Deer Park, Texas-based A-Blake Records has hired **Robert Mento** to a Nashville-based radio promotion business. His first assignment will be **Jason Cassidy**’s “Blame It on Waylon.” Reach Mento [here](#) . . . The Momentum Label Group has enlisted New Revolution Entertainment to handle radio promotion for **Rachele Lynae**’s next single, “Fishin’ for Something” . . . The law firm Crownover, Blevins, P.C. has moved to 54 Music Square East in Nashville . . . Songwriter **Adam Wright** has signed a publishing deal with Frank Liddell’s Carnival Music. Wright is currently nominated for a best country song Grammy Award as the co-writer of the **Alan Jackson** single “So You Don’t Have to Love Me Anymore” . . . The Nashville Songwriters Assn. International’s annual Tin Pan South songwriters festival has been set for April 2-6 in Music City . . . Songwriter **Matraca Berg** (“You and Tequila,” “Strawberry Wine”) has been added as a judge for the MerleFest Chris Austin Songwriting Contest, along with singer/songwriter **Chris Smither** and **Lynda Dawson**, of the bluegrass act **the Kickin Grass Band**. Entries can be submitted [here](#) through Feb. 19 . . . **Tony Douglas**, a former member of the KWKH Shreveport, La., “Louisiana Hayride,” died Jan. 22 in Athens, Texas. Douglas landed five singles on Billboard’s Hot Country Songs during his recording career, bested by “His and Hers” (No. 23, 1963).



WRIGHT

THE NEW SINGLE FROM

train

“BRUISES”

Feat. Ashley Monroe

NEW THIS WEEK: KRTY, WTGE & WNCY!

ALREADY ADDED:

KNIX, KMPS, WYCQ, WKXC, WPOR, WSIX, KAJA, KRTY, WMIL, KKGO, WJVC, KMNB, WYCD, KUPL, KBEQ, KSOP, KEYY, WXBQ, WUSY, KHGE, WCEN, WQBE, KAJA, SIRIUS XM/THE HIGHWAY, KGKL, KLLL & MANY MORE!

Blowing Up Coast-To-Coast Now!

www.savemesanfrancisco.com
Promotion Proudly Powered By Nine North

WHAT A RUN!

**THANK
YOU
COUNTRY
RADIO!**



OVER 3,200,000 DIGITAL TRACKS SOLD TO DATE!

OVER 500,000 HEADLINING, HARD TICKETS SOLD

TWO PLATINUM SELLING #1 SMASH HITS!
"CRAZY GIRL" & "EVEN IF IT BREAKS YOUR HEART"

2012 ACM AWARD FOR SONG OF THE YEAR

2013 GRAMMY NOMINATIONS FOR
BEST COUNTRY SONG & BEST COUNTRY DUO/GROUP PERFORMANCE

NEW SINGLE
— FROM A BRAND NEW ALBUM —
THIS SPRING!

Republic
NASHVILLE



Show Dog-Universal artist Joel Crouse stopped by WXTU Philadelphia on a radio-promotion tour supporting his first single, "If You Want Some." From left at the station are Show Dog-Universal VP of promotion Rick Moxley, guitarist Kyle Rife, WXTU PD Shelly Easton, Crouse, Show Dog-Universal regional promotion and marketing manager Macy Morgenthaler, WXTU music director Mark Razz and WXTU VP/GM Natalie Conner.

GOOD WORKS

A major star takes over a legendary venue for a great cause when **Alan Jackson** headlines the fifth annual Stars Go Blue concert on March 20 at the Ryman Auditorium in Nashville.

Founded by artist/producer **Charlie Kelley**, the event's tickets include a limited number of \$500 VIP packages that feature gold-circle seating, a meet-and-greet with Jackson, an autographed copy of his book "Seasons of Sweetbriar" and entrance to a reception catered by the Loveless Café.

The Stars Go Blue raises money for the Colon Cancer Alliance and its Blue Note Fund.

The four previous Stars Go Blue shows have been held at either the Count Music Hall of Fame and Museum and or the Loveless Barn. Earlier participants include **Josh Turner, Wade Hayes, Vince Gill, Trace Adkins, Riel Skaggs** and **Rodney Crowell**, among others.

TWEET OF THE WEEK 

Did you watch the NFL's Pro Bowl game on Sunday? No!? **Oak Ridge Boy J Bonsall** wouldn't blame you:

"never heard: 'OH WOW.... The PRO BOWL.... I need to set my DVR!!!

To follow BCU, go to [Twitter.com/bbcountryupdate](https://twitter.com/bbcountryupdate).



Craig Campbell joins **Marie Osmond** on the set of her Hallmark Channel show "Marie." Campbell sang "Outta My Head" and "Family Man" for the episode, which airs Jan. 29.

ON THE CHARTS WADE JESSEN wade.jessen@billboard.com

Perfect 'Storm': Allan's First Leader Since 2004; Carrie Underwood Fattens Top 10 Tally; Best Start Yet For Lady Antebellum



Gary Allan claims his fourth No. 1 and first in more than eight years, noted as "Every Storm (Runs out of Rain)" (MCA Nashville) gains approximately 3 million audience impressions and steps 2-1 on Billboard's Country Airplay chart. The California native most recently topped the chart when "Nothing on but the Radio" spent two weeks at the summit in December 2004. Allan's new chart topper marks the longest span between No. 1 singles for any artist since **Garth Brooks** went a little more than nine years between "To Make You Feel My Love" in 1998 and "More Than a Memory" in 2007. Three months before Brooks led with "Memory," **Tracy Lawrence** reigned for the first time in 11 years with "Find Out Who Your Friends Are."

Top local audience contributors for Allan's "Storm" during the Jan. 21-27 Nielsen BDS tracking week are **KKGO** Los Angeles (1.4 million impressions), **WUSN** Chicago (1.1 million), **KKBQ** Houston (923,000), **WYCD** Detroit (798,000) and **WKLB** Boston (798,000). The track has also been a quick mover on Country Digital Songs, where it peaked at No. 13 in its 10th chart week (Dec. 22 chart), and Nielsen SoundScan reports roughly 745,000 downloads sold, marking his third song to sell at least a half million. The other gold-plus sellers in Allan's catalog are "Best I Ever Had" (2005) and "Watching Airplanes" (2008).

Allan's radio chart history includes three previous leaders: "Man to Man" and "Tough Little Boys" (both 2003), and the aforementioned "Radio." On Hot Country Songs, "Storm" reached a new peak at No. 2 last week (on the chart dated Feb. 2). This week's Hot Country Songs chart appears in the Billboard print issue dated Feb. 9, and will be serviced to Billboard Country Update readers Jan. 31 in our midweek edition.



Meanwhile, **Carrie Underwood** scores her 17th career top 10 on Country Airplay with "Two Black Cadillacs" (19/Arista Nashville), which advanced 11-10 in its 12th chart week. The song continues her streak of consecutive top 10 radio-promoted singles (excluding holiday tracks), which encompass her entire career output. Each of the prior 16 top 10s have either peaked No. 1 (13) or No. 2 (three).

Since Underwood achieved her first top 10 with "Jesus, Take the Wheel" December 2005, no other woman has amassed more. During that time frame Underwood has been running a back-and-forth race with **Taylor Swift** for the most radio top 10s—Swift logged her first top 10 with "Tim McGraw" in December 2006—and tied Underwood with 16 apiece when "Begin Again" cracked the top 10 on the Jan. 5 Country Airplay scorecard.

Lady Antebellum claims its highest debut on Country Airplay with "Down town" (Capitol Nashville), which chimes in at No. 25 with spins at 100 of the 125 stations monitored for the chart. That surpasses the trio's No. 28 debut with "Just a Kiss" on the May 2011, chart—it ended up spending two weeks at No. 1 later that summer. The new track introduces the threesome's upcoming fourth studio album, for which no title or release date has been announced. It most recently reached the summit with "We Owned the Night," which became its sixth No. 1 in December 2011.

HOUSEKEEPING: After being temporarily removed from the Country Airplay panel due to technical issues, **KWCC** Denver returns for this week's chart. **WXCY** Wilmington, De., remains on hiatus from the panel while monitoring issues are being resolved.

MUSIC NOTES

Dierks Bentley and **Miranda Lambert**, who are currently on tour together, will also pair up for a performance on the Grammy Awards on Feb. 10. **Carrie Underwood**, nominated for her single “Blown Away,” has likewise been added to the lineup for the CBS telecast, which also boasts **Jack White**, **Elton John**, **Ed Sheeran**, **the Lumineers** and host **LL Cool J**.

The **Taylor Swift** machine is in full gear. Keds is launching a marketing campaign with a “brave girls” theme to target young female consumers. Swift will also portray the fairytale character Rapunzel in a new campaign for Disney Parks that incorporates fellow celebrities **Tina Fey**, **Jessica Biel** and **Scarlett Johansson**, among others. And there’s a new campaign that ties her to Diet Coke coming this spring. As if that’s not enough, Swift—who has a well-known affinity for the No. 13—has added another stadium date to her *Red* tour itinerary, this one at MetLife Stadium in East Rutherford, N.J., on July 13. It gives her 13 stadium gigs total this summer.

A bevy of landmark material is becoming recorded product once again. **Nitty Gritty Dirt Band’s** 1972 album *Will the Circle Be Unbroken* is being remastered for Feb. 26 reissue on 180-gram vinyl and digital HD tracks. Willie Nelson plans a new album of older songs, *Let’s Face the Music and Dance*, on Sony’s Legacy imprint on April 16. The tracks include covers of **Gene Autry’s** “South of the Border,” **Spade Cooley’s** “Shame on You” and **Carl Perkins’** “Matchbox.” **Terri Clark** issues *Classic* on Jan. 29. It includes new takes on **Glen Campbell’s** “Gentle on My Mind,” **Linda Ronstadt’s** “Love Is a Rose” and **Merle Haggard’s** “Swinging Doors.”



Exile launches a 50 Years in Music tour on Jan. 29 at the KCI Expo Center in Kansas City, Mo. The band, founded in Kentucky in June 1963, still features founding member **J.P. Pennington** and has reassembled the lineup it had when it first debuted on the country charts in 1983: guitarist/vocalist **Les Taylor**, bassist **Sonny Lemaire**, keyboardist **Marlon Hargis** and drummer **Steve Goetzman**. Lemaire’s daughter, **Nicole Lemaire**, is writing a book on the band, “Life in Exile: A Journey Home,” due later this year.

POWER PLAYLISTS™			
WPOC Baltimore, MD PD: Justin Cole Clear Channel: 410 366-3693		WPOC 93.1 Baltimore's Country Station	
	Plays	TW	LW
1 Gary Allan <i>Every Storm (Runs Out Of)</i>	48	41	
2 Jason Aldean <i>With Luke B The Only W</i>	45	41	
3 Taylor Swift <i>Begin Again</i>	45	44	
4 Brad Paisley <i>Southern Comfort Zone</i>	45	44	
5 Randy Houser <i>How Country Feels</i>	45	45	
6 The Band Perry <i>Better Dig Two</i>	39	29	
7 Tim McGraw <i>One Of Those Nights</i>	36	34	
8 Kip Moore <i>Beer Money</i>	33	33	
9 Carrie Underwood <i>Two Black Cadillac</i>	30	24	
10 Hunter Hayes <i>Somebody's Heartbreak</i>	28	26	
11 Dierks Bentley <i>Tip It On Back</i>	27	25	
12 Casey James <i>Crying On A Suitcase</i>	26	24	
13 Little Big Town <i>Tornado</i>	26	25	
14 Thomas Rhett <i>Beer With Jesus</i>	24	24	
15 Chris Cagle <i>Let There Be Cowgirls</i>	24	28	
16 Lee Brice <i>I Drive Your Truck</i>	23	19	
17 Blake Shelton <i>Sure Be Cool If You D</i>	23	19	
18 Kacey Musgraves <i>Merry Go 'Round</i>	23	23	
19 Thompson Square <i>If I Didn't Have Yo</i>	22	24	
20 Rodney Atkins <i>Take A Back Road</i>	21	8	
21 Jake Owen <i>The One That Got Away</i>	21	21	
22 Florida Georgia Line <i>Cruise</i>	21	24	
23 Zac Brown Band <i>Goodbye In Her Eyes</i>	21	42	
24 Kenny Chesney <i>Come Over</i>	18	15	
25 Toby Keith <i>Hope On The Rocks</i>	17	11	
26 Jason Aldean <i>Take A Little Ride</i>	17	14	
27 Lee Brice <i>Hard To Love</i>	17	18	
28 Carrie Underwood <i>Blown Away</i>	17	22	
29 Eli Young Band <i>Say Goodnight</i>	16	12	
30 Gloriana (<i>Kissed You</i>) <i>Good Night</i>	16	14	

WPCV Lakeland, FL PD: Mike James APD/MD: Jeni Taylor Hall: 863 682-8184		97 COUNTRY Lakeland, FL	
	Plays	TW	LW
1 Gary Allan <i>Every Storm (Runs Out Of)</i>	35	34	
2 Tim McGraw <i>One Of Those Nights</i>	35	34	
3 Hunter Hayes <i>Somebody's Heartbreak</i>	35	34	
4 Florida Georgia Line <i>Cruise</i>	35	35	
5 Randy Houser <i>How Country Feels</i>	34	32	
6 Zac Brown Band <i>Goodbye In Her Eyes</i>	33	35	
7 Jason Aldean <i>With Luke B The Only W</i>	32	36	
8 Chris Cagle <i>Let There Be Cowgirls</i>	31	34	
9 Jake Owen <i>The One That Got Away</i>	28	31	
10 Dierks Bentley <i>Tip It On Back</i>	23	20	
11 The Henningsens <i>American Beautiful</i>	23	22	
12 Carrie Underwood <i>Two Black Cadillac</i>	22	21	
13 Lee Brice <i>I Drive Your Truck</i>	22	22	
14 Dustin Lynch <i>She Cranks My Tractor</i>	20	20	
15 Toby Keith <i>Hope On The Rocks</i>	19	18	
16 Thompson Square <i>If I Didn't Have Yo</i>	19	20	
17 Brantley Gilbert <i>You Don't Know Her</i>	17	4	
18 Jason Aldean <i>Dirt Road Anthem</i>	17	15	
19 Eric Church <i>Springsteen</i>	17	17	
20 Lee Brice <i>A Woman Like You</i>	16	4	
21 Luke Bryan <i>Kiss Tomorrow Goodbye</i>	16	15	
22 Rascal Flatts <i>Changed</i>	16	15	
23 Little Big Town <i>Tornado</i>	16	15	
24 The Band Perry <i>Better Dig Two</i>	16	16	
25 Justin Moore <i>Til My Last Day</i>	16	17	
26 Kenny Chesney <i>Come Over</i>	16	17	
27 Jana Kramer <i>Why Ya Wanna</i>	16	18	
28 Easton Corbin <i>Lovin' You Is Fun</i>	15	4	
29 Miranda Lambert <i>Mama's Broken Heart</i>	15	12	
30 Kacey Musgraves <i>Merry Go 'Round</i>	15	13	

ON THIS DATE IN COUNTRY MUSIC

Jan. 28

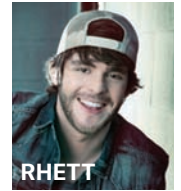
- 2003: Virgin releases the soundtrack to “How to Lose a Guy in 10 Days.” Included on it is **Keith Urban’s** “Somebody Like You.”

Jan. 29

- 1977: **Kris Kristofferson** wins the Golden Globe for best actor in a musical or comedy for “A Star Is Born.”

Jan. 30

- 2012: Valory releases **Thomas Rhett’s** debut single, “Something to Do With My Hands,” to radio.
- 2011: **Dierks Bentley** begins several days of re-recording at Echo Mountain Studios in Asheville, N.C., the sessions captured by video live without sound online. The sessions yield his hit “Am I the Only One.”



Jan. 31

- 2010: **Taylor Swift** picks up four statuettes at the 52nd annual Grammy Awards, aired on CBS from Los Angeles’ Staples Center. Fearless takes album of the year and best country album, while “White Horse” earns best country female vocal and best country song.
- 1993: **Garth Brooks** sings the national anthem during a pregame show that also features **Tanya Tucker**, **Billy Burnette** and **Fleetwood Mac** at Super Bowl XXVII at the Rose Bowl in Pasadena, Calif. Dallas beats Buffalo 52-17.

Feb. 1

- 2008: Pepsi debuts its Pepsi Stuff ad campaign on radio, featuring **Blake Shelton’s** “Home.”

Feb. 2

- 1993: **Willie Nelson** agrees to pay \$9 million of the \$16.7 million he owes the Internal Revenue Service in a meeting at the IRS office in Austin. (More than \$3 million of that figure has already been paid.)
- 1974: **Dolly Parton’s** “Jolene” goes to No. 1 on Billboard’s country chart.

Feb. 3

- 1968: **Johnny Cash** receives a key to the City of Memphis.
- 1963: **Merle Haggard’s** prison sentence ends. He served two years and nine months in jail and two years and three months on parole.

Source: RolandNote.com, the Ultimate Country Music Database



Current Grammy finalists **Dierks Bentley** and **Hunter Hayes** were among the guests when the Recording Academy hosted a Nashville Grammy Nominees party on Jan. 22. From left are Nashville chapter president **Jon Randall Stewart**, **Bentley**, **Hayes** and Recording Academy chair of the board of trustees **George Flanigen**.

GARY ALLAN

Thank, Country
sooo much! Radio
For the #1
Gary Allan



EVERY STORM [RUNS OUT OF RAIN]

#1

- #1 single BB & CA
- #1 Country Album
- #1 Billboard Top 200

Thank You, Country Radio!

www.garyallan.com

MCA
NASHVILLE
© 2013 MCA Nashville,
a Division of UMG Recordings, Inc.

[click to view](#)

billboard Country Airplay

AIRPLAY
MONITORED BY
nielsen
BDS

THIS WEEK	LAST WEEK	WKS ON CHART	TITLE Imprint/Label	Artist	AUDIENCE (IN MILLIONS)		PLAYS		
					THIS WEEK	+/-	THIS WEEK	+/-	RANK
1	2	22	EVERY STORM (RUNS OUT OF RAIN) MCA Nashville	★★ No. 1 (1 week) ★★ Gary Allan	38.895	+2.974	6204	462	1
2	3	15	THE ONLY WAY I KNOW Broken Bow	Jason Aldean With Luke Bryan & Eric Church	37.071	+1.436	5991	292	2
3	5	13	BETTER DIG TWO Republic Nashville	The Band Perry	32.956	+2.521	5235	298	3
4	1	40	HOW COUNTRY FEELS Stoney Creek	Randy Houser	31.592	-4.678	5073	-943	4
5	6	19	SOUTHERN COMFORT ZONE Arista Nashville	Brad Paisley	31.437	+1.050	5067	64	5
6	7	13	ONE OF THOSE NIGHTS Big Machine	Tim McGraw	29.687	+2.390	4817	356	6
7	9	24	TIP IT ON BACK Capitol Nashville	Dierks Bentley	26.117	+1.623	4207	230	9
8	8	18	BEGIN AGAIN Big Machine	Taylor Swift	25.682	+0.401	4272	76	7
9	10	18	TORNADO Capitol Nashville	Little Big Town	25.236	+1.673	4251	319	8
10	11	12	TWO BLACK CADILLACS 19/Arista Nashville	Carrie Underwood	23.687	+1.385	4010	262	10
11	12	16	SOMEBODY'S HEARTBREAK Atlantic/WMN	Hunter Hayes	23.166	+1.468	3751	151	11
12	14	4	SURE BE COOL IF YOU DID Warner Bros./WMN	Blake Shelton	18.487	+2.859	3218	466	12
13	13	22	MERRY GO 'ROUND Mercury	Kacey Musgraves	18.466	+1.311	3090	100	13
14	16	9	I DRIVE YOUR TRUCK Curb	Lee Brice	17.117	+2.285	2938	331	14
15	15	33	CRYING ON A SUITCASE 19/Columbia Nashville	Casey James	16.171	+1.039	2825	111	15
16	17	31	LET THERE BE COWGIRLS Bigger Picture	Chris Cagle	14.984	+1.114	2650	172	16
17	18	15	IF I DIDN'T HAVE YOU Stoney Creek	Thompson Square	14.402	+1.280	2569	158	17
18	20	15	I CAN TAKE IT FROM THERE RCA Nashville	Chris Young	12.561	+0.766	2488	137	18
19	21	13	GIVE IT ALL WE GOT TONIGHT MCA Nashville	★★ Airpower ★★ George Strait	10.711	+0.538	2063	86	19
20	25	6	MAMA'S BROKEN HEART RCA Nashville	Miranda Lambert	9.431	+2.301	1711	354	22
21	24	12	HOPE ON THE ROCKS Show Dog-Universal	Toby Keith	9.393	+1.699	1935	286	20
22	23	12	SHE CRANKS MY TRACTOR Broken Bow	Dustin Lynch	9.263	+0.602	1856	122	21
23	29	8	GET YOUR SHINE ON Republic Nashville	Florida Georgia Line	6.794	+1.907	1209	355	25
24	27	15	MORE THAN MILES Valory	Brantley Gilbert	6.565	+0.700	1408	133	24
25	NEW	1	DOWNTOWN Capitol Nashville	★★ Hot Shot Debut/Breaker/Most Increased Audience/Most Added ★★ Lady Antebellum	6.391	+6.391	894	894	30
26	26	19	AMERICAN HEART Warner Bros./WAR	Faith Hill	6.011	-0.393	1430	-80	23
27	32	14	WHISKEY Elektra Nashville/WMN	Jana Kramer	4.611	+0.730	834	94	31
28	31	20	CAN'T SHAKE YOU Emblem/Warner Bros./WAR	Gloriana	4.585	+0.438	1164	92	26
29	30	7	AMERICAN BEAUTIFUL Arista Nashville	The Henningsens	4.572	+0.322	1163	82	27
30	34	6	CHANGED Big Machine	Rascal Flatts	4.489	+1.148	1125	200	28

BILLBOARD COUNTRY AIRPLAY PANEL – 126 STATIONS

Akron, Ohio	WQMX	Ft. Myers, Fla.	WCKT	Madison, Wis.	WWQM	Rochester, N.Y.	WBEE
Albany, N.Y.	WGNA		WWGR	McAllen, Texas	KTEX	Sacramento, Calif.	KNCI
Albuquerque, N.M.	KRST	Ft. Wayne, Ind.	WQHK	Memphis	WGKX		KNTY
Asheville, N.C.	WKSF	Fresno, Calif.	KSKS	Miami	WKIS	St. Louis	KSD
Atlanta	WUBL	Gainesville, Fla.	WOGK	Milwaukee	WMIL		WIL
Augusta, Ga.	WKXC	Grand Rapids, Mich.	WBCT	Minneapolis	KEYE	Salt Lake City	KEGA
Austin, Texas	KASE	Greensboro, N.C.	WPAW		KMNB		KSOP
Bakersfield, Calif.	KUZZ		WTQR	Mobile, Ala.	WKSJ	San Antonio, Texas	KAJA
Baltimore	WPOC	Greenville, S.C.	WESC	Monmouth/Ocean, N.J.	WKMK		KCYC
Baton Rouge, La.	WYNK	Harrisburg, Pa.	WSSL	Nashville	WSIX	San Diego	KSON
Birmingham, Ala.	WDXB	Hartford, Conn.	WRBT	New Bern, N.C.	WRNS	San Jose, Calif.	KRTY
Boise, Idaho	KAWO	Houston	WWYZ	New Orleans	WNOE	Santa Rosa, Calif.	KFGY
Boston	WKLB		KILT	Norfolk, Va.	WGH	Sarasota, Fla.	WCTQ
Buffalo, N.Y.	WYRK	Huntsville, Ala.	KKBQ	Oklahoma City, Okla.	WUSH	Seattle	KKWF
Charleston, S.C.	WCKN	Indianapolis	WDRM		KJKE		KMPS
	WEZL	Jacksonville, Fla.	WFMS	Omaha, Neb.	KTST	Shreveport, La.	KXKS
Charleston, W. Va.	WQBE		WLHG	Orlando, Fla.	KXKT	Spokane, Wash.	KXLY
Charlotte, N.C.	WKKT	Johnson City, Tenn.	WGNE	Philadelphia	WWKA	Springfield, Mass.	WRNX
	WSOC	Kansas City	WQIK	Phoenix	WXTU	Springfield, Mo.	KTTS
Chattanooga, Tenn.	WUSY		WXBQ	Pittsburgh	KMLE	Syracuse, N.Y.	WBBS
Chicago	WUSN	Knoxville, Tenn.	KBEQ		KNIX	Tampa, Fla.	WFUS
Cincinnati	WUBE	Lafayette, La.	WDAF		WDSY		WQYK
Cleveland	WGAR	Lakeland, Fla.	KFKF		WOGI		KVOO
Colorado Springs, Colo.	KATC	Las Vegas	WCVQ	Portland, Maine	WPOR	Tulsa, Okla.	KWEN
Columbia, S.C.	WCOS		KMDL	Portland, Ore.	WTHT		WMZQ
Columbus, Ohio	WCOL	Lexington, Ky.	WPCV	Providence, R.I.	KUPL	Washington, D.C.	WIRK
Corpus Christi, Texas	KRYS	Little Rock, Ark.	KCYE	Raleigh, N.C.	KWJJ	West Palm Beach, Fla.	KFDI
Denver	KWOF	Los Angeles	KWNR	Reno, Nev.	WCTK	Wilkes Barre, Pa.	WGGY
	KYGO	Louisville, Ky.	WBUL	Riverside, Calif.	WQDR	Wilmington, Del.	WXCX
Des Moines, Iowa	KHKI		KSSN	Roanoke, Va.	KBUL	York, Pa.	WGTY
Detroit	WYCD		KKGO		KFRG		
			WAMZ		WSLC		
			WQNU				

billboard Country Airplay

AIRPLAY
MONITORED BY
nielsen
BDS

THIS WEEK	LAST WEEK	WKS ON CHART	TITLE Imprint/Label	Artist	AUDIENCE (IN MILLIONS)		PLAYS		
					THIS WEEK	+/-	THIS WEEK	+/-	RANK
31	33	13	DON'T RUSH 19/RCA/Columbia Nashville	Kelly Clarkson Featuring Vince Gill	3.928	+0.202	930	61	29
32	43	4	LIKE JESUS DOES EMI Nashville ★★ Breaker ★★	Eric Church	3.402	+1.292	714	264	34
33	37	12	ONLY GOD COULD LOVE YOU MORE Sea Gayle/Arista Nashville	Jerrod Niemann	3.024	+0.100	800	-10	32
34	38	4	WAGON WHEEL Capitol Nashville ★★ Breaker ★★	Darius Rucker	2.995	+0.579	708	100	36
35	41	4	ANYWHERE WITH YOU RCA Nashville	Jake Owen	2.832	+0.589	373	113	43
36	40	17	OUTTA MY HEAD Bigger Picture ★★ Breaker ★★	Craig Campbell	2.482	+0.239	763	41	33
37	39	18	BE GRATEFUL Elektra Nashville/New Revolution	THE FARM	2.384	-0.026	666	10	37
38	42	12	RUNNIN' OUT OF AIR RCA Nashville	Love And Theft	2.120	-0.066	713	-5	35
39	44	15	DON'T YA Atlantic/WMN	Brett Eldredge	1.912	+0.258	519	57	39
40	45	12	I'LL KEEP THE KIDS Average Joes	Montgomery Gentry	1.802	+0.180	586	88	38
41	46	4	ALL OVER THE ROAD Mercury	Easton Corbin	1.793	+0.264	473	104	41
42	48	14	FIND ME A BABY MCA Nashville	Josh Turner	1.551	+0.194	507	24	40
43	47	14	NOBODY'S SAD ON A SATURDAY NIGHT Vanguard/Sugar Hill/EMI Nashville	Uncle Kracker	1.405	-0.126	345	2	44
44	54	4	HEY PRETTY GIRL MCA Nashville	Kip Moore	1.253	+0.487	227	87	49
45	51	9	MOONSHINE ROAD Arista Nashville	Kix Brooks	1.168	+0.109	243	14	48
46	50	3	COULD IT BE Warner Bros./WAR	Charlie Worsham	1.156	+0.076	439	49	42
47	53	9	FOREVER Blaster	Aaron Lewis	0.922	+0.097	344	25	45
48	49	7	BRUISES Columbia/Nine North	Train Featuring Ashley Monroe	0.874	-0.248	199	1	50
49	52	8	HOMETO ME Black River	Sarah Darling	0.848	-0.148	318	1	46
50	60	8	I WILL WAIT Gentleman Of The Road/RED/Glassnote	Mumford & Sons	0.766	+0.384	150	36	52
51	56	7	STARSHINE Curb	Sweetwater Rain	0.634	+0.028	280	17	47
52	58	2	NIGHT TRAIN Broken Bow	Jason Aldean	0.546	+0.026	53	2	58
53	NEW	1	IT'S ALL GOOD Streamsound	Austin Webb	0.423	+0.047	179	31	51
54	59	2	JUMP RIGHT IN Atlantic/Southern Ground	Zac Brown Band	0.329	-0.125	31	-11	-
55	NEW	1	HOW SHE ROLLS Dack Janiels/Artist Revolution	Chase Rice	0.309	+0.073	34	4	-
56	NEW	1	BETTER I DON'T Bigger Picture	Chris Janson	0.268	+0.059	134	54	53
57	NEW	1	HUNGOVER & HARD UP EMI Nashville	Eric Church	0.246	+0.041	38	3	-
58	55	2	KEEP ON EMI Nashville	Eric Church	0.231	-0.389	34	-24	-
59	NEW	1	IF YOU WANT SOME Show Dog-Universal	Joel Crouse	0.224	+0.002	92	19	54
60	RE-ENTRY	2	LOVE YOU FOR A LONG TIME Eaglemont/Rodeowave	High Valley	0.221	-0.055	62	-16	55



the best in music just got better.

introducing the NEW Billboard magazine iPad® edition

AVAILABLE FREE TO CURRENT BILLBOARD SUBSCRIBERS

Playable Billboard Charts . Videos . Photo Galleries . Cover Stories . Special Reports Reviews . Interviews . Event Coverage & MORE



iPad is a trademark of Apple Inc., registered in the U.S. and other countries. App Store is a service mark of Apple Inc.



AIRPLAY
MONITORED BY
nielsen
BDS

COUNTRY

MOST ADDED™

TITLE Imprint/Label	Artist	ADDS
DOWNTOWN Capitol Nashville	Lady Antebellum	46
LIKE JESUS DOES EMI Nashville	Eric Church	24
GET YOUR SHINE ON Republic Nashville	Florida Georgia Line	21
MAMA'S BROKEN HEART RCA Nashville	Miranda Lambert	20
CHANGED Big Machine	Rascal Flatts	19
ANYWHERE WITH YOU RCA Nashville	Jake Owen	11
AMERICAN BEAUTIFUL Arista Nashville	The Henningsens	10
WAGON WHEEL Capitol Nashville	Darius Rucker	9
MORE THAN MILES Valory	Brantley Gilbert	8
ALL OVER THE ROAD Mercury	Easton Corbin	6

MOST INCREASED AUDIENCE

TITLE Imprint/Label	Artist	GAIN (IN MILLIONS)
DOWNTOWN Capitol Nashville	Lady Antebellum	+6.391
EVERY STORM (RUNS OUT OF RAIN) MCA Nashville	Gary Allan	+2.974
SURE BE COOL IF YOU DID Warner Bros./WMN	Blake Shelton	+2.859
BETTER DIG TWO Republic Nashville	The Band Perry	+2.521
ONE OF THOSE NIGHTS Big Machine	Tim McGraw	+2.390
MAMA'S BROKEN HEART RCA Nashville	Miranda Lambert	+2.301
I DRIVE YOUR TRUCK Curb	Lee Brice	+2.285
GET YOUR SHINE ON Republic Nashville	Florida Georgia Line	+1.907
HOPE ON THE ROCKS Show Dog-Universal	Toby Keith	+1.699
TORNADO Capitol Nashville	Little Big Town	+1.673

MOST INCREASED PLAYS

TITLE Imprint/Label	Artist	GAIN
DOWNTOWN Capitol Nashville	Lady Antebellum	+894
SURE BE COOL IF YOU DID Warner Bros./WMN	Blake Shelton	+466
EVERY STORM (RUNS OUT OF RAIN) MCA Nashville	Gary Allan	+462
ONE OF THOSE NIGHTS Big Machine	Tim McGraw	+356
GET YOUR SHINE ON Republic Nashville	Florida Georgia Line	+355
MAMA'S BROKEN HEART RCA Nashville	Miranda Lambert	+354
I DRIVE YOUR TRUCK Curb	Lee Brice	+331
TORNADO Capitol Nashville	Little Big Town	+319
BETTER DIG TWO Republic Nashville	The Band Perry	+298
THE ONLY WAY I KNOW Broken Bow	Jason Aldean With Luke Bryan & Eric Church	+292

COUNTRY INDICATOR

MOST ADDED™

TITLE Imprint/Label	Artist	ADDS
DOWNTOWN Capitol Nashville	Lady Antebellum	46
LIKE JESUS DOES EMI Nashville	Eric Church	16
ANYWHERE WITH YOU RCA Nashville	Jake Owen	13
CHANGED Big Machine	Rascal Flatts	12
GET YOUR SHINE ON Republic Nashville	Florida Georgia Line	11
ALL OVER THE ROAD Mercury	Easton Corbin	11
AMERICAN BEAUTIFUL Arista Nashville	The Henningsens	9
WAGON WHEEL Capitol Nashville	Darius Rucker	8
IF YOU WANT SOME Show Dog-Universal	Joel Crouse	7
MAMA'S BROKEN HEART RCA Nashville	Miranda Lambert	6

MOST INCREASED AUDIENCE

TITLE Imprint/Label	Artist	GAIN (IN MILLIONS)
SURE BE COOL IF YOU DID Warner Bros./WMN	Blake Shelton	+0.188
AMERICAN BEAUTIFUL Arista Nashville	The Henningsens	+0.180
DOWNTOWN Capitol Nashville	Lady Antebellum	+0.114
THE ONLY WAY I KNOW Broken Bow	Jason Aldean With Luke Bryan & Eric Church	+0.095
GET YOUR SHINE ON Republic Nashville	Florida Georgia Line	+0.091
ONE OF THOSE NIGHTS Big Machine	Tim McGraw	+0.085
SOMEBODY'S HEARTBREAK Atlantic/WMN	Hunter Hayes	+0.084
TORNADO Capitol Nashville	Little Big Town	+0.083
LET THERE BE COWGIRLS Bigger Picture	Chris Cagle	+0.081
EVERY STORM (RUNS OUT OF RAIN) MCA Nashville	Gary Allan	+0.079

MOST INCREASED PLAYS

TITLE Imprint/Label	Artist	GAIN
DOWNTOWN Capitol Nashville	Lady Antebellum	+529
SURE BE COOL IF YOU DID Warner Bros./WMN	Blake Shelton	+355
LIKE JESUS DOES EMI Nashville	Eric Church	+282
TORNADO Capitol Nashville	Little Big Town	+237
GET YOUR SHINE ON Republic Nashville	Florida Georgia Line	+230
MAMA'S BROKEN HEART RCA Nashville	Miranda Lambert	+203
ONE OF THOSE NIGHTS Big Machine	Tim McGraw	+195
AMERICAN BEAUTIFUL Arista Nashville	The Henningsens	+190
ANYWHERE WITH YOU RCA Nashville	Jake Owen	+184
I DRIVE YOUR TRUCK Curb	Lee Brice	+166

billboard TOP40



The premier source for trusted radio industry news, analysis and chart info with expert commentary from **MIKE STERN, SEAN ROSS** and **RICH APPEL**, and chart analysis from **GARY TRUST** all sent straight to your inbox every **MONDAY & THURSDAY**

TO ADVERTISE, CONTACT: Allyson Levy • 404-313-1393 Allyson.Levy@billboard.com
TO SUBSCRIBE, VISIT: www.billboard.biz/newsletter



get access to the best in music.
 PRINT, PAD, ONLINE
SUBSCRIBE TODAY



AIRPLAY
MONITORED BY
nielsen
BDS

NEW AND ACTIVE

TITLE Imprint/Label	Artist	TOTAL AUDIENCE	TOTAL STATIONS	ADDS
CHEAT ON YOU Warner Bros./WAR	Big & Rich	0.208	1	1
CAROLINA Stoney Creek	Parmalee	0.129	1	1
FILL IN THE BLANK Republic Nashville	Greg Bates	0.093	0	0
MAYBE SOMEDAY 4 Star/Tenacity	Lonestar	0.078	4	3
REDNECK CRAZY Columbia Nashville	Tyler Farr	0.060	0	0
TWENTY LITTLE ANGELS Little Hannel	Andy Griggs	0.049	0	0

INDICATOR NEW AND ACTIVE

TITLE Imprint/Label	Artist	TOTAL PLAYS	TOTAL STATIONS	ADDS
SHE'S MY KIND OF CRAZY Open Road	Emerson Drive	101	7	1
IF YOU WANT SOME Show Dog-Universal	Joel Crouse	82	8	7
I GOTTA LEAVE YOU FOR ME Spinville	Hannah McNeil	76	5	0
STARSHINE Curb	Sweetwater Rain	73	6	0
LIES Way Out West	Livewire	71	4	1
BETTER I DON'T Bigger Picture	Chris Janson	54	6	4

RECURRENTS

THIS WEEK	TITLE Imprint/Label	Artist	TOTAL AUD. (IN MILLIONS)
1	GOODBYE IN HER EYES Atlantic/Southern Ground	Zac Brown Band	25.844
2	CRUISE Republic Nashville	Florida Georgia Line	22.561
3	KISS TOMORROW GOODBYE Capitol Nashville	Luke Bryan	16.831
4	BEER MONEY MCA Nashville	Kip Moore	15.794
5	TIL MY LAST DAY Valory	Justin Moore	15.786
6	HARD TO LOVE Curb	Lee Brice	13.659
7	THE ONE THAT GOT AWAY RCA Nashville	Jake Owen	13.303
8	BLOWN AWAY 19/Arista Nashville	Carrie Underwood	12.401
9	SPRINGSTEEN EMI Nashville	Eric Church	11.422
10	BEER WITH JESUS Valory	Thomas Rhett	11.329

GOING FOR ADDS

1/28

ANDY GRIGGS
Don't Let Go
Little Hannel

BILLY RAY CYRUS
Hillbilly Heart
Blue Cadillac

BLACKBERRY SMOKE
Pretty Little Lie
Southern Ground

ERIC CHURCH
Like Jesus Does
EMI Nashville

KIP MOORE
Hey Pretty Girl
MCA Nashville

MUSTANG SALLY
Jiggle It A Little
Permian/Triple Crown

2/4

JOEL CROUSE
If You Want Some
Show Dog-Universal

PARMALEE
Carolina
Stoney Creek

ROD RICHMOND
I Got Your Country Right Here
Red White And Blue

2/11

BRINN BLACK
Crushin'
Brinn Black

GREG BATES
Fill In The Blank
Republic Nashville

JAKE OWEN
Anywhere With You
RCA Nashville

2/18

JAIDA DREYER
Half Broke Horses
Streamsound

KRISTEN KELLY
He Loves To Make Me Cry
Arista Nashville

RACHEL FARLEY
Ain't Easy
Red Bow



TEXAS REGIONAL RADIO REPORT

WEEK ENDING JANUARY 27, 2013

THIS WEEK	LAST WEEK	WKS ON CHART	TITLE (Label)	ARTIST	TW SPINS	SPINS +/-	THIS WEEK	LAST WEEK	WKS ON CHART	TITLE (Label)	ARTIST	TW SPINS	SPINS +/-
1	2	12	ILL SING ABOUT MINE (PDT Atlantic WMN) ★★1 week at 1★	Josh Abbott Band	1186	73	16	21	6	KISS ME THAT WAY (Average Joes)	JB and The Moonshine Band	735	50
2	3	11	OBSESSED (Vision)	Jason Boland & The Stragglers	1163	101	17	18	16	THE WEIGHT (Good Time)	Green River Ordinance	734	21
3	5	9	TRAVELIN' KIND (B Side/Vision)	Stoney LaRue	1123	108	18	22	14	IT'S ABOUT TIME (Independent)	William Clark Green	729	72
4	1	15	PENNSYLVANIA AVENUE (No Big Deal)	Reckless Kelly	1025	-138	19	11	21	CRAZY AGAIN (Independent)	Roger Creager	711	-133
5	9	15	WITHOUT YOU (Independent)	The Great Divide	957	58	20	16	15	ME, YOU & EMMYLOU (Independent)	Ray Johnston	695	-56
6	6	20	SAY GOODNIGHT (Republic Nashville)	Eli Young Band	896	-102	21	20	12	RIVERBED (Smith)	Bo Phillips Band	689	-2
7	10	22	THE COLD ONE (Smith)	Mike Ryan	876	12	22	32	4	WRECKED (Vision)	Turnpike Troubadours	687	162
8	8	15	WORTH THE FIGHT (Independent)	Cody Canada & The Departed	862	-39	23	19	23	IN THE MEANTIME (Independent)	Chris Knight	679	-22
9	12	11	LONE STAR HIGHWAY (AMP)	Josh Grider	859	25	24	26	16	CRAZY ENOUGH FOR ME (Independent)	Mario Flores	644	61
10	7	19	SMILE (Independent)	Curtis Grimes	835	-122	25	30	13	SIMPLIFY (Independent)	Thom Shepherd	627	84
11	14	8	LIPS (HTK)	Aaron Watson	832	49	26	23	9	NEVER GONNA BE ENOUGH (Smith)	No Justice	626	18
12	25	4	TROUBLE KNOWS MY NAME (MCA Nashville)	Randy Rogers Band	827	230	27	13	17	EVEN THE LOSERS (Independent)	Pat Green	609	-206
13	17	9	DANDELION (Smith)	Bart Crow Band	811	70	28	28	12	THIS AIN'T THE 60'S (Independent)	Coley McCabe	608	54
14	15	12	WE DO IT IN A FIELD (Independent)	Granger Smith	794	23	29	31	10	SINGLE ROSE KIND OF GIRL (Independent)	John Slaughter	586	44
15	4	18	THE NIGHT IS YOUNG (Independent/Thirty Tigers)	Kyle Park	753	-275	30	24	25	RUNNING (Winding Road)	Phil Hamilton	579	-28

Texas Regional Radio Report Top 100 is compiled from weekly online playlist reports from 89 radio stations located in Texas and surrounding states, including reports from specialty shows, internet and satellite radio outlets. Songs are ranked by total plays. For tracking, complete chart methodology and more information, visit www.texasregionallradio.com, or contact Dave Smith at 817-283-7984. Copyright 2013, Texas Regional Radio Report

billboard Country Indicator

THIS WEEK	LAST WEEK	WKS ON CHART	TITLE Imprint/Label	Artist	PLAYS		AUDIENCE (IN MILLIONS)
					THIS WEEK	+/-	THIS WEEK
1	1	20	EVERY STORM (RUNS OUT OF RAIN) MCA Nashville	Gary Allan	3502	+157	1.167
2	2	13	BETTER DIGTWO Republic Nashville	The Band Perry	3413	+124	1.078
3	4	15	THE ONLY WAY I KNOW Broken Bow	Jason Aldean with Luke Bryan & Eric Church	3265	+125	1.144
4	5	19	SOUTHERN COMFORT ZONE Arista Nashville	Brad Paisley	3087	+21	0.983
5	7	13	ONE OF THOSE NIGHTS Big Machine	Tim McGraw	3058	+195	0.977
6	8	19	TORNADO Capitol Nashville	Little Big Town	3007	+237	0.924
7	6	25	TIP IT ON BACK Capitol Nashville	Dierks Bentley	2955	+35	0.900
8	10	11	TWO BLACK CADILLACS 19/Arista Nashville	Carrie Underwood	2656	+146	0.798
9	3	38	HOW COUNTRY FEELS Stoney Creek	Randy Houser	2584	-680	1.033
10	9	18	BEGIN AGAIN Big Machine	Taylor Swift	2557	+42	0.791
11	12	15	SOMEBODY'S HEARTBREAK Atlantic/WMN	Hunter Hayes	2475	+94	0.733
12	20	4	SURE BE COOL IF YOU DID Warner Bros./WMN	Blake Shelton	2145	+355	0.695
13	13	20	MERRY GO 'ROUND Mercury	Kacey Musgraves	2141	+17	0.524
14	14	16	I CAN TAKE IT FROM THERE RCA Nashville	Chris Young	2116	+93	0.549
15	19	9	I DRIVE YOUR TRUCK Curb	Lee Brice	1981	+166	0.538
16	15	12	HOPE ON THE ROCKS Show Dog-Universal	Toby Keith	1965	+87	0.594
17	16	13	GIVE IT ALL WE GOT TONIGHT MCA Nashville	George Strait	1956	+93	0.579
18	17	14	IF I DIDN'T HAVE YOU Stoney Creek	Thompson Square	1934	+72	0.655
19	21	10	SHE CRANKS MY TRACTOR Broken Bow	Dustin Lynch	1534	+47	0.449
20	23	4	MAMA'S BROKEN HEART RCA Nashville	Miranda Lambert	1529	+203	0.352
21	22	29	LET THERE BE COWGIRLS Bigger Picture	Chris Cagle	1496	+78	0.486
22	RE-ENTRY		CRYING ON A SUITCASE 19/Columbia Nashville	Casey James	1241	+122	0.347
23	24	14	MORE THAN MILES Valory	Brantley Gilbert	1219	+87	0.322
24	27	4	GET YOUR SHINE ON Republic Nashville	Florida Georgia Line	1146	+230	0.334
25	28	4	WAGON WHEEL Capitol Nashville	Darius Rucker	982	+161	0.100
26	31	7	CHANGED Big Machine	Rascal Flatts	887	+131	0.269
27	30	17	CAN'T SHAKE YOU Emblem/Warner Bros./WAR	Gloriana	871	+86	0.183
28	34	7	AMERICAN BEAUTIFUL Arista Nashville	The Henningsens	857	+190	0.254
29	29	12	DON'T RUSH 19/RCA/Columbia Nashville	Kelly Clarkson Feat. Vince Gill	853	+40	0.156
30	25	17	AMERICAN HEART Warner Bros./WAR	Faith Hill	797	-161	0.339

BILLBOARD COUNTRY INDICATOR PANEL — 87 STATIONS

Abilene, Texas	KEAN	Flagstaff, Ariz.	KAFF	Lincoln, Neb.	KFGE	Santa Maria, Calif.	KSNI
Alexandria, La.	KRRV	Florence, Ala.	WXFL	Lubbock, Texas	KLLL	Sheboygan, Wis.	WBFM
Amarillo, Texas	KGNC	Florence, S.C.	WEGX	Lufkin, Texas	KYKS	Sioux City, Iowa	KSUX
Atlantic City, N.J.	WPUR	Ft. Smith, Ark.	KTCS	Mason City, Iowa	KIAI	South Bend, Ind.	WBYT
Beaumont, Texas	KYKR	Frederick, Md.	WFRE	Medford, Ore.	KRWQ	Terre Haute, Ind.	WTHI
Beckley, W. Va.	WJLS	Fredericksburg, Va.	WFLS	Meridian, Miss.	WOKK	Topeka, Kan.	WIBW
Biloxi, Miss.	WZKX	Green Bay, Wis.	WNCY	Morgantown, W. Va.	WKKW	Traverse City, Mich.	WTCM
Bluefield, W. Va.	WHXX	Hagerstown, Md.	WAYZ	Muskegon, Mich.	WMUS	Tupelo, Miss.	WWZD
Burlington, Vt.	WOKO	Hot Springs, Ark.	KQUS	Myrtle Beach, S.C.	WGTR	Tyler, Texas	KYKX
Charleston, W. Va.	WKWS	Huntington, Ky.	WDGG	New London, Conn.	WCTY	Utica, N.Y.	WFRG
College Station, Texas	KAGG	Huntington, W. Va.	WTCR	Odessa, Texas	KHKX	Visalia, Calif.	KJUG
Columbus, Ga.	WKCN	Idaho Falls, Idaho	KTHK	Palm Springs, Calif.	KPLM	Waco, Texas	WACO
Cookeville, Tenn.	WGSQ	Jackson, Miss.	WUSJ	Poughkeepsie, N.Y.	WRWD	Wausau, Wis.	WDEZ
Dothan, Ala.	WTYY	Janesville, Wis.	WJVL	Rapid City, S.D.	KOUT	Wheeling, W. Va.	WOVK
Duluth, Minn.	KKCB	Jonesboro, Ark.	KDXY	Rocky Mount, N.C.	WDWG	Williamsport, Pa.	WILQ
Eau Claire, Wis.	WAXX	Joplin, Mo.	KIXQ	Saginaw, Mich.	WCEN	Yakima, Wash.	KXDD
Elizabeth City, N.C.	WRSF	Kalamazoo, Mich.	WNWN		WKCQ	Youngstown, Ohio	WWGY
Erie, Pa.	WTWF	Kalispell, Mont.	KDBR	Salina, Kan.	KYEZ	Dial Global	HOT COUNTRY
Eugene, Ore.	KKNU	Lafayette, Ind.	WKOA	Salisbury, Md.	WKTT		MAINSTREAM COUNTRY
Evansville, Ind.	WKDQ	Lake Havasu/Bullhead City, Ariz.	KFLG	San Angelo, Texas	KGKL	Music Choice	TODAY'S COUNTRY
Fargo, N.D.	KVOX	Laurel, Miss.	WBBN	San Luis Obispo, Calif.	KKJG	Sirius XM	THE HIGHWAY
Fayetteville, N.C.	WKML	Lebanon, N.H.	WXXX	Santa Barbara, Calif.	KRAZ		

billboard Country Indicator

THIS WEEK	LAST WEEK	WKS ON CHART	TITLE Imprint/Label	Artist	PLAYS		AUDIENCE (IN MILLIONS)
					THIS WEEK	+/-	THIS WEEK
31	32	17	I'LL KEEP THE KIDS Average Joes/New Revolution	Montgomery Gentry	758	+7	0.184
32	35	3	LIKE JESUS DOES EMI Nashville	Eric Church	751	+282	0.089
33	33	12	ONLY GOD COULD LOVE YOU MORE Sea Gayle/Arista Nashville	Jerrod Niemann	676	-17	0.138
34	37	4	ALL OVER THE ROAD Mercury	Easton Corbin	567	+111	0.065
35	38	11	WHISKEY Elektra Nashville/WAR	Jana Kramer	552	+113	0.131
36	NEW		DOWNTOWN Capitol Nashville ★★ Hot Shot Debut/Most Increased Plays/Most Added ★★	Lady Antebellum	529	+529	0.114
37	36	15	HOMETO ME Black River	Sarah Darling	493	+27	0.057
38	39	16	NOBODY'S SAD ON A SATURDAY NIGHT Vanguard/Sugar Hill/EMI Nashville	Uncle Kracker	436	+21	0.002
39	41	16	FIND ME A BABY MCA Nashville	Josh Turner	397	-8	0.033
40	40	9	RUNNIN' OUT OF AIR RCA Nashville	Love And Theft	395	-10	0.033
41	42	20	LOVE YOU FOR A LONG TIME Eaglemont/Rodeowave	High Valley	360	+7	0.005
42	51	2	ANYWHERE WITH YOU RCA Nashville	Jake Owen	327	+184	0.047
43	46	12	SOMEBODY'S BABY Nine North	Lisa Matassa	226	+20	0.006
44	43	14	TELESCOPE ABC Studios/Lions Gate/Big Machine	Hayden Panettiere	226	-69	0.033
45	44	17	OUTTA MY HEAD Bigger Picture	Craig Campbell	224	-4	0.021
46	53	2	COULD IT BE Warner Bros./WAR	Charlie Worsham	204	+64	0.022
47	45	10	I'LL SING ABOUT MINE PDT/Atlantic/WMN	Josh Abbott Band	198	-29	0.000
48	47	11	STANDING IN LINE American Roots	Chris Weaver Band	183	0	0.000
49	50	8	THAT'S WHAT LIFE IS LGR	Taylor Made	182	+13	0.000
50	48	9	HELL AND HALF OF GEORGIA Tenacity	Bill Gentry	170	-2	0.001
51	49	6	DON'T YA Atlantic/WMN	Brett Eldredge	167	-4	0.083
52	56	2	MAYBE SOMEDAY 4 Star/Tenacity	Lonestar	163	+36	0.000
53	NEW		HEY PRETTY GIRL MCA Nashville	Kip Moore	149	+67	0.003
54	RE-ENTRY		IT'S ALL GOOD Streamsound	Austin Webb	147	+22	0.007
55	57	8	STAY WITH ME TONIGHT CVR	Mark Cooke	144	+17	0.013
56	52	11	YOUR OL' LADY'S GONE SSM	Branch & Dean	137	-4	0.000
57	55	9	STOP DROP AND ROLL Lawrence	Tracy Lawrence	131	+2	0.000
58	54	9	REAL GOOD Fox Hill	One Night Rodeo	129	-3	0.000
59	60	2	LIPS HTK/Grassroots	Aaron Watson	128	+3	0.000
60	59	3	BRUISES Columbia/Nine North	Train Feat. Ashley Monroe	125	-2	0.071



get access to the best in music.

PRINT. iPad®. ONLINE
SUBSCRIBE TODAY ↓



CALLOUT AMERICA

WEEK ENDING JANUARY 27, 2013

THIS WEEK	LAST WEEK	TITLE Imprint/Label	Artist	TOTAL PASSION	POSITIVE	INDEX	NEUTRAL	DISLIKE	STRONGLY DISLIKE
1	4	I CANTAKE IT FROMTHERE RCA Nashville	Chris Young	30.3%	76.3%	4.01	18.5%	4.8%	0.5%
2	1	BEGIN AGAIN Big Machine	Taylor Swift	33.3%	75.5%	4.04	20.3%	3.5%	0.8%
3	2	THE ONLY WAY I KNOW Broken Bow	Jason Aldean	32.5%	73.8%	4.01	21.3%	4.8%	0.3%
4	5	EVERY STORM (RUNS OUT OF RAIN) MCA Nashville	Gary Allan	32.5%	72.8%	3.97	20.0%	6.5%	0.8%
5	3	ONE OF THOSE NIGHTS Big Machine	Tim McGraw	29.5%	71.8%	3.92	20.0%	7.5%	0.8%
6	6	GIVE IT ALL WE GOT TONIGHT MCA Nashville	George Strait	27.8%	70.5%	3.92	23.3%	5.8%	0.5%
7	7	MORE TRUCKS THAN CARS Black River	Craig Morgan	24.8%	69.8%	3.86	22.8%	6.5%	1.0%
8	9	CAN'T SHAKE YOU Emblem/Warner Bros/WAR	Gloriana	18.8%	69.8%	3.77	20.3%	8.8%	1.3%
9	10	BETTER DIG TWO Republic Nashville	The Band Perry	26.8%	68.5%	3.80	19.3%	9.5%	2.8%
10	11	CRYING ON A SUITCASE 19/Columbia Nashville	Casey James	22.8%	68.5%	3.83	24.5%	6.0%	1.0%
11	8	TIP IT ON BACK Capitol Nashville	Dierks Bentley	27.3%	68.0%	3.86	23.8%	7.5%	0.8%
12	13	SOUTHERN COMFORT ZONE Arista Nashville	Brad Paisley	24.8%	68.0%	3.83	23.3%	7.8%	1.0%
13	12	AMERICAN HEART Warner Bros/WAR	Faith Hill	21.0%	68.0%	3.78	21.8%	9.5%	0.8%
14	16	MORE THAN MILES Valory	Brantley Gilbert	16.0%	67.5%	3.75	24.5%	7.0%	1.0%
15	14	TORNADO Capitol Nashville	Little Big Town	24.8%	67.3%	3.76	19.5%	10.5%	2.8%
16	15	OUTTA MY HEAD Bigger Picture	Craig Campbell	21.0%	67.3%	3.79	24.5%	7.3%	1.0%
17	19	IF I DIDN'T HAVE YOU Stoney Creek	Thompson Square	18.0%	67.0%	3.74	23.0%	8.5%	1.5%
18	21	LET THERE BE COWGIRLS Bigger Picture	Chris Cagle	22.8%	66.0%	3.73	20.0%	11.8%	2.3%
19	20	CHANGED Big Machine	Rascal Flatts	27.0%	64.5%	3.77	22.5%	11.3%	1.8%
20	26	BE GRATEFUL Elektra Nashville/New Revolution	The Farm	17.8%	64.5%	3.71	25.0%	9.5%	1.0%
21	24	TWO BLACK CADILLACS 19/Arista Nashville	Carrie Underwood	24.3%	64.3%	3.70	20.8%	11.8%	3.3%
22	18	SAY GOODNIGHT Republic Nashville	Eli Young Band	21.8%	64.3%	3.73	24.0%	10.3%	1.5%
23	22	SHE CRANKS MY TRACTOR Broken Bow	Dustin Lynch	19.3%	64.3%	3.66	20.8%	12.3%	2.8%
24	28	HOPE ON THE ROCKS Show Dog-Universal	Toby Keith	27.3%	63.8%	3.72	19.3%	15.0%	2.0%
25	25	TELESCOPE ABC Studios/Lion's Gate/Big Machine	Hayden Panettiere	21.8%	63.5%	3.72	24.8%	10.0%	1.8%
26	17	BEER WITH JESUS Valory	Thomas Rhett	21.8%	63.5%	3.63	18.3%	14.5%	3.8%
27	27	SOMEBODY'S HEARTBREAK Atlantic/WMN	Hunter Hayes	22.5%	63.0%	3.70	23.0%	12.5%	1.5%
28	-	I'LL KEEP THE KIDS Averages Joes	Montgomery Gentry	19.8%	62.8%	3.75	30.3%	6.5%	0.5%
29	29	I DRIVE YOUR TRUCK Curb	Lee Brice	17.3%	62.3%	3.70	29.0%	7.8%	1.0%
30	31	MERRY GO 'ROUND Mercury	Kacey Musgraves	16.8%	61.5%	3.62	24.3%	12.0%	2.3%
31	32	DON'T RUSH 19/RCA/Columbia Nashville	Kelly Clarkson Feat. Vince Gill	19.8%	60.5%	3.59	21.5%	15.0%	3.0%
32	30	AMERICAN BEAUTIFUL Arista Nashville	The Henningsens	14.3%	58.5%	3.58	28.8%	10.5%	2.3%
33	33	RUNNIN' OUT OF AIR RCA Nashville	Love And Theft	15.8%	57.5%	3.58	30.0%	10.0%	2.5%
34	34	ONLY GOD COULD LOVE YOU MORE Sea Gayle/Arista Nashville	Jerrod Niemann	15.0%	55.8%	3.55	29.3%	13.8%	1.3%
35	35	GET YOU SHINE ON Republic Nashville	Florida Georgia Line	11.5%	49.0%	3.43	35.0%	14.0%	2.0%

The Callout America sample is 450 persons in each weekly report. Sample is 50% Male/Female and taken from 20 U.S. Markets. Demos are evenly balanced in 18-24, 25-34, 35-44 and 45-54 cells. Song scores are on a 1 to 5 differential with "1" meaning strong dislike and "5" meaning like it a lot. The positive index is an average of all 1 to 5 scores. Total Positive is the combined 4 and 5 scores. Market breakdowns by geographical region are: MIDWEST: Cincinnati, Indianapolis, Kansas City, Omaha and Wichita. SOUTH: Atlanta, Charleston, Charlotte, Mobile/Pensacola and Nashville. EAST: Philadelphia, Pittsburgh, Providence RI, Rochester, Virginia Beach. WEST: Colorado Springs, Houston, Modesto, Phoenix and Portland OR.

CHART LEGEND

RANKINGS

Country Airplay is ranked by total audience impressions for the week ending Sunday based on monitored airplay of 126 stations by Nielsen BDS. Audience totals on the chart are derived, in part, using certain Arbitron Inc. copyrighted Persons 12+ audience estimates (under license © 2013, Arbitron Inc.). Country Indicator is tabulated using reported playlists and Nielsen BDS-monitored airplay at 87 stations, ranked by total plays.

BULLETS

● Awarded on Country Airplay to titles gaining audience or remaining flat from the previous week. A song will also receive a bullet if its percentage loss in audience does not exceed the percentage of monitored station downtime for the format.

Titles that decline in audience but increase in detections will also receive a bullet if the total audience erosion for the week does not exceed 3%. Bullets are awarded on Country Indicator to titles gaining plays or remaining flat from the previous week.

TIES

On Country Airplay, if two songs are tied in total audience, the song with the larger increase in audience is placed first. On Country Indicator, if two songs are tied in total plays, the song with the larger increase in plays is placed first.

RECURRENTS

On Country Airplay, descending titles below No. 10 in either audience or detections are moved to recurrent after 20 weeks, provided that they are not still

gaining enough audience points to bullet or if they rank below No. 10 and post a third consecutive week of audience decline, regardless of total chart weeks. On Country Indicator, descending, non-bulleted titles below No. 10 are moved to recurrent after 20 weeks.

HOT SHOT DEBUT

Awarded to the highest-ranking new entry on Country Airplay and Country Indicator, respectively.

MOST ADDED

The total number of new adds officially reported to Billboard by each reporting station, or by an automatic-add threshold (seven plays for the first time in a chart tracking week, according to Nielsen BDS) for stations that do not report adds.

MOST INCREASED AUDIENCE/PLAYS

Most Increased Audience on Country Airplay and Most Increased Plays on Country Indicator list the songs with the greatest week-to-week increases in total audience or plays, respectively.

AIRPOWER

Awarded on Country Airplay to titles ranking inside top 20 in plays and audience rankings for the first time, with increases in both plays and audience.

BREAKER

Awarded on Country Airplay to titles achieving airplay (at least one detection) at 60% of reporting stations for the first time.

billboard Country Airplay Index

TITLE Publishing-Licensing Org.
(Songwriter) **Chart Position**

A

ALL OVER THE ROAD Carson Chamberlain Music, BMI/BMG Rights Management (US) LLC, ASCAP/External Combustion Music, ASCAP/Out Of The Taperoom Music, ASCAP/Songs Of Southside Independent Music Publishing, L.(B.Edredge, C.DeStefano, A.Gorley) **39**

AMERICAN BEAUTIFUL EMI Blackwood Music Inc., BMI/Rainbow Skyline Music, BMI/Cactus Moser Music, BMI/Indy Grab Music, BMI/Do Write Music, LLC, BMI (A.Henningsen, B.Henningsen, C.Henningsen, B.Beavers) **29**

AMERICAN HEART BMG Gold Songs, ASCAP/Glassbean, ASCAP/We Jam Writers Group, ASCAP/BMG Rights Management (US) LLC, ASCAP/Sony/ATV Tree Publishing, BMI/Beavertime Tunes, BMI (J.Singleton, J.Beavers) **26**

ANYWHERE WITH YOU WB Music Corp., ASCAP/Melissa's Money Music Publishing, ASCAP/Get A Load Of This Music, ASCAP/Old Desperados, LLC, ASCAP/NZD Publishing Company, Inc., ASCAP/Carol Vincent And Associates, LLC, ASCAP/EMI Blackwood Music Inc., BMI/Beattyville Music, BMI/Great Day At This Time Music, BMI (B.Hayslip, D.L.Murphy, J.Young) **35**

B

BEGIN AGAIN Sony/ATV Tree Publishing, BMI/Taylor Swift Music, BMI (T.Swift) **8**

BE GRATEFUL WB Music Corp., ASCAP/Erin's Dream Music, BMI/Crazy Blue Egg, ASCAP/Big Red Toe, BMI/Amarillo Sky Songs, BMI (M.Beeson, R.Clawson) **37**

BETTER DIG TWO Tunes Of Bigger Picture, ASCAP/Vista Loma Music, ASCAP/Crazy Water Music, ASCAP/Little Blue Egg, ASCAP/ReHits Music, Inc., ASCAP/Kobalt Music Publishing America, Inc., ASCAP/Unfair Entertainment, ASCAP (B.Clark, S.McAnally, T.Rosen) **3**

BETTER I DON'T Red Vinyl Music, BMI/Buckkilla Music, BMI/Curb Songs, ASCAP/Kelly Roland Music, ASCAP/Pat Price Music, BMI (C.Janson, K.Roland, P.Bunch) **56**

BRUISES EMI April Music, Inc., ASCAP/Ptimon Music, ASCAP/Stellar Songs Ltd., PRS (P.T.Monahan, E.Lind, A.Bjorklund) **48**

C

CAN'T SHAKE YOU Gossin Music Publishing, ASCAP/Echometrics, ASCAP/FruFru Music, BMI/BJP Administration, BMI/EMI Blackwood Music Inc., BMI/Jamesslatermusic, BMI (T.Gossin, S.Bentley, J.T.Slater) **28**

CHANGED Sony/ATV Cross Keys Publishing, ASCAP/BMG Gold Songs, ASCAP/We Jam Writers Group, ASCAP/BMG Chrysalis Music Publishing, BMI/Songs Of Peer, BMI/Warner-Tamerlane Publishing Corp., BMI/Boatwright Baby, BMI (G.Levox, N.Thresher, W.Mobley) **30**

COULD IT BE Purple Cape Music, BMI/Dad's Retirement Songs, BMI/Black To Black Songs, BMI/Hope Momma's Listening Music, BMI (C.Worsham, R.Tyndell, M.Dodson) **46**

CRYING ON A SUITCASE Writers Of Sea Gayle Music, BMI/EMI Blackwood Music Inc., BMI/Little Doey Music, BMI/Songs Of Peer Ltd., ASCAP/Team Thrash, ASCAP (L.T.Miller, T.Shapiro, N.Thresher) **15**

D

DON'T RUSH Tiltawhirl Music, BMI/Carnival Music Group, BMI/Bluewater Music Services Corporation, BMI/Lindsay Dawn Chapman, ASCAP (B.Sanders, N.Hemby, L.D.Chapman) **31**

DON'T YA Paris Not France Music, BMI/Dwight Wiles And Co., BMI/EMI April Music, Inc., ASCAP/Sugar Glider Music, ASCAP/External Combustion Music, ASCAP/Out Of The Taperoom Music, ASCAP/Songs Of Southside Independent Music Publishing, L.(B.Edredge, C.DeStefano, A.Gorley) **39**

DOWNTOWN Songs Of Universal, Inc., BMI/Creative Nation Music, BMI/Twain And Slangin Songs, BMI/Crazy Water Music, ASCAP/Smack Songs LLC, ASCAP/Kobalt Music Publishing America, Inc., ASCAP/EMI Blackwood Music Inc., BMI/Wruckestrike, BMI (L.Laird, S.McAnally, N.Hemby) **25**

E

EVERY STORM (RUNS OUT OF RAIN) Crystal Beach Music, BMI/Third Tier Music LLC, BMI/Always Alone Songs, ASCAP/Kobalt Music Publishing America, Inc., ASCAP/Raylene Music, ASCAP/BMG Rights Management (US) LLC, ASCAP (G.Allan, M.Warren, H.Lindsey) **1**

F

FIND ME A BABY Songs Of Universal, Inc., BMI/Otis Music, BMI/House Of Sea Gayle Music, ASCAP (J.Turner, F.Rogers) **42**

FOREVER WB Music Corp., ASCAP/Greenfund Music, ASCAP (A.Lewis) **47**

G

GET YOUR SHINE ON Big Loud Mountain, BMI/Big Red Toe, BMI/Amarillo Sky Songs, BMI/Angel River Songs, ASCAP (T.Hubbard, B.Kelley, R.Clawson, C.Tompkins) **23**

GIVE IT ALL WE GOT TONIGHT Delberts Boy Music, ASCAP/Sixteen Stars Music, BMI/Rooster Pecked Music, BMI/HoriPro Entertainment Group, Inc., BMI/Warner-Tamerlane Publishing Corp., BMI/T-Bird's Music, BMI (M.Bright, P.O'Donnell, T.James) **19**

H

HEY PRETTY GIRL Music Of Stage Three, BMI/Songs Of Comman, BMI/Roll Through Music, BMI/BMG Chrysalis Music Publishing, BMI/Songs From The Couch, BMI (K.Moore, D.Couch) **44**

HOME TO ME Music Of Stage Three, BMI/Songs Of Comman, BMI/BMG Rights Management, BMI/EMI Foray Music, SESAC/Turning Twenties Music, LLC, SESAC/Dollarsandpense Music, LLC, SESAC (C.Smith, B.Hamrick) **49**

HOPE ON THE ROCKS Tokeco Tunes, BMI (T.Keith) **21**

HOW COUNTRY FEELS Warner-Tamerlane Publishing Corp., BMI/Boatwright Baby, BMI/February 4 Music, BMI/Peermusic III, Ltd., BMI/Songs Of Peer Ltd., ASCAP/Team Thrash, ASCAP (M.McGehee, W.Mobley, N.Thresher) **4**

HOW SHE ROLLS Not Listed (Not Listed) **55**

HUNGOVER & HARD UP Sony/ATV Tree Publishing, BMI/Sinnerlina Music, BMI/Universal Music - Careers, BMI/High Powered Machine Music, BMI (E.Church, L.Laird) **57**

I

I CAN TAKE IT FROM THERE Runnin' Behind Publishing, ASCAP/EMI April Music, Inc., ASCAP/Rhettneck Music, BMI/EMI Blackwood Music Inc., BMI/WB Music Corp., ASCAP/Melissa's Money Music Publishing, ASCAP/Get A Load Of This Music, ASCAP (C.Young, R.Akins, B.Hayslip) **18**

I DRIVE YOUR TRUCK Vistaville Music, ASCAP/Happy Tears Music, ASCAP/EMI Blackwood Music Inc., BMI/Watch This Girl Publishing, BMI/Great Day At This Time Music, BMI/Beattyville Music, BMI (J.Alexander, C.Harrington, J.Young) **14**

IF I DIDN'T HAVE YOU Legends Of Magic Mustang Music, SESAC/Barragina Music, SESAC/Sony/ATV Cross Keys Publishing, ASCAP/Becky's Boy Music, ASCAP/Sony/ATV Tree Publishing, BMI (S.Thompson, K.Thompson, J.Sellers, P.Jenkins) **17**

IF YOU WANT SOME Stafford Road Music, BMI/Happy Cake Music, ASCAP/Songs Of Universal, Inc., BMI/Creative Nation Music, BMI/Twain And Slangin Songs, BMI (J.Crouse, J.Houston, L.Laird) **59**

I'LL KEEP THE KIDS Plowin Ground Music, BMI/Average ZJS Music Publishing, BMI/EMI Blackwood Music Inc., BMI/Tune Pang Music, BMI/Sixteen Stars Music, BMI/Rooster Pecked Music, BMI (E.Montgomery, J.Dean, P.O'Donnell) **40**

IT'S ALL GOOD Red Vinyl Music, BMI/Creating Sound Music, BMI/Songs MP, BMI/Songs Of Sunset Beach, BMI (A.Webb, J.Mitchell) **53**

I WILL WAIT Universal Tunes, SESAC (Mumford & Sons) **50**

J

JUMP RIGHT IN Weimerhound Music, BMI/Lit Dub Music, BMI/Angelika Music, BMI/Goo Eyed Music, ASCAP (Z.Brown, W.Durrette, J.Mraz) **54**

K

KEEP ON Sony/ATV Tree Publishing, BMI/Sinnerlina Music, BMI/Purple Cape Music, BMI/ole, BMI (E.Church, R.Tyndell) **58**

L

LET THERE BE COWGIRLS Tunes Of Bigger Picture, ASCAP/Songs Of Category 5, SESAC/Do Write Music, LLC, BMI/Tunes Of RPM, SESAC (C.Cagle, K.Tribble) **16**

LIKE JESUS DOES Sony/ATV Acuff Rose Music, BMI/Six Ring Circus Songs, BMI/Sony/ATV Tree Publishing, BMI (C.Beathard, M.Criswell) **32**

LOVE YOU FOR A LONG TIME Centricity Music Publishing, ASCAP/Big Brave Bendito, SESAC/Pickin Publishing, BMI/Songs Of Kickingbird, BMI/Bug Music, Inc., BMI (J.Crump, B.Stennis, B.Rempel) **60**

M

MAMA'S BROKEN HEART Tunes Of Bigger Picture, ASCAP/Bigger Picture Group, LLC, ASCAP/Vista Loma Music, ASCAP/Crazy Water Music, ASCAP/Kobalt Music Publishing America, Inc., ASCAP/Little Blue Egg, ASCAP/Warner-Tamerlane Publishing Corp., BMI/351 Music, BMI (B.Clark, S.McAnally, K.Musgraves) **20**

MERRY GO 'ROUND Warner-Tamerlane Publishing Corp., BMI/351 Music, BMI/Want A Fresh One Music, ASCAP/Black River Entertainment LLC, ASCAP/Universal Music Corporation, ASCAP/Smack Ink, ASCAP (K.Musgraves, J.Osborne, S.McAnally) **13**

MOONSHINE ROAD Sony/ATV Tree Publishing, BMI/Buffalo Prairie Songs, BMI/Leslie Satcher Music, BMI (K.Brooks, L.Satcher) **45**

MORE THAN MILES WB Music Corp., ASCAP/John Eddie Music, ASCAP/Warner-Tamerlane Publishing Corp., BMI/Indiana Angel Music, BMI (J.Eddie, B.Gilbert) **24**

N

NIGHT TRAIN Songs Of Peer Ltd., ASCAP/BMG Gold Songs, ASCAP/BMG Rights Management (US) LLC, ASCAP/We Jam Writers Group, ASCAP/Warner-Tamerlane Publishing Corp., BMI/Desert Treasure Music, BMI (N.Thresher, M.Dulaney) **52**

NOBODY'S SAD ON A SATURDAY NIGHT Warner-Tamerlane Publishing Corp., BMI/Gaje Music, BMI/Universal Music Corporation, ASCAP/Smack Ink, ASCAP/Smack Songs LLC, ASCAP/Little Blue Egg, ASCAP/Songs Music Publishing, LLC, BMI/Mighty Seven Music Publishing LLC, BMI/Songs Of SMP, ASCAP/Mighty Seven, ASCAP/Heavy Metal Disco, ASCAP (M.Shafer, S.McAnally, J.T.Harding, R.Palmer) **43**

O

ONE OF THOSE NIGHTS Universal Music - Careers, BMI/Big Red Toe, BMI/Amarillo Sky Songs, BMI/Big Loud Songs, ASCAP/Big Loud Bucks, BMI/Angel River Songs, ASCAP (L.Laird, R.Clawson, C.Tompkins) **6**

ONLY GOD COULD LOVE YOU MORE Writers Of Sea Gayle Music, BMI/Words & Music, BMI/Ozworth Music, BMI/Mike Curb Music, BMI/Sweet Hysteria Music, BMI/How Bout That Skyline Music, BMI/Songs From Ferry Street, BMI/BMG Chrysalis Music Publishing, BMI (J.L.Nieman, L.Brice, J.Stone) **33**

THE ONLY WAY I KNOW Old Desperados, LLC, ASCAP/Carol Vincent And Associates, LLC, ASCAP/NZD Publishing Company, Inc., ASCAP/WB Music Corp., ASCAP/Get A Load Of This Music, ASCAP (D.L.Murphy, B.Hayslip) **2**

OUTTA MY HEAD Sony/ATV Tree Publishing, BMI/Songs Of Red Bandana, BMI/Sony/ATV Cross Keys Publishing, ASCAP/243 Music, ASCAP (C.Swindell, R.M.Carter, B.Kinney) **36**

R

RUNNIN' OUT OF AIR Songs Of Brims, ASCAP/Kobalt Music Publishing America, Inc., ASCAP/Crazy Water Music, ASCAP/Little Blue Egg, ASCAP/Want A Fresh One Music, ASCAP/Black River Entertainment LLC, ASCAP (M.Jenkins, S.McAnally, J.Osborne) **38**

S

SHE CRANKS MY TRACTOR Big Music Machine, BMI/Golden Gears Music, BMI/Chrysalis One Songs, BMI/BMG Rights Management (Ireland) Limited, IMRO/BMG Rights Management (US) LLC, ASCAP/Chestnut Barn Music, BMI/Warner-Tamerlane Publishing Corp., BMI/Contentment Music, BMI/Made For This Music, BMI (D.Lynch, B.Beavers, T.Nichols) **22**

SOMEBODY'S HEARTBREAK Songs Of Universal, Inc., BMI/Universal Music - Careers, BMI/High Powered Machine Music, BMI/Happy Little Man Publishing, BMI (A.Dorff, L.Laird, H.Hayes) **11**

SOUTHERN COMFORT ZONE House Of Sea Gayle Music, ASCAP/EMI April Music, Inc., ASCAP/Didn't Have To Be Music Publishing, ASCAP (B.Paisley, C.DuBois, J.K.Lovelace) **5**

STARSHINE GMG Publishing LLC, BMI/Rowandale, BMI (A.L.Smith, R.Harrington) **51**

SURE BE COOL IF YOU DID Big Red Toe, BMI/Amarillo Sky Songs, BMI/Big Loud Bucks, BMI/Big Loud Songs, ASCAP/Play Animal, ASCAP/Extraordinary Alien Publishing, ASCAP (R.Clawson, C.Tompkins, J.Robbins) **12**

T

TIP IT ON BACK Magic Mustang Music Inc., BMI/EMI Blackwood Music Inc., BMI/Ross Copperman Songs, BMI/4 Tunes Music Publishing Limited, BMI/EMI April Music, Inc., ASCAP/Jon Mark Nite Music, ASCAP (T.Kennedy, R.Copperman, J.M.Nite) **7**

TORNADO EMI Blackwood Music Inc., BMI/Wruckestrike, BMI/San Remo Live Ltd., BMI/Songs Of Kobalt Music Publishing America, Inc., BMI (N.Hemby, D.Maid) **9**

TWO BLACK CADILLACS Carrie-Okie Music, BMI/Global Dog Music, ASCAP/Words & Music, ASCAP/Lunlight Music, ASCAP/Raylene Music, ASCAP/BMG Chrysalis, ASCAP (C.Underwood, J.Xear, H.Lindsey) **10**

W

WAGON WHEEL Special Rider Music, SESAC/Blood Donor Music, BMI (B.Dylan, K.Secor) **34**

WHISKEY Ink Pen Mama Music, SESAC/Songs Of Maxx Publishing, SESAC/Tunes Of R&I Direct, SESAC/Razor & Tie Publishing, LLC, SESAC/Be My Lamb Music, BMI/On Like A Neckbone Music, BMI/Simpleville Music, BMI (C.Grafft, S.Mizell) **27**