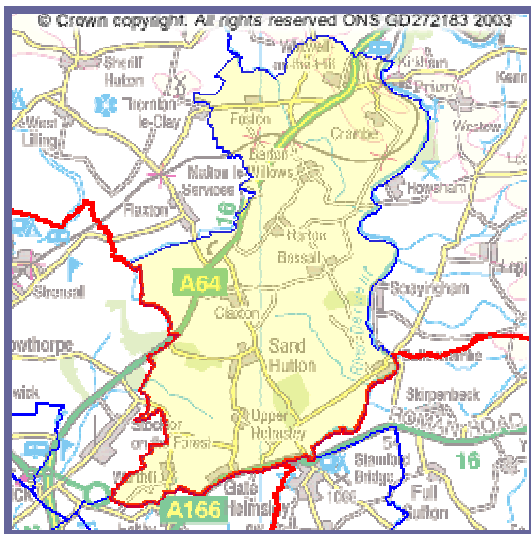


# Ryedale District Council Ward Profile

## Ryedale South West



Performance Management Unit  
Version 1.2 - May 2007

# Contents

<b>INTRODUCTION .....</b>	<b>3</b>
<b>GENERAL DESCRIPTION.....</b>	<b>4</b>
<b>DEMOGRAPHIC PROFILE .....</b>	<b>5</b>
<b>ECONOMIC PROFILE.....</b>	<b>7</b>
Employment .....	7
Economic Activity.....	7
<b>SOCIAL PROFILE.....</b>	<b>10</b>
Housing & Households .....	10
Safety .....	14
Leisure & Cultural Facilities .....	17
Community Services & Facilities .....	17
Education .....	18
Health & Social Care.....	19
Transport .....	20
<b>ENVIRONMENTAL PROFILE .....</b>	<b>21</b>
Conservation .....	21
Development .....	23
Waste & Recycling.....	24
<b>POLITICAL PROFILE .....</b>	<b>25</b>

# Introduction

Ryedale is a predominantly rural area covering some 575 square miles (148,900 hectares) in North Yorkshire. Geographically, the largest district in North Yorkshire, Ryedale comprises a rich agricultural area, as well as including part of the North York Moors National Park. The district population 50,872 (2001 Census) is centred mainly in the twin towns of Malton and Norton, where the administration centre has been established, and the market towns of Pickering, Kirkbymoorside and Helmsley.

The resident population of Ryedale, as measured in the 2001 Census, was 50,872, of which 49 per cent were male and 51 per cent were female.

## Population

	Ryedale	England and Wales
<b>Under 16</b>	18.6%	20.2%
<b>16 to 19</b>	4.3%	4.9%
<b>20 to 29</b>	8.3%	12.6%
<b>30 to 59</b>	42.1%	41.5%
<b>60 to 74</b>	17.1%	13.3%
<b>75 and over</b>	9.6%	7.6%
<b>Average age</b>	42.5 years	38.6 years

Source: 2001 Census, Office for National Statistics

Ryedale is divided into twenty wards, made up from 115 parishes, and a profile is available for each ward.

Amotherby	Helmsley	Norton West	Sherburn
Ampleforth	Hovingham	Pickering East	Sheriff Hutton
Cropton	Kirkbymoorside	Pickering West	Sinnington
Dales	Malton	Rillington	Thornton Dale
Derwent	Norton East	Ryedale South West	Wolds

*Please note that the information published in this document is from various sources and taken at different points in time and therefore may show some inconsistencies. Some of the Census Statistics have been randomly adjusted to avoid the release of confidential data and may not sum due to rounding.*

# General Description

## Ryedale South West Ward

This ward consists of rolling farmland, heavily wooded in places, leading on to the Vale of York.

Aldby Park is a typical Early Georgian house dating to 1726. In the grounds of the Park are the remains of a motte-and-bailey castle. Bossall Hall, with moat, is of Georgian brick but with Elizabethan or Jacobean chimneybreasts. Bromfield Hall at Warthill, built around 1800, has a handsome circular entrance hall with a flying staircase. Thomas Shepard was married at Bossall in 1632 before going to America to help found Harvard University.

All Saints, Foston, has a Norman doorway which is 'uncommonly fancifully and crisply decorated' (Pevsner, 1966). St Michael, Crambe, has an early Norman nave and chancel.

The settlements that make up the ward show a typical mixture of Old English (OE) and Old Scandinavian (OScand) derived place names, many of them traceable to the Domesday Book (DB):

<b>Barton-le-Willows</b>	Barley farm or outlying grange where corn is stored (OE)
<b>Bossall</b>	Probably nook of land of a man called Bot or Botsige (OE) ( <i>Bosciale</i> 1086 DB)
<b>Claxton</b>	Farmstead on a hill or of a man called Klakkr (OE/OScand) ( <i>Claxtorp</i> 1086 DB)
<b>Crambe</b>	Place at the river bends (OE) ( <i>Crambom</i> 1086 DB)
<b>Foston</b>	Farmstead or village of a man called Fotr (OScand)
<b>Gate Helmsley</b>	Island, or dry ground in marsh, of a man called Hemele ( <i>Gatehemelsay</i> 1438)
<b>Harton</b>	Farmstead by the rocks or stones (OE) ( <i>Heretune</i> 1086 DB)
<b>Sand Hutton</b>	Farmstead on or near a ridge or hill spur (OE)
<b>Upper Helmsley</b>	Island, or dry ground in marsh, of a man called Hemele ( <i>Hamelsec(h)</i> 1086 DB)
<b>Warthill</b>	Watch or look-out hill (OE) ( <i>Wardhilla</i> 1086 DB)
<b>Whitwell-on-the-Hill</b>	White spring or stream (OE)

Ryedale South West Ward comprises the following parishes:

Barton-le-Willows	Foston	Upper Helmsley
Buttercrambe with Bossall	Gate Helmsley	Warthill
Claxton	Harton	Whitwell-on-the-Hill
Crambe	Sand Hutton	

# Demographic Profile

## Resident Population and Age

The resident population of Ryedale South West, as measured in the 2001 Census, was 1,628 of which 49 per cent were male and 51 per cent were female. The resident population of Ryedale was 50,872, of which 49 per cent were male and 51 per cent were female.

### Resident population

	Ryedale South West	Ryedale	England and Wales
<b>Under 16</b>	18.2%	18.6%	20.2%
<b>16 to 19</b>	2.9%	4.3%	4.9%
<b>20 to 29</b>	6.1%	8.3%	12.6%
<b>30 to 59</b>	46.1%	42.1%	41.5%
<b>60 to 74</b>	17.1%	17.1%	13.3%
<b>75 and over</b>	9.6%	9.6%	7.6%
<b>Average age</b>	43.9 years	42.5 years	38.6 years

Source: 2001 Census, Office for National Statistics

### Population figures by gender

<b>Male Residents</b>	803	49.3%
<b>Female Residents</b>	825	50.7%

Source: Census 2001

### Marital Status - Resident population aged 16 and over

	Ryedale South West	Ryedale	England and Wales
<b>Single (never married)</b>	18.2%	22.8%	30.1%
<b>Married or re-married</b>	64.7%	59.0%	50.9%
<b>Separated</b>	1.5%	2.0%	2.4%
<b>Divorced</b>	6.7%	7.1%	8.2%
<b>Widowed</b>	8.9%	9.1%	8.4%

Source: 2001 Census, ONS

### Ethnic Group - Resident population

	Ryedale South West	Ryedale	England
<b>White</b>	100.0%	99.4%	90.9%
<b>Mixed</b>	0.0%	0.3%	1.3%
<b>Asian or Asian British</b>	0.0%	0.1%	4.6%
<b>Indian</b>	0.0%	0.0%	2.1%
<b>Pakistani</b>	0.0%	0.0%	1.4%
<b>Bangladeshi</b>	0.0%	0.0%	0.6%
<b>Other Asian</b>	0.0%	0.0%	0.5%
<b>Black or Black British</b>	0.0%	0.1%	2.1%
<b>Caribbean</b>	0.0%	0.0%	1.1%
<b>African</b>	0.0%	0.0%	1.0%
<b>Other Black</b>	0.0%	0.0%	0.2%
<b>Chinese or Other Ethnic Group</b>	0.0%	0.2%	0.9%

Source: 2001 Census, ONS

## Religion - Resident population

	Ryedale South West	Ryedale	England and Wales
<b>Christian</b>	82.0%	82.3%	71.8%
<b>Buddhist</b>	0.0%	0.1%	0.3%
<b>Hindu</b>	0.0%	0.0%	1.1%
<b>Jewish</b>	0.2%	0.0%	0.5%
<b>Muslim</b>	0.0%	0.1%	3.0%
<b>Sikh</b>	0.0%	0.0%	0.6%
<b>Other religions</b>	0.0%	0.2%	0.3%
<b>No religion</b>	11.1%	10.7%	14.8%
<b>Religion not stated</b>	6.7%	6.6%	7.7%

Source: 2001 Census, ONS

## Students and Qualifications - Students and schoolchildren aged 16 to 74

	Ryedale South West	Ryedale	England and Wales
<b>Total number of full-time students and schoolchildren aged 16 to 74</b>	39	1,630	2,648,992
<b>Percentage of total resident population</b>	2.4%	3.2%	5.1%
<b>Total number aged 16 to 17</b>	26	1,033	1,014,284
<b>Total number aged 18 to 74</b>	13	597	1,634,708

Note: Students and schoolchildren were counted at their term-time address.

Source: 2001 Census, ONS

## Resident population aged 16 to 74

	Ryedale South West	Ryedale	England and Wales
<b>Had no qualifications</b>	24.2%	30.5%	29.1%
<b>Qualified to degree level or higher</b>	26.3%	19.3%	19.8%

Source: 2001 Census, ONS

# Economic Profile

## Employment

### Employee Jobs

2005	Ryedale (employee jobs)	Ryedale (%)	Yorkshire and The Humber (%)	Great Britain (%)
Total employee jobs	27,300	-	-	-
Full-time	19,700	71.9	66.1	67.9
Part-time	7,700	28.1	33.9	32.1
<b>Employee jobs by industry</b>				
Manufacturing	5,100	18.8	13.8	11.1
Construction	1,500	5.5	5.1	4.6
Services	19,400	70.9	79.9	82.9
Distribution, hotels & restaurants	5,000	18.4	24.0	24.1
Transport & communications	5,300	19.3	6.0	6.0
Finance, IT, other business activities	2,700	10.0	17.1	20.7
Public admin, education & health	4,700	17.4	28.2	26.9
Other services	1,600	5.7	4.7	5.2
Tourism-related†	3,400	12.4	7.8	8.1

Source: ONS annual business inquiry employee analysis

- Data unavailable

† Tourism consists of industries that are also part of the services industry

Notes: % is a proportion of total employee jobs

Employee jobs excludes self-employed, government-supported trainees and HM Forces

## Economic Activity

### Economic Activity - Resident population aged 16 to 74

	Ryedale South West	Ryedale	England and Wales
<b>Employed</b>	69.4%	64.8%	60.6%
<b>Unemployed</b>	2.0%	2.1%	3.4%
<b>Economically active full-time students</b>	1.5%	1.6%	2.6%
<b>Retired</b>	15.2%	17.3%	13.6%
<b>Economically inactive students</b>	1.8%	3.0%	4.7%
<b>Looking after home/family</b>	6.1%	5.8%	6.5%
<b>Permanently sick or disabled</b>	3.2%	3.5%	5.5%
<b>Other economically inactive</b>	0.8%	2.0%	3.1%

Source: 2001 Census, ONS

### Economic Activity – Male/Female

	Male		Female	
	Number	%	Number	%
<b>Full Time Employees</b>	260	44.7	156	26.5
<b>Part Time Employees</b>	27	4.6	138	23.4
<b>Self Employed</b>	163	28.0	71	12.1
<b>Unemployed/On Govt scheme</b>	13	2.2	11	1.9
<b>Full Time Students</b>	9	1.6	9	1.5
<b>Economically Active</b>	472	81.1	385	65.4
<b>Population Aged 16 - 74</b>	582		589	

Source: Census 2001

Within Ryedale South West, 29 per cent of those unemployed were aged 50 and over, 0 per cent had never worked and 17 per cent were long term unemployed.

Source: 2001 Census, ONS

### Economically Inactive

Out of a total of 110 economically inactive males – 67.3% (74) are retired, this compares with 204 economically inactive females – 31.1% (105) of which are retired

Source: Census 2001

### Economic Inactivity – Male/Female

	Male		Female	
	Number	%	Number	%
<b>Retired</b>	74	12.7	105	17.8
<b>Students</b>	10	1.7	11	1.9
<b>Looking after home/family</b>	0	0.0	70	11.9
<b>Permanently sick/disabled</b>	26	4.5	11	1.9
<b>Other Inactive</b>	0	0.0	7	1.2
<b>Economically Inactive</b>	110	18.9	204	34.6
<b>Population Aged 16 – 74</b>	582		589	

Source: Census 2001

### Employment Opportunities

There are no major employers in this ward.



## Employment Types

	Ryedale South West Ward Male	Ryedale South West Ward Female	Ryedale (M&F)	North Yorkshire (M&F)	England & Wales (M&F)
Agric./Hunting/Forest	16.3%	5.9%	9.6%	5.2%	1.5%
Fishing	0.7%	0%	0.2%	0.1%	0.0%
Mining & Quarrying	0.0%	0%	0.4%	0.7%	0.3%
Manufacturing	14.8%	7.0%	16.2%	12.7%	15.0%
Electric, Gas & Water Supply	1.1%	0.8%	0.4%	0.7%	0.7%
Construction	10.0%	2.2%	6.9%	6.7%	6.8%
Wholesale & Retail Trade; Repair of Motor Vehicles	15.9%	15.1%	16.5%	16.4%	16.8%
Hotels & Catering	3.7%	8.6%	6.4%	6.6%	4.8%
Transport Storage & Communications	4.6%	4.3%	4.7%	4.7%	7.0%
Financial Intermediation	2.4%	1.9%	1.9%	3.2%	4.7%
Real Estate; Renting & Business Activities	15.7%	12.1%	9.1%	10.2%	13.0%
Public Administration & Defence	2.8%	4.0%	4.1%	8.5%	5.7%
Education	4.3%	10.8%	7.4%	7.8%	7.8%
Health & Social Work	3.7%	21.0%	9.3%	11.3%	10.8%
Other	4.1%	6.5%	6.7%	5.1%	5.2%

Source: Census 2001

## Average Earnings

The average annual gross full time earnings in Ryedale are:

Male £20,530 (£394.8 per week)

Female £15,480 (£297.7 per week) Source: [nomisweb.co.uk/Earnings report 2006](http://nomisweb.co.uk/Earnings_report_2006)

## Hours Worked

The majority (40.4%) of working males in this ward have a working week of between 38 and 48 hours compared with the majority (32.4%) of females working between 16 and 30 hours per week.

Hours Worked	As a percentage of workforce	
	Male	Female
Part Time 1 – 5	0.7%	2.1%
Part Time 6 - 15	3.3%	15.0%
Part Time 16 - 30	8.3%	32.4%
Full Time 31 - 37	8.3%	15.0%
Full Time 38 - 48	40.4%	27.9%
Full Time 49 or more	39.1%	7.5%

Source: Census 2001

## VAT Registered Businesses

The percentage figures represent the percentage of stock (at end of year). 2005	Ryedale (numbers)	Ryedale (%)	Yorkshire and The Humber (%)	Great Britain (%)
Registrations	205	6.6	9.5	9.7
Deregistrations	180	5.8	8.1	8.3
Stock (at end of year)	3,100	-	-	-

Source: DTI Small Business Service - vat registrations/deregistrations by industry

## Social Profile

Of the 710 properties that are situated within the ward of Ryedale South West, the following table details the number of properties in each Council Tax Band.

	<b>Band A</b>	<b>Band B</b>	<b>Band C</b>	<b>Band D</b>	<b>Band E</b>	<b>Band F</b>	<b>Band G</b>	<b>Band H</b>	<b>Total</b>
<b>Ryedale South West</b>	18	76	142	90	125	148	101	10	710
<b>Ward %</b>	3%	11%	20%	13%	18%	21%	14%	1%	100%
<b>Ryedale</b>	2174	5694	5380	3937	3102	1885	1118	101	23391
<b>Ryedale %</b>	9%	24%	23%	17%	13%	8%	5%	0%	100%

Source: Ryedale DC, Council Tax Database, April 2007

## Housing & Households

In Ryedale South West there were 649 households in 2001. 97.7 per cent of the resident population lived in households. The remainder of the population lived in communal establishments. The number of households in Ryedale was 21,451.

### Number of households

	<b>Ryedale South West</b>	<b>Ryedale</b>	<b>England and Wales</b>
<b>One person households</b>	19.7%	27.0%	30.0%
<b>Pensioners living alone</b>	10.8%	16.0%	14.4%
<b>Other All Pensioner households</b>	13.0%	13.2%	9.4%
<b>Contained dependent children</b>	26.0%	25.7%	29.5%
<b>Lone parent households with dependent children</b>	2.9%	3.9%	6.5%
<b>Owner occupied</b>	66.6%	69.2%	68.9%
<b>Rented from Council</b>	0.0%	0.8%	13.2%
<b>Rented from Housing Association or Registered Social Landlord</b>	7.4%	11.7%	6.0%
<b>Private rented or lived rent free</b>	26.0%	18.2%	11.9%
<b>Without central heating</b>	6.2%	10.1%	8.5%
<b>Without sole use of bath, shower or toilet</b>	0.0%	0.3%	0.5%
<b>Have no car or van</b>	7.4%	17.2%	26.8%
<b>Have 2 or more cars or vans</b>	56.1%	36.2%	29.4%
<b>Average household size (number)</b>	2.4%	2.3	2.4
<b>Average number of rooms per household</b>	6.9%	5.9	5.3

Source: 2001 Census, ONS

### Ryedale House Prices

Detached	£304,297	Change in last quarter	-3.2%
Semi-detached	£191,233	Change in last year	4.5%
Terraced	£158,660	Sales	251
Flat	£127,772		
<b>Average</b>	<b>£223, 485</b>		

Source: BBC News 9 May 2007-Land Registry of England and Wales

### Housing Type

58.2% of the housing stock in Ryedale South West ward is comprised of detached dwellings, 28.3% are semi-detached dwellings, 11.5% are terraced and purpose built flats 1.9%. The numbers are detailed below:

	Number	Ward %	Ryedale %	England %
Detached dwellings	403	58.2	41.1	22.5
Semi-Detached dwellings	196	28.3	32.2	31.6
Terraced dwellings	80	11.5	19.2	25.8
Flat - Purpose built	0	0.0	4.2	14.0
Flat – part conv'n/shared hse	9	1.3	1.5	4.5
Flat – in commercial building	4	0.6	1.4	1.1
Caravan or other mobile /temp structure	0	0.0	0.4	0.4

Source: Census 2001

### Vacant Dwellings

	Total number of dwellings on Council Tax Valuation List	Number of dwellings vacant for up to 12 months - major repair works (CTAX Exempt Code A)	Number of dwellings vacant for up to six months (Codes B & C)	Number of other vacant dwellings (Codes D E F G H I J K L & Q)	Number of dwellings in receipt of 50% discount	Total number of second Homes
Amotherby	792	2	8	1	14	20
Ampleforth	709	0	10	6	20	32
Cropton	695	0	6	6	16	38
Dales	758	2	6	4	23	123
Derwent	1495	2	19	5	31	22
Helmsley	1531	0	18	9	36	78
Hovingham	792	0	9	3	11	28
Kirkbymoorside	1631	3	11	11	37	44
Malton	2349	3	33	11	32	8
Norton East	1495	0	9	5	5	2
Norton West	1478	6	9	8	22	5
Pickering East	1607	2	10	12	24	46
Pickering West	1593	2	14	9	13	27
Rillington	791	0	11	3	10	5
<b>Ryedale South West</b>	<b>683</b>	<b>0</b>	<b>6</b>	<b>1</b>	<b>14</b>	<b>7</b>
Sherburn	811	0	4	8	12	15
Sheriff Hutton	737	1	11	3	11	8
Sinnington	770	2	10	7	24	49
Thornton Dale	1569	1	12	11	42	84
Wolds	678	0	5	5	11	8
<b>Ryedale</b>	<b>22964</b>	<b>26</b>	<b>221</b>	<b>128</b>	<b>408</b>	<b>649</b>

Source: Ryedale D C, Council Tax Database as at 31.03.03

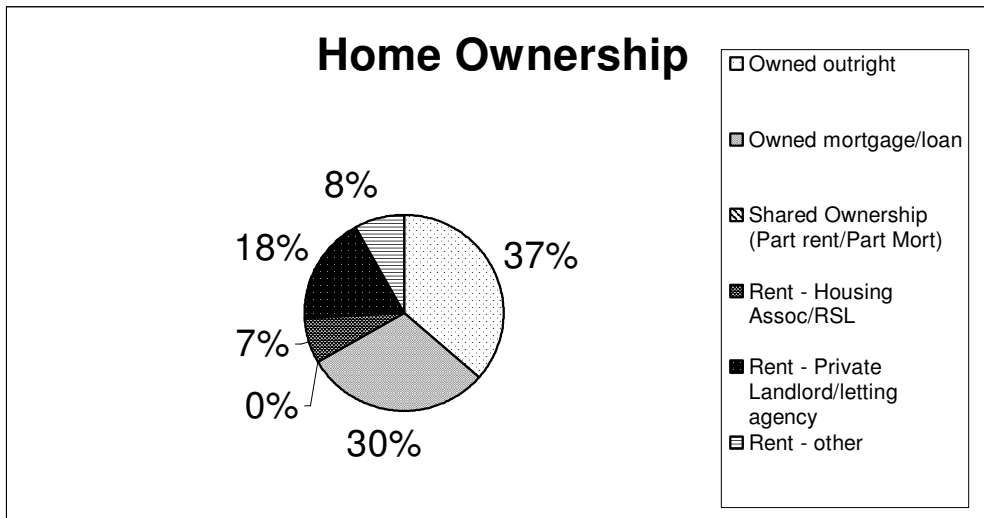
### Second Homes/Holiday Cottages

Ward	Number	% of Total Properties
Amotherby	16	2.1
Ampleforth	30	4.4
Cropton	46	6.5
Dales	112	14.2
Derwent	25	1.7
Helmsley	89	5.9
Hovingham	19	2.4
Kirkbymoorside	53	3.3
Malton	9	0.4
Norton East	5	0.3
Norton West	4	0.3
Pickering East	48	3.0
Pickering West	17	1.1
Rillington	5	0.6
<b>Ryedale South West</b>	<b>21</b>	<b>3.0</b>
Sherburn	4	0.5
Sheriff Hutton	7	1.0
Sinnington	36	4.6
Thornton Dale	122	7.7
Wolds	4	0.6
Ryedale Total	672	3.0

Source: Census 2001

### Home Ownership

Out of a total of 649 households over half (431) are owned outright or with a loan/mortgage, 48 rent from a Housing Association, 168 rent privately.



Source: Census 2001

## Comparison of Home Ownership

	Ryedale South West	Ryedale	England
Owned – outright	36.4%	37.8%	29.2%
Owned – mortgage/loan	30.1%	31.0%	38.9%
Shared Ownership (Part rent/part mortg)	0.0%	0.4%	0.6%
Rented - Council	-	-	13.2%
Rented – Housing Assoc/RSL	7.4%	12.6%	6.05%
Rented – Private landlord/letting agency	17.7%	12.2%	8.8%
Rented – Other	8.2%	6.0%	3.2%

Source: Census 2001

## Household Amenities

6.2% of households in Ryedale South West Ward have no central heating. No households have to share bathroom/toilet facilities.

The average household size in this ward is 2.45. The average number of rooms per household is 6.9 rooms.

Source: Census 2001

## Homelessness

Applications dealt with by Ryedale District Council

Ward	Number of applications 2005/06	Number accepted 2005/06
Amotherby	5	1
Ampleforth	0	0
Cropton	0	0
Dales	1	1
Derwent	4	2
Helmsley	2	2
Hovingham	1	0
Kirkbymoorside	7	3
Malton	25	8
Norton East and West	36	19
Pickering East and West	25	11
Rillington	4	0
<b>Ryedale South West</b>	<b>0</b>	<b>0</b>
Sherburn	5	1
Sheriff Hutton	1	1
Sinnington	4	3
Thornton Dale	3	0
Wolds	5	3
Other: e.g. No fixed abode or out of area	16	5
<b>Total</b>	<b>144</b>	<b>60</b>

Source: Housing Services, Ryedale District Council, April 2007

## Safety

### Area Statistics - Levels of crime in Ryedale Notifiable offences recorded by the police April 2005 to March 2006

	Violence against the person	Sexual offences	Robbery	Burglary from a dwelling	Theft of a motor vehicle	Theft from a motor vehicle
<b>Total number of offences recorded, Ryedale</b>	417	31	0	89	108	208
<b>Rate per 1,000 population, Ryedale</b>	8.1	0.6	0.0	1.7	2.1	4.0
<b>Rate per 1,000 population, England and Wales</b>	19.7	1.6	1.8	5.7	4.0	4.9

Source: Home Office Crime Statistics, April 2007

## Poverty

### Benefit Claims

In August 2006, there were 2,300 Housing Benefit claimants in Ryedale, which is 10.8% of all households in the Ryedale area and 3,100 Council Tax Benefit claimants, which is 14.9% of all households.

Source: *Department for Work and Pensions*

### Working-age benefits

The Jobseeker's Allowance (JSA) is payable to people under pensionable age who are available for, and actively seeking, work.

#### Total JSA claimants (March 2007)

	Ryedale South West (numbers)	Ryedale South West (%)	Ryedale (%)	Great Britain (%)
All people	9	0.9	1.2	2.6
Males	5	1.0	1.5	3.6
Females	4	0.9	0.9	1.4

Source: *claimant count with rates and proportions*

Note: *The percentage figures show the number of JSA claimants as a proportion of resident working-age people.*

#### JSA claimants by age and duration (March 2007)

	Ryedale South West (numbers)	Ryedale South West (%)	Ryedale (%)	Great Britain (%)
<b>by age of claimant</b>				
Aged 18-24	0	11.1	22.6	30.3
Aged 25-49	5	44.4	48.9	52.3
Aged 50 and over	5	44.4	27.4	16.1
<b>by duration of claim</b>				
Up to 6 months	5	66.7	70.7	66.5
Over 6 up to 12 months	0	11.1	16.4	17.1
Over 12 months	0	22.2	12.9	16.3

Source: *claimant count - age and duration*

Note: *The % figures represent the number of JSA claimants in a particular category as a % of all JSA claimants.*

#### DWP benefit claimants (May 2006)

	Ryedale South West (numbers)	Ryedale South West (%)	Ryedale (%)	Great Britain (%)
Total claimants	55	5.7	8.6	14.7
Job seekers	10	1.0	1.2	2.6
Incapacity benefits	30	3.1	4.3	7.4
Lone parents	10	1.0	0.9	2.1
Carers	0	0	0.9	1.0
Others on income related benefits	0	0	0.3	0.4
Disabled	5	0.5	0.7	0.9
Bereaved	0	0	0.4	0.3

Source: *benefit claimants - working age clients for small areas*

Note: *The percentage figures show the number of benefit claimants as a proportion of resident working-age people.*

## Indices of Deprivation

The Indices of Deprivation 2004 were published by the Department for Communities & Local Government (DCLG) in May 2004, and revised in June 2004. They measure deprivation at a small area level of Lower Layer Super Output Areas (SOAs). SOAs are a new geography designed for the collection and publication of small area statistics and fit within current Ryedale ward boundaries. The ID 2004 updates the ID 2000 in two key ways, more up-to-date data has been used and new measures have been incorporated as new and improved data sources have become available, therefore ID 2000 and ID 2004 are not comparable.

### Index of Multiple Deprivation

The IMD 2004 provides an overall score of deprivation, combining 7 distinct categories of deprivation, known as domains. These domains cover:

Low income	Lack of work	Poor health	Lack of education
Poor housing and access to services	Crime		Poor living environment

There are also two supplementary indices:

*Child poverty*

*Older people in poverty*

The Indices are available on the DCLG website [www.communities.gov.uk](http://www.communities.gov.uk) by following the links to Research and Statistics/Publications/Creating better communities research and statistics/Indices of Deprivation. Maps of SOAs are available on the Office for National Statistics website [www.statistics.gov.uk](http://www.statistics.gov.uk) under Neighbourhood.

### DCLG reference numbers for each SOA and its Ward

36UFGF	Amotherby	E01027774	36UFGN	Kirkbymoorside	E01027784	36UFGT	Pickering West	E01027794
36UFGG	Ampleforth	E01027775	36UFGP	Malton	E01027785	36UFGT	Pickering West	E01027795
36UFGH	Cropton	E01027776	36UFGP	Malton	E01027786	36UFGU	Rillington	E01027796
36UFGJ	Dales	E01027777	36UFGP	Malton	E01027787	36UFGW	Ryedale South West	E01027797
36UFGK	Derwent	E01027778	36UFGQ	Norton East	E01027788	36UFGX	Sherburn	E01027798
36UFGK	Derwent	E01027779	36UFGQ	Norton East	E01027789	36UFGY	Sheriff Hutton	E01027799
36UFGI	Helmsley	E01027780	36UFGR	Norton West	E01027790	36UFGZ	Sinnington	E01027800
36UFGI	Helmsley	E01027781	36UFGR	Norton West	E01027791	36UFHA	Thornton Dale	E01027801
36UFGM	Hovingham	E01027782	36UFGS	Pickering East	E01027792	36UFHA	Thornton Dale	E01027802
36UFGN	Kirkbymoorside	E01027783	36UFGS	Pickering East	E01027793	36UFHB	Wolds	E01027803

Source: DCLG



## Leisure & Cultural Facilities

Point-to-Point Racecourse, Whitwell-on-the-Hill

## Community Services & Facilities

### Local Facilities

Settlement	Village Hall/ Meeting Room	Post Office	Shop	Banks	Public House	Hotel/ Guest House	Petrol Station
Barton-le-Willows	•				•		
Bossall							
Buttercrambe							
Claxton							
Crambe							
Foston							
Gate Helmsley	•				•		•
Harton							
Sand Hutton	•						
Upper Helmsley							
Warhill		•			•		
Whitwell-On-The-Hill							

Source: Valuation Office 31.12.03

### Post Offices

Warhill Post Office  
Warhill

### Business Rate Properties

Parish	Current Rateable Value	No. of Properties
Barton Le Willows	£48,500	6
Buttercrambe	£96,510	21
Claxton	£213,350	5
Crambe	£425	1
Foston	£12,650	2
Gate Helmsley	£102,625	9
Harton	£325,620	11
Sand Hutton	£2,058,485	14
Upper Helmsley	£20,885	5
Warhill	£61,200	10
Whitwell on the Hill	£89,000	6
<b>Total</b>	<b>£3,029,250</b>	<b>90</b>

Source: RDC Business Rate Database 1 April 2007

## Pre-School Groups & Childcare

*Barton le Willows Playgroup* which meets at the Village Hall

*Sand Hutton* has a pre-school playgroup called The Wishing Well Playgroup. It has 18 places and meets at The Village Hall, Sand Hutton.

*Sand Martins Day Nursery* opened at the Central Science Laboratory originally to care for employees' children. The nursery is now open to the wider community and has 47 places.

*Big Blue House Day Nursery*, Primrose Hill, Stamford Bridge

Source: NYCC, Children's Information Service

## Registered Childminders

Ward	Number	Ward	Number
Amotherby	2	Norton East & West	9
Ampleforth	1	Pickering East & West	10
Cropton	2	Rillington	2
Dales	0	<b>Ryedale South West</b>	<b>2</b>
Derwent	4	Sherburn	0
Helmsley	2	Sheriff Hutton	0
Hovingham	1	Sinnington	1
Kirkbymoorside	2	Thornton Dale	1
Malton	3	Wolds	1

Source: NYCC, Children's Information Service

Note: Information taken from NYCC website – information may not be complete due to confidentiality

## Education

### Schools

There are three schools within this ward:

#### *Foston Church of England Primary School*

Classification – Voluntary Controlled

Estimated Total Number of Pupils	26
Maximum Admission Limit (First Year pupils)	5
Number of Pupils admitted 2001/2002	5
Number of Pupils admitted 2002/2003	4
Number of Pupils admitted 2003/2004	3

#### *Sand Hutton Church of England Primary School*

Classification – Voluntary Controlled

Estimated Total Number of Pupils	80
Maximum Admission Limit (First Year pupils)	10
Number of Pupils admitted 2001/2002	10
Number of Pupils admitted 2002/2003	12
Number of Pupils admitted 2003/2004	4

#### *Warthill Church of England Primary School*

Classification – Voluntary Controlled

Estimated Total Number of Pupils	28
Maximum Admission Limit (First Year pupils)	6
Number of Pupils admitted 2001/2002	2
Number of Pupils admitted 2002/2003	4
Number of Pupils admitted 2003/2004	2

Source: NYCC

### Youth Provision

There are no youth clubs or youth centres in this ward.

## Health & Social Care

### Health and provision of care

The 2001 Census asked people to describe their health, over the preceding 12 months as 'good', 'fairly good' or 'not good'.

#### Resident population

	Ryedale South West	Ryedale	England and Wales
<b>Good</b>	71.7%	69.4%	68.6%
<b>Fairly good</b>	20.9%	22.8%	22.2%
<b>Not good</b>	7.4%	7.8%	9.2%

Source: 2001 Census, ONS

It also asked questions about any limiting long-term illness, health problem or disability which limited people's daily activities or the work they could do.

#### Resident population

	Ryedale South West	Ryedale	England and Wales
<b>With a limiting long-term illness</b>	18.3%	16.8%	18.2%

Source: 2001 Census, ONS

For the first time, the 2001 Census asked a question about any voluntary care provided to look after, or give any help or support to family members, friends, neighbours or others because of long term physical or mental ill-health or disability, or problems relating to old age.

#### Resident population

	Ryedale South West	Ryedale	England and Wales
<b>Provided unpaid care</b>	12.4%	10.0%	10.0%

Source: 2001 Census, ONS

There are two main benefits associated with health that are paid to people needing help with personal care. They are the 'Disability Living Allowance' and the 'Attendance Allowance'.

- The Disability Living Allowance is a benefit paid to people under 65, who are disabled, and need help with personal care, and/or getting around. In August 2006, 1620 in Ryedale received this benefit. Source: Department for Work and Pensions, May 2007
- The Attendance Allowance is paid to people over the age of 65, who are so severely disabled, physically or mentally, that they need supervision or a great deal of help with personal care. In August 2006, 1470 people in Ryedale received this benefit. Source: Department for Work and Pensions, May 2007

### Care/Nursing/Residential Homes

None in this ward - please see Wards of Helmsley, Pickering (both), Malton, Norton (both) and Thornton Dale.

#### NHS GP Surgeries in Ryedale

Ampleforth, Helmsley, Hovingham, Kirkbymoorside, Malton, Norton, Pickering, Rillington, Sherburn, Sheriff Hutton, Staxton, Terrington, Thornton Dale and Wetwang.

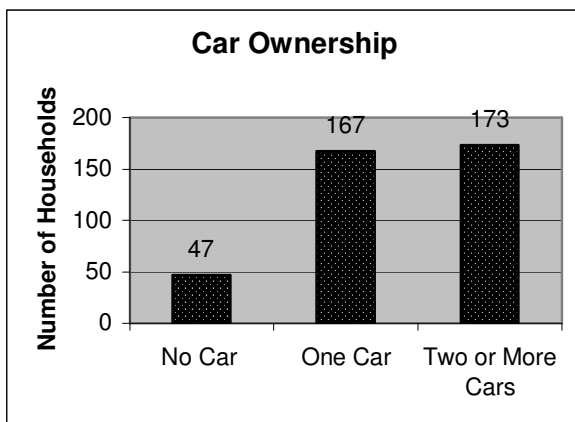
#### Dental Surgeries in Ryedale

Helmsley, Kirkbymoorside, Malton and Pickering

## Transport

### Car Ownership

In Ryedale South West Ward, 36.5% of households have one car, 56.1% have two or more cars, whilst 7.4% of households have no car at all.



Source: Census 2001

Cars or Vans	Ryedale South West	Ryedale	England
None	7.4%	17.2%	26.8%
One	36.5%	46.6%	43.7%
Two	41.6%	28.6%	23.6%
Three	11.3%	5.7%	4.5%
Four or more	3.2%	1.9%	1.4%

Source: Census 2001

### Travel to Work

	Number	Ryedale South West %	Ryedale %	England %
Work mainly at or from home	179	21.5	17.9	9.2
Underground; metro; light rail; tram;	0	0.0	0.0	3.2
Train	7	0.8	0.9	4.2
Bus; mini bus or coach	25	3.0	2.2	7.5
Motor Cycle; scooter; moped	7	0.8	0.9	1.1
Driving a car/van	515	62.0	54.4	54.9
Passenger car/van	47	5.7	5.6	6.1
Taxi or minicab	0	0.0	0.2	0.5
Bicycle	17	2.0	4.3	2.8
On foot	29	3.5	12.9	10.0
Other	5	0.6	0.7	0.5

Source: Census 2001

### Bus Passes in Ryedale

At the end of January 2004, 6187 persons of pensionable age (60 or over, 2001 Census) had a bus pass, 45.58% of the 13,573 eligible.

# Environmental Profile

Ryedale has many areas of natural beauty and buildings considered by the Secretary of State for Culture, Media and Sport to be of special architectural or historic interest.

## Conservation

### Conservation Areas

There are currently 45 Conservation Areas in Ryedale (12 of which are exclusively within the North York Moors National Park, and 4 are partly within the Park). The conservation areas in Ryedale South West Ward are in:

Barton-le-Willows  
Claxton  
Sand Hutton

### Sites of Special Scientific Interest (SSSIs)

There are 29 SSSIs within the District, ranging from flower-rich chalk grasslands to lowland woodlands and marshes.

Ryedale South West Ward has two SSSIs:

- River Derwent – considered one of the best British examples of the classic river profile
- Kirkham Park and Riverside

*Source: Ryedale Local Plan*

### Sites of Importance for Nature Conservation (SINCs)

There are 7 sites in Ryedale South West Ward:

Bossall Churchyard	Churchyard with neutral grassland and woodland flora including abundant wood anemone.
Scrogs Wood, Sand Hutton	A mixture of broad-leaved plantation and ancient semi-natural woodland.
Sandlands Meadow, Crambe	Unimproved ridge-and-furrow hay meadow adjacent to River Derwent, with species-rich flora.
Oak Cliff Wood	A small semi-natural ash woodland adjacent to River Derwent
Paradise Farm Grasslands, nr Howsham	Pastures adjoining the River Derwent
Swincarr Plantation, Upper Helmsley	Semi-natural woodlands
Barnby Willow Garth	Semi-natural swamp-carr

*Source: Ryedale Local Plan*

## Regionally Important Geological/Geomorphological Sites (RIGS)

These sites are considered worthy of protection for their educational, research, historical or aesthetic importance. There are 5 RIGS within Ryedale, one in Derwent Ward and four in Wolds Ward.

Source: Ryedale Local Plan

### Listed Buildings

In total, there are 54 listed buildings in Ryedale South West Ward. All listed buildings are judged against a set of national standards. There are three grades of listed buildings based on how important a building is.

**Grade I** Exceptional historic buildings.

**Grade II\*** Good Quality Buildings in their original condition, normally with an interior of interest.

**Grade II** The buildings that fall within this category are listed on the basis of external inspection.

Parish	Grade One	Grade 2*	Grade Two	Total Listed Records
<b>Barton-le-Willows</b>			4	<b>4</b>
<b>Buttercrambe with Bossall</b>	1	2	10	<b>13</b>
<b>Claxton</b>			3	<b>3</b>
<b>Crambe</b>	1		5	<b>6</b>
<b>Foston</b>		2	1	<b>3</b>
<b>Gate Helmsley</b>		1	6	<b>7</b>
<b>Upper Helmsley</b>			2	<b>2</b>
<b>Harton</b>			5	<b>5</b>
<b>Sand Hutton</b>			7	<b>7</b>
<b>Warthill</b>		1	3	<b>4</b>
<b>Whitwell-On-The-Hill</b>				<b>0</b>
<b>Total in Ward</b>	<b>2</b>	<b>6</b>	<b>46</b>	<b>54</b>

Source: English Heritage

### Ancient Monuments

Ryedale has over 300 Scheduled Ancient Monuments, 5 of which are sited within this ward:

Parish	No. of sites	
Buttercrambe with Bossall	1	Bossall Hall – a quadrangular castle.
Foston	2	Medieval settlement and moated monastic grange. Moated site.
Sand Hutton	1	St Leonard's Church and cross base adjacent to St Mary's Church.
Whitwell-On-The-Hill	1	Kirkham Bridge

Source: Ryedale Local Plan

## Asset Management

### Council owned assets and land

Place	Asset	Value	Valuation Date
Risewood, Gate Helmsley	Amenity Land	£35,000	31 Mar 03
	<b>Total</b>	<b>£35,000</b>	

Source: RDC Property Services Unit April 2007

## Development

### Planning Applications by Type 2006-2007

Parish	Full Application	Outline Application	Agricultural Notification	Conservation Area Consent	Listed Building Consent	Other	Total
Barton-le-Willows	5				2		7
Buttercrambe with Bossall							0
Claxton	3				1	Advert Application x 1	5
Crambe							0
Foston	1					Consultation with County Planning x 1	2
Gate Helmsley	8					Tree Preservation Order x 1	9
Harton	1					Advert Application x 1	2
Sand Hutton	10			1		Consultation with County Planning x 2	13
Upper Helmsley							0
Warhill	4		1			Consultation with County Planning x 1 Tree Preservation Order x 1	7
Whitwell-On-The-Hill							0
						<b>Total</b>	<b>45</b>

Source: RDC Development Control Unit April 2007

### Land Available for Housing Development

The Ryedale Local Plan (2003 update) allocated the 6 sites listed below for housing development, totalling 12 hectares of land. Three of the sites have been developed. The capacity of the remaining sites is likely to range between 103 and 128 units in total. None of the sites is in this Ward. (Source: RDC 2006 Annual Monitoring Report. Forward Planning & Conservation Unit)

Hovingham	Approx 1.1 hectares
Feversham Drive, Kirkbymoorside	Approx 0.9 hectares (developed)
Scarborough Road, Norton	Approx 5.6 hectares (developed)
Whitfield Avenue, Pickering	Approx 1.44 hectares
Goslipgate, Pickering	Approx 2.7 hectares (developed)
Swinton	Approx 0.3 hectares

## Waste & Recycling

### Asset Management

#### Recycling Sites

The recycling sites in this ward are situated at:

Town/Village	Location	Glass	Paper	Cans	Text-iles	Books	Other
Warthill	Agar Arms Public House	•					
Whitwell-on-Hill	Adj to Telephone Box		•	•			

Source: Commercial Services, Ryedale District Council

#### Landfill Sites

In Ryedale there are Landfill Sites at:

Place	Site	Details
Hutton-le- Hole	Westfield Lodge	Landfill taking other wastes (construction, demolition, dredgings)
Marton	Golden Hill Quarry,	Small-scale site which takes construction, demolition and dredging waste.
East Knapton	Teydale Farm, Knapton Gravel Quarry	Small-scale site which takes special waste.
Staxton	South of A64	Landfill taking non-biodegradable wastes (not construction)
Strensall	Brickyard Farm, Sheriff Hutton Road	Large-scale site which takes construction, demolition and dredging waste.
Thornton-le-Dale	Caulklands Quarry, Outgang Lane	Small-scale site taking household and special waste.

Source: Environment Agency Jan 04

#### Civic Amenity Sites

There are Civic Amenity Sites at:

Place	Site
Malton	Malton Household Waste Site, Pasture Lane, Malton
Norton	Norton Household Waste Site, Off Eastfield Avenue
Thornton Dale	Caulklands Household Waste Site, Outgang Lane, Thornton-le-Dale
Wombleton	Waste Disposal, Cockerhill Lane, Wombleton



## Political Profile

### Members of European Parliament for Yorkshire & the Humber

Mr Godfrey Bloom (UK Independence Party)  
Tel: 01757 630 778  
Email: [gbloom@ukip.org](mailto:gbloom@ukip.org)

Richard Corbett (Labour)  
Tel: 0113 245 8978  
Email: [richard@richardcorbett.org.uk](mailto:richard@richardcorbett.org.uk)

Timothy Kirkhope (Conservative)  
Tel: 00 322 284 7321  
Email: [timothy.kirkhope@europarl.europa.eu](mailto:timothy.kirkhope@europarl.europa.eu)

Mrs Linda McAvan (Labour)  
Tel: 01709 875 665  
Email: [lindamcavan@lindamcavanmep.org.uk](mailto:lindamcavan@lindamcavanmep.org.uk)

Edward McMillan Scott (Conservative)  
Tel: 01937 842 157  
Email: [edward.mcmillan-scott@europarl.europa.eu](mailto:edward.mcmillan-scott@europarl.europa.eu)

Ms Diana Wallis (Liberal Democrat)  
Tel: 01482 666 898  
Email: [diana@dianawallismep.org.uk](mailto:diana@dianawallismep.org.uk)

### Member of Parliament

John Greenway MP (Conservative)  
Email: [greenwayj@parliament.uk](mailto:greenwayj@parliament.uk)

Tel: 01653 692 023

### County Councillor

Clare Wood **NYCC- Hovingham & Sheriff Hutton Ward**  
Tel: 01904 489362(home)  
Email: [cllr.c.wood@northyorks.gov.uk](mailto:cllr.c.wood@northyorks.gov.uk)

### Serving for North Yorkshire County Council the parishes of:

Ampleforth, Barton-le-Street, Barton-le-Willows, Bossall, Bulmer, Buttercrambe, Byland, Cawton, Claxton, Coneysthorpe, Coulton, Crambe, Flaxton, Foston, Fryton, Gate Helmsley, Gilling East, Grimstone, Harton, Henderskelfe, Hovingham, Howsham, Huttons Ambo, Lillings Ambo, Oldstead, Sand Hutton, Scackleton, Sheriff Hutton, Slingsby, South Holme, Terrington, Thornton-le-Clay, Upper Helmsley, Warthill, Wass, Welburn (Malton), Westow, Whitwell-on-the-Hill.

### District Councillor

Keith Knaggs  
(Conservative)

Felbridge, Normanby, Sinnington, YORK YO62 6RH  
Email: [cllr.keith.knaggs@ryedale.gov.uk](mailto:cllr.keith.knaggs@ryedale.gov.uk)

### Tel No

01751 430192

### Name of Parish Council/ Meeting

For contact details please refer to our website [www.ryedale.gov.uk](http://www.ryedale.gov.uk) then Council & Democracy/Elected Representatives /Parish & Town Councils & Councillors.

Barton-le-Willows Parish Council  
Buttercrambe with Bossall Parish Council  
Claxton & Sand Hutton Parish Council  
Foston & Thornton-le-Clay Parish Council  
Gate Helmsley & Upper Helmsley Parish Council  
Harton Parish Meeting  
Warthill Parish Council  
Whitwell-On-The-Hill & Crambe Parish Council

## Ryedale District Election Turnout – 3 May 2007

Ward	Electorate	Turnout
Amotherby	1433	42.78%
Ampleforth		Uncontested
Cropton	1,249	58.61%
Dales	1164	58.51%
Derwent	2676	42.71%
Helmsley	2512	43.59%
Hovingham		Uncontested
Kirkbymoorside	2747	43.87%
Malton	3859	35.55%
Norton East	2671	24.41%
Norton West	2672	27.69%
Pickering East*		Uncontested
Pickering West		Uncontested
Rillington		Uncontested
Ryedale South West	1320	42.58%
Sherburn	1465	39.18%
Sheriff Hutton	1377	54.90%
Sinnington	1399	47.03%
Thornton Dale	2720	46.62%
Wolds	1358	45.14%
<b>Ryedale Electorate</b>	<b>30,622</b>	
<b>Ryedale Average</b>		<b>41.36%</b>

Source: RDC Electoral Services 2007

\*Pickering East Ward: A further election will be held on 21 June 2007 for the vacant seat.

### Ward Profiles Version History

Version Number	Revision Date	Author
1.0	March 2004	Performance Management Unit
1.1	December 2005	Performance Management Unit
1.2	May 2007	Performance Management Unit