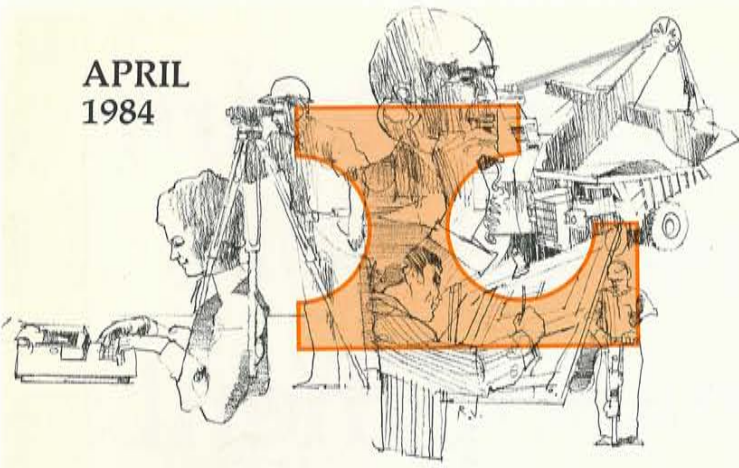


APRIL
1984



LEIGHTON NEWSLETTER

PUBLISHED BY THE MARKETING DIVISION OF LEIGHTON

PM opens new bridge in Tasmania

In officially opening the new \$40 million Bowen Bridge in Hobart, Prime Minister Bob Hawke described it as "a magnificent structure" and one he regarded as "a triumph of Australian enterprise".

He said the 976 metres long bridge, which was built by the Leighton-Candac joint venture, had applied the most modern bridge building techniques in the world in its construction.

The Bowen Bridge was designed in the wake of the 1975 Tasman Bridge disaster in which a bulk ore carrier brought down several bridge spans after colliding with a pier. The new bridge is upstream from the Tasman

Bridge and is regarded as being "disaster proof".

Construction

The bridge comprises eight river spans each 109 metres, with end spans of 48 metres and 56 metres. A constant overall deck width of 21.4 metres incorporates two 7.4-metre carriageways of two lanes each and two walkways.

Leighton-Candac used an extremely

economical balanced cantilever construction method which avoided the use of falsework in the river. This is the first time such a method has been used in Australia. Match casting of segments allowed the deck to be cast whilst the massive foundations were being built. In addition, the match cast segmental design permitted rapid superstructure erection.

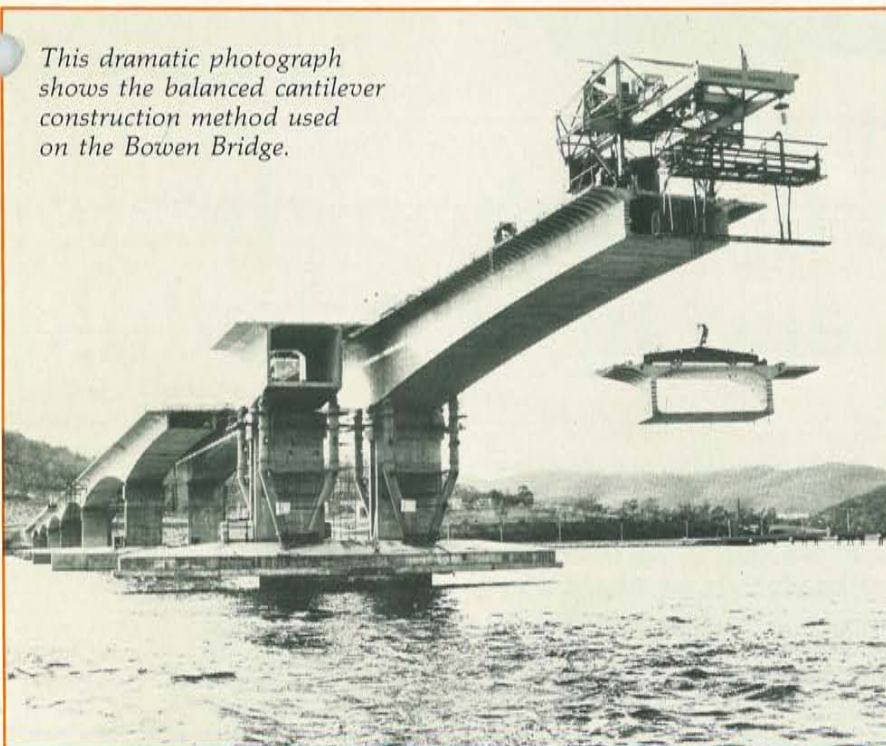
The superstructure comprises two single box girders erected side by side and joined by an insitu longitudinal joint. The segments were match cast in the order of their erection. Successive segments were cast directly against preceding adjacent segments, with a debonding agent applied to the adjacent face to permit separation.

Resists impact

The foundation design was dominated by the requirement that all river piers be capable of resisting impact by barges travelling at operating speed (six knots) and assisted by the current (one knot). All piers have been designed to allow for an impact force of 1600 tonnes at an angle of impact of up to 45 degrees from the pile cap centreline, and a force of 1000 tonnes in the remaining directions.

The 1600 tonne force allows for impact from future river barges up to 5000 dead weight tonnes (dwt), and the philosophy adopted is to provide a massive gravity foundation structure which is large enough

This dramatic photograph shows the balanced cantilever construction method used on the Bowen Bridge.



(Continued on page two)

Leighton property team plans large-scale beachside development

Planning is well advanced for Leighton Properties' multi-million dollar proposed development of the Manly Centre site in the heart of the popular Sydney suburb's commercial centre.

Last August, Leighton was granted the exclusive right to prepare a proposal for the site within one year.

Tasmanian bridge completed

(Continued from page one)

to generate sufficient force to crumple the bow of barges, so that the impact energy is destroyed.

The design permits future strengthening to resist a force of 2900 tonnes due to impact from a 10,000 dwt barge.

Arising from ship impact requirements, the river pier foundations are massive reinforced concrete caisson structures, 13.3 metres OD and 1.2 metres wall thickness, built from the bottom up.

The deepest of the nine piers is 48 metres below water level. Other impressive statistics are:

Total mass of concrete: 105,000 tonnes;

Total mass of reinforcing steel: 3,300 tonnes;

Total length of steel tendons: 760 kilometres.

The client was the Joint Committee Second Hobart Bridge, which comprised representatives of both the State and Federal Governments. Maunsell and Partners were consulting engineers.

Leighton's current concepts involve acquisition of many adjoining properties and for development of a seven day a week community centre for Manly. This would considerably enhance Manly's attraction as a tourist destination.

Planning is being undertaken in close liaison with a committee of Council's four senior executives, which has been given access to virtually all of Leighton's planning information. This is to help ensure that the direction being taken conforms with Council's long and short term requirements.

"Among the features of the re-



Richard Harper

development will be a carpark capable of holding more than 800 vehicles, a major supermarket, a new library and a number of other long-awaited community facilities," said Leighton's project director Richard Harper.

"Current concepts also include a restaurant, a cinema complex and some unique international attractions. The new Centre, which will have a relaxed environment, will complement the Council's plans for redevelopment in the area.

"Leighton intends to create an exciting, high quality centre which can bring major benefits to the municipality, yet will retain the special character of The Corso.

"It is essential to unify the whole of this zone, creating an area in which all who live and work can benefit from the increasing opportunities for employment, trade, property values and prosperity," said Richard Harper.

Others involved in the Manly Centre development are project manager David Holt, and members of Leighton's Central Building Group, led by chief architect Richard Dinham.

High school beats very tight schedule

Work has now been completed on the construction of a junior high school at Booragul, for the Catholic Education Office in Newcastle.

The \$1,200,000 project commenced in August, 1983 with the objective of accepting 240 students in February, 1984. This timing provided a daunting task for the site management team of Terry Roche, John

Killalea and Bob Edman.

The project was finished in time to accept the students, with Leighton's cleaners walking out of the buildings as the new and eager students entered their new school.

The actual completion was some eight weeks ahead of the contracted completion date, a great effort in such a short time.

Berry Street development winding-up

Construction has now been completed at Leighton's 50 Berry Street project; a 16 level office building at North Sydney designed and constructed by Leighton Contractors Pty. Ltd. for Kurix Pty. Ltd. Kurix is a joint venture company 50 per cent owned by Leighton Properties.

The project was completed in only 7 months; well ahead of the scheduled completion date and well under budget.

During construction many design changes were made to upgrade the quality and facilities in the building, funded by the savings that cost control procedures showed were being made. Major changes included putting aluminium cladding on the columns and beams, the addition of a sophisticated building management system and installation of a building maintenance unit.

The building's features include full air conditioning by a variable-volume system. This is considered the top of the market air conditioning. It varies the air supply quantity in each of the five separate control zones per floor to match the changes in building cooling and heating loads throughout the day.

A Honeywell Delta 1,000 building energy management and monitoring system has been installed to carry out a variety of cost saving functions associated with the efficient operation of all mechanical and electrical systems.

To clean the building a state of the art Swiss building maintenance unit was installed. The first of its kind in Australia, it is capable of movement up, down and along the building and operated by a single lever.

Leighton personnel involved in the



The impressive exterior of the Berry Street building.

project included development manager Ashley King, project manager Tom Noetel, quantity surveyor John Kirby, trainee project engineer Bill McGarry, general foreman Ted Burgess, foreman Bill Feltl and sub foreman Leon Le Cerf. The building is for sale currently at \$21 million. Staff discounts do not apply.

STOP PRESS ...

\$30 million Victorian Bar building

Leighton and the merchant bank Schroder, Darling and Co Ltd have won the right to develop a major building to rehouse 550 Victorian barristers. The building will take two years to complete, although lower floors will be ready for occupation in November next year.

Negotiations are now taking place between the Victorian Bar Council, Leighton and Schroder, Darling on the final agreement for finance and construction.

Full details in the next Leighton Newsletter.

Victoria's \$18 million winning streak

In the past few weeks, Leighton in Victoria has won close to \$18,000,000 worth of contracts for both building and civil works.

The largest contract is for construction of a bus workshop at Northcote for the Metropolitan Transit Authority. The contract, worth \$6,000,000 will take about 14 months to complete.

Another transport related contract is Leighton's second current contract on the site for a workshop building at the Springfield Bus Depot in Tasmania. This work is worth around \$2,000,000.

There are also two education

building contracts. The branch returns to Erinbank High School for a \$2,900,000 contract and has also been awarded a \$2,400,000 contract to build classrooms and staff facilities at the Wendouree High/Technical School.

Three highway projects totalling \$4,550,000 have been won by the branch in Victoria and Tasmania. They are the Algona Main Road in Hobart, the Western Freeway at Melton and the Winton Interchange embankment on the Hume Freeway.



Premier Wran opens new Leighton offices

New South Wales Premier Mr Neville Wran complimented Leighton for having the foresight to diversify and to plan for future needs when he officially opened the newly-built Leighton House at St. Leonards recently.

He said the "beautifully crafted" building represented far more than a fine example of Leighton's varied skills and resources. "It also represents new beginnings for Leighton Holdings, which has just emerged from a year of massive change and expansion," he said.

"Leighton appears to have taken some positive action to ensure future prosperity.

"To some extent, Leighton has anticipated the Federal Government's policy of integration with our Asian neighbours, and you appear to have positioned this company to take the fullest advantage, not only of the Australian recovery, but that of the United States and South East Asia too."

Wal King, deputy managing director of Leighton Holdings, with Mrs Erika Pidcock.



Mr Wran said that the opportunities offered by the development of the Pacific region were available "if we are prepared to compete for them".

"The fundamental fact is that if you want to win, you have to be in the game. Leighton has obviously got a very clear grasp of this fact.

"I can only hope that Sydney's financial community will soon be able to follow your lead — offshore, into the central stream of development in the Pacific region.

"In opening this magnificent new building, I feel I am also opening a new international era in the Australian construction industry because from here Leighton will be taking on the world in its international operations," he said.

Leighton's chairman, Sir William

Pettingell, said that at the opening of Leighton House the company wasn't just looking back at its achievements, but already moving into an exciting future.

Leaders

"We will not only be Australia's leading construction group, but the leading property development group too. Already, we are heading in this direction with quite a number of significant projects in the pipeline," he said.

"All of this has been achieved in a period of very difficult market conditions. Now, we are in a strong position to benefit as Australia moves out of recession.

"We have dedicated, talented people, we have financial strength and we have the facilities to take us where we want to go.

"This new headquarters building symbolises the strength of the Leighton group today, and I am very





Unveiling the plaque (from left to right) Leighton chairman Sir William Pettingell, NSW Premier Neville Wran, Leighton chief executive Stewart Wallis.

proud to be here participating in its official opening," he said.

Chief executive, Stewart Wallis, said the new building was a tribute to all who were involved in its design and construction.

People

"In this building, we have provided the best possible facilities for our staff . . . who we regard as being our most important resource. Without their dedication and enthusiasm, we could not have made the giant steps we have made over the years.

"However, this philosophy doesn't only extend to the staff located in this corporate headquarters building. We believe in providing the best possible facilities for everyone

employed by Leighton, from those who work in the most modern offices to people who work for the company in dry, dusty outback areas.

"It is by providing such facilities that we achieve the highest levels of efficiency," he said.

Stewart Wallis also paid tribute to the Wran Government for maintaining the level of public works in New South Wales.

"The State Government plays a vital role in the prosperity of Leighton and the security of employment of thousands of people who are involved directly and indirectly on Leighton projects in this State," he said.

"We have to be highly efficient to make a profit in the construction



Alan Coates, general manager, AMP Society (left) with Leighton finance director Denis Pidcock.

business. The investment we have made in state of the art technology in this building will help us to keep our competitive edge in bidding for what, we hope, will be increasing level of State Government funded building and civil engineering projects.

"Public works are of extreme importance to the entire community during periods of high unemployment, such as we currently have.

"In my view there is no better and faster way of effectively returning people to the work force than by increasing expenditure on public works — even if this necessitates some innovative funding or larger government deficits for a period," he said.

From left to right, Pat Conway (Leighton's general manager Human Resources), John Cecchini (managing director of Multicon Holdings Ltd) and Leighton director Peter North.



(From left to right) Dr Donald Brown, chairman of the NSW Electricity Commission, Stewart Wallis and Frank Brady, general manager, NSW Electricity Commission.



Leighton diversifies into homebuilding

Leighton has made a major move into the domestic homebuilding market with the acquisition of the Queensland-based Dixon Homes.

Currently, Dixon Homes is constructing at a rate of about 150 homes annually. However, it is planned to increase production to 300 units a year by 1985.

The acquisition gives Leighton a solid foothold in the housing market in the fastest growing regions of southern Queensland, namely Brisbane and the Gold Coast.

In this area, Leighton is already strongly associated with the housing sector through the continuing development of the large Ridgewood Estate, the Pacific Keys apartment complex at Broadbeach and real estate agencies at Algester and Sunnybank.

Dixon Homes has a large range of standard design housing which is competitively priced in the medium size, quality market sector. Indicative of the quality is that, recently, Dixon Homes won the 'Under \$45,000 House of the Year Competition' conducted by the Housing Industry Association of Queensland.

Data processing manager Bill Turkington, with DP operators Judy Bellette and Joanne Pederson.



(left) Leighton director Brian Melloy. Dixon extends his property division's activities.

The company's strength is demonstrated by the fact that, although contract home construction has been through somewhat of a downturn in the Gold Coast and southern Brisbane areas, Dixon Homes has managed to progressively increase its sales penetration in this region throughout 1983.

Leighton's acquisition of Dixon Homes is part of the company's long-term diversification programme, which is aimed at broadening its base of activities in construction related fields. Last year,

Salesman Don van der Linden (centre).



Dixon's general manager Rodney Edwards congratulates new managing director Brian Melloy.

this programme saw Leighton Holdings merging the activities of Thiess Contractors into its structure and also the joint acquisition of Green Construction in the USA.

Dixon Homes, which was established about 13 years ago, specialises in brick veneer homes, constructed under contract to purchasers, some of whom are investors capitalising on the steady demand for housing and good rentals on the Gold Coast.

The company is well known to home-buyers in Queensland. It has offices in Brisbane and on the Gold Coast, and engages in very active marketing to keep its name before the public.

Among its most successful promotions has been the dressing up of several display village homes with a



The Award winning "big bow".

huge bow and ribbon. This 'attention-getter' won for the company the 1982 Australian Outside Advertising Award — quite an achievement because the runner-up was the electronic scoreboard at the Melbourne Cricket Ground.

Other publicity now being used includes the 'Dixon dirigible' which flies above display villages, beach umbrellas, coolers and towels with company identification, coasters, newspaper supplements, radio advertising, etc.

One new display home, The Brolga (all the homes are named after birds), has even been put into company colours, attracting a great deal of attention for its dramatic black and white interior decoration. With 25 standard designs, Dixon has one of the largest ranges available in the



Peter Schramko of Leighton Properties, who negotiated the acquisition, inspects Dixon's new HIA Award with Brisbane sales manager Mick Reid.



Interior decorator Julia Grain with Gold Coast sales manager Ray Evans.

industry, and can also build to individual designs.

The company gains a great deal of goodwill from the policy of including in its standard homes amenities (such as lined garages) and materials which many other home building companies treat as optional extras.

For the past two years or so, Dixon Homes has been under the direction of Rodney Moore, an executive of the accounting firm Price Waterhouse. However, with Leighton's acquisition, well-known Queensland housing industry identity Martin Edwards has been appointed managing director.

He sees great potential for the company to expand significantly over the next few years and to present a serious challenge to the current market leader.

"We will be putting up additional

display villages, have some new designs on the drawing boards, and will be strongly marketing Dixon's services throughout the region from Brisbane to Byron Bay.

"This type of business relies as heavily on people as on products, and I am confident that we are close to having a good balance of both. With the Queensland home market running better than the national average, we can do particularly well in the \$35,000-\$45,000 sector of the market, where the bulk of Dixon's sales are made," he said.

Martin Edwards said he would personally like to hear from any Leighton group employees or associates considering purchasing a house in the Dixon Homes catchment area as a home or an investment. "If they speak to me, naturally I can help them with introductions to Dixon personnel," he said.

Ray Evans (left) launching the "Dixon dirigible" over a display village, assisted by salesman Mike Pache.



Craftsman Angelo Pernazzo (left) is briefed a design by senior estimator Peter Scheelbeek.



Boatbuilding factory completed

In Newcastle, Leighton has recently completed a unique manufacturing facility for Ramsay Fibreglass at Tomago, a wholly owned subsidiary of Carrington Slipways Pty. Ltd.

The \$4,300,000 project was completed in only 32 weeks, some four weeks ahead of the extended contract period.

The facilities will be used to build two prototype "catamaran" fibreglass minesweeper vessels.

Work under the contract included construction of a large workshop with a graving dock construction pit, an office block and store rooms, an amenities building, plantroom, a laboratory and resin and chemical storage buildings.

Foam-filled

A highlight of the project was the fire prevention test carried out under simulated conditions in the main construction workshop bay. Under the test the construction bay was filled with foam to a depth of three metres in four minutes, followed by 'top up' cycles to maintain depth.

Due to the tight construction period, assistance in programming was maintained through the "Vision" network under the control of John Turner of C.B.G.

A feature of the facilities was the



The new boatbuilding factory is located close to Carrington Slipway's main facility, which is one of the largest in Australia.

high standard of mechanical, electrical and fire prevention services required for the handling and use of the fibreglass, resins and chemicals. Co-ordination and quality control of these services played a major part in the construction and, to this end, a large input of assistance was given

by Keith Parslow and Bill Nappin of C.B.G.

The project team was headed by Larry Dennis, with Ian Rea as site manager, Bob Watkins as foreman and Andy Keddie as quantity surveyor.



Returning to The Pines

On the Gold Coast, near Currumbin, Leighton is currently constructing further stages of the Pines subdivision development; one of Alan Bond's many ventures.

The contract, worth about \$1,000,000, is well under way with bulk earthworks completed and roadworks substantially advanced.

The go ahead for the contract had been delayed considerably, but was given, finally, soon after Australia II triumphed in Newport.

The project involves 80,000 cubic metres of bulk earthworks, and the construction of 1.6km of roads, along with drainage, sewerage and water reticulation.

A small subdivisional development adjacent to the Pines is also being run in conjunction with the main contract.

Site staff are leading hands Bob Dyball and Geoff Tyson, foreman Kevin Munro and project engineer Colin Bear.

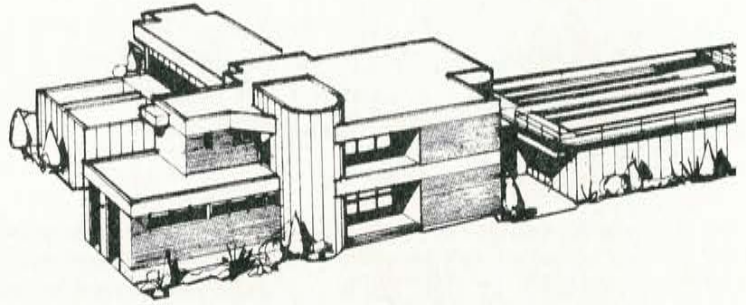
Cleaner water for Casino

Leighton's Gold Coast team has been awarded a contract at Casino to construct a \$2,800,000 water treatment and filtration plant with a capacity of 23 million litres of water a day.

This plant will draw water from the Richmond River system and supply a population of 10,500.

Work involves construction and commissioning of sedimentation basins, filters, sludge lagoons, a clearwater storage tank and a modern architecturally designed control building, together with pipe-work, pumps, chemical injection and control systems.

Completion of the project is scheduled for mid-1985 and the finished plant will be controlled by a system of sophisticated, automated instrumentation.



The control building at Casino.

Leighton's contract represents the first stage of a three year scheme costing \$7 million, which will result in the complete reconstruction of the Casino water supply system.

The project team is led by Rob Davidson, and it includes project engineer Phil McDonald, surveyor John Ray, structural engineer Alan Hartog and pipework foreman Mark Stanton.

Outback houses

A housing contract valued at \$3,200,000 consisting of 25 brick veneer houses, three cluster houses and nine single persons quarters has been awarded to the W.A. branch.

The client is Argyle Diamond Mines Pty. Ltd., which is currently developing a mine some 160km from Kununurra.

The contract has five stages of completion, each with varying numbers of units, with final completion in December this year.

Tom Hall is project manager on site, and the successful tender was prepared by Frank Van Der Hoek.

over 1,000,000 bcy.

Five concrete retaining walls are required to support the design as the site is in sloping terrain. Green's contract also calls for paving the decks and ramps.

Howard Smith plans to have four bridging crews, a pile driving crew and a site preparation crew on the job by early this summer. Rick Rinehart will be the assistant project manager.

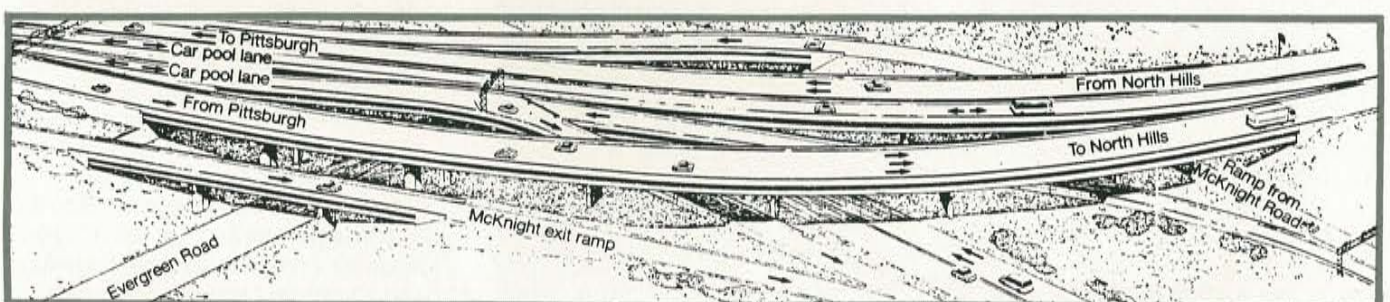
Major bridges contract in USA

Green Construction Company, which is 50% owned by Leighton, is the low bidder for a US\$23,222,000 major bridge project on Interstate 279 in Pittsburgh, Pennsylvania. This highly complex project entails the erection of six new multi-level bridges and the demolition of an existing bridge without interrupting the existing traffic flow.

It is the first contract in the master plan of thirteen that has been in the planning stage for nearly three decades. When completed in 1988, it will alleviate one of the major congestion problems in the Pittsburgh area.

Green's project manager, Howard Smith, expects to have a work force near 100 when the project gets into full swing. The equipment being selected includes two 100 ton cranes, a 75 ton and a 30 ton crane for bridge erection. The embankments and excavation work will be accomplished using CAT 637 scrapers.

Two of the bridge structures will have decks more than sixty feet wide and over 800 feet long. Another structure is a Y bridge design with a total of seven spans. The embankments to support all the structures will consume slightly



Transformation in

Little more than five years ago, Tai Po in Hong Kong was a quiet, bayside fishing village. Today pressures on housing and factory space in Hong Kong have caused the planners to expand Tai Po into a major industrial and residential district.

Leighton Asia has played a major role in the dramatic transformation with a long series of development contracts awarded by the Hong Kong Government.

To date Leighton has won contracts worth more than A\$47 million in this area of Hong Kong alone, having built such major facilities as the Tai Po Market Station, and the Island House complex of roads and

bridges, with ongoing projects including the D1 and D3 distributor roads and bridges and two stages of reclamation and seawall construction at the Tai Po Industrial Park.

Sewer too

Work on the distributor roads and bridges bypassing the town also involved constructing a two kilo-

metre long trunk sewer, which had to be installed up to 14 metres deep to overcome hydraulic problems. The problems of working at such depths were compounded by almost 18 months of extremely wet weather. At about the same time, the Leighton teams at Tai Po also were working on a huge industrial estate site being reclaimed from the harbour.

Despite tight deadlines and the poor weather conditions over the two years contract period, the staged handovers were all completed on or ahead of time.

Currently Leighton is working on another large reclamation for extension of the Tai Po Industrial Park.

Vast volume

Work involves about 350,000 cubic metres of dredging, 350,000 cubic metres of rock and other material for seawall construction, also placing 500,000 cubic metres of soft material for the reclamation area itself.

The job is, in fact, a negotiated contract which, according to Leighton Asia managing director John Hamilton, demonstrates "how precious rock and dirt is in Hong Kong".

The large amount of material coming in by barge is spoil from Leighton's contract to develop the huge site for Kohima Barracks on the other side of Hong Kong.

Advantages

Having the concurrent Tai Po contract provides the government with a very cost effective reclamation and provides Leighton Asia with a valuable additional contract in the highly competitive Hong Kong contracting market.

The material is brought from



The Tai Po roads and bridges, completed this month.

Contract manager Garry Ash.



Colin Jesse (right) discusses the Tai Po reclamation project with Leighton Asia managing director John Hamilton.

Hong Kong

Kohima on a 24 hour turnaround. For the total job, which has taken 12 months, Leighton has used a fleet of two dredges, eight bottom dump barges, six tug boats and five derrick lighters.

The rest of the fill for the job has also been obtained "fairly cheaply", according to site agent (project manager) Colin Jesse.

Initiative

"Much of it has been scavenged for us by our employees from basements and other excavations for nearby building projects.

"In fact, some of our staff have been extremely entrepreneurial. For example recently, seeing some trucks carrying material on its way to dumping point, they quickly diverted them to our site by offering cash on the spot for the fill.

"It is all very different to the ways we are used to in Australia, but that is the way things operate in Hong Kong," Colin said.

Site team

Others who have been working on the reclamation site include superintendent Arnie Pringle and senior engineer Jackie Liu.

Colin Jesse has also been leading the Leighton team at the Tai Po roads and bridges site where Garry Ash has been contracts manager, Eddie Ryan (superintendent), T.T. Wong (sub-agent), Max Ko (senior engineer), Keith Dang (senior surveyor) and Wickham Shek (senior quantity surveyor).



LEIGHTON

... and now work on roads and railways

Two public works contracts totaling A\$12.5 million have been awarded to Leighton (Asia) Ltd by the Hong Kong government.

The contracts are for roads and flyovers at Tuen Mun and for a new railway station at Tai Wai.

Difference

The station at Tai Wai will be quite unusual, for the railway tracks will be on top of the station. They will run along an embankment with the station beneath them at ground level. An acoustic concrete slab built under the station will minimise train noise for the people below.

To allow for the new construction the main line tracks were temporarily diverted 20 metres to the east under an advance contract. During the course of the current contract, rail traffic will be switched back to its original position over the station. Then, the diversion embankment and a two-span bridge

will be removed, to complete the station construction works.

Tai Wai Station will be the third substantial contract carried out by Leighton for the Kowloon-Canton Railway and the second station following the recently completed new station at Tai Po Market.

"The Tai Wai Station has resulted from Leighton obtaining its building licence from the Hong Kong Government during 1983," said John Hamilton, managing director.

Details

The fully airconditioned station will replace a temporary structure half a mile away. Leighton's contract calls for construction of a station building, subway, canopies and a maintenance building; plus landscape formation and laying the railway tracks.

Electrical and mechanical services such as air conditioning, fire ser-

Another contract at Tai Po

Leighton Asia has also won a contract to lay about 2.3km of 600mm diameter gas main for the Hong Kong & China Gas Co. Ltd. in the Tai Po area.

Although a relatively small contract, the extremely high quality required for the on-site welding of the gas pipes makes this a demanding job.

The contract will be completed by April 1985 with the pipe-laying works phased with associated civil works along the route, and only able to be carried out in stages.

Leighton's team, controlled by Colin Jesse, is undertaking excavation of pipe trenches, gas main installation, testing, backfilling and making good the existing formation.

vices equipment, lifts and escalators are also part of the contract.

Staff on this project comprises the "railways crew" from Tai Po Market Station of Ray Brewster (site agent), Keith Johnson (superintendent), Stephen Tsui (sub-agent), Terry Trenerry (senior quantity surveyor), Tanny Tsang (senior engineer) and superintendent Fatty Lee from the Shatin job.

Roads & bridges

The other contract, at Tuen Mun (the sixth contract to be awarded to Leighton in this area in as many years) requires Leighton to build an intersection, roads and flyovers within two years. John Hamilton said the work includes a 250-metre viaduct, underpass, pedestrian subway, retaining walls, roads and diversion of two major nullahs. It includes a considerable amount of H-shaped steel piling, which will be laid by Leighton's Piling Division.

The site staff comprises Alan Thorburn (site agent), Alan Fok (senior engineer), William Chu (engineer), Yung Yau Kuen (supervisor) and Lee Wai Ming (senior foreman).

Value management concepts advanced

To reinforce the use of value management techniques in Leighton, consultant Steve Kirk has been retained by Central Building Group to co-ordinate value management studies over the next three months.

A broad programme of work has been established and, to date, studies have been undertaken for the Queensland and NSW branches. Further studies are programmed for WA, Newcastle and Victoria, and are planned for all other branches, to ensure reinforcement of the techniques.



Steve Kirk.

The approach being taken on particular projects brings together the CBG core team, supplemented by branch staff (particularly the project manager and the estimating staff) together with appropriate consultants.

While the value management programme is well advanced, other projects will be considered on a constant review basis, whether the project be lump sum, tender, design and construct, or a negotiated contract in either building or civil work.

Further information concerning this programme, is available from Richard Dinham, chief architect, on (02) 925-6630.

Discussion on a recent project included (left to right) Bill Nappin (CBG services manager), D&C estimator Peter Young, CBG architect Damian Morgan, Brian Dawson (CBG building cost systems manager) and Leighton's chief architect, Richard Dinham.



Another safety award for W.A.

Dennis Moralee, a Leighton apprentice in Western Australia, has won the Merit Award given by the Industrial Foundation for Accident Prevention in this year's Safety Apprentice of the Year competition.

Dennis' award was gained from some 300 entries in the competition and it was presented to him by State Health Minister Barry Hodge.

Leighton's western branch has seven metal trade apprentices, and Dennis Moralee's award highlights the impact that safety training has in their apprenticeship.

This is the second consecutive year that a Leighton apprentice has won the Merit Award; last year's winner being Ron Wright.



Newcomers to Leighton

Victorian Branch

Noel Jenkin — administration officer, Victorian branch
Mikk Sepp, who has worked in Canada for 20 years — project manager for design and construct projects

Mark Van Rijn — Werribee project, engineering survey assistant

Don Fischer — general foreman, Erinbank High School project

Leon Lachal — cadet engineer

Dale Watson — Victorian branch trainee

Norm Gray — site clerk, Werribee and Melton sites

Arthur Evans — Melton project foreman (from Leighton in Hong Kong)

John Gilley — project engineer, Benalla project

Livio Pozzebbon — engineer, Chalmers site.

John Tait — surveyor on the Melton project

New South Wales

Tom Hall — Project manager

Colin Lindschau — Foreman

Graham Elderfield — Project manager

Leighton Newsletter is published every two months. Please send any contributions, with good quality photographs, to the editor Jackie Malouf, at Central Building Group, Leighton House, St. Leonards, NSW.