

A close-up photograph of a white ceramic teapot pouring a stream of clear, golden tea into a matching white ceramic cup. The teapot has a textured handle and a spout. The cup is filled with tea, and the liquid is captured mid-pour, creating ripples. The background is a soft-focus green and yellow, suggesting a natural setting. The text 'worldtea BUYER'S GUIDE' is overlaid on the right side of the image, with 'world' in green, 'tea' in orange, and 'BUYER'S GUIDE' in green. Below the title, it says 'FINAL EDITION • PRODUCT OF THE 2009 WORLD TEA CHAMPIONSHIP'. At the bottom, it says 'ANNOUNCING THE WINNERS OF THE 2009 WORLD TEA CHAMPIONSHIP' in white.

worldtea

BUYER'S GUIDE

FINAL EDITION • PRODUCT OF THE 2009 WORLD TEA CHAMPIONSHIP

**ANNOUNCING THE WINNERS OF THE
2009 WORLD TEA CHAMPIONSHIP**

Every year, we provide you
with a new opportunity to
turn over a new leaf.



worldteaexpo

SAVE THE DATE: JUNE 11–13, 2010
LAS VEGAS CONVENTION CENTER
HOST HOTEL: FONTAINEBLEAU
WWW.WORLDTEAEXPO.COM





CONTENTS

WELCOME	4
OVERVIEW & METHODOLOGY	5
CATEGORY DEFINITIONS	6
WINNERS' CIRCLE, HOT TEA CLASS	8
WINNERS' CIRCLE, ICED TEA CLASS	10
ENTRANTS, HOT TEA CLASS	11
ENTRANTS, ICED TEA CLASS	23



KIM JAGE
VP Sales & Marketing

Welcome!

In its second year, the World Tea Championship attracted 41 leading suppliers that entered nearly 300 different specialty teas for evaluation. Entrants included market leaders, as well as rising stars and notable newcomers that are collectively bound to take our industry by storm.

Within this edition of the World Tea Buyers Guide, a product of the World Tea Championship, you will find an overview of the competition, the categories for each class—hot and iced teas—category definitions and a listing of all the entrants.

All entrants deserve special recognition by our industry. Submitting products for a competition (and a young one at that) takes guts and fortitude. These companies stand behind their products, their quality and their service in an environment where it is increasingly difficult for buyers and consumers to distinguish quality tea from mere marketing. Because they trusted a third party to validate their product quality through blind, organoleptic analysis, these entrants establish themselves as leading reliable sources of specialty tea. We are lucky to have them driving and serving our industry.

I also want to congratulate and recognize our judges. Their seasoned palates, extensive experience, passion and patience fuel and shape this competition as it evolves into an event that elevates the awareness of specialty tea and provides clarity to the consumer—something we all need.

All hot tea judges—professional tea tasters and buyers with over a century of tea tasting experience among them—were flown to Las Vegas three days before the World Tea Expo. They spent two full days cupping submissions. This doesn't count the months of preparation judges spent defining class categories, methodology and cupping standards. Thank you.

Iced tea class judges—retailers and foodservice professionals—evaluated submissions the first day of the Expo before the show floor opened. Iced teas were a bit easier to evaluate and took little preparation other than coding glasses into which we poured the tea; nevertheless, tasting product while thinking through each characteristic's quality is difficult and time consuming. Luckily, it is also enlightening for the evaluators.

Collectively, all participants of the World Tea Championship are shaping an industry. This Buyer's Guide sheds some light on the process, but more importantly, it clarifies many tea definitions and the taste characteristics one should expect from a tea bearing a particular name.

We aim, like the U.S. wine industry did thirty years ago, to educate tea buyers and further increase awareness of the category.

So congratulations to all participants of the World Tea Championship and users of this Guide. You are making history.

Warm regards,

Kim Jage

OVERVIEW **worldtea** CHAMPIONSHIP

The World Tea Championship™ (WTC) is an independent competition, judged by professional cuppers and major retail buyers of tea, to distinguish the highest quality and best tasting teas commercially available in the North American marketplace. The event was open to exhibitors and sponsors of the 2009 World Tea Expo.

The WTC is made up of two classes: Hot Tea and Iced Tea. Each class consists of its own categories and judging panel. The Hot Tea class was evaluated April 30 and May 1, 2009. The Iced Tea class was evaluated the morning of May 2, 2009 prior to the opening of the World Tea Expo. All submissions were evaluated blind and through organoleptic analysis.

The highest quality and best tasting teas from each category were awarded 1st, 2nd and 3rd place positions. Awards for both classes were distributed and honored the evening of May 2, 2009 at the World Tea Expo, held May 2–May 4, 2009, at the Mandalay Bay Convention Center, Las Vegas, Nevada.

METHODOLOGY

■ HOT TEA CLASS

Hot Tea Class categories include Signature Famous Teas in the U.S. as well as general categories that enable lesser known teas to be highlighted and distinguished in the marketplace.



Entrants determined which categories (definitions follow) they wanted to submit teas into and submitted those samples to our offices the week of April 24, 2009. We then coded the samples on the packaging to conceal the identity of the submitting company and grouped each by entered category in tight storage.

Hot Tea Class Judges were flown to Las Vegas April 29, 2009 and for the

following two full days evaluated submissions. Strict standards were placed on the judging/ cupping processes and two outside coordinators ensured those standards were met.

■ ICED TEA CLASS

The Iced Tea Class was divided into categories according to its market application and sales channels: Foodservice; Freestyle and Ready-to-Drink. Each category was then separated into sub-categories to represent popular products currently being sold in the marketplace for that respective category.

The judging panels for both classes rated teas on the following characteristics: brewed color, brewed aroma, brewed flavor, brewed mouth-feel, and brewed harmony. Hot tea submissions were also judged on the dry leaf. Each tea also had to meet the minimum requirement of category definition as well. These ratings were then used to calculate an overall numerical value on a 100-point scale. This value is each tea's World Tea Rating.



WORLD TEA RATING™

The following guidelines can be used to interpret the resulting ratings:

- 96-100 RARE:** unique tea, difficult to replicate in future manufacturing processes
- 90-95 OUTSTANDING:** a distinctive tea with brilliant style
- 80-89 VERY GOOD:** a tea with superior characteristics
- 70-79 ABOVE AVERAGE:** a tea with particularly desirable qualities
- 60-69 MEDIOCRE:** a good tea, typical for its category
- 50-59 POOR:** not recommended

*A sincere note of appreciation
to our judging panel:*

Hot Tea Class

DAVID DE CANDIA
Senior Manager Tea/Master Tea Blender,
The Coffee Bean & Tea Leaf

ELIOT JORDAN
Director of Tea, Peet's Coffee & Tea

BRIAN KEATING
Publisher, Sage Group International

JANE PETTIGREW
Tea Specialist, Historian, Writer and Consultant

MIKE SPILLANE
President, G.S. Haly Company

DAVID WALKER
Consultant, Walker Tea

Cupping Coordinators

SUZETTE HAMMOND
Peet's Coffee & Tea

AARON VICK
G.S. Haly Company

Iced Tea Class: Ready-to-Drink and Foodservice

MICHAEL CARDENAS
Owner, Innovative Dining Group

DENNIS KNOCK
Commodity Manager, Frontier Natural Products

BILL MITCHELL
Grocery Team Leader, Whole Foods Market

BRYAN O'SHIELDS
Senior Vice President of Food & Beverage,
Fontainebleau

Iced Tea Class: Freestyle

SHERRY EVANS
Tea Sommelier, Author, The Aubrey Rose Tea Room

AMY LAWRENCE
President, An Afternoon to Remember

GUY MUNSCH
Owner, Zen Tara Teas

REVA SHAW
Owner, Teasosity, LLC

CATEGORY DEFINITIONS

■ HOT TEA CLASS, SIGNATURE FAMOUS TEAS

ASSAM: Black tea from Assam, India. Dry leaf is neat, well-twisted, with black, copper, and mahogany leaves that possibly include gold tips. Nose of dry leaf is malty, sweet, with hints of raisins, treacle and mild toast. Wet leaf is coppery in color, plump with a malty, slightly sweet aroma. Liquor is bright and clear, deeply colored amber with a full-bodied, rich, smooth, malty flavor, hints of sweetness and robust, yet pleasant astringency.

BREAKFAST BLEND: Black tea blend of any variety and origin astringent enough to add milk and sugar, but balanced enough to drink straight. Appearance of the dry leaf depends on the blend. Leaves should be well-twisted and include some tip. Wet leaf is brown, copper with a toasty to citrusy aroma. Liquor is bright and clear with rich, reddish-brown hues and a medium to full bodied, mouth-feel that is balanced, brisk and astringent with a tangy high note.

CEYLON: Black leaf tea from Sri Lanka. Dry leaf is variable, possibly including silver tips. Nose of dry leaf is mildly malty to citrusy with hints of biscuit. Wet leaf is olive to copper in color with a citrus, woody, even chocolate aroma. Liquor is brilliantly clear and bright honey color with brisk astringency and tangy, fresh flavors.

CHAI: Masala chai, a black tea with varying admixture of spices depending on region. Tea should be full and astringent enough to accept a heavy dilution of milk without losing its flavor profile. Appearance of leaf varies, but the nose is spicy with typical hints of cardamom, cinnamon, pepper and cloves; ideally, none is predominant. Wet leaf is coppery, bright and enticing with herbs and spices. Liquor is reddish in color and medium-bodied, with balanced flavor between spices and the tea base.

DARJEELING: Black tea from Darjeeling, India. Dry leaf is mixed brown, black and green leaf that may include silver tips. Nose of dry leaf is mildly floral, delicate and grassy. Wet leaf is colorful with a floral, clean, ripe muscatel aroma that hints of sweet hay. Liquor is clear, bright and can be greenish-gold to orange-brown in color. Liquor is complex, medium- to full-bodied, with a dry mouth-feel and floral, muscatel, fresh grass flavors, a brisk astringency and lingering finish.

DRAGON WELL: Longjing tea from Zhejiang Province, China. Dry leaf is neat, uniform, flat lime to dark green. Nose of the dry leaf is fresh and grassy with hints of sweet fruit. Wet leaf is plump, juicy, and uniform with buds and a vegetal, nutty aroma. Liquor is clear, vibrant and jade yellow in color with light hints of fruitiness and gentle, mellow plant notes. Liquor is light-bodied, buttery, smooth and slightly astringent with hints of peas and sweet-corn with the husk, and a nutty finish.

EARL GREY: Black tea of any variety and origin blended with bergamot citrus flavoring, oil or dried bergamot peel. Appearance of dry leaf depends on the blend. Bergamot oil is the predominant aroma with a fresh, pleasant citrus aroma on the wet leaves. Liquor is bright yellow to red, clear, slightly

spicy and well balanced between the flavor of the tea base and the bergamot.

JASMINE: Green tea from China or Taiwan traditionally jasmine scented without added flavoring, herbs or other agents. Dry leaf is variable. Nose of dry leaf is jasmine and mellow grassiness. Wet leaf also has a predominant natural jasmine aroma, but is balanced with the vegetal green tea base. Liquor is bright and clear, light-bodied and silvery yellow to golden green in color. Liquor is balanced, floral, sweet, grassy and slightly astringent.

KEEMUN: Black tea from Qi Men, Anhui Province, China. Dry leaf is small, black and neatly twisted leaves that possibly contain gold tips. Nose of the dry leaf is sweet, woody, with hints of toasted grain. Wet leaf is glistening dark copper with a woody aroma and hints of plum, raisins and dried roses. Liquor is clear with a medium tint and burnt orange to dark burgundy in color. Liquor is smooth, medium- to full-bodied, well-rounded with a soft astringency and floral with hints of toasted nuts and forest floor woodiness.

MATCHA: Ceremonial Japanese green tea manufactured from stone-ground tencha leaves. Color of tea powder is brilliant green, with a noticeably sweet, fresh aroma. There shouldn't be any shades of yellow or brown, which indicate stale, oxidized tea. The froth from the freshest, properly stored tea will be thick and creamy, with a brilliant green color. The taste is mild and vegetal sweet with no notes of raw astringency.

SENCHA: Green tea grown and processed in Japan. Dry leaf is flat, deep green with shiny, polished, needles. Nose of dry leaf is mildly grassy and sweet. Wet leaf is thick and deep, rich and green in color with a fresh, vegetal, ocean aroma. Liquor is bright green with little, if any, hints of yellow. The liquor is often not clear but may have solids in suspension that add to its flavor. Liquor is fresh, rich, medium- to full-bodied, with grassy and briny oceanic notes.

YUNNAN: Black tea from the Yunnan Province, China. Dry leaf is neatly twisted black, brown leaves that possibly contain gold tips. Nose of the dry leaf is likened to damp, autumn leaves. Wet leaf is plump, coppery and uniform with an earthy aroma that hints of vanilla and resin. Liquor is golden brown with a reddish tint and a round body with a complex flavor profile of honey, resin, a gentle peppery (zesty, not hot) spice and floral notes.

■ HOT TEA CLASS: GENERAL CATEGORIES

BLACK TEA: Black, fully oxidized tea of any variety and from any origin that does not meet the criteria for a Signature Famous Tea category.

BLENDED/FLAVORED BLACK TEA: Black tea of any variety and from any origin blended with herbs, fruits, essential oils, spices and/or other flavoring agents.

BLENDED/FLAVORED GREEN TEA: Green tea of any variety and from any origin blended with herbs, fruits, essential oils, spices and/or other flavoring agents.

BLENDED/FLAVORED HERBAL: Botanical (i.e., fruits, seeds, spices, herbs) infusion other than *Camellia sinensis* of any variety and from any origin blended with other herbs, fruits, essential oils, spices and/or other flavoring agents.

BLENDED/FLAVORED OOLONG TEA: Oolong tea of any variety and from any origin blended with herbs, fruits, essential oils, spices and/or other flavoring agents.

BLENDED/FLAVORED WHITE TEA: White tea of any variety and from any origin blended with herbs, fruits, essential oils, spices and/or other flavoring agents.

DARK OOLONG TEA: Medium oxidized oolong of any leaf shape and from any origin that yields amber to dark liquor.

DRY-FIRED GREEN TEA: Green tea of any variety and from any origin that is not first processed by steam and does not meet the criteria for a Signature Famous Tea category.

GREEN OOLONG TEA: Lightly oxidized oolong of any leaf shape and from any origin that yields clear green or golden liquor.

HERBAL: Single ingredient non-*Camellia sinensis* botanical (i.e., fruits, seeds, spices, herbs) infusion.

PUER TEA: Straight puer tea, green or dark, loose or compressed.

STEAMED GREEN TEA: Green tea of any variety and from any origin that is first processed by steam to denature the enzymes and does not meet the criteria for a Signature Famous Tea category.

TREASURE/DISPLAY/FLOWERING TEAS: Made of pure tea or may include flowers, herbs and/or flower scenting. Green, black, white, oolong or any hand-sewn tea may enter in this category.

WHITE TEA: Made according to classical styles of processing. Leaves are not processed by frying or rolling, but by withered controls and gentle oven, cool drying and/or sun drying techniques, alone or in combination.

■ ICED TEA CLASS

FOODSERVICE: Entries must be currently sold at a foodservice establishment and available in a typical 1oz., 2oz., 3oz. or 4oz. filter pouch or open brew bag. Consumer retail tea bags, entries in tins, and/or any packaging that does not meet this requirement is not considered Foodservice quality.

FREESTYLE: Any tea or herbal drink brewed and created fresh is considered Freestyle. Application is focused to tea room owners and tea retailers that can use the drink as freshly brewed iced tea in their store.

READY-TO-DRINK (RTD): Defined as pre-bottled or packaged drinks that require no further brewing. Powdered teas may be submitted in a typical individual sized bottle of water.

HOT TEACLASS WINNERS' CIRCLE



■■ SIGNATURE ■■ FAMOUS TEAS

■ ASSAM

1ST PLACE

Teas Etc.,
Assam Ditchu

2ND PLACE

TeaGschwendner USA,
Assam Marangi

3RD PLACE

Qtrade Teas & Herbs,
Satrupa SFTGFOP1

■ BREAKFAST BLEND

1ST PLACE

Rishi Tea, *Organic/ Fair Trade
China Breakfast*

2ND PLACE

Qtrade Teas & Herbs,
Smooth Breakfast

3RD PLACE

TeaGschwendner USA,
English Breakfast

■ CEYLON

1ST PLACE

Teas Etc., *Ceylon OP1*

2ND PLACE

Qtrade Teas & Herbs,
*New Vithanakande
FBOPF Extra Special*

3RD PLACE

TeaGschwendner USA,
Ceylon Uva Highlands

■ CHAI

1ST PLACE

Rishi Tea, *Organic/Fair Trade
Masala Chai*

2ND PLACE

Chamong, *Sewpur Assam
(Organic) Masala Chai*

3RD PLACE

TeaGschwendner USA,
Indian Chai

■ DARJEELING

1ST PLACE

Qtrade Teas & Herbs,
Jungpana Choice

2ND PLACE

TeaGschwendner USA,
*Darjeeling Risheehat
2nd Flush SFTGFOP1*

3RD PLACE

TeaGschwendner USA,
*Darjeeling Lingia
1st Flush SFTGFOP1*

■ DRAGONWELL

1ST PLACE

Rishi Tea,
Dragon Well Qingming

2ND PLACE

Rishi Tea,
Dragon Well Mingqian

3RD PLACE

Qtrade Teas & Herbs,
Spring Dragonwell

■ EARL GREY

1ST PLACE

TeaGschwendner USA,
Earl Grey No 69

2ND PLACE

Qtrade Teas & Herbs,
Earl Grey Grand

3RD PLACE

Rishi Tea,
*Organic/ Fair Trade
Earl Grey Supreme*

■ JASMINE

1ST PLACE

Rishi Tea,
Organic Jasmine Pearls

■ KEEMUN

1ST PLACE

Qtrade Teas & Herbs,
Sechrna

2ND PLACE

PeLi Teas,
Keemun Hao Ya

3RD PLACE

PeLi Teas,
Keemun Needle

■ MATCHA

1ST PLACE

Rishi Tea,
Matcha Houju

2ND PLACE

AIYA America Inc.,
Ceremonial Matcha

3RD PLACE

AOI Tea Company,
Matcha Supreme

■ SENCHA

1ST PLACE

Qtrade Teas & Herbs,
Sencha Spirit

2ND PLACE

Rishi Tea,
Sencha Superior

3RD PLACE

Rishi Tea,
Organic Sencha

■ YUNNAN

1ST PLACE

PeLi Teas,
Dian Hong (Special)

2ND PLACE

Teas Etc.,
*Golden Monkey
Organic*

3RD PLACE

Rishi Tea,
*Organic/ Fair Trade
Yunnan Golden Buds*

GENERAL CATEGORIES

BLACK TEA

1ST PLACE

PeLi Teas, *Zhenghe Golden Monkey (Special)*

2ND PLACE

SpecialTeas Inc.,
#510 Golden Monkey (*Fujian*)

3RD PLACE

Qtrade Teas & Herbs,
New Vithanakande Classic

BLENDED/FLAVORED BLACK TEA

1ST PLACE

TeaGschwendner USA,
Pineapple Mango

2ND PLACE

Qtrade Teas & Herbs,
Pangaea Extra Special

3RD PLACE

Rishi Tea, *Organic/Fair Trade Lemongrass Black*

BLENDED/FLAVORED GREEN TEA

1ST PLACE

Rishi Tea, *Sencha Yuzu*

2ND PLACE

Dethlefsen & Balk,
Goji/Blueberry/Pomegranate

3RD PLACE

Sugimoto USA, Inc
(SA Japanese Green Tea), *Genmai Cha*

BLENDED/FLAVORED HERBAL TEA

1ST PLACE

Rishi Tea, *Organic Cinnamon Plum*

2ND PLACE

TeaGschwendner USA,
Summer Romance

3RD PLACE

Rishi Tea, *Organic Unity*

BLENDED/FLAVORED OOLONG TEA

1ST PLACE

Naivetea,
Lychee Green Oolong

2ND PLACE

Qtrade Teas & Herbs,
Plum Oolong

3RD PLACE

Rishi Tea, *Plum Oolong*

BLENDED/FLAVORED WHITE TEA

1ST PLACE

Rishi Tea, *Organic Silver Needle Jasmine*

2ND PLACE

Rishi Tea, *Organic Silver Needle Osthmanthus*

3RD PLACE

Qtrade Teas & Herbs,
Island Dreams

DARK OOLONG TEA

1ST PLACE

PeLi Teas,
Fenghuang Dancong (Super)

2ND PLACE

TeaGschwendner USA,
Formosa Superior Choice

3RD PLACE

PeLi Teas,
Fenghuang Dancong (Special)

DRY-FIRED GREEN TEA

1ST PLACE

Amorepacific Corporation,
Irohyan of Sulloc Premium Tea

1ST PLACE

Qtrade Teas & Herbs,
Wuyang Chunyu

2ND PLACE

PeLi Teas,
Zhejiang Green Needle Tea

3RD PLACE

PeLi Teas,
Jingshan Tea (Special)

GREEN OOLONG TEA

1ST PLACE

Barnes & Watson Fine Teas,
Jade Oolong (Golden Leaf Selections)

2ND PLACE

PeLi Teas,
Ti Quan Yin (Super)

3RD PLACE

Rishi Tea,
Jade Oolong

HERBAL

1ST PLACE

Puripan Inc.,
Tartary Buckwheat

2ND PLACE

Rishi Tea, *Organic/Wild Schisandra Berry*

3RD PLACE

Puripan Inc.,
Mulberry Leaf

PUER

1ST PLACE

PeLi Teas, *Puer Tea (Special)*

2ND PLACE

Rishi Tea, *Organic/Fair Trade Puer Classic*

3RD PLACE

Rishi Tea,
Organic/Fair Trade Ancient Puer Palace

STEAMED GREEN TEA

1ST PLACE

Qtrade Teas & Herbs,
Yame Hon—Gyokuro

2ND PLACE

Rishi Tea, *GyoKuro*

3RD PLACE

Rishi Tea,
Organic Kukicha

TREASURE/DISPLAY/FLOWERING TEA

1ST PLACE

Tea Beyond,
L.T. Grade A Collection

2ND PLACE

Fujian Guang Fu Tea Co.,
Ltd, Royal Lily

3RD PLACE

TeaGschwendner USA,
China Yin Zhen Flowering

WHITE TEA

1ST PLACE

Rishi Tea,
Organic Silver Needle

2ND PLACE

Two Hills Tea Ltd.,
Organic Silver Needle

3RD PLACE

Fujian Guang Fu Tea Co., Ltd,
Silver Needle

worldtea CHAMPIONSHIP

ICED

TEACLASS

WINNERS' CIRCLE



FOODSERVICE

FLAVORED BLACK

1ST PLACE

Rishi Tea, *Organic/Fair Trade Summer Lemon*

2ND PLACE

Art of Tea, *Passion Fruit Jasmine*

3RD PLACE

Shangri La Tea Company, *Porganic Maple Caramel Iced Tea*

FLAVORED GREEN

1ST PLACE

Shangri La Tea Company, *Organic Ambrosia Green Iced Tea*

1ST PLACE

Sungarden Specialty Tea, *Organic Serene Green Citrus Iced Tea*

2ND PLACE

Rishi Tea, *Organic/Fair Trade Citron Green*

3RD PLACE

Walters Bay Bogawantalawa Estates, *Walters Bay Mint Green Iced Tea*

FLAVORED HERBAL

1ST PLACE

Rishi Tea, *Organic/Fair Trade Tropical Crimson*

2ND PLACE

Sungarden Specialty Tea, *Organic Berry White Iced Tea*

3RD PLACE

Rishi Tea, *Organic/Fair Trade Blueberry Red*

UNFLAVORED BLACK

1ST PLACE

Shangri La Tea Company, *Natural Organic Black Iced Tea*

2ND PLACE

International Tea Importers, *100% Nilgiri Ice Tea Blend*

3RD PLACE

Walters Bay Bogawantalawa Estates, *Walters Bay Black Iced Tea*

UNFLAVORED GREEN

1ST PLACE

Shangri La Tea Company, *Natural Organic Green Iced Tea*

2ND PLACE

Art of Tea, *Liquid Jade*

3RD PLACE

Walters Bay Bogawantalawa Estates, *Walters Bay Green Iced Tea*

BEST VALUE

Walters Bay Bogawantalawa Estates, *Walters Bay Black Iced Tea*

FREESTYLE

HERBAL

1ST PLACE

Puripan Inc., *TEA IN A JAR—ALOE VERA*

2ND PLACE

Qtrade Teas & Herbs, *Rosa de Jamaica*

3RD PLACE

Puripan Inc., *TEA IN A JAR—GINGER*

TEA

1ST PLACE

Barnes & Watson Fine Teas, *Iron Buddha and the Flower*

2ND PLACE

AIYA America Inc., *Black Tea Pre-Mix*

BEST PRESENTATION

Puripan Inc., *TEA IN A JAR—ALOE VERA*

READY-TO-DRINK

FLAVORED BLACK

1ST PLACE

MarketSpice, *MarketSpice Signature Blend*

2ND PLACE

MarketSpice, *Pomegranate Splash*

3RD PLACE

ITO EN, *TEAS' TEA Naturally Sweet—Citrus Black*

FLAVORED GREEN

1ST PLACE

ITO EN, *Jasmine Green Tea*

2ND PLACE

Wegmans, *Just Tea—Green Jasmine*, manufactured by ITO EN

SWEETENED GREEN

1ST PLACE

Tazo Tea, *Tazo Organic Iced Green*

2ND PLACE

KimBees Gourmet Sweet Tea, *KimBees Lemon-Raspberry Gourmet*

3RD PLACE

KimBees Gourmet Sweet Tea, *KimBees Almond Gourmet Sweet*

UNFLAVORED BLACK

1ST PLACE

Adagio Teas, *Anteadote Organic Black Tea*

2ND PLACE

Wegmans, *Just Tea—Black*, manufactured by ITO EN

UNFLAVORED GREEN

1ST PLACE

ITO EN, *Oi Ocha Dark*

2ND PLACE

Wegmans, *Just Tea—Green*, manufactured by ITO EN

3RD PLACE

La Crème Coffee & Tea, *La Crème 100% Organic Unsweetened Green Tea*

UNFLAVORED OOLONG

1ST PLACE

ITO EN, *Oolong Shot*

2ND PLACE

Wegmans, *Just Tea—Oolong*, manufactured by ITO EN

3RD PLACE

Adagio Teas, *Anteadote Organic Oolong Tea*

BEST PACKAGING

KimBees Gourmet Sweet Tea, *KimBees Lemon-Raspberry Gourmet*

HOT TEACLASS



■ SIGNATURE FAMOUS TEAS: ASSAM

2009
worldtea
CHAMPION

**Teas Etc.,
Assam Ditchu**

**1ST PLACE
RATING: 83**

MSRP: \$13.95/4 oz.
Origin: India, 2008
Beth Johnston
phone: 561-683-6838
beth@teasetc.com
www.teasetc.com

**TeaGschwendner USA,
Assam Marangi**

**2ND PLACE
RATING: 81**

MSRP: \$28.22/4 oz.
Origin: India, 2008
Nicole Smith
phone: 847-229-4535
nsmith@teamerchants.com
www.teamerchants.com

**Qtrade Teas & Herbs,
Satrupa SFTGFOP1**

**3RD PLACE
RATING: 76**

MSRP: \$10.00/4 oz.
Origin: India, 2009
Manjiv Jayakumar
phone: 949-766-0070
manjiv@qtradeteas.com
www.qtradeteas.com

■ SIGNATURE FAMOUS TEAS: BREAKFAST BLEND

2009
worldtea
CHAMPION

**Rishi Tea, Organic/Fair Trade
China Breakfast**

**1ST PLACE
RATING: 81**

MSRP: \$8.00/4 oz.
Origin: China, 2008
Benjamin Harrison
phone: 414-747-4001
benjamin@rishi-tea.com
www.rishi-tea.com

**Qtrade Teas & Herbs,
Smooth Breakfast**

**2ND PLACE
RATING: 80**

MSRP: \$10.00/4 oz.
Origin: Multiple, 2009
Manjiv Jayakumar
phone: 949-766-0070
manjiv@qtradeteas.com
www.qtradeteas.com

**TeaGschwendner USA,
English Breakfast**

**3RD PLACE
RATING: 78**

MSRP: \$7.82/4 oz.
Origin: Sri Lanka, India, 2008
Nicole Smith
phone: 847-229-4535
nsmith@teamerchants.com
www.teamerchants.com

**Art of Tea,
Classic Black**

RATING: 76

MSRP: \$10.00/4 oz.
Origin: U.S.A., 2008
Steve Schwartz
phone: 310-765-7460
steve@artoftea.com
www.artoftea.com

**Lyster Group,
Safari Pure Tea**

RATING: 74

MSRP: \$4.00/4 oz.
Origin: Kenya, 2008
Patrick Tonui
phone: 443-857-5491
tonuipk@gmail.com
www.lystergroup.com

■ SIGNATURE FAMOUS TEAS: CEYLON

2009
worldtea
CHAMPION

**Teas Etc.,
Ceylon OP1**

**1ST PLACE
RATING: 85**

MSRP: \$8.95/4 oz.
Origin: Sri Lanka, 2009
Beth Johnston
phone: 561-683-6838
beth@teasetc.com
www.teastec.com

**Qtrade Teas & Herbs,
New Vithanakande
FBOPF Extra Special**

**2ND PLACE
RATING: 84**

MSRP: \$10.00/4 oz.
Origin: Sri Lanka, 2009
Manjiv Jayakumar
phone: 949-766-0070
manjiv@qtradeteas.com
www.qtradeteas.com

**TeaGschwendner USA,
Ceylon Uva Highlands**

**3RD PLACE
RATING: 82**

MSRP: \$13.48/4 oz.
Origin: Sri Lanka, 2008
Nicole Smith
phone: 847-229-4535
nsmith@teamerchants.com
www.teamerchants.com

■ SIGNATURE FAMOUS TEAS: CHAI

2009
worldtea
CHAMPION

**Rishi Tea, Organic/Fair Trade
Masala Chai**

**1ST PLACE
RATING: 82**

MSRP: \$10.00/4 oz.
Origin: U.S.A., 2008
Benjamin Harrison
phone: 414-747-4001
benjamin@rishi-tea.com
www.rishi-tea.com

**Chamong, Sewpur Assam (Organic)
Masala Chai**

**2ND PLACE
RATING: 77**

MSRP: \$4.00/4 oz.
Origin: India, 2009
Mayank Bansal
phone: 215-550-4710
mb@chamongtea.com
www.chamongtea.com

**TeaGschwendner USA,
Indian Chai**

**3RD PLACE
RATING: 76**

MSRP: \$10.08/4 oz.
Origin: India, 2008
Nicole Smith
phone: 847-229-4535
nsmith@teamerchants.com
www.teamerchants.com

**Qtrade Teas & Herbs,
Super Chai**

RATING: 74

MSRP: \$10.00/4 oz.
Origin: Multiple, 2009
Manjiv Jayakumar
phone: 949-766-0070
manjiv@qtradeteas.com
www.qtradeteas.com

■ SIGNATURE FAMOUS TEAS: DARJEELING

2009
worldtea
CHAMPION

**Qtrade Teas & Herbs,
Jungpana Choice**

**1ST PLACE
RATING: 82**

MSRP: \$20.00/4 oz.
Origin: India, 2008
Manjiv Jayakumar
phone: 949-766-0070
manjiv@qtradeteas.com
www.qtradeteas.com

**TeaGschwendner USA, Darjeeling
Rishiehat 2nd Flush SFTGFOP1****2ND PLACE
RATING: 80**MSRP: \$28.22/4 oz.
Origin: India, 2008
Nicole Smith
phone: 847-229-4535
nsmith@teamerchants.com
www.teamerchants.com**TeaGschwendner USA, Darjeeling
Lingia First Flush SFTGFOP1****3RD PLACE
RATING: 77**MSRP: \$32.75/4 oz.
Origin: India, 2008
Nicole Smith
phone: 847-229-4535
nsmith@teamerchants.com
www.teamerchants.com**Glenburn Tea Estate,
Glenburn First Flush****RATING: 76**MSRP: NA/4 oz.
Origin: India, 2009
Shalini Agarwal
phone: 949-232-9974
shalini072@yahoo.com
www.glenburnteaestate.com**Dethlefsen & Balk,
Monteviot First Flush****RATING: 75**MSRP: \$19.90/4 oz.
Origin: India, 2009
Sascha Karimpour
phone: 630-851-8549
info@dethlefsen-balk.us
www.dethlefsen-balk.us**Chamong, Chamong
(100% Organic) FTGFOP1 Clonal****RATING: 65**MSRP: \$45.00/4 oz.
Origin: India, 2009
Mayank Bansal
phone: 215-550-4710
mb@chamongtea.com
www.chamongtea.com

■ SIGNATURE FAMOUS TEAS: DRAGONWELL

2009
worldtea
CHAMPION**Rishi Tea,
Dragon Well Qingming****1ST PLACE
RATING: 87**MSRP: \$41.00/4 oz.
Origin: China, 2009
Benjamin Harrison
phone: 414-747-4001
benjamin@rishi-tea.com
www.rishi-tea.com**Rishi Tea,
Dragon Well Mingqian****2ND PLACE
RATING: 86**MSRP: \$49.00/4 oz.
Origin: China, 2009
Benjamin Harrison
phone: 414-747-4001
benjamin@rishi-tea.com
www.rishi-tea.com**Qtrade Teas & Herbs,
Spring Dragonwell****3RD PLACE
RATING: 83**MSRP: \$25.00/4 oz.
Origin: China, 2009
Manjiv Jayakumar
phone: 949-766-0070
manjiv@qtradeteas.com
www.qtradeteas.com**Peli Teas,
Westlake Dragonwell (Fine)****RATING: 82**MSRP: \$79.00/4 oz.
Origin: China, 2009
Mitchel Noble
phone: 323-651-2282
mitchel.noble@peliteas.com
www.peliteas.com**Peli Teas,
Westlake Dragonwell (Special)****RATING: 80**MSRP: \$79.00/4 oz.
Origin: China, 2009
Mitchel Noble
phone: 323-651-2282
mitchel.noble@peliteas.com
www.peliteas.com**Teas Etc., Dragon Well****RATING: 79**MSRP: \$24.95/4 oz.
Origin: China, 2008
Beth Johnston
phone: 561-683-6838
beth@teasetc.com
www.teasetc.com**Barnes & Watson Fine Teas,
Long Jing (Golden Leaf Selections)****RATING: 78**MSRP: \$51.00/4 oz.
Origin: China, 2008
Ken Rudee
phone: 206-625-9435
ken@bwtea.com
www.barnesandwatson.com**TeaGschwendner USA,
China Lung Ching****RATING: 74**MSRP: \$14.62/4 oz.
Origin: China, 2008
Nicole Smith
phone: 847-229-4535
nsmith@teamerchants.com
www.teamerchants.com

■ SIGNATURE FAMOUS TEAS: EARL GREY

2009
worldtea
CHAMPION**TeaGschwendner USA,
Earl Grey No 69****1ST PLACE
RATING: 84**MSRP: \$10.08/4 oz.
Origin: China, India, Sri Lanka, 2008
Nicole Smith
phone: 847-229-4535
nsmith@teamerchants.com
www.teamerchants.com**Qtrade Teas & Herbs,
Earl Grey Grand****2ND PLACE
RATING: 82**MSRP: \$12.00/4 oz.
Origin: Multiple, 2009
Manjiv Jayakumar
phone: 949-766-0070
manjiv@qtradeteas.com
www.qtradeteas.com**Rishi Tea, Organic/Fair Trade
Earl Grey Supreme****3RD PLACE
RATING: 78**MSRP: \$12.00/4 oz.
Origin: U.S.A., 2008
Benjamin Harrison
phone: 414-747-4001
benjamin@rishi-tea.com
www.rishi-tea.com**Art of Tea,
Earl Grey Crème****RATING: 77**MSRP: \$13.50/4 oz.
Origin: U.S.A., 2008
Steve Schwartz
phone: 310-765-7460
steve@artoftea.com
www.artoftea.com**Rishi Tea, Organic/Fair Trade
Earl Grey****RATING: 77**MSRP: \$9.00/4 oz.
Origin: U.S.A., 2008
Benjamin Harrison
phone: 414-747-4001
benjamin@rishi-tea.com
www.rishi-tea.com**SpecialTeas Inc.,
#828 Parisienne Soiree****RATING: 77**MSRP: \$7.95/4 oz.
Origin: China, 2008
Juergen Link
phone: 203-610-8600
link@specialteas.com
www.specialteasinc.com

■ SIGNATURE FAMOUS TEAS: JASMINE



Rishi Tea,
Organic Jasmine Pearls
1ST PLACE
RATING: 84

MSRP: \$22.50/4 oz.
Origin: China, 2008
Benjamin Harrison
phone: 414-747-4001
benjamin@rishi-tea.com
www.rishi-tea.com

Rishi Tea, Organic/Fair Trade
Jasmine Green Tea

RATING: 74
MSRP: \$9.00/4 oz.
Origin: China, 2008
Benjamin Harrison
phone: 414-747-4001
benjamin@rishi-tea.com
www.rishi-tea.com

TeaGschwendner USA,
China Royal Jasmine Curls

RATING: 72
MSRP: \$25.94/4 oz.
Origin: China, 2008
Nicole Smith
phone: 847-229-4535
nsmith@teamerchants.com
www.teamerchants.com

Peli Teas,
Silver Needle Jasmine Tea

RATING: 58
(Score was reduced for a white tea
entered in a green tea category)
MSRP: \$27.00/4 oz.
Origin: China, 2008
Mitchel Noble
phone: 323-651-2282
mitchel.noble@peliteas.com
www.peliteas.com

Qtrade Teas & Herbs,
Jasmine Silver Needle

RATING: 58
(Score was reduced for a white tea
entered in a green tea category)
MSRP: \$20.00/4 oz.
Origin: China, 2009
Manjiv Jayakumar
phone: 949-766-0070
manjiv@qtradeteas.com
www.qtradeteas.com

Empire International,
Tasseo Java Jasmine

RATING: 55
MSRP: \$8.00/20 ct box
Origin: Indonesia, 2009
Eri Mardanus
phone: 909-923-8588
empintern@yahoo.com
www.empire-international.com

■ SIGNATURE FAMOUS TEAS: KEEMUN



Qtrade Teas & Herbs,
Sechrna
1ST PLACE
RATING: 87

MSRP: \$15.00/4 oz.
Origin: China, 2009
Manjiv Jayakumar
phone: 949-766-0070
manjiv@qtradeteas.com
www.qtradeteas.com

Peli Teas, Keemun Hao Ya

2ND PLACE
RATING: 84
MSRP: \$19.00/4 oz.
Origin: China, 2008
Mitchel Noble
phone: 323-651-2282
mitchel.noble@peliteas.com
www.peliteas.com

Peli Teas, Keemun Needle

3RD PLACE
RATING: 83
MSRP: \$23.00/4 oz.
Origin: China, 2008
Mitchel Noble
phone: 323-651-2282
mitchel.noble@peliteas.com
www.peliteas.com

Rishi Tea, Keemun Royal

RATING: 82
MSRP: \$76.00/4 oz.
Origin: China, 2008
Benjamin Harrison
phone: 414-747-4001
benjamin@rishi-tea.com
www.rishi-tea.com

TeaGschwendner USA,
China Keemun Finest Chuen Cha

RATING: 80
MSRP: \$13.48/4 oz.
Origin: China, 2008
Nicole Smith
phone: 847-229-4535
nsmith@teamerchants.com
www.teamerchants.com

Peli Teas, Keemun Maofeng

RATING: 73
MSRP: \$29.00/4 oz.
Origin: China, 2008
Mitchel Noble
phone: 323-651-2282
mitchel.noble@peliteas.com
www.peliteas.com

Two Hills Tea Ltd., Organic
Black Dragon Pearl Tea

RATING: 73
MSRP: \$40.00/4 oz.
Origin: China, 2008
Haizhen Vission
phone: 250-352-6862
haizhen@twohillstea.com
www.twohillstea.com

■ SIGNATURE FAMOUS TEAS: MATCHA



Rishi Tea,
Matcha Houju
1ST PLACE
RATING: 94

MSRP: \$155.00/50 grams
Origin: Japan, 2008
Benjamin Harrison
phone: 414-747-4001
benjamin@rishi-tea.com
www.rishi-tea.com

AIYA America Inc.,
Ceremonial Matcha

2ND PLACE
RATING: 88
MSRP: \$49.00/4 oz.
Origin: Japan, 2008
Jon Baumgardner
phone: 310-212-1395
jbaumgardner@aiya-america.com
www.aiya-america.com

AOI Tea Company,
Matcha Supreme

3RD PLACE
RATING: 87
MSRP: \$28.99/30 grams
Origin: Japan, 2008
Chieko Yamamoto
phone: 714-841-2716
info@aoitea.com
www.aoitea.com

AIYA America Inc.,
Premium Matcha

RATING: 86
MSRP: \$119.00/4 oz.
Origin: Japan, 2008
Jon Baumgardner
phone: 310-212-1395
jbaumgardner@aiya-america.com
www.aiya-america.com

DoMatcha Japanese Green Tea,
DoMatcha Ceremonial Tea

RATING: 86
MSRP: \$104.00/4 oz.
Origin: Japan, 2008
Calli O'Brien
phone: 604-737-2581
callio@portal.com
www.domatcha.com

Rishi Tea, Matcha Rishi

RATING: 84
MSRP: \$18.99/20 grams
Origin: Japan, 2008
Benjamin Harrison
phone: 414-747-4001
benjamin@rishi-tea.com
www.rishi-tea.com

**TeaGschwendner USA,
Japan Matcha Hikari****RATING: 81**

MSRP: \$226.52/4 oz.
Origin: Japan, 2008
Nicole Smith
phone: 847-229-4535
nsmith@teamerchants.com
www.teamerchants.com

**Qtrade Teas & Herbs,
Matcha Chiyonoshiro****RATING: 80**

MSRP: \$50.00/4 oz.
Origin: Japan, 2009
Manjiv Jayakumar
phone: 949-766-0070
manjiv@qtradeteas.com
www.qtradeteas.com

■ SIGNATURE FAMOUS TEAS: SENCHA

2009
worldtea
CHAMPION**Qtrade Teas & Herbs,
Sencha Spirit****1ST PLACE
RATING: 89**

MSRP: \$40.00/4 oz.
Origin: Japan, 2009
Manjiv Jayakumar
phone: 949-766-0070
manjiv@qtradeteas.com
www.qtradeteas.com

Rishi Tea, Sencha Superior**2ND PLACE
RATING: 85**

MSRP: \$14.00/4 oz.
Origin: Japan, 2008
Benjamin Harrison
phone: 414-747-4001
benjamin@rishi-tea.com
www.rishi-tea.com

Rishi Tea, Organic Sencha**3RD PLACE
RATING: 83**

MSRP: \$30.87/4 oz.
Origin: Japan, 2008
Benjamin Harrison
phone: 414-747-4001
benjamin@rishi-tea.com
www.rishi-tea.com

AOI Tea Company, Sencha**RATING: 82**

MSRP: \$22.00/4 oz.
Origin: Japan, 2008
Chieko Yamamoto
phone: 714-841-2716
info@aoitea.com
www.aoitea.com

Maeda-en, USA, Sencha**RATING: 81**

MSRP: \$35.00/4 oz.
Origin: Japan, 2008
Ila Nguyen
phone: 949-226-2868
inguyen@maeda-en.com
www.maeda-en.com

**ITO EN,
Organic Kagoshima
Sencha Premium****RATING: 80**

MSRP: \$44.00/4 oz.
Origin: Japan, 2008
Yoshie Yano-Pennings
phone: 718-250-4024
yyano@itoen.com
www.itoen.com

**ITO EN,
Megami Sencha****RATING: 79**

MSRP: \$22.00/4 oz.
Origin: Japan, 2008
Yoshie Yano-Pennings
phone: 718-250-4024
yyano@itoen.com
www.itoen.com

**Sugimoto USA, Inc
(SA Japanese Green Tea),
Sen cha****RATING: 77**

MSRP: \$19.32/4 oz.
Origin: Japan, 2008
Kyohei Sugimoto
phone: 206-774-0905
kyohei@sugimotousa.com
www.sugimotousa.com

**TeaGschwendner USA,
Japan Sencha Extra Fine****RATING: 76**

MSRP: \$22.55/4 oz.
Origin: Japan, 2008
Nicole Smith
phone: 847-229-4535
nsmith@teamerchants.com
www.teamerchants.com

■ SIGNATURE FAMOUS TEAS: YUNNAN

2009
worldtea
CHAMPION**PeLi Teas, Dian Hong
(Special)****1ST PLACE
RATING: 85**

MSRP: \$20.00/4 oz.
Origin: China, 2008
Mitchel Noble
phone: 323-651-2282
mitchel.noble@peliteas.com
www.peliteas.com

**Teas Etc.,
Golden Monkey Organic****2ND PLACE
RATING: 84**

MSRP: \$22.95/4 oz.
Origin: China, 2008
Beth Johnston
phone: 561-683-6838
beth@teasetc.com
www.teasetc.com

**Rishi Tea, Organic/Fair Trade
Yunnan Golden Buds****3RD PLACE
RATING: 82**

MSRP: \$39.50/4 oz.
Origin: China, 2008
Benjamin Harrison
phone: 414-747-4001
benjamin@rishi-tea.com
www.rishi-tea.com

**Qtrade Teas & Herbs,
Classic Golden Yunnan****RATING: 80**

MSRP: \$20.00/4 oz.
Origin: China, 2009
Manjiv Jayakumar
phone: 949-766-0070
manjiv@qtradeteas.com
www.qtradeteas.com

**Rishi Tea, Organic/Fair Trade
Golden Yunnan****RATING: 79**

MSRP: \$12.00/4 oz.
Origin: China, 2008
Benjamin Harrison
phone: 414-747-4001
benjamin@rishi-tea.com
www.rishi-tea.com

**TeaGschwendner USA,
China Yunnan Golden Downy Pekoe****RATING: 79**

MSRP: \$12.35/4 oz.
Origin: China, 2008
Nicole Smith
phone: 847-229-4535
nsmith@teamerchants.com
www.teamerchants.com

■ GENERAL CATEGORIES: BLACK TEA

2009
worldtea
CHAMPION**PeLi Teas, Zhenghe
Golden Monkey (Special)****1ST PLACE
RATING: 87**

MSRP: \$39.00/4 oz.
Origin: China, 2008
Mitchel Noble
phone: 323-651-2282
mitchel.noble@peliteas.com
www.peliteas.com

**SpecialTeas Inc.,
#510 Golden Monkey (Fujian)****2ND PLACE
RATING: 86**

MSRP: \$15.95/4 oz.
Origin: China, 2008
Juergen Link
phone: 203-610-8600
link@specialteas.com
www.specialteasinc.com

**Qtrade Teas & Herbs,
New Vithanakande Classic****3RD PLACE
RATING: 83**MSRP: \$10.00/4 oz.
Origin: Sri Lanka, 2009
Manjiv Jayakumar
phone: 949-766-0070
manjiv@qtradeteas.com
www.qtradeteas.com**Adagio Teas,
Golden Spring****RATING: 82**MSRP: \$19.00/4 oz.
Origin: China, 2008
Michael Cramer
phone: 973-253-7400
michael@adagio.com
www.adagioxl.com**PeLi Teas, Bailin
Red Needle (Special)****RATING: 82**MSRP: \$36.00/4 oz.
Origin: China, 2008
Mitchel Noble
phone: 323-651-2282
mitchel.noble@peliteas.com
www.peliteas.com**PeLi Teas,
Lapsang Souchong (Special)****RATING: 82**MSRP: \$23.00/4 oz.
Origin: China, 2008
Mitchel Noble
phone: 323-651-2282
mitchel.noble@peliteas.com
www.peliteas.com**Qtrade Teas & Herbs,
Chamraj OP****RATING: 82**MSRP: \$8.00/4 oz.
Origin: India, 2009
Manjiv Jayakumar
phone: 949-766-0070
manjiv@qtradeteas.com
www.qtradeteas.com**Glenworth Estate Limited,
Black SFTGFOP****RATING: 81**MSRP: NA
Origin: India, 2009
Yogesh Marimuthu
phone: 562-942-9828
yogesh@shangrilaicedtea.com**PeLi Teas,
Panyong Golden Needle****RATING: 81**MSRP: \$24.00/4 oz.
Origin: China, 2008
Mitchel Noble
phone: 323-651-2282
mitchel.noble@peliteas.com
www.peliteas.com**Vietnam Tea Association,
Black Tea OPA—Vinatea****RATING: 79**MSRP: \$5.10/4 oz.
Origin: Vietnam, 2009
Hong Nguyen
phone: 84983313668
vitas@fpt.vn; teatrade@fpt.vn
www.vitas.org.vn**Barnes & Watson Fine Teas,
Lapsang Souchong****RATING: 78**MSRP: \$30.00/4 oz.
Origin: China, 2008
Ken Rudee
phone: 206-625-9435
ken@bwtea.com
www.barnesandwatson.com**TeaGschwendner USA,
Vietnam Yen Bai OP****RATING: 78**MSRP: \$11.22/4 oz.
Origin: Vietnam, 2008
Nicole Smith
phone: 847-229-4535
nsmith@teamerchants.com
www.teamerchants.com**Vietnam Tea Association,
Black Tea OP—Vinatea****RATING: 78**MSRP: \$6.30/4 oz.
Origin: Vietnam, 2009
Hong Nguyen
phone: 84983313668
vitas@fpt.vn; teatrade@fpt.vn
www.vitas.org.vn**TeaGschwendner USA,
North India Manjee Valley
First Flush SFTGFOP1****RATING: 59**MSRP: \$18.02/4 oz.
Origin: India, 2008
Nicole Smith
phone: 847-229-4535
nsmith@teamerchants.com
www.teamerchants.com**GENERAL CATEGORIES:
BLENDED/FLAVORED BLACK TEA****TeaGschwendner USA,
Pineapple Mango****1ST PLACE
RATING: 77**MSRP: \$10.08/4 oz.
Origin: Germany, 2008
Primary Ingredient/Flavor:
Pineapple Mango
Nicole Smith
phone: 847-229-4535
nsmith@teamerchants.com
www.teamerchants.com**Qtrade Teas & Herbs,
Pangaea Extra Special****2ND PLACE
RATING: 76**MSRP: \$10.00/4 oz.
Origin: Multiple, 2009
Primary Ingredient/Flavor: Cacao
Manjiv Jayakumar
phone: 949-766-0070
manjiv@qtradeteas.com
www.qtradeteas.com**Rishi Tea, Organic/Fair Trade
Lemongrass Black****3RD PLACE
RATING: 75**MSRP: \$10.00/4 oz.
Origin: U.S.A., 2008
Primary Ingredient/Flavor: Citrus
Benjamin Harrison
phone: 414-747-4001
benjamin@rishi-tea.com
www.rishi-tea.com**Dethlefsen & Balk,
Pomegranate/Cranberry****RATING: 74**MSRP: \$9.40/4 oz.
Origin: China, 2008
Primary Ingredient/Flavor: Black Tea
Sascha Karimpour
phone: 630-851-8549
info@dethlefsen-balk.us
www.dethlefsen-balk.us**TeaGschwendner USA,
Anna's****RATING: 74**MSRP: \$10.08/4 oz.
Origin: Germany, 2008
Primary Ingredient/Flavor:
Raspberry Yogurt
Nicole Smith
phone: 847-229-4535
nsmith@teamerchants.com
www.teamerchants.com**Rishi Tea, Organic/Fair Trade
Wild Berry Black****RATING: 73**MSRP: \$12.00/4 oz.
Origin: U.S.A., 2008
Primary Ingredient/Flavor: Berries
Benjamin Harrison
phone: 414-747-4001
benjamin@rishi-tea.com
www.rishi-tea.com**Empire International,
Tasseo Irresistible Peach****RATING: 72**MSRP: \$8.00/20 ct box
Origin: Indonesia, 2009
Primary Ingredient/Flavor:
Black Tea
Eri Mardanus
phone: 909-923-8588
empintern@yahoo.com
www.empire-international.com

**TeaGschwendner USA,
Flower of Hawaii****RATING: 71**

MSRP: \$10.08/4 oz.
Origin: Germany, 2008
Primary Ingredient/Flavor:
Pineapple Apricot
Nicole Smith
phone: 847-229-4535
nsmith@teamerchants.com
www.teamerchants.com

**Harney & Sons Fine Teas,
Hot Cinnamon Spice****RATING: 69**

MSRP: \$6.50/4 oz.
Origin: U.S.A., 2008
Primary Ingredient/Flavor:
Cinnamon
Lisa Prindle
phone: 518-789-2410
lisa@harneyteas.com
www.harney.com

**The East Indies Tea Company,
Pu-erh Spice Bazaar****RATING: 69**

MSRP: \$7.50/4 oz.
Origin: China, 2008
Primary Ingredient/Flavor:
Spice Blend
Mim Enck
phone: 717-228-2000
mstea@paonline.com
www.eastindiescoffeeandtea.com

**The East Indies Tea Company,
Indian Summer****RATING: 68**

MSRP: \$7.50/4 oz.
Origin: China, 2008
Primary Ingredient/Flavor:
Chocolate/Spice
Mim Enck
phone: 717-228-2000
mstea@paonline.com
www.eastindiescoffeeandtea.com

**■ GENERAL CATEGORIES:
BLENDED/FLAVORED GREEN TEA**2009
worldtea
CHAMPION**Rishi Tea, Sencha Yuzu****1ST PLACE
RATING: 83**

MSRP: \$28.00/4 oz.
Origin: Japan, 2008
Primary Ingredient/Flavor:
Peppermint
Benjamin Harrison
phone: 414-747-4001
benjamin@rishi-tea.com
www.rishi-tea.com

**Dethlefsen & Balk,
Goji/Blueberry/Pomegranate****2ND PLACE**

RATING: 82
MSRP: \$7.20/4 oz.
Origin: China, 2008
Primary Ingredient/Flavor:
Green Tea
Sascha Karimpour
phone: 630-851-8549
info@dethlefsen-balk.us
www.dethlefsen-balk.us

**Sugimoto USA, Inc (SA Japanese
Green Tea), Genmai Cha****3RD PLACE**

RATING: 80
MSRP: \$14.77/4 oz.
Origin: Japan, 2008
Primary Ingredient/Flavor:
Brown Rice
Kyohei Sugimoto
phone: 206-774-0905
kyohei@sugimotousa.com
www.sugimotousa.com

Rishi Tea, Peppermint Ginger**RATING: 78**

MSRP: \$22.70/4 oz.
Origin: Japan, 2008
Primary Ingredient/Flavor:
Berries
Benjamin Harrison
phone: 414-747-4001
benjamin@rishi-tea.com
www.rishi-tea.com

**Qtrade Teas & Herbs,
Tropical Breeze****RATING: 77**

MSRP: \$10.00/4 oz.
Origin: Multiple, 2009
Primary Ingredient/Flavor:
Green Tea
Manjiv Jayakumar
phone: 949-766-0070
manjiv@qtradeteas.com
www.qtradeteas.com

Rishi Tea, Sencha Sakura**RATING: 77**

MSRP: \$28.00/4 oz.
Origin: Japan, 2008
Primary Ingredient/Flavor:
Yuzu Citrus
Benjamin Harrison
phone: 414-747-4001
benjamin@rishi-tea.com
www.rishi-tea.com

**TeaGschwendner USA,
Cranberry Mango****RATING: 76**

MSRP: \$10.08/4 oz.
Origin: Germany, 2008
Primary Ingredient/Flavor:
Cranberry Mango
Nicole Smith
phone: 847-229-4535
nsmith@teamerchants.com
www.teamerchants.com

**The East Indies Tea Company,
Berry Green****RATING: 76**

MSRP: \$7.50/4 oz.
Origin: China, 2008
Primary Ingredient/Flavor:
Strawberry
Mim Enck
phone: 717-228-2000
mstea@paonline.com
www.eastindiescoffeeandtea.com

**TeaGschwendner USA,
Strawberry Vanilla****RATING: 75**

MSRP: \$10.08/4 oz.
Origin: Germany, 2008
Primary Ingredient/Flavor:
Strawberry Vanilla
Nicole Smith
phone: 847-229-4535
nsmith@teamerchants.com
www.teamerchants.com

**Art of Tea,
Holiday Berry****RATING: 73**

MSRP: \$12.00/4 oz.
Origin: U.S.A., 2008
Steve Schwartz
phone: 310-765-7460
steve@artoftea.com
www.artoftea.com

**Amorepacific Corporation,
O'sulloc Jeju-Orchid Green Tea****RATING: 70**

MSRP: \$64.30/4 oz.
Origin: South Korea, 2008
Primary Ingredient/Flavor: Jeju
Hyun-min Park
phone: 8227095813
hyunminp@amorepacific.com
www.sulloc.co.kr

**La Crème Coffee & Tea,
Starlight Chocolate Mint Green Tea****RATING: 70**

MSRP: \$8.95/4 oz.
Origin: Taiwan, 2007
Primary Ingredient/Flavor:
Chocolate
Samantha Hamilton
phone: 877-493-2326
sah1in3@yahoo.com
www.lacremecoffeeandtea.com

**Empire International,
Tasseo Calming Lemongrass****RATING: 69**

MSRP: \$8.00/20 ct box
Origin: Indonesia, 2009
Primary Ingredient/Flavor:
Green Tea
Eri Mardanus
phone: 909-923-8588
empinterns@yahoo.com
www.empire-international.com

■ GENERAL CATEGORIES:
BLENDED/FLAVORED HERBAL TEA



**Rishi Tea, Organic
Cinnamon Plum**

**1ST PLACE
RATING: 82**

MSRP: \$8.00/4 oz.
Origin: U.S.A., 2008
Primary Ingredient/Flavor:
Plum
Benjamin Harrison
phone: 414-747-4001
benjamin@rishi-tea.com
www.rishi-tea.com

**TeaGschwendner USA,
Summer Romance**

**2ND PLACE
RATING: 81**

MSRP: \$8.95/4 oz.
Origin: Germany, 2008
Primary Ingredient/Flavor:
Strawberry
Nicole Smith
phone: 847-229-4535
nsmith@teamerchants.com
www.teamerchants.com

Rishi Tea, Organic Unity

**3RD PLACE
RATING: 80**

MSRP: \$8.00/4 oz.
Origin: U.S.A., 2008
Primary Ingredient/Flavor:
Citrus
Benjamin Harrison
phone: 414-747-4001
benjamin@rishi-tea.com
www.rishi-tea.com

**Rishi Tea, Organic/Fair Trade
Peppermint Rooibos**

RATING: 79

MSRP: \$8.00/4 oz.
Origin: U.S.A., 2008
Primary Ingredient/Flavor:
Peppermint
Benjamin Harrison
phone: 414-747-4001
benjamin@rishi-tea.com
www.rishi-tea.com

**Rishi Tea, Organic/Fair Trade
Chamomile Medley**

RATING: 78

MSRP: \$8.00/4 oz.
Origin: U.S.A., 2008
Primary Ingredient/Flavor:
Chamomile
Benjamin Harrison
phone: 414-747-4001
benjamin@rishi-tea.com
www.rishi-tea.com

**Rishi Tea, Organic
Tangerine Ginger**

RATING: 77

MSRP: \$9.00/4 oz.
Origin: U.S.A., 2008
Primary Ingredient/Flavor:
Ginger
Benjamin Harrison
phone: 414-747-4001
benjamin@rishi-tea.com
www.rishi-tea.com

**TeaGschwendner USA,
Cream Caramel Rooibush**

RATING: 76

MSRP: \$8.95/4 oz.
Origin: Germany, 2008
Primary Ingredient/Flavor:
Caramel
Nicole Smith
phone: 847-229-4535
nsmith@teamerchants.com
www.teamerchants.com

**The East Indies Tea Company,
Mojito**

RATING: 76

MSRP: \$6.90/4 oz.
Origin: South Africa, 2008
Primary Ingredient/Flavor:
Tropical/Mint
Mim Enck
phone: 717-228-2000
mstea@paonline.com
www.eastindiescoffeeandtea.com

**TeaGschwendner USA,
Blood Orange Fruit Tea**

RATING: 75

MSRP: \$8.95/4 oz.
Origin: Germany, 2008
Primary Ingredient/Flavor:
Blood Orange
Nicole Smith
phone: 847-229-4535
nsmith@teamerchants.com
www.teamerchants.com

**Art of Tea,
Chamomile Clementine**

RATING: 74

MSRP: \$12.00/4 oz.
Origin: U.S.A., 2008
Steve Schwartz
phone: 310-765-7460
steve@artoftea.com
www.artoftea.com

**SpecialTeas Inc.,
#723 Ruby Sunrise**

RATING: 73

MSRP: \$11.25/4 oz.
Origin: Germany, 2008
Primary Ingredient/Flavor:
Pineapple
Juergen Link
phone: 203-610-8600
link@specialteas.com
www.specialteasinc.com

**Dethlefsen & Balk,
Roasted Almond**

RATING: 72

MSRP: \$8.00/4 oz.
Origin: Germany, 2008
Primary Ingredient/Flavor: N/A
Sascha Karimpour
phone: 630-851-8549
info@dethlefsen-balk.us
www.dethlefsen-balk.us

**SpecialTeas Inc.,
#766 Harvest Fest**

RATING: 72

MSRP: \$6.95/4 oz.
Origin: Germany, 2008
Primary Ingredient/Flavor:
Walnut
Juergen Link
phone: 203-610-8600
link@specialteas.com
www.specialteasinc.com

**Qtrade Teas & Herbs,
Coco Star**

RATING: 70

MSRP: \$10.00/4 oz.
Origin: Multiple, 2009
Primary Ingredient/Flavor:
Rooibos
Manjiv Jayakumar
phone: 949-766-0070
manjiv@qtradeteas.com
www.qtradeteas.com

Mundi Tea, Tiramisu Amore

RATING: 69

MSRP: \$8.95/4 oz.
Origin: South Africa, 2008
Roger Bowman
Phone: 805-258-1555
roger@munditeas.com
www.munditeas.com

**Rishi Tea, Organic/Fair Trade
Blueberry Rooibos**

RATING: 69

MSRP: \$10.00/4 oz.
Origin: U.S.A., 2008
Primary Ingredient/Flavor:
Berries
Benjamin Harrison
phone: 414-747-4001
benjamin@rishi-tea.com
www.rishi-tea.com

**Teas Etc.,
Organic Relaxation**

RATING: 69

MSRP: \$18.95/4 oz.
Origin: Multiple, 2008
Primary Ingredient/Flavor:
Rose & Lemon
Beth Johnston
phone: 561-683-6838
beth@teasetc.com
www.teastec.com

**Art of Tea,
Caramelized Pear****RATING: 67**

MSRP: \$9.00/4 oz.
Origin: U.S.A., 2008
Primary Ingredient/Flavor: Rooibos
Steve Schwartz
phone: 310-765-7460
steve@artoftea.com
www.artoftea.com

**The East Indies Tea Company,
Swamp Water****RATING: 67**

MSRP: \$6.90/4 oz.
Origin: South Africa, 2008
Primary Ingredient/Flavor: Tropical
Mim Enck
phone: 717-228-2000
mstea@paonline.com
www.eastindiescoffeeandtea.com

**Perfectly Natural Herbs,
Talabonga Tea****RATING: 64**

MSRP: \$3.50/4 oz.
Origin: Philippines, 2009
Primary Ingredient/Flavor:
Lemon Grass
Tom O'Brien
phone: 224-639-3903
tmobrien2002@yahoo.com
www.perfectlynaturalherbs.com

■ GENERAL CATEGORIES:
BLENDED/FLAVORED OOLONG TEA

**Naivetea,
Lychee Green Oolong****1ST PLACE
RATING: 82**

MSRP: \$36.50/4 oz.
Origin: Taiwan, 2009
Primary Ingredient/Flavor: Lychee
Lawrence Lai
phone: 650-430-6566
naivetea@gmail.com

**Qtrade Teas & Herbs,
Plum Oolong****RATING: 75
2ND PLACE**

MSRP: \$20.00/4 oz.
Origin: Multiple, 2009
Primary Ingredient/Flavor: Plum
Manjiv Jayakumar
phone: 949-766-0070
manjiv@qtradeteas.com
www.qtradeteas.com

Rishi Tea, Plum Oolong**RATING: 74
3RD PLACE**

MSRP: \$14.00/4 oz.
Origin: U.S.A., 2008
Primary Ingredient/Flavor: Hibiscus
Benjamin Harrison
phone: 414-747-4001
benjamin@rishi-tea.com
www.rishi-tea.com

**Rishi Tea,
Citron Oolong****RATING: 73**

MSRP: \$16.00/4 oz.
Origin: U.S.A., 2008
Primary Ingredient/Flavor:
Citrus
Benjamin Harrison
phone: 414-747-4001
benjamin@rishi-tea.com
www.rishi-tea.com

**TeaGschwendner USA,
Bossa Nova****RATING: 71**

MSRP: \$10.08/4 oz.
Origin: Germany, 2008
Primary Ingredient/Flavor:
Hazelnut
Nicole Smith
phone: 847-229-4535
nsmith@teamerchants.com
www.teamerchants.com

**TeaGschwendner USA,
Tangerine Vanilla Yogurt****RATING: 71**

MSRP: \$10.08/4 oz.
Origin: Germany, 2008
Primary Ingredient/Flavor:
Tangerine
Nicole Smith
phone: 847-229-4535
nsmith@teamerchants.com
www.teamerchants.com

**Naivetea,
Mint Green Oolong****RATING: 69**

MSRP: \$36.50/4 oz.
Origin: Taiwan, 2009
Primary Ingredient/Flavor:
Mint
Lawrence Lai
phone: 650-430-6566
naivetea@gmail.com

■ GENERAL CATEGORIES:
BLENDED/FLAVORED WHITE TEA

**Rishi Tea, Organic
Silver Needle Jasmine****1ST PLACE
RATING: 80**

MSRP: \$22.00/4 oz.
Origin: China, 2008
Primary Ingredient/Flavor:
Jasmine
Benjamin Harrison
phone: 414-747-4001
benjamin@rishi-tea.com
www.rishi-tea.com

**Rishi Tea, Organic
Silver Needle Osthmanthus****2ND PLACE**

RATING: 78
MSRP: \$24.00/4 oz.
Origin: China, 2008
Primary Ingredient/Flavor:
Osthmanthus
Benjamin Harrison
phone: 414-747-4001
benjamin@rishi-tea.com
www.rishi-tea.com

**Qtrade Teas & Herbs,
Island Dreams****RATING: 76
3RD PLACE**

MSRP: \$15.00/4 oz.
Origin: Multiple, 2009
Primary Ingredient/Flavor: N/A
Manjiv Jayakumar
phone: 949-766-0070
manjiv@qtradeteas.com
www.qtradeteas.com

**Rishi Tea, Organic
Peach Blossom White Tea****RATING: 75**

MSRP: \$12.00/4 oz.
Origin: China, 2008
Primary Ingredient/Flavor:
Peach
Benjamin Harrison
phone: 414-747-4001
benjamin@rishi-tea.com
www.rishi-tea.com

**TeaGschwendner USA,
Strawberry White Tea****RATING: 69**

MSRP: \$14.62/4 oz.
Origin: Germany, 2008
Primary Ingredient/Flavor:
Strawberry
Nicole Smith
phone: 847-229-4535
nsmith@teamerchants.com
www.teamerchants.com

**Teas Etc., Qian Lan Cha—
1000 Cranes****RATING: 69**

MSRP: \$18.95/4 oz.
Origin: China, 2008
Primary Ingredient/Flavor:
Strawberry
Beth Johnston
phone: 561-683-6838
beth@teasetc.com
www.teasetc.com

**SpecialTeas Inc.,
#853 White Acai Luminescence****RATING: 68**

MSRP: \$10.95/4 oz.
Origin: China, 2008
Primary Ingredient/Flavor: Acai
Juergen Link
phone: 203-610-8600
link@specialteas.com
www.specialteasinc.com

■ GENERAL CATEGORIES: DARK OOLONG TEA



PeLi Teas,
Fenghuang Dancong (Super)
1ST PLACE
RATING: 89

MSRP: \$75.00/4 oz.
Origin: China, 2008
Mitchel Noble
phone: 323-651-2282
mitchel.noble@peliteas.com
www.peliteas.com

TeaGschwendner USA,
Formosa Superior Choice

2ND PLACE
RATING: 88

MSRP: \$45.21/4 oz.
Origin: Taiwan, 2008
Nicole Smith
phone: 847-229-4535
nsmith@teamerchants.com
www.teamerchants.com

PeLi Teas,
Fenghuang Dancong (Special)

3RD PLACE
RATING: 87

MSRP: \$75.00/4 oz.
Origin: China, 2008
Mitchel Noble
phone: 323-651-2282
mitchel.noble@peliteas.com
www.peliteas.com

Dethlefsen & Balk, Jun Chiyabari

RATING: 86

MSRP: \$19.90/4 oz.
Origin: Nepal, 2008
Sascha Karimpour
phone: 630-851-8549
info@dethlefsen-balk.us
www.dethlefsen-balk.us

Teas Etc., Oriental Beauty

RATING: 85

MSRP: \$26.95/4 oz.
Origin: China, 2008
Beth Johnston
phone: 561-683-6838
beth@teasetc.com
www.teasetc.com

Rishi Tea, Ba Xian Dancong

RATING: 84

MSRP: \$113.00/4 oz.
Origin: China, 2008
Benjamin Harrison
phone: 414-747-4001
benjamin@rishi-tea.com
www.rishi-tea.com

Rishi Tea, Huang Zhi Dancong

RATING: 83

MSRP: \$100.00/4 oz.
Origin: China, 2008
Benjamin Harrison
phone: 414-747-4001
benjamin@rishi-tea.com
www.rishi-tea.com

Rishi Tea,
Wuyi Da Hong Pao

RATING: 83

MSRP: \$93.00/4 oz.
Origin: China, 2008
Benjamin Harrison
phone: 414-747-4001
benjamin@rishi-tea.com
www.rishi-tea.com

Teas Etc.,
Shui Xian

RATING: 83

MSRP: \$22.95/4 oz.
Origin: China, 2008
Beth Johnston
phone: 561-683-6838
beth@teasetc.com
www.teasetc.com

Qtrade Teas & Herbs,
Wuyi Extra Special

RATING: 81

MSRP: \$40.00/4 oz.
Origin: China, 2009
Manjiv Jayakumar
phone: 949-766-0070
manjiv@qtradeteas.com
www.qtradeteas.com

Teas Etc.,
Qi Lan

RATING: 81

MSRP: \$22.95/4 oz.
Origin: China, 2008
Beth Johnston
phone: 561-683-6838
beth@teasetc.com
www.teasetc.com

The Whole Leaf,
Lu Gu Dong Ding

RATING: 80

MSRP: \$40.00/4 oz.
Origin: Taiwan, 2008
Jonah Arter
phone: 619-977-9838
jonaharter@thewholeleaf.com
www.thewholeleaf.com

Naivetea,
Imperial Beauty Oolong

RATING: 79

MSRP: \$89.00/4 oz.
Origin: Taiwan, 2009
Lawrence Lai
phone: 650-430-6566
naivetea@gmail.com

Barnes & Watson Fine Teas,
Aged Oolong (Golden Leaf Selections)

RATING: 78

MSRP: \$66.00/4 oz.
Origin: Taiwan, 1979
Ken Rudee
phone: 206-625-9435
ken@bwtea.com
www.barnesandwatson.com

Rishi Tea,
Iron Goddess of Mercy

RATING: 77

MSRP: \$16.00/4 oz.
Origin: Taiwan, 2009
Benjamin Harrison
phone: 414-747-4001
benjamin@rishi-tea.com
www.rishi-tea.com

The Whole Leaf,
Organic Dong Ding Oolong

RATING: 76

MSRP: \$28.00/4 oz.
Origin: Taiwan, 2008
Jonah Arter
phone: 619-977-9838
jonaharter@thewholeleaf.com
www.thewholeleaf.com

■ GENERAL CATEGORIES: DRY-FIRED GREEN TEA



Amorepacific Corporation,
Ilroh Yang of Sulloc
Premium Tea

1ST PLACE

RATING: 90

MSRP: \$200.00/4 oz.
Origin: South Korea, 2009
Hyun-min Park
phone: 8227095813
hyunminp@amorepacific.com
www.sulloc.co.kr



Qtrade Teas & Herbs,
Wuyang Chunyu

1ST PLACE

RATING: 90

MSRP: \$40.00/4 oz.
Origin: China, 2009
Manjiv Jayakumar
phone: 949-766-0070
manjiv@qtradeteas.com
www.qtradeteas.com

PeLi Teas,
Zhejiang Green Needle Tea

2ND PLACE

RATING: 87

MSRP: \$55.00/4 oz.
Origin: China, 2009
Mitchel Noble
phone: 323-651-2282
mitchel.noble@peliteas.com
www.peliteas.com

PeLi Teas,
Jingshan Tea (Special)

3RD PLACE

RATING: 86

MSRP: \$59.00/4 oz.
Origin: China, 2009
Mitchel Noble
phone: 323-651-2282
mitchel.noble@peliteas.com
www.peliteas.com

PeLi Teas,
Jiuhua Buddha Tea (Special)**RATING: 86**

MSRP: \$28.00/4 oz.
Origin: China, 2009
Mitchel Noble
phone: 323-651-2282
mitchel.noble@peliteas.com
www.peliteas.com

PeLi Teas,
Zhejiang Green Tea (Special)**RATING: 86**

MSRP: \$21.00/4 oz.
Origin: China, 2009
Mitchel Noble
phone: 323-651-2282
mitchel.noble@peliteas.com
www.peliteas.com

Rishi Tea, Organic/Fair Trade
Green Needles**RATING: 86**

MSRP: \$35.00/4 oz.
Origin: China, 2009
Benjamin Harrison
phone: 414-747-4001
benjamin@rishi-tea.com
www.rishi-tea.com

PeLi Teas, Dong Ting
Bi Lo Chun (Special)**RATING: 83**

MSRP: \$39.00/4 oz.
Origin: China, 2009
Mitchel Noble
phone: 323-651-2282
mitchel.noble@peliteas.com
www.peliteas.com

PeLi Teas, Dong Ting
Bi Lo Chun (Super)**RATING: 83**

MSRP: \$59.00/4 oz.
Origin: China, 2009
Mitchel Noble
phone: 323-651-2282
mitchel.noble@peliteas.com
www.peliteas.com

PeLi Teas,
Yongxi Jade Fire (Special)**RATING: 82**

MSRP: \$23.00/4 oz.
Origin: China, 2009
Mitchel Noble
phone: 323-651-2282
mitchel.noble@peliteas.com
www.peliteas.com

Rishi Tea, Organic/Fair Trade
Spring Needles**RATING: 82**

MSRP: \$35.00/4 oz.
Origin: China, 2009
Benjamin Harrison
phone: 414-747-4001
benjamin@rishi-tea.com
www.rishi-tea.com

PeLi Teas, Huang Shan
Mao Feng (Special)**RATING: 81**

MSRP: \$29.00/4 oz.
Origin: China, 2009
Mitchel Noble
phone: 323-651-2282
mitchel.noble@peliteas.com
www.peliteas.com

PeLi Teas, Dong Ting
Bi Lo Chun (Fine)**RATING: 80**

MSRP: \$59.00/4 oz.
Origin: China, 2009
Mitchel Noble
phone: 323-651-2282
mitchel.noble@peliteas.com
www.peliteas.com

TeaGschwendner USA,
Formosa Pi Lo Chun**RATING: 80**

MSRP: \$22.55/4 oz.
Origin: Taiwan, 2008
Nicole Smith
phone: 847-229-4535
nsmith@teamerchants.com
www.teamerchants.com

PeLi Teas,
Liu An Gua Pian (Special)**RATING: 79**

MSRP: \$74.00/4 oz.
Origin: China, 2009
Mitchel Noble
phone: 323-651-2282
mitchel.noble@peliteas.com
www.peliteas.com

Rishi Tea, Organic Fair Trade
Ancient Emerald Lily**RATING: 79**

MSRP: \$18.00/4 oz.
Origin: China, 2009
Benjamin Harrison
phone: 414-747-4001
benjamin@rishi-tea.com
www.rishi-tea.com

Vietnam Tea Association,
Shan tea—Ha Giang**RATING: 79**

MSRP: \$35.00/4 oz.
Origin: Vietnam, 2009
Hong Nguyen
phone: 84983313668
vitas@fpt.vn; teatrade@fpt.vn
www.vitas.org.vn

TeaGschwendner USA,
China Mao Feng**RATING: 77**

MSRP: \$13.48/4 oz.
Origin: China, 2008
Nicole Smith
phone: 847-229-4535
nsmith@teamerchants.com
www.teamerchants.com

Empire International,
Tasseo Pure Green**RATING: 68**

MSRP: \$8.00/20 ct box
Origin: Indonesia, 2009
Eri Mardanus
phone: 909-923-8588
empinterns@yahoo.com
www.empire-international.com

■ GENERAL CATEGORIES: GREEN OOLONG TEA

**Barnes & Watson Fine Teas,**
Jade Oolong (Golden Leaf
Selections)**1ST PLACE****RATING: 91**

MSRP: \$84.00, 4 oz.
Origin: Taiwan, 2008
Ken Rudee
phone: 206-625-9435
ken@bwtea.com
www.barnesandwatson.com

PeLi Teas, Ti Quan Yin (Super)**2ND PLACE****RATING: 89**

MSRP: \$65.00/4 oz.
Origin: China, 2008
Mitchel Noble
phone: 323-651-2282
mitchel.noble@peliteas.com
www.peliteas.com

Rishi Tea, Jade Oolong**3RD PLACE****RATING: 88**

MSRP: \$16.00/4 oz.
Origin: Taiwan, 2009
Benjamin Harrison
phone: 414-747-4001
benjamin@rishi-tea.com
www.rishi-tea.com

Naivetea, Delicate Bouquet**RATING: 87**

MSRP: \$82.00/4 oz.
Origin: Taiwan, 2009
Lawrence Lai
phone: 650-430-6566
naivetea@gmail.com

PeLi Teas, Huang Jin Gui (Special)**RATING: 86**

MSRP: \$27.00/4 oz.
Origin: China, 2008
Mitchel Noble
phone: 323-651-2282
mitchel.noble@peliteas.com
www.peliteas.com

Qtrade Teas & Herbs,
Tie Kuan Yin Superior**RATING: 85**

MSRP: \$40.00/4 oz.
Origin: China, 2009
Manjiv Jayakumar
phone: 949-766-0070
manjiv@qtradeteas.com
www.qtradeteas.com

**TeaGschwendner USA,
Sumatra Oolong Barisan****RATING: 85**

MSRP: \$11.22/4 oz.
Origin: Sumatra, 2008
Nicole Smith
phone: 847-229-4535
nsmith@teamerchants.com
www.teamerchants.com

**Two Hills Tea Ltd.,
Organic Iron Goddess of Mercy****RATING: 85**

MSRP: \$38.00/4 oz.
Origin: China, 2008
Haizhen Vission
phone: 250-352-6862
haizhen@twohillstea.com
www.twohillstea.com

**Chamong,
Phoobsering Oolong****RATING: 82**

MSRP: \$68.00/4 oz.
Origin: India, 2009
Mayank Bansal
phone: 215-550-4710
mb@chamongtea.com
www.chamongtea.com

■ GENERAL CATEGORIES: HERBAL

2009
worldtea
CHAMPION**Puripan Inc.,
Tartary Buckwheat****1ST PLACE
RATING: 86**

MSRP: \$9.99/4 oz.
Origin: South Korea, 2009
Ellen Kim
phone: 888-259-3915
ekim@puripan.com
www.puripan.com

**Rishi Tea,
Organic/Wild Schisandra Berry****2ND PLACE
RATING: 85**

MSRP: \$20.00/4 oz.
Origin: China, 2008
Benjamin Harrison
phone: 414-747-4001
benjamin@rishi-tea.com
www.rishi-tea.com

**Puripan Inc.,
Mulberry Leaf****3RD PLACE
RATING: 80**

MSRP: \$7.99/4 oz.
Origin: South Korea, 2009
Ellen Kim
phone: 888-259-3915
ekim@puripan.com
www.puripan.com

**TeaGschwendner USA,
Hibiscus Blossom****RATING: 79**

MSRP: \$13.49/4 oz.
Origin: South Africa, 2008
Nicole Smith
phone: 847-229-4535
nsmith@teamerchants.com
www.teamerchants.com

■ GENERAL CATEGORIES: PUER

2009
worldtea
CHAMPION**PeLi Teas,
Puer Tea (Special)****1ST PLACE
RATING: 86**

MSRP: \$30.00/4 oz.
Origin: China, 1996
Mitchel Noble
phone: 323-651-2282
mitchel.noble@peliteas.com
www.peliteas.com

**Rishi Tea, Organic/Fair Trade
Puer Classic****2ND PLACE
RATING: 85**

MSRP: \$12.00/4 oz.
Origin: China, 2008
Benjamin Harrison
phone: 414-747-4001
benjamin@rishi-tea.com
www.rishi-tea.com

**Rishi Tea, Organic/Fair Trade
Ancient Puer Palace****3RD PLACE
RATING: 82**

MSRP: \$50.00/4 oz.
Origin: China, 2005
Benjamin Harrison
phone: 414-747-4001
benjamin@rishi-tea.com
www.rishi-tea.com

**TeaGschwendner USA,
Puerh Tuocha****RATING: 79**

MSRP: \$14.62/4 oz.
Origin: China, 2008
Nicole Smith
phone: 847-229-4535
nsmith@teamerchants.com
www.teamerchants.com

**Rishi Tea, Organic/Fair Trade
Ancient Puer Tuo Cha****RATING: 78**

MSRP: \$12.50/4 oz.
Origin: China, 2008
Benjamin Harrison
phone: 414-747-4001
benjamin@rishi-tea.com
www.rishi-tea.com

■ GENERAL CATEGORIES: STEAMED GREEN TEA

2009
worldtea
CHAMPION**Qtrade Teas & Herbs,
Yame Hon-Gyokuro****1ST PLACE
RATING: 87**

MSRP: \$50.00/4 oz.
Origin: Japan, 2009
Manjiv Jayakumar
phone: 949-766-0070
manjiv@qtradeteas.com
www.qtradeteas.com

Rishi Tea, Gyokuro**2ND PLACE
RATING: 86**

MSRP: \$180.00/4 oz.
Origin: Japan, 2008
Benjamin Harrison
phone: 414-747-4001
benjamin@rishi-tea.com
www.rishi-tea.com

**Rishi Tea,
Organic Kukicha****3RD PLACE
RATING: 85**

MSRP: \$22.70/4 oz.
Origin: Japan, 2008
Benjamin Harrison
phone: 414-747-4001
benjamin@rishi-tea.com
www.rishi-tea.com

**Amorepacific Corporation,
Sejac of Sulloc Premium Tea****RATING: 84**

MSRP: \$55.00/4 oz.
Origin: South Korea, 2008
Hyun-min Park
phone: 8227095813
hyunminp@amorepacific.com
www.sulloc.co.kr

Rishi Tea, Karigane**RATING: 84**

MSRP: \$63.00/4 oz.
Origin: Japan, 2008
Benjamin Harrison
phone: 414-747-4001
benjamin@rishi-tea.com
www.rishi-tea.com

**Tazo Tea,
China Green Tips****RATING: 82**

MSRP: \$11.34/4 oz.
Origin: China, 2008
www.cooking.com

**TeaGschwendner USA,
Japan Gyokuro****RATING: 81**

MSRP: \$50.88/4 oz.
Origin: Japan, 2008
Nicole Smith
phone: 847-229-4535
nsmith@teamerchants.com
www.teamerchants.com

**Puripan Inc.,
Hadong****RATING: 79**

MSRP: \$32.99/4 oz.
Origin: South Korea, 2008
Ellen Kim
phone: 888-259-3915
ekim@puripan.com
www.puripan.com

**Amorepacific Corporation,
Sulloc Halla****RATING: 77**

MSRP: \$6.70/4 oz.
Origin: South Korea, 2008
Hyun-min Park
phone: 8227095813
hyunminp@amorepacific.com
www.sulloc.co.kr

**Sugimoto USA, Inc
(SA Japanese Green Tea), Hoji cha****RATING: 77**

MSRP: \$25.97/4 oz.
Origin: Japan, 2008
Kyohei Sugimoto
phone: 206-774-0905
kyohei@sugimotousa.com
www.sugimotousa.com

■ GENERAL CATEGORIES:
TREASURE/DISPLAY/FLOWERING TEA

■ GENERAL CATEGORIES: WHITE TEA

2009
worldtea
CHAMPION

**Rishi Tea,
Organic Silver Needle****1ST PLACE
RATING: 88**

MSRP: \$24.00/4 oz.
Origin: China, 2008
Benjamin Harrison
phone: 414-747-4001
benjamin@rishi-tea.com
www.rishi-tea.com

Two Hills Tea Ltd., Organic Silver Needle**2ND PLACE
RATING: 87**

MSRP: \$40.00/4 oz.
Origin: China, 2008
Haizhen Vission
phone: 250-352-6862
haizhen@twohillstea.com
www.twohillstea.com

**Fujian Guang Fu Tea Co., Ltd,
Silver Needle****3RD PLACE
RATING: 86**

MSRP: \$23.00/4 oz.
Origin: China, 2009
Zheng Qi phone: 862087501508
joseph@grandfoktea.com
www.granfoktea.com

**Qtrade Teas & Herbs,
Morning Dew Silver Needle****RATING: 85**

MSRP: \$25.00/4 oz.
Origin: China, 2009
Manjiv Jayakumar
phone: 949-766-0070
manjiv@qtradeteas.com
www.qtradeteas.com

Rishi Tea, Organic White Peony**RATING: 85**

MSRP: \$8.00/4 oz.
Origin: China, 2009
Benjamin Harrison
phone: 414-747-4001
benjamin@rishi-tea.com
www.rishi-tea.com

**Rishi Tea, Organic/Fair Trade
Ancient White Buds****RATING: 84**

MSRP: \$42.50/4 oz.
Origin: China, 2009
Benjamin Harrison
phone: 414-747-4001
benjamin@rishi-tea.com
www.rishi-tea.com

Teas Etc., Bai Hao Silver Needle Organic**RATING: 84**

MSRP: \$29.95/4 oz.
Origin: China, 2008
Beth Johnston
phone: 561-683-6838
beth@teasetc.com
www.teasetc.com

**The Whole Leaf,
Organic Silver Needle****RATING: 83**

MSRP: \$40.00/4 oz.
Origin: China, 2008
Jonah Arter
phone: 619-977-9838
jonaharter@thewholeleaf.com
www.thewholeleaf.com

**PeLi Teas,
Silver Needle White Tea****RATING: 82**

MSRP: \$30.00/4 oz.
Origin: China, 2009
Mitchel Noble
phone: 323-651-2282
mitchel.noble@peliteas.com
www.peliteas.com

**Rishi Tea,
Organic Silver Needle****RATING: 81**

MSRP: \$24.00/4 oz.
Origin: China, 2009
Benjamin Harrison
phone: 414-747-4001
benjamin@rishi-tea.com
www.rishi-tea.com

**PeLi Teas, White Peony
(Super King)****RATING: 80**

MSRP: \$25.00/4 oz.
Origin: China, 2009
Mitchel Noble
phone: 323-651-2282
mitchel.noble@peliteas.com
www.peliteas.com

**Teas Etc.,
Bai Mu Dan Organic****RATING: 80**

MSRP: \$22.95/4 oz.
Origin: China, 2008
Beth Johnston
phone: 561-683-6838
beth@teasetc.com
www.teasetc.com

**Rishi Tea, Organic/Fair Trade
Ancient Moonlight White****RATING: 79**

MSRP: \$29.00/4 oz.
Origin: China, 2009
Benjamin Harrison
phone: 414-747-4001
benjamin@rishi-tea.com
www.rishi-tea.com

PeLi Teas, Top White Tea**RATING: 77**

MSRP: \$66.00/4 oz.
Origin: China, 2009
Mitchel Noble
phone: 323-651-2282
mitchel.noble@peliteas.com
www.peliteas.com

2009
worldtea
CHAMPION

**Tea Beyond,
L.T. Grade A Collection****1ST PLACE
RATING: 82**

MSRP: \$21.99 4/blooms
Origin: China, 2008
Jane London
phone: 215-219-0425
hongyan.london@gmail.com
www.teabeyond.com

**Fujian Guang Fu Tea Co., Ltd,
Royal Lily****2ND PLACE
RATING: 73**

MSRP: \$18.00/4 oz.
Origin: China, 2009
Zheng Qi
phone: 862087501508
joseph@grandfoktea.com
www.granfoktea.com

**TeaGschwendner USA,
China Yin Zhen Flowering****3RD PLACE
RATING: 70**

MSRP: \$55.44/4 oz.
Origin: China, 2008
Nicole Smith
phone: 847-229-4535
nsmith@teamerchants.com
www.teamerchants.com

ICED TEACLASS



■ FOODSERVICE: FLAVORED BLACK

2009 worldtea CHAMPION

Rishi Tea, Organic/Fair Trade Summer Lemon

**1ST PLACE
RATING: 87**

MSRP: \$1.75/pack
Gallons/pack: 1
Benjamin Harrison
phone: 414-747-4001
benjamin@rishi-tea.com
www.rishi-tea.com

Art of Tea, Passion Fruit Jasmine

**2ND PLACE
RATING: 86**

MSRP: \$1.75/pack
Gallons/pack: 3
Steve Schwartz
phone: 310-765-7460
steve@artoftea.com
www.artoftea.com

Shangri La Tea Company, Porganic Maple Caramel Iced Tea

**3RD PLACE
RATING: 85**

MSRP: Varies
Gallons/pack: 3
Richard Guzauskas
phone: 562-942-9828
tealifestyle@earthlink.net
www.shangrilatea.com

Sungarden Specialty Tea, Organic Ancient Tropics Black Iced Tea

RATING: 84

MSRP: \$3.60/pack
Gallons/pack: 2.75
Victor Jara
phone: 626-202-0326
victor.jara@sungardentea.com
www.sungardentea.com

La Crème Coffee & Tea, La Crème Apricot Mango Iced Tea

RATING: 83

MSRP: \$1.60/pack
Gallons/pack: 1.5
Samantha Hamilton
phone: 877-493-2326
sah1in3@yahoo.com
www.lacremecoffeeandtea.com

International Tea Importers, Tropical Paradise

RATING: 82

MSRP: \$1.60/per pack
Gallons/pack: 3
Devan Shah
phone: 562-801-9600
tealand@msn.com
www.teavendor.com

Rishi Tea, Organic/Fair Trade Classic Citrus

RATING: 81

MSRP: \$1.75/pack
Gallons/pack: 1
Benjamin Harrison
phone: 414-747-4001
benjamin@rishi-tea.com
www.rishi-tea.com

■ FOODSERVICE: FLAVORED GREEN

2009 worldtea CHAMPION

Shangri La Tea Company, Organic Ambrosia Green Iced Tea

1ST PLACE

RATING: 89

MSRP: Varies
Gallons/pack: 3
Richard Guzauskas
phone: 562-942-9828
tealifestyle@earthlink.net
www.waltersbay.com

2009 worldtea CHAMPION

Sungarden Specialty Tea, Organic Serene Green Citrus Iced Tea

1ST PLACE

RATING: 89

MSRP: \$3.60/pack
Gallons/pack: 2.75
Victor Jara
phone: 626-202-0326
victor.jara@sungardentea.com
www.sungardentea.com

Rishi Tea, Organic/Fair Trade Citron Green

2ND PLACE

RATING: 85

MSRP: \$1.75/pack
Gallons/pack: 1
Benjamin Harrison
phone: 414-747-4001
benjamin@rishi-tea.com
www.rishi-tea.com

Walters Bay Bogawantalawa Estates, Walters Bay Mint Green Iced Tea

3RD PLACE

RATING: 82

MSRP: \$0.78/pack
Gallons/pack: 3
Christian Weber
phone: 512-306-0935
christianw@waltersbay.com
www.waltersbay.com

■ FOODSERVICE: FLAVORED HERBAL

2009 worldtea CHAMPION

Rishi Tea, Organic/Fair Trade Tropical Crimson

**1ST PLACE
RATING: 86**

MSRP: \$1.75/pack
Gallons/pack: 1
Benjamin Harrison
phone: 414-747-4001
benjamin@rishi-tea.com
www.rishi-tea.com

Sungarden Specialty Tea, Organic Berry White Iced Tea

2ND PLACE

RATING: 85

MSRP: \$3.60/pack;
Gallons/pack: 2.75
Victor Jara
phone: 626-202-0326
victor.jara@sungardentea.com
www.sungardentea.com

Rishi Tea, Organic/Fair Trade Blueberry Red

3RD PLACE

RATING: 84

MSRP: \$1.75/pack
Gallons/pack: 1
Benjamin Harrison
phone: 414-747-4001
benjamin@rishi-tea.com
www.rishi-tea.com

Barnes & Watson Fine Teas, SunSplash (Natural)

RATING: 82

MSRP: \$1.00/pack
Gallons/pack: 1
Ken Rudee
phone: 206-625-9435
ken@bwtea.com
www.barnesandwatson.com

Rishi Tea, Organic/Fair Trade Mint Rooibos

RATING: 81

MSRP: \$1.75/pack
Gallons/pack: 1
Benjamin Harrison
phone: 414-747-4001
benjamin@rishi-tea.com
www.rishi-tea.com

**Shangri La Tea Company,
Organic Rooibos Spice****RATING: 82**

MSRP: Varies
Gallons/pack: 1.5
Richard Guzauskas
phone: 562-942-9828
tealifestyle@earthlink.net
www.shangrilatea.com

**Sungarden Specialty Tea,
Organic Red Berry 2 Rooibos Iced Tea****RATING: 80**

MSRP: \$3.60/pack;
Gallons/pack: 2.75
Victor Jara
phone: 626-202-0326
victor.jara@sungardentea.com
www.sungardentea.com

■ FOODSERVICE: UNFLAVORED BLACK

2009
worldtea
CHAMPION**Shangri La Tea Company,
Natural Organic
Black Iced Tea****1ST PLACE****RATING: 86**

MSRP: Varies
Gallons/pack: 3
Richard Guzauskas
phone: 562-942-9828
tealifestyle@earthlink.net
www.shangrilatea.com

**International Tea Importers,
100% Nilgiri Ice Tea Blend****2ND PLACE****RATING: 85**

MSRP: \$1.30/pack
Gallons/pack: 3
Devan Shah
phone: 562-801-9600
tealand@msn.com
www.teavendor.com

**Walters Bay Bogawantalawa Estates,
Walters Bay Black Iced Tea****3RD PLACE****RATING: 83**

MSRP: \$0.24/pack
Gallons/pack: 3
Christian Weber
phone: 512-306-0935
christianw@waltersbay.com
www.waltersbay.com

**Art of Tea,
Classic Black****RATING: 82**

MSRP: \$1.75/pack
Gallons/pack: 3
Steve Schwartz
phone: 310-765-7460
steve@artoftea.com
www.artoftea.com

**Barnes & Watson Fine Teas,
Classic Blend****RATING: 81**

MSRP: \$2.75/pack
Gallons/pack: 3
Ken Rudee
phone: 206-625-9435
ken@bwtea.com
www.barnesandwatson.com

**Rishi Tea, Organic/Fair Trade
Pure Iced Tea****RATING: 81**

MSRP: \$1.75/pack
Gallons/pack: 1
Benjamin Harrison
phone: 414-747-4001
benjamin@rishi-tea.com

■ FOODSERVICE: UNFLAVORED GREEN

2009
worldtea
CHAMPION**Shangri La Tea Company,
Natural Organic
Green Iced Tea****1ST PLACE****RATING: 85**

MSRP: Varies
Gallons/pack: 3
Richard Guzauskas
phone: 562-942-9828
tealifestyle@earthlink.net
www.shangrilatea.com

**Art of Tea,
Liquid Jade****2ND PLACE****RATING: 83**

MSRP: \$1.75/pack
Gallons per pack: 3
Steve Schwartz
phone: 310-765-7460
steve@artoftea.com
www.artoftea.com

**Walters Bay Bogawantalawa Estates,
Walters Bay Green Iced Tea****3RD PLACE****RATING: 80**

MSRP: \$0.47/pack;
Gallons/pack: 3
Christian Weber
phone: 512-306-0935
christianw@waltersbay.com
www.waltersbay.com

■ FOODSERVICE: BEST VALUE

2009
worldtea
CHAMPION**Walters Bay
Bogawantalawa Estates,
Walters Bay Black Iced Tea****RATING: 83**

MSRP: \$0.24/pack
Gallons/pack: 3
Christian Weber
phone: 512-306-0935
christianw@waltersbay.com
www.waltersbay.com

■ FREESTYLE: HERBAL

2009
worldtea
CHAMPION**Puripan Inc.,
TEA IN A JAR—ALOE VERA****1ST PLACE
RATING: 86**

Ellen Kim
phone: 888-259-3915
ekim@puripan.com
www.puripan.com

**Qtrade Teas & Herbs,
Rosa de Jamaica****2ND PLACE
RATING: 85**

Manjiv Jayakumar
phone: 949-766-0070
manjiv@qtradeteas.com
www.qtradeteas.com

**Puripan Inc.,
TEA IN A JAR—GINGER****3RD PLACE
RATING: 83**

Ellen Kim
phone: 888-259-3915
ekim@puripan.com
www.puripan.com

**Dethlefsen & Balk,
Fruit Tea Blend "Watermelon"****RATING: 81**

Sascha Karimpour
phone: 630-851-8549
info@dethlefsen-balk.us
www.dethlefsen-balk.us

**AIYA America Inc.,
Rooibos Pre-Mix****RATING: 80**

Jon Baumgardner
phone: 310-212-1395
jbaumgardner@aiya-america.com
www.aiya-america.com

■ FREESTYLE: TEA

2009
worldtea
CHAMPION**Barnes & Watson Fine Teas,
Iron Buddha and the Flower****1ST PLACE
RATING: 85**

Ken Rudee
phone: 206-625-9435
ken@bwtea.com
www.barnesandwatson.com

**AIYA America Inc.,
Black Tea Pre-Mix****2ND PLACE
RATING: 81**

Jon Baumgardner
phone: 310-212-1395
jbaumgardner@aiya-america.com
www.aiya-america.com

■ FREESTYLE: BEST PRESENTATION

2009
worldtea
CHAMPION

**Puripan Inc.,
TEA IN A JAR—ALOE VERA**

RATING: 86

Ellen Kim

phone: 888-259-3915
ekim@puripan.com
www.puripan.com

■ READY-TO-DRINK: FLAVORED BLACK

**MarketSpice,
MarketSpice Signature Blend**

**1ST PLACE
RATING: 86**

MSRP: \$3.50-\$3.95/bottle
Judy Dawson
phone: 206-719-8753
judymarsp@q.com

**MarketSpice,
Pomegranate Splash**

**2ND PLACE
RATING: 85**

MSRP: \$3.50-\$3.95/bottle
Judy Dawson
phone: 206-719-8753
judymarsp@q.com

**ITO EN,
TEAS' TEA Naturally Sweet—
Citrus Black**

**3RD PLACE
RATING: 77**

MSRP: 1.49/bottle
Yoshie Yano-Pennings
phone: 718-250-4024
yyano@itoen.com
www.itoen.com

■ READY-TO-DRINK: FLAVORED GREEN

2009
worldtea
CHAMPION

ITO EN, Jasmine Green Tea

**1ST PLACE
RATING: 83**

MSRP: \$1.99/bottle

Yoshie Yano-Pennings
phone: 718-250-4024
yyano@itoen.com
www.itoen.com

**Wegmans, Just Tea—Green Jasmine,
manufactured by ITO EN**

**2ND PLACE
RATING: 82**

MSRP: \$1.25/bottle
Yoshie Yano-Pennings
phone: 718-250-4024
yyano@itoen.com
www.wegmans.com

■ READY-TO-DRINK: SWEETENED GREEN

2009
worldtea
CHAMPION

**Tazo Tea,
Tazo Organic Iced Green**

**1ST PLACE
RATING: 84**

MSRP: \$1.69/bottle
www.tazo.com

**KimBees Gourmet Sweet Tea,
KimBees Lemon-Raspberry Gourmet**

**2ND PLACE
RATING: 80**

MSRP: \$2.50/bottle
Kimberly Brown
phone: 1-877-KIMBEEES
sales@kimbees.com
www.kimbees.com

**KimBees Gourmet Sweet Tea,
KimBees Almond Gourmet Sweet**

**3RD PLACE
RATING: 79**

MSRP: \$2.50/bottle
Kimberly Brown
phone: 1-877-KIMBEEES
sales@kimbees.com
www.kimbees.com

**Empire International,
The Botol Sosro Jasmine Tea**

RATING: 75

MSRP: \$7.00/case
Eri Mardanus
phone: 909-923-8588
empintems@yahoo.com
www.empire-international.com

■ READY-TO-DRINK: UNFLAVORED BLACK

2009
worldtea
CHAMPION

**Adagio Teas,
Anteadote Organic Black Tea**

**1ST PLACE
RATING: 87**

MSRP: \$1.79/bottle
Michael Cramer
phone: 973-253-7400
michael@adagio.com
www.adagioxl.com

**Wegmans, Just Tea—Black,
manufactured by ITO EN**

**2ND PLACE
RATING: 86**

MSRP: \$1.25/bottle
Yoshie Yano-Pennings
phone: 718-250-4024
yyano@itoen.com
www.wegmans.com

■ READY-TO-DRINK: UNFLAVORED GREEN

2009
worldtea
CHAMPION

ITO EN, Oi Ocha Dark

**1ST PLACE
RATING: 79**

MSRP: \$1.99/bottle
Yoshie Yano-Pennings
phone: 718-250-4024
yyano@itoen.com
www.itoen.com

**Wegmans, Just Tea—Green,
manufactured by ITO EN**

**2ND PLACE
RATING: 78**

MSRP: \$1.25/bottle
Yoshie Yano-Pennings
phone: 718-250-4024
yyano@itoen.com
www.wegmans.com

**La Crème Coffee & Tea, La Crème
100% Organic Unsweetened Green Tea**

**3RD PLACE
RATING: 77**

MSRP: \$1.95/bottle
Samantha Hamilton
phone: 877-493-2326
sah1in3@yahoo.com
www.lacremecoffeeandtea.com

■ READY-TO-DRINK: UNFLAVORED OOLONG

2009
worldtea
CHAMPION

ITO EN, Oolong Shot

**1ST PLACE
RATING: 85**

MSRP: \$1.79/bottle

Yoshie Yano-Pennings
phone: 718-250-4024
yyano@itoen.com
www.itoen.com

**Wegmans, Just Tea—Oolong,
manufactured by ITO EN**

**2ND PLACE
RATING: 79**

MSRP: \$1.25/bottle
Yoshie Yano-Pennings
phone: 718-250-4024
yyano@itoen.com
www.wegmans.com

**Adagio Teas,
Anteadote Organic Oolong Tea**

**3RD PLACE
RATING: 73**

MSRP: \$1.79/bottle
Michael Cramer
phone: 973-253-7401
michael@adagio.com
www.adagioxl.com

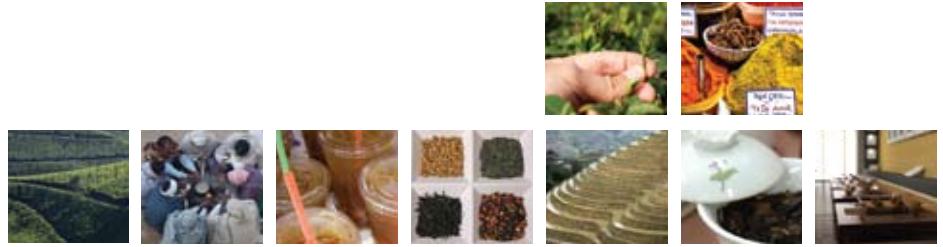
■ READY-TO-DRINK: BEST PACKAGING

2009
worldtea
CHAMPION

**KimBees Gourmet Sweet Tea,
KimBees Lemon-Raspberry
Gourmet**

RATING: 80

MSRP: \$2.50 per btl
Kimberly Brown
phone: 1-877-KimBees
sales@kimbees.com
www.kimbees.com



worldtea news



Industry coverage you can trust
worldteanews.com