

Laimonas Griškevičius, Mindaugas Jurgutis, Indrė Vengalytė

# **CHRONIC MYELOID LEUKEMIA IN LITHUANIA**

## **RETROSPECTIVE ANALYSIS 2004-2007**

**Onkologijos ir hematologijos studijų grupė LT**  
Vilnius, 2009

**Editor in chief****Laimonas Griškevičius, MD, PhD****Editorial board****Mindaugas Jurgutis, MD****Indrė Vengalytė, MD****Project editor****Rokas Stulpinas****Publisher**

PE "Onkologijos ir hematologijos  
studijų grupė LT"  
Santariškių str. 2, A832  
LT-08661 Vilnius  
Lithuania

All rights reserved. No part of this publication may be reproduced, stored in a retrieval system, or transmitted, in any form or by any mean, including, but not limited to, electronic, mechanical, photocopying, recording and/or otherwise, without the prior written permission of the publisher unless the laws of Republic of Lithuania indicate otherwise.

Neither the publisher, nor the editors can be held responsible for errors or for any consequences arising from this publication.

Questions should be addressed to Laimonas Griškevičius.

E-mail: laimonas.griskevicius@santa.lt

© 2009 Onkologijos ir hematologijos studijų grupė LT

# CONTENTS

## **PART I: Descriptive data**

Incident cases and crude incidence . . . . .	6
Incident cases by healthcare settings . . . . .	6
Treatment of CML at any given time . . . . .	6
Characteristics of CML patients . . . . .	7
Characteristics of chronic phase CML patients in age group of 0-60 years . . . . .	8

## **PART II: Survival analysis**

Median survival time of all CML patients . . . . .	11
Median survival time of all chronic phase CML patients . . . . .	11
Median survival time of all chronic phase CML patients in age group of 0-60 years . . . . .	11
Kaplan-Meyer survival analysis . . . . .	12

## **PART III: Treatment results according to ELN**

Treatment results of patients followed according to ELN guidelines . . . . .	14
--	----

**PART I**  
**DESCRIPTIVE DATA**

## Incident cases and crude incidence of CML in Lithuania

Year	Cases	Percentage	Crude incidence *
2004	39	24,2%	1,13 / 100 000
2005	37	23,0%	1,08 / 100 000
2006	43	26,7%	1,26 / 100 000
2007	42	26,1%	1,24 / 100 000
Total	161	-	-

► \* Population data provided by the Department of Statistics to the Government of the Republic of Lithuania.

## Incident cases of CML diagnosed in healthcare settings

Hospital *	Number of cases	Percentage
VULSK	61	37,9%
KMUK	50	31,1%
KJL	15	9,3%
RPL	7	4,3%
RŠL	4	2,5%
VPC	4	2,5%
VUVL	3	1,9%
Other	17	10,6%

► \* VULSK - Vilnius University Hospital Santariškių Clinics; VUVL - Vilnius University Children's Hospital; KMUK - Kaunas Medical University Clinics; KJL - Klaipėda "Jūrininkų" Hospital; RŠL - Šiauliai Hospital; RPL - Panevėžys Hospital; VPC - National Center of Pathology.

## Treatment of CML at any given time

Hospital *	Number of cases	Percentage
HU	112	69,6%
IF-alpha	72	44,7%
Imatinib	43	26,7%
Allogeneic SCT	6	3,7%
AML treatment	9	5,6%
AraC	6	3,7%
No specific treatment	8	5,0%

► \* HU - Hydroxycarbamidum; IF - Interferon; SCT - Stem cell transplantation; AML - Acute myeloid leukemia; AraC - Cytarabine

## Characteristics of CML patients

Characteristic	Number of cases	Percentage
<b>Age, years</b>		
<10	1	0,6%
10-19	3	1,9%
20-29	5	3,1%
30-39	15	9,3%
40-49	27	16,8%
50-59	27	16,8%
60-69	24	14,9%
70-79	40	24,8%
80-89	17	10,6%
>90	2	1,2%
Median age - 60 (range 9-90)		
<b>Gender</b>		
Males	81	50,3%
Females	80	49,7%
<b>WHO performance status</b>		
0	46	28,6%
1	44	27,3%
2	30	18,6%
3	16	9,9%
4	1	0,6%
No data available	24	14,9%
<b>CML phase</b>		
Chronic phase (CP)	126	78,3%
Accelerated phase (AP)	7	4,3%
Blast crisis (BC)	5	3,1%
No data available	23	14,3%
<b>CML diagnosis</b>		
Molecular / cytogenetic studies done		
Conventional karyotyping	65	40,4%
Molecular analysis for bcr-abl	79	49,1%
p190	2	1,2%
p210	77	47,8%
Molecular / cytogenetic studies not done		
HGB (median g/l; range)	115	65-178
PLT (median 10 <sup>9</sup> /l; range)	447	16-2395
WBC (median 10 <sup>9</sup> /l; range)	74,8	6,7-717,0
BAS (median 10 <sup>9</sup> /l; range)	1,3	0,0-105,0
Blasts (median %; range)	1,0	0,0-68,5

## Characteristics of CP CML patients in age group of 0-60 years

Characteristic	No TKI *	With TKI *
<b>Age, years</b>		
<10	0	1
10-19	2	1
20-29	2	3
30-39	2	9
40-49	9	16
50-59	11	9
Age - median (range)	48 (14-58)	44 (9-58)
<b>Gender</b>		
Males	16	16
Females	10	23
<b>CML diagnosis</b>		
Ph+ / bcr-abl		
Confirmed	20	39
Not confirmed	6	0
HGB (median g/l; range)	118 (81-165)	120 (78-178)
PLT (median 10 <sup>9</sup> /l; range)	360 (68-2361)	476 (157-2395)**
WBC (median 10 <sup>9</sup> /l; range)	82 (10-717)	87 (12-459)
BAS (median 10 <sup>9</sup> /l; range)	1,4 (0,0-27,8)	1,6 (0,0-42,0)
Blasts (median %; range)	1,6 (0,0-7,0)	2,0 (0,0-9,0)

▶ \* TKI - Tyrosine kinase inhibitor

▶ \*\*  $p = 0,04$

**PART II**  
**SURVIVAL ANALYSIS**



## Median survival time of all CML patients

Group	Time (days)
EFS (95% CI)	545 (361-728)
By gender	
Male	545 (249-841) *
Female	560 (344-776) *
By age	
< 60 years	726 (503-948) *
≥ 60 years	350 (117-583) *
By CML phase	
Chronic	793 (585-1001) **
Accelerated	545 (101-988) **
Blast crisis	87 (41-133) **
OS (95% CI)	1363 (-)
By gender	
Male	1204 (852-1556) *
Female	Not reached *
By age	
< 60	Not reached **
≥ 60	832 (451-1213) **
By CML phase	
Chronic	Not reached **
Accelerated	591 (0-1205) **
Blast crisis	493 (0-1126) **

▶ \*  $p$  – not significant

▶ \*\*  $p < 0,01$

### Median survival time of all chronic phase CML patients

Group	Time (days)
EFS (95% CI)	793 (585-1001)
By gender	
Male	1019 (595-1443)*
Female	756 (521-991)*
By age	
< 60 years	756 (285-1227)*
≥ 60 years	793 (453-1093)*
OS (95% CI)	1234 (1124-1343) (mean)
By gender	
Male	1210 (1051-1370) (mean)*
Female	1260 (1114-1406) (mean)*
By age	
< 60	1339 (1205-1473) (mean)***
≥ 60	1098 (921-1275) (mean)***

▶ \*  $p$  – not significant

▶ \*\*  $p < 0,01$

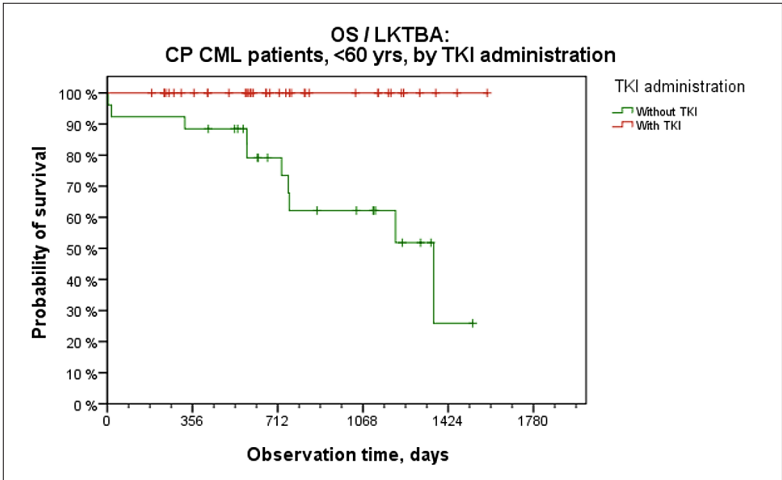
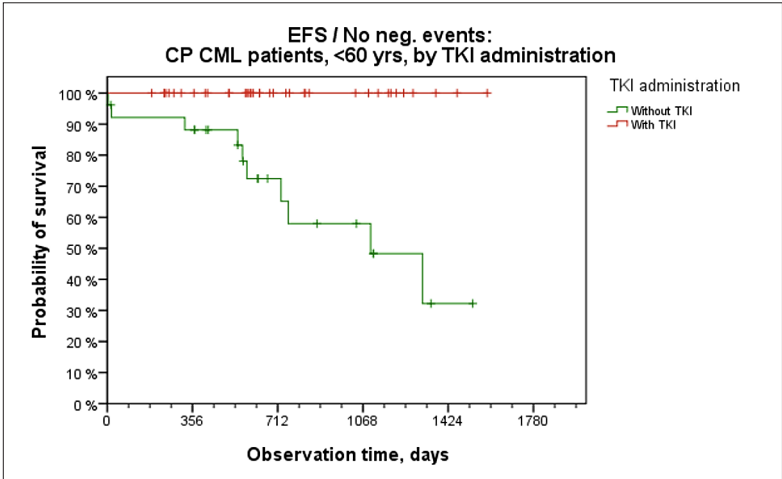
▶ \*\*\*  $p < 0,05$

### Median survival time of chronic phase CML patients in age group of 0-60 years

Group	Time (days)
EFS (95% CI)	
With TKI	Not reached *
No TKI	1100 (529-1671) *
OS (95% CI)	
With TKI	Not reached *
No TKI	1363 (729-1997) *

▶ \*  $p < 0,01$

**Kaplan-Meyer survival analysis of chronic phase CML patients in age group of 0-60 years**



**PART III**  
**TREATMENT RESULTS**  
**ACCORDING TO ELN**

### Treatment results of chronic phase CML patients in age group of 0-60 years followed according to ELN guidelines

Landmark	N followed	Hematological			Cytogenetic			
		CR	No CR	N/D	CCgR	PCgR	<PCgR	N/D
3 months	22 *	16	6	5	5	3	3	15
6 months	24 *	19	5	2	16	2	4	4
12 months	23 *	19	4	3	12	4	1	9

► \* of 26 treated with TKI.