



Krin

Teacher Education Department

About the Department

Remember your favorite teacher? At Maranatha, we believe in the teacher's potential to make a positive difference in the life of a child. You will have the opportunity to motivate, inspire, challenge, encourage, support, show patience, model forgiveness, and make a lasting impression on your students.

As a Christian, you may be able to give godly direction at a time in life when students feel vulnerable, misunderstood, or uncertain. Students need teachers who care about their future, and who are dedicated to challenging them to excel in character as well as in the classroom. They also need teachers who will help them read with understanding, write clearly, and think critically. Maranatha will equip you to be a Christian role model, no matter where you choose to teach. Imagine the difference one teacher can make. Imagine yourself making the difference.

Meet the Department Chair



William Licht has earned two master's degrees and is currently writing his doctoral dissertation. He teaches history and education classes at Maranatha and has previously served as Humanities Department Chair as well as faculty representative to the NCAA. He has also been a member of several academic committees. "If my students only learn one thing from my classes, I hope they would learn to be excited about what they teach," Mr. Licht said. "Enthusiasm is contagious."

Teacher Education Program

Teaching Credentials

Maranatha's Teacher Education Program is designed to qualify successful graduates for a teaching license from the Wisconsin Department of Public Instruction. Because Wisconsin maintains standards among the highest in the nation, its license is accepted for reciprocity in most states. (Check with your local state for acceptance/reciprocity policies.) The State of Wisconsin requires a full semester (18 weeks) of student teaching for licensure which is regularly completed in either one or two placements. This program usually (but not always) takes more than the normal 8 semesters to complete. After graduation, Teacher Education majors may choose to apply for a teaching license in Wisconsin or another state.

Whether students elect to pursue state licensure or not, all Teacher Education programs satisfy the requirements of the American Association of Christian Schools and qualify graduates to teach in Christian schools where a state license is not required by law.

Biblical Emphasis

Regardless of the program you choose, the biblical emphasis of Maranatha's teacher education program helps you teach effectively, put your faith in action, and be equipped to pass your knowledge of God to others. Because of this perspective, the Department requires that you take the following courses in residence at Maranatha:

- Junior Practicum and Student Teaching
- Elementary Education Majors: At least 12 hours in the Education Core including ELED 344: Curriculum & Methods in Reading
- Secondary Education Majors: (1) at least 12 hours of coursework in the subject field (mathematics for those majoring in Mathematics Education, etc.) and (2) the major methods course.
- EDUC 225: Human Relations
- EDUC 303: Educational Psychology
- A minimum residence requirement of the final 30 credits prior to and not including student teaching must be taken on campus.

Note: The residence requirement does not refer to nor include coursework taken off campus in the summer and through correspondence while continuing enrollment at Maranatha.

Title II Information

The total enrollment at Maranatha Baptist Bible College for the 2012-2013 fall semester was 722 residential undergraduate students. The Department of Teacher Education enrollment was 210, with 76 students in the Elementary Teacher Education degree programs and 134 in the Secondary Teacher Education degree programs.

The following statistics relate to the Teacher Education License Programs:

94: Number of students who have achieved Upper Level Status

68: Number of students in the license program who were in programs of supervised clinical experiences

11: fulltime faculty who supervised student teachers

1: Adjunct faculty who supervised student teachers

18-20: Total number of weeks required for student teaching

720: Total number of hours required for student teaching

Two Checkpoints

To ensure that you are ready to enter the classroom, you'll need to pass the following checkpoints before student teaching:

Admission to Upper Level Status (ULS)

Students normally apply for Upper Level Status at the end of their sophomore year. Achieving ULS is required before you are eligible to take any 300- or 400-level education courses (EDUC, ELED, SEED prefixes). To achieve ULS, you must meet the following requirements:

Coursework: You must pass the following courses with a grade of C- or better:

CASP 111: Fundamentals of Public Speaking
HUEN 121, 122: English Composition 1, 2
HUPS 131: General Psychology
EDUC 144: Foundations of Education
HUSO 141: Introduction to Sociology

GPA: A cumulative GPA of at least 2.30 (C+) is required for the standard program and 2.5 for the certification program.

Fieldwork: You must successfully complete the Sophomore Fieldwork Program.

PPST tests: You must have passing scores on the PPST tests.

Recommendation: You must receive a favorable recommendation from your major field advisor.

Application for Student Teaching

The following requirements must be met before you may be scheduled for student teaching:

GPA: The standard program requires a minimum cumulative GPA of 2.30. The certification program requires a minimum cumulative GPA of 2.75

Education Seminar: You must successfully complete the Education Seminar.

Field Work: At least 100 hours of field work must be completed, including Sophomore Fieldwork and Junior Practicum, which are completed one full semester before student teaching. Satisfactory ratings must be received for both Sophomore Fieldwork and Junior Practicum.

Upper Level Status: Admission to Upper Level Status is a prerequisite to 300- and 400-level education classes, (EDUC, ELED, and SEED) including student teaching.

Recommendation: You must receive a favorable recommendation from your major field advisor.

Assessment: Students in the license program must pass the required Praxis 2 content test.

Deadline: All course work for the program must be completed prior to student teaching. In addition the student must have the appropriate GPA and passing scores on the Praxis 2 content test prior to student teaching.

License Program Code

EC - MC: Early Childhood – Middle Childhood, infancy through 11 years

MC - EA: Middle Childhood – Early Adolescence, 6 through 13 years

EA-A: Early Adolescence – Adolescence, 10 through 21 years

EC-A: Early Childhood – Adolescence, infancy through 21 years

Teacher Education Minors

Elementary Education majors should select a minor that will enhance their knowledge base and marketability and also fulfill Wisconsin Department of Public Instruction license requirements. Choose from History, Mathematics, Coaching, Dramatic Productions, English, Science, Learning Disabilities, and Social Studies. Each minor will give you additional expertise in a specialized area that will help you become an even more competent teacher.

ELED minors for MC-EA

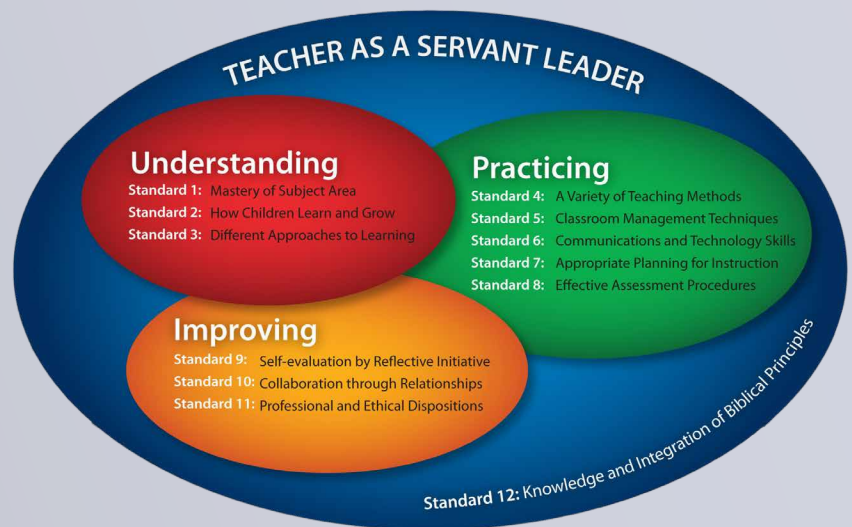
PI 34 of the Wisconsin Legislative code requires an elementary educator (MC-EA) to have a minor coupled with a major. PI 34 also stipulates what minors can be licensed and which unlicensable minors are acceptable. The lists of licensable and non-licensable acceptable minors are listed in the right sidebar. Course requirements for licensable minors are listed on the following page.

Licensable DPI Approved Minors

Coaching
Dramatic Productions
English
History
Learning Disabilities
Mathematics
Science (Broadfield)
Social Studies (Broadfield)

Minors Approved No additional License received

| | |
|-----------------|--------|
| Arranging Music | pg 110 |
| Biology | pg 23 |
| Music Education | pg 97 |
| Piano Pedagogy | pg 119 |
| Spanish | pg 140 |
| String Pedagogy | pg 121 |
| TESOL | pg 141 |
| Writing | pg 127 |



Coaching License 1540

| Code | Course | Hours |
|---|--|-------|
| ASSC 226 | Anatomy & Physiology 1 | 4 |
| ASSC 227 | Anatomy & Physiology 2 | 4 |
| SECO 235 | Methods of Coaching | 2 |
| SECO 236 | Foundations of Sport and Exercise Psychology | 2 |
| SEPE 241 | First Aid & Safety | 2 |
| SEPE 331 | Physiology of Exercise | 3 |
| SECO 334 | Training Room Techniques | 3 |
| SEPE 337 | Kinesiology | 3 |
| SECO 338 | Organization & Admin. of Athletics & P.E. | 3 |
| SECO 439 | Athletic Coaching Fieldwork | 1 |
| Techniques of Coaching (Choose 4 credits) | | 4 |

Minimum Hours Required 31

For the Concentration, take SECO 236, SEPE 241, and SECO 334, 4 hours of the Techniques of Coaching classes, and 2 hours of one of the Electives for a total of 15 hours.

History License 1725

| Code | Course | Hours |
|-----------------------------|----------------------------------|-------|
| HUHI 130 | The Modern World | 3 |
| HUHI 220 | Ancient Civilizations | 3 |
| HUHI 231 | United States History 1 | 3 |
| HUHI 232 | United States History 2 | 3 |
| HUHI 497 | Historical Method & Philosophy | 3 |
| History Electives (3 hours) | | |
| HUHI 250 | Modern East Asian History | 3 |
| HUHI 335 | Native American History | 3 |
| Electives (6 hours) | | |
| HUHI 230 | Early American Political Thought | 3 |
| HUHI 233 | History of England | 3 |
| HUHI 237 | Renaissance & Reformation | 3 |
| HUHI 245 | 20th Century History | 3 |
| HUHI 330 | Civil War & Reconstruction | 3 |
| HUHI 347 | Recent & Contemporary America | 3 |
| HUHI 352 | Modern European History | 3 |

Minimum Hours Required 24

Science (Broadfield) License 1634

| Code | Course | Hours |
|----------------------|--|-------|
| ELED 261 | Biology, Ecology, & Environmental Science for E.T. | 4 |
| ELED 262 | Chemistry & Physics for the Elem. Teacher | 4 |
| ELED 263 | Astronomy, Geology, & Meteorology for E.T. | 4 |
| Electives (12 hours) | | |
| ASSC 120 | General Biology 1 | 4 |
| ASSC 121 | General Biology 2 | 4 |
| ASSC 141 | General Chemistry 1 | 4 |
| ASSC 142 | General Chemistry 2 | 4 |
| ASSC 213 | Field Botany | 3 |
| ASSC 226 | Anatomy and Physiology 1 | 4 |
| ASSC 227 | Anatomy and Physiology 2 | 4 |
| ASSC 232 | Invertebrate Zoology | 4 |
| ASSC 233 | Vertebrate Zoology | 4 |
| ASSC 234 | Microbiology | 4 |
| ASSC 235 | Geology | 3 |
| ASSC 239 | Meteorology | 3 |
| ASSC 330 | Ecology | 3 |
| ASSC 441 | Adv. Physical Geography and Climate | 3 |

Minimum Hours Required 24

Dramatic Productions License 1325

| Code | Course | Hours |
|---------------------|---|-------|
| CASP 122 | Fundamentals of Oral Interpretation | 2 |
| CASP 223 | Advanced Oral Interpretation | 3 |
| CASP 231 | Dramatic Productions 1 | 3 |
| CASP 232 | Dramatic Productions 2 | 3 |
| CASP 326 | Script Writing | 3 |
| CASP 333 | Introduction to Acting | 2 |
| CASP 334 | Techniques in Makeup | 2 |
| CASP 338 | Directing Principles for Children's Productions | 2 |
| CASP 463 | Private Instruction-Dramatic Productions | 1 |
| CASP 464 | Private Instruction with Program-Drama. Prod. | 2 |
| Electives (4 hours) | | |
| CASP 251 | Audio Drama Workshop | 2 |
| CASP 325 | Storytelling | 2 |
| HUEN 332 | Literary Criticism | 3 |
| CASP 431 | Scenic Design & Lighting | 2 |
| CASP 434 | Costuming | 2 |
| CASP 447 | Debate | 2 |

Minimum Hours Required 25

Learning Disabilities License 1811

| Code | Course | Hours |
|-----------|---|-------|
| ELSP 281 | Intro. to Mental Retardation & Emotional Behavior Disorders | 3 |
| ELSP 282 | Introduction to Learning Disabilities | 3 |
| ELSP 283 | Introduction to Communication Disorders | 2 |
| ELSP 286 | Working with Parents/Community Agencies | 2 |
| SEPE 340 | Adaptive Physical Education | 3 |
| ELSP 361 | Transition and Life Skills Education | 2 |
| ELSP 381 | Educational Diagnosis & Assessment | 3 |
| ELSP 383 | Teaching Exceptional Children | 3 |
| ELSP 400 | Topics in Special Education | 2 |
| Electives | | |
| HUSL 227 | Beginning Sign Language | 2 |
| HUSL 228 | Intermediate Sign Language | 2 |
| SEPE 238 | Motor Learning | 2 |

Minimum Hours Required 23

For the Concentration, take ELSP281, 282, 283, 286 and SEPE340. For a total of 13 hours.

Social Studies (Broadfield) License 1734

| Code | Course | Hours |
|---------------------|------------------------------------|-------|
| HUPPS 131 | General Psychology | 3 |
| HUSO 134 | Introduction to Geography | 3 |
| ASSC 135 | Introduction to Physical Geography | 3 |
| HUSO 141 | Introduction to Sociology | 3 |
| BUMG 222 | Macroeconomics | 3 |
| HUHI 231 | United States History 1 | 3 |
| HUHI 232 | United States History 2 | 3 |
| HUSO 233 | National Government | 3 |
| HUPPS 233 | Developmental Psychology | 3 |
| HUSO 234 | State and Local Government | 3 |
| Electives (3 hours) | | |
| HUHI 250 | Modern East Asian History | 3 |
| HUHI 330 | Civil War & Reconstruction | 3 |
| HUHI 335 | Native American History | 3 |
| HUHI 347 | Recent & Contemporary America | 3 |
| HUHI 352 | Modern European History | 3 |

Minimum Hours Required 33

English License 1300

| Code | Course | Hours |
|--------------------|--|-------|
| HUEN 232 | American Masterpieces | 3 |
| HUEN 331 | Classical Literature | 3 |
| HUEN 333 | Shakespeare | 3 |
| HUEN 334 | Advanced Grammar & Linguistics | 3 |
| HUEN 339 | Advanced Writing | 3 |
| HUEN 344 | Adolescent Literature | 3 |
| SEED 351 | Teaching English | 3 |
| <i>Choose one:</i> | | |
| HUEN 233 | British Literature Survey to 1789 | 3 |
| HUEN 234 | British Literature Survey: 1789 to Present | 3 |

Minimum Hours Required 24

Mathematics License 1400

| Code | Course | Hours |
|-----------------------|--|-------|
| ELED 118 | Math for the Elementary Teacher 1 | 3 |
| ELED 218 | Math for the Elementary Teacher 2 | 3 |
| ELED 228 | Math for the Elementary Teacher 1 & 2* | 3 |
| ASMA 131 | College Algebra | 3 |
| ASMA 238 | Probability & Statistics | 3 |
| ASMA 346 | Number Theory | 2 |
| SEED 350 | Teaching Mathematics | 3 |
| Electives (5-8 hours) | | |
| ASMA 143 | Calculus 1 | 5 |
| ASMA 335 | Advanced Geometry | 3 |
| ASMA 339 | Abstract Algebra | 3 |
| ASMA 341 | Linear Algebra | 3 |
| ASMA 347 | Foundations of Mathematics | 2 |

Minimum Hours Required 24

*Students with an ACT Math score 21 or higher may enroll in ELED228 which is a 3 credit course in place of ELED 118 and ELED218. Students who take ELED 228 will take 8 hours of electives.

Early Childhood Education

You have the opportunity to mold and shape a child's mental, social, and spiritual life during the crucial formative years. Research shows that teachers can enhance young children's brain development by giving them a sense of security and aiding their ability to handle the stresses of life. Most importantly, your Christian testimony will help you model consistent Christlikeness and communicate truth to young children.

By selecting this program, you will be an Elementary Teacher Education major, specializing in early childhood. You'll be prepared to teach children from infancy through age 11. You'll learn to teach developmentally appropriate curricula and activities designed to stimulate children's mental, verbal, physical, and social skills, to encourage parental involvement, and to plant seeds of faith.

Major Minor Track

Career Options

- Preschool teacher
- Early childhood teacher
- Early childhood program supervisor
- Curriculum developer
- Mission field teacher

Suggested Schedule

Year 1

| | | | |
|-----------------------------------|-----------|-----------------------------------|-----------|
| Introduction to Sociology | 3 | Foundations of Education | 2 |
| Child Care & Development | 2 | Math for the Elementary Teacher 2 | 3 |
| Math for the Elementary Teacher 1 | 3 | Old or New Testament Survey | 3 |
| Old or New Testament Survey | 3 | English Composition 2 | 3 |
| English Composition 1 | 3 | Fundamentals of Public Speaking | 2 |
| The Modern World | 3 | General Psychology | 3 |
| | <u>17</u> | | <u>16</u> |

Year 2

| | | | |
|--|-----------|---|-----------|
| Sophomore Fieldwork | 0 | Upper Level Status | 0 |
| Children's Literature | 3 | The Exceptional Child | 3 |
| Instructional Media & Technology | 3 | Physical Activities for Preschool Child | 2 |
| Human Relations | 3 | Biology, Ecology, and Environmental | |
| Programs & Curric. for Preschool Child | 3 | Science for the Elementary Teacher | 4 |
| Curriculum & Methods in Art | 1 | Christian Life and Leadership | 3 |
| Curriculum & Methods in Music | 1 | Literature Elective | 3 |
| Baptist Heritage | 3 | Music Literature | 2 |
| | <u>17</u> | | <u>17</u> |

Year 3

| | | | |
|---------------------------------|-----------|------------------------------------|-----------|
| Curriculum & Methods in Reading | 3 | Curr & Methods in Mathematics | 3 |
| Cur & Meth in Social Studies | 3 | Diagnosis and Trtmt of Read Disabl | 3 |
| Junior Practicum | 0 | Admin. of Early Childhood Programs | 3 |
| Developmental Psychology | 3 | Astronomy, Geology & Meterology | |
| Parent Education & Involvement | 2 | for the Elementary Teacher | 4 |
| Geography course | 3 | Bible Doctrine 1 or 2 | 3 |
| Bible Doctrine 1 or 2 | 3 | | <u>16</u> |
| | <u>17</u> | | |

Year 4

| | | | |
|---------------------------------------|-----------|-------------------------------------|-----------|
| Education Seminar | 0 | Supervised Student Teaching-License | 12 |
| Pre-ST Portfolio Review | 0 | Post-ST Portfolio Review | 0 |
| Educational Psychology | 3 | | <u>12</u> |
| Teaching Language Arts | 3 | | |
| Classroom Management | 2 | | |
| Chemistry & Physics for Elem. Teacher | 4 | | |
| United States History 1 | 3 | | |
| Bible Elective | 3 | | |
| | <u>18</u> | | |



Early Childhood Education Major License Course Requirements

| Code | Course | Hours |
|---|--|-------|
| Elementary Teacher Ed. Requirements-License (49 hours) | | |
| HUSO 141 | Introduction to Sociology | 3 |
| EDUC 144 | Foundations of Education | 2 |
| EDUC 200 | Sophomore Fieldwork | 0 |
| EDUC 207 | Instructional Media & Technology | 3 |
| EDUC 225 | Human Relations ¹ | 3 |
| ELED 230 | Children's Literature | 3 |
| HUPS 233 | Developmental Psychology | 3 |
| EDUC 236 | The Exceptional Child | 3 |
| ELED 244 | Curriculum & Methods in Social Studies | 3 |
| EDUC 299 | Upper Level Status | 0 |
| EDUC 300 | Junior Practicum | 0 |
| EDUC 303 | Educational Psychology ² | 3 |
| EDUC 336 | Classroom Management | 2 |
| ELED 341 | Curriculum & Methods in Mathematics | 3 |
| ELED 342 | Teaching Language Arts | 3 |
| ELED 344 | Curriculum & Methods in Reading ¹ | 3 |
| EDUC 420 | Education Seminar | 0 |
| EDUC 422 | Pre-Student Teaching Portfolio Review | 0 |
| EDUC 443 | Supervised Student Teaching-License | 12 |
| EDUC 444 | Post-Student Teaching Portfolio Review | 0 |
| Early Childhood Education Minor (19 Hours) | | |
| ELEC 221 | Child Care and Development | 2 |
| ELEC 231 | Program & Curriculum for the Preschool Child | 3 |
| ELEC 236 | Physical Activities for the Preschool Child | 2 |
| ELED 253 | Curriculum and Methods in Art | 1 |
| ELED 254 | Curriculum and Methods in Music | 1 |
| ELEC 271 | Parent Education & Involvement | 2 |
| ELEC 281 | Screening, Diagnosis, & Prescription | 2 |
| ELEC 291 | Administration of Early Childhood Programs | 3 |
| ELSP 343 | Diagnosis and Treatment of Reading Disabilities | 3 |
| Basic Skills Proficiency Courses (24 Hours) | | |
| ELED 118 | Math for the Elementary Teacher 1 | 3 |
| ELED 218 | Math for the Elementary Teacher 2 | 3 |
| ELED 228 | Math for the Elementary Teacher 1 and 2 ³ | 3 |
| HUHI 231 | United States History 1 | 3 |
| ELED 261 | Biology, Ecology, and Environmental Science for the Elementary Teacher | 4 |
| ELED 262 | Chemistry & Physics for the Elem. Teacher | 4 |
| ELED 263 | Astronomy, Geology, and Meteorology for the Elementary Teacher | 4 |
| <i>Choose one:</i> | | |
| HUSO 134 | Introduction to Geography | 3 |
| ASSC 135 | Introduction to Physical Geography | 3 |

1. This course must be taken at Maranatha and may not be taken as Directed Study.
2. This course must be taken at Maranatha.
3. Students with an ACT Math score 21 or higher may enroll in ELED 228 which is a 3 credit course in place of ELED 118 and ELED 218.

Course Distribution

| | |
|--|------------|
| Elementary Teacher Education Major - License | 49 |
| Early Childhood Education Minor | 19 |
| Basic Skills Proficiency | 24 |
| Biblical Studies Core | 24 |
| Liberal Arts Core | 19 |
| Minimum hours required | 135 |



What's that class about?

See the course descriptions on pages 158-179

Elementary Teacher Education

Where can you instill young minds with a love for learning, for life, and for truth? In the classroom, you not only teach the three R's but you also have the opportunity to model integrity, practice fairness, recognize each child's strengths, and reward good effort.

Consider the profound influence you can have on the life of a child as a Christian teacher who is committed to excellence. Whether your classroom is in a Christian school, in a public school, at home, or on a mission field, Maranatha will equip you to fulfill your calling as an effective teacher.



Major Minor Track

Career Options

- Elementary school teacher
- Educational consultant
- Curriculum developer
- Mission field teacher

Suggested Schedule

Year 1

| | | | |
|-----------------------------------|----|-----------------------------------|----|
| Introduction to Sociology | 3 | Foundations of Education | 2 |
| Math for the Elementary Teacher 1 | 3 | Math for the Elementary Teacher 2 | 3 |
| Course in Minor Field | 3 | Old or New Testament Survey | 3 |
| Old or New Testament Survey | 3 | English Composition 2 | 3 |
| English Composition 1 | 3 | The Modern World | 3 |
| Fundamentals of Public Speaking | 2 | General Psychology | 3 |
| | 17 | | 17 |

Summer

| | | | |
|-----------------------|---|------------------|---|
| Course in Minor Field | 3 | Geography Course | 3 |
| | | | 6 |

Year 2

| | | | |
|----------------------------------|----|---|----|
| Sophomore Fieldwork | 0 | Upper Level Status | 0 |
| Sec. & Mid. School Tchng Methods | 2 | The Exceptional Child | 3 |
| Human Relations | 3 | Instructional Media & Technology | 3 |
| Curriculum & Methods in Music | 1 | Biology, Ecology, and Environmental Science for the Elem. Teacher | 4 |
| Curriculum & Methods in Art | 1 | Course in Minor Field | 3 |
| Children's Literature | 3 | Christian Life and Leadership | 3 |
| Course in Minor Field | 4 | Music Elective | 2 |
| Baptist Heritage | 3 | | 18 |
| | 17 | | |

Summer

| | | | |
|-----------------------|---|---------------------|---|
| Course in Minor Field | 3 | Literature Elective | 3 |
| | | | 6 |

Year 3

| | | | |
|--|----|---|----|
| Junior Practicum | 0 | Curriculum & Methods in Physical Education and Health | 2 |
| Development Psychology | 3 | Diagnosis & Treatment of Reading Disabilities | 3 |
| Curriculum & Methods in Reading | 3 | Curriculum & Methods of Mathematics | 3 |
| Curriculum & Methods in Social Studies | 3 | Astronomy, Geology, Meteorology for Elem Teacher | 4 |
| United States History 1 | 3 | Course in Minor Field | 3 |
| Course in Minor Field | 3 | Bible Doctrine 1 or 2 | 3 |
| Bible Doctrine 1 or 2 | 3 | | 18 |
| | 18 | | |

Summer

| | | | |
|-------------------------|---|----------------|---|
| United States History 2 | 3 | Bible Elective | 3 |
| | | | 6 |

Year 4

| | | | |
|------------------------------------|----|----------------------------|----|
| Education Seminar | 0 | Student Teaching-Licensure | 12 |
| Pre-ST Portfolio Review | 0 | Post-ST Portfolio Review | 0 |
| Educational Psychology | 3 | | 12 |
| Educational Assessment | 2 | | |
| Teaching Language Arts | 3 | | |
| Classroom Management | 2 | | |
| Chem. & Physics for the Elem Teach | 4 | | |
| Bible Elective | 3 | | |
| | 17 | | |



A Quality Education: We Have Proof!

Several nationally administered collegiate tests show that Maranatha's educational programs are top-notch. The Academic Profile Test, administered to entering freshmen and exiting seniors, assesses general college-level academic knowledge. Because of Maranatha's modified open admission policy, the entering freshman class has averaged at the 40th percentile on this test over the last 10 years. But results from senior testing indicate that students leave Maranatha in the 75th percentile—in the top 25% of all colleges in the norm group. For 10 consecutive years, Maranatha seniors have scored above the national average in nearly every one of the seven sub-scores.

Elementary Teacher Ed Major License Course Requirements

| Code | Course | Hours |
|---|---|-------|
| Elementary Teacher Education Requirements (60 hours) | | |
| HUSO 141 | Introduction to Sociology | 3 |
| EDUC 144 | Foundations of Education | 2 |
| EDUC 200 | Sophomore Fieldwork | 0 |
| EDUC 207 | Instructional Media & Technology | 3 |
| EDUC 225 | Human Relations ¹ | 3 |
| ELED 230 | Children's Literature | 3 |
| HUPS 233 | Developmental Psychology | 3 |
| EDUC 236 | The Exceptional Child | 3 |
| ELED 341 | Curriculum & Methods in Mathematics | 3 |
| SEED 241 | Sec. & Middle School Teaching Methods | 2 |
| ELED 244 | Curriculum & Methods in Social Studies | 3 |
| ELED 248 | C & M in Physical Education & Health | 2 |
| ELED 253 | Curriculum & Methods in Art | 1 |
| ELED 254 | Curriculum & Methods in Music | 1 |
| EDUC 299 | Upper Level Status | 0 |
| EDUC 300 | Junior Practicum | 0 |
| EDUC 303 | Educational Psychology ² | 3 |
| EDUC 336 | Classroom Management | 2 |
| ELED 342 | Teaching Language Arts | 3 |
| EDUC 342 | Educational Assessment | 2 |
| ELSP 343 | Diagnosis & Treatment of Reading Disabilities | 3 |
| ELED 344 | Curriculum & Methods in Reading ¹ | 3 |
| EDUC 420 | Education Seminar | 0 |
| EDUC 422 | Pre-Student Teaching Portfolio Review | 0 |
| EDUC 443 | Supervised Student Teaching-License | 12 |
| EDUC 444 | Post-Student Teaching Portfolio Review | 0 |

Approved Minor Required

Approved minors are listed on page 80 in the catalog. 22-31 credits required depending on your chosen minor.

Basic Skills Proficiency Courses (27 Hours)

| | | |
|--------------------|--|---|
| ELED 118 | Math for the Elementary Teacher 1 | 3 |
| ELED 218 | Math for the Elementary Teacher 2 | 3 |
| ELED 228 | Math for the Elementary Teacher 1 & 2 ³ | |
| ELED 261 | Biology, Ecology, and Environmental Science for the Elementary Teacher | 4 |
| ELED 262 | Chemistry & Physics for the Elem. Teacher | 4 |
| ELED 263 | Astronomy, Geology, and Meteorology for the Elementary Teacher | 4 |
| Social Studies: | | |
| HUHI 231 | United States History 1 | 3 |
| HUHI 232 | United States History 2 | 3 |
| <i>Choose one:</i> | | |
| HUSO 134 | Introduction to Geography | 3 |
| ASSC 135 | Introduction to Physical Geography | 3 |

1. This course must be taken at Maranatha and may not be taken as a directed study.

2. This course must be taken at Maranatha.

3. Students with an ACT Math score 21 or higher may enroll in ELED 228, which is a 3 credit course, in place of ELED 118 and ELED 218.

Course Distribution

| | |
|--|------------|
| Elementary Teacher Education Major-License | 60 |
| Basic Skills Proficiency | 27 |
| Minimum Minor Requirements-License | 22 |
| Biblical Studies Core | 24 |
| Liberal Arts Core | 19 |
| Minimum hours required | 152 |

The standard program, which is not licensed by the State of Wisconsin, does not require a minor. The standard Elementary Teacher Education Major is 48 hours, the Basic Skills Proficiency is 27 hours, the Biblical Studies Core is 24 hours, and its General Studies Core is 29 hours, for a total of 128 semester hours. See the academic worksheet for details or contact the Registrar's Office.

Learning Disabilities

License 1811
MC-EA License levels

Children with learning disabilities require specialized instruction, care, and attention. If you enjoy encouraging children who have special challenges and could see yourself serving as a classroom teacher in regular and inclusive settings or as a special education consultant, consider adding this minor to your major. Besides valuable Bible and general studies courses, you'll receive hands-on training in assessment, behavior management, curriculum, and instruction for a variety of exceptionalities, particularly learning disabilities. You'll also gain a solid understanding of the many federal laws that govern special education.

In today's modern and inclusive education system, the vast majority of students receiving special education services are taught in the regular education classroom. Consequently, every teacher will have to know how to meet the special needs of these students.

If you are an Elementary Education major, this minor adds an extra area of specialization that will make you more valuable as a teacher. And, unlike many other special education programs in secular and Christian colleges and universities, this program offers complete preparation in both elementary education and in learning disabilities. Of course, non-education majors (such as Missions, Biblical Counseling, or Humanities) may also select a minor in Learning Disabilities.

Major Minor Concentration

Career Options

- Classroom teacher
- Special education consultant to classroom teacher
- Learning Disabilities Specialist

Learning Disabilities Minor License

| Code | Course | Hours |
|---------------------------|---|-------|
| ELSP 281 | Intro. to Mental Retardation & Emotional/Behavior Disorders | 3 |
| ELSP 282 | Introduction to Learning Disabilities | 3 |
| ELSP 283 | Introduction to Communication Disorders | 2 |
| ELSP 286 | Working with Parents/Community Agencies | 2 |
| SEPE 340 | Adaptive Physical Education | 3 |
| ELSP 361 | Transition and Life Skills Education | 2 |
| ELSP 381 | Educational Diagnosis & Assessment | 3 |
| ELSP 383 | Teaching Exceptional Children | 3 |
| ELSP 400 | Topics in Special Education | 2 |
| Electives (none required) | | |
| HUSL 227 | Beginning Sign Language | 2 |
| HUSL 228 | Intermediate Sign Language | 2 |
| SEPE 238 | Motor Learning | 2 |

Minimum Hours Required 23

For the Concentration, take ELSP281, 282, 283, 286 and SEPE340. For a total of 13 hours.

Faculty Spotlight



Dr. Christine Lincoln

Dr. Christine Lincoln brings both academic and practical skills to her classes. She taught in an elementary school for 20 years, but also earned a master's degree and a Doctor of Education degree in Curriculum and Instruction. Her experience prior to coming to Maranatha in 2011 also includes being chair of an Elementary Education Department. "I love helping my students acquire the tools they will need to be successful in the classroom," Dr. Lincoln said. "My desire is to train quality Christian teachers."



Jeff Pill

Maranatha men's soccer coach Jeff Pill teaches several courses in the Physical Education and Health, Coaching, and Sport Management programs. Coach Pill previously served as Women's National Staff Coach for U.S. Soccer and assistant coach for the U19 National Team. He also helped train the 1996 U.S. Women's Olympic team. Pill's teams at The Derryfield School in New Hampshire won 69 consecutive games and claimed seven consecutive state championships (1986-1992).



See the complete list of faculty at www.mbbc.edu/academics/faculty

Biological Science Education

High school students must learn to appreciate the complexity and order of God’s creation. They need to understand the necessity of that structure and its uniqueness, all demonstrated in the world around us—from cells and microbes to plants, animals, and birds. Are you ready to become a teacher who can effectively pass this knowledge on to them?

Maranatha’s Biological Science Education major will equip you for that task. The course sequence is similar to that of the Science Education major, but with a particular emphasis on biology courses—botany, zoology, microbiology, ornithology, and genetics.

You will also get a foundation of general science education classes, including chemistry, ecology, and physiology. Your path to the classroom concludes with a full semester of student teaching. You may elect to simply follow the standard program or you might pursue a path that fulfills the Wisconsin Department of Public Instruction’s license requirements.

Major Minor Track

Career Options

- Science teacher
- Biologist
- Lab technician
- Research technician
- Conservationist

Suggested Schedule

Year 1

| | | | |
|-----------------------------|----|---------------------------------|----|
| Introduction to Sociology | 3 | Foundations of Education | 2 |
| General Biology 1 | 4 | General Biology 2 | 4 |
| Old or New Testament Survey | 3 | Old or New Testament Survey | 3 |
| English Composition 1 | 3 | English Composition 2 | 3 |
| The Modern World | 3 | General Psychology | 3 |
| | 16 | Fundamentals of Public Speaking | 2 |
| | | | 17 |

Year 2

| | | | |
|----------------------------------|----|-------------------------------|----|
| General Chemistry 1 | 4 | General Chemistry 2 | 4 |
| Biology Elective | 3 | Biology Elective | 4 |
| The Exceptional Child | 3 | Sophomore Fieldwork | 0 |
| Instructional Media & Technology | 3 | Human Relations | 3 |
| Baptist Heritage | 3 | Secondary School Reading | 3 |
| | 16 | Christian Life and Leadership | 3 |
| | | | 17 |

Summer

| | | | |
|-------------------------|---|----------------|---|
| United States History 1 | 3 | Music Elective | 2 |
| | | | 5 |

Year 3

| | | | |
|--------------------------|----|--|----|
| Upper Level Status | 0 | Anatomy and Physiology 2 | 4 |
| Anatomy and Physiology 1 | 4 | Ecology | 3 |
| Biology Elective | 3 | Lab & Field Investigation (Biology) | 2 |
| Developmental Psychology | 3 | Sec. & Middle School Teaching Methods2 | 3 |
| Junior Practicum | 0 | Bible Doctrine 1 or 2 | 3 |
| Educational Assessment | 2 | United States History 2 | 3 |
| Classroom Management | 2 | | 17 |
| Bible Doctrine 1 or 2 | 3 | | |
| | 17 | | |

Summer

| | | | |
|----------------|---|---------------------|---|
| Bible Elective | 3 | Literature Elective | 3 |
| | | | 6 |

Year 4

| | | | |
|-------------------------|----|------------------------------------|----|
| Education Seminar | 0 | Supervised Student Teaching-Licene | 12 |
| Pre-ST Portfolio Review | 0 | Post-ST Portfolio Review | 0 |
| Biology Elective | 4 | | 12 |
| Educational Psychology | 3 | | |
| Teaching Science | 3 | | |
| Bible Elective | 3 | | |
| Math Elective | 3 | | |
| | 16 | | |

License 1605 EA-A License levels

Biological Science Education License Course Requirements



Biological Science Education and other science education majors will find a wide-open job field upon graduation. The shortage of qualified science teachers in middle schools and high schools has become acute in many areas. Some recent statistics:

- Schools will need 200,000 new science and math teachers by 2018.
- 31 percent of secondary schools have recently experienced “serious hiring difficulties” in mathematics, life sciences, and physical sciences.
- The shortage of high school science teachers in Texas increased 80 percent between 2004 and 2008.
- In 10 states, fewer than 6 of 10 middle school science teachers were certified in their subject areas.

Sources: *The Christian Science Monitor*, The Consortium for Policy Research in Education, *The Dallas Morning News*.

| Code | Course | Hours |
|--|--|-------|
| Teacher Education Requirements (44 hours) | | |
| HUSO 141 | Introduction to Sociology | 3 |
| EDUC 144 | Foundations of Education | 2 |
| EDUC 200 | Sophomore Fieldwork | 0 |
| EDUC 207 | Instructional Media & Technology | 3 |
| EDUC 225 | Human Relations ¹ | 3 |
| SEED 230 | Secondary School Reading | 3 |
| HUPS 233 | Developmental Psychology | 3 |
| EDUC 236 | The Exceptional Child | 3 |
| SEED 241 | Sec. & Middle School Teaching Methods | 2 |
| EDUC 299 | Upper Level Status | 0 |
| EDUC 300 | Junior Practicum | 0 |
| EDUC 303 | Educational Psychology ² | 3 |
| EDUC 336 | Classroom Management | 2 |
| EDUC 342 | Educational Assessment | 2 |
| SEED 356 | Teaching Science ¹ | 3 |
| EDUC 420 | Education Seminar | 0 |
| EDUC 422 | Pre-Student Teaching Portfolio Review | 0 |
| EDUC 443 | Supervised Student Teaching-License | 12 |
| EDUC 444 | Post-Student Teaching Portfolio Review | 0 |

| | | |
|--|-------------------------------------|---|
| Science Requirements (29 hours) | | |
| ASSC 120 | General Biology 1 | 4 |
| ASSC 121 | General Biology 2 | 4 |
| ASSC 141 | General Chemistry 1 | 4 |
| ASSC 142 | General Chemistry 2 | 4 |
| ASSC 226 | Anatomy and Physiology 1 | 4 |
| ASSC 227 | Anatomy and Physiology 2 | 4 |
| ASSC 330 | Ecology | 3 |
| ASSC 433 | Lab & Field Investigation (Biology) | 2 |

| | | |
|-------------------------------------|-----------------------------|---|
| Biology Electives (14 Hours) | | |
| ASSC 213 | Field Botany | 3 |
| ASSC 232 | Invertebrate Zoology | 4 |
| ASSC 233 | Vertebrate Zoology | 4 |
| ASSC 234 | Microbiology | 4 |
| ASSC 240 | Field Ornithology | 2 |
| ASSC 325 | Genetics | 3 |
| ASSC 420 | Molecular Genetics Research | 3 |
| ASSC 436 | Cell & Molecular Biology 1 | 3 |
| ASSC 437 | Cell & Molecular Biology 2 | 3 |

1. This course must be taken at Maranatha and may not be taken as Directed Study.
2. This course must be taken at Maranatha.

| | |
|--|------------|
| Course Distribution | |
| Biological Science Education Major - License | 87 |
| Biblical Studies Core | 24 |
| Liberal Arts Core | 28 |
| Minimum hours required | 139 |

English Education

Would you like to cross paths with some of the greatest writers of all time? Whether you prefer Shakespeare or F. Scott Fitzgerald, a wide range of literature is waiting for you to read, analyze, and critique—always in light of the Word of God. The English education program will teach you to exercise critical thinking skills and understand the grammatical and linguistic principles behind the English language. You'll also sharpen your own composition skills in a variety of genres such as creative, technical, journalistic, and argumentative writing.

Through dynamic education classes, students in English Education gain an understanding of the history, philosophy, and modern trends of education, as well as the latest technology and teaching techniques. By the time you leave Maranatha, you'll be ready to engage others in an exciting and challenging world of literature, composition, and grammar.



Major Minor Track

Career Options

- Teacher
- Writer
- Journalist
- Proofreader
- Editor
- Literacy tutor
- Writing lab coordinator
- Librarian

Suggested Schedule

Year 1

| | | | |
|---------------------------------|----|-----------------------------|----|
| Introduction to Sociology | 3 | Foundations of Education | 2 |
| Old or New Testament Survey | 3 | Old or New Testament Survey | 3 |
| English Composition 1 | 3 | English Composition 2 | 3 |
| The Modern World | 3 | General Psychology | 3 |
| Math or Science Elective | 3 | Math or Science Elective | 3 |
| Fundamentals of Public Speaking | 2 | Music Elective | 2 |
| | 17 | | 16 |

Summer

| | |
|-----------------------|---|
| American Masterpieces | 3 |
|-----------------------|---|

Year 2

| | | | |
|-----------------------------------|----|---|----|
| Human Relations | 3 | Secondary School Reading | 3 |
| Instructional Media & Technology | 3 | Sophomore Fieldwork | 0 |
| Composition & Literature | 3 | Shakespeare | 3 |
| British Literature Survey to 1789 | 3 | British Literature Survey: 1789-Present | 3 |
| Baptist Heritage | 3 | Developmental Psychology | 3 |
| U.S. History 1 | 3 | Christian Life and Leadership | 3 |
| | 18 | U.S. History 2 | 3 |
| | | | 18 |

Year 3

| | | | |
|---------------------------------------|----|---------------------------------|----|
| Upper Level Status | 0 | Educational Psychology | 3 |
| The Exceptional Child | 3 | Adolescent Literature | 3 |
| Advanced Writing | 3 | Junior Practicum | 0 |
| Sec. & Middle School Teaching Methods | 2 | Literary Criticism | 3 |
| Classroom Management | 2 | Advanced Grammar & Linguistics | 3 |
| Bible Doctrine 1 or 2 | 3 | History of the English Language | 2 |
| Math or Science Elective | 3 | Bible Doctrine 1 or 2 | 3 |
| | 16 | | 17 |

Year 4

| | | | |
|-------------------------|----|-------------------------------------|----|
| Education Seminar | 0 | Supervised Student Teaching-License | 12 |
| Pre-ST Portfolio Review | 0 | Post-ST Portfolio Review | 0 |
| English Courses | 6 | | 12 |
| Educational Assessment | 2 | | |
| Teaching English | 3 | | |
| Bible Elective | 6 | | |
| | 17 | | |



Ministry Is Not Just for Bible Majors

Maranatha believes that ministry is not just for pastors and missionaries—it’s for every Christian. At Maranatha, no matter what your major, you can gain experience serving in the local church, in music ensembles, on school-sponsored mission trips, and in ministries ranging from jail and nursing home visits to tutoring disadvantaged children. Maranatha anchors each of its programs to a strong Bible core and teaches content from a biblical worldview.

English Education Major License Course Requirements

| Code | Course | Hours |
|--|--|-------|
| English Education Requirements (79 hours) | | |
| HUSO 141 | Introduction to Sociology | 3 |
| EDUC 144 | Foundations of Education | 2 |
| EDUC 200 | Sophomore Fieldwork | 0 |
| EDUC 207 | Instructional Media & Technology | 3 |
| EDUC 225 | Human Relations ¹ | 3 |
| SEED 230 | Secondary School Reading | 3 |
| HUPS 233 | Developmental Psychology | 3 |
| EDUC 236 | The Exceptional Child | 3 |
| SEED 241 | Sec. & Middle School Teaching Methods | 2 |
| EDUC 299 | Upper Level Status | 0 |
| EDUC 300 | Junior Practicum | 0 |
| EDUC 303 | Educational Psychology ² | 3 |
| EDUC 336 | Classroom Management | 2 |
| EDUC 342 | Educational Assessment | 2 |
| SEED 351 | Teaching English ¹ | 3 |
| EDUC 420 | Education Seminar | 0 |
| EDUC 422 | Pre-Student Teaching Portfolio Review | 0 |
| EDUC 443 | Supervised Student Teaching-License | 12 |
| EDUC 444 | Post-Student Teaching Portfolio Review | 0 |
| English Requirements (35 hours) | | |
| HUEN 232 | American Masterpieces | 3 |
| HUEN 233 | British Literature Survey to 1789 | 3 |
| HUEN 234 | British Literature Survey: 1789 to Present | 3 |
| HUEN 236 | Composition & Literature | 3 |
| HUEN 239 | Advanced Writing | 3 |
| HUEN 332 | Literary Criticism | 3 |
| HUEN 333 | Shakespeare | 3 |
| HUEN 334 | Advanced Grammar & Linguistics | 3 |
| HUEN 344 | Adolescent Literature | 3 |
| HUEN 442 | History of the English Language | 2 |
| Electives (6 hours) | | |
| HUEN 237 | Journalism ⁺ | 3 |
| HUEN 241 | Technical Writing | 3 |
| CASP 326 | Script Writing | 3 |
| HUEN 331 | Classical Literature | 3 |
| HUEN 341 | Colonial American Literature | 3 |
| HUEN 350 | World Literature | 3 |
| HUEN 421 | Creative Writing ⁺ | 3 |
| HUEN 436 | Romantic Literature | 3 |
| HUEN 438 | Renaissance Literature | 3 |
| HUEN 440 | Topics in Literature | 3 |
| HUEN 444 | 20th Century Literature | 3 |

⁺ May not use both HUEN 237 and HUEN 421 to satisfy the electives.

1. This course must be taken at Maranatha and may not be taken as Directed Study.

2. This course must be taken at Maranatha.

Course Distribution

| | |
|---------------------------------------|------------|
| English Education Major-Certification | 79 |
| Biblical Studies Core | 24 |
| Liberal Arts Core | 31 |
| Minimum hours required | 134 |

History Education

“Those who cannot learn from history are doomed to repeat it.”

This saying, though often repeated, is a stern reminder that history is important to understand. Secular textbooks and professors increasingly “revise” history by leaving out religious references. At Maranatha, you will receive the full picture. The History Education major provides the prospective teacher of history with competent knowledge of historical events, as considered through a biblical worldview.

With courses in education and history, you’ll acquire an understanding of the global development of civilization as well as solid pedagogical skills for teaching. Get ready to gain experience in planning, supplementing, and evaluating the teaching-learning process.

If you want to major in another educational discipline, consider adding the History minor, which emphasizes the Judeo-Christian foundations of western civilization and American history. It is particularly helpful in developing a biblical perspective of history.

For more teaching options that include history, see the Social Studies Education program, p. 104.

Major Minor Track

Career Options

- History teacher
- Archivist
- Researcher
- Museum curator
- History curriculum developer
- Historical site guide

Suggested Schedule

| Year 1 | | | |
|-----------------------------------|----|-----------------------------|----|
| Introduction to Sociology | 3 | Foundations of Education | 2 |
| The Modern World | 3 | Old or New Testament Survey | 3 |
| Old or New Testament Survey | 3 | English Composition 2 | 3 |
| English Composition 1 | 3 | General Psychology | 3 |
| Fundamentals of Public Speaking | 2 | Math or Science Elective | 3 |
| Concepts in Environmental Science | 3 | Music Elective | 2 |
| | 17 | | 16 |

| Year 2 | | | |
|----------------------------------|----|---------------------------------|----|
| United States History 1 | 3 | United States History 2 | 3 |
| Early American Political Thought | 3 | Choose HUII 250 or HUII 335 | 3 |
| Ancient Civilizations | 3 | Sec. & Mdl Sch. Teaching Mthds. | 2 |
| Human Relations | 3 | Sophomore Fieldwork | 0 |
| Instructional Media & Technology | 3 | Developmental Psychology | 3 |
| Christian Life and Leadership | 3 | History Elective | 3 |
| | 18 | Baptist Heritage | 3 |
| | | | 17 |

| Summer | |
|---------------------|---|
| Literature Elective | 3 |

| Year 3 | | | |
|-----------------------|----|--------------------------|----|
| Upper Level Status | 0 | Educational Assessment | 2 |
| The Exceptional Child | 3 | Teaching Social Studies | 3 |
| Classroom Management | 2 | Secondary School Reading | 3 |
| 20th Century History | 3 | Junior Practicum | 0 |
| History Elective | 3 | History Elective | 3 |
| Bible Doctrine 1 or 2 | 3 | Bible Doctrine 1 or 2 | 3 |
| Macroeconomics | 3 | Math or Science Elective | 3 |
| | 17 | | 17 |

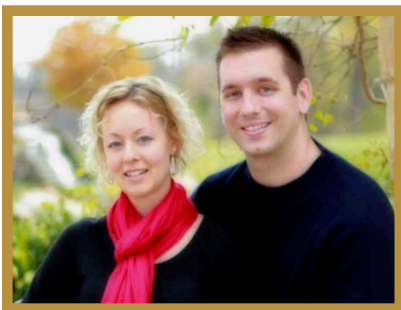
| Year 4 | | | |
|--------------------------------|----|-------------------------------------|----|
| Education Seminar | 0 | Supervised Student Teaching-License | 12 |
| Pre-ST Portfolio Review | 0 | Post-ST Portfolio Review | 0 |
| Historical Method & Philosophy | 3 | | 12 |
| History Elective | 3 | | |
| Educational Psychology | 3 | | |
| Bible Elective | 6 | | |
| | 15 | | |



★ Alumni Spotlight

Andrew Vawter ('06) teaches five sections of freshman geography at Wylie East High School in Wylie, TX. He is also a varsity running backs coach for the football team. "I really enjoy the interaction with the kids," Vawter said. "I love having the opportunity to influence them in a positive way on a daily basis.

I have found that the classes I took at Maranatha were very beneficial. All of the economics, history, and social studies classes I took were directly related to what I do now."



History Education Major License Course Requirements

| Code | Course | Hours |
|--|--|-------|
| History Education Requirements (80 hours) | | |
| HUSO 141 | Introduction to Sociology | 3 |
| EDUC 144 | Foundations of Education | 2 |
| EDUC 200 | Sophomore Fieldwork | 0 |
| EDUC 207 | Instructional Media & Technology | 3 |
| EDUC 225 | Human Relations ¹ | 3 |
| SEED 230 | Secondary School Reading | 3 |
| HUPS 233 | Developmental Psychology | 3 |
| EDUC 236 | The Exceptional Child | 3 |
| SEED 241 | Sec. & Middle School Teaching Methods | 2 |
| EDUC 299 | Upper Level Status | 0 |
| EDUC 300 | Junior Practicum | 0 |
| EDUC 303 | Educational Psychology ² | 3 |
| EDUC 336 | Classroom Management | 2 |
| EDUC 342 | Educational Assessment | 2 |
| SEED 353 | Teaching Social Studies ¹ | 3 |
| EDUC 420 | Education Seminar | 0 |
| EDUC 422 | Pre-Student Teaching Portfolio Review | 0 |
| EDUC 443 | Supervised Student Teaching-License | 12 |
| EDUC 444 | Post-Student Teaching Portfolio Review | 0 |

History Requirements (36 hours)

| | | |
|----------|----------------------------------|---|
| HUHI 130 | The Modern World | 3 |
| HUHI 220 | Ancient Civilizations | 3 |
| HUHI 230 | Early American Political Thought | 3 |
| HUHI 231 | United States History 1 | 3 |
| HUHI 232 | United States History 2 | 3 |
| HUHI 245 | 20th Century History | 3 |
| HUHI 497 | Historical Method & Philosophy | 3 |

Choose one:

| | | |
|----------|---------------------------|---|
| HUHI 250 | Modern East Asian History | 3 |
| HUHI 335 | Native American History | 3 |

Electives (12 hours)

| | | |
|----------|---------------------------------|---|
| HUHI 233 | History of England | 3 |
| HUHI 237 | Renaissance & Reformation | 3 |
| HUHI 330 | Civil War & Reconstruction | 3 |
| HUHI 347 | Recent & Contemporary America | 3 |
| HUHI 352 | Modern European History | 3 |
| HUHI 354 | American Constitutional History | 3 |

1. This course must be taken at Maranatha and may not be taken as Directed Study.

2. This course must be taken at Maranatha.

Course Distribution

| | |
|-----------------------------------|----|
| History Education Major - License | 80 |
| Biblical Studies Core | 24 |
| Liberal Arts Core | 28 |

Minimum hours required 132

Math Education

In today's global economy, students need to know how to apply math more than ever. From problem-solving to percentages, math is practical for everyday life and for a career. Do you have a good head for numbers and want to pass on your skills to young learners? Maranatha's Mathematics Education major trains students to sharpen and develop their math abilities to use them in a teaching ministry. America has an acute shortage of math teachers, so the Math Education degree will open doors to a promising teaching career.

A Math Education major also opens doors beyond the classroom and allows you to pursue graduate work in other disciplines, such as science or medicine. Math allows you to measure data in science and research, determine drug dosages in medicine, or calculate and interpret statistics in politics, economics, and even baseball.

Major Minor Track

Career Options

- Mathematics teacher
- Statistician
- Mathematics curriculum writer
- Accountant

Suggested Schedule

Year 1

| | | | |
|-----------------------------|----|-----------------------------|----|
| Introduction to Sociology | 3 | Foundations of Education | 2 |
| Calculus 1 | 5 | Calculus 2 | 5 |
| Math Seminar 1 | 1 | Old or New Testament Survey | 3 |
| Old or New Testament Survey | 3 | English Composition 2 | 3 |
| English Composition 1 | 3 | The Modern World | 3 |
| Music Elective | 2 | | 16 |
| | 17 | | |

Year 2

| | | | |
|---------------------------------------|----|---------------------------------|----|
| Sec. & Middle School Teaching Methods | 2 | Sophomore Fieldwork | 0 |
| Calculus 3 | 3 | Human Relations | 3 |
| Developmental Psychology | 3 | Linear Algebra | 3 |
| Baptist Heritage | 3 | Probability & Statistics | 3 |
| Science Elective | 3 | Christian Life and Leadership | 3 |
| General Psychology | 3 | Fundamentals of Public Speaking | 2 |
| | 17 | Literature Elective | 3 |
| | | | 17 |

Year 3

| | | | |
|----------------------------------|----|---------------------------|----|
| Upper Level Status | 0 | Junior Practicum | 0 |
| The Exceptional Child | 3 | Educational Psychology | 3 |
| Instructional Media & Technology | 3 | Secondary School Reading | 3 |
| Advanced Geometry | 3 | Teaching Math | 3 |
| Abstract Algebra | 3 | Math Seminar 2 | 1 |
| Bible Doctrine 1 or 2 | 3 | Bible Doctrine 1 or 2 | 3 |
| Open Elective | 1 | American Studies Elective | 3 |
| | 16 | | 16 |

Year 4

| | | | |
|-------------------------|----|-------------------------------------|----|
| Education Seminar | 0 | Supervised Student Teaching-License | 12 |
| Pre-ST Portfolio Review | 0 | Post-ST Portfolio Review | 0 |
| Classroom Management | 2 | | 12 |
| Educational Assessment | 2 | | |
| Math Courses | 4 | | |
| Bible Elective | 3 | | |
| Science Elective | 3 | | |
| | 17 | | |

License 1400 EA-A License levels



★ Alumni Spotlight

Matt Harmless ('00) was named Teacher of the Year at Mary Miller Junior High School and for the entire Georgetown-Ridge Farm (IL) School District. Harmless, who has taught junior high and high school math there since 2009, is also pastor of Edgewood Baptist Church in Danville, IL. "We have had some tragedies in our school, and God began opening doors for



me to encourage kids and staff members who were struggling with the things we've been through," Harmless said. "I am not a better teacher than anybody else, but I am glad to have had a rapport with people as someone who cares."

Mathematics Education Major License Course Requirements

| Code | Course | Hours |
|--|--|-------|
| Mathematics Education Requirements (75 hours) | | |
| HUSO 141 | Introduction to Sociology | 3 |
| EDUC 144 | Foundations of Education | 2 |
| EDUC 200 | Sophomore Fieldwork | 0 |
| EDUC 207 | Instructional Media & Technology | 3 |
| EDUC 225 | Human Relations ¹ | 3 |
| SEED 230 | Secondary School Reading | 3 |
| HUPS 233 | Developmental Psychology | 3 |
| EDUC 236 | The Exceptional Child | 3 |
| SEED 241 | Sec. & Middle School Teaching Methods | 2 |
| EDUC 299 | Upper Level Status | 0 |
| EDUC 300 | Junior Practicum | 0 |
| EDUC 303 | Educational Psychology ² | 3 |
| EDUC 336 | Classroom Management | 2 |
| EDUC 342 | Educational Assessment | 2 |
| SEED 350 | Teaching Mathematics ¹ | 3 |
| EDUC 420 | Education Seminar | 0 |
| EDUC 422 | Pre-Student Teaching Portfolio Review | 0 |
| EDUC 443 | Supervised Student Teaching-License | 12 |
| EDUC 444 | Post-Student Teaching Portfolio Review | 0 |

Mathematics Requirements (31 hours)

| | | |
|----------------------------|----------------------------|---|
| ASMA 140 | Math Seminar 1 | 1 |
| ASMA 143 | Calculus 1 | 5 |
| ASMA 232 | Calculus 2 | 5 |
| ASMA 234 | Calculus 3 | 3 |
| ASMA 238 | Probability & Statistics | 3 |
| ASMA 301 | Math Seminar 2 | 1 |
| ASMA 335 | Advanced Geometry | 3 |
| ASMA 339 | Abstract Algebra | 3 |
| ASMA 341 | Linear Algebra | 3 |
| Electives (4 hours) | | |
| ASMA 343 | Statistics 2 | 2 |
| ASMA 346 | Number Theory | 2 |
| ASMA 347 | Foundations of Mathematics | 2 |

1. This course must be taken at Maranatha and may not be taken as Directed Study.
2. This course must be taken at Maranatha.

Course Distribution

| | |
|---------------------------------------|------------|
| Mathematics Education Major - License | 75 |
| Biblical Studies Core | 24 |
| Liberal Arts Core | 28 |
| Open Electives | 1 |
| Minimum hours required | 128 |

Mathematics Education Minor License 1400

For Secondary Education students

| Code | Course | Hours |
|-----------------------------|--------------------------|-------|
| ASMA 140 | Math Seminar 1 | 1 |
| ASMA 143 | Calculus 1 | 5 |
| ASMA 232 | Calculus 2 | 5 |
| ASMA 238 | Probability & Statistics | 3 |
| ASMA 301 | Math Seminar 2 | 1 |
| ASMA 335 | Advanced Geometry | 3 |
| ASMA 346 | Number Theory | 2 |
| SEED 350 | Teaching Mathematics | 3 |
| Choose One (3 hours) | | |
| ASMA 339 | Abstract Algebra | 3 |
| ASMA 341 | Linear Algebra | 3 |

Minimum Hours Required 26

Music Education

✓ Major ✓ Minor □ Track

If you'd like to teach music, consider the advantages of Maranatha's Music Education major. Maranatha's fully-accredited program provides students completing this major with the background needed for excellent classroom teaching, and prepares them for acceptance into graduate schools.

Maranatha's courses emphasize the most current music learning theories and methodologies. Graduates qualify to take certification exams in early childhood music through high school music, including general music, instrumental music (band and orchestra), and choral music.

Our music education faculty has broad experience teaching in public and Christian schools that transfers very positively to the 21st-century classroom.

Maranatha Music Education majors qualify to test for the Wisconsin Department of Public Instruction license, which is one of the strongest in the nation when seeking license reciprocity in other states. With a degree from Maranatha, you'll be equipped to minister in music wherever the Lord leads you.

Suggested Schedule

Year 1

| | | | |
|------------------------------------|------|-----------------------------------|------|
| Introduction to Sociology | 3 | Foundations of Education | 2 |
| Introductory Music Seminar | 0 | General Psychology | 3 |
| Aural Skills Foundations | 2 | Introduction to Winds | 1 |
| Basic Music Literature | 3 | Harmony 1 | 2 |
| Introduction to Music Technology | 2 | Primary Proficiency Lesson | 1 |
| Primary Proficiency Lesson | 1 | Keyboard Skills 1 ⁷ | (1) |
| Func Piano Skills (Sec Piano Prof) | | Sec Prof Lesson (Prim Piano only) | 1 |
| Sec Prof Lesson (Prim Piano only) | 1 | Performing Group | 0.5 |
| Performing Group | 0.5 | Repertoire | 0 |
| Repertoire | 0 | Old or New Testament Survey | 3 |
| Old or New Testament Survey | 3 | English Composition 2 | 3 |
| English Composition 1 | 3 | | 16.5 |
| | 18.5 | | |

Summer

| | |
|------------------------------|---|
| Knowing Brass ^{5,7} | 1 |
|------------------------------|---|

Year 2

| | | | |
|--|------|--|------|
| Developmental Psychology | 3 | Sophomore Fieldwork | 0 |
| Instrumental Methods Course ⁶ | 1 | Human Relations | 3 |
| Intermediate Aural Skills | 1 | The Exceptional Child | 3 |
| Harmony 2 | 2 | Harmony 3 | 2 |
| Primary Proficiency Lesson | 1 | Instrumental Methods Course ⁶ | 1 |
| Performing Group | 0.5 | Primary Proficiency Lesson | 1 |
| Keyboard Skills 2 ⁷ | (1) | Keyboard Skills 3 ⁷ | (1) |
| Repertoire | 0 | Secondary Proficiency Test | 0 |
| Christian Life and Leadership | 3 | Performing Group | 0.5 |
| Literature Elective | 3 | Repertoire | 0 |
| The Modern World | 3 | Baptist Heritage | 3 |
| | | Fundamentals of Public Speaking | 2 |
| Instrumental | 17.5 | Physical Science Elective | 3 |
| Choral | 16.5 | | |
| | | Instrumental | 18.5 |
| | | Choral | 17.5 |

Summer

| | | |
|-----------------------------------|------------------------|---|
| Know Early Child Music & Mvmt * 1 | Knowing Percussion* | 1 |
| Know Mid Child Music & Mvmt* 1 | Know Choral Pedagogy** | 1 |
| | Instrumental | 3 |
| | Choral | 4 |

Year 3

| | | | |
|-----------------------------------|------|------------------------------------|------|
| Upper Level Status | 0 | Junior Practicum | 0 |
| Middle Childhood Music & Movement | 2 | Instructional Media & Technology | 3 |
| Method Course ⁶ | 1 | Early Childhood Music & Movement 1 | 1 |
| Harmony 4 | 2 | Methods Course ⁶ | 1 |
| Music History Course | 2 | Counterpoint | 2 |
| Elementary Conducting | 2 | Music History course | 2 |
| Orchestration | 2 | Advanced Conducting | 2 |
| Form and Analysis | 2 | Junior Recital | 1 |
| Advanced Aural Skills | 1 | Performing Group | 0.5 |
| Primary Proficiency Lesson | 1 | Repertoire | 0 |
| Keyboard Skills 4 ⁷ | (1) | Bible Doctrine 1 or 2 | 3 |
| Performing Group | 0.5 | Math Elective | 3 |
| Repertoire | 0 | | 18.5 |
| Bible Doctrine 1 or 2 | 3 | | |
| | 18.5 | | |

Summer

| | | | |
|--|---|---|---|
| Knowing Woodwinds ^{5*} | 1 | Know Music Prgm Admin * | 1 |
| Know Instrmntl Classrm Mthds ^{3*} | 1 | Know Choral Classrm Mthds ^{4*} | 1 |
| | | | 4 |

Year 4

| | | | |
|---|------|---------------------------------------|------|
| Classroom Management | 2 | Educational Psychology | 3 |
| Instrumental Classroom Methods ³ | 1 | Education Seminar | 0 |
| Music Program Administration | 2 | Pre-ST Portfolio Review | 0 |
| Choral Methods Course ⁶ | 1 | Educational Assessment | 2 |
| Music History Course | 2 | Methods Course ⁶ | 1 |
| Primary Proficiency Lesson | 1 | Choral Classroom Methods ⁴ | 1 |
| Performing Group | 0.5 | Music History Course | 2 |
| Repertoire | 0 | Senior Recital | 1 |
| Bible Elective | 3 | Performing Group | 0.5 |
| Humanities Elective | 3 | Choral Methods Course ⁶ | 1 |
| Life Science Elective | 3 | Bible Electives | 3 |
| | 18.5 | American Studies Elective | 3 |
| | | Instrumental | 15.5 |
| | | Choral | 16.5 |

Year 5

| | |
|--|----|
| Supervised Student Teaching-License 12 | |
| Post-ST Portfolio Review | 0 |
| | 12 |

Concentration choices: • Choral Track License 1511
• Instrumental Track License 1506



Planning your schedule:

Music Education majors typically enroll in approximately 18 credits per semester. Several online music education courses are also available, allowing students to take classes during the summer—thereby saving as much as a full semester of residency. We are continually seeking to improve the efficiency of the course sequence in an effort to maximize student resources and program quality.

Music Education Minor

| Code | Course | Hours |
|--|--|-------|
| FIMP 100 | Introductory Music Seminar | 0 |
| FIMU 101 | Basic Music Literature | 3 |
| FIMK 101 | Keyboard Skills 1 (remedial, may be met by proficiency) | 1 |
| FIMU 111 | Aural Skills Foundations | 2 |
| FIMU 1125 | Intermediate Aural Skills | 1 |
| FIMU 114 | Harmony 1 | 2 |
| FIMU 115 | Harmony 2 | 2 |
| FIMU 151 | Introduction to Music Technology | 2 |
| FIPI 2001 | Functional Piano Skills (may be met by proficiency) | 1 |
| FIMP 246 | Repertoire Class (6 semesters) | 0 |
| FIMU 303 | Late Classical - Romantic Music | 2 |
| ELMU 208 | Knowing Early Childhood Music & Movement | 1 |
| ELMU 209 | Knowing Middle Childhood Music & Movement | 1 |
| ELMU 311 | Early Childhood Music & Movement | 1 |
| ELMU 315 | Middle Childhood Music & Movement | 2 |
| FIMU 347 | Elementary Conducting | 2 |
| Primary Proficiency Lessons (6 hours required) | | 6 |

1. This course must be taken at Maranatha and may not be taken as Directed Study.
2. This course must be taken at Maranatha.
3. Required for Instrumental Track
4. Required for Choral Track
5. Choral Track takes ELMU 231 or 241. Instrumental Track takes both.
6. See advisor for correct scheduling of fieldworks and methods classes.
7. See advisor for correct scheduling of fieldworks and methods classes.

* This course is offered only online in the summer session.

Minimum Hours Required 27-29

Music Education- Instrumental Track & Choral Track License Course Requirements

Code Course Hour

| Music Education-License Major (109 hours) | | |
|---|--|----|
| Teacher Education Core (39 hours) | | |
| HUPS 131 | General Psychology | 3 |
| HUSO 141 | Introduction to Sociology | 3 |
| EDUC 144 | Foundations of Education | 2 |
| EDUC 200 | Sophomore Fieldwork | 0 |
| EDUC 207 | Instructional Media & Technology | 3 |
| EDUC 225 | Human Relations 1 | 3 |
| HUPS 233 | Developmental Psychology | 3 |
| EDUC 236 | The Exceptional Child | 3 |
| EDUC 299 | Upper Level Status | 0 |
| EDUC 300 | Junior Practicum | 0 |
| EDUC 303 | Educational Psychology 2 | 3 |
| EDUC 336 | Classroom Management | 2 |
| EDUC 342 | Educational Assessment | 2 |
| EDUC 420 | Education Seminar | 0 |
| EDUC 422 | Pre-Student Teaching Portfolio Review | 0 |
| EDUC 443 | Supervised Student Teaching-License | 12 |
| EDUC 444 | Post-Student Teaching Portfolio Review | 0 |

| Music Teacher Education Core (19 hours) | | |
|---|-----------------------------------|---|
| ELMU 211 | Introduction to Winds | 1 |
| ELMU 311 | Early Childhood Music & Movement | 1 |
| ELMU 315 | Middle Childhood Music & Movement | 2 |
| SEMU 411 | Music Program Administration | 2 |
| SEMU 412 | Instrumental Classroom Methods 3 | 1 |
| SEMU 412 | Choral Classroom Methods 4 | 1 |

| Introductory Classes (7 hours) | | |
|--------------------------------|--|---|
| ELMU 208 | Knowing Early Childhood Music & Movement* | 1 |
| ELMU 209 | Knowing Middle Childhood Music & Movement* | 1 |
| ELMU 231 | Knowing Woodwinds*5 | 1 |
| ELMU 241 | Knowing Brass*5 | 1 |
| ELMU 251 | Knowing Percussion* | 1 |
| SEMU 360 | Knowing Instrumental Classroom Methods*3 | 1 |
| SEMU 380 | Knowing Choral Pedagogy*4 | 1 |
| SEMU 409 | Knowing Choral Classroom Methods*4 | 1 |
| SEMU 410 | Knowing Music Program Administration* | 1 |

| Methods Classes (Instrumental Track 5 hours, Choral Track 6 hours)6 | | |
|---|---|---|
| ELMU 232 | Woodwind Classroom Methods: Flute | 1 |
| ELMU 233 | Woodwind Classroom Methods: Single Reed | 1 |
| ELMU 242 | Brass Classroom Methods | 1 |
| ELMU 252 | Percussion Classroom Methods | 1 |
| ELMU 338 | String Methods | 1 |
| SEMU 333 | Vocal Teaching Techniques4 | 1 |
| SEMU 381 | Choral Pedagogy4 | 2 |

| Music Content Core (35 hours) | | |
|-------------------------------|---------------------------------------|---|
| FIMP 100 | Introductory Music Seminar | 0 |
| FIMU 101 | Basic Music Literature | 3 |
| FIMU 111 | Aural Skills Foundations | 2 |
| FIMU 1125 | Intermediate Aural Skills | 1 |
| FIMU 1126 | Advanced Aural Skills | 1 |
| FIMU 114 | Harmony 1 | 2 |
| FIMU 115 | Harmony 2 | 2 |
| FIMU 151 | Introduction to Music Technology | 2 |
| FIMU 216 | Harmony 3 | 2 |
| FIMU 217 | Harmony 4 | 2 |
| FIMP 246 | Repertoire (7 semesters) | 0 |
| FIMU 301 | Antiquity-Renaissance Music History | 2 |
| FIMU 302 | Baroque-Early Classical Music History | 2 |
| FIMU 303 | Late Classical-Romantic Music History | 2 |
| FIMU 304 | 20th Century Music History & Theory | 2 |
| FIMU 318 | Counterpoint | 2 |
| FIMU 319 | Form & Analysis | 2 |
| FIMU 347 | Elementary Conducting | 2 |
| FIMU 348 | Advanced Conducting | 2 |
| FIMU 403 | Orchestration | 2 |

| Music Proficiency Core (10 hours) | | |
|---|---|--|
| FIMP 246 | Repertoire (8 semesters) | |
| Primary Proficiency Lessons and Recital (8 semesters) | | |
| Secondary Proficiency Lessons/Classes (2+ until test is passed) | | |
| FIMK 101 | Keyboard Skills 1 remedial (All) | |
| FIMK 102 | Keyboard Skills 2 remedial (All) | |
| FIMK 103 | Keyboard Skills 3 remedial (Primary Piano Proficiencies only) | |
| FIMK 104 | Keyboard Skills 4 remedial (Primary Piano Proficiencies only) | |
| FIPI 2001 | Funct Piano Skills (Secondary Piano Proficiencies only) | |
| Music Performing Group Core (8 semesters, 4 hours) | | |

Course Distribution

| | |
|--|----------------|
| Music Education Major - Instrumental Track | 109 |
| Music Education Major - Choral Track | 110 |
| Biblical Studies Core | 24 |
| Liberal Arts Core | 29 |
| Minimum hours required | 162-163 |

Suggested Schedule

Year 1

| | | | |
|------------------------------|------|------------------------------|-------|
| Introduction to Sociology | 3 | Foundations of Education | 2 |
| Piano Pedagogy 1 | 2 | General Psychology | 3 |
| Introductory Music Seminar | 0 | Piano Pedagogy 2 | 2 |
| Basic Music Literature | 3 | Piano Freshman Fieldwork | 0.25 |
| Aural Skills Foundations | 2 | Harmony 1 | 2 |
| Primary Proficiency Lesson | 1 | Primary Proficiency Lesson | 1 |
| Secondary Proficiency Lesson | 1 | Secondary Proficiency Lesson | 1 |
| Performing Group | 0.5 | Secondary Proficiency Test | 0 |
| Repertoire | 0 | Keyboard Skills 1 (Remedial) | (1) |
| Old or New Testament Survey | 3 | Performing Group | 0.5 |
| English Composition 1 | 3 | Repertoire | 0 |
| | 18.5 | Freshman Platform | 0 |
| | | Old or New Testament Survey | 3 |
| | | English Composition 2 | 3 |
| | | | 17.75 |

Year 2

| | | | |
|--|-----|--|-------|
| Developmental Psychology | 3 | Sophomore Fieldwork | 0 |
| Piano Pedagogy 3 (if choosing this course) | 2 | Instructional Media and Technology | 3 |
| Sophomore Student Teaching 1 | 0.5 | The Exceptional Child | 3 |
| Intermediate Aural Skills | 1 | Keyboard Literature (if choosing this course)(2) | 2 |
| Harmony 2 | 2 | Sophomore Student Teaching 2 | 0.5 |
| Introduction to Music Technology | 2 | Early Childhood Movement and Music | 1 |
| Primary Proficiency Lesson | 1 | Hymnplaying 1 | 1 |
| Keyboard Skills 2 (Remedial) | (1) | Piano Sophomore Fieldwork | 0.25 |
| Performing Group | 0.5 | Harmony 3 | 2 |
| Repertoire | 0 | Primary Proficiency Lesson | 1 |
| Christian Life and Leadership | 3 | Keyboard Skills 3 (Remedial) | (1) |
| The Modern World | 3 | Performing Group | 0.5 |
| | 18 | Repertoire | 0 |
| | | Sophomore Platform | 0 |
| | | Baptist Heritage | 3 |
| | | Life or Physical Science | 3 |
| | | | 18.25 |

Summer

| | | | |
|-------------------------------------|---|--------------------|---|
| Know Early Chldhd Music & Movement* | 1 | Upper Level Status | 0 |
| Know Middle Chldhd Music & Mvmnt* | 1 | | 2 |

Year 3

| | | | |
|---------------------------------|-----|-----------------------------------|-----|
| Human Relations | 3 | Junior Practicum | 0 |
| Hymnplaying 2 | 1 | Classroom Management | 2 |
| Junior Student Teaching 1 | 0.5 | Introduction to Winds | 1 |
| Advanced Aural Skills | 1 | Junior Student Teaching 2 | 0.5 |
| Harmony 4 | 2 | Middle Childhood Music & Movement | 2 |
| Elementary Conducting | 2 | Form and Analysis | 2 |
| Music History Course | 2 | Advanced Conducting | 2 |
| Primary Proficiency Lesson | 1 | Music History Course | 2 |
| Keyboard Skills 4 (Remedial) | (1) | Counterpoint | 2 |
| Performing Group | 0.5 | Primary Proficiency Lesson | 1 |
| Repertoire | 0 | Performing Group | 0.5 |
| Bible Doctrine 1 or 2 | 3 | Repertoire | 0 |
| Fundamentals of Public Speaking | 2 | Bible Doctrine 1 or 2 | 3 |
| | 18 | | 18 |

Summer

| | | | |
|---------------------------|---|---------------|---|
| American Studies Elective | 3 | Math Elective | 3 |
| | | | 6 |

Year 4

| | | | |
|-----------------------------------|-----|--|-----|
| Educational Assessment | 2 | Education Seminar | 0 |
| Orchestration | 2 | Pre-Student Teaching Portfolio Review | 0 |
| Music History Course | 2 | Educational Psychology | 3 |
| Piano Pedagogy Practicum | 1 | Senior Student Teaching 2 | 0.5 |
| Senior Student Teaching 1 | 0.5 | Music History Course | 2 |
| Primary Proficiency Lesson | 1 | Primary Proficiency Lesson with Senior Recital | 1 |
| Performing Group | 0.5 | Performing Group | 0.5 |
| Repertoire | 0 | Repertoire | 0 |
| Bible Elective | 3 | Bible Elective | 3 |
| Life or Physical Science Elective | 3 | Humanities Elective | 3 |
| | 15 | Literature Elective | 3 |
| | | | 16 |

Year 5

| | |
|--|----|
| Supervised Student Teaching | 12 |
| Post-Student Teaching Portfolio Review | 0 |
| | 12 |

Music Education - Piano Pedagogy License Course Requirements

(Early and Middle Childhood)

Code Course Hours

| Code | Course | Hours |
|--|--|-------|
| Teacher Education Requirements (39 hours) | | |
| HUPS 131 | General Psychology | 3 |
| HUPS 141 | Introduction to Sociology | 3 |
| EDUC 144 | Foundations of Education | 2 |
| EDUC 200 | Sophomore Fieldwork | 0 |
| EDUC 207 | Instructional Media & Technology | 3 |
| EDUC 225 | Human Relations ¹ | 3 |
| HUPS 233 | Developmental Psychology | 3 |
| EDUC 236 | The Exceptional Child | 3 |
| EDUC 299 | Upper Level Status | 0 |
| EDUC 300 | Junior Practicum | 0 |
| EDUC 303 | Educational Psychology ² | 3 |
| EDUC 336 | Classroom Management | 2 |
| EDUC 342 | Educational Assessment | 2 |
| EDUC 420 | Education Seminar | 0 |
| EDUC 422 | Pre-Student Teaching Portfolio Review | 0 |
| EDUC 443 | Supervised Student Teaching-License | 12 |
| EDUC 444 | Post-Student Teaching Portfolio Review | 0 |

Music Teacher Education Core (18.5 hours)

| | | |
|----------|--|---|
| ELMU 208 | Know Early Childhood Music & Movement | 1 |
| ELMU 209 | Know Middle Childhood Music & Movement | 1 |
| ELMU 211 | Introduction to Winds | 1 |
| ELMU 311 | Early Childhood and Movement | 1 |
| ELMU 315 | Middle Childhood and Movement | 2 |

Piano Pedagogy Requirements

| | | |
|----------|------------------------------|------|
| FIPD 100 | Freshman Fieldwork | 0.25 |
| FIPD 111 | Piano Pedagogy 1 | 2 |
| FIPD 200 | Sophomore Fieldwork | 0.25 |
| FIPD 201 | Sophomore Student Teaching 1 | 0.5 |
| FIPD 202 | Sophomore Student Teaching 2 | 0.5 |
| FIPD 211 | Piano Pedagogy 2 | 2 |

Choose either FIPD 221 or FIPD 350 (2 hours)

| | | |
|----------|---------------------------|-----|
| FIPD 221 | Keyboard Literature | |
| FIPD 350 | Piano Pedagogy 3 | |
| FIPD 301 | Junior Student Teaching 1 | 0.5 |
| FIPD 302 | Junior Student Teaching 2 | 0.5 |
| FIPD 401 | Senior Student Teaching 1 | 0.5 |
| FIPD 402 | Senior Student Teaching 2 | 0.5 |
| FIPD 411 | Piano Pedagogy Practicum | 1 |

Choose either FISM 230 or FISM 113 & 223 (2 hours)

| | | |
|----------|----------------------|---|
| FISM 113 | Hymnplaying 1 | 1 |
| FISM 223 | Hymnplaying 2 | 1 |
| FISM 230 | Hymnplaying Pedagogy | 2 |

Music Content Requirements (35 hours)

| | | |
|-----------|---------------------------------------|---|
| FIMP 100 | Introductory Music Seminar | 0 |
| FIMU 101 | Basic Music Literature | 3 |
| FIMU 111 | Aural Skills Foundations | 2 |
| FIMU 1125 | Intermediate Aural Skills | 1 |
| FIMU 1126 | Advanced Aural Skills | 1 |
| FIMU 114 | Harmony 1 | 2 |
| FIMU 115 | Harmony 2 | 2 |
| FIMU 151 | Introduction to Music Technology | 1 |
| FIMU 216 | Harmony 3 | 2 |
| FIMU 217 | Harmony 4 | 2 |
| FIMU 301 | Antiquity - Renaissance Music History | 2 |
| FIMU 302 | Baroque-Early Classical Music History | 2 |
| FIMU 303 | Late Classical-Romantic Music History | 2 |
| FIMU 304 | 20th Century Music History & Theory | 2 |
| FIMU 318 | Counterpoint | 2 |
| FIMU 319 | Form and Analysis | 2 |
| FIMU 347 | Elementary Conducting | 2 |
| FIMU 348 | Advanced Conducting | 2 |
| FIMU 403 | Orchestration | 2 |

Piano and Applied Music Requirements

| | | |
|--------------|---|-------|
| FISM 101-104 | Keyboard Skills 1-4 (remedial as needed) | (0-4) |
| FIPD 113 | Hymnplaying 1 | 1 |
| FIPD 223 | Hymnplaying 2 | 1 |
| FIMP 246 | Repertoire (7 semesters) | 0 |
| FIPN | Primary Proficiency Lessons & Senior Recital | 8 |
| | Secondary Instrument Private Lessons or Class | 2 |
| FIMU 299 | Secondary Proficiency Test | 0 |
| | (continue lessons until secondary test is passed) | |
| | Group Participation (4 hours, 8 semesters) | 4 |

Course Distribution

| | |
|-------------------------------|--------------|
| Teacher Education | 38 |
| Music Education | 18.5 |
| Music Content | 35 |
| Piano and Applied Music | 14 |
| Biblical Studies Core | 24 |
| Liberal Arts Core | 29 |
| Minimum hours required | 159.5 |

1. This course must be taken at Maranatha and may not be taken as Directed Study.

2. This course must be taken at Maranatha.

*This course is offered only online in the summer session.

Coaching

License 1540
EC-A License levels

A good team needs a good coach—and Maranatha is committed to training men and women to be effective coaches who know how to minister through athletics. The Coaching minor does not focus only on how to have a winning season, but on training athletes to model character traits such as faithfulness, commitment, and perseverance. Dedicated athletic instructors challenge athletes to excel in sports as well as godliness.

Students who minor in coaching learn how to teach basic skill development in at least three sports of their choice (baseball, basketball, football, softball, soccer, volleyball, or wrestling). They also gain an understanding of team organization, anatomy and physiology, coaching techniques, conditioning procedures, and first aid and safety.



Major Minor Concentration

Intercollegiate Sports at Maranatha

Men's Sports:

- Baseball
- Football
- Basketball
- Soccer
- Wrestling
- Cross-country

Women's Sports:

- Volleyball
- Cross-country
- Basketball
- Soccer
- Softball

Coaching Minor Course Requirements

| Code | Course | Hours |
|---|--|-------|
| ASSC 226 | Anatomy & Physiology 1 | 4 |
| ASSC 227 | Anatomy & Physiology 2 | 4 |
| SECO 235 | Methods of Coaching | 2 |
| SECO 236 | Foundations of Sport and Exercise Psychology | 2 |
| SEPE 241 | First Aid & Safety | 2 |
| SEPE 331 | Physiology of Exercise | 3 |
| SECO 334 | Training Room Techniques | 3 |
| SEPE 337 | Kinesiology | 3 |
| SECO 338 | Organization & Admin. of Athletics & P.E. | 3 |
| SECO 439 | Athletic Coaching Fieldwork | 1 |
| Techniques of Coaching (Choose 4 credits) | | 4 |

Minimum Hours Required 31

For the Concentration, take SECO 235, SECO 236, SEPE 241, and SECO 334, 4 hours of the Techniques of Coaching classes, and 2 hours of one of the Electives for a total of 15 hours.

See page 80 for Education Minor.

Physical Education & Health

Many Americans fail to recognize that the human body is created for God's glory (1 Cor 6:20). With a rise in obesity and other effects of sedentary lifestyles—not to mention America's increasingly man-centered view of sports—kids need Christ-centered teaching on the role of sports and physical activity in the Christian life. You can shape the next generation by teaching personal health and individual and team sports from a biblical worldview.

Maranatha's Physical Education & Health major will prepare you to teach physical education and coach athletic teams in both Christian and public schools.

You'll also have the opportunity to join any of Maranatha's sports teams—cross-country, football, soccer (men's and women's), volleyball, wrestling, basketball (men's and women's), baseball, and softball. Maranatha athletic teams are part of the NCAA Division III and the NCCAA Division II.

Major Minor Track

Career Options

- Coach for school or church
- Physical Education teacher
- Athletic department director

Suggested Schedule

Year 1

| | | | |
|-----------------------------|----|---|----|
| Introduction to Sociology | 3 | Foundations of Education | 2 |
| Personal & Community Health | 2 | Intro. to Physical Education and Health | 2 |
| Old or New Testament Survey | 3 | Consumerism in Health | 2 |
| English Composition 1 | 3 | Old or New Testament Survey | 3 |
| The Modern World | 3 | English Composition 2 | 3 |
| Math Elective | 3 | Physical Science Elective | 3 |
| | 17 | General Psychology | 3 |
| | | | 18 |

Summer

| | | | |
|---------------------------------|---|---------------------|---|
| Fundamentals of Public Speaking | 2 | Literature Elective | 3 |
| | | | 5 |

Year 2

| | | | |
|----------------------------------|----|--|----|
| Developmental Psychology | 3 | The Exceptional Child | 3 |
| Anatomy & Physiology 1 | 4 | Sophomore Fieldwork | 0 |
| Motor Learning | 2 | Anatomy & Physiology 2 | 4 |
| Techniques of Coaching Elective | 2 | Foundations of Sport & Exercise Psychology | 2 |
| Teaching Techniques | 1 | Techniques of Coaching Elective | 2 |
| Drugs, Society, & Human Behavior | 2 | Instructional Media & Technology | 3 |
| Christian Life and Leadership | 3 | Baptist Heritage | 3 |
| | 17 | | 17 |

Summer

| | | | |
|---------------------------|---|----------------|---|
| Upper Level Status | 0 | Music Elective | 2 |
| American Studies Elective | 3 | | 5 |

Year 3

| | | | |
|-----------------------------------|----|--|----|
| Org. & Admin. of Athletics & P.E. | 3 | Junior Practicum | 0 |
| Methods of Coaching | 2 | Adaptive Physical Education | 3 |
| Physiology of Exercise | 3 | Evaluations in Physical Education | 2 |
| First Aid & Safety | 2 | Strength, Conditioning, & Flexibility | 2 |
| Training Room Techniques | 3 | Kinesiology | 3 |
| Teaching Techniques | 2 | Elementary Physical Education & Health | 2 |
| Bible Doctrine 1 or 2 | 3 | Secondary School Reading | 3 |
| | 18 | Bible Doctrine 1 or 2 | 3 |
| | | | 18 |

Summer

| | | | |
|---------------------|---|----------------|---|
| Teaching Techniques | 2 | Bible Elective | 3 |
| | | | 5 |

Year 4

| | | | |
|--|----|-------------------------------------|----|
| Education Seminar | 0 | Supervised Student Teaching-License | 12 |
| Pre-ST Portfolio Review | 0 | Post-ST Portfolio Review | 0 |
| Classroom Management | 2 | | 12 |
| Methods of Teaching Physical Education | 3 | | |
| Human Relations | 3 | | |
| Educational Psychology | 3 | | |
| School Health Programs | 2 | | |
| Nutrition | 2 | | |
| Bible Elective | 3 | | |
| | 18 | | |

License 1530 & 1910 EC-A License levels



Faculty member Gary Garrison understands the significance of his Physical Education and Health classes at Maranatha. He says, "Physical education is the only subject which, by the very nature of its content, has the potential to affect how a person will feel every moment of every day for the rest of his or her life."

Physical Education and Health License Course Requirements

| Code | Course | Hours |
|--|---|-------|
| Physical Education and Health Requirements (98 hours) | | |
| HUSO 141 | Introduction to Sociology | 3 |
| EDUC 144 | Foundations of Education | 2 |
| EDUC 200 | Sophomore Fieldwork | 0 |
| EDUC 207 | Instructional Media & Technology | 3 |
| EDUC 225 | Human Relations ¹ | 3 |
| SEED 230 | Secondary School Reading | 3 |
| HUPS 233 | Developmental Psychology | 3 |
| EDUC 236 | The Exceptional Child | 3 |
| EDUC 299 | Upper Level Status | 0 |
| EDUC 300 | Junior Practicum | 0 |
| EDUC 303 | Educational Psychology ² | 3 |
| EDUC 336 | Classroom Management | 2 |
| SEED 355 | Methods of Teaching Physical Education ¹ | 3 |
| EDUC 420 | Education Seminar | 0 |
| EDUC 422 | Pre-Student Teaching Portfolio Review | 0 |
| EDUC 443 | Supervised Student Teaching-License | 12 |
| EDUC 444 | Post-Student Teaching Portfolio Review | 0 |

| | | |
|--|---|---|
| Physical Education and Health Requirements (58 hours) | | |
| SEHE 103 | Personal & Community Health | 2 |
| SEPE 135 | Intro. to Physical Education and Health | 2 |
| SEHE 201 | Nutrition | 2 |
| SEHE 202 | Drugs, Society, & Human Behavior | 2 |
| SEHE 203 | Consumerism in Health | 2 |
| SEPE 238 | Motor Learning | 2 |
| ELED 248 | Elementary Physical Education & Health | 2 |
| SEHE 323 | School Health Programs | 2 |
| SECO 338 | Organization & Administration of Athletics & P.E. | 3 |
| SEPE 338 | Evaluations in Physical Education | 2 |
| SEPE 340 | Adaptive Physical Education | 3 |
| Teaching Techniques | | |
| SEPE 227 | Outdoor Activities in Phys.Ed. | 1 |
| SEPE 228 | Basic Swimming | 0 |
| SEPE 230 | Team Sports | 2 |
| SEPE 235 | Individual, Dual, & Lifetime Sports | 2 |
| SEPE 236 | Strength, Conditioning, & Flexibility | 2 |

| | | |
|-----------------------|--|---|
| Coaching Minor | | |
| ASSC 226 | Anatomy & Physiology 1 | 4 |
| ASSC 227 | Anatomy & Physiology 2 | 4 |
| SECO 235 | Methods of Coaching | 2 |
| SECO 236 | Foundations of Sport & Exercise Psychology | 2 |
| SEPE 241 | First Aid & Safety | 2 |
| SEPE 331 | Physiology of Exercise | 3 |
| SECO 334 | Training Room Techniques | 3 |
| SEPE 337 | Kinesiology | 3 |

Participation Requirements (4 seasons)
three seasons of team membership and one of team management

| | | |
|---|------------|---|
| Techniques of Coaching (4 hours) | | |
| SECO 429 | Volleyball | 2 |
| SECO 430 | Baseball | 2 |
| SECO 431 | Softball | 2 |
| SECO 435 | Basketball | 2 |
| SECO 436 | Football | 2 |
| SECO 437 | Soccer | 2 |
| SECO 438 | Wrestling | 2 |

1. This course must be taken at Maranatha and may not be taken as Directed Study.
2. This course must be taken at Maranatha.

| | | |
|---|--|------------|
| Course Distribution | | |
| Physical Education & Health Major - Certification | | 98 |
| Biblical Studies Core | | 24 |
| Liberal Arts Core | | 28 |
| Minimum hours required | | 150 |

Science Education (Broadfield)

Children are naturally curious. They love to discover new things, explore the world around them, and work with their hands. If you love the thought of stimulating inquisitive minds to investigate the world through biology, chemistry, physics, and other fields of science—and to do so from a biblical frame of reference—the Science Education major may be for you. At Maranatha, you'll gain a solid foundation in biological, physical, and earth sciences as well as preparation in the art of teaching and passing this knowledge on to others. You'll also benefit from experienced professors who are not afraid to follow the scientific evidence when it points to a Creator or supports biblical creationism.

The major will lead to a Bachelor of Science degree and prepare you to teach early adolescents through adolescents. Students may take the standard program or meet license requirements of the Wisconsin Department of Public Instruction, including a full semester of student teaching.

Major Minor Track

Career Options

- Science teacher
- Scientist
- Biologist
- Chemist

Suggested Schedule

for Earth Science Concentration

Year 1

| | | | |
|---------------------------------|----|-----------------------------|----|
| Introduction to Sociology | 3 | Foundations of Education | 2 |
| General Biology 1 | 4 | General Biology 2 | 4 |
| Old or New Testament Survey | 3 | Old or New Testament Survey | 3 |
| English Composition 1 | 3 | English Composition 2 | 3 |
| Music Elective | 2 | The Modern World | 3 |
| Fundamentals of Public Speaking | 2 | General Psychology | 3 |
| | 17 | | 18 |

Year 2

| | | | |
|---------------------------|----|-------------------------------|----|
| Sophomore Fieldwork | 0 | Developmental Psychology | 3 |
| Physics 1 or Biology 1 | 4 | Physics 2 or Biology 2 | 4 |
| Earth Science Elective | 3 | Earth Science Elective | 3 |
| Baptist Heritage | 3 | Christian Life and Leadership | 3 |
| Calculus 1 | 5 | American Studies Elective | 3 |
| American Studies Elective | 3 | | 16 |
| | 18 | | |

Year 3

| | | | |
|----------------------------------|----|---------------------------------------|----|
| Upper Level Status | 0 | Junior Practicum | 0 |
| Instructional Media & Technology | 3 | Sec. & Middle School Teaching Methods | 2 |
| Physics 1 or Biology 1 | 4 | Human Relations | 3 |
| Earth Science Elective | 3 | Physics 2 or Biology 2 | 4 |
| Biology Elective | 4 | Biology Elective | 4 |
| Bible Elective | 3 | Bible Elective | 3 |
| | 17 | | 16 |

Year 4

| | | | |
|------------------------|----|-----------------------------------|----|
| Educational Psychology | 3 | Education Seminar | 0 |
| Teaching Science | 3 | Pre-ST Portfolio Review | 0 |
| Educational Assessment | 2 | Secondary School Reading | 3 |
| Classroom Management | 2 | Ecology | 3 |
| Biology Elective | 3 | Laboratory & Field Investigations | 2 |
| Earth Science Elective | 2 | The Exceptional Child | 3 |
| Bible Doctrine 1 or 2 | 3 | Earth Science Elective | 3 |
| | 18 | Bible Doctrine 1 or 2 | 3 |
| | | | 17 |

Year 5

| | |
|-------------------------------------|----|
| Supervised Student Teaching-License | 12 |
| Post-ST Portfolio Review | 0 |
| | 12 |

License 1601 & 1605 EA-A License levels



Science Education Major License Course Requirements

| Code | Course | Hours |
|--|--|-------|
| Science Education Requirements (98 hours) | | |
| HUSO 141 | Introduction to Sociology | 3 |
| EDUC 144 | Foundations of Education | 2 |
| EDUC 200 | Sophomore Fieldwork | 0 |
| EDUC 207 | Instructional Media & Technology | 3 |
| EDUC 225 | Human Relations ¹ | 3 |
| SEED 230 | Secondary School Reading | 3 |
| HUPS 233 | Developmental Psychology | 3 |
| EDUC 236 | The Exceptional Child | 3 |
| SEED 241 | Sec. & Middle School Teaching Methods | 2 |
| EDUC 299 | Upper Level Status | 0 |
| EDUC 300 | Junior Practicum | 0 |
| EDUC 303 | Educational Psychology ² | 3 |
| EDUC 336 | Classroom Management | 2 |
| EDUC 342 | Educational Assessment | 2 |
| SEED 356 | Teaching Science ¹ | 3 |
| EDUC 420 | Education Seminar | 0 |
| EDUC 422 | Pre-Student Teaching Portfolio Review | 0 |
| EDUC 443 | Supervised Student Teaching-License | 12 |
| EDUC 444 | Post-Student Teaching Portfolio Review | 0 |

As a science education major, you must specialize in either *earth science or + chemistry.

Science Requirements (* 20 hours or + 28 hours)

| | | |
|----------|----------------------------------|---|
| ASSC 120 | General Biology 1 | 4 |
| ASSC 141 | General Chemistry 1 | 4 |
| ASSC 142 | General Chemistry 2 | 4 |
| ASSC 151 | General Physics 1 | 4 |
| ASSC 152 | General Physics 2 | 4 |
| ASSC 338 | Organic Chemistry 1 ⁺ | 4 |
| ASSC 340 | Biochemistry ⁺ | 4 |

Biology Minor Requirement (9 hours)

| | | |
|----------|-----------------------------------|---|
| ASSC 121 | General Biology 2 | 4 |
| ASSC 330 | Ecology | 3 |
| ASSC 433 | Laboratory & Field Investigations | 2 |

Biology Electives (11 hours*, 9 hours⁺)

| | | |
|----------|-----------------------------|---|
| ASSC 213 | Field Botany | 3 |
| ASSC 226 | Anatomy and Physiology 1 | 4 |
| ASSC 227 | Anatomy and Physiology 2 | 4 |
| ASSC 232 | Invertebrate Zoology | 4 |
| ASSC 233 | Vertebrate Zoology | 4 |
| ASSC 234 | Microbiology | 4 |
| ASSC 325 | Genetics | 3 |
| ASSC 339 | Organic Chemistry 2 | 4 |
| ASSC 420 | Molecular Genetics Research | 3 |
| ASSC 436 | Cell & Molecular Biology 1 | 3 |
| ASSC 437 | Cell & Molecular Biology 2 | 3 |

Earth Science Electives (14 hours*, 8 hours⁺)

| | | |
|----------|---|---|
| ASSC 235 | Geology | 3 |
| ASSC 239 | Meteorology | 3 |
| ASSC 242 | Astronomy | 3 |
| ASSC 275 | Topics in Geophysics, Geology & Origins | 2 |
| ASSC 441 | Advanced Physical Geography & Climate | 3 |

1. This course must be taken at Maranatha and may not be taken as Directed Study.

2. This course must be taken at Maranatha.

Course Distribution

| | |
|--|------------|
| Science Ed. Major-Earth Science or Chemistry Track - License | 98 |
| Biblical Studies Core | 24 |
| Liberal Arts Core | 27 |
| Minimum hours required | 149 |

Did You Know?

Nearly 27 percent of Maranatha students in the spring of 2012 were pursuing degrees within Teacher Education, the most of any academic department.

Social Studies Education (Broadfield)

The United States depends on civic-minded and informed citizens to sustain its ideals, yet 53 percent of 12th graders leave high school with “below basic” knowledge of U.S. history, while only 27 percent are considered proficient in civics.* Maranatha offers a well-rounded major to help reverse the trend and teach through a biblical lens. As a Social Studies Education major, you will receive a rigorous foundation in U.S. history and world history, as well as courses in psychology, economics, sociology, geography, and political science. You’ll learn critical thinking skills and responsibility as an informed American citizen—all from a biblical perspective.

To ensure a strong understanding of social studies, you’ll take concentrations in two of the five social studies disciplines, as well as at least two courses in each of the remaining three disciplines. (The typical Maranatha Social Studies Education major has three concentrations—history, political science, and psychology.) The Social Studies Education program, which typically takes longer than four years to complete, is designed to meet the license requirements of the Wisconsin Department of Public Instruction.

Major Minor Track

Career Options

- Social studies teacher
- Cartographer
- Market researcher
- Archivist
- Researcher
- Governmental relations
- Lobbyist
- Federal service worker

Suggested Schedule

for Psychology/Political Science Concentrations

| Year 1 | | | |
|-----------------------------|----|---------------------------------|----|
| The Modern World | 3 | Foundations of Education | 2 |
| Introduction to Geography | 3 | General Psychology | 3 |
| Introduction to Sociology | 3 | New or Old Testament Survey | 3 |
| Old or New Testament Survey | 3 | English Composition 2 | 3 |
| English Composition 1 | 3 | Fundamentals of Public Speaking | 2 |
| Music Elective | 2 | Math Elective | 3 |
| | 17 | | 16 |

| Summer | | | |
|-------------------------|---|--------------------------|---|
| United States History 1 | 3 | Developmental Psychology | 3 |
| | | | 6 |

| Year 2 | | | |
|----------------------------------|----|---------------------------|----|
| Instructional Media & Technology | 3 | Secondary School Reading | 3 |
| Sec. & Mdl Sch. Teaching Mthds. | 2 | Sophomore Fieldwork | 0 |
| Human Relations | 3 | United States History 2 | 3 |
| Ancient Civilizations | 3 | Choose HUI 250 or HUI 335 | 3 |
| Early American Political Thought | 3 | History Elective | 3 |
| Christian Life and Leadership | 3 | Baptist Heritage | 3 |
| | 17 | Literature Elective | 3 |
| | | | 18 |

| Year 3 | | | |
|-----------------------|----|------------------------------------|----|
| Upper Level Status | 0 | Teaching Social Studies | 3 |
| 20th Century History | 3 | Junior Practicum | 0 |
| National Government | 3 | American Constitutional History | 3 |
| The Exceptional Child | 3 | State and Local Government | 3 |
| Macroeconomics | 3 | Microeconomics | 3 |
| Bible Doctrine 1 or 2 | 3 | Introduction to Physical Geography | 3 |
| Life Science Elective | 3 | Bible Doctrine 1 or 2 | 3 |
| | 18 | | 18 |

| Summer | | | |
|------------------|---|----------------|---|
| History Elective | 3 | Bible Elective | 3 |
| | | | 6 |

| Year 4 | | | |
|--------------------------------|----|-------------------------------------|----|
| Education Seminar | 0 | Supervised Student Teaching-License | 12 |
| Pre-ST Portfolio Review | 0 | Post-ST Portfolio Review | 0 |
| Educational Assessment | 2 | | 12 |
| Classroom Management | 2 | | |
| Historical Method & Philosophy | 3 | | |
| History Elective | 3 | | |
| Educational Psychology | 3 | | |
| Sociology Elective | 2 | | |
| Bible Elective | 3 | | |
| | 18 | | |

Licenses 1701, 1725 (History) EA-A License levels

Concentration choices:

- Political Science - License 1735
- Economics - License 1710
- Geography - License 1715
- Psychology - License 1740



Social Studies Education Major License Course Requirements

| Code | Course | Hours |
|--|--|-------|
| Social Studies Education Requirements (103 hours) | | |
| EDUC 144 | Foundations of Education | 2 |
| EDUC 200 | Sophomore Fieldwork | 0 |
| EDUC 207 | Instructional Media & Technology | 3 |
| EDUC 225 | Human Relations ¹ | 3 |
| SEED 230 | Secondary School Reading | 3 |
| SEED 241 | Sec. & Middle School Teaching Methods | 2 |
| EDUC 299 | Upper Level Status | 0 |
| EDUC 300 | Junior Practicum | 0 |
| EDUC 336 | Classroom Management | 2 |
| EDUC 342 | Educational Assessment | 2 |
| SEED 353 | Teaching Social Studies ¹ | 3 |
| EDUC 420 | Education Seminar | 0 |
| EDUC 422 | Pre-Student Teaching Portfolio Review | 0 |
| EDUC 443 | Supervised Student Teaching-License | 12 |
| EDUC 444 | Post-Student Teaching Portfolio Review | 0 |
| History Requirements (30 hours) | | |
| HUHI 130 | The Modern World | 3 |
| HUHI 220 | Ancient Civilizations | 3 |
| HUHI 231 | United States History 1 | 3 |
| HUHI 232 | United States History 2 | 3 |
| HUHI 245 | 20th Century History | 3 |
| HUHI 497 | Historical Method & Philosophy | 3 |
| <i>Choose one:</i> | | |
| HUHI 250 | Modern East Asian History | 3 |
| HUHI 335 | Native American History | 3 |
| History Electives (9 hours) | | |
| HUHI 233 | History of England | 3 |
| HUHI 237 | Renaissance & Reformation | 3 |
| HUHI 330 | Civil War & Reconstruction | 3 |
| HUHI 347 | Recent & Contemporary America | 3 |
| HUHI 352 | Modern European History | 3 |
| Social Studies Requirements (41 hours) | | |
| Psychology Concentration (12 hours) | | |
| HUPS 131 | General Psychology | 3 |
| HUPS 233 | Developmental Psychology | 3 |
| EDUC 303 | Educational Psychology ² | 3 |
| EDUC 236 | The Exceptional Child | 3 |
| Economics Concentration (6 hours) | | |
| BUMG 222 | Macroeconomics | 3 |
| BUMG 223 | Microeconomics | 3 |
| Geography Concentration (6 hours) | | |
| HUSO 134 | Introduction to Geography | 3 |
| ASSC 135 | Introduction to Physical Geography | 3 |
| Political Science Concentration (12 hours) | | |
| HUSO 233 | National Government | 3 |
| HUSO 234 | State and Local Government | 3 |
| HUHI 230 | Early American Political Thought | 3 |
| HUHI 354 | American Constitutional History | 3 |
| Sociology Courses (5 hours) | | |
| HUSO 141 | Introduction to Sociology | 3 |
| <i>Choose one of the following courses:</i> | | |
| HUCC 226 | Comparative Religions | 2 |
| HUCC 412 | Cultural Anthropology & Communication | 3 |

1. This course must be taken at Maranatha and may not be taken as Directed Study.
2. This course must be taken at Maranatha.

Course Distribution

| | |
|---|------------|
| Social Studies Education Major - License (Psychology and Political Science Concentrations) | 103 |
| Biblical Studies Core | 24 |
| Liberal Arts Core | 19 |
| Minimum hours required | 146 |



What's that class about?

See the course descriptions on pages 158-179

Early Childhood Education Associates Degree

The Early Childhood degree will prepare you to work in daycare, after-school programs, and preschools. You'll gain great teaching ideas ranging from curriculum and methods in art to physical activities for the preschool child, as well as hands-on fieldwork experience. You'll also benefit from completing two years of coursework in Bible, science, math, American studies, and other core subjects. And if you ever choose to pursue more college training, your associate's degree can be rolled into a four-year elementary education or early childhood education degree.



Two Year Program Minor Track

Career Options 2-Year Degree

- Child care facility director or worker
- Preschool teacher
- After-school program activity director

Early Childhood Concentration

| Code | Course | Hours |
|---|---------------------------------------|-----------|
| ELEC 221 | Child Care and Development | 2 |
| ELEC 231 | Program & Curric. for Preschool Child | 3 |
| ELEC 261 | Language Acquisition | 3 |
| ELEC 271 | Parent Education & Involvement | 2 |
| Elective from courses listed in minor above | | 2 |
| Minimum hours required | | 12 |

Early Childhood Two Year Degree

| Code | Course | Hours |
|----------|--|-------|
| ELEC 191 | Early Childhood Fieldwork 1 | 1 |
| ELEC 221 | Child Care and Development | 2 |
| ELED 230 | Children's Literature | 3 |
| ELEC 231 | Program & Curric. for the Preschool Child | 3 |
| ELEC 236 | Phys. Activities for the Preschool Child | 2 |
| EDUC 236 | The Exceptional Child | 3 |
| ELED 253 | Curriculum and Methods in Art | 1 |
| ELED 254 | Curriculum and Methods in Music | 1 |
| ELEC 261 | Language Acquisition | 3 |
| ELEC 271 | Parent Education & Involvement | 2 |
| ELEC 281 | Screening, Diagnosis, & Prescription | 2 |
| ELEC 291 | Administration of Early Childhood Programs | 3 |
| ELEC 292 | Early Childhood Fieldwork 2 | 1 |
| ELEC 293 | Early Childhood Fieldwork 3 | 1 |

Course Distribution

| | |
|---|-----------|
| Early Childhood Education | 28 |
| Biblical Studies Core (in Suggested Schedule) | 13 |
| General Studies Core (in Suggested Schedule) | 23 |
| Minimum hours required | 64 |

Two Year Degree Suggested Schedule

| Year 1 | | | |
|---------------------------------------|-----------|--|-----------|
| Child Care & Development | 2 | Early Childhood Fieldwork 1 | 1 |
| Program & Curric. for Preschool Child | 3 | Physical Activities for Preschool Child | 2 |
| Parent Education & Involvement | 2 | Old or New Testament Survey | 2 |
| Christian Life 1 | 1 | English Composition 2 | 3 |
| Old or New Testament Survey | 2 | The Modern World | 3 |
| English Composition 1 | 3 | Fundamentals of Public Speaking | 2 |
| Math for the Elementary Teacher | 3 | Biology, Ecology, and Environmental Science for the Elementary Teacher | 4 |
| | 16 | | 17 |

| Year 2 | | | |
|-------------------------------|-----------|--------------------------------------|-----------|
| Early Childhood Fieldwork 2 | 1 | Early Childhood Fieldwork 3 | 1 |
| Children's Literature | 3 | Language Acquisition | 3 |
| Curriculum & Methods in Art | 1 | Screening, Diagnosis, & Prescription | 2 |
| Curriculum & Methods in Music | 1 | Admin. of Early Childhood Programs | 3 |
| Principles of Bible Study | 2 | The Exceptional Child | 3 |
| Baptist Heritage | 3 | Bible Doctrine 1 or 2 | 3 |
| United States History 1 | 3 | | |
| Music Elective | 2 | | |
| | 16 | | 15 |

Watertown

enjoy small town life



Watertown offers comfortable small-town character and charm within a convenient driving distance of the big city. Take a walk along the scenic Rock River, enjoy parks and recreational areas, and browse vendors' booths at the farmers' market. When you get hungry, grill out the best locally made brats you've ever tasted!