



TRENTINO
2013
WINTER
UNIVERSIADE

ITALY



SPORT MANUAL

CURLING



A BIG THANK YOU



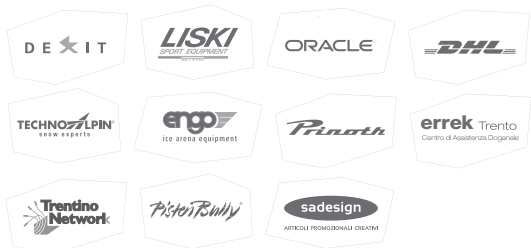
PREMIUM PARTNER



OFFICIAL PARTNER



TECHNICAL SUPPLIER



OFFICIAL BROADCASTER





FORWARDS & INTRODUCTION

Welcome!

Dear Athletes and Officials of the 26th Winter Universiade, The Winter Universiade Organising Committee Trentino 2013 is honoured and has great pride in welcoming elite University athletes to the Trentino 2013 Winter Universiade.

We are confident that the efforts made by the Organising Committee in all fields, although in a quite short preparation time frame, will provide you the best infrastructures, the most adequate competition venues and conditions to enhance your performances and enable you to enjoy the most comfortable and pleasant stay in our beautiful and historically, culturally rich region surrounded by the wonderful UNESCO heritage Dolomites mountains.

We are well aware that your performances will represent an important stage in your life and motivate you to consider any kind of result an important milestone also in consideration of your future professional activities.

We have prepared this summary booklet with the intention to provide you specifically with all necessary and more detailed and useful information, in order to facilitate the approach to the competition venue, to remind the most important dates and deadlines and to give you practical assistance on the field of play.

We look forward to your participation and hope you will find the our manual helpful.

Best wishes,



President
Sergio Anesi



Secretary General
Filippo Bazzanella



Sport & Venues Managing Director
Ubaldo Prucker

SPORT TECHNICAL MANUAL

CURLING

Baselga di Pinè

International University Sport Federation



The FISU (International University Sport Federation) is responsible for the organisation and governance of worldwide competitions for student-athletes between the ages of 17 and 28. It was founded in 1949 as the world governing body of national university sports organisations and currently has 167 member associations from 5 continental regions.

The Winter Universiade is an international sporting and cultural festival which is staged every two years in a different city.

For the 2013 the FISU Executive Committee has appointed Trentino.

Each organising committee has to fulfill FISU regulations. Due to the particular situation of Trentino 2013 Winter Universiade, the Regulations differ from the ones of the previous editions.

The 26th Winter Universiade was attributed to Trentino in 2012 after the cancellation of the Winter Universiade in Maribor (Slovenia). For this reason, FISU and the Organising Committee have agreed on particular conditions.

Although it is organised under special circumstances, this exceptional Winter Universiade promised FISU and all university students to be held without any interruption in Trentino, an outstanding Alpine Region with a high standard of education, life, sport, culture and modern infrastructure.





Table of contents

1. INTERNATIONAL AND NATIONAL SPORT FEDERATIONS

2. FISU SPORT TECHNICAL COMMITTEE

3. CURLING VENUE

3.1 Introduction to the Venue

3.2 Transport Service

3.3 Distances from Venues

4. GENERAL RULES

4.1 Curling - FISU Technical Regulations

4.2 Insurance

4.3 Protests

4.4 Medical care

5. COMPETITION MANAGEMENT

5.1 Curling Structural Chart

5.2 Competition Format

5.3 Final Entries - Deadlines

5.4 Clothing and Equipment



6. TECHNICAL MEETINGS

7. COMPETITION SCHEDULE AND VENUES

- 7.1 Medals
- 7.2 Training Dates
- 7.3 Competition Dates
- 7.4 Day by Day Program

8. CEREMONIES

9. GENERAL INFORMATION

- 9.1 Results Distribution
- 9.2 Opening & Closing Ceremony

10. DOPING CONTROL (RULES AND PROCEDURES)

11. MAPS, VENUE PLANS AND TECHNICAL DATA

12. CONTACTS





1. International and National Sport Federations

International University Sports Federation (FISU)

President

Claude-Louis Gallien (FRA)

Secretary General/CEO

Eric Saintrond (BEL)

Maison du Sport International

Av. de Rhodanie 54

CH - 1007 Lausanne, Switzerland

Ph. +41 (0) 216130810

Fax +41 (0) 216015612

fisufisunet

www.fisu.net

World Curling Federation (WCF)

WCF President

Kate Caithness (SCO)

Secretary General

Colin Grahamslaw (GBR)

74 Tay Street

Perth PH2 8NP, Scotland

Ph. 44 1738 451 630

Fax 44 1738 451 641

info@worldcurling.org

www.worldcurling.org

Centro Universitario Sportivo Italiano (CUSI)

President

Leonardo Coiana (ITA)

Secretary General/CEO

Antonio Dima (ITA)

Sede Nazionale

Via Angelo Brofferio, 7

00195 Roma

Ph. 06 3722206

Fax 06 3724479

cusi@cusi.it

www.cusi.it

Federazione Italiana Sport Ghiaccio (FISG)

President

Giancarlo Bolognini (ITA)

Secretary General

Alberto Berto (ITA)

Via G.B. Piranesi, 46 - 20137 Milano

www.fisg.it





2. FISU Sport Technical Committee

INTERNATIONAL TECHNICAL COMMITTEE FOR WINTER UNIVERSIADE (CTI-UH)

Chair

Roger Roth (SUI)

Vice-Chair

Robert Philip (CAN)

Members:

- › Matjaz KRANJC (SLO) - Alpine Skiing
- › Ondrej RYBAR (CZE) - Biathlon
- › Zofia KIELPINSKA (POL) - Cross Country Skiing
- › Jeanette JOHNSTON (GBR) - Curling
- › Marie LUNDMARK (FIN) - Figure Skating
- › Luc KOHLY (FRA) - Freestyle Skiing
- › Lars G. KARLSSON (SWE) - Ice Hockey
- › Frederick MEREDITH (GBR) - Ice Hockey
- › Karl LUSTENBERGER (SUI) - Nordic Combined
- › Nam Hwan PARK (KOR) - Short Track Speed Skating
- › Ola SUNDEKVIST (SWE) - Snowboarding
- › Louw HEKKEMA (NED) - Speed Skating
- › Paul GANZENHUBER (AUT) - Ski Jumping

FISU SPORT TECHNICAL COMMITTEE

Winter Universiade 2013

The CTI (International Technical Committee) - UH (Winter Universiade) is responsible for:

1. cooperating with the CRS in drawing up the technical regulations of the Winter Universiade;
2. advising the EC concerning any general problem of technical matters;
3. controlling the technical conduct of the Winter Universiade.

CTI Chair Winter Universiade

Roger Roth (SUI)

Director Winter Universiade

Milan Augustin (SVK)

Executive Assistant Winter Universiade

Jiho Kim (KOR)

ORGANISING COMMITTEE STRUCTURAL CHART (OC)

[Refer to documents published at the end, page A1 >](#)

SPORT & VENUES ORGANISATIONAL STRUCTURE

[Refer to documents published at the end, page A2 >](#)





3. Curling Venue

3.1 INTRODUCTION TO THE VENUE

Competition Venue

Baselga di Pinè

- › Distance from Hotel Accommodation: in an area range from 0 to 3 km;
- › Distance from Trento: 20 km;

Location

All curling games will be played in the Ice Rink Pinè Stadium.

The Ice Rink Piné Stadium is located in Baselga di Piné at an altitude of 1.000 mt a.s.l., in the eastern part of Trentino, on a beautiful plateau surrounded by a great mountain scenery.

Spectator Information

- › Facility Capacity: 1.800

Training Sites

- › Same as competition



3.2 TRANSPORT SERVICE

Trentino 2013 WUOC guarantees transportation service for all accredited persons of the 26th Winter Universiade.

The service can change day by day due to the competition schedule. For information regarding the athletes and officials transportation services, schedules and timetables, please refer to the Transportation Manual.

The transport service is provided by Trentino Trasporti.

Distances between Trento, Cluster & Venues are shown in the following table.

DISTANCES - Km

[Refer to documents published at the end, page A3 >](#)

DISTANCE (Trento Train Station - San Bartolameo MOC)

[Refer to documents published at the end, page A4 >](#)

TRANSPORT (Trento - Baselga di Piné)

[Refer to documents published at the end, page A5 >](#)

3.3 DISTANCES FROM VENUES

[Refer to documents published at the end, page A6 >](#)

CLUSTER 3 MAP - BASELGA DI PINÈ

[Refer to documents published at the end, page A7 >](#)

TRANSPORT

[Refer to documents published at the end, page A8 >](#)





DISTANCE FROM TRENTO TO MAIN AIRPORTS



DISTANCE FROM TRENTO	
Verona	76 km
Bergamo	138 km
Venezia	221 km
Milano	235 km

4. General Rules

4.1 CURLING - FISU TECHNICAL REGULATIONS

Referring to Regulations

for the 26th Winter Universiade 2013 Trentino

The curling event will be organised in accordance with the most recent technical regulations of the World Curling Federation (WCF). In any dispute the English text will be regarded as authoritative.

The competition will include a tournament with a maximum of twenty (20) teams, ten (10) women's and ten (10) men's teams. Each team may enter five (5) players.

At the first General Technical Meeting, the Head of Delegation or his/her representative shall confirm and sign the official list of competitors accredited by the CIC.

The CT for curling is empowered to select the competing teams on the basis of previous Winter Universiade results or results of selection matches.

Three (3) months before the start of the Winter Universiade, WCF will communicate to the Organising Committee the names of the WCF umpires who must be invited by the OC no less than three (3) months before the start of the Winter Universiade.

4.2 INSURANCE

Referring to Regulations

for the 26th Winter Universiade 2013 Trentino

Participating countries must have the appropriate insurance to cover travel and participation, as they are the responsibility neither of the Organising Committee nor of FISU.

Participating countries must therefore have insurance for the medical care of the whole delegation. Only first aid procedures related to the Games will be covered by the OC and only for accredited persons.





4.3 PROTESTS

Referring to Regulations for the 26th Winter Universiade 2013 Trentino

For all inquiries regarding protests, please refer to ISU Rule 123. All protests must be lodged with the Referee in writing. At the same time 50 Euro or other convertible currency to the same value must be deposited.

4.4 MEDICAL CARE

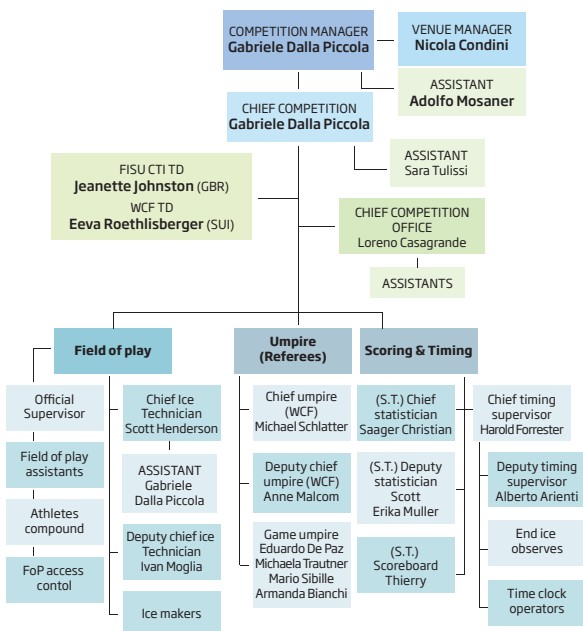
Referring to Regulations for the 26th Winter Universiade 2013 Trentino

The Organising Committee will ensure free adequate medical assistance for the FISU Family, participants and all accredited persons during the Winter Universiade.

5. Competition Management

5.1 CURLING STRUCTURAL CHART

Baselga di Pinè



Competition Manager	Curling	Gabriele Dalla Piccola	gabriele.dallapiccola@gmail.com
Venue Manager	Baselga di Pinè	Nicola Condini	nicola.condini@universiadetrentino.org



ITOs: International Technical Officials
TD - Umpires - Ice Technician- Timing

FISU & WCF TDs		
Name	Country	Role
Jeanette Johnston	GBR	FISU TD
Eeva Roethlisberger	SUI	WCF TD
Umpires		
Michael Schlatter	SUI	Chief
Anne Malcolm	SCO	Deputy
Eduardo De Paz	ESP	Game
Michaela Trautner	GER	Game
Mario Sibille	ITA	Game
Armanda Bianchi	ITA	Game
Ice Technician		
Scott Henderson	SCO	Chief
Gabriele Dalla Piccola	ITA	Assistant Chief
Ivan Moglia	ITA	Deputy Chief
Timing		
Harold Forrester	SCO	Chief Supervisor
Alberto Arienti	ITA	Deputy Supervisor

5.2 COMPETITION FORMAT

Competition play

Men's and Women's Curling competitions in the WU Trentino 2013 will consist of ten teams. The competitions will start with the Round Robin competition from 12 to 20 December 2013. Each team will play against each of the other teams. Based on the results, the top four teams will be advanced to the semifinals, which will be held on December 19th. The medal games for men and women will be held on 19th December for bronze and on the 20th for gold medals.

Rankings and Tie-breakers

Rankings within the Round Robin competition and the tie-breaker formulas will be determined in accordance with the guidelines outlined in the WCF Official Rules of Play and Competition Handbook. Any tie-breaker game will take place on 18th December after the Round Robin competition.

Venue Technical Information

The Ice Rink Piné is 30 x 60 meters with five sheets for the curling competition. Each sheet measures 44,5m long by 5,0m width.

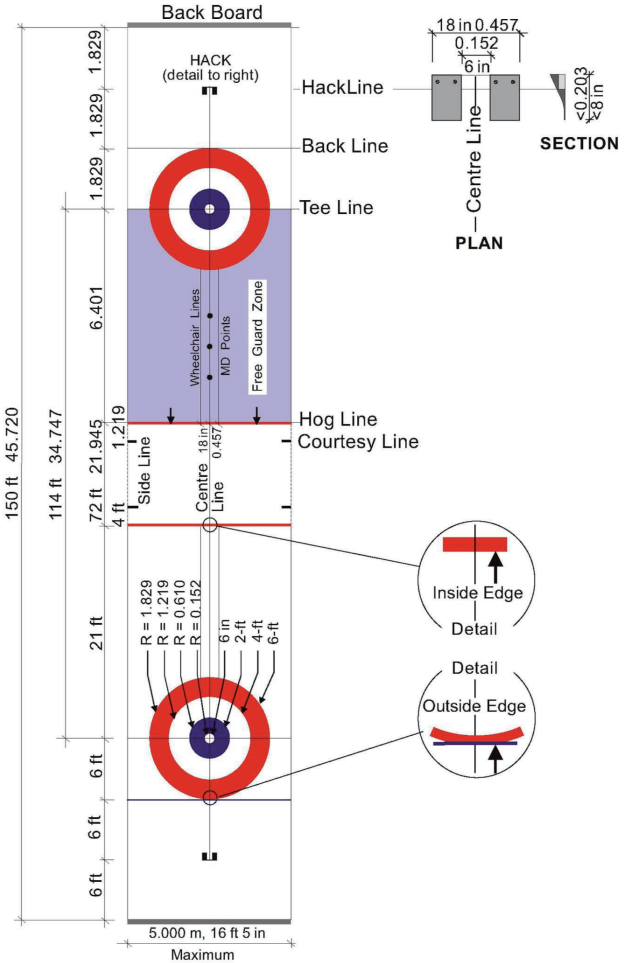
Sport Disc	Curling	
Event	Men	Women
Compet. Format	<ul style="list-style-type: none">› 10 teams of 5 players› 9 draws - round robin (see comp.schedule)› Semifinal› Bronze medal game› Final	<ul style="list-style-type: none">› 10 teams of 5 players› 9 draws - round robin (see comp.schedule)› Semifinal› Bronze medal game› Final





ICE DIMENSIONS

(all measurements in metres, feet and inches)



5.3 FINAL ENTRIES - DEADLINES

Deadline	Form Type	Entry Form	Contents
11.09.2013	Q - 1	Quantitative Entry	Confirm number of participants
11.11.2013	N - 5 N - 12 N - 14 I - 5 I - 12	Nominative Entry Nominative Entry Nominative Entry Delegation Individual Entry Individual Entry	Confirm name of participants
	Official Letter	Payment of 50% of total cost of the stay per participant and nominated Judges of the Delegations	
	Athlete Biography	Competitors / Teams biography	Information for media
	PPC Form	Planned Program Content	
	N - 16	Nominative Entry - Travel	Travel Information





5.4 CLOTHING AND EQUIPMENT

For equipment Winter Universiade Curling competition:
refer to World Curling Federation Technical Rules on point R10
and C3.

In particular :

R10 EQUIPMENT

- (a) No player shall cause damage to the ice surface by means of equipment, hand prints, or body prints.
- (b) Teams must not use electronic communication equipment, or any device to modify the voice, during a game.
- (c) When a properly functioning electronic hog line device is being used:
 - (i) The handle must be properly activated so that it is functioning during the delivery, or it will be considered a hog line violation stone.
 - (ii) A glove or mitt must not be worn on the delivery hand during the delivery of a stone.
- (d) A player may change the type of brush or synthetic broom at any time during a game, provided there is no delay. A player choosing to sweep with a corn broom must use only that style of broom during the entire game.
- (e) The use of a delivery stick shall be restricted as follows:
 - (i) The delivery stick may not be used in any WCF competition or qualifying event, except wheelchair events.
 - (ii) Players choosing to deliver with a delivery stick must use that device for the delivery of all their stones during the entire game.
 - (iii) The stone must be delivered along a straight line from the hack to the intended target.
 - (iv) The stone must be clearly released from the delivery stick before either foot of the player delivering

the stone has reached the tee line at the delivering end.

- (v) A delivery stick shall not convey any mechanical advantage other than acting as an extension of the arm/hand.

C3 UNIFORMS/EQUIPMENT

- (a) All team members wear identical uniforms and appropriate footwear when accessing the field of play for games or practice sessions. The team wears light-coloured shirts and playing jackets/sweaters when assigned stones with light-coloured handles, and wears dark-coloured shirts and playing jackets/sweaters when assigned stones with dark-coloured handles. The colour of these garments shall be registered with the WCF prior to the start of each competition. The team coaches/officials must wear a team or national uniform whenever accessing the field of play. Red is considered to be a dark colour.
- (b) Each shirt and jacket/sweater has the player's surname, in 5.08 cm. (2-in.) or large letters, across the upper back of the garment, and the name under which their Association/Federation competes, in 5.08 cm. (2-in.) or larger letters, across the back above the waist. If desired, a national emblem may also be worn on the back, but only in addition to the name under which the Association/Federation competes, and displayed between that name and the player's surname. When two or more team members have the same surname, the first letter(s) of their given names are also displayed.
- (c) Advertising is permitted on a player's clothing or equipment strictly in accordance with the current guidelines issued by the WCF. The WCF may, in its sole discretion, forbid the use of any clothing or equipment that it feels is unacceptable or unsuitable for WCF competition play.





6. Technical Meetings

TECHNICAL MEETINGS			
Date	Time	Description	Location
Dec. 10	17:00 - 18:00	1 st Technical Committee Meeting	Centro Congressi Baselga di Pinè
	18:00 - 19:00	1 st Captains Meeting	Centro Congressi Baselga di Pinè

CTI UH MEETINGS			
Date	Time	Description	Location
Dec. 8	14:00	First CTI-UH Meeting	Hotel Lagorai
Dec. 18	20:00	Final CTI-UH Meeting (followed by CTI reception)	San Bartolameo

7. Competition Schedule & Venues

Refer to documents published at the end, page A9 >

7.1 MEDALS

2 medal events

MEDALS		
Men	Women	Location
Tournament	Tournament	Ice Rink Pinè Stadium

7.2 TRAINING DATES

TRAINING DATES			
OFFICIAL TRAININGS			
Date	Time	Description	Location
Dec. 10	09:00 - 10:15	Women Practice Session 1	Ice Rink Pinè Stadium
	10:45 - 12:00	Men Practice Session 1	Ice Rink Pinè Stadium
	13:15 - 14.30	Men Practice Session 2	Ice Rink Pinè Stadium
	15:00 - 16.15	Women Practice Session 2	Ice Rink Pinè Stadium
Dec. 11	08:30 - 09:45	Women Practice Session 1	Ice Rink Pinè Stadium
	10:15 - 11.30	Men Practice Session 1	Ice Rink Pinè Stadium
	12.30 - 13:45	Men Practice Session 2	Ice Rink Pinè Stadium
	14:15 - 15.30	Women Practice Session 2	Ice Rink Pinè Stadium





**Baselga di Pinè -
Official competition & Training Schedule**

[Refer to documents published at the end, page A10 >](#)

7.3 COMPETITION DATES

9 competition days

[Refer to documents published at the end, page A11 >](#)

COMPETITION DATES		
Date	Time	Description
12.12.2013	09:00-12:00	Women
	14:00-17:00	Men
	19:00-22:00	Women
13.12.2013	09:00-12:00	Men
	14:00-17:00	Women
	19:00-22:00	Men
14.12.2013	09:00-12:00	Women
	14:00-17:00	Men
	19:00-22:00	Women
15.12.2013	09:00-12:00	Men
	14:00-17:00	Women
	19:00-22:00	Men
16.12.2013	09:00-12:00	Women
	14:00-17:00	Men
	19:00-22:00	Women
17.12.2013	09:00-12:00	Men
	14:00-17:00	Women
	19:00-22:00	Men
18.12.2013	09:00-12:00	Men/Women
	14:00-17:00	Men/Women
	19:00-22:00	Men/Women
19.12.2013	09:00-12:00	Men/Women
	15:00-18:00	Men/Women
20.12.2013	09:00-12:00	Women
	14:00-17:00	Men

7.4 DAY BY DAY PROGRAM

[Refer to documents published at the end, page A12 >](#)





8. Ceremonies

MEDAL CEREMONY

The Organising Committee shall provide medals, the design of which shall be approved by the FISU Executive Committee.

The medals will be awarded to the first three teams and to a maximum of three (3) team officials (including head coach + two (2) team officials) as follows:

- › Third: Bronze medal
- › Second: Silver/Silver gilt medal;
- › First: Gold/Gilt medal;

The official languages for the awarding ceremonies in the stadium will be English and the language of the organising country.

In addition to medals, awards may be given only after agreement with the FISU Executive Committee.

During Medal Awarding Ceremony, the athletes are not allowed to bring on the podium national flags or any religious or cultural symbols and are expected to take caps off.

Athletes are required to remain at disposal of the press to take photos after the ceremony before leaving the ice.

Medal Ceremony Timetable			
Date	Time	Location	Discipline
Fri. 20 Dec.	17:00	Baselga di Pinè, Ice Stadium	Curling W/M

9. General Information

9.1 RESULTS DISTRIBUTION

	Start List	Official Results	Daily Programme	Other Information
Competition Office	x	x	x	x
Athletes Compound	x	x	x	x
Press Center	x	x	x	x
Accomodation Sites (notice board)	x	x	x	x
www.universiadetrentino.org	x	x	x	x

9.2 OPENING & CLOSING CEREMONY

Opening Ceremony	
Date	11 December 2013
Time	18.00
Location	Trento Main Square

Closing Ceremony	
Date	21 December 2013
Time	18.00
Location	Alba di Canazei





10. Doping Control Rules & Procedures

Referring to Regulations for the 26th Winter Universiade 2013 Trentino

Doping control will be carried out for CU in Baselga di Pinè at the Ice Rink.

Athletes to be tested will be accompanied by marshals.

At the first TCM medical responsible staff for doping control will give adequate information to all team officials.

11. Maps, Venue Plans and Technical Data

Refer to documents published at the end, page A14 >

12. Contacts

Competition & Venue Management for the Trentino WU 2013

Ubaldo Prucker - *Sport Director*

Office 0039 0461 499009 - Ph. 0039 366 7888599

ubaldo.prucker@universiadetrentino.org

Michela Filippi - *Assistant*

Office 0039 0461 499297 - Ph. 0039 334 6660598

michela.filippi@universiadetrentino.org

Gabriele Dalla Piccola - *Competition Manager - Curling*

gabriele.dallapiccola@gmail.com

Nicola Condini - *Venue Manager - Baselga di Pinè*

nicoala.condini@universiadetrentino.org

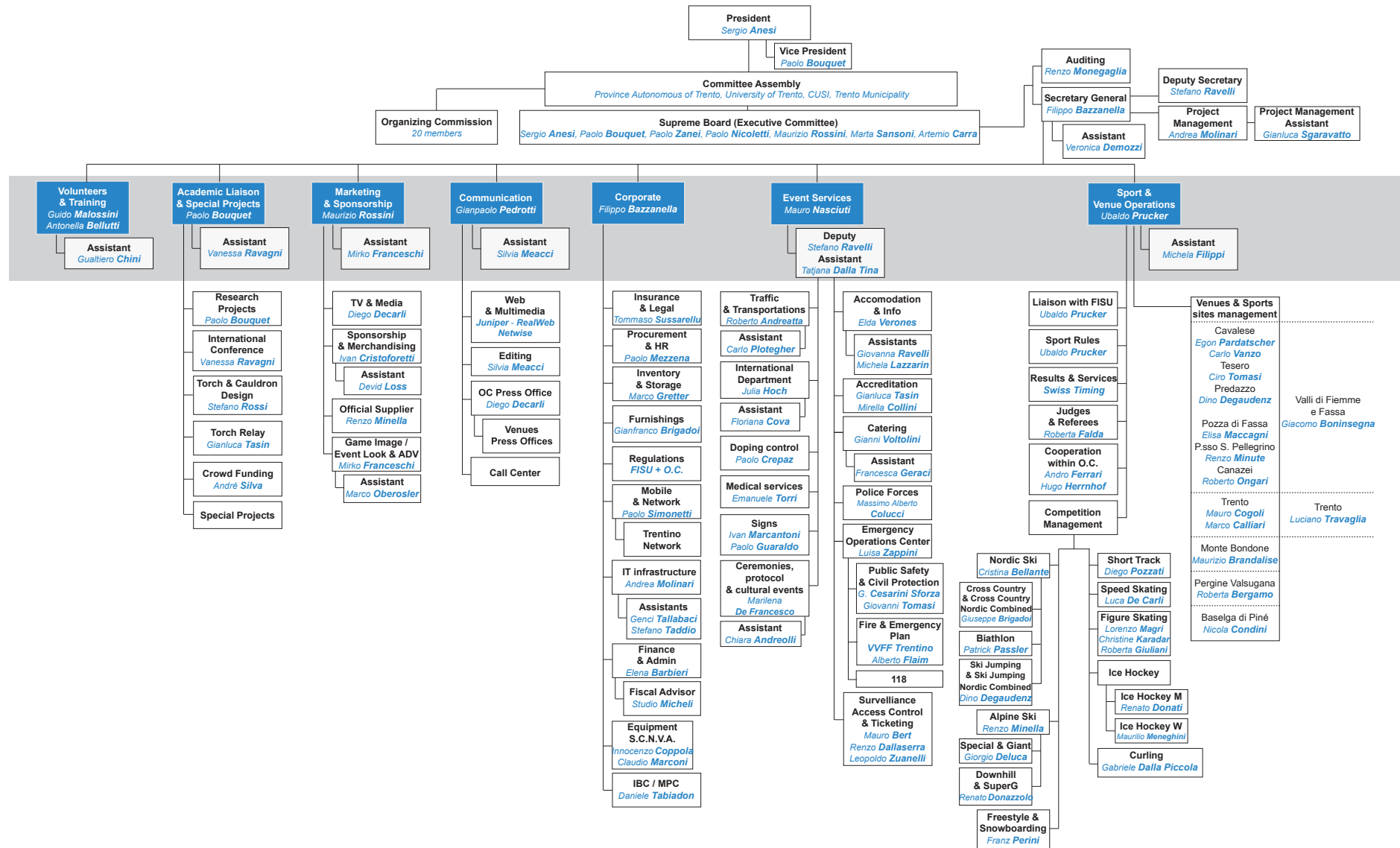
Links

www.universiadetrentino.org



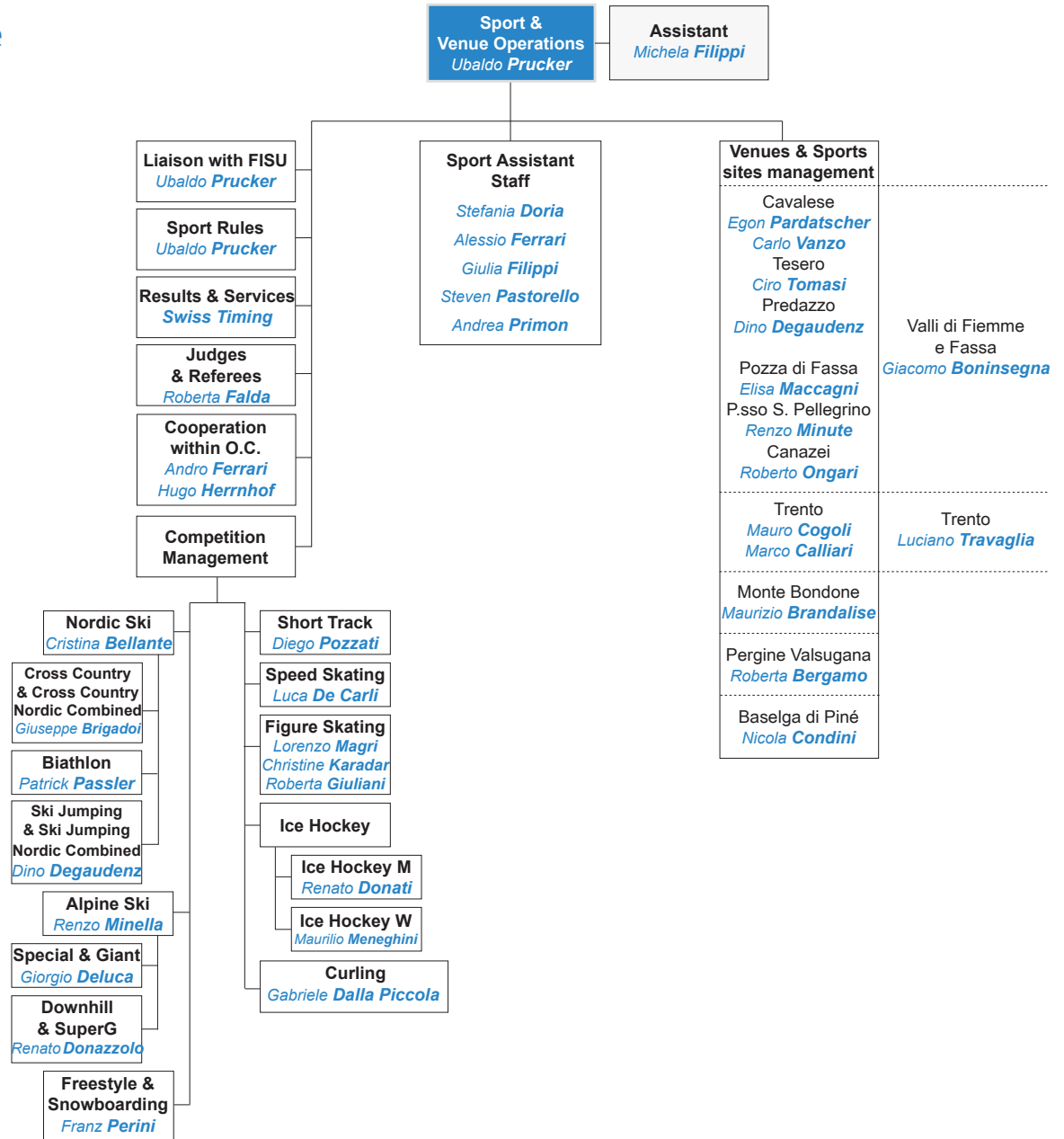


Organising Committee Structural Chart (OC)





Sports & Venues Organisational Structure



DISTANCES - Km

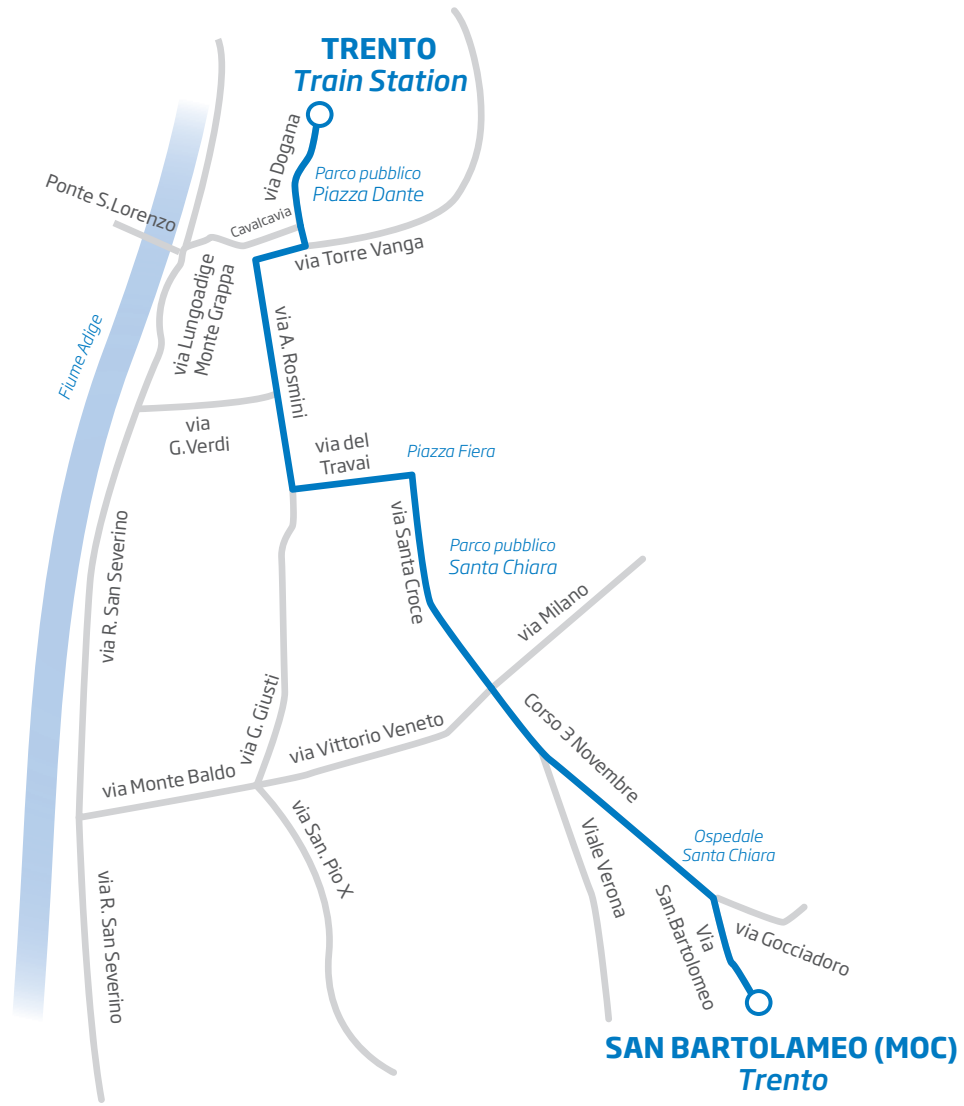
	Trento	Monte Bondone loc. Montesel	Pergine Valsugana - Stadio del ghiaccio	Miola di Pinè - Stadio del ghiaccio ICE RINK PINÉ	Cavalese - Stadio del ghiaccio	Lago di Tesero	Predazzo - Loc.Stallmen	Passo San Pellegrino	Pozza di Fassa - Loc. Aloch	Alba di Canazei - Stadio del ghiaccio "Scola"
Trento		20	12	20	64	69	79	97	95	105
Monte Bondone loc. Montesel	20		37	45	85	90	100	118	116	126
Pergine Valsugana - Stadio del ghiaccio	12	37		10	48	49	58	76	74	84
Miola di Pinè - Stadio del ghiaccio ICE RINK PINÉ	20	45	10		38	37	48	66	64	74
Cavalese - Stadio del ghiaccio	64	85	48	38		5	14	32	30	40
Lago di Tesero	69	90	49	37	5		10	28	26	36
Predazzo - Loc.Stallmen	79	100	58	48	14	10		18	17	27
Passo San Pellegrino	97	118	76	66	32	28	18		19	29
Pozza di Fassa - Loc. Aloch	95	116	74	64	30	26	17	19		12
Alba di Canazei - Stadio del ghiaccio "Scola"	105	126	84	74	40	36	27	29	12	

	Trento
	Monte Bondone
	Pergine Valsugana
	Miola di Pinè
	Cavalese
	Lago di Tesero
	Predazzo
	Passo S. Pellegrino
	Pozza di Fassa
	Alba di Canazei



DISTANCE

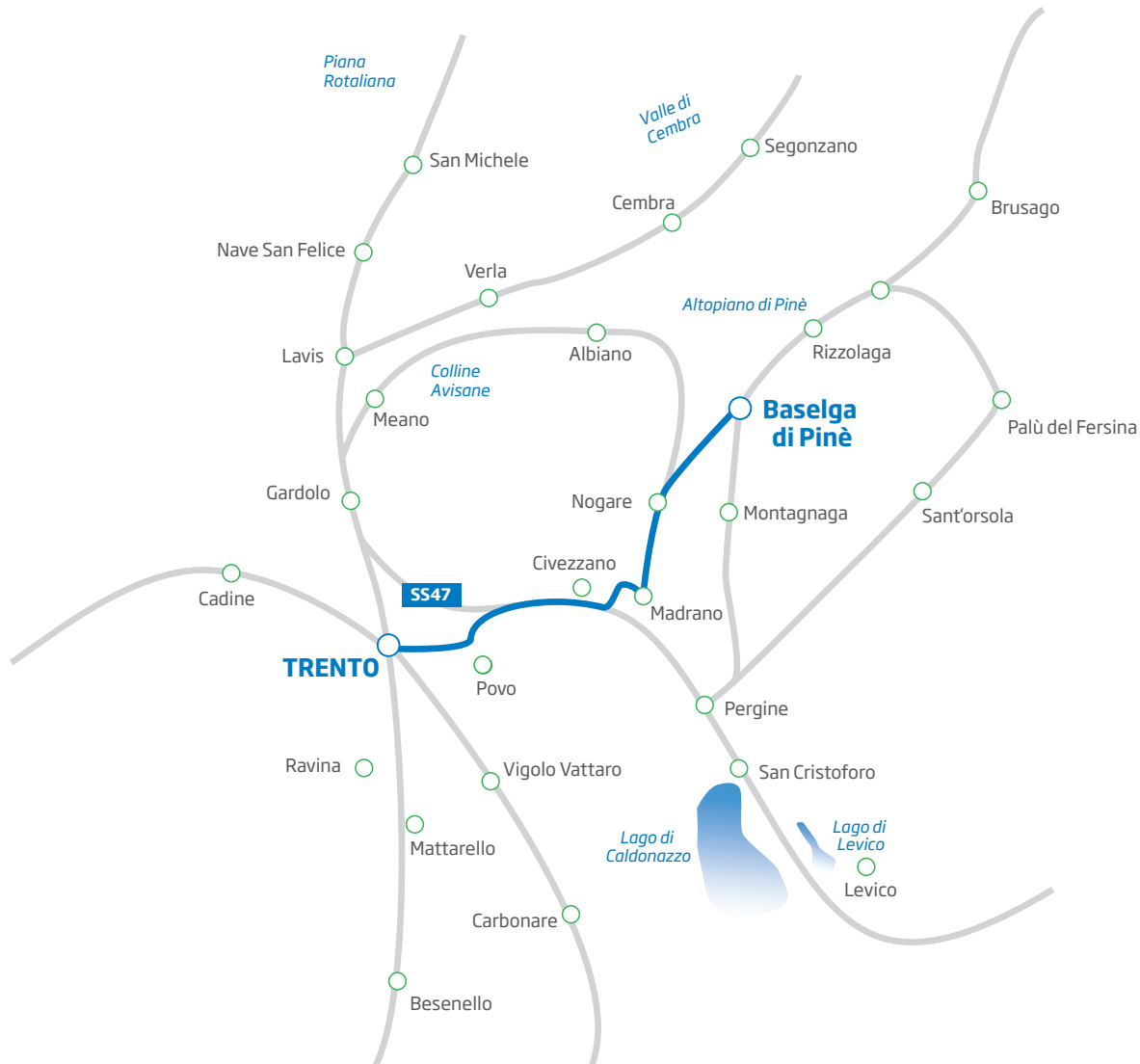
Trento Train Station - San Bartolameo (MOC)





TRANSPORT

Trento - Baselga di Pinè



DISTANCE FROM TRENTO	
Baselga di Pinè	20 km

DISTANCES FROM VENUES

	TRENTO - Railroad station	MONTE BONDONE - Montesel	PERGINE VALSUGANA - Ice Stadium	MIOLA DI PINÈ - Ice Rink Piné	CAVALESE - Ice Stadium	LAGO DI TESERO	PREDAZZO - Stallmen	PASSO SAN PELLEGRINO	POZZA DI FASSA - Aloch	ALBA DI CANAZEI - Ice Stadium "Scola"
TRENTO - Railroad station		20	12	20	64	69	79	97	95	105
MONTE BONDONE - Montesel	20		37	45	85	90	100	118	116	126
PERGINE VALSUGANA - Ice Stadium	12	37		10	48	49	58	76	74	84
MIOLA DI PINÈ - Ice Rink Piné	20	45	10		38	37	48	66	64	74
CAVALESE - Ice Stadium	64	85	48	38		5	14	32	30	40
LAGO DI TESERO	69	90	49	37	5		10	28	26	36
PREDAZZO - Stallmen	79	100	58	48	14	10		18	17	27
PASSO SAN PELLEGRINO	97	118	76	66	32	28	18		19	29
POZZA DI FASSA - Aloch	95	116	74	64	30	26	17	19		12
ALBA DI CANAZEI - Ice Rink "Scola"	105	126	84	74	40	36	27	29	12	

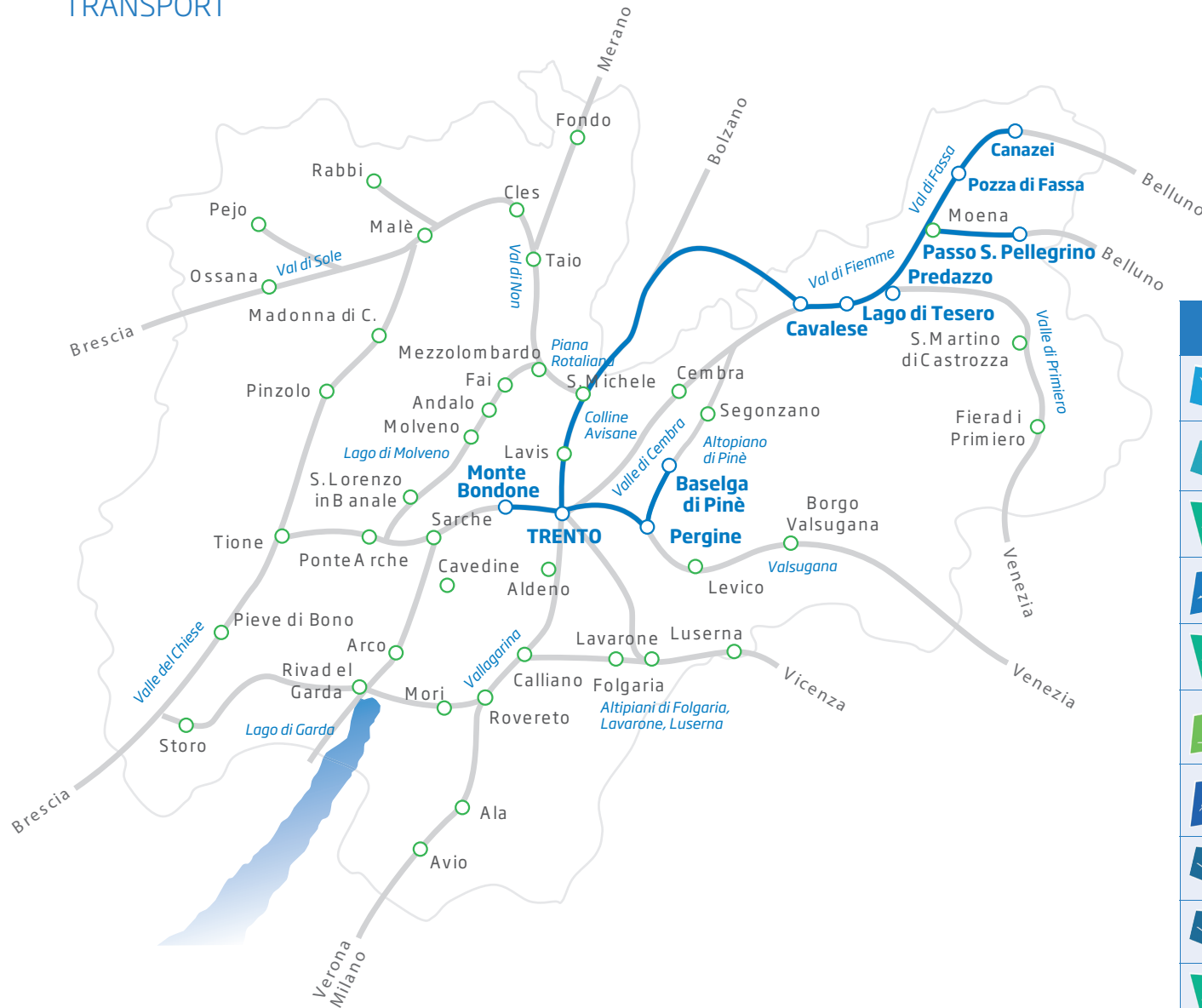
CLUSTER 3 MAP - Baselga di Piné



- DELEGATION
- JUDGES & REFEREES
- MEDIA & PRESS
- SWISS TIMING



TRANSPORT



DISTANCE FROM TRENTO		
	Trento	
	Monte Bondone	20 km
	Pergine Valsugana	12 km
	Baselga di Pinè	20 km
	Cavalese	64 km
	Lago di Tesero	69 km
	Predazzo	79 km
	Passo S. Pellegrino	97 km
	Pozza di Fassa	95 km
	Alba di Canazei	105 km




COMPETITION SCHEDULE & VENUES

XXVI Winter Universiade Trentino 2013 - Competition Schedule, December 11th-21st, 2013														
DECEMBER	TUE 10 DAY 0	WED 11 DAY 1	THU 12 DAY 2	FRI 13 DAY 3	SAT 14 DAY 4	SUN 15 DAY 5	MON 16 DAY 6	TUE 17 DAY 7	WED 18 DAY 8	THU 19 DAY 9	FRI 20 DAY 10	SAT 21 DAY 11		
Ceremonies		Tronto Opening Ceremony 18:00										Canazei Closing Ceremony 18:00		
Passo San Pellegrino Alpine Skiing DH, SG, GS, SL	Alpine Skiing 9:00-12:00 Free Skiing W/M DH	Alpine Skiing 08:00-9:30 Insp. W 08:30-9:30 Insp. M 10:30 Training W DH 11:30 Training M DH	Alpine Skiing 12:45 Skiatlon W 5km(C) + 5km(F) 15:15 Skiatlon M 7,5km(C) + 7,5km(F)	Alpine Skiing 19:00 DH W 12:00 DH M	Alpine Skiing 08:00-09:00 Insp. M 10:00 SG M	Alpine Skiing 08:00-09:00 Insp. W 10:00 SG W	Alpine Skiing 09:30-12:00 Free Skiing GS Poza	Alpine Skiing 10:00 GS M 1 st 13:00 GS W 2 nd M	Alpine Skiing 10:00 GS W 1 st M 13:00 GS W 2 nd M AS Combined	Alpine Skiing 17:00 SL W 1 st M 20:00 SL W 2 nd M AS Combined	Alpine Skiing 17:00 SL W 1 st M 20:00 SL W 2 nd M AS Combined	Alpine Skiing 17:00 SL W 1 st M 20:00 SL W 2 nd M AS Combined	Alpine Skiing 17:00 SL W 1 st M 20:00 SL W 2 nd M AS Combined	10
Lago di Tesero Cross-Country Skiing	Cross-Country Unoff. Training W/M Passo Lavazè	Cross-Country 12:30-14:30 Off. Train. Skiatlon W/M Unoff. Training W/M Passo Lavazè	Cross-Country 12:45 Skiatlon W 5km(C) + 5km(F) 15:15 Skiatlon M 7,5km(C) + 7,5km(F)	Cross-Country 18:00-19:30 Off. Train. Sprint Unoff. Training W/M Passo Lavazè	Cross-Country 12:30 Official Train. W/M 13:40 Sprint Q (C) W/M 16:00 Sprint F (C) W/M	Cross-Country 15:30 Mixed T. Sprint Q W/W	Cross-Country 16:00-18:00 Off. Training Individual W/M	Cross-Country 13:30 Ind. 5km (F) W 15:15 Ind. 10km (F) M	Cross-Country 16:00-18:00 Off. Training Relay W/M Passo Lavazè During the day	Cross-Country 13:00 Relay 3x5km (C+FF) W 14:50 Relay 4x10km (C+FF) M	Cross-Country Official Training Mass Start 16:00 15km(C) W Mass Start	Cross-Country Official Training Mass Start 10:00 30km (C) M Mass Start	11	
Predazzo Lago di Tesero Nordic Combined			Nordic Combined 10:00-11:30 Off. Tr. Ind. Gundersen HS 106 17:00-18:00 Off. Train. 10 km CC	Nordic Combined 10:00 Individual HS 106 17:00 Ind. Gundersen 10km		Nordic Combined 13:30 Off. Train Mass Start HS 106 17:30 Off. Train Mass Start 10 km	Nordic Combined 14:15 Mass Start 10km 18:00 Mass Start HS 106	Nordic Combined 9:30 Off. Train. Team HS 106 17:00 Off. Train. 3x5km	Nordic Combined 10:00 Team HS 106 14:00 Team 3x5km				3	
Predazzo Ski Jumping			Ski Jumping 14:00-15:00 Off. Train W HS 106 15:00-16:00 Off. Train M HS 106	Ski Jumping 17:00-18:00 Off. Train W HS 106 18:00-19:00 Off. Train M HS 106	Ski Jumping 17:00 Trial M/W 18:00 HS 106 M/W	Ski Jumping 11:00-13:00 Off. Train M/W Mixed Relay	Ski Jumping 11:00 Trial Mixed Relay 12:00 HS 106 Mixed Relay 17:00-19:30 Off. Train M Team HS106	Ski Jumping 17:00 Trial M Team 18:00 HS 106 M Team	Ski Jumping 18:00-19:30 Off. Train M HS134	Ski Jumping 18:00-19:30 Off. Train M HS134	Ski Jumping 17:00 Trial M 18:00 HS 134 M	Ski Jumping 17:00 Trial M 18:00 HS 134 M	5	
Monte Bondone Snowboarding	Snowboarding 10:00-10:20 SBX Insp. 10:30-12:30 Training W/M SBX	Snowboarding 09:00-09:15 SBX Insp. W/M 09:30-10:30 Training W/M 10:45-14:45 SBX Q W/M	Snowboarding 09:00-09:15 SBX Insp. W/M 09:30-10:30 Training W/M 10:30-12:00 SBX Finals W/M			Snowboarding 09:00-12:00 Training W/M HP	Snowboarding 08:30-09:20 HP Training 09:30-12:00 HP Q W/M	Snowboarding 08:30-09:30 HP T. SF W/M 09:00-10:00 HP SF W/M 09:00-12:00 Free riding on competition slope W/M PCS 14:30 - 15:30 Training W/M SBS 11:00-12:00 HP Finals W/M	Snowboarding 09:00-12:00 Free riding on competition slope W/M PCS 14:30 - 15:30 Training W/M SBS	Snowboarding 09:00-09:30 PCS Insp. W/M 09:45-12:15 PGS Q, W/M 13:00-15:30 PGS Finals W/M 14:30-15:30 Training W/M SBS	Snowboarding 09:00-09:45 SBS Train W/M 10:00-12:00 SBS Q W/M	Snowboarding 08:30-09:15 SBS Tr. W/M 09:30-10:30 SBS SF W/M 10:45-11:15 SBS Tr. F W/M 11:30-12:30 SBS Finals W/M	8	
Lago di Tesero Biathlon	Biathlon Unofficial Training	Biathlon 9:00-10:30 Unoff. Train. M 10:40-12:10 Unoff. Train. W	Biathlon 09:00-10:30 Off. Train. M 10:40-12:10 Off. Train. W	Biathlon 09:20-10:10 Zero M 10:15-12:10 20km M 12:20-13:10 Zero W 13:15-14:50 15km W	Biathlon 08:30-10:00 Off. Train. M 10:10-11:30 Off. Train. W	Biathlon 08:50-09:40 Zero M 10:45-11:30 10km M 11:40-12:30 Zero W 12:35-14:00 7,5km W	Biathlon 09:55-10:40 Zero M 10:45-11:30 Purs. M 11:35-12:20 Zero W 12:25-13:10 Purs. W	Biathlon 09:00-11:00 Off. Train. W/M	Biathlon 10:00-10:50 Zero W/M 11:00-12:40 Mixed Relay 2x6km W + 2x7,5km M	Biathlon 09:00-10:30 Off. Train. W/M	Biathlon 11:00-11:50 Mass S. M 11:55-12:25 Zero W 12:30-13:10 Mass S. W	Biathlon 10:10-10:50 Zero M 11:00-11:50 Mass S. M 11:55-12:25 Zero W 12:30-13:10 Mass S. W	9	
Alba di Canazei (1) Cavalese (2) Ice Hockey	Ice Hockey 16:30-19:00 ITA-LAT (1) 20:30-23:00 USA-SWE (1) 20:00-22:30 CAN-JPN (2)	Ice Hockey Official Training	Ice Hockey 16:30-19:00 RUS-GBR (1) 20:30-23:00 SVK-CZE (1) 20:00-22:30 KAZ-UKR (2)	Ice Hockey 16:30-19:00 ITA-LAT (1) 20:30-23:00 LAT-USA (1) 20:00-22:30 CAN-UKR (2)	Ice Hockey 16:30-19:00 RUS-GBR (1) 20:30-23:00 CZE-RUS (1) 20:00-22:30 KAZ-JPN (2)	Ice Hockey 16:30-19:00 ITA-USA (1) 20:30-23:00 SWE-LAT (1) 20:00-22:30 CAN-KAZ (2)	Ice Hockey 16:30-19:00 RUS-SVK (1) 20:30-23:00 CZE-GBR (1) 20:00-22:30 UKR-JPN (2)	Ice Hockey 16:30-18:30 09-0112 (2) 20:00-22:30 010-0111 (2)	Ice Hockey 16:30-19:00 QF1-QF4 (1) 20:30-23:00 QF2(1) 16:00-18:30 QF3(2) 20:00-22:30 QF4(2)	Ice Hockey 16:30-19:00 QF1-QF4 (1) 20:30-23:00 QF2(1) 16:00-18:30 QF3(2) 20:00-22:30 QF4(2)	Ice Hockey 16:30-19:00 00:20:30-23:00 Semif1) 16:00-18:30 WQF1/4-LQF2/3(2) 20:00-22:30 LQF1/4-LQF2/3(2)	Ice Hockey 16:30-19:00 00:20:30-23:00 Semif1) 16:00-18:30 WQF1/4-LQF2/3(2) 20:00-22:30 LQF1/4-LQF2/3(2)	Ice Hockey 16:30-19:00 00:20:30-23:00 Semif1) 16:00-18:30 WQF1/4-LQF2/3(2) 20:00-22:30 LQF1/4-LQF2/3(2)	1
Pergine Ice Hockey	Ice Hockey 12:00-14:30 GBR-JPN 16:00-18:30 RUS-USA 20:00-22:30 ESP-CAN	Ice Hockey Official Training	Ice Hockey 12:00-14:30 GBR-USA 16:00-18:30 CAN-RUS 20:00-22:30 ESP-JPN	Ice Hockey 12:00-14:30 GBR-USA 16:00-18:30 CAN-GBR 20:00-22:30 USA-JPN	Ice Hockey Official Training	Ice Hockey 12:00-14:30 GBR-ESP 16:00-18:30 JPN-RUS 20:00-22:30 USA-ESP	Ice Hockey 12:00-14:30 RUS-GBR 16:00-18:30 JPN-CAN 20:00-22:30 USA-ESP	Ice Hockey Official Training	Ice Hockey 16:00-18:30 W5-F1 (R2-R3) 20:00-22:30 W5-F2 (R1-R4)	Ice Hockey 16:00-18:30 W5 place (R5-R6)	Ice Hockey 16:00-18:30 W5 place (R5-R6)	Ice Hockey 16:00-18:30 W5 place (R5-R6)	Ice Hockey 16:00-18:30 W5 place (R5-R6)	1
Trento Figure Skating	Figure Skating Official Training	Figure Skating 10:00 - 15:38 M S	Figure Skating 16:45 - 18:07 P S 18:15 - 22:16 M F	Figure Skating 16:45 - 18:07 P S 20:25 - 21:45 P F	Figure Skating 14:05 - 19:09 L S 19:15 - 22:29 D F	Figure Skating 14:05 - 17:49 L F 19:00 - 20:24 EXN							4	
Trento Short Track							Short Track 15:00-19:00 Unofficial Training W/M	Short Track 09:00-12:00 Off. Train. W/M 15:00-19:00 Off. Train. W/M	Short Track 11:00-13:00 Training 14:00 1500m W/M 18:30 3000m Rel. W heats 5000m Rel. M heats	Short Track 11:00-13:00 Training 14:00 800m W/M 18:30 3000m Rel. W SF 5000m Rel. M SF	Short Track 11:00-13:00 Training 14:00 1000m W/M 18:30 3000m Rel. W Final 5000m Rel. M Final	Short Track 11:00-13:00 Training 14:00 1000m W/M 18:30 3000m Rel. W Final 5000m Rel. M Final	8	
Baselga di Pinè Curling	Curling Official Training W/M 09:00-10:15 W 10:45-12:00 M 13:15-14:30 M 15:00-16:15 W	Curling Official Training W/M 08:30-9:45 W 10:15-11:30 W 12:30-13:45 M 14:15-15:30 W	Curling 09:00/19:00 draw 1-2 W 13:30 Curling Opening 14:00 draw 1 M	Curling 09:00/19:00 draw 2-3 M 14:00 draw 3 W	Curling 09:00/19:00 draw 4-5 W 14:00 draw 4 M	Curling 09:00/19:00 draw 5-6 M 14:00 draw 6 W	Curling 09:00/19:00 draw 7-8 W 14:00 draw 7 M	Curling 09:00/19:00 draw 8-9 M 14:00 draw 9 W	Curling Tie Break W/M 09:00/14:00/19:00 (if required)	Curling 09:00 Semifinals W/M 15:00 Bronze Medal W/M	Curling 09:00 Gold Medal W 14:00 Gold Medal M Closing Parade	Curling 09:00 Gold Medal W 14:00 Gold Medal M Closing Parade	Curling 09:00 Gold Medal W 14:00 Gold Medal M Closing Parade	2
Monte Bondone Freestyle Skiing			Freestyle Skiing 10:00-11:00 Ina. + Train SX W/M 13:30-15:30 Train SX W/M	Freestyle Skiing 10:00-14:00 Off. Training W/M SX	Freestyle Skiing 09:00-10:30 Train SX W/M 18:00-12:00 SX Q W/M	Freestyle Skiing 09:00-10:30 Train SX W/M 18:00-12:00 SX Q W/M	Freestyle Skiing 09:00-10:30 Train SX W/M 18:00-12:00 SX Q W/M	Freestyle Skiing 13:00-15:00 Off. Training W/M SS	Freestyle Skiing 13:00-15:00 Off. Training W/M SS	Freestyle Skiing 09:30-11:00 Off. Train. (T.Purs) 12:00 W 1000m 14:30 W 5000m 16:30-18:00 Off. Train.	Freestyle Skiing 10:00-12:00 Off. Train. (T.Purs) 13:00 W Team Pur. T. Trial 14:00 M Team Pur. T. Trial 16:00 Team Pur. Final W 18:30 Team Pur. Final M	Freestyle Skiing 10:00-12:00 Off. Train. (T.Purs) 13:00 W Team Pur. T. Trial 14:00 M Team Pur. T. Trial 16:00 Team Pur. Final W 18:30 Team Pur. Final M	4	
Baselga di Pinè Speed Skating	Speed Skating 10:00-12:00 Off. Tr. W/M 11:00-12:00 T & Trial Starts W/M	Speed Skating 10:00-12:00 Off. Tr. W/M 11:00-12:00 T & Trial Starts W/M	Speed Skating 10:00-12:00 Off. Train. W/M 17:00-18:00 Trial Starts W/M	Speed Skating 09:00-11:00 Off. Train. 12:00 W 1000m 14:30 W 5000m 16:30-18:00 Off. Train.	Speed Skating 09:00-11:00 Off. Train. 12:00 W 500m 13:30 M 1000m 15:30 M 500m 16:30-18:00 Off. Train.	Speed Skating 09:00-11:00 Off. Train. 12:00 W 500m 13:30 M 1000m 15:30 W 500m 16:30-18:00 Off. Train.	Speed Skating 10:00-12:00 Off. Tr. W/M 16:00-18:00 Off. Tr. W/M	Speed Skating 09:00-11:00 Off. Train. 12:00 W 1000m 14:30 W 5000m 16:30-18:00 Off. Train.	Speed Skating 09:00-11:00 Off. Train. 12:00 W 1000m 14:30 W 5000m 16:30-18:00 Off. Train.	Speed Skating 10:00-12:00 Off. Train. (T.Purs) 13:00 W Team Pur. T. Trial 14:00 M Team Pur. T. Trial 16:00 Team Pur. Final W 18:30 Team Pur. Final M	Speed Skating 10:00-12:00 Off. Train. (T.Purs) 13:00 W Team Pur. T. Trial 14:00 M Team Pur. T. Trial 16:00 Team Pur. Final W 18:30 Team Pur. Final M	Speed Skating 10:00-12:00 Off. Train. (T.Purs) 13:00 W Team Pur. T. Trial 14:00 M Team Pur. T. Trial 16:00 Team Pur. Final W 18:30 Team Pur. Final M	12	
DAILY MEDALS AWARD	0	0	5	8	8	9	3	8	10	10	13	4	78	



Baselga di Pinè - OFFICIAL COMPETITION & TRAINING SCHEDULE

	7:00	7:30	8:00	8:30	9:00	9:30	10:00	10:30	11:00	11:30	12:00	12:30	13:00	13:30	14:00	14:30	15:00	15:30	16:00	16:30	17:00	17:30	18:00	18:30	19:00	19:30	20:00	20:30	21:00	21:30													
 CURLING																																											
TUESDAY 10					Practice W Sess. 1 09:00 - 10:15				Practice M Sess. 1 10:45 - 12:00				Practice M Sess. 2 13:15 - 14:30				Practice W Sess. 2 15:00 - 16:15																										
WEDNESDAY 11				Practice W Sess. 1 08:30 - 09:45				Practice M Sess. 1 10:15 - 11:30				Practice M Sess. 2 12:30 - 13:45				Practice W Sess. 2 14:15 - 15:30																											
THURSDAY 12				Women draw 1 09:00 - 12:00											Curl. Open.	Men draw 1 14:00 - 17:00													Women draw 2 19:00 - 22:00														
FRIDAY 13				Men draw 2 09:00 - 12:00															Women draw 3 14:00 - 17:00													Men draw 3 19:00 - 22:00											
SATURDAY 14				Women draw 4 09:00 - 12:00															Men draw 4 14:00 - 17:00													Women draw 5 19:00 - 22:00											
SUNDAY 15				Men draw 5 09:00 - 12:00															Women draw 6 14:00 - 17:00													Men draw 6 19:00 - 22:00											
MONDAY 16				Women draw 7 09:00 - 12:00															Men draw 7 14:00 - 17:00													Women draw 8 19:00 - 22:00											
TUESDAY 17				Men draw 8 09:00 - 12:00															Women draw 9 14:00 - 17:00													Men draw 9 19:00 - 22:00											
WEDNESDAY 18				Tie Break W/M (if required) 09:00 - 12:00															Tie Break W/M (if required) 14:00 - 17:00													Tie Break W/M (if required) 19:00 - 22:00											
THURSDAY 19				Semifinals W/M 09:00 - 12:00															Final Bronze W/M 15:00 - 18:00																								
FRIDAY 20				Final Gold W 09:00 - 12:00															Final Gold M 14:00 - 17:00																							*	Closing Parade
SATURDAY 21																																											

* = Curling closing parade takes place immediately after the final.

 Unofficial Training  Official Training  Competition



COMPETITION DATES

9 competition days

Round Robin, tie-breaker(s) (if required), Semi Finals, Medal Games

Winter Universiade Curling Competition Trentino 2013 Baselga di Pinè - 10 - 20 December 2013								
Date	Time	Session	Sheet A	Sheet B	Sheet C	Sheet D	Sheet E	
Tue 10 Dec.	09:00	w	ita	can	kor	rus	gbr	
	10:45	M	KOR	CHN	ITA	NOR	USA	
	13:15	M	CAN	GBR	SUI	SWE	CZE	
	15:00	w	jpn	sui	usa	swe	chn	
	17:00	M/w	TEAM MEETING					
	17:30		TEAM CAPTAINS MEETING					
Wed 11 Dec.	08:30	w	jpn	usa	sui	chn	swe	
	10:15	M	GBR	CAN	SUI	CZE	SWE	
	12:30	M	KOR	ITA	CHN	USA	NOR	
	14:15	w	can	ita	kor	gbr	rus	
	18:00	M/w	UNIVERSIADE OPENING CEREMONY					
Thu 12 Dec.	09:00	w1	usa - sui	chn - swe	gbr - rus	can - ita	jpn - kor	
	13:30	M/w	CURLING OPENING PARADE					
	14:00	M1	ITA - CHN	USA - NOR	CZE - SWE	GBR - CAN	KOR - SUI	
	19:00	w2	swe - can	sui - ita	jpn - usa	kor - rus	chn - gbr	
Fri 13 Dec.	09:00	M2	NOR - GBR	CHN - CAN	KOR - ITA	SUI - SWE	USA - CZE	
	14:00	w3	rus - chn	usa - kor	sui - can	gbr - jpn	swe - ita	
	19:00	M3	SWE - USA	ITA - SUI	CHN - GBR	CZE - KOR	NOR - CAN	
Sat 14 Dec.	09:00	w4	ita - jpn	gbr - can	kor - swe	rus - usa	sui - chn	
	14:00	M4	CAN - KOR	CZE - GBR	SUI - NOR	SWE - ITA	CHN - USA	
	19:00	w5	gbr - swe	jpn - sui	usa - ita	chn - kor	can - rus	

Winter Universiade Curling Competition Trentino 2013 Baselga di Pinè - 10 - 20 December 2013								
Date	Time	Session	Sheet A	Sheet B	Sheet C	Sheet D	Sheet E	
Sun 15 Dec.	09:00	M5	CZE - NOR	KOR - CHN	ITA - CAN	USA - SUI	GBR - SWE	
	14:00	w6	jpn - rus	swe - usa	can - chn	ita - gbr	kor - sui	
	19:00	M6	KOR - SWE	NOR - ITA	GBR - USA	CAN - CZE	SUI - CHN	
Mon 16 Dec.	09:00	w7	chn - ita	kor - gbr	rus - sui	jpn - swe	usa - can	
	14:00	M7	USA - CAN	SUI - CZE	SWE - CHN	KOR - NOR	ITA - GBR	
	19:00	w8	sui - gbr	can - jpn	ita - kor	usa - chn	rus - swe	
Tue 17 Dec.	09:00	M8	CHN - CZE	GBR - KOR	CAN - SUI	ITA - USA	SWE - NOR	
	14:00	w9	can - kor	ita - rus	chn - jpn	swe - sui	gbr - usa	
	19:00	M9	GBR - SUI	CAN - SWE	USA - KOR	NOR - CHN	CZE - ITA	
Wed 18 Dec.	09:00	M/w	Tie-Breaker Games if required					
	14:00	M/w	Tie-Breaker Games if required					
	19:00	M/w	Tie-Breaker Games if required					
Thu 19 Dec.	09:00	M/w	Semifinals Men and Women					
	15:00	M/w	Bronze Medal Men and Women					
Fri 20 Dec.	09:00	w	Gold Medal Game - Women					
	14:00	M	Gold Medal Game - Men					
		M/w	MEDAL CEREMONIES and CLOSING PARADE (after End of Men's Gold Medal Game)					

Teams toss for first or second practice in the first game

Practice on Friday, 10 and 11 December will be 15 minutes on each sheet (controlled by the umpires)

DAY BY DAY PROGRAM

Day by Day - Curling - Baselga di Pinè			
Date	Time	Activity	Location
Dec. 08	14:00	First CTI - UH meeting	Hotel Lagorai
Dec. 10	09:00 - 10:15	Off. Tr W - Practice Session 1 ita can kor rus gbr	Ice Rink Pinè Stadium Sheet A Sheet B Sheet C Sheet D Sheet E
	10:45 - 12:00	Off. Tr M - Practice Session 1 KOR CHN ITA NOR USA	Ice Rink Pinè Stadium Sheet A Sheet B Sheet C Sheet D Sheet E
	13:15 - 14:30	Off. Tr M - Practice Session 2 CAN GBR SUI SWE CZE	Ice Rink Pinè Stadium Sheet A Sheet B Sheet C Sheet D Sheet E
	15:00 - 16:15	Off. Tr W - Practice Session 2 jpn sui usa swe chn	Ice Rink Pinè Stadium Sheet A Sheet B Sheet C Sheet D Sheet E
	17:00 - 18:00	1st Technical Committee Meeting	Centro Congressi Baselga di Pinè
	18:00 - 19:00	1st Captains Meeting	Centro Congressi Baselga di Pinè
Dec. 11	08:30 - 09:45	Off. Tr W - Practice Session 1 jpn usa sui chn swe	Ice Rink Pinè Stadium Sheet A Sheet B Sheet C Sheet D Sheet E
	10:15 - 11:30	Off. Tr M - Practice Session 1 GBR CAN SUI CZE SWE	Ice Rink Pinè Stadium Sheet A Sheet B Sheet C Sheet D Sheet E
	12:30 - 13:45	Off. Tr M - Practice Session 2 KOR ITA CHN USA NOR	Ice Rink Pinè Stadium Sheet A Sheet B Sheet C Sheet D Sheet E

Day by Day - Curling - Baselga di Pinè			
Date	Time	Activity	Location
Dec. 11	14:15 - 15:30	Off. Tr W - Practice Session 2 can ita kor gbr rus	Ice Rink Pinè Stadium Sheet A Sheet B Sheet C Sheet D Sheet E
Dec. 12	09:00 - 12:00	Competition: Women Draw 1 usa - sui chn - swe gbr - rus can - ita jpn - kor	Ice Rink Pinè Stadium Sheet A Sheet B Sheet C Sheet D Sheet E
	13:30 - 14:00	Curling Opening Parade	Ice Rink Pinè Stadium
	14:00 - 17:00	Competition: Men Draw 1 ITA - CHN USA - NOR CZE - SWE GBR - CAN KOR - SUI	Ice Rink Pinè Stadium Sheet A Sheet B Sheet C Sheet D Sheet E
Dec. 13	19:00 - 22:00	Competition: Women Draw 2 swe - can sui - ita jpn - usa kor - rus chn - gbr	Ice Rink Pinè Stadium Sheet A Sheet B Sheet C Sheet D Sheet E
	09:00 - 12:00	Competition: Men Draw 2 NOR - GBR CHN - CAN KOR - ITA SUI - SWE USA - CZE	Ice Rink Pinè Stadium Sheet A Sheet B Sheet C Sheet D Sheet E
	14:00 - 17:00	Competition: Women Draw 3 rus - chn usa - kor sui - can gbr - jpn swe - ita	Ice Rink Pinè Stadium Sheet A Sheet B Sheet C Sheet D Sheet E
	19:00 - 22:00	Competition: Men Draw 3 SWE - USA ITA - SUI CHN - GBR CZE - KOR NOR - CAN	Ice Rink Pinè Stadium Sheet A Sheet B Sheet C Sheet D Sheet E

Day by Day - Curling - Baselga di Pinè			
Date	Time	Activity	Location
Dec. 14	09:00 - 12:00	Competition: Women Draw 4 ita - jpn gbr - can kor - swe rus - usa sui - chn	Ice Rink Pinè Stadium Sheet A Sheet B Sheet C Sheet D Sheet E
	14:00 - 17:00	Competition: Men Draw 4 CAN - KOR CZE - GBR SUI - NOR SWE - ITA CHN - USA	Ice Rink Pinè Stadium Sheet A Sheet B Sheet C Sheet D Sheet E
	19:00 - 22:00	Competition: Women Draw 5 gbr - swe jpn - sui usa - ita chn - kor can - rus	Ice Rink Pinè Stadium Sheet A Sheet B Sheet C Sheet D Sheet E
Dec. 15	09:00 - 12:00	Competition: Men Draw 5 CZE - NOR KOR - CHN ITA - CAN USA - SUI GBR - SWE	Ice Rink Pinè Stadium Sheet A Sheet B Sheet C Sheet D Sheet E
	14:00 - 17:00	Competition: Women Draw 6 jpn - rus swe - usa can - chn ita - gbr kor - sui	Ice Rink Pinè Stadium Sheet A Sheet B Sheet C Sheet D Sheet E
	19:00 - 22:00	Competition: Men Draw 6 KOR - SWE NOR - ITA GBR - USA CAN - CZE SUI - CHN	Ice Rink Pinè Stadium Sheet A Sheet B Sheet C Sheet D Sheet E
Dec. 16	09:00 - 12:00	Competition: Women Draw 7 chn - ita kor - gbr rus - sui jpn - swe usa - can	Ice Rink Pinè Stadium Sheet A Sheet B Sheet C Sheet D Sheet E
	14:00 - 17:00	Competition: Men Draw 7 USA - CAN SUI - CZE SWE - CHN KOR - NOR ITA - GBR	Ice Rink Pinè Stadium Sheet A Sheet B Sheet C Sheet D Sheet E

Day by Day - Curling - Baselga di Pinè			
Date	Time	Activity	Location
Dec. 16	19:00 - 22:00	Competition: Women Draw 8 sui - gbr can - jpn ita - kor usa - chn rus - swe	Ice Rink Pinè Stadium Sheet A Sheet B Sheet C Sheet D Sheet E
Dec. 17	09:00 - 12:00	Competition: Men Draw 8 CHN - CZE GBR - KOR CAN - SUI ITA - USA SWE - NOR	Ice Rink Pinè Stadium Sheet A Sheet B Sheet C Sheet D Sheet E
	14:00 - 17:00	Competition: Women Draw 9 can - kor ita - rus chn - jpn swe - sui gbr - usa	Ice Rink Pinè Stadium Sheet A Sheet B Sheet C Sheet D Sheet E
	19:00 - 22:00	Competition: Men Draw 9 GBR - SUI CAN - SWE USA - KOR NOR - CHN CZE - ITA	Ice Rink Pinè Stadium Sheet A Sheet B Sheet C Sheet D Sheet E
Dec. 18	09:00 - 12:00	Competition: Tie-breaker Games M/W (if required)	Ice Rink Pinè Stadium
	14:00 - 17:00	Competition: Tie-breaker Games M/W (if required)	Ice Rink Pinè Stadium
	19:00 - 22:00	Competition: Tie-breaker Games M/W (if required)	Ice Rink Pinè Stadium
	20:00	Final CTI-UH Meeting (followed by CTI reception)	San Bartolameo
Dec. 19	09:00 - 12:00	Competition: Semi Finals M/W	San Bartolameo
	15:00 - 18:00	Competition: Bronze Medal Games M/W	Ice Rink Pinè Stadium
Dec. 20	09:00 - 12:00	Competition: Gold Medal Game W	Ice Rink Pinè Stadium
	14:00 - 17:00	Competition: Gold Medal Game M	Ice Rink Pinè Stadium
	17:00	Medal Ceremony W/M	Ice Rink Pinè Stadium
	17:15	Curling Closing Parade	Ice Rink Pinè Stadium

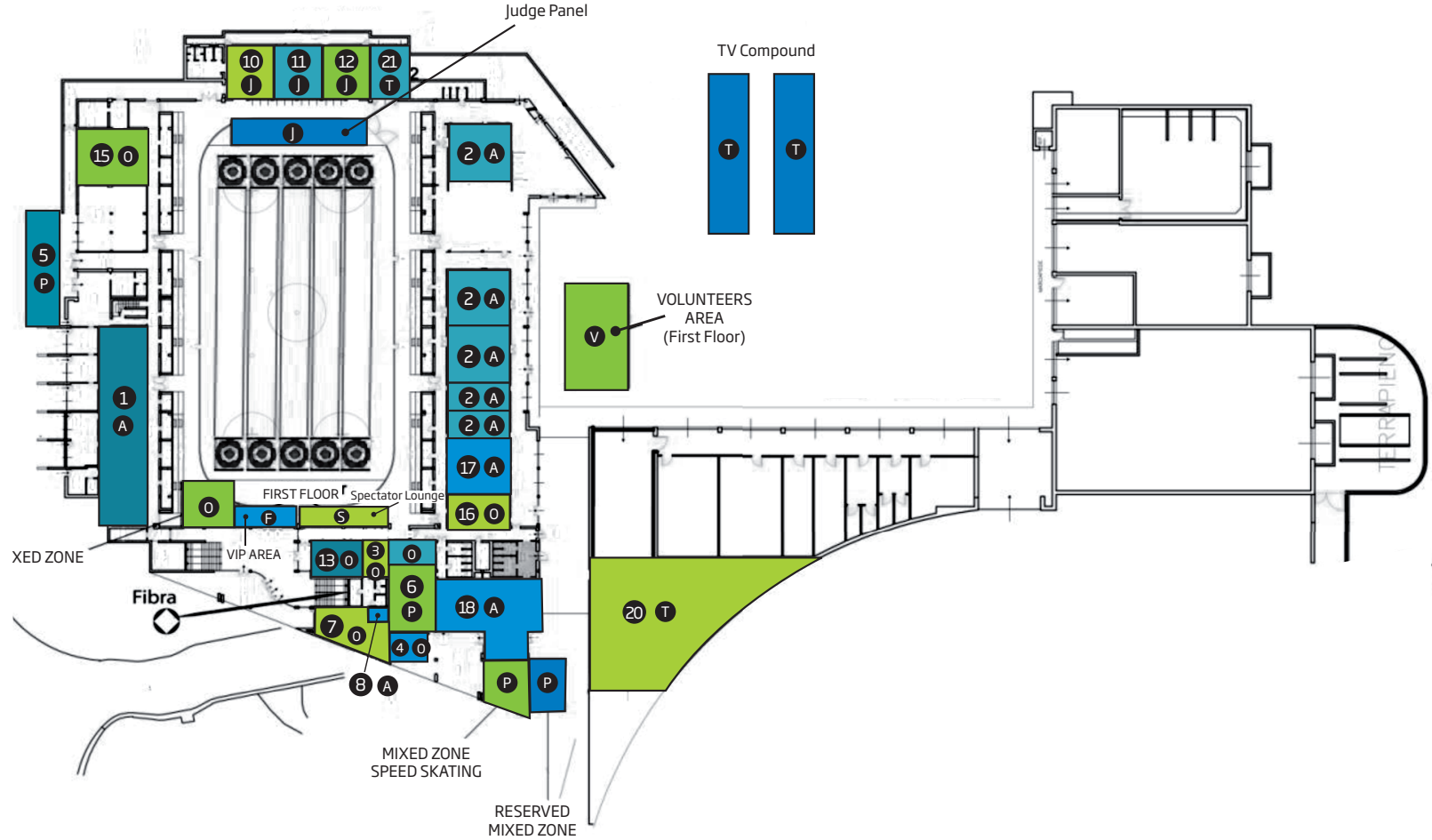
Legend	
Technical or CTI meetings & TCM	Competition
Opening & Closing Parade	Medal Ceremony
Official Training	



Baselga di Piné - ICE RINK

- ① Curling dressing room
- ② SS dressing room
- ③ TD Room curling
- ④ TD Room SS
- ⑤ Press area
- ⑥ Press room
- ⑦ Venue Office
- ⑧ Competition Office Curling
- ⑨ Competition Office SS
- ⑩ Chief Umpire
- ⑪ Referees Area
- ⑫ Ice Technicians
- ⑬ Swiss Timing OVR Curling
- ⑭ Swiss Timing SS + Referees
- ⑮ Swiss Timing Storage
- ⑯ First AID
- ⑰ Doping Control
- ⑱ Athletes Lounge
- ⑲ VIP/FISU Family Lounge
- ⑳ Ice Machine SS
- ㉑ Ice Machine Curling

- Ⓐ Athletes
- Ⓕ FISU/VIP
- ⓪ O.C
- Ⓜ Judges & Referees
- Ⓝ Spectators
- Ⓣ Technical Room
- Ⓥ Volunteers
- Ⓟ Press

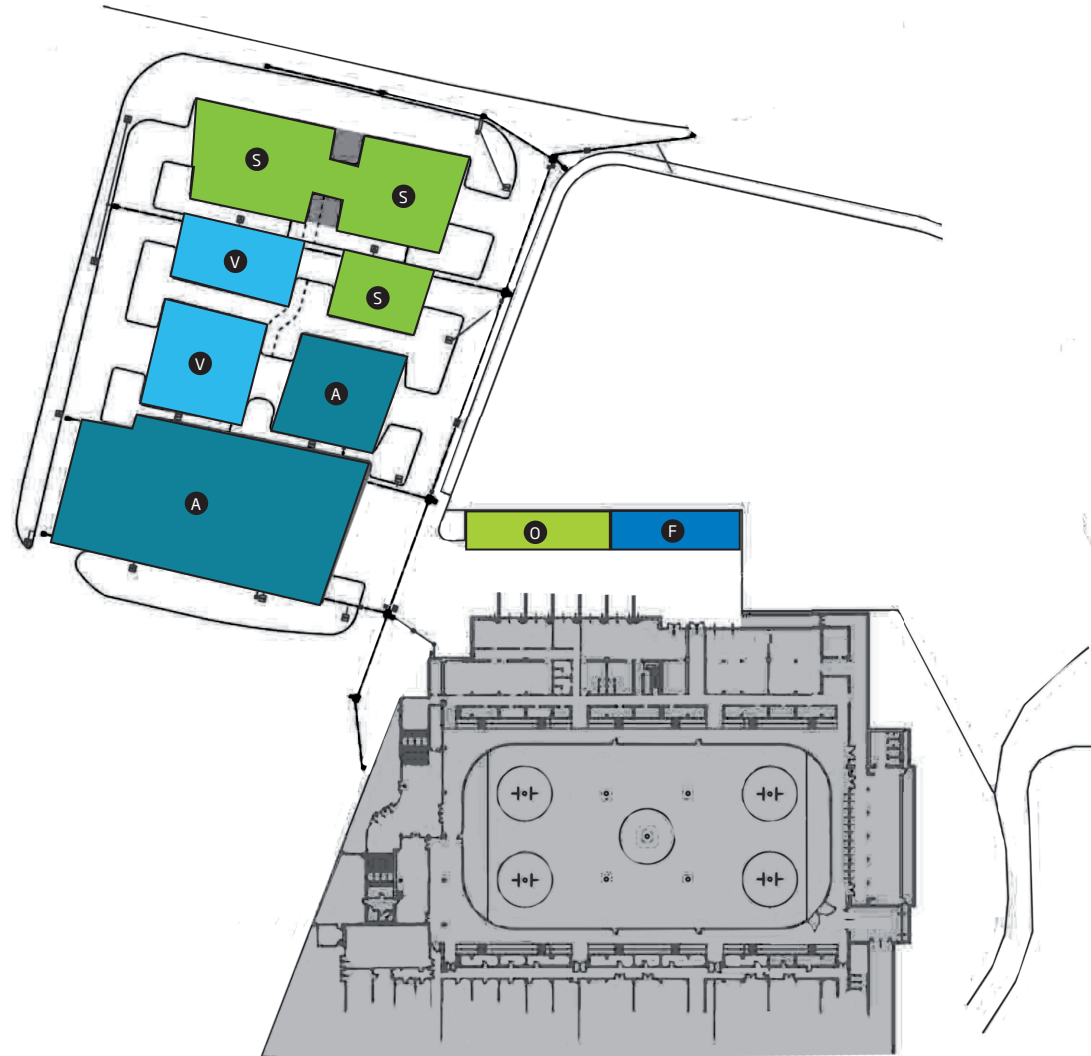




Baselga di Piné - PARKING

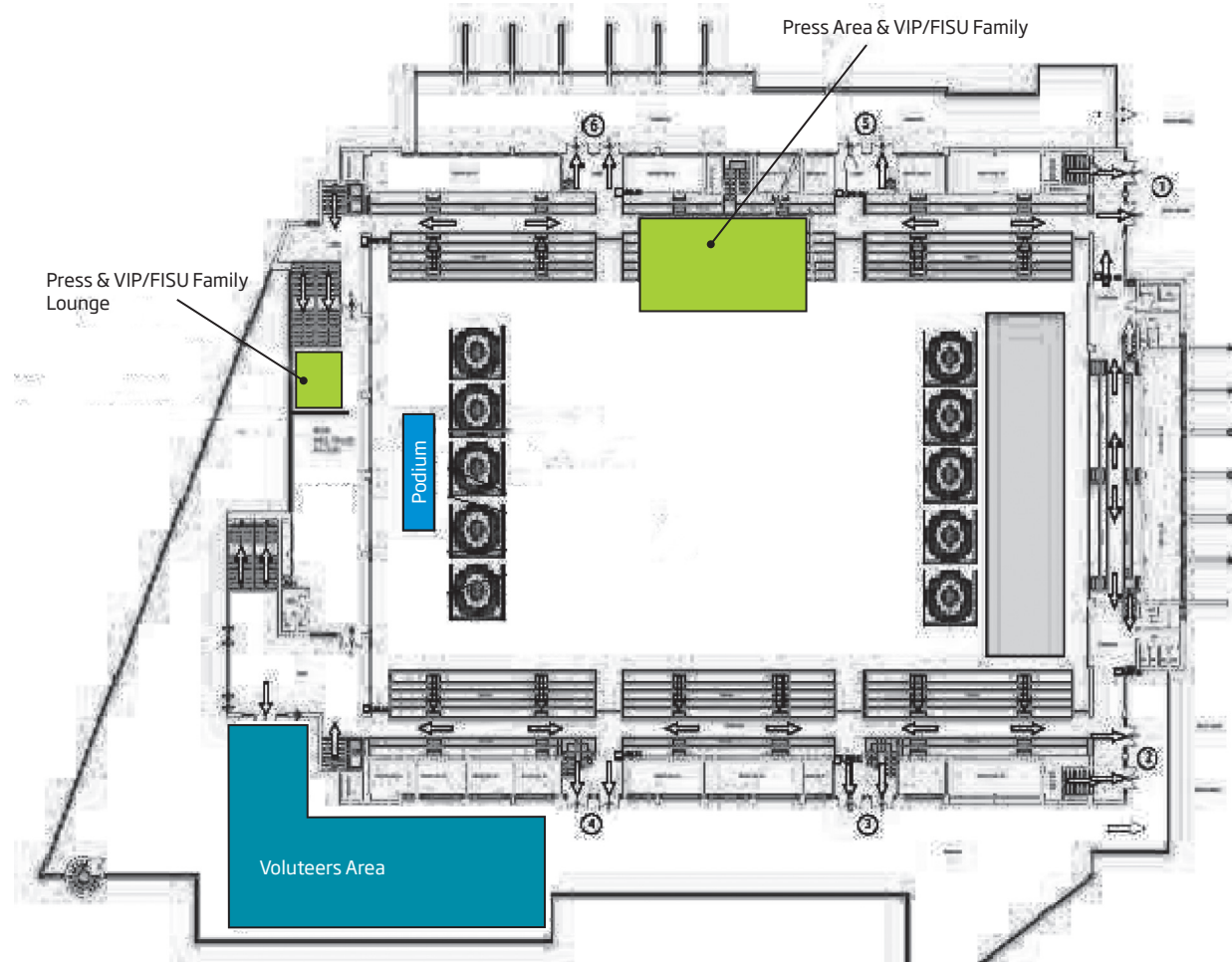
PARKING AREAS

- A** Athletes - Teams
- F** FISU/VIP
- O** O.C
- S** Spectators
- V** Volunteers





Baselga di Piné - SPECTATORS





An authentic
visual
experience
in Trentino.

Get a taste for authentic experiences, at the best time of year. Trentino has over 800 km of ski runs served by state-of-the-art ski lifts and there's no end of exciting things to do for sports enthusiasts: downhill skiing, cross-country skiing, snowboarding, ski mountaineering, snowshoeing... But more importantly, as well as the best snow, Trentino has lots of features that make it unique: unspoiled nature, the silence of footpaths through the woods, the warmth of an evening in a refuge and the discovery of new ones enchanting villages with their Christmas markets. Book your holiday now on visittrentino.it


TRENTINO
peak experience

INSPIRED BY YOU



www.visittrentino.it/it/arrivare



Car: Brennero - Modena (A22) Motorway



Airplane: Verona, Bergamo, Milano or Venezia Airports



Train: Trento Train Station

Follow us on
www.universiadetrentino.org

...and on social network

