

# Long Sutton Ward Profile

The Long Sutton ward boasts one of South Holland's traditional market towns, located in the east of the district. The ward is divided by the main A17 and is known for its Church with lead covered wooden spire, Butterfly and Wildlife Park and the historic market place.

The ward is one of 18 wards within South Holland District.



---

## Democratic Information

The [councillors](#) for the ward are Simon Booth, Dennis Tennant and David Wilkinson. The local MP for South Holland and The Deepings is John Hayes (Conservative).

---

## Population (source: 2001 Census)

In the 2001 Census the total population of this ward was 6,461 people. The population of the District was 76,522 people. Since 2001 the population of the District has increased to 84,600 (source: ONS 2010 Population Estimates) and by 2015 the district population is projected to rise to 92,900. The average age of someone living in Long Sutton is 46.3 years, compared with an average of 42.8 years in the District and 38.6 years in England and Wales.

- 15.4% of the population are under 16 years of age, compared with an average across the District of 17.9% and 20.2% in England and Wales.
- 57.3% of the population are aged 16 to 64 years
- 27.3% are aged 65 and over.

17.8% of the population are pensioners living alone and 3.4% are lone parent households. The average household size is 2.2 people.

---

## Towns and Villages within this ward:

- Long Sutton
- Little Sutton
- Lutton
- Lutton Garnsgate
- Tydd St Mary
- Tydd Gote

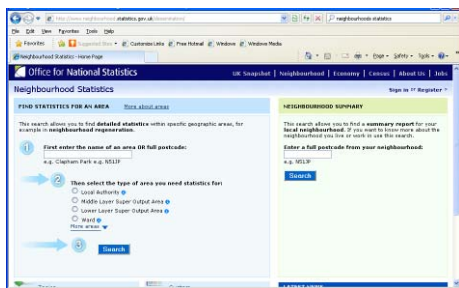


### How to find up to date information about this neighbourhood

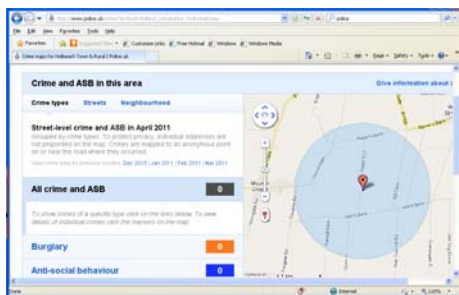
Preliminary information from the 2011 Census will only become available in 2012 and the final Census release with district and ward level information will become available throughout 2013-4. Much of the 2001 Census data is now out of date, although it remains an official source and a basis for estimates.

More up to date facts and figures about the ward are available through the following online resources:

The Lincolnshire Research Observatory (LRO) has an [area profile](#) facility that draws together information from Lincolnshire PCT, the police and other official sources. This provides an in depth and detailed statistical overview for wards throughout the district and across Lincolnshire. A mapping facility provides an opportunity to make comparisons with other districts.

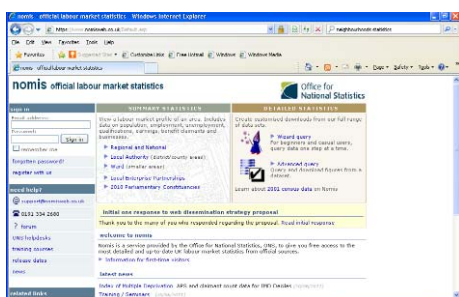
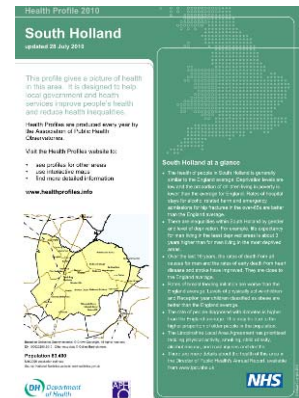


[Neighbourhood Statistics](#) provides information about people, health, work, education, housing, crime and the environment. A neighbourhood summary can be produced through using a postcode search



The police [crime mapping facility](#) can be used to find out more about crime in a neighbourhood through using the postcode search facility. Crime maps, advice and information about neighbourhood policing are all available through this site.

A [Health Profile for South Holland](#) is produced annually by the Association of Public Health Observatories. The profile provides information about health inequalities, deprivation, obesity, smoking and other health related topics. This information relates to the South Holland district rather than wards, although [Area profiles](#) provided by the LRO enable analysis by middle layer super output areas within the district.



[Nomisweb](#) provides official labour market statistics such as unemployment rates, claimant count, jobs vacancies and other claimant information from the Department for Work and Pensions

A new [Government Data](#) website provides local and national data across many subjects through a postcode search.

[My Lincolnshire](#) provides immediate geographic information according to postcodes, including nearest schools, doctors surgeries, recycling centres, libraries and other local information. [My Collections](#) can be used to identify refuse and recycling collection days within this ward and throughout South Holland.

Secondary school league tables showing GCSE attainment between 2005 and 2010 are available by ward and district through the [Department of Education](#). Up to date information about schools in South Holland can be found at the government's [Schoolscope](#) website.

---

## Parks and Open Spaces

Long Sutton is well provide for in terms of play space and has 106% of the NPFA (National Playing Fields Association) recommendation (Source: SHDC Annual Monitoring Report 2008).

Total Amount of Play Area	% of NPFA Recommendation	Total Youth/Adult Space	% of NPFA Recommendation	Total Children's Play Space	% of NPFA Recommendation
12.53 ha	106%	10.0 ha	114-129%	2.5 ha	63-85%

---

## Employment, Business and Local Economy

In the 2001 Census 56.25% of residents in Long Sutton were employed compared with 61.7% in South Holland. Unemployment was 2.1% in this ward compared with 1.4% in South Holland.

More recent figures show that there were 80 persons in this ward who were registered as unemployed and claiming Job Seekers Allowance (Nomis, June 2011), compared with 1,486 in South Holland.

A weekday market takes place in Long Sutton every Friday. The traditional market town is also home to a number of shops and Premier Foods plc, the largest food cannery processing plant in Europe. In total there were 172 businesses registered for non domestic rates in this ward, (Source: SHDC valuation list July 2009, excluding business sites that do not employ people, such as telecommunication sites, advertising hoardings and water treatment works).

The South Holland [Local Plan](#) that was adopted in July 2006 outlines planning policies until 2021. In 2007 the Spalding Masterplan was produced. This research looked at the development of Spalding and how competitiveness could be improved in South Holland over the next 20 years. A detailed report was produced with a vision for the town in terms of transport, shopping facilities, improvement of leisure and tourism and regeneration of redundant areas in the town centre, etc.

---

## Housing (source: 2001 Census)

In the 2001 Census, 78.9% of the housing in this Ward was owner-occupied. 13.7% of the population lived in social rented housing and 7.4% lived in private rented housing.

Tenure	Long Sutton	South Holland	England & Wales
Owner occupied – owns outright	44.2%	38.2%	29.5%
Owner occupied – owns with a mortgage / loan	34.2%	38.1%	38.8%
Owner occupied – shared ownership	0.5%	0.9%	0.6%
Social rented	13.7%	14.1%	19.2%
Private rented	7.4%	8.6%	11.9%

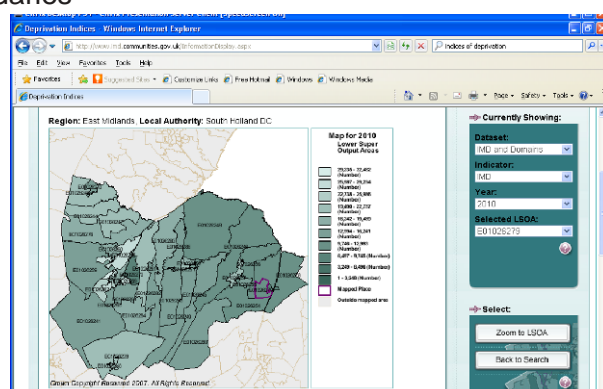
Source: Census 2001

Since 2001, 4,604 homes have been built across South Holland, including 474 affordable homes since 2004. The Peterborough Sub Regional Strategic Housing Market Assessment that was carried out in 2010, showed that 2.6% of the households in South Holland were overcrowded, with overcrowding being the greatest problem in social rented homes. The assessment also estimated that 587 additional affordable homes were needed on an annual basis across the district to meet the demand for affordable housing in the future.

### Indices of Multiple Deprivation, updated 2010

The most recent deprivation statistics are based on areas which are smaller than wards known as Super Output Areas (SOA). There are 48 SOA's in South Holland although it should be noted that the boundaries for super output areas differ from ward boundaries

There are seven domains of deprivation; income, employment, health and disability, education, housing, crime and living environment. The full results for the SOA's within this ward are available through a map and report at the [Communities and Local Government](http://www.communities.gov.uk) website



There are 32,482 SOA's in England. The SOA with a rank of 1 is the most deprived and 32,482 is the least deprived.

### Education

34.5% of the population aged 16 to 74 years have no qualifications, compared with 39% in the District and 29% in England and Wales. (source: 2001 Census)

<b>Secondary School Attainment 2010</b>	<b>5+A*-C (and equivalent)</b>	<b>% of 15 year olds achieving Level 2 including English and Maths – 2008</b>
George Farmer Technology and Language College	47%	91%
The Glead Boys' School	27%	43%
The Glead Girls' Technology College	51%	67%
The Peele Community College	58%	59%
Spalding Grammar School	99%	100%
Spalding High School	95%	95%
The St Guthlac School	44%	50%
Thomas Cowley High School	51%	54%
<b>Local Education Authority Average</b>	<b>59.2%</b>	<b>65.3%</b>
<b>England State Funded Average</b>	<b>55.5%</b>	<b>59.4%</b>

## Health (source: 2001 Census)



23.0% of the population have a limiting long term illness compared with 19.6% in the District. According to the Place Survey 2008, 90% of residents in this ward were satisfied or very satisfied with their local GP (compared with 78.7% in South Holland), although only 48% of residents were satisfied or very satisfied with their local dentist (compared with 67.48% in South Holland).

The life expectancy of males living in Long Sutton is 77.4 years of age, female life expectancy in Long Sutton is 80.2 years of age (source: 2001 Census).

	Long Sutton	South Holland	England
<b>People who have a limiting long term illness</b>	23.0%	19.6%	18.2%
<b>People who are not in good health</b>	11.4%	9.3%	9.2%

Source: Census 2001

## Transport (source: 2001 Census)

34.6% of households have more than one car, compared with an average of 39% in the District and 29.4% in England and Wales. 16.0% of households don't have a car or van. According to the Place Survey in 2008, 62.3% of residents within this ward were satisfied with their local buses (compared with 48.03% in South Holland) and 45.70% were satisfied with local transport information (compared with 41.35% in South Holland).

## Police, Crime and Disorder

The non emergency number for Lincolnshire police is 0300 111 0300. South Holland falls within the South Division of Lincolnshire Police. South Division is divided into six neighbourhood policing areas each of which is served by a Neighbourhood Beat Manager. The [postcode finder](#) can be used to identify and contact neighbourhood policing staff, either by email or mobile telephone. Crime prevention information is through the [Lincolnshire Police website](#)



Crime can be reported to Lincolnshire police on the above number or through [Crimestoppers](#)

Crime rates within South Holland are lower than those in Lincolnshire and across the East Midlands. Lincolnshire Police work in partnership across the district to continue to make South Holland a safe place to live. In the 3 months to March 2011 crime occurred at a rate of 10.55, 9.77 and 10.64 each month crimes per 1,000 people. This equates to approximately 13.6 crimes per days across the whole of South Holland. Burglary, vehicle crime and violence all experienced a decrease, while there was an increase in levels of robbery over the same period.

## Local Media

- Lincolnshire Free Press (weekly newspaper)
- Spalding Guardian (weekly newspaper)
- [BBC Radio Lincolnshire](#) – 104.7 FM
- [Heart FM](#) – 102.7 FM (local radio, formerly Hereward FM)

- [Lincs FM](#) – 102.2 FM (local radio)
  - [Tulip Radio](#) 87.9FM (local radio)
  - [Spaldingtoday.co.uk](#) (news website)
- 

## Feedback

South Holland District Council can be contacted by email through [info@sholland.gov.uk](mailto:info@sholland.gov.uk) or by writing to:  
Customer Services  
Council Offices  
Priory Road  
Spalding  
PE11 2XE



Compliments and suggestions about the ward can be given through the [feedback form](#) on the Council website. Complaints can be made by writing to the above address or electronically through the feedback form.

### Disclaimer

All information is correct at time of publication and originates from official sources. South Holland District Council is not responsible for the content of external websites.