



HERITAGE SERVICES INFORMATION SHEET NUMBER 9

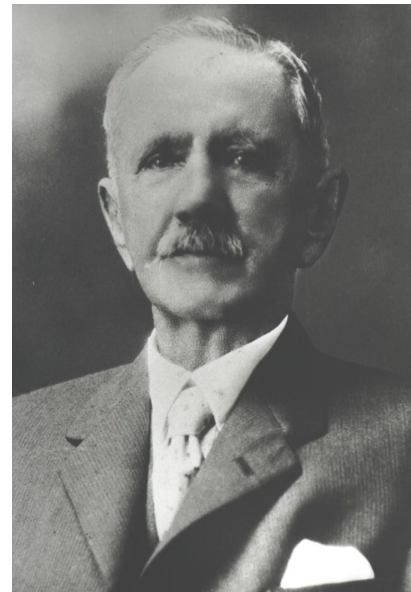
JOSEPH HODEL MLA CHAIRMAN OF THURINGOWA SHIRE

Early Life

Joseph Hodel was born on the Channel Island of Jersey in 1850. He came to Queensland with his parents and siblings in 1863. After working for a few years on a plantation on the Logan River, in 1870 he moved to Townsville with his first wife, Johanna and twin sons. Joseph joined members of his family who were already established in the area. In his early years in Townsville he pursued various trades including baker, confectioner and fruiterer, however by the 1870s he had launched into the hotel business.

Council Achievements

Joseph Hodel became a member of the Thuringowa Divisional Board in 1884. He was a member of the Board for 23 years, serving as Chairman on at least 14 occasions. During his service to the Board, improvements were undertaken in the Thuringowa area that greatly enhanced the region's economy and promoted further settlement.



In his first years on the Board, the Council focused on infrastructure development that included the completion of the causeway (1885) and the construction of the Ross River Bridge (1886). As Chairman he instigated the reconstruction of the Ross River Bridge in 1897; the building of the Stewart Creek Bridge on Alligator Creek Road in 1894; upgrading the sanitation system; and the establishment of the Thuringowa Water Board (1897).

