

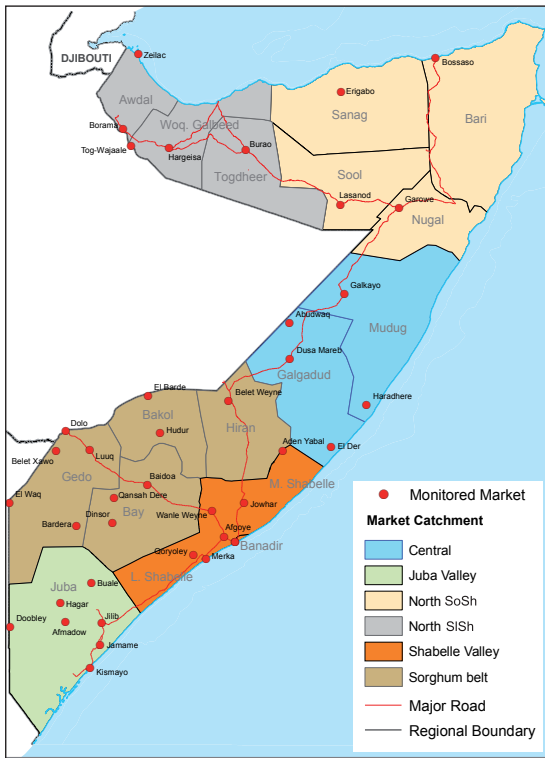
Market Data Update



Food Security and Nutrition Analysis Unit - Somalia



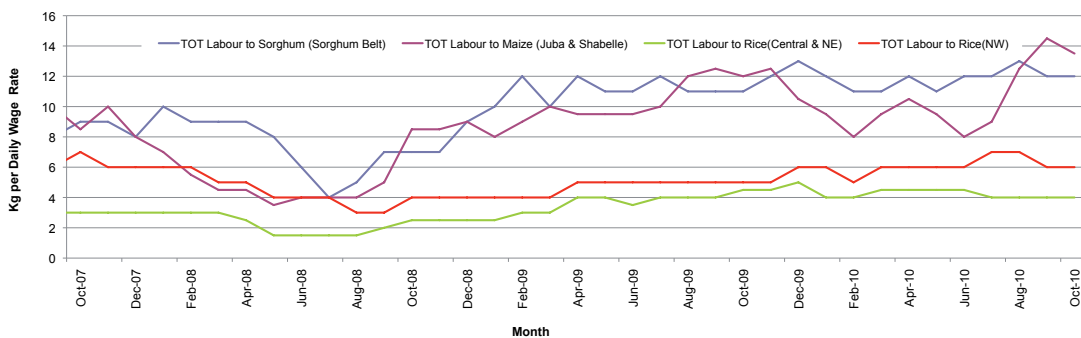
Monthly Market Analysis, October 2010



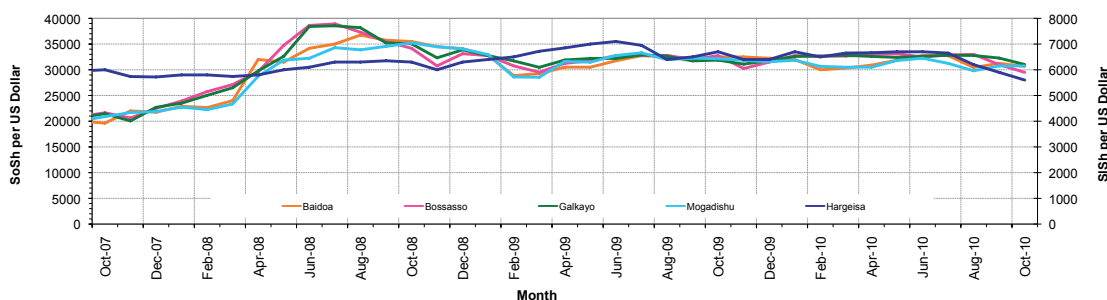
Highlights

- The Consumer Price Index (CPI), which is based on Minimum Basket for Somalia, continued to stabilize in most regions of the country during the month of October 2010. From the previous month, the inflation changed only marginally, increasing by 2-3% in South-Central and decelerating by 1% in the North SoSh and SiSh areas. The relative stability in the CPI is mainly attributable to sorghum, sugar and wheat flour prices dynamics, which together account for a large portion of the cost of the basket in different regions of Somalia (34-43%).
- The prices of locally produced cereals (maize and red sorghum) exhibited mixed trends in October. In particular, maize prices have increased by about 10% in main maize producing southern regions of Juba and Shabelle, and by 4% in Northwest. However, the prices of maize in these regions are lower compared to the same month last year, which is attributable to the good current harvest. Over the last month, the aggregate average sorghum prices have remained stable in Sorghum Belt and Northeast, while increasing slightly in the regions of Juba, Shabelle and Central and falling moderately in Northwest and Banadir. Compared to last year (Oct. '09), sorghum prices remained relatively stable in Sorghum Belt regions but increased in Central (36%) and Banadir (25%). Conversely, the sorghum prices are significantly lower in the Northwest (41%) due to the recent bumper harvest (Oct. '10). On the other hand, prices of most imported commodities remained stable in most reference markets in October 2010, due to increased supply from the main regional ports of entry, after the end of the monsoon season (July-September).
- The relative purchasing power is slightly weaker in October 2010 compared to the previous month in most regions of the country, as indicated by reduced Terms of Trade (ToT) between daily labour wage and cereal (2-8%) resulting from a decrease in labour wage rates (3-16%). Compared to the same month a year ago, the ToT improved in all regions of the South and in Northwest due to decline in cereal prices, while it decreased in Central and Northeast (3-7%) due to higher rice prices and lower labour wage rates. The highest ToT in October 2010 was observed in Shabelle and Juba regions (13-14 kgs cereal for daily wage) while the lowest persisted in Central (3kgs cereal for daily wage).
- In October 2010, both Somali currencies (SoShs and SiShs) appreciated marginally against the US\$ (2-4%) throughout the country. The appreciation is partly attributable to increased remittances following the Ramadan and Iddul Fitri festivities, as well increased foreign exchange earnings from livestock exports during Hajj period.

Relative Purchasing Power for Selected Regions
(Terms of Trade between wage rates and selected cereals)



Monthly Exchange Rate for Selected Regions (SoSh and SiSh to USD)



The FSNAU/FEWSNET Market Data Update is a monthly report that presents a compilation of tabulated graphical market information produced regularly as part of the monthly monitoring process.

The market price data is collected weekly with average monthly values calculated from 45 main markets throughout Somalia covering the period of 1995 to current.

The 5-year period 2003-07 was characterised by fairly stable prices and low inflation. In this bulletin these years are used as a reference period for seasonal trends comparison.

Market analysis is an integral part of all of FSNAU's Annual Food Security Projections and seasonal technical reports (Technical Reports on FSNAU Post Gu and Deyr Analysis).

This data is available on request at the following address, data@fsnau.org

Technical and Managerial Support



Funding Agencies

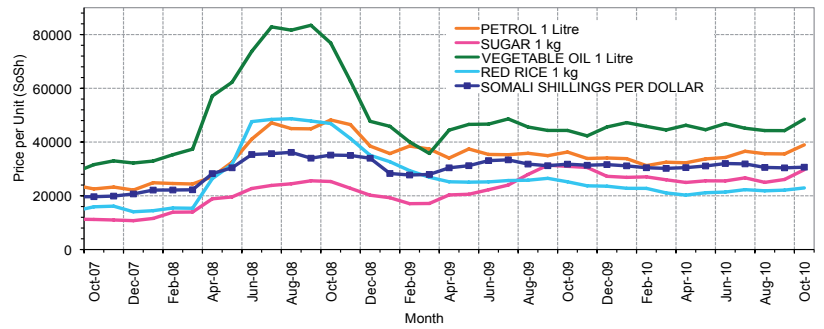


Regional analysis: Juba Regions

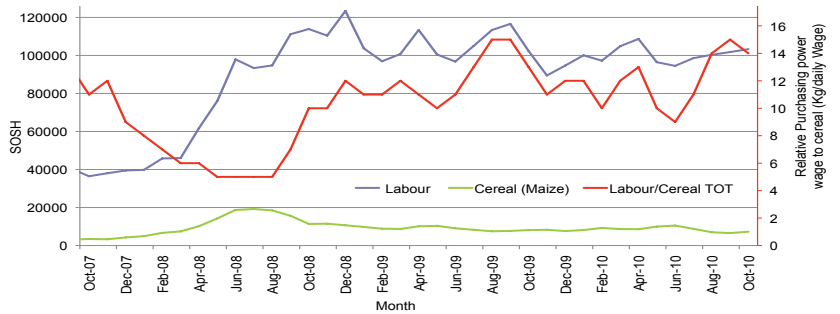
Indicator	5-Year Average	Oct-09	Sep-10	Current Nominal Price	Current Real (Deflated) Price	% Change Same Month Previous Year	% Change Previous Month	% Change 5-year avg (2003-07)
Imported Commodities Prices								
Diesel 1 litre	14,101	30,393	32,536	33,929	16,635	12%	4%	141%
Imported Red Rice 1kg	9,540	25,214	22,107	22,929	11,209	-9%	4%	140%
Petrol 1 litre	16,395	36,286	35,571	38,964	19,118	7%	10%	138%
Sugar	9,014	30,964	26,071	29,714	14,556	-4%	14%	230%
Vegetable Oil 1 litre	20,734	44,321	44,250	48,536	23,839	10%	10%	134%
Wheat Flour 1kg	8,667	21,000	19,500	19,500	9,518	-7%	0%	125%
Wheat Grain 1kg	1,200	16,000	16,000	16,000	7,792	-	0%	1233%
Cereal Prices								
Red Sorghum 1kg	2,228	5,830	9,000	9,500	4,586	63%	6%	326%
White Maize 1kg	2,575	8,107	6,579	7,264	3,483	-10%	10%	182%
Livestock & Livestock Product Prices								
Camel Local Quality (Head)	3,222,545	7,589,000	9,418,750	9,645,834	4,757,502	27%	2%	199%
Cattle Local Quality (Head)	1,688,044	3,446,429	4,585,000	4,341,000	2,141,006	28%	-5%	157%
Fresh Camel Milk 1 litre	6,655	20,479	19,857	21,786	10,945	6%	10%	227%
Goat Export Quality (Head)	425,671	1,049,750	1,402,143	1,393,571	687,249	33%	-1%	227%
Goat Local Quality (Head)	305,365	715,500	910,357	950,000	468,467	33%	4%	211%
Other Essential Items								
Charcoal 50kg	29,236	86,357	88,214	89,464	44,026	4%	1%	205%
Coarseas 1 kg	5,070	20,821	18,793	17,500	8,532	-16%	-7%	245%
Unskilled Labor Wage Rate	36,008	102,321	101,786	103,321	50,861	1%	2%	187%
Firewood Bundle	2,253	6,429	6,571	6,571	3,000	2%	0%	192%
Local Sesame Oil 1 litre	21,379	76,433	73,857	72,536	35,677	-5%	-2%	239%
Exchange Rate (Somali Shilling per USD)	16,071	31,779	30,396	30,650	15,017	-4%	1%	91%
Construction Materials								
Cement 50kg	-	-	352,000	341,000	168,091	-	-3%	-
Cooking Pot Aluminium 7 Litre	-	-	372,708	318,333	158,911	-	-15%	-
Galvanized Iron Sheet Ga 26	-	-	165,571	162,286	79,944	-	-2%	-
Hollow Concrete Block 10cm x 20cm x 40cm	-	-	17,000	16,867	8,121	-	-2%	-
Non Collapsible Jerrycan 10 Litre	-	-	29,000	30,000	14,667	-	0%	-
Plastic Tarpaulin 14m x 5 m	-	-	700,000	700,000	345,160	-	0%	-
Roofing Nails 15kg	-	-	629,286	630,000	409,280	-	0%	-
Timber 2in x 4in x 20ft	-	-	337,350	342,000	168,594	-	1%	-
Women Dry Rashed Blanket 150cm x 200cm	-	-	167,917	120,000	59,087	-	-29%	-
Terms of Trade								
Labour Wage (Daily)/ Cereal (Maize/Kg)	14	13	15	14	15	13%	-8%	2%
Local Goat (Head) Cereal (Maize/Kg)	119	88	138	131	135	48%	-5%	10%
Price Indices								
Consumer Price Index	-	187	197	203	-	8%	3%	-
Purchasing Power Index	-	0.53	0.51	0.49	-	-8%	-3%	-

* Data has been collected for the past 3-4 months only

Imported commodity prices compared to exchange rates

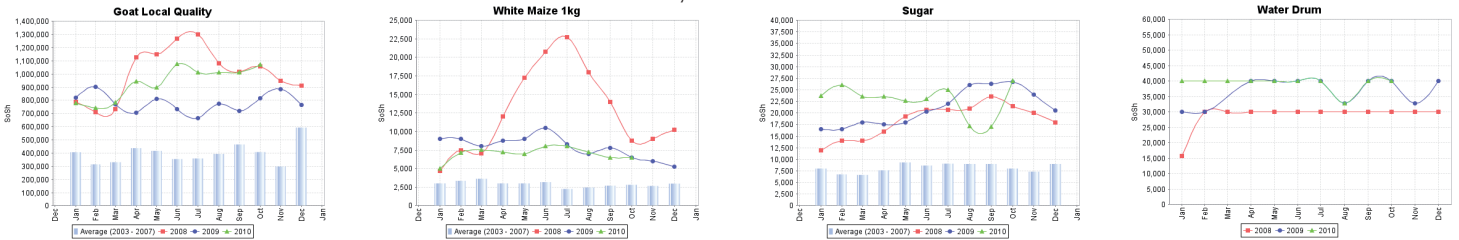


Trends in wage rates, staple cereal prices and relative purchasing power

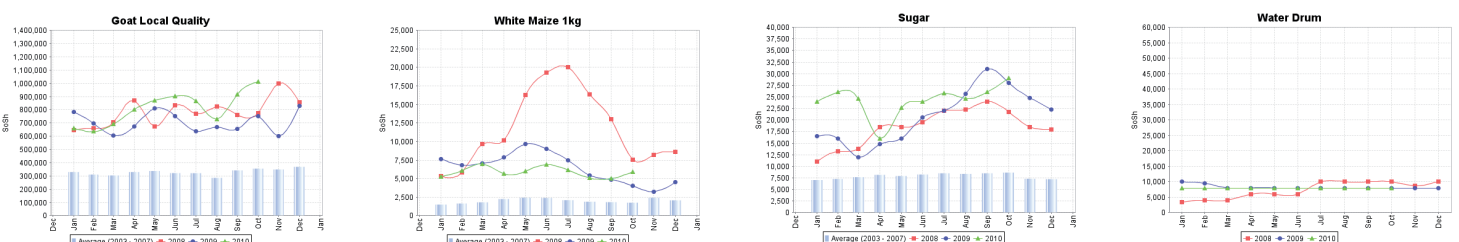


Nominal prices for selected markets

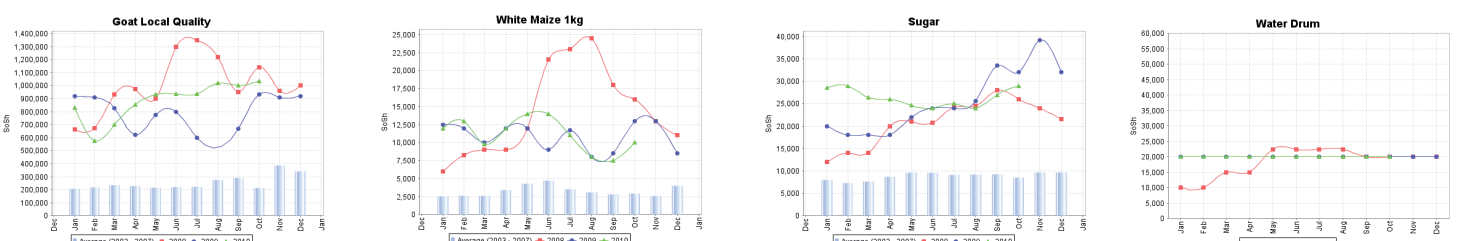
Kismayo Market



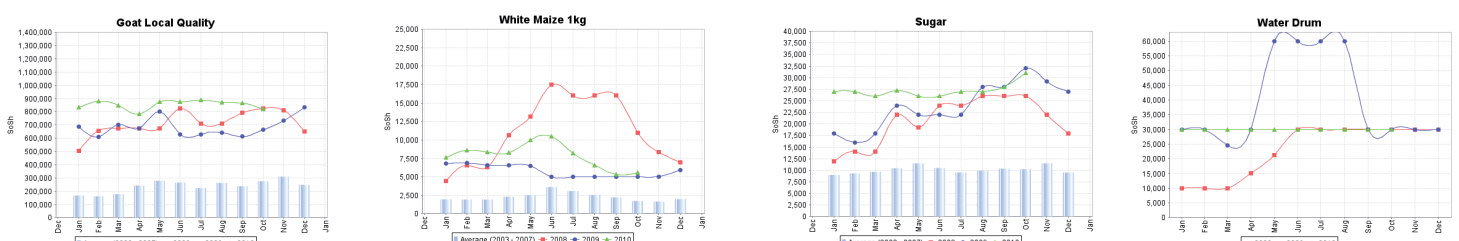
Jamame Market



Afmadow Market



Buale Market



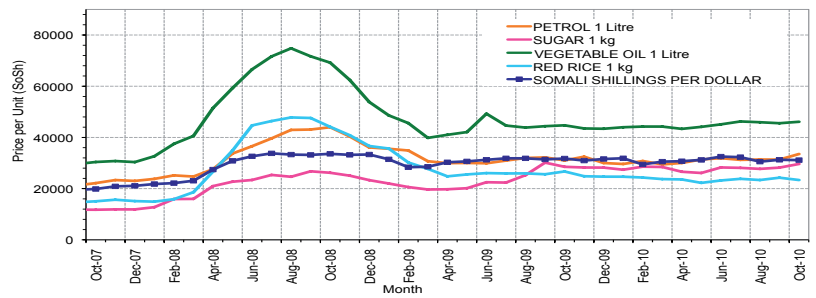
* y axis values for selected markets vary for different commodities

Regional analysis: Sorghum Belt Regions

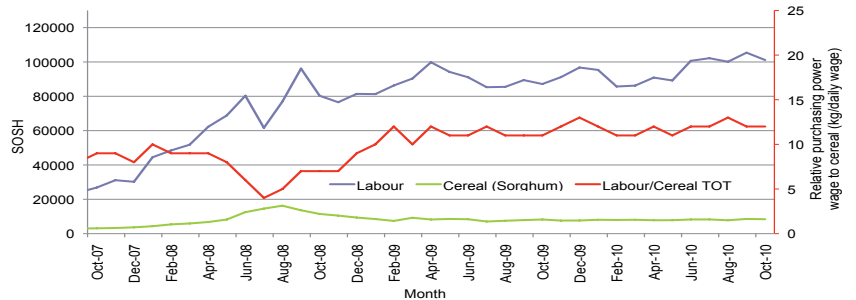
Indicator	5-Year Average	Oct-09	Sep-10	Current Nominal Price	Current Real (Deflated) Price	% Change Same Month Previous Year	% Change Previous Month	% Change 5-year avg (2003-07)
Imported Commodities Prices								
Diesel 1 litre	12,506	30,250	31,795	31,727	15,549	5%	0%	154%
Imported Red Rice 1kg	9,269	26,705	24,273	23,364	11,424	-13%	-4%	152%
Petrol 1 litre	15,053	31,028	31,350	33,523	16,435	8%	7%	123%
Sugar	9,618	28,523	28,205	29,636	14,517	4%	5%	208%
Vegetable Oil 1 litre	19,522	44,727	45,545	46,114	22,645	3%	1%	136%
Wheat Flour 1kg	8,850	22,864	21,841	20,818	10,168	-9%	-5%	135%
Wheat Grain 1kg	3,702	8,500	7,500	9,325	4,499	10%	24%	152%
Cereal Prices								
Red Sorghum 1kg	2,207	8,243	8,573	8,400	4,043	2%	-2%	281%
White Maize 1kg	2,812	11,331	10,555	8,861	4,270	-22%	-16%	215%
Livestock & Livestock Product Prices								
Camel Local Quality (Head)	3,553,346	8,397,222	10,563,636	12,825,882	6,325,894	53%	21%	261%
Cattle Local Quality (Head)	1,464,450	2,356,563	3,489,955	3,344,091	1,649,302	42%	-4%	128%
Fresh Camel Milk 1 litre	8,185	26,175	20,068	23,214	11,350	-11%	16%	184%
Goat Export Quality (Head)	457,537	1,172,955	1,454,091	1,415,455	688,043	21%	-3%	209%
Goat Local Quality (Head)	291,199	700,455	656,384	877,955	432,933	25%	3%	201%
Other Essential Items								
Charcoal 50kg	44,032	112,477	123,818	137,182	67,562	22%	11%	212%
Cowpeas 1 kg	6,512	27,815	21,406	20,813	10,186	-25%	-3%	220%
Unskilled Labour Wage Rate	21,947	87,159	105,409	101,136	49,783	16%	-4%	361%
Firewood Bundle	1,723	5,091	5,136	5,409	2,568	6%	5%	214%
Local Sesame Oil 1 litre	23,268	80,036	75,094	68,656	33,763	-14%	-9%	195%
Exchange Rate (Somali Shilling per USD)	16,297	31,768	31,263	31,142	15,280	-2%	0%	91%
Construction Materials								
Cement 50kg	-	-	356,200	323,575	159,496	-	-9%	-
Cooking Pot Aluminium 7 Litre	-	-	395,778	365,556	180,200	-	0%	-
Galvanised Iron Sheet Gal Z8	-	-	169,900	204,500	100,765	-	21%	-
Hollow Concrete Block 10cm x 20cm x 40cm	-	-	9,625	10,000	4,832	-	4%	-
Non Collapsible Jerrycan 10 Litre	-	-	51,182	50,727	24,920	-	-1%	-
Plastic Tarpaulin 14m x 5 m	-	-	300,950	354,100	174,520	-	7%	-
Roofing Nails 15kg	-	-	825,250	865,875	426,974	-	5%	-
Timber 2in x 4in x 20ft	-	-	282,857	272,857	134,481	-	-4%	-
Woven Dry Rashed Blanket 150cm x 200cm	-	-	129,000	126,750	62,417	-	-2%	-
Terms of Trade								
Labour Wage (Daily) / Cereal (Sorghum/Kg)	10	11	12	12	12	14%	-2%	21%
Local Goat (Head) / Cereal (Sorghum/Kg)	132	85	100	105	107	23%	5%	-21%
Price Indices								
Consumer Price Index	-	187	197	203	-	8%	3%	-
Purchasing Power Index	-	0.53	0.51	0.49	-	-8%	-3%	-

* Data has been collected for the past 3-5 months only
 * Data has been collected for the past 3 - 4 months only

Imported commodity prices compared to exchange rates

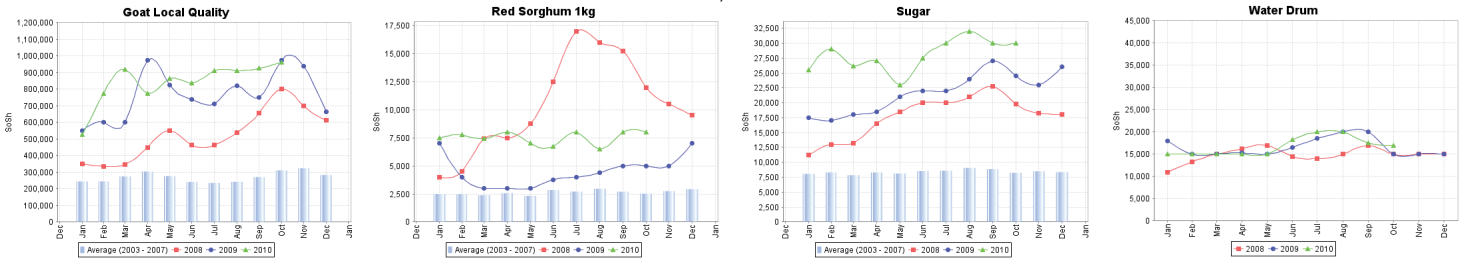


Trends in wage rates, staple cereal prices and relative purchasing power

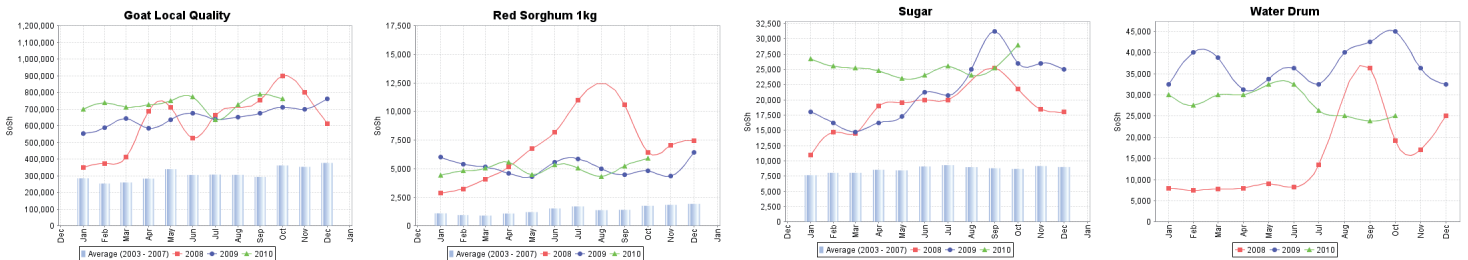


Nominal prices for selected markets

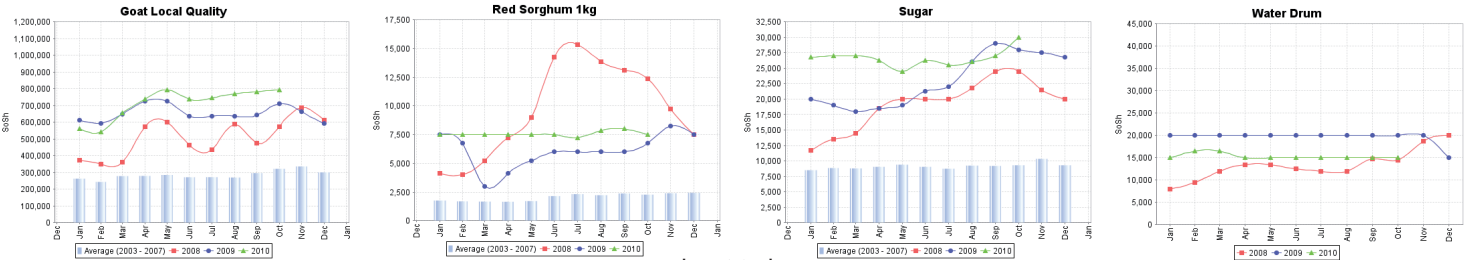
Beletweyne Market



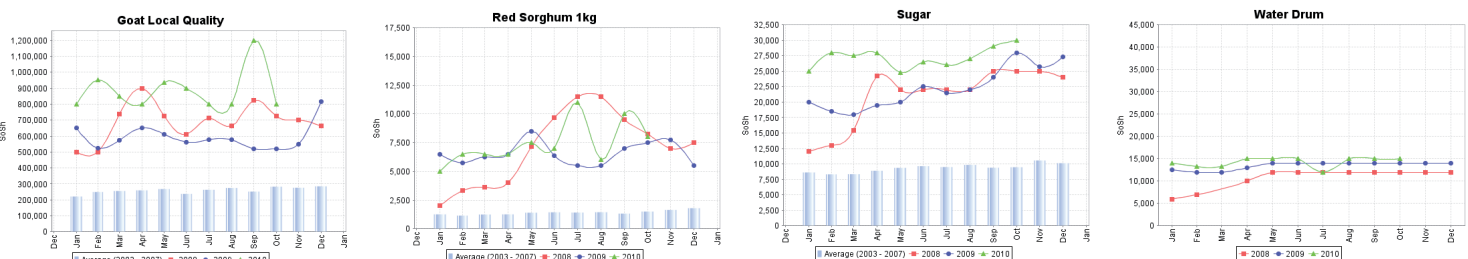
Baidoa Market



Hudur Market



Bardera Market



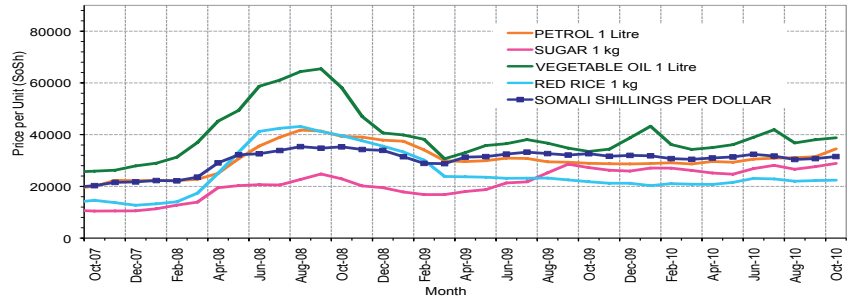
Regional analysis: Shabelle Regions

Indicator	5-Year Average	Oct-09	Sep-10	Current Nominal Price	Current Real (Deflated) Price	% Change Same Month Previous Year	% Change Previous Month	% Change 5-year avg (2003-07)
Imported Commodities Prices								
Diesel 1 litre	10,572	27,667	30,750	30,458	14,923	10%	-1%	188%
Imported Red Rice 1kg	7,780	21,792	22,250	22,417	10,957	3%	1%	189%
Petrol 1 litre	12,442	28,917	31,458	34,500	16,916	19%	10%	177%
Sugar	17,628	27,250	27,625	28,875	14,142	6%	5%	279%
Vegetable Oil 1 litre	14,586	35,500	36,042	38,792	19,033	16%	2%	168%
Wheat Flour 1kg	7,429	18,667	18,167	18,167	9,354	3%	0%	158%
Wheat Grain 1kg	2,499	-	-	-	-	-	-	-
Cereal Prices								
Red Sorghum 1kg	2,519	6,944	7,416	8,367	4,027	20%	13%	232%
White Maize 1kg	2,367	5,499	4,929	5,366	2,547	-2%	9%	127%
Livestock & Livestock Product Prices								
Camel Local Quality (Head)	4,125,958	10,810,000	13,745,000	14,411,000	7,107,818	33%	5%	249%
Cattle Local Quality (Head)	1,333,996	3,450,000	3,863,500	3,977,500	1,961,717	15%	3%	198%
Fresh Camel Milk 1 litre	5,723	17,354	15,208	17,375	8,470	0%	14%	204%
Goat Export Quality (Head)	525,675	1,217,896	1,428,841	1,471,250	725,563	21%	3%	180%
Goat Local Quality (Head)	361,273	962,917	1,113,333	1,092,917	538,958	14%	-2%	203%
Other Essential Items								
Charcoal 50kg	40,515	101,479	111,833	106,191	52,276	5%	-5%	162%
Cowpeas 1 kg	5,565	19,837	14,941	14,996	7,286	24%	0%	169%
Unskilled Labor Wage Rate	21,237	59,375	66,875	67,125	33,008	13%	0%	216%
Firewood Bundle	2,013	3,625	4,333	4,667	2,991	29%	8%	132%
Local Sesame Oil 1 litre	20,129	60,417	57,708	59,250	29,124	-2%	3%	194%
Exchange Rate (Somali Shilling per USD)	16,615	32,638	30,739	31,533	15,453	-3%	3%	90%
Construction Materials*								
Cement 50kg	-	-	296,250	290,750	143,306	-	-2%	-
Cooking Pot Aluminium 7 Litre	-	-	1,070,000	1,070,000	499,294	-	-5%	-
Galvanised Iron Sheet Ga 26	-	-	114,250	117,000	57,638	-	-2%	-
Hollow Concrete Block 10cm x 20cm x 40cm	-	-	14,000	14,000	6,805	-	0%	-
Non Collapsible Jernycan 10 Litre	-	-	45,313	50,813	24,962	-	5%	-
Plastic Tarpaulin 14m x 5 m	-	-	263,125	276,667	136,380	-	-2%	-
Roofing Nails 15kg	-	-	640,000	633,375	315,259	-	0%	-
Timber 2m x 4m x 20#	-	-	59,460	62,200	29,099	-	0%	-
Woven Dry Rasted-Bianket 150cm x 200cm	-	-	70,556	78,000	38,372	-	-11%	-
Terms of Trade								
Labour Wage (Daily) Cereal (Maize/Kg)	9	11	14	13	13	16%	-8%	39%
Local Goat (Head) Cereal (Maize/Kg)	153	175	226	204	212	16%	-10%	33%
Price Indices								
Consumer Price Index	-	187	197	203	-	8%	3%	-
Purchasing Power Index	-	0.53	0.51	0.49	-	-8%	-3%	-

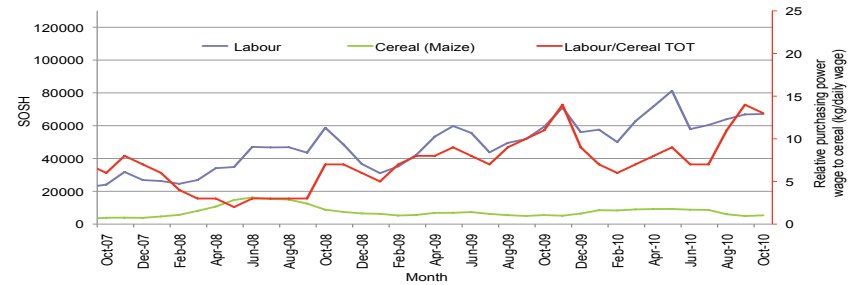
* Data has been collected for the past 3-5 months only

* Data has been collected for the past 3 - 4 months only

Imported commodity prices compared to exchange rates

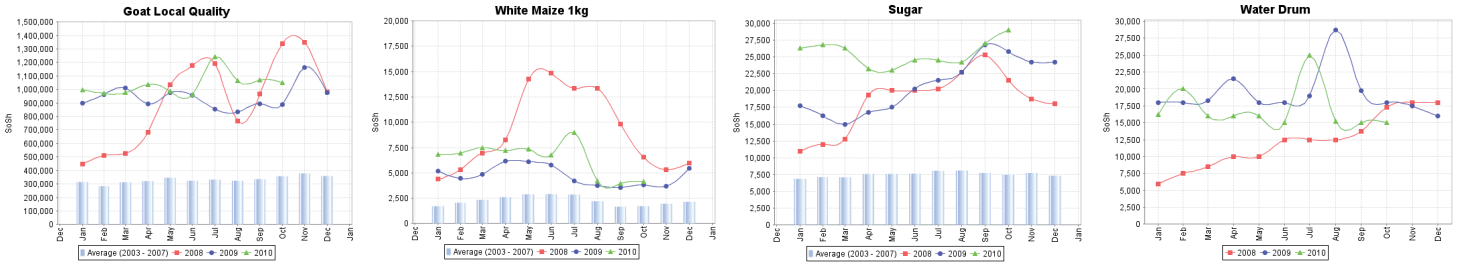


Trends in wage rates, staple cereal prices and relative purchasing power

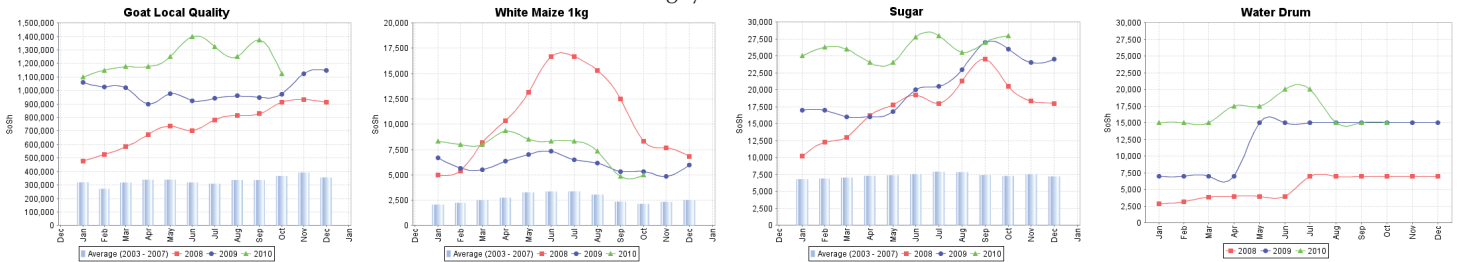


Nominal prices for selected markets

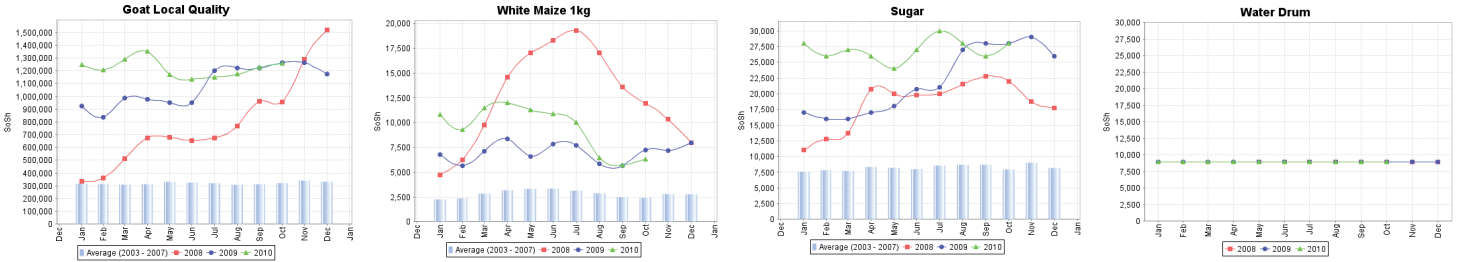
Qoryoley Market



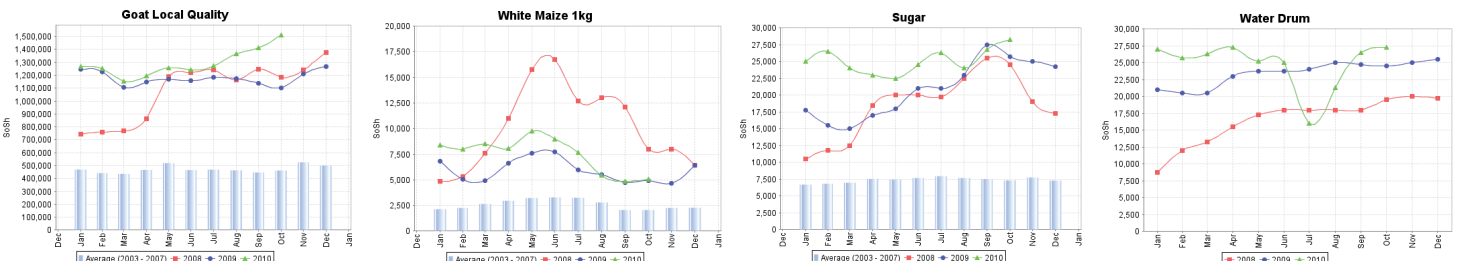
Afgoye Market



Jowhar Market



Merka Market

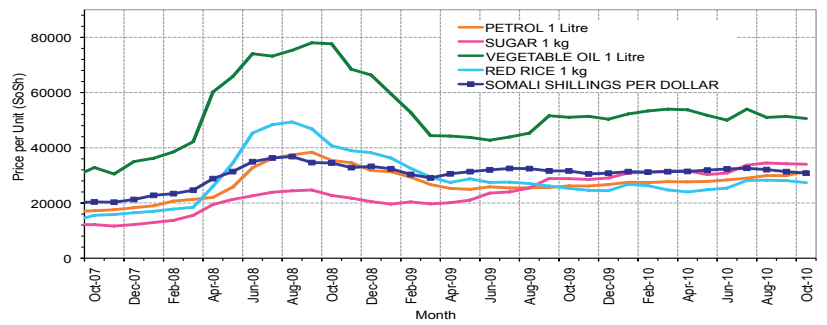


Regional analysis: Central Regions

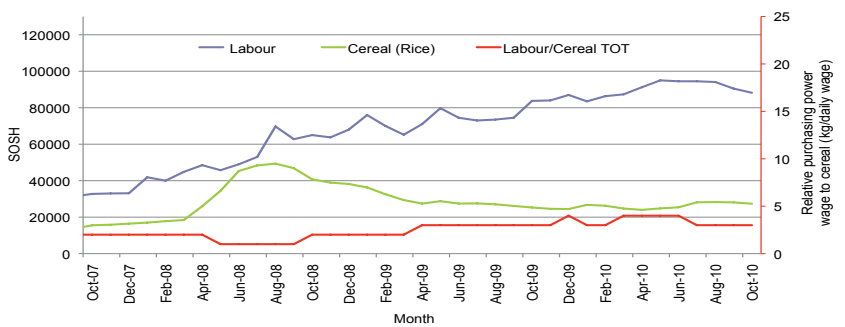
Indicator	5-Year Average	Oct-09	Sep-10	Current Nominal Price	Current Real Price (Deflated)	% Change Same Month Previous Year	% Change Previous Month	% Change 5-year avg (2003-07)
Imported Commodities Prices								
Red 1 litre	11,594	28,050	31,600	31,400	13,480	12%	-1%	171%
Imported Red Rice 1kg	9,036	25,300	28,100	27,360	11,733	8%	-3%	203%
Petrol 1 litre	12,743	26,200	29,900	31,500	13,523	20%	5%	147%
Sugar	9,280	28,800	34,200	34,040	14,622	18%	0%	267%
Vegetable Oil 1 litre	18,925	51,050	51,350	50,600	21,783	-1%	-1%	167%
Wheat Flour 1kg	8,619	20,850	22,600	21,840	9,259	4%	-4%	151%
Wheat Grain 1kg	7,500	14,333	12,000	12,000	5,090	-16%	0%	60%
Cereal Prices								
Red Sorghum 1kg	4,807	9,250	12,000	12,600	5,349	96%	9%	162%
White Maize 1kg	4,980	13,000	13,400	12,040	5,107	-7%	-10%	142%
Livestock & Livestock Product Prices								
Camel Local Quality (Head)	2,411,940	6,250,000	7,962,500	8,000,000	3,459,715	-3%	0%	232%
Cattle Local Quality (Head)	1,572,500	2,000,000	2,200,000	1,945,000	-	-3%	-12%	24%
Fresh Camel Milk 1 litre	12,617	49,650	39,000	39,400	16,940	-21%	1%	212%
Goat Export Quality (Head)	399,815	1,430,000	1,325,000	1,370,000	592,393	-4%	3%	243%
Goat Local Quality (Head)	288,690	1,004,500	947,000	977,400	422,603	-3%	3%	239%
Other Essential Items								
Charcoal 50kg	54,185	184,500	192,000	184,300	79,605	0%	-4%	240%
Cowpeas 1 kg	7,737	25,800	27,100	27,040	11,594	5%	0%	249%
Unskilled Labor Wage Rate	27,800	83,750	90,500	88,200	38,044	5%	-3%	217%
Firewood Bundle	3,580	20,600	29,250	30,000	12,874	46%	3%	738%
Local Sesame Oil 1 litre	27,642	100,500	95,000	93,000	40,120	-7%	-2%	230%
Exchange Rate (Somali Shilling per USD)	16,042	31,620	31,355	30,795	13,218	-3%	-2%	92%
Construction Materials*								
Cement 50kg	-	-	334,200	334,200	144,434	-	0%	-
Cooking Pot Aluminium 7 Litre	-	-	398,000	458,000	197,974	-	15%	-
Galvanized Iron Sheet Ga 26	-	-	171,000	164,300	70,956	-	-4%	-
Hollow Concrete Block 10cm x 20cm x 40cm	-	-	15,500	16,850	7,187	-	9%	-
Non Collapsible Jerrycan 10 Litre	-	-	36,250	35,500	15,253	-	-2%	-
Plastic Tarpsaulin 14m x 5 m	-	-	335,000	345,600	149,364	-	3%	-
Roofing Nails 15kg	-	-	931,200	922,200	398,730	-	-1%	-
Timber 2m x 4m x 20ft	-	-	155,650	154,800	66,761	-	-1%	-
Woven Dry Raised Blanket 150cm x 200cm	-	-	172,500	164,500	71,042	-	-5%	-
Terms of Trade								
Labour Wage (Daily) Cereal (Rice/Kg)	3	3	3	3	3	-3%	0%	5%
Local Goat (Head) Cereal (Rice/Kg)	32	40	34	36	36	-10%	6%	12%
Camel (Head) Cereal (Kg)	267	326	283	292	296	-10%	3%	19%
Price Indices								
Consumer Price Index	-	213	227	231	-	8%	2%	-
Purchasing Power Index	-	0.47	0.44	0.43	-	-8%	-2%	-

* Data has been collected for the past 3-5 months only
* Data has been collected for the past 3 - 4 months only

Imported commodity prices compared to exchange rates

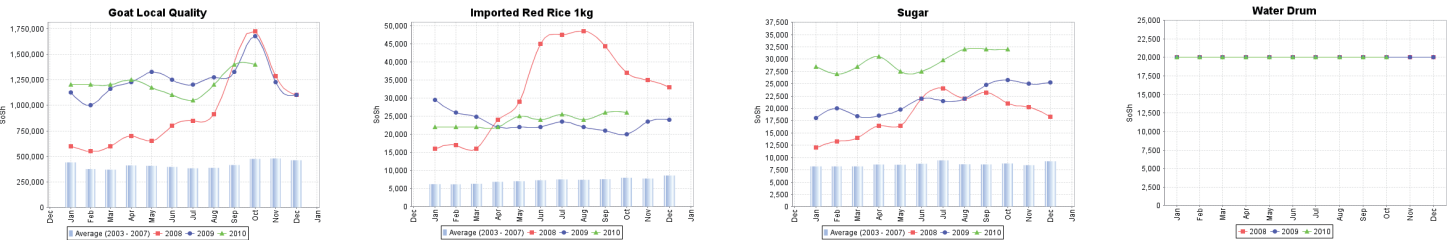


Trends in wage rates, staple cereal prices and relative purchasing power

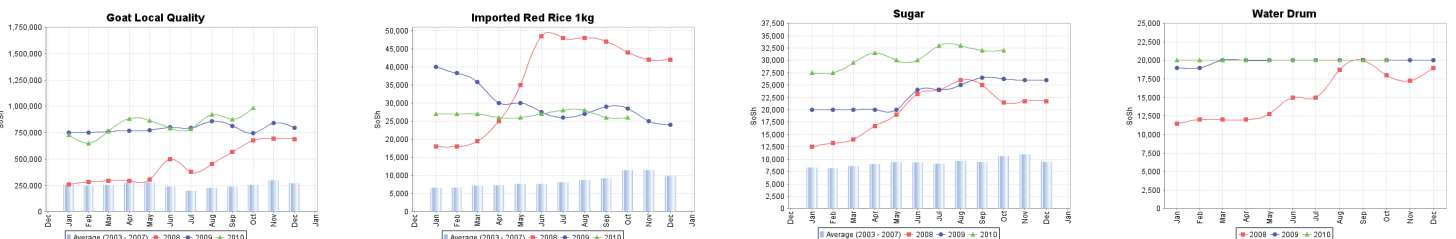


Nominal prices for selected markets

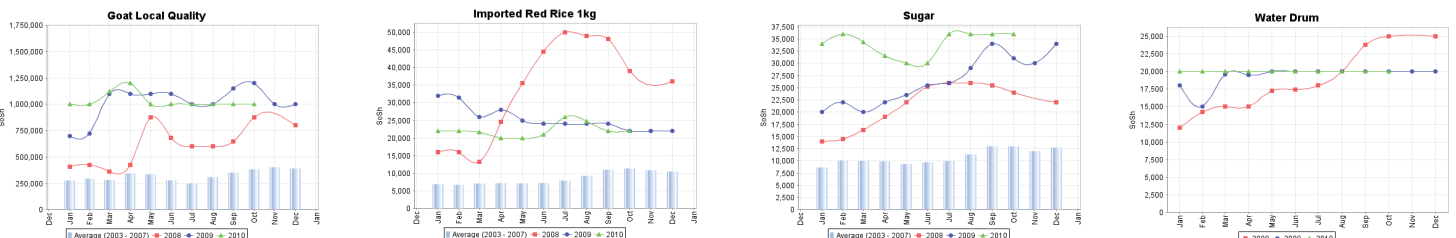
Galkayo Market



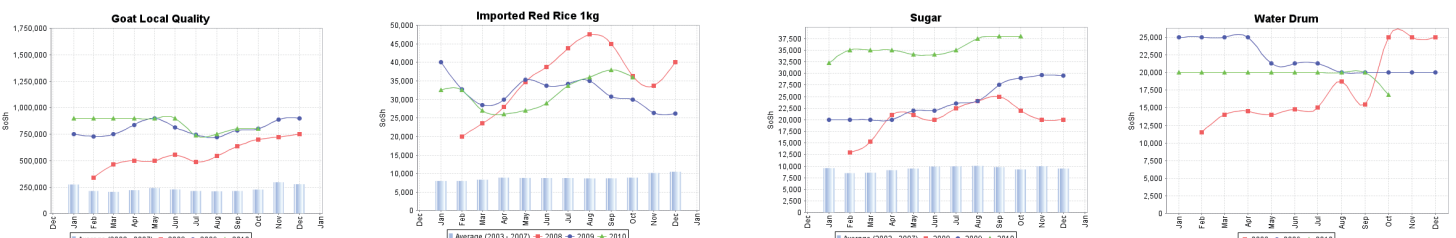
Dusamareb Market



Abudwak Market



Harardhere Market

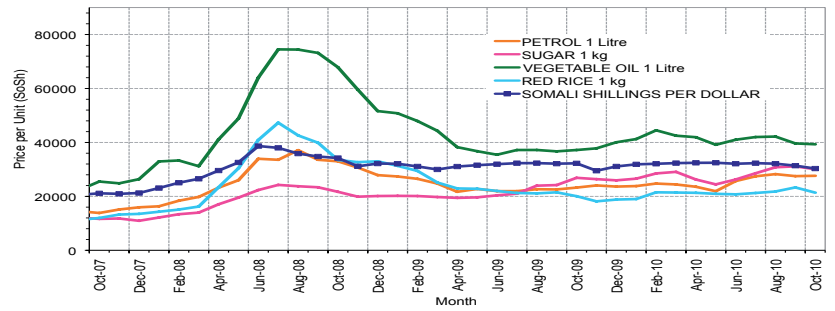


Regional analysis: Northeast Regions

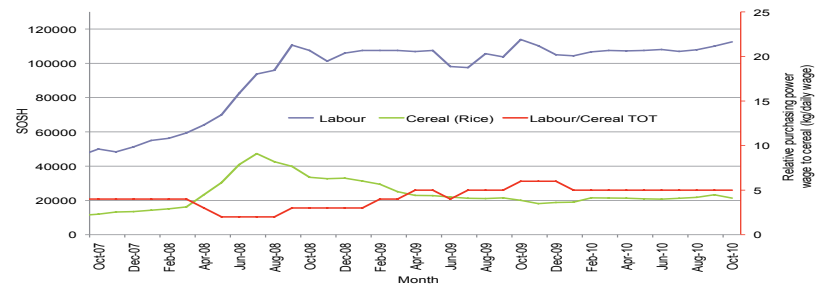
Indicator	5-Year Average	Oct-09	Sep-10	Current Nominal Price	Current Real (Deflated) Price	% Change Same Month Previous Year	% Change Previous Month	% Change 5-year Avg (2003-07)
Imported Commodities Prices								
Diesel 1 litre	10,043	24,875	29,375	29,000	14,103	17%	-1%	189%
Imported Red Rice 1kg	7,427	20,063	23,313	21,375	10,369	7%	-8%	188%
Petrol 1 litre	10,163	23,250	27,500	27,625	13,430	19%	0%	172%
Sugar	8,752	26,875	31,125	30,063	14,654	12%	-3%	243%
Vegetable Oil 1 litre	16,281	37,168	39,625	35,313	19,154	6%	-1%	115%
Wheat Flour 1kg	8,012	18,250	19,375	18,813	9,114	3%	-3%	135%
Wheat Grain 1kg	8,800	25,750	27,375	26,000	12,634	1%	-5%	195%
Cereal Prices								
Red Sorghum 1kg	6,975	15,250	15,000	14,625	7,063	-4%	-3%	110%
White Maize 1kg	6,442	15,750	17,583	17,500	8,471	11%	0%	172%
Livestock & Livestock Product Prices								
Camel Local Quality (Head)	3,193,611	11,387,500	12,175,000	13,256,250	6,492,354	16%	9%	315%
Cattle Local Quality (Head)	2,094,200	6,750,000	5,625,000	7,625,000	3,734,362	13%	36%	264%
Fresh Camel Milk 1 litre	14,940	49,583	50,187	48,500	23,654	-2%	-3%	225%
Goat Export Quality (Head)	437,887	1,388,125	1,312,500	1,387,500	679,450	-1%	6%	217%
Goat Local Quality (Head)	399,933	1,248,125	1,072,938	1,204,375	589,761	-4%	12%	201%
Other Essential Items								
Charcoal 50kg	80,058	254,375	288,438	297,188	145,452	17%	3%	271%
Cowpeas 1 kg	10,338	31,083	31,250	30,667	14,920	-1%	-2%	197%
Unskilled Labor Wage Rate	45,500	113,875	110,000	112,500	54,999	-1%	2%	147%
Firewood Bundle	7,180	32,063	35,188	35,125	17,103	10%	0%	399%
Local Sesame Oil 1 litre	30,853	102,083	75,417	70,417	34,388	-31%	-3%	127%
Exchange Rate (Somali Shilling per USD)	16,874	32,250	31,375	30,313	14,746	-6%	-3%	80%
Construction Materials								
Cement 50kg	-	-	232,888	229,000	112,056	-	-2%	-
Cooking Pot Aluminium 7 Litre	-	-	323,125	323,750	158,462	-	0%	-
Galvanised Iron Sheet Ga 26	-	-	235,625	222,500	108,873	-	-6%	-
Hollow Concrete Block 10cm x 20cm x 40cm	-	-	11,125	11,375	5,471	-	2%	-
Non Collapsible Jernyan 10 Litre	-	-	33,750	33,438	16,277	-	-1%	-
Plastic Tarpaulin 14m x 5 m	-	-	185,625	189,375	92,649	-	2%	-
Roofing Nails 15kg	-	-	392,500	396,875	194,276	-	1%	-
Timber 2in x 4in x 20ft	-	-	250,938	242,688	118,760	-	-3%	-
Woven Dry Rased Blanket 150cm x 200cm	-	-	257,500	238,750	116,832	-	-7%	-
Terms of Trade								
Labour Wage (Daily) / Cereal (Rice/Kg)	6	6	5	5	5	-7%	12%	-14%
Local Goat (Head) / Cereal (Rice/Kg)	54	62	46	56	57	-9%	22%	5%
Price Indices								
Consumer Price Index	-	227	206	204	-	-10%	-1%	-
Purchasing Power Index	-	0.44	0.49	0.49	-	11%	1%	-

* Data has been collected for the past 3-4 months only

Imported commodity prices compared to exchange rates

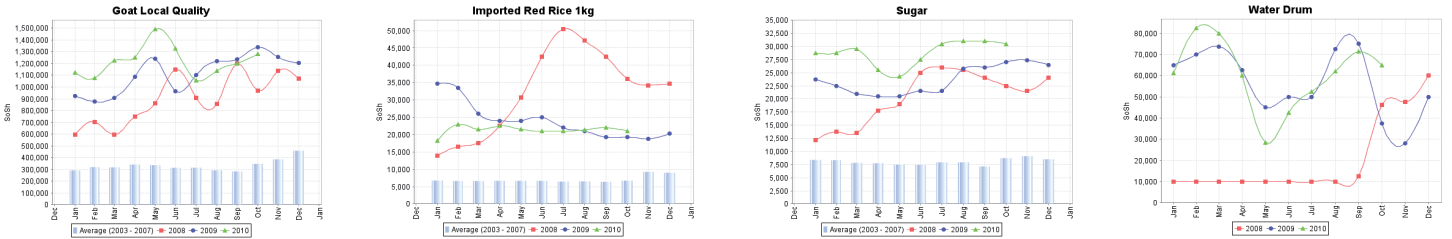


Trends in wage rates, staple cereal prices and relative purchasing power

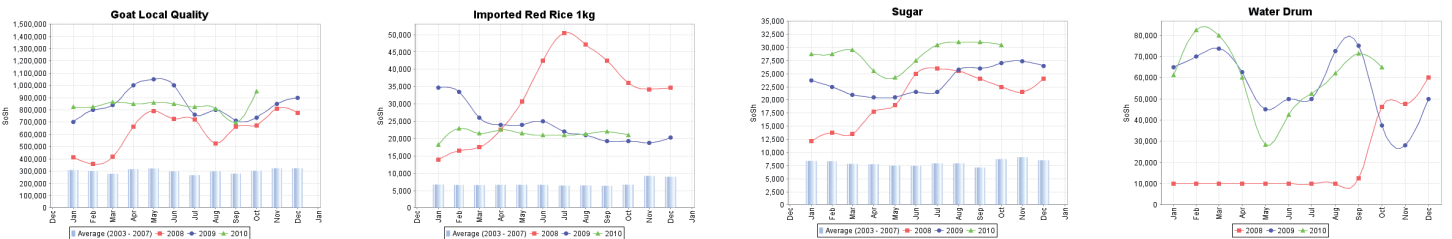


Nominal prices for selected markets

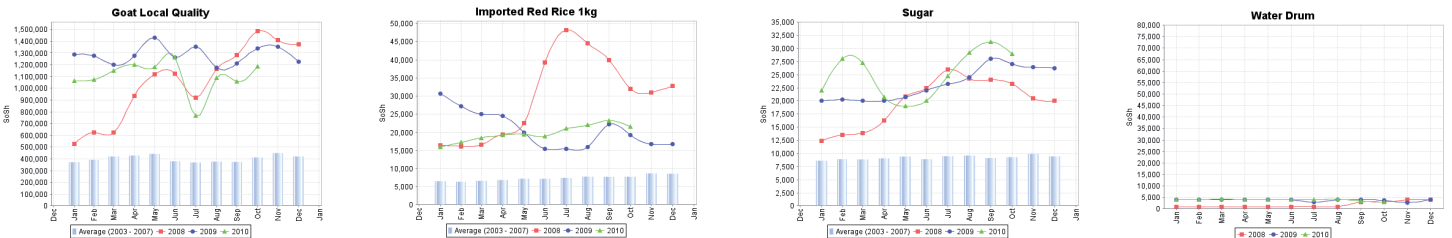
Lasanod Market



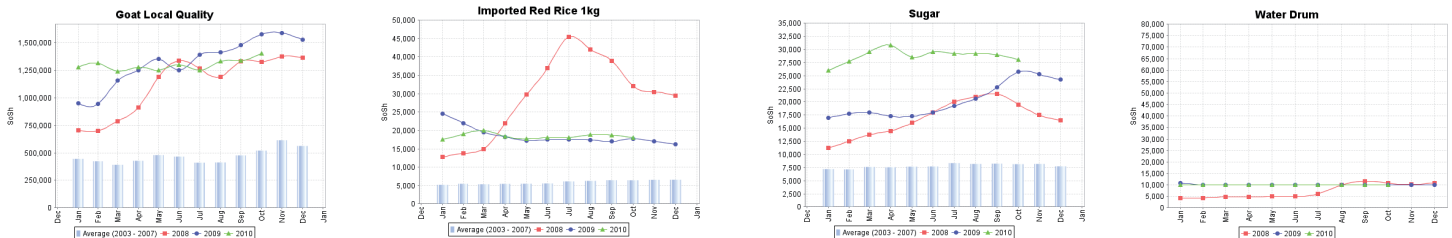
Erigavo Market



Garowe Market



Bossaso Market

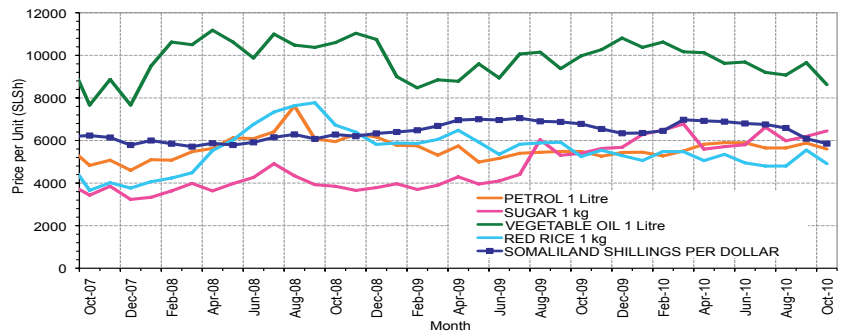


Regional analysis: Northwest Regions

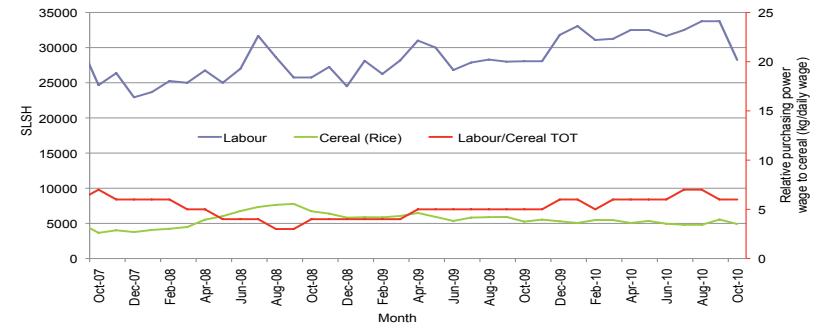
Indicator	5-Year Average	Oct-09	Sep-10	Current Nominal Price	Current Real (Deflated) Price	% Change Same Month Previous Year	% Change Previous Month	% Change 5-year avg (2003-07)
Imported Commodities Prices								
Diesel 1 litre	3,603	4,844	5,688	5,650	4,993	17%	-1%	57%
Imported Red Rice 1kg	2,933	5,250	5,550	4,913	4,329	-6%	-11%	68%
Petrol 1 litre	4,418	5,488	5,881	5,600	4,948	2%	-5%	27%
Sugar	3,126	5,400	6,194	6,450	5,714	19%	4%	106%
Vegetable Oil 1 litre	7,171	9,975	9,656	8,625	7,675	-14%	-11%	20%
Wheat Flour 1kg	2,985	3,988	4,800	4,250	3,731	7%	12%	42%
Wheat Grain 1kg	1,968	4,000	2,833	2,400	2,063	-40%	-15%	22%
Cereal Prices								
Red Sorghum 1kg	1,750	3,833	2,633	2,250	1,928	-41%	-15%	29%
White Maize 1kg	2,058	4,225	2,650	2,750	2,379	-35%	4%	34%
Livestock & Livestock Product Prices								
Camel Local Quality (Head)	1,400,683	1,400,000	1,258,375	700,000	630,879	-50%	-44%	-50%
Cattle Local Quality (Head)	906,368	1,439,167	1,240,833	1,108,333	998,949	-23%	-11%	22%
Fresh Camel Milk 1 litre	4,148	4,663	4,844	4,750	4,182	2%	-2%	15%
Goat Export Quality (Head)	173,238	289,000	285,313	278,750	251,165	-4%	-2%	61%
Goat Local Quality (Head)	138,760	201,750	246,438	235,000	211,729	16%	-5%	69%
Other Essential Items								
Charcoal 50kg	21,081	29,969	35,844	32,688	29,365	9%	-9%	55%
Cowpeas 1 kg	4,666	9,750	10,333	9,667	8,614	-1%	-6%	107%
Unskilled Labor Wage Rate	27,200	28,063	33,750	28,250	25,364	1%	-16%	4%
Firewood Bundle	3,357	3,858	2,600	2,500	2,153	-35%	-4%	-26%
Local Sesame Oil 1 litre	17,995	25,583	25,333	25,667	23,036	0%	1%	43%
Exchange Rate (Somaliland Shilling per USD)	6,550	6,781	6,087	5,856	5,179	-14%	-4%	-11%
Construction Materials*								
Cement 50kg	-	-	50,925	50,000	44,970	-	-2%	-
Cooking Pot Aluminium 7 Litre	-	-	91,750	79,000	70,209	-	-15%	-
Galvanised Iron Sheet Ga 26	-	-	37,700	36,400	32,711	-	-3%	-
Hollow Concrete Block 10cm x 20cm x 40cm	-	-	3,500	3,100	2,694	-	-11%	-
Non Collapsible Jerrycan 10 Litre	-	-	6,000	5,500	4,868	-	-8%	-
Plastic Tarpaulin 14m x 5 m	-	-	54,750	53,750	48,500	-	-2%	-
Roofing Nails 15kg	-	-	163,875	162,750	146,603	-	-1%	-
Timber 2m x 4m x 20ft	-	-	121,700	132,500	119,335	-	9%	-
Woven Dry Raised Blanket 150cm x 200cm	-	-	59,063	60,313	54,266	-	2%	-
Terms of Trade								
Labour Wage (Daily) / Cereal (Rice/Kg)	9	5	6	6	6	8%	-5%	-38%
Local Goat (Head) / Cereal (Rice/Kg)	47	38	44	48	49	24%	8%	1%
Price Indices								
Consumer Price Index	-	112	113	111	-	-1%	-1%	-
Purchasing Power Index	-	0.89	0.89	0.90	-	1%	1%	-

* Data has been collected for the past 3-5 months only
* Data has been collected for the past 3 - 4 months only

Imported commodity prices compared to exchange rates

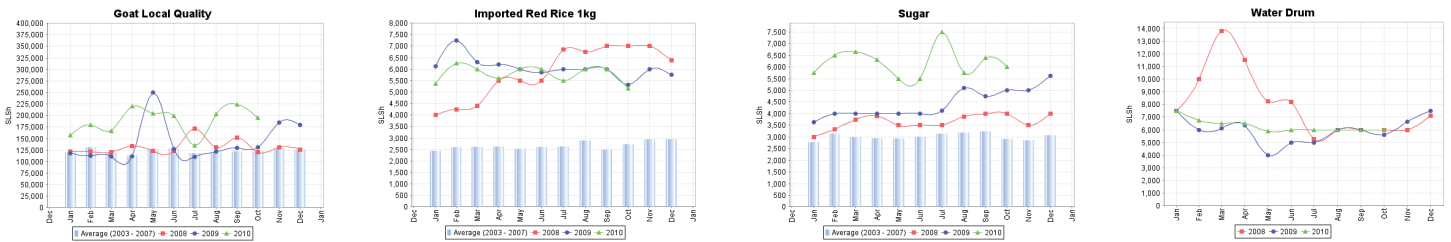


Trends in wage rates, staple cereal prices and relative purchasing power

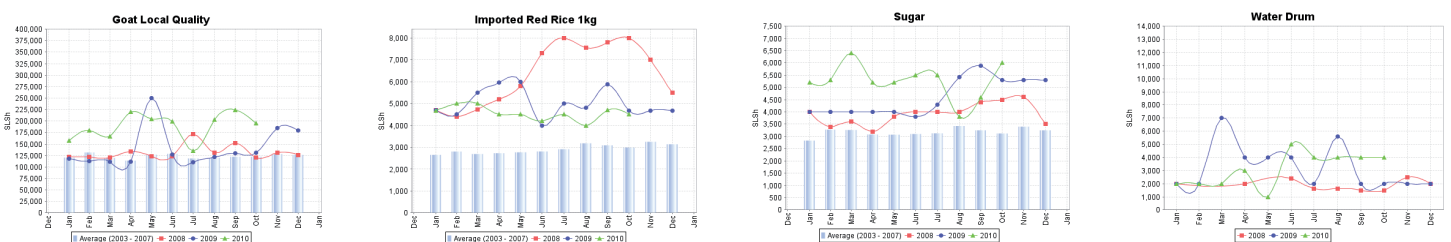


Nominal prices for selected markets

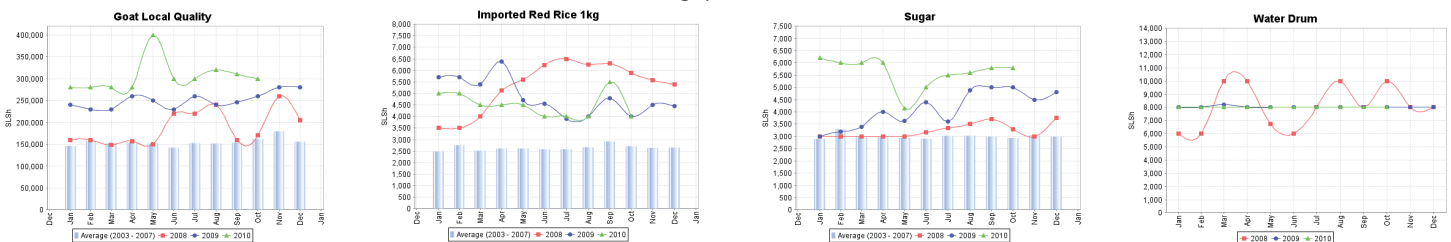
Togwajale Market



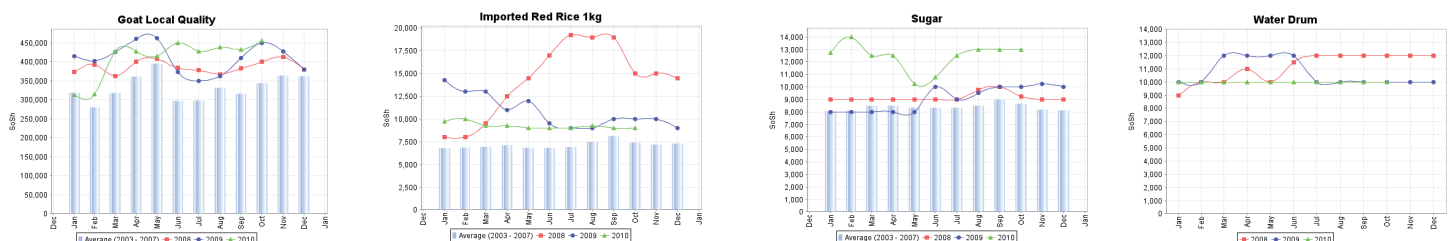
Borama Market



Hargeysa Market



Burao Market

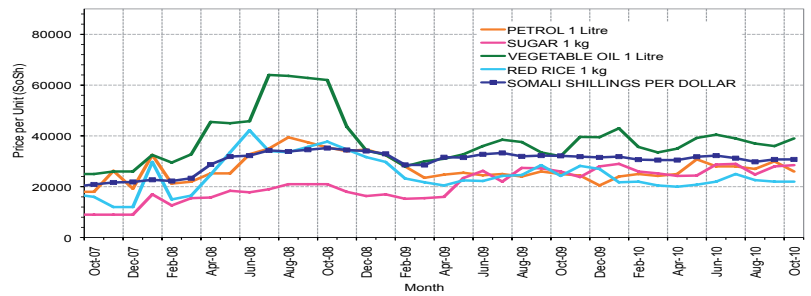


Regional analysis:Banadir Region

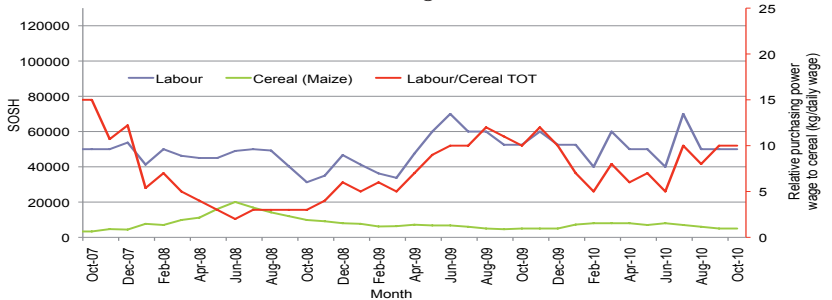
Indicator	5-Year Average	Oct-09	Sep-10	Current Nominal Price	Current Real (Deflated) Price	% Change Same Month Previous Year	% Change Previous Month	% Change 5-year avg (2003-07)
Imported Commodities Prices								
Diesel 1 litre	8,225	24,000	26,458	26,883	13,159	12%	2%	227%
Imported Red Rice 1kg	6,406	24,250	21,333	21,633	10,570	-11%	1%	238%
Peanut 1 litre	9,875	25,000	25,500	25,372	12,414	1%	-1%	157%
Sugar	6,468	26,000	28,375	30,467	14,527	17%	7%	371%
Vegetable Oil 1 litre	11,662	32,000	39,750	40,550	19,900	27%	2%	248%
Wheat Flour 1kg	6,113	14,000	17,000	17,150	8,359	23%	1%	181%
Wheat Grain 1kg	3,920	9,000	10,000	10,000	4,832	11%	0%	155%
Cereal Prices								
Red Sorghum 1kg	2,247	4,500	6,238	5,624	2,674	25%	-10%	150%
White Maize 1kg	2,201	5,000	6,300	5,997	2,858	20%	-5%	172%
Livestock & Livestock Product Prices								
Camel Local Quality (Head)	5,337,500	22,000,000	18,000,000	17,000,000	8,384,787	-23%	-6%	219%
Cattle Local Quality (Head)	3,087,500	5,000,000	6,500,000	6,000,000	2,959,272	20%	-8%	94%
Fresh Camel Milk 1 litre	4,562	16,000	18,979	19,563	9,549	22%	3%	329%
Goat Export Quality (Head)	-	1,825,000	2,000,000	2,050,000	1,011,019	12%	2%	2%
Goat Local Quality (Head)	628,125	1,675,000	1,700,000	1,717,500	847,620	3%	1%	173%
Other Essential Items								
Charcoal 5kg	100,000	130,000	145,333	150,917	74,337	16%	4%	51%
Compass 1 kg	4,541	12,750	14,346	16,175	7,878	27%	13%	256%
Unskilled Labor Wage Rate	61,875	62,500	73,542	72,083	35,453	37%	-2%	16%
Firewood Bundle	40812	3,000	4,708	5,108	-	70%	8%	-87%
Local Sesame Oil 1 litre	16,625	67,500	69,917	61,517	30,242	-9%	3%	270%
Exchange Rate (Somali Shilling per USD)	16,829	32,150	30,908	30,172	14,782	-6%	-2%	79%
Construction Materials*								
Cement 50kg	-	-	279,250	273,542	-	-	-2%	-
Cooking Pot Aluminium 7 Litre	-	-	190,000	180,000	-	-	-5%	-
Galvanised Iron Sheet Ga 26	-	-	116,625	113,992	-	-	-2%	-
Hollow Concrete Block 10cm x 20cm x 40cm	-	-	9,754	10,100	-	-	4%	-
Non Collapsible Jernycan 10 Litre	-	-	30,000	26,667	-	-	-11%	-
Plastic Tarpaulin 14m x 5 m	-	-	287,083	274,167	-	-	-8%	-
Roofing Nails 15kg	-	-	566,854	571,538	-	-	1%	-
Timber 2in x 4in x 20ft	-	-	169,792	184,767	-	-	9%	-
Woven Dry Rashed Blanket 150cm x 200cm	-	-	152,000	123,750	-	-	-19%	-
Terms of Trade								
Labour Wage (Daily) Cereal (Maize/Kg)	28	11	12	12	12	14%	3%	-57%
Local Goat (Head) Cereal (Maize/Kg)	285	335	270	266	296	-15%	6%	0%
Price Indices								
Consumer Price Index	-	187	197	203	-	8%	3%	-
Purchasing Power Index	-	0.53	0.51	0.49	-	-8%	-3%	-

* Data has been collected for the past 3-4 months only

Bakara: Imported Commodity Prices compared to Exchange Rate

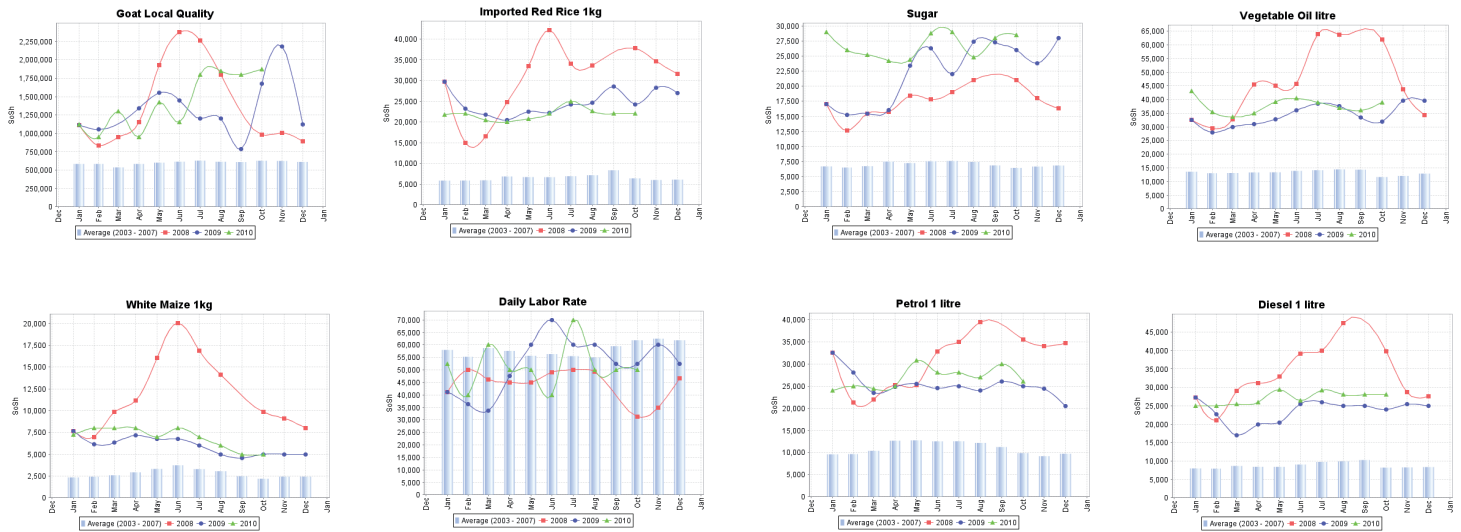


Bakara: Trends in Wage Rates, Staple Cereal Prices and Relative Purchasing Power



Nominal prices for selected markets

Bakara Market

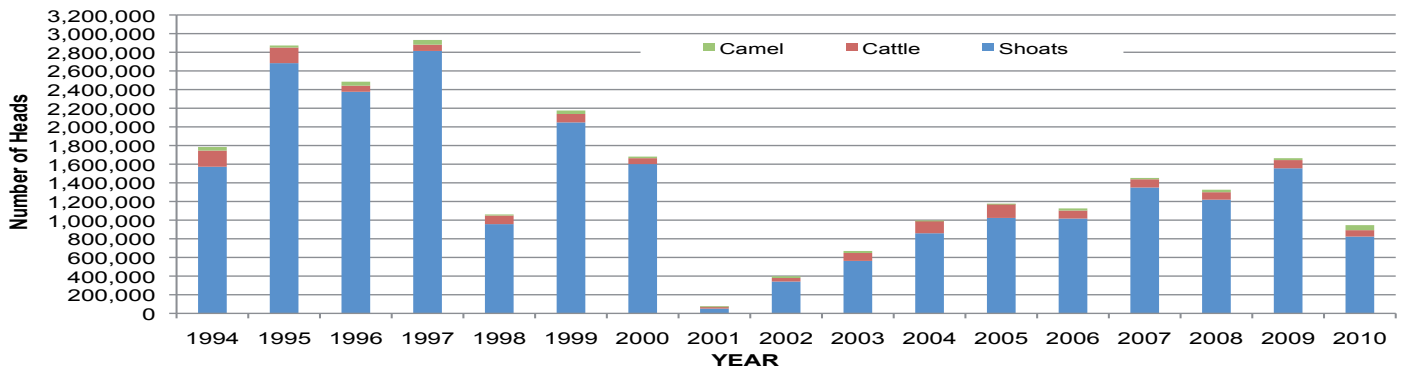


* Data for Banadir is only available for Bakara Market. Other Markets were introduced only 4 months ago

Selected Export Products

Berbera Livestock Exports (Number of Heads)

	1994	1995	1996	1997	1998	1999	2000	2001	2002	2003	2004	2005	2006	2007	2008	2009	2010
Shoats	1,572,656	2,683,597	2,376,646	2,814,495	957,224	2,048,136	1,601,083	51,546	341,711	563,107	859,404	1,023,795	1,017,242	1,350,054	1,219,519	1,556,003	1,079,457
Cattle	173,400	167,128	65,127	66,939	92,213	89,967	63,263	20,973	37,547	84,312	131,852	148,151	85,631	88,143	80,051	88,005	81,894
Camel	38,553	21,993	42,801	50,587	11,663	37,430	16,984	3,473	18,864	21,874	5,147	5,069	22,810	14,245	26,515	20,206	60,100



2010 Livestock Export Heads are up to September for Berbera

Bossaso Livestock Exports (Number of Heads)

	1994	1995	1996	1997	1998	1999	2000	2001	2002	2003	2004	2005	2006	2007	2008	2009	2010
Shoats	344,000	524,346	614,407	494,320	517,020	633,669	571,455	548,853	1,412,450	1,483,409	1,166,480	1,594,859	1,777,283	1,522,855	1,236,775	1,159,454	984,264
Cattle	1,450	8,795	15,335	17,831	29,492	36,586	27,604	42,248	53,313	71,328	79,994	91,910	104,595	89,190	78,046	67,385	85,534
Camel	5,397	8,392	20,462	14,599	3,938	15,544	8,177	1,950	9,720	4,259	2,488	26,109	33,724	27,580	27,639	15,331	26,889

