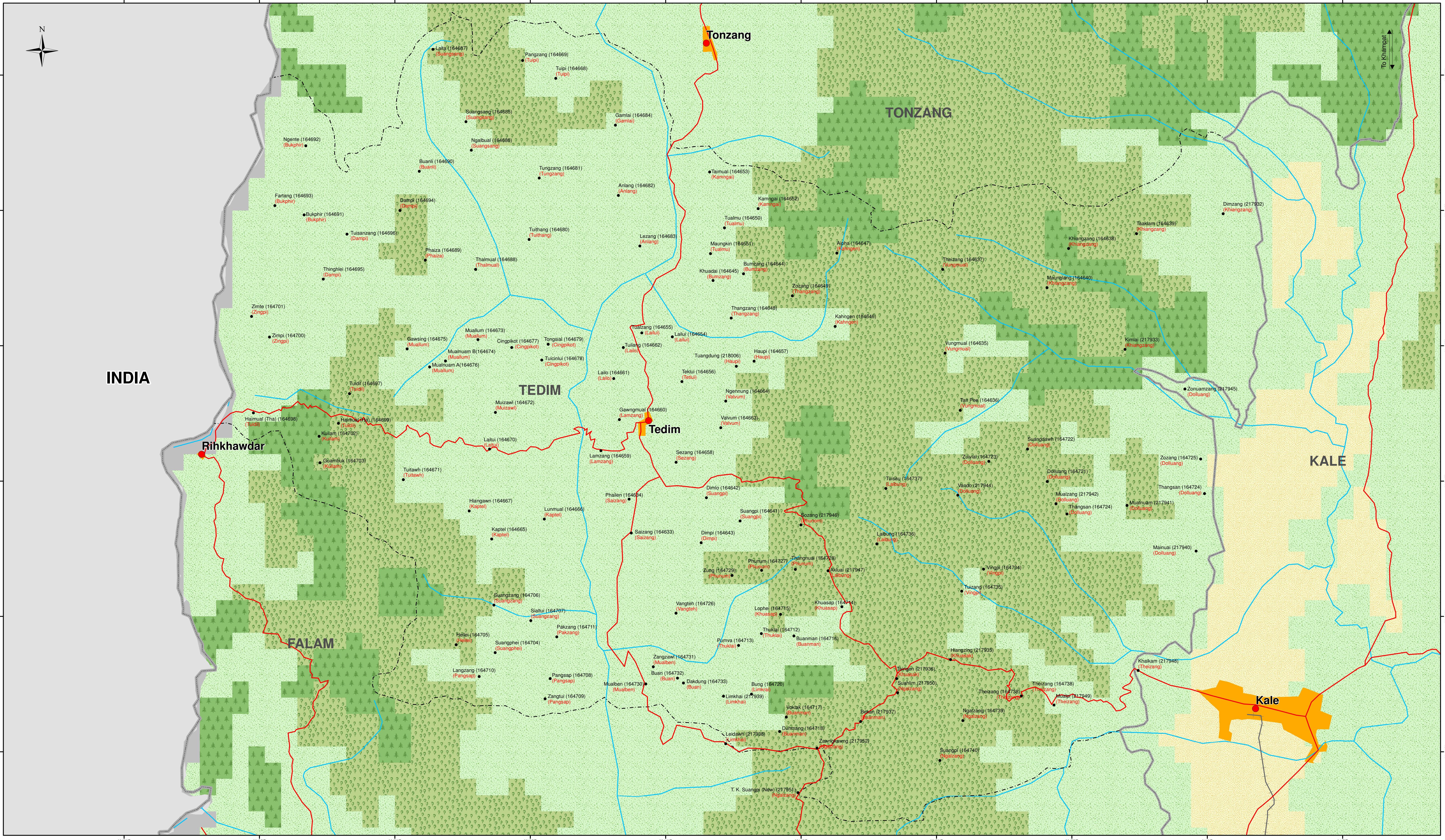


Myanmar Information Management Unit
Tedim Township - Chin State



Legend

- Villages (Black dot)
- Towns (Red dot)
- Road (Red line)
- Stream (Blue line)
- Railway (Black line with cross-ticks)
- Urban (Yellow area)
- Township Boundary (Dashed line)
- District Boundary (Dotted line)
- State Boundary (Thick grey line)
- International Boundary (Thin grey line)
- Non-Perennial/Intermittent/Fluctuating (Blue wavy line)
- Perennial/Permanent (Blue straight line)

Land Cover

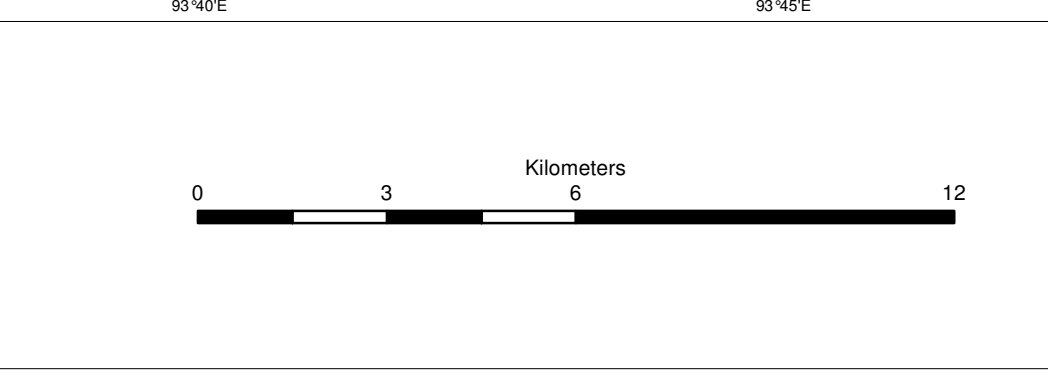
- Deciduous Forest (Green with diagonal lines)
- Dry Mixed Deciduous Forest (Green with horizontal lines)
- Moist Mixed Deciduous Forest (Green with vertical lines)
- Mangrove (Green with wavy lines)
- No data (Grey)
- Agriculture (Yellow with diagonal lines)
- Scrubland (Yellow with horizontal lines)
- Forest (Green with vertical lines)
- Evergreen Forest (Dark green)

Village Name

Tha Nat Sein (171562)
(Saw Gyi)

Village Tract Name

Pcode



Myanmar Information Management Unit (MIMU) is a common resource of the Humanitarian Country Team (HCT) providing information management services, including GIS mapping and analysis, to the humanitarian and development actors both inside and outside of Myanmar.

info.mimu@undp.org
www.themimu.info

Disclaimer: The names shown and the boundaries used on this map do not imply official endorsement or acceptance by the United Nations.

Map ID: MIMU154v02
Creation Date: 3 July 2012.A1
Projection/Datum: GCS/WGS84
Data Source: BASE MAP - MIMU/Boundaries - WFP, modified by MIMU 2008; Place name - Ministry of Home Affairs (GAD) translated by MIMU