



## MEASUREMENT

Approx 50" [127 cm] square.

## MATERIALS

### Waverly® for Bernat®

(100 g/3.5 oz; 180 m/197 yds)

	<b>Contrast A</b> Rays (55611)	<b>2 balls</b>
	<b>Contrast B</b> Rosy Pink (55417)	<b>2 balls</b>
	<b>Contrast C</b> Bahama Blue (55738)	<b>2 balls</b>
	<b>Contrast D</b> Thistle (55320)	<b>2 balls</b>
	<b>Contrast E</b> Bicycle Blue (55134)	<b>2 balls</b>
	<b>Contrast F</b> Vanilla Float (55006)	<b>6 balls</b>

Size 5 mm (U.S. H or 8) crochet hook or size needed to obtain gauge.

## GAUGE

13 sc and 14 rows = 4" [10 cm].

Motif = 9½" [20.5 cm] square.

## ABBREVIATIONS

[www.bernat.com/abbreviations](http://www.bernat.com/abbreviations)

<b>Approx</b> =	<b>Rnd(s)</b> = Round(s)
Approximately	<b>Sc</b> = Single crochet
<b>Ch(s)</b> = Chain(s)	<b>Sl st</b> = Slip stitch
<b>Dc</b> = Double	<b>Sp(s)</b> = Space(s)
crochet	<b>Tr</b> = Treble crochet
<b>Hdc</b> = Half double	<b>Tog</b> = Together
crochet	<b>Yoh</b> = Yarn over
<b>Rep</b> = Repeat(s)	hook

## INSTRUCTIONS

### Basic Motif

With Color 1, ch 2.

**1st rnd:** 8 sc in 2nd ch from hook. Join with sl st to first sc.

**2nd rnd:** Ch 1. 2 sc in each sc around. Join Color 2 with sl st to first sc. Break Color 1. 16 sc.

**3rd rnd:** With Color 2, ch 3 (counts as dc). (1 hdc in next sc. 1 sc in next sc. 1 hdc in next sc. 1 dc in next sc) 3 times. 1 hdc in next sc. 1 sc in next sc. 1 hdc in next sc. Join Color 3 with sl st to top of ch 3. Break Color 2.

**4th rnd:** With Color 3, ch 1. 1 sc in same sp as last sl st. (1 hdc in next hdc. 1 dc in next sc. 1 tr in next hdc. Ch 4. 1 sc in next in next dc) 3 times. 1 hdc in next hdc. 1 dc in next sc. 1 tr in next hdc. Ch 4. Join with sl st to first sc. Break Color 3.

**5th rnd:** Join Color 4 with sl st to any tr. Ch 1. [(2 sc. 2 hdc) in next ch-4 sp. 1 dc in next sc. 1 dc in next hdc. 1 tr in next dc. 1 tr in next tr. Ch 4] 4 times. Join with sl st to first sc. Break Color 4.

**6th rnd:** Join Color 5 with sl st to top of last tr. Ch 1. [(3 sc. 1 hdc) in next ch-4 sp. 1 hdc in each of next 2 sc. 1 dc in each of next 2 hdc. 1 dc in next dc. 1 tr in next dc. 1 tr in each of next 2 tr. Ch 4] 4 times. Join with sl st to first sc. Break Color 5.

**7th rnd:** Join Color 1 with sl st to top of last tr. Ch 1. (4 sc in next ch-4 sp. 1 hdc in each of next 3 sc. 1 hdc in next hdc. 1 dc in each of next 2 hdc. 1 dc in each of next 2 dc. 1 tr in next dc. 1 tr in each of next 3 tr. Ch 4) 4 times. Join with sl st to first sc. Break Color 1.

**8th rnd:** Join Color 2, with sl st to top of last tr. Ch 1. (4 sc in next ch-4 sp. 1 hdc in each of next 4 sc. 1 hdc in each of next 2 hdc. 1 dc in each of next 2 hdc. 1 dc in each of next 3 dc. 1 tr in next dc. 1 tr in each of next 4 tr. Ch 4) 4 times. Join with sl st to first sc. Break Color 2.

**9th rnd:** Join Color 3 with sl st to top of last tr. Ch 1. (4 sc in next ch-4 sp. 1 hdc in each of next 4 sc. 1 hdc in each of next 4 hdc. 1 dc in each of next 2 hdc. 1 dc in each of next 3 dc. 1 tr in each of next 2 dc. 1 tr in each of next 5 tr. Ch 4) 4 times. Join with sl st to first sc. Break Color 3.

**10th rnd:** Join Color 4 with sl st to top of last ch-4 sp. Ch 3 (counts as dc). 3 dc in same ch-4 sp. [1 dc in each st to next ch-4 sp. (1 dc. Ch 3. 4 dc) in next ch-4 sp] 3 times. 1 dc in each st to next ch-4 sp. 1 dc in first ch-4 sp. Ch 3. Join Color 5 with sl st to top of ch 3. Break Color 4.

**11th rnd:** With Color 5, ch 2 (does not count as st). 1 hdc in same sp as sl st. \*1 hdc in each st to next ch-3 sp. (2 hdc. Ch 2. 2 hdc) in next ch-3 sp. Rep from \* around. Join Color 1 with sl st to top of first hdc. Break Color 5.

**12th rnd:** With Color 1, as 11th rnd. Fasten off.

### Motif I (make 3)

Work as given for Basic Motif, having Color 1 - A, Color 2 - B, Color 3 - C, Color 4 - D, Color 5 - E.

### Motif II (make 2)

Work as given for Basic Motif, having Color 1 - D, Color 2 - E, Color 3 - A, Color 4 - B, Color 5 - C.

### Motif III (make 3)

Work as given for Basic Motif, having Color 1 - B, Color 2 - C, Color 3 - D, Color 4 - E, Color 5 - A.

### Motif IV (make 2)

Work as given for Basic Motif, having Color 1 - E, Color 2 - A, Color 3 - B, Color 4 - C, Color 5 - D.

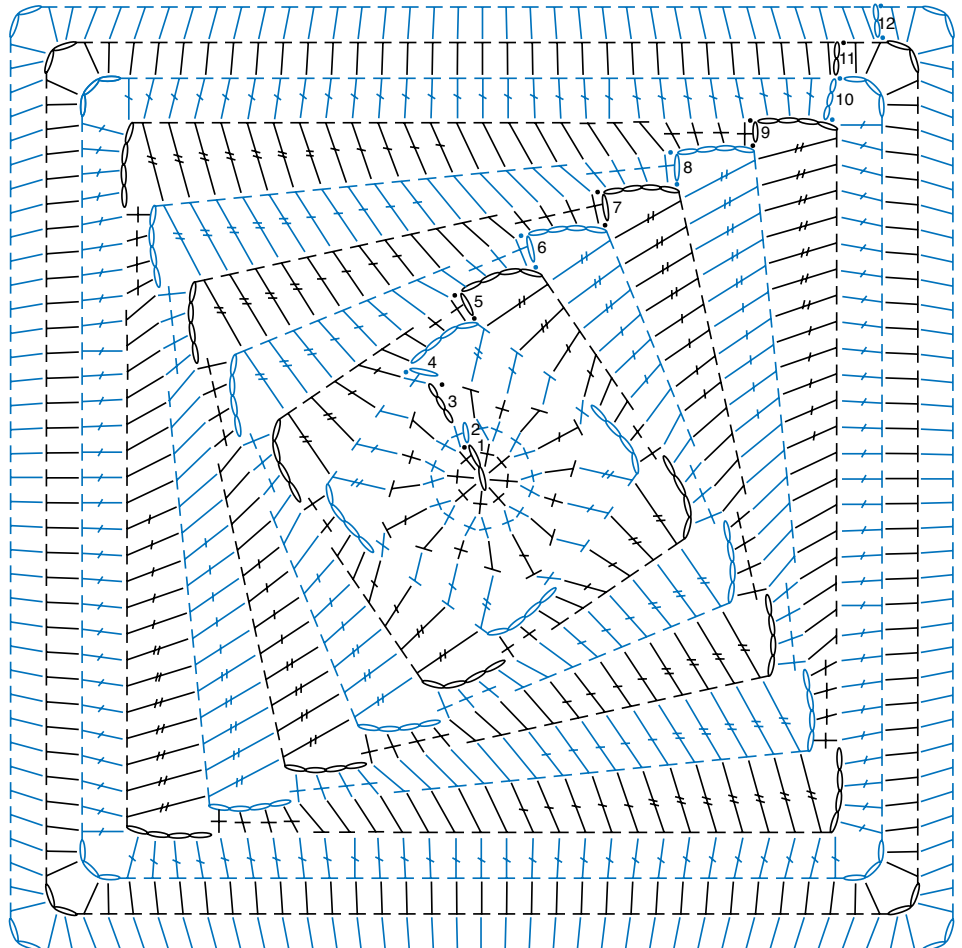
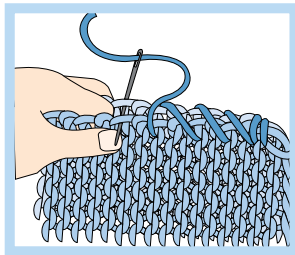
### Motif V (make 3)

Work as given for Basic Motif, having Color 1 - C, Color 2 - D, Color 3 - E, Color 4 - A, Color 5 - B.

### Motif VI (make 12)

With F only, work as given for Basic Motif, omitting all color references.

Following Diagram, sew Motifs tog using Flat seam.



BASIC MOTIF







**Border: 1st rnd: (RS).** Join A with sl st to any corner ch-2 sp. Ch 3 (counts as dc). \*1 dc in each st to next ch-2 sp. (Yoh and draw up a loop in next ch-2 sp. Yoh and draw through 2 loops on hook) twice. Yoh and draw through all loops on hook - dc2tog made. Rep from \* to corner ch-2 sp. (2 dc. Ch 2. 2 dc) in corner ch-2 sp.\* Rep from \* to \* around. Join with sl st to top of ch 3. Fasten off.

**2nd rnd:** Join F with sl st to any corner ch-2 sp. Ch 4 (counts as dc and ch 1). (1 dc. Ch 1. 1 dc) in same sp as sl st. \*Ch 1. Miss next dc. 1 dc in next dc. Rep from \* to next ch-2 sp. Ch 1. [(1 dc. Ch 1) 3 times 1 dc] in next ch-2 sp.\* Rep from \* to \* twice more. \*\*Ch 1. Miss next dc. 1 dc in next dc. Rep from \*\* to end of rnd. Ch 1. Join with sl st to 3rd ch of ch 4. Fasten off.

**3rd rnd:** Join E with sl st to any ch-1 sp except corner ch. Ch 3 (counts as dc). 1 dc in same sp as sl st. \*Miss next dc. 2 dc in next ch-1 sp. Rep from \* around, working 3 dc in each corner ch-1 sp. Join with sl st to top of ch 3. Fasten off.

II	VI	I	VI	III
VI	IV	VI	V	VI
III	VI	II	VI	I
VI	V	VI	IV	VI
I	VI	III	VI	V

### KEY

-  = chain (ch)
-  = slip st (sl st)
-  = single crochet (sc)
-  = half double crochet (hdc)
-  = double crochet (dc)
-  = treble crochet (tr)