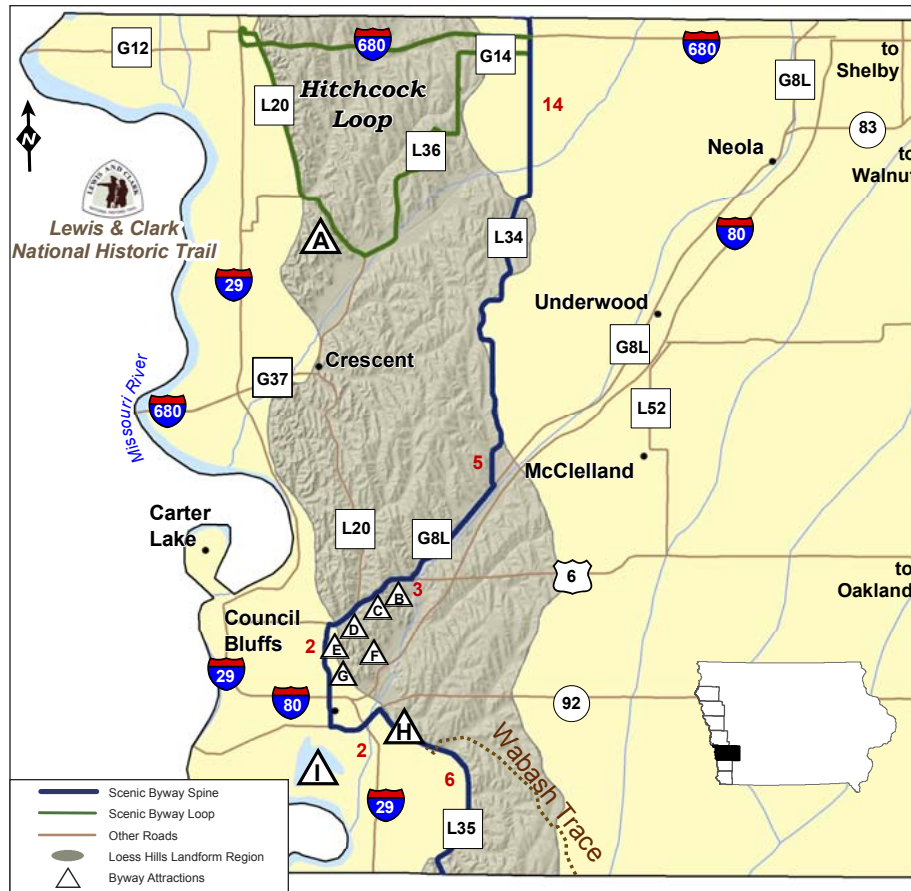


# Pottawattamie County



## THE BYWAY, north to south

- Enter northern Pottawattamie County on County Rd. L34 which passes under I-680 and continues south with horizon-to-horizon views of farm fields that seem to roll away from the Byway.
- Nearly 14 miles later, when the Byway meets County Rd. G81, you should turn right (south) to follow that for 3.5 miles to U.S. 6 which leads into Council Bluffs.
- At U.S. 6, turn right (east) to go to S. 7th St. (Iowa Hwy. 192), a one-way street going south to the South Expressway which passes under I-29/80 to meet the South Omaha Bridge Rd., 3 miles later.
- At the South Omaha Bridge Rd. (also called Iowa Hwy. 92), you turn left (east) to pass over I-29 and then, less than 2 miles after leaving the South Expressway, meet Harry Langdon Blvd.
- At Harry Langdon Blvd., turn right (south). On your left is the Iowa School for the Deaf. Shortly afterward, the boulevard becomes Wabash Ave. and then County Rd. L35 which, for just more than 6 miles, leads you along the base of the Hills and sometimes rides high enough on their flanks to provide vistas of the Missouri River valley before you exit the county.



Hitchcock Nature Area

## BYWAY ATTRACTIONS

### **A Hitchcock Nature Area**

(712-545-3283): About 5 miles north of Crescent, a 1,003-acre preserve that includes the Loess Hills Lodge, an interpretive facility with exhibits and programs, prairie and woodland trails, handicapped-accessible boardwalk, cabins and campsites. An observation tower with a 360-degree view of the Loess Hills is rated as one of the best Hawk Watch stations in North America for viewing different species each fall. Open 9 a.m. – 5 p.m. Tues. – Sat; 1 – 5 p.m. Sun., March – Nov.  
[www.pottcoconservation.com](http://www.pottcoconservation.com)

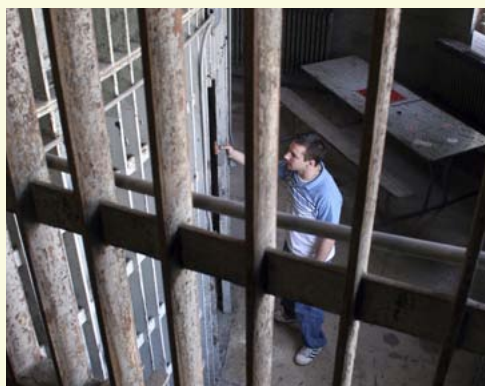
### **B Kanesville Tabernacle**

(712-322-0500): 222 E. Broadway, Council Bluffs. This replica of the log tabernacle is where Brigham Young became president of the Church of Jesus Christ of Latter-day Saints, visitor center and gardens, all related to Mormon history. Open 9:30 a.m. – 7 p.m., daily, Apr. – Sept. and 10 a.m. – 5 p.m. daily, Oct. – Mar. <http://www.lds.org/placestovisit/location/0,10634,1809-1-1-1,00.html>

**C Bayliss Park** This downtown green space has a new plaza, artistic water fountain, interactive children's water fountain, larger-than-life-size squirrel statues and a performance pavilion. A veteran's memorial is also in the park.  
<http://parksandrec.councilbluffs-ia.gov/parks.asp>

### **D Union Pacific Railroad Museum**

(712-329-8307): 200 Pearl St., Council Bluffs. Next to Bayliss Park in an original Carnegie Library building, this is where you want to go to learn about one of the nation's greatest railroads. Open 10 a.m. – 4 p.m., Tues. – Sat. [www.uprr.com/aboutup/history/museum/index.shtml](http://www.uprr.com/aboutup/history/museum/index.shtml)



*Historic Squirrel Cage Jail*

### **E Historic Squirrel Cage Jail**

(712-323-2509): 226 Pearl St. Council Bluffs. In this 1885 revolving jail, the cells turned to allow viewing of all cells from one vantage point. One of three left in the nation, the jail is on the National Register of Historic Places. Open 10 a.m. – 4 p.m., Wed. – Sat., 1-4 p.m. Sun., Apr. – Oct.

[www.thehistoricalsociety.org/Jail.htm](http://www.thehistoricalsociety.org/Jail.htm)



*Historic General Dodge House*

### **F Historic General Dodge House**

(712-322-2406): 605 3<sup>rd</sup> St. Council Bluffs. Built in 1869 for Civil War general and transcontinental railroad builder Grenville Dodge, this National Historic Landmark remains the city's architectural showpiece. Four blocks east of the Byway. Open 10 a.m. – 5 p.m., Tues. – Sat., 1–5 p.m. Sun. Closed Jan. and holidays.

[www.dodgehouse.org](http://www.dodgehouse.org)

## **Hitchcock Loop**

- This 27-mile loop on paved and gravel roads heads west on I-680 from its intersection with County Rd. L34. On the way is the I-680 Scenic Overlook, a good place to view the Hills and the Missouri River floodplain.
- At I-29, turn north and exit immediately at Exit 72 to enter the small community of Loveland.
- In Loveland, turn right (south) to take County Rd. L20 to the south which runs along the edge of the floodplain to Honey Creek where you enter the Hills. Less than 2 miles south of the small community of Honey Creek is the entrance to the Hitchcock Nature Area (see below in Byway Attractions). Continue south on County Rd. L20 to County Rd. L36 about ¾-mile away.
- At County Rd. L36, also called Coldwater Avenue, turn left (northeast) and follow this gravel road that winds through the Hills to return you to County Rd. L34 near the loop's start, about 8 miles away.
- Allow about 40 minutes drive time.

## **COUNCIL BLUFFS**

Centrally located in the Loess Hills, the community was called Kanessville when Mormons stopped here on their way west in the 1840s. In 1853, as hundreds of thousands of gold rushers and pioneers later made the city a crossroads to the west, it was renamed Council Bluffs, reflecting the title given the region by Lewis and Clark in 1804.

### **G Rails West Railroad Museum**

(712-323-5182): A former Rock Island depot with railroad memorabilia, the museum has a large HO-scale display with rolling stock and locomotives on the tracks outside. On the east side of the Byway near the South Expressway's 16th Ave. intersection. Open 10 a.m. – 4 p.m., Wed. – Sat., 1-4 p.m. Sun., Apr. 1 – Oct. 31.

[www.thehistoricalsociety.org/Depot.htm](http://www.thehistoricalsociety.org/Depot.htm)

### **H Wabash Trace Nature Trail**

Listed among the nation's top ten trails by Mountain Biking magazine, this 67-mile-long trail to Iowa's southern border. The trailhead is less than a mile south of the U.S. 275/Iowa 92 intersection and links to city trails.

[www.inhf.org/iowatrails/wabash-intro.htm](http://www.inhf.org/iowatrails/wabash-intro.htm)

### **I Lake Manawa State Park**

(712-366-0220): Recreation area with beach, campsites and a Dream Playground for children. The park is best accessed by going south of I-80/29 on the South Expressway (also called Iowa Hwy. 192) less than a mile to the intersection with South Omaha Bridge Rd. (also called U.S. 275). Turn right (west), drive ½-mile to S. 11th St., turn left and at the Y-intersection, turn right onto 3<sup>rd</sup> Avenue which leads around the west side of the lake to the park's entrance on the south side of the lake, nearly 3 miles away.

[www.iowadnr.com/parks/state\\_park\\_list/lake\\_manawa.html](http://www.iowadnr.com/parks/state_park_list/lake_manawa.html)



*Wabash Trace Nature Trail*





*Lewis and Clark Monument grounds, Council Bluffs*



*Southern Pottawattamie County near U.S. 275*

AREA ATTRACTIONS

**Carson**  
**Whispering Hills Vineyard and Winery**  
(712-484-3312): 43538 Cottonwood Rd.,  
Carson  
[www.whisperinghillsvineyards.com](http://www.whisperinghillsvineyards.com)

**Council Bluffs**  
**Ameristar Casino** (712-328-8888): I-29  
exit 52. Casino with slots, table games  
and cruises; hotel with restaurants, live  
entertainment and children’s center.  
[www.ameristar.com/council/index.asp](http://www.ameristar.com/council/index.asp)

**Harrah’s** (712-329-0600): I-29 exit  
53A. Casino with slots and table games,  
hotel, restaurants, health club and live  
entertainment. [www.harrahs.com/casinos/harrahs-council-bluffs/hotel-casino/property-home.shtml](http://www.harrahs.com/casinos/harrahs-council-bluffs/hotel-casino/property-home.shtml)

**Horseshoe Casino** (712-323-2500):  
I-29/I-80 exit 1B. Slot machines and table  
games, keno, live and simulcast greyhound  
races, simulcast horse races, restaurants,  
RV camping and live entertainment. [www.harrahs.com/casinos/horseshoe-council-bluffs/hotel-casino/property-home.shtml](http://www.harrahs.com/casinos/horseshoe-council-bluffs/hotel-casino/property-home.shtml)



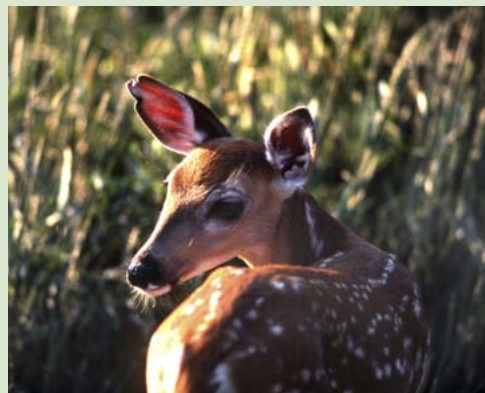
*Bayliss Park, Council Bluffs*

**Lewis and Clark Monument** (800-228-6878;  
712-328-4650): On ridges overlooking  
Council Bluffs, Omaha and the Missouri  
River Valley, this plaza honors the passage  
of Lewis and Clark in 1804 and 1806. <http://parksandrec.councilbluffs-ia.gov/parks.asp>

## Western Historic Trails Center

(712-366-4900): This center explains the history of the Oregon, California, Mormon and Lewis and Clark Trails. The center also has a gift shop and is an Iowa Welcome Center. Live country music you can listen to or join in, on Thurs. afternoons. Open 9 a.m. – 6 p.m. daily, summer; and 9 a.m. – 5 p.m. winter.

[www.state.ia.us/government/dca/shsi/sites/western\\_trails/western\\_trails.html](http://www.state.ia.us/government/dca/shsi/sites/western_trails/western_trails.html)



Loess Hills Wildlife

## Crescent

### Loess Hills Vineyard and Winery

(712-545-3054): 1120 Old Lincoln Hwy.  
[www.loesshillsvineyardandwinery.com](http://www.loesshillsvineyardandwinery.com)

## Mt. Crescent Ski Area (712-545-3850):

Ski Hill Rd. Downhill seasonal fun with rentals, lessons and tube runs.

[www.skicrescent.com](http://www.skicrescent.com)

## Minden

### Breezy Hills Vineyard and Winery

(712-485-2083): 31735 Tamarack Rd.,  
[www.breezyhills.com](http://www.breezyhills.com)

## Oakland

### Nishnabotna Historical Museum

(712-482-6802): Downtown; regional museum

## Shelby

### Carstens Memorial Farmstead

(712-323-2509): South of Shelby, Iowa. A 19th Century working farm on summer weekends, 1-4 p.m. and celebration on first weekend after Labor Day.

## Treynor

### Prairie Crossing Vineyard and Winery

(712-487-3812): 31506 Pioneer Trail,  
[www.prairiecrossingwine.com](http://www.prairiecrossingwine.com)

## Walnut

Iowa's largest group of antique dealers in century-old storefronts along brick streets.

## Visitor Center

[www.iowasantiquecity.com/welcome.php](http://www.iowasantiquecity.com/welcome.php)

## Omaha, Nebraska

### Durham Western Heritage Museum

(402-444-5071): Omaha history, Union Pacific Railroad cars, changing exhibits.  
[www.dwhm.org](http://www.dwhm.org)

**Henry Doorly Zoo** (402-733-8400): World's largest indoor jungle and desert, aquarium with glass tunnel, large nocturnal animal exhibit, aviary, IMAX Theater and more. Rated by Readers Digest as the nation's best zoo.

[www.omahazoo.com](http://www.omahazoo.com)

**Joslyn Art Museum** (402-342-3300): one of the best collections of art of the American West. [www.joslyn.org](http://www.joslyn.org)

**Old Market** Old warehouse district housing trendy restaurants, galleries, shops and condos. [www.omahaoldmarket.com](http://www.omahaoldmarket.com)

## Lauritzen Gardens (402-346-4002):

Omaha's botanical center with formal gardens, Japanese garden, prairie area, rose gardens, shade gardens, outside scale model railroad.

[www.omahabotanicalgardens.org/](http://www.omahabotanicalgardens.org/)

## SERVICES

**Loveland:** gas

**Honey Creek:** restaurant

**Crescent:** B&B, gas, restaurants, groceries

**Council Bluffs:** lodging, B&Bs, gas, restaurants, groceries, casinos, shopping, camping, multi-use trails, Wabash Trace Trailhead, bike rental.

**Hancock:** canoe rental

**Neola:** gas, restaurant, groceries

**Underwood:** lodging, gas, restaurant

**Treynor:** gas, restaurant, groceries

## INFORMATION

**Council Bluffs Convention and Visitors Bureau** (800-228-6878; 712-325-1000):

[www.councilbluffs-iowa.com/convention\\_and\\_visitors](http://www.councilbluffs-iowa.com/convention_and_visitors)

**Pottawattamie County Conservation Board** (712-328-5638):  
[www.pottcoconservation.com](http://www.pottcoconservation.com)

**Iowa Welcome Center Underwood** (712-566-2905) [underwc@qwest.net](mailto:underwc@qwest.net)

**Western Historic Trails Center and Iowa Welcome Center** (712-366-4900):

[www.iowahistory.org/sites/western\\_trails/western\\_trails.html#Western](http://www.iowahistory.org/sites/western_trails/western_trails.html#Western)



Mt. Crescent Ski Area