



Australian Government

Department of Infrastructure and Transport

Bureau of Infrastructure, Transport and Regional Economics

STATISTICAL REPORT



Aviation

Domestic aviation activity
June 2013

© Commonwealth of Australia 2013

ISSN: 1832 - 1968

Ownership of intellectual property rights in this publication

Unless otherwise noted, copyright (and any other intellectual property rights, if any) in this publication is owned by the Commonwealth of Australia (referred to below as the Commonwealth).

Disclaimer

The material contained in this publication is made available on the understanding that the Commonwealth is not providing professional advice, and that users exercise their own skill and care with respect to its use, and seek independent advice if necessary.

The Commonwealth makes no representations or warranties as to the contents or accuracy of the information contained in this publication. To the extent permitted by law, the Commonwealth disclaims liability to any person or organisation in respect of anything done, or omitted to be done, in reliance upon information contained in this publication.

Creative Commons licence

With the exception of (a) the Coat of Arms; and (b) the Department of Infrastructure's photos and graphics, copyright in this publication is licensed under a Creative Commons Attribution 3.0 Australia Licence.

Creative Commons Attribution 3.0 Australia Licence is a standard form licence agreement that allows you to copy, communicate and adapt this publication provided that you attribute the work to the Commonwealth and abide by the other licence terms. A summary of the licence terms is available from <http://creativecommons.org/licenses/by/3.0/au/deed.en>. The full licence terms are available from <http://creativecommons.org/licenses/by/3.0/au/legalcode>.

Use of the Coat of Arms

The Department of the Prime Minister and Cabinet sets the terms under which the Coat of Arms is used. Please refer to the Department's Commonwealth Coat of Arms and Government branding web page <http://www.dpmc.gov.au/guidelines/index.cfm#brand> and, in particular, the Guidelines on the use of the Commonwealth Coat of Arms publication.

An appropriate citation for this report is:

Bureau of Infrastructure, Transport and Regional Economics (BITRE), 2013, Domestic aviation activity, Statistical Report, BITRE, Canberra ACT.

Contact us

This publication is available in PDF format. All other rights are reserved, including in relation to any Departmental logos or trade marks which may exist. For enquiries regarding the licence and any use of this publication, please contact:

Bureau of Infrastructure, Transport and Regional Economics (BITRE)
Department of Infrastructure and Transport
GPO Box 501, Canberra ACT 2601, Australia
Telephone: (international) +61 2 6274 7210
Fax: (international) +61 2 6274 6855
Email: bitre@infrastructure.gov.au
Website: www.bitre.gov.au

Inquiries

Should you require additional information about the statistics contained in this publication:

Nebojsa Pavlovic

Telephone (02) 6274 6817 or Facsimile (02) 6274 7727

Electronic mail: AVSTATS@infrastructure.gov.au

Nebojsa.Pavlovic@infrastructure.gov.au

Web site: <http://www.bitre.gov.au/statistics/aviation/domestic.aspx>

FOREWORD

This report provides an overview of domestic (including regional and charter) commercial aviation activity in Australia for the month of June 2013.

The data cover revenue passengers carried by Australian-registered operators of scheduled regular public transport services over Australian flight stages and fixed-wing charter operators. These estimates include passengers carried between domestic airports on international flights operated by these carriers. The passengers carried refer to traffic on board by stages.

Estimates of passengers and aircraft movements for charter aviation are included in this publication, where BITRE confidentiality standards are met.

Individual routes shown are restricted to those with an average exceeding 8 000 passengers per month where two or more airlines operate in competition. For the month of June 2013 there were 62 such routes.

Information on the total network for the month of June 2013 and on the Regular Public Transport (RPT) network for the month of June 2013 is presented on page 2, with estimates for the year ended June 2013 presented on page 3.

Detailed information on the 62 individual routes can be found in the RPT summary pages 4–9 of this publication.

The top ten airports in terms of RPT passenger movements are shown on page 10. Data on domestic RPT cargo movements at the top five cargo airports are provided on page 11. The table includes cargo carried on passenger flights operated by the Qantas group (including Jetstar), Virgin Australia, Air North, Skippers and Skytrans as well as the cargo carried by dedicated freighter aircraft operated by Australian Air Express and Toll Priority.

The long-term trends for the top ten competitive RPT routes are presented graphically on pages 12–21.

Tables providing estimates of domestic charter aviation activity are shown on page 22. BITRE confidentiality standards restrict publication of detailed airport-level estimates for all Australian airports, with the exception of Perth Airport.

A list of definitions can be found on page 23.

This report was prepared by the Aviation Statistics Section of the Bureau of Infrastructure, Transport and Regional Economics with data provided by airlines.

Estimates are included where data were not available and data presented in this publication may contain revisions to previously published data.

Where figures have been rounded, discrepancies may occur between sums of component items and totals, and in percentage changes which are derived from figures prior to rounding.

CONTENTS

Highlights	1
Total network	2
RPT network	2
Top competitive routes	4
Top ten airports – passenger movements	10
Top five airports – cargo movements	11
Top ten routes	12
1. Melbourne – Sydney	12
2. Brisbane – Sydney	13
3. Brisbane – Melbourne	14
4. Gold Coast – Sydney	15
5. Melbourne – Perth	16
6. Adelaide – Melbourne	17
7. Perth – Sydney	18
8. Adelaide – Sydney	19
9. Gold Coast – Melbourne	20
10. Brisbane – Cairns	21
Domestic charter activity	22
Definitions	23

This page is intentionally left blank.

HIGHLIGHTS

There were 4.71 million passengers carried on Australian domestic commercial aviation (including regional and charter operations) in June 2013, an increase of 2.0 per cent on June 2012. For the month of June 2013 there were 56 373 aircraft trips, an increase of 2.7 per cent on the previous June.

4.51 million passengers were carried on RPT flights in June 2013, an increase of 1.7 per cent on June 2012. For the year ending June 2013 there were 57.13 million passengers, an increase of 3.9 per cent compared with the year ending June 2012.

RPT revenue passenger kilometres (RPKs) performed were 5.34 billion for the month, up 1.9 per cent compared with June 2012. Capacity, measured by available seat kilometres (ASKs), increased 5.1 per cent compared with June 2012 to a total of 7.08 billion.

With RPT capacity increasing at a faster rate than passenger traffic, the industry wide load factor (RPKs/ASKs) decreased from 77.8 per cent in June 2012 to 75.4 per cent in June 2013. Load factors on individual routes decreased on 47 of the 57 RPT routes for which data is available in both years.

For the month of June 2013, Melbourne – Sydney remained Australia's busiest RPT route with 631 460 passengers, an increase of 2.5 per cent compared with June 2012. It was followed by Brisbane – Sydney with 356 660 passengers (up 4.7 per cent) and Brisbane – Melbourne with 247 424 passengers (up 0.7 per cent).

The greatest percentage increase in RPT passenger numbers, compared to June 2012, was on the Melbourne – Sunshine Coast route (up 39.1 per cent). There were large increases on a number of other routes, including Newman – Perth (up 28.9 per cent), Ballina – Sydney (up 28.0 per cent), Coffs Harbour – Sydney (up 19.8 per cent), and Brisbane – Gladstone (up 14.4 per cent).

RPT routes with traffic decreases in June 2013 compared with June 2012, included Ayers Rock – Sydney (down 16.4 per cent), Perth – Port Headland (down 13.5 per cent), Geraldton – Perth (down 11.9 per cent), and Brisbane – Mackay (down 11.5 per cent).

In June 2013, Sydney remained Australia's busiest domestic airport with 1.97 million passenger movements, followed by Melbourne with 1.76 million passenger movements and Brisbane with 1.37 million passenger movements.

Total cargo movements at Australian airports on domestic RPT flights were 33.2 thousand tonnes in June 2013, a decrease of 5.0 per cent compared to June 2012. For the month of June 2013, Sydney was the busiest airport in terms of cargo movements (9.1 thousand tonnes) followed by Melbourne (8.7 thousand tonnes) and Brisbane (5.2 thousand tonnes).

Fixed-wing charter operators carried over 198 thousand passengers in June 2013, an increase of 9.6 per cent on June 2012. More than one third of all charter passengers in Australia took flights either to or from Perth Airport.

TOTAL NETWORK

Summary of monthly commercial aviation activity

	Jun 2012	Jun 2013	% Change
Total passengers carried (millions)	4.62	4.71	2.0
Aircraft trips (000s)	54.9	56.4	2.7

Note: Regular Public Transport and charter aviation activity

Charter data prior July 2011 not available, helicopter and leisure charter flights not included

RPT NETWORK

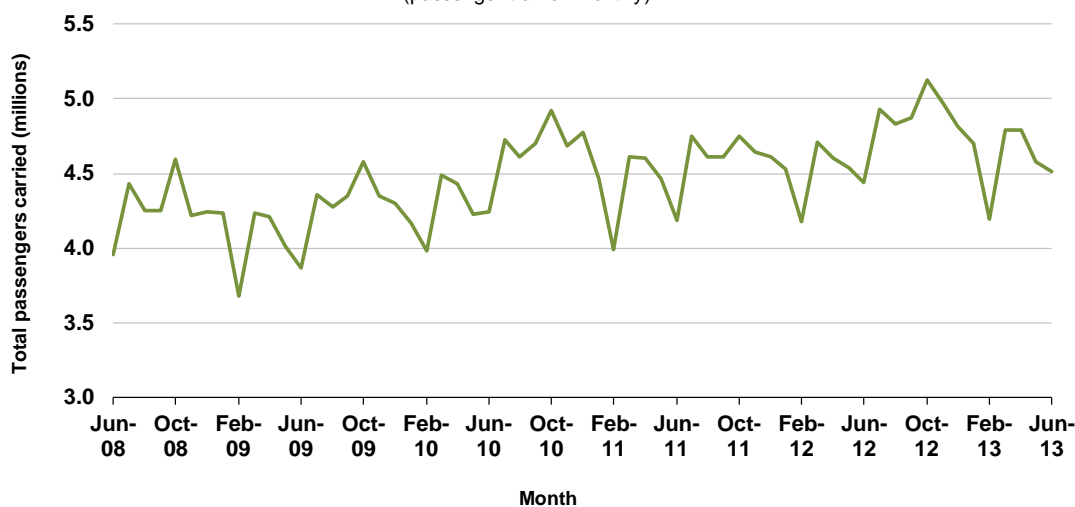
Summary of monthly RPT activity

	Jun 2012	Jun 2013	% Change
Total passengers carried (millions)	4.44	4.51	1.7
Revenue passenger kilometres (billions)	5.24	5.34	1.9
Available seats (millions)	5.85	6.16	5.3
Available seat kilometres (billions)	6.74	7.08	5.1
Load factor %	77.8	75.4	-2.4 *
Aircraft trips (000s)	50.3	51.9	3.0

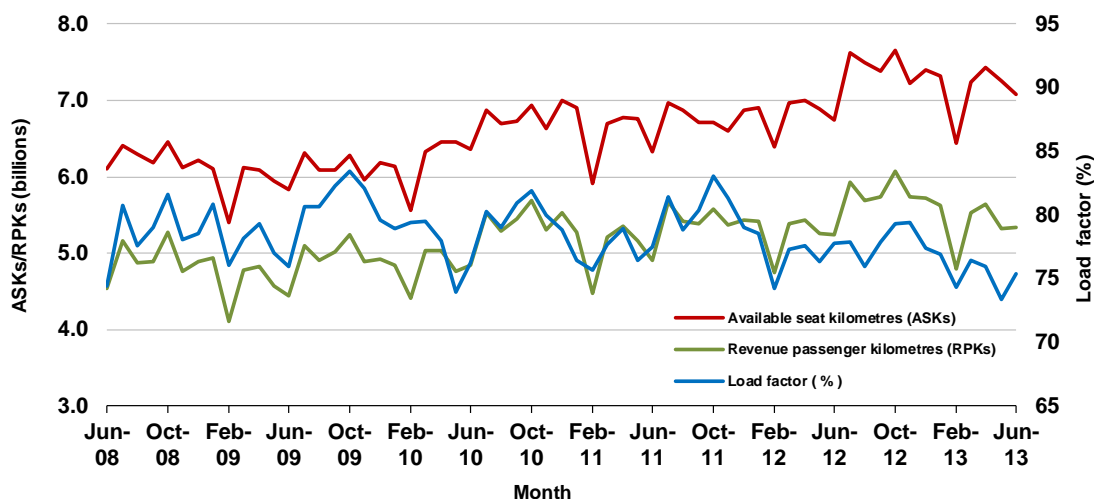
* percentage point difference

Domestic RPT passenger traffic

(passenger traffic - monthly)



RPT Network utilisation

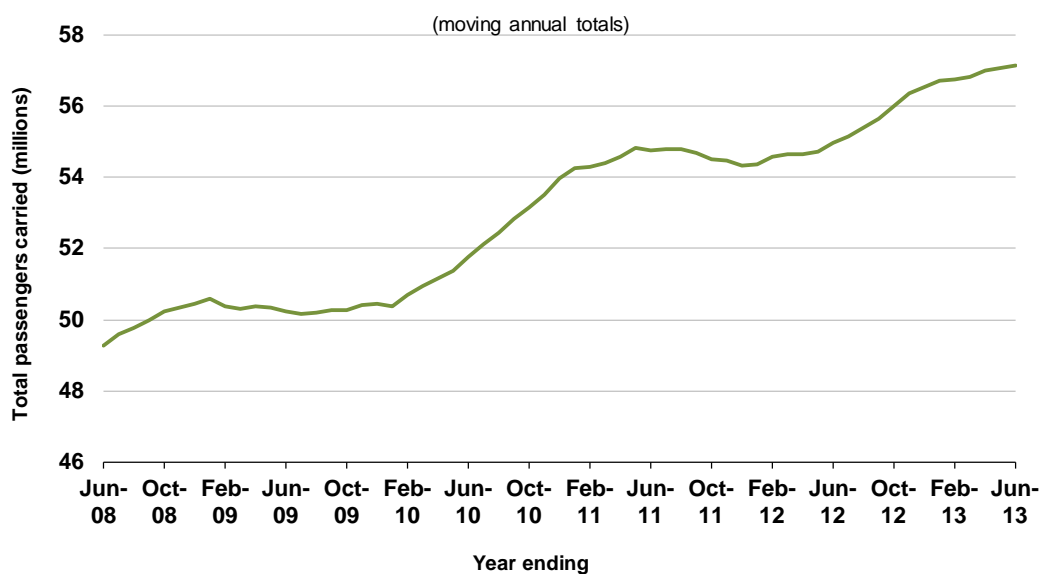


Summary of annual RPT activity

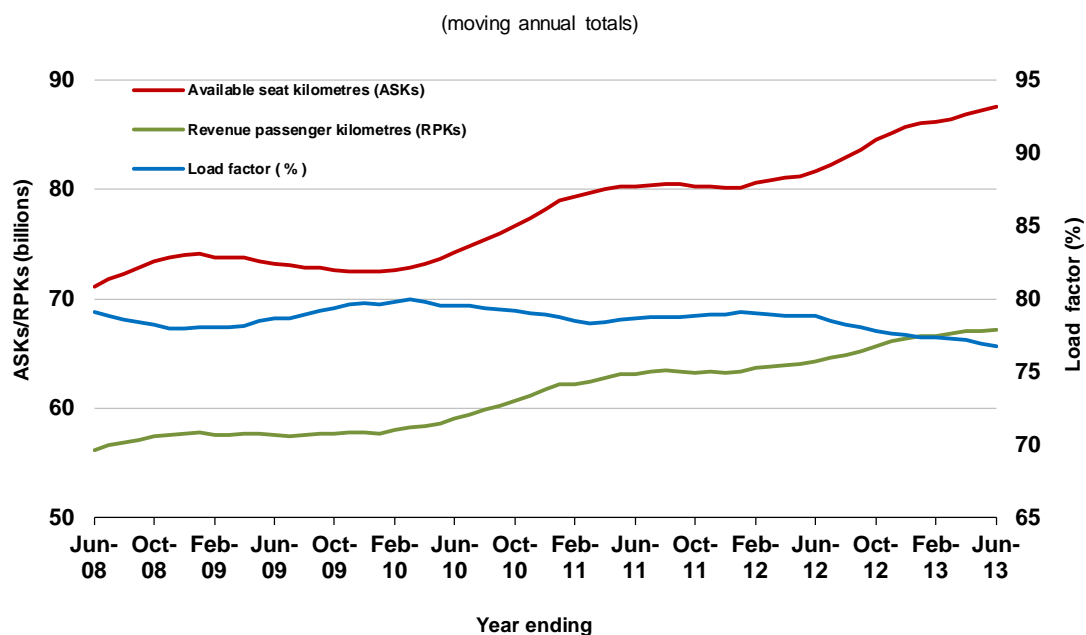
	YE Jun 2012	YE Jun 2013	% Change
Total passengers carried (millions)	54.98	57.13	3.9
Revenue passenger kilometres (billions)	64.33	67.19	4.4
Available seats (millions)	71.08	76.67	7.9
Available seat kilometres (billions)	81.62	87.56	7.3
Load factor %	78.8	76.7	-2.1 *
Aircraft trips (000s)	615.1	641.7	4.3

* percentage point difference

Domestic RPT passenger traffic



RPT Network utilisation



TOP COMPETITIVE ROUTES

Table 1: Passengers carried (000s) — annual activity

	City-Pair	YE Jun 2012	YE Jun 2013	% Change
1	Melbourne - Sydney	7 725.4	8 210.7	6.3
2	Brisbane - Sydney	4 352.2	4 426.2	1.7
3	Brisbane - Melbourne	3 152.2	3 162.5	0.3
4	Gold Coast - Sydney	2 250.8	2 544.7	13.1
5	Melbourne - Perth	1 924.0	2 216.5	15.2
6	Adelaide - Melbourne	2 071.0	2 114.8	2.1
7	Perth - Sydney	1 785.4	1 804.8	1.1
8	Adelaide - Sydney	1 709.6	1 753.6	2.6
9	Gold Coast - Melbourne	1 699.7	1 735.9	2.1
10	Hobart - Melbourne	1 137.9	1 337.2	17.5
11	Brisbane - Cairns	1 143.3	1 191.9	4.2
12	Canberra - Sydney	1 058.4	1 041.3	-1.6
13	Canberra - Melbourne	1 026.3	1 000.6	-2.5
14	Brisbane - Perth	918.7	981.4	6.8
15	Brisbane - Townsville	996.3	965.9	-3.0
16	Cairns - Sydney	922.4	944.8	2.4
17	Brisbane - Mackay	969.9	916.5	-5.5
18	Launceston - Melbourne	801.1	861.7	7.6
19	Karratha - Perth	739.4	763.0	3.2
20	Adelaide - Brisbane	693.6	743.8	7.2
21	Cairns - Melbourne	506.8	631.9	24.7
22	Adelaide - Perth	601.3	624.0	3.8
23	Brisbane - Rockhampton	656.9	623.9	-5.0
24	Brisbane - Canberra	639.7	585.9	-8.4
25	Brisbane - Newcastle	601.2	579.7	-3.6
26	Hobart - Sydney	464.9	494.9	6.4
27	Perth - Port Hedland	440.8	477.0	8.2
28	Sunshine Coast - Sydney	457.1	461.9	1.0
29	Brisbane - Gladstone	349.7	441.9	26.4
30	Newman - Perth	299.9	438.9	46.4
31	Melbourne - Newcastle	428.1	430.0	0.4
32	Brisbane - Darwin	370.3	373.6	0.9
33	Darwin - Sydney	67.2	358.8	434.3 (a)
34	Melbourne - Sunshine Coast	333.3	338.8	1.7
35	Coffs Harbour - Sydney	313.0	338.2	8.0
36	Broome - Perth	313.6	322.4	2.8
37	Darwin - Melbourne	289.7	296.3	2.3
38	Brisbane - Emerald	111.9	296.2	164.7 (b)
39	Ballina - Sydney	266.3	293.2	10.1
40	Launceston - Sydney	219.6	247.4	12.6
41	Albury - Sydney	248.2	240.8	-3.0
42	Brisbane - Proserpine	215.2	234.8	9.1
43	Kalgoorlie - Perth	240.1	233.9	-2.6
44	Hamilton Island - Sydney	191.3	201.2	5.2
45	Melbourne - Mildura	196.7	197.4	0.3

Table 1: (continued) Passengers carried (000s) — annual activity

	City-Pair	YE Jun 2012	YE Jun 2013	% Change
46	Adelaide - Port Lincoln	193.6	195.9	1.2
47	Port Macquarie - Sydney	201.5	192.9	-4.2
48	Adelaide - Gold Coast	184.5	189.9	2.9
49	Sydney - Townsville	185.4	184.1	-0.7
50	Sydney - Wagga Wagga	180.7	179.3	-0.7
51	Adelaide - Canberra	182.4	178.2	-2.3
52	Dubbo - Sydney	175.2	172.5	-1.5
53	Cairns - Townsville	188.3	170.0	-9.7
54	Darwin - Perth	162.1	165.8	2.3
55	Brisbane - Hamilton Island	163.6	155.3	-5.1
56	Ayers Rock - Sydney	153.1	148.7	-2.9
57	Brisbane - Mount Isa	..	145.7	NA (c)
58	Geraldton - Perth	80.0	132.9	66.1 (d)
59	Brisbane - Moranbah	..	33.5	NA (e)
60	Bundaberg - Brisbane	..	26.8	NA (f)
61	Alice Springs - Melbourne	..	23.7	NA (g)
62	Alice Springs - Sydney	..	12.9	NA (h)
	Total domestic network	54 984.7	57 133.7	3.9

(a) Darwin - Sydney route included from May 2012, prior data not shown.

(b) Brisbane - Emerald route included from September 2012, prior data not shown.

(c) Brisbane - Mount Isa route included from September 2012, prior data not shown.

(d) Geraldton - Perth route included from December 2011, prior data not shown.

(e) Brisbane - Moranbah route included from May 2013, prior data not shown.

(f) Bundaberg - Brisbane route included from May 2013, prior data not shown.

(g) Alice Springs - Melbourne route included from May 2013, prior data not shown.

(h) Alice Springs - Sydney route included from June 2013, prior data not shown.

Table 2: Passengers carried (000s) — monthly activity

	City-Pair	Jun 2012	Jun 2013	% Change
1	Melbourne - Sydney	616.3	631.5	2.5
2	Brisbane - Sydney	340.7	356.7	4.7
3	Brisbane - Melbourne	245.8	247.4	0.7
4	Gold Coast - Sydney	168.5	184.4	9.4
5	Melbourne - Perth	167.5	167.0	-0.3
6	Adelaide - Melbourne	164.6	166.7	1.3
7	Perth - Sydney	137.4	131.4	-4.4
8	Adelaide - Sydney	130.1	128.0	-1.6
9	Gold Coast - Melbourne	129.6	120.7	-6.9
10	Brisbane - Cairns	100.1	103.9	3.9
11	Hobart - Melbourne	88.6	97.6	10.2
12	Canberra - Sydney	91.8	90.6	-1.3
13	Canberra - Melbourne	80.7	83.8	3.9
14	Cairns - Sydney	77.1	83.1	7.8
15	Brisbane - Townsville	86.4	80.3	-7.0
16	Brisbane - Perth	70.6	77.7	10.1
17	Brisbane - Mackay	83.7	74.1	-11.5
18	Karratha - Perth	62.7	59.6	-4.9
19	Launceston - Melbourne	61.9	58.1	-6.1
20	Cairns - Melbourne	50.7	56.9	12.3
21	Adelaide - Brisbane	54.5	56.8	4.3
22	Brisbane - Rockhampton	54.3	52.9	-2.7
23	Brisbane - Canberra	49.7	50.8	2.2
24	Brisbane - Newcastle	47.0	45.3	-3.6
25	Adelaide - Perth	46.7	44.6	-4.6
26	Newman - Perth	30.4	39.2	28.9
27	Brisbane - Gladstone	33.7	38.6	14.4
28	Perth - Port Hedland	41.9	36.2	-13.5
29	Darwin - Sydney	37.2	36.2	-2.7
30	Brisbane - Darwin	34.5	34.5	0.0
31	Sunshine Coast - Sydney	33.8	34.0	0.6
32	Hobart - Sydney	31.3	33.1	5.8
33	Melbourne - Newcastle	31.0	31.8	2.5
34	Melbourne - Sunshine Coast	22.3	31.0	39.1
35	Broome - Perth	32.5	30.3	-6.9
36	Coffs Harbour - Sydney	23.8	28.5	19.8
37	Darwin - Melbourne	25.2	25.8	2.2
38	Brisbane - Emerald	23.8	23.8	0.0
39	Ballina - Sydney	18.1	23.2	28.0
40	Albury - Sydney	20.7	18.5	-10.6
41	Brisbane - Proserpine	18.2	17.7	-2.8
42	Kalgoorlie - Perth	19.1	17.6	-8.1
43	Launceston - Sydney	15.1	16.4	8.7
44	Brisbane - Moranbah	..	16.1	NA (a)
45	Melbourne - Mildura	16.1	15.9	-0.9
46	Sydney - Townsville	16.7	15.8	-5.7
47	Port Macquarie - Sydney	15.7	15.2	-2.8
48	Darwin - Perth	15.0	15.2	1.1
49	Adelaide - Gold Coast	13.4	15.1	12.5
50	Sydney - Wagga Wagga	15.1	14.8	-2.5
51	Dubbo - Sydney	15.3	14.7	-3.7
52	Brisbane - Mount Isa	..	14.7	NA (b)
53	Adelaide - Canberra	13.5	14.6	7.8
54	Cairns - Townsville	15.6	14.4	-7.5
55	Hamilton Island - Sydney	13.4	14.3	6.3
56	Adelaide - Port Lincoln	14.9	14.1	-5.3
57	Bundaberg - Brisbane	..	13.3	NA (c)
58	Alice Springs - Sydney	..	12.9	NA (d)
59	Alice Springs - Melbourne	..	12.6	NA (e)
60	Brisbane - Hamilton Island	11.3	11.2	-1.2
61	Geraldton - Perth	11.7	10.3	-11.9
62	Ayers Rock - Sydney	11.7	9.8	-16.4
	Total domestic network	4 438.7	4 513.2	1.7

(a) Brisbane - Moranbah route included from May 2013, prior data not shown.

(b) Brisbane - Mount Isa route included from September 2012, prior data not shown.

(c) Bundaberg - Brisbane route included from May 2013, prior data not shown.

(d) Alice Springs - Sydney route included from June 2013, prior data not shown.

(e) Alice Springs - Melbourne route included from May 2013, prior data not shown.

Table 3: Available seats (000s) — monthly activity

	City-Pair	Jun 2012	Jun 2013	% Change
1	Melbourne - Sydney	799.3	798.4	-0.1
2	Brisbane - Sydney	410.3	442.2	7.8
3	Brisbane - Melbourne	302.5	323.8	7.0
4	Gold Coast - Sydney	212.3	241.8	13.9
5	Melbourne - Perth	217.3	226.8	4.3
6	Adelaide - Melbourne	201.2	221.8	10.2
7	Perth - Sydney	178.7	170.7	-4.5
8	Adelaide - Sydney	172.9	170.6	-1.3
9	Gold Coast - Melbourne	157.4	144.0	-8.5
10	Brisbane - Cairns	115.3	123.1	6.8
11	Hobart - Melbourne	113.7	127.7	12.3
12	Canberra - Sydney	127.9	138.9	8.6
13	Canberra - Melbourne	115.5	125.4	8.6
14	Cairns - Sydney	93.5	107.0	14.4
15	Brisbane - Townsville	102.0	105.3	3.2
16	Brisbane - Perth	86.7	102.3	18.0
17	Brisbane - Mackay	104.8	101.9	-2.8
18	Karratha - Perth	99.3	96.2	-3.1
19	Launceston - Melbourne	83.8	85.6	2.1
20	Cairns - Melbourne	59.2	67.1	13.3
21	Adelaide - Brisbane	68.2	74.8	9.7
22	Brisbane - Rockhampton	73.8	73.2	-0.7
23	Brisbane - Canberra	64.5	70.8	9.8
24	Brisbane - Newcastle	56.2	57.6	2.5
25	Adelaide - Perth	60.1	61.5	2.2
26	Newman - Perth	46.4	61.7	33.1
27	Brisbane - Gladstone	52.8	60.8	15.3
28	Perth - Port Hedland	63.2	59.5	-5.9
29	Darwin - Sydney	43.5	42.5	-2.3
30	Brisbane - Darwin	37.3	37.4	0.4
31	Sunshine Coast - Sydney	43.6	45.0	3.0
32	Hobart - Sydney	42.0	46.6	11.1
33	Melbourne - Newcastle	42.1	44.6	5.8
34	Melbourne - Sunshine Coast	27.2	40.3	48.1
35	Broome - Perth	41.0	40.9	-0.3
36	Coffs Harbour - Sydney	31.9	40.6	27.5
37	Darwin - Melbourne	29.3	29.5	0.6
38	Brisbane - Emerald	39.7	40.5	2.0
39	Ballina - Sydney	23.3	34.2	46.8
40	Albury - Sydney	30.7	27.4	-10.7
41	Brisbane - Proserpine	22.4	22.9	2.6
42	Kalgoorlie - Perth	27.2	37.0	35.9
43	Launceston - Sydney	19.9	25.8	29.4
44	Brisbane - Moranbah	..	30.3	NA (a)
45	Melbourne - Mildura	24.6	23.8	-3.4
46	Sydney - Townsville	18.9	19.0	0.4
47	Port Macquarie - Sydney	22.2	21.2	-4.4
48	Darwin - Perth	18.3	18.0	-1.4
49	Adelaide - Gold Coast	16.9	21.8	28.5
50	Sydney - Wagga Wagga	22.7	24.2	6.5
51	Dubbo - Sydney	21.6	24.5	13.5
52	Brisbane - Mount Isa	..	22.6	NA (b)
53	Adelaide - Canberra	19.7	22.4	13.8
54	Cairns - Townsville	23.8	24.7	3.7
55	Hamilton Island - Sydney	20.7	20.5	-0.8
56	Adelaide - Port Lincoln	27.4	26.9	-1.7
57	Bundaberg - Brisbane	..	17.7	NA (c)
58	Alice Springs - Sydney	..	16.0	NA (d)
59	Alice Springs - Melbourne	..	16.2	NA (e)
60	Brisbane - Hamilton Island	16.3	16.8	3.1
61	Geraldton - Perth	18.0	18.6	2.9
62	Ayers Rock - Sydney	16.9	12.8	-24.1
	Total domestic network	5 853.9	6 164.6	5.3

(a) Brisbane - Moranbah route included from May 2013, prior data not shown.

(b) Brisbane - Mount Isa route included from September 2012, prior data not shown.

(c) Bundaberg - Brisbane route included from May 2013, prior data not shown.

(d) Alice Springs - Sydney route included from June 2013, prior data not shown.

(e) Alice Springs - Melbourne route included from May 2013, prior data not shown.

Table 4: Load factors (%) — monthly activity

	City-Pair	Jun 2012	Jun 2013	% Point diff
1	Melbourne - Sydney	77.1	79.1	2.0
2	Brisbane - Sydney	83.0	80.6	-2.4
3	Brisbane - Melbourne	81.2	76.4	-4.8
4	Gold Coast - Sydney	79.4	76.3	-3.1
5	Melbourne - Perth	77.1	73.7	-3.4
6	Adelaide - Melbourne	81.8	75.2	-6.6
7	Perth - Sydney	76.9	77.0	0.1
8	Adelaide - Sydney	75.2	75.0	-0.2
9	Gold Coast - Melbourne	82.3	83.8	1.5
10	Brisbane - Cairns	86.8	84.4	-2.4
11	Hobart - Melbourne	77.9	76.4	-1.5
12	Canberra - Sydney	71.7	65.2	-6.5
13	Canberra - Melbourne	69.9	66.9	-3.0
14	Cairns - Sydney	82.4	77.7	-4.7
15	Brisbane - Townsville	84.7	76.3	-8.4
16	Brisbane - Perth	81.4	76.0	-5.4
17	Brisbane - Mackay	79.9	72.7	-7.2
18	Karratha - Perth	63.1	61.9	-1.2
19	Launceston - Melbourne	73.8	67.9	-5.9
20	Cairns - Melbourne	85.6	84.9	-0.7
21	Adelaide - Brisbane	79.9	75.9	-4.0
22	Brisbane - Rockhampton	73.6	72.2	-1.4
23	Brisbane - Canberra	77.1	71.7	-5.4
24	Brisbane - Newcastle	83.5	78.6	-4.9
25	Adelaide - Perth	77.7	72.6	-5.1
26	Newman - Perth	65.6	63.5	-2.1
27	Brisbane - Gladstone	63.9	63.5	-0.4
28	Perth - Port Hedland	66.2	60.9	-5.3
29	Darwin - Sydney	85.6	85.3	-0.3
30	Brisbane - Darwin	92.6	92.3	-0.3
31	Sunshine Coast - Sydney	77.5	75.7	-1.8
32	Hobart - Sydney	74.6	71.1	-3.5
33	Melbourne - Newcastle	73.7	71.3	-2.4
34	Melbourne - Sunshine Coast	81.8	76.7	-5.1
35	Broome - Perth	79.3	74.0	-5.3
36	Coffs Harbour - Sydney	74.6	70.1	-4.5
37	Darwin - Melbourne	86.0	87.3	1.3
38	Brisbane - Emerald	60.1	58.9	-1.2
39	Ballina - Sydney	77.9	67.9	-10.0
40	Albury - Sydney	67.4	67.4	0.0
41	Brisbane - Proserpine	81.3	77.0	-4.3
42	Kalgoorlie - Perth	70.4	47.6	-22.8
43	Launceston - Sydney	76.0	63.8	-12.2
44	Brisbane - Moranbah	..	53.2	NA (a)
45	Melbourne - Mildura	65.1	66.8	1.7
46	Sydney - Townsville	88.5	83.2	-5.3
47	Port Macquarie - Sydney	70.7	71.9	1.2
48	Darwin - Perth	82.2	84.3	2.1
49	Adelaide - Gold Coast	79.1	69.2	-9.9
50	Sydney - Wagga Wagga	66.7	61.0	-5.7
51	Dubbo - Sydney	70.7	60.0	-10.7
52	Brisbane - Mount Isa	..	64.9	NA (b)
53	Adelaide - Canberra	68.9	65.2	-3.7
54	Cairns - Townsville	65.4	58.4	-7.0
55	Hamilton Island - Sydney	65.0	69.6	4.6
56	Adelaide - Port Lincoln	54.3	52.3	-2.0
57	Bundaberg - Brisbane	..	75.2	NA (c)
58	Alice Springs - Sydney	..	80.5	NA (d)
59	Alice Springs - Melbourne	..	77.8	NA (e)
60	Brisbane - Hamilton Island	69.6	66.7	-2.9
61	Geraldton - Perth	65.0	55.6	-9.4
62	Ayers Rock - Sydney	69.2	76.3	7.1
	Total domestic network	77.8	75.4	-2.4

(a) Brisbane - Moranbah route included from May 2013, prior data not shown.

(b) Brisbane - Mount Isa route included from September 2012, prior data not shown.

(c) Bundaberg - Brisbane route included from May 2013, prior data not shown.

(d) Alice Springs - Sydney route included from June 2013, prior data not shown.

(e) Alice Springs - Melbourne route included from May 2013, prior data not shown.

Table 5: Aircraft trips — monthly activity

	City-Pair	Jun 2012	Jun 2013	% Change
1	Melbourne - Sydney	4 184	4 243	1.4
2	Brisbane - Sydney	2 281	2 497	9.5
3	Brisbane - Melbourne	1 755	1 908	8.7
4	Gold Coast - Sydney	1 216	1 387	14.1
5	Melbourne - Perth	985	957	-2.8
6	Adelaide - Melbourne	1 265	1 346	6.4
7	Perth - Sydney	746	687	-7.9
8	Adelaide - Sydney	996	992	-0.4
9	Gold Coast - Melbourne	873	783	-10.3
10	Brisbane - Cairns	726	755	4.0
11	Hobart - Melbourne	647	770	19.0
12	Canberra - Sydney	1 444	1 598	10.7
13	Canberra - Melbourne	837	896	7.0
14	Cairns - Sydney	507	583	15.0
15	Brisbane - Townsville	647	665	2.8
16	Brisbane - Perth	400	451	12.8
17	Brisbane - Mackay	754	714	-5.3
18	Karratha - Perth	652	630	-3.4
19	Launceston - Melbourne	594	628	5.7
20	Cairns - Melbourne	324	369	13.9
21	Adelaide - Brisbane	430	468	8.8
22	Brisbane - Rockhampton	730	788	7.9
23	Brisbane - Canberra	492	517	5.1
24	Brisbane - Newcastle	461	471	2.2
25	Adelaide - Perth	393	383	-2.5
26	Newman - Perth	308	398	29.2
27	Brisbane - Gladstone	674	719	6.7
28	Perth - Port Hedland	414	403	-2.7
29	Darwin - Sydney	223	224	0.4
30	Brisbane - Darwin	186	186	0.0
31	Sunshine Coast - Sydney	250	252	0.8
32	Hobart - Sydney	286	279	-2.4
33	Melbourne - Newcastle	242	261	7.9
34	Melbourne - Sunshine Coast	159	226	42.1
35	Broome - Perth	323	328	1.5
36	Coffs Harbour - Sydney	385	450	16.9
37	Darwin - Melbourne	157	168	7.0
38	Brisbane - Emerald	506	520	2.8
39	Ballina - Sydney	178	235	32.0
40	Albury - Sydney	538	545	1.3
41	Brisbane - Proserpine	150	140	-6.7
42	Kalgoorlie - Perth	189	274	45.0
43	Launceston - Sydney	120	153	27.5
44	Brisbane - Moranbah	..	429	NA (a)
45	Melbourne - Mildura	402	392	-2.5
46	Sydney - Townsville	108	107	-0.9
47	Port Macquarie - Sydney	370	370	0.0
48	Darwin - Perth	110	110	0.0
49	Adelaide - Gold Coast	112	128	14.3
50	Sydney - Wagga Wagga	450	478	6.2
51	Dubbo - Sydney	539	524	-2.8
52	Brisbane - Mount Isa	..	151	NA (b)
53	Adelaide - Canberra	145	181	24.8
54	Cairns - Townsville	384	412	7.3
55	Hamilton Island - Sydney	117	116	-0.9
56	Adelaide - Port Lincoln	588	583	-0.9
57	Bundaberg - Brisbane	..	290	NA (c)
58	Alice Springs - Sydney	..	93	NA (d)
59	Alice Springs - Melbourne	..	94	NA (e)
60	Brisbane - Hamilton Island	94	96	2.1
61	Geraldton - Perth	280	294	5.0
62	Ayers Rock - Sydney	120	98	-18.3
	Total domestic network	50 345	51 857	3.0

(a) Brisbane - Moranbah route included from May 2013, prior data not shown.

(b) Brisbane - Mount Isa route included from September 2012, prior data not shown.

(c) Bundaberg - Brisbane route included from May 2013, prior data not shown.

(d) Alice Springs - Sydney route included from June 2013, prior data not shown.

(e) Alice Springs - Melbourne route included from May 2013, prior data not shown.

TOP TEN AIRPORTS – PASSENGER MOVEMENTS

Table 6: Top ten airports, RPT passenger movements (000s) - annual activity

Airport	YE Jun 2012	YE Jun 2013	% Change	% of Total
1 Sydney	24 204.1	25 288.1	4.5	22.1
2 Melbourne	21 419.8	22 711.5	6.0	19.9
3 Brisbane	16 443.7	16 790.7	2.1	14.7
4 Perth	8 529.6	9 091.1	6.6	8.0
5 Adelaide	6 348.5	6 495.0	2.3	5.7
6 Gold Coast	4 620.0	4 956.3	7.3	4.3
7 Cairns	3 564.8	3 702.0	3.8	3.2
8 Canberra	3 159.0	3 015.5	-4.5	2.6
9 Hobart	1 814.6	2 026.6	11.7	1.8
10 Darwin	1 824.8	1 809.7	-0.8	1.6
Total top ten airports	91 929.0	95 886.5	4.3	83.9
Total domestic network	109 969.4	114 267.4	3.9	100.0

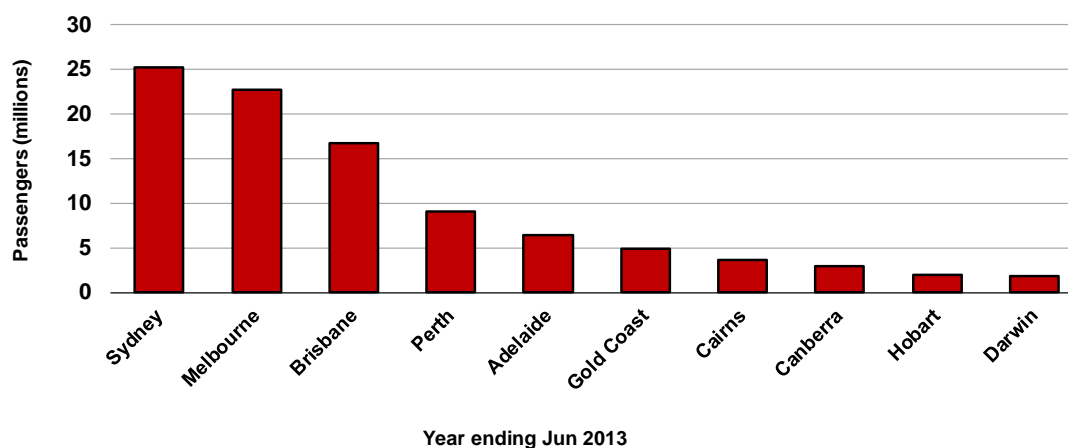
Table 7: Top ten airports, RPT passenger movements (000s) - monthly activity

Airport	Jun 2012	Jun 2013	% Change	% of Total
1 Sydney	1 915.2	1 968.2	2.8	21.8
2 Melbourne	1 714.8	1 759.9	2.6	19.5
3 Brisbane	1 338.0	1 370.5	2.4	15.2
4 Perth	715.6	700.1	-2.2	7.8
5 Adelaide	497.1	497.2	0.0	5.5
6 Gold Coast	345.5	357.4	3.4	4.0
7 Cairns	304.6	321.6	5.6	3.6
8 Canberra	252.0	252.5	0.2	2.8
9 Darwin	170.8	171.0	0.1	1.9
10 Hobart	134.7	142.7	5.9	1.6
Total top ten airports	7 388.2	7 541.1	2.1	83.5
Total domestic network	8 877.5	9 026.4	1.7	100.0

Note: Airport passenger movement numbers are the sum of passenger arrivals and departures at each airport.

Top ten airports, passenger movements

(Domestic and regional passenger traffic - traffic on board)



TOP FIVE AIRPORTS – CARGO MOVEMENTS

Table 8: Top five airports, domestic RPT cargo movements (000s tonnes) - annual activity

Airport	YE Jun 2012	YE Jun 2013	% Change	% of Total
1 Sydney	128.2	118.1	-7.9	27.5
2 Melbourne	118.5	112.9	-4.7	26.2
3 Brisbane	77.1	67.4	-12.5	15.7
4 Perth	55.6	49.3	-11.4	11.5
5 Adelaide	29.4	28.4	-3.5	6.6
Total top five airports	408.7	376.1	-8.0	87.5
Total domestic network	472.9	430.0	-9.1	100.0

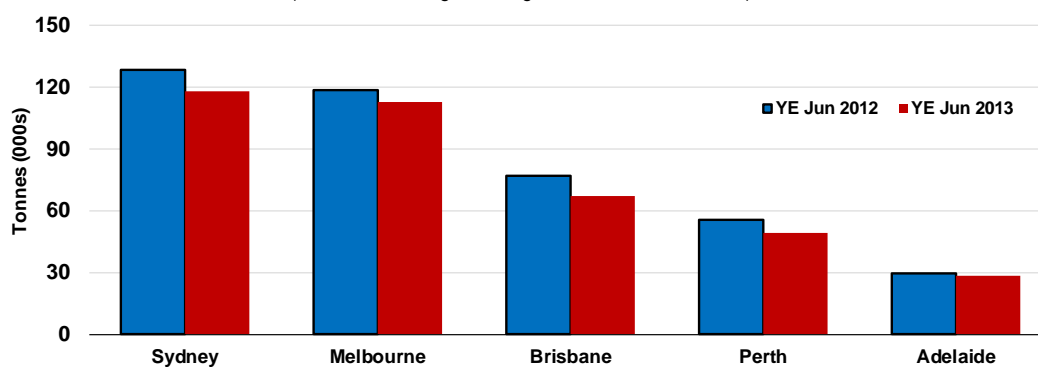
Table 9: Top five airports, domestic RPT cargo movements (000s tonnes) - monthly activity

Airport	Jun 2012	Jun 2013	% Change	% of Total
1 Sydney	9.4	9.1	-3.1	27.6
2 Melbourne	8.8	8.7	-1.5	26.2
3 Brisbane	5.3	5.2	-2.1	15.7
4 Perth	4.2	3.7	-10.5	11.3
5 Adelaide	2.3	2.2	-2.8	6.7
Total top five airports	30.1	29.0	-3.5	87.5
Total domestic network	34.9	33.2	-5.0	100.0

Note: Airport cargo tonnes are the sum of cargo tonnes on arrivals and departures at each airport.

Top five airports, cargo movements

(Domestic and regional cargo traffic - traffic on board)



TOP TEN ROUTES

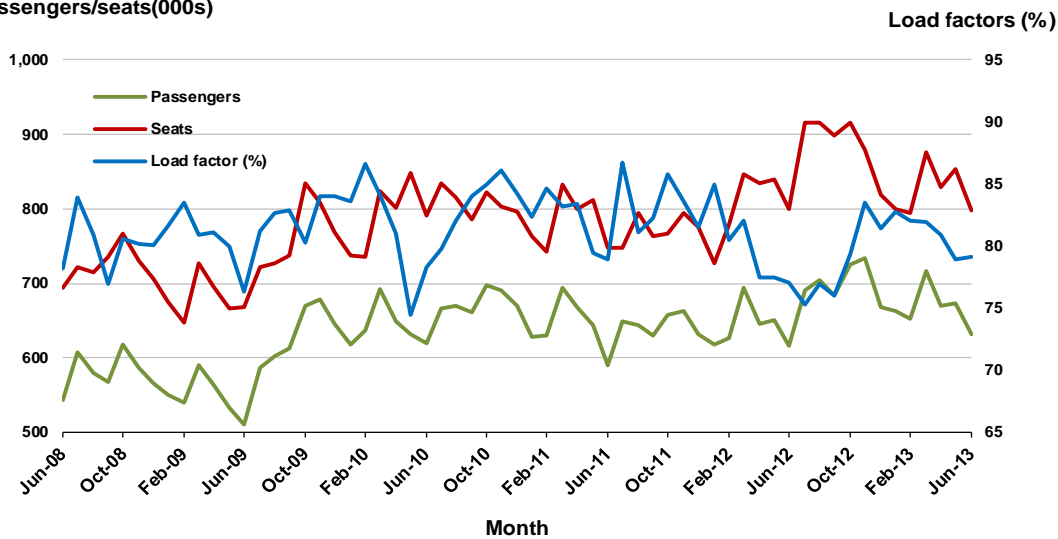
1. Melbourne - Sydney

Monthly data

	Jun 2012	Jun 2013	% Change
Passengers carried (000s)	616.3	631.5	2.5
Seats (000s)	799.3	798.4	-0.1
Load factor %	77.1	79.1	2.0 *
Aircraft trips	4 184	4 243	1.4

* percentage point difference

Passengers/seats(000s)

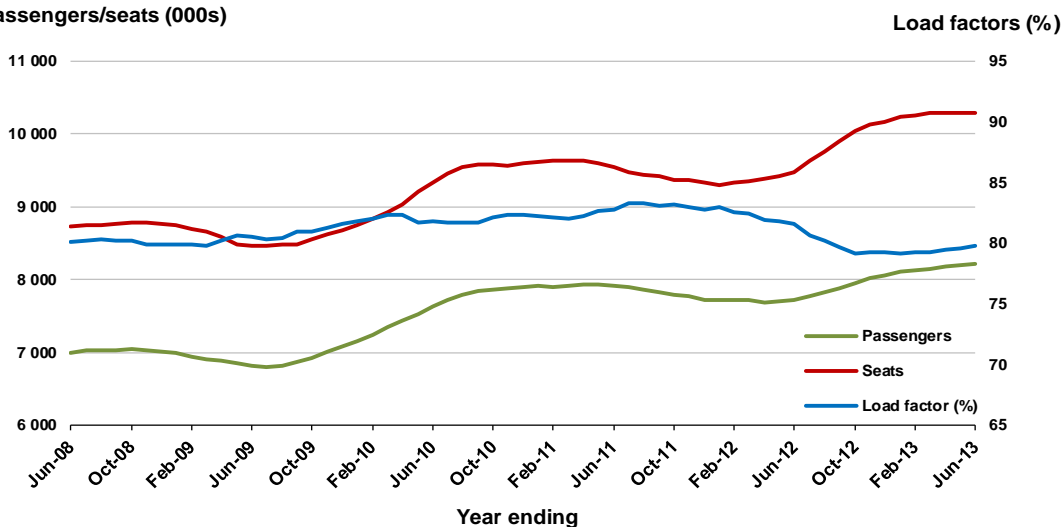


Moving annual data

	YE Jun 2012	YE Jun 2013	% Change
Passengers carried (000s)	7 725.4	8 210.7	6.3
Seats (000s)	9 468.2	10 295.0	8.7
Load factor %	81.6	79.8	-1.8 *
Aircraft trips	50 347	53 724	6.7

* percentage point difference

Passengers/seats (000s)

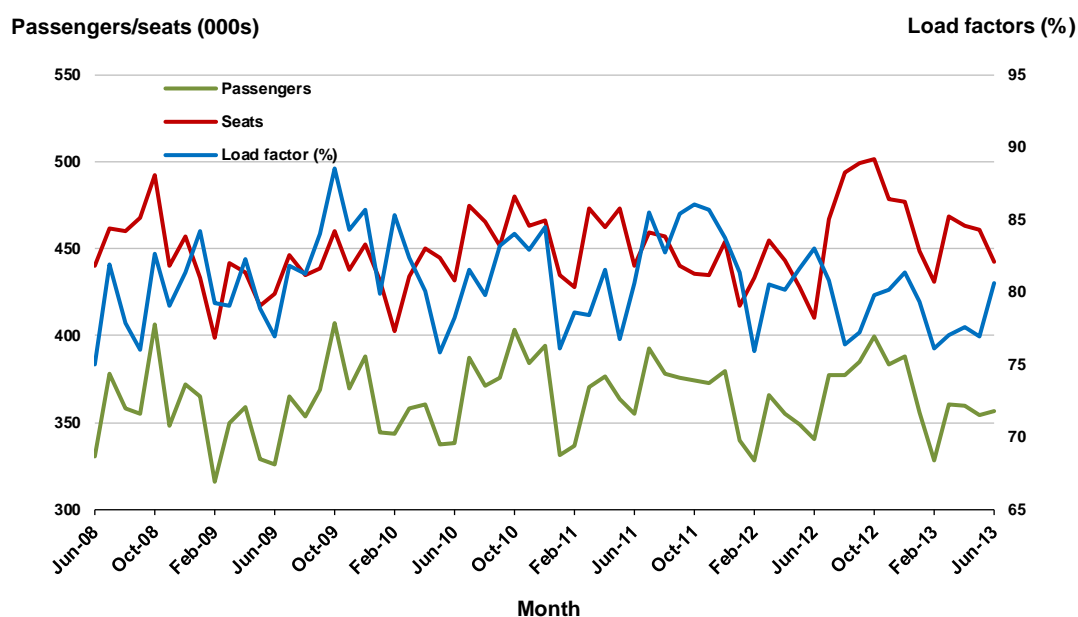


2. Brisbane - Sydney

Monthly data

	Jun 2012	Jun 2013	% Change
Passengers carried (000s)	340.7	356.7	4.7
Seats (000s)	410.3	442.2	7.8
Load factor %	83.0	80.6	-2.4 *
Aircraft trips	2 281	2 497	9.5

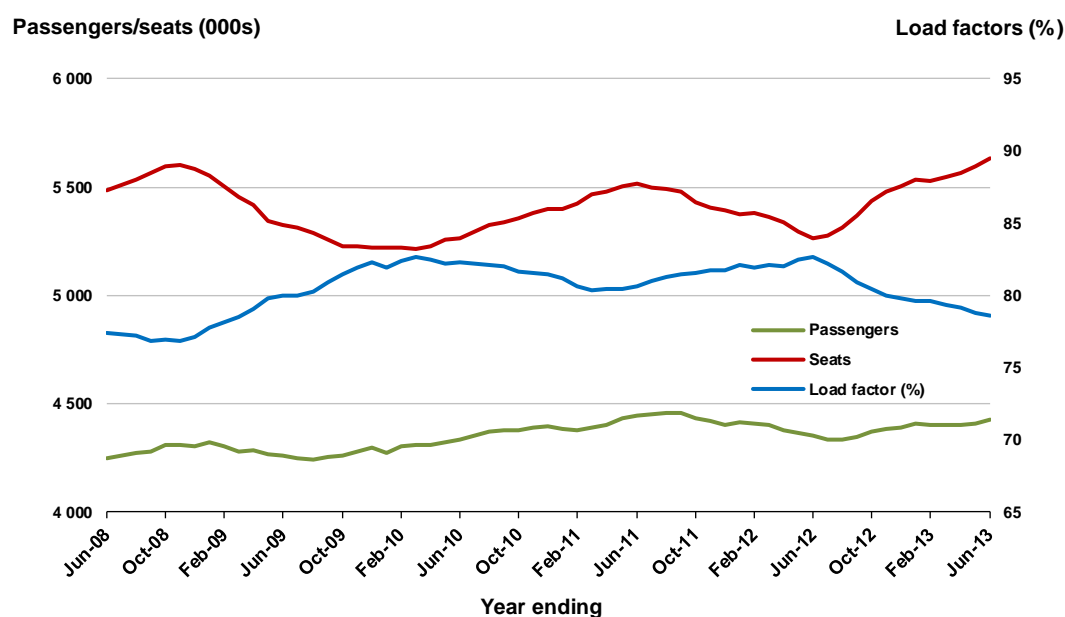
* percentage point difference



Moving annual data

	YE Jun 2012	YE Jun 2013	% Change
Passengers carried (000s)	4 352.2	4 426.2	1.7
Seats (000s)	5 265.9	5 630.7	6.9
Load factor %	82.6	78.6	-4.0 *
Aircraft trips	29 212	31 363	7.4

* percentage point difference



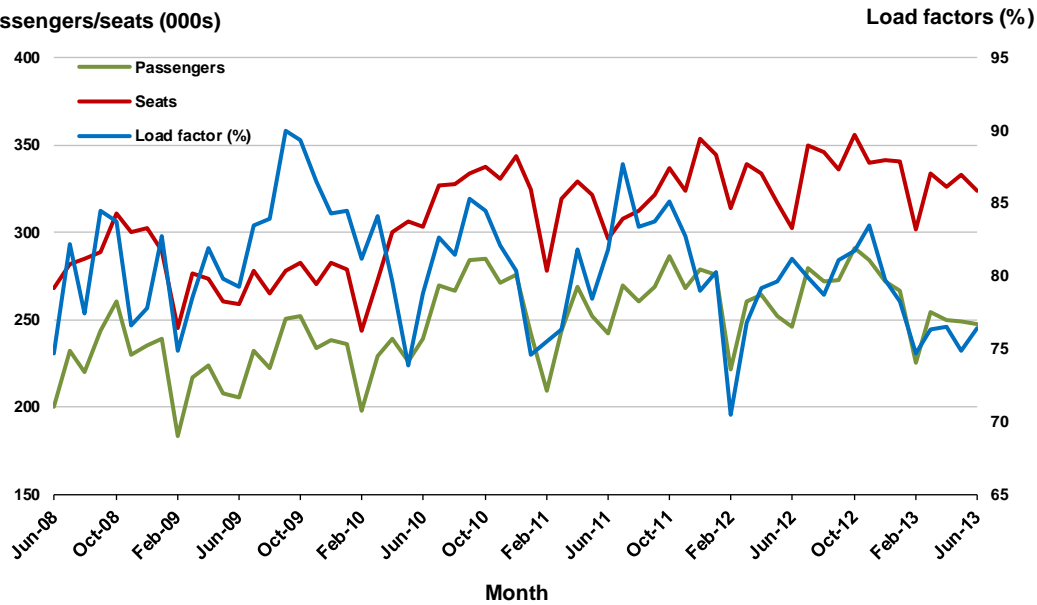
3. Brisbane - Melbourne

Monthly data

	Jun 2012	Jun 2013	% Change
Passengers carried (000s)	245.8	247.4	0.7
Seats (000s)	302.5	323.8	7.0
Load factor %	81.2	76.4	-4.8 *
Aircraft trips	1 755	1 908	8.7

* percentage point difference

Passengers/seats (000s)

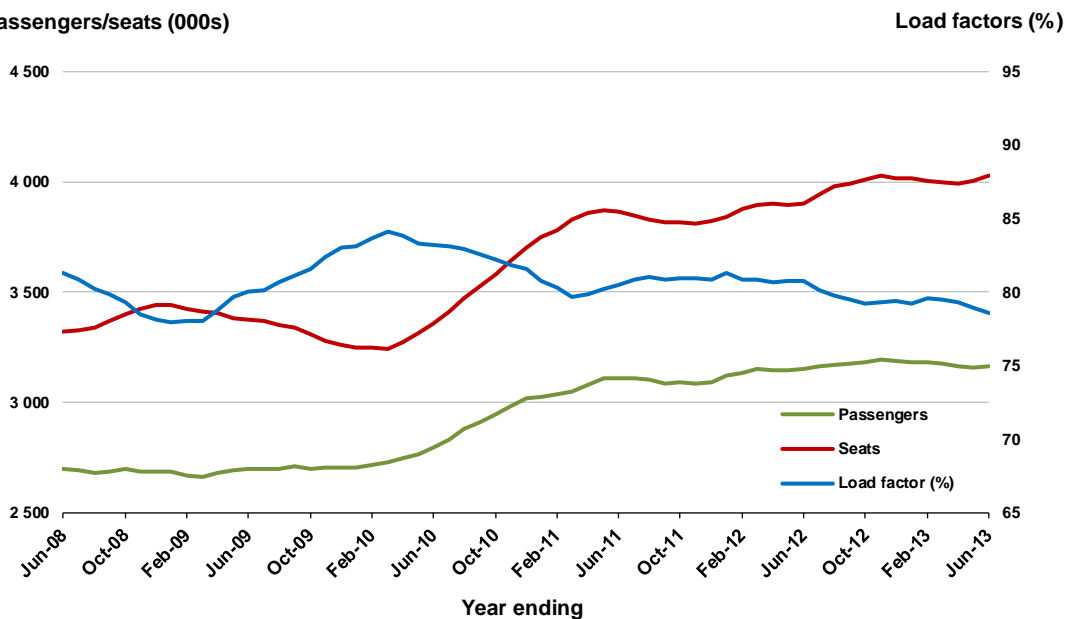


Moving annual data

	YE Jun 2012	YE Jun 2013	% Change
Passengers carried (000s)	3 152.2	3 162.5	0.3
Seats (000s)	3 904.7	4 026.5	3.1
Load factor %	80.7	78.5	-2.2 *
Aircraft trips	23 052	23 500	1.9

* percentage point difference

Passengers/seats (000s)

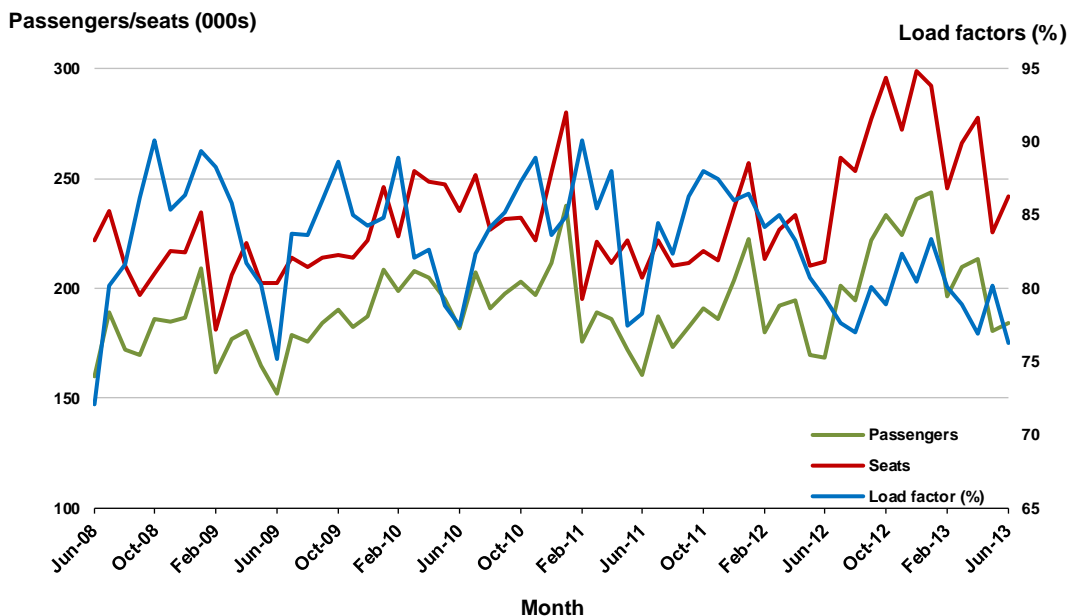


4. Gold Coast - Sydney

Monthly data

	Jun 2012	Jun 2013	% Change
Passengers carried (000s)	168.5	184.4	9.4
Seats (000s)	212.3	241.8	13.9
Load factor %	79.4	76.3	-3.1 *
Aircraft trips	1 216	1 387	14.1

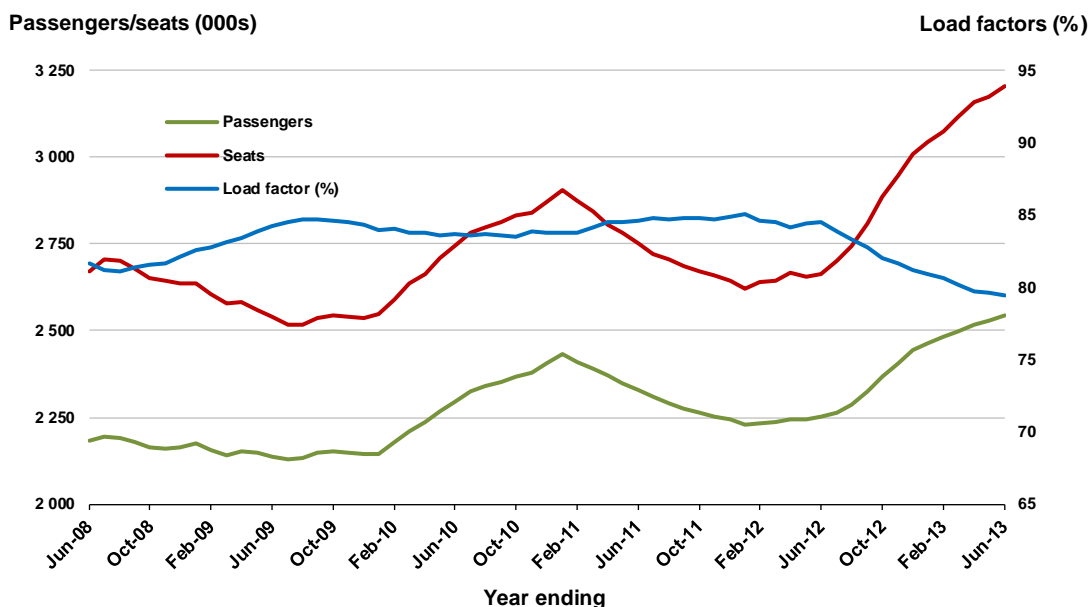
* percentage point difference



Moving annual data

	YE Jun 2012	YE Jun 2013	% Change
Passengers carried (000s)	2 250.8	2 544.7	13.1
Seats (000s)	2 663.2	3 204.2	20.3
Load factor %	84.5	79.4	-5.1 *
Aircraft trips	15 271	18 306	19.9

* percentage point difference



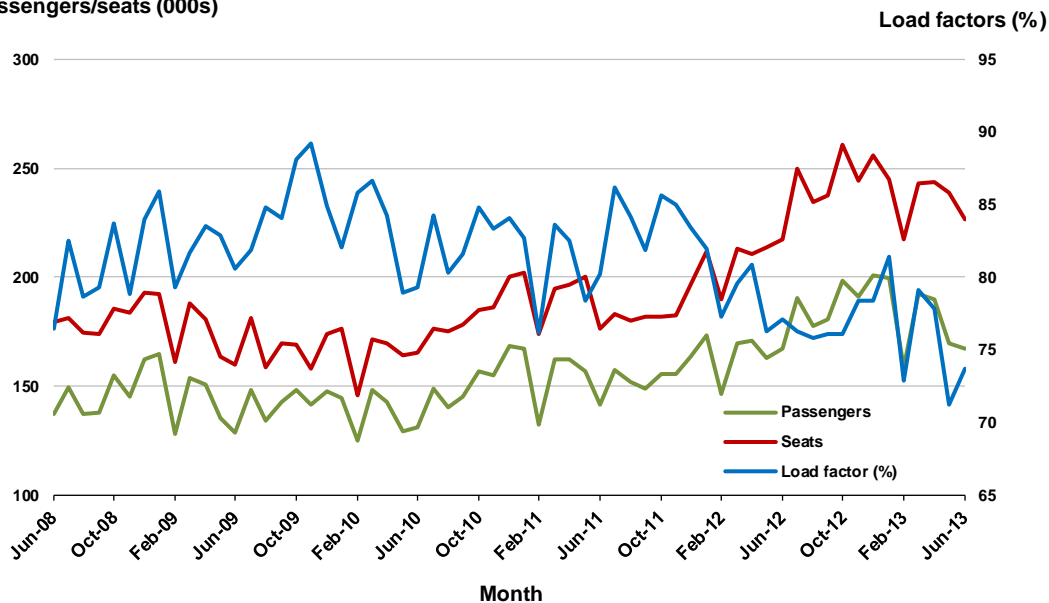
5. Melbourne - Perth

Monthly data

	Jun 2012	Jun 2013	% Change
Passengers carried (000s)	167.5	167.0	-0.3
Seats (000s)	217.3	226.8	4.3
Load factor %	77.1	73.7	-3.4 *
Aircraft trips	985	957	-2.8

* percentage point difference

Passengers/seats (000s)

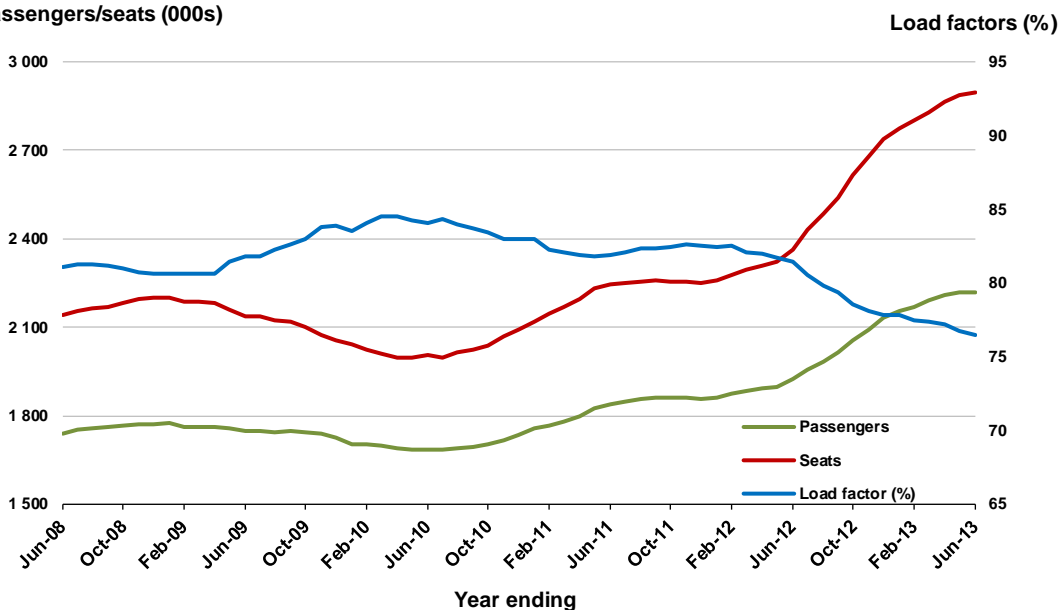


Moving annual data

	YE Jun 2012	YE Jun 2013	% Change
Passengers carried (000s)	1 924.0	2 216.5	15.2
Seats (000s)	2 362.2	2 897.6	22.7
Load factor %	81.4	76.5	-5.0 *
Aircraft trips	11 038	12 235	10.8

* percentage point difference

Passengers/seats (000s)



6. Adelaide - Melbourne

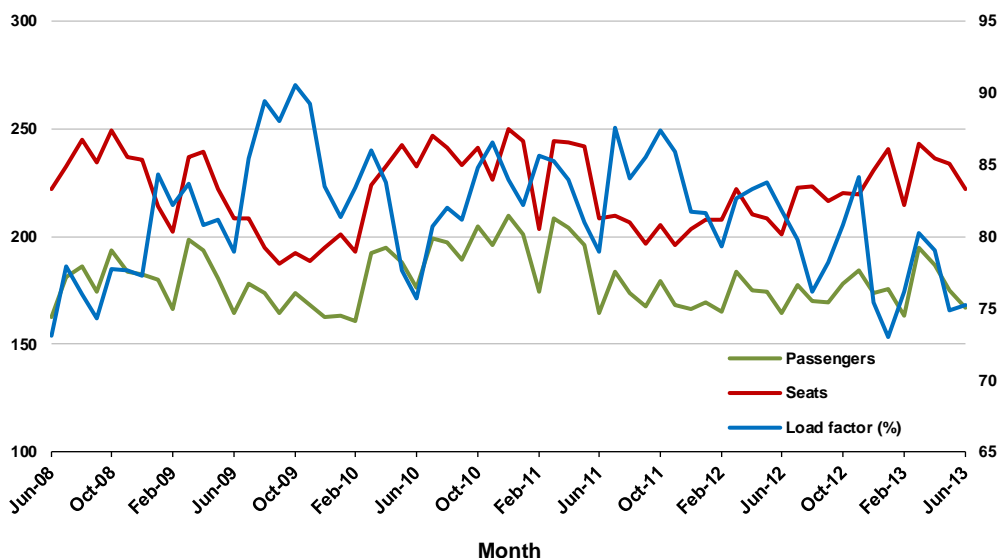
Monthly data

	Jun 2012	Jun 2013	% Change
Passengers carried (000s)	164.6	166.7	1.3
Seats (000s)	201.2	221.8	10.2
Load factor %	81.8	75.2	-6.6 *
Aircraft trips	1 265	1 346	6.4

* percentage point difference

Passengers/seats (000s)

Load factors (%)



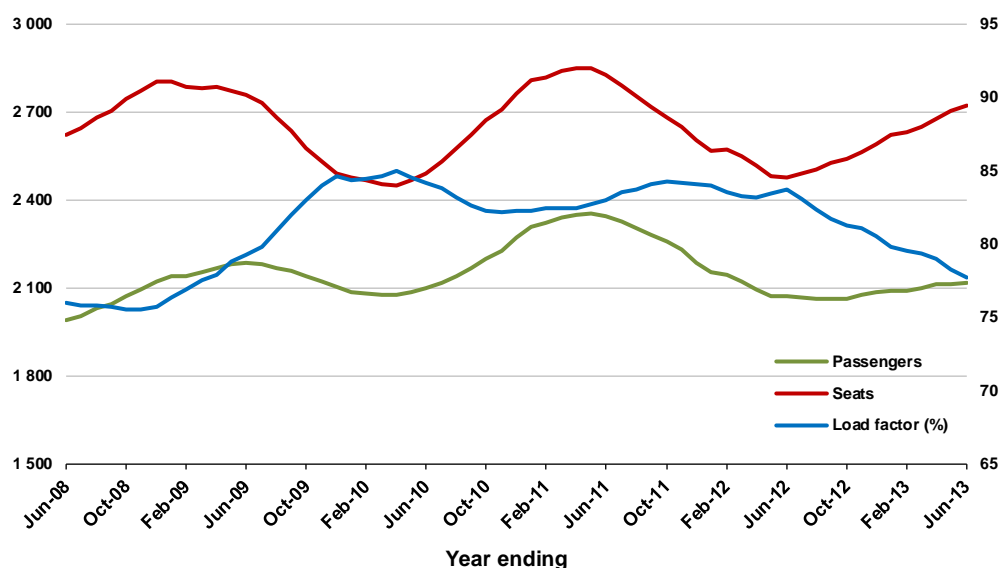
Moving annual data

	YE Jun 2012	YE Jun 2013	% Change
Passengers carried (000s)	2 071.0	2 114.8	2.1
Seats (000s)	2 474.6	2 721.1	10.0
Load factor %	83.7	77.7	-6.0 *
Aircraft trips	15 830	16 996	7.4

* percentage point difference

Passengers/seats (000s)

Load factors (%)



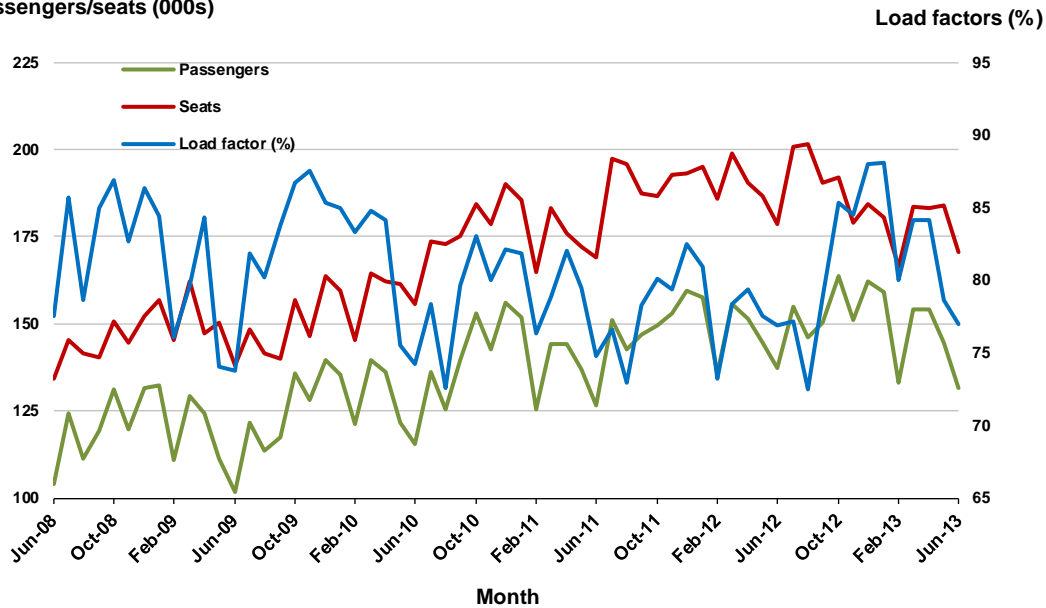
7. Perth - Sydney

Monthly data

	Jun 2012	Jun 2013	% Change
Passengers carried (000s)	137.4	131.4	-4.4
Seats (000s)	178.7	170.7	-4.5
Load factor %	76.9	77.0	0.1 *
Aircraft trips	746	687	-7.9

* percentage point difference

Passengers/seats (000s)

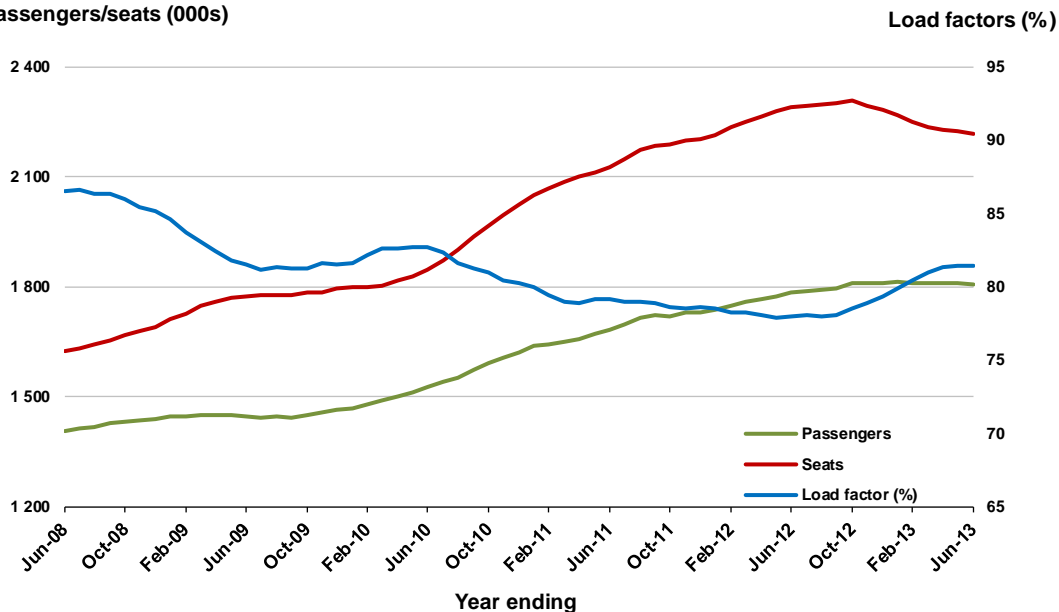


Moving annual data

	YE Jun 2012	YE Jun 2013	% Change
Passengers carried (000s)	1 785.4	1 804.8	1.1
Seats (000s)	2 288.3	2 216.0	-3.2
Load factor %	78.0	81.4	3.4 *
Aircraft trips	9 381	8 831	-5.9

* percentage point difference

Passengers/seats (000s)



8. Adelaide - Sydney

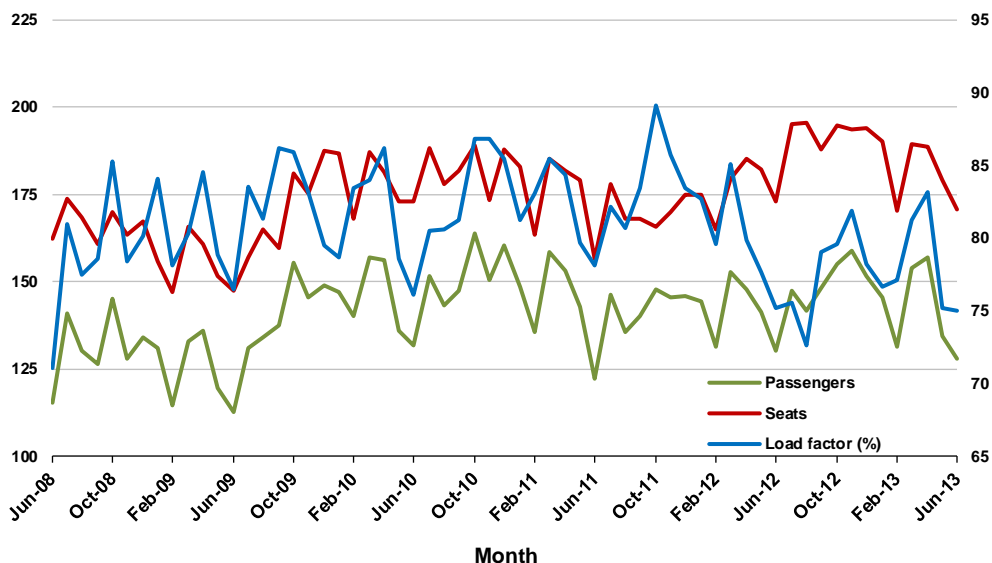
Monthly data

	Jun 2012	Jun 2013	% Change
Passengers carried (000s)	130.1	128.0	-1.6
Seats (000s)	172.9	170.6	-1.3
Load factor %	75.2	75.0	-0.2 *
Aircraft trips	996	992	-0.4

* percentage point difference

Passengers/seats (000s)

Load factors (%)



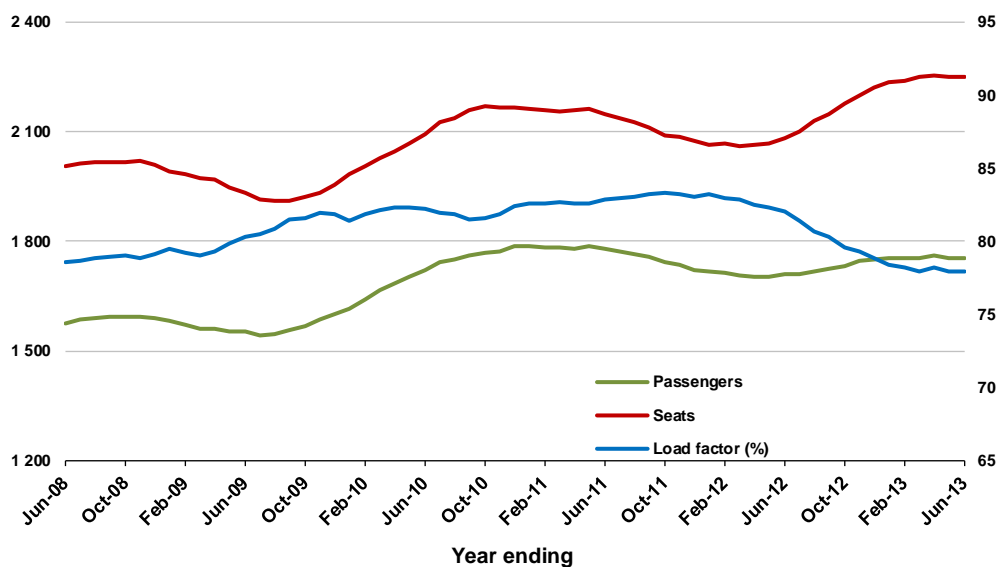
Moving annual data

	YE Jun 2012	YE Jun 2013	% Change
Passengers carried (000s)	1 709.6	1 753.6	2.6
Seats (000s)	2 084.3	2 249.0	7.9
Load factor %	82.0	78.0	-4.1 *
Aircraft trips	12 233	12 978	6.1

* percentage point difference

Passengers/seats (000s)

Load factors (%)



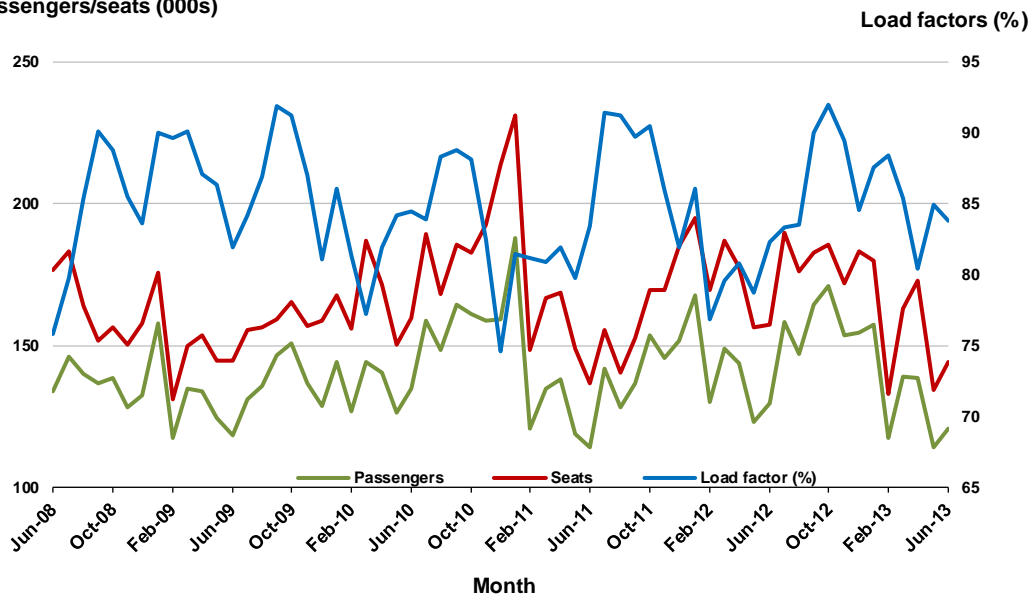
9. Gold Coast - Melbourne

Monthly data

	Jun 2012	Jun 2013	% Change
Passengers carried (000s)	129.6	120.7	-6.9
Seats (000s)	157.4	144.0	-8.5
Load factor %	82.3	83.8	1.5 *
Aircraft trips	873	783	-10.3

* percentage point difference

Passengers/seats (000s)

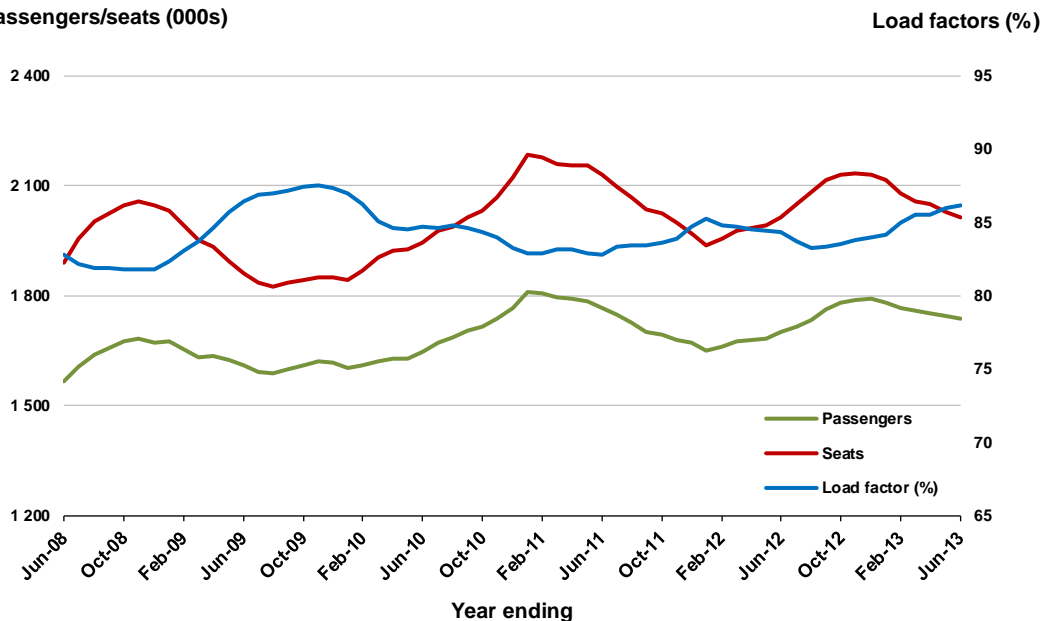


Moving annual data

	YE Jun 2012	YE Jun 2013	% Change
Passengers carried (000s)	1 699.7	1 735.9	2.1
Seats (000s)	2 014.7	2 015.6	0.0
Load factor %	84.4	86.1	1.8 *
Aircraft trips	11 200	11 115	-0.8

* percentage point difference

Passengers/seats (000s)

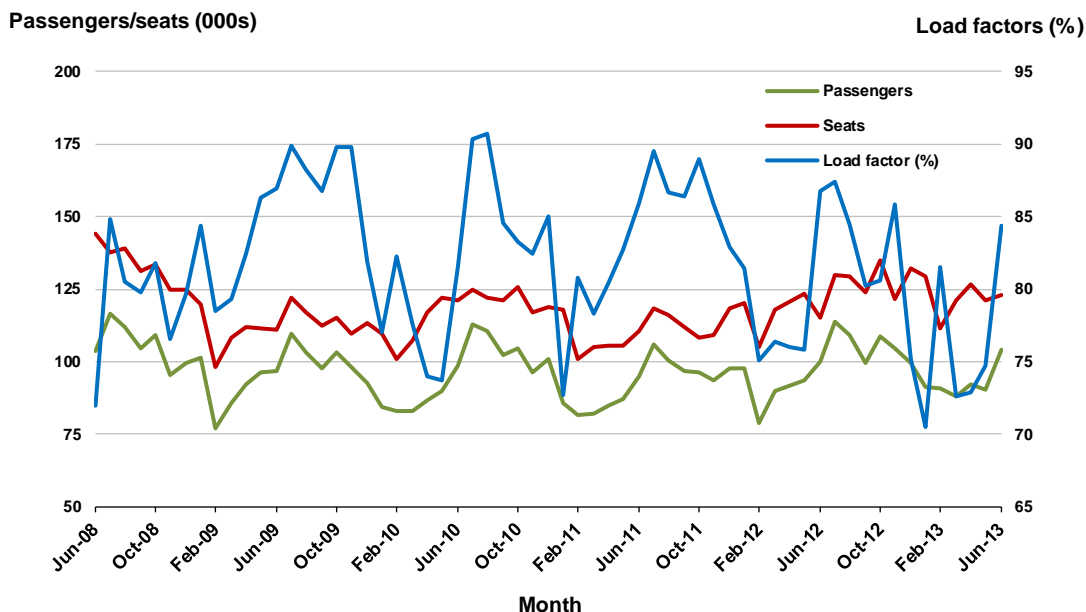


10. Brisbane - Cairns

Monthly data

	Jun 2012	Jun 2013	% Change
Passengers carried (000s)	100.1	103.9	3.9
Seats (000s)	115.3	123.1	6.8
Load factor %	86.8	84.4	-2.4 *
Aircraft trips	726	755	4.0

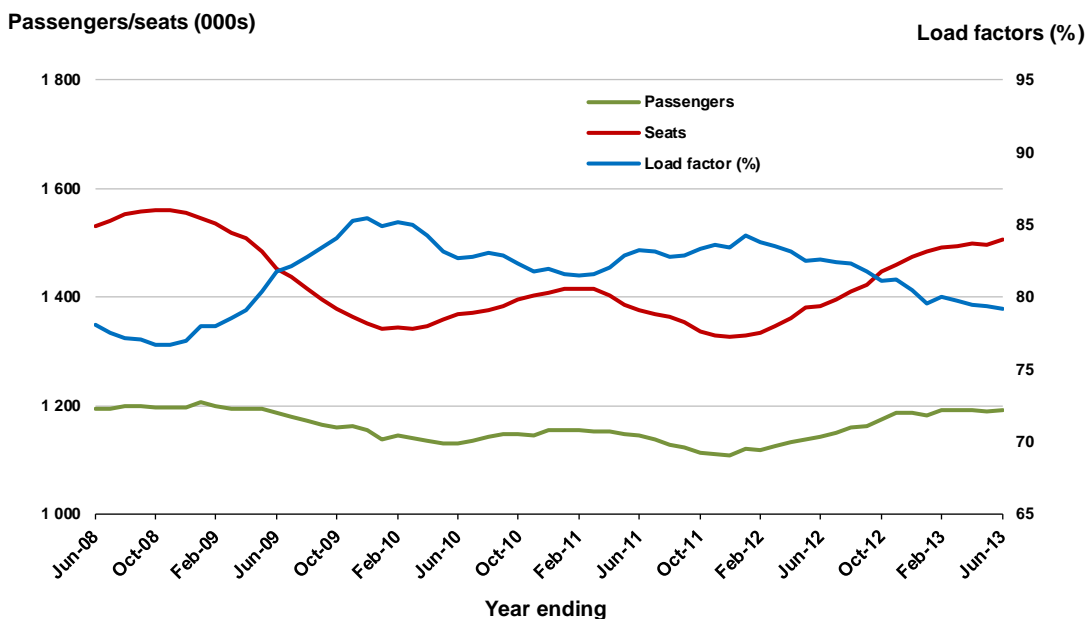
* percentage point difference



Moving annual data

	YE Jun 2012	YE Jun 2013	% Change
Passengers carried (000s)	1 143.3	1 191.9	4.2
Seats (000s)	1 384.3	1 505.1	8.7
Load factor %	82.6	79.2	-3.4 *
Aircraft trips	8 722	9 247	6.0

* percentage point difference



DOMESTIC CHARTER ACTIVITY

Table 10: Domestic charter passengers carried and aircraft trips

	YE Jun 2013	Jun-12	Jun-13	% Change
Total domestic charter passengers	2 373 200	180 962	198 355	9.6
Total domestic charter aircraft trips	58 477	4 545	4 516	-0.6

Note: data prior July 2011 not available, helicopter and leisure charter flights not included.

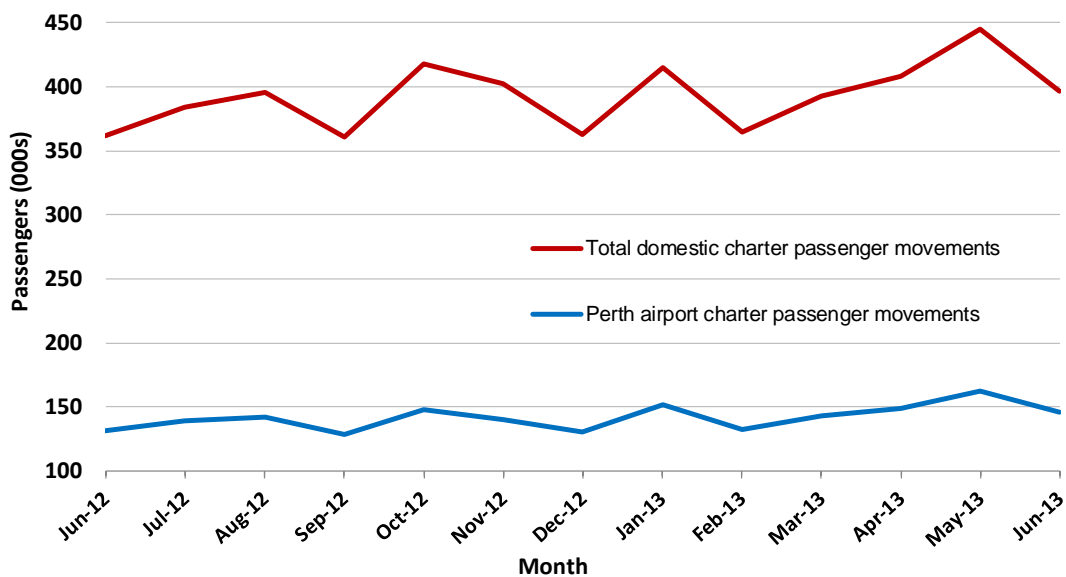
Table 11: Domestic airports - charter passengers and aircraft movements

	YE Jun 2013	Jun-12	Jun-13	% Change
Total domestic charter passenger movements	4 746 400	361 924	396 710	9.6
Total domestic charter aircraft movements	116 954	9 090	9 032	-0.6
Perth airport charter passenger movements	1 712 719	131 377	146 007	11.1
Perth airport charter aircraft movements	40 340	3 184	3 071	-3.5

Note: data prior July 2011 not available, helicopter and leisure charter flights not included.

Charter passenger and aircraft movement numbers are the sum of arrivals and departures at each airport.

Domestic airports - charter passenger movements



DEFINITIONS

Aircraft Trips	The number of flight stages. A return flight counts as two aircraft trips.
Airport Movements	Airport movements (passenger and cargo) are measured once on arrival and once on departure. Each domestic trip generates two movements at airports. For example, a trip from Melbourne to Sydney will be counted twice, as a passenger departure at Melbourne and as a passenger arrival at Sydney. At the national level, the sum of all domestic airport traffic will therefore be equal to twice the number of trips undertaken.
Available Seat Kilometres (ASKs)	Calculated by multiplying the number of seats available on each flight stage, by the distance in kilometres between the ports. The distances used are Great Circle Distances.
City-Pair	The ports shown make up the city-pair route. Passenger movements shown for a city pair reflect total traffic in both directions.
Flight Stage	The operation of an aircraft from take-off to landing.
Load Factor	The total revenue passenger kilometres performed as a percentage of the total available seat kilometres.
Passengers Carried	Revenue passengers carried.
Regular Public Transport Services (RPT)	All air service operations in which aircraft are available for the transport of members of public and are conducted in accordance with fixed schedules. It does not include charter or other non-scheduled operations.
Revenue Passengers	All passengers paying any fare. Frequent flyer redemption travellers are regarded as revenue passengers.
Revenue Passenger Kilometres (RPKs)	Calculated by multiplying the number of revenue passengers travelling on each flight stage, by the distance in kilometres between the ports. The distances used are Great Circle Distances.
Traffic on board by stages	The total of all traffic (revenue passengers) on each flight stage between two directly connected airports.
..	Data not included
NA	Not applicable