

Notes on *Cochylimorpha* Razowski, 1959 with description of one new species from Tibet (Tortricidae)

JÓZEF RAZOWSKI

Institute of Systematics and Experimental Zoology, PAS, Sawkowska 17, 31-016 Kraków, Poland;
e-mail: razowski@isez.pan.krakow.pl

Abstract. A review of the Chinese species of *Cochylimorpha* Razowski, 1959 is given. *Cochylimorpha yangtseana* sp.n. is described, notes on three more species are given, and an annotated list of 20 species known from China is provided. *C. conankinensis* (Ge, 1992), comb.n., *C. cuspidata* (Ge, 1992), comb.n., and *C. gracilens* (Ge, 1992), comb.n. are transferred to *Cochylimorpha*.

Key words. *Cochylimorpha*, China, list of species, *C. yangtseana* sp.n.

Introduction

The available data on Palaearctic *Cochylimorpha* Razowski, 1959 were summarized by Razowski (1970, 1991) and those pertaining to the Chinese fauna by Liu & Li (2002), who compiled a list of 15 species. Three species were described by Ge (1992). In the two Chinese publications the data are mentioned under *Stenodes* Guenée, 1845, which, however, is preoccupied by *Stenodes* Dujardin, 1844 (Nye & Fletcher 1991).

The present paper is based on material from the Grigore Antipa Museum Bucharest (MINGA), already examined in the sixties by the author. The species are arranged after Razowski (1991). In the following list recording the 20 species of *Cochylimorpha* known from China I give the general distribution based on my former data (Razowski 1970), and those of Liu & Li (2002). The general and Chinese distributions are mentioned from W to E and from N to S.

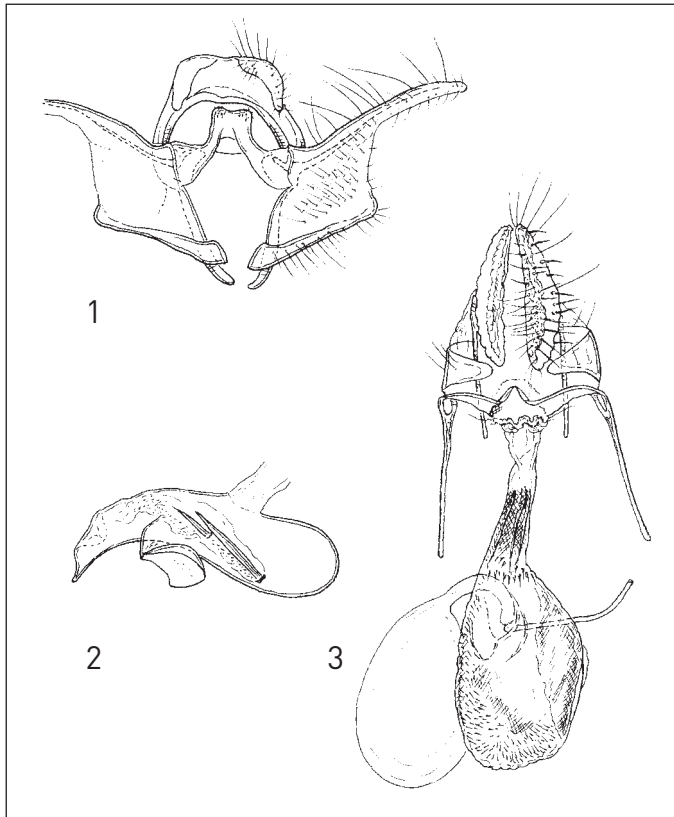
1. Taxonomy

Cochylimorpha yangtseana sp. n.

Material. Holotype: ♂, Batang (Tibet) Im Tal des Yangtse, ca. 2800 m, 7.vi.1936, H. Hoene, GS 7733, MINGA. Paratype ♀, same data as holotype, but 8.vi.1936, MINGA.

Description. Wing span 18.0 mm. Head, thorax and ground colour of forewing white; base of tegula brownish; labial palpus ca twice longer than diameter of eye, darker; markings similar to those of *C. hedemanniana*, yellow-brown, more distinctly browner at costa and dorsum; cilia pale brown. Hindwing pale brownish grey; cilia paler.

Male genitalia (Figs. 1, 2). Socii slender, broadened basally; valva broad til middle, very slender distally; sacculus rather straight ventrally with distinct caudal angle; phallus broad, somewhat bent beyond zone; vesica with two cornuti with small capituli, one twice longer than the other.



Figs. 1–3. Genitalia of *Cochylimorpha yangtseana* sp.n. **1.** Male, holotype. **2.** Male, holotype. **3.** Female, paratype.

Female genitalia (Fig. 3). Papilla analis large, broadest near middle, hairy and spiny; distal arms of sterigma slender; anterior part of ostium in a membranous collar; colliculum without sclerite; ductus bursae with slender longitudinal sclerites; rather weak sclerites and spiny areas in corpus bursae; accessory bursae and ductus seminalis in postmedian area of corpus dorsally.

Diagnosis. The male genitalia are similar to those of *C. hedemanniana* (Snellen, 1883) but easily distinguished by the very slender distal part of the valva; the female is similar to the East Asian *C. discolorana* (Kennel, 1899) but with larger areas of sclerites and numerous minute spines in the corpus bursae.

2. New records

Cochylimorpha asiana (Kennel, 1899). One specimen representing a new provincial record is from Mien-shan, Shanxi (collected on 1.viii.1937 at an altitude of ca 2000 m by H. Hoene). It is characterized by a distinctly elongate median part of the transtilla.

Cochylimorpha conankinensis (Ge, 1992: 303) (*Stenodes*) **comb.n.** This species is most probably conspecific with *C. isocornutana* (Razowski, 1970) from Likiang, North Yunnan and it was omitted from Liu & Li (2002). The drawings of the original

description and those of Liu & Li are rather superficial, thus making an exact comparison difficult.

Cochylimorpha hedemanniana (Snellen, 1883). Five specimens from A-tun-tse, North Yunnan collected at the altitude of ca 3000 m between 22.v. and 20.vi.1937 by H. Hoene. This is a new provincial record.

Cochylimorpha pallens (Kuznetsov, 1966). One specimen from Mien-shan, Shanxi, 30.vi.1937 collected by H. Hoene represents a new provincial record. This species was already recorded from Tapaishan in Tsinling, S Shaanxi. The Chinese examples were collected at the altitudes of 1700–2000 m. It was described from the Russian Far East, in the vicinity of Vladivostok. It is known also from Sutchansk in the Ussuri territory.

3. Annotated checklist of Chinese species of *Cochylimorpha*

- C. jaculana* (Snellen, 1883). East Asia from Mongolia to Ussuri territory and Primorsk, Korea, Japan; China: Manchuria, Yunnan, Heilongjiang, Jilin, Inner Mongolia, Shaanxi, Shandong, Anhui, Yunnan.
- C. asiana* (Kennel, 1899). Distributed from E Ukraine, Kazakhstan, Iran, Afghanistan to C Asia and Mongolia, known also from Libya. China: Prov. Shanxi, Beijing, Heilongjiang, Hebei, Shaanxi, Shandong, Gansu, Qinghai.
- C. cultana* (Lederer, 1855). Known from W Europe to Ural Mts, NW Africa, Turkmenia, Altai. China: Shanxi, Jilin, Shandong, Shaanxi, Quinhai.
- C. gracilens* (Ge, 1992), **comb. n.** China: Tibet (Xizang).
- C. nankinensis* (Razowski, 1964). China: Chekiang, Kiangsu; Jiangsu, Shaanxi, Zhejiang, Shaanxi.
- C. nomadana* (Erschoff, 1874). China: Xinjiang.
- C. perturbatana* (Kennel, 1900). E Ural Mts to Tian Shan, Djarkent; China: Xinjiang.
- C. pallens* (Kuznetsov, 1966). East Asia: Russia: Ussuri Territory, Primorsk; China: Shanxi, Beijing, Shaanxi.
- C. maleropa* (Meyrick, 1937). China: North Yunnan.
- C. isocornutana* (Razowski, 1964). China: North Yunnan.
- C. conankinensis* (Ge, 1992), **comb.n.** China: Sichuan.
- C. hedemanniana* (Snellen, 1883). East Asia: Minussinsk to Primorsk; China: Kiangsu, Shanxi, Yunnan, Beijing, Heilongjiang, Shanxi, Shaanxi, Jiangsu, Anhui, Yunnan.
- C. nipponana* (Razowski, 1977). Japan: Shikoku; China: Heilongjiang, Shaanxi.
- C. yangsteana* Razowski, **sp. n.** China: Tibet.
- C. amabilis* (Meyrick, 1931). China: Kwanhsien.
- C. cuspidata* (Ge, 1992), **comb. n.** China: Beijing, Shaanxi.
- C. alticolana* (Razowski, 1964). China: Tibet.
- C. lungtangensis* (Razowski, 1964). China: Kiangsu, Jiangsu, Zhejiang, Shaanxi.
- C. fuscimacula* (Falkovitsh, 1963). SE Europe, Kazakhstan, Turkmenia; China: Shaanxi.
- C. emiliana* (Kennel, 1919). Central Asia from Schawyr to Mongolia; China: Heilongjiang.

Acknowledgements

The author thanks the authorities of the Grigore Antipa Museum, Bucharest, especially the late Dr A. Popescu-Gorj who lent me the material for study and Dr Wu Chunseng, Beijing for his kind translation of the Chinese data on the distribution of *Cochylimorpha* from the book by Liu and Li (2002). I also thank Dr B. Landry for linguistic corrections.

References

- Ge, X. 1992. Study on the Chinese *Stenodes* Guenée (Lepidoptera: Cochylidae) with description of new species. – *Sinozoologia* **9**: 299–306.
- Liu, Y. & G. Li 2002. Tortricidae – *In*: Fauna Sinica, Insecta vol. 27, Lepidoptera. – Science Press, Beijing. 463 pp., pls. i–cxxxvi, + 2 colour pls.
- Nye, I. W. B. & D. S. Fletcher 1991. The generic names of moths of the world, vol. **6**: Microlepidoptera. – British Museum (Natural History), London. Pp. i–xxx, 1–368.
- Razowski, J. 1970. Cochylidae. – *In*: Amsel, H. G., Gregor, F., Reisser, H. (eds), Microlepidoptera Palaeartica **3**. Fromme, Wien. iv + 528 pp., 161 pls.
- Razowski, J. 1991. The catalogue of the species of Tortricidae (Lepidoptera). Part I: Palaeartic Chlidanotinae and Tortricinae: Cochylini, Tortricini, Ceracini, Cnephasiini. – *Acta Zoologica Cracoviensia* **34** (1): 99–162.