



Faith Lutheran College Redlands

1982 - 2007

25 Years of Faith



Faith in Christ... prepared for life

This book celebrates 25 Years of Faith.

Faith began with a wonderful group of people on the Redlands Lutheran Primary School Development Committee under the guidance of Ben Guse (Chairman). This group with determination, a lot of hard work and God's blessing started the Redlands Lutheran Primary School (later renamed Faith Lutheran Primary School) in 1982.

The first section of this book takes you through the set up and early years of the school.

The second section tells of our journey to become a Prep Year to Year 12 College under the guidance of Gavin Buhse (College Council Chairman since 1992) and Anthony Mueller (Principal since 2002).

The third section contains the Principals' Reports from 2001 - 2006.

The final section Faith Achieves is a separate booklet. Faith Achieves is a quarterly publication charting some of the achievements of the College. It commenced publication in 2004.

Our sincere thanks to Garry Hauser, Heidi Kirsch, Ben Guse, Robert Marriott and Gavin Buhse for your entertaining and informative memories.

Compiled, edited and published by
Jennifer Crawford
Personal Assistant to the Principal - 30 July 2007.



Faith Lutheran College, Redlands
Faith in Christ ... prepared for life.
25 Years of Education in the Redlands

Faith

The journey

begins.....

ORIGINS OF THE FAITH SCHOOL LAND at LINK ROAD **by Garry Hauser**

In 1954, the Hauser family moved to the Redlands area having purchased 38 acres of land at Link Road Victoria Point for the purpose of growing vegetables.

In 1975, Wally Hauser, the head of the family, decided he wanted to convert the farm into a sports centre and built six squash courts, a gym, a playground area, a roller skating rink, and a basketball stadium.

In the early 80s, Wally got excited with the idea of giving up part of his land to allow the Lutheran Church to build a primary school. And so began what was known as Faith Lutheran Primary School to serve the Christian families in the area.

The parcel of land on which the school was built had been a pumpkin patch and a cricket oval where touch football was also played. There were two dams on the site also and they were kept as a nature park by the school in its early years until it was important to develop playing fields for students.

Wally and the Hauser family take great delight in seeing the school expand to what it is today.

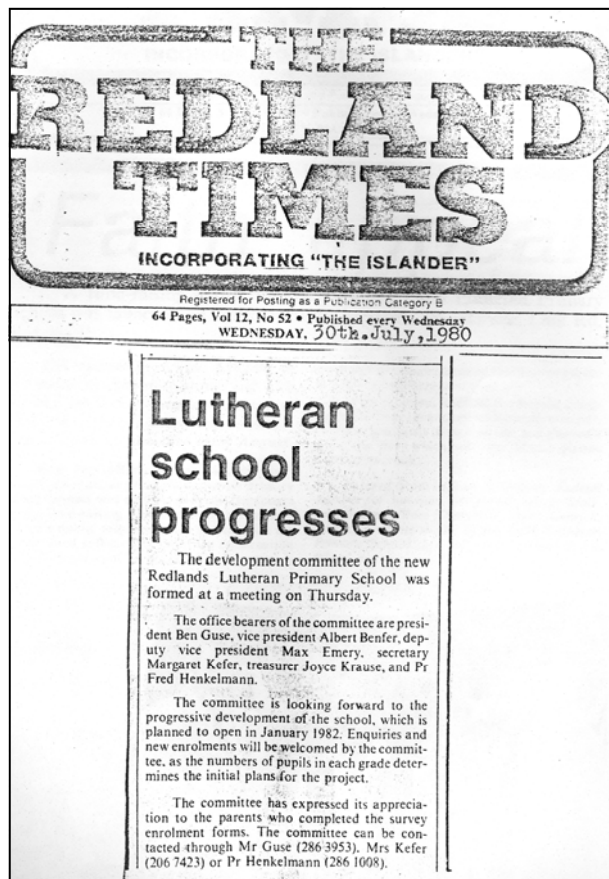


Garry Hauser presenting the Hauser Cup

Redlands Lutheran Primary School
Development Committee

Chairman	Ben Guse
1st Vice Chairman	Albert Benfer
2nd Vice Chairman	Max Emery
Secretary	Margaret Kefer
Treasurer	Joyce Krause
Ex-Officio	Pastor Karl Kirsch

Committee Harold Bleyer, Kate Emery, Dick Fawke, Merv Genrich, Pastor OM Gregory, Gary Hauser, Wally Hauser, Esther Heidenreich, Don Krause, John Marsson, Ken Provis, Judy Richmond, Ian Roennfeldt, Sue Siebrecht, Maureen Vela, James Weeks, Noreen Weeks and Heidi Kirsch



1981

Patrons - Queensland Premier - Mr Joh Bjelke Petersen (later Sir Joh Bjelke Peterson)
State Member for Redlands - Mr John Goleby
Federal Member for Bowman - Mr David Jull
Cr Merv. Genrich
Cr Albert Benfer
Mr Wally Hauser
Redland Times' Managing Director - Mr John Fowler
Retired farmer - Mr Adolf Benfer

The Setting of the Foundation and Cornerstone of Faith
November 1, 1981 at 4:00pm
Pastor Karl Kirsch

1982

First Principal	Robert Marriott
Teachers	Heidi Kirsch and Merril Klose
Administration	Noreen Roennfeldt

Stage 1 Dedication and Opening of Redlands Lutheran Primary School
Sunday, 24 January 1982 at 2:30pm
Pastor DG Stolz (LCAOD Secretary and former Pastor of Redlands Parish)
Opened by Member for Bowman Mr David Jull

Name was changed to Faith Lutheran Primary School to reflect the school's close proximity to Faith Lutheran Church at Redland Bay.

Greetings from Ben and Lola Guse on this special occasion of the twenty fifth anniversary of Faith Lutheran Primary College, Redlands.

We give thanks to God for his provision of all things that led to the dedication and opening in 1982.

As the establishment committee prayed and planned during 1981 we were blessed with the assurance in so many ways that it was God's will for the school to be commenced, as in all endeavours "unless the Lord builds the house, they labour in vain who build it" (Ps 127). Lola and I recall most vividly how god sowed the first seed. We were at the Kindergarten/Childcare Centre at St. James in Cleveland one afternoon when a mother came for her child and said to us "you provide such loving Christian care here, it would be great if these children could continue the same way into a primary school".

God speaks in some wonderful ways as in 1Chronicles 28:20, "be strong and of good courage, and do it; do not fear nor be dismayed for the Lord God will be with you".

God has been faithful to his promise and has provided the people over the past 25 years to move forward through Primary into Secondary level, Principals; Teachers; Staff; Committees and parents. God bless you all.

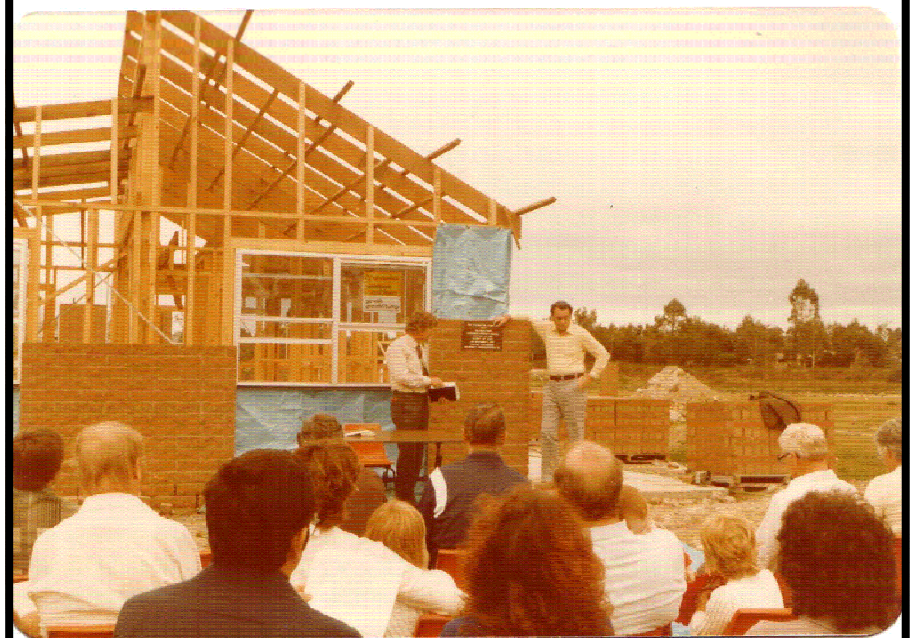
We give thanks for you all and mention you in our prayers (1Thes 1:2)

UNITED IN CHIRST --- SERVING --- TEACHING ---GROWING.

We wish you Gods Blessing for the future.

In Jesus Name

Ben and Lola Guse (now at Immanuel Retirement Village at Buderim)



Heidi Kirsch remembers

My husband Rev Karl H Kirsch and I were called to the Redlands Parish comprising the congregations of St James, Cleveland, St Paul's, Mt Cotton and Faith Redland Bay in the end of 1980. Rev Kirsch began his ministry in February 1981 and ended it in January 1989. During this time the development of Faith Primary School played a large part in his ministry. When we came to the Redlands the School Development Committee was well established and had laid the ground work for the establishment of a new Lutheran Primary School in the parish. The chairman of the Development Committee was Ben Guse. After the school was opened on January 24 1982 the Development Committee became the management committee of the school under the chairmanship of Albert Benfer and later Ray Pace (now Pastor Ray Pace).

During 1981, before the school opened, I handled most of the enquiries regarding the school and noted the enrolment details. After the opening I taught Grade One in 1982, Grade Two from 1983 to 1986, and Grade Three in the first three terms of 1988. I was also responsible for the school library and was deputy head during most of those years. In 1987 I was school librarian on a part-time basis, while I completed my Graduate Diploma in School Librarianship. I had completed my Bachelor of Arts in 1983. My personal involvement with the school as teacher and school librarian and with the three congregations as wife of the local pastor is the foundation for the following comments:

The school was established as a project of the three congregations. Through the school contacts new members joined the congregations in Cleveland, Redland Bay and Mount Cotton. The head teacher of the school worshipped in Redland Bay, the teachers worshipped in one of the three congregations, wherever they liked, new members attracted through the school joined one of the congregations. On Monday mornings the Pastor conducted a morning devotion at the school, there were also opening and closing services in the beginning and the end of the school year. Otherwise all worship services were conducted in the three churches. During the time of Pastor Kirsch's ministry the school was responsible for the education of children; the congregations under his leadership were responsible for the core activities of the church: worship and service to those in need.

How times have changed! Now worship services are conducted at 'Faith College' and the two remaining congregations of the former Redlands Lutheran Parish are encouraged to become one large congregation situated at the school.

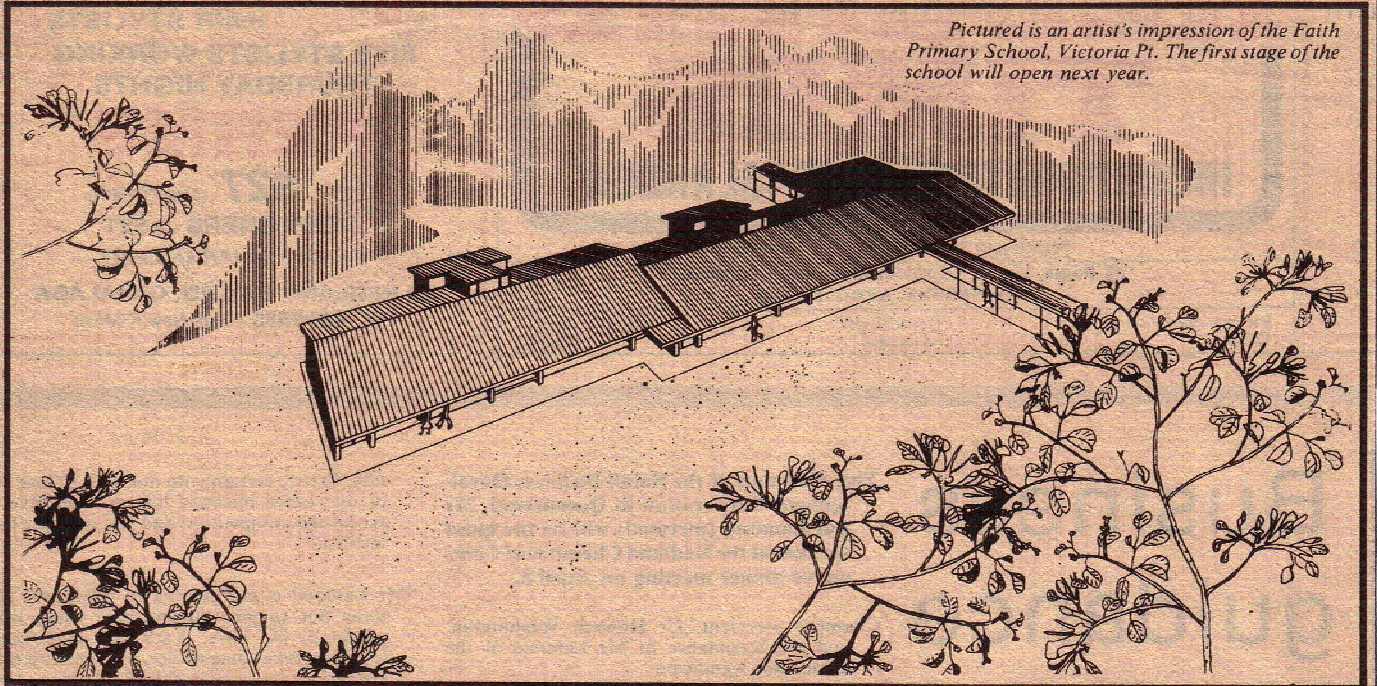


Heidi Kirsch, Rob Marriott (Principal) and Merrill Klose

REDLAND TIMES 1ST APRIL 1981

Faith in primary schooling

Pictured is an artist's impression of the Faith Primary School, Victoria Pt. The first stage of the school will open next year.



Plans are well underway for the siting of Redlands' Lutheran primary school, to be called Faith Primary School, at Link Rd, Victoria Point.

Stage one of the project consists of four classrooms and an administration block, and the school's establishment committee estimates the school will open with up to 90 pupils next year.

Faith Primary School's establishment committee has 24 people actively engaged in planning both the physical and curricula shape of the school, and the committee includes seven teachers and two Redland Shire councillors. According to committee chairman, Mr Ben Guse, more than 60 children have enrolled in the school already, covering grades one, two, three, and four.

"We envisage that it will be a full school of

200 pupils after its third year." Mr Guse said. "The first stage will cost \$200,000 and it is estimated that the total cost of the school will be about \$600,000 by the time it is completed".

Mr Guse said tenders would be called for stage one of the school by the middle of the year, and the committee also intended to get a public fundraising appeal underway very soon. To launch the appeal, the committee has planned a family barbecue afternoon for May 9 on the school site, near the Family Sports Centre.

At the barbecue, committee members will answer questions about the school, and a brochure on the school will also be distributed, as well as enrolment forms. The school brochure will be distributed to local service organisations and churches prior to the barbecue.

Architects of the Faith Primary School, John Marsson and Company, Cleveland, have designed a very functional and practical school building format. Mr Marsson said much use had been made of natural light, through skylighting and the rooms had been designed for maximum cross ventilation.

"Climatic control has very much been taken into account in the design," Mr Marsson said. "A covered play area has been included in stage one, as are combined wet areas. The classrooms feature carpeted floors, and sound levels between classrooms have also been taken very much into account".

A spokesman for the school's establishment committee said the school would be open to all denominations, and would eventually cater for years one to seven. The group feels that Christian schools only exist because Christian parents want their children to receive an education based on the value expressed in the Christian Faith.

The Faith Primary School aims to provide Christian training of a child related to, and coupled with, secular and academic instruction of the highest standard. Faith Primary School will develop curricula as set out by the Education Department and then establish instructional policy and gather Christian staff to fulfill its aims.

The establishment committee listed, among the aims of the school, that the object was not to relieve parents of their responsibility toward the nurture and training of their child. Hence, parental interest, support, and encouragement was of paramount importance. Such support should not only be expressed in monetary support, but in actively practising at home what parents expected the child to learn at school.



Faith second generation students in 2007. Anton Fink Year 5 (mum Anna Fink nee Fawke - grandparents Jan Fawke (Staff since 1985) and Dick Fawke) and Jaimie Howell Year 4 (mum Sheridan Howell nee Veltheim) Not shown Quinn Howell Year 1 and Sakara Hauser in Prep (daughter of Jason and Tressa Hauser, granddaughter of Garry and Karen Hauser and great-granddaughter of Wally Hauser).

REMINISCING ON FAITH EARLY DAYS

(by Garry Hauser)

The following is my recollection of the early days of Faith Lutheran Primary School.



SPORT

When the school was first opened, there were virtually no sports facilities provided at the school. Furthermore the early staff of Faith, were also lacking expertise in this area. However, the Family Sports Centre adjacent to the school had all the necessary facilities to suit the needs of the students.

The first Principal, Bob Marriott, did a deal with the Family Sports Centre management (owned by the Hauser family). For \$1.00 per child, they were taught the basic skills of squash, basketball, volleyball, gymnastics, roller skating, compact tennis and cricket. Each class would attend a thirty or forty minute session each week. A class would be taught a sport for one term and then move on to another sport the next term.

I personally remember teaching the kids squash and cricket. This gave me and my family an opportunity to know the names of every student at Faith. There were some 137 students there at the time.

The First Premiership

Bob Marriott approached me to coach the boys in Soccer for the Friday afternoon comp. I agreed but was very despondent after the first training session as they were quite "ratty".

Mr. Marriott told me not to give up on the boys but to give them another chance. He told me in his words, "The whole school has been like that this week".

So I persisted and those boys developed into a fine team going through undefeated. There were no Finals in those days for schoolboy sport, but I told them anyway that as far as I was concerned, they won the premiership.

P & F

The parents in the early days were a keen bunch of people. It seemed they couldn't do enough for the school. Some jobs that needed to be done couldn't be funded by the school. There was no groundsman at first but that didn't stop people like Sue Russell hopping in and doing the gardening and mowing. Sue spent most of her time at the school on a voluntary basis. She tells me they planted some 120 trees provided free by the Redland Shire Council. Working bees were well attended and held often. Ian Baguley, a builder, built a Wishing Well BBQ and this was used for years at social functions at the School. Unfortunately it has been displaced owing to the expansion of the school.

Soon a P & F was formed for fundraising and bringing parents together in fellowship.

I had the pleasure of being appointed the first president. Other people on those first committees were the Charles's, Russell's, Magee's, Addicott's, Veltheim's, Ballintyne's and Curran's.

FUNFEST

The P & F was encouraged to organize a fete for fundraising. So we got organized and had one. I think \$1000 was raised that first year. The second year, we were strongly advised to come up with a special name for the Faith Fete and run it separately from P & F.

I remember we spent a whole evening at a meeting to decide on a name for that fete. John Murray, a PR officer for the Redlands Shire Council, was asked to attend, and he led us through the discussions until we settled on one name – FUNFEST. We all agreed it had to have the idea of fun in it and “fest” was a German word for feast. So we all thought that was fitting.

John Murray emphasized to us that if we get the name right, it will just about sell itself to the public. How prophetic that turned out to be!

Sue Russell was appointed the first Convener of FUNFEST and did so for a number of years with great success.

CONCERTS

Music has always played a big role in the make up of the school. In the first year, sport may not have had a huge influence with the teachers, but music did. And so to finish the first school year a concert was planned where each class from Year one up had to perform. To make it special, one big musical play was to be attempted as a highlight for the evening. Dale Hauser, a parent and also a music teacher, but not at the school, offered to direct the musical called “Kids Praise”.

This was staged at the Family Sports Centre’s Basketball Stadium on Saturday night, 28/11/82. What a resounding success it was! It was a packed house. It was also a great witness.

In this production the entire student body of ‘FAITH’ participated on stage.

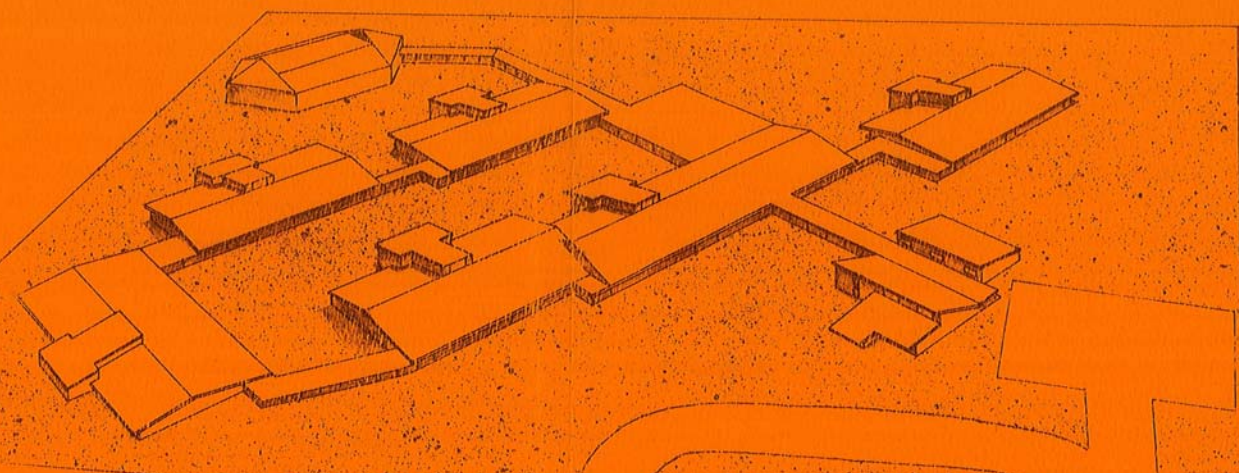
The next year, another such concert and another musical was attempted. This time Dale directed the musical called ‘Psalty’s Christmas and again the entire school participated, with resounding success.

These are my recollections of the early days of “Faith”.

The early students are in their early 30’s now. It’s good to see them around especially at Funfest each year. I hope the school has been an influence in their lives and they can recount happy times. As for the EARLY PARENTS, many of them maintain close contact with each other and have lasting friendships. I personally get a thrill out of catching up with many of the students and parents from the early days.

GOD BLESS FAITH COLLEGE AND ALL THOSE WHO PASS THROUGH IT.





Redland's Lutheran Primary School



plans are advancing

Plans are advancing to open a Lutheran Primary School in the Redlands' District to be known as Faith Primary School. Since June 1980 a development committee of interested people from the Lutheran Church and churches of other denominations within the community have studied the desirability and feasibility of such a venture and we are happy to share this progress report with you.

An initial survey showed 39 pupils for enrolment in year 1-4 in 1982 with a further 10 pupils for year 5-7, and progressively more in the coming years.

This encouraged the development committee to go ahead. Options for a site for the proposed Lutheran Primary School were considered and one at Link Road, Victoria Point (near Hausers' Family Sports' Centre) was decided upon. Negotiations with the Schools' Commission and the Church (LCA, QD) are proceeding favourably, and grants and supports are assured. Architects' plans and submissions are well advanced.

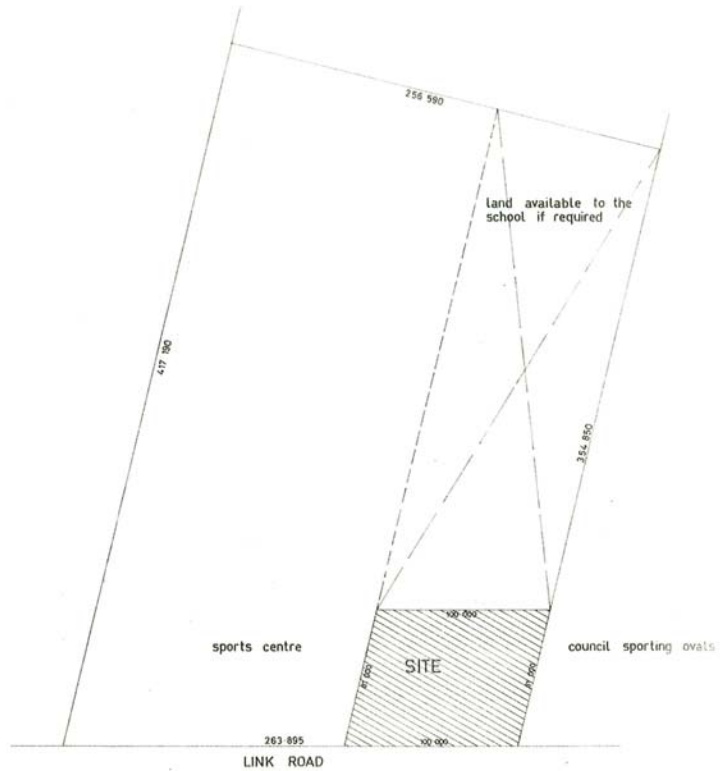
The Faith Primary School will be a co-educational primary school open to all denominations, eventually catering for year 1-7. It is to be built and developed in stages, and we expect Stage 1 for year 1-4 to be ready for the new school year 1982.



master plan



locality plan



block plan

REVISED NO.	DETAILS	DATE	BY	THIS DRAWING IS COPYRIGHT
1	initial			
2	school commission			
3	to client			

JOHN MARSSON & CO.
 ARCHITECT
 SUITE 3 REDLAND TIMES BUILDING
 125 QUEEN STREET
 CLEVELAND 4183
 TELEPHONE 285217

REDLAND'S LUTHERAN
 PRIMARY SCHOOL
 LINK ROAD
 VICTORIA POINT



DATE: 81-2-G
 SHEET: 1 OF 4
 DRAWN: J.M.
 SCALE: A

Aims of the School

Christian schools exist because Christian parents want their children to receive an education based on values expressed in the Christian faith. Indeed parents must be acknowledged as the first and foremost educators of their children, and the private Christian school is an expression of this obligation that parents recognize.

The Lutheran School sees itself as a ministry of the Church, working with parents in carrying out their responsibility towards their child.

Therefore, Faith Primary School aims to provide sound Christian training of a child, related to and coupled with secular instruction of the highest standard. A world view which has its roots in God's revelation, the Holy Scriptures, wherein man came adrift from his God, is found and saved by him in Jesus Christ, is to pervade all teaching. To this end, the school endeavours to provide the pupil with opportunity for and help in developing:

- a knowledge and understanding of the christian way of life, his commitment to it, and his application to it in contemporary life;
- an acquisition of knowledge and the constructive use of it;
- fundamental intellectual skills of understanding, discerning, criticism and decision;

- a high level of mastery of communication skills of listening, reading, writing, and speaking;
- an awareness of personal talents and the proper use of them for self and the human community;
- physical well being and mental health;
- healthy and satisfying interpersonal relationships;
- an awareness for, and understanding of, our culture and Australian society, and his place within it;

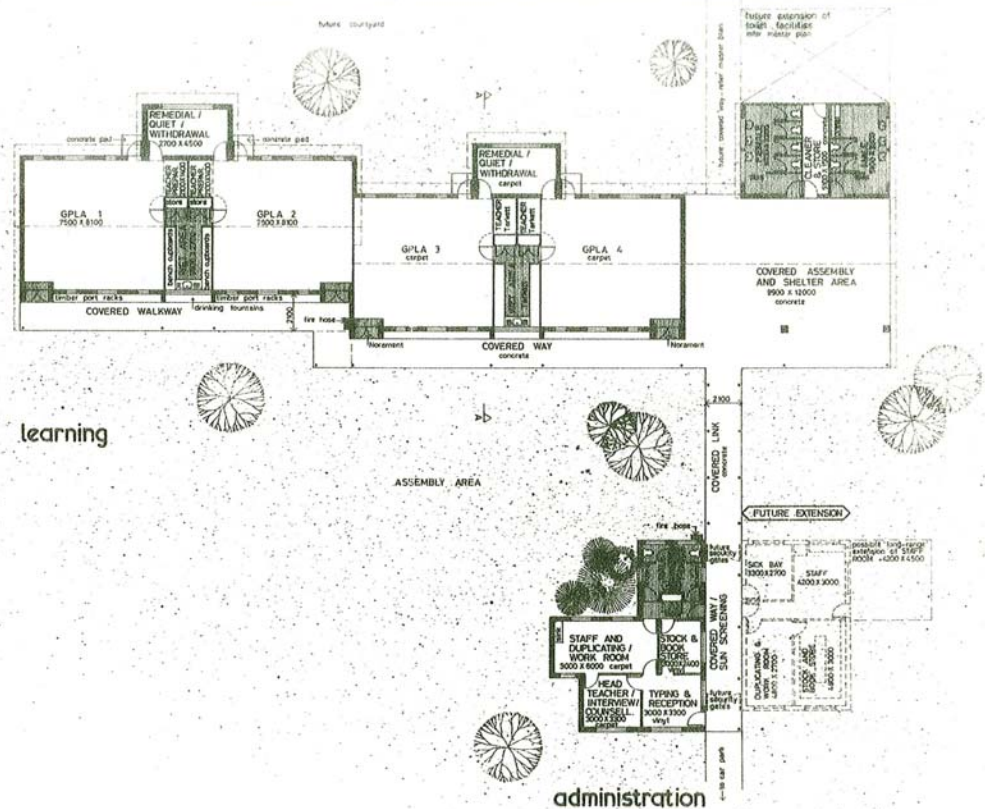
The school develops curricula as set out by the Department of Education of QLD, establishes instructional policy and gathers a Christian staff to fulfil these aims.

The school is to be staffed by Christian teachers, complying with the requirements of the Queensland Board of Teacher Registration. Within the context of the school teachers will:

- agree to work within the framework of a set of Christian values, and respect the values of fellow teachers, parents and school;
- exercise Christian discipline;
- ideally be committed to the Christian faith, and contribute to and promote an attitude of worship within the school;
- have professional competence and see education as a life long process, within which they avail themselves of the many opportunities for professional growth;

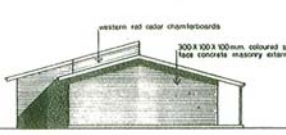
o at all times give a good example to pupils and participate in the schools' pastoral care programme.

The School does not want to relieve the parents of their responsibility toward the nurture and training of their child. Therefore parental interest, support and encouragement is of paramount importance. This should not only be expressed in monetary support, but in active practising at home what parents expect the child to learn at school.



learning
administration
floor plans (stage 1)

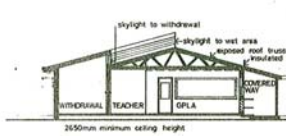
<table border="1"> <tr><th>drawing no.</th><th>date</th><th>description</th><th>by</th><th>checked</th></tr> <tr><td>1</td><td>10/11/81</td><td>details</td><td>DA</td><td>DA</td></tr> <tr><td>2</td><td>11/11/81</td><td>structural commission</td><td>DA</td><td>DA</td></tr> <tr><td>3</td><td>15/11/81</td><td>client</td><td>DA</td><td>DA</td></tr> </table>	drawing no.	date	description	by	checked	1	10/11/81	details	DA	DA	2	11/11/81	structural commission	DA	DA	3	15/11/81	client	DA	DA	THIS DRAWING IS COPYRIGHT	JOHN MARSSON & CO. ARCHITECT SUITE 2, 135 QUEEN STREET, REDLAND TIMES BUILDING, CLEVELAND 4163 TELEPHONE 246 5077	REDLAND'S LUTHERAN PRIMARY SCHOOL LINK ROAD, VICTORIA POINT	north point 	REFERENCE 81-2-E DESIGN DEVELOPMENT sheet 2 of 4 drawn DA & JM	issue A
drawing no.	date	description	by	checked																						
1	10/11/81	details	DA	DA																						
2	11/11/81	structural commission	DA	DA																						
3	15/11/81	client	DA	DA																						



east elevation



north elevation

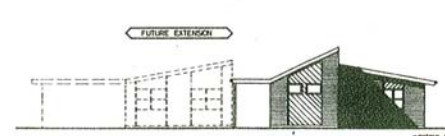


section A-A

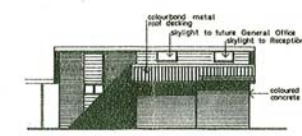


south elevation

learning (stage 1)



south elevation



east elevation



north elevation

administration

<table border="1"> <tr><th>drawing no.</th><th>date</th><th>description</th><th>by</th><th>checked</th></tr> <tr><td>1</td><td>10/11/81</td><td>details</td><td>DA</td><td>DA</td></tr> <tr><td>2</td><td>11/11/81</td><td>structural commission</td><td>DA</td><td>DA</td></tr> <tr><td>3</td><td>15/11/81</td><td>client</td><td>DA</td><td>DA</td></tr> </table>	drawing no.	date	description	by	checked	1	10/11/81	details	DA	DA	2	11/11/81	structural commission	DA	DA	3	15/11/81	client	DA	DA	THIS DRAWING IS COPYRIGHT	JOHN MARSSON & CO. ARCHITECT SUITE 2, 135 QUEEN STREET REDLAND TIMES BUILDING CLEVELAND 4163 TELEPHONE 246 5077	REDLAND'S LUTHERAN PRIMARY SCHOOL LINK ROAD VICTORIA POINT	north point 	REFERENCE 81-2-F design development sheet 3 of 4 drawn DA & JM	issue A
drawing no.	date	description	by	checked																						
1	10/11/81	details	DA	DA																						
2	11/11/81	structural commission	DA	DA																						
3	15/11/81	client	DA	DA																						

Finance

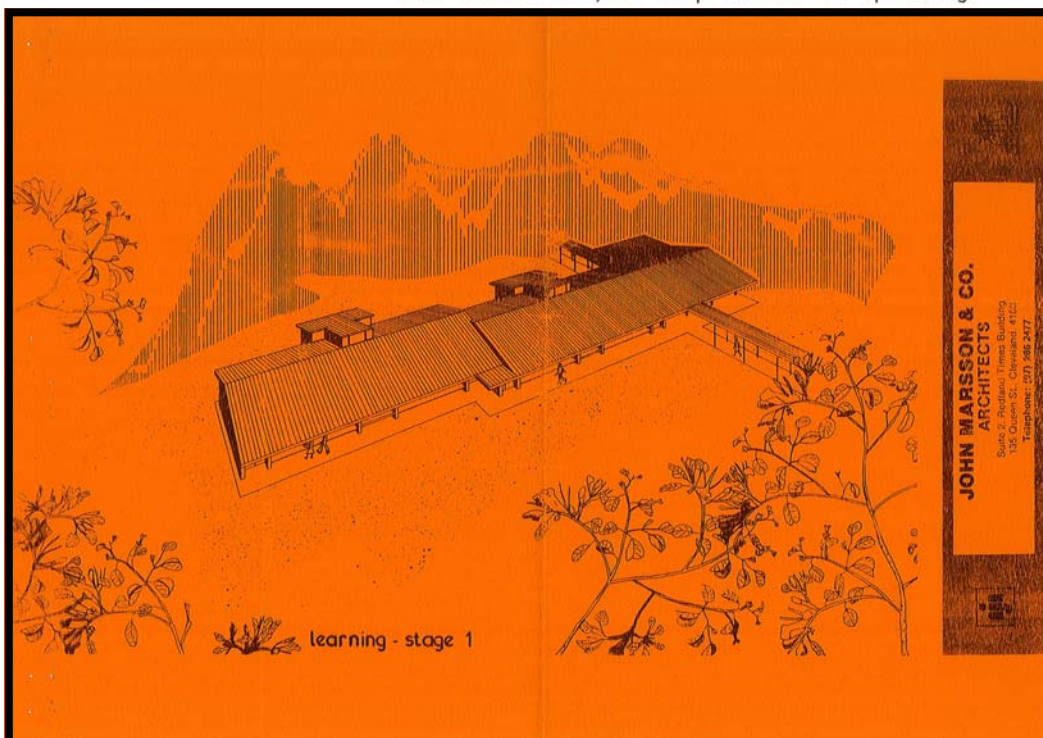
The building and development of a school needs money

How shall Faith Primary School be financed ?

1. A submission has gone to the SCHOOLS' COMMISSION applying for a grant from the Federal Government. This will be in the vicinity of (\$ 100000)
2. The Development Committee will be engaged in various fund raising activities, eg. stalls, special projects, dinners, etc.....
3. A fund raising drive will be made in the community. Monetary donations will be tax deductible.
4. The Lutheran Laymen's League (LLL) is a "banking" institution through which favourable loans can be negotiated. However, to do this supporters of the school will need to deposit "matching deposits" in LLL (at about Savings Bank interest) and earmark these, so that the school development committee can loan against these

If we can get a substantial banking of earmarked deposits, we can get low interest loans.

5. Further loans may have to be negotiated with banks and private individuals.
6. The Lutheran congregation of the Redlands' Parish will consider direct congregational support of the school.
7. Support by individual members has been assured.
8. The Auxiliaries of the Lutheran congregations will also raise funds for the school.
9. A Queensland Government per capita grant for each pupil enrolled, together with school fees, will keep the school operating.





REDLAND'S LUTHERAN PRIMARY SCHOOL

ENQUIRIES- Pastor KIRSCH286 1008
Margaret KEFER (Secretary)..206 7423
Joyce KRAUSE (Treasurer)....206 6209
Maureen VELA (Uniforms).....207 2692
Ben GUSE (Chairman).....286 3953

The Manager,
NATIONAL BANK
CLEVELAND.

RE: Application for Loan - To construct stage 1
of an Independant/Christian Primary School.
Location - Link Rd., Victoria Point.
Date Loan required - 1st.October,1981.
AMOUNT: \$99 000.

Dear Sir,

Attached hereto is some documentation as requested, regarding an application for a loan for the first stage of the School. Also a Budget Estimate which we have compiled since we called Tenders. We found the construction costs to be higher than estimated.

The Budget covers a period of 14 years (1982/1995) and shows that we can proceed with the project, subject to finance at a reasonable Interest rate.

Our Redlands Parish has conducted a Child-care/ Kindergarten/Pre-school Centre at Cleveland for the past 10 years and we have had a pleasant banking association with your Bank. Because of the reasonably high annual budget for that Centre, an operating surplus in excess of \$20,000 is usually carried in a Cheque Account with your Bank. The same will apply to the account in respect of the Primary School. We have already opened two accounts with your Bank, for the School, one General and one for the Building Fund appeal. We pray that we may be blessed with a continued association with your Bank.

As we have mentioned above, because of the higher building costs, it seems that we can proceed with the overall Project subject only to loans at reasonable interest rates. We have prepared the attached Budget in the hope that we may receive your favourable consideration on a loan at about 12 $\frac{1}{2}$ %.

The original estimate for the overall project was about \$600,000 but has now been budgeted at \$1,020,000. Because of the good response to our Fund-raising appeal, we envisaged building a house for the Principal along with the first Stage, but we now see that this will have to wait at least until the end of 1983.

We will be able to provide sufficient Loan guarantors as required by you. The Land is still in the process of transfer, and a copy of the Deeds will be available in due course.

It is shown in the attached budget that the estimated cost of the first stage is \$320 000. We have through negotiation, been able to reduce it to that figure. The Tender was for \$303 000, plus Council charges, Professional costs and furnishings amounting to about \$60 000. This has been negotiated without any detrimental effect on the design or structure of buildings.

Paid enrollments for 1982 are already close to 50, which is the figure mentioned in the budget for 1982.

Yours faithfully. In the service of our Lord.

Letter from Commonwealth Government advising the School would receive a grant for Stage 1



MINISTER FOR EDUCATION

PARLIAMENT HOUSE
CANBERRA A.C.T.

Dear Mr. Guse,

I have pleasure in informing you that I have approved the offer of a grant to Redlands District Lutheran School, Victoria Point for the following purpose:

Construction of stage 1 of a new primary school to comprise four general purpose learning areas with two withdrawal areas, administration and staff/resource areas, toilets and storerooms, with verandah, covered area and covered link, and site development works.

The offer of \$160,000 or 63% of the total cost of the approved project, whichever is the lesser, is made under the Commonwealth Government's program of assistance to schools throughout Australia as contained in the States Grants (Schools Assistance) Act 1980. Of this amount \$60,000 has been authorised for payment in 1981, \$50,000 will be authorised for payment in 1982 and \$50,000 for payment in 1983 following the passage of appropriate legislation. The grant will be administered by the Schools Commission.

The amount of the grant offer has been recommended by the Schools Commission after careful consideration of the advice given to it by your State Planning and Finance Committee. It represents the full extent of the Commonwealth's commitment to the project. Accordingly no payment in excess of the amount offered will be made towards this particular project.

I draw your attention to the conditions applying to the grant (copy attached). The conditions which will apply to grants to be paid in subsequent years will be similar to those that are attached but may be extended by additional conditions imposed by legislation giving effect to Schools Commission programs in those years. Would you please advise the Commission's State Executive Officer in writing within fourteen days of your acceptance (or otherwise) of the grant offer and the conditions related to it. An acceptance advice is enclosed for your convenience.

I trust that this assistance offered by the Commonwealth Government will assist materially in the provision of improved facilities and will be of real value to the educational program of your school. Please contact the Commission if there are points on which you require further advice or assistance.

Yours sincerely,

A handwritten signature in cursive script, appearing to read 'Mary', written in dark ink.

WAL. FIRE

Mr. B.V. Guse,
Chairman,
Redlands District Lutheran School
Planning Committee,
31 Drevesen Avenue,
CLEVELAND. QLD. 4163.

Tender price for Stage 1 too high - School will need to raise or borrow \$95,000.
This amount was raised by an appeal to the community.



REDLAND'S LUTHERAN PRIMARY SCHOOL

ENQUIRIES- Pastor KIRSCH286 1008
Margaret KEEFER (Secretary)..206 7423
Joyce KRAUSE (Treasurer)....206 6209
Maureen VELA (Uniforms).....207 2692
Ben GUSE (Chairman).....286 3953

31 DREVESEN AVENUE
CLEVELAND, 4163. Q.

Mr. G. RUTHERFORD
EXECUTIVE OFFICER
SCHOOLS COMMISSION.

Dear Sir,

With reference to the Grant of \$160 000 for the building of the first stage of the Redlands Lutheran Primary School, we wish to submit some details of our present financial situation.

As you are aware, we were somewhat shocked by the high Tenders for the Project.

The estimate of \$254,522 upon which your funding of 63% was based (\$160 000), required us to raise or borrow about \$95 000.

Our Budget estimate indicated that this would be about the limit of our borrowing capacity. However we proceeded with a fund-raising appeal, hoping for the possibility that we may be able to use some of our borrowing capacity to purchase a Principal's residence. In fact, during the fund-raising appeal, it was indicated to people, that if the Appeal was reasonably successful, we would need to borrow less for the School and subsequently allow us to borrow for a residence.

We were pleasantly blessed with fund-raising to about the figure of \$95 000. However this is over a four-year pledge, but would provide (year one and two) about \$50 000 towards this first stage. This would have allowed us to reduce bank borrowings for the School to about \$45 000 and borrow \$50 000 for a Principal's residence.

However after opening Tenders to find the lowest at \$303 000, we had to prune some non-essential items. But even then, when adding back on the professional costs and furniture etc, the total came back to \$307 000.

This meant that we needed all our Bank borrowing capacity for the School. It also had to be decided to postpone the purchase of a Principal's residence.

We then set about to look for a suitable home for rental. However after a month of searching by all Members of our Committee, to date there is just nothing whatsoever available for rental.

Therefore we come to you humbly again, in the possible hope that if any further funding is available, could you please consider our circumstances which have arisen.

So then if by chance, you were able to assist with any additional funding for the School, we could utilize some of our Parish borrowings for the Principal's residence, as previously intended.

Once again we thank you greatly for your past assistance.

Request of Support from the Community to raise \$95,000



REDLAND'S LUTHERAN PRIMARY SCHOOL

ENQUIRIES: Ben Guse 286-3953
Margaret Kefer 206-7423
Pastor Kirsch 286-1008

Dear Community Friend of the Redlands,

The Redlands Lutheran Parish plans to establish an Independent/Private/Christian Primary School to commence in January 1982. It will be open to all Christian Denominations and will be located at Link Road, Victoria Point, adjacent to a Sporting Complex.

We believe there is no better future investment than in the sound total education (ACADEMIC-SPIRITUAL-PHYSICAL) of today's children.

We also know that community-minded people, from time to time, do wish to support a worthwhile project which will benefit the community as such. We therefore inform you of our plans and look to the possibility that you might generously support this venture.

The completed School, after four years, will have cost approximately \$600,000. Government support, through the Schools Commission, has already been pledged to the extent of approximately \$300,000. We of the Redlands Lutheran Parish, therefore, need to raise \$300,000 through a fund-raising appeal, or by loans.

The attached sheet shows how 'Gifts in Perpetuity' can also be made; also the current rates of Tax Deductibility on these and all other gifts to the Building Fund.

GIFTS TO THE BUILDING FUND ARE TAX DEDUCTIBLE.

However, more importantly than any such earthly gain, we can look with confidence to such verses from Scripture as: Matthew 6, 19-20 - 'Do not save riches for yourselves here on earth, instead store up for yourselves, riches in Heaven, where moths and rust cannot destroy and robbers cannot break in and steal'; and 'What shall it profit a man if he gains the whole world, but loses his own life' (eternal life).

We would like to leave this thought with you: 'not he who has much is rich, but he who gives much'.

Yours sincerely,

A handwritten signature in cursive script, appearing to read "Ben Guse".

Ben Guse
CHAIRMAN.

GIFTS IN PERPETUITY

The building of a major facility in our Community such as the new REDLANDS LUTHERAN PRIMARY SCHOOL affords a rare opportunity to perpetuate the name of a family, a friend, a business organisation or firm, by means of a generous gift.

As others who have gone before have been honoured, so our coming generations will honour those whose names are emblazoned as sponsors of these proposed buildings which will form part of the total School complex.

Our gifts to these School buildings will outlive all of us, and our children and their children, and will be our living memorial whilst ever the School educates the young men and women of our rapidly developing area.

Various such opportunities are described here. We would be pleased to discuss these, or others, with you. Gifts are sought, are fully tax deductible, and payments may be spread over four tax years.

One Classroom Block	\$100,000
Administration Area	\$ 50,000
Library	\$ 40,000
Classroom No. 1	\$ 30,000
Classroom No. 2	\$ 30,000
Classroom No. 3	\$ 30,000

A GIFT READY RECKONER AT CURRENT TAXATION RATES

Your Gross Income	Your Total 4-year Gift	Annual Payment by you	Tax saving for you Annually	Nett Annual Cost to you
<hr/>				
Less than	\$ 200	\$ 50	\$ 16	\$ 34
\$17,239 p.a.	\$ 500	\$125	\$ 40	\$ 85
@ 32 cents in the \$	\$1,000	\$250	\$ 80	\$170
<hr/>				
\$17,239 to	\$ 500	\$125	\$ 57	\$ 68
\$34,478 p.a.	\$1,000	\$250	\$115	\$135
@ 46 cents in the \$	\$2,000	\$500	\$230	\$270
	\$4,000	\$1,000	\$460	\$540
<hr/>				
Greater	\$2,000	\$500	\$300	\$200
than	\$4,000	\$1,000	\$600	\$400
\$34,478	\$8,000	\$2,000	\$1,200	\$800
@ 60 cents in the \$	\$20,000	\$5,000	\$3,000	\$2,000
<hr/>				

Redlands Shire Council discuss possible cost savings relating to drainage and car park provisions.



REDLAND'S LUTHERAN PRIMARY SCHOOL

ENQUIRIES- Pastor KIRSCH286 1008
Margaret KEFER (Secretary)..206 7423
Joyce KRAUSE (Treasurer)....206 6209
Maureen VELA (Uniforms).....207 2692
Ben GUSE (Chairman).....286 3953

Mr. WOODS (CHAIRMAN)
REDLANDS SHIRE COUNCIL

We thank you for the appointment to meet with your Council at 3.00pm, tomorrow 18th, to discuss possible cost saving factors related to drainage and car park provisions at Link Rd, Victoria Pt.

Our development was programmed for the Contractor to move onto site at the end of next week. However, on receipt of Tenders we found the lowest tender of \$303,000 to be about \$90,000 above our budgeted estimate for this first stage. This cast some doubt on the Project as a whole. We have drawn up a new long term budget which shows that we can proceed, subject to the possible pruning of costs for this first stage. Later stages should not present so great a problem, because of the inflow of fees and Government subsidies once the School commences to function.

The attached list shows suggested amendments which will regrettably lower the standard of the building and facilities, but would at least allow us to proceed with this stage which has become the main problem, with respect to our present available funds.

The items underlined on the attached list are those which we would like to discuss with you, with the view to possible postponement until the second stage in 1983.

Item 1. The first stage of the school will employ only two teachers one of whom will be living nearby. A maximum of one teacher's car would be parked at the school, and parents who convey their children to the school would not need to park. In fact the turning circle is wide enough to allow for the parking of about three vehicles. No large buses would use the turn-around in the early stages of the school.


Item 2. Roofwater drainage. This amount of \$10,889 is to take the roof water from the stage 1 buildings to the roadway. If we were required to expend that rather large amount, it would mean severe cutting of other building costs and result in a rather second-rate first stage of the school.

With regard to ground-surface storm-water flowing across the site from the direction of the Sports Centre, this has been largely eliminated by the filling-in of the large dam at the rear of the site. The majority of the water from around the Sports Centre now flows to the rear of the School site. Any storm water flowing across the site would be completely eliminated by the provision of a shallow spoon-drain on the boundary of the School site with the Centre. Could the roof-water be turned into another such drain near the school, at least for this first stage?

We consider that the site is a much dryer area since the filling-in of the dam; so much so that we plan to reduce the site fill significantly.

Any assistance your Council can offer that will allow our first Stage to proceed, would be greatly appreciated.

Yours faithfully,


B.V. GUSE
CHAIRMAN

REDLANDS LUTHERAN PRIMARY (FAITH) - 1982 Budget (based on 50 pupils)

	<u>EXPENDITURE</u>	
<u>SALARIES & ALLOWANCES:</u>		
PRINCIPAL - Basic Salary	- 9,980	
Medical	- 636	
Car	- 1,331	
Library	- 163	
Hospitality	- 369	
Travelling	- 100	
Child (2)	- 410	
	12,989	
OTHER TEACHERS - (1 female)		
Basic Salary	- 8,696	
Medical	636	
Car	1,331	
Library	163	
	10,826	
OTHER WAGES (part-time)		
Secretary	- 2,000	
Cleaner	- 2,000	
Janitor	- 1,000	
	5,000	
<u>TEACHING EXPENSES(MATERIAL):</u>		
Stationary/Library/Aids/ Text Books/Kits/Arts/ Crafts/Sports equipment/ etc.	8,000	8,000
<u>GENERAL NON-WAGE ITEMS:</u>		
L.C.A.Levies-50 @ \$14 --	700	
Provident Fund --	500	1,200
<u>COUNCIL CHARGES</u>		
Sewerage and Cleansing	1340	1,340
<u>MISCELLANEOUS</u>		
Telephone installation, rent & calls -(School & Home)	1000	
Electricity,Insurance on Building,Worker's Insurance,Public Risk		
Insurance, Postage ---	2000	3,000
CLEANER & JANITOR'S MATERIAL	1000	1,000
<u>SCHOOL BUS</u>		
Depreciation & Running Exp.	2000	2,000
<u>CAPITAL REPAYMENTS</u>		
L.L.L (Land Loan-\$24,000)	2400	2,400
Nat.Bank(1st.Stage\$95,000)		
Interest @ 13½%	12584	
Loan Establishment fee	250	
Loan Service fee	280	
Capital repayment	4750	17,864
Capital and interest repayment on Principal's house loan.	18000	18,000
TOTAL.....		\$ 83,619

	<u>INCOME</u>
<u>RECURRENT FUNDS</u>	
Term Fees- \$400 X 50-20,000	
Com.Grant-\$562 X 50	28,100
Establishment Com. Grant-148 X 50	7,400
State Grant-261 x 50	13,050
State Loan Subsidy	12,584
Enrollment fees \$10 x 50	500
P.F.A Contribution	1,500
TOTAL	\$ 83,134
1982 Budget Deficit..	\$ 485

SCHOOL DEVELOPMENT FUNDS:

Cost of Stage 1. -	
Contract....	248,462
Professional fees..	20,337
Local Authority..	30,000
Furniture/equipment.	9,100
TOTAL.....	\$307,899
Plus Tests, Studies, Consultant fees, Etc.	6,743
TOTAL.....	\$314,642
Means of funding Stage 1 -	
Government Grant ..	160,000
1981 pledges.....	17,080
1981 donations.....	25,232
1982 pledges.....	17,330
Nat.Bank loan.....	95,000
TOTAL.....	\$314,642

1982	<u>FEE STRUCTURE</u>	<u>PER FAMILY P.A</u>
One Child attending--		\$400
Two " "		-- \$760
Three " "		--\$1120
Estimated annual increase-10%		

COST OF COMPLETE SCHOOL
FOR 200 Pupils IN 1986
ESTIMATE --- \$1,020,000

Principal and Teacher's Wages in 1982



REDLAND'S LUTHERAN PRIMARY SCHOOL

ENQUIRIES-	Pastor KIRSCH	286	1008
	Margaret KEFER (Secretary) ..	206	7423
	Joyce KRAUSE (Treasurer)	206	6209
	Maureen VELA (Uniforms)	207	2692
	Ben GUSE (Chairman)	286	3953

SALARY & ALLOWANCE STRUCTURE - 1982

January - June

Basic Salary -- Principal- 10,811
" " - Other Teachers(f) 9,730

July - December

Basic Salary --Principal- 11,352
" " -Other Teachers(f) 10,317

Allowances -- Principal (January-December)

Medical----- 589
Car-----1456
Library----- 168
Hospitality----- 377
Travelling 7.2c.km 100 est.
Child (2) 460 3,150

Allowances -- Other Teachers(f) (January-December)

Medical----- 295
Car----- 778
Library----- 101 1,174

PROVIDE ACCOMODATION OR ALLOWANCE - Married = 1430
Single = 715

THE SCHOOL WILL PAY THE LEVIES AS DETERMINED BY THE
L.C.A. BOARD OF PENSIONS TO PROVIDE -

Long Service Leave
Sickness and Accident
Pensions.

The following Letter of Call is printed with permission from Mr Robert Marriott



REDLANDS LUTHERAN PARISH
27 WATERLOO STREET
CLEVELAND, QLD. 4163
PHONE: (07) 286 1008
KINDERGARTEN-CHILD CARE CENTRE
WATERLOO STREET
PHONE: (07) 286 1953
PRIMARY SCHOOL INQUIRIES - 07 2863953 (Ben GUSE)
-07 2861008 (Pastor KIRSCH)

31 Drevesen Ave.,
Cleveland, Q.4163.
25th.May,1981.

Dear Robert,

Christian Greetings from the Redlands Parish.

Further to our telephone conversation today, informing you of our decision to extend a Call to you to be Principal of our new School as from the beginning of next year, I now forward some general information.

The enclosed brochure will explain the basic things concerning the School. We plan to call tenders soon, for the construction of four classrooms and administration block. The decision was reached to start the school with grades 1 to 4 and increase one grade each year. Enrollments for next year could exceed 60, thus requiring a third teacher.

We propose to provide part-time Secretarial support; also if you need to have some release from teaching for administrative duties, this will be provided. Two ex-Lutheran Primary Teachers (now married) live near the school site, and although they are now mothers of young families, they would be able to assist occasionally.

Our Parish is located on the Coast (Bay, not surf), about 38 km from Brisbane. The school will be about 11 km from a small sandy beach. Although beaches are few on the mainland, the Islands within the Bay are popular with families. Barges and Ferries run to most Islands. The district is still basically a vegetable growing area, with some areas developing into housing Estates. Many people live in the lovely clean, rural, coastal atmosphere and travel to work in Brisbane, as I do.

I should have mentioned in the third paragraph, that naturally after the third or fourth year of the school's operation, the Principal would be a full time non-teaching Principal.

We have been advised to budget for, and offer the basic Salary and Allowances as determined by L.C.A. The following figures are estimated at January, 1982.

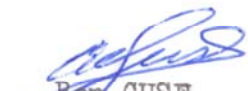
Basic Salary	-----	\$9980	
Medical allowance	-----	1636	
Car	"	-----	1331
Library	"	-----	163
Hospitality	"	-----	369
Travelling	"	-----	7.5km
Child	"	-----	205

We will provide a house and pay telephone rental and calls.

If you have any questions, please feel free to contact me on 07 2863953 (between 6am & 7am or 5pm & 7pm).

We pray that GOD will guide you in this important and prayerful decision.

Yours in Christ


Ben GUSE
SCHOOL COMMITTEE CHAIRMAN.

Faith Lutheran Primary School Reflections by Mr Robert Marriott (1st Principal)

The early 1800s were a turbulent time in Prussia, a former German state now situated in Poland. For reasons of state unity and security, Prussian leadership collected significant taxation, conscripted males for military service until they were 60 years of age and, for a time, required uniformity of religious worship among Protestants. In the 1830s, 40s and 50s several Lutherans responded to these impositions by emigrating to Australia where they established a number of small parish schools, predominantly in South Australia.

Whilst they cherished their heritage, these industrious dissenters made it clear through shows of loyalty to Queen Victoria, who had a German husband, that they now considered themselves British subjects. In those tolerant times, many Lutherans chose to cherish their "German" heritage by ensuring that their schools taught in English in the morning and in German in the afternoon. This foray into multiculturalism had disastrous consequences when approximately fifty South Australian Lutheran parish schools were closed in 1917 by an act of parliament as they were portrayed to be a threat to national security during the First World War. In other states the small number and size of Lutheran schools, meant that they were not seen as a threat and they were not required to be closed by parliament, though some German born staff were required to resign.

Prior to the Second World War some Lutheran schools were re-opened and later some new schools were opened. A resurgence in Lutheran schooling developed significant momentum in the 1970s and 1980s.



1982 was a time of significant and optimistic growth of Lutheran schooling in Queensland, fuelled by the increasing availability of federal and state government grants, rapidly increasing population growth and an evangelical desire to use Lutheran schooling to develop Christian education. Their growth in numbers mirrored Queensland's overall growth, which was presided over by Sir Joh Bjelke Petersen, a Lutheran premier.

Three Lutheran primary schools commenced in Queensland in 1982, following a pattern established within the Lutheran Church of Australia. These schools were firmly in the hands of local parishes. Faith school's development was the vision of men such as former Police Inspector Ben Guse (a member of Cleveland congregation), who persuaded others to support his foresight with money and effort. Significant donations from Mr. Albert Benfer and others began a culture of giving which has well supported the school.

Three possible sites at Wellington Point, Alexandra Hills and Victoria Point were proposed. Victoria Point was chosen because of its developed infrastructure.

On the 25th May 1981 Robert Marriott was called by the Redlands Parish to "be Principal of our new School"(sic). Ben Guse outlined plans to call tenders to construct four classrooms and an administration block. Enrollments were expected to exceed 60 within Years 1 to 4. No release time was offered to the principal, though some part-time administrative support and some non-defined voluntary release was mentioned. In those pre-fringe benefits times, the salary was about half that of a state school teacher, though there were some additional allowances.

The Redlands area was described as being "still basically a vegetable growing area" though some housing areas were being developed.

Other teachers in 1982 were Mrs 'Heidi' Kirsch, the wife of Pastor Karl Kirsch and Miss Merrill Klose a graduate of the Riverina College of Advanced Education. Pastor Kirsch had undertaken some teacher training and was interested in education and Heidi Kirsch had studied Lutheran schooling and had developed some theoretical concepts. They both oversaw the school's very early development.

Support for the school came from far a-field with over a third of a tonne of textbooks being donated by a state school in South Australia.

The architect for the school was John Marsson.



The first five years of Faith School's existence were characterized by rapid growth. In accord with the Lutheran Church of Australia's strong advice, Faith School was single streamed. The decision was taken to have no more than 28 students in any one class and classes were housed in separate classrooms.

Enrolments grew with approximately...

62 students in years 1 – 4 in 1982
110 students in years 1 – 5 in 1983
156 students in years 1 – 7 in 1984
190 students in years 1 – 7 in 1985
196 students in years 1 – 7 in 1986

Significant waiting lists were established after 1983 with approximately one person on the list for each student enrolled. Students traveled from as far a-field as East Brisbane and Cornubia.

Teaching staff appointed during this time included, Miss Jane Stansborough, Mr. Mark Smith, Mrs. Sue Franklin, Miss Jayne Doecke, Mr. Glen Mackinnon, Mrs. Elaine Faulkner and Miss Janet Hauser.

Of particular note were the close links that were established with the Family Sports Centre run by the Wally Hauser and his family. Students were coached in indoor sports such as basketball, squash, skating, volleyball, cricket, soccer, gymnastics and athletics and they competed enthusiastically. An oval and dam were purchased from the Hauser family, enabling students to enjoy a fitness area, sports on the new oval and even fishing in the dam.

Extensive tree and shrub plantings were actively supervised by Mrs. Sue Russell, who did much to develop school grounds, and a Koala habitat was established near to the school buildings. John Lewis, a Vietnam veteran, donated much of his time to act as a voluntary grounds-man. The nearby council oval was also used to good effect.

Academic standards at the school were considered to be good and the school developed a reputation for its care and expertise. In technological matters the school was a leader, purchasing an Apple computer in 1982, developing a school-wide media delivery system and promoting computer use for administration and students. In 1985 a library was established in a vacant classroom by Mrs. Heidi Kirsch.

The early years were focused on community development. The P & F was established in 1982 and a parent run uniform store was established in 1983 largely through the energy of Mrs Dorothy Dunstan. Funfests commenced in 1985 and parent sporting teams were developed by men such as Mr. Gary Hauser. There were many well attended "working bees" and the "family barbecue" built by Mr. Ian Baguley was a feature of the parent activities. As a result of these activities, parents reported a close link with the school and its teachers.

Mr. John Veltheim did much to monitor and provide a strong budgetary position for the school. From its strong financial position in 1984/5 a decision was taken to provide staff with a "state award" salary. This decision was controversial among Lutheran schools, as Faith was the first Lutheran Primary School in Australia to openly declare that the "labourer was worthy of his hire" in this manner. Only schools such as St Peter's paid the award to primary staff as they were considered to be part of the college 1 – 12 structure. Primary salary amounts were dominated by thinking formed when government grants were not provided to schools.

The first five years were a time of much forward planning and of close ties with Lutheran congregations. On one memorable day, over 100 people attended a service for school and church at Faith congregation, Redland Bay.



In the mid 1980s it was not unusual for school staff to experience rather tempestuous times. As the result of a series of events which Ben Guse described as difficult to understand and Ernie Holzapfel, the parish chairman, described as probably unfair but difficult to untangle, Mr Rob Marriott left the school. He was the longest serving principal for the time that the school remained a primary school.



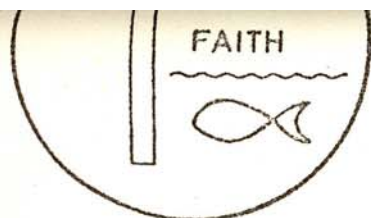
First Students enrolled at
Redlands Lutheran Primary School in 1982

Enrolment number	Surname	Christian Name	Year level in 1982	Number of years at Faith * = part year
1	Addicott	Matthew	1	6
2	Amble	Belinda	1	6
3	Baguley	Paul	1	6
4	Baker	Olivia	1	2*
5	Brazier	Rachel	1	7
6	Burke	Trelise	1	7
7	Clarke	Kristy	1	5
8	Doyle	Eileen	1	7
9	Edgeworth	Tabitha	1	5
10	Goleby	Darren	1	7
11	Kampe	Gail	1	7
12	Keith	Tia-Leigh	1	1
13	Krzovski	Paulina	1	6
14	Mackay-Fisher	Kirsty	1	7
15	Morrison	Shane	1	4
16	Pegg	Belinda	1	7
17	Porter	Scott	1	7
18	Pryce-Davies	Mark	1	1*
19	Steele	Glenn	1	6
20	Tomlin	Christy	1	6
21	Tunny	Helen	1	7
22	Vassallo	Courtney	1	7
23	Vincent	Heidi	1	6*
24	Wilson	Pepita	1	5
25	Barr	Terry	2	6
26	Beck	Julie	2	6
27	Faulkner	Sally	2	6
28	Franklin	Jennifer	2	6
29	Golder	Emma	2	4
30	Gould	Mark	2	6
31	Hargreaves	Myles	2	5*
32	Hauser	Michael	2	6
33	Kefer	Emma	2	6
34	Lloyd	Nathan	2	5
35	Lobegeiger	Jason	2	5
36	O'Shea	Shannon	2	6

First Students enrolled at
Redlands Lutheran Primary School in 1982

Enrolment number	Surname	Christian Name	Year level in 1982	Number of years at Faith * = part year
37	Pearce	Rodney	2	6
38	Russell	Emma	2	6
39	Sharp	Kirsten	2	6*
40	Sharp	Lachlan	2	6
41	Bennett	David	3	6
42	Charles	Stephen	3	5
43	Clarke	Matthew	3	5
44	Hauser	Jason	3	5
45	Jacobs	Melissa	3	1*
46	Kampe	Terry	3	5
47	Lang	Charles	3	5
48	Lovewell	Natarsha	3	5
49	Magee	Peter	3	4
50	Marriott	Melissa	3	5
51	McKeague	Nicole	3	1*
52	Melbourne	Alastair	3	5
53	Soundy	Catherine	3	5
54	Veltheim	Sheridan	3	5
55	Ballantyne	Michael	4	4
56	Barr	Tracey	4	4
57	Beck	Shane	4	4*
58	Curran	Anthony	4	4
59	Farina	John	4	4*
60	Fowler	Gregory	4	4
61	Franklin	Catherine	4	4
62	Lloyd	Sarita	4	4
63	Steele	Tamara	4	4
64	Morey	Delia	2	4*
65	Macqueen	Duncan	1	6*
66	Hill	Elisha	2	5*
67	Wilson	Lisa	2	5*
68	Wilson	Kenneth	4	4*
69	Kosonen	Tina	2	6*
70	Butler	Jacqueline	1	4*
71	Butler	Naomi	4	4*
72	Francis	Simon	1	2*
73	Paul	Celeste	4	2*
74	Lewis	Haydn	4	4*

NEWSLETTER NUMBER 2



PRIMARY SCHOOL 27 Waterloo St. CLEVELAND

ENQUIRIES--	Pastor KIRSCH	286	1008
	Margaret KEFFER (Secretary) ..	206	7423
	Joyce KRAUSE (Treasurer)	206	6209
	Maureen VELA (Uniforms)	207	2692
	Ben GUSE (Chairman)	286	3953

NEWSLETTER

Christian Greetings to you, with this our second Newsletter.

Faith Primary is proceeding nicely towards final completion by the end of the year.

ENROLLMENTS are still coming in and we envisage a three Teacher School with up to 70 Pupils in Grades 1 to 4 for the 1982 School year.

FOUNDATION STONE. You are invited to attend the site in Link Road, at 4 p.m. on Sunday, Nov. 1st, on the occasion of the laying of the Foundation Stone. The block of four classrooms will be well advanced, but the Foundation Stone will be laid in the Administration Block which will be commenced about that time. We welcome all Parents and Friends to come together on occasions such as this, as it affords an opportunity to meet fellow Parents who will have their children attending the School also.

THE OFFICIAL OPENING of the School will take place early in 1982.

TERM FEES. You are no doubt aware that some Government Funding has been provided for the building of the School and a local fund-raising appeal realized additional funds. However, these funds are for the building of the School. The funding for the School to function (Teacher's salaries etc. etc.), is provided by separate Government grants, plus the term fees paid by Parents. The Government contribution for each child enrolled, does take effect from the start of 1982, but the first payment is not received until about mid-year. This makes it financially difficult during the first half-year of the commencement of a new School. It means that new Schools must borrow (at high interest rates) to carry on till mid-year. The other alternative is, that if enough Parents could assist by paying their total annual fees (\$400) for 1982, within these next few months, it could eliminate the need for borrowing. If you are able to do this, it will assist greatly.

BUS SERVICE. As stated in our first Newsletter, a Bus will run from the Cleveland Lutheran Kindergarten/Pre-school Centre in Waterloo St., to the School and return each day; if it is warranted. Would all Parents who intend to utilize such a service, please now indicate by writing to the above address. A small weekly fare will probably need to be charged to cover running costs.

UNIFORMS. Most Parents have lodged their order forms. Any Parents of newly enrolled Children, who have not received an order form, may contact Maureen VELA on 207 2692. The Uniform will be modelled at a Chicken & Wine/Fashion night at the Cleveland Kindergarten Hall on Saturday night, Nov 21st. (For tickets- phone- 286 1953).

PARENTS AND FRIENDS ASSOCIATION for Faith Primary will be formed in February, and you will be advised later of the date of the first meeting. All parents are encouraged to play an active part in the functioning of the School. In the meantime, the School Development Committee has organized the first Street-stall which will be held in Cleveland (near Despots) on Friday the 4th. December, all day starting at 8am. If you can contribute any of the usual things that are sold on Street stalls (cakes, veges, jams, potted plants etc), it would be greatly appreciated. Please deliver them to the Stall as early as possible (around 8am). Pies (meat & fruit) will also be sold on the Stall, but it would assist in the ordering, if you could place your order by phoning one of the above numbers.

One year on.....

27th January, 1983.

Rev. T.T. Reuther,
Lutheran Church House,
58 O'Connell St.,
NORTH ADELAIDE S.A. 5006.

Dear Tom,

The following is a short article concerning
'Faith' Redlands' Lutheran Primary School.

On January the 24th 1982 after planning and building had been undertaken by a building committee from the Redlands' parish and the community the school commenced operations with a service of dedication and opening only 12 weeks after the foundation and corner stone was officially set on November the first 1981.

At its opening there was room and facilities for 112 children (its anticipated size after 2 years) provided. This included four attractive classrooms, two withdrawal rooms, a covered assembly area and an administration wing set on a beautiful site bounded by playing fields and sports facilities only a short distance from Moreton Bay. What a wonderful thrill it was to see 60 children ready to attend and to know that their parents had all expressed a desire for an education 'based on values expressed in the Christian faith.'

'Faith's' growth - as is today common with many Lutheran schools has been quite remarkable. Today there are 110 children and waiting lists proliferate. Indeed, after discussion with all potential parents, highlighting the total integration of the christian faith in the school the general desire to come to 'Faith' has grown to the point of enquiries coming daily.

The extent of the need for a truly christian education is almost unbelievable. Continually the void in the lives of those parents who are searching and the enthusiastic desire of those who are christians, serves to emphasize how truly practical and meaningful our faith is.

We at 'Faith', in fellowship with so many working for the Lord in other places, daily stand in awe of the power of our wondrous loving God and thank Him that we may serve Him in such an exciting endeavour.

Author of this letter is unknown.

WHICH SCHOOL FOR YOUR CHILD?

Advertisement in The Redland Times
Wednesday, 2 September 1981



In January, 1982, a new primary school will open its doors to the Redlands Community. Yes, it will be a nicely designed new school, but it will have much more to offer your child.

The school will be staffed by teachers with top academic qualifications, who also possess and exhibit high Christian ideals, which will flow on to the lives of their pupils.

They will be dedicated to personalised teaching (pupil numbers in each class will be kept low), and pupils will be given every opportunity to develop their personal talents in:-

1. The communication skills of listening, reading, writing and speaking.
2. Physical skills and sport.
3. And all other areas of the curriculum as set out by the Queensland Department of Education.

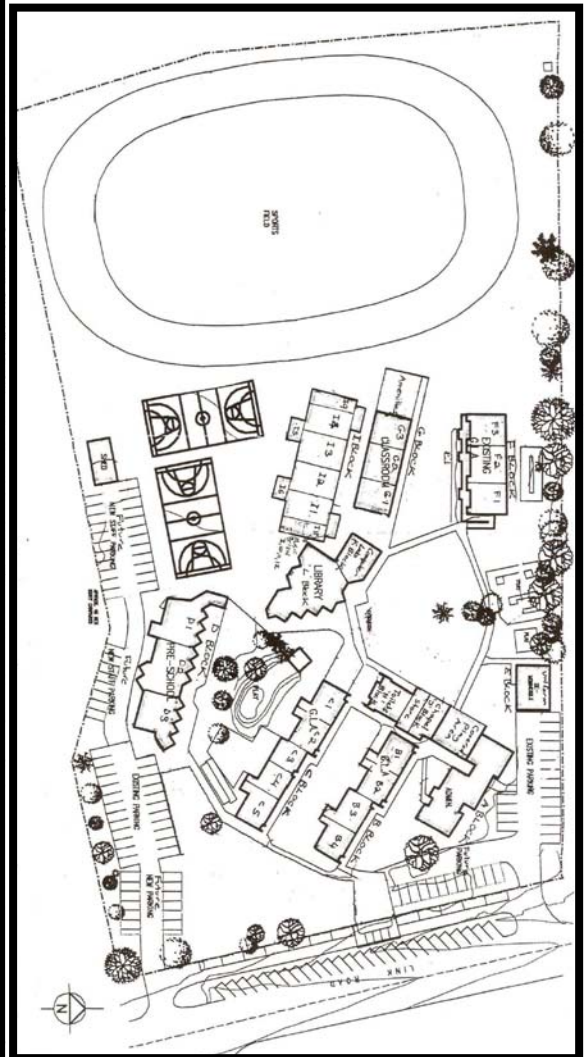
The school is being sponsored by the Redlands Lutheran Parish and has received additional support from the Redlands Community. Enrolments of children for years 1 to 4 in 1982 are still being received and are open to members of all Christian denominations.

The school will progress one grade each year up to grade 7 in 1985. School fees will be \$400 per annum for the first child of the family, reducing \$20 per annum for each additional child.

The School Principal, Robert Marriott, will be available for interviews at Cleveland this week, on Thursday 3rd, Friday 4th, Saturday 5th and Monday 7th.

Appointment times have been allocated to the parents of approximately 50 children who are now enrolled. Other parents who wish to enrol their children or wish to speak with the principal before deciding, may make **appointments** by phoning **206 7423** or **286 1008**.

The contract to build the school has been awarded and the builder will be on site on September 7th. The school and landscaping is scheduled for completion by early January, 1982.





Faith Lutheran College, Redlands
Faith in Christ ... prepared for life.
25 Years of Education in the Redlands

Faith becomes a College....

The journey continues



Michelle Day (2007 College Captain), Pastor Tim Jaensch (President - LCAQD), James Flower and Meg Bradshaw check out the Beveridge Road site at the Dedication Ceremony on Sunday, 27 October 2002 at 3:30pm

WHEN NO!... MEANS GO!!!!

From Gavin Buhse



It only seems like last week that I had just knocked the top off a stubby and was kicking back after another horrendous and hectic day at work. All three kids were running a muck after dinner, Karl had lost his nappy while Jodie and Lee were fighting over the TV. Karen had gone off to her first P&FA meeting at the new school. Ahhhh!! Serenity at last. This was early February 1992.

I hadn't even finished the first beer when the phone rang. It was Karen on the other end wanting to know if I would consider filling a vacancy on the School Council. At that time I had just finished 2 years as Chairman of St. Johns Kindergarten at Eight Mile Plains and there was no way known that I was going to do another long stint like that again. Only after reassurance from the Principal Mr. Ian Mibus that it would be only temporary, I agreed.

That year was a big learning curve for me. Ian had only just taken on the school and he had a mission to fill the school and turn around the falling student numbers. 1992 saw the enrollments at its lowest ever, just 155 students for 7 grades, and my eldest son, Lee, was in Year one. It only seemed like a few months into this temporary position I found myself voted into a position a little more permanent, Chairman of the Council.

The Council meetings were long and tough, there was much number crunching, self analysis, soul searching, praying and finally planning. It became very clear, early in this process that the school was facing a lot of competition in this fast developing area. Although Faith was the first Christian school in the Redlands, it had been overtaken by many newcomers.

Faith was always strong at the lower end of the school, and Ian stressed that we had to build a very stable base that would continue to feed the school. The best way to guarantee this strong base was to develop a Preschool. The only quandary for us was that Faith was built on a small parcel of land and any development would be difficult. But as it seems miracles do happen. A small parcel of land became available between the School and the YMCA.

This was a big step, a huge leap of faith to go into so much debt at such lean times. As I recall now I don't think that failure was ever an option on our spread sheets, or in our 5 year strategy plan. So we jumped at it. I must say that there were many sleepless nights after the quotes for the Preschool building came in. They were in excess of \$600,000. I think that was the time we created our School Council motto, 'Bite off more than you can chew and then chew and chew and chew some more'.

In 1996 Jeff Gork took over as Principal of Faith and welcomed our first Preschool class. Now that the Preschool was in place we could begin with the double streaming of the school and we felt that this would ensure Faith's future. How wrong could we be.

After just a few short years it was very evident that although the lower classes were healthy and growing, the upper grades, especially Years 6 and 7, were still struggling. So it was back to the forensic work to understand what was happening. We quickly identified that we were losing the upper grade students to other establishments that could guarantee these children places in their secondary schools.

Just a short drive from Faith lay our answer, Redeemer Lutheran College, Rochedale. Redeemer has always had an excellent reputation in the area for secondary education and it seemed logical that if we could guarantee flow on of our students to Redeemer, this would stop the erosion of our upper grades.

Early 1997 a meeting was arranged with the Redeemer Principal, Robin Kleinschmidt and Faith's delegation, Jeff Gork and myself. This meeting lasted for about two hours and at the end of it, it was very clear that Faith Lutheran Primary

School would not be considered a feeder school for Redeemer. Students would not receive automatic entry to Redeemer. The outcome of the meeting was announced at the next Council meeting, everyone was devastated.

I think it only took a millisecond until a hair brained suggestion was uttered in the meeting room, "Let's build our own College". It took off like wild fire. From rejection, doom and gloom, a big NO!! came hope and enthusiasm Lets GO!!!.. Only one small problem we didn't have any room to build a College. Two small problems, we didn't have Government approval, maybe three problems, we didn't even have the approval of the Lutheran Education Department. We stopped there Let's do it any way. Remember our motto, 'Bite off more than you can chew and chew and chew and chew some more". We nearly choked on this one.

In 1998 demographic studies were commissioned and applications were lodged with both the Department of Non-State Schools for secondary schooling and Lutheran Education Queensland. All were rejected, and we still didn't have any land, but that didn't stop us. Over a 2 year period, I forget how many applications were submitted to the Government and how many presentations were made to LEQ, but I think we were beginning to wear them down.

Over the same 2 year period we had investigated 6 parcels of land, all were rejected by Local Council for zoning or development or had restricted access by the Department of Main Roads. Another miracle happened, we were lead to an old yam farm on the corner of Beverage Road and Cleveland Redland Bay Road, which adjoined a pony stud. Within a month we had signed contracts on both. Now we were getting somewhere. So we had solved one problem.

One step forward two steps back. During this period Jeff Gork left to take up a position at Living Faith Primary School. Now we didn't have a Principal. All's not lost yet, Deb Osland stepped in as acting Principal for a period of time and then we were able to secure Ms Lois Pfitzner for a 1 year term during 2001 to fill in as Principal.

2001 was the year it all started to happen. We had the land. Applications were again lodged with The State Government and LEQ and we began the search for the right leader. Someone who would share our vision, some one who had the skill to bring it all together. Someone who could stand in that yam paddock and not think we were all crazy. The whole year flashed by and nothing had changed, until the closing service. It was only 5 minutes before the start of our closing service that Lois received the call from the Minister for Education's Office announcing the approval to establish a secondary college. I'll never forget cheers and shouts for joy that erupted from the parents, teachers and students when I announced it in my address. Two down two to go.

After holding interviews in late 2001, the Council had extended an invitation to Anthony Mueller and his wife Kathy to attend an informal BBQ dinner where we had intended to offer him the position as Principal. As we reached the formal business part of the evening, I am sure that Anthony was totally oblivious to the fact that he had been surrounded by several Council members, all in strategic positions, to block any chance of escape. I am sure that Anthony was also oblivious of how desperate these people were. But I am happy to say that he is a man of vision and accepted the offer. I would hate to think of what might have been if the decision went the other way. If Anthony was lucky he may have had to finish his teaching career from a wheel chair.

Securing Anthony as Principal was number 3 in place, and shortly after that Lutheran Education Queensland gave us their approval. As they say in the classics 'The rest is history'. Anthony has since then assembled one of the finest team of educators, leaders and administrators you would find anywhere in Australia. I also know that not only every Council member, but every one that has participated in any way has a great feeling of humbling pride from being involved in this journey. Although there is still a long way to go.

On reflection, the events that we saw as big NO's were in fact just trials to ensure that our resolve was true and our goals were clear and for the right reasons. Nothing that is worthwhile comes easy, and I thank God that He was always there to guide us.

In Christ's service

Gavin Buhse
College Council Chairman (1992 - 2007)

FAITH LUTHERAN COLLEGE - REDLANDS

Response To Objections

Comments on the proposed extension into secondary school have been received from:

- Redlands College
- Sheldon College
- Victoria Point State High School
- Brisbane Catholic Education
- Education Queensland
- Anglican Schools Dept
- Cleveland District State High
- S. Trollope
- Cannon Hill Anglican College

Introduction:

As was stated in our original application, Faith Lutheran Primary School was established in 1982 to provide this community with a Christian Education facility with a Lutheran ethos. The school has steadily grown over these years and currently has an enrolment of 310 students. The present double streaming of the school will result in a P-7 school of approximately 400 students in 2003.

Faith Lutheran Primary School was the first Christian (independent) school in the Redlands. Over the years the school community has witnessed the establishment of many other independent schools in the area.

Each of the schools which have commented on the Faith Lutheran College proposal commenced operation well after the establishment of Faith Lutheran Primary School.

The development in recent years of P-12 schools has created a situation where Faith Lutheran Primary School is now one of the very few schools which cannot offer its students a continuity of education to secondary levels. As a result of this, students from Faith disperse to up to ten high schools in this area with no school gaining a significant majority.

This is far from an ideal situation for the students and parents of Faith Lutheran Primary School, a factor which has been highlighted by the local State Member for Redlands, Mr John English, the Assistant Director-General, Schools (Metropolitan), Mr Tom Mould and the Brisbane Catholic Education Office.

The sole purpose for the application by Faith Lutheran Primary School to expand into secondary education is to provide an ongoing Lutheran education for those families in the Redlands who have explicitly indicated their desire for such an education.

In our application of March 2001 we clearly demonstrated, through the use of available data on demographics, growth statistics and other relevant information, the application fulfilled all of the criteria for assessment. Interestingly, those schools that have objected to the proposed expansion have produced facts and figures (not all of which are clearly sourced) to indicate the application does not fulfil the criteria. Those schools that have supported our application also used some of the same data, but reach the same conclusion as Faith Lutheran Primary.

All that can be gathered from this is that the available data can be used to support either side of the argument.

What cannot be disputed however is the fact that the proposed school has a demonstrated support base and that there is no Lutheran alternative in the Redlands area. Those schools that objected to the expansion have all commented that there are 'Christian alternatives' in the Redlands; these being Calvary Christian College (Uniting Church), which you will note has not lodged an objection, Carmel College (Catholic), which has supported our proposal on the basis of choice and the non-denominational Redlands and Sheldon Colleges. We will address these points individually.

REDLANDS COLLEGE

Redlands College has not indicated that the proposed development will adversely affect their school. They have also stated that "it is quite clear that the growth is not there", a statement we have clearly indicated in our application is not correct. Further, Redlands College has not indicated a source for its assumptions.

We refute the claim most strongly that:

"the proposed catchment includes at least 4 non-catholic, non-government schools of which 2 are Christian schools with an ethos not unacceptable to the parents of Faith."

This statement is in error and therefore cannot be accepted. Parents of Faith Lutheran Primary School have indicated strongly that they would prefer to send their children to a local Lutheran Secondary school but currently cannot, due to a lack of choice.

Further, established statistics have demonstrated that neither Redlands College nor Calvary Uniting College has received a significant intake from Faith Lutheran families, indicating that they are not acceptable options. Parents would prefer a distinctively **Lutheran** school with an underlying philosophy and theology which is clearly different to the above mentioned schools.

The assertion that Redeemer Lutheran College is an acceptable alternative Lutheran school is not correct. There are Lutheran parents of children at Faith who have not sent their children to Redeemer College for a variety of reasons including distance and cost. There is no automatic acceptance by Redeemer of Faith students, and Redeemer continues to have waiting lists.

CLEVELAND DISTRICT STATE HIGH SCHOOL

We are disappointed and saddened by the suggestion that the delay in relation to the forwarding of our application and the subsequent timeframe for objections was a deliberate action on our behalf. As the committee is well aware, the delay was due to factors well outside this school's control and we would hope Cleveland State High is made aware of this fact.

The fact that the proposed secondary campus will be situated on a separate parcel of land does not make this an application for a new school and not an expansion to secondary. The reason for the separate campus is due to the primary school being land-locked and therefore unable to support the buildings required for the secondary classes. In addition, the secondary campus is within the distance limit imposed by regulations, and thus this concern, in any case, is irrelevant in this approval process.

Cleveland's survey of its 'Lutheran' students has little credibility as it based on 24 students out of over 1000 as opposed to our own surveys of over 350 current students of which 82% indicated they desired a local Lutheran college.

Further to this, Cleveland's assumption that this would mean a loss of 50 students is demonstrably incorrect. As our statistics show only three Faith students have gone on to Cleveland High in the past four years and all of those were in 2001. This was a direct result of our application being rejected last year and students not being able to find alternative places at late notice.

It should be noted that the greatest decline in numbers at Cleveland came with the opening of the Victoria Point State High School. Sheldon has had very little, if any, impact on Cleveland State High and a Lutheran secondary school would do likewise.

Again, Cleveland uses the argument of viable Christian alternatives and again we disagree. Our families and others in the community want not just a Christian but a Lutheran choice.

Cleveland has raised the issue of curriculum which is outside the criteria for assessment and, as such, requires no response.

VICTORIA POINT STATE HIGH SCHOOL

Victoria Point was opened due to a very real need for more secondary places in the south-eastern end of the Redlands, a need that continues to exist today. This school has been very successful, largely at the expense of the Cleveland State High, and will continue to be successful in spite of any future development of a Lutheran Secondary School. In the submission by Mr Tom Mould, Assistant Director-General, Schools, he states there will be "a minimal impact on Victoria Point State High School".

We take offence at the assertion that a Faith Lutheran College would have a narrow secondary curriculum focus. This is a baseless claim and one which does not fall within the criteria for approval of a secondary school. Quite aside from this, the curriculum of Faith Lutheran College will be broad and provide for the specific needs of our students both educationally **and** spiritually.

CANNON HILL ANGLICAN COLLEGE

This objection is both unexpected and of little relevance when coupled with the earlier comments of the Anglican Schools Office. The school is well outside the catchment area for Faith and, as stated by the Anglican Schools Commission, only one former Faith Student has moved to Cannon Hill.

SHELDON COLLEGE

We maintain that the fee structure and philosophy of Sheldon College and Faith Lutheran Primary School are so significantly different that the two schools are catering for distinctively different markets. Faith Lutheran Primary offers a Christian education from a definitively Lutheran perspective and ethos and we wish to have the opportunity to continue this through to secondary levels.

While Sheldon claims to offer a Christian ethos it should be noted this is a relatively new 'inclusion' at the school. It is certainly not something the school was founded on. In fact Sheldon portrays an elitist perspective and structures its fees accordingly.

Sheldon's comment that large numbers of past students of Faith Primary currently attend other schools in the area is remarkable. Where else would they think these students could go? What Sheldon has highlighted is exactly what Faith has been arguing, that there is no one school in the Redlands that provides an obvious alternative for our students. The fact that no one school benefits greatly from Faith Primary is an indication that current families are divided as to what the best option currently is. And it also reinforces our claim that no one school will be adversely impacted.

To suggest the purchase of land is presumptive is irrelevant and shows a surprising level of ignorance on behalf of Sheldon College. There is a severe lack of affordable land in the Redlands area and, as a not-for-profit organisation, Faith does not have a bottomless pool of money with which to fund the school. Purchasing the land was a very difficult decision for the school, but one which was necessary to demonstrate to parents and supporters that we are committed to the development. If the worst were to happen and a Redlands Lutheran college does not go ahead, the land can always be resold.

Faith Lutheran Primary School has proposed this expansion in an effort to provide an ongoing Lutheran education to our current families and those others in the community who have indicated their support for the proposal. Sheldon should welcome the logic of our provision of education, rather than being concerned about it.

In rejecting our application in 2000, the Planning Committee indicated its concern for Sheldon and the need to allow Sheldon to further develop its enrolment. It will be 2003 before Faith will commence its first Year 8 class; another two years after the date proposed last year. Surely this gives Sheldon ample opportunity to consolidate their enrolments. Further, even as Faith grows, Sheldon will still gain support from parents who seek the style of education they offer. Sheldon's fee level will, however, put them out of the reach of many of our parents and supporters.

SUMMARY

In summary, we believe that the development of Faith Lutheran College Redlands, (P-12) will not significantly affect future enrolments of established secondary schools in this area. We already have an established clientele which over a period of more than three years has continued to indicate overwhelmingly their wish for a local Lutheran secondary school.

It is pleasing to note the letters of support for the proposal from Catholic Education, Mr Tom Mould from Education Queensland and S. Trollope. We understand the Minister for Education, the Hon. Anna Bligh MLA, has received a number of similar letters and we currently have over 400 signatures on petitions of support from both current Faith families and members of the wider community. We have the support of our local council, state and federal representatives, the local Lutheran Parish, the Lutheran Schools Department and, most importantly, our current students.

We fundamentally believe that families from Faith Lutheran Primary School have a right of choice.

Based on the application criteria, we believe approval should be granted for this school to proceed into secondary education.

THE DEVELOPMENT OF “FAITH”

<i>Date</i>	<i>Development & Action</i>
Late 1970s	Parish discussion & support for the establishment of a Lutheran Primary School in the Redlands
1980	Ben Guse chaired Steering Committee for the establishment of Faith Lutheran Primary School. (First non-government school in the Redlands.)
1981	Albert Benfer elected as inaugural Chairperson of the Faith School Council
1982	The founding of Faith Lutheran Primary School
1986	Faith grows
1980's	Development, growth and buildings continue
1993	First talk of some development of the Primary School - specialisation, double streaming, preschool, secondary
1994	Faith purchased a parcel of land adjoining our block from the YMCA to enable us to build a two unit Preschool
1996	First Faith Preschool class. Oversaw development of preschool program.
1997	Commenced double streaming from Preschool
1998	Demographic study commissioned to investigate the viability of establishing a secondary school. Approval from LEQ to further investigate
1999	First application lodged to Department of Non-State Schools for secondary schooling - unsuccessful
2000	Further application lodged for secondary schooling to LEQ - decision deferred
2000	Purchase of Beveridge Road land in October
2001	Application lodged for secondary schooling to LEQ – decision deferred again. Application lodged to Department of Non-State Education - approval granted December 2001
2002	Approval granted by Lutheran Education Queensland & LCAQD Change of name to Faith Lutheran College, Redlands Project Management team appointed Beveridge Road site dedicated, October
2003	Beveridge Road Stage 1 buildings commenced in March - 3rd Preschool class (triple streaming) commenced Beveridge Road Buildings completed in September Middle School commenced operations at Beveridge Road in October
2004	Official Opening, 8 February Stage 2 - Classrooms and specialist areas commenced construction - Beveridge Road Oval completed. Link Road Classrooms (I Block)
2005	Official Opening Beveridge Road Stage 2 Stage 3 - Senior School Science Block Beveridge Road and Stage 9 - Amenities Block Link Road Hardcourts at Link Road and Beveridge Road Land purchased from Redlands Fellowship at Beveridge Road
2006	Official Opening Beveridge Road Stage 3 Stage 4 - Middle School GLAs, Staffroom, Storage
2007	25 Years of Education by Faith in the Redlands First Year 12 cohort graduate from Faith Lutheran College, Redlands Stage 10 - Infill under I block - Link Road Cover over Link Road Hardcourts Second Tech and Design Shed built at Beveridge Road Stage 5 - Senior School 8 GLA classroom block and amenities start September 2007 and due for completion in April 2008 (Worship area to be included)

Interesting Facts About Faith.

1. Faith was established by a group of families from the Lutheran parish comprising congregations at Cleveland, Redland Bay and Mt Cotton. The parish has since been realigned with Mt Cotton joining the Tingalpa congregation.
2. Faith was the first independent Christian school to be established in the Redlands.
3. The Wally Hauser family originally owned the Link Road land and were instrumental in the acquisition of the property for Faith.
4. The Link Road site was part of a dairy farm that grew watermelons, pumpkins, strawberries and cucumbers.
5. A 40 acre site at Alexandra Hills was also considered but because the site was not sewerred, was not taken up.
6. There was originally a dam on the Link Road oval which contained eels in it that "everyone used to chase".
7. Albert Benfer was the first Chairman of Faith and Ben Guse (grandpa of current students Scott and Kimberley) was Chairman of the initial steering committee.
8. David Jull, Federal Member of Parliament, opened the first building on Link Road in 1982 and opened the first building on Beveridge Road when still the federal member in 2004.
9. Faith Foundation Day/ Founders' Day July 31st 1981, was the day when written expressions of interest in enrolment was due and to this day 36 expressions of interest were received, enough to proceed with the school and open in Term 1 1982.
10. B Block on the Junior School was the first building. M Block on the Middle School.
11. Faith Lutheran Preschool commenced in Term 1 1996. Faith divided into Junior School (P-6) and Middle School (Years 7 and 8) in 2003. Faith has expanded from there by growing a year level each year with the Senior School Year 10 class commencing in 2005 and the first cohorts of Year 12 students graduating in 2007.
12. In 1996, land exchanged hands along the boundary with the YMCA to create a space that could house the Preschool and be a space for their swimming pool.
13. Double streaming (2 classes at each year level) commenced at Faith in 1997. Triple streaming in the Junior School commenced in 2003 with one class being added each year from Preschool.
14. Faith Lutheran College, Redlands was originally called Redlands Lutheran Primary School, and later Faith Lutheran Primary School before becoming Faith Lutheran College, Redlands in 2003. Faith was coined because it was a step in Faith to establish it. The Lutheran Congregation at Redland Bay is also called Faith.
15. The first application to the State government for approval to expand to secondary in 1999 was not approved.
16. The second application was approved at the end of 2001 and the approval was received just after 7.00pm at their end of year closing service in December and announced to the gathering that evening.
17. Year 7 and 8 classes commenced in the Middle School at Link Road in 2003 and shifted to Beveridge Road in October 2003 for the start of Term 4. Year 8 classes commenced on Link Road in the Computer Room and in the current uniform and OSHC rooms.
18. The modular building on Link Road was the first of its type produced by James Hardy in the mid 1990s.
19. The Uniform Shop used to be housed in the small storage space alongside the Tuckshop in C block at Link Road.
20. During the 1990's Sunday evening services were conducted at the Link Road Chapel for 1-1/2 years.
21. OSHC commenced in the late 1999.
22. The original logo for Faith was modified by Principal Ian Mibus during his time at Faith in the early 1990s

23. The Beveridge Road Campus was originally a yam farm and a Shetland pony stud. A large concrete stable for Shetland ponies was located where the oval now stands. A complicated deal to purchase these parcels of land on 2 separate titles was negotiated and the land purchased in 2000, before any approvals had been given.
24. 4.5 metres of land along the Beveridge Road frontage was resumed by the Redland Shire Council as a condition of development to widen the road and provide the footpaths and width for services.
25. The location of the eastern gate at Beveridge Road is further from the boundary than planned because a bird was nesting in the tree located there and council would not allow the tree to be cut down. When the road was widened 6 months later, as part of the council conditions, the tree needed to be cut down. The section of land along the eastern boundary needs to be free from buildings as a fauna corridor.
26. Faith originally had the Houses of MacKellar, Lawson and Paterson, but were changed to the islands (Coochiemudlo, Macleay, Peel and Russell) in 2003 with the establishment of the College after a competition ran in the community.
27. The original administration on Link Road was the small middle section of the current administration Block
28. Approval to expand into Secondary education was given from LCAQD at their synod in June 2002 and the first Year 8 class commenced in Term 1 2003.
29. The Head of Middle School, Deb Osland had an office in Terms 1-3 of 2003 which was a storage cupboard/ kitchenette, alongside the server room in A block on Link Road.
30. Faith Foundation which runs the uniform shop, canteens, hiring of facilities etc was established in 2004.
31. The land in the south east corner of the Beveridge Road property was purchased from Redlands Fellowship in 2005. Most of this area is an Environmental Protection Area, but an area of approximately 2250m² is available for development.
32. Regular Sunday morning worship "Faith Celebration" commenced at Beveridge Road in March 2005.
33. 7000m³ of fill and 3000m³ of top soil was brought into the property to create the playing fields. Much of this was donated from the local shopping and aged care residences developments of 2004.
34. A dam used to exist in an area alongside/under the Science block on Beveridge Road.
35. Gavin Buhse was elected Chairman of Council and after one year on Council and in 2006 he is in his 15th year as Chairman.
36. Faith Lutheran Community Kindergarten opened in March 2006. Part of an existing drive through at the front of Link Road was taken up for this development and a drive through at the front of Link Road was negotiated with Council and built by Faith.
37. Faith will have its first cohort of Year 12 students graduate in 2007 coinciding with the celebration of 25 years of education in the Redlands from Faith.

BUILDING PROGRAM AND PLAQUE INFORMATION

Building	Commenced use	Officially opened	Opened by	Bible Verse used	Council Chairman / Principal
Link Road					
Link B Block /Stage 1	Jan 24 1982	1982	David Jull MP	Romans 11:17-21 " you stand by faith in Jesus Christ....."	Albert Benfer / Robert Marriott
Link C Block / Stage 2	Jan 22 1984	1984	Mr LJ Keogh / Pastor C Helbig		Albert/Benfer / Robert Marriott
Link A Block /Stage 3	Jan 1993	4/4/93	Mr J Budd (MLA)/ Pastor R Erickson		Gavin Buhse/Ian Milbus
Link D Block / Preschool & 2 classrooms Stage 4	Jan 1996	9/2/96	J Hegarty MP		Gavin Buhse / Jeff Gork
Link F Block /Transportable Stage 5	1998				Gavin Buhse / Jeff Gork
Link Admin upgrade/E Block/Library Stage 6	Jan 2000	2/4/2000	David Jull MP		Gavin Buhse Greg Lees
Link G Block/Stage 7	Jan 2001	4/4/2001	Pastor M Richter		Gavin Buhse / Lois Pfizner
Link D Block/Preschool 3rd Classroom	Jan 2003	3/4/2003	Gavin Buhse		Gavin Buhse / Anthony Mueller
Link I Block/Stage 8	Jan 2005	17/4/05	Andrew Laming MP	Proverbs 8:34 "Blessed is the person who listens to (Jesus), watching everyday at his doors, waiting at his doorway."	Gavin Buhse / Anthony Mueller
FL Community Kindergarten	March 2006	24/4/06	John English MP	Mark 10:14 When Jesus saw this, he was indignant. He said to them, "Let the little children come to me, and do not hinder them, for the kingdom of God belongs to such as these".	Gavin Buhse / Anthony Mueller
Hard Court	Nov 2005				Gavin Buhse / Anthony Mueller
Link Amenities Block Stage 9	Oct 2005	15/3/06	Dr Adrienne Jericho	Hebrews 11:1 "Now faith is being sure of what we hope for and certain of what we do not see."	Gavin Buhse / Anthony Mueller
Hard Court Cover ("The Big Shed") & Stage Area	29/7/07	29/7/07	25th Anniversary Worship Service		Gavin Buhse / Anthony Mueller
Link I Block lower floor & Chapel Stage 10	Jan 2008				Gavin Buhse / Anthony Mueller

Building	Commenced use	Officially opened	Opened by	Bible Verse used	Council Chairman / Principal
Beveridge Road					
Stage 1 Middle School	Oct 2003	8/2/05	David Jull MP	2Peter 3:18 "But grow in the grace and knowledge of our Lord and Saviour Jesus Christ. To Him be glory both now and forever. Amen"	Gavin Buhse / Anthony Mueller
Stage 2 Hospitality	Feb 2005	17/4/05	John English	Proverbs 2:10 "The Lord's wisdom will enter your heart and his knowledge will be pleasant to your soul."	Gavin Buhse / Anthony Mueller
Stage 2 Middle School undercroft	Jan 2005	17/4/05	John English	Proverbs 2:10 "The Lord's wisdom will enter your heart and his knowledge will be pleasant to your soul."	Gavin Buhse / Anthony Mueller
Stage 2 Haysshed	Jan 2005	17/4/05	John English	Proverbs 2:10 "The Lord's wisdom will enter your heart and his knowledge will be pleasant to your soul."	Gavin Buhse / Anthony Mueller
Oval	Feb 2005	No			Gavin Buhse / Anthony Mueller
Technology and Design Workshop	Feb 2005	No			Gavin Buhse / Anthony Mueller
2 Hard Courts	Nov 2005				Gavin Buhse / Anthony Mueller
Canteen	Oct 2005	No			
Stage 3 Science Block	Jan 2006	15/3/06	Dr Adrienne Jericho	Hebrews 11:1 "Now faith is being sure of what we hope for and certain of what we do not see."	Gavin Buhse / Anthony Mueller
Sports Shed	2006	No			
Stage 4 Middle School /Staff Areas	Jan 2007	21/7/07	Gavin Buhse	"Trust in the LORD with all your heart and lean not on your own understanding; in all your ways acknowledge him, and he will direct your paths." Proverbs 3: 5-6	Gavin Buhse / Anthony Mueller
Tech & Design Workshop No. 2	17/7/07	16/7/07			Gavin Buhse/Anthony Mueller
Stage 5 Senior School /Worship Assembly /Area	April 2008				
Stage 6					

FAITH LOGO



FAITH LUTHERAN PRIMARY SCHOOL

A School of the Redlands Lutheran Parish

Postal Address: P.O. Box 3062,
Victoria Pt. West, 4165.

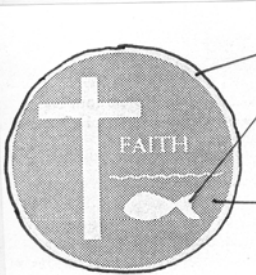
Link Road,
Victoria Point, 4165
Phone: (07) 207 7042

Principal: Ian S. Mibus
B.Sc., Dip.Ed., M.A.C.E.A.



NAVY BLUE

WHITE (B) COPY OF PHOTOGRAPH
OF SPORT T-SHIRT



GOLD

CURRENT PROSPECTUS - 2 COLOUR

SPECKLED LIGHT BLUE



A POSSIBLE ALTERNATIVE
AS CURRENTLY ON
FRONT OF SCHOOL ALTAR

ATTENTION: RICHARD KOCH

17.10.91

AS DISCUSSED PER 'PHONE TODAY, WE HAVE TWO REQUESTS:

- ① A REVIEW OF THE SCHOOL BADGE/LOGO
 - SAMPLES ARE SHOWN ABOVE
 - THE "SQUIGGLE" LOOKS MORE LIKE A SNAKE, THAN THE WATER IT IS MEANT TO REPRESENT: PERHAPS SHOULD BE [OUR SCHOOL IS NEAR THE COAST] LIKE (B)
 - WE NEED SOMETHING MORE GOLD, THAN THE LETTERHEAD VERSION (A)
 - SUGGESTIONS ON COLOUR DISTRIBUTION / SIZE AND FONT FOR PRINTED LETTERS
- ② PRODUCTION OF PROSPECTUS FOLDERS - SAME SIZE AS FOR BETHANIA
 - 1000 COPIES. DIMENSIONS \uparrow
 - 223 \uparrow
 - 159 \uparrow
 - COVER DETAILS ON NEXT PAGE



FOLDED EDGE AND
BOTTOM TO HOLD
LOOSE SHEETS
OF A5 PAPER.





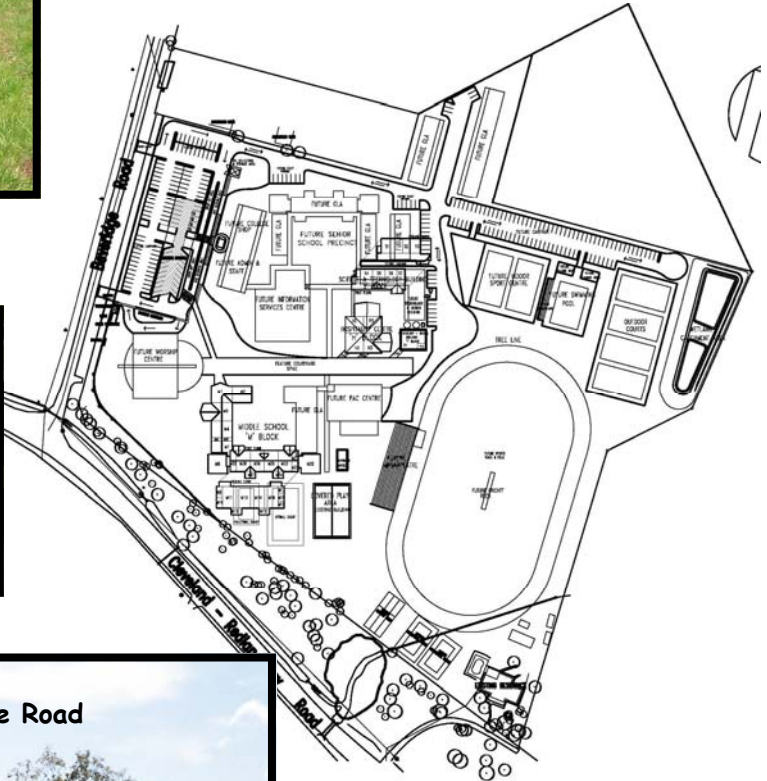
Beveridge Road - Day 1 18/3/2003



Hayshed - Beveridge Road



Tech Shed - Beveridge Road



Stage 1 Middle School - Beveridge Road



Beveridge Road Bus Shelter

Stage 2 - Hospitality Centre and fit out of Middle School building undercroft



Beveridge Road Carpark



Beveridge Road Hardcourt Area



Beveridge Road Wetlands

10/10/2006



Beveridge Road Senior School Science Building



Faith Lutheran Community Kindergarten



Link Road drive-through



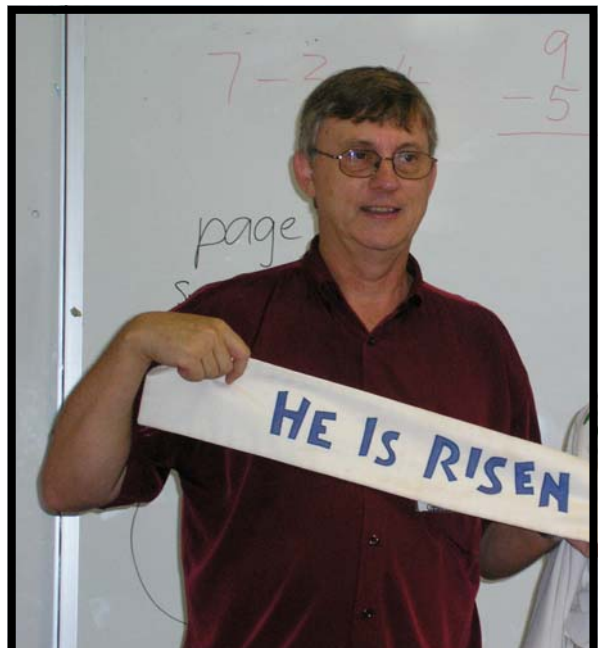
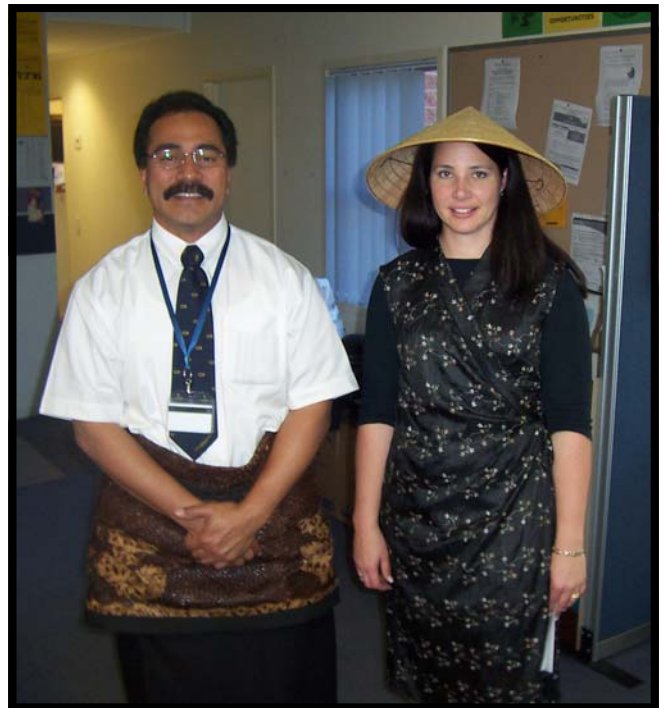
Stage 8 I block Link Road



Beveridge Road - Stage 4



The Big Shed Link Road



Principals' Reports 2001 - 2006

FAITH LUTHERAN PRIMARY SCHOOL, VICTORIA POINT PRINCIPAL'S SUMMARY REPORT – DECEMBER 2001

We give thanks to God for the blessings he has continued to pour on our school community at Faith Lutheran Primary School. When we understand how much we are given through God's love for us, it becomes possible to share our love and gifts with others in so many ways.

STUDENTS

The year began with 367 students from Preschool to Year 7. This was the first year of double streaming at Year 5 and we started to notice the impact of another 25 larger very active bodies around the school campus. At census in August we had 365 students and we finished the year with 367.

The significance of a year in the life of a child becomes very evident when teachers meet their new class for the next year at swap day early in December. They hand on a group that has learned the expected routines and absorbed all manner of development of their whole person and meet the challenges for the year ahead. The freshness and excitement the children have for their learning experiences is the inspiration for teachers. Our children are caring, loving groups of young people. They are God's gift to us as parents, teachers and school community. We have a mighty privilege and a challenging responsibility to meet their needs as learners.

A Principal has the privilege of reading all the student reports at the end of the Semester. From this, I can tell you that each child has achieved significantly in the past ten months and they all have the potential for this to continue in the future. Let us give them our wholehearted support and encouragement.

We try to keep you informed of children's particular achievements in academic, sporting, service and community involvement during the year through the information which is published in the weekly Newsletter. Weekly 'parade' time on Monday morning is a treasured spot in the week when the children hear about the achievements of each other across the spectrum of school life. They are interested in and generous in their accolades for their peers and the older and younger students.

This year we have separated the awards presentation of the end of year activities and the Closing Worship. Your feedback on this trial will be appreciated.

STAFF

Twenty-six teachers have been involved in the learning program throughout the year. Additions to the staff in 2001 were Greg Tagney, Helena Jenner, Chris Wall, Katrina Bowkett, Chris Lees, Annette Enchelmaier, Tracey Underhill and Lois Pfitzner. Judy Butler, Deonne Whyte, Geoff Logan and Daniel Hausler have also been part of the staff for varying lengths of contract to replace teachers on leave.

I cannot stress enough how fortunate Faith school is to be blessed by such a dedicated group of teachers. The effort and involvement in their desire to give the students a comprehensive and rich range of learning experiences is amazing. Their love for the children is so evident. Their commitment to the mission of Faith School and in particular, their own Christian faith commitment is what engenders the harmony and care we enjoy in this community.

I extend my sincere thanks and appreciation to each of the teaching staff. An understanding of their value in working with the children and families, with each other, with support staff and administration can never be fully known in the short term. I thank God for this blessing of the teachers in our school.

Judy Butler (study), Kate Kruger (exchange to Canada), Elizabeth Lohse (interstate) and Lois Pfitzner (interstate) depart at the end of the year. Manta Schneider who took maternity leave earlier in the year has also resigned from the staff. We wish God's richest blessings on each of these people as they depart from our community.

Our band of support and administration staff are a quiet but very effective group in making sure that the wheels keep turning in the school. Their behind the scenes dedication and input is often known in its entirety only by their immediate fellow staff members. Della Kriis, Sue Day, Jane Dyball and Leanne Lane have been additions to the staff in 2001. Leonie Fartch and Nate O'Donnell left us earlier in the year.

We thank each of these people for their caring commitment to Faith School and for their dedication to the role that they have in our school. We thank God for giving them the abilities to be such worthy support to the educational purpose of our community.

The Outside School Hours Care service, visiting instrumental teachers, and other programs bring additional personnel into our community. We thank each of these people for their contribution to the lives of the children and families.

DEVELOPMENTS

2001 has seen the following particular developments in buildings and grounds.

- the classroom block for Year 7, Music and Multipurpose
- the Preschool playground
- repainting the Chapel
- additional fans in the classrooms

There are plans afoot for additional works in the holidays and these will be acknowledged in time. Each aspect of improvement and addition to our school property is motivated by the desire to enhance the facilities for students. We thank the people who are instrumental in ensuring that these become realities.

SPIRITUAL AND WORSHIP LIFE

Classroom Christian studies lessons and integrated activities, daily devotions, weekly worship times, staff study and visiting groups are vital in our program of bringing Jesus into the lives of our children. We are every grateful and very thankful for the blessing of Pastor Maurie Richter and his interest, support and presence in our school community.

The Redlands Parish conducted a series of Sunday evenings at the school in the earlier part of the year for people participating in the Alpha course. These were times of fellowship and learning more about our Christian faith and a valued experience for participants.

In the Second semester year level groups from the school took turns to host a Sunday evening worship time. This provided an opportunity for families to share a worship experience with their children and enjoy a time of fellowship with each other.

Our step to hold Closing Service at the Redeemer College Chapel is a new direction. We pray that it will be a time for joy and thanksgiving for the many blessings of 2001.

CURRICULUM

We have continued to work through and keep developing learning programs in line with the current outcomes based approach to education. Teachers have attended a range of professional development activities in catering for the needs of individual student learners, shared their experiences and put them into practice.

OUR COMMUNITY

School Council is a vital part of our community. It is a group of people who nominate for and accept the responsibility for the governance of our school. People who give time for Council meetings on a monthly basis and a host of other sub-committee meetings. People who are responsible for the vision, policies and long term planning of the school. The commitment of the volunteers who take on the role as a member of School Council is a significant undertaking.

Our School Community and our Parish are deeply appreciative and give thanks to all those who serve on School Council and associated sub-committees. We give thanks to God for their willingness to give the time and input into this vital role in the school community.

The Parents and Friends Association and its linked services in the school – the Tuckshop and Uniform Shop, the Craft group and TLC group are another group of people who make regular time commitments to particular activities in the school. Through a highly successful Funfest and the other fund raising ventures these parents enterprises provide particular resources for the school. The PFA report to their Annual General Meetings will give you the details. We thank the hard working committee members, those who accept particular organising responsibilities and all volunteers who give countless hours in these ways. You are very much appreciated.

Class parents, Classroom volunteers, Support-a-reader parents, Working Bee helpers and those who assist on special days such as Swimming & Athletics Carnivals, Tri-nations Day, Class Excursions and the list goes on. Your input is so important to building our community. We thank you all and pray that you receive joy in giving you time to school activities.

There are a number of families who will leave our community at the end of the year. Amongst these are people who have given selfless service over many years as their children progressed through the school. To these families who will no longer be with us because their youngest child is graduating from Year 7 this year we have a special thanks for your long term commitment to Faith Lutheran Primary School. May God bless all of you who are leaving Faith at this time.

FUTURE

Waiting for a decision on our second application for approval to extend to Secondary is a major frustration. Thinking and planning have continued never-the-less in an optimistic endeavour to be ready for the continuing stages of a positive outcome.

Staffing for 2002 will see the return of Ross Bird to Year 6, and new to the school are Rebecca Rossmann (Preschool) and Deonne Whyte (Year 4). The Principal appointment will be made in due course.

As mentioned in the last Newsletter, the school is in good hands with its staff and Council and you can be confident the children are receiving a quality education.

PERSONAL THANKS

It has been my privilege to serve the Faith Lutheran Primary School community as Principal in 2001. I thank all of you for the welcome, friendship and support that you have given me. My year in the Redlands will hold many treasured memories.

I thank the School Council for their support and guidance, Pastor Maurie for his pastoral care and the whole staff and student body. To Mrs Deb Osland, Ms Della Kriis, Mrs Jan Fawke and Mr Jim Sharp I give special acknowledgement and thanks for easing me into the role and helping in so many ways.

I give thanks to God for the strength, comfort and leading that he gives to me at all times and the blessing that this year has been.

My prayer for Faith Lutheran Primary School is that it continues to be the caring community of this time and that the love that God has given us can be the love that continues to be shared in this community. May God bring us all a continued deepening of the understanding of the salvation and eternal life available to us through the gift of Jesus Christ. Whatever the direction of the future, put your trust in the one who gives you strength.

I wish you all a joyful Christmas and a New Year of health and happiness.
Lois Pfitzner.



Faith Lutheran College, Redlands

Faith in Christ ... prepared for life.

Mission Statement

Faith Lutheran College is committed to providing quality learning opportunities while nurturing the development of all students in a Christ centred community.

Principal's Report to Redlands Parish AGM 2-3-2003

The last 18 months have been most significant year in the life of Faith Victoria Point. Many changes had to be made as the Primary School became a College in preparation for the addition of the first Year 8 class in 2003 and the subsequent development to Year 12 by 2007. Major initiatives included:

1. Representation was made to Lutheran Education Queensland (LEQ) for approval to extend to secondary school. Approval was given.
2. The Redlands Lutheran Parish passed a resolution at the Parish AGM officially handing ownership of Faith over to LCA QD.
3. At LCA QD synod in 2003 Faith was officially adopted into the LCA QD Constitution By-Laws and the change of name occurred to Faith Lutheran College Redlands.
4. Accreditation for Secondary Schooling from the Department of Non-State Schooling was applied for.
5. In June, The Faith Lutheran Primary School Council was dissolved, and in its place Faith Lutheran College Redlands, College Council was constituted under the LCA QD Constitution and By-Laws.

6. The College reviewed its mission and adopted a modified mission statement (printed above) as well as adopting "Faith in Christ ... prepared for life" as the College motto.

Staff

1. Significant changes in regard to staffing during the Year include:
 - 1.1. Coordinators for Preschool to Year 3 and Year 4-7
 - 1.2. Additional teacher aides with duties allocated to the number of students with disabilities.
 - 1.3. A staffing structure for the sub-schools developed.
 - 1.4. A complete review of the Business Office with appointments to be made as this needs to develop with the College.

Students and Enrolments

1. Enrolments for 2002 peaked at 395 during term 4.
2. Sufficient interest was shown in the Preschool for a third stream of Preschool students to be enrolled for 2003.
3. Total enrolment for the College for 2003 is 471 with 71 students in Preschool and 24 in the first Year 8 class.
4. Students at the College continue to achieve well in all areas, with the College students achieving above average in Queensland Literacy and Numeracy testing taken at Year 3, 5 and 7.

Strategic Plan.

1. College Council initiated development of the Strategic Plan looking at the development of the College in the shorter term (5 years) and the longer term (10 year). This will be a fluid document that will undergo periodic (6 monthly) review and development. This strategic plan includes all the major strategic issues in the development of the College including Mission, Ministry, Curriculum, Building Development, Marketing, Staffing, Finance, Information Technology, and Co-Curricular Programs.
2. Master-planning of Beveridge Road was developed as part of the Development Application Process.
3. Master-planning of the Link Road Campus which will include facilities for triple streaming and include the space for a Childcare Kindergarten facility, will be undertaken in 2003.
4. The College is examining the establishment of a Childcare Kindergarten on the Link Road Campus.

Beveridge Road Development.

1. The Development Application process through Redland Shire Council has taken the best part of 12 months to complete. There is a long list of conditions that the College must meet in developing the campus on that site, but a negotiated decision finally passed through all the necessary approval and appeals process on February 13th 2003
2. Beveridge Road Stage 1 commenced in March with a completion date in August. The cost of Stage 1 will be \$2.6
3. In 2003 Faith has placed an application for Capital Funding from the State and Federal governments for the next building of 3 classrooms on Link Road, a Food Technology building, 4 classrooms and undercover play area at Beveridge Road. This would be built 2004 for 2005.

Link Road Development

1. A third Preschool classroom was completed in 2002 for 2003. The cost was approximately \$300,000. The unique nature of the Preschool buildings, the need to continue that style of building, the higher ceiling and roof-lines together with the special requirements of a Preschool room contributed to the high cost.
2. Grounds development continues at Link Road to ensure a high quality educational environment continues to be provided for the students.

God richly blessed Faith through 2003 as we set out on the major developmental path. God blessed us with an enthusiastic and visionary College Council, a hard working and dedicated staff, a most supportive parent body and community in the Lutheran Parish.

I look forward to the developments of Faith Lutheran College, Redlands and pray God's guidance and wisdom on our College as we step forward, all the while keeping our true purpose and mission firmly in front of us, leading our decisions and lighting our path.

Anthony Mueller Principal 17-2-03



Faith Lutheran College, Redlands

Faith in Christ ... prepared for life.

Mission Statement

Faith Lutheran College is committed to providing quality learning opportunities while nurturing the development of all students in a Christ centred community.

Principal's Report to Redlands Parish AGM Feb 2004

The developments at Faith during 2003 have been the most significant since its beginning in 1982. Four major developments occurred.

- The development into Secondary Schooling commenced with the first class of Year 8 students.
- Secondly, schooling started on the new Beveridge Road campus.
- Thirdly, the College commenced the development in 3 schools: Junior School (Preschool to Year 6), Middle School (Year 7-9) and Senior School (Year 10-12), to commence in 2005.
- Fourthly, triple steaming commenced in the Junior School with the first cohort of 3 classes at one year level in the Preschool. This will now work its way through until we have 3 classes at each year level from Preschool to Year 6.

Students and Enrolments

1. Enrolment at 2003 census in August was 472 (This is an increase of 77 from the 395 in 2002). This enrolment included:
 - The third Preschool class filled well with a total of 75 students in that cohort.
 - The Year 8 class commenced with 25 students in that class.
2. Anticipated enrolment for 2004 will approach 560, with 3 classes in Preschool and Year 1, two classes for each Year level from Year 2 to Year 8, and one class in Year 9.
3. Students at the College continued to achieve well in all areas, with the College students achieving above average in Queensland Literacy and Numeracy testing taken at Year 3, 5 and 7.
4. A continuing pattern of student leadership is developing, along the school lines with leaders at each school, primarily at Year 6 and Year 9. Other leadership positions at different year levels have been created to enhance this program.
5. The co-curricular program at Faith is in its infancy, but we are pleased by the success of our initial phases of the instrumental music program, clubs such as Chess Club, Tournaments of the Minds competitions and our first forays in to the sports arenas at the secondary level. The Junior School continues to operate strongly in the co-curricular area.

Staff

Significant changes in regard to staffing during the Year include:

1. Senior Administration: Mr Colin Sutcliffe commenced as Head of Junior School, Mr Moses Faleafa was appointed Business Manager and Mrs Deb Osland was appointed to the position of Head of Middle School. These staff members together with the Principal comprise the Senior Administration Team of the College. In 2004 a Head of Senior School will be appointed to commence in 2005 to complete this team at the College.
2. There were many additions to the staff at Faith in 2003. Most of these staff additions have been put in place to assist the infrastructure and establish a foundation on which our College will continue to develop. The staffing additions included:
 - Additional Teaching staff and Teacher Assistants to service the extra classes
 - The appointment of a full time Information and Communication Systems Officer.
 - An additional Groundsman, primarily with responsibility for the development of the Beveridge Road campus and a trainee groundsman commenced as well.
 - An Accountant for the Business office.
 - A Uniform Shop Manager and Tuckshop Convenor.
 - An increase in Support Education Teacher time allocation and additional Teacher Assistant time with duties allocated to the number of students with learning difficulties and disabilities.

Regular breakfast meetings occur between the Heads of Schools, local Lutheran Pastor (Maurie Richter) and Principal to discuss the ministry aspects of the College.

We are blessed at the College to have a very dedicated and caring Christian staff. The additional staff members added to commence the Middle School and the other staff appointed during the year have continued this mould. I thank staff for their conscientious work and efforts during 2003. This was not always easy as the Middle School shared facilities with the Junior School for 3 terms. Thanks to them all for their efforts.

Strategic Plan.

1. College Council reviewed the College 5 year strategic plan in Term 2. The review of the strategic plan will be an annual occurrence during this time of rapid development. This strategic plan includes all the major strategic issues in the development of the College including Mission, Ministry, Curriculum, Building Development, Marketing, Staffing, Finance, Information Technology, and Co-Curricular Programs.
2. The master-plan of Beveridge Road was reviewed and refined.
3. Master-planning of the Link Road Campus which will include facilities for triple streaming and include the space for a Childcare Kindergarten facility, was undertaken in 2003.
4. The College continues to examine the establishment of a Childcare Kindergarten on the Link Road Campus.
5. A major part of the Strategic Plan is the development of the Christian Mission and Ministry (CMM). A draft document outlining the vision, context team ministry and staffing aspects of CMM is currently being disseminated to sections of the Faith community for consultation and feedback.

College Building and Grounds Development.

1. The Stage 1 Buildings have been completed at a cost of \$2.9m. This is far in excess of original estimates and is due to:
 - Significant building cost increases due to the buoyant nature of the industry at the present time.
 - Increased development conditions from local and state government authorities
 - The inclusion of further items in the project now deemed necessary for security reasons which includes fencing the entire road frontage.

Government capital funding totalling \$878,022 was granted to the College for this stage. Year 7 and 8 students occupied the buildings from day one of Term 3 October 6 2003. The Official Stage One opening is to be held Sunday February 8th 2004.

The end result is an excellent Stage 1 facility from which the development can now continue.

2. 2004 Building projects, estimated to cost \$2.2m will be:
 - Stage 8 Link Road: 4 General Learning Classrooms
 - Stage 2 Beveridge Road which will include, specialist classrooms for Food Technology and 6 more General Learning Areas and undercover play area.
 - Government capital funding totalling \$690,000 has been allocated to these buildings.
 - It is also planned to continue to develop the Beveridge Road grounds as finances allow.
3. In 2004 we will apply for further capital grants to building 4 classrooms on Beveridge Road in 2005 for 2006.

Faith Lutheran College Redlands Foundation

During 2003 our Faith College Foundation was established and registered. The foundation will take over the operation of the Uniform Shop from January 2004 and also begin to establish other business ventures to support the College.

In my 2002 report I wrote "God richly blessed Faith through 2002 as we set out on the major developmental path. God blessed us with an enthusiastic and visionary College Council, a hard working and dedicated staff, a most supportive parent body and community in the Lutheran Parish." This was duplicated through 2003 and I thank and praise God for this.

May God continue to direct and guide us.

In His service

Anthony Mueller Principal 2-2-04



Faith Lutheran College, Redlands

Faith in Christ ... prepared for life.

Mission Statement

Faith Lutheran College is committed to providing quality learning opportunities while nurturing the development of all students in a Christ centred community.

Principal's Report to Redlands Parish AGM Feb 2005

The developments at Faith during 2004 continued in their significance and their speed. We have been truly blessed with the way the Lord has allowed our College to flourish and grow.

Strategic Plan As is necessary with a College in such a phase of great development the community completed its third major review of the strategic plan in as many years. It is expected that this strategic plan will have a life of three years (2005-2007) with the next major review occurring in 2007. The contents of the strategic plan will form the basis for this report. The major aims of the College in this three year period as outlined in the strategic plan are:

1. Commence effective implementation of the Vision for Christian Mission and Ministry.
2. Improved student outcomes through attention to effective teaching and engaged learning strategies. More specifically:
 - 2.1. The development and implementation of Whole College Literacy Strategy (SAISO)
 - 2.2. Review and development of effective student tracking and monitoring, assessment and reporting systems into the College which includes investigation, sourcing and installation of appropriate software package.
 - 2.3. Full adoption and implementation of the P-10 QSA syllabuses
 - 2.4. The development of the year 10 program as a transition to Year 11 and 12.
 - 2.5. The implementation of the year 11, 12 Senior School program.
 - 2.6. Implementation of the LEA Christian Studies Outcomes Framework.
3. The development of the co-curricular program towards our evolving vision.
4. The planned and strategic development of the facilities to meet the strategic objectives, which includes development of both campuses and refurbishment under a planned schedule.
5. The continued development of ICTs as outlined in the strategic plan aligned with the effective teaching and learning objectives in goal 2.

1. Students

The student enrolment as at the August 2004 census was 555 students in Preschool to Year 9. This is an increase of 83 from 2003 number of 472. The expected enrolment in 2005 is approximately 680 students Preschool to year 10, which is an increase of 125 students from 2004. Indications are that this growth pattern will be maintained.

2. Staff

Our first Head of Middle School (Deb Osland) commenced in 2004 as well the significant increase in teaching staff to deliver the curriculum. A significant increase in support staff in areas such as the business office and in grounds and maintenance has also been necessary to provide the support and infrastructure for such a growing College. Total staff numbers in 2004 was 59.

3. Policy

During 2004 the College successfully completed the Accreditation process as determined by the Non-State School Accreditation Board of the Queensland Government. This must be completed every five years. All areas of the College including policy and procedures, grounds and facilities, staffing levels and financial viability were examined to ensure compliance.

Much work has been completed in the College to ensure all of the necessary policies are in place and current. The successful results and feedback from this process were a great endorsement for Faith.

4. Curriculum

Development continued in many areas including:

- Year 9 curriculum and preparation for Year 10.
- Prep Year
- Mathematics
- Commencement of work towards a whole College Literacy plan in a specially funded project.
- The continued development and refinement of Whole School curriculum plans in each of the Key Learning Areas.

5. Finance

The College continued to monitor closely its financial performance, so crucial during these years of rapid development. 10 year financial projections were developed and audited by independent assessors to be a road map for our development alongside the strategic plan. The College financial position has followed the projected path for 2004 and even performed better than expected which allowed the development of the Beveridge Road playing fields and the Technology and Design Workshop ahead of the strategic plan schedule. This is a very pleasing financial situation.

6. Buildings

During the year many buildings were completed: more than at any other time during the history of Faith. These were:

- Link Road 4 classroom block, associated offices, computer pods, storerooms and music tuition rooms.*
- Beveridge Road
 - 4 Classroom block with associated computer pods*
 - Covered play area, (The Hayshed) suitable for basketball, netball, volleyball and many other uses.*
 - Technology and Design Workshop
 - Hospitality Centre: including commercial kitchen, art room, classroom and temporary offices for Senior School Administration and College Pastor.*

*These buildings were supported by Federal and State Capital grants of \$610,000, with the total cost of these developments being \$3.1m

A plan to air-condition all classrooms at Link Road was initiated, with air-conditioning being installed in a block each year until complete. As at the beginning of 2005, 5 of the 8 classroom blocks on Link Road are air-conditioned. All new buildings built since 2003 are air-conditioned as practicable.

7. Grounds

The Beveridge Road playing fields were developed during the year at an approximate cost of \$70,000 including fill and shaping, irrigation, and grassing. This is a great saving against the usual costs as approximately 10,000m³ of fill and topsoil were donated, delivered to the College from major developments currently occurring in the Victoria Point area.

The College is currently going through the process of purchasing another 1.7 hectares of land from the Redlands Fellowship adjacent to the rear of the Beveridge Road campus.

The College had to also initiate major road widening, footpath and services extension at the Beveridge Road campus as part of the conditions of development placed on the site by the Redlands Shire Council.

8. Christian Life and Pastoral Care.

Significant work was completed in this area towards our Vision for Christian Mission and Ministry (CMM); much of it preparation work, for the years ahead.

This preparation work enabled us to call a College Pastor at the end of 2004 to take up his position at the beginning of 2005. Much work was done with the local congregation to prepare for the commencement of Sunday morning worship on the Beveridge Road campus from the beginning of 2005. The local parish

continues to support the College and the vision is to create even stronger links and working relationships between to two bodies, parish and College.

Many other activities continue in this area including: Youth group (FRED), prayer group, Faith shares Faith meeting group, ALPHA at the College Campus and much more.

This is a wonderfully exciting area of potential and work for our community.

9. Co-curricular

Developments in this area continued with all areas including music drama, sport, and other cultural and intellectual pursuits such as debating, public speaking, and chess having high levels of participation.

10. Marketing

Promotions for LLL earmarks and enrolment marketing were the main areas for activity in this area. A marketing committee will continue their work and development in this field. A greatly enhanced and polished edition of the Faith magazine "Focus" is another example of the way the College is developing various strategies to market itself.

11. Information and Communication Technologies (ICT)

The Junior and Middle School made significant progress in these areas during 2004. The ICT support staff have combined with the teaching staff to provide very good computing facilities for the students. Examples of the fine achievements in this area were the "ICT Expos" conducted at the Junior School and Middle School, showcasing the students work to parents, grandparents and visitors.

12. General

- The College also conducted a "Benchmarking" exercise through Lutheran Education Queensland during the year. In a type of "health check", students, staff, College council and parents were surveyed to gain their opinion on all matters relating to the College including curriculum, relationships, facilities, and administration. For a College in the midst of such major developments the results were very supportive, affirming and positive. The survey also identified areas for development within the College. In 4/5 years the process will be completed again and we will be in a position to compare results and act further to attend to any areas identified.
- A Principal's appraisal was also completed during 2004. Nearly 100 parents, staff, students, College Council members and community identities completed surveys on the performance of the Principal. The results were very positive and affirmed again the directions the College is currently taking.

In submitting this report I again acknowledge the support of the enthusiastic and visionary College Council, a hard working and dedicated staff, and, a most supportive parent body and community in the Lutheran Parish. I thank and praise God for this and for His guidance and blessing and pray for this to continue.

In His service

Anthony Mueller

Principal



Faith Lutheran College, Redlands

Faith in Christ ... prepared for life.

Mission Statement

Faith Lutheran College is committed to providing quality learning opportunities while nurturing the development of all students in a Christ centred community.

Principal's Report to Redlands Parish AGM 2006

2005 saw the continued development in line with our strategic plan and directions. Perhaps more than other years, the development has now gained momentum with the added infrastructure and staffing now in place, so Faith can more smoothly cater for the developments introduced each New Year.

1. Students

The student enrolment as at the August 2005 census was 676 students in Preschool to Year 10. This is an increase of 121 from 2004 number of 555.

2. Staff

In 2005 Faith commenced operation in the Senior School with its first Year 10 class. Mr Duncan Ware was appointed Head of Senior School to develop this area of the College. For the commencement of Senior Studies in Year 11 and 12 Curriculum Leadership roles (Curriculum Team Coordinators) were created during the year, and are in place for 2006. 2005 also saw the appointment of a College Pastor at Faith.

3. Policy

Policy development continues at Faith, as legislative requirements and as our development into Senior School dictates.

4. Curriculum

Development continued in many areas including:

- The commencement of development of Senior Work programs (Year 11 and 12)
- Trialling of the new Lutheran Christian Studies Curriculum Framework
- The development of a Whole College Literacy Strategy.

5. Finance

During these years of development, there are extreme financial pressures upon the College. In 2005 it was an excellent result that Faith, was able to maintain its position according to our financial forecasts and fund the initiatives as planned on the Strategic Plan.

6. Buildings

During the year further buildings were completed: These were:

- Students Amenities Block, Link Road
- Science Block, 5 classrooms, storage and teacher offices at Beveridge Road

These buildings were supported by Federal and State Capital grants

A plan to air-condition all classrooms at Link Road continued (a classroom block each year) until complete. As at the beginning of 2006, 5 of the 8 classroom blocks on Link Road are air-conditioned.

7. Grounds

The College purchased another 1.7 hectares of land from the Redlands Fellowship adjacent to the rear of the Beveridge Road Campus. Of this, 2200m² of the land will be able to be used for development and the remainder will be land is an "Environment Protection Area".

The construction of a drive-through area at the front of Link Road was negotiated with Redland Shire Council and completed. This effectively freed up over 1000m² of land on the Link Road campus because the former drive-through was no longer needed. While Faith met the cost of the drive-through development it was actually equivalent to paying one third of the current market value price for that amount of land in the area. Faith is using this area to develop a Lutheran Kindergarten catering for 3 ½ to 4 ½ year olds prior to commencing Preschool /Prep Year at the Junior School. The Kindergarten, (Faith Lutheran Community Kindergarten) will be managed by Queensland Lutheran Early Childhood Services (QLECS).

A second playground equipment area for Year 3-6 students and hard courts on both campuses were installed thanks to the great support of the Parents and Friends Association.

8. Christian Life and Pastoral Care.

The ministry areas were strengthened through the installation of a Pastor at Faith.

Sunday morning Worship was trialled at the College, with very encouraging results and an average attendance of 70 people. It is envisaged that this will continue and develop.

9. Co-curricular

Developments in this area continued with a large number of sport, cultural, extension and community service activities being offered at Faith.

The Lord's hand of guidance and blessing has again been in evidence at Faith during 2005 and we pray for a continuation of this in 2006.

In His service

Anthony Mueller
Principal



Faith Lutheran College, Redlands

Faith in Christ ... prepared for life.

Mission Statement:

Faith Lutheran College is committed to providing quality learning opportunities while nurturing the development of all students in a Christ centred community.

Report to Redlands Lutheran Church AGM Feb 2007

1. Students

The student enrolment as at the August 2006 census was 785 students in Preschool to Year 11. This is an increase of 119 from 2005 number of 676.

2. Staff

In 2006 Faith moved to having its first Year 11 student cohort. Along with this a number of Curriculum Leadership positions were created to oversee those curriculum areas. We are blessed with a highly committed Christian staff which is a blessing to our Community.

3. Policy

During 2006 Faith gained accreditation as a Registered Training Organisation for the delivery of Vocational Education courses. Policy updating continues in all areas as required by legislation.

4. Curriculum

Development continued in many areas including preparation for the introduction for the Prep Year, the development of Senior Work programs (Year 11 and 12), the preparation for Year 12 in 2007, and continued development of a seamless and sequential program for students P-12.

5. Finance

Again the financial performance of the College was very sound. Financial forecasts are being met and good standards in facilities and staffing are being put in place to meet the needs of the students.

6. Buildings

During the year further buildings were completed: These included:

- 8 General Learning Areas, staff rooms and staff preparation areas on Beveridge Road. These buildings were supported by Federal and State Capital grants
- Sports store shed on Beveridge Road.
- The establishment of Faith Lutheran Community Kindergarten managed by Queensland Lutheran Early Childhood Services saw the completion of a building to house this on Link Road.

A plan to air-condition all classrooms at Link Road continued (a classroom block each year) until complete. As at the beginning of 2007

7 of the 8 classroom blocks on Link Road are air-conditioned.

7. Grounds

The grounds continued to develop well. We are developing high standard facilities at Faith and some local sporting bodies are hiring and using the grounds.

8. Christian Life and Pastoral Care.

The ministry and links with the local Lutheran Church continued. During 2006 we were fortunate to be able to gain the services of a volunteer Youth Ministry Coordinator. The College was able to expand the ministry activities for students in Years 9-12 in coordination with the Church run first communion and confirmation courses. Other programs including "Seasons, Grief and Loss" were also run as part of our ministry to students. The "Faith Celebration" Sunday morning worship group consolidated during this period.

9. Co-curricular

Developments in this area continued with a large number of sport, cultural, extension and community service activities being offered at Faith. The music program is certainly starting to grow and develop well.

In the last 6 months of 2006 a program called "Next Steps: committed to quality" was developed to guide our College directions in the next 3 years. The strategic priorities identified for action are:

- Renewal of the Mission of FLC,R
- Strategic initiatives that not only align with the Mission, unity and structural imperatives of a P-12 College, but actively assists the attainment of this goal, while eliminating the blockers to this end.
- A concurrent and coordinated focus emanating from this renewal is the focus on "quality learning" for all, from our mission, to lead to the development and adoption of shared understanding (vision) of what is an effective learning framework (ELF) applicable to all learning activities in the College.

A coordinated and aligned focus will be evident throughout our College this in year in these areas.

Faith has indeed been blessed once again in 2006. We thank God for this and pray for continued guidance and wisdom as Faith continues its exciting developments.

In His service

Anthony Mueller
Principal



Link Road Campus
Junior School and Faith Lutheran Community Kindergarten
132 Link Road, Victoria Point 25/7/2007



Beveridge Road Campus
Middle School and Senior School
1-15 Beveridge Road, Thornlands 25/7/2007

FAITH LUTHERAN COLLEGE, REDLANDS