

67955
Noritic Anorthosite
163 grams

revised

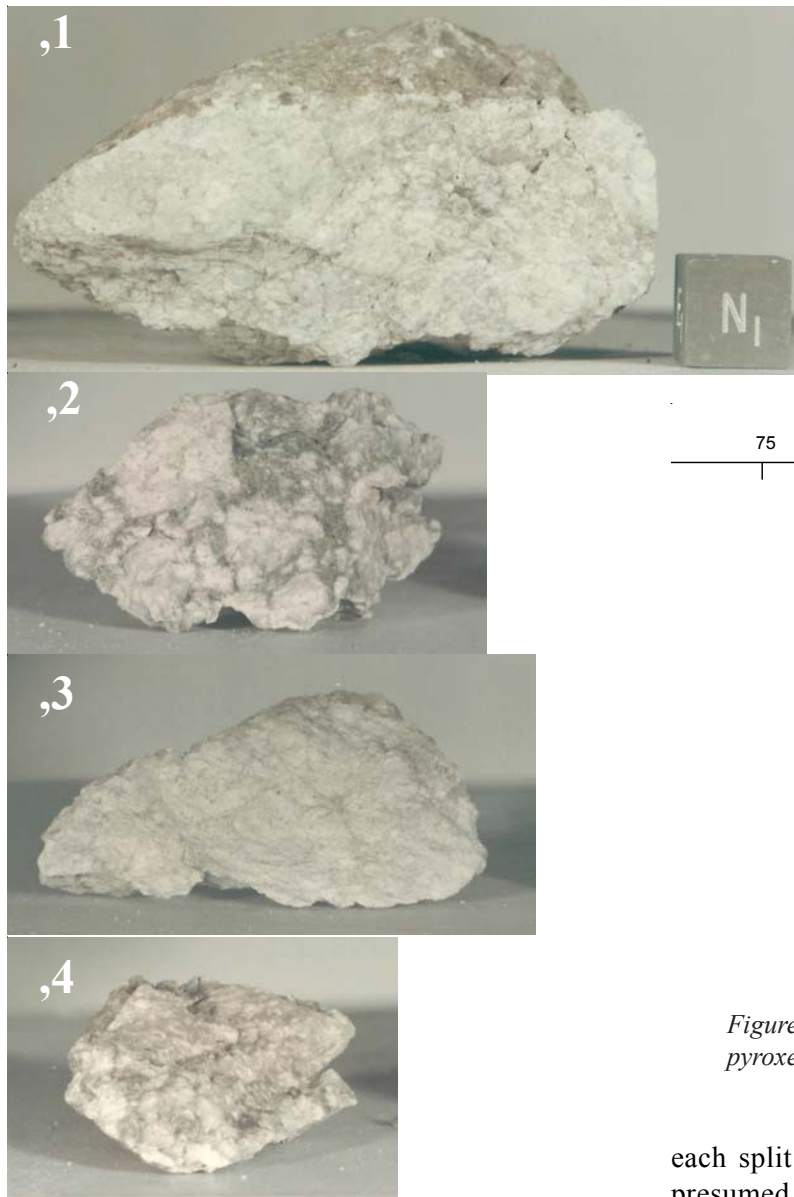


Figure 1: Four pieces of 67955. a) ,1. Cube is 1 cm. S72-45682; b) ,2. S72-37720; c) ,3. S72-37521; d) ,4. S72-37527. Not all to same scale.

Introduction

67955 was chipped from a large white clast in Outhouse Rock (figure 3). It was returned as several pieces and is friable (figure 1). The exterior surface has a thin brown patina with micrometeorite pits. It is brecciated and has thin black glass veins, but the mineralogy indicates it is a fragment of plutonic rock. However,

Mineralogical Mode for 67955

Hollister 1973	
Plagioclase:	78.5%
Pyroxene:	14.5%
Olivine:	6%
Opaques	1%
Metal	

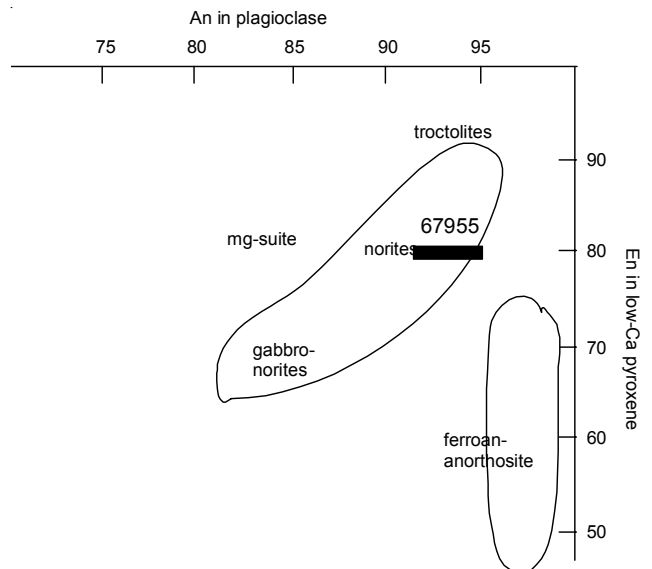


Figure 2: Chemical composition of plagioclase and pyroxene in 67955 (from Hollister 1973).

each split analysed has high Ni, Ir and Au and is presumed to have formed by crystallization of an impact melt sheet.

67955 has been dated at 4.2 b.y. with exposure to cosmic rays for ~ 50 m.y. (age of North Ray Crater).

Petrography

Hollister (1973), Ashwal (1975) and Nord et al. (1975) describe the white clast in 67955 as a brecciated noritic anorthosite made up of various clasts of coarse-grained noritic anorthosite (up to 1.5 cm) which grade to a matrix of finely comminuted mineral grains (figure 4). All mineral grains in the clasts and the matrix have



Figure 3: Photo of large spall zone around impact on Outhouse rock showing approximate location of 67955 and 67956. Note black glass splatter in photo. NASA AS16-106-17345. see also figures 17 and 79a in Ulrich et al. 1981

CDR Look at that shatter cone right there, Charlie. I'll be darned. It is, I'm sure.

LMP Put your tongs up there and I'll get a closeup.

LPM OK, here's a chunk of it. The black rock looks -- some of it is glass coated, Tony, and man, that is a shatter cone.

CDR Charlie, let's get a piece of it.

LMP OK, here you go. I got a piece. Give me a bag. On the next one how about stepping back and as I point to it, I'll

pull off another piece and we'll put a couple of pieces in here.

CDR OK.

LMP That's going in bag 389. OK, let's take a picture of that. So you'll know where it came from. It's badly shattered, Tony, so I don't know whether it's going to stay together or not.

CDR Get it, Charlie, I'll get the picture. That's right near the shatter cone.

LPM OK 5 samples in 389 Tony.

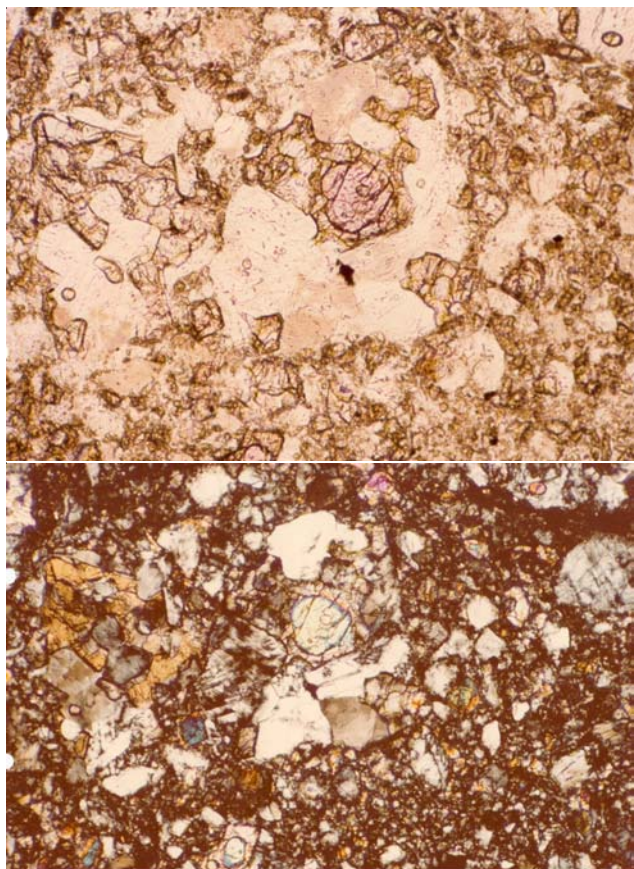


Figure 4: Photomicrographs of thin section 67955,55. Field of view is 1.4 mm. Top is plane-polarized light S79-27768; bottom is with crossed-nicols S79-27769. Note the pyroxene reaction rim on the olivine.

uniform composition, such that the matrix was formed by brecciation of the parent rock. The typical mineral assemblage in the clasts consists of a large single poikilitic pyroxene enclosing discrete grains of olivine and plagioclase. The surrounding pyroxene oikocryst is either Ca-rich or Ca-poor, but not exsolved (Hollister 1973). Cushing et al. (1999) calculate an equilibrium temperature of mafic minerals as 1112 deg C.

Petrographic descriptions of the recrystallized, brecciated texture of 67955 include terms like “poikiloblastic” (Ryder and Norman 1980), “granulitic impactite” (Warenr et al. 1977), and “hornfels” (Nord et al. 1975). Nord et al. (1975) concluded that 67955 was “not lithified by the North Ray Crater event” and Norman et al. (2007) concluded that 67955 formed from an impact melt with a significant component of meteoritic siderophiles (Ni, Ir and Au).

Dramatic clusters of intergrown, radiating opaque and anorthite (figure 6) and large blobs of metallic iron are

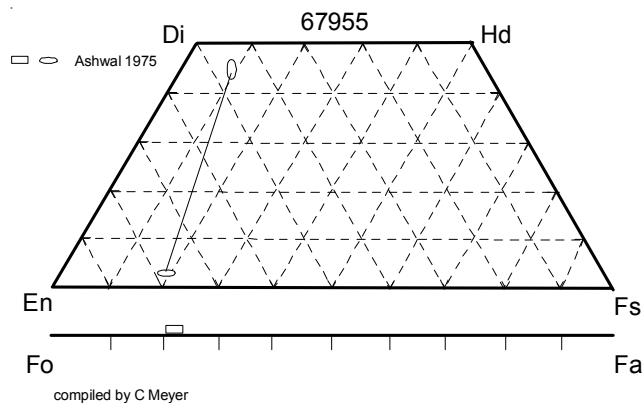


Figure 5: Composition of mafic minerals in 67955 (from Hollister 1973, Ashwal 1975).

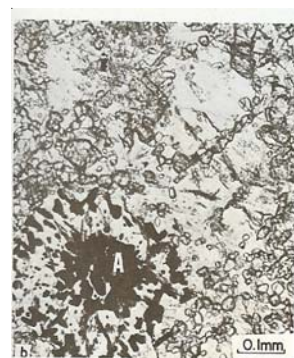


Figure 6: Thin section photo of fine-grained radiating oxide-anorthite complex in 67955 (Nord et al. 1975).

found in 67955. Hunter and Taylor (1981) report abundant “rust” and moderate schreibersite. Roedder and Weiblen (1977) studied the glass veins, finding them to be formed from the rock they cut.

Mineralogy

Olivine: Olivine occurs as rounded grains, sometime surrounded by pyroxene (figure 4).

Pyroxene: Hollister (1973) and Ashwal (1975) reported the pyroxene composition, with extremely low Ca in orthopyroxene and high Ca in augite indicating a high temperature of equilibrium (figure 5).

Plagioclase: Hollister (1973) reported the plagioclase in 67955 was $An_{92} - An_{95}$.

Ilmenite: Ashwal (1975) found the ilmenite was Mg rich.

Metal: Misra and Taylor (1975) found 10 % Ni, but no P in metal in 67955. Ashwal (1975) found metal

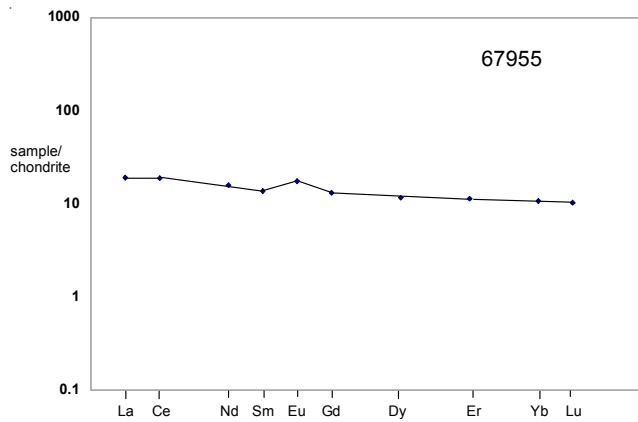


Figure 7: Normalized rare-earth-element diagram for 67955 (Hubbard et al. 1974).

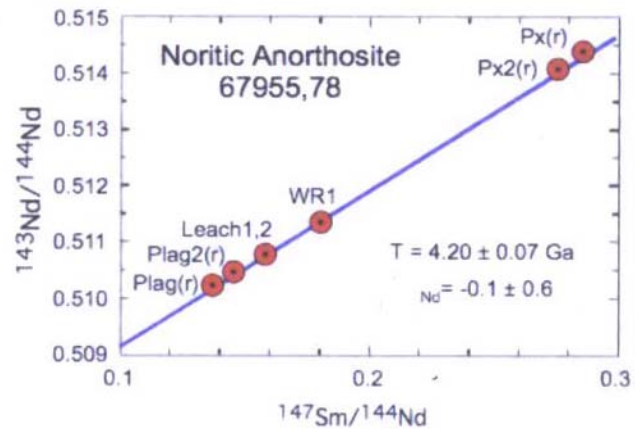


Figure 8: Sm/Nd isochron diagram for 67955 (Norman et al. 2007).

grains with ~6 % Ni, coexisting with metal grains of ~26 % Ni!

Chemistry

Hubbard et al. (1974), Lindstrom and Salpus (1981), Lindstrom and Lindstrom (1986), Boynton et al. (1976), Wasson et al. (1977) and Palme et al. (1978) determined the chemical composition of 67955 (table 1, figure 7). These splits were consistent with the values determined on the bulk samples by radiation counting. The relatively high Mg/Fe ratio of 67955 distinguishes it from ferroan anorthosites (figure 2). Ganapathy et al. (1974), Boynton et al. (1976) and Palme et al. (1978) found high Ir, Re, and Au and the sample is apparently not “pristine”.

Radiogenic age dating

Norman et al. (2007) reported a crystallisation age of 4.20 ± 0.07 b.y. determined a Sm/Nd internal mineral isochron (figure 8). They also reported disturbed Rb/Sr and Ar/Ar ages. Nyquist et al. (1974) reported Sr isotopes, while Oberli et al. (1979) reported U/Th/Pb.

Cosmogenic isotopes and exposure ages

Rancitelli et al. (1973) determined the cosmic-ray-induced activity of $^{22}\text{Na} = 37$ dpm/kg. and $^{26}\text{Al} = 125$ dpm/kg.

Drozd et al. (1974, 1977) found the exposure age of 67955 was ~ 50 m.y. – the age of North Ray Crater.

Processing

This sample has been chipped, not sawn, in order to obtain clean splits for analysis (figures 9 - 11).

Summary of Age Data for 67955

	Sm/Nd
Norman et al. 2007	4.20 ± 0.07 b.y.

Table 1. Chemical composition of 67955.

reference weight	LSPET73	Ganapa74	Hubbard74 Wiesmann75	Lindstrom81	Boynton76	Wasson77 ,35	Lindstrom86 74a 74b	Palme78Rancettelli73 43 118 g		
SiO2 %	45.01 (a)									
TiO2	0.27 (a)			0.29 (d)	0.34 (d)	0.32 (d)	0.3 (d)	0.28 (d)	0.28 (e)	
Al2O3	27.68 (a)			27 (d)	26.1 (d)	28.5 (d)	26.6 (d)	27 (d)	27 (e)	
FeO	3.84 (a)			4.28 (d)	4.37 (d)	4.46 (d)	4.5 (d)	4.14 (d)	4.14 (e)	
MnO	0.05 (a)			0.06 (d)	0.07 (d)	0.054 (d)		0.059 (d)	0.059 (e)	
MgO	7.69 (a)			8.9 (d)	6.8 (d)	8.3 (d)	7.4 (d)	8.12 (d)	8.12 (e)	
CaO	15.54 (a)			15.1 (d)	15.4 (d)	15 (d)	14.9 (d)	14.8 (d)	15.1 (d)	
Na2O	0.4 (a)		0.36	0.447 (d)	0.52 (d)	0.81 (d)	0.44 (d)	0.45 (d)	0.45 (d)	
K2O	0.05 (a)		0.053 (c)		0.055 (d)	0.064 (d)			0.041 (d)	0.099 (e)
P2O5	0.03 (a)								0.078 (d)	
S %	0.01 (a)									
sum										
Sc ppm				6.5 (d)	7.4 (d)	7.1 (d)	6.26 (d)	6.03 (d)	7.24 (d)	
V					26 (d)	25 (d)				
Cr	750 (a)		659 (c)	877 (d)	870 (d)	870 (d)	675 (d)	692 (d)	833 (d)	
Co				26 (d)	15 (d)	19.6 (d)	28.9 (d)	27.3 (d)	18.2 (d)	
Ni	108 (a)	231 (b)		220 (d)	185 (d)	170 (b)	346 (b)	328 (d)	170 (d)	
Cu									1.28 (d)	
Zn		6.7 (b)			5 (b)	7 (b)			8.16 (d)	
Ga					4 (b)	4.2 (b)			3.52 (d)	
Ge ppb		59 (b)			113 (b)	140 (b)				
As									21 (d)	
Se		26 (b)								
Rb	0.6 (a)	1.2 (b)	0.884 (c)						0.93 (d)	
Sr	170 (a)		169.1 (c)	195 (d)			205 (d)	198 (d)	168 (d)	
Y	16 (a)								17 (d)	
Zr	59 (a)		124 (c)				50 (d)		66 (d)	
Nb	4 (a)								6 (d)	
Mo										
Ru					16 (b)	12 (b)				
Rh										
Pd ppb										
Ag ppb		1.2 (b)								
Cd ppb		4.3 (b)			3.5 (b)	3.5 (b)				
In ppb					0.79 (b)	0.79 (b)				
Sn ppb										
Sb ppb		0.23 (b)								
Te ppb		9.7 (b)								
Cs ppm		0.064 (b)					0.075 (d)	0.078 (d)	0.07 (d)	
Ba			61.9 (c)	72 (d)	60 (d)	78 (d)	66 (d)	65 (d)	73.4 (d)	
La			4.45 (c)	4.72 (d)	5 (d)	5.3 (d)	3.82 (d)	3.97 (d)	5.02 (d)	
Ce			11.3 (c)	12.7 (d)	12 (d)	13 (d)	9.8 (d)	10 (d)	13.3 (d)	
Pr							5.9 (d)	6.1 (d)	1.72 (d)	
Nd			7.09 (c)			8 (d)			7.7 (d)	
Sm			2.02 (c)	2.12 (d)	2.2 (d)	2.1 (d)	1.79 (d)	1.83 (d)	2.08 (d)	
Eu			0.973 (c)	0.98 (d)	1.05 (d)	1.06 (d)	1.114 (d)	1.133 (d)	0.98 (d)	
Gd			2.57 (c)						2.7 (d)	
Tb				0.51 (d)	0.45 (d)	0.51 (d)	0.41 (d)	0.39 (d)	0.5 (d)	
Dy			2.81 (c)			2.6 (d)			3.33 (d)	
Ho									0.73 (d)	
Er			1.79 (c)						2.1 (d)	
Tm									0.3 (d)	
Yb			1.74 (c)	1.9 (d)	2.02 (d)	2 (d)	1.57 (d)	1.58 (d)	2.08 (d)	
Lu			0.25 (c)	0.28 (d)	0.28 (d)	0.28 (d)	0.24 (d)	0.237 (d)	0.27 (d)	
Hf			3.1 (c)	1.8 (d)	1.7 (d)	1.6 (d)	1.59 (d)	1.48 (d)	1.79 (d)	
Ta				0.3 (d)	0.21 (d)	0.24 (d)	0.28 (d)	0.26 (d)	0.25 (d)	
W ppb									120 (d)	
Re ppb		0.572 (b)								
Os ppb										
Ir ppb		5.56 (b)			7.2 (b)	8 (b)	11 (b)	10 (d)	6.8 (d)	
Pt ppb										
Au ppb		1.6 (b)			2 (b)	2.2 (b)			2 (d)	
Th ppm	1.9 (a)		1.03 (c)	1.12 (d)	0.97 (d)	1.08 (d)	0.92 (d)	0.91 (d)	0.84 (d)	0.98 (e)
U ppm		0.36 (b)	0.38 (c)	0.34 (d)	0.32 (d)	0.33 (d)	0.22 (d)	0.23 (d)	0.26 (d)	0.29 (e)

technique: (a) XRF, (b) RNAA, (c) IDMS, (d) INAA, (e) mixed, (f) radiation counting

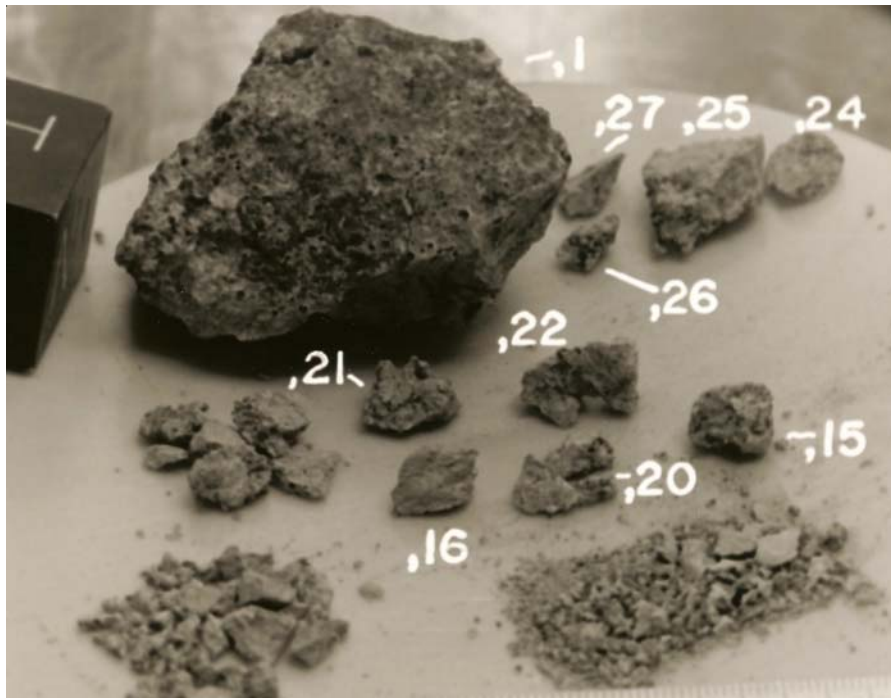


Figure 9: Initial processing of 67955,1 Cube is 1 inch. S73-22428.



Figure 10: Photo of 67955,1 prior to second round of sampling. Cube is 1 inch. S92-33078.

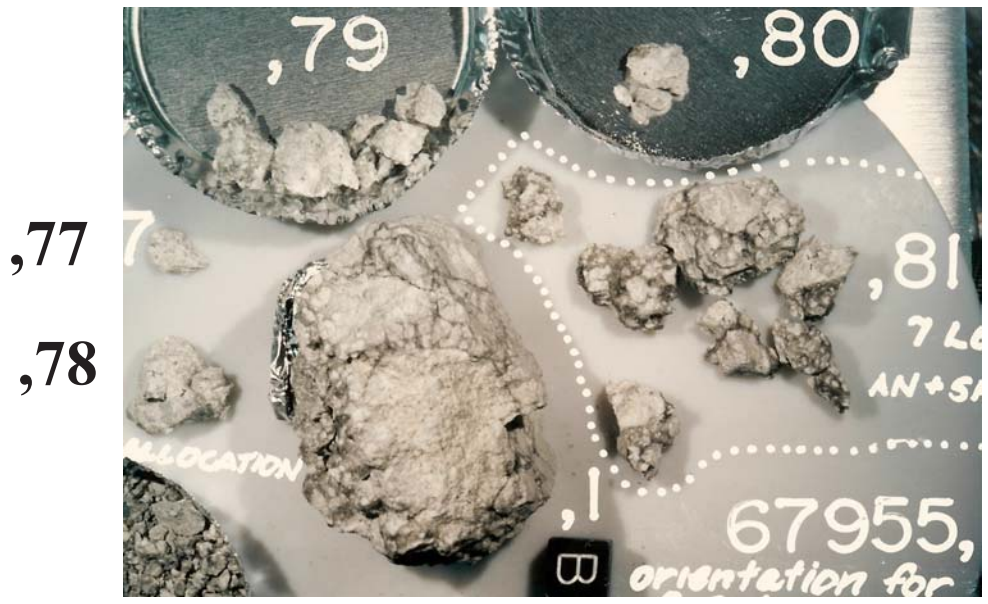
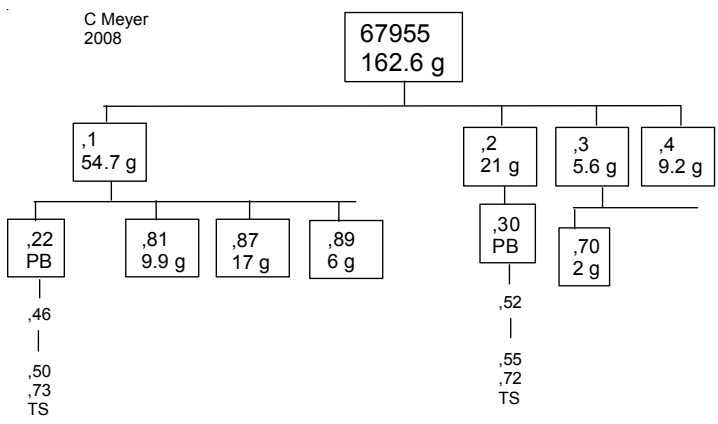


Figure 11: Processing photo for sampling 67955,1 in 1992. Cube is 1 cm. S92-32811.



References for 67955

- Ashwal L.D. (1975) Petrologic evidence for a plutonic igneous origin of anorthositic norite clasts in 67955 and 77017. Proc. 6th Lunar Sci. Conf. 221-230.
- Boynton W.V., Chou C.-L., Robinson Karen Lee, Warren Pablo H. and Wasson J.T. (1976) Lithophiles, siderophiles and volatiles in Apollo 16 soils and rocks. Proc. 7th Lunar Sci. Conf. 727-742.
- Cushing J.A., Taylor G.J., Norman M.D. and Keil K. (1999) The granulitic impactite suite: Impact melts and metamorphic breccias of the early lunar crust. *Meteoritics & Planet. Sci.* 34, 185-195.
- Drozd R.J., Hohenberg C.M., Morgan C.J. and Ralston C.E. (1974) Cosmic-ray exposure history at the Apollo 16 and other lunar sites: lunar surface dynamics. *Geochim. Cosmochim. Acta* 38, 1625-1642.
- Drozd R.J., Hohenberg C.M., Morgan C.J., Podosek F.A. and Wroge M.L. (1977) Cosmic-ray exposure history at Taurus-Littrow. Proc. 8th Lunar Sci. Conf. 3027-3043.
- Ganapathy R., Morgan J.W., Higuchi H., Anders E. and Anderson A.T. (1974) Meteoritic and volatile elements in Apollo 16 rocks and in separated phases from 14306. Proc. 5th Lunar Sci. Conf., 1659-1683.
- Hertogen J., Janssens M.-J., Takahashi H., Palme H. and Anders E. (1977) Lunar basins and craters: Evidence for systematic compositional changes of bombarding population. Proc. 8th Lunar Sci. Conf. 17-45.
- Hollister L.S. (1973) Sample 67955: A description and a problem. Proc. 4th Lunar Sci. Conf. 633-641.
- Hubbard N.J., Rhodes J.M., Wiesmann H., Shih C.Y. and Bansal B.M. (1974) The chemical definition and interpretation of rock types from the non-mare regions of the Moon. Proc. 5th Lunar Sci. Conf. 1227-1246.
- Huebner J.S., Lipin B.R. and Wiggins L.B. (1976) Partitioning of chromium between silicate crystals and melts. Proc. 7th Lunar Sci. Conf. 1195-1220.
- Hunter R.H. and Taylor L.A. (1981) Rust and schreibersite in Apollo 16 highland rocks: Manifestations of volatile-element mobility. Proc. 12th Lunar Planet. Sci. Conf. 253-259.
- James O.B. (1980) Rocks of the early lunar crust. Proc. 11th Lunar Planet. Sci. Conf. 365-393.
- Lindstrom M.M. and Lindstrom D.J. (1986) Lunar granulites and their precursor anorthositic norites of the early lunar crust. Proc. 16th Lunar Planet. Sci. Conf. in J. Geophys. Res. 91, D263-D276.
- Lindstrom M.M. and Salpus P.A. (1981) Geochemical studies of rocks from North ray Crater Apollo 16. Proc. 12th Lunar Planet. Sci. Conf. 305-322.
- LSPET (1972c) Preliminary examination of lunar samples. Apollo 16 Preliminary Science Report. NASA SP-315, 7-1—7-58.
- LSPET (1973b) The Apollo 16 lunar samples: Petrographic and chemical description. *Science* 179, 23-34.
- Maurer P., Eberhardt P., Geiss J., Grogler N., Stettler A., Brown G.M., Peckett A. and Krahenbuhl U. (1978) Pre-Imbrium craters and basins: ages, compositions and excavation depths of Apollo 16 breccias. *Geochim. Cosmochim. Acta* 42, 1687-1720.
- Misra K.C. and Taylor L.A. (1975) Characteristics of metal particles in Apollo 16 rocks. Proc. 6th Lunar Sci. Conf. 615-639.
- Morgan J.W., Ganapathy R., Higuchi H., Krahenbuhl U. and Anders E (1974a) Lunar basins: Tentative characterization of projectiles, from meteoritic elements in Apollo 17 boulders. Proc. 5th Lunar Sci. Conf. 1703-1736.
- Nord G.L., Christie J.M., Heuer A.H. and Lally J.S. (1975) North Ray Crater breccias: An electron petrographic study. Proc. 6th Lunar Sci. Conf. 779-797.
- Norman M.D., Shih C.-Y., Nyquist L.E., Bogard D.D. and Taylor L.A. (2007) Early impacts on the moon: Crystallization ages of Apollo 16 melt breccias (abs#1991). *Lunar Planet. Sci. XXXVIII* Lunar Planetary Institute, Houston.
- Nyquist L.E., Bansal B.M., Wiesmann H. and Jahn B.-M. (1974a) Taurus-Littrow chronology: some constraints on early lunar crustal development. Proc. 5th Lunar Sci. Conf. 1515-1539.
- Oberli F., Huneke J.C. and Wasserburg G.J. (1979) U-Pb and K-Ar systematics of cataclysm and precataclysm lunar impactites (abs). *Lunar Planet. Sci. X*, 940-942. Lunar Planetary Institute, Houston.
- Palme H., Baddenhausen H., Blum K., Cendales M., Dreibus G., Hofmeister H., Kmse H., Palme C., Spettel B. Vilcsek E. and Wanke H. (1978) New data on lunar samples and achondrites and a comparison of the least fractionated samples from the earth, the moon, and the eucrite parent body. Proc. 9th Lunar Planet. Sci. Conf. 25-57.

Pepin R.O., Basford J.R., Dragon J.C., Johnson N.L., Coscio M.R. and Murthy V.R. (1974) Rare gases and trace elements in Apollo 15 drill fines: Depositional chronologies and K-Ar ages and production rates of spallation-produced ^3He , ^{22}Ne and ^{38}Ar vrs depth. Proc. 5th Lunar Sci. Conf. 2149-2184.

Rancitelli L.A., Perkins R.W., Felix W.D. and Wogman N.A. (1973a) Lunar surface and solar process analysis from cosmogenic radionuclide measurements at the Apollo 16 site (abs). Lunar Sci. IV, 609-611. Lunar Planetary Institute, Houston.

Rancitelli L.A., Perkins R.W., Felix W.D. and Wogman N.A. (1973b) Primordial radionuclides in soils and rocks from the Apollo 16 site (abs). Lunar Sci. IV, 615-617. Lunar Planetary Institute, Houston.

Roedder E. and Weiblen P.W. (1977b) Shock glass veins in some lunar and meteoritic samples – Their nature and possible origin. Proc. 8th Lunar Sci. Conf. 2593-2615.

Ryder G. and Norman M.D. (1979a) Catalog of pristine non-mare materials Part 1. Non-anorthosites, revised. NASA-JSC Curatorial Facility Publ. JSC 14565, Houston. 147 pp.

Ryder G. and Norman M.D. (1979b) Catalog of pristine non-mare materials Part 2. Anorthosites. Revised. Curators Office JSC #14603

Ryder G. and Norman M.D. (1980) Catalog of Apollo 16 rocks (3 vol.). Curator's Office pub. #52, JSC #16904

Stöffler D., Bischoff A., Borchardt R., Burghel A., Deutsch A., Jessberger E.K., Ostertag R., Palme H., Spettel B., Reimold W.U., Wacker K. and Wanke H. (1985) Composition and evolution of the lunar crust in the Descartes highlands. Proc. 15th Lunar Planet. Sci. Conf in J. Geophys. Res. 90, C449-C506.

Ulrich G.E. (1973) A geologic model for North Ray Crater and stratigraphic implications for the Descartes region. Proc. 4th Lunar Sci. Conf. 27-39.

Ulrich G.E. (1981) Geology of North Ray Crater. In U.S. Geol. Survey Prof. Paper 1048, 45-81.

Wasson J.T., Warren P.H., Kallemeyn G.W., McEwing C.E., Mitdfehldt D.W. and Boynton W.V. (1977) SCCR, a major component of highlands rocks. Proc. 8th Lunar Sci. Conf. 2237-2252.

Wilshire H.G., Stuart-Alexander D.E. and Schwarzman E.C. (1981) Petrology and distribution of returned samples, Apollo 16. in Geology of the Apollo 16 Area, Central Lunar Highlands. U.S. Geol. Survey Rpt 1048.