

# TOPOGRAPHICAL ANATOMY OF THE UPPER LIMB

**Václav Báča, David Kachlík**

Tereza Smržová, Martin Holek, Katarina Hubčíkova, Radek Jakša

Department of Anatomy, Third Faculty of Medicine,  
Charles University in Prague

*supported by grant FRVS 1101/2008/F3*



# INCISURA SCAPULAE (suprascapular notch)

## BORDERS:

### CAUDAL:

incisura scapulae

### CRANIAL:

lig. transversum scapulae superius

## CONTENT:

nervus suprascapularis

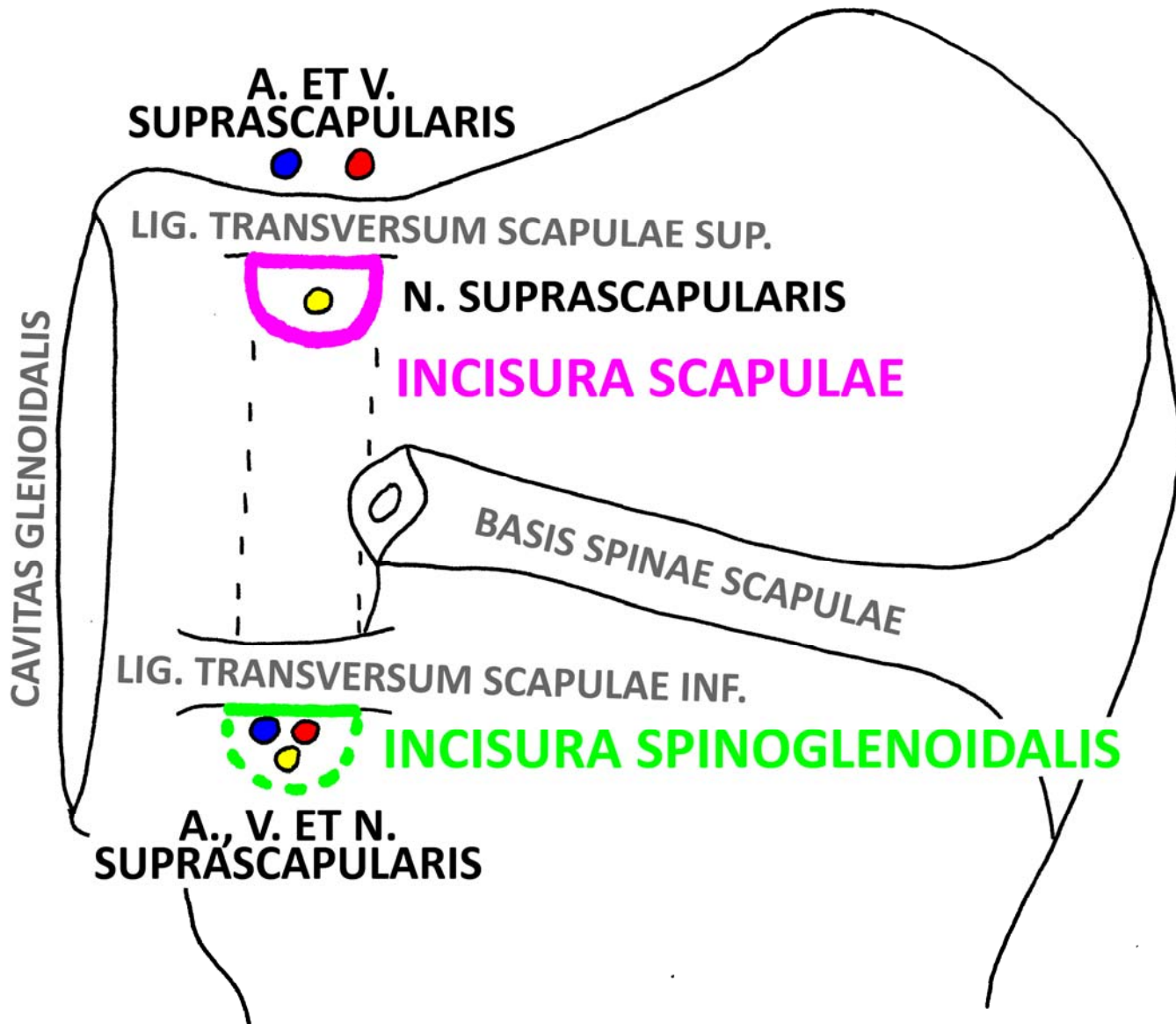
## STRUCTURE PASSING OVER THE LIGAMENT:

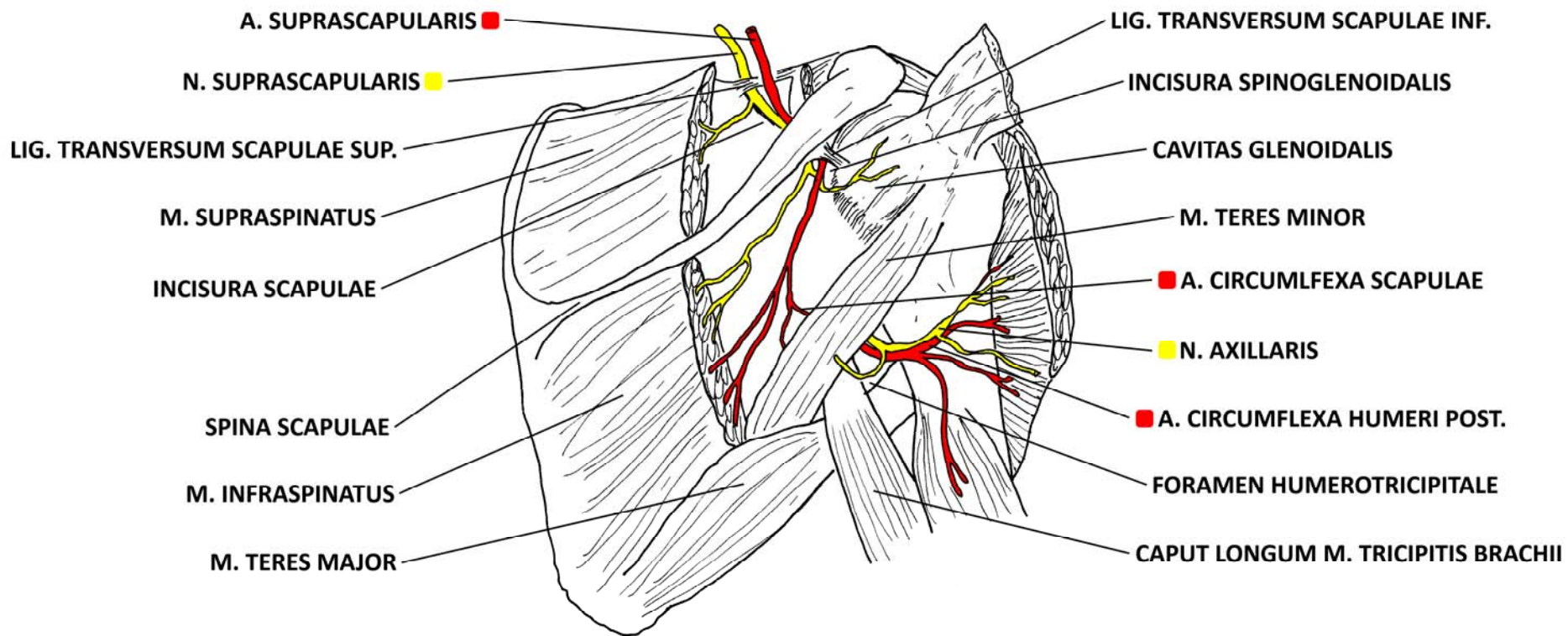
arteria suprascapularis

vena suprascapularis



# INCISURA SCAPULAE ET SPINOGLENOIDALIS





# INCISURA SPINOGLLENOIDALIS

## BORDERS:

### LATERAL:

cavitas glenoidalis

### MEDIAL:

base of spina scapulae

### PROXIMAL:

lig. transversum scapulae inferius

## CONTENT:

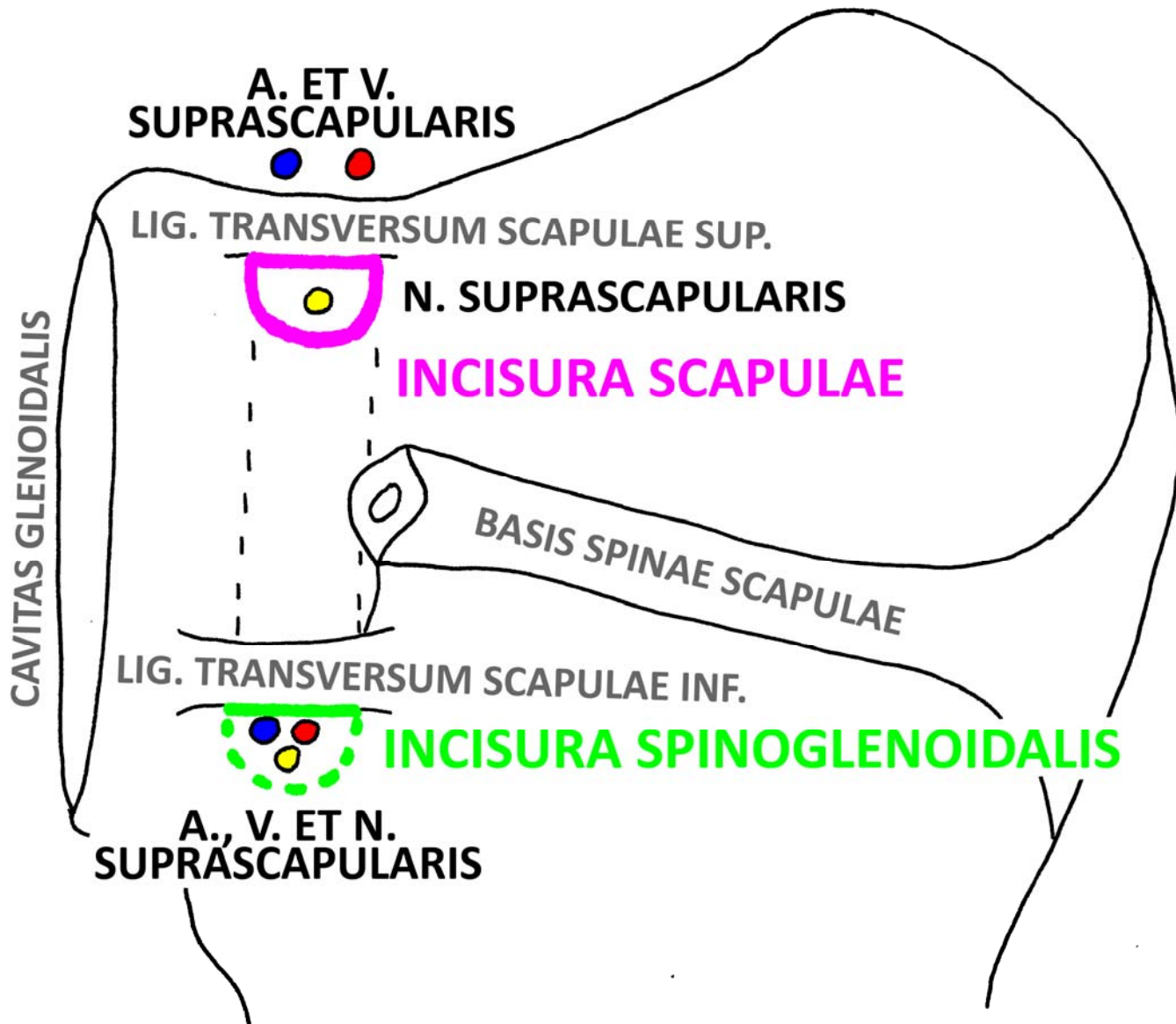
n. suprascapularis

a. suprascapularis

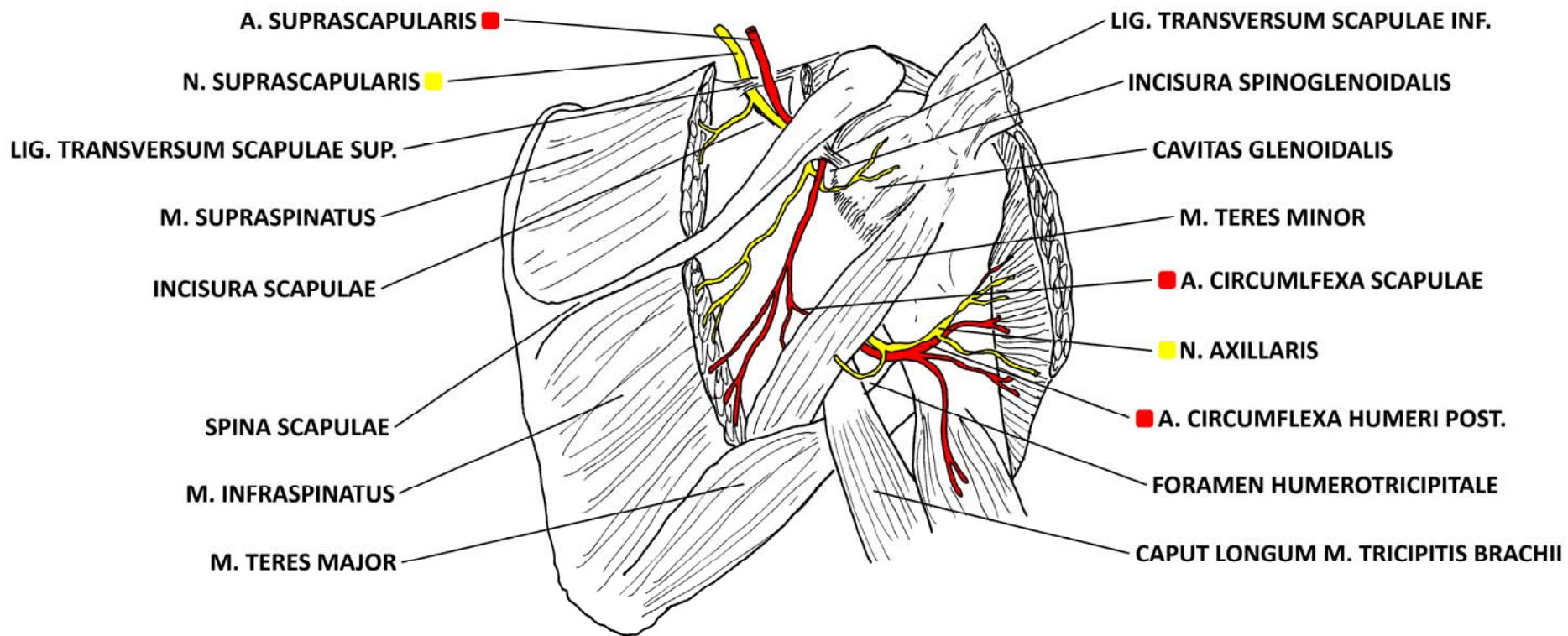
v. suprascapularis

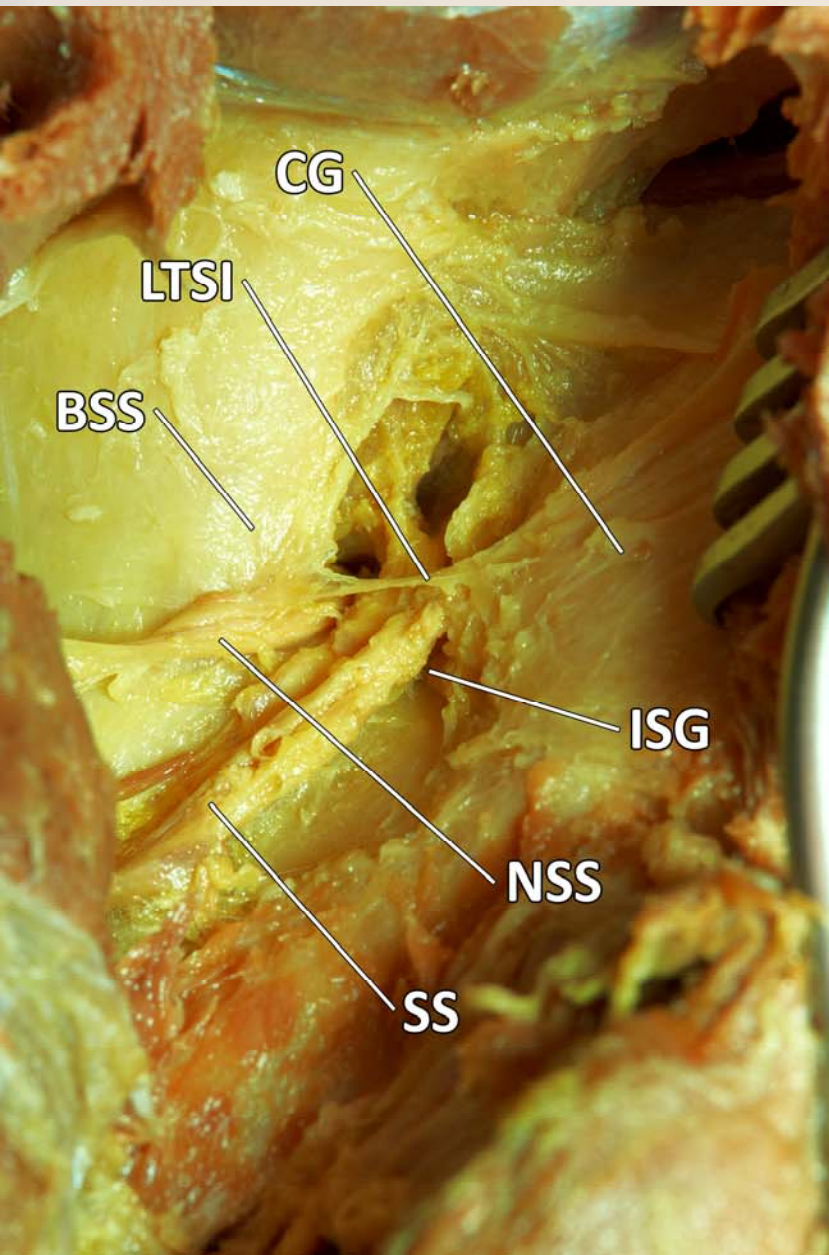


# INCISURA SCAPULAE ET SPINOGLENOIDALIS









**CG - CAVITAS GLENOIDALIS**  
**LTSI - LIG. TRANSVERSUM SCAPULAE INF.**  
**BSS - BASIS SPINAE SCAPULAE**  
**ISG - INCISURA SPINOGLENOIDALIS**  
**NSS - N. SUPRASCAPULARIS**  
**SS - A. ET V. SUPRASCAPULARIS**



# FORAMEN OMOTRICIPITALE (triangular space)

## BORDERS:

### PROXIMAL:

m. teres minor

### DISTAL:

m. teres major

### LATERAL:

caput longum m. tricipitis brachii

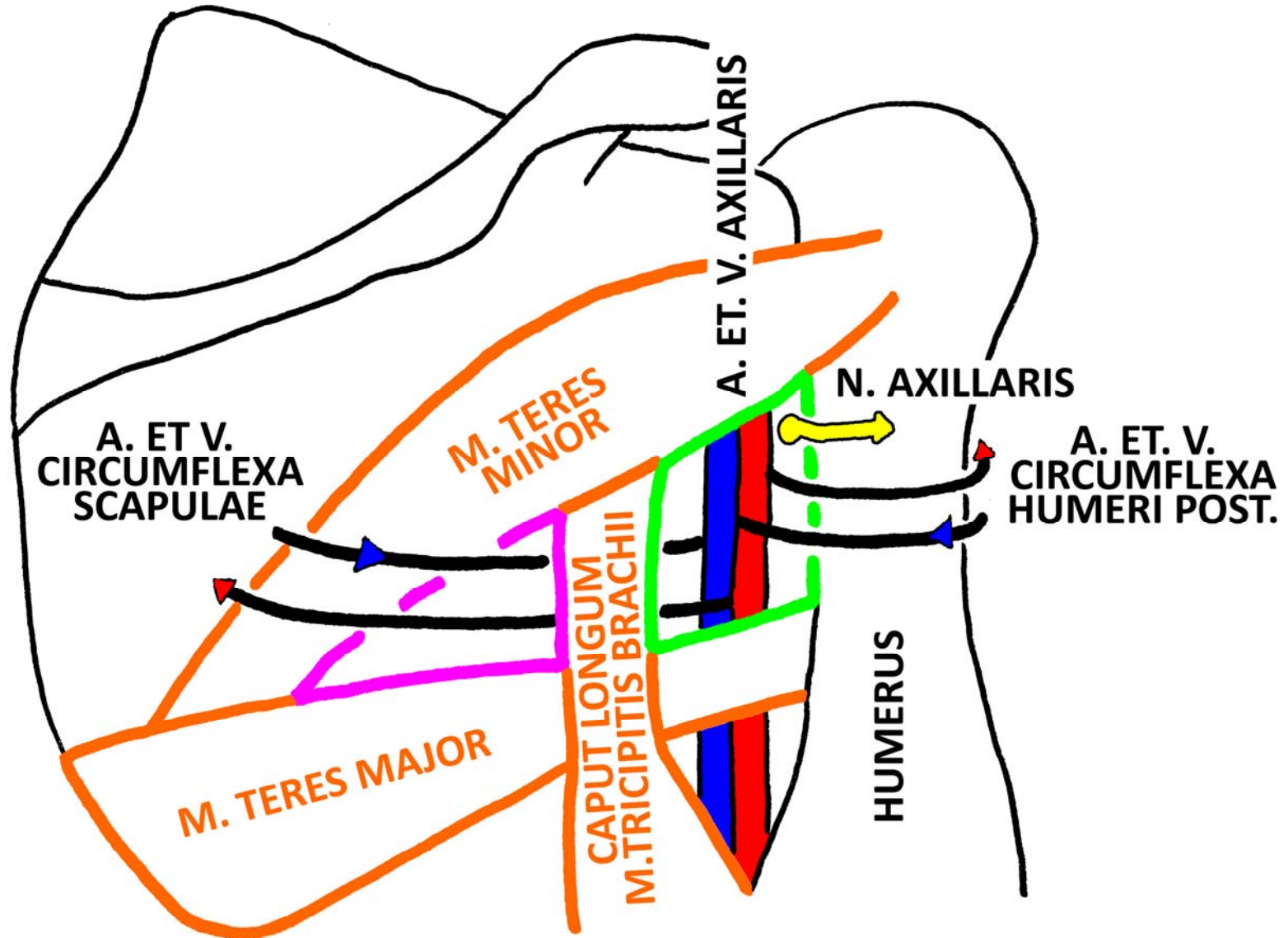
## CONTENT:

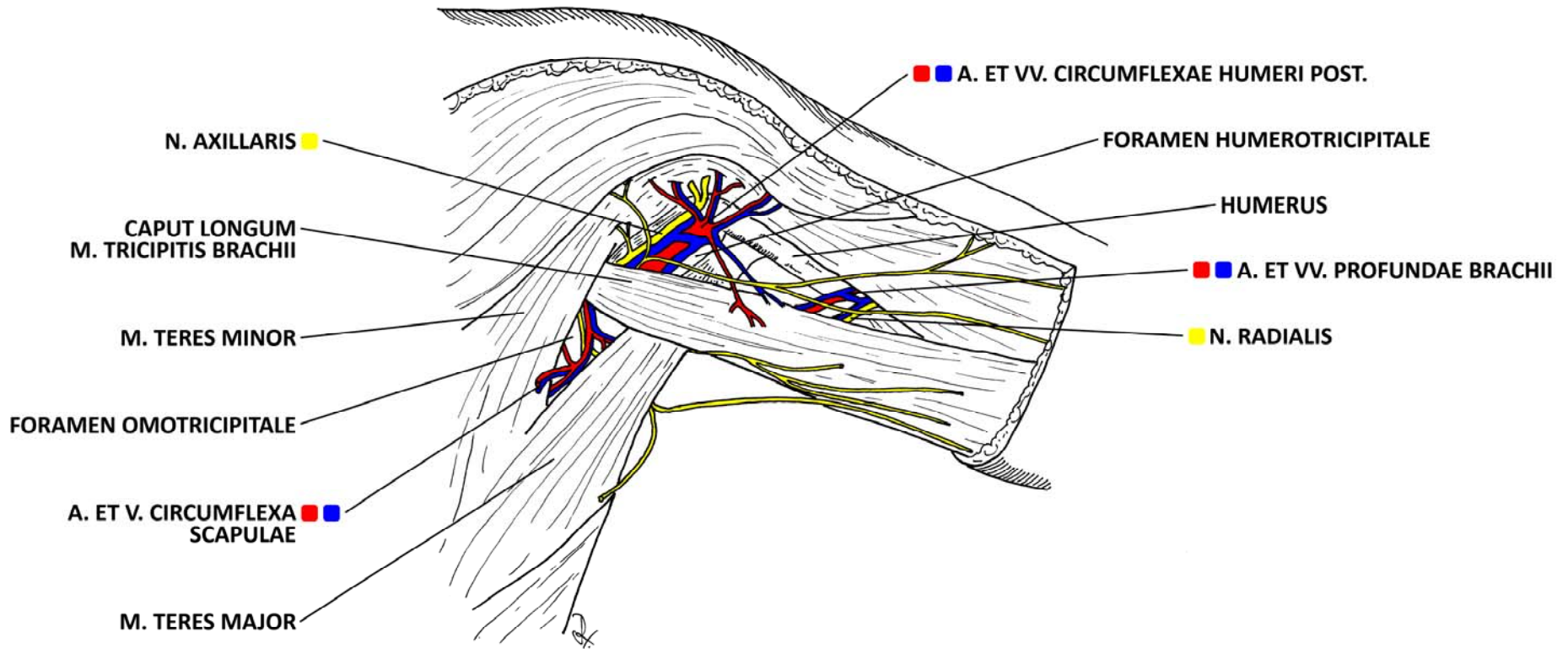
a. circumflexa scapulae

v. circumflexa spaculae

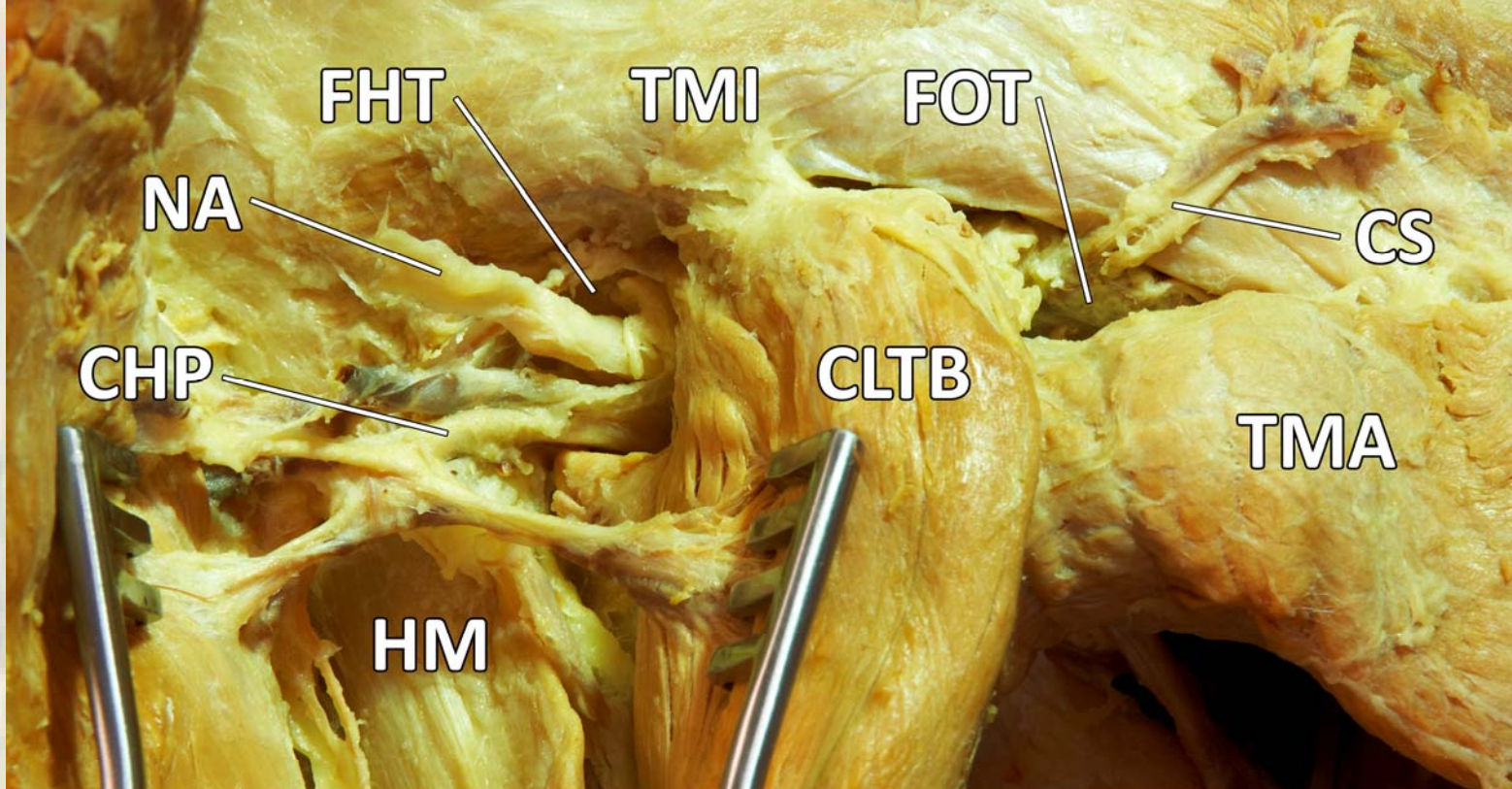


# FORAMEN OMOTRICIPITALE ET HUMEROTRICIPITALE









**CHP - A. ET V. CIRCUMFLEXA HUMERI POST.**

**NA - N. AXILLARIS**

**FHT - FORAMEN HUMEROTRICIPITALE**

**TMI - M. TERES MINOR**

**FOT - FORAMEN OMOTRICIPITALE**

**CS - A. ET V. CIRCUMFLEXA SCAPULAE**

**HM - HUMERUS + JEHO SVALY**

**CLBT - CAPUT LONGUM M. TRICIPITIS BRACHII**

**TMA - M. TERES MAJOR**

# FORAMEN HUMEROTRICIPITALE (quadranglar space)

## BORDERS:

### PROXIMAL:

m. teres minor

### DISTAL:

m. teres major

### MEDIAL:

caput longum m. tricipitis brachii

### LATERAL:

humerus

## CONTENT:

n. axillaris

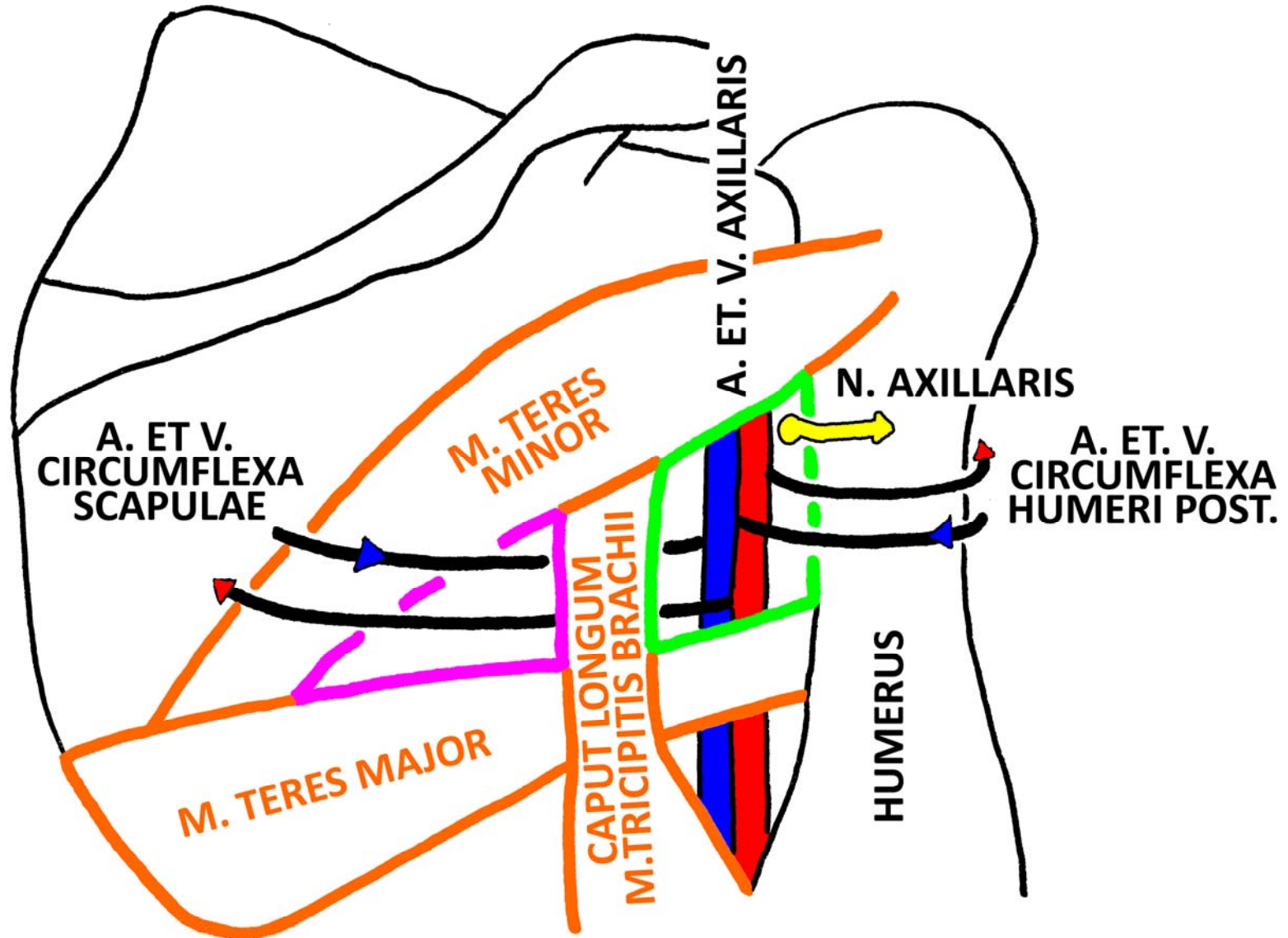
a. circumflexa humeri post.

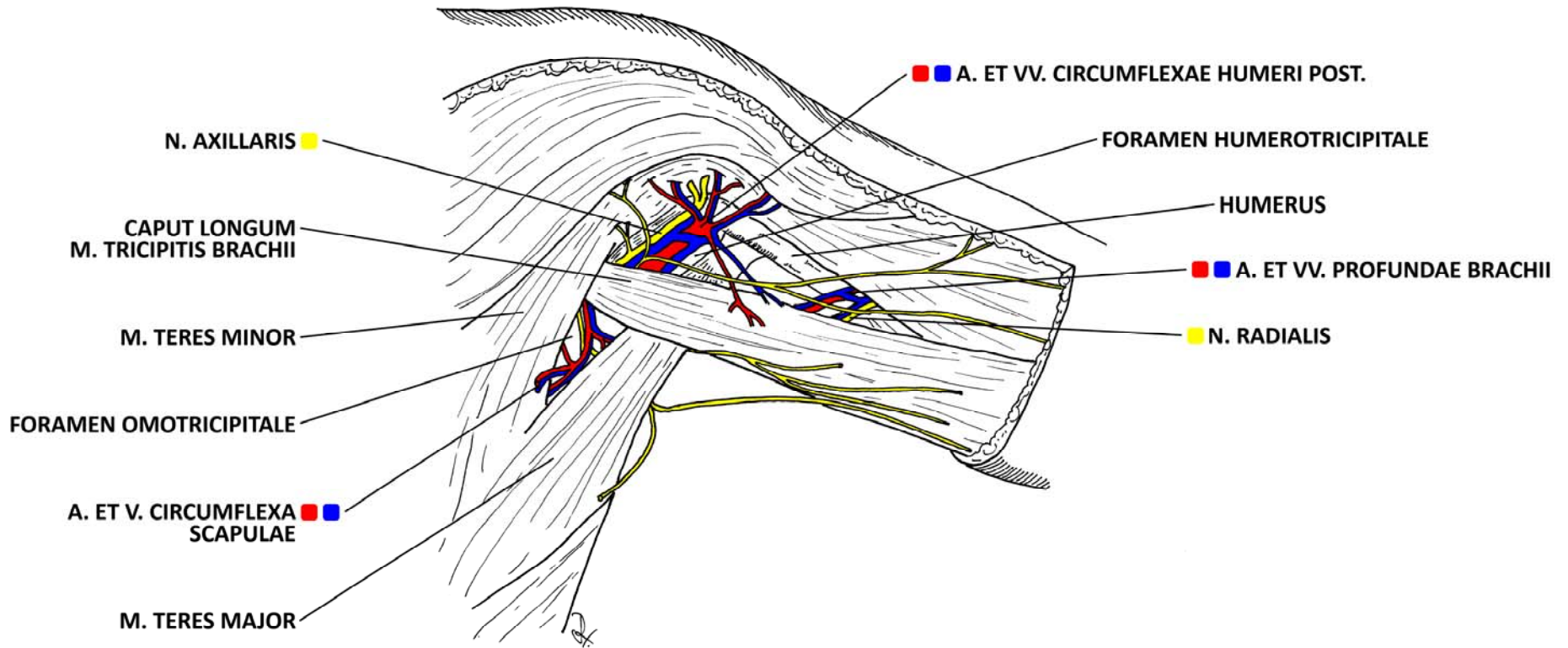
v. circumflexa humeri post.

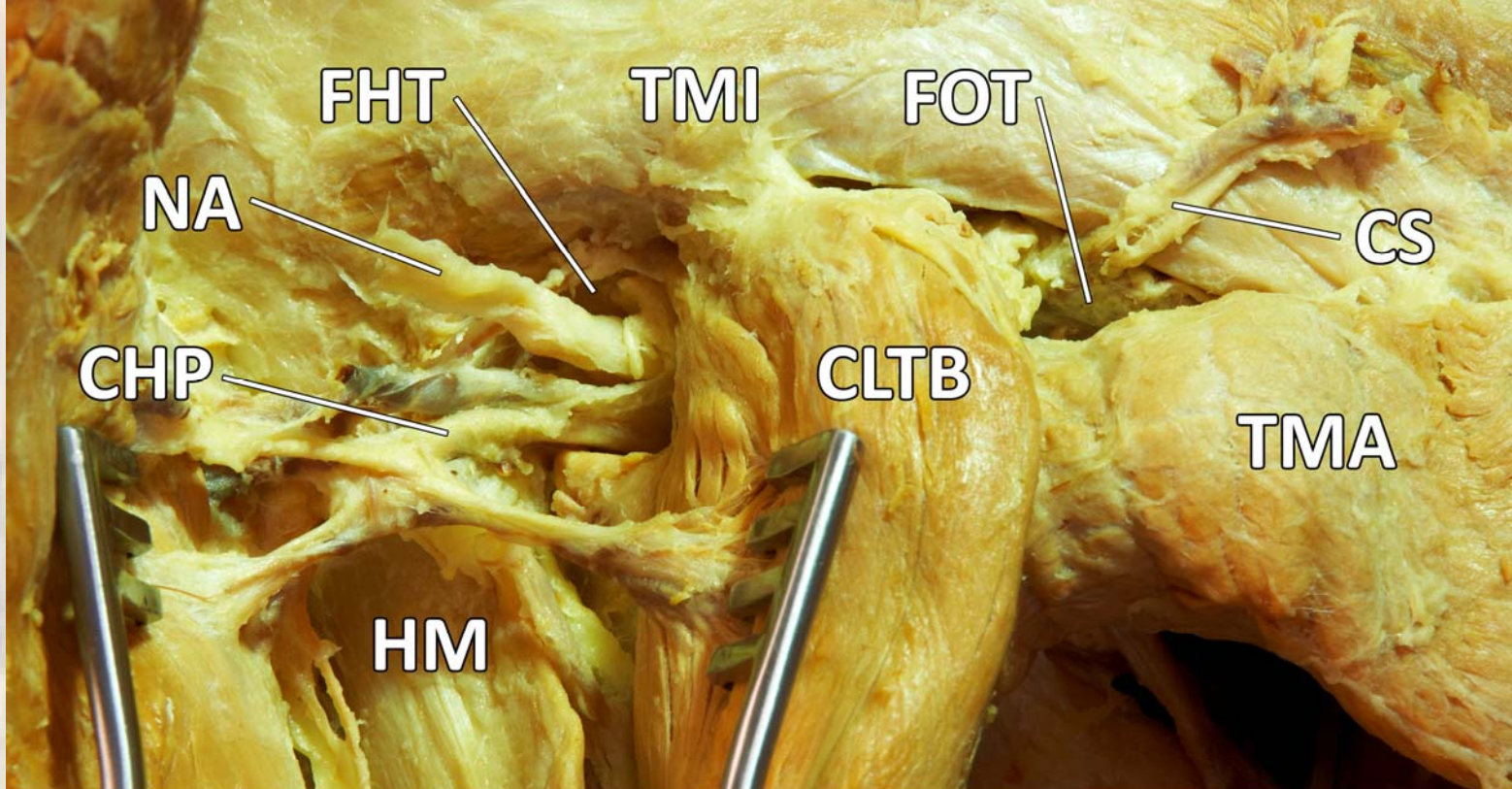




# FORAMEN OMOTRICIPITALE ET HUMEROTRICIPITALE







**CHP - A. ET V. CIRCUMFLEXA HUMERI POST.**

**NA - N. AXILLARIS**

**FHT - FORAMEN HUMEROTRICIPITALE**

**TMI - M. TERES MINOR**

**FOT - FORAMEN OMOTRICIPITALE**

**CS - A. ET V. CIRCUMFLEXA SCAPULAE**

**HM - HUMERUS + JEHO SVALY**

**CLBT - CAPUT LONGUM M. TRICIPITIS BRACHII**

**TMA - M. TERES MAJOR**



# TRIGONUM CLAVIPECTORALE s. TRIGONUM DELTOPETORALE (clavipectoral/deltopectoral triangle)

## BORDERS:

### CRANIAL:

clavicula

### MEDIAL:

m. pectoralis major

### LATERAL:

m. deltoideus

## CONTENT:

v. cephalica

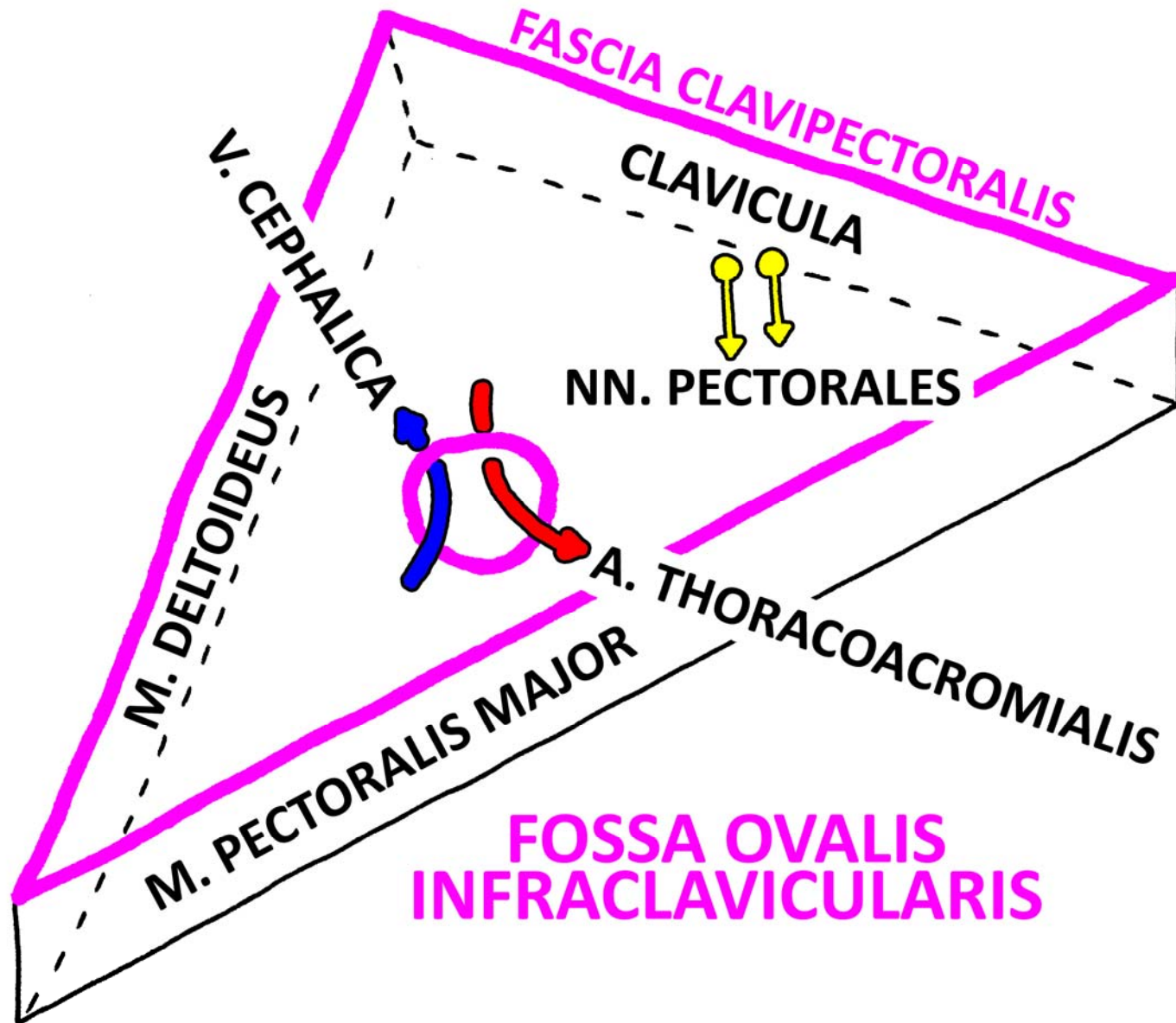
a. thoracoacromialis

nn. pectorales

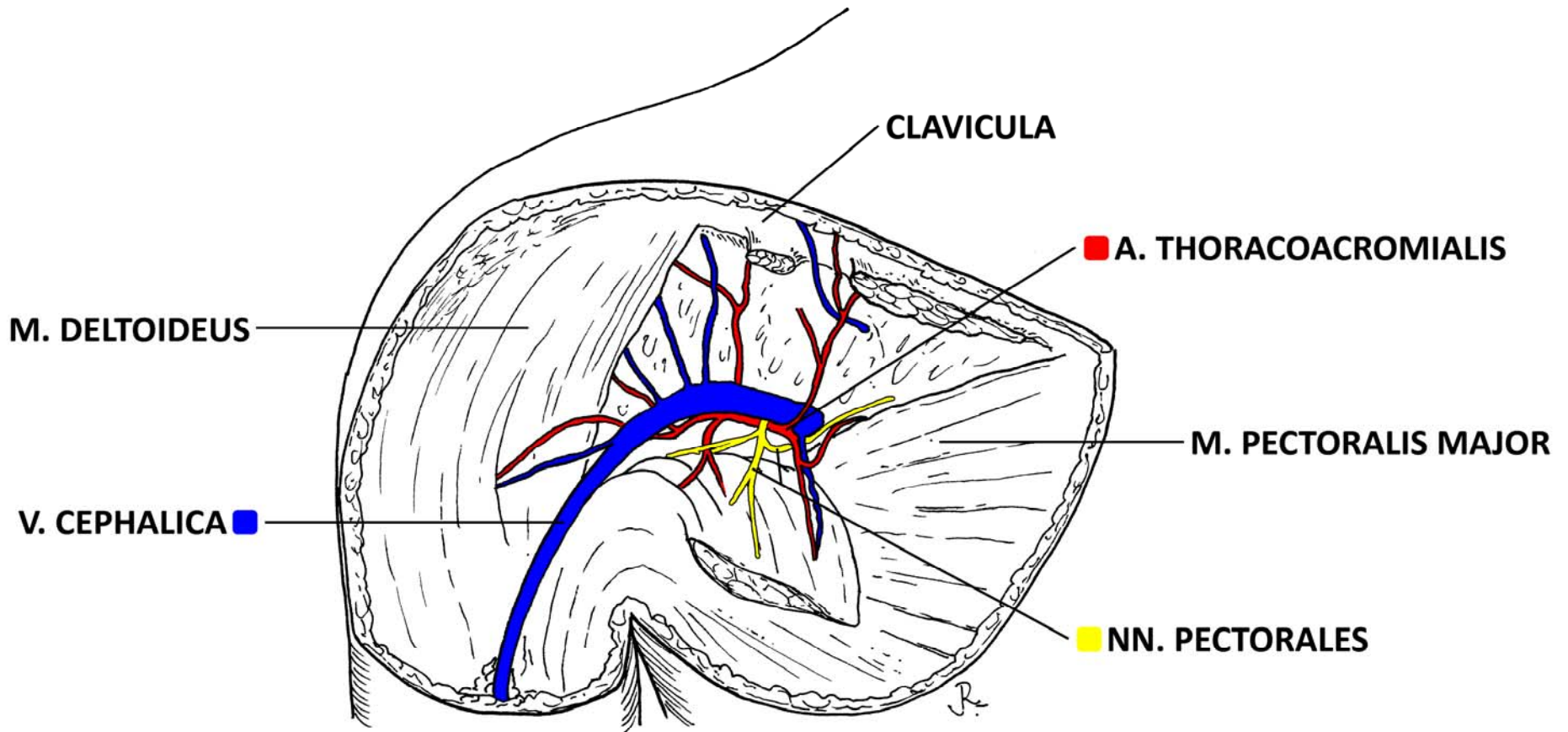
medialis et lateralis



# TRIGONUM CLAVIPECTORALE DX.







# FOSSA OVALIS INFRACLAVICULARIS /Mohrenheimi/ (infraclavicular fossa)

BORDERS:

passage in fascia clavipectoralis

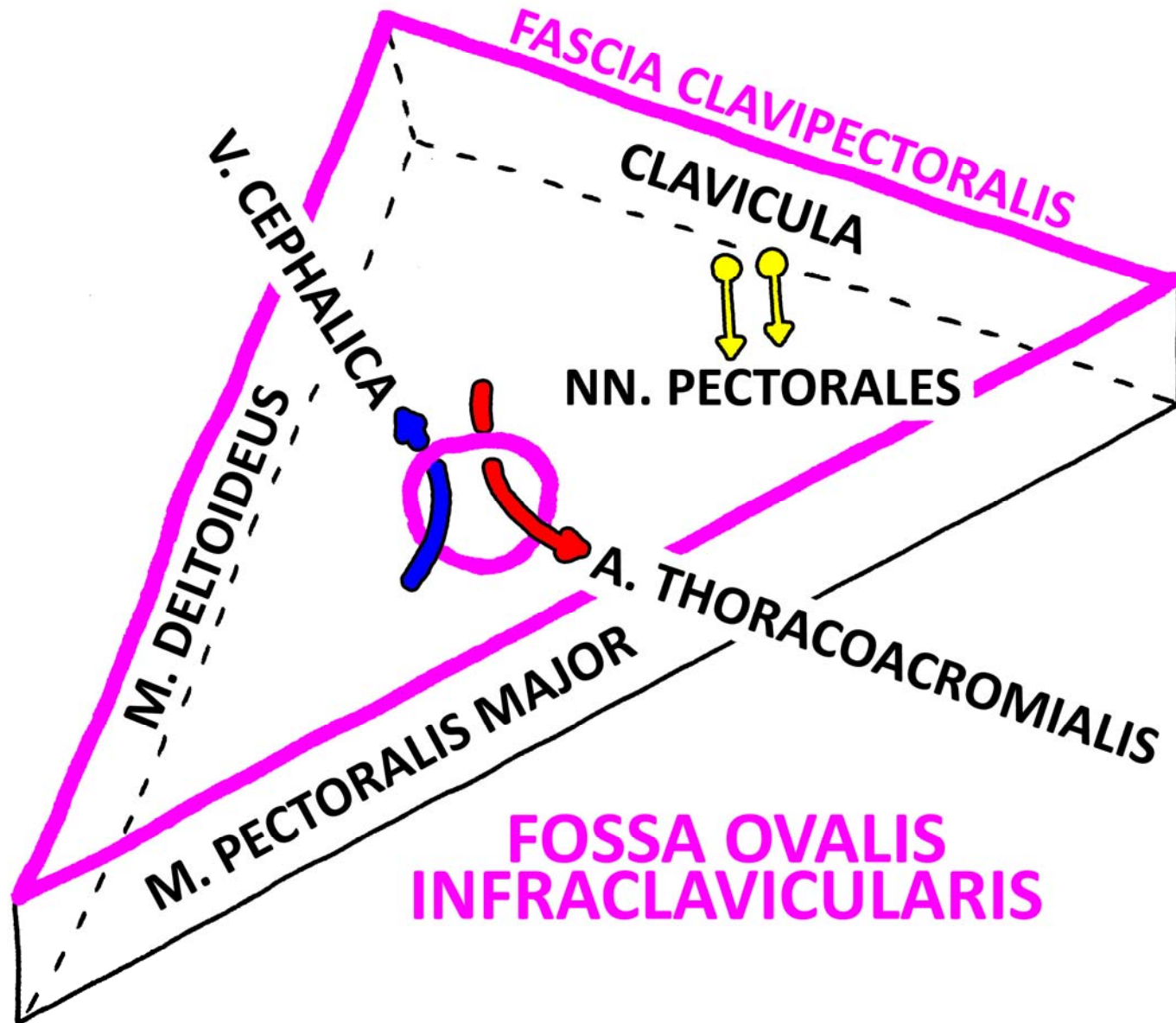
CONTENT:

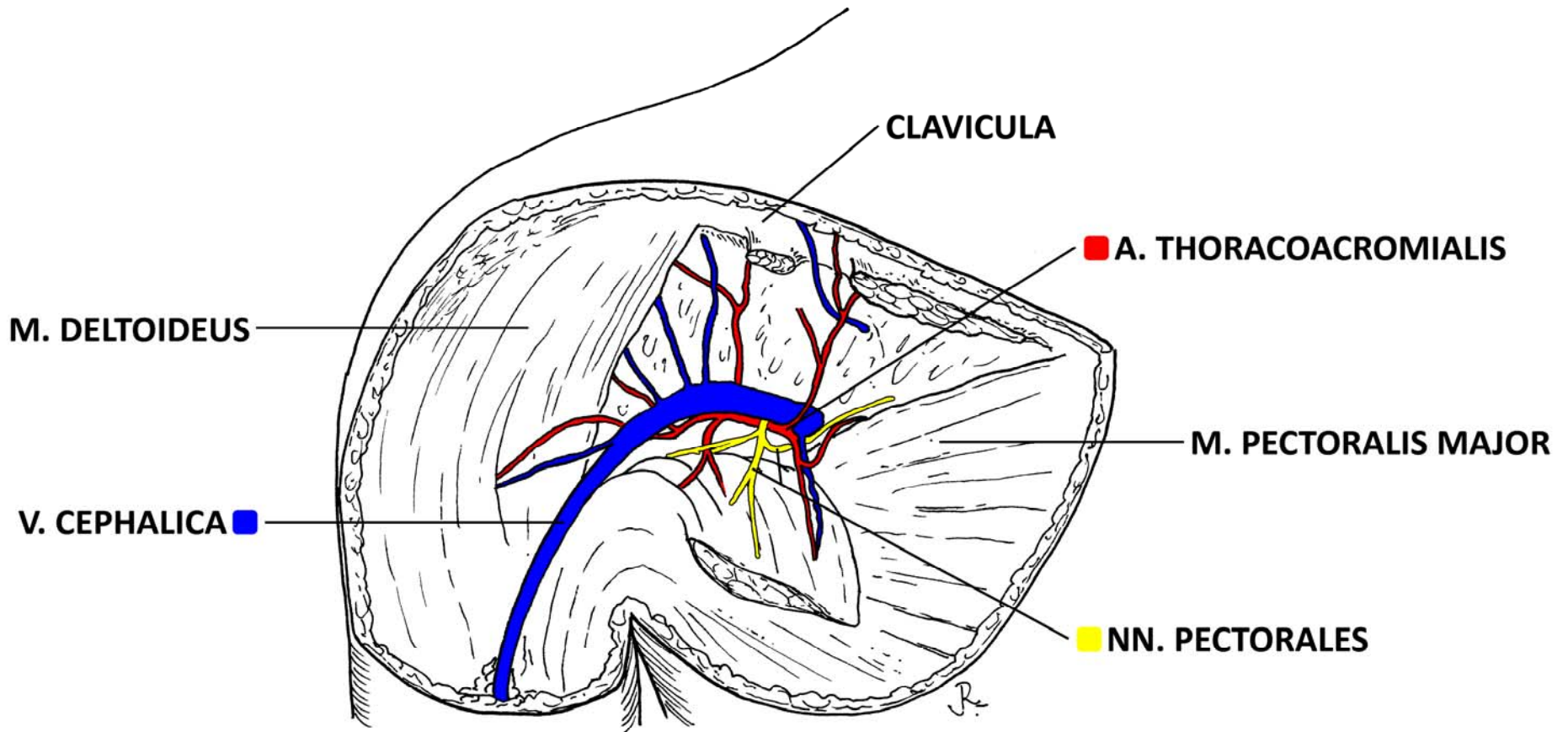
v. cephalica

a. thoracoacromialis



# TRIGONUM CLAVIPECTORALE DX.





# AXILLA

## (fossa axillaris, Axillary fossa)

### BORDERS:

#### TOP:

lower surface of the shoulder joint

#### VENTRAL:

mm. pectorales

#### DORSAL:

m. latissimus dorsi, m. teres major

#### MEDIAL:

m. serratus ant., thoracic wall and it's muscles

#### LATERAL:

humerus and it's muscles

### CONTENT:

a. axillaris and its branches

v. axillaris and its branches

plexus brachialis (pars infraclavicularis)

n. thoracodorsalis

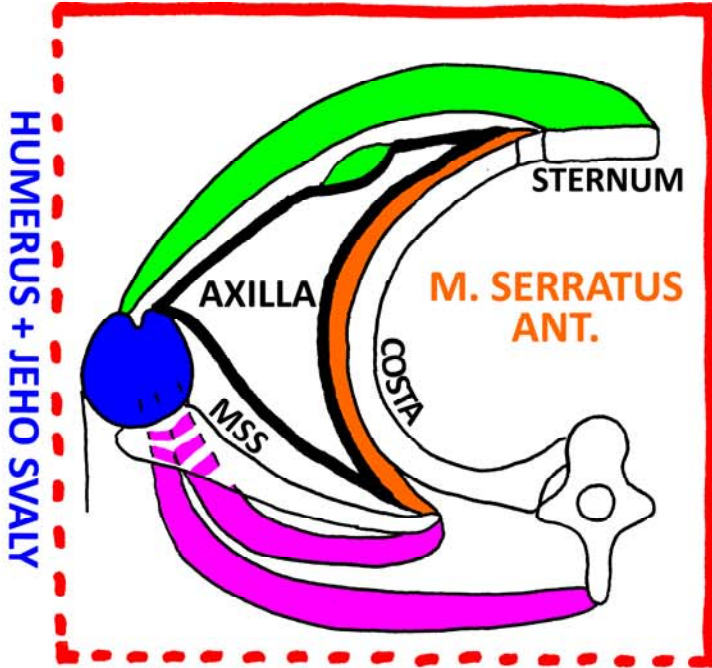
n. thoracicus longus

nodi lymphoidei axillares





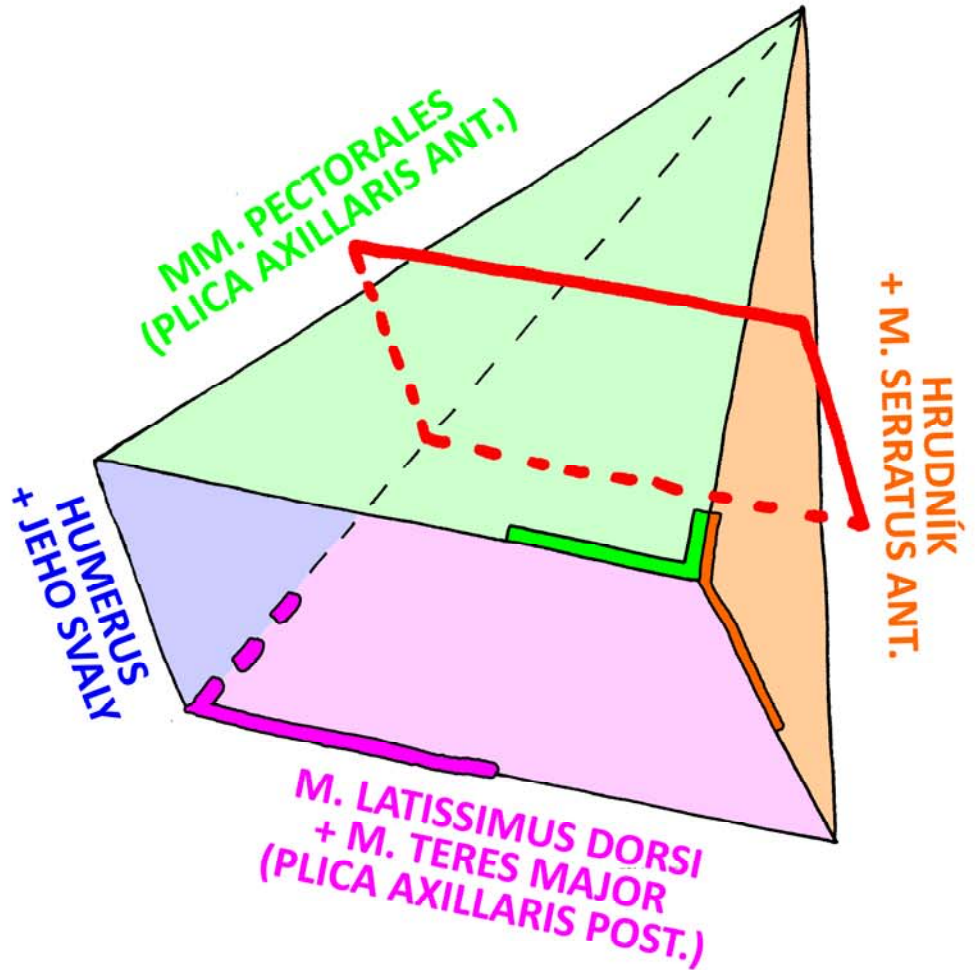
MM. PECTORALES  
(PLICA AXILLARIS ANT.)

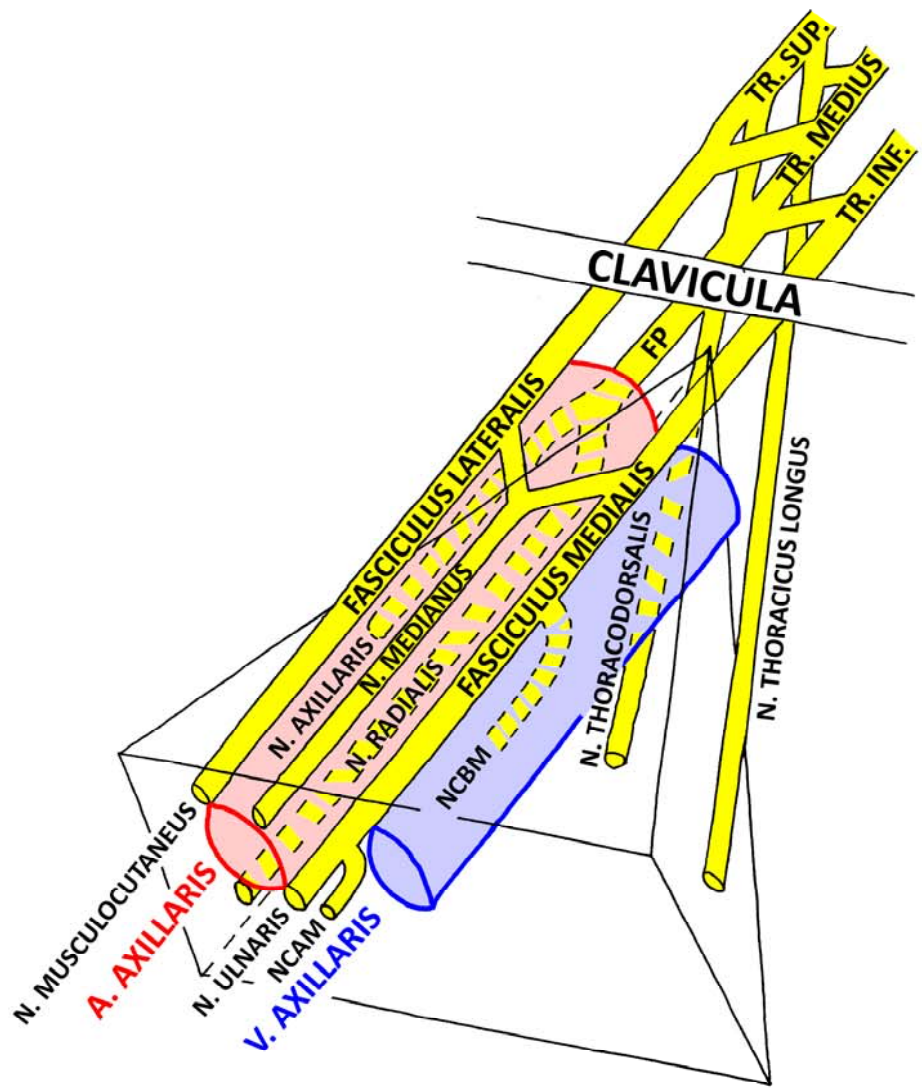
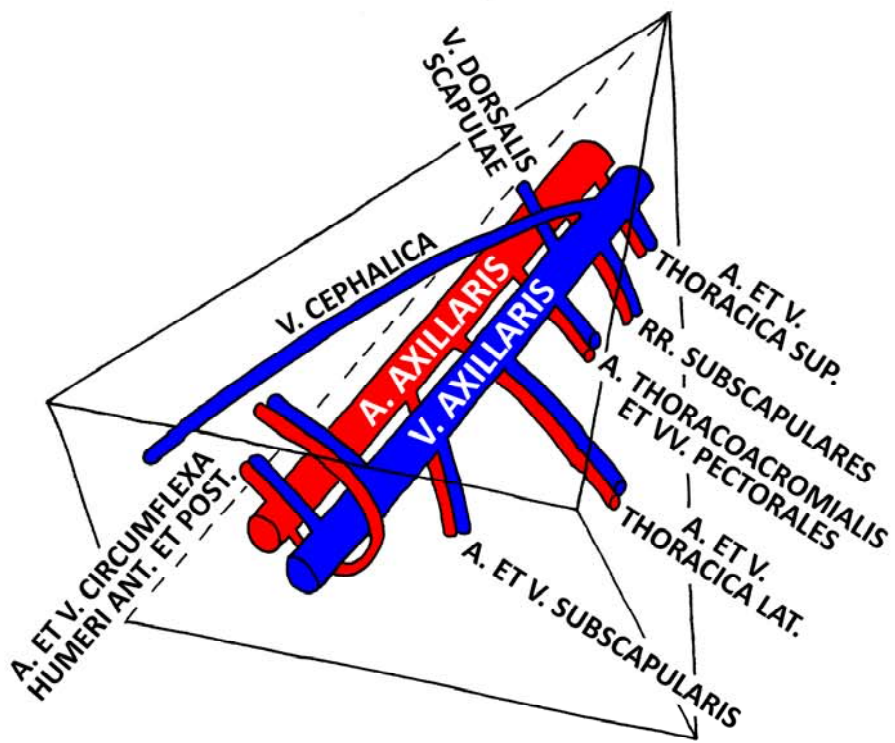


M. LATISSIMUS DORSI  
+ M. TERES MAJOR  
(PLICA AXILLARIS POST.)

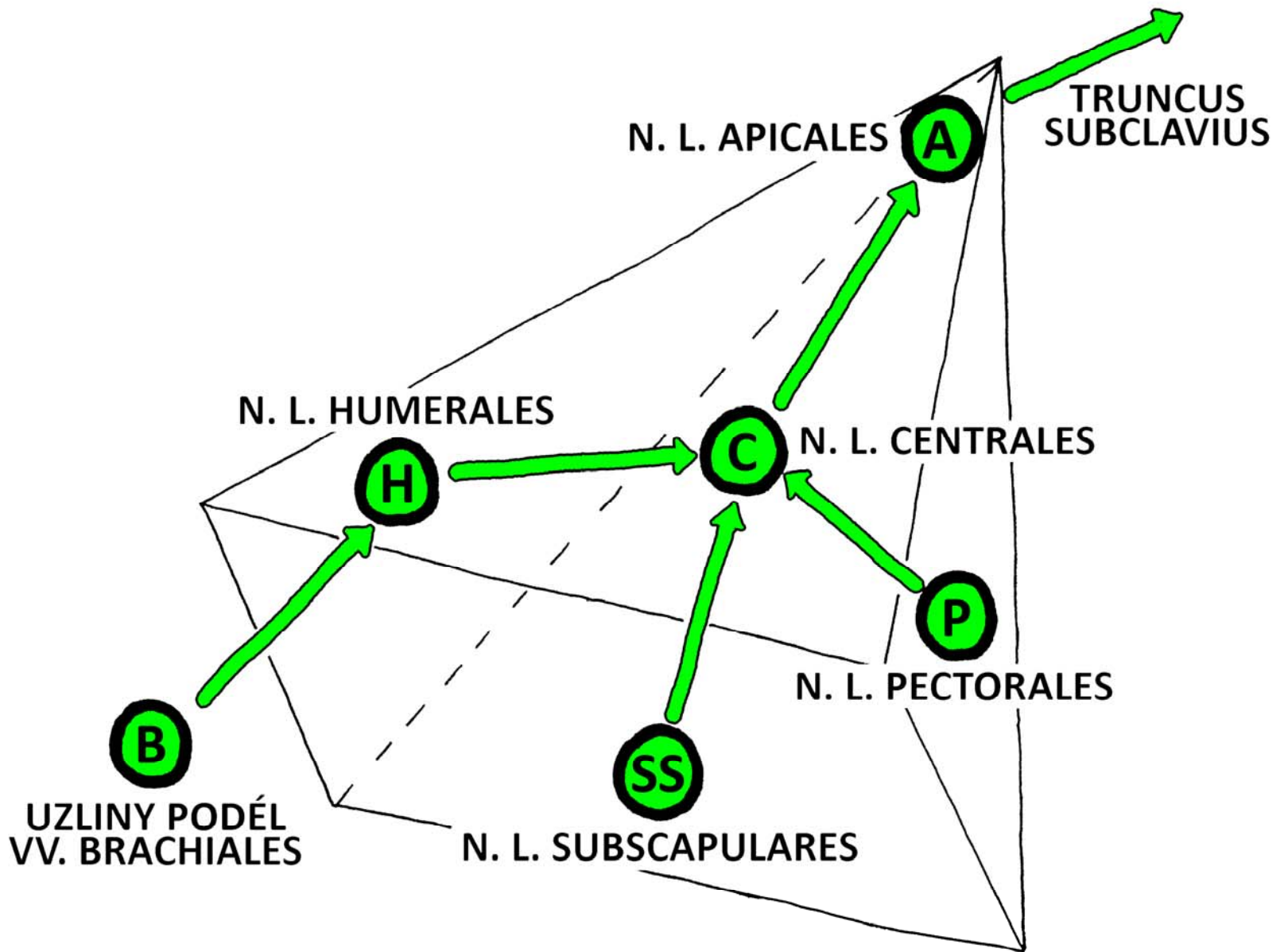
MSS = M. SUBSCAPULARIS

ART. HUMERI

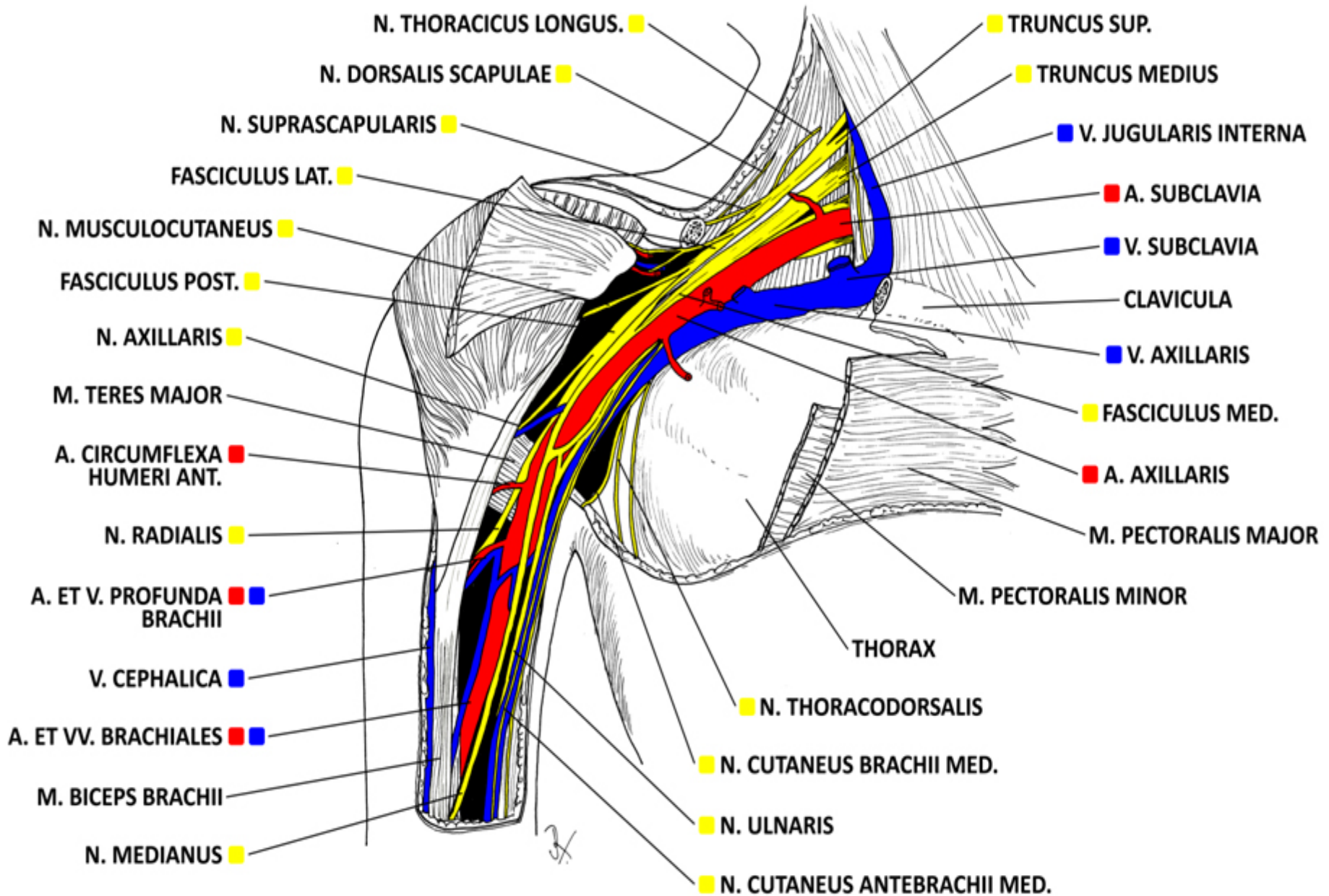




FP = FASCICULUS POSTERIOR  
 NCBM = N. CUTANEUS BRACHI MEDIALIS  
 NCAM = N. CUTANEUS ANTEBRACHII MEDIALIS







# SULCUS BICIPITALIS MEDIALIS (medial bicipital groove)

BORDERS:

**MEDIAL:**

between the ventral and dorsal  
muscle groups

CONTENT:

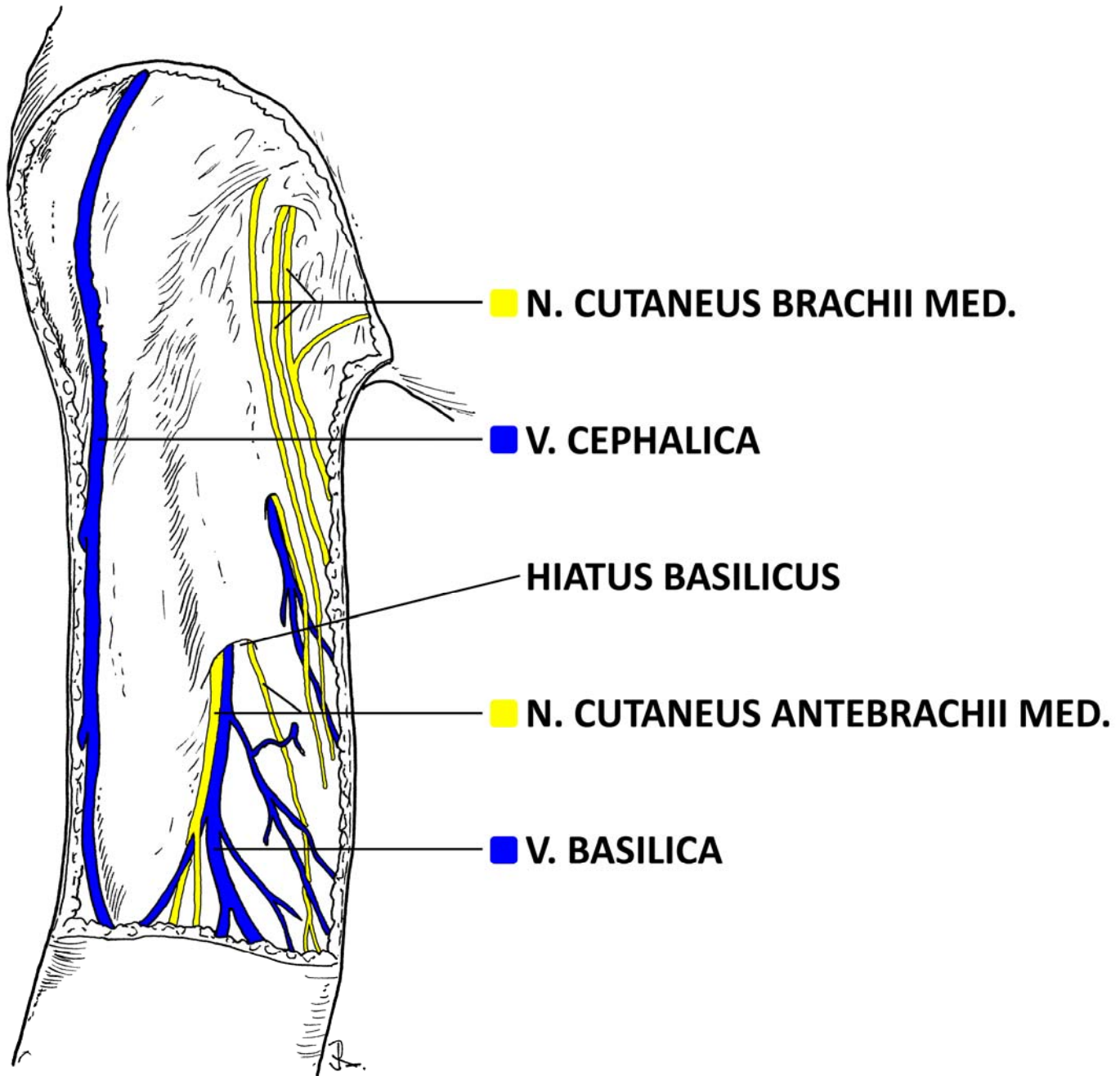
**v. basilica**

**n. cutaneus**

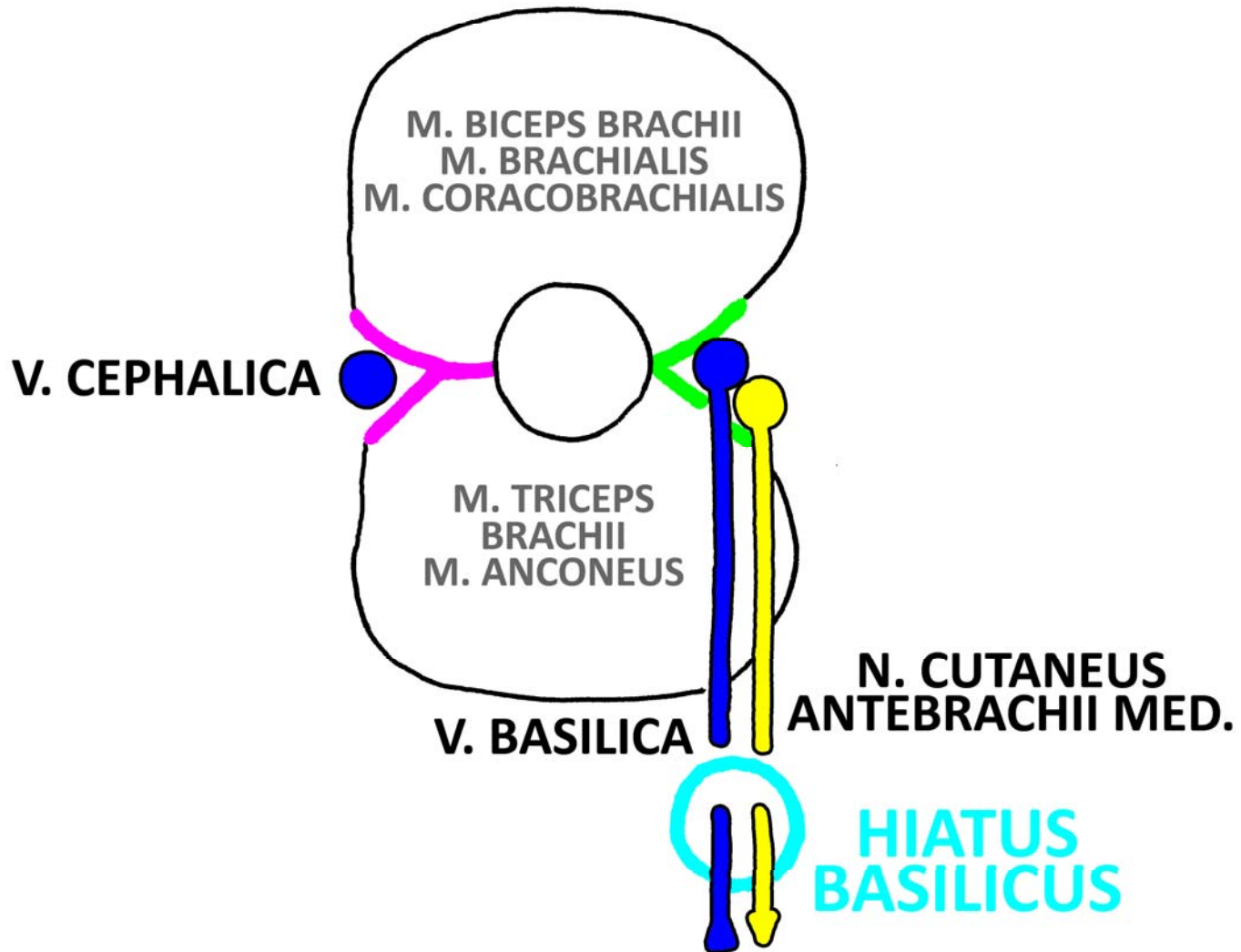
**antebrachii medialis**







# SULCUS BICIPITALIS MEDIALIS ET LATERALIS



# SULCUS BICIPITALIS LATERALIS (lateral bicipital groove)

BORDERS:

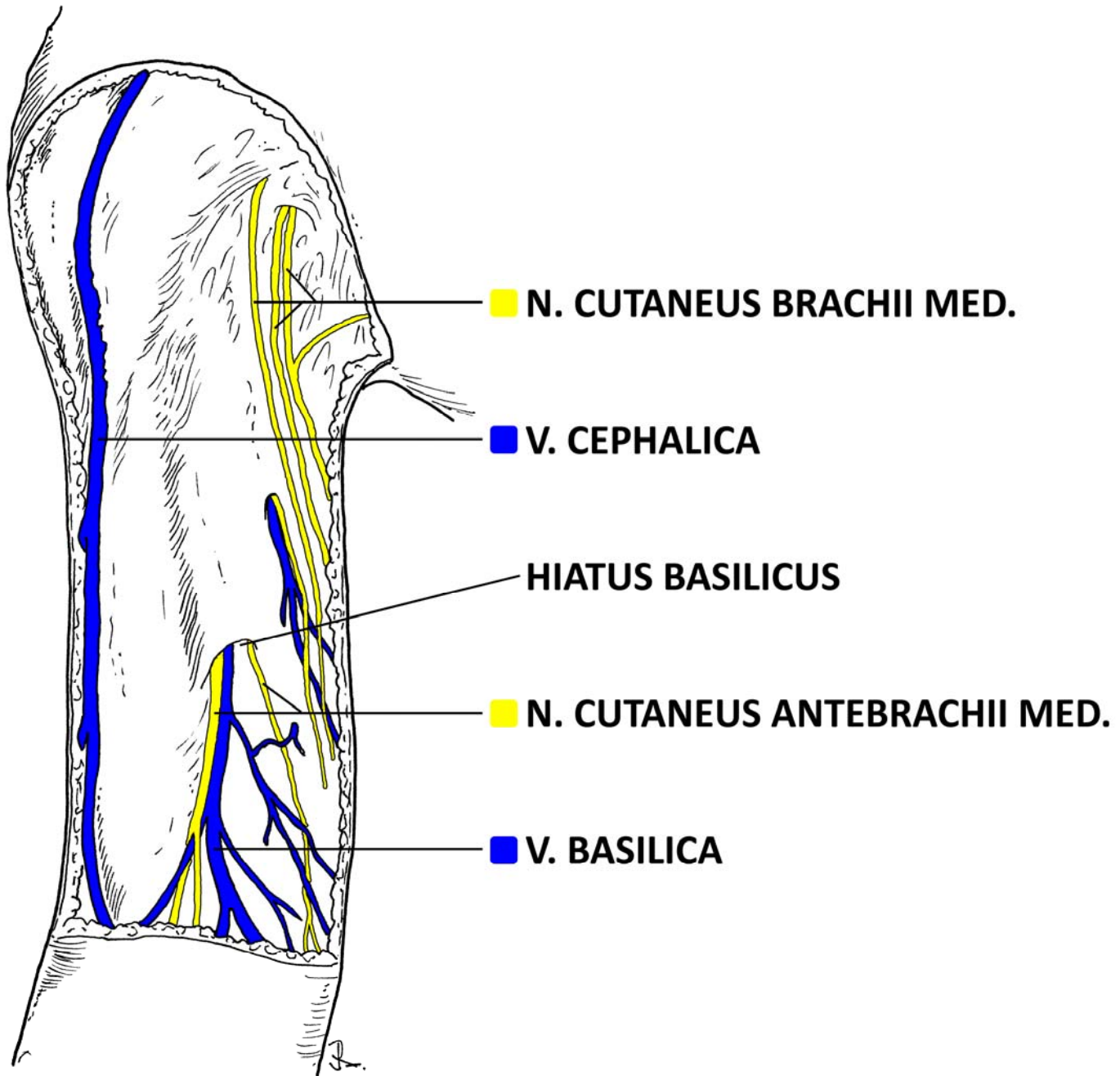
**LATERAL:**

between the ventral and dorsal  
muscle groups

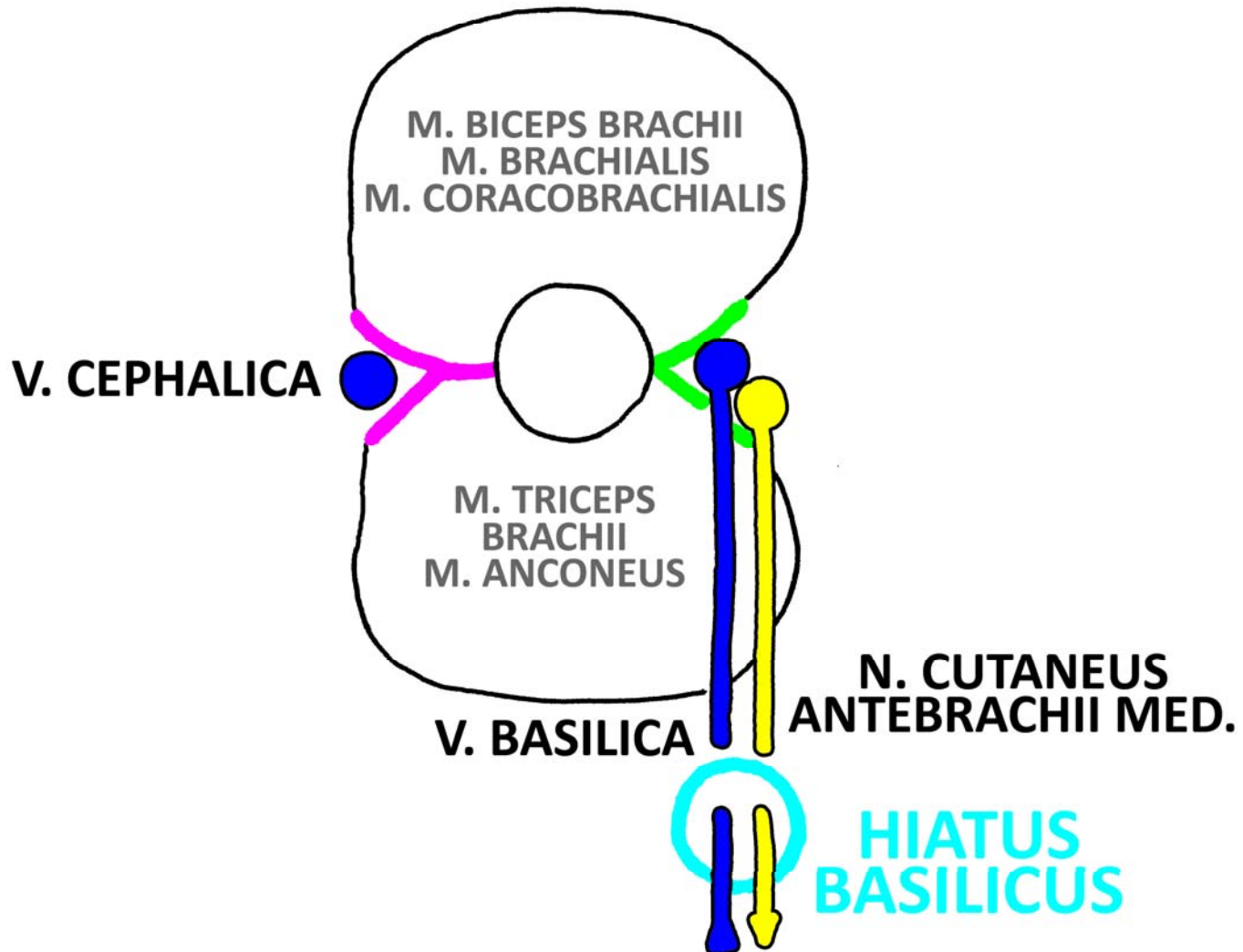
CONTENT:

**v. cephalica**





# SULCUS BICIPITALIS MEDIALIS ET LATERALIS





# HIATUS BASILICUS

## BORDERS:

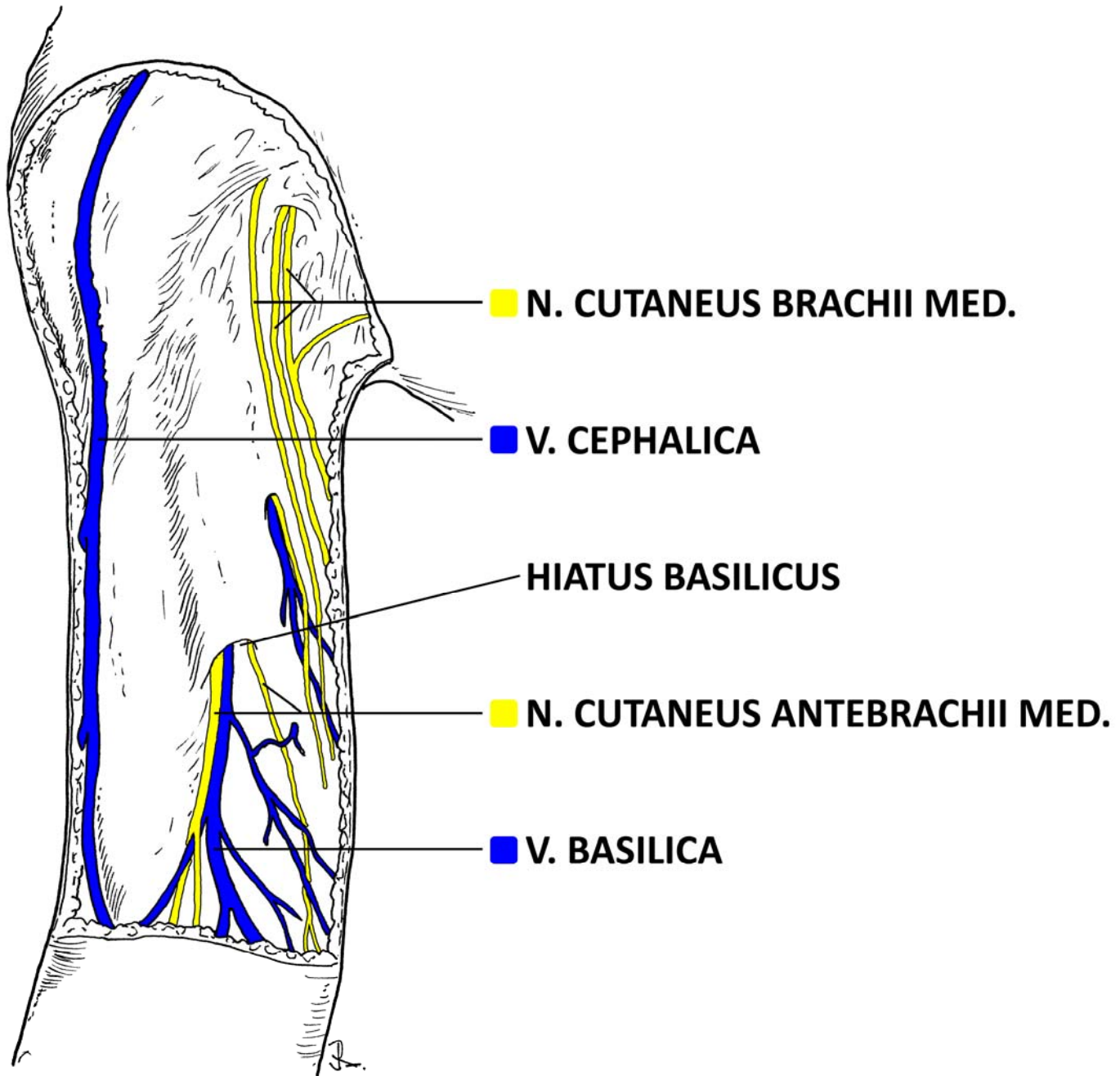
2 or 3 inches above the elbow skin groove on the ventral side of arm in fascia brachii

## CONTENT:

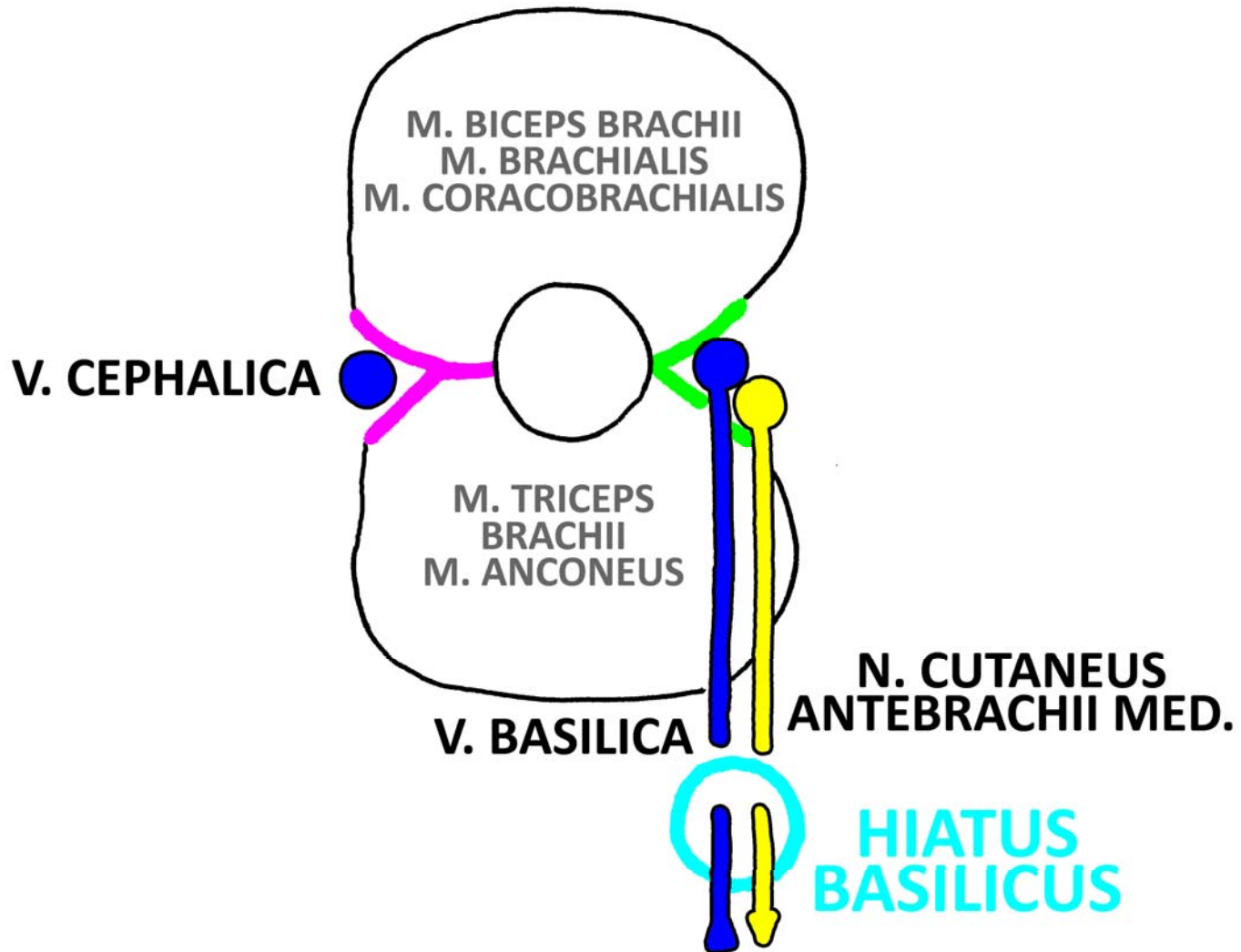
v. basilica

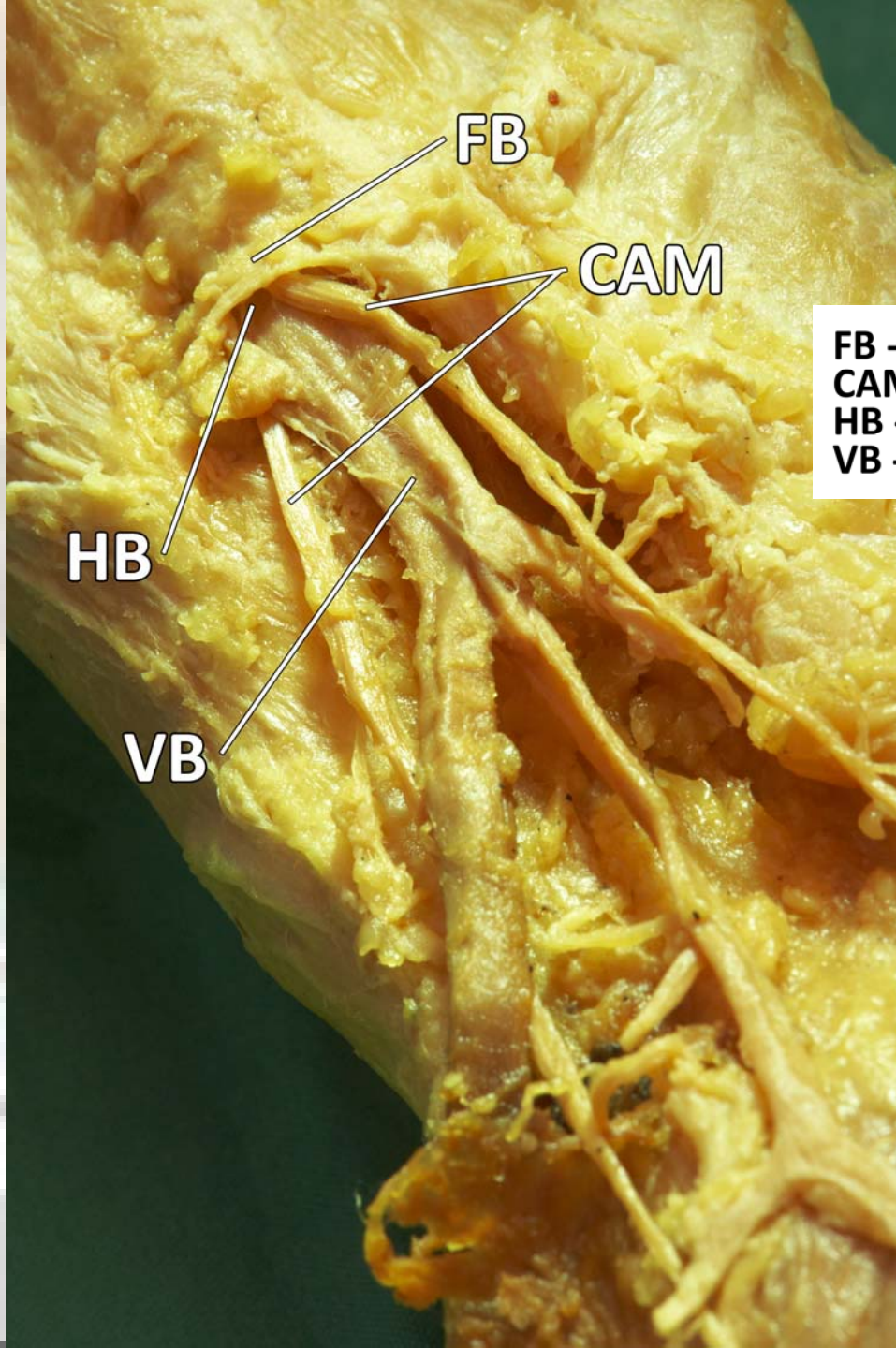
n. cutaneus antebrachii  
medialis





# SULCUS BICIPITALIS MEDIALIS ET LATERALIS





**FB**

**CAM**

**HB**

**VB**

**FB - FASCIA BRACHI**  
**CAM - N. CUTANEUS ANTEBRACHII MEDIALIS**  
**HB - HIATUS BASILICUS**  
**VB - V. BASILICA**

# FOSSA CUBITALIS

## (cubital fossa, regio cubiti anterior)

### BORDERS:

#### PROXIMAL:

origin of tendo m. bicipitis brachii

#### LATERAL:

m. brachioradialis

#### MEDIAL:

m. pronator teres

#### FLOOR:

m. brachialis

### CONTENT:

a. brachialis and its branches

n. medianus

n. radialis and its branches

v. basilica

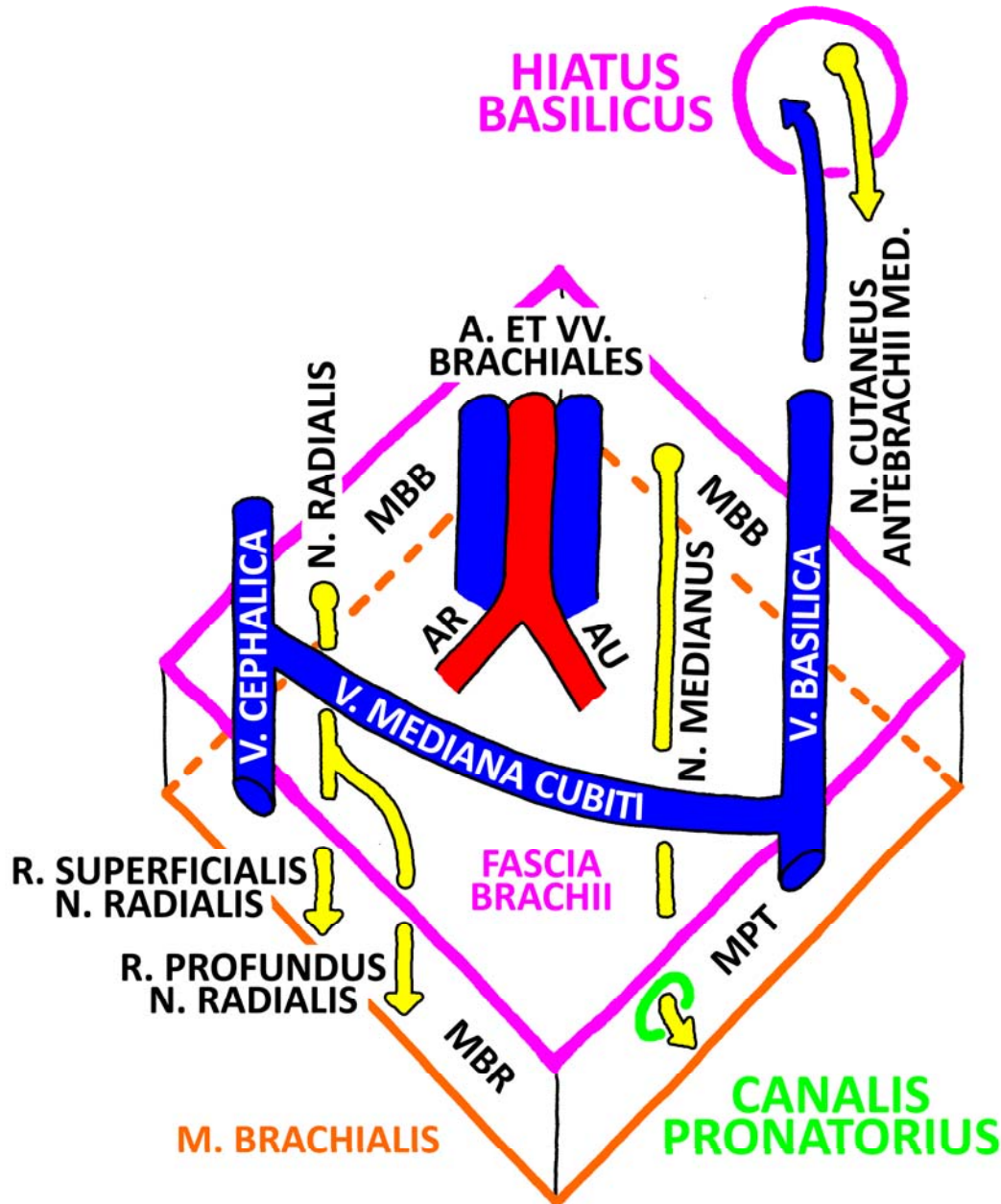
v. cephalica

v. mediana cubiti

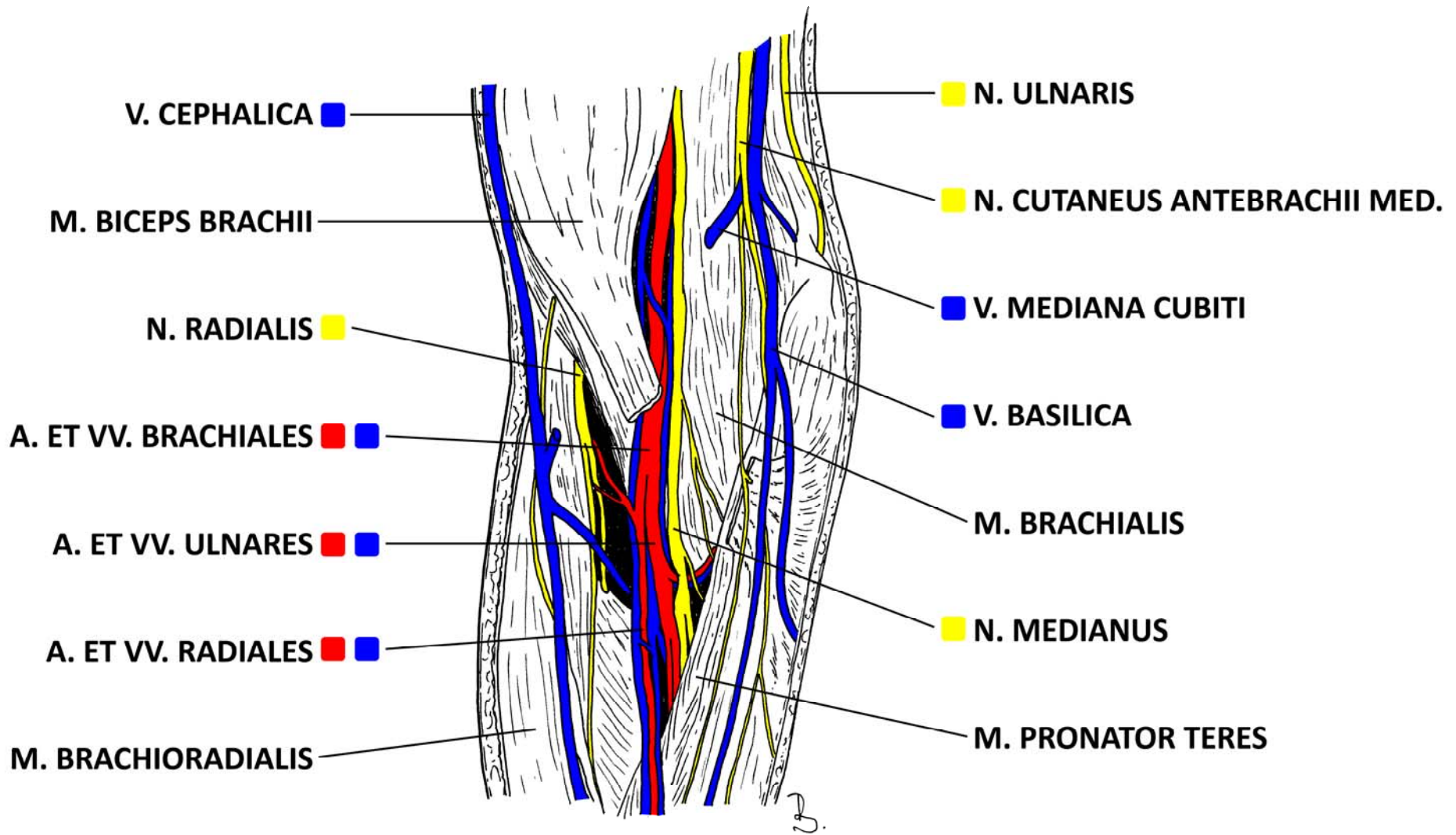


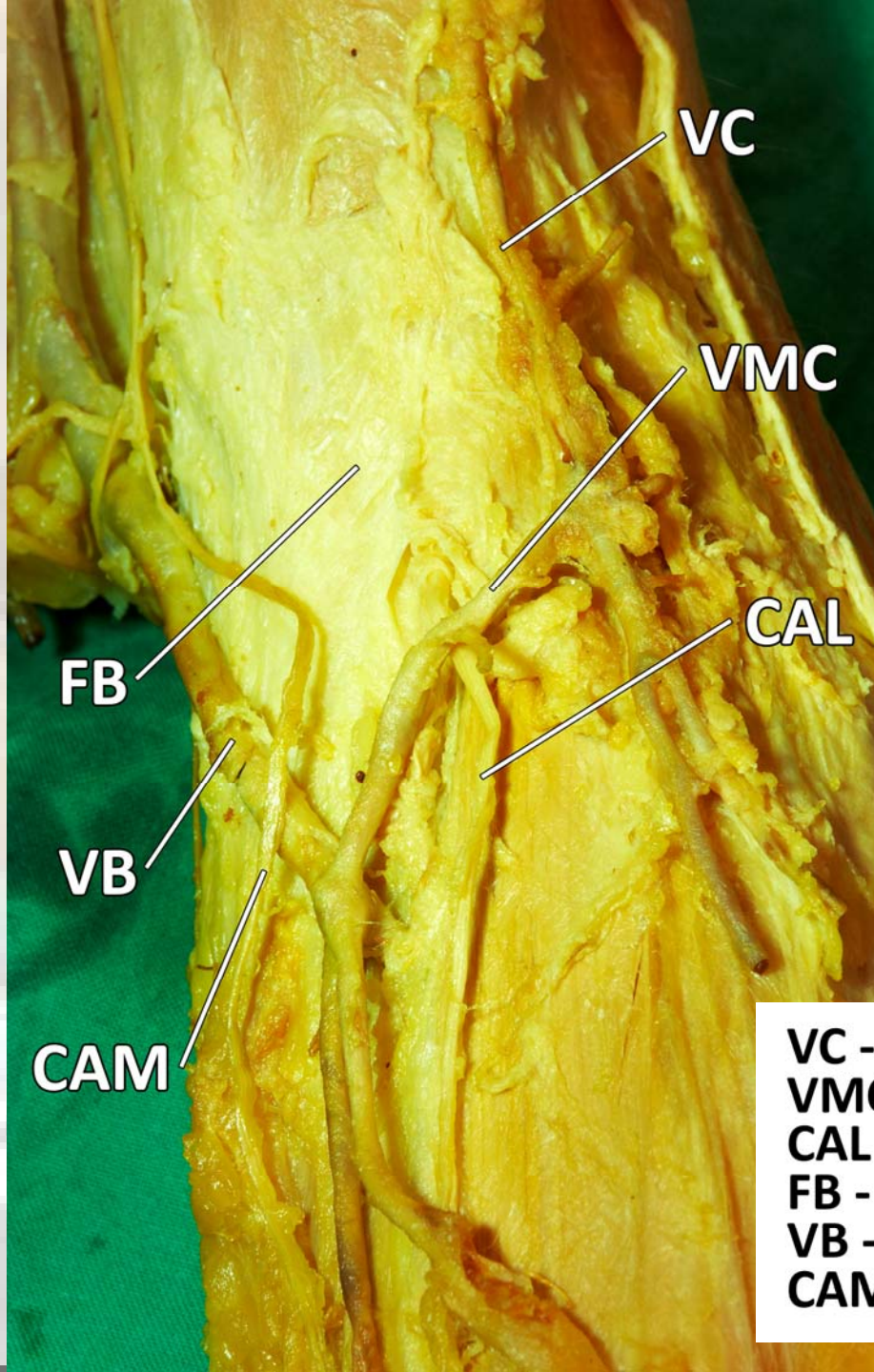


# FOSSA CUBITALIS DX.



MBB = M. BICEPS BRACHII  
 MBR = M. BRACHIORADIALIS  
 MPT = M. PRONATOR TERES  
 AR = A. RADIALIS  
 AU = A. ULNARIS





VC

VMC

CAL

FB

VB

CAM

**VC - V. CEPHALICA**  
**VMC - V. MEDIANA CUBITI**  
**CAL - N. CUTANEUS ANTEBRACHII LAT.**  
**FB - FASCIA BRACHII**  
**VB - V. BASILICA**  
**CAM - N. CUTANEUS ANTEBRACHII MED.**



# CANALIS PRONATORIIUS

## BORDERS:

between 2 heads of m. pronator teres  
and futher between 2 heads of m.  
flexor digitorum superficialis

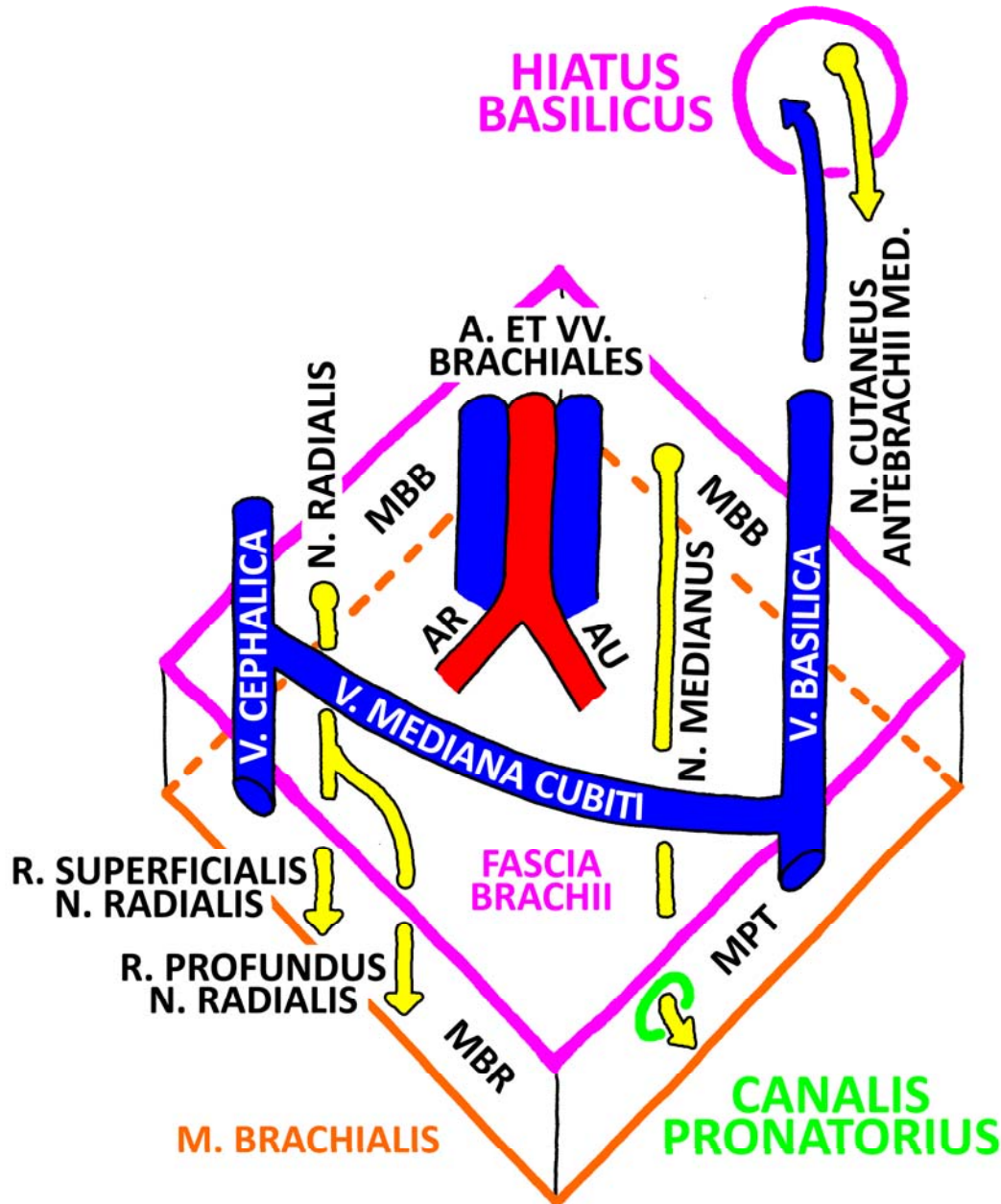
## CONTENT:

n. medianus

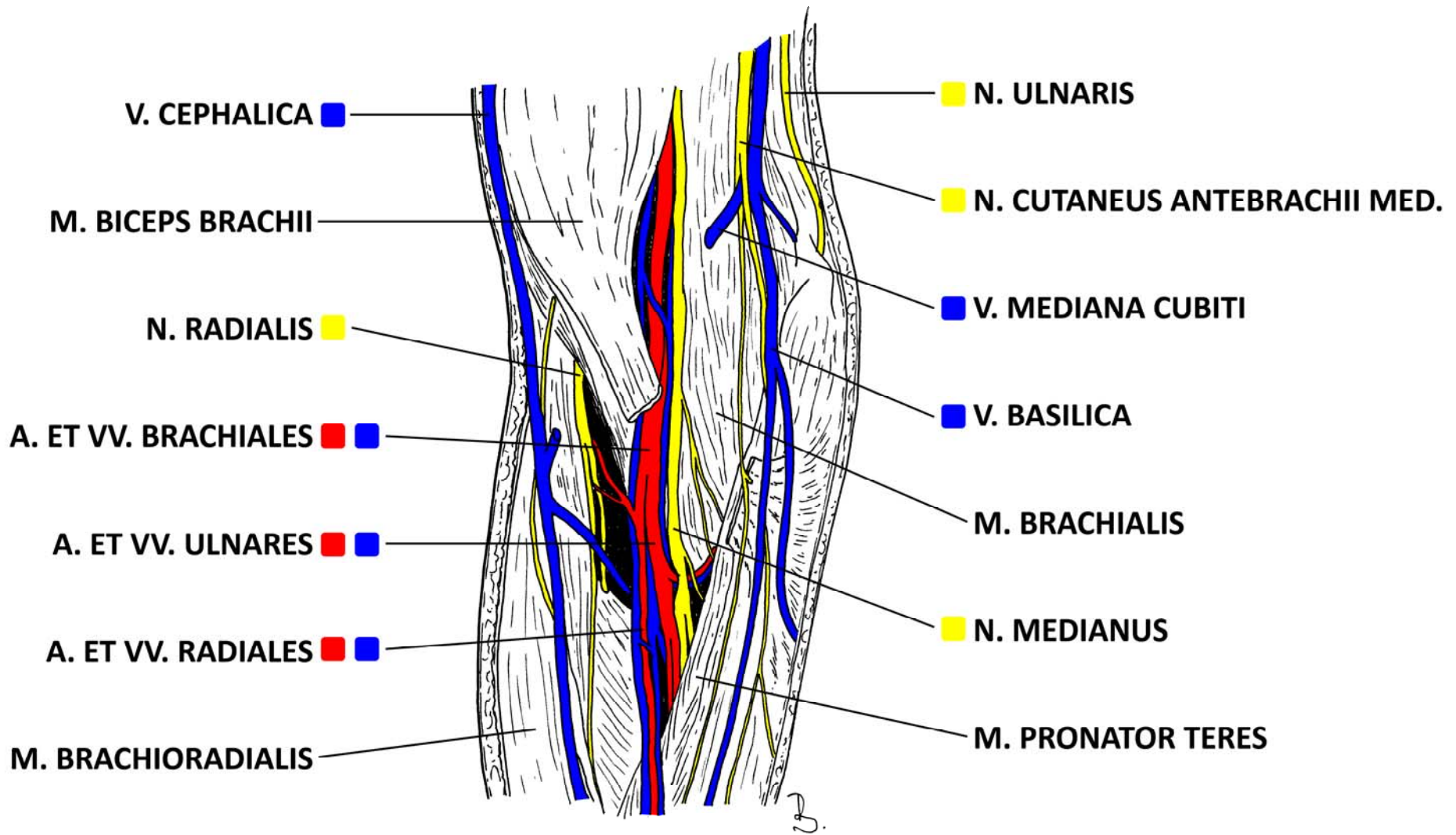




# FOSSA CUBITALIS DX.



MBB = M. BICEPS BRACHII  
 MBR = M. BRACHIORADIALIS  
 MPT = M. PRONATOR TERES  
 AR = A. RADIALIS  
 AU = A. ULNARIS



# CANALIS CUBITALIS

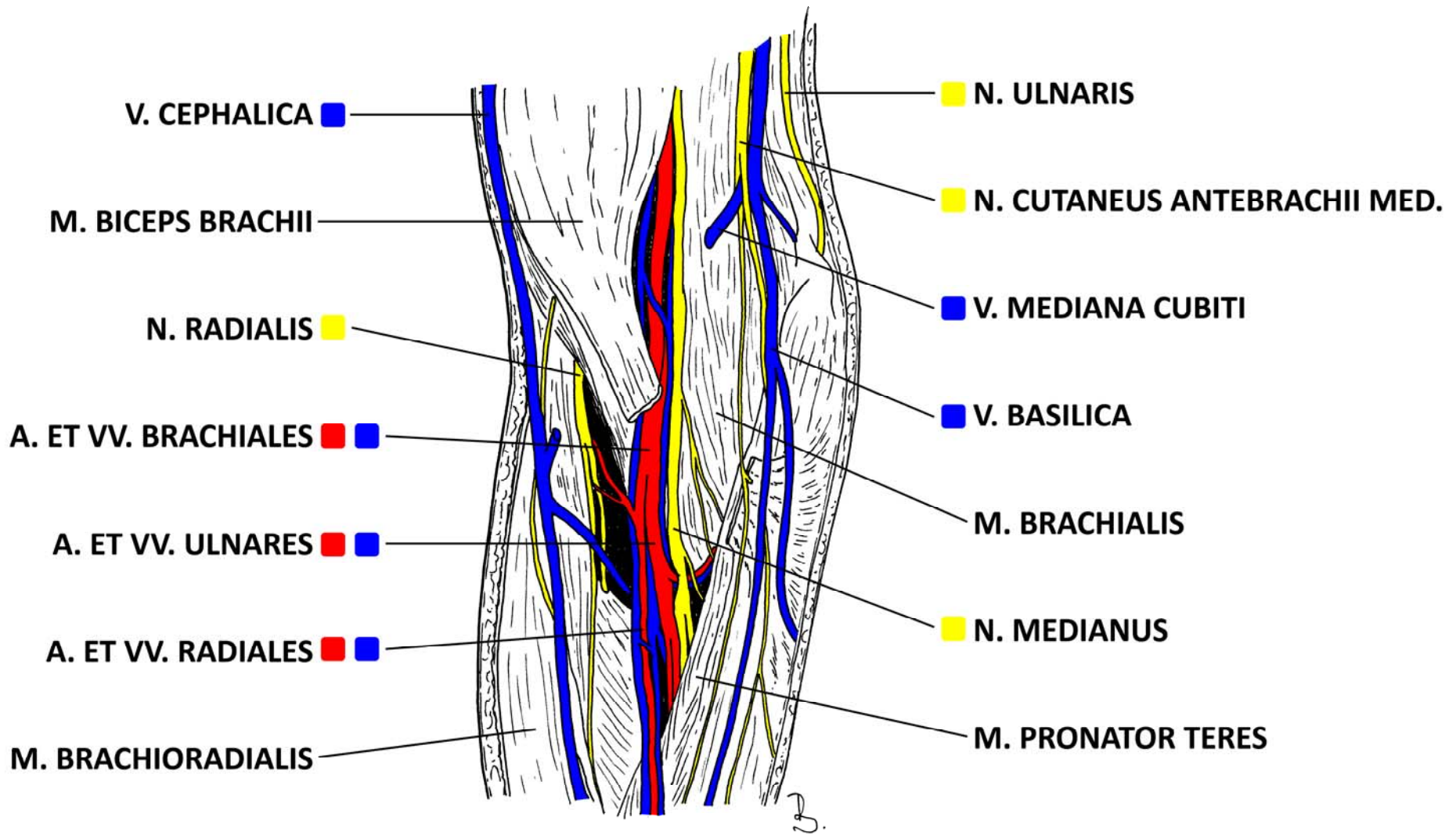
BORDERS:

between 2 heads of  
m. flexor carpi ulnaris

CONTENT:

n. ulnaris







# CANALIS SUPINATORII

## BORDERS:

m. supinator (2 layers separated by n. radialis)

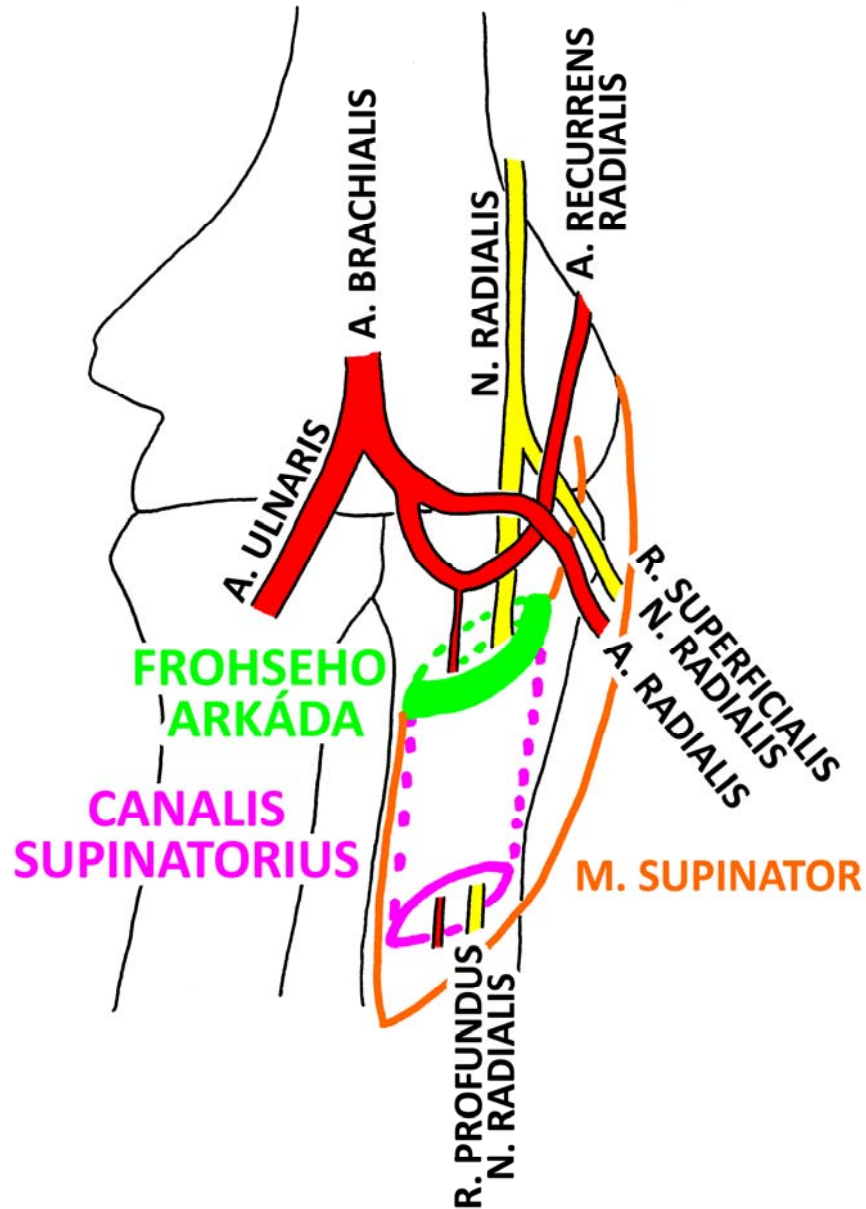
## CONTENT:

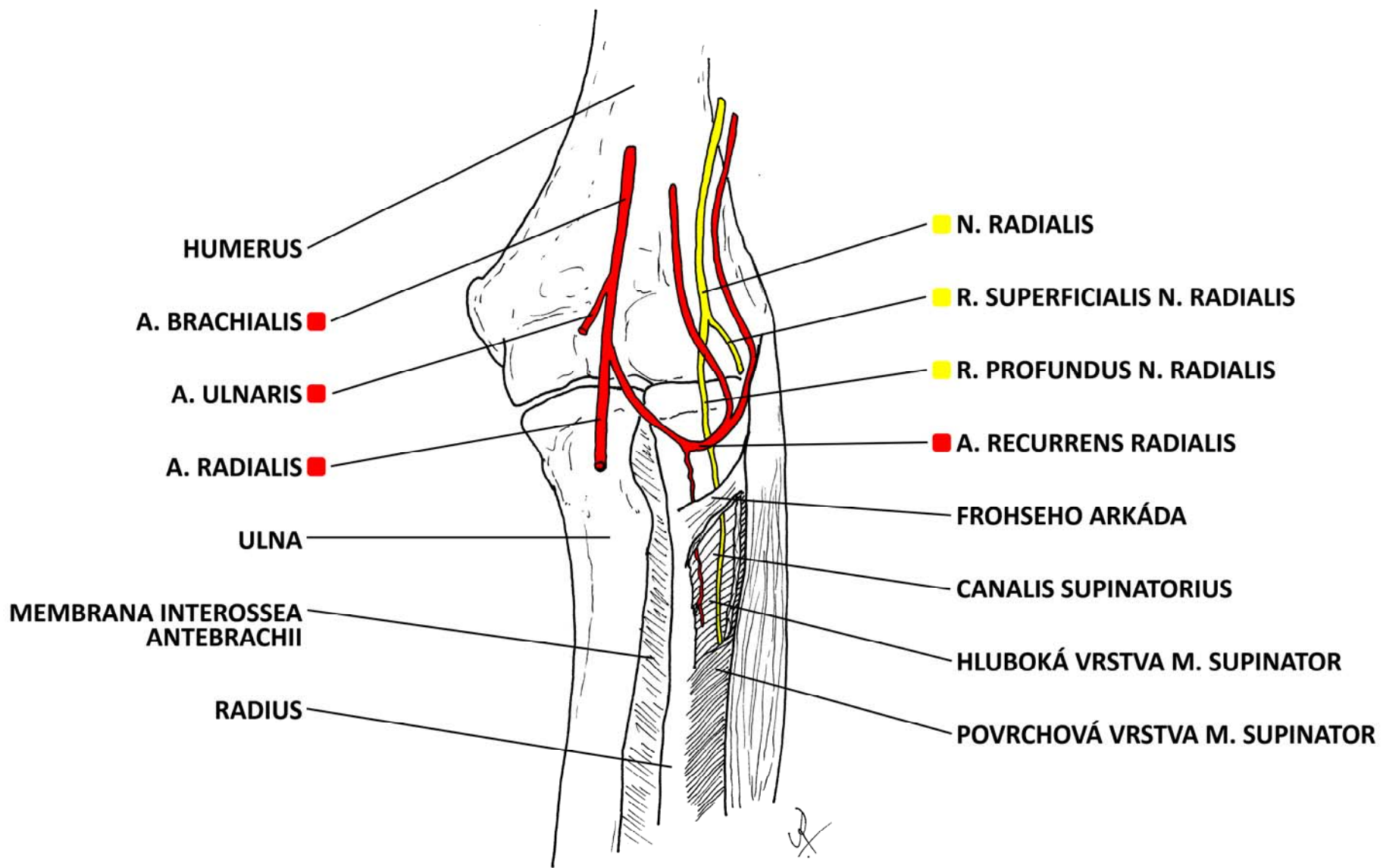
r. profundus n. radialis

branch of a. recurrens radialis



# CANALIS SUPINATORIUS SIN. + FROHSEHO ARKÁDA





HUMERUS

A. BRACHIALIS

A. ULNARIS

A. RADIALIS

ULNA

MEMBRANA INTEROSSEA ANTEBRACHII

RADIUS

N. RADIALIS

R. SUPERFICIALIS N. RADIALIS

R. PROFUNDUS N. RADIALIS

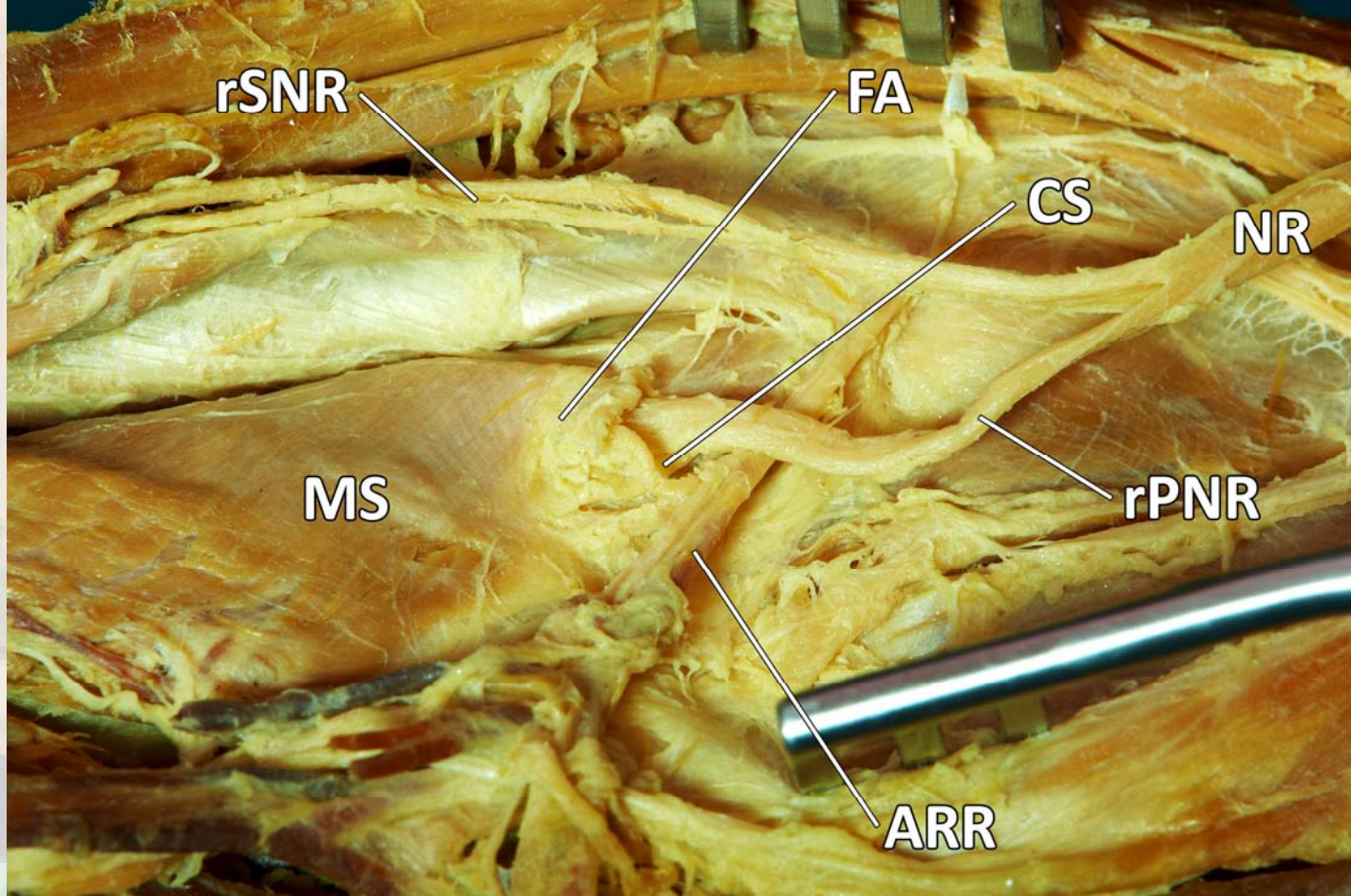
A. RECURRENS RADIALIS

FROHSEHO ARKÁDA

CANALIS SUPINATORII

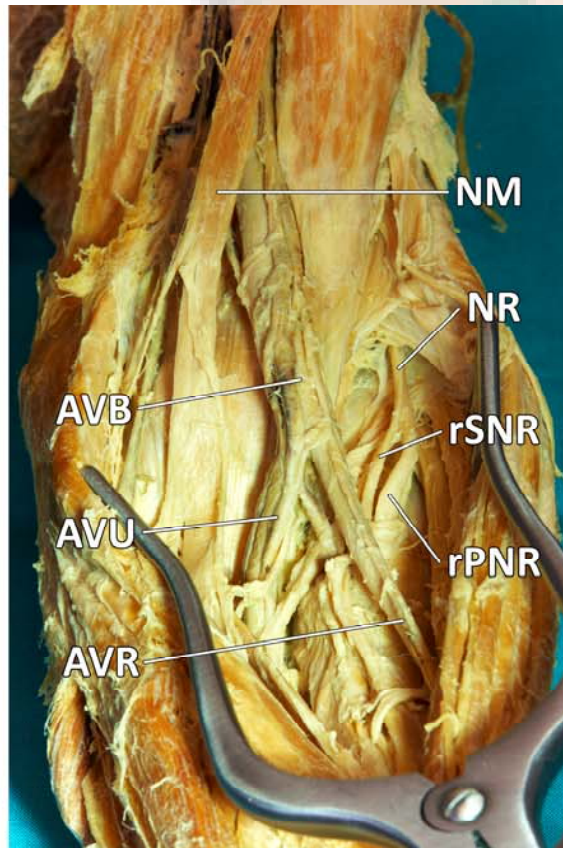
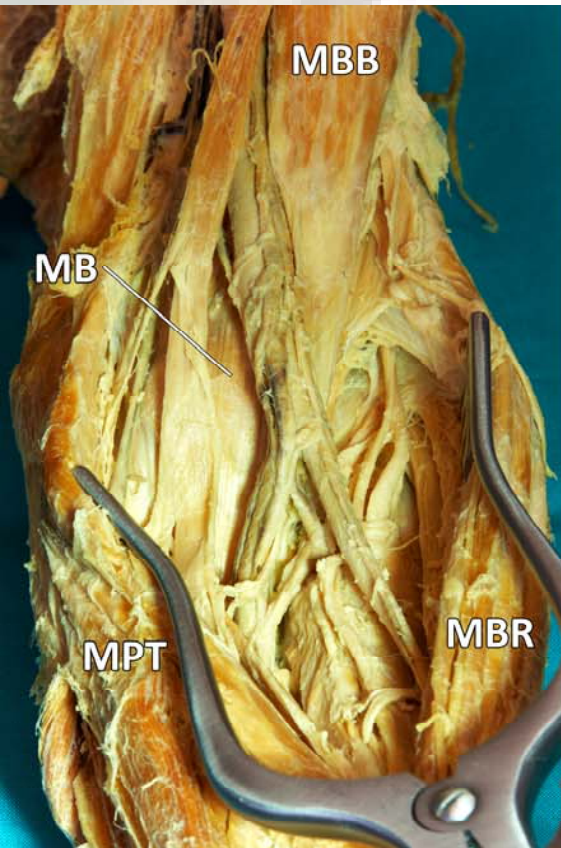
HLUBOKÁ VRSTVA M. SUPINATOR

POVRCHOVÁ VRSTVA M. SUPINATOR



**rSNR - R. SUPERFICIALIS N. RADIALIS**  
**FA - FROHSEHO ARKÁDA**  
**CS - CANALIS SUPINATORIIUS**  
**NR - N. RADIALIS**  
**rPNR - R. PROFUNDUS N. RADIALIS**  
**ARR - A. RECURRENS RADIALIS**  
**MS - M. SUPINATOR**





**MBB - M. BICEPS BRACHII**  
**MB - M. BRACHIALIS**  
**MPT - M. PRONATOR TERES**  
**MBR - M. BRACHIORADIALIS**

**NM - N. MEDIANUS**  
**NR - N. RADIALIS**  
**rSNR - R. SUPERFICIALIS N. RADIALIS**  
**rPNR - R. PROFUNDUS N. RADIALIS**  
**AVB - A. ET VV. BRACHIALES**  
**AVU - A. ET VV. ULNAIRES**  
**AVR - A. ET VV. RADIALES**



# FOVEOLA RADIALIS ("la tabatiere")

## BORDERS:

### PROXIMAL:

retinaculum musculorum extensorum

### VENTRAL:

tendo m. extensoris pollicis brevis et  
tendo m. abductoris pollicis longus

### DORSAL:

tendo m. ext. pollicis longus

## CONTENT:

### *deep layer:*

**a. radialis** (and its branch

**r. carpalis dorsalis**

supplying

**rete carpi dorsale**)

**vv. radiales**

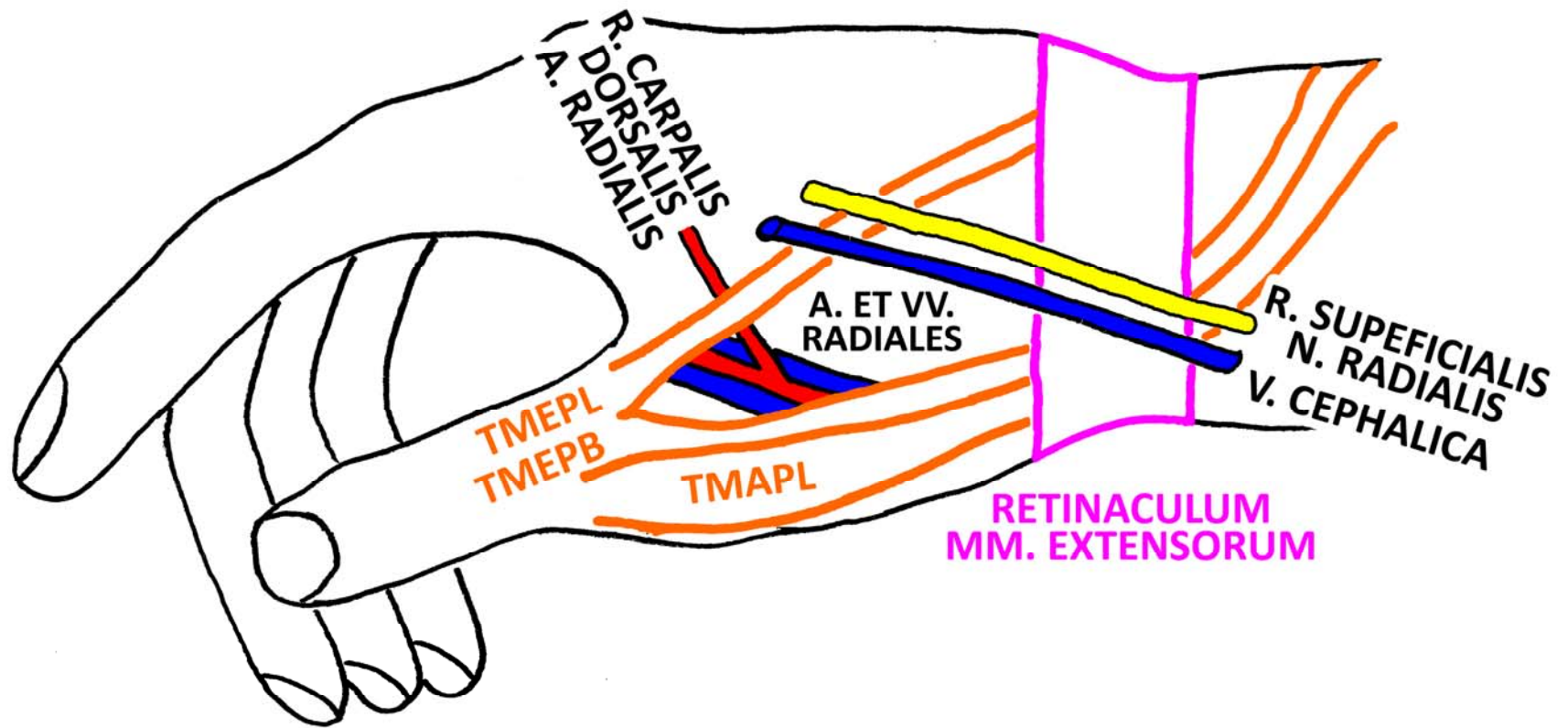
### *superficial layer:*

**v. cephalica**

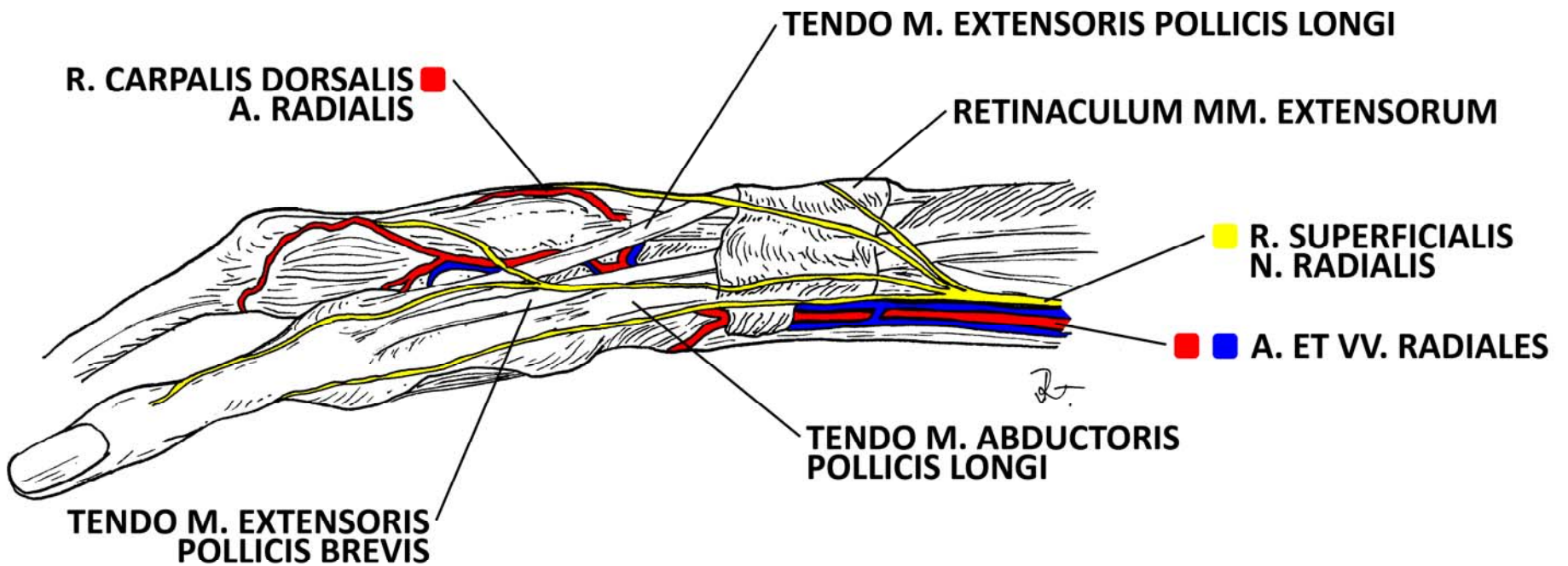
**r. superficialis n. radialis**



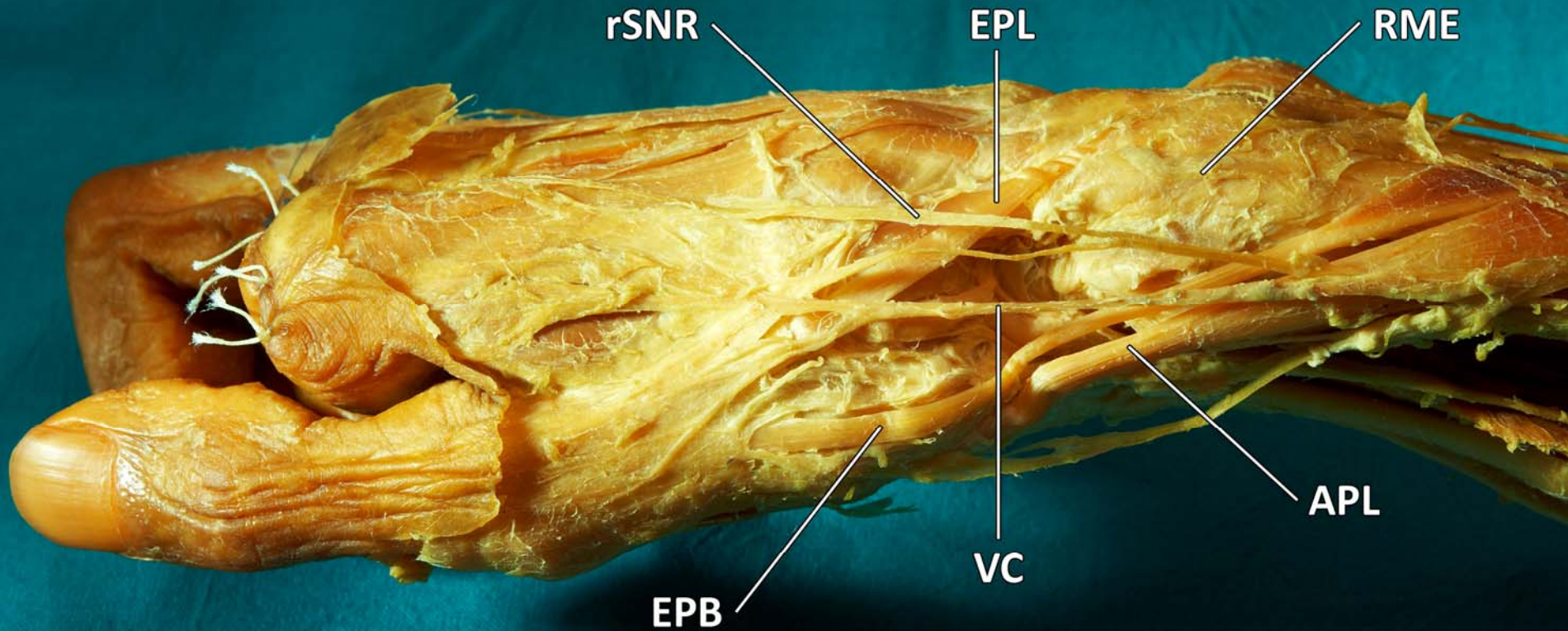
# FOVEOLA RADIALIS DX.



**TMEPL = TENDO M. EXTENSORIS POLLICIS LONGI**  
**TMEPB = TENDO M. EXTENSORIS POLLICIS BREVIS**  
**TMAPL = TENDO M. ABDUCTORIS POLLICIS LONGI**

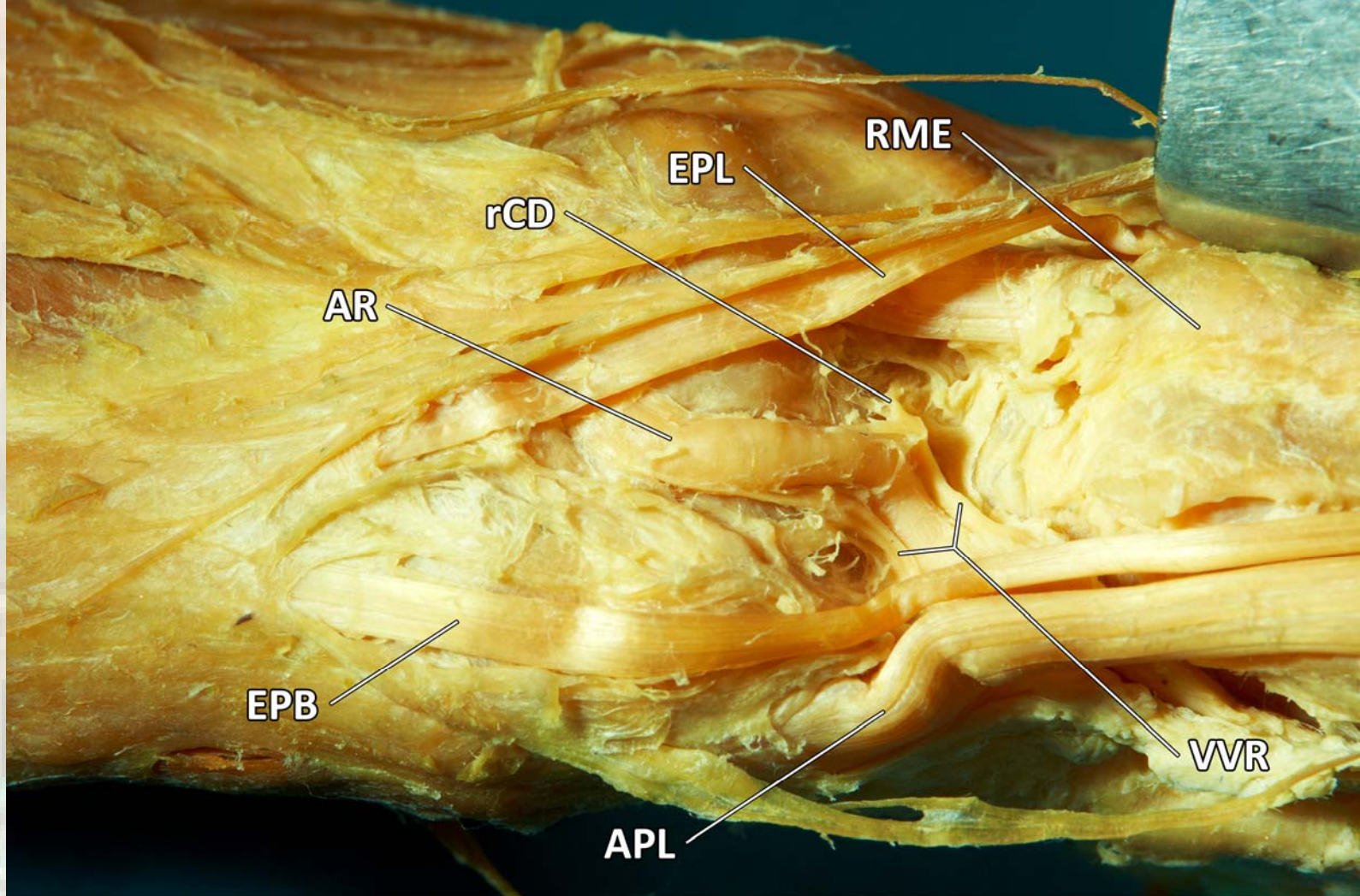






**rSNR - R. SUPERFICIALIS N. RADIALIS**  
**EPL - TENDO M. EXTENSORIS POLLICIS LONGI**  
**RME - RETINACULUM MM. EXTENSORUM**  
**APL - TENDO M. ABDUCTORIS POLLICIS LONGI**  
**VC - V. CEPHALICA**  
**EPB - TENDO M. EXTENSORIS POLLICIS BREVIS**





**AR - A. RADIALIS**  
**rCD - R. CARPALIS DORSALIS A. RADIALIS**  
**EPL - TENDO M. EXTENSORIS POLLICIS LONGI**  
**RME - RETINACULUM MM. EXTENSORUM**  
**VVR - VV. RADIALES**  
**APL - TENDO M. ABDUCTORIS POLLICIS LONGI**  
**EPB - TENDO M. EXTENSORIS POLLICIS BREVIS**



# PARONA'S SPACE

## BORDERS:

### VENTRAL:

tendons of flexors,  
vessles and nerves

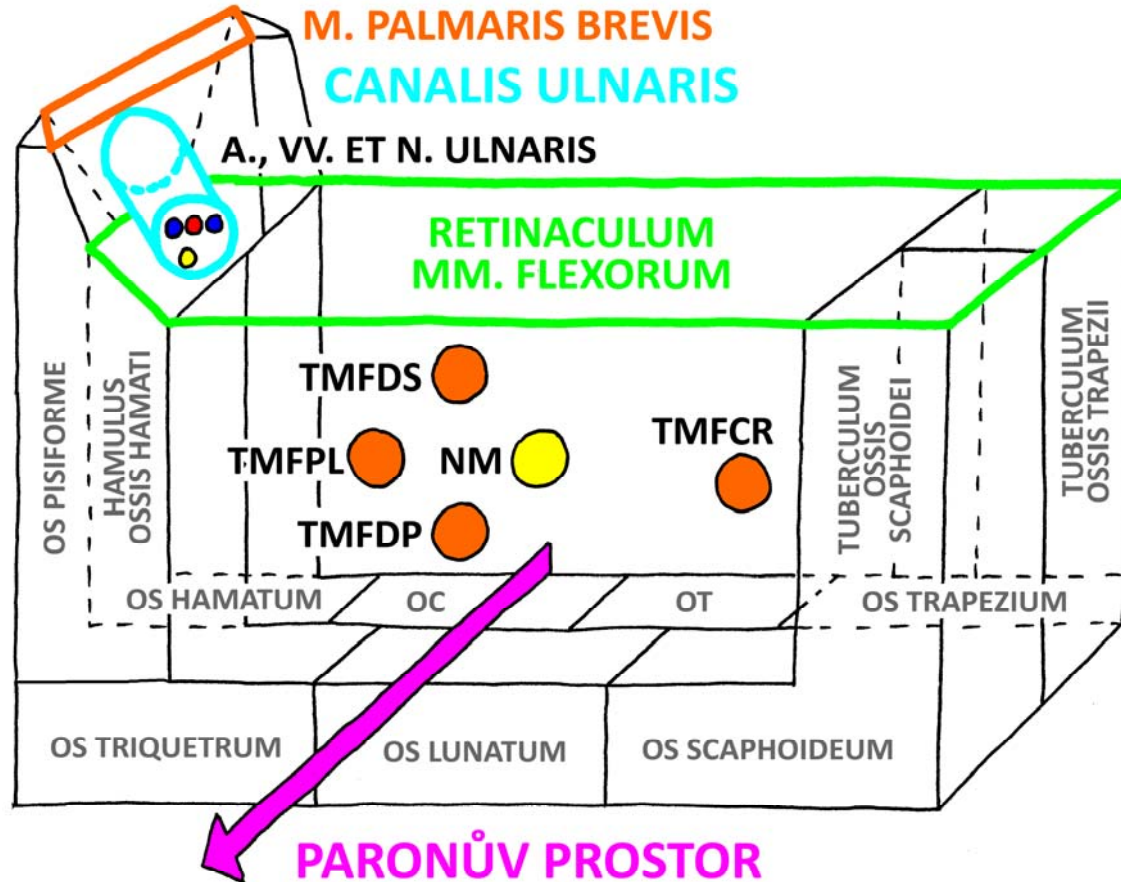
### DORSAL:

m. pronator quadratus

## CONTENT:



# CANALIS CARPI DX.



- TMFDS = TENDO M. FLEXORIS DIGITORUM SUPERFICIALIS
- TMFPL = TENDO M. FLEXORIS POLLICIS LONGI
- NM = N. MEDIANUS
- TMFDP = TENDO M. FLEXORIS DIGITORUM PROFUNDI
- TMFCR = TENDO M. FLEXORIS CARPI RADIALIS
- OC = OS CAPITATUM
- OT = OS TRAPEZOIDEUM

# CANALIS CARPI (carpal tunnel)

## BORDERS:

DORSAL, RADIAL, ULNAR:  
fossa carpi

PALMAR:  
retinaculum musculorum flexorum

## CONTENT:

*ulnar section:*

*n. medianus*

*tendo m. flexoris pollicis longi*

*tendo m. flexoris digitorum superficialis*

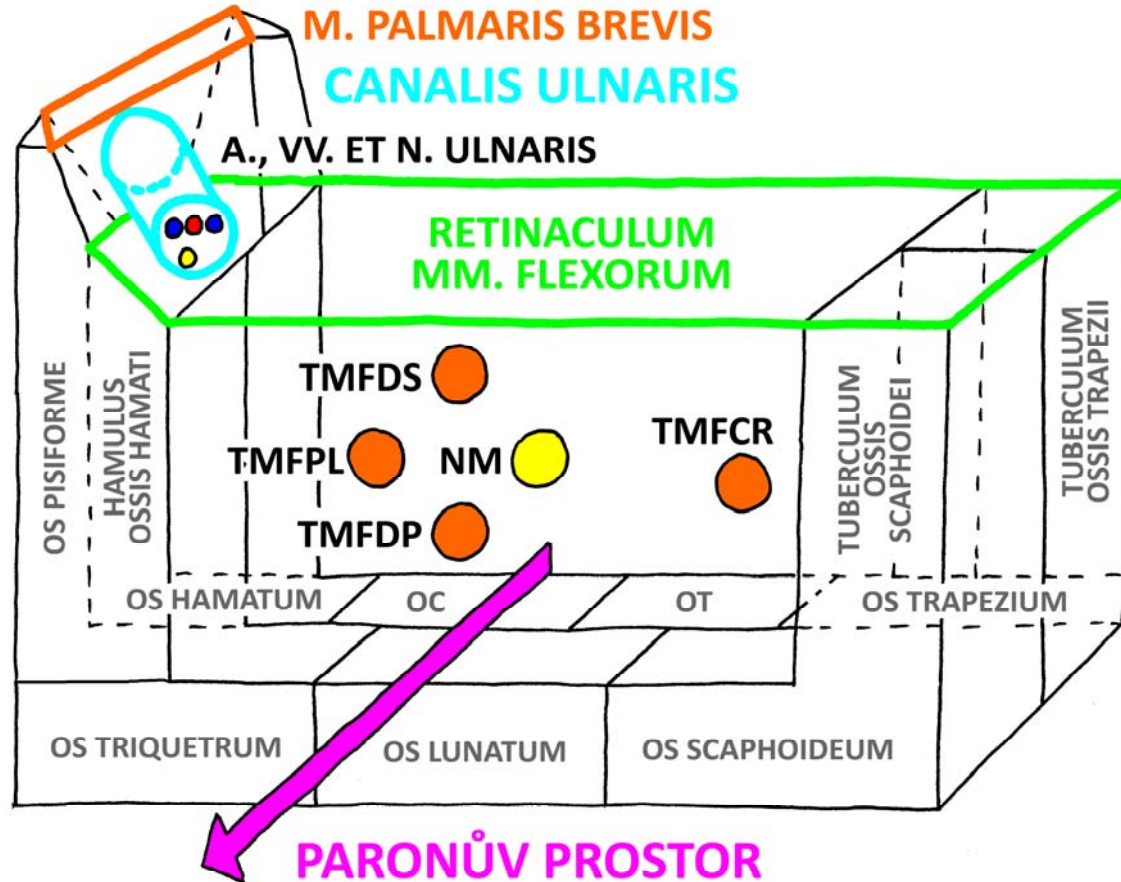
*tendo m. flexoris digitorum profundus*

*radial section:*

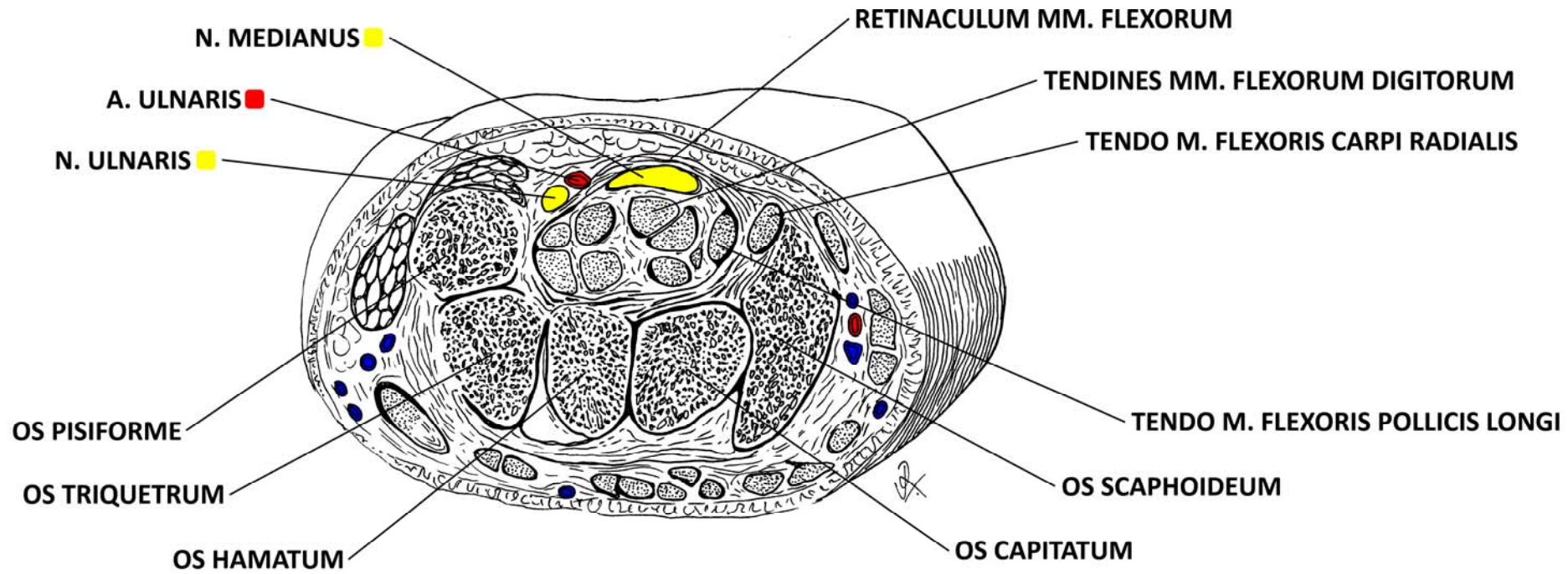
*tendo m. flexoris carpi radialis*



# CANALIS CARPI DX.



- TMFDS = TENDO M. FLEXORIS DIGITORUM SUPERFICIALIS
- TMFPL = TENDO M. FLEXORIS POLLICIS LONGI
- NM = N. MEDIANUS
- TMFDP = TENDO M. FLEXORIS DIGITORUM PROFUNDI
- TMFCR = TENDO M. FLEXORIS CARPI RADIALIS
- OC = OS CAPITATUM
- OT = OS TRAPEZOIDEUM





# CANALIS ULNARIS (Ulnar canal, *Guyon's canal*)

## BORDERS:

groove between os pisiforme and  
hamulus ossis hamati

## FLOOR + DORSAL:

retinaculum musculorum flexorum

## PALMAR:

m. palmaris brevis

## CONTENT:

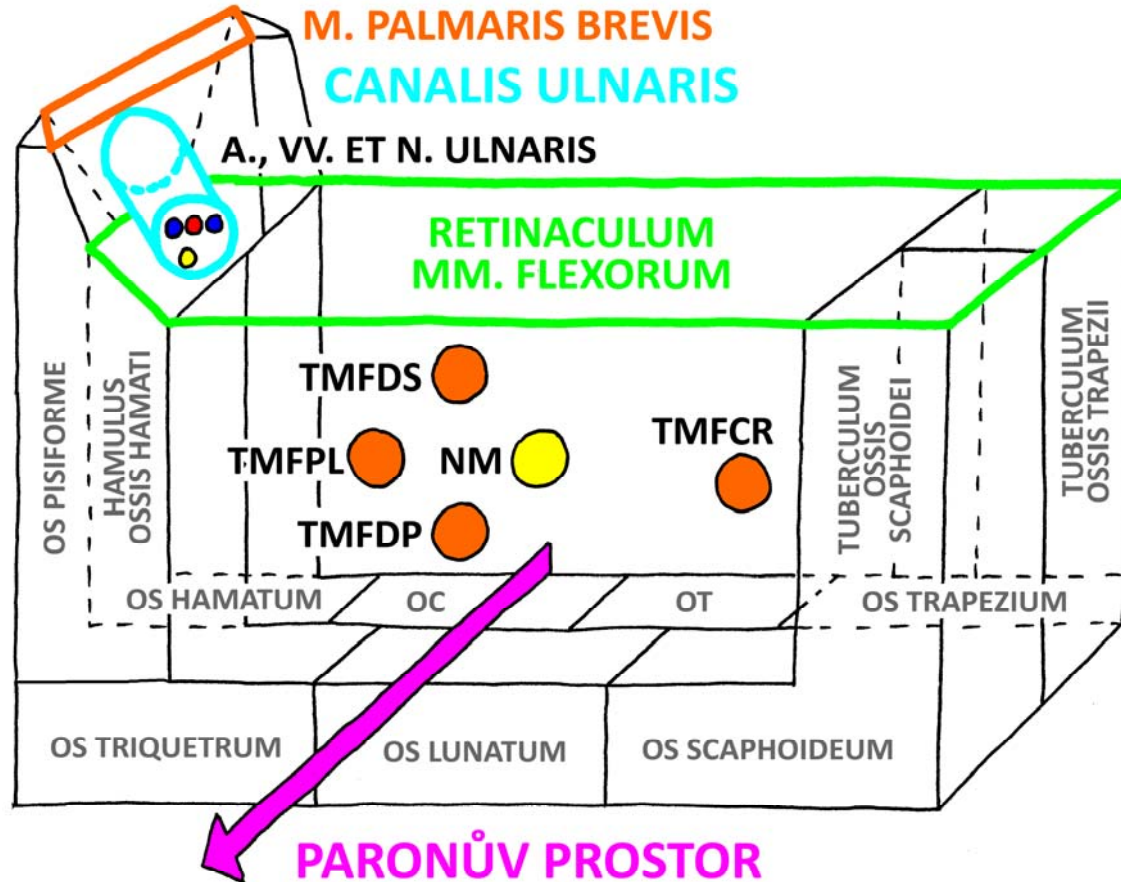
a. ulnaris

vv. ulnares

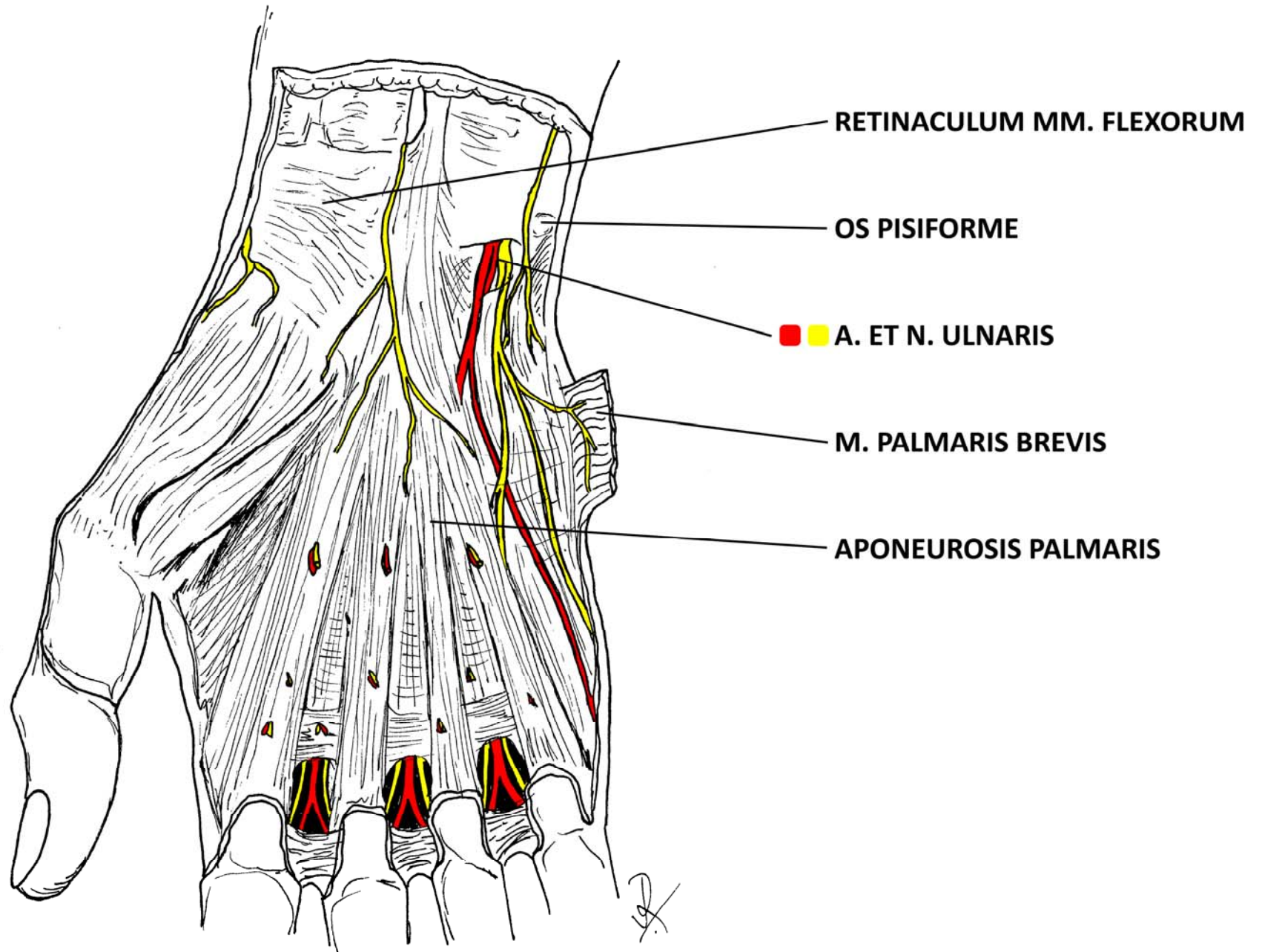
n. ulnaris



# CANALIS CARPI DX.



- TMFDS = TENDO M. FLEXORIS DIGITORUM SUPERFICIALIS
- TMFPL = TENDO M. FLEXORIS POLLICIS LONGI
- NM = N. MEDIANUS
- TMFDP = TENDO M. FLEXORIS DIGITORUM PROFUNDI
- TMFCR = TENDO M. FLEXORIS CARPI RADIALIS
- OC = OS CAPITATUM
- OT = OS TRAPEZOIDEUM



# GUIOT'S SPACE

## BORDERS:

intermuscular slot between:

## PALMAR:

caput transversum m. adductoris pollicis

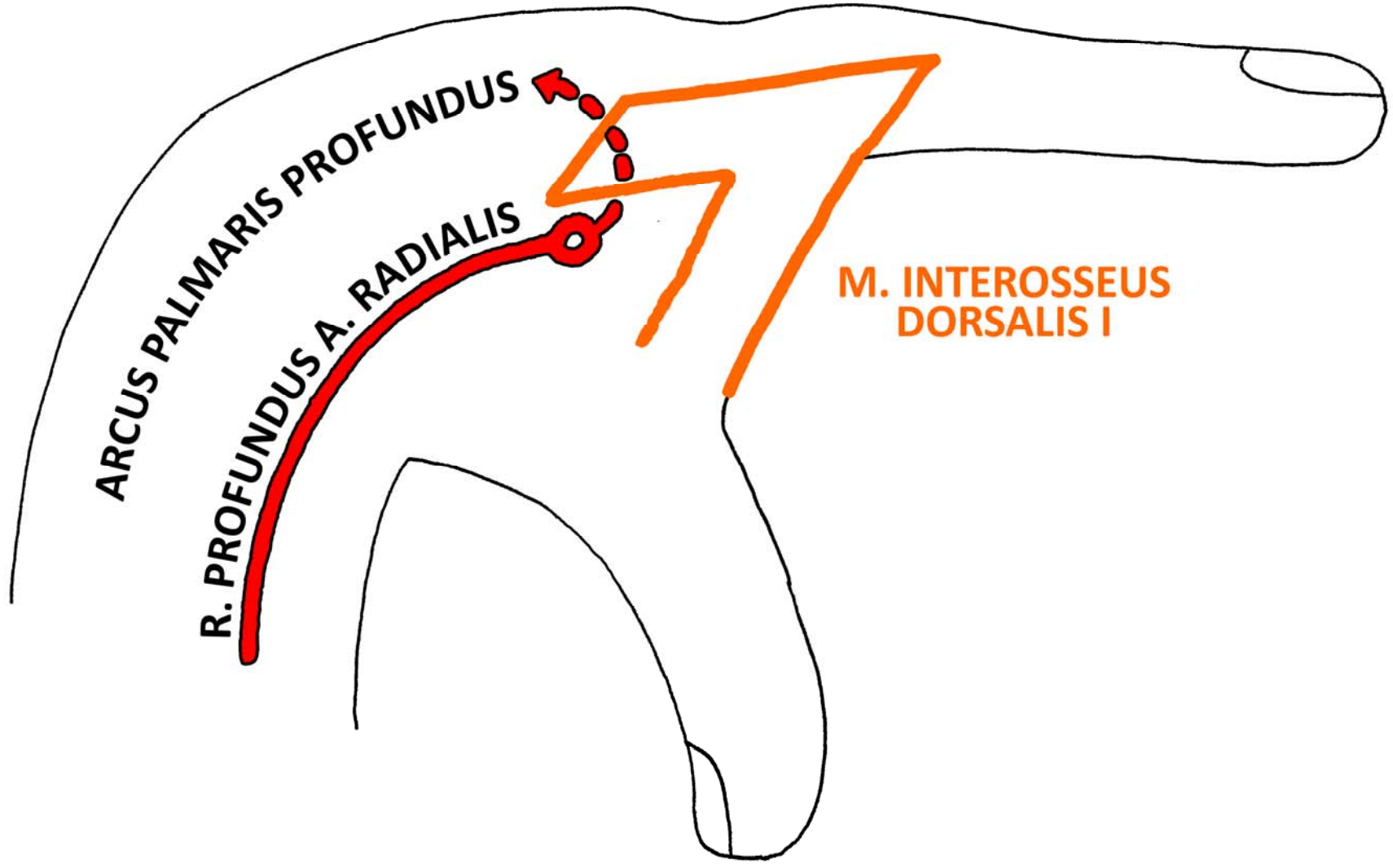
## DORSAL:

m. interosseus dorsalis primus

## CONTENT:

r. profundus a. radialis  
(supplying the arcus palmaris profundus)





ARCUS PALMARIS PROFUNDUS

R. PROFUNDUS A. RADIALIS

M. INTEROSSEUS DORSALIS I