

GlazOn Project Sheet

What is GlazOn? GlazOn was specially formulated to work with our StazOn ink line to keep these inks from turning “muddy” when layering colors on top of each other. GlazOn can be used as a medium for collage work as well.

How to use GlazOn In general, apply StazOn ink to your project, then apply a thin layer of GlazOn. GlazOn air dries quickly, but a heat gun can be used as well. Then apply your next color of StazOn ink. Allow each layer of ink to dry before applying your layer of GlazOn. A thin layer of GlazOn works the same (or even better!) than a thick layer- and doesn't take as long to dry either!

Basic tools for projects GlazOn, Tsukineko StazOn inks, Tsukineko Squeegee (mini or regular size), Tsukineko Fantastix, Tsukineko Sponge Daubers

GlazOn Basics



Applying GlazOn

GlazOn only needs to be applied in thin layers. Add a small amount of GlazOn to your project's surface, then use a Squeegee (regular size shown) to spread the GlazOn evenly across your project before allowing to dry.



Making a “Clean Slate”

Want to make those StazOn colors jump out in your projects? Begin with a layer of StazOn Opaque Cotton White. Apply to your project's surface with a dauber, allow to dry, then add your layer of GlazOn before starting.

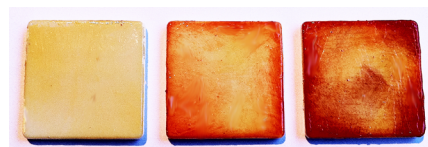


Spot Color

Use one of Tsukineko's Fantastix for more detailed coloring or highlights.

Sparkling Touches

Ultra fine glitter, microbeads and other “bling” can be added with GlazOn!



Building Color to Projects

Apply StazOn Mustard with dauber, dry, then a layer of GlazOn, dry (left).

Next add StazOn Pumpkin, dry, GlazOn, dry (middle). Last layer of StazOn Rusty Brown, dry, add GlazOn.



Embellishing Projects

Once you have added your base colors you can try a variety of techniques to

embellish your projects using GlazOn. Add rub-ons to your project (left), then seal with GlazOn. Using a Fantastix, color the “G” with StazOn Royal Purple. Collage elements (middle) can quickly be added to your work as well- apply GlazOn to the back of your element, add it to your project, and then seal with GlazOn. Rubber stamp onto your project (right) with StazOn Jet Black and then seal with GlazOn. Endless possibilities!

GlazOn Tips:

- Always put the cap on your bottle of GlazOn when not in use
- If heat setting your projects, remember that you are also “heating” your project's surface- metal and glass become hot when heated, acrylic can warp, etc.
- GlazOn air dries perfectly
- General rule- add your StazOn color, allow to dry, add a layer of GlazOn, allow to dry, repeat for each color.
- Don't forget to seal your completed project with GlazOn

INKd is brought to you by TSUKINEKO for ideas, tips and other inkings. Visit WWW.TSUKINEKO.COM for more projects and inspiration!