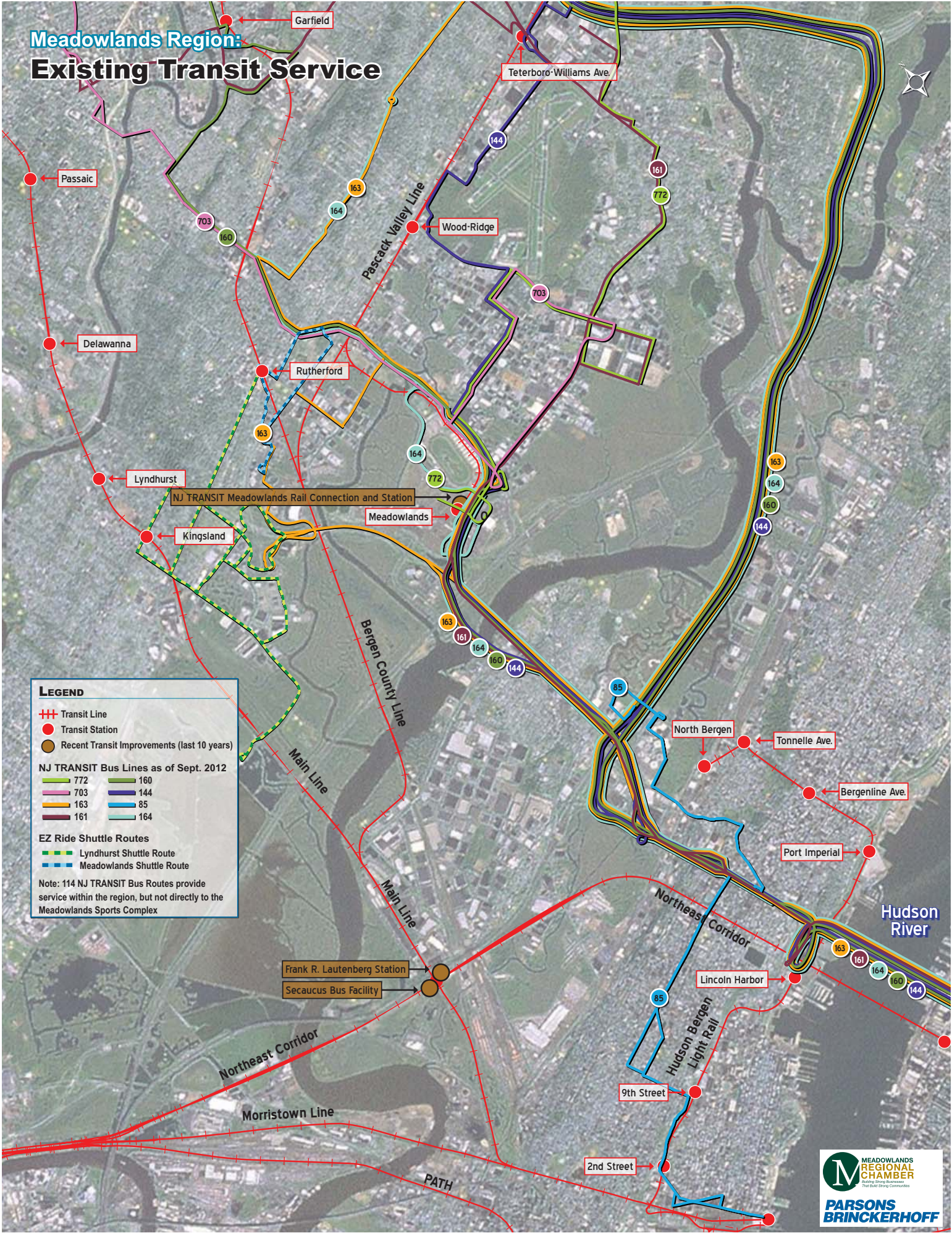


# Meadowlands Region: Existing Transit Service



**LEGEND**

- +++ Transit Line
- Transit Station
- Recent Transit Improvements (last 10 years)

**NJ TRANSIT Bus Lines as of Sept. 2012**

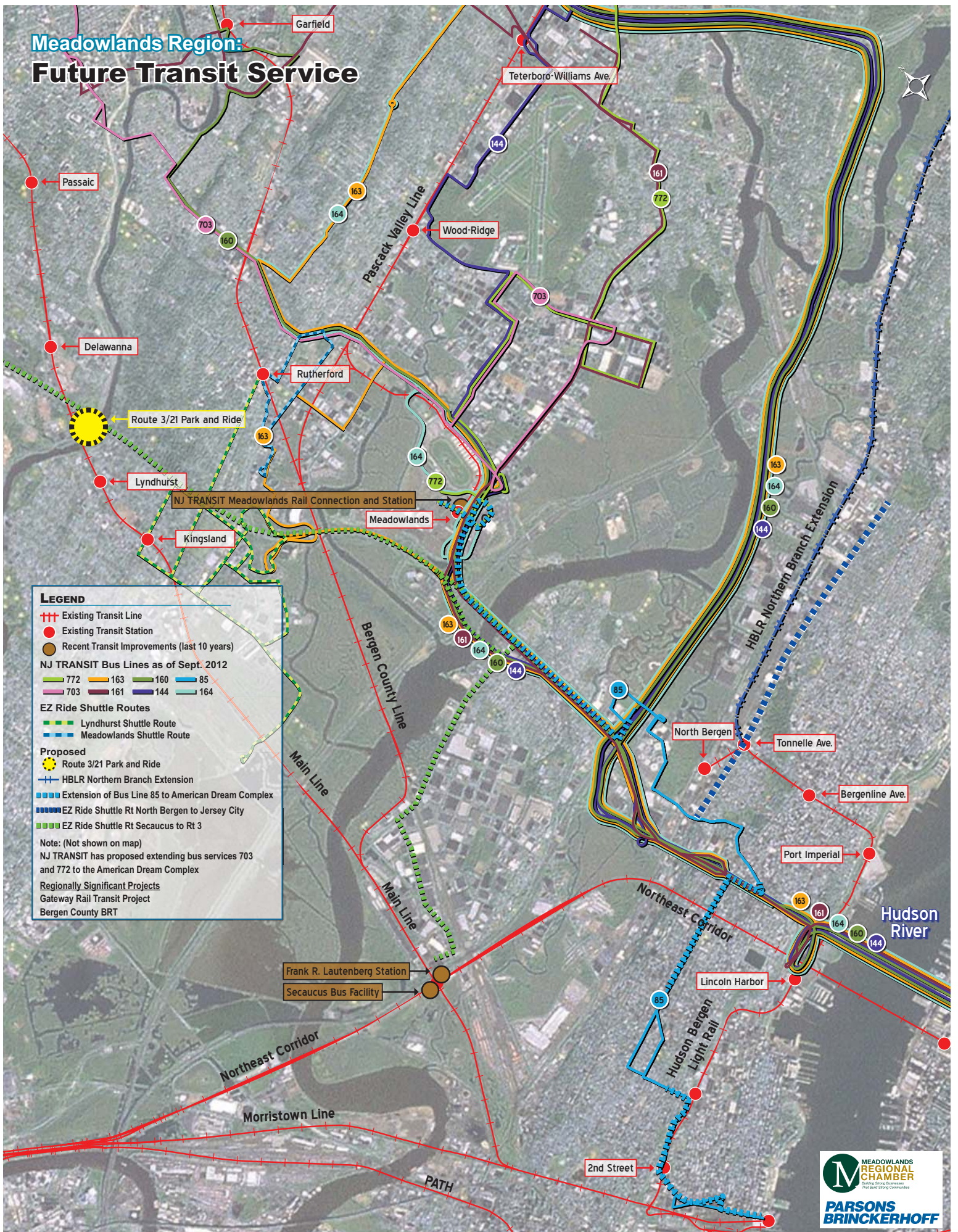
772	160
703	144
163	85
161	164

**EZ Ride Shuttle Routes**

- Lyndhurst Shuttle Route
- Meadowlands Shuttle Route

Note: 114 NJ TRANSIT Bus Routes provide service within the region, but not directly to the Meadowlands Sports Complex

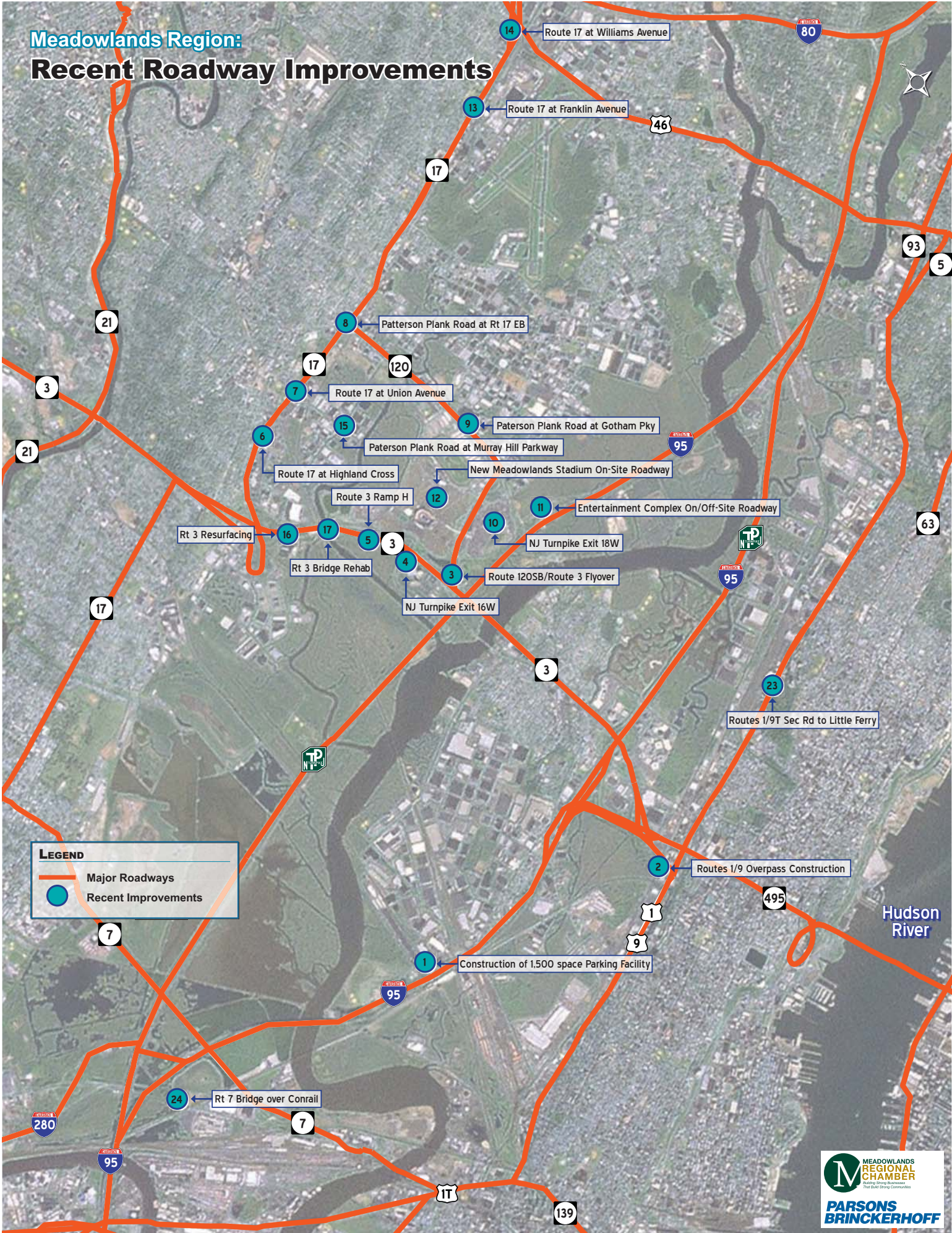
# Meadowlands Region: Future Transit Service



## LEGEND

- +++ Existing Transit Line
- Existing Transit Station
- Recent Transit Improvements (last 10 years)
- NJ TRANSIT Bus Lines as of Sept. 2012**
- 772 163 160 85
- 703 161 144 164
- EZ Ride Shuttle Routes**
- Lyndhurst Shuttle Route
- Meadowlands Shuttle Route
- Proposed**
- Route 3/21 Park and Ride
- HBLR Northern Branch Extension
- Extension of Bus Line 85 to American Dream Complex
- EZ Ride Shuttle Rt North Bergen to Jersey City
- EZ Ride Shuttle Rt Secaucus to Rt 3
- Note: (Not shown on map)  
NJ TRANSIT has proposed extending bus services 703 and 772 to the American Dream Complex
- Regionally Significant Projects**
- Gateway Rail Transit Project
- Bergen County BRT

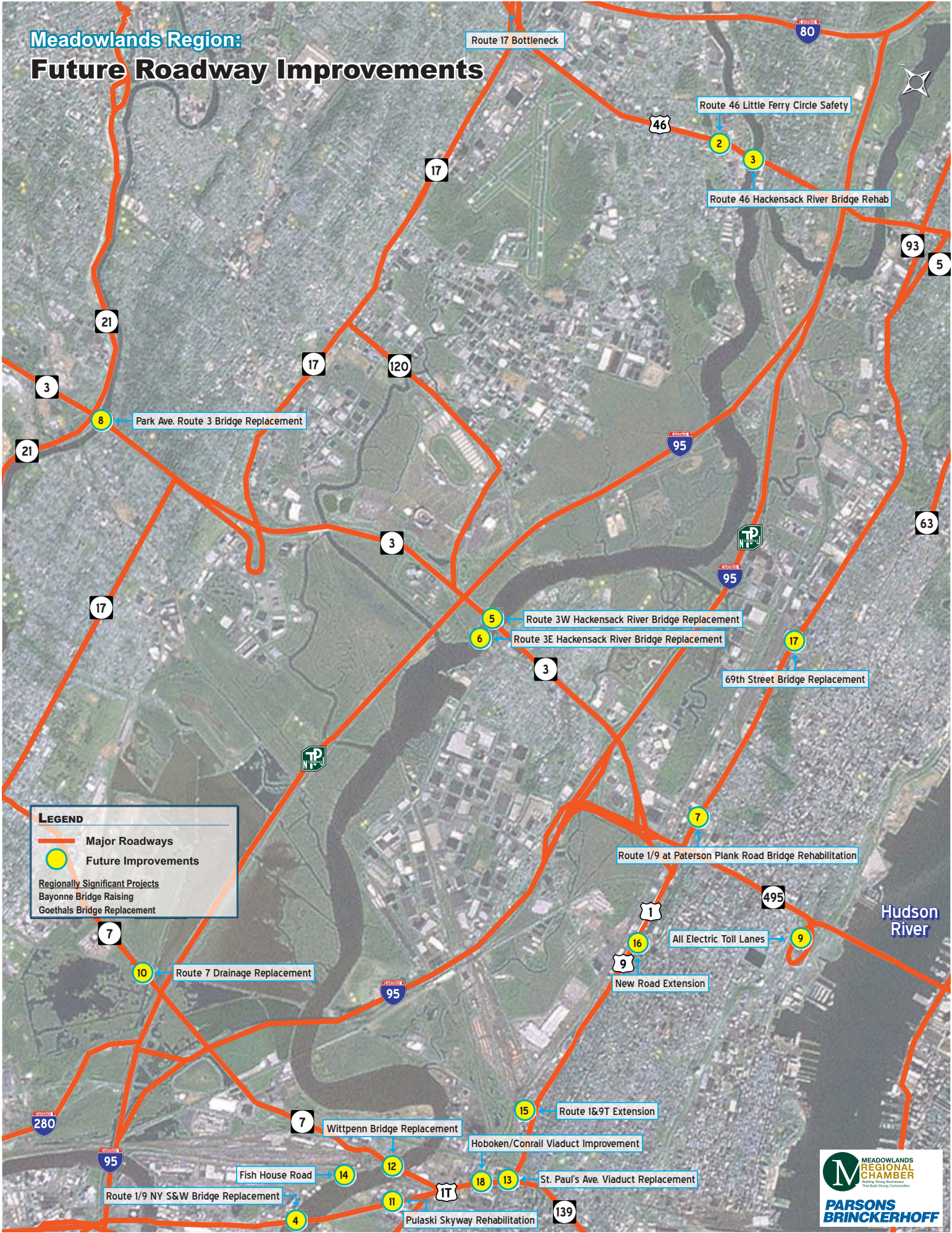
# Meadowlands Region: Recent Roadway Improvements



**LEGEND**

- Major Roadways
- Recent Improvements

# Meadowlands Region: Future Roadway Improvements



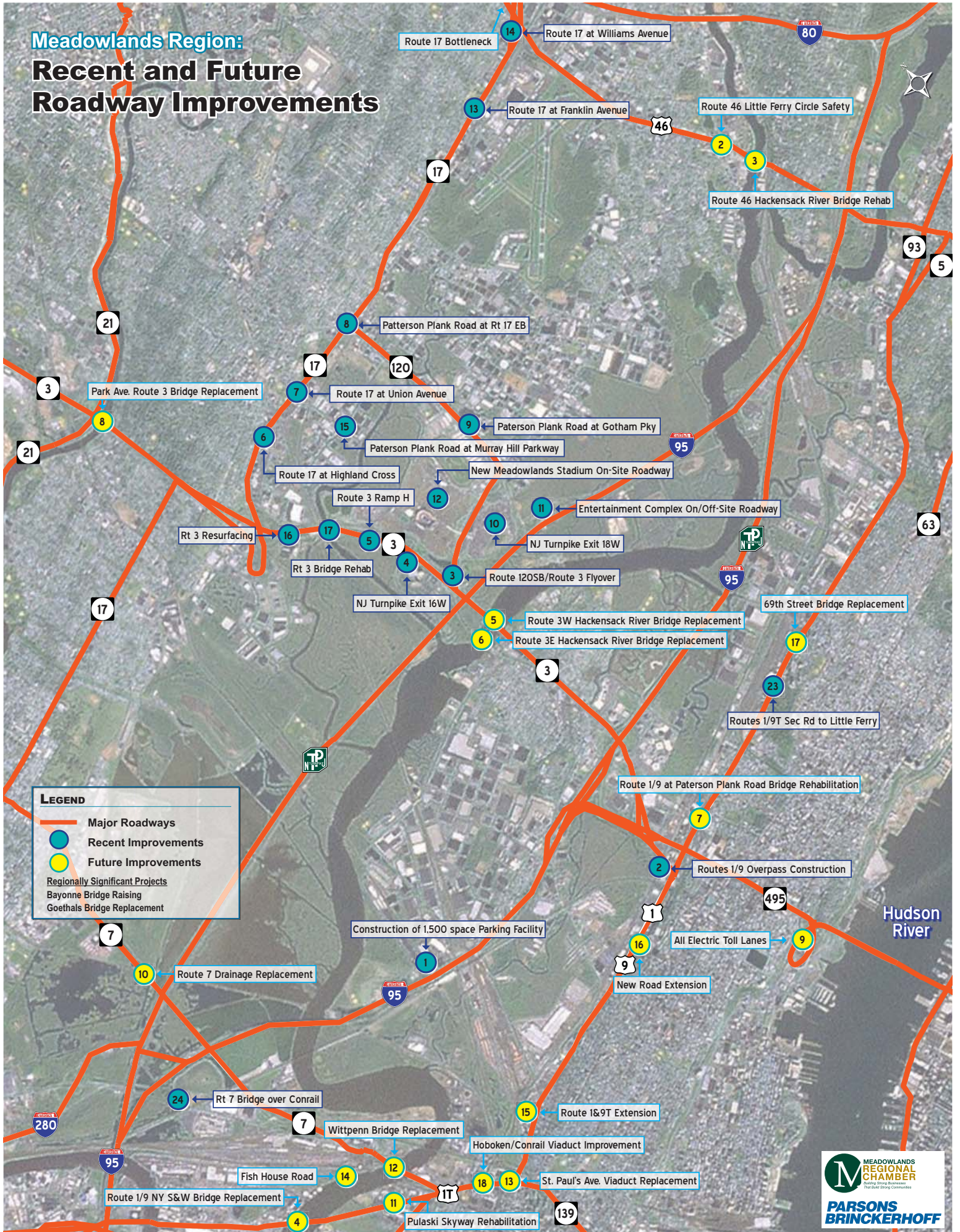
**LEGEND**

- Major Roadways
- Future Improvements

**Regionally Significant Projects**

- Bayonne Bridge Raising
- Goethals Bridge Replacement

# Meadowlands Region: Recent and Future Roadway Improvements



**Meadowlands Region:  
NJ Meadowlands Commission  
MASSTR Signal System Project**

