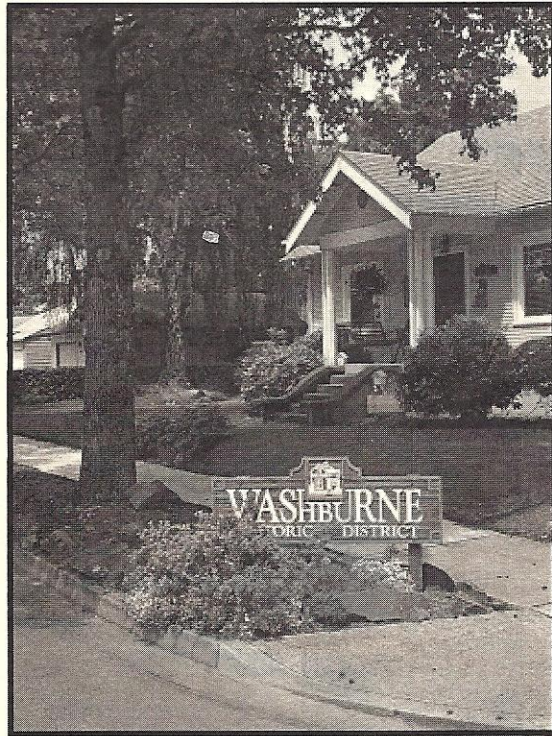


Washburne Historic District

Walking Tour Guide



Springfield, Oregon

The History of the Washburne District

Springfield was settled in the winter of 1848 by Elias and Mary Briggs. The Briggs' Donation Land Claim included 640 acres on the east bank of the Willamette River. The site was a rich prairie surrounded by timber and included a spring in a field. Springfield was platted in 1856 and included the blocks between South A Street and Main Street, and Mill Street and Third Street.

Springfield incorporated as a city in 1885. Its population fluctuating under 1,000 until the lumber boom in the early 1890s caused rapid growth to the city. Many residents were employed by the Booth-Kelley lumber mill and the flour mill owned by the Washburne family.

The Washburne Historic District was named for Charles Wesley Washburne, a prominent banker and mill owner. The Historic District was established in 1984 and listed on the National Register of Historic Places in 1987. The District comprises roughly 34 blocks bounded by 2nd Street and 10th Street to the east and west and B Street to H Street north and south.

The District is an example of an early working class neighborhood. The age of the buildings in the neighborhood spans from the 1890's through the 1940's. The majority of the buildings are residential and can be classified as either Bungalow, Mill Cottage, Traditional Box or Homestead style houses.





*Flanery House
315 5th Street
c. 1920*

This Colonial style residence was built for Floyd and Gertrude Flanery. The Flanerys were both pharmacists and owned a drug store on Main Street.

The two story house has a one story semi-enclosed back porch, enclosed side porch and carport. Note the decorative leaded window panes on each of the dormers. Single half circle transom windows are seen on each end of the gable. The shutters on the windows are later additions. Inside original wood work is found with built-in shelving and an elaborate central staircase. The second floor contains a library.

Washburne Historic District Neighborhood Association



*Fischer House
329 5th Street
1889*

This Transitional Box style house single level house dates from 1889 and was the first house built on block 7 of the Kelly's Addition to Springfield.

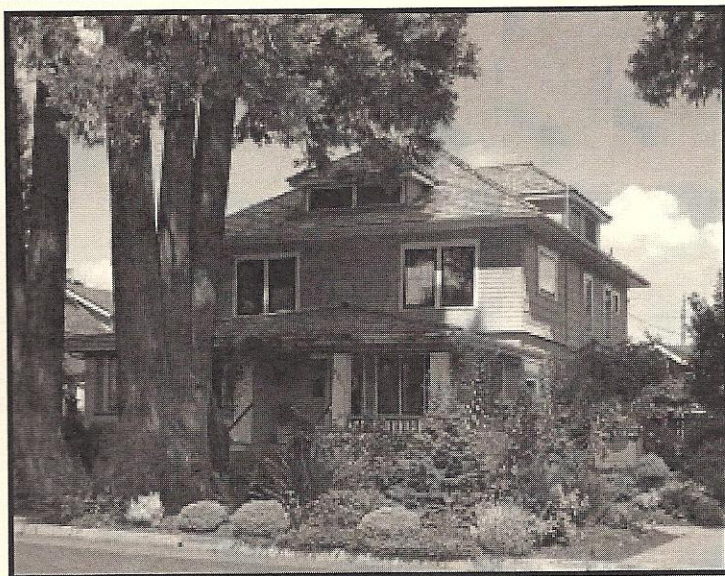
The house was built and owned by C.E. Fischer until 1923. He was the vice president of the Fischer-Boutin Lumber Company, was president of the town council from 1911-1916, and chairman of the school board in 1920.



*Rebhan House
448 5th Street
c. 1923*

This Bungalow style house was constructed for W.C. Rebhan and his wife Olive Jane Ferris in 1923. Rebhan was a doctor who began practicing medicine in Springfield in 1917. Olive was a nurse at Mercy Hospital in Eugene. The house was built by a Glenwood builder; a Mr. McKlin.

The home was modern for its time and features arched doorways, coved ceilings, french doors and built-ins inside. The house has clapboard and stucco siding with decorative attic windows. It once had a decorative pool in the back.



*Seavey House
448 D Street
c. 1900*

This large American Foursquare house was named for prominent citizen Jess Seavey who owned the house from 1911-1931. The Seavey family owned several large hop yards in the Springfield area. The Seaveys purchased the house from George Perkins; a prominent Springfield builder.

The house has two full stories. Original features include: hipped roof, dormers with fixed attic windows with diamond shaped and triangular panes, an angled bay and boxed cornices with bed molding.

See Map for optional route to houses "A" and "B"





*McMurray Store
521 5th Street
c. 1920*

This one and a half story structure was built as a residence in 1920. Concrete steps abut the street, a survival from the time this residence was "Edwards Market". In the mid 1920's this building was purchased from George Perkins and in 1926 became McMurray's store. McMurray sold the building to Edwards in 1938.

Significant remodeling had been done to the one story wing, which served as the store, however restoration work was done in the late 1990s to return the wing to its 1920s appearance.

Washburne Historic District Neighborhood Association



*Moore House
535 E Street
c. 1923*

This two story Bungalow was designed by architect John Hunzicker for Rev. James Moore, one time pastor of the Methodist Church of Springfield.

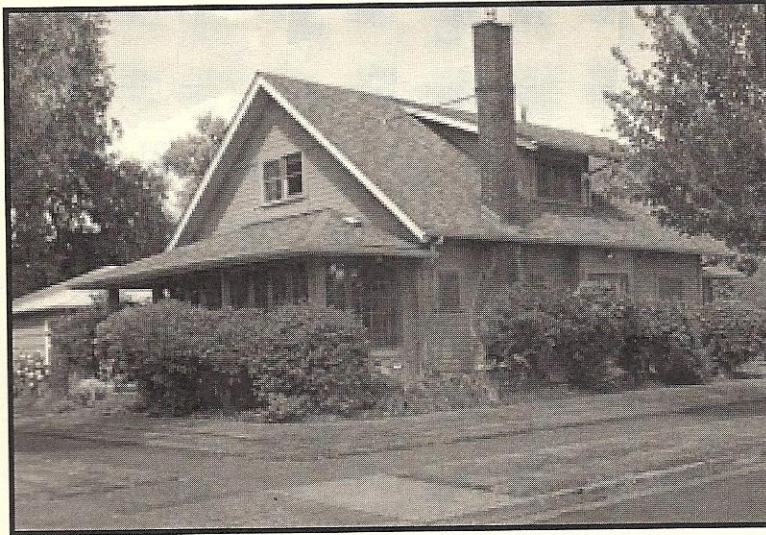
The house is distinguished by a wide "L" shaped porch and large decorative brackets at the roof. The exterior is finished with stucco. Inside the house the living and dining room are separated by glass french doors. Both rooms have original light fixtures and built-in window seats. A built-in china cabinet with a beveled glass mirror is located in the dining room.



*Lepley House
506 F Street
c. 1913*

This 1913 home displays typical Bungalow features: a large porch, heavy overhanging eaves, brackets and a large gabled dormer. The interior has undergone extensive alterations since the home was built, however the original woodwork remains primarily intact.

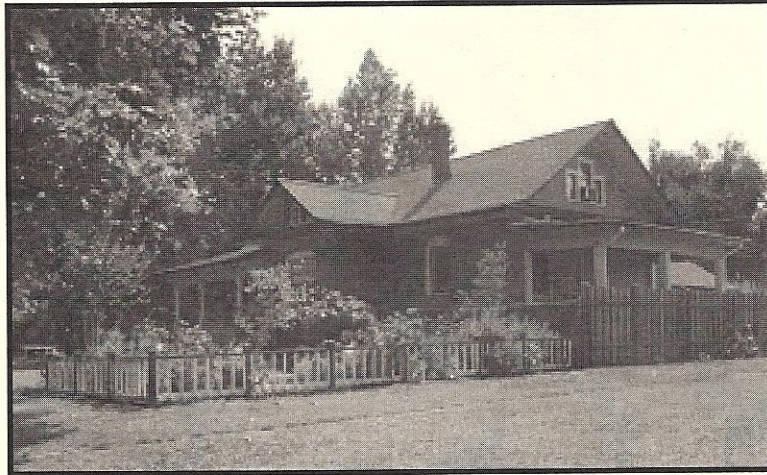
The Lepley brothers are shown as the owners of the property in 1912 and the house is shown in 1913 photographs. The Lepley brothers were prominent Springfield builders and are likely the builders of this house. The home was later sold to the Gossler family. Mr. Gossler was a postmaster.



*Dillon House
546 F Street
c. 1920*

This house is a characteristic Homestead style house, with its rectangular plan, steeply pitched gable roof and full width hipped roof porch. One half of the porch has been enclosed. The sides of the house are finished with drop siding and wide corner trim.

A mill worker named Dillon lived here with his son, Winkie. Older Springfield residents remember that Winkie rode a Harley-Davidson motorcycle in the 1920s.

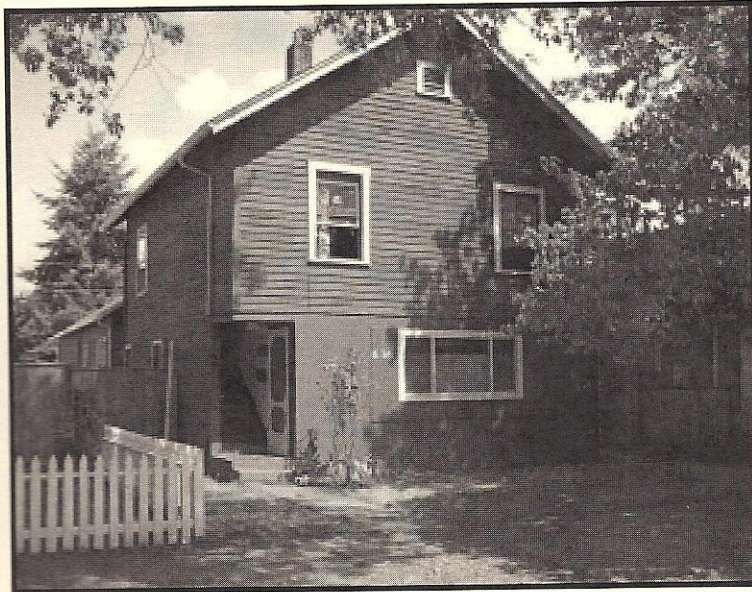


*J.H. Seavey House
638 6th Street
c. 1909*

This unusual Bungalow style house is the only brick masonry home in the District. It has a distinct three-quarter pitch multi-gabled bellcast roof with wide boxed eaves and elaborate eave returns. The "L" shaped wrap around porch features turned posts and a low pitch hipped roof. The gables are formed with vertical stacked brick.

The brick was originally left in its natural finish and color, but has since been painted. There is a small outbuilding (527 "F"), which may have served as a garage or paddock. John H. and Alice Seavey lived here in 1918.

Washburne Historic District Neighborhood Association



*Old Fire House
636 F Street
c. 1900*

The first fire station in Springfield was located in the old Odd Fellows Hall. It was moved to "F" street in the early 1910s. The fire chief would have lived upstairs of the fire house. Two horse carts were kept below the living quarters. The exterior of the fire house has shiplap siding which was originally white.

The Fire Department was moved in the 1930s and this structure was converted to apartments. The stairway was added and new stucco was added to the lower part of the building.



*General Hospital
846 F Street
c. 1914*

Built in 1914 this structure first served as Springfield General Hospital. The building design was strongly influenced by the Bungalow style, popular at that time. The building features exposed collar ties at the gable ends, shiplap siding, full width front porches and a 6' wide hallway on both levels serving as a public space.

The hospital played a major role in the growth and city providing health care to the increasing population. This building is probably the last wooden building remaining in Lane County that served as a hospital in the early 1900s.



*Eby House
832 E Street
c. 1924*

This 1924 home is a typical Bungalow style house. It has bevel siding without corner trim, multi-pane decorative windows and a centered gable roofed porch.

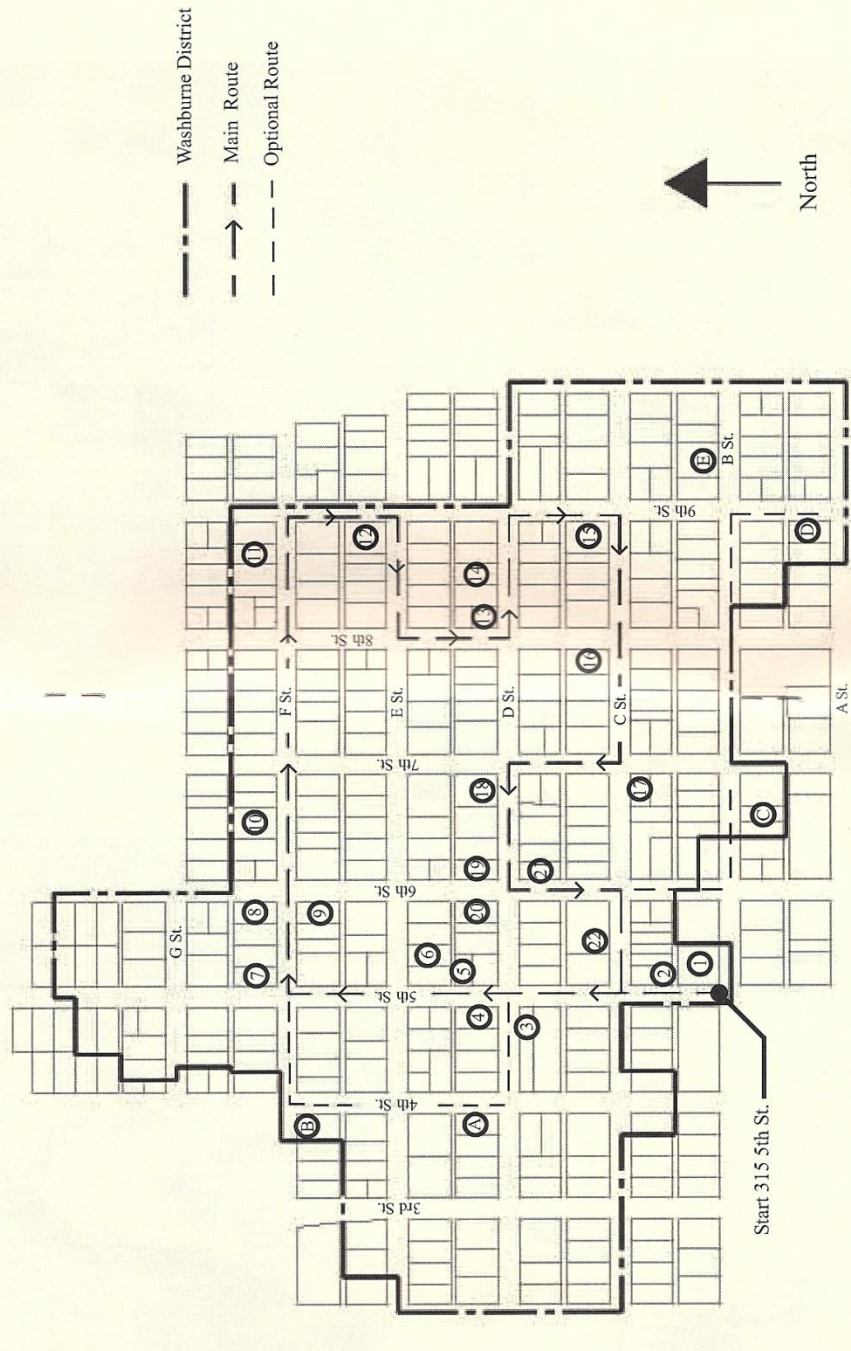
Tax records show this house was first owned by B.F. Eby and then had several subsequent owners before the 1930s.

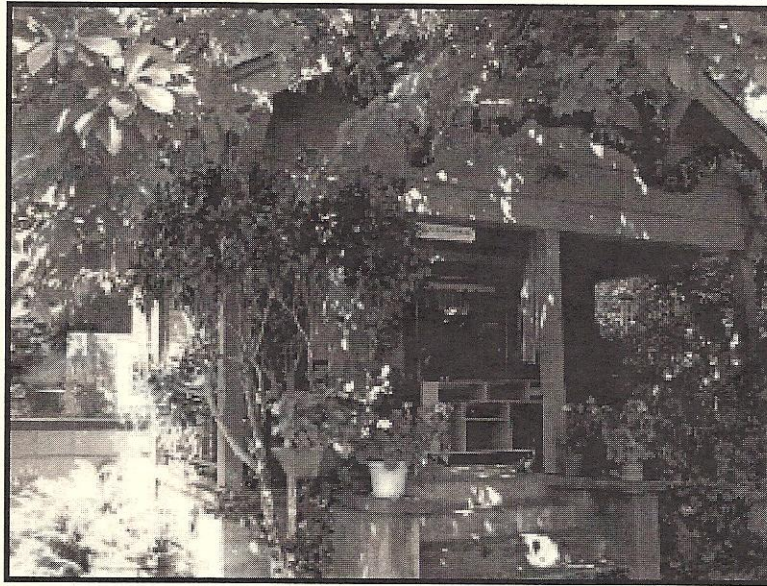


McCracken House
804 D Street
c. 1906

This 1906 home with Queen Ann characteristics was built by Springfield builder T.J. McCracken for his family. McCracken built many of the houses around Springfield, including the home at 521 8th Street and the Methodist church and parsonage.

The front porch originally wrapped around the side of the house and a cupola projected from the central portion of the house, but was removed when McCracken was teased about living in a church. Windows on the lower level have been replaced and a garage has been added to the rear of the house.

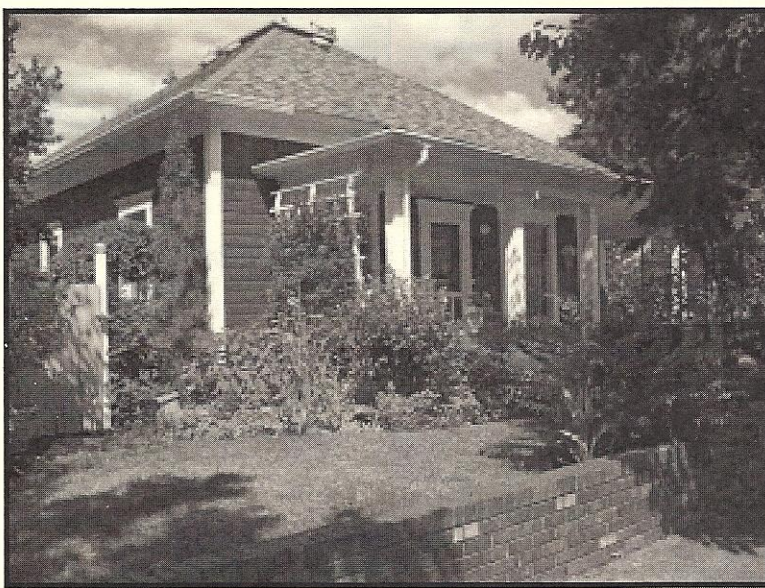




*Meacham House
832 D Street
c. 1912*

This is a one story Bungalow style home. Typical Bungalow features seen here are the low half pitch roof, front facing gable roofs, and decorative brackets supporting wide vergeboards with pointed tails. Originally the exterior was covered with narrow bevel siding, but most of it has been covered with wood shakes.

Chauncy Meacham, a carpenter, and his family lived here. Tax records show this house to have been built in 1924, but the 1912 Sanborn Map shows a house with a similar plan. This home is likely a remodel of the original structure.



Smith Mountjoy House
870 C Street
c. 1910

This Mill Cottage style house was built in 1910 and is named for Smith Mountjoy who lived in the house for most of his life. Mountjoy was a local carpenter and mill worker.

The one story house has a hipped roof and drop siding. It had a central chimney that is no longer there. The roof of the house originally had a decorative wrought iron parapet at its peak, which is also missing. The floor plan of the house is unchanged and features three bedrooms and a wrap around veranda at the exterior of the house.



*Cox House
406 8th Street
c. 1910*

This unusual house is the only one of its type in Springfield. The porch is a "Y" shape with the entrance facing the corner of the street. The porch is supported by fluted turned solid wood posts. The siding is clapboard and two chimneys project through a varied roofline. Windows are bungalow in nature.

1912 Sanborn maps show no modifications have been made to the original plan of the house. James Cox bought the property in 1910 and Joseph and Sarah Cox were the first owners.



*Catching House
346 7th Street
c. 1908*

This Dutch Colonial was built and first owned by George Catching. It has drop siding and corner trim. The gambrel roof has gambrel dormers. The posts on the porch are turned wood. The exterior remains predominantly in its original condition, except for the back porch, which has been enclosed and a sun deck was added.

The Catching family was a prominent Douglas County family. George Catching may have been the son of J.C. Catching of Coos Bay.



*Stearmer House
656 D Street
c. 1930*

This home is a 1930s Bungalow featuring a twelve lite front door with side lites. The home has three over one windows with narrow trim and molding which are grouped in sets of three. The narrow trim is also seen as the corner trim that ends the clapboard siding.

Roy Stearmer was a mill worker who lived in the house from 1935 to 1949. He is thought to be the first owner of the house.



*McKlin House
606 D Street
c.1912*

This 1912 Bungalow is a good example of this style as it developed in the Northwest. It is two story with a low pitched multi-gable roof with wide overhanging eaves, exposed beams and rafters with projecting brackets supporting large vergeboards. The windows at the front are typical Bungalow style: multi-paned over a large single pane.

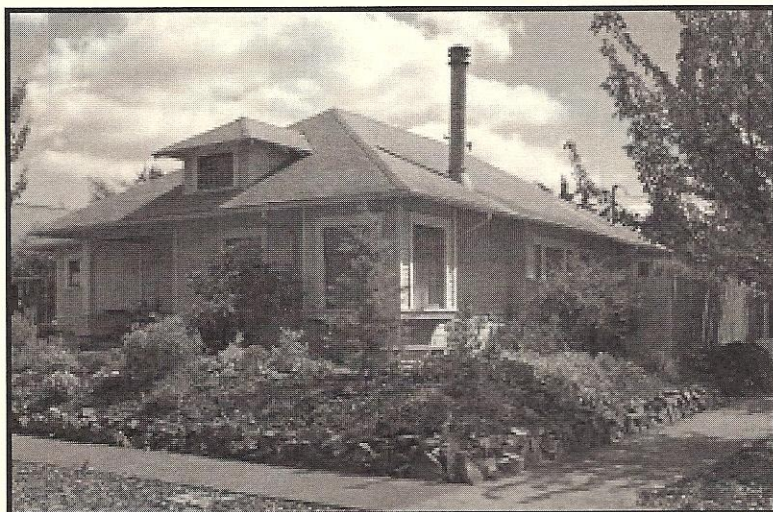
The house was designed by Merton McKlin; a builder in the Springfield area. McKlin built the house for his wife Civility.



*May House
546 D Street
c. 1924*

This 1924 Bungalow has bevel siding and a multi-gabled roof. The recently enclosed wrap around porch is accented by three post columns at the corners supported by high pedestals. The exterior brick chimney has been rebuilt. Inside most of the original molding, built-in cabinets and a few original light fixtures remain.

The house was built by Lawrence L. May, a builder and planer at Booth-Kelley Lumber Co.



*Rychard House
607 D Street
c. 1912*

This home exhibits Craftsman-Bungalow features. Cantilevered bay windows have scrolled braces. Note the bay window at the home's northwest corner. The sides of the house are finished with shingles on the lower portion and bevel siding at the top. All windows are trimmed with a wide architrave and drip molding.

The original owners and occupants were Chauncey and Leatha Rychard; 1911-1927.



*Ebbert Church Parsonage
530 C Stret
c. 1916*

Built in 1916 as the parsonage for newly completed Ebbert Memorial Church, this structure is now used for church activities. The residence originally had eight rooms, two sleeping porches and a large front porch. Three french doors separate the living and dining rooms from the hall and each other. Most of the original woodwork inside has been maintained with its original finish.

See Map to continue with optional route to homes "C", "D" and "E".

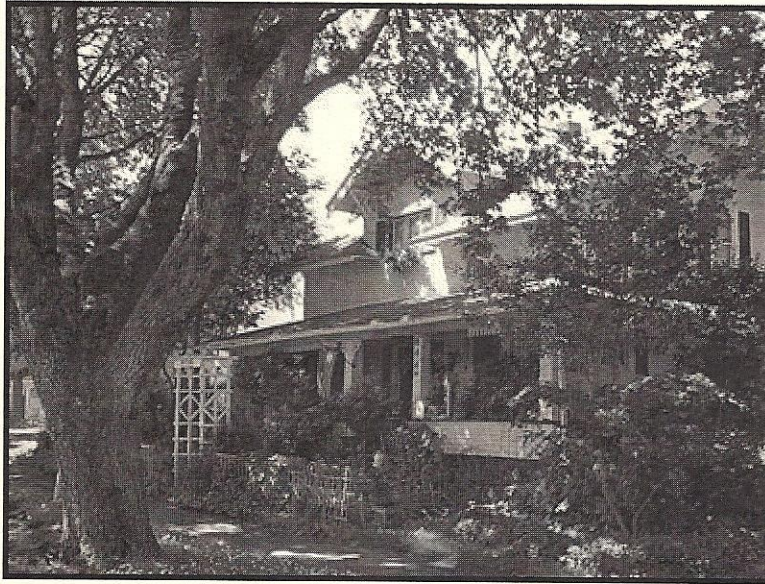


*Perkins House
346 D Street
c. 1907*

This Transitional Box style house was built in 1907. The George Perkins family was the first to live in the house. The one and a half story house is primarily in its original condition. The front door is a heavy glassed wood frame and leads to a small hallway.

Open bookshelves separated the kitchen from the dining room. The kitchen, at the very back of the house has a small bathroom and pantry to one side and an enclosed porch on the west side.

Washburne Historic District Neighborhood Association

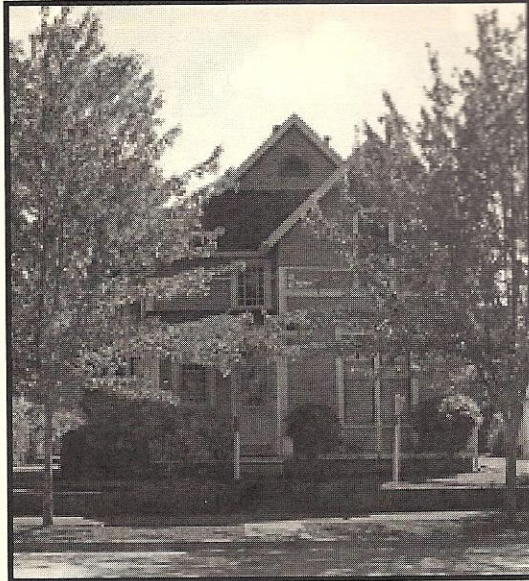


*Ebbett House
644 4th Street
c. 1905*

This Rural Vernacular Farmhouse style home has a wrap around full width veranda with built up square posts and a low framed wall. The gable roof is interrupted by dormers at the upstairs bedrooms. Wide vergeboards and braces finish off the gable ends. The scroll work and shutters have been added at a later date.

The 1918 Polk Directory lists Walter W. and Lydia Ebbett as residing in the house. Walter Ebbett worked for the Springfield Garage.





*Innis House
637 B Street
c. 1890*

This Queen Anne style house was built in the 1890s by John B. Innis for himself. Innis was a master carpenter who made coffins in the back of a furniture store on Main Street. He also built the house at 627 B Street.

The house is a one and one-half story building with a bay window, steeply pitched roof and varied roofline. Some of the decorative features of the house are the diagonal pattern shingles, brackets and decorative trim on the eaves, cornices and gables.



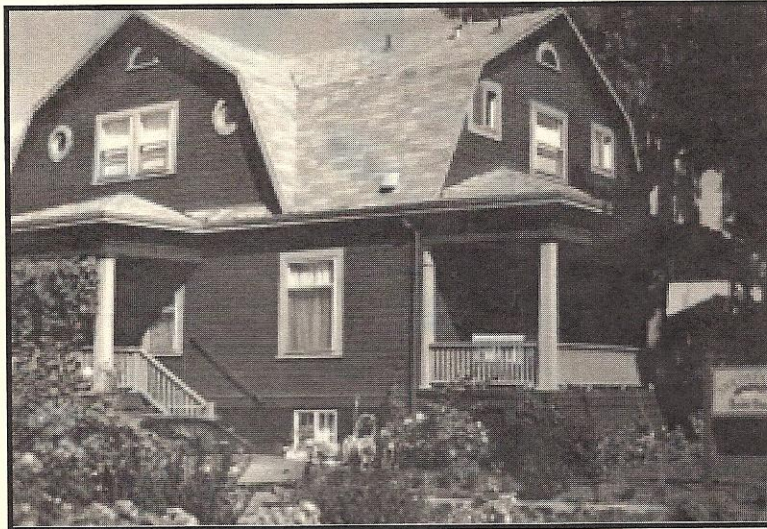


*Kessey House
858 A Street
c. 1900*

This classic Bungalow was built in the early 1900's. It is named for Orville B. Kessey, a cashier for Commercial State Bank who lived here around 1918.

The house is a one and one-half story plan with a full width porch on the front. Typical one over one double hung windows fenestrate the sides. The base of the exterior walls end in a flared skirt. Continuous trim wraps the house above the window header. The shingled dormer at the front of the house is fenestrated by a crossbuck window.





*Coffin House
922 B Street
c. 1915*

This Dutch Colonial Revival style residence was built in 1915. J. Wilbur Coffin and his family lived here soon after the house was built and owned it until 1939. J. Coffin was a sawyer for the Booth-Kelley mill and served on Springfield City Council from 1913-1917.

The house features a gambrel roof, forming a two story plan and full basement. The dormers have bullseye windows and half circle vents. Round windows at the front dormer have been replaced by sliding windows.

Information in this brochure was taken from the 1985
Springfield Historic Inventory - Washburne District.

Printing made possible by a CLG grant from the
Springfield Historic Commission.

“The activity that is subject to this publication has
been financed in part with Federal funds from the
National Park Service, Department of Interior, as
provided through the Oregon State Historic
Preservation Office. However, the contents and
opinions do not necessarily reflect the views or
policies of the Department of the Interior, nor does
the mention of trade names or commercial products
constitute endorsement or recommendation by the
Department of the Interior.”

For information on the Springfield Historic
Commission please contact the City of Springfield
Development Services Department 726-3753.

Washburne Neighborhood Association
Brochure prepared by Maren Tomblin

