



NISEKO
HOKKAIDO JAPAN

Niseko Product Directory

Meeting and Incentive Planner 2013/2014



Japan. Endless Discovery.



Mt. Yotei and Shiribetsu River photo: Sumiko Yamada

Introduction



This Niseko product directory and meeting planner has been compiled with the needs of travel professionals and event planners in mind and is a comprehensive resource, to assist you in understanding the diversity of Niseko.

Niseko is located in Hokkaido, the northernmost island of Japan and is renowned for its superb 'powder snow', fantastic low altitude skiing and snowboarding opportunities. Mt. Yotei (Hokkaido's very own Mt. Fuji) awes visitors to the district all year round and provides endless photo opportunities.

Niseko is the main attraction for many visitors from around the world to visit Hokkaido and is home to many entrepreneurs and adventure professionals, who have utilized their diverse selection of skills to enhance tourism offerings in the district.

In Niseko you will find international brand Hotels along with a wide variety of superior accommodation choices and a selection of conference facilities. The area is safe and the people are very friendly and welcoming.

Complementing the accommodation and conference options, there are an extensive selection of boutique restaurants and cafes scattered across the district serving healthy, nutritious Japanese foods and much more.

Multi-language menus and multi-language tourist information, make navigating the area simple and ensure unforgettable experiences.

Whether you are a Japanese corporation hosting overseas clients or an overseas company hosting a company incentive tour or conference, the multi-lingual services available will ensure all participants can enjoy their time here in Japan - with less effort.

In addition to the wide variety of adventure and scenic options on offer, Niseko is also home to several international standard golf courses, diverse ski areas, 15 onsen establishments (hot springs), mountain bike parks, great fishing in the local waterways, and a good variety of walking trails. The national parks and quasi national parks that surround the area offer a wide selection of nature for visitors to enjoy.

Niseko's 4 distinct seasons, also ensure that every visit to Niseko is unique and as inspiring as the last and provide the inspiration that keeps visitors returning. Niseko is best defined as a 'power spot', a place of invigoration and inspiration, where great ideas are born and where everlasting memories can be made.

We hope you find this directory an invaluable tool in planning rewarding holidays or conferences in our region.

Niseko Industry and Tourism Department
Hokkaido, Abuta gun, Niseko Cho, Fujimi47

Tel: +81(0)136-44-2121

Fax: +81(0)136-44-3500



Japan. Endless Discovery.



Contents



Introduction	01	Winter Events	31
Contents	02	Ski Resorts (Niseko United)	32
About Niseko Tourist Association	03	Ski Resorts (Annupuri, Niseko Village, Grand Hirafu,	
Important Contacts	04	Hanazono, Moiwa)	33-37
Map – Where is Niseko?	05	Niseko Rules	38
Map – Niseko District Map	06	Resort Information	
Map – Niseko Town & Resort Area Map		Accommodation	40
(Niseko Town, Annupuri, Higashiyama, Moiwa, Konbu)	07	Dining	41
Getting Here		Restaurant Guide	42-43
Getting Here	08	Wine	44
Arrival Information	08	Shopping (Recreational, Essential)	46
New Chitose Airport (Carrier Information)	09	Shopping (Art, Boutique Factories, Museums)	47
New Chitose Airport (International/ Domestic)	10	Relaxation	48
Access (Rental Cars)	11	Onsen (Hot Spring)	49
Access (Train JR)	13	Facilities (Discount Pass)	50
Niseko Ski Express	13	Golf	51
New Chitose Airport JR Station Access information	14	Cycling (Green Bike)	52
Kutchan and Niseko JR Station location maps	15	Hiking and Recreational Walking	53
JR Hokkaido Railpass information	15	Niseko In The Media	54
Access (Bus)	16	Conference	
Access (Bus Company Contacts)	17	Conference (Niseko Chomin Center)	55
Access (Chartered Coach)	18	Niseko Chomin Center Floor Plans/ Essential Information	56
Essential Information		Accommodation/ Activities	
Emergency Services	19	Hotel Section	
Banking/ Postal	20	Hilton Niseko Village	57
Public Holidays/ Useful Services	21	Hotel Kanronomori	58
Courier Information	22	Niseko Hotel Ikoi no Mura	59
Travel Trade Resources		Hotel Ashiri Niseko, The Green Leaf Niseko Village	60
Travel Trade Resources	23	Niseko Northern Resort Annupuri Hotel, Niseko Grand Hotel	61
Travel Trade Resources	24	Annupuri Onsen Yugokorotei, Annupuri Village	62
Four Seasons- Spring	26	Activities Section	
Spring Events	26	Activities	63-67
Four Seasons- Summer	27	Boutique Accomodation Section	
Summer Events	27	(Condominium, Pensions, Rental Cottages, Camping Areas)	
Four Seasons- Autumn	28	Accomodation (Boutique Accomodation)	68-73
Autumn Events	28		
Four Seasons - Autumn Events/ Niseko Steam Locomotive	29		
Four Seasons- Winter	30		

About Niseko Resort Tourist Association



In total 316,643 people visited Niseko during the year ending March 2013

The Niseko Resort Tourist Association was established on the 1st of September 2003. The Niseko Town Council (Local Government) contributed 50% of the funding, with the remaining funding coming from local businesses for the conception of the new promotional company. This was the first Government Tourist Association in Japan to become an incorporated company. The Niseko Resort Tourist Association works closely with Niseko's hospitality industry and tourism business operators and local service providers and is responsible for the promotion of Niseko Town as a premium tourist destination that offers an experience unlike any other in Japan. The Niseko Resort Tourist Association works closely with the Japan Tourism Agency, who run the 'VJC' campaigns (Visit Japan) and actively promotes and provides information updates relating to the Niseko area in key markets, both domestically and internationally.

What we do to promote Niseko.

Niseko Resort Tourist Association undertakes a variety of different activities to market and promote the region. To achieve our objectives we use:

Online marketing.

Our website www.niseko-ta.jp is one of the premier information resources covering the wider Niseko district and provides up to date information in 11 different languages including Japanese. The website is updated on a regular basis and the English, Chinese and German Languages are updated by native speakers for accuracy of information and ease of reading by clients. Event information and product listings, accommodation search engines and information downloads, together with stunning Niseko images and social media integration make the site come alive and add to the usability of the site.

Travel trade product updates, familiarizations, media support and site inspections.

We want you to know our version of Niseko. Nobody knows a district like the locals do and we use our local bonds to give you accurate real time information. The travel division are happy to assist you developing itineraries and booking services as well as assisting with new angles for media releases and can help set up site inspections for media members.

Meetings, incentives, conferences.

Niseko Town opened its convention and event centre in the Niseko Town CBD in late March 2012. This facility provides extra choice for meeting planners and visitors to the region, who require conference facilities. Clean and modern facilities coupled with state of the art technology makes this the ideal venue choice for Meetings and Incentive events in Niseko. Assistance in arranging the finer details of your conference and co-ordinating the different activities required to make the conference or event a stand out success can also be provided. Please contact the Niseko Tourism and Industry Division of the Niseko Town Council for further information.

Let us help you make your next Niseko event a reality.

Radio Niseko

Niseko is promoted on the local community radio station FM Radio station. Radio Niseko 76.2 MHz, opened in March 2012 and is based next to Niseko's onsen (hot spring) complex, Kiranoyu.

Since its opening the radio station is an important part of the Niseko community and delivers music and variety programs as well as up to date information, from a local perspective to the community and involves the community as much as possible in all aspects of its operation.

The Radio Station is also a civil emergency information provider in the event of a natural disaster and will assist in getting vital instructions to all areas of the community.

Broadcasts will be made using simultaneous broadcasting methods as well as the internet, enabling the latest Niseko information to reach a wider audience.

There are Niseko fans all over Japan and in many countries overseas, efforts will be made to provide some program content in International languages, to ensure everyone feels part of the community.

Important Contacts



Contact us

Niseko Resort Tourist Association

Hokkaido, Abuta, Niseko cho, Motomachi 77-10

Tourist Information:

Tel: +81(0)136-43-2051 or

Tel: +81(0)136-44-2468

Administration:

Tel: +81(0)136-44-2420

Fax: +81(0)136-43-2050

E-mail: master@niseko-ta.jp

Chief Executive Officer

Tel: +81(0)136-44-2420

General Manager - Marketing

Tel: +81(0)136-44-2420

Travel Agency Services

Tel: +81(0)136-44-2420

Online Marketing/Communications Executive

Tel: +81(0)136-44-2420

Office Administrator

Tel: +81(0)136-44-2420

Accounts Manager

Tel: +81(0)136-44-2420

Radio Niseko – Community FM 76.2 MHz

Tel: +81(0)136-44-2420

Facebook: www.facebook.com/radioniseko

Associated Agencies

Niseko Town Council – Tourism and Industry – International Section (English, Chinese, German)

Tel: +81(0)136-44-2121 ext 214 (ni, ichi, yon)

Niseko Town Convention Centre Manager

Tel: +81(0)136-44-2234

Niseko Town Business Association

Tel: +81(0)136-44-2214

For more information on Niseko Tourist Association and Niseko products and services please visit

<http://www.niseko-ta.jp>

Connect with us

Facebook

Niseko Resort Tourist Association

Nisekotown

Niseko Promotional Video on Youtube

www.youtube.com search [Niseko.wmv](#)

Japanese mobile telephone link QR Code

Twitter

#nisekorta



Hash Tags

#nisekoevent	Event information
#nisekostay	Accommodation, Hotel and condominium information
#nisekoactivity	Activity information
#nisekoski	Ski, snowboard, snow Information
#nisekocycle	Cycling
#nisekofoods	Food
#nisekojob	Employment information
#twinniseko	Niseko Twitter
#niseko	Niseko Town information
#nisekolocal	Information for locals
#nisekooutdoor	Outdoor information
#nisekomusic	Music information
#nisekorelax	Relaxation information
#nisekoshop	Retail information
#nisekoonsen	Hot spring information

Useful Japanese Hash Tags

#snowjp	Japan snow information
#skijp Japan	Ski information
#snowboardjp	Japan snowboard information
#tenki	Japan weather information

Japan National Tourism Organization

JNTO's website is also the official voice of Japanese tourism that provides valuable and swift updates on national tourism strategies and campaigns.

Website: <http://www.jnto.go.jp>

Information is available in thirteen languages, including English, German, Spanish, French, Chinese, Korean, Russian, Portuguese, Arabic, Italian and Thai.

<http://www.jnto.go.jp/eng/location/spot/sportexp/niseko.html>

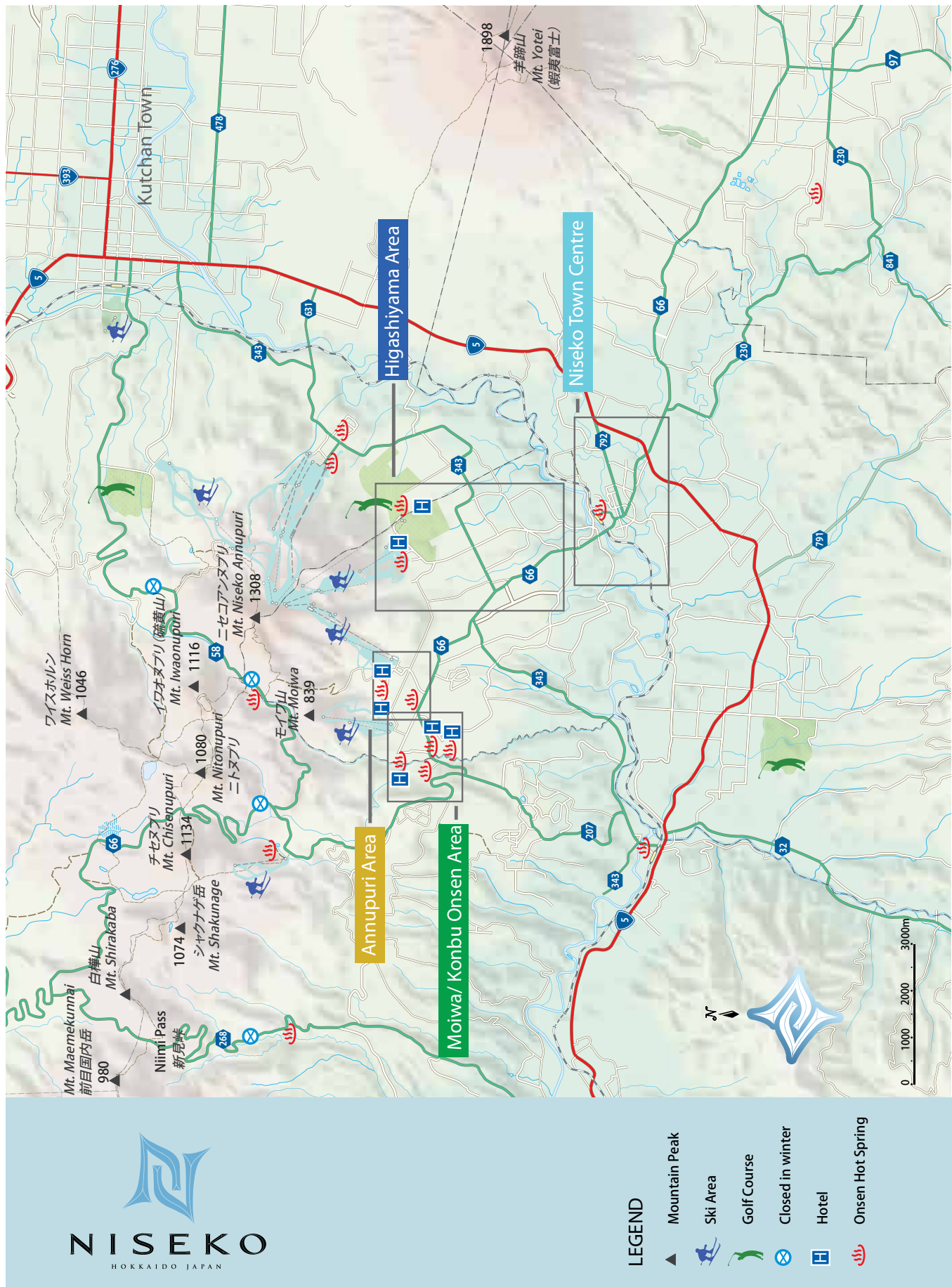


Japan. Endless Discovery.

Where is Niseko



Niseko District Map



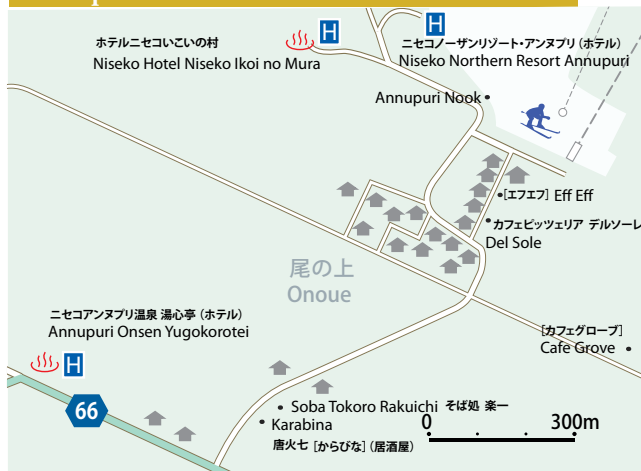
<http://www.town.niseko.lg.jp/goannai/image/nisekomap.pdf>

Niseko Town & Resort Area Map

Niseko Town Centre



Annupuri Area



Moiwa/Konbu Onsen Area



Higashiyama Area



Accommodation (Pensions, B&B, Lodges, Backpackers)

Download Niseko Map at: <http://www.town.niseko.lg.jp/goannai/image/nisekomap.pdf>

Getting Here, Arrival Information



Niseko is well-served by the New Chitose Airport, which is the largest commercial airport in Hokkaido, operating a large number of both domestic and international flights on a daily basis. There is a wide selection of transportation options you can use to get to Niseko from the New Chitose Airport ranging from trains, buses, taxis, chartered limousines through to rental vehicles. Access is easy and affordable.

Radiation and Radiation effects

The Ministry of Land Transport and Infrastructure has released comprehensive information for travellers who are worried about the Radiation and Radiation effects when visiting Japan.

- Japanese <http://www.mlit.go.jp/common/000226532.pdf>
- English <http://www.mlit.go.jp/common/000226526.pdf>

International Visitors

Passports

You must have a passport that is valid for at least the period of time that you are intending to stay in Japan.

Arrival

All passengers arriving from overseas must present an arrival card upon entry into Japan; obtain this card from your flight attendant or from your travel agent. An example and further information is available on the website below.

http://www.jnto.go.jp/eng/arrange/essential/pdf/customs_declaration.pdf

Visa information

For further visa information on Japan, please check with your local Japanese embassy. Alternatively you can check the Ministry of Foreign Affairs' Website.

http://www.mofa.go.jp/j_info/visit/visa/index.html

Japanese Customs Allowances

Detailed information on customs allowances into Japan can be found at the Customs website in Japanese and English.

<http://www.customs.go.jp/english/summary/passenger.htm>

Departure Tax

Departure tax for Japan is included in the cost of your airline ticket; please proceed directly to customs for processing after check in for departure from the country.

General Information

New Chitose Airport

It is 115 kilometres from the New Chitose Airport to Niseko. The travelling time will vary with weather conditions; the average travelling time is 2 hours and 15 minutes up to 3 hours.

Flight Reservations and Hotel Reservations

The Niseko Resort Tourist Association is a fully licensed travel agency and can assist you with all of your domestic travel requirements from airfares to hotels. The latest information is accessed to ensure you receive the best rates. Ground operations can be arranged for tour operators. To make an enquiry please call 0136-44-2420 and ask for English assistance or check the website at www.niseko-ta.jp (Chinese language assistance is available via email)

Taxi and Luxury Limousine Companies

In Niseko there are a variety of taxi companies to choose from to make your travel to and from the airport and around the district easy. Many of the drivers speak some English and are used to international travellers.

Flag fall is for 2 kilometres, there after the fare will be charged per kilometre. The flag fall fare is clearly marked on the side of the vehicle. Most vehicles are medium sized saloons, if you require a larger vehicle, then you will need to stipulate 'Jumbo' at time of reservation, these vehicles are in limited supply and high demand. (Jumbo is a 10 seat van)

- Niseko Hire Tel: +81(0) 136-44-2635 (Jumbo available)
- Smile Taxi Tel: +81(0) 136-48-2700 (Jumbo available)
- Misora Hire Tel: +81(0) 136-22-1171 (Jumbo available)
- Kutchan Hire Tel: +81(0) 136-22-1212

Limousine/ Luxury Hire Car Service

- Niseko Premium Shuttle
Tel: +81(0)136-44-2640 (Mercedes Benz and Hi-Ace Grand Cabin)
- Booking site available online. Fare includes pick up anywhere in the Niseko Town boundaries. (check at time of booking)

New Chitose Airport (Carrier information)



New Chitose International Airport is conveniently located within 2 hours and 15 minutes* travelling time from Niseko and access is available by train, bus, and car. 14 international airlines from 6 overseas countries directly connect to the New Chitose Airport. (*travelling times may vary depending on service)

- China (49 flights a month up to 3 times daily)
- Taiwan (106 flights a month, daily flights)
- Guam (16 flights a month)
- Korea (over 140 flights a month, daily flights)
- Russia (8 flights a month).
- Thailand (24 flights a month)
- Hawaii (24 flights a month)

Website:

<http://www.new-chitose-airport.jp/> (Japanese)
<http://www.new-chitose-airport.jp/en/> (English)
<http://www.new-chitose-airport.jp/ko/> (Korean)
<http://www.new-chitose-airport.jp/tw/> (Traditional Chinese)
<http://www.new-chitose-airport.jp/cn/> (Simplified Chinese)

Telephone

Airport Information +81(0)123-23-0111

Airline Information (★ Indicates a code-shared flight)

Airlines operating internationally to and from New Chitose Airport as at June 2012 are listed below. (Changes in schedules may occur unexpectedly. Please check New Chitose Airport Website for details)

Air China

New Chitose – Beijing (Tue, Wed, Sat, Sun) ★
 Beijing – New Chitose (Tue, Wed, Sat, Sun) ★

All Nippon Airways

New Chitose – Beijing (4 times a week - Tue, Wed, Sat, Sun) ★
 Beijing – New Chitose (Tue, Wed, Sat, Sun) ★
 New Chitose – Taipei (daily); Taipei – New Chitose (daily) ★
 New Chitose – Guam (Mon, Fri); Guam – New Chitose (Mon, Fri) ★

Cathay Pacific Airways

New Chitose – Hong Kong (Daily) ★
 Hong Kong – New Chitose (Daily) ★

China Airways

New Chitose - Taipei (daily)
 Taipei – New Chitose (daily)

Trans Aisa Airways

New Chitose - Taipei (Tues, Sat)
 Taipei - New Chitose (Tues, Sat)

China Eastern Airways

New Chitose – Shanghai (Tue, Wed, Fri, Sat and Sun) ★
 Shanghai – New Chitose (Tue, Wed, Fri, Sat and Sun) ★

United Airways

New Chitose – Guam (Mon, Fri) ★
 Guam - New Chitose (Mon, Fri) ★

Eva Airways

New Chitose – Taipei (daily) ★
 Taipei – New Chitose (daily) ★

Japan Airlines

New Chitose – Seoul (2 flights daily) ★
 Seoul – New Chitose (2 flights daily) ★
 New Chitose – Shanghai (Tue, Wed, Fri, Sat and Sun) ★
 Shanghai – New Chitose (Tue, Wed, Fri, Sat and Sun) ★
 New Chitose – Hong Kong (Daily) ★
 Hong Kong – New Chitose (Daily) ★

JIN AIR

New Chitose - Seoul (Daily)
 Seoul – New Chitose (Daily)

Korean Air

New Chitose - Busan (Tue, Thu, Sat)
 Busan – New Chitose (Tue, Thu, Sat)
 New Chitose – Seoul (2 Flights daily) ★
 Seoul – New Chitose (2 flights daily) ★

New Chitose Airport (International/ Domestic)

Sakhalinskije Aviatrassy Airlines:

Yuzhno-Sakhalinsk (Wed, Sat)

Yuzhno-Sakhalinsk – New Chitose (Wed, Sat)

Hawaiian Airlines

New Chitose – Honolulu (Wed,Fri,Sun)

Honolulu – New Chitose (Tue,Thu,Sat)

Thai Airways

New Chitose – Bangkok (Wed,Fri,Sun)

Bangkok – New Chitose (Tue,Thu,Sat)

Airport Facilities

New Chitose Airport is the largest domestic and international airport in Hokkaido and boasts state-of-the-art information facilities and shopping opportunities. A working chocolate factory, childrens themed play area and stuffed toy nature world, along with a convenience store and drug stores can be found in the terminal building. All facilities are easily accessible and a special assistance vehicle is available for people using the facilities.

Banking and Foreign Exchange services installed at the airport

ATMs (Hokkaido Bank, CitiBank, Seven Bank), a North Pacific Bank branch office, a Foreign Exchange counter as well as postal facilities are inside the terminal building.

Group facilities

Group facilities include a reception room, a large conference room, tour group lounge, an Onsen (hot spring) and Hotel are on route to the International terminal as well as assorted tour desks.

Medical Facilities in the Airport

To cater for health and safety of passengers, the airport includes medical facilities (Otani Hospital Airport Clinic) and it is possible to purchase both domestic and international travel insurance at designated counters.

Personal Comfort

For personal comfort, a dressing room, a powder room, a nursery, a dry cleaning service as well as a beauty salon are also located inside the terminal.

Internet Accessibility

A free wireless LAN service is available within the terminal.

LCC Low Cost Carriers

There are several Airlines that have started low cost services in Japan. These LCC airlines have opened up once a heavily controlled industry and have made domestic and international travel to and from Japan more affordable. Making use of these services to see Japan and move between locations is highly recommended however it is important to realize that you are using a low cost service and some of the frills associated with air travel do not exist and schedules may change more frequently than that of regular carriers.

Low Cost Carrier services to and from the New Chitose Airport Domestic sectors include; Sapporo-Narita and Haneda, Sapporo - Chubu, Sapporo to Kansai, and Kobe, there are also flights available to Sendai, Niigata, Toyama, Komatsu. International sectors include; Sapporo - Incheon (Seoul) this sector is provided by a Korean carrier.

New Chitose (Sapporo) LCC Carriers

•Skymark

Sendai, Ibaraki, Narita, Haneda, Chubu, Kobe, Fukuoka

•Air do

Sendai, Fukushima, Haneda, Niigata, Toyama, Komatsu, Kobe, Okayama

•Peach

Kansai

•Jetstar Japan

Narita, Chubu, Kansai

•Air Asia Japan

Narita, Chubu

•Jin Air

Korea, Incheon (Seoul)

Airport Map

To download the Airport Map in PDF format in English follow the link below.

<http://www.new-chitose-airport.jp/en/tmap/>



Access (Rental Cars)

There are many transport options to get you to Niseko. This section contains information relating to transportation. More information on winter access to Niseko can be found at:

- Niseko Resort Tourist Association
<http://www.niseko-ta.jp>
- Niseko United website
<http://www.niseko.ne.jp/en/access/index.html>
- Niseko Town website
<http://www.town.niseko.lg.jp/english/access.html>
- Niseko Promotion Board
<http://www.nisekotourism.com/en/plan-your-trip/access-to-niseko/>

Car rental companies

There is a large selection of rental car companies to choose from. To rent a car you will require an international driver's license or Japanese driver's license. Cars are right hand drive and drive on the left-hand side of the road. Most vehicles including small vehicles are 4wd (sometimes a extra charge for a 4wd vehicle may apply, check upon reservation) and in winter you can elect to have ski racks installed on vehicles to make the transportation of ski equipment easier.

Caution

An international license allows you to drive up to an 8-seat vehicle. If you are planning on hiring a 10-seat minivan, then your international license needs to stipulate you can drive a passenger service vehicle (or a vehicle with excess of 8-seats) in order for your rental to proceed. Please check this point thoroughly to ensure you are not disappointed on arrival.

Rental car companies located at the airport:

Toyota Rent a Car POPLAR

- +81(0)123-23-0100
- <https://rent.toyota.co.jp/en/index.html>

Toyota Rent a Cat LILY

- +81(0)123-24-0100
- <http://www.toyota.com/rental/>

Nissan Rent a Car

- +81(0)123-27-4123
- <http://www.nissanrent.com/english/>

Honda Rent a Car

- +81(0)123-40-5353
- <http://www.hondarent.com/english/index.htm>

Sky Rent a Car

- +81(0)123-40-8887
- <http://www.skyrent.jp/hokkaido/>

JR Station Rent a Car

- +81(0)123-22-8321
- <http://www.ekiren.co.jp> (Japanese language only)

OTS Rent a Car

- +81(0)123-27-7000
- <http://www.ots-hokkaido.jp/>

Times Car Rental

- +81(0)123-45-8756
- <http://www.timescar-rental.com/>

Orix Rent a Car

- +81(0)123-22-0543
- <http://car.orix.co.jp/>

Nippon Rent a Car

- +81(0)123-26-0919
- <http://www.nipponrentacar.co.jp/english/index.html>

Executive Luxury Vehicles

Hokkaido Bubu

- +81(0)11-788-0011
- <http://www.bubu-rentacar.com/>

Exotic cars; European cars available for comparatively low prices. Staff speak English and English navigation systems are available in the vehicles. Rentals must be from New Chitose Airport to New Chitose Airport.

Rental Car Companies in Niseko:

Toyota Rent-a-Car

Niseko/Kutchan Branch

- Tel: +81(0)136 55 5501
- <http://toyota.rent-a-lease.com/english/index.html>

Times Car Rental

Niseko Higashiyama Branch – Hilton Niseko Village

- Tel: +81(0)136-44-1111
- <http://www.timescar-rental.com/>

Nippon Rent a Car

Niseko branch, Niseko Hirafu, Alpen Hotel

- Tel: +81(0)136-23-0919
- Fax: +81(0)136-22-2821
- <http://www.nipponrentacar.co.jp/english/index.html>

Second hand rental vehicles at cheaper prices

Hachiriki Jidousha Rental Cars

Central Niseko town

- Tel: +81(0)136-44-2640
- (No website - Japanese only)

Black Diamond Rental Cars

Higashiyama, Niseko Town

- Tel: +81(0)90-2055-6074
- <http://www.nisekoauto.com/>



Hokkaido Bubu
Executive Luxury Rental Car



尻別川 Shiribetsu River

Access (Train JR), Niseko Ski Express

**Japan Rail (JR)**

JR operates a train station at New Chitose Airport that connects the airport terminal to destinations all over Hokkaido. There are several types of train operating each day: Limited Express, Express and Rapid local services operate between New Chitose Airport and Kutchan/ Niseko (via Sapporo and Otaru - travel time between 2-3 hours, depending on time, type of connection and weather conditions).

The Hakodate Honsen line also connects Niseko to other major tourist destinations in Hokkaido such as:

Otaru:

Direct trains approximately every 1-2 hours
Travel time 1.5 hours approx.

Sapporo:

Transfer at Otaru station
Niseko Express Train and the Nupuri Winter Express Train operate in winter (see below for details)
Travel time 2-3 hours depending on connection.

Hakodate:

Transfer at Oshamambe station
Travel time approx 3 hours.

Downloadable Japan Rail information

JR Hokkaido operates an international website in several languages which includes information regarding timetables, ticketing and special offers.

Special Offers

- <http://www.jrhokkaido.co.jp/index.html> (Japanese)
- <http://www2.jrhokkaido.co.jp/global/index.html> (English)
- <http://www2.jrhokkaido.co.jp/global/chinese/index.html> (Traditional Chinese)
- <http://www2.jrhokkaido.co.jp/global/korean/index.html> (Korean)

Timetables in English:

- <http://www2.jrhokkaido.co.jp/global/english/ttable/04.pdf>
- <http://www2.jrhokkaido.co.jp/global/english/ttable/index.html>

(Time tables are updated yearly. Check JR's website for updated timetable information.)

Niseko Express

This train connects Niseko and Sapporo with a return service during heavy usage times over the festive period and at weekends. The service gives travellers coming to Niseko access to the variety of winter activities that Niseko is renowned for.

Dates of Service:

28th Dec 2012 - 31st Dec 2012

1st Jan 2013 - 6th Jan 2013, 12th Jan 2013 - 14th Jan 2013, 2nd Feb - 3rd Feb 2013

Winter Nupuri Express

Following on from the popular summer Nupuri Express, connecting Sapporo to Niseko and Oshamambe. Enjoy travelling through the winter scenery of the region, great for those wishing to visit the Sapporo Snow Festival or the Otaru Yuki Akari Festival or for access your favorite winter destinations.

Operates Daily from the 9th Feb 2013 - 11th Feb 2013

Niseko On Demand Shuttle Bus

There is a on demand shuttle bus service that operates in Niseko Town. **(Caution: Niseko town boundaries do not include the Hirafu Ski area)** To use this service you need to make a reservation in advance., the time that you wish to you the service, must be within the hours of operation for the service stipulated below and your point of pick up and drop off must be within the Niseko town boundaries. This service is a Shuttle service and not a taxi, expect to be sharing the service with other users.

• **Fare:** 200 Yen p.p (Infants and Children under High School age, persons carrying a Disability Passport and Handicapped persons are FREE OF CHARGE)

• **Hours of Operation:** 8:00am - 19:00pm Daily - (Public holidays incl)

• **Reservations:** Reservations accepted between 8:00am and 18:00pm

Reservations can be made up to 1 week in advance of time of travel.

• **Area of operation:** Within Niseko Town boundaries

(Goshiki Onsen (HotSpring) is excluded. Konbu Station and Konbu Hospital area are included)

Reservations: 0136-43-2200

All Reservations must be made in Japanese,

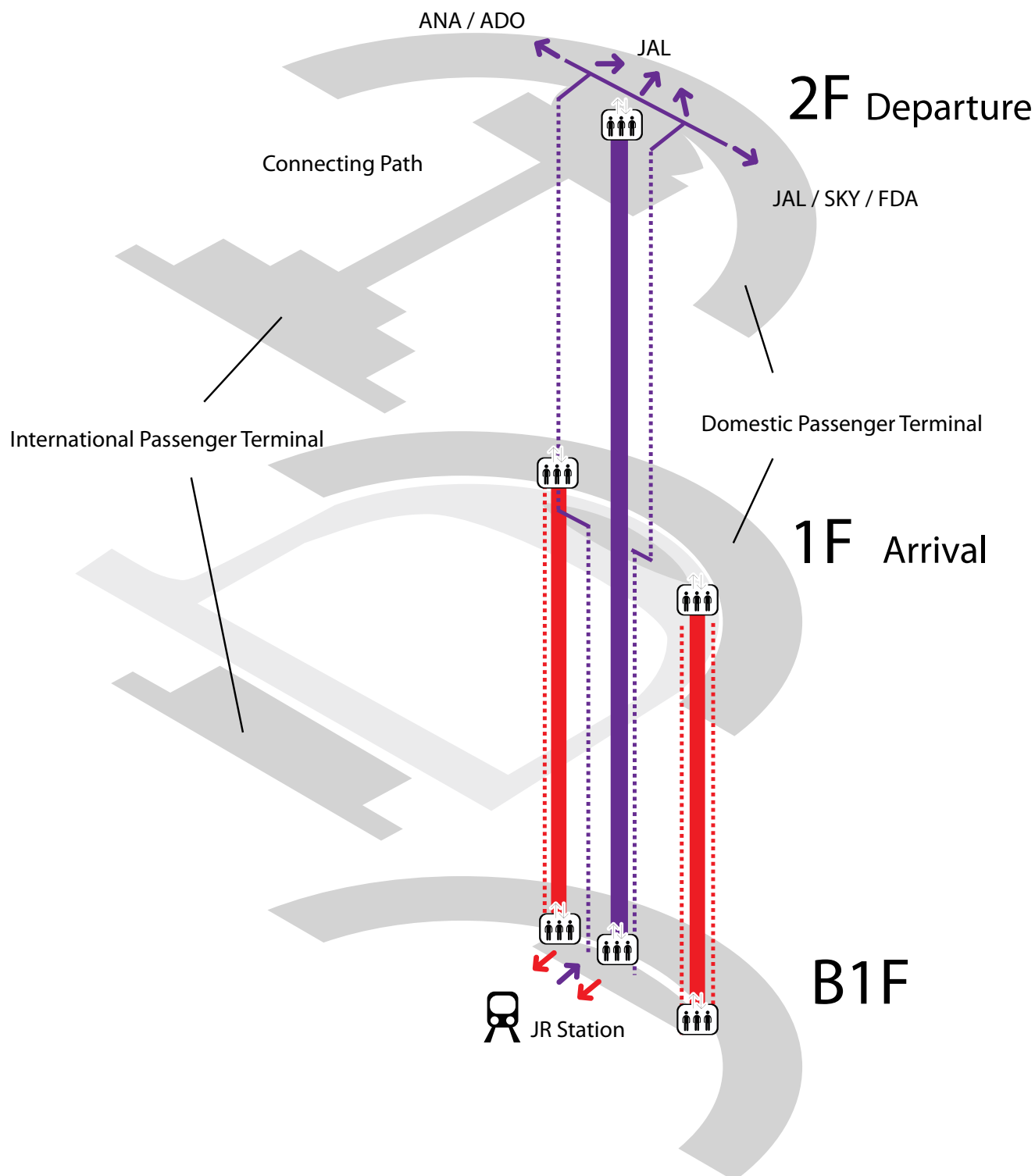
New Chitose Airport JR Station Access information

JR Train Connections

From the 1F Arrival Lobby, follow the red arrows → to the Domestic Passenger Terminal B1F JR Station

To Airline Counters

From the B1F JR Station, follow the purple arrows → to the Airline Counters



Kutchan and Niseko JR Station location maps, Kutchan and Oshamambe platform information

Niseko Station Location

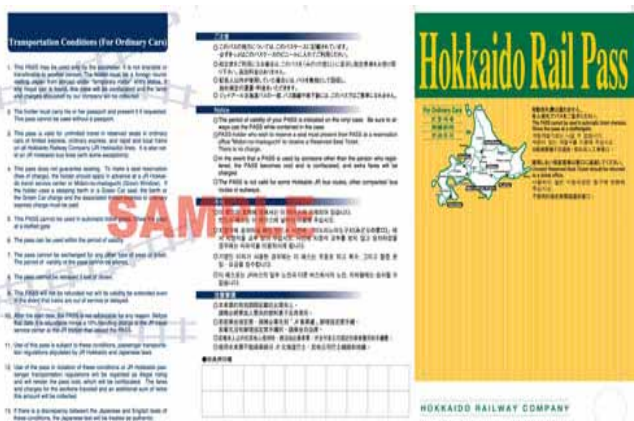


Kutchan Station Location



Niseko Station

Inside Niseko Station waiting area there is a popular local café, toilet facilities, local souvenirs and free WIFI internet access. If you are staying at Hilton Niseko Village or other major hotels in Niseko, Niseko ion provides easier access to your accomodation.



JR Hokkaido Railpass

There are many ways to access Niseko, one of the most popular methods is by rail. JR Hokkaido have just made this process a lot more affordable and by offering a Hokkaido Railpass aimed at international visitors.

The cost for the pass which allows access to JR Hokkaido lines for a period of 3 to 7 days is between 15,000 yen PP and 30,000 yen PP resulting in large savings. Access is available to Niseko from Sapporo on the Hakodate main trunk line, via Otaru, Niki, Kutchan, the views from the windows on the trains are outstanding, give rail a try!

To purchase the pass you need to have a Tourist visa and present your passport at the ticketing counter.

JR Railpass Information

<http://www2.jrhokkaido.co.jp/global/english/railpass/application.pdf>

To make processing for your JR Hokaido Railpass quicker, please fill in the application form which can be downloaded online and take it to the ticketing counter at a major station or travel agency that handles JR reservations.

• <http://www2.jrhokkaido.co.jp/global/english/railpass/rail01.html>

International offices which handle JR Hokkaido Railpasses

<http://www2.jrhokkaido.co.jp/global/english/railpass/pdf/05.pdf>



Access (Bus)



Express bus services from New Chitose Airport to Niseko

Travelling by bus is one of the most cost-effective forms of transport from the airport in the winter. Buses depart about every 30 minutes from the airport to various drop-off points located in the 3 major areas within the Niseko District - Grand Hirafu, Niseko Village and Annupuri. Allow up to 3 hours travel time. Most services include a refreshment stop mid journey at Michinoeki Forest 276. Some services travelling the route will drop off at the Rutsutsu Resort area.

One way fare is around ¥2300.

(Children occupying a seat are required to pay an adult fare)

Companies offering services

The bus companies operating the New Chitose Airport to Niseko route are as follows;

- Whiteliner - Good Sports
- Donan Bus - Donan Bus Company
- Chuo Bus/ Niseko Bus - Chuo Bus/ Niseko Bus
- Hokkaido Resort Liner - Hokkaido Access Network
- Big Runs - Niseko Ground Services

Companies operating the Sapporo City to Niseko Route are as follows;

- Donan Bus - Donan Bus Company
- Niseko Bus/ Chuo Bus - Chuo Bus Company

(The cost for all of the services is very similar and the time to travel to Niseko is also similar.)

- Advance Reservations are recommended and can be made using a credit card online or over the telephone.
- Depending on seat availability, reservations can be made up to the day of travel. (Advanced bookings eliminate disappointment.)
- If payment was not made at the time of booking, then payment is required in cash when boarding the service. The fare is paid to the driver; ensure you have the correct change to avoid delays and causing inconvenience to other passengers.

Access (Bus Company Contacts)



Bus company contact details (operators may not speak English)

Whiteliner Buses:

Tel: +81(0)11-242-2040

(Start drop-offs in the region at Hirafu)

Drop off order in Niseko: Hirafu Welcome Center (#1 car park), Hilton Niseko Village, The Green Leaf Hotel Niseko Village, Niseko Northern Resort Annupuri, Hotel Kanronomori, and Niseko Grand Hotel. Expect a difference in arrival times of up to 40 minutes, if you are staying in the Konbu area of Niseko. (Dependent on number of users)

Note: Passengers who are travelling on this service to the New Chitose Airport, pick ups start at the Niseko Grand Hotel.

- <http://www.goodsports.co.jp/eng/whiteliner/new-chitose/index.html>
(Services are available from Sapporo City.)

Chuo Bus/Niseko Bus:

Tel: +81(0)11-231-0500 (Service from Sapporo City). Chuo Bus also operates a direct airport service in summer, but not in winter.

- <http://www.niseko-bus.cbbs.co.jp/>

Donan Buses:

Tel: +81(0)123-46-5701 or + Tel: 81(0)123-46-5701
(Services are available from Sapporo City.)

Hokkaido Resort Liner:

Tel: +81(0)11-219-4411

Drop off order in Niseko: (Via Rutsutsu Resort) Hirafu Welcome Center (#1 Car park), Hilton Niseko Village, The Green Leaf Hotel Niseko Village, Niseko Northern Resort Annupuri, Hotel Kanronomori, Niseko Grand Hotel and Hotel Ashiri Niseko) For passengers departing for New Chitose Airport from Niseko. Pick-ups start from Hotel Ashiri Niseko.

- <http://www.access-n.jp/winter/english/>
(Services are available from Sapporo City.)

Big Runs:

Tel: +81(0)136-21-2503

Big Runs only drop off and pick up at the Welcome Center (#1 car park) in Grand Hirafu for Niseko bound passengers

- <http://www.nisekogroundservice.com/images/2012-2013-Season-BigRunsBusTimetable.png>
(Services are available from Sapporo City.)

Access (Chartered Coach)



Niseko Bus

For further details, coach types and prices please contact the company directly or refer to their website (Japanese only):

<http://www.niseko-bus.cbbs.co.jp/>

Hokuto Bus

Large buses and 10 seat vehicle charters available.

http://www.hokto.co.jp/chitose_niseko/en/index.html

Niseko Shuttle Bus

Late model fleet of vehicles, "Door to Door" service, co-operative of different local transportation companies, affordable pricing.

<http://can-niseko.com>

Sky bus

Late model fleet of vehicles. "Door to Door", SIC (seat in coach service) available, advanced reservation and payment system, experienced in dealing with tour operators and can move both FIT and groups.

<http://skybus.co.jp/en/>

Niseko Premium Shuttle

Stylish and versatile, Niseko Premium shuttle offers services using Mercedes Benz or the latest Toyota Hiace Communter vans and Hybrid vehicles.

Tel: +81(0)136-44-2640

Yotei Hire

Coach Charters and 10 seat charters available, can assist with sightseeing options as well; drivers can understand English and are experienced in dealing with overseas visitors.

<http://www.yohteijp/>

Smile Kanko Taxi

Late model fleet of coaches available as well as late model 10-seat minivan charters, reasonable rates.

<http://taka6419corona.web.infoseek.co.jp/smilekanko.htm>
(Japanese Language only)

Cool Star

Microbus fleet converted to luxury limousines. Each vehicle's interior is similar to that of a private jet. Minibar service and DVD options available, vehicles are equipped with toilet facilities great for long distance travel or for impressing that special client. Preferred carrier for many VIP clients.

Cool Star video

<http://www.cool-star.jp/movie/japanese01.html>

<http://www.cool-star.jp/> (Japanese)

http://www.cool-star.jp/concept_e.html (English)

Other information is available in chinese the link can be found at the top of the Coolstar website .

Essential information (Emergency Services)



Emergency Services

Emergency Police	Dial 110
Ambulance	Dial 119
Fire	Dial 119
Kutchan Main Police Station	Tel: +81(0)136-22-0110
Niseko Police Box	Tel: +81(0)136-44-2251

Hospitals

JA Kutchan Kousei Byouin

Hokkaido, Abuta gun, Kutchan cho, Kita 4 Jyo Higashi 1-2
Tel: +81(0)136-22-1141

For more detailed hospital information in English check the hospital website.

<http://www.dou-kouseiren.com/byouin/kutchan/english/index.html>

Downloadable hospital procedures

<http://www.dou-kouseiren.com/byouin/kutchan/english/examination/index.html>

Important emergency services information.

- All people who have symptoms that can be assisted by a family member will be seen during normal clinic operation times by a specialist practitioner. If your symptoms are persistent then the hospital will see you out of clinic hours up until 21:00 pm.
- On Saturdays use medical clinics that are located in the Kutchan Town area for medical consultations. The hospital will not accept general clinic visits in the morning; however the hospital will accept general medical consultations in the afternoon from 13:00 pm up until 21:00 pm.
- After 21:00 pm critical and ambulance emergencies will take priority and general consultations will be refused.
- There are 3 english medical translators and one chinese/korean translator available at the hospital between the 12th Dec 2011 and 31st March 2012 (Current as Dec 2011).
- The hospital recommends patients bring their own translator to avoid delays.

Niseko Hospital

Hokkaido, Abuta gun, Niseko Town, Fujimi 2

Tel: +81(0)136-44-2201

(Limited services available - translation by own arrangement necessary)

Dentists

Niseko Shika (Dental Clinic)

Hokkaido, Abuta gun, Niseko cho, aza Arishima 8-136

Tel: +81(0)136-43-2225

Kikuchi Shika In (Dental Clinic)

Hokkaido, Abuta gun, Niseko cho, aza Fujimi 49

Tel: +81(0)136-44-1120

Other medical clinic information

There are wide range of specialist medical practitioners located in Kutchan Town.

Sato Clinic for Internal Diseases	Tel: +81(0) 136-22-6122
Nakagawa Clinic	Tel: +81(0) 136-22-1707
Ueda Orthopedic Hospital	Tel: +81(0) 136-22-1386
Kutosan Surgical Digestive Organ Clinic	Tel: +81(0) 136-21-6410
Shiribeshi Ear, Nose and Throat Clinic	Tel: +81(0) 136-21-3387
Taiyo Clinic	Tel: +81(0) 136-21-5600
Yotei Children, Allegy Clinic	Tel: +81(0) 136-22-6633
Kutchan Azuma Eye Clinic	Tel: +81(0) 136-23-1146

Essential Information (Banking/ Postal)



Currency

The yen (¥) is the currency of Japan. There are 4 types of notes and 6 different coins in circulation:

Notes: 1,000, 2,000, 5,000 and 10,000.

Coins: 1, 5, 10, 50, 100 and 500

Cash is the most common form of payment in Japan. However, credit cards are now also widely accepted at many locations in Niseko

Travelers' checks in yen or US dollars are easily exchanged for cash at the banks, but are not readily accepted at small shops and restaurants. You can exchange foreign currency for yen at major trading banks, main post offices and international airports.

Banks/Money Exchange

We recommend that you exchange money in Sapporo at the New Chitose Airport. If you wish to use an international ATM, there is a Citibank ATM on level 2 of the domestic terminal building. This ATM accepts many international cards.

Hokkai Shinyokinko

- Niseko Branch - Abuta gun, Niseko Cho, Hon doori 70
- 09:00 am - 15:00 pm
- ATM 8:45 am - 18:00 pm (foreign cards not accepted)
- Tel: +81(0)136-44-2111

Hokuyo Ginko (North Pacific Bank)

- Kutchan Branch - Kutchan cho, Kita 1 jyo, Nishi 1Chome,18
- 9:00 am - 15:00 pm ATM 8:45 am - 18:00 pm (foreign cards not accepted)
- Tel: + 81(0)136-22-0181

7-Bank (7 Eleven Convenience Store)

- There are three 7- Bank ATM machines in the district;
- 2 located in central Kutchan Town and 1 located in Niseko Town,
- Check local maps for locations.
- The ATM's accept VISA, MasterCard, American Express, JCB, China Union Pay, PLUS, Discover or Cirrus cards.
(although not non-rectangular shaped cards).
- Hours: 24 hours 7 days a week (Closing times vary by card type.)

Postal Services

Niseko Town Post Office

Hokkaido, Abuta gun, Niseko cho, Hon Doori 103-1

ATM: Domestic use only

Weekdays	8:45 am to 18:00 pm
Sat:	9:00 am to 17:00 pm
Sun/Public Holidays	9:00 am to 14:00 pm

Business Hours

Weekdays	9:00 am to 17:00 pm
Weekends	No Service

Public holidays Post offices are closed

Note* There may be restrictions on the different accounts you can access for different banks and networks. If unsure, ask your accommodation provider to call the post office to check restrictions.

District Main Post Office (Kutchan)

Hokkaido, Abuta gun, Kutchan cho, Minami 1 Higashi 1-12

The ATM accepts, Visa, Visa Electron, Plus, MasterCard, Maestro, Cirrus, American Express, Diners Club, JCB, China Union Pay.

Business Hours

Weekdays	8.45 am to 19:00 pm
Weekends	9:00 am to 17:00 pm
Public holidays	Post offices may be closed

Note* There may be restrictions on the different accounts you can access for different banks and networks. If unsure, ask your accommodation provider to call the post office to check restrictions.

Essential Information (Public Holidays/ Useful Services)



Public Holidays in Japan

Gantan	New Year's Day	Celebrations for the New Year
Seijinshiki	2nd Mon in Jan	Coming of age Ceremony.
Kenkokukinenbi	11th Feb	National Foundation Day
Shunbun	21st Mar (Changes)	Coming of Spring
Showa Day	29th Apr	Showa Day
Constitution Day	3rd May	Japanese Constitution Day
Green Day	4th May	Green Day
Children's Day	5th May	Children's Day
Umi no hi	3rd Mon in Jul	Ocean Day
Keiro no hi	3rd Mon in Sep	Respect for the Aged Day
Shubun no hi	23rd Sep(Changes)	Autumn Equinox
Taiku no hi	2nd Mon in Sep	Health and Sports Day
Bunka no hi	3rd Nov	Culture Day
Kinro kansha no hi	23rd Nov	Labor Thanksgiving Day
Tenno no tanjoubi	23rd Dec	Emperor's Birthday

Telephone Calls

Domestic Calls

Green and grey public phones (only grey phones can be used for international calls) take coins or pre-paid telephone cards, available from convenience stores or at some phone card dispensers in some booths. The area code for Niseko is "0136"

International Calls

International calls can be made using any of the following prefixes, 001 (KDDI), 0041 (ITJ) and 0061 (IDC). Costs will apply. When calling overseas from your hotel ensure to check with reception first on the requirements for making an international call.

Domestic Directory Assistance

Dial 104 (charges apply) and then ask for an English speaker. You will need an address and a name to get a number.

Language

Japanese is the main spoken language in Niseko. However, recently with the areas growth in popularity, both English and Chinese are now spoken in many parts of Niseko and many of the local restaurants have menus in Japanese, English and Chinese.

Time Zone

Niseko is located at 42°50'46" North, 140°41' 4" East Region, Hokkaido Japan. The time in Japan is 9 hours ahead of GMT. There is no daylight savings scheme in Japan.

Catholic Church

There is a Catholic church located in Kutchan.

Address: Hokkaido, Abuta gun, Kutchan cho, Kita 5 Jyo, Nishi 1 Chome

Tel: +81(0)136-22-1099

Library

Asobook Library is located in Central Niseko Town opposite the Council Chambers. There is ample car parking in front of the building.

There are novels and childrens books available in English and Chinese and the library provides a warm and welcoming space to pass time on a day where the weather conditions prevent outdoor activities. The library operates many fun programs and everyone is welcome to participate.

Library Hours: 10:00 am to 18:00 pm

Closed: Every Monday, National holidays, New Year's holidays, 4th Friday of every month.

Library Card

If you live, work or are on a long-term holiday or a student in Niseko, you can get a library card to enable you to borrow books. Please collect a library card application form from the librarians desk. The library card is issued immediately.

Internet

There is a computer corner with 2 terminals that can be used in the public library, these terminals can be used free of charge and depending on their usage up to a maximum of 30 mins per session.

Baby Sitting, Childcare Service

Experienced 'in home' childcare and babysitting services for locals and visitors within and around the Niseko area.

No matter what age, a range of educational games, toys and dvds are available to keep your children entertained while you enjoy a day out on the slopes, a relaxing afternoon with friends, or a romantic evening for two.

Tel: +81 (0) 90-7053-1802 N-Souls

email: info@win-dol.com

Essential Information (Courier Services)



Courier Services (Takuyaubin services)

This is a comprehensive list of all Japanese courier services (takuyaubin) operating in and out of New Chitose airport, as well as hotels and locations all over Japan. Services normally take 2 days, however delivery to locations within Hokkaido normally takes 1 day.

Yamato Transport:

- Tel: +81(0)120-01-9625
- <http://www.kuronekoyamato.co.jp>
- (Operating Hours 8:00 am - 21:00 pm) 365 days of the year. Yamato guarantees shipping to anywhere within Japan up until the next business day (for exceptions please see their website). There is a choice of a prepaid service or a pay on delivery service (Chaku barai) Please note that the forms are different for each service. How to send a package with Yamato:
- 1) Pick up a special address label at one of their offices or your accommodation provider. Parcels can be collected from a pre-decided location or at a local convenience store or by dropping the parcel at a Yamato office.
- 2) Delivery of refrigerated goods as well as sports equipment (golf takuyuubin, ski takuyuubin) is also possible. Luggage transfer possible between 32 airports within Japan.

Nippon Express

- <http://www.nipponexpress.com> (Japanese: www.nittsu.co.jp)
- Worldwide freight service (air, ship, land transport).
- Refrigerated transport for perishable cargo available.
- Range of specialized transport solutions (moving service, fine arts transport, etc).
- Operates out of all major airports within Japan.

Sagawa Express

- <http://www.sagawa-exp.co.jp/>
- National express services, air transport, refrigerated delivery, etc.
- Time, place and payment methods are very flexible.
- Air transport usually takes one business day.
- Sagawa forms and stickers are available at Sagawa's offices and agents all over Japan.
- Packages are picked up at pre-arranged locations.
- 50 distribution centres all over Japan
- Operates into and out of New Chitose Airport.

Sagawa Global Logistics

- <http://www.sagawa-sgl.com/english/>
- Shipment solutions for cargo within Japan or worldwide by air, ship or overland route.
- Air cargo is managed via Narita International Airport.
- Operates out of New Chitose Airport.

JAL ABC: Airport Baggage Delivery Service

- There are 4 ABC counters in Japan, Narita, Haneda, Chubu, and Kansai.
- Luggage is picked up and then shipped to the airport of your choice and is available for collection before your flight from the ABC counter
- Information brochure
- <http://www.jalabc.com/common/pdf/airport.pdf>

Travel Trade Resources

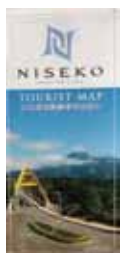


The promotional material listed on this page is produced in Niseko in various key languages. This information is downloadable from the internet in some cases and can be provided upon request. The material includes pamphlets, maps and a promotional DVD providing insight into Niseko Town. It is important to note that this information is available at local information centres and information counters in Chitose and Sapporo as well as Tokyo and in some cases the Japanese National Tourism Organization's offices overseas. <http://www.jnto.go.jp>



Niseko Tourist Guide

English and Japanese – a comprehensive Niseko guide, complete with information on the history of Niseko and a vast range of locally produced souvenir products.
(Produced Dec 2011 – current)



Niseko Tourist Map

English and Japanese – easy to understand map and handy reference chart.
(Produced Dec 2011 – current)
Downloadable in eco-friendly PDF format
<http://www.niseko.lg.jp/event/2011/12/001617.html>



Niseko Foreign Language Pamphlet

Available in English, Cantonese, Pekinese, Korean and is downloadable in eco-friendly PDF format to send to conference delegates or valued clients.
<http://www.niseko-ta.jp>
(Produced Nov 2010 - current)



Niseko Onsen Map (Hot Spring)

Available in a Japanese/ English bi lingual format, explains the Hot Springs of the district.
(Produced Oct 2012- current)
Downloadable in eco-friendly PDF format
• <http://www.niseko-ta.jp/blog/images/onsen-map-data2012.pdf>

Niseko Footpath Maps



Selection of 3 Maps that outline different areas in Niseko to walk and soak up the atmosphere that this beautiful town has to offer in the green season. (Maps Available in Japanese only, easy to understand)

1. Tahata to fuukei no sato michi (Fields and Scenery hometown route) (Aqua)
2. Shizen to rekishi no michi (Nature and History course) (Blue)
3. Bungaku/ rekishi sanpomichi (Wine Red)
(Produced Oct 2011 – current)

Niseko Cycling Map



Available in Japanese only - a comprehensive cycling map with explanations of different areas on route. Made from a resilient material that will not rip or ruin in wet weather, this map is perfect for enthusiasts.
(Produced in Jul 2013)

Niseko Goshiki Onsen Information Center



Available in Japanese only, this pamphlet outlines the services available in the new mountain information center which opened in June 2013 at Goshiki Onsen.
(Produced in Jun 2013)

Travel Trade Resources



Niseko Promotional Map

(English and Pekinese available) A great resource if you are doing a presentation on Niseko; great imagery and an easy to comprehend landscape of the area.
(Produced Apr 2010 – current)



Niseko Express (Japanese Only)

A comprehensive Niseko guide, complete with information on the history of Niseko and a vast range of locally produced souvenir products. This magazine is published every year as a joint project by the towns that are associated with the Niseko ranges.

(Produced Dec 2011 – current)



Niseko promotional DVD

(Japanese subtitles, Chinese subtitles) You Tube version is viewable by doing a search on You Tube for; Niseko.wmv
(Produced June 2011- current)



Niseko Area Guide and Niseko Resort Map

A guidebook and map that covers a large selection of restaurants and activities in the wider Niseko district, this guidebook is put out by the Niseko promotion board. This publication is released every year in late November to early December and can be obtained from local information centres and accommodation providers. The Resort map can be downloaded in eco-friendly PDF format at

- http://www.nisekotourism.com/en/special/access/Vmap_en1206.pdf (英語)
- http://www.nisekotourism.com/files/access/Vmap_jp1206.pdf (日本語)

(Information available in Japanese and English)

(Produced Nov 2012 – current)



Niseko Monozukuribito

(Japanese only available in printed version, English translation is available upon request) A great insight into the "Arts and Artisans" of Niseko.

(Produced Apr 2011 – current)



Niseko Resident's Guide

(English and Japanese) (Chinese and Japanese)
Handy tips for living in Niseko Town.
(Produced Oct 2011 – current)



Niseko Lakes and Moor Exploration Map



Available in Japanese only, this map is an invaluable resource for people who enjoy hiking in the outdoors.

(Produced Dec 2012 – current)



Four Seasons | Spring



In spring as soon as the snow starts to ease, the sun breaks through and Mother Nature works hard to change the palette from an intense and chilly white to warm greens and browns. The vibrant colours of the new spring growth create a fresh, yet almost Autumn-like palette of colour that is quite unique to Hokkaido. This is known as “Harukoyo” and is a phenomenon not to be missed. The mountains appear to grow metres in a day as the new growth appears on the trees. Sleepy rivers turn into raging torrents and water-based activities, Rafting, kayaking and canoeing begin. Labour in the fields also increases daily and the people of the district relish in the greenery that they have been anticipating for almost 6 months.

April to June

Temperatures: Average temperatures 3.3 degrees to 19.6 degrees

Conditions/Clothing: Cold in the evenings, snow melt is fast.

Good Spring skiing is on offer until the beginning of May.

Bring warm clothing . Layer your clothing as it can also get quite warm.

Weather Information: <http://www.jma.go.jp/en/yoho/306.html>

Look out for: Cherry Blossoms flower just after Golden Week in May, bring your camera.

Spring Events

Golden Week (May):	Niseko Sakura Week - Various locations in Niseko.
Early May:	Niseko Panorama line, winter road closure ends – Route 66
Up to Sep:	Flower appreciation in Niseko – Potato Kyowakoku
Early Jun:	Niseko Weiss-Horn – Opening of Shinsen Numa Recreation Forest Park- Weiss-Horn, Shinsen Numa
First Sun Jun:	Niseko Mountain trails officially opened for summer trekking – Goshiki Onsen (hotspring)
First Sat & Sun:	Niseko Sky Rally - Paraglider – Niseko Annupuri – Niseko Annupuri and surrounding venues.
Mid Jun:	Mt Yotei trekking trails officially opened, at the start point for all four trails.
Jun to Oct:	Niseko Annupuri Summer Gondola service opens – Annupuri International Ski Field, Grand Hirafu Gondola.
Late Jun:	Grand Hirafu unveiling fiesta – Grand Hirafu

Please note event dates may change without notice.



Summer in Niseko is different to summer in other parts of Asia. The temperatures remain bearable and the days are long. This allows visitors to the region to enjoy an endless variety of outdoor activities and leisure pursuits. For the district's farming community, the summer brings with it a feeling of achievement. Crops planted in spring are harvested and sold at local farmers markets and the menus in local restaurants come alive with fresh local produce. Activities available include golf, mountain biking, road cycling, tennis, rafting, kayaking, swimming, hiking, hot air ballooning.

July to August

Temperatures:	Average temperatures – 18.2 degrees to 20.6 degrees.
Conditions/clothing:	Warm and balmy with cooler temperatures in the evenings. Light clothing and light jackets necessary. Rainfall possible, rainwear recommended and sun protection is a must.
Weather Information:	http://www.jma.go.jp/en/yoho/306.html
Look out for:	<p>Sunflower fields and other mountain flowers bloom, making the district great for photographers and people who enjoy trekking. The crops start producing results, great farmers markets, and a great variety of fresh produce.</p> <p>Niseko View Plaza Michinoeki, Farmers Market (Chokubaikai)</p> <p>Website: http://vpla.snow.ne.jp/traninfor/modules/portal/portal.php (Japanese Only)</p> <p>Tel: +81(0)136-44-3433</p>

Summer Events

July first Sat:	Fresh Green Festival – Kutchan Nishi Elementary School, Kabayama Campus
Early July - Mid Sep:	Niseko Flower Festa – Kirakaido (Main Street, Niseko Town)
7th July:	Gaia Night Shiribeshi – Shiribeshi Prefectural Office Kutchan
Early Jul:	Kutchan Waraizake Festival – Kutchan Town Centre
Early Jul:	Hanazono MTB cup – Hanazono Ski Field
Mid Jul:	Shakoi Kyogoku – home of the finest spring water – Kyogoku Town Fukidashi Park
Late Jul:	JGSDF Camp Kutchan Anniversary Event, Summer Cross Country Competition, JGSDF Camp, Kutchan
Late Jul:	Kutchan Shrine Festival
Early Aug:	Annupuri Star Festival Week – Niseko Annupuri International Ski Field
Around start of Aug:	Niseko Tanabata no Yuube, Fireworks Display – Niseko Town Athletics Track and Field
Around start of Aug:	Kutchan Potato Festival/ Fireworks Display, Kutchan Station Street
Around start of Aug:	Iwanai Furious Festival/ Fireworks Display – Culture Centre Special Site
Around start of Aug:	Makkari Flower Festa – Michinoeki Makkari Flower Centre.
First Sun Aug:	Niseko View Plaza Farmers Market Anniversary Event – Michinoeki Niseko View Plaza
First Sun Aug:	Kyogoku Hometown Festival Fireworks Display
20th Aug:	Hirafu Festival
25th Aug:	Kaributo Shrine Festival

Please note event dates may change without notice.

Four Seasons | Autumn



Autumn is incredibly beautiful; the temperatures plummet at night causing a kaleidoscope of colour on the surrounding mountains. Autumn in Niseko is harvest time and this translates to a wide variety of fresh produce. When the temperatures drop, the sugar levels rise in the produce and the food in the area is at its tastiest. If you enjoy the outdoors, the mountains continue to beckon as in spring and summer, the cooler conditions also make a brisk mountain walk or a stroll through town very inviting.

September to October

Temperatures: Average temperatures 8 degrees to 17 degrees

Conditions/Clothing: Temperatures plummet in the evenings causing fiery autumn displays of color in the surrounding national parks. Layered clothing is recommended on some days as it can still be quite warm. Jackets become increasingly needed. First snow is around the end of October, but doesn't settle until December.

Weather Information: <http://www.jma.go.jp/en/yoho/306.html>



Autumn Events:

Early Sep – Early Oct:	Niseko Festival - An extravaganza of events and fabulous local foods – various venues
Mid Sep:	Niseko Gravity Camps (Mountain Bike Event) – Grand Hirafu Area
Late Sep – Early Nov:	Niseko Steam Locomotive- Sat, Sun, public holidays – JR Hokkaido
Mid Sep:	Niseko Marathon Festival – Niseko Town Track and Field Stadium
Late Sep:	Niseko Festival Kira Twinkle Market – Kiranoyu Hot Spring Car Park
Early Oct:	Niseko Festival – Niseko Halloween – Annupuri International Ski Field – Nook Ski Centre
Early Oct:	Niseko Festival – Autumn Niseko Marché – Annupuri International Ski Field – car park
Mid Oct:	Niseko Town Industry Festival – Niseko Chomin Centre
Late Oct – Nov 3rd:	Niseko Town cultural festival – Niseko Town Chomin Centre

Please note event dates may change without notice.

Four Seasons | Autumn
Events Niseko Steam Locomotive



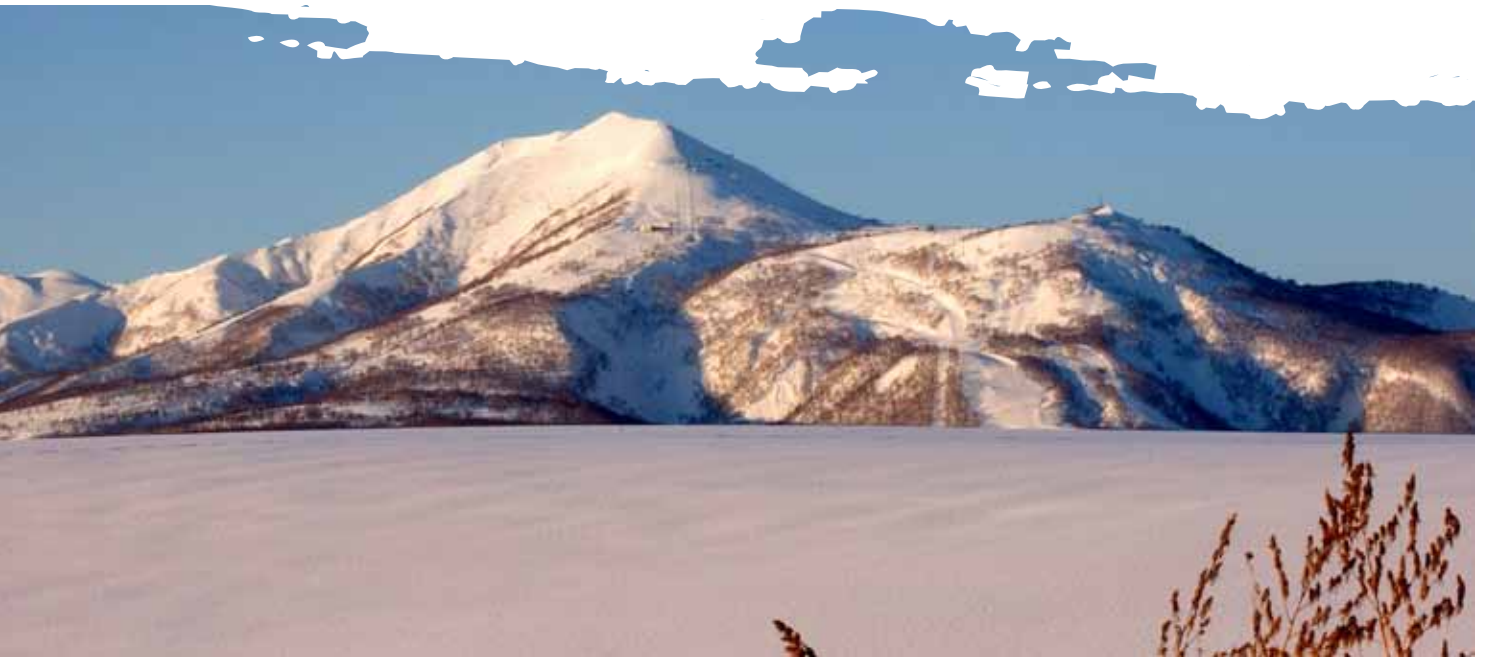
The Niseko Steam Locomotive (SL) Train operates every year in Autumn between August and November on Saturdays, Sundays and on public holidays and provides visitors to the area with a nostalgic journey into the past. The authentic whistle and gushing steam add to the excitement. This tourist orientated service by Japan Rail Hokkaido takes passengers on a fun-filled journey from Sapporo to Niseko or for a joy ride between Kutchan and Niseko and on to Rankoshi before returning to Sapporo.

The interior of the train is fitted out in authentic period style and you can soak up the elegance of the Showa Era of Japan. The train conductor and all of the cabin attendants are friendly and helpful and are more than happy to take your photos and answer your questions. Seats on this service between Sapporo and Niseko are by reservation only.

However, seats between Kutchan, Niseko and Rankoshi are unreserved and you can purchase a ticket at the individual stations and enjoy an excursion through the autumn colors that Niseko is famous for.

• <http://www2.jrhokkaido.co.jp/global/pdf/e/ml201108.pdf>

Four Seasons | Winter



When winter comes, in many parts of the world people go into hibernation. Niseko is the opposite: When winter arrives, the fun starts, the people of the district that have been working hard in the fields have a chance to play. Skiing, snowboarding, snowmobiling and snow sculpture make up only a few of the outdoor activities on offer. After all of the winter action activities, there is nothing like a soak in a local hot spring. While you are here in winter, another activity with a difference is a guided nature tour on snow shoes with a local guide. Test your knowledge of the local wildlife and have a great time.

In what seems like a flash, the district changes from a lush green paradise to a sparkling silver world, blessed with the world's finest powder snow, there certainly is no shortage of the white stuff. Needless to say the skiing is second to none; there are endless transport options to get around the district. In the winter Niseko comes alive and the restaurants and bars across the district are filled with a mix of languages and lots of excitement about the great times on the slopes. Become part of the Niseko legend this year.

November to March

- Temperatures:** Average temperatures — 1 degrees to -5 degrees (Temperatures at 188m above sea level)
- Conditions/Clothing:** Sturdy Footwear and extra warm clothing needed when outdoors. The actual mountain temperatures are a lot colder.
- Weather Information:** <http://www.jma.go.jp/en/yoho/306.html>

Four Seasons | Winter Events

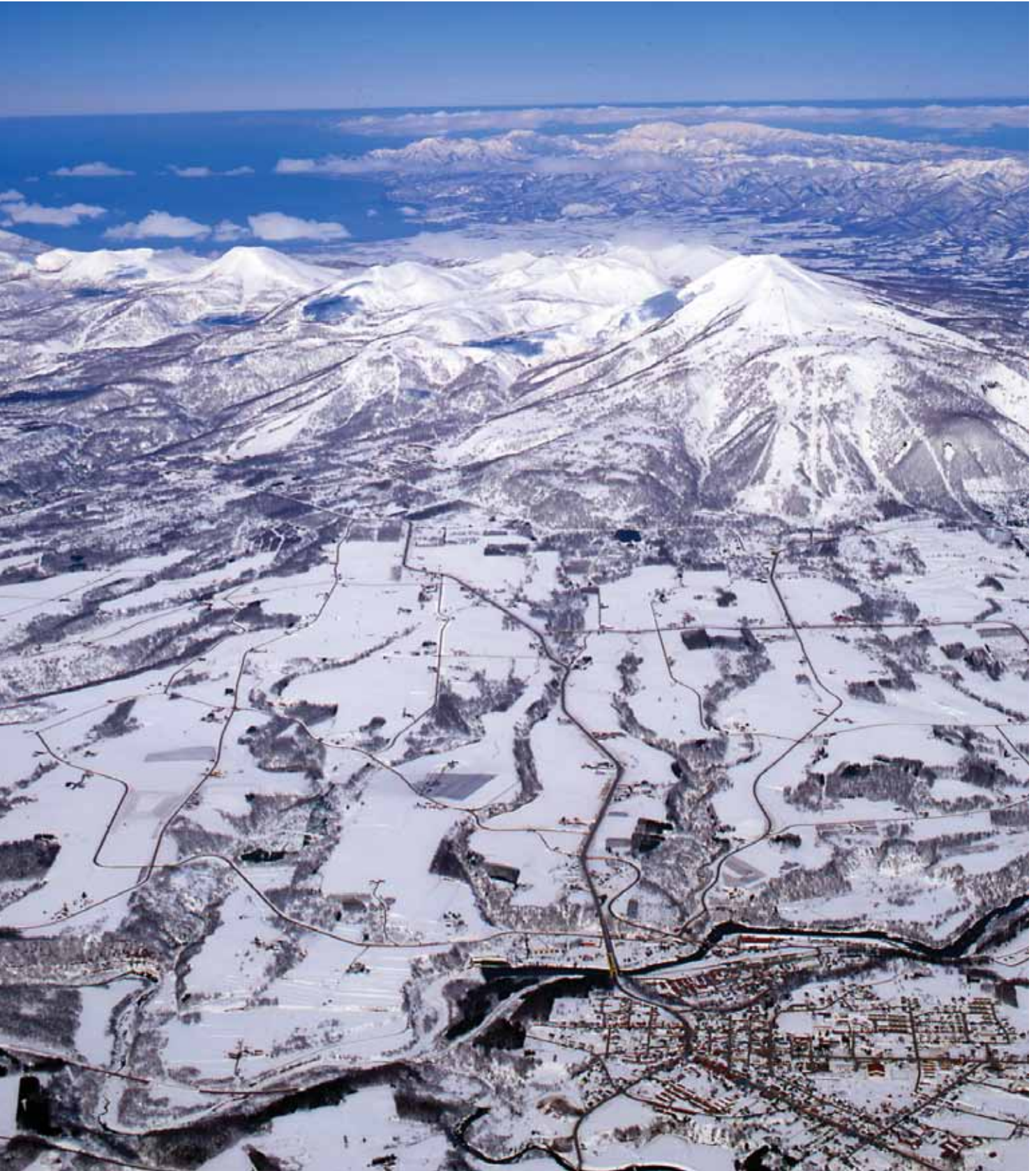


Winter Events

Early Nov:	Mikaku Festa (Food Festival) – Hilton Niseko Village
Late Nov:	Early Dec: Ski resorts open for the season
Dec:	Christmas Candle Event – Main Street in Hirafu
Dec:	Christmas Event – Gifts handed to children at the Ski field – Niseko Annupuri International Ski Field
Dec 31st:	New years Eve Torchlight Skiing and New Years Eve Countdown - Grand Hirafu Ski Field
Jan:	Torchlight Skiing, Fireworks display – Niseko Village
Jan:	Scenic Night: – Candle night – snow sculptures
Jan:	New Years Gondola, first sunrise – Niseko Village
Jan:	Traditional Breaking of a Sake Barrel and Rice Cake Making experience – Grand Hirafu Ski Field
Jan 1st to 3rd:	First Runs and Free Hot Milk – Annupuri International Ski Field
Early Jan:	Hokkaido Ski and Snowboard week – All Resorts
Late Jan:	Niseko Winter Music Festival – Kutchan Community Hall
Late Jan:	Kiss mark Cup, junior snowboard half pipe event – Hanazono Ski Field
Late Jan:	Early Feb: Scenic Night (around 12th, 13th)
Early Feb:	Sapporo Snow Festival – Sapporo City Centre
Mid Feb to End Mar:	Niseko Treasure Hunt- Local Accommodation providers
Mid Feb:	Yukitopia Festival – Kutchan Town Chuo Koen, Grand Hirafu Ski Field
Mid Feb:	Niseko Cup Junior Ski Marathon
Mid Feb:	Snow Summit joint snowboard test ride event.

Early Mar:	Grand Hirafu Namarari Pipits Old Boys Ski Event – Grand Hirafu Ski Field
Mid Mar:	Ski and Snowboard Battle, Niseko Annupuri Festa – Niseko Annupuri International Ski Resort
Mid Mar:	Giant Slalom and Hokkaido Junior Ski Technique Championships – Grand Hirafu Ski Field
Late Mar:	Grand Hirafu Parents and Children Ski Competition – Grand Hirafu Ski Field
Late Mar:	Snowboard Technical Match Series – Grand Hirafu Ski Field
Late Mar:	All Hokkaido Old Boys Giant Slalom Competition.
Late Mar:	Hokkaido Junior Ski Technical Tournament.
Every weekend:	Grand Hirafu Weekend Firework Display – Grand Hirafu Ski Field
Early Apr:	Chuo Bus All Hokkaido GS competition – Niseko Annupuri International Ski Field
Early Apr:	Grand Hirafu – Super Bumps – Kutchan Town, Mayors Cup – Hirafu Classic – Grand Hirafu Ski Field
Early Apr:	Hanazono FIS Snow Board Cross Country Ski Event – Chisenuppuri Ski Field
Early Apr:	Niseko Potato Cup & Niseko Moiwa Cup – Niseko Moiwa Ski Field
Mid Apr:	Hi! Loaf – Hanazono

Please note event dates may change with out notice.



Niseko United

Mt. Niseko Annupuri (1,308m) is home to 4 of the Niseko districts ski fields, these ski fields have combined to form a cooperative which is referred to as 'Niseko United'. Through 'Niseko United' visitors have access to all mountain lift passes, which in turn give visitors access to the free buses which circumnavigate the base of the mountain.

From the varied terrain of the slopes on Mt. Niseko Annupuri you can enjoy skiing in world renowned Niseko powder snow, while enjoying the majestic scenery of the district of the Niseko district.

For further details check the Niseko United Website below:

• <http://niseko.ne.jp/en/index.html>

Ski Resorts | Niseko Annupuri International Ski Area



Niseko Annupuri International Ski Area

Niseko Annupuri offers long, gentle and wide open runs. Enjoy a relaxed run down, overlooking the beautiful silver birch forests. Also located on the southern side of Niseko Annupuri, the soft, warming afternoon light brings out amazing views of the Niseko Mountain Range. The Niseko Northern Resort Annupuri Hotel lays at the base of the ski area alongside the Niseko Hotel Iko no Mura. A bus stop, ski schools, ski rentals and a multitude of boutique accommodation providers and restaurants can be found within walking distance in the tranquil village atmosphere of Annupuri.

During the warmer months the area is becoming well known for its "mountain biking" and you can take your bike on the gondola up the mountain and enjoy the downhill decent. This is an increasingly more popular way to enjoy Niseko.

Course Information

Number	Course Name	Steepest Slope	Average Degree of Slope	Length
1	Championship	25°	21°	565m
2	Panorama	24°	19°	475m
3	Utopia	22°	15°	600m
4	Silver	22°	20°	150m
5	"S" Ji	20°	14°	700m
6	Shirakaba	20°	16°	800m
7	Paradise	12°	11°	560m
8	Family	11°	6°	580m
9	Merchen	28°	18°	277m
10	Junior	13°	9°	960m
12	Dynamic	33°	19°	390m
13	Fukayuki Rinkan	34°	24°	400m

Lift Information

Lift name	Length	Time	Points
Annupuri Gondola Lift	2,274m	8 mins	4 points
Jumbo Hooded Quad Lift	1,117m	5 mins	2 points
Family Pair Lift	517m	4 mins	1 point
Jumbo Pair Lift #2	764m	6 mins	1 point
Jumbo Pair Lift #3	569m	4 mins	1 point
Jumbo Pair Lift #4	605m	4 mins	1 point

Lift tickets:

- All Mountain Pass: Unlimited access to all ski fields that operate under the Niseko United scheme.
- 5 Hour, 8 Hour, 1 Day and 2 – 7 Day passes, night passes and season passes.
- Lift and gondola rides can also be paid for individually or by the hour. *Prices and availability vary according to season, so please check the website given below for further detailed information or contact Niseko Annupuri directly. Ski trail maps in Japanese and English are available on the Niseko United Site for download or at all accommodation and information providers in the district.
- Lifts operating: Late Nov – Early May (dependent on weather conditions, varies from year to year)
- Lift operating hours: 8:30 am – 21:00 pm
- Night skiing: 16:30 pm – 21:00 pm (Early Dec – Late Mar)

Snow conditions determine the opening times of the Ski feilds for the latest information please check the website below or call the skifeilds directly.

Website:

<http://annupuri.info> (Japanese)

http://annupuri.info/gelände_guide_english.html (English; winter information)

Contact:

Niseko Annupuri International Ski Area,
Hokkaido, Abuta gun, Niseko cho, Niseko 485
Tel. +81(0)136-58-2080

Ski Resorts | Niseko Village



Niseko Village

On the Southern side of Niseko Annupuri, Niseko Village utilizes the protruding area of the mountain to offer a huge variety of options for the most adventurous of skiers. The middle part of the resort especially has a wealth of terrain changes, whilst the top part of the resort opens up with wide open runs and a glimpse of the Pacific Ocean on a clear day. Enjoy elegant resort living with the Hilton and Green Leaf hotels connected directly at the base of the resort.

The resort offers ski rental and a good variety of fun outdoor activities in winter, like reindeer sledding, snowmobiling etc. In the warmer period of the year, golf and a very popular outdoor obstacle adventure course called "Pure Action" can be enjoyed alongside tree trekking, snag golf, golf cart trekking and a host of other options.

Course Information

Number	Course Name	Steepest Slope	Average Degree of Slope	Length
1	Wonderland	25°	14°	960m
2	Ukairo			
3	Snorkel			
4	Dabesa	26°	8°	1880m
5	Joppin	35°	13°	970m
6	Zangi	24°	20°	500m
7	Nekko no Kabe			
8	Junkyard	35°	13°	970m
9	Konbu			
10	Superstition	35°	13°	970m
11	Jagaimo	26°	17°	250m
12	Enchantment			
13	Namara	27°	18°	650m
14	Make sense			
15	Misoshiru	32°	25°	850m
16	Unforgettable			
17	Cruiser	17°	7°	900m
18	Pure Magic			
19	Koguma	27°	12°	350m
20	Banzai	15°	7°	950m
21	Don't Blink	24°	11°	260m
22	Next Stage			
23	Shakey Knees	9°	4°	650m
24	Yard Sale			
25	Final Fling	13°	5°	700m

Lift Information

Lift name	Length	Time	Points
Wonderland Chair A	839m	5 mins	1 point
Wonderland Chair B	802m	5 mins	1 point
Country Road Chair	1,016m	7 mins	1 point
Mori no chair	1,093m	8 mins	1 point
Gondola	2660m	9 mins	4 point
Banzai Chair	427m	4 mins	1 point
Community Chair	682m	5 mins	1 point

Lift Tickets

- All Mountain Pass: Unlimited access to all ski fields that operate under the Niseko United Scheme.
- Lift tickets can be purchased at the Niseko Village Ski Center and at the base of Niseko Gondola.
- Children below six years of age ski for free.
- Passes are available for up to 7 days or at an hourly or point basis.
- Gondola tickets can also be purchased individually.
- Off-season discounts are available and prices vary according to season and ticket type, so please use the contact information given below to receive further information.

Lifts open from: Early Dec – Early Apr

(Subject to weather conditions)

- Lift operating hours: 8:30 – 16:30
- Night skiing: 16:30 – 20:00 (Early Dec – Late Mar)

Website: <http://www.niseko-village.com> (available in English, Japanese, simplified and traditional Chinese)

Contact:

Hokkaido, Abuta-gun, Niseko-cho, Higashiyama-onsen, Japan
Tel: +81(0)136-44-2211
Fax: +81(0)136-44-3990



A vast ski area that offers amazing views of Mt Yotei. The very first ski lift was installed in 1961. The lower part of the resort offers varied terrain and dynamic courses. The middle part offers a gentle run through birch forest tracks. From 1,000 m and above, beyond the tree line, you can enjoy wide open runs free of obstacles. The Kogen and Alpen hotels offer ski-in ski-out facilities, Hirafu Village lies at the base. Ski schools, cafes and restaurants are within walking distance of the ski field. Hot springs are located at Hotel Niseko Alpen and in the lower Hirafu Village at Yokoro Onsen (Hot Spring).

Apart from skiing and snowboarding, there are several outdoor activities available, especially in winter (snow mobiling, snow rafting, tube riding, Hanazono Adventure Park, snow park are great fun for everyone).

During the warmer months, the Niseko Tokyu golf course offers fabulous Mt Yotei views and is a great way to reenergize.

Hotel Niseko Alpen also offers a wellness programme with massages, acupuncture and a hot stone sauna bath and has one of the area's only public swimming pools.

Course Information

Number	Course Name	Steepest Slope	Average Degree of Slope	Length
1	Large	32°	19°	650m
2	Dynamic	30°	18°	530m
3	Shirakaba	20°	13°	945m
4	Center	25°	12°	900m
5	Rinkan	17°	14°	780m
6	Jumbo	34°	17°	1,200m
7	Parallel	25°	14°	575m
8	Sennoki	30°	10°	1,080m
9	Family	17°	7°	750m
10	Beginners access	20°	14°	342m
11	Super	35°	18°	1,220m
12	Furiko	30°	20°	460m
13	Kokutai	34°	18°	1,100m
14	Green	25°	14°	840m
15	Konayuki	37°	21°	403m
16	Miharashi	32°	18°	880m
17	Holiday	19°	9°	2,883m
18	Boyo	20°	11°	700m
19	Kogen	16°	10°	595m
20	King Area Access Pass	10°	4°	300m
21	Onsenzawa	40°	16°	268m
22	Alpen	28°	15°	814m

Lift Information

Lift name	Length	Time	Points
King Lift # 4	526m	4 mins	1 point
King Hooded Triple Lift # 3	1,186m	5 mins	2 points
Ace Pair Lift # 3	881m	5 mins	1 point
Swinging Monkey	1,139m	5 mins	2 points
King Quad Lift # 2	1,719m	7 mins	2 points

Ace Quad Lift # 2 Center 4	427m	4 mins	1 point
Hirafu Gondola	1,878m	8 mins	4 points
Holiday Pair Lift # 1	669m	6 mins	1 point
King #1 Pair A	582m	4 mins	1 point
King #1 Pair BB	582m	4 mins	1 point
Ace Pair Lift # 1	626m	6 mins	1 point
Ace Family Pair Lift	598m	6 mins	1 point

Lift Tickets

- All Mountain Pass: Unlimited access to all ski fields that operate under the Niseko United scheme.
- Eleven lifts operating between Dec and Mar
- Courses for beginners, intermediate, as well as advanced skiers. Exact operating dates will be posted on the Grand Hirafu website in advance to the start of a new season.
- Tickets can be purchased on a point-, hourly, daily or seasonal basis; special night skiing tickets are available. Discounts are offered off-season and at shoulder periods.
- Lifts operating: Late Nov – Early May
- Lift opening hours: 8:30 am – 16:30 pm
- Night skiing: 16:30 pm – 21:00 pm (Mid Dec – Late Mar)

Snow conditions determine the opening times of the Ski feilds for the latest information please check the website below or call the skifeild directly.

Website: <http://www.grand-hirafu.jp> (Japanese and English)

Contact

Grand HIRAFU Tel: +81-136-22-0109

Hotel Niseko Alpen Tel: +81-136-22-1105

Niseko Kogen Hotel Tel: +81-136-22-0117

Niseko Tokyu Golf Course Tel: +81-136-23-0109

Address: Hokkaido, Abuta gun, Kutchan cho, Yamada 204

Note: Larger version of trail map can be downloaded here:

<http://www.grand-hirafu.jp/winter/en/mountain/map.html> (requires flash player)

Ski Resorts | Hanazono



Located on the East side of Niseko Annupuri surrounded by virgin forest, the Eastern location of the resort is renowned for its extra dry snow. Hanazono offers the best range of free ride ski and terrain parks in Niseko. From the top half of the resort Yoichi Dake, Mt Muine and Mt Yotei can be viewed as you ski/ride down one of the long runs, suitable to all levels of skiers/snowboarders. There is a large dining and recreational centre at the base of the ski field. A variety of different cafeteria style foods can be enjoyed here, whilst enjoying the scenery.

Course Information

Number	Course Name	Steepest Slope	Average Degree of Slope	Length
1	Yotei Sunset	20°	19°	1,238m
2	Renraku	10°	10°	281m
3	Crystal Garden	17°	7°	1,047m
4	Legend of Shinya	30°	14°	896m
5	Stairway to Heaven	26°	11°	1506m
6	Hanazono Park	22°	16°	624m
7	Silver Dream	20°	8°	3,300m
8	Setsuzoku	23°	16°	257m

Lift Information

Lift name	Length	Time	Points
Hanazono Hooded Quad Lift #1	1,627m	7 mins	2 points
Hanazono Quad Lift #2	743m	3 mins	2 points
Hanazono Hooded Quad Lift #3	1,102m	5 mins	2 points

Lift Tickets

- All Mountain Pass: Unlimited access to all ski fields that operate under the Niseko United scheme.
- 3 lifts; open from early Dec to early Apr.
- Night skiing is not available.
- Hanazono Park is open in winter and includes a terrain park and half pipe, the Nature Adventure Park offers outdoor activities such as snowmobiling, snow rafting and snow shoeing.
- NISS Ski School is located at the base of the resort.

The Tokyu golf course forms part of Hanazono and the area boasts a number of outdoor activities, such as various forms of rafting, mountain biking, canyoning in the warmer months of the year can be booked directly at the resort's main office. See contact details below. A list of accommodation providers is linked to the website. In winter, a shuttle bus service (free for holders of the Niseko All Mountain Pass) links the resort to the other Niseko United resorts. Lifts operating: Early Dec – Early Apr (dependent on weather conditions)
Lifts opening hours: 8:30 am – 16:00 pm (may vary by up to 30 minutes depending on the season)

Snow conditions determine the opening times of the Ski fields for the latest information please check the website below or call the skifeild directly.

Website:

<http://www.hanazononiseko.com> (in Japanese and English)

Contact:

Nihon Harmony Resorts KK

Address: Hokkaido, Abuta-Gun, Kutchan-Cho, Yamada, 3F 179-8 Japan

Tel: +81(0) 136-21-6655

Note:

Interactive eco-friendly flash and PDF map can be downloaded at the link below.

http://www.hanazononiseko.com/en/winter/trail-map/pdf/niseko_trail_map.pdf



Moiwa Ski Resort is not part of the Niseko United pass system. However, it is well known throughout Niseko as a ski resort with historical roots going back as far as 1919. There weren't any ski lifts at the time, and skiers would climb the mountain for many hours because of the exceptional snow quality, abundant snowfall, and small yet wide ranging course. Furthermore, Moiwa boasts a stunning view of its vast surroundings; Mt Yotei is particularly breathtaking on a clear day.

This exceptional location, abundant in nature, has charmed many visitors over the years, and it officially opened as Niseko Moiwa Ski Resort in 1966. Since then, Moiwa has been loved not only by the locals but also by fans all over Japan and the world as the ultimate powder snow resort. In recent years, many Australian and European skiers and snowboarders have come to adore this "ski slope with a feeling of privacy."

As well as lift ticket sales the Ski Resort offers other services like a rental reception desk, and there is an information area that outlines many of the different events that are staged. There is a coffee shop and a relaxing restaurant area. Changing rooms and toilet facilities are inside the main ski house.

Course Information

Number	Course Name	Steepest Slope	Average Degree of Slope	Length
1	Giant Run	30°		1,200m
2	Expert Run	30°		1,800m
3	Forest Run	33°		2,400m
4	Sky Slope	32°		2,800m
5	Shirakaba Slope	20°	Ungroomed	300m
6	Main Burn	17°		1,400m

Lift Information

Lift name	Length	Time	Points
A. 4 Person Quad Lift w/hood	1,574m	n/a	n/a
B. Pair Lift	919m	n/a	n/a
C. Pair Lift	392m	n/a	n/a

Ski Hire Equipment Available

Carving Skis, Fat Skis, customers can rent skis, boots, poles and skiwear separately if required.

Ski Hire open: 10:00 am – 15:00 pm

Contact:

Niseko Moiwa Ski Resort

Address: Hokkaido, Abuta-gun, Niseko-cho, Niseko 448 Japan

Business Hours: 8:30-16:00 Night Skiing until 21:00

Parking: 200 vehicles

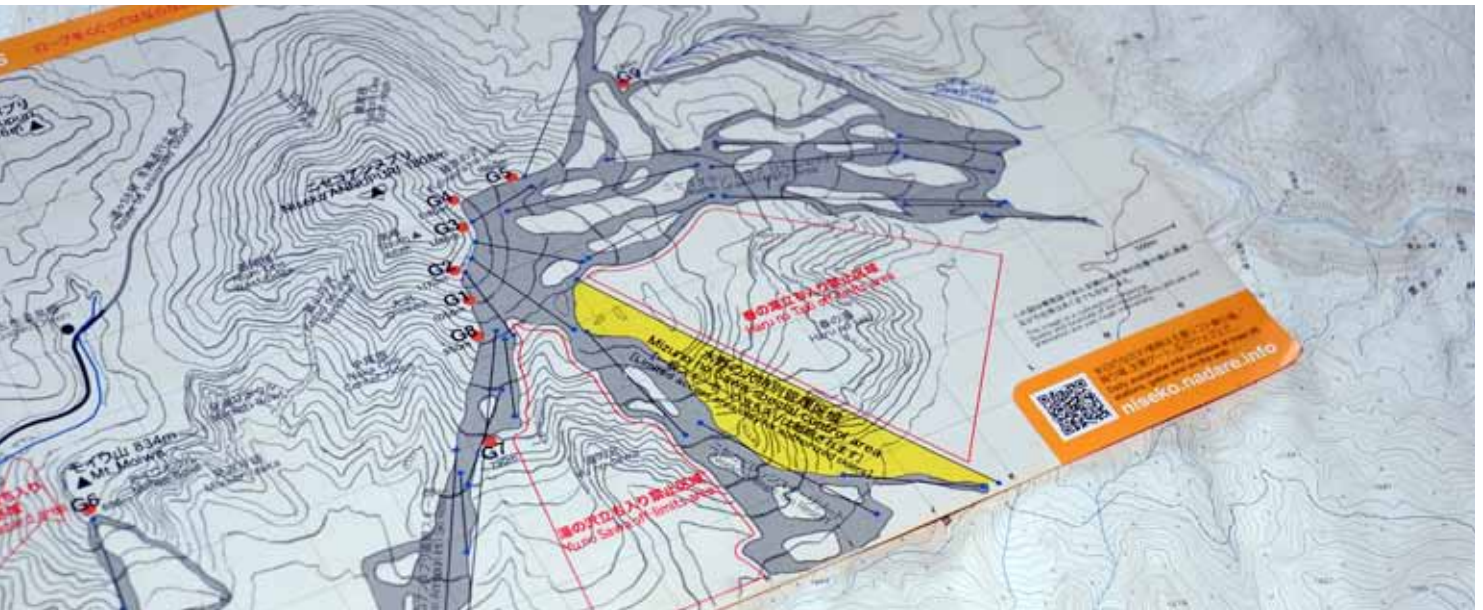
Tel: +81(0) 136-59-2511

Website:

<http://www.niseko-moiwa.jp/english/index.html>



Niseko Rules



CROSSING BOUNDARY ROPES IS PROHIBITED

The Niseko Rules are Niseko area's official regulations created for the safety and freedom of every skier and snowboarder riding inside and outside the ski resort boundaries.

The latest avalanche safety information updates, which are posted daily, can be found on the official Niseko Avalanche Safety Website.
<http://niseko.nadare.info/>

A copy of the Niseko Rules in English and Japanese can be downloaded at the links listed below.

- ❗ ① "Haru no taki" & "Yu no sawa" area is strictly off limits at all time.
- ❗ ② Crossing boundary ropes is prohibited. Those who violate the rules may be refused from using all resort facilities.
- ❗ ③ No safety control & no patrol beyond resort boundaries.
- ❗ ④ Do not step out of bounds when gates are closed.
- ❗ ⑤ The "Niseko Avalanche Information" is the official information source of Niseko rules.
- ❗ ⑥ Special charges will be applied for out of bounds search and rescue.
- ❗ ⑦ Ski patrol's instructions must be obeyed
- ❗ ⑧ Children under 12 must refrain from going out of bounds unless accompanied by a proficient adult leader.
- ❗ ⑨ The resorts and the local community respect the freedom of all resort users, but are deeply concerned about their safety.

Niseko Rules are official regulations, established by the Niseko Annupuri Avalanche Prevention Committee, the Niseko Mountain Resort Safety Committee, the Niseko Free Passport Committee and the Hokkaido Shiribeshi Alpine Accident Prevention Committee.

<http://niseko.nadare.info/>

http://www.niseko.ne.jp/rules/11-12Niseko_Rule_JPEN.pdf



Accommodation



Niseko has a wide variety of accommodation options; there is something to suit every budget and individual taste. Accommodation choices range from public camping grounds to multi amenity condominium style accommodation. There is a good choice of homely pensions (bed and breakfast style accommodation, that usually have dinner options as well), 'Bed and Breakfast' accommodation, 'Backpackers', hostels and 'International branded Hotel' accommodation to choose from. Many of the accommodation providers are located in picturesque and convenient locations and provide a pick-up and drop-off service from the Niseko JR railway station. (Confirm transfers at time of booking)

<http://www.niseko-ta.jp>

Check the rear of this guide for detailed information on accommodation .



Dining out in Niseko is a taste sensation. There are an immense choice of restaurants and cafes to choose from with menus to suit everyone's palate and budget. The farmers and local food producers are passionate about what they do. This becomes obvious when you start to eat; there is nothing like the flavors of local produce. Niseko for many visitors is as much about gourmet dining as it is about outdoor adventure.

Restaurants

Different nationalities and cultures have influenced the menus in the restaurants, Japanese-style renditions of many of your favorites can be found and while you are dining, you are certain to discover a few new favorites. Restaurants are scattered across Niseko. Some are in remote scenic locations and others have first class views of Mt Yotei or look out over the ski fields and others are quaint and cozy. Niseko dining is most certainly about exploring. To make this easier for you, many of the restaurants in Niseko Town boast multi-lingual menus, enabling everyone to enjoy the chefs' culinary expertise and have a great time.

Holidays are about great coffee!

If you like coffee then Niseko is the place to come. The tea and coffee culture that is spreading worldwide, has come to Niseko. There are several locations where you can get coffee that is

hand-roasted, milled and prepared with care and several new establishments that serve the very best espresso in the district. Please check the restaurant list for the nearest locations to you.

Niseko Farmers Market

The Niseko Michinoeki View Plaza is a very popular farmers market, where locals frequently shop,. You can buy the very freshest seasonal produce the district has to offer at extremely reasonable prices.

In spring, asparagus and Ainu garlic, in summer melon, corn and tomatoes, in the autumn potatoes and pumpkin.

Michinoeki View Plaza, Niseko Chokubaikai

Tel: +81(0)136-44-3433

Website: <http://vpla.snow.ne.jp/>

Restaurant Guide

Restaurant/ Facility Name Category	Business Type ● Espresso Coffee ● Hand Roasted Coffee ▲	Location	Opening Hours * L.O. is last order	Area code +81 (0) 136 (Include Domestic Area Code)	Closed
---------------------------------------	---	----------	---------------------------------------	---	--------

Soba Sushi Japanese Foods

Kuishinbo Fuku	Japanese restaurant	Downtown	11:00-14:00/17:00-20:00	44-2980	Wed. (or the following day if Wed. is a public holiday).
Hanayoshi	Sushi/Japanese Izakaya pub	Downtown	17:00-23:00 (L.O. 22:30)	44-3444	Mon.
Maguroya Juwari	Soba/Japanese restaurant	Downtown	11:30-14:00, 17:00-19:30	44-3561	Mon./2nd Sun of the month
Soba restaurant RAKUICHI	Soba	Annupuri	11:00-15:00 (closes when sold out.)	58-3170	Thu. Kaiseki Dinner from 17:00 Res. Only
Dining & Bar Plus 1	Japanese restaurant	Annupuri	11:30-14:00, 17:00-20:30	58-3568	Open 7 days a week.
Kaikatei	Japanese restaurant	Motomachi	11:30-20:00	44-1550	Closed on irregular days.
Gohan-ya Tohnotsuki	Japanese restaurant	Satomi	11:30-14:30	44-3565	Mon./Tue./Wed.
Sesame soba restaurant Gojin-ya	Soba/Japanese restaurant	Motomachi	11:00-15:00, 17:00-20:00	44-3504	Closed on irregular days.
Soba restaurant Ohashi	Soba	Motomachi	(Summer only) 11:00-15:00	44-1415	Open 7 days a week.
Handmade soba Yotei-an	Soba	Motomachi	10:55-16:05 (closes when sold out.)	44-1237	Tue. (Mon. /Tue. from Dec. to Mar).
Farmer's dining U-respa	Pork Cutlet Restaurant	Motomachi	11:00-15:00 (lunch); 15:00-17:00 (coffee); 17:00-20:00 (dinner)	44-3700	Tue.

Western style food and Restaurants

Café terrace Fu	Restaurant	Annupuri	(May-Oct.) 11:00-16:00; Closed on Mon. and Tue.	59-2600	Closed on irregular days.
Restaurant & Pension Vistare Kana	Nepalese curry	Annupuri	(Weekdays) 11:30-15:00 (Jul. 20-Sep. 23) 11:30-19:30	58-3330	Closed on irregular days
eff eff	Sausages/restaurant	Annupuri	(Restaurant) 11:00-15:00 (Shop) 9:00-18:00	58-3162	Tue. (Closed on irregular days in Apr. and Nov.)
M's Café (within Saison Club)	● Restaurant	Soga	11:00-14:00 lunch; closed on Thu.	44-3380	irregular days from Jul. 28 to end of Aug.
Milk Kobo restaurant PRATIVO	● Restaurant	Soga	11:00-16:00 (L.O. 15:00)	55-8852	Thu.
Pension & restaurant You You	Restaurant	Soga	11:00-21:00	44-3302	Tue. (Open 7 days from Jul. to Oct.)
Restaurant SCHÖNBERG	Restaurant	Kondo	(Summer) 9:00-16:00;	44-3756	(Winter) 11:00-15:00 closed on Thu. (* closes when sold out)
Black Diamond Bar and Grill	Restaurant	Soga	(Lunch) 11:30 - 14:00 (Dinner) 17:00 - 22:00 Last Order 21:30	44-1144	Closed on irregular days

Yakiniku, Okonomiyaki and Ramen

Yakiniku Restaurant Shun koen	Broiled meat	Downtown	17:00-24:00	44-2089	Mondays.
BBQ house Mokumoku-tei	Broiled meat	Annupuri	12:00-14:30 (L.O. 14:00); 17:00-21:30 (L.O. 20:30)	58-3111	Open 7 days a week. * Opening hours vary according to the season.
Okonomiyaki Jyu	Okonomiyaki	Soga	(Summer) 12:00-22:00	44-2336	Wed. /3rd Tue. of the month. (Winter) 16:30-22:00 on weekdays/12:00-22:00 on Sat./Sun. and public holidays.
Chinese restaurant Saibai-ken	Chinese food	Soga	11:00-14:30, 17:00-20:00	43-2345	Thu.
Niseko Loft Club	Jingisukan (barbecued lamb dish)	Soga	(Summer) 11:30-14:30, 17:30-21:30 (L.O. 20:30)	44-2883	(Winter) 17:30-21:30 (L.O. 20:30) Open 7 days a week.
Noodle dining house SOGA	Ramen/Japanese restaurant	Soga	11:30-21:00	43-2205	New Year period
Lodge 10 [TEN]	Ramen	Soga	11:50-15:00	44-2910	Mon./Tue./Wed.
Chinese restaurant Koshu Yatai	Chinese food	Motomachi	Weekdays 11:30-14:00, 17:30-20:00	43-2756	Sat./Sun./public holidays 11:00-14:00, 17:00-20:00 closed on Wed. and sometimes on other days.
Kushiya	Yakitori	Downtown	18:00-24:00	55-8863	Thu
Niseko Ghengis Khan	Genghis Khan	Soga	(Lunch) 11:00- 15:00 (Dinner) 17:30 - 21:30 Last Order 21:00	55-5621	Tue

Coffee Shops and Light Meals

Café restaurant Apricot	Coffee shop	Downtown	11:30-18:00	44-3426	Mon.
Café Nuppuri (located in JR Niseko Station)	▲ Curry/coffee shop	Downtown	11:00-19:00 (L.O. 18:45)	44-2619	Wed.
Jyurakuan (within KIRANOYU)	Coffee shop & Japanese restaurant	Downtown	11:00-15:00, 16:30-22:00 (L.O. 21:30)	44-1100	Wed. (or the following day if Wed. is a public holiday).

Restaurant Guide

Restaurant/ Facility Name Category	Business Type ● Espresso Coffee ● Hand Roasted Coffee ▲	Location	Opening Hours * L.O. is last order	Area code +81 (0) 136 (Include Domestic Area Code)	Closed
Takano Coffee	▲ Coffee shop	Downtown	10:00–18:00 (L.O. 17:30) (Beans are sold until 19:00)	44-1620	Tue./Wed.
Niseko Tea Room	● Coffee Shop	Downtown	Summer 9:00 - 17:00 Winter 10:00 - 16:00	090-1491-3263	Thu
Gohanya Pension FumiFumi	Cafe	Soga	11:30-15:00	44-3625	Closed on irregular days
Café pizzeria DEL SOLE	● Pizza	Annupuri	12:00–15:00, 18:00–22:00	58-3535	Wed. and the 2nd & 4th Thu. in the month (Summer)/Wed. only (Winter)
Café grove	● Coffee shop & Japanese restaurant	Soga	(Summer) 11:30–15:00, 18:00–21:00 Closed on Wed.	54-2525	(Winter) 16:00–23:00 (Sat./Sun. 11:30–23:00); Closed on Wed. (Winter/Summer).
Café & tole-painting Kobo Maple	Light meals/coffee shop	Soga	(May–Oct.) 10:00–19:00, (Nov.–Apr.) 11:30–17:00	44-3820	Thu.
Leather crafts & coffee fan fun	Coffee shop	Soga	10:00–17:00	*050-7551-2688	Tue.
Komugiya	Light meals/coffee shop	Soga	Apr.–Oct. 11:00–16:00	44-1335	Sat./Sun./Mon./Tue. (Open every Wed. /Thu. / Fri. only).
Hanakyabetsu Café	Coffee shop	Soga	11:00–15:00	*080-6087-0292	Winter season (late Sep.–early Jun.).
Hourglass	Curry & pizza	Soga	(Late Apr.–early Nov.) 12:00–14:30	43-2180	Mon. (or the following day if Mon. is a public holiday).
Dog Café Dining GOO	Light meals/coffee shop	Soga	(Mid May–mid Oct.) 11:00– 15:00	44-3618	Tue. / Wed. and year-end/New Year period.
River Forest	Coffee shop	Soga	(Drinks only) 11:00–17:00	43-2500	Irregular days.
Shirokuma Café	Lunch menu and more	Satomi	11:00–14:00 (18:00–22:00 upon res.)	44-3368	Wed. /Thu.
Muroran Yakitori	Char-broiled chicken/pork	Motomachi	(Summer only) 10:00–16:00	*080-5590-9925	Irregular days
Picnic	Light meals/coffee shop	Kondo	11:30–14:00 (closes when sold out.)	*090-8814-6335	Mon./Tue./Wed.

Cheese Breads and Patisseries

SEED BAGEL & COFFEE	● Bagels/coffee shop	Downtown	8:00–18:00	55-5331	Sun./Mon.
Niseko Cheese Kobo	Cheese/coffee shop	Soga	10:00–17:00 (16:00 winter)	44-2188	Tue./Wed., open every day during Aug.
Niseko Milk Kobo	● Ice-cream & sweets	Soga	9:30–18:00 (18:30 summer)	44-3734	
Niseko Fromage	Cheese	Higashiyama	(Summer) 10:00–18:00, open 7 days a week.	44-3471	(Winter) 10:00–17:00, closed on Wed.
Okutsuchi Farm Bakery	Bread/coffee shop	Kondo	10:00–18:00	44-1095	Irregular days.

Izakaya, Bars, Karaoke

Izakaya Jirocho	Izakaya	Downtown	18:00–24:00	44-2521	Sun.
Izakaya Matsu	Izakaya	Downtown	18:00–24:00	44-3656	Sun. /public holidays.
Izakaya Rakuda	Izakaya	Downtown	18:00–24:00	55-5817	Sun.
Niseko Club	Izakaya	Downtown	10:00–24:00 (L.O. 23:30)	55-5245	Wed. Restaurant opens until 17:00.
Snack ai	Karaoke bar	Downtown	19:00–2:00	44-3393	Irregular days.
Snack Aoi Tori	Karaoke bar	Downtown	19:00–1:00	44-2811	Sun.
Snack Iitomo	Karaoke bar	Downtown	19:00–24:00	44-1560	Sun.
Snack Lupinas	Karaoke bar	Downtown	19:00–24:00	44-3569	Sun.
Karabina	Izakaya	Annupuri	18:00–24:00	50-2850	Tue. (Open every day during the winter season).
Black Diamond Lodge	Bar	Higashiyama	(Winter) 16:00–24:00	44-1144	Irregular days.

Sake/Wine/Mineral Water

Wines and Sakes and Locally Brewed Beer

When planning a visit to Niseko, whether for business or for pleasure, do not overlook locally produced Japanese sake (rice wine) and the delicious wines of Hokkaido or a pint of locally brewed Niseko Beer. Terroir is an important element in truly enjoying a region and through the enjoyment of locally produced sake and wine or beer together with local cuisine, you will be supporting the locals, keeping traditions alive and as a bonus you will have a richer Niseko experience.

Sake

Niseko was never known for its rice production. In 1997 a cooperative of 8 local farmers joined forces to produce high quality sake, which they named Kurabitoshu. The quality of the rice grown in the area is extremely high, resulting in a superior sake. Another little known fact about Kurabitoshu is that the rice is grown organically employing the assistance of ducklings which are raised alongside the rice and control pests in the rice paddies. These ducks become a byproduct of the Sake production in late Autumn when they make their ways on to menu at some of the region's best restaurants and hotels.

When sake is made, the outer shell of the rice grain is ground away leaving only the heart of the rice, which is fermented to produce the sake. The grinds from this process are further processed into a rice flour, which is widely used by local bakers, who produce deliciously moist breads and cakes. Kurabitoshu is needless to say, best enjoyed with local produce and is a great gift to take home to friends and family and colleagues

Maeda Shouten – Niseko Kurabitoshu retailer

Tel: +81(0)136-44-2433

Michi no Eki Niseko View Plaza

Tel: +81(0)136-44-3433

Hanajizoh bakery - breads made from rice flour

Tel: +81(0) 136-23-0331

<http://hanajizoh.net/>

*see separate chambers or commerce list for other retailers!

Niseko original Japanese Sake - Kurabitoshu branded products

Kurabito shu is a sake which is produced using suisei rice which has been grown in Niseko. This sake has been used in the production of a wide variety of different products which can be given as souvenirs or enjoyed as a reminder of your trip to Niseko.



Wine

In Hokkaido there are 14 different wineries each with their own characteristics. Touring the wineries during the warmer months is highly recommended. Wine appreciation information can be found online. Currently Hokkaido boasts the highest grape yield levels in Japan and produces a wide range of wines from different grape varieties. The quality of wines being produced by the wine makers is of a high quality. Hokkaido has its sights set on becoming a world standard wine producing region in the near future and the results that are currently being seen are sure to surprise even the most seasoned of connoisseur.

Extensive Hokkaido wine information can be downloaded in an Eco friendly PDF format in Chinese and English

- <http://dosanwine.jp/> (日本語のみ)
- http://www.ec-pro.co.jp/hokkaido-pedia/pdf/201109/september_0809.pdf

Matsubara Wine

Tel: +81(0)136-57-5758

An easy to drink wine of a very high quality grown in the Niseko region. Great when matched with Niseko produce and local foods.

Tsukiura Wine

Tel: +81(0)142-73-2988

Produced in the neighboring town of Lake Toya, this was the chosen wine for the 2008 G8 Summit. Grapes grown in the winemakers own vineyard is used in the wine production. The proximity of the vineyard to Niseko makes Tsukiura wines also a very good match to your Niseko meals.



Delicious 100% Pure Niseko Mineral Water

The water flowing from taps in Niseko is among the purest in Japan. Niseko Towns water is sourced from the base of Mt Yotei, which acts like a giant water filter, melted snow and rain are filtered through underground layers. An astonishing 530,000 tonnes of water gush out of springs surrounding the mountain's base every day. You can collect your own fresh spring water at several locations in the district. One of the more famous springs is the





Shopping | Recreational, Essential



A favorite pastime for many people on holiday or visiting an area for the first time is shopping. Niseko provides shopping opportunities for essentials and arts & crafts, sports equipment, not to mention a variety of special holiday delicacies.

Niseko Town

Niseko Town is has a quaint shopping area that provides locals and visitors with the basic essentials. The main street is called Kirakaido. This is where you will find several specialist stores. If you are Looking for specialist sporting equipment, then this can be found at the sports stores located in the different resort areas. Everything from golfing accessories to ski and snowboarding equipment is available. When you shop in Niseko town you can get a point card (Kira Card), which can be used at stores around the town. When the card is full it has a 500 yen value, which can be used at retailers and the popular Kiranoyu onsen (hot spring) towards the purchase of goods and services.

Essentials

Maeda Shouten (superette) - A handy superette in the centre of Niseko Town, freshly baked bread from renowned local bakery every Tuesday. Maeda Shouten is also an agent for Kurabitoshu, local sake which is the pride of the district. Tel: +81(0)136-44-2433

Co-op Yotei - Niseko - Small supermarket that has all of the essentials, very handy for visitors to Higashiyama and Annupuri, who are looking to stock up on supplies. All major items can be found here. Tel: +81(0)136-44-3010

Pharmacy Watanabe - A well-stocked pharmacy located near the supermarket in the main street. Tel: +81(0)136-44-1301

Yahashi Shoten - A traditional stationary store also doubles as a dry cleaning agent. Located opposite the Council Chambers. Tel: +81(0)136-44-2555

There are 2 convenience stores located in Niseko Town.

Seicomart Niseko Store Tel: +81(0)136-43-2074

7 Eleven Niseko Store Tel: +81(0)136-44-2451

Souvenirs

Souvenirs can be purchased at the following retailers.

Glass Bead Studio Tonbodama Kobo Niseko no Kaze (Milk Kobo)
Tel: +81(0)136-44-1766

Shizen Kobo Niseko no Mori (Milk Kobo)

Tel: +81(0)136-44-1766

Michinoeki Niseko View Plaza (Michinoeki, Centre Building)
Tel: +81(0)136-43-2051

You You Park (Opposite Milk Kobo)
Tel: 0136-44-1888

Kutchan Shopping

In Kutchan, the neighboring town, there are novelty stores, cafes, sports and outdoor stores, home and garden centres and electronic stores, not to mention 3 large scale supermarkets which are well stocked with daily requirements.

Sapporo City Shopping

Sapporo city and a vast array of shopping opportunities are located 60 kilometres from Niseko and accessible by train, bus and car. If you want to go shopping in style, you can charter a minivan or one of the luxury limousine vehicles that are available in Niseko Town. (<http://www.niseko-ta.jp>) In Kitahiroshima, and area located mid-way between Sapporo and Chitose, there is a large Mitsui Outlet Shopping Mall for the seasoned shopper, with everything from gourmet to fashion items on offer and nearby there is a large Costco Superstore for everyday supplies and a Joyful AK Home center, so you can make a day of shopping and be back in Niseko in time for a relaxing wine or local sake in front of the fireplace at your accommodation.

Eco-friendly English shopping map for Sapporo City.

http://www.infomapjapan.com/images/map/Sapporo_map_web.pdf

Otaru Sightseeing and Shopping

Otaru City is located approximately 1 hour 30 minutes away from Niseko and is easily accessible by train, bus and car and is home to a vast variety of sightseeing and shopping options. Otaru has a very nostalgic feel to it, with streets full of stone storehouses, which are now home to restaurants, cafes and gift shops. In winter the candle displays in the canal area are a not to be missed romantic winter experience no matter what your age.

Eco-friendly downloadable english shopping map for Otaru City.

Shopping | Art, Boutique Factories, Museums



Art/ Boutique Factories

Niseko has a wide variety of boutique factories producing a wide variety of cheese products, ice creams, pastries, breads, sweets and small goods as well as furniture and a good selection of different arts. Everything is within either a short walk or a short taxi ride from most Niseko accommodation. There are chartered taxi options available to ensure you are able to enjoy everything that is on offer..

The RAM gallery in Niseko Town is one location that you should consider putting in your itinerary. The owner/artist Mr. Sawada works with iron and wood, creating unique furniture and sculptures. During your stay in Niseko you may notice all of the signage in the main street are, actually sculptures that have been handcrafted by Mr. Sawada.

Other craft producers and galleries in Niseko include;

- Sandblasted Glass
- Variety of painters
- Earthenware and pottery producers

A pamphlet that highlights the creative people of Niseko town has been produced by the town (Niseko Monozukuribito). This is available from information centres in Niseko and also at the Town Council Chambers.

There is also a full English translation of this booklet available on request.

Tel: 0136-44-2121

email: kankou@town.niseko.lg.jp

Arishima Kinenkan (Arishima Memorial Museum)

Takeo Arishima is a famous Japanese author, but is also well known for gifting his farmland to the people of Niseko, so that the people had an opportunity to earn a living from the land. In 1922, a memorial museum was set up to honor Arishima. Today the museum still exists and is home to many of this great author's works as well as acting as a cultural stage for the people of Niseko.

Arishima Kinenkan (Memorial Museum)

Tel: +81(0)136-44-3245

Useful Guide to Craft and Souvenir Shops

Name of Shop	Type of Craft	Location	Hours	Telephone	Opening Hours
Shizen Kobo Niseko no Mori	Souvenirs	Soga	9:30-18:00	44-1766	Open 7 days a week. Closed on irregular days (winter).
Glass Bead Studio Tombodama Kobo Niseko no Kaze	Glass crafts	Soga	9:30-18:00	44-1776	Open 7 days a week. Closed on irregular days (winter).
Glass Gallery Doumu	Glass crafts	Soga	9:00-17:00	43-2552	Irregular days.
RAM Kobo Gallery Tetsu	Crafts	Soga	(Late Apr.-Oct.) 10:00-17:00	44-1331	Days off are Tue/ Wed and they open on a Tue/Wed if it is a public holiday
Michinoeki, Niseko View Plaza	Souvenirs	Motomachi	9:30-18:00 (19:00 in Jul. And Aug.)	43-2051	Open 7 days a week.
Niseko Pottery – Warabe	Pottery	Annupuri	10:00-17:00	55-2863	Irregular days.
You You Park	Souvenirs	Higashiyama	9:30 - 18:30 (Jul - Oct)	44-1888	Irregular days

Relaxation

Onsen (Hot Springs)/ Massage/ Spa

Niseko is well known for its outdoor pursuits, both in summer and winter. After a great day hiking or canoeing, water rafting, skiing or snowboarding, there is nothing quite like pampering yourself in the tranquil surroundings and warm geothermal water of a local onsen (hotspring). Japanese people work hard and it is this quality that has taught them how to relax and unwind as well. There are 15 different onsen facilities in the wider Niseko region, each one has its own distinct mineral content and healing qualities. The waters of the hot springs range from milky white to a brownish red, adding to the charm of a bathing experience.

Revive

Relax, recharge, revive and take time out to boost your well-being and bodies balance. There are a good variety of day and resort style spas on offer. There are a comprehensive range of therapies available and you can be assured that even the most discerning of traveler will find something here in Niseko to suit. Enjoy Hokkaido-style spa treatment sessions in an international hotel or a Chinese stress relieve massage in a local designer hotel (award-winning), or if you do not feel like going out, get concierge to arrange an in-house massage.

Zen

There's something spiritual about soaking in an outdoor geothermal onsen (hot spring), with snow falling around you. There are not many places in the world that boast the variety of facilities that are available in Niseko.

If you are not a winter person then visit Niseko in summer. The waters of the onsen are just as magical, while you look out over a forested national park soothing away the aches of the day.



Relaxation List				Area Code 0136	Reservations Essential
Wakka Spa	Spa Treatment	Niseko Village	<ul style="list-style-type: none"> Various massages available Hot stone therapy Facials available 	44-1111	http://niseko.hilton.com
LomiLomi Massage – Hotel Kanronomori	Hawaiian Massage	Konbu Onsen	<ul style="list-style-type: none"> Various massages available Foot Massage Face and Head Massage 	58-3800	http://www.kanronomori.com/en/relaxation/lomi_lomi_massage.html
Inca Rebassa Hermosa Angel	Massage	Niseko Town/ Hirafu	<ul style="list-style-type: none"> Facials Massages In room service available 	23-2004	http://www.j-sekka.com/
Haru Haru	Massage/ Aromatherapy	Niseko Town/ Rankoshi	<ul style="list-style-type: none"> Aromatherapy Massage Reflexology In Room Service only 	57-5221	Mobile telephone: 090-8042-9552
Green Leaf Spa	Massage/Spa	Niseko Town	<ul style="list-style-type: none"> Bamboo Tapping Facial Massage 	44-3311	http://www.thegreenleafhotel.com/content/spa-onsen#neck
Niseko Physio	Physiotherapist	Downtown	<ul style="list-style-type: none"> Sports injury treatments Massage 	22-0399	http://www.nisekophysio.com/
Karada Kizuki	Yoga	Niseko Town/ Hirafu/ Kutchan	<ul style="list-style-type: none"> Personalized Yoga lessons at your place 	090-1859-5311	http://www.nisekoyoga.com
Hotel Kanronomori Fitness Club	Fitness	Niseko Town	<ul style="list-style-type: none"> Full Gymnasium 	58-3800	http://www.kanronomori.com
Niseko Foot Massage	Massage	Niseko Town	<ul style="list-style-type: none"> Various massages available Bed Rock Sauna Facials/ Manicures 	44-1676	http://www.grand-hirafu.jp/nisekofoot/index_j.html
Treatment Yukiko	Massage/Spa	Konbu Onsen	<ul style="list-style-type: none"> Body/ Facial/ Feet 	59-2323	Tsuruga Bessou Moku no Sho http://www.mokunosho.com/

Onsen (Hot Spring) Facilities



Eco friendly Niseko Hot Spring map can be down loaded here: <http://www.niseko-ta.jp/blog/images/onsen-map-data2012.pdf>

Niseko Yumeguri Passes can be purchased at any of the participating facilities or at the Niseko Resort Tourist Association.

Save with the Yumeguri Hot Spring Pass

When you visit Niseko be sure to look for a Yumeguri pass. This saves you money and one pass allows you to enjoy a soak after an action filled day at 3 of the 15 registered hot spring facilities. (Bathers can try 3 different facilities or they can return 3 times to their favorite hot spring facility.) The Yumeguri pass is valid 180 days from time of purchase and is great value at 1400 yen including tax. Look for the Yumeguri pass sign for Hot Spring facilities participating in the Yumeguri Pass Scheme. Or check the following web pages for comprehensive information

Niseko Resort Tourist Association:

<http://www.niseko-ta.jp/index.php?id=60>

Niseko Promotion Board:

<http://www.nisekotourism.com/en/about-niseko/onsen-relax/>

Kiranoyu (Yumeguri Pass)

Fee: Adult 500 yen / Child 250 yen Lockers: Free
Address: Hokkaido, Abuta gun, Niseko cho, Chuo doori 33
Business hours: 10:00 am - 21:30 pm
Closed: Wednesday
Tel: +81(0)136-44-1100
• (Rental) Bath towel & face towel set 300 yen
• (For purchase) Bath towel 850yen, face towel 150 yen

Hilton Niseko Village (Yumeguri Pass)

Fee: Adult 1,000 yen / Child 500 yen Lockers: Free
Address: Hokkaido, Abuta gun, Niseko cho Higashiyama Onsen
Business hours: 13:00 pm ~21:00 pm
Closed: Year-end and New Year
Tel: +81(0)136-44-1111
• Towel rental included in the fee

Hotel Niseko Ikoi-no-mura (Yumeguri Pass)

Fee: Adult 700 yen / Child 350 yen
Address: Hokkaido, Abuta gun, Niseko cho, Niseko 473
Business hours: 12:00 am ~ 22:00 pm (last entry by 21:00 pm)
Closed: Year-round operation
Tel: +81(0)136-58-3111
• (Rental) Face towel 100 yen, towel set 300 yen

Hotel Kanro-no-mori (Yumeguri Pass)

Fee: Adult 700 yen / Child 300 yen Lockers: Free
Address: Hokkaido, Abuta gun, Niseko cho, Niseko 415
Business hours: 11:00 am - 22:00 pm (last entry by 21:00 pm)
Closed: Year-round operation
Tel: +81(0)136-58-3800
• (Rental) Bath towel & face towel set 200 yen

Green Leaf Hotel *Closed during summer

Fee: Adult 700 yen / Child 300 yen Lockers: Free
Address: Hokkaido, Abuta gun, Niseko cho, Higashiyama Onsen
Business hours: 13:00 pm ~ 21:00 pm
Closed: Year-round operation (occasionally closed in Apr and Nov)
Tel: +81(0)136-44-3311
• Towel rental 200 yen

Niseko Annupuri Onsen Yugokorotei (Yumeguri Pass)

Fee: Adult 700 yen / Jr. high school student 600 yen / Child 500 yen Lockers: Free
Address: Hokkaido, Abuta gun, Niseko cho, Niseko 438
Business hours: 6:00 am ~24:00 pm (last entry by 23:00)
(hours occasionally changed on cleaning day)
Closed: Year-round operation
Tel: +81(0)136-58-2500
• (Rental) Bath towel & face towel set 250 yen
• (For purchase) Bath towel 600 yen, face towel 200 yen

Niseko Konbu Onsen Tsuruga Bessou Mokunoshō

Fee: Entry to the Hotspring only with the purchase of a pre booked lunch.
Lunch: Between 2730 yen and 3990 yen.
Childrens Lunch available for 1995 yen.
Address: Hokkaido, Abuta gun, Niseko cho, Niseko 393
Business hours: 11:30 am - 14:30 pm
Tel: +81(0)136-59-2323
• (Rental) Bath towel & face towel included in cost.

Niseko Grand Hotel

Fee: Adult 700 yen / Child 350 yen Lockers: Free
Address: Hokkaido, Abuta gun, Niseko cho, Niseko 412
Business hours: 11:30 am - 21:00 pm
Regular holiday: Year-round operation
(occasionally reserved for exclusive use by in-house guests)
Tel: +81(0)136-58-2121

Onsen (Hot Spring) Facilities

- (Rental) Bath towel 150 yen, face towel 100 yen, ladies bathing wear (smock) 100 yen

One Niseko Resort Towers (Yumeguri Pass)

Fee: Adult 900 yen / Children from 3 years to Elementary school age 500 yen

Address: Hokkaido, Abuta gun, Niseko cho, Niseko 455-3

Business hours: 13:00 am - 21:00 pm (last entry by 20:00 pm)

Closed: Year round operation

Tel: +81(0)136-50-2111

(Rental) Towels are included in bathing cost.

Koikawa Onsen Ryokan (Yumeguri Pass)

Fee: Adult 500 yen / Child 300 yen Lockers: Free

Address: Hokkaido, Isoya gun, Rankoshi cho, Yunosato 592

Business hours: 10:00 am - 21:00 pm (last entry by 20:00 pm)

Closed: Irregular

Tel: +81(0)136-58-2111

- (Rental) Bath towel 300 yen, face towel 200 yen
- (For purchase) Face towel 200 yen

Kokumin-Shukusha Yukichichibu (Yumeguri Pass)

Fee: Adult 500 yen / Child 300 yen Lockers: Free

Address: Hokkaido, Isoya gun, Rankoshi cho, Yunosato

Business hours: 9:30 am - 21:00 pm

Closed: Year-round operation

Tel: +81(0)136-58-2328

- (Rental) Bath towel 300 yen
- (For purchase) Face towel 200 yen

Niseko Goshiki Onsen Ryokan (Yumeguri Pass)

Fee: Adult 600 yen / Child 400 yen Lockers: Free

Address: Hokkaido, Abuta gun, Niseko cho, Niseko 510

Business hours: 8:00 am - 21:00 pm

Closed: Year-round operation

Tel: +81(0)136-58-2707

- (For purchase) Bath towel 500 yen, Face towel 200 yen

Hotel Niseko Alpen (Yumeguri Pass)

Fee: Adult 700 yen / Child 400 yen Lockers: Free

Address: Hokkaido, Abuta gun, Kutchan cho, Yamada 204

Business hours: 14:00 pm ~ 22:00 pm (last entry by 21:00 pm)

Closed: Year-round operation Swimming Pool (Extra Cost)

Tel: +81(0)136-22-1105

- (Rental) Bath towel 200 yen, face towel 100 yen

Niimi Honkan (Yumeguri Pass)

Fee: Adult 500 yen / Jr. High school student 300 yen / Child 200 yen Lockers: 100 yen

Address: Hokkaido, Isoya gun, Rankoshi cho, Niimi 1

Business hours: 8:00 am - 21:00 pm

Regular holiday: Year-round operation

Tel: +81(0)136-57-5231

- (For purchase) Bath towel 400 yen, face towel 100 yen

Niimi Onsen Hotel (Yumeguri Pass)

Fee: Adult 500 yen / Child 300 yen Lockers: Free

Address: Hokkaido, Isoya gun, Rankoshi cho, Niimi 5

Business hours: 10:00 am - 19:30 pm

Closed: Irregular

Tel: 0136-57-5224

- (Rental) Bath towel & face towel set 500 yen

Yusenkaku (Yumeguri Pass)

Fee: Adult 500 yen / Child 300 yen Lockers: Free

Address: Hokkaido, Isoya gun, Rankoshi cho, Konbu-machi 114

Business hours: 10:00 am - 21:30 pm, Monday 12:00 pm - 21:30 pm

Regular holiday: Year-round operation

Tel: +81(0)136-58-2131

- (Rental) Bath towel 300 yen
- (For purchase) Face towel 180 yen

Makkari Onsen (Yumeguri Pass)

Fee: Adult 500 yen / Child 200 yen Lockers: Free

Address: Hokkaido, Abuta gun, Makkari mura, Midorigaoka 174

Business hours: 10:30 am - 21:00 pm

Closed: Monday

Tel: +81(0)136-45-2717

- (For purchase) Bath towel 500 yen, face towel 180 yen

Yumoto Niseko Prince Hotel Hirafutei

Fee: Adult 800 yen / Child 400 yen Lockers: Free

Address: Hokkaido, Abuta gun, Kutchan cho, Yamada 204

Business hours: 7:00 am ~ 10:30 am, 13:00 pm ~ 23:00 pm

Closed: Year-round operation (occasionally closed in Apr and Nov)

Tel: +81(0)136-23-2239

- (Rental) Bath towel 200 yen
- (For purchase) Face towel 200 yen

Onsen Yukoro

Fee: Adult 600 yen / Child 300 yen Lockers: Free

Address: Hokkaido, Abuta gun, Kutchan cho, Yamada 163

Business hours: Weekdays 17:00pm - 21:30 pm, weekends and

national holidays 14:00 pm -21:30 pm, Dec-Mar 14:00 pm - 22:30 pm

Closed: Tuesday

Tel: +81(0)136-23-3434

- (Rental) Bath towel 200 yen, face towel 100 yen
- (For purchase) Bath towel 500 yen, face towel 200 yen

Tsukimi-no-Yado Akahane

Fee: Adult 800 yen / Child 300 yen Lockers: Free

Address: Hokkaido, Isoya gun, Rankoshi cho, Yunosato 680

Business hours: 10:00am - 17:00 pm

Closed: Year-round operation

Tel: +81(0)136-59-2881

- (Rental) Bath towel & face towel set 300 yen

Goshiki-no-Sato Niseko Yamanoie

Fee: Adult 500 yen / Child 300 yen Lockers: Free

Address: Hokkaido, Abuta gun, Niseko cho, Niseko 510

Business hours: 10:00 am - 20:00 pm

Regular holiday: Open every day from GW to Oct

Tel: +81(0)136-58-2611

- (Rental) Bath towel & face towel set 300 yen, bath towel 200 yen, face towel 100 yen
- (For purchase) Face towel 250 yen

Natural Resort Niseko Weiss Hotel

Fee: Adult 700 yen / Child 400 yen Lockers: 100 yen

Address: Hokkaido, Abuta gun, Kutchan cho, Hanazono 79

Business hours: Weekdays 13:00 pm - 18:00 pm, weekends &

national holidays 13:00 pm - 16:00 pm

Closed: 30 Dec - 2 Jan

Tel: +81(0)136-23-3311

- (Rental) Bath towel & face towel set including onsen fee 1,200 yen

Kutchan Onsen Hotel Yotei

Fee: Adult 700 yen / Child 400 yen Lockers: Free

Address: Hokkaido, Abuta gun, Kutchan cho, Asahi 69

Business hours: 10:00 am - 22:00 pm

Closed: Year-round operation

Tel: +81(0)136-22-1164

- (Rental) Bath towel & face towel set 300 yen
- (For purchase) Towel 250 yen, hotel original towel 262 yen

Kyogoku Onsen

Fee: Adult 600 yen / Child 300 yen Lockers: Free

Address: Hokkaido, Abuta gun, Kyogoku cho, Kawanishi 68

Business hours: 10:30 am - 21:00 pm

Closed: The second Monday of each month (or the next day if the second Monday falls on a National holiday)

Tel: +81(0)136-42-2120

- (For purchase) Face towel 100 yen - towel set 500 yen



Niseko is the perfect location to enjoy a round or two of golf. There are 2 courses in Niseko and several courses in the surrounding areas, all with attributes to suit everyone's skill level. Whether you would like to play a game on the immaculately groomed grounds of a resort course with uninterrupted views of Mt Yotei, or whether you would like to play a game on a world standard Arnold Palmer designed course. There is certainly a course that will suit you and your friends to a tee!

Niseko Village Golf Course

Carved out of a thick forest at the base of a popular winter resort, the Niseko Village Golf Course is a par 73 course at 6,845 yards. Excellent facilities, challenging layout and well manicured greens make the Niseko Village Golf Course a favorite among the locals. You will enjoy the experience of being confronted with one of the few par 6 holes in the world; the 10th measures 721 yards, out of bounds down the entire left side and water lurking in front of the green to catch the slightest miss hit approach. This par 6 could make or break your back nine!

- Par 73 course at 6,845 yards
- Weekdays 6,500 yen – 7,000 yen
- Weekends AM 9,000 yen – 10,500 yen
PM 8,500 yen – 9,500 yen
- Early season rates available

<http://www.niseko-village.com/en/niseko-resort-Golf-and-Summer-Fun>
Tel: +81(0)136-44-3311

Niseko Golf Course

Designed by Arnold Palmer, this Par 72 course is 6,805 yards long. With the choice of normal golf cart or bag only golf cart, Niseko Golf Course is a superb course to walk and soak up the unmistakably Niseko scenery, with magical views of Mt Yotei from the course. The signature hole is the par 3 fifth, an undulating green is guarded by bunkers and water; demanding a first-class golf shot while admiring the scenery from this slightly elevated course. The key to a good score is accurate driving as out of bounds areas are lurking close to the fairways. A short fifteen minute drive from Niseko town will have you standing on the 1st tee. An undisputed local favorite and a terrific place to enjoy true golf, Niseko-style.

- Par 72 course is 6,805 yards
- Weekdays – 5,800 yen
- Weekends 8,000 am / 7,000 yen pm. Early season rates.
- For more fee information visit the Niseko Golf Course website

<http://www.niseko-village.com/en/niseko-resort-Golf-and-Summer-Fun>
Tel: +81(0)136-44-3311

Niseko Tokyu Golf Course

Open since 1988, the Niseko Tokyu Golf Course is situated at the foot of the Hanazono ski resort. From the championship tees, this par 72 course measures 7003 yards and is an exciting mixture of challenging holes with spectacular views of the surrounding landscape. You will need to bring your "A" game to conquer this exquisite test of golf!

- Weekdays – 6,000 yen – 6,500 yen
- Weekends – 7,500 yen – 10,000 yen
- Early season rates available
- Comprehensive information on website.
(Japanese Only/ English subtitles)

<http://www.niseko-tokyu.co.jp/>
Tel: +81(0)136-23-0109

Niseko Golf and Resort

Another special Niseko golf experience! Up until June, snow capped peaks are visible from every tee. Niseko Golf and Resort requires accurate drives with precise iron play to conquer the constant elevation variations between tee and green.

Measuring in at an elusive 6,794 yards this course will keep you guessing until your last putt on the 18th green.

- Weekdays 5,500 yen
- Weekends 7,500 yen
- Early season rates available

No Website available.

Tel: +81(0)136-56-2121

Other Courses in close vicinity to Niseko

Rusutsu, Rankoshi, Otaru, Sapporo, Chitose

Cycling



Niseko Hill Climb held in August each year

Niseko is the perfect location to enjoy both on road and off road cycling. The many roads in the district offer a variety of scenery and a variety of gradients which to appeal to even the most accomplished cyclist. Relaxed, meandering rural roads through to challenging mountain roads such as the loop around Mt. Yotei or the Panorama line incorporating the Goshiki to Niseko line which is great for recreational cycling or training in the crisp refreshing air and beautiful scenery.

Cycling in Niseko is growing into a very popular pastime for locals and visitors and the region is experiencing growth in the international cycle touring circuit. There are many operators who can assist as guides and provide the support with maintenance necessary to have a fantastic time cycling this picturesque area. The Annupuri gondola provides a handy service for those that wish to try some serious mountain biking. During the summer months you can take your mountain bike on the gondola and enjoy the trails that lead down Mt Annupuri, while taking in the breathtaking scenery of Mt Yotei.

Mountain Biking/ Cycle Hire

Hokkaido Lion Adventure

+81(0)136-43-2882

<http://hokkaido.lion-adventure.com/> (Japanese)

Niseko Kotobuki

+81(0)136-55-8977

<http://niseko-toshiya.com/> (Japanese, English)

Niseko Mecca

+81(0)90-7340-6330

<http://www.niseko-mecca.com/> (Japanese)

Niseko Village (Pure)

+81(0)136-44-2211

<http://www.niseko-village.com/en> (English)



Niseko Green Bike

There is an eco-friendly FREE rental bike system which operates in Niseko during the summer. This program operates from mid-April (depending on snow melt) to the end of November.

- There are 6 stations located around Niseko for ease of pick-up and drop-off of the cycles.
- Hilton Niseko Village, Milk Kobo, Kiranoyu hot spring (In front of JR Niseko station), Michinoeki Niseko View Plaza, Hotel Kanronomori, Hotel Ikoinommura.
- One way hires are possible.
- Hours are 9:00 am – 17:00 pm daily.
- Cycle type is town cycle, some with and some without gears.
- You will require identification when renting the cycle.

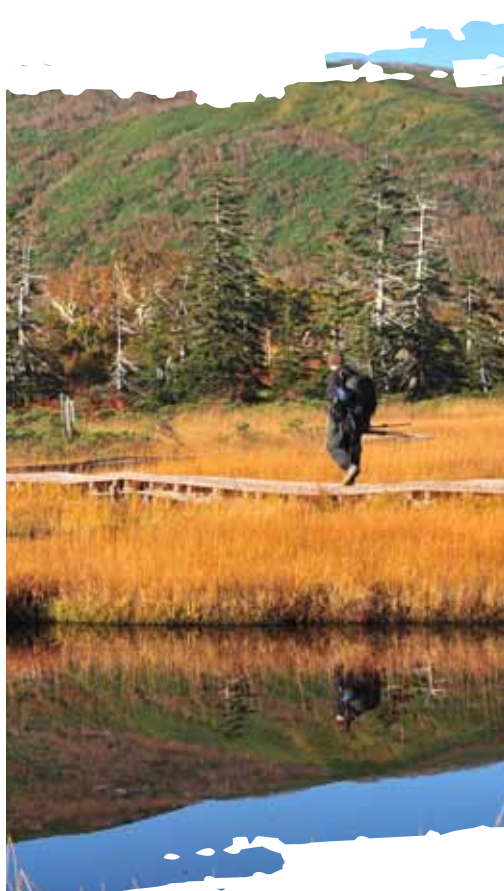
Information

<http://www.niseko-ta.jp>

Niseko Cycling Map

Niseko has produced a cycling map aimed at cycling enthusiasts from around the world, this map has been produced with the aim of keeping cyclists safe as well as increasing their enjoyment of the area. The map has been printed on a tear and water proof paper and contains 6 maps that highlight the very best that the region offers in terms of cycling experience. Copies of the map are available at accommodation providers and information centers across the district.

Hiking and Recreational Walking



Niseko area - home to some excellent hiking, onsen (hot springs) and 'National Forest Parkland'. Niseko is a popular destination for both outdoor enthusiasts and for those wishing to relax in the splendor of the Great Outdoors. Four distinct seasons keep the landscape interesting for outdoor pursuits.

Trails and Routes

The mountains and forests around Niseko can be enjoyed on a number of levels - driving, biking or hiking. Whatever you are into, you will be surprised at the variety of attractions and opportunities available.

Most of the mountain trails are predetermined with information and maps readily available from local tourist information centres. Some of the available courses are short, day-trip length courses while others are best enjoyed over several days.

A must for hiking enthusiasts is a climb up majestic Mt Yotei-Hokkaido's answer to Mt Fuji. This is a must during the warmer months of the year and should be included in most Niseko itineraries. It takes between 4 to 5 hours to the peak; there are 4 different start locations around the base of the mountain, all vary slightly in length and level of difficulty.

A slightly easier option is to climb Mt Annupuri - home to the Niseko ski fields; there are several choices of trail to reach the peak. From the Annupuri International Ski Resort. You can take a gondola ride to the 1000 metre platform. (Gondola access to the peak is also available at Grand Hirafu Ski Field from the gondola base). If you have a mountain bike you will be able to take it with you in the gondola and enjoy the ride down the mountain. (Hire Bikes are available)

If you are planning on hiking from the 1000 metre viewpoint to the peak, the trail is well marked and the climb is not too difficult. Other options for enjoying Mt. Annupuri are paragliding and in summer, at the base of the ski area you can enjoy hot air ballooning.

Niseko Town Walking Maps

There are several recommended footpaths, walking trails in Niseko, that have been selected for their different attributes and for the way in which they highlight the different areas.

These maps are available at information centres throughout the district.

Biking, Running and Walking Integrated Guidance System

Do you like to bike, run and walk? B.R.A.W is a free service for people visiting Hokkaido and who are looking for up to date information on courses suitable for the above activities. There are courses mapped out for Niseko and for Sapporo. These maps and course information can be used in real time by using a communication device connected to the internet. e).

For enquiries contact:

NPO Sapporo Convention Network

Tel: +81-(0)11-211-3676

Website: <http://www.sapporo-convention.net/>

Niseko Lakes and Marsh Explorer Map

Niseko area is rich in nature and there is no better way to get close to the nature available in the area than to use the Lakes and Marsh Explorer Map and explore some of the various trails on offer, the map is offered in Japanese only but is designed so this is not a handicap. Pick up a copy at a information center anywhere in the district

Niseko in the Media



Even in late March, the Japanese ski resort of Niseko is still getting plenty of fresh powder. An astounding 20m has fallen thus far and snow depth reached a peak of more than four metres.

Apres-ski in Niseko is often just as fun as zipping through the flakes and is best enjoyed with a rental car to let you take full advantage of the area's muscle-tenderizing onsen (hot springs).

(BBC Travel, 26 March 2012)

Sometimes the snowflakes here are large enough to cast shadows," said Pam Marks, a transplanted Canadian ski instructor who took me out on the mountain, adding that the skiing and snowboarding on even the regular slopes compare with world-class backcountry experiences she's had in North America.

(New York Times, January 15, 2012)

The landscape is breathtaking. While the beauty of the Alps and the Rockies is intense and dramatic, these slopes are subtle and somehow mystical. Even the way the snow falls, constant and gentle, creates a particular kind of quiet;

(New York Times, January 15, 2012)

Just what makes a classic ski town? It starts, naturally, with skiing and snowboarding so good they attract people like youth-bestowing fountains. Then add an inviting mountain burg steeped in ski heritage, amenities, and culture. These are the 25 best. For insider tips, we asked local luminaries where to stay, play, and party, whether you're on a budget or indulging.

(National Geographic, 'World's 25 best ski towns')

Thanks to the near-constant storm cycles pumping out of neighboring Siberia, the mountains on the Japanese island of Hokkaido are globally renowned for having some of the most consistent, lightest powder on Earth.

(National Geographic, 'World's 25 best ski towns')

Averaging a jaw-dropping 590 inches of snow a year, there's fresh powder more days than not on Niseko Annupuri and its abundant, lightly skied off-piste terrain

(National Geographic, 'World's 25 best ski towns')

It was a great week. It was a great event. Sad to say goodbye to everybody. We all hope to see everybody again at another World Airlines Ski Championship in Niseko very soon.

(WASC in Niseko, Japan via Facebook, March 2012)

From November through to April, icy winds from Siberia dump extravagant piles of snow on Hokkaido, the most northerly of Japan's four main islands – even in a 'bad season'. It is some of the lightest, driest powder on the planet.

(Martin Symington, Wanderlust Magazine UK, Issue 91, November 2007)

It's taken a while for word to get out, but Niseko is fast becoming one of those places like La Grave, France, and Nelson, British Columbia, that attracts the core of powder-skiing counterculture: the Europeans, South Africans, and Americans who will sell the truck, the bed, or otherwise do whatever it takes to ski deep snow in a foreign land.

(Bevin Wallace, Skiing Magazine, November 2004)

If you're a hardcore powder skier or boarder, Niseko's amazing snow means it must be on the list of "places to ski before you die".

(Patrick Thorne, The Independent, 7 March, 2010)

Are you planning on covering Niseko in the media?

Journalists visit Niseko on a regular basis, if you are looking to write or film an feature article on Niseko, please contact the Niseko Resort Tourist Association and they will provide you with the latest information on what is happening in Niseko and assist you in facilitating your trip.

Tel: +81(0)136-44-2420

<http://www.niseko-ta.jp>

Conference | Niseko Chomin Center



Niseko's foremost conference and event facility is located in a convenient and accessible location in central Niseko. This is the one stop location for all of your conference needs. If you are looking to stage a conference in Niseko, the staff at the centre will help facilitate your requirements to ensure the success of your conference or trade related show.

The dual purpose Citizens Community Centre and Conference and Event Centre is located in the business district of Niseko town and is minutes away from the Town Council Chambers and Niseko's only International School. The centre also houses the local Chamber of Commerce who manage the facility and provide support services where necessary.

There are numerous restaurants and bar facilities nearby and access from resort accommodation in the area is simple. The facilities opened in March 2012.

- All meeting rooms have wireless internet facilities. (fiber optic cabling)
- 4 large meeting areas, 1 area with a full stage, 3 smaller meeting rooms
- Japanese-style rooms for cultural activities or a cultural event.
- Modern facilities in the centre of town close to the resort areas and ski facilities.
- Library facilities, supermarket, post office, Japanese-style izakaya restaurants and bars etc all within 5 minutes walk.
- Located on local bus route, allowing easy access to and from

major resort areas

- Centre Management can provide local business solutions to ensure the success of your conference.

Sports Tourism

Niseko offers a range of sporting facilities (listed below) for hire. These facilities are all within close distance from the Chomin Center and there is easy access to accommodation and eateries from all of these facilities. For more details on these facilities contact the Niseko Town Education Department, Community Education Division.

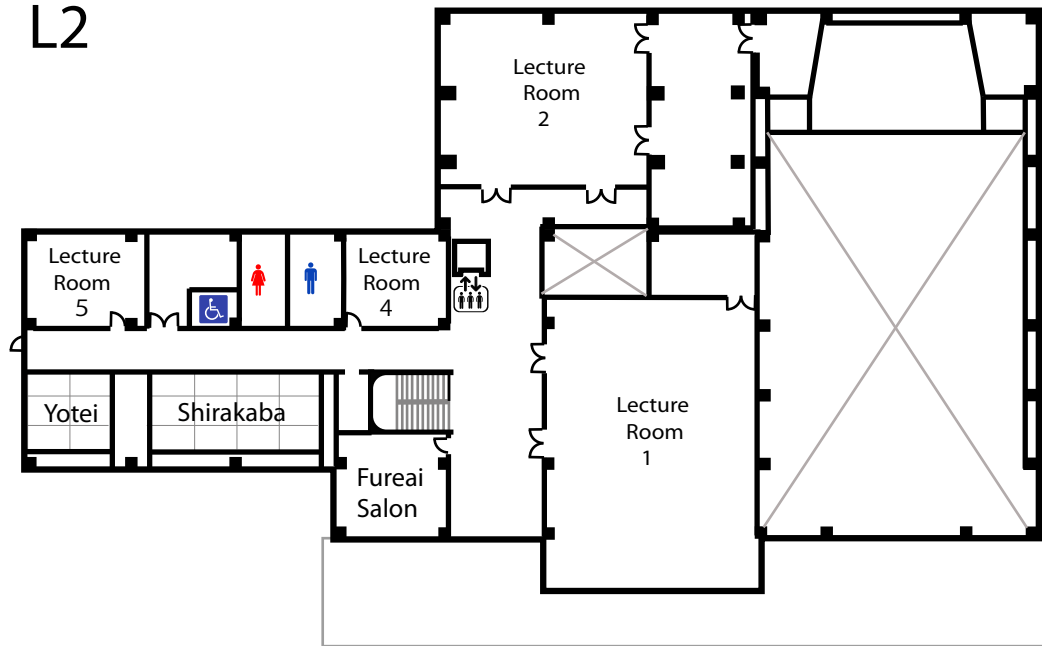
Tel: +81 (0)136-44-2034

- Town gymnasium
- Tennis courts
- Niseko Athletic Park (Baseball/ Softball/ Soccer/ Park Golf.)
- Track and Field Park



Conference | Niseko Chomin Centre Floor Plans / essential information

L2



L2

Lecture Room 1
12m x 16m
Capacity 108 people*

Lecture Room 2
12m x 12m
Capacity 72 people*

Fureai Salon
6m x 6m
Capacity 14 people*

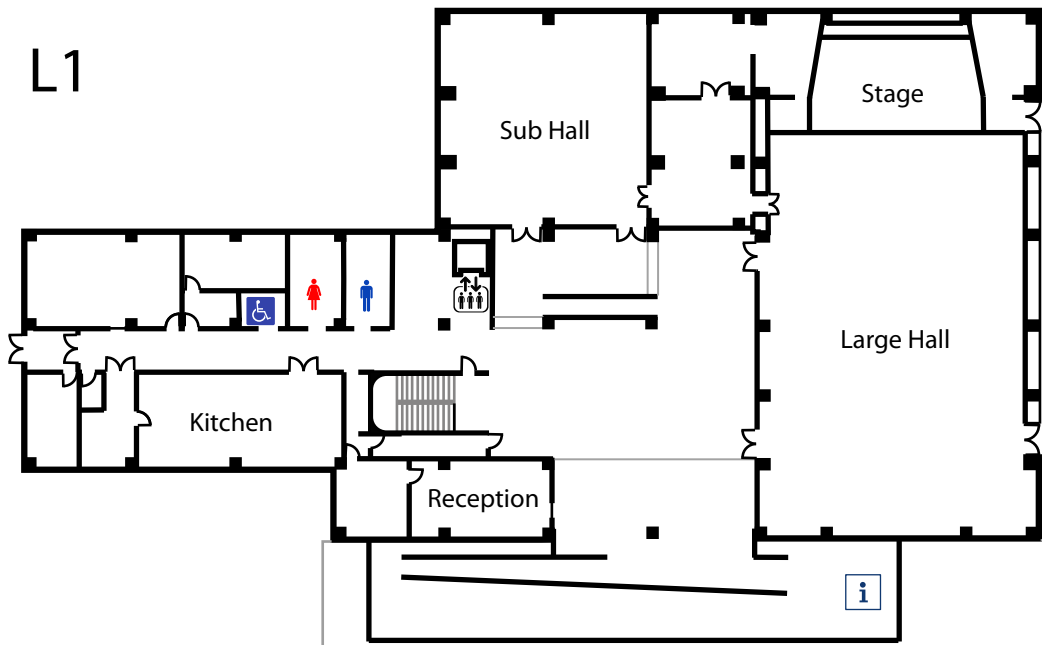
Lecture Room 4
6m x 5.5m
Capacity 16 people*

Lecture Room 5
6m x 5.5m
Capacity 14 people*

Japanese Room (Shirakaba)
12m x 5.5m

Japanese Room (Yotei)
6m x 5.5m

L1



L1

Large Hall
16m x 30m
Capacity 252 people*

Stage
8m x 5.4m

Sub Hall
11m x 12m
Capacity 72 people*

*Theatre Style Layout

Conference Table

Room Name	Length	Width	Height	Number
Main Hall	1800	600	700	60
Small Hall	1800	600	700	24
Lecture Room 1	1800	600	700	7
	1800	600	700	33
Lecture Room 2	1800	600	700	4
	1800	600	700	20
Fureai Salon	1800	600	700	4
	1500	600	700	2
Lecture Room 4	1800	600	700	4
	1500	600	700	2
Lecture Room 5	1800	600	700	4
	1500	600	700	2
Total Conference Tables				166

Conference Table

Room Name	Length	Width	Height	Number
Japanese Room (Shirakaba)	1800	450	330	14
Japanese (Yotei)	1800	450	330	6

Stacking Chair

Room Name	Length	Width	Height	Number
Main Hall	520	510	785	180
Small Hall	520	510	785	72
Lecture Room 1				120
Lecture Room 2				72
Fureai Salon				16
Lecture Room 4				16
Lecture Room 5				16
Total Number of Chairs				492

Folding Chair

Room Name	Length	Width	Height	Number
Japanese Room (Shirakaba)	442	440	745	10

Other Accessories

Room Name	Accessories	Length	Width	Height	Number
Main Hall	Speakers Podium	1200	600	1000	1
	Flower Stand	450	450	700	1
	Welcome Board	320	305	1105	1
	Notice Board	1200	19	900	3
Lecture Room 1	Podium	1200	600	1000	1
	Flower Stand	450	450	700	1
	White Board	1910	560	1800	1
Lecture Room 2	White Board	1910	560	1800	1
	Conference Sign Board	1200	22	1800	10
	Screen	1800		1530	4
Fureai Salon	White Board	1910	560	1800	1
Lecture Room 4	White Board	1910	560	1800	1
Lecture Room 5	White Board	1910	560	1800	1
Japanese Room (Shirakaba)	Large Mirror	495	395	1510	1
	Large Dresser	580	380	1450	1
	Spot Light	396	396	203	1



GREEN CONFERENCE FACILITY

Hotel | Conference | Hilton Niseko Village

Tel: +81 (0) 136-44-1111

Fax: +81 (0) 136-44-3224

Website: <http://niseko.hilton.com>

Address: Hokkaido, Abuta gun, Niseko Cho, Higashiyama Onsen

Contact: Sales

Guests and visitors can enjoy a range of outdoor activities at the Hilton Niseko Village Hotel, set at the foot of the breathtaking Niseko Annupuri mountain. Ski on powdery slopes during winter, or practice your swing on the 18-hole golf course during the summer months. Play a game of tennis, stay in shape in the hotel's fitness centre or take in the magnificent scenery as you soak in the natural hot spring bath. After a day on the slopes enjoy a warming drink in Flame, Bar and Lounge or sample delicious Teppanyaki in the stylish Japanese Restaurant, Ren. Hold your next business meeting or conference at the Hilton Niseko Village hotel and choose from 5 meeting rooms suitable for up to 800 guests, or simply treat the family with a visit to this action-packed destination.

There is a specialist event team available to provide the support necessary to make your conference not only a reality but also a success.

Location and Access

located on the southern slopes of the world famous Niseko Annupuri Mountain in Eastern Hokkaido, Northern Japan. Well connected by road and train, the hotel is a convenient 2 hour drive from Sapporo city and 2 hours from Chitose Airport. Buses are available daily during winter season. If travelling from Sapporo city, take highway 230 and follow route 5 to Niseko.

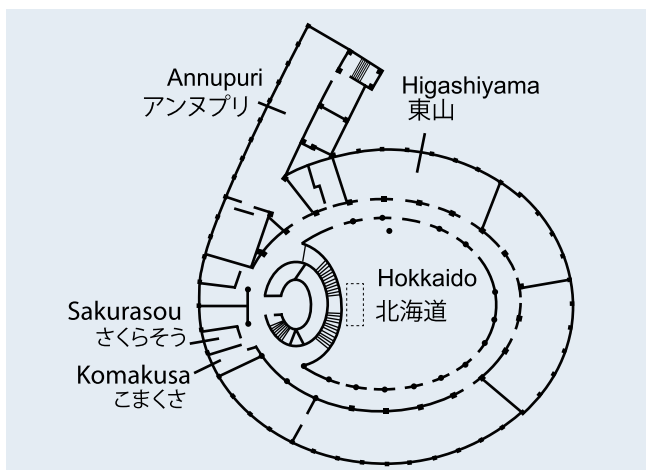
- Free shuttle bus available from the Kutchan Station; please check with the Hotel for details.

Facility Details

- 5 Conference Rooms
- 506 Guest Rooms
- 1 Suite Room
- WIFI Internet available 1F - 3F
- Lan cable internet connections available in the individual guest rooms
- Non smoking rooms available
- 4 restaurants and 1 bar
- Fitness and health club
- Graded in the 2012 Michelin Hokkaido guidebook

Conference Facility Information

Name	Total Sqm	Room Size	Ceiling Height	Classroom	Theatre	Banquet	Reception	Boardroom	U-Shape	Hollow Square
Annupuri	300	37.8m x 8.0m	3.3m	170	280	160	260	56	52	56
Higashiyama	250	27.0m x 7.6m	3.3m	110	180	130	230	48	44	48
Hokkaido	820	28.5m x 30m	7m to 46m	420	900	400	800	72	56	72
Sakurasou	30	7.0m x 4.0m	3.3m	12	25	18	-	8	12	8
Komakusa	30	7.0m x 4.0m	3.3m	12	25	18	-	8	12	8

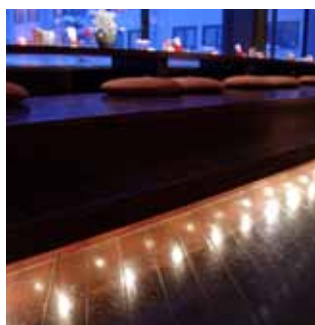


Layout of conference facilities



Hokkaido 22.0m x 25.0m

Hotel | Conference | Hotel Kanronomori



Tel: +81 (0) 136-55-3800

Fax: +81 (0) 136-58-3107

Website: <http://www.kanronomori.com> Japanese and English

Address: Hokkaido, Abuta gun, Niseko cho, Niseko 415

Contact: Sales

Hotel Kanronomori is located on the edge of the Niseko Shakotan Otaru Kaigan quasi national park. The hotel takes pride in its market position as one of Niseko's only Japanese-style ryokan hotels. The hotel's concept is to provide value for money and an experience that exceeds guests' expectations.

There are 10 different types of room layout and a total of 78 guest rooms, bed configurations range from twin rooms to tatami-style rooms and there are deluxe and suite rooms available. (incl private hot springs). There are several large function rooms that are available for group usage or large dinner parties. Plans and quotes can be put together depending on group size and requirements. The meeting rooms in the Hotel are western-style and functions can be held in either western or Japanese-style rooms. The hotel can also arrange weddings, if you are looking for a wedding alternative.

Location and Access

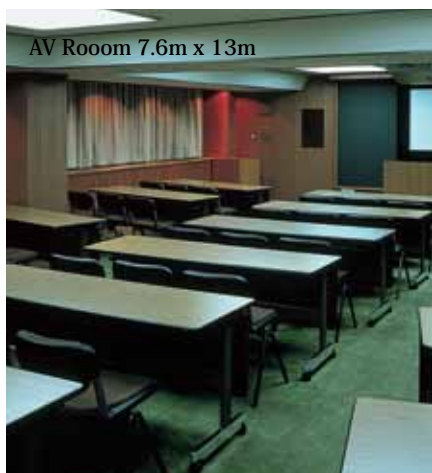
Located in the Konbu district of Niseko, the hotel is easily accessed using the Fureai Shuttle bus or by prior arrangement the hotel will transfer guests to and from the Niseko JR station. In winter there are free shuttles operating on a regular basis to and from the ski fields, making this an ideal getaway-style location for conferences or holidays.

Facility Details

- 2 Conference rooms
- 400 chairs
- Total combined area space: 230m²
- 78 Guest Rooms
- 2 Suite Rooms
- 2 Japanese/ Western-style rooms
- 2 Deluxe Western-style rooms
- Wireless internet available inside the hotel building.
- 2 Restaurants and 1 bar
- 2 Karaoke lounges
- 3 Japanese-style function/ meeting rooms
- Fitness and health club
- Hot spring
- Graded in the 2012 Michelin Hokkaido guidebook

Conference Facility Information

Name	Total Sqm	Room Size	Ceiling Height	Classroom	Theatre	Banquet	Reception	Cabaret	Boardroom	U-Shape	Hollow Square
AV Room	50	7.6m x 13m	2.3m	40	80				32	28	60
Ichii	140	8.6m x 15.8m	2.4m	60	130	80	100		44	38	44



Equipment	Number	Measurements
Conference Tables	40	
Round Tables	18	
Chairs	160	
Projector	1	
CD Player	2	
DVD Player	1	
Spotlights	2	
Stage	3	240 x 12 x 40
	3	180 x 140 x 20
Speaker Podium	2	
Microphone	4	
Cordless Microphone	2	
Relocatable Speakers	4	

Hotel | Conference | Niseko Hotel Ikoi no Mura



Tel: +81 (0) 136-58-3111

Fax: +81 (0) 136-58-2351

Website: <http://www.niseko-ikoi.com/> (Japanese and English)

Address: Hokkaido, Abuta gun, Niseko cho, Niseko 473

Contact: Sales

Hotel Niseko Ikoi no Mura is the perfect place to become at one with nature in spacious and natural surroundings. Relaxation, revitalization and tantalization are all keywords when describing the onsen and dining experiences that can be enjoyed here. The benefits of bathing in the spacious outdoor rock pools are self explanatory and an experience not to be missed all year round. The hotel has 2 western style conferences rooms and there is a choice of 3 restaurants, western/ japanese or popular Gingsis Kan-style lamb BBQ. The location near the base of the Annupuri International Ski Resort means that in winter you can hold a meeting in the morning and enjoy hassle-free skiing in the afternoon.

Location and Access

Located in the Konbu district of Niseko, the hotel is easily accessed using the Fureai Shuttle bus or by prior arrangement the hotel will transfer guests to and from the Niseko JR station. This ideal getaway-style location for conferences or holidays.

More hotel information can be found in English at <http://www.niseko-ikoi.com/en/index.html>



Facility Details

- 2 Conference Rooms
- Total combined area space: 587.0m²
- 24 Guest Rooms
- 20 Japanese Style Rooms
- 3 Western Style Rooms
- 1 Twin Room
- LAN cable or fiber optic internet available inside the hotel building.
- 3 Restaurants
- 2 Japanese-style function/ meeting rooms
- Hot springs

Conference Facility Information

Name	Total Sqm	Room Size	Ceiling Height	Classroom	Theatre	Banquet	Reception	Caberet	Boardroom	U-Shape	Hollow Square
Yotei	180	20m x 9m	2.76m								
Fuyo	105	14m x 7.5m	2.5m	50	70	30	50				
Lilac	198	18m x 11m	3m	150	200	100	150			45	50
Nanakamado	104	13m x 8m	2.6m							25	30



Nanakamado 13m x 8m



Lilac 18m x 11m



Yotei 20m x 9m



Fuyo 14m x 7.5m

Equipment	Number	Measuments
Conference Tables	Sufficient	
Round Tables	Sufficient	
Chairs	Sufficient	
Projector	1	
CD Player	1	
DVD Player	1	
Spotlights	n/a	
Stage	1	240 x 12 x 40
Speaker Podium	1	
Microphone	10	
Cordless Microphone	2	
Relocatable Speakers	n/a	

Hotel Accommodation



Niseko Konbu Onsen Tsuruga Bessou Mokunosho

Tel: +81 (0) 154-67-4000

Fax: +81 (0) 154-67-2754

Website: <http://www.mokunosho.com/>

Address: Hokkaido, Abuta gun, Niseko cho, Niseko 393

Contact: Reservations

Mokunosho is the Tsuruga Groups 10th addition to their chain of well known and highly respected resort properties in Hokkaido. Konbu onsen district is Niseko's largest onsen district and is the perfect place to relax and unwind. The concept of this hotel is about becoming one with nature, the location allows easy access to the great outdoors that Niseko is so well known for.

Facility Details

- Total 25 rooms
- Suite room private outdoor hotspring 6 rooms
- Suite room private hot spring with a view 4 rooms
- Twin room 12
- Special suite with cypress hot spring 1
- Special twin suite with outdoor hotspring
- One japanese room
- Body massage, facial massages, foot treatments available



The Green Leaf Hotel Niseko Village

Tel: +81 (0)136 44 3311

Fax: +81 (0)136 44 3988

Website: <http://www.thegreenleafhotel.com/> (Japanese and English and other languages are available)

Address: Hokkaido, Abuta gun, Niseko Cho, Higashiyama Onsen, Japan

Contact: Reservations

Located at the base of Mount Annupuri, The Green Leaf Niseko Village lies in the heart of one of the world's best skiing destinations. The recent hotel refurbishment has produced stunning results, garnering awards and accolades since its launch in 2010. Inspired by an infusion of world-class design, local artistry and breath-taking scenery, the 200-room destination hotel provides an inviting ski-in ski-out base, tranquil spa and natural onsen facilities, complimentary wireless internet service and a fantastic variety of bar and dining options featuring local seafood and seasonal Hokkaido produce. The Hotel embraces the creative touch of renowned local graphic installations by Emi Shiratori featured throughout the hotel.

- 200 western-style rooms
- Total capacity 592 people
- Ski-in, Ski-out
- Award winning modern designer hotel
- Restaurant and Bar area
- Wireless Internet throughout hotel
- Massage/ hot spring



Hotel Accommodation



Niseko Northern Resort Annupuri Hotel

Tel: +81 (0)136-58-3111

Fax: +81 (0)136-58-3317

Website: <http://www.niseko-northern.com/en/> (Japanese and English)

Address: Hokkaido, Abuta gun, Niseko Cho Niseko 480-1

Contact: Reservations

Located at the base of the Annupuri International Ski Resort, Niseko Northern Resort Annupuri Hotel is a luxurious Ski in and Ski out option for visitors to Niseko. The rooms are well designed and the hotel has a very unique feel to it. The staff have a lot of local knowledge and the service is second to none. There are 2 main restaurants in the hotel and a relaxing bar and lounge area with a large open fire and picture windows looking out over the ski area.

Facility Details

- Total capacity 439 people
- 152 Western style rooms. (10 double rooms, 137 twin rooms, 5 suite rooms)
- Restaurant capacity 173 people. Japanese Restaurant 85 people.
- Ski-in, Ski-out
- Designers hotel
- Bar and library
- Internet
- Massage/ Hot Spring (In house Guests Only)
- Lobby Shop
- Graded in the 2012 Michelin Hokkaido guidebook



Niseko Grand Hotel

Tel: +81 (0)136-58-2121

Fax: +81 (0)136-58-3258

Website: <http://www.niseko-grand.com/> (Japanese only)

Address: Hokkaido, Abuta gun, Niseko Cho, Niseko 412, Japan

Contact: Reservations

Niseko Grand Hotel is located in the Konbu Onsen (hot spring) District of Niseko and boasts the area's only unisex onsen facility. The thermal water of the Niseko Grand Hotel have rejuvenating qualities that people travel from all over Japan to enjoy. The Niseko Grand Hotel is located on the main bus routes which translates to easy access, the rates are affordable and the various outdoor activities that are on offer in Niseko can be enjoyed using this hotel as a base.

Facility Details

- 31 Western-style rooms, 24 Japanese-style rooms, 14 Western/ japanese Combination Rooms.
- Total capacity 260 people
- Youth rejuvenating hot spring (unisex)
- 2 large function rooms



Hotel Accommodation



Annupuri Onsen Yugokorotei

Tel: +81 (0)136-58-2500

Website: <http://www.niseko-annupurionsen.com/reserve/index.html>
(Japanese only)

Address: Hokkaido, Abuta gun, Niseko Cho, Niseko 438, Japan

Contact: Reservations

Annupuri Onsen Yugokorotei Hotel is located near the entrance to the Annupuri International Ski area and boasts one of Niseko's best outdoor hot springs. The hotel is a boutique style hotel and the rooms are spacious and the staff are very friendly.

Facilities

- 12 Japanese-style rooms, 2 western-style rooms, 1 suite room.
- Total capacity 54 people
- Natural rock style outdoor onsen (hot spring)



Annupuri Village

Tel: +81 (0)136-59-2111

Fax: +81 (0)136-59-2112

Website: <http://www.annupurivillage.com> (Japanese and English)

Address: 048-1592 Hokkaido, Abuta gun, Niseko Cho, Niseko 432-21 Japan

Contact: Reservations

Annupuri Village provides the highest levels of personalized service ranging from accommodation related services to real estate and development services. The Annupuri Village concept is made up of quality North American style houses elegantly placed in a superb location near the base of the Annupuri International Ski field. The staff have extensive knowledge and experience between them and can arrange the finer points of your stay.

Facilities

- 4 Western-style homes, which can accommodate up to 10 people per home.
- Fully serviced, self contained, luxury homes, in a superb location.
- Transportation available
- Wireless internet
- Concierge service



Hotel Accomodation/Activities



One Niseko Resort Towers

Tel: 0136-50-2111

Website: <http://www.oneniseko.com/> (Japanese/ English)

Address: Hokkaido Abuta gun, Niseko Cho, Niseko 455-3, Japan

Contact : Reservations

One Niseko is located conveniently close to the Moiwa Ski Resort and the Annupuri International Ski Area. The Hotel boasts easy access to and from the Chitose International Airport and locations within Niseko. You will be enchanted by the spectacular veivs of the surrounding semi quasi national park. Modern self contained rooms and restaurant facilities are on offer to help make your Niseko experience even more enjoyable. One Niseko Resort where your Niseko holiday begins.. This property is perfect for guests looking for a long stay alternative in Niseko.

Facilities

- 105 Rooms, (incl 2 Penthouses) Room sizes range from 47sqm to 229 sqm
- Non smoking rooms
- Japanese Hot Spring on the 2nd floor
- Restaurant/Cigar bar on the 10th floor

Details

- All rooms have seperate bath and toilet, satellite television, high speed internet connections, DVD player, telephone, kitchen/ utensils/ dinnerware included, microwave oven, refrigerator, vacuum cleaner, iron, hairdryers



SUP Niseko

SUP is a popular new way of enjoy the waterways that can be found in Niseko, it is a form of river surfing, the board is wide and stable and riders stand on the board and paddle downstream using a oar, in areas where there are rapids the ride becomes a little more exciting.

Address:

Hokkaido, Abuta gun, Niseko Cho, Aza Niseko 481-1

Tel:

+81(0) 136-54-2820

Fax:

+81(0) 136-54-2821

Website: http://www.guide.co.jp/sup_niseko/



Hokkaido Lion Adventure

Hokkaido Lion Adventure has gathered together a staff of people who personally love to have fun! All our guides are experienced, qualified professionals so even complete beginners can feel at ease and have a great time in Niseko.

Activities:

River rafting, hot air ballooning, cycling, mountain biking, nature guides, ski/snowboard instruction, snow mobiling

Address:

Hokkaido, Abuta-gun, Niseko-cho, Chuo-dori 142-5

Tel:

+81(0) 136-43-2882

Fax:

+81(0) 136-43-2883

Website:

<http://hokkaido.lion-adventure.com/>

<http://www.noc-hokkaido.jp/e/>

Activities



Niseko Outdoor Center

The staff at Niseko Outdoor Center have extensive knowledge when it comes to the Great Outdoors and the Niseko area. There are a wide range of unique and fun activities to choose from and groups can be catered for with ease. When you are looking for some activities to enhance your holiday or conference, give Niseko Outdoor Center a call.

Activities:

Canoe tour, nature tour, trekking, fishing, indoor activities, snow shoe down hill tour, snow shoe nature tour, nature ski, igloo building, all mountain guides, ski snowboard instruction.

Address:

Hokkaido, Abuta-gun, Niseko-cho, Chuo-dori 142-5

Tel:

+81(0) 136-43-2882

Fax:

+81(0) 136-43-2883



Niseko Kotobuki

Toshiya Sato is a professional skier and has a team of professionals that he can call upon to provide the very best in Backcountry experiences. Niseko Kotobuki has a Sports and Outdoor store located at Milk Kobo in Higashiyama and if Kotobukiya do not stock it then they will certainly find the items that you are looking for.

Activities:

Ski and snowboard instruction, backcountry tours, mountain biking, river kayaking experience, sporting equipment retail outlet.

Address:

Hokkaido, Abuta-gun, Niseko-cho, Soga 888-1 (Milk Kobo)

Tel:

+81(0) 136-55-8977

Website:

<http://niseko-toshiya.com/SHOP.html> (English and Japanese)



Outdoor Amusement Company

Outdoor Amusement Company put customer safety first in all of the activities that they offer. They have a large portfolio of activities for people of all ages to enjoy, ranging from rafting to hot air ballooning. All staff are highly trained and go out of their way to ensure customers have the best experience possible.

Address: 北海道虻田郡ニセコ町字曾我859-5

Tel: +81(0) 136-55-8128

Fax: +81(0) 136-55-8129

Website: <http://www.oac-japan.com/>



Niseko Mecca

Niseko Mecca is a local guiding company providing back country guiding services.

During the green season, they also provide unsurpassed mountain guiding services and are registered members of the Japan Mountain Guide Association and great emphasis is placed on training and safety.

Mountain bike and cycling guides and expert team building exercise organizers.

Tel:

+81(0)90-7340-6330

Website:

<http://www.niseko-mecca.com/> (Japanese)



Niseko Fine

Niseko Fine offer a wide range of both summer and winter activities in Niseko and also provide a ski equipment hire and tuning service.

Activities:

Ski and snowboard instruction, back country guides, Snowshoe guides, school group ski instruction, canadian canoeing, fishing, photospot introductions, indoor hand crafts.

Address:

Hokkaido, Abuta gun, Niseko cho, Niseko 431-1

Tel:

+81(0)136-58-3568

Website:

<http://www8.plala.or.jp/niseko-fine/>



Niseko Village

Niseko Village is one of Niseko's Leading Resorts and has a host of activities for people to choose from.

Activities:

Ski School, Rental Equipment, Snow Shoe Tours, Snow mobiling, Cross Country Skiing, Snow rafting, Reindeer Sledding,, Kids School, Outdoor Adventure area, Pure, Golf, Horse riding, Tennis.

Address:

Hokkaido, Abuta gun, Niseko cho, Higashiyama Onsen

Tel:

+81(0)136-44-2211

Website:

www.niseko-village.com/en



Niseko Global Ski Academy

NGSA(Niseko Global Ski Academy) is an independent ski school based in Japanese powder resort "Niseko".

We are not a ski school the same as those based at the resorts.

We are a team of professionals, that offer a high level of service and a deep experience for snow enthusiasts from around the world.

Activities:

Ski and snowboard instruction, telemark lessons, powder guiding.

Address:

Hokkaido, Abuta gun, Niseko cho, Soga 426-20

Tel:

+81(0)136-44-1680

Website:

<http://www.ngsa-web.com/ngsa.html>



Image Works

Image works are Audio Visual professionals who can make a DVD of your conference or backcountry skiing experience. They also provide Back country guiding services

Activities:

Back country tours, ski and snowboard lessons

Tel:

+81(0) 136-44-11179

Website:

<http://www.iwniseko.com/>

Activities



Saison Club

Saison Club is one of Niseko's activity mecca's, the activities on offer cater to everyone's needs and range from craft making to fishing to ballooning and horseriding. There is also a cafeteria/ restaurant on site so you can enjoy relaxing after enjoying some fun activities.

Activities:

Horseriding, rafting, ecorafting, Hot Air Ballooning experience, Ducky, Trekking

Address: Hokkaido, Abuta gun, Niseko Cho, Aza Soga 355-2

Tel: +81 (0) 136-44-3380

Website: <http://www.saisonclub.com/cn1/cn7/842>.



Niseko Powder Company Limited

The Niseko Powder Company are Powder ski professionals and also operate a Gentem Stick demo rental service. They operate a wide range of Ski and Snowboard Lessons and during the summer months operate a mountain bike service. You can find the Niseko Powder Company team at the base of the Annupuri International Ski Area.

Activities:

Ski and snowboard instruction, backcountry tours, mountain biking, Gentem Stick demo rental service.

Address:

Hokkaido, Abuta-gun, Niseko-cho, Niseko 481-1 (Annupuri Ski Field)

Tel: +81(0) 136-54-2820

Website:

<http://www.powcom.net/> (English and Japanese)



Niseko Country Farm

Niseko Country Farm provides a Horse riding experience that is perfect for beginners through to intermediate riders. Enjoy the ambience of the Western style stables and the views from the property. Everyone is always welcome.

Activities:

- First horse riding challenge
- Led horse riding
- Adventure horse riding

Address: Hokkaido, Abuta gun, Niseko Cho, Tomikawa 12-25

Tel: +81 (0) 136-44-1900

Website: <http://nisekocountryfarm.com/index.htm>



K2 Stables

K 2 Stables is located in Niseko town and designed to allow patrons to really enjoy horseriding as a sport. The owners aim is to get as many people as possible appreciating horseriding and has made great efforts to ensure that the atmosphere of the stables and the horse riding itself is a seamless experience. In the winter K2 stables offer snow shoe trekking and snowmobiling in addition to winter horseriding activities. (dependant on the weather)

Activities:

(Summer Menu)

Basic Course, Led Horseriding, Half Course and Long Course

(Winter Menu) Winter Package, Winter Horse Riding, Led Horse riding.

Address: Hokkaido, Abuta gun, Niseko Cho, Satomi 238-5

Tel: +81(0) 136-44-3788

Website: <http://k2stable.com/>



Takedaya Rafting

Takedaya Rafting offers a variety of activities that are suited to families with young children. The activities are suitable for children aged 2 years plus and allow the entire family to experience the outdoors in a way which was not possible.

The courses are especially selected so that families and people with disabilities feel safe but at the same time can experience the fun of rafting. Because it is possible to hire out a boat exclusively for your own use, pets can also join you on your rafting experience.

Activities:

- Takedaya Gentle Rafting Course
- Takedaya Rafting Course
- Takedaya VIP rafting course (Chartered boat)

Address: Hokkaido, Abuta gun, Niseko Cho, Aza Niseko 165-5

Tel: +81 (0) 136-55-8559

Website: <http://www.takedayah.com/>



Black Diamond Tours

Enjoy a Niseko snow experience like none other with experienced guides from BD Tours. These guides have extensive experience in Niseko and overseas and over a wide range of guiding services for Skiers and Snowboarders. If you are looking for a back country guide and experience to remember then BD Tours have the product for you.

In Resort Guiding Services (Half Day/ Full Day)

Back Country Tour (Half Day and Full Day)

Activities:

learn the rules and manners of the backcountry, in half a day it is possible to get in 2 to 3 runs. For experienced Skiers there are special excursion tours to Mt Yotei.

Address: Hokkaido, Abuta gun, Niseko Cho, Higashiyama 24-3

Tel: +81 (0) 136-44-1144

Website: <http://www.bdlodge.com/japanese/tours.html>



Boutique Accommodation (Condominium, Pensions, Rental Cottages, Camping Areas)

Auberge de Fryingpan



Tel: +81-(0)136-58-2832
Location: Annupuri
Type: Pension
Capacity: 9 western-style rooms
Total capacity: 24
Services: credit card, internet, transportation by arrangement
Comment: dining facility

Country Inn Milky House



Tel: +81-(0)136-58-2200
Location: Annupuri
Type: Pension
Capacity: 10 western-style rooms, 3 western/japanese combination rooms, 1 cottage
Total capacity: 40
Services: credit card, internet
Comment: Log house
Extensive local knowledge

Sharomu



Tel: +81-(0)136-58-3190
Location: Annupuri
Type: Pension
Capacity: 7 western-style rooms
Total capacity: 19
Services: Pets OK
Comment: Extensive local knowledge

Pension Amandan



Tel: +81-(0)136-59-2600
Location: Annupuri
Type: Pension
Capacity: 7 western-style rooms
Total capacity: 20
Services:
Comment: Restaurant, extensive local knowledge

Pension Tabi no yado Ginkei



Tel: +81-(0)136-58-2323
Location: Annupuri
Type: Pension
Capacity: 8 western-style rooms
Total capacity: 20
Services: internet, transportation by arrangement
Comment: Extensive local knowledge, non smoking

Pension Ginsekai



Tel: +81-(0)136-58-2825
Location: Annupuri
Type: Pension
Capacity: 5 western-style rooms, 1 japanese-style room
Total capacity: 19
Services: Pets OK
Comment: Extensive local knowledge

Pension Cotton Farm



Tel: +81-(0)136-58-2227
Location: Annupuri
Type: Pension
Capacity: 8 western-style rooms
Total capacity: 30
Services: Pets OK
Comment: Owner is keen fisherman, Restaurant, extensive local knowledge

Restaurant and Pension Bistare Kana



Tel: +81-(0)136-58-3330
Location: Annupuri
Type: Pension
Capacity: 5 western-style rooms
Total capacity: 20
Services: Transportation by arrangement
Comment: restaurant, extensive local knowledge

Lodge Mokoro Annupuri



Tel: +81-(0)136-58-2269
Location: Annupuri
Type: Pension
Capacity: 8 western-style rooms
Total capacity: 20
Services: Credit card, internet, transportation by arrangement
Comment: English ok, extensive local knowledge

Pension Jazz Club



Tel: +81-(0)136-58-2323
Location: Annupuri
Type: Pension
Capacity: 8 western-style rooms
Total capacity: 20
Services: Internet, transportation by arrangement
Comment: Non smoking, extensive local knowledge

Pension Tomten



Tel: +81-(0)136-58-3252
Location: Annupuri
Type: Pension
Capacity: 8 western-style rooms, 1 japanese-style room
Total capacity: 28
Services: Transportation by arrangement, Pets OK
Comment: Extensive local knowledge

Pension Fukinotou



Tel: +81-(0)136-58-2623
Location: Annupuri
Type: Pension
Capacity: 11 western-style rooms
Total capacity: 25
Services: Pets OK
Comment: Extensive local knowledge

Boutique Accommodation (Condominium, Pensions, Rental Cottages, Camping Areas)

Pension Bellary



Tel: +81-(0)136-58-2763
Location: Annupuri
Type: Pension
Capacity: 11 western-style rooms, 2 japanese-style room
Total capacity: 40
Services: Credit card, internet
Comment: Disabled access, extensive local knowledge

Pension Pommes de Terre



Tel: +81-(0)136-58-2543
Location: Annupuri
Type: Pension
Capacity: 7 western-style rooms
Total capacity: 20
Services:
Comment: Extensive local knowledge

Niseko Tabimonogatari



Tel: +81-(0)136-58-3149
Location: Annupuri
Type: Pension
Capacity: 5 western style rooms
Total capacity: 14
Services: Credit card, internet
Comment: Extensive local knowledge

Lodge Woodpeckers



Tel: +81-(0)136-58-2479
Location: Annupuri
Type: Pension
Capacity: 4 western-style rooms, 3 western/japanese combination rooms
Total capacity: 35
Services: Internet, transportation by arrangement, pets OK
Comment: Extensive local knowledge

Field Merry



Tel: +81-(0)136-44-3618
Location: Higashiyama
Type: Pension
Capacity: 3 western-style rooms
Total capacity: 8
Services: Transportation by arrangement, pets OK
Comment: Extensive local knowledge

Pension Niseko Star Hill



Tel: +81-(0)136-44-1234
Location: Higashiyama
Type: Pension
Capacity: 2 western-style rooms, 4 Japanese style rooms
Total capacity: 23
Services: Transportation by arrangement
Comment: Extensive local knowledge

Pension hourglass



Tel: +81-(0)136-43-2180
Location: Higashiyama
Type: Pension
Capacity: 5 western-style rooms
Total capacity: 10
Services: Internet, Transportation by arrangement
Comment: Restaurant, extensive local knowledge

Pension Nirinkan



Tel: +81-(0)136-44-2888
Location: Higashiyama
Type: Pension
Capacity: 4 western style rooms, 1 japanese-style room
Total capacity: 21
Services: Transportation by arrangement
Comment: Extensive local knowledge

Pension Banff



Tel: +81-(0)136-44-3113
Location: Higashiyama
Type: Pension
Capacity: 5 western-style rooms
Total capacity: 25
Services: Transportation by arrangement
Comment: Extensive local knowledge

Pension Brook



Tel: +81-(0)136-44-3199
Location: Higashiyama
Type: Pension
Capacity: 8 western-style rooms, 2 japanese-style rooms
Total capacity: 38
Services: Internet, transportation by arrangement, pets OK
Comment: Extensive local knowledge, smokery (small goods etc)

Pension Liberty House



Tel: +81-(0)136-44-2581
Location: Higashiyama
Type: Pension
Capacity: 2 japanese-style rooms, 2 western-style rooms, 1 western/japanese combination room
Total capacity: 25
Services:
Comment: Extensive local knowledge

Niseko Yasuraginoyado Senshukan



Tel: +81-(0)136-58-2105
Location: Konbu
Type: Pension
Capacity: 3 western-style rooms, 7 japanese-style rooms
Total capacity: 34
Services: Transportation by arrangement, pets OK
Comment: Restaurant, extensive local knowledge

Boutique Accommodation (Condominium, Pensions, Rental Cottages, Camping Areas)

Pension Ganba



Tel: +81-(0)136-58-2511
Location: Konbu
Type: Pension
Capacity: 1 western-style room, 4 japanese-style rooms
Total capacity: 15
Services: Internet, transportation by arrangement
Comment: Disabled access, extensive local knowledge

Karamatsu Sansou Yodel



Tel: +81-(0)136-58-3222
Location: Moiwa
Type: Pension
Capacity: 2 western-style rooms, 2 japanese-style rooms, 7 suite rooms
Total capacity: 51
Services: Internet, transportation by arrangement, pets OK
Comment: Extensive local knowledge

Moiwa Lodge Niseko



Tel: +81-(0)136-58-3003
Location: Moiwa
Type: Pension
Capacity: 6 western-style rooms, 3 japanese-style rooms, 5 Bunk rooms
Total capacity: 82
Services: Transportation by arrangement, pets OK
Comment: Extensive local knowledge

Yamayado and Shizen Kobo Ururi



Tel: +81-(0)136-58-2957
Location: Moiwa
Type: Pension
Capacity: 4 western style rooms, 2 western/japanese combination rooms
Total capacity: 15
Services: Internet
Comment: Extensive local knowledge

Hotel Resort Inn Niseko



Tel: +81-(0)136-44-3811
Location: Satomi
Type: Pension
Capacity: 5 western-style rooms, 2 japanese-style rooms
Total capacity: 18
Services: Credit Card, Internet, Transportation by arrangement, pets OK
Comment: Extensive local knowledge

Pension and Restaurant You You



Tel: +81-(0)136-44-3302
Location: Soga
Type: Pension
Capacity: 2 western-style rooms, 3 Japanese-style rooms
Total capacity: 16
Services:
Comment: Restaurant

Inaka Yado Kiitos



Tel: +81-(0)136-44-2822
Location: Soga
Type: Pension
Capacity: 5 western-style rooms, 1 Japanese-style rooms
Total capacity: 18
Services: Credit card, internet, transportation by arrangement
Comment: Extensive local knowledge

Pension Fumi Fumi



Tel: +81-(0)136-44-3625
Location: Soga
Type: Pension
Capacity: 6 western style rooms
Total capacity: 25
Services: Internet, transportation by arrangement
Comment: Extensive local knowledge

Pension Rupoze



Tel: +81-(0)136-44-1155
Location: Soga
Type: Pension
Capacity: 4 western-style rooms, 1 japanese-style room
Total capacity: 18
Services: Transportation by arrangement
Comment: Extensive local knowledge

Lodge 10



Tel: +81-(0)136-44-2910
Location: Soga
Type: Pension
Capacity: 5 western-style rooms
Total capacity: 18
Services: Internet, transportation by arrangement, pets OK
Comment: Restaurant, extensive local knowledge

Lodge Mont Blanc



Tel: +81-(0)136-44-1117
Location: Soga
Type: Pension
Capacity: 1 western-style room, 2 western/japanese combination rooms
Total capacity: 26
Services: Transportation by arrangement
Comment:

Niseko Bremen Lodge



Tel: +81-(0)136-55-8128
Location: Soga
Type: B&B (Bed and Breakfast)
Capacity: 7 Western rooms
Total Capacity: 20
Services:
Comment: Sausages, Fresh Bread, Cereal, Yoghurt, Fruit, Cofee, Tea, Juice

Boutique Accommodation (Condominium, Pensions, Rental Cottages, Camping Areas)

Annupuri Lodge



Tel: +81-(0)136-58-3280

Location: Annupuri

Type: Lodge

Capacity: 8 western-style rooms

Total capacity: 25

Services: Credit card, internet, transportation by arrangement

Comment: English OK

Sekka Annupuri Lodge



Tel: +81-(0)136-54-2730

Location: Annupuri

Type: Lodge

Capacity: 5 western-style rooms

Total capacity: 12

Services: Credit card, internet, Transportation by arrangement

Comment: English OK

Niseko Side 6



Tel: +81-(0)136-55-5226

Location: Annupuri

Type: Lodge

Capacity: 9 western-style rooms

Total capacity: 32

Services: Internet, transportation by arrangement

Comment: Bunk bed rooms

Small Luxury Lodge Negula



Tel: +81-(0)136-58-2078

Location: Annupuri

Type: Lodge

Capacity: 10 western-style rooms

Total capacity: 20

Services: Credit card, internet, transportation by arrangement

Comment: Free cocktail bar included in room rate, free transportation to local hot springs

Black Diamond Lodge



Tel: +81-(0)136-44-1144

Location: Higashiyama

Type: Lodge

Capacity: western-style rooms

Total capacity: 36

Services: Internet, transportation by arrangement, pets OK

Comment: Restaurant, bar, english OK, outdoor shop, activities

Tabibitoyado Niseko Ambitious



Tel: +81-(0)136-44-3011

Location: Higashiyama

Type: Lodge

Capacity: 4 japanese-style rooms

Total capacity: 18

Services: Internet, transportation by arrangement

Comment: Extensive local knowledge

Comfort Inn Niseko



Tel: +81-(0)136-43-2100

Location: Kondo

Type: Lodge

Capacity: 6 western-style rooms

Total capacity: 10

Services: Internet,

Comment: Disabled access

B & B Niseko Buratto



Tel: +81-(0)136-54-2088

Location: Nishitomi

Type: Lodge

Capacity: 2 western-style rooms,

1 japanese-style room

Total capacity: 10

Services: Internet, transportation by arrangement

Comment: Extensive local knowledge

Niseko Tourist Home



Tel: +81-(0)136-44-2517

Location: Soga

Type: Lodge

Capacity: 5 japanese-style rooms

Total capacity: 15

Services: Internet, transportation by arrangement

Comment: Extensive local knowledge

Yotei View Cottage



Tel: +81-(0)136-59-2822

Location: Fukui

Type: Cottage

Capacity: 1 Cottage

Total capacity: 5

Services: Internet

Comment: Disabled access, extensive local knowledge

Cottage Four Seasons Niseko



Tel: +81-(0)136-44-3662

Location: Higashiyama

Type: Cottage

Capacity: 2 Cottages

Total capacity: 12

Services:

Comment: English OK, bunk bed rooms available

Cottage Bongo Hiroba



Tel: +81-(0)136-44-2098

Location: Higashiyama

Type: Cottage

Capacity: 4 cottages (6 person,

10 person, 4 person)

Total capacity: 37

Services: Internet, transportation by arrangement, pets OK

Comment: Pottery kiln, extensive local knowledge

Boutique Accommodation (Condominium, Pensions, Rental Cottages, Camping Areas)

Annupuri Oasis Lodge



Tel: +81-(0)136-21-2222

Location: Annupuri

Type: Lodge

Capacity: 8 western-style rooms

Total capacity: 24

Services: Credit card, internet, transportation by arrangement

Comment: English OK, bunk bed rooms available

Rental Cottage Natureside



Tel: +81-(0)90-3114-5567

Location: Kondo

Type: Cottage

Capacity: 3 cottages (2 person)

Total capacity: 6

Services: Internet, transportation by arrangement, pets OK

Comment: Pets 1000 yen per night

Niseko Shirokuma Cottage



Tel: +81-(0)136-44-3368

Location: Satomi

Type: Cottage

Capacity: 1 cottage

Total capacity: 4

Services: Pets OK

Comment: Restaurant

Route 66 Niseko



Tel: +81-(0)136-44-1456

Location: Soga

Type: Cottage

Capacity: 3 cottages

Total capacity: 12

Services: Internet, transportation by arrangement, pets OK

Comment:

Mini Cottage Cruising



Tel: +81-(0)50-7546-5454

Location: Soga

Type: Cottage

Capacity: 1 Cottages

Total capacity: 5

Services: transportation by arrangement

Comment:

Rental Cottage Norr



Tel: +81-(0)136-44-2544

Location: Tomikawa

Type: Cottage

Capacity: 1 cottage

Total capacity: 6

Services:

Comment: Disabled access

Niseko Goshiki Onsen Ryokan



Tel: +81-(0)136-58-2707

Location: Goshiki Onsen

Type: Japanese Inn

Capacity: 3 western-style rooms, 7 japanese-style rooms

Total capacity: 40

Services:

Comment: Disabled access, day use hot spring

Goshiki no Sato Niseko Yamanoie



Tel: +81-(0)136-58-2611

Location: Goshiki Onsen

Type: Japanese Inn

Capacity: 27 japanese-style rooms, 4 western-style rooms

Total capacity: 105

Services: Transportation by arrangement, pets OK

Comment: Day use hot spring, restaurant

Koikawa Onsen Ryokan



Tel: +81-(0)136-58-2111

Location: Konbu

Type: Japanese Inn

Capacity: 12 japanese-style

Total capacity: 36

Services: Credit card

Comment: Day use hot spring

Niseko Kurumisou



Tel: +81-(0)136-58-2954

Location: Moiwa

Type: Japanese Inn

Capacity: 11 japanese-style

Total capacity: 35

Services:

Comment:

Minshuku Ogino



Tel: +81-(0)-58-2390

Location: Moiwa

Type: Japanese Inn

Capacity: 9 japanese-style

Total capacity: 30

Services: Transportation by arrangement

Comment:

Niseko Villa and Aroma Raven



Tel: +81-(0)-232-5454

Location: Niseko

Type: Rental Holiday Home

Comment: Exclusive rental

Total Capacity: 6

Services: Aroma Treatment option

Boutique Accommodation (Condominium, Pensions, Rental Cottages, Camping Areas)

Niseko Annupuri Youth Hostel

Tel: +81-(0)136-58-2084

Location: Annupuri

Type: Backpackers

Capacity: 7 western-style rooms

Total capacity: 18

Services: Internet, transportation by arrangement

Tabi Bito no Yado Niseko Guest House

Tel: +81-(0)136-43-2361

Location: Soga

Type: Backpackers

Capacity: 3 bunk rooms, 2 japanese-style rooms, 1 special room

Total capacity: 30

Services: Credit card, internet, transportation by arrangement

Niseko Youth Hostel Karimpani

Tel: +81-(0)136-44-1171

Location: Soga

Type: Backpackers

Capacity: 4 western-style rooms, 2 japanese style rooms

Total capacity: 29

Services: Transportation by arrangement

Comment: Children under 4 free (small charge for linen)

Niseko Yae Jyo

Tel: +81-(0)136-44-2121

Location: Goshiki

Type: Camp area

Niseko Kaze no Tani Camp Area

Tel: +81-(0)136-44-3380

Location: Soga

Type: Camp area



Photo credits

- Yamada Sumiko Niseko Professional photographer
- Simon Ramsey Photographer
- Hokkaido Airports Limited
- China Airlines
- Niseko Village
- Hilton Niseko Village
- Hotel Kanronomori
- Hotel Ikoi no mura
- Coolstar
- Hokkaido Bubu



Niseko Industry and Tourism Department
Hokkaido, Abuta gun, Niseko Cho, Fujimi47
Tel: +81(0)136-44-2121
Fax: +81(0)136-44-3500
Email: kankou@town.niseko.lg.jp