

# FORT RILEY, KANSAS



***Brave, Responsible, and On Point***

***One** for Soldiers*

***One** for Families*

***One** for Civilians*

***One** for our Communities*

***ONE** for the Nation*

**AN ARMY COMMUNITY OF EXCELLENCE**



# ***Pillars of the Division***



## **TRAINING**

### **Vision:**

***"Own the 1 Thing"***  
***Build "Tenacity" with***  
***Multi-Echelon (Multi-***  
***Function) Training and***  
***Self-Development***

### **Focus:**

Movement to Contact  
Master Fundamentals  
Mission Support  
Apply Technical Expertise  
Empower Leaders  
8-Step Training Model  
Continuous Improvement  
Use Simulations

## **MAINTAINING**

### **Vision:**

***"BRO Soldiers are***  
***Complete Soldiers"***  
  
***"BRO Civilians are***  
***Complete Civilians"***

### **Focus:**

Mission  
Fellow Soldiers  
Establish Stability  
Preserve Continuity  
Family and Community  
Comprehensive  
Soldier Fitness  
Comprehensive Fitness  
and Mental Agility

## **MORALE**

### **Vision:**

***Leaders Know***  
***"Why We Serve"***

### **Focus:**

Catch People Doing  
Things Right  
Resiliency  
Mentorship  
Education/Counseling  
Sponsorship  
Be a Source of Counsel

## **DISCIPLINE**

### **Vision:**

***"Good Soldiers***  
***(Employees) Do***  
***What is Right When***  
***No One is Looking"***

### **Focus:**

Secure Yourself First  
Personal Responsibility  
Accountability  
Use Resources Wisely  
Knowledge Management  
Safeguard Resources  
Share Best Practices

# **TEAMWORK**



1

# FORT RILEY, KANSAS

## Home of the 1st Infantry Division



Established 1853

## HOME OF THE 1ST INFANTRY DIVISION

### THE BIG RED ONE

- 1 A five-brigade installation
  - 1 A mix of Armor, Infantry, Aviation and Combat Support capabilities
  - 1 Oversight of units at Ft. Knox, Ft. Sill, and Ft. Leonard Wood
- 1 Soldier and Family populations have nearly doubled since 2005
  - 1 ~ 18,000 Soldiers
  - 1 ~ 24,000 Family members
  - 1 ~ 7,100 Civilian workers
- 1 Children in on- and off-post schools now number approximately 8,300
- 1 The greater Ft. Riley population is ~53,000
  - 1 Military, Family members, Retirees, civilian employees, and contractors



Established 1853

## OVERVIEW

- 1 A Division that is trained and ready
- 1 An adaptive and responsive installation
- 1 State of the Art training and simulation facilities
- 1 Regional partnerships to support training
- 1 Rapid deployment capabilities
- 1 Easy access from Fort Riley to regional transportation hubs
- 1 Available acreage with negligible encroachment
- 1 Minor troop level reductions due to Brigade Realignment and declining deployments



1

# FORT RILEY, KANSAS

## Home of the 1st Infantry Division

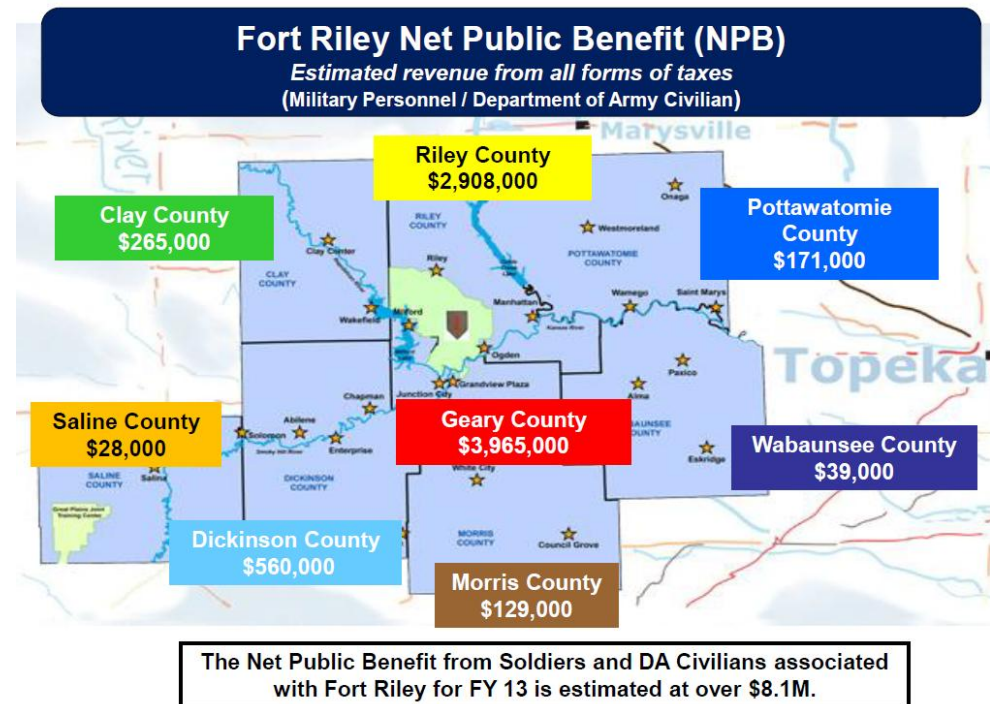


Established 1853

## FORT RILEY'S ECONOMIC IMPACT ON THE CENTRAL FLINT HILLS REGION

**TOTAL DIRECT ECONOMIC IMPACT IN FISCAL YEAR 2013 WAS \$1,774,983,615**

- 1 \$1.25 Billion in Payroll
- 1 \$251.7 Million in Supplies, Services and Contracts
- 1 \$153.5 Million in Construction
- 1 \$60.9 Million in Outsourced Patient Care (Medical and Dental)
- 1 \$13.9 Million in Federal Impact Aid to Schools





# FORT RILEY, KANSAS

## Home of the 1st Infantry Division



Established 1853

## INFRASTRUCTURE INTEGRITY

\$1.7 Billion in military construction since 2005

- Brigade and Battalion headquarters, Company Operations Facilities, Barracks
- New or upgraded ranges and training facilities
- Soldier and Family facilities

### Housing

- 1,715 new homes constructed
- 1,299 homes renovated
- 402 homes remaining to be built to reach the 3,827 final inventory

### Hospital

- Occupancy in 2014
- 68 beds, 2 obstetrics operating rooms, 7 oral surgery rooms
- New MRI, sleep lab, and inpatient behavioral health capability

### Schools

- New Elementary School open
- New Middle School under construction, open for 2014-15 school year
- Additional Elementary School approved for construction





Established 1853

## QUALITY SCHOOLS....ON AND OFF-POST

- 1 Fort Riley Middle School named National Middle School of the Year 2012-2013
- 1 National Blue Ribbon Schools (since 1982)
  - 1 16 Area schools in surrounding 8 Counties
  - 1 20 Awards
  - 1 4 Awards to on-post schools
- 1 Other School Awards
  - 1 USD 475 Junction City/ Geary County earned 26 Governor's Achievement Awards (2006-12)
  - 1 Over \$1 Million dollars awarded in scholarships in FY13 by area schools
  - 1 USD 473 Chapman has Nationally recognized music, FFA and business programs
- 1 Fort Riley Units sponsor area schools and provide support to school events





Established 1853

## MODERNIZATION AND MOBILIZATION

### 1 The Army's most modern Division

1 M1A2 System Enhancement Program (SEP) Tank

1 Bradley Fighting Vehicle M2A3

1 Helicopters

1 CH-47 Chinook (F-model)

1 AH-64 Apache (D-model)

1 UH-60 (L/M-model)

1 Unmanned Aviation Systems

1 MQ-1 Gray Eagle

1 RQ-11 Raven

1 RQ-7 Shadow

### 1 State of the Art Deployment Capability

1 Lighted rail yard with loading docks, scales, and control tower

1 Two on-site locomotives with crew, 400 rail car throughput

1 Capable of moving a Brigade-sized element in 1.5 days







Established 1853

## TRAINING LAND RESOURCES

### 1 Training Land with Negligible Constraints

- 1 101,733 total acres
- 1 72,653 Heavy (Armor) and 3,845 Light maneuver areas
- 1 76,498 Total maneuver area contiguous to cantonment area



### 1 Armored and Infantry Brigades train simultaneously in non-contiguous configuration

- 1 Brigade-level training in contiguous configuration
- 1 8+ Battalions simultaneously (non-contiguous)
- 1 Brigade vs Battalion Force-on-Force



### 1 New and modernized ranges and training facilities

- 1 25 Ranges; 2 inactive and available for new missions
- 1 Live fire village, 2 live fire shoothouses, 2 team live fire courses
- 1 Urban Clusters, Afghan Village, Mock Airfield





Established 1853

## SIMULATIONS CAPABILITIES

- 1 State of the Art Simulations, Trainers, and Gaming
  - 1 1 of 27 Regional Collective Training Capabilities in Army
  - 1 Linked to Ft. Leavenworth, Smoky Hill, and Ft. Sill
  - 1 Aviation trainers/simulators for Longbow and Blackhawk, as well as Combined Arms Tactics and Flight Proficiency
  - 1 Ground vehicle trainers/simulators for Convoy Operations and HMMV and MRAP rollover egress
  - 1 Soldier skill training/simulators: Close Combat Tactics, Warrior Skills, Engagement Skills, Visual Clearance, Dismounted Tactics, Call for Fire, and Medical Teams
  - 1 Air Traffic Control Tower simulator
  - 1 Fully integrated with Live Training Capabilities



# FORT RILEY, KANSAS

## Home of the 1st Infantry Division



Established 1853

## JOINT AND REGIONAL TRAINING

### 1 A training platform for others

- 1 23,000+ Reserve, National Guard, Air Force, Navy and Marine Service Members, ROTC Cadets, other Nation Military, Local and Regional Law Enforcement partners train annually
- 1 Designated as one of 27 Regional Collective Training Capabilities (RCTCs) in Army

### 1 Utilize the Great Plains Joint Training Center as additional training area

- 1 Kansas National Guard Facility used under Memorandum of Understanding with the Kansas Adjutant General
- 1 Provides 30,000+ acres for Maneuver and Joint Training
- 1 Opportunities for Distributed Training away from Fort Riley
- 1 Approximately 65 miles away, over 50 miles via Interstate 70 or Interstate 35



***Our simulations capabilities, coupled with access to the GPJTC, make us much larger than our land footprint***





Established 1853

## ENERGY CONSERVATION

- 1 Selected as a Net Zero Water Pilot Installation
  - 1 Partnered with EPA on Net Zero Water projects
  - 1 Native prairie areas save millions of gallons of water per year
- 1 Low Energy Cost
  - 1 Cost per kilowatt hour is below U.S. Army average
  - 1 Low energy cost per building square footage
- 1 29 LEED Certified buildings
  - 1 LEED = Leadership in Energy and Environmental Design
  - 1 Numerous other buildings constructed to LEED or similar standards
- 1 Evaluating potential Third-Party Financing opportunities for energy monitoring and waste water management
- 1 Exploring Public-Private Ventures

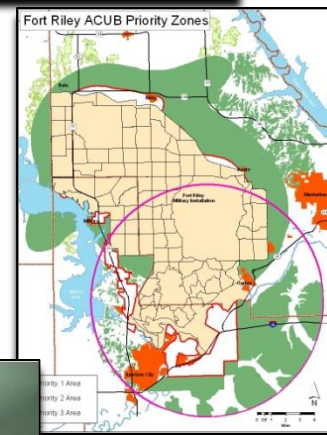




Established 1853

## ENCROACHMENT

- 1 No significant encroachment issues
- 1 Programs and processes are in place to prevent encroachment
  - 1 Army Compatible Use Buffer (ACUB) Program provides funding to purchase Conservation Easements
  - 1 Approximately 12,000 acres now under easements
  - 1 Communication and cooperation with local communities and state officials codified through Kansas Statute (12 KSA 772-775)
  - 1 Excellent land management programs on post protect endangered and at-risk species
  - 1 No impacts to training due to endangered or threatened species
- 1 Continued cooperation will be necessary



# FORT RILEY, KANSAS

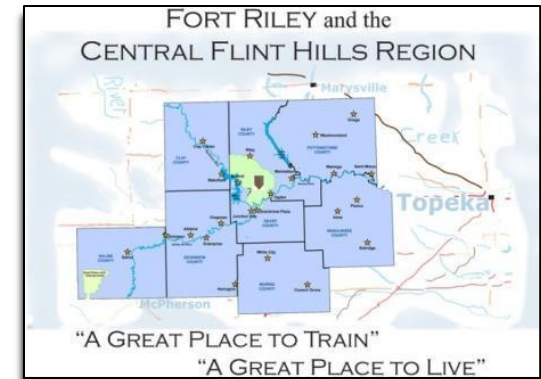
## Home of the 1st Infantry Division



Established 1853

## PARTNERSHIPS

- 1 Tied closely to our local communities
  - 1 Military Affairs Committees
  - 1 Flint Hills Regional Council
  - 1 Numerous Soldier and Family Services
- 1 Intergovernmental Support Partnerships
  - 1 Shared equipment and shared training partnerships underway
  - 1 Developing traffic signal, street striping and bulk purchase agreements
  - 1 Evaluating a Regional Recycling program
- 1 Nested with Kansas State University
  - 1 Regarded as a leader in Military-friendly universities
  - 1 Kansas State Research and Extension for Family and Youth programs
  - 1 Institute for the Health and Security of Military Families







Established 1853

## TAKE AWAYS

1 Modernized, State of the Art training capability to enable the Warfighter

1 Facilities in place to meet the Army's current and future needs

1 Adapting sustainability initiatives to meet tomorrow's challenges

1 Negligible encroachment challenges along the installation's borders

1 Nested closely with local communities and state organizations

1 Postured to adapt to changing environments

1 Continuously exploring partnerships to enhance services





THE **BIG RED ONE**

**BRAVE  
RESPONSIBLE  
ON POINT**

