

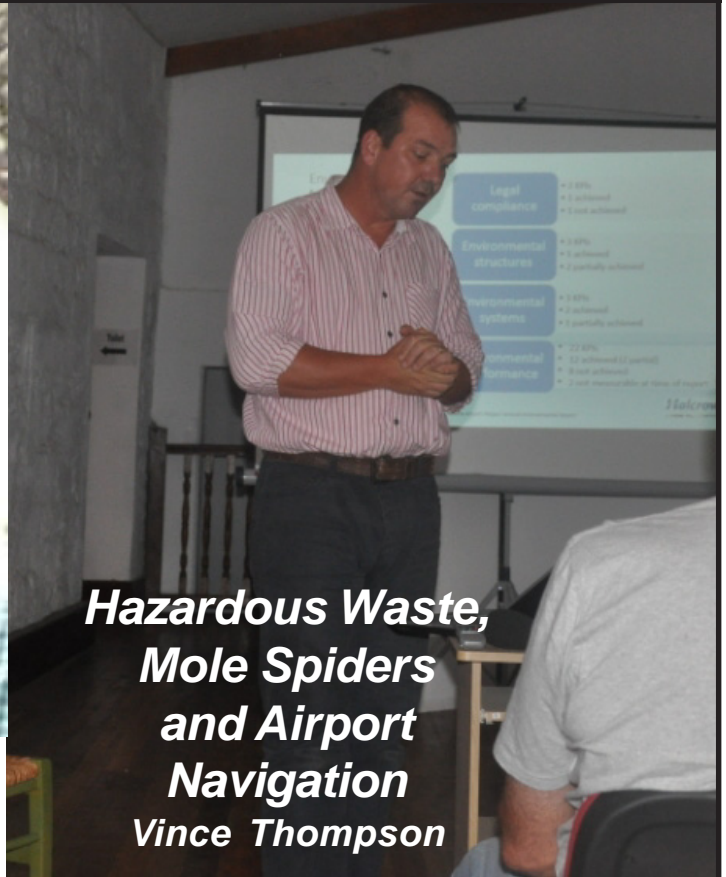
THE ST HELENA Est. 2005 INDEPENDENT

VOLUME IX ISSUE 22, 9th MAY 2014, PRICE 90p

An independent newspaper in association with Saint FM and St Helena Online



There is a Connection



*Hazardous Waste,
Mole Spiders
and Airport
Navigation*
Vince Thompson



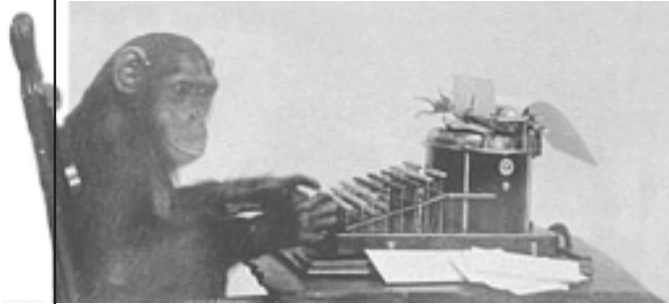
*New Horizons v.
Basil Read*



*Fishermen
Wanted*



Tickets cost £5.00 each



Tel: [+290] 22327
Email: independent@helanta.co.sh
http: www.saint.fm

Editorial

I just have two small remarks this week. Firstly, it might appear that we are giving a lot of coverage to Atlantic Star Airline. I know nothing about aviation or if Atlantic Star has got the right ideas or if they are completely wrong. We have to leave that to the experts, in this case Avia Solutions. What I personally like that the people involved are showing such enthusiasm and spirit in what they are doing. This is something we need to do here on the Island as well. It is also why I highly and support Trevor 'Otto' Thomas. He truly believes in what he is doing. I cannot judge if he is right or wrong, but I can support the spirit and aspiration to go forward. If anybody has any ideas how we can get more of that spirit, please come forward.

Secondly, I am trying to sort out a problem with Court reporting. I have no problem saying that I yesterday was sentenced to nine weeks imprisonment, suspended for two weeks, for not complying with a notice from the tax office. I have no problem in saying that Mr Derek Richards had an immediate prison sentence of just over a year after pleading guilty to various charges. The problem I have is to treat everybody equally. I started in media in year 2000 and in the early days I actually had time to follow the Court proceedings every Thursday and report on them fairly (at least I hope so) every Friday. Nowadays, I simply do not have the time to do it. Therefore, we have decided to strictly report Court news as issued from the Court itself, which will be late. We make exception for Supreme Court.

To me, St Helena is slightly different to most of the outside world, where some people are known and therefore make headlines if they go to Court. Here on St Helena "Joe Bloggs" is as well known as the Governor (no offence). The equality is even more important. I have tried to come up with a fair way of doing it for 14 years, but so far I have failed to find the right way of doing it.

Mike



Julian has got computer problems. That is why you have not seen him in the columns for a few weeks. However, to lighten up your day, here are a few of his jokes - Hope they are not too controversial.

The pygmy in the last joke is not in any way mentioned in a derogatory way.

Mike

Just imagine a day when a Saint has her first trip on an aeroplane. She was sitting next to a very talkative American who asks if she would like to play a fun game? She was tired and wants to take a nap and politely declines.

The American persists and explains that the game is easy and a lot of fun.

He explains, "I ask you a question, and if you don't know the answer, you pay me and vice versa." Again, she declines and tries to get some sleep. The American, now agitated, says, "Okay, if you don't know the answer you pay me \$5.00, and if I don't know the answer, I will pay you \$500.00." This catches her attention and, figuring there will be no end to this torment unless she plays, she nods agreeing to play. The American asks the first question :

"What's the distance from the earth to the moon?" Without saying anything she reaches into her purse, pulls out a \$5.00 bill and hands it to the American.

"Okay" says the American, your turn. She asks the American, "What goes up a hill with three legs and comes down with four legs?" The American, puzzled, takes out his laptop computer and searches all his references, no answer. He taps into the air phone with his modem and searches the net and the library of congress, no answer. Frustrated, he sends e-mails to all his friends and co-workers, to no avail. After an hour, he wakes her up and silently hands her \$500.00. The Asian says, "Thank you !" and turns back to get some more sleep. The American, who is more than a little miffed, asks: "Well, what's the answer?" Without a word, the our good lady reaches into her purse, hands the American \$5.00, and goes back to sleep.

A Hunter walking through the jungle found a huge dead elephant with a pigmy standing beside it. Amazed, he asked: "Did you kill that?" The pigmysaid, "Yes."

The hunter asked, "How could a little bloke like you kill a huge beast like that?" "I killed it with my club." The astonished hunter asked, "How big is your club?"

The pigmy replied, "There's about 60 of us."

'Hello Sunday morning'
Christian music show with
Tammy and Katie Williams
This coming Sunday **'kid's special'**
Join us from 7.30am - 9.30am



God Rocks!



St Helena Magistrates' Court

1ST MAY 2014

PATRICIA ANN WILLIAMS (46) of New Ground pleaded guilty to driving a motor vehicle while 35% over the prescribed limit. As Miss Williams had no previous convictions she was fined £90.00 with costs of £15.00 and disqualified for the minimum period of 12 months.



There is a Connection



We have heard that the construction of the airport is progressing well. What we hear less about is the air service provider who possibly will fly to the airport. On Wednesday night, we talked to Andrew Radford, Director of Atlantic Star Airlines, who said that

“we are involved obviously in the air access tender process, which is currently at a slightly low phase. There’s been a big report, as you’re no doubt aware, written by Avia Solutions, to advise DFID on how to take the process forward. They’ve concluded their report and presented it to DFID who are now mulling over the options and discussing some of the content with Avia Solutions just to get some clarity. We’re expecting a response from DFID at the end of this month, we had hoped a little bit earlier, but I’m sure they are working very hard on it. It really is, yes, quite important that we do keep things moving, but we’re just waiting on that decision. That decision itself is likely to contain the specifications for route structure that DFID will require from any air access provider, meaning whether it is likely to be a European link, whether it would be solely a South African link or whether there could be another permutation that they show a preference for.”

“The core of the Atlantic Star proposal and from our understanding it is going to provide, we think, the best solution to meet the needs of Saints and of tourists and of other island investors. Cape Town or Johannesburg will undoubtedly be a source of some traffic, but we certainly see the most interest in terms of tourist visitors and Saints accessing the parts of the world where their relatives live or the parts of the world they perhaps want to visit, although Europe certainly provides the best shot for that.

When it comes to stopover “our preference still remains for

Madrid, however, there are other options available to us, either North Africa, perhaps Marrakesh or West Africa in maybe Ghana or any West African state would most likely be Accra in Ghana, the options are still open, as we say, our preference is still for a Southern European routeing but in terms of the possibilities and the actual aeroplane that we settle on, it may well be a fuel stop elsewhere.”

“Our understanding is that it will be available to us although that’s yet to be decided. More interesting really, from our point of view, is Ascension is an actual destination in its own right. We thoroughly intend to operate services from St Helena to Ascension, whether they will be fortnightly or monthly will be a matter of assessment of the demand really, but we do really want to operate there, we recognise that it is quite an important gateway for Saints, particularly either working on the island itself or getting down to the Falklands.

About the regarding the recent discussions between Atlantic Star Airline and Icelandair Andrew said that: “ It is quite a lot of it is ‘sort of’ private business negotiations so I can’t give too many details away, but we are in in-depth negotiation with Loftleidir and Icelandair over operating, they’re operating, in fact, the initial transport services we’d probably have a year or eighteen month agreement with Icelandair whereby they would actually use their aircraft, possibly their crews, maybe our crews, to operate the European services and, indeed, the South African services if they are required and after that eighteen month period we would anticipate moving operations across to an entirely Atlantic Star leased aeroplane using entirely Atlantic Star pilots and we would very much like to think St Helenian cabin crew.

In the longer term, “we will be looking to probably move to a more frequent service with a 319 which is a smaller aeroplane than a 757, it suffers from not being able to carry quite as many passengers and particularly not quite as much cargo as a 757, but once the route is matured and we are operating a number of services per week then we would anticipate being able to transition to an A319 Neo probably increase the frequencies further and manage to transport roughly the same number of people and the same amount of cargo, but over a slightly higher frequency of services.”

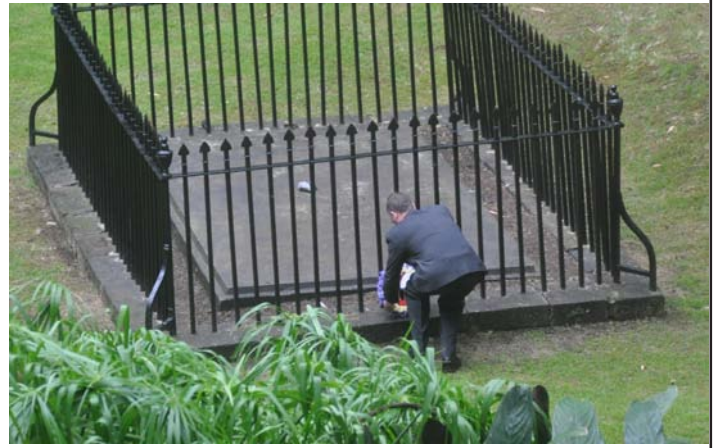
Andrew also said that “freight, certainly in terms of the provision of the island’s needs very much so. As you are aware, when the RMS ceases, unfortunately ceases operation in, not too long after the airport opens, there will be a requirement for quite a considerable amount of freight and I know that discussions are underway to ensure that the heavier goods are provided on a dependable basis, but we will certainly want and will be able to import a large quantity of goods at short notice and perishables and so forth. In terms of freight out of the island, now that’s, of course, a matter really for the St Helena economy to address, but we are certainly making provision for fish exports and would like to think coffee as well and perhaps even Tungi’s might catch up”.



Moment de Memoire – 5th May 1821 - Vince Thompson

The 193rd anniversary of Napoleon's death was commemorated on Monday in both France and St Helena. In France the commemoration took place at les Invalides in Paris, in St Helena it was at Napoleon's Tomb. Les Invalides is a large and impressive complex of buildings which includes a church, a retirement home for war veterans, a hospital and an army museum. It is also the final resting place for many French military commanders, including the emperor Napoleon.

In St Helena, Father Dale led the service of commemoration with the 1st Jamestown Scout Group sounding the Last Post just before a minute's silence and then sounding Reveille afterwards. Michel Dancoisne-Martineau represented the French Government and laid a wreath on their behalf, Acting Governor, Sean Burns, laid a wreath on behalf of St Helena. Wreaths were also laid on behalf of la Fondation Napoleon by Susan O'Bey and by a student from Prince Andrew School. A group of PAS students attended, representing St Helena's youth, and future. Thomas Hickling spoke during the ceremony, on behalf of the students. In excellent French, he said, 'On behalf of the students of Prince Andrew's School we pay tribute to the emperor Napoleon'. The commemoration concluded with a blessing given by Father Dale. About 50 people watched the ceremony from the observation point overlooking the tomb.



The Honorary Consul laying a Wreath



Some of the people watching from the Observation Point



Napoleon's Tomb – les Invalides



Les Invalides - Paris

Nice Gesture in London - Well Done Tristan

House of Commons

Early day motion

TRISTAN DA CUNHA SUPPORT FOR PHILIPPINES TYPHOON APPEAL

Primary sponsor: Rosindell, Andrew

That this House applauds the generosity, humanity and enterprise of the people of the world's most remote inhabited island, the British Overseas Territory of Tristan da Cunha in the South Atlantic, for raising £3,456 for the Philippines Typhoon Appeal, representing the sum of £13 for each of the 264 residents, raised from events which included a spon-

sored swim by Tristan children in the island pool, equivalent to a collective round-the-island swim of 20 miles; notes that all monies have been paid to the UK Disasters Emergency Committee; and recognises that this selfless act comes as the islanders celebrate the 50th anniversary of their return from exile following the volcanic eruption of 1961, and their recent sheltering in their homes of the Filipino crew rescued from the bulk carrier Oliva, wrecked on one of the Tristan islands.

Note:

Early day motions (EDMs) are tabled by MPs to publicise a particular event or cause, and to gather support among MPs for that event or cause. Very few are actually de-

Press Release 5th May 2014 - Characters of Jamestown

**Which living person do you most admire?
On what occasions do you lie?
What is in your refrigerator right now?**

Last Thursday *Jamestown Public Library*, working with newly registered arts charity *Creative Saint Helena* held a very successful event for young people called *Characters of Jamestown*. The young people spent the morning in the library discussing their favourite characters from books and films with library staff, parents and project volunteers. Discussing what we know about these characters and the types of questions we ask to find out about characters in books, the group then discussed the real characters in our lives, the policemen, the councillors, the fisherman, the shopkeepers, the parent. In groups of three, along with a project volunteer, young people went around Jamestown interviewing the *characters* that live in Saint Helena.

The aim of the project was to encourage and develop young people's curiosity and interest in characters, in stories and in our town. *Characters of Jamestown* was a process of live-action cultural research where young people take control of documenting our own culture.

The *Public Library* and *Creative Saint Helena* were delighted with the amount of young people who came along and enjoyed getting involved. Participants interviewed members of the public, the police, radio presenters on air in both Sams radio and Saint FM, the councillors office, the tourist office, Warrens, Solomon's, the Courthouse, Customs, The Market and many more.

The group then returned to the library and discussed the interviews and the answers which people shared. What did we find out about the *Characters of Jamestown*? Some of these answers are on display in the library this week, it is also possible to read transcripts of all of the interviews in the library.

We would like to thank everyone who came and participated, helped on the day and allowed themselves to be interviewed. It could not have been such an enjoyable and successful day without everyone's enthusiasm and co operation.



Sun Shines on Harford for May Day Fete

Submitted by Harford Primary PTA

Last Saturday saw the crowds gather in Longwood for the Harford Community May Day Fete. The day proved to be a roaring success as shown by the field of smiling faces and over £2,000 raised for PTA funds. The school and the PTA would like to say thank you to everyone who came along and supported the day- we hope you enjoyed it!

The hard work of the staff, parents and friends of Harford Primary School came together in a successful fun day for the whole community to enjoy. In addition to sponsorship and donations by businesses we rely on the goodwill and support of many individuals and we extend a sincere "Thank-you" to everyone who put in the effort to make the day come together. We look forward to repeating the event in the future.

May Kings and Queens - 2014

Little Miss May Queen – Bobbi Clingham, yr 1 Harford Primary

Little Mr May King – Kyle Williams, reception, St Paul's Primary

Miss May Queen – Ashlie Thomas, yr 4 St Paul's Primary

Mr May King – Thomas Minal, yr3, Harford Primary

Thank you to our Sponsors

Anne's Place – Art & Crafts Centre – Basil Read - Bliss Hair Salon - Consulate Hotel – Essence Beauty Salon – Foxy's Motors – Get Carter's – G-Unique – Independent Newspaper – Inkwell Books – Kellet's Cakes – Paulie Andrews – RMS St Helena – Reggie's Takeaway – Rose and Crown - Solomon's - South Atlantic Media Services – Sparkles Jewellery - Stevens Butchery - Sunflower Café – the many friends and family who donated goods, cakes, time, effort and support. THANK-YOU everyone.

QUEEN'S GARDEN PARTY

On Saturday 26 April 2014, a Garden Party was held at Plantation House to mark the birthday of Her Majesty the Queen. The weather held out, and with good organisation of the event by Debbie Stroud many mingled and enjoyed the day which included a mixture of St Helenian society; Prince Andrew School Students, Girl Guides, Boy Scouts, private sector individuals, retired public servants, SHG Officials and Councillors attended - with many individuals having their medals on display.

HE Governor Mark Capes, called the gathering to order by blowing the 'Bosun's whistle', presented to him by the Captain of the French Frigate 'La Fayette' on 15 April.

In addition to recognising the commitment and service of Her Majesty the Queen, the Governor also acknowledged individuals on the Island for their dedication and service to the community. The Queen's Certificate was awarded to Mr Lionel Lawrence, whose working career commenced in 1949 when, at the age of 15 years, he was employed as an apprentice in the Agriculture and Forestry Department. Lionel retired in 1991 having served the Department for a total of 42 years.

The second award for the Queen's Certificate of Honour went to the late Mrs Shirley Anderson-Leo, who worked for 40 years as a registered general nurse and midwife.

The achievements of those returning from study were also

commended. Ricardo Fowler, April Lawrence, Nikita Crowie and Tara Thomas, who have recently returned from the United Kingdom, were all recognised for their achievements.

Also mentioned were Robyn Sim, who will shortly be leaving St Helena on a three year teacher training course at the University of Hertfordshire and Matt Joshua, who will be taking up a place on a three year Diploma in Hotel Management at the International Hotel School in Cape Town.

The Governor highlighted these individuals as examples of those who choose to better themselves to improve the Island's skill base, vital for the future prosperity of St Helena.

SHG

28 April 2014



Left to Right: Giselle Richards, Lauren Evans, Tara Thomas



Left to Right: Ricardo Fowler, Chelsea Young



Left to Right: Merlin George and Trevor Botting



ST. HELENA POLICE SERVICE

The main reports of concern for the period Monday 28th April to 4th May are as follows –

One male person was arrested for failing to comply with the notification requirement under the Sexual Offences Act, 2003 and detained where he was charged with the offence and bailed to Court last Friday. The case was adjourned for a further two weeks.

As a result of a domestic violence incident in Longwood, one male person was arrested on suspicion of assault and was later suitably dealt with for common assault.

Officers on duty in Longwood arrested one male person for being found drunk in a public place and resisting a Police Officer. He was detained in custody and subsequently charged with the offences and bailed to appear before the Court in due course.

Police are currently investigating a report of a person driving a motor vehicle on a road without a valid drivers' license.

A minor damage only road traffic collision occurred in Jamestown involving two vehicles. The driver at fault was suitably dealt with for driving without due care and attention.

Two persons were suitably dealt with for being in possession of a firearm without a valid certificate.

Have a safe week.

**Detective Sergeant Keith Pritchard
Criminal Investigations Department
St. Helena Police Directorate**

5 May 2014

MV Extractor Update

Since the last update three members of the delivery crew have been working steadily completing a number of tasks in preparation for the first offshore fishing trip. Most of the equipment used for this has been brought down from Hout Bay with the vessel to eliminate higher local costs.

- 1) The fish containment pond boards have been installed on the main work deck
- 2) The heavy lifts hoisting winch has been fitted
- 3) Aft fish hoist gantry has been constructed
- 4) Live bait tank and all plumbing completed
- 5) Tuna Water sprays installed and tested
- 6) Several deck wash feeds have been installed
- 7) Deep water grapnel anchors (to be) constructed and running gear prepared
- 8) All fish holding tanks and freezer room painted and sanitised
- 9) Outboard flotation live bait cage under construction
- 10) Preparation of fishing gears commenced
- 11) Deep sea rod holders sited
- 12) Main engine serviced
- 13) Generator serviced

The vessel will conduct a series of deep water anchoring trials before heading offshore mainly to test the weight and size of grapnel anchors and the holding capacity in adverse weather conditions. Further trials will also involve bringing the vessel close inshore to test the best station points to take on ice supplies, water and fuel bunkers. A decision will have to be made whether to use Rupert's or James Bay for this. As previously stated there will be restraints when the sea is rough in the Steps or the Sheers and an alternative explored to take on the requirements needed before each offshore fishing trip. The crew will start to catch and store bait over the next few days and we appeal to our local fishermen to hold on to any surplus bait which they can pass onto Argos Cold Store to help us supplement our frozen stocks.

We are currently advertising for expressions of interest to attract local crew to join the 3 members of the delivery crew who has opted to stay with this offshore fisheries development project after returning from South Africa. We wish to point out at this stage that the vessel's total sleeping capacity and health and safety manning certificate caters for total 9 persons only. It is intended that a slot or two is to be reserved for on board for youth training as and when applicable; also it is expected to carry a scientific officer between times. The

THANKS,

Dorita Fowler, Children, Grandchildren, & Great Grandchildren,
Would like to extend sincere thanks to Doctor Solomon, & the Nursing Staff, for the Kind care & attention given to her during her stay in hospital, & to the friends that visited her.
May god bless you all.



actual number of additional crew hired will be at the discretion of the skipper and mate (deck boss) and may not be determined by past or existing fishing experience only. **The vessel meets stringent SAMSA regulations and requirements and potential crews are advised that a strict code of practise shall be followed at all times.**

It may be prudent to point out at this point that the vessel's owners, Saint Marine Resources Ltd has invested a tidy sum in the procurement of the boat and are therefore expected to make a full cost recovery over time. A number of operating expenses/catch share models is being investigated and due to higher operating costs, asimilar operating share systems as currently practised with the inshore fleet cannot be entertained to run the project. Potential crew members will have an opportunity to discuss certain details involving the gross operating surplus share models.

Trevor Thomas
Skipper MV Extractor



To ask Her Majesty's Government what effect they expect that the recently announced St Helena hotel investment initiative by a British consortium will have on the Tourism Economic Development Plan of the St Helena Government.

Lord Bates (Con): The UK Government expects tourism to be a driver of growth on St Helena once the airport opens in 2016. Any hotel investment which improves the quality and quantity of visitor accommodation is expected to have a positive impact on tourism and, over time, on St Helena's economic development.

Expressions of Interest – Business Support Service Providers

With construction of the airport now well underway, Enterprise St Helena is seeing increased activity within the local business community and also interest from new parties who wish to take advantage of the opportunities that the airport will bring.

This interest is fairly wide, covering most sectors, in particular Tourism & Hospitality (Food, Accommodation, and Tours / Experiences), Agricultural Production, Fisheries Development, and Construction.

These business interests are increasingly looking for independent advice and technical support in areas such as:

- Accountancy / Book-keeping Services
- Generating and/or scrutinising Business Plans
- Investment appraisal, Service/product costing, Breakeven analysis
- Financial Forecasting / Cash Flow Forecasts / Profit Improvement Programmes
- Sales & Marketing Plans
- Company formation / Partnership Agreements / Commercial Contracting
- Project Management / Supply Chain Management
- Branding / Graphic Design / Website Development / IT Services
- Building Design Services (Site Surveys / Plans / Concept Drawings / Project Programmes / Cost Build-ups)
- Planning Application Requirements (e.g. Environmental Impact Assessments)
- Employment Policy / Human Resources / Payroll

Enterprise St Helena would like to hear from qualified / experienced individuals, who would be interested in offering such services either on a full time or part time basis, in order that a cadre of local contacts may be provided to parties seeking such support. We also anticipate that further professional support and training may be available to assist interested parties in some of these areas, should this be necessary.

For an informal discussion, or for further information, interested parties are asked to contact ESH's Director of Enterprise in the first instance, via either Robert.midwinter@esh.co.sh or on telephone number 00 290 22920.

Please note that the provision of certain business support services are regulated in St Helena; such as the provision of business planning and financial advisory services, which are regulated activities under the Financial Services Ordinance, and therefore require registration with the Financial Services Regulatory Authority.



A sub-tropical island of spectacular and beautiful landscapes in the South Atlantic with a warm and friendly population of circa 4,200, St Helena is a self-governing overseas territory of the UK, poised with transformation with the escalation to airport opening in early 2016.

Business Advisory Service

**St Helena, South Atlantic – 1 year contract
(renewable)**

We wish to partner under a contract of service with a professional individual, preferably from a leading professional network, to provide specialist Business Advisory Services independent of Enterprise St. Helena to on-island new and existing businesses. The service provision is to include business advice, planning and training that will aid business start-up, diversification and/or expansion, overall profitability, and commercial effectiveness.

This is a rewarding hands-on role which will require analytical and operational review and provide practical, constructive advice and business planning and training, together with recommendations for improvement.

The Business Advisory Service provider must be a qualified chartered accountant with a minimum of 3 years' advisory service experience, who understands the challenges and mind-set of SMEs.

The provider will help local entrepreneurs identify opportunities, formulate strategies and secure finance while offering a full range of advisory support, including training and knowledge transfer to a local pool of service providers to ensure that competency levels enable them to be proficient in providing sound business advice and planning to the private sector.

Formal applications should be submitted to ESH in the form of a Business Proposal inclusive of details of the service provision and annual fee. Closing date for applications is 1200 hours GMT on Monday 26th May 2014. For a copy of the Terms of Reference for this role please contact Mrs Natasha Bargo, Administration Manager, Enterprise St. Helena, ESH Business Park, Ladder Hill or email natasha.bargo@esh.co.sh or telephone +290 22920

Please note that the provision of certain business support services are regulated in St Helena; such as the provision of business planning and financial advisory services, which are regulated activities under the Financial Services Ordinance, and therefore require registration with the Financial Services Regulatory Authority.



MAY'S NIGHT SKY - Stedson George

Having spent six weeks of glorious weather in Cape Town, I wondered why Edmond Halley stayed here on St Helena instead of going on to the Cape as William Herschel did some years later. But last week proved just how fantastic our night sky can be. What a fabulous sunset we had on Wednesday evening when the day-old New Moon appeared soon after, followed by the appearance of Jupiter in the west and Mars in the East.

So let's begin our tour of May's night sky. The Pleiades (Seven Sisters) and the Hyades star clusters in Taurus, the Bull hang low in the West as twilight fades. To their left you'll see Orion, the Hunter's familiar form starting to slip towards the horizon. Continue looking to the left and you can't miss the sky's brightest star Sirius, the Dog Star twinkling like crazy as it's light passes through the thick layer of atmosphere near the horizon. Mercury will join the evening scene later this week, when it passes just a bit south of the Seven Sisters.

You can't miss brilliant Jupiter nesting in Gemini, the Twins, just to the left of Castor and Pollex, that constellation's brightest stars. After viewing brilliant Jupiter, shift your gaze to the east (right) where you'll see the Beehive star cluster in Cancer, the Crab. Further east is Leo, the Lion. To the right of Leo, Mars shines brightly among the background stars of Virgo, the Virgin. The Red Planet reached opposition (opposite the Sun from earth) in April, when we caught up with him traveling in a slower orbit than Earth. So he was closest to us and at his brightest, but he is still impressive during May.



The Pleiades (Seven Sisters)

As the night progresses, Saturn appears in the East just ahead of Scorpius, the Scorpion. Saturn lies among the background stars of Libra, the Scales, one constellation east of Mars' current home in Virgo. The Ringed Planet reaches opposition on May 10th, when it lies opposite the Sun in our sky. Opposition brings Saturn closest to Earth so it shines brightest for the year.

Looking due north, the Plough sits just above the horizon. Follow the curve of it's handle and you will come to a bright orange star below Mars. This is Arcturus, in Bootes, the Kite. To the left of Arcturus is the beautiful star cluster Coma Berenices.

Turning to the south, the Southern Cross is high up as twilight fades. Look for the

Coal Sack and the Jewel Box at the bottom of Crux. To the left of Crux, Omega Centauri, the most spectacular globular cluster in the sky can be seen. Globular clusters are on the outskirts of our galaxy.

To the right of Crux, look for the famous Eta Carina nebula. Further to the right the Large Magellanic Cloud with it's bright Tarantular Nebula can be seen lying some 160,000 light years away (a light year is the distance light travels at 186,000 miles per second in one year – some six trillion miles). It's looks like a white cloud against the black background sky and is only visible from the southern hemisphere.

Look around the vicinity of Crux and you'll see some of the best star clusters and nebulae in the Sky. May is a great month for star gazing, so instead of staying in doors watching television, go out side and look up. You'll be amazed by the beauty of the night sky. You may even see the International Space Station passing over-head, or the Hubble Space Station or even an Iridium Flare. And of course there are sporadic meteors. You might even see a fire ball or a bolide or catch a 'falling star'.

Until next month, clear skies, and keeping looking up.



Hubble Space Station

Your Opinion Counts

Dear Editor,

I am writing as a result of and not in response to the letter in the Independent of 2 May 2014 from Mr Williams. As the Head of the Police Directorate I have responsibility for, amongst other functions, policing, the safeguarding of children and vulnerable people, HM Prison and Offender management. Whilst it would not be appropriate to comment on any individual case here, I felt it important to reinforce how committed my team and I are - working with colleagues from Social Care, Education, voluntary organisations and others - to protecting the children and other vulnerable people on St Helena. In terms of the offenders of such crimes, our work is focused in three key areas - investigations, rehabilitation and monitoring & support.

Before I set out how we deal with investigations and offenders, I want to focus on our absolute priority - the victims of sexually motivated crimes. Such crimes can emotionally scar victims for life and it is often within small communities that victims can find it especially difficult to report such crimes. It is more likely that the perpetrator will be known to or related to the victim, or crimes may go unreported through embarrassment or fear. The victims who have come forward recently on St Helena have demonstrated great courage and resilience in reporting the crimes that have affected them. I have a team of Officers who are trained and experienced in investigating offences against children and vulnerable people and I want to reassure any person who has suffered a similar experience that if they report the matter to us they will be treated with respect, dignity, compassion and of course discretion. Detective Chief Inspector Pam Trevillion has recently joined the St Helena Police Service and leads the investigations team and the safeguarding of children and other vulnerable people. DCI Trevillion has significant experience of investigations and child protection and I know she and the team are committed and dedicated towards victims of sex and abuse offences. I would urge anyone who has suffered such a crime to

come forward and speak to my team.

In terms of offenders, all investigations will be carried out professionally, fairly and impartially - but also robustly and determinedly. The search for the truth is the priority and all investigations are carried out with an open mind. If convicted and sentenced to a term of imprisonment, our focus turns to providing a rehabilitation programme with the objective of preventing further offending.

The appointment of an experienced Probation Officer, skilled in designing programmes for sex offenders, is a clear signal of our commitment to rehabilitate to prevent future victims of such crimes. The Probation Officer enhances the offender management programme already in place within the Prison that seeks to rehabilitate offenders before they are released back into the community.

The area that has developed significantly over the last year is the monitoring of offenders when they leave Prison and what support can be provided to them as they re-enter the community. Offenders can now serve part of their sentence back in the community, with important licence conditions and support and monitoring of their behaviour. If an offender breaches these licence conditions they can be recalled back to Prison to serve the rest of their sentence. The decision to recall any offender is not done lightly and an appeals process is in place for any decision to recall. Also, whilst in Prison, inmates can - subject to their behaviour and other conditions - be released daily from the Prison for work. Daily release for work can assist in the integration back into work and the community following release, but this is an earned privilege, not a right - and the prisoner's behaviour plays a significant part in deciding when they may be released.

Other measures are also available to further protect our communities. Sexual Offences Prevention Orders can be put in place to restrict the activity of individuals when they pose a threat to the safety of others. A Sex Offenders Register is also in place and plans are being developed to enhance further the monitoring of sex offenders within our community. In addition, all the public protection agencies play a role in identifying and managing those persons who pose the most risk to the community of St Helena through a multi-agency forum.

Let me be clear, the priority and commitment of the Police, Health & Social Services, and Education Directorates, together with other partners and agencies - is the protection of children and vulnerable people within our community. More broadly, in my view we all have a part to play in protecting the vulnerable - so I would urge any person with any information regarding offences against children or vulnerable adults to contact the Police or Social Services. If you are a victim of such crimes, you can speak to us in total confidence.

Trevor Botting
Director of Policing
9 May 2014

Dear Editor,

I would like to add to my dad's letter in last week's Independent regarding our son Dane Patrick Keith Wade. It was a devastating time for us, especially being off the island when it was all happening to our son. It happened not once, but twice to us, and whilst we were back on St Helena, Dane was progressing well within his work at Basil Read; it was nice to hear the comments from strangers about how well mannered Dane was, so helpful and hard working. I can't and still don't understand why this arrest had happened again!

I took a look at the news and see what tragic things that are happening in the outside world and compare this to that, it is outrageous and sickening to the family and most of all us as parents for what and how Dane has been treated. We as parents were allowed two calls per week to Dane; to us this was punishment as we waited for each time to come soon. If you have a child you will understand what it is like to have the most precious thing take from you, no matter what the age. No one will ever know what suffering and pain that we have been through and are still going through it, let alone a nineteen year old child whose life was just getting started and been taken away. I wouldn't wish something like this on my worst enemy!

Life had been taken from the earth and they were not treated as what our son went through. Sorry for having to bring this up but it is facts that have happened.

I like to thank both my wonderful Mum Linda and Dad Patrick for the continuing support and care for their Grandchild

Your Opinion Counts

Dane and also us, I know it has been a rough time but we now have to look ahead. Any amount of words cannot express our gratitude for you both.

Also to our other family members, who visited him in the HM Prison on numerous occasions, I won't mention names as there is quite a lot of you, and also to the people of Ascension Island friends and family who also visited Dane whilst on vacation in St Helena, you will remain in our hearts for the continuing support and advice given during this time.

Any way I hope one day God will look down on us and take away the grief and pain that we have suffered and put things right, as he is the only Judge!!

**God Bless
Yours faithfully
Rosemarie & Kevin Wade
Parents of Dane Wade
Ascension Island**

**Dear Editor,
It is not Gold – But it has a Value**
I refer to the article in the Independent dated 25th April 2014 concerning a rock from Horse Point. I recently had the opportunity of visiting the area and was intrigued by the rock deposit. In the bank of the newly cut road there is a thin layer of these rocks and the surface in the vicinity is strewn with small rocks. I'm convinced that this is a strewn field

and that the rocks are not terrestrial - but are meteorites and were deposited fairly recently. I also think they are carbonaceous chondrites (not scientifically verified) and if so are very rare and of course valuable.

The meteor from which the rocks came would have entered the atmosphere over St Helena and whilst still in flight fragmented into thousands of pieces, which fell on Horse Point.

It may surprise readers to learn that Earth is subject to constant bombardment from space. At least 20,000 tons of meteorite material penetrates our atmosphere annually - more than 50 tons a day.

I would suggest that a sample of the rocks be sent away for scientific analysis.

**Yours sincerely,
Stedson George**

CELEBRATING ACHIEVEMENTS IN EDUCATION

The Education and Employment Directorate is pleased to congratulate Mrs Mavis Brooks ('Meggie') and Miss Tania Yon on their achievements for passing their teaching courses through distance learning.

Meggie, a Higher Level Teaching Assistant in Pilling Primary School, was the first staff member to complete and pass her course which focused on Managing Behaviour at Level 2. Tania, an Early Years Teacher in Harford Primary School, studied the Early Years Foundation Stage at Level 3.

Speaking about her experience Meggie said:

"The course was very exciting for me as this was the first time I'd experienced

studying through distance learning - I managed to complete this course in seven weeks instead of the year given.

"I feel that most of the modules covered were applicable as I have been exposed to some of these situations in classroom teaching. That is what made this course so much easier to understand and I was able to complete the assignments in less time than required."

Tania said:

"Whilst some may see distance learning as additional work, for me it was an opportunity to further my knowledge and hopefully gain a qualification at the end. It is also pleasing for me to say that I thoroughly enjoyed the course.

"Distance Learning has opened a new gateway to learning for me. Through researching information for my assignments, it has made me more knowledgeable in certain areas that I hadn't encountered before and this has made an impact on my teaching and learning as I can now put this into practice within the classroom.

"I am proud to have gained my qualification in EYFS at a Level 3 which is equivalent to an Advanced Diploma."

Director of Education Colin Moore added: "Meggie and Tania lead the way in demonstrating how all staff in the Directorate show that lifelong learning is not only what we believe in but what we practice. I am delighted to offer my personal congratulations to both of my colleagues." Studying through distance learning is an

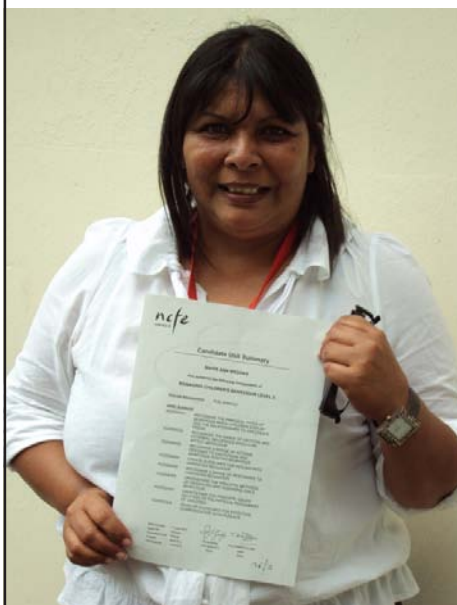


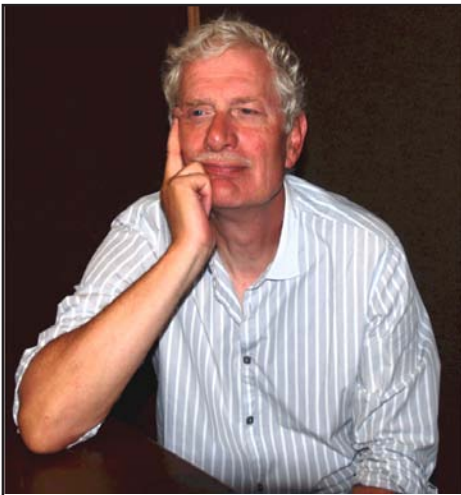
opportunity available to all staff within the Education and Employment Directorate to support their professional development. Since September 2012, 33 staff have enrolled on distance learning courses. For many staff, this is a new learning experience. Finding time for studies, in addition to the normal demands of a being a teacher, is a challenge but it is one that both Meggie and Tania faced and overcame.

**SHG
5 May 2014**



**St Helena
Government**





A Funny Thing Happened

Vince Thompson

How Other People Do It - part one

St Helena is just one of several places where large numbers of dolphins can be easily seen not far off shore. Cardigan Bay in Mid Wales is also noted for its dolphins. The 60 mile coast line is a perfect breeding ground for dolphins, 300 have been recorded there so far.



A state of the art telescope, called a digiscope, has been installed at a prominent observation point to attract more people to come to see the dolphins as well as to record the numbers and movements of the dolphins in the bay. The £3,000 telescope can have a camera attached to it to record high quality images of the dolphins and particularly their fins. A local charity, The Sea Watch Foundation, who provided the telescope explain that dolphins can be recognised by the nicks and notches in their fins, which they describe as an important identification method; similar to human fingerprints. A charity spokesman said, 'We usually monitor the dolphins on boats but the digiscope will give us the option of tracking the dolphins from shore when the weather is bad as well as saving on costs.'

Cardigan Bay has shallow waters and plenty of food for fish; this provides an excellent environment for dolphins to rear their calves. It occurred to me a good spot for a telescope here might be just above the landing steps, round about where the bailey bridge was going to be.

How Other People Do It - part two

While St Helena is starting to warm up for the Napoleon bi-centennial next year, the Isle of Elba has its own Napoleon bi-centennial commemorations in full swing. St Helena and Elba are similar in that Napoleon was exiled to both islands. In several other ways there are big differences. Elba is only 12 miles from the Italian coast; no wonder Napoleon's first exile was so short, he could almost have swam to freedom. Elba also is a thriving tourism centre; not struggling to get started as we are in St Helena. Elba is very popular with the Germans, so popular the road signs are in both Italian and German. Napoleon is also a very popular historical figure among the local population. So popular, in fact, last Sunday several hundred people celebrated the 200th anniversary of Napoleon's arrival at Elba, to start his first exile.

Napoleon's Elba exile was very different from his experience after arriving here. He arrived at Elba as ruler of the Island and is fondly remembered for the improvement he brought to Elba during his short period of rule. He was responsible for large public works projects such road improvements, a new hospital, new schools and a theatre. All this was completed during his short time in Elba; 'by the time he left, Elba had entered the modern era', says Gloria Peria the local historian.

Napoleon's arrival at Elba is commemorated every year but, for the 200th anniversary, extra effort was put into the planning and organising. Hundreds of Napoleon enthusiasts travelled to Elba to take part. Dressed in period costume they waited at the seafront for Napoleon's understudy to arrive; standing at the prow of a large rowing boat. Cannons were fired to salute the emperor's arrival. Napoleon stayed in Elba for less than a year before going back to France and starting



his career all over again.

Other activities in Elba to commemorate Napoleon's bi-centenary include the exhibition of a large field tent used by Napoleon as his headquarters when in battle. A Napoleon Regatta yacht race and a walking festival centred on visiting Napoleonic sites.

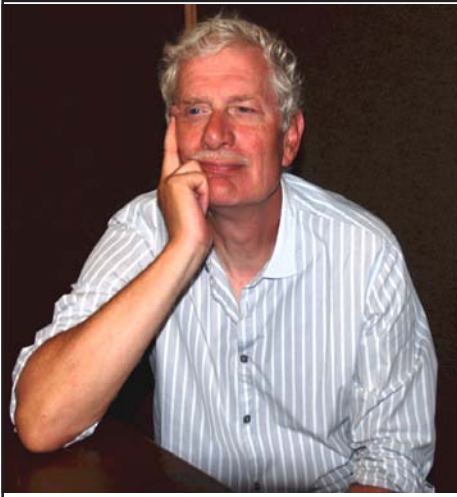
The Japan Times reports on Napoleon's arrival at Elba on Sunday.

Maybe there are one or two similar activities which could be organised here. A walking festival including a route from The Briars to Longwood House, via the Tomb seems the easiest and most obvious. In James Bay it would not be impossible to have a parade of boats from among the several which are always anchored there [to link with a street parade from the hospital to the seafront] and maybe an event which is aimed at attracting a few more yachties to our shores to join in the bi-centennial fun. I wonder if we could re-enact a battle somewhere. The Battle of Austerlitz was fought over hilly countryside and we have a good few cannon lying around to give a touch of realism to such an event. The problem is, I'm sure, the usual one; who is going to organise a battle and who is going to lift the cannon? Maybe that one can wait for the tercentenary.

The Numbers Game

Consultant's reports and legal opinions can be, and often are, very similar in one important respect. Whoever is paying for it expects to get the kind of recommendations or conclusions he or she wants to have. Consultant's reports giving projections on the number of tourists likely to be visiting St Helena in five, ten or twenty year's time are increasing in number almost by the month. The numbers in these reports vary widely. The Whitebridge report had 30,000 people coming to St Helena within a few years of the airport opening; for their projections for twenty and thirty years ahead the sky was the limit. Journey Tourism was almost as optimistic on numbers with their 'rapid growth' scenario.

Where the people will come from is a



A Funny Thing Happened

Vince Thompson

little information on the Avia Solutions website; so little it is more than a little worrying. What is more worrying is that when they do actually say something you have to wonder how on earth they got to that conclusion. At the moment Avia Solutions are telling us that people who started their journey to St Helena from the UK and South Africa make up 50% of all tourist and business arrivals. How they arrive at this conclusion is not explained and it looks very wrong.

question on which consultants give even more varied projections in their reports. Some numbers are put together to support the proposal for using a South African airport as an international hub; so if people from Europe want to come here they have to go to South Africa first. Other numbers in other reports tell us the bulk of the tourists will come from the UK and Europe and therefore direct flights from Europe should be preferred over using South Africa as the only direct link. The truth is that nobody can foretell the future and that even the most soundly based numbers projection is still guesswork; but some guesswork is more reliable than others.

I took another look at the Avia Solutions website earlier this week. Avia Solutions are contracted by DfID to give numbers for where tourists will start their journey from to come to St Helena for a holiday. DfID will use this information to decide what airports the chosen airline for our St Helena airport will serve. There is very

One considerable flaw in the whole thing is that SHG immigration figures will give the nationality of people arriving at the landing steps. It is a big assumption to think that everyone who arrives here starts their journey from the country in which they were born. Immigration also classifies arriving passengers by the type of entry permit they have or require. From that information it is an assumption whether or not a particular person arriving here is a fully paid up tourist who will be staying in a hotel, booking taxis, taking tours and eating in restaurants. The kind of data which identifies genuine tourists is not available and it is dangerous to make too many assumptions from the figures which are available.

Recent figures show a big increase in arrivals from South Africa. This is the Basil Read effect. It is a temporary blip in the figures and it should fool no-one. On the other hand, I have been shown figures

compiled by someone who takes guests. The figures cover a recent twelve month period and are from the registration details taken when guests arrive. These figures show that more than 80% of the guests travelled to St Helena from the UK. Yes, this is a small sample but there is no confusion or assumptions about who is or is not a proper tourist or about whether the person was born in or started the journey at the country shown on the passport.

When it comes to compiling information to support a decision on where planes should fly from and to after our airport opens we really do need to understand the figures we are looking at and what they really mean. At present so many different figures are being bandied about it is easy to lose focus and arrive at a disastrously wrong decision.

One further thing about Avia Solutions; they invite you to register your personal details on their website and to give them your comments. They say they will get in contact with you straightaway. I've registered, I know other people in St Helena who have registered, but I know no-one who has been contacted by Avia Solutions as they promise. This does not build up any confidence in the consultants who have the job of advising DFID on important decisions about our future airline operator.

NEW YEAR HONOURS 2015 - OVERSEAS LIST

The Foreign and Commonwealth Office invites nominations for the 2015 New Year Honours List. It is once again stressed that nominations for this list must be supported by a persuasive account of the outstanding, innovative or self-sacrificing service and achievements of the nominee. Where possible, nominations should place emphasis on voluntary services. It should also be noted that age is not a factor in awarding Honours and younger members of the community who have made an outstanding contribution or have given exceptional service should not be overlooked. It is important that nominations are kept confidential and that nominees are not made aware that they are being proposed for the award of an Honour.

Nomination forms are available from Mrs Carol George, Corporate Services Executive Manager (tel: 22470). Completed forms should be returned to the Executive Secretary, Honours Committee at the Castle - in a sealed envelope, marked confidential, **by Friday 16 May 2014.**

SHG
5 May 2014

PORT MANAGEMENT - USE OF THE WHARF

Due to works currently being carried out, the Wharf will be open to pedestrians only between the hours of 16.00 & 8.30 hrs Monday to Friday and from 16.00 hrs Friday until 08.30 hrs Monday morning (ie, open to pedestrians only, and authorised vehicles only, over the weekend).

These arrangements will commence on Wednesday 7 May, with restricted ac-

cess to vehicles, **due to construction works taking place on the Wharf.**

There will be a barrier placed adjacent to the freight terminal where the construction work starts.

Authorised vehicle users will be able to drop off/pick up equipment to and from the lower steps - for example, diving equipment, fishing tackle etc - before returning their vehicle to the area beyond the barrier.

No vehicle at any time can be left parked on the Wharf between the construction site and the landing steps, as this area will need to be kept clear in the event of an emergency.

Port Management would like to take this opportunity to thank everyone in advance for their cooperation. Further details regarding use of the Wharf will be announced in due course.

SHG, 6 May 2014

Hazardous Waste, Mole Spiders and Airport Navigation

Vince Thompson

All Basil Read's hazardous waste is being stored at Bradley's Garage and has been since the start of the airport project. The plan was to dispose of it by shipping it overseas but it was subsequently found this is prohibited by international conventions. There are no adequate facilities to dispose of it in St Helena so, for the moment it is stored while the solution to this problem is found. Halcrow say, 'We are getting very close to such a solution, but it would be premature to provide further details until we have confirmation'. The disposal problems associated with hazardous waste means Basil Read is currently failing to meet one of its environmental standards; simply because the limitations placed by international conventions make it impossible to do so.

Basil Read and Halcrow teamed up to present their first environmental report for the airport project on Monday evening. The Museum was chosen for the venue and about 45 people attended. The presentation took one hour, despite the report being light on solid information about environmental standards as the airport work progresses from Rupert's Bay through the route of the Haul Road to the airport site itself. After the presentation questions were invited and the discussion immediately focussed on the fate of the mole spiders which may have chosen to live too near to their new neighbours, Basil Read. The presentation of the report did not include any reference to mole spiders; an indication that some people attending the meeting had other things on their minds rather than things like the amount of dust and noise caused by the rock blasting, filling of Dry Gut and the cutting of the Haul Road route to formation level.

After a lengthy general introduction to the first environmental report the Halcrow and Basil Read representatives turned to the environmental monitoring regularly undertaken at the various project locations and the methods used to measure whether or not environmental standards were being maintained. The report covers the period from the start of the project up to July 2013. Questions were raised about why it had taken 10 months to produce the report; no specific answer was given however the report for the period up to June 2014 was prom-

ised to be available in July this year. The 2013 report will be available on the air access website. It was expected to be available earlier this week but could not be found.

The main part of the environmental report, when available, will show what environmental issues, such as dust noise and hazardous waste disposal, are being monitored, what environmental standards are to be achieved and when the standards have been met or not. This detail was not included in Monday's presentation at the Museum. Halcrow explained after the meeting, 'it is important to understand that yesterday's presentation merely provided a window into the Annual Environmental Report. It was never intended to provide the kind of detail you are referring to as this would have made the presentation too long.'

Overhead Lines Out of Favour

The power supply to the airport has changed more than once over the course of time. At one time it was intended to supply power over a 500KVa line but it was later decided to upgrade to a 750KVa power supply. Permission for the temporary overhead power line was given by Governor-in-Council.

The airport contract, the Environmental Statement and the Environmental Management Plan all stipulate the power supply to the airport should be laid underground. Now, the Air Access Office wants permission for some of the power lines to be overhead. An application for an amendment to the development per-



mission to allow some of the power lines to be strung above ground was considered by the Planning Authority on Wednesday. The final decision is made by Governor in Council however the Planning Authority recommended to Governor in Council the application to amend the existing decision should be declined and the lines should be laid underground.

In their application for an amendment the Air Access Office point out the permanent power supply to the airport needs to be in place by July 2014 so that the navigational aids for the airport can be functional by August 2014. Any delay on this will put the installation of navigation systems behind schedule. In order to keep on schedule a decision is required from Governor in Council by 15 May.

HEALTH & SOCIAL SERVICES DIRECTORATE VACANCY AMBULANCE DRIVER/HANDYMAN

The Health & Social Services Directorate has vacancies for an Ambulance Drivers/Handymen to carry out all handyman duties which are required for the effective provision of the directorate's general and emergency services.

Salary for the post is at Grade B commencing at £6,542 per annum.

For further information please contact Mrs Lillian Andrews, Senior Executive Officer on telephone no. 22500.

Application forms are available from the Health & Social Welfare Directorate and should be completed and submitted to the Human Resources Officer, Health & Social Welfare by Monday, 19 May 2014.

A Jenkins (Mr)

Director

5 May 2014

Health & Social Welfare Directorate





Alleviating Financial Struggle
Registered Charity No. C0033
Registered Company No. 101

aids. We ensure that new parents have a basic starter pack to ensure that their baby's basic physiological needs are met. We assist those who move into new homes with necessary furniture and equipment. We focus particularly on children and their families, new parents, older persons and the vulnerable. Making Ends Meet works closely with Social Services and the Disabled Persons' Aid Society to ensure that the right people are targeted. We have recently been invited to work in partnership with Connect St Helena to mitigate utilities hardship and to prevent debt. If you know of anyone in need of financial support, please contact any member of Making Ends Meet. Our new Committee is as follows:

Chair: Cilla McDaniel, Treasurer: Christine Thomas, Secretary: April Lawrence, Members: Vyona Young, Ian Rummery, Paul McGinety, Solomon Lebes, Tara Pelembe, Julie David

The Charity has grown on the generous donations of the likeminded community living in St Helena and in the Diaspora. We are pleased to publish the July 2013-March 2014 account.

Income		Expenditure	
Donations	5,762.07	Utilities	420.00
Art in the Island	874.49	Medicals	274.20
Care for Christmas	660.08	Advertising	20.00
Grants	800.00	Vouchers	760.00
Bank Interest	-	Funeral Expenses	40.00
		Childcare	9.00
		Housing	500.00
		Printing, postage & stationery	203.98
		Care for Christmas	300.00
		Other	55.00
	8,096.64		2,582.18
Net surplus	<u>5,514.46</u>		
Represented by:			
Petty Cash	186.20		
BOSH account	5,328.26		
	5,514.46		

The primary focus of the charitable company Making Ends Meet is to alleviate financial struggle for all people living in St Helena. This is based on the fundamental philosophy of humankind that everyone is entitled to a reasonable standard of living. Making Ends Meet embraces Human Rights, Child Rights including the United Nations Convention on the Rights of the Child and our island's Constitution which stipulates statutory rights to physiological needs.

We provide food, clothing and toiletries vouchers, assistance with utilities deb and purchase of cooking fuel. We pay medical fees and transport for essential appointments. We support the purchase spectacles and hearing

MAKING ENDS MEET GIVEAWAY DAY

WHEN: Saturday 10th May 2014

TIME: Starting at 10am until 1pm

WHERE: Jamestown Community Centre

Available are boys and girls baby clothing of various ages, girls, boys, women and men's clothing and shoes, baby toys and much more all FREE!

Donations will be accepted if possible.

Teas/Coffee and tuck shop will also be available.



Monthly Newsletter from The Environmental Management Division, Environment & Natural Resources Directorate

April 2014

KEY AREAS OF WORK IN EMD THIS MONTH:

- NCA Management Development Plan
- Environmental Protection Ordinance
- Endemic and Native Plant Collection, Distribution and Propagation Policy
- Darwin Plus rare plant census
- Archaeology
- Environmental Assessments
- Support to Airport Project: Construction & Certification.

MORE ON ARCHAEOLOGY

John Barber, archaeology advisor/ trainer left the Island on 24th April after a 2 month visit. During his time on Island, John:

- Reviewed our archaeology baseline;
- Created the basis for a system/ process for the effective management of St Helena's archaeological resource;
- Recommended roles and responsibilities for archaeology on the Island;
- Provided training for the recommended roles and responsibilities.

John met with a number of stakeholders including staff in the Environment and Natural Resources Directorate, Education and Employment Directorate, Corporate Services, National Trust, Heritage Society, Museum and Tourism.

John ran a series of training sessions, intended primarily for those who had been identified as having a key role in the management of archaeology, this included staff from the National Trust, Museum and Environment and Natural Resources Division. Staff from Basil Read's environment team also attended some of the training sessions as some of the sites used for the practical training were within the airport development area. We thank Basil Read and the PMU for facilitating access to these sites.

The training covered the following topics: managing heritage assets; management of heritage projects and post excavation processes and included both theory and practical sessions.

The following are some of the comments received on the training:

"Immensely informative and useful" *Alfred Isaac, Planning Officer*

"A great insight into the management of St Helena's important heritage" *Dave Higgins, EMD*

"Really interesting and useful and the skills will be used in my line of work" *Adam Sizeland, Museum representative*

"The Archaeology field was totally new to me. I found the training sessions interesting especially when John related to some of his own experiences. The highlight for me was the field sessions, excavating to reveal the construction and repairs to a bridge including scaled drawings. The unknown is always there. I hope to use these basic skills as required." *Kevin George, National Trust*

A session on development control and heritage processes was also held for the Land Planning and Development Control Authority and the Planning and Development Appeals Tribunal. A session was also held with members of Legislative Council.

Whilst we had hoped to involve members of the public in the training, this was not possible and we do apologise to those who registered their interest that we could not accommodate you. We will however look for opportunities to run training and public awareness events in the future.

Prior to leaving the Island, John submitted his draft report which is currently being considered by key stakeholders. Under SHG's contract with AOC, John will also provide remote support on a call-down basis for the next six months.

Isabel Peters,
Environmental Assessment and Advocacy Manager

INSTALLATION OF ARTIFICIAL NEST CHAMBERS ON EGG ISLAND

As part of the development of a monitoring programme for the Madeiran storm petrel populations on Egg Island the Marine section installed 40 new artificial nesting chambers on the 7th March. Storm petrels would naturally use nesting cavities in between rocks and crevices which are difficult to access without disturbance so these artificial nest chambers will enable nesting and fledging success to be documented with minimal disruption. With thanks to the help from the National Trust, ENRD's Conservation Section and Jonathan Hall from the RSPB the chambers were installed at four different locations on the island. Each chamber consisted of a container with an entrance hole and removable lid. Each chamber was sunk into the ground and packed with small stones to allow drainage. A tunnel was constructed with stones just outside the entrance hole for them to access the chamber. It is hoped that these chambers will be occupied during the next breeding season in May but it may take several seasons for them to become established.

Annalea Beard,
Marine Assistant

ANOTHER TREE ON THE BRINK

Recent intensive work on the St Helena bastard gumwood, as recently as 2009 noted as the rarest tree in the world, has pulled the species back from the edge of extinction. Concerns among St Helena conservationists are now rising over the fate of its sister species, the false gumwood.

For many years the St Helena false gumwood (*Commidendrum spurium*) species has been critically endangered. Two tiny populations on cliffs at Mt Vesey and above Cole's Rock have clung to survival for many years. Sadly, the single tree at Cole's Rock died earlier this year. Now, only seven mature wild plants remain in the world. One lonely tree also used to grow on the edge of the field at Oakland; but this tree died in early 2000. With the loss of the Cole's Rock tree the species has become especially vulnerable as all remaining trees are growing together in a small patch. This means a single pest, disease infection or adverse weather condition could quickly push the species into extinction.

This small tree usually grows to about 3 metres high, although the specimen near Cole's Rock used to be almost 8m. It resembles the other gumwoods. The leaves are hairless above and are covered with short hairs below but lack the cottony hairs of gumwood. The flower heads are daisy-like, produced in dense clusters on the ends of the branches. The petals are white and much larger than those of bastard gumwood, and the leaves lack a slender stalk at the base. The false gumwood remains critically endangered. To help and save this species we are monitoring the Mt Vesey trees and collecting seeds, which are cleaned and stored in our endemic seed bank.

Vanessa Thomas, the endemic nurseries officer and manager of EMD's species team, explained "As part of our propagation the species team have established a new seed orchard, where young false gumwoods from seed collections at Mount Vesey and Cole's Rock are growing. While we are reasonably successful at growing the other three gumwood species to maturity, false gumwood remains a challenge. The seed germinates well and early seedling growth is good. However, young saplings have a slow growth rate and are susceptible to leaf curl which restricts growth further. Of the 100s of saplings we have planted back in the wild, few survive. Those that do survive grow very slowly and are susceptible to competition from invasive weeds and damage from pests and diseases."

With over 45 endemic plant species to monitor, propagate and take care of, the small species team are certainly busy. As resources permit we are trying different cultivation methods to see what conditions this species needs to survive to maturity.

Vanessa Thomas, Nursery Officer



Celebrate International Day for Biological Diversity on St Helena.

Celebrated worldwide on the 22nd May,

For the very first time St Helena will be celebrating a day earlier as part of St Helena's Day, 21st May.

The Theme for 2014: Island Biodiversity

BIOLOGICAL DIVERSITY OR BIODIVERSITY SIMPLY REFERS TO THE DIFFERENT KINDS OF LIFE ON THE EARTH.

THE DAY WAS ESTABLISHED BY THE UNITED NATIONS AND HAS BEEN CELEBRATED SINCE 2001 AND IS USED TO INCREASE AWARENESS AND UNDER-STANDING OF BIODIVERSITY ISSUES.

Environmental Management Division | Essex House | Jamestown | STHL 1ZZ
Tel - (290) 22270
Email – isabel-peters@enrd.gov.sh

EMD
"Our Island. Our Environment. Our Responsibility."

2

Job Vacancy

IP Networks Systems Administrator

Have you considered a career in IP where services are continuously changing with new technologies, then Sure has a vacancy for an IP Networks Systems Administrator to work within the IP Networks team at the Technical Operations Centre, The Briars.

Essential Skill Requirements

Qualifications/Experience:

- A high degree of computer literacy
- Cisco CCNA or other Network equivalent certification.
- A good knowledge and understanding of computer networking
- Experience and understanding of a variety of different systems such as UNIX, MS Windows 2008 / 2012 Server, DNS, Active Directory, Windows 7/8, MS Office 2010 or higher, Cisco Routers and Switches.

Personal Qualities:

- An ability to deal effectively, professionally and confidentially with internal and external customers directly and indirectly via Helpdesk support.
- Good communication and interpersonal skills
- A high degree of accuracy and adherence to deadlines
- Basic administration skills
- Good organisational and problem solving skills
- A valid class "A" driving licence
- Candidates must be energetic, enthusiastic and proactive in everything they do
- Willingness to work outside of normal working hours at a moments notice.

Salary for the post is negotiable and the successful candidate may be required to serve a probationary period of six months.

Join us and you will enjoy some of the many benefits that Sure offers.

Further information regarding the responsibilities of the post may be discussed with Adam Yon, Manager Networks on Tel no: +290 22229. An application form and copy of the Job Description may be obtained from Shara Robinson, Human Resources and Administration Manager at Bishops Rooms on Tel no: +290 22800 or email: HR-Admin.Manager@sure.co.sh

Applications should be submitted to Human Resources and Administration Manager, Sure South Atlantic Limited, Bishops Rooms, Jamestown by **4pm on Monday 19 May 2014.**



JOB VACANCIES AT THORPE'S

STOREMAN

TO WORK IN THE GROCERY SHOP

- 9am – 5pm hours
- Free home to duty transport
- Attractive leave and sick leave package
- Opportunity to progress in the company
 - School leavers welcome
 - £4,436.64 per year

Contact Carol Yon on 22781,
admin@thorpes.sh
Thorpe's Office, Market Street



TILL ASSISTANT

TO WORK IN TINKERS COLD FOOD SHOP

- 9am-5pm hours with shiftwork on Friday and Saturday
 - Part time work available
 - Free home to duty transport
- Attractive leave and sick leave package
 - £5,471.64 per year

STOREMAN-DELIVERY DRIVER

TO WORK IN THE WHOLESALE STORE

- 9am-5pm hours
- Free home to duty transport
- Attractive leave and sick leave package
- Opportunity to progress in the company
- Opportunity to progress and also to gain forklift license
 - £5803.20 per year



Bank of St. Helena Ltd.

www.sainthelenabank.com

FOR SALE BY TENDER

Bank of St Helena Limited invites Sealed Tenders from the public for the purchase of the under mentioned property on an "AS IS, WHERE IS BASIS" and an "AS IS, WHAT IS BASIS".

Description of Property:

A substantial freehold estate, which comprises of 1.6 acres, accessible via the entrance below the Red Hill Inspection Centre. This property is registered as Parcel 82, in the Scotland Registration Section.

For further information, Tender Forms and/or Terms and Conditions, please contact Mrs Julie Thomas, Lending Manager on telephone number (+290) 22390 or email: lending.manager@sainthelenabank.com

All Tenders must be submitted by no later than 2pm on Monday, 30 June 2014.

Tenders must be submitted **through** the **Lending Manager** and addressed
"TENDERS FOR BOSH PROPERTY 002", Bank of St Helena Ltd, Market Street, Jamestown, St Helena Island, STHL 1ZZ

Head Office: Market Street · Jamestown · St Helena Island · STHL 1ZZ

T. +290 22390 · F. +290 22553 · email. info@sainthelenabank.com · web www.sainthelenabank.com

Established and regulated under the Financial Services Ordinance 2008 the Company Ordinance 2004 and the Company Regulations 2004



JUST UNPACKED

**AT
WARRENS DEPARTMENT STORE**

A WIDE RANGE OF

**WE
ARE**

Maternity

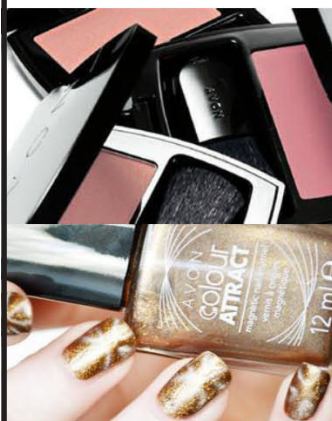
AND



PRODUCTS & CLOTHING

SHOP NOW TO

AVOID DISAPPOINTMENT



A LIMITED SELECTION OF
AVON PRODUCTS
ARE ALSO AVAILABLE
WITH MORE ARRIVING SOON





Bank of St. Helena Ltd.

www.sainthelenabank.com

VACANCY Lending Manager

Salary commencing at £14,052 pa
(depending on qualifications & experience)

Bank of St Helena Ltd is seeking to recruit a Lending Manager who has the right mix of skills and experience to lead and support our Lending team. This is a diverse and challenging role, presenting great opportunities for a dedicated, dynamic individual ready to take up the challenge.

The main duties of the post will include:

- Responsibility for effective and efficient management of the Lending Section which includes Commercial and Personal Lending.
- Receive, review and analyse loan applications (primarily Commercial Loan Applications), making the necessary decisions (subject to the Bank's lending authorisation policies) for recommendation to the Managing Director.
- Responsible for monitoring loans for compliance with Terms and Conditions
- Responsible for working with Bank Clients on settling loan defaults and also working where necessary with the Bank's Legal Representative on legal related matters.
- To review and update policies and procedures .

Candidates suited to this role should have good management and leadership skills, ideally a recognised qualification in Commercial Lending or Banking/Finance and or have directly related work experience in the finance/management field. Candidates will need to have strong financial/accounting skills and analytical skills and a good understanding of business plans and business structures.

This is a senior management role and the successful candidate will work alongside a dedicated team with a breadth of experience and commitment to ensuring organisational success.

For further information about the post please contact Rosemary Bargo, Managing Director on telephone (+290) 22390 or in person, or contact Joey George, Human Resources & Customer Services Officer on telephone (+290) 22102.

An application form and a job profile is available upon request from the Bank. Completed application forms should be addressed to Joey George, Human Resources & Customer Services Officer, Market Street, Jamestown **or** email to human.resources@sainthelenabank.com

Closing date for applications is Monday, 19 May 2014

Head Office: Market Street · Jamestown · St Helena Island · STHL 1ZZ
T. +290 22390 · F. +290 22553 · email. info@sainthelenabank.com · web www.sainthelenabank.com
Established and regulated under the Financial Services Ordinance, 2008, the Company Ordinance, 2004 and the Company Regulations 2004

Armchair Supporters View by Nick Stevens

English Football

Liverpool's title ambitions hang by a thread after they drop 3 valuable points in their match against Crystal Palace on Monday night. Liverpool lead the match 3-0 with just 11 minutes of the game to go; only for Palace to stage a remarkable comeback as they score 3 goals in 9 minutes. At the final whistle the Liverpool fans and players were reduce to tears. Despite the 'Reds' going top by 1 point they knew they had hand the advantage to Manchester City.

City came through a tricky match against Everton on Saturday to go top on goal difference; they took full advantage of Liverpool's slip up as they defeated Aston Villa 4-0 on Wednesday night. City now top the table by 2 points with 1 game left.

If Liverpool fail to win the Premier League on Sunday it will be a devastating blow for the club as they had topped the table for most of 2014 and had played the best football. When they defeated Man City 3-2 they were odds on favourites to win their first ever EPL title.

There is still hope for Liverpool as this season has proved to be unpredictable; they face Newcastle in their final game and City play West Ham.



Toure could lead City to the title on Sunday

Chelsea dropped out of the title race as they drew 0-0 with relegation threaten Norwich City.

Ryan Giggs suffered his first defeat as manager of Manchester United when the loss once again at Old Trafford. Sunder-



land who has been in good form beat the 'Red Devils' 1-0; this win along with another win against West Brom on Wednesday night ensure Sunderland play top flight football next season.

United bounce back from that bad performance against Sunderland as they won 3-0 against Hull on Tuesday night. This game mark the last home game for Nemanja Vidic as he leaves for Inter Milan at the end of the season. This could also be the final game for a number of United players as the club look to rebuilt after their worst ever season in the EPL. Ryan Giggs who have been playing for the club since 1991 and has picked up 13 league titles could have played his last game at Old Trafford. He has also won 2 Champions League medals, 4 FA Cup medals and 3 League Cup Medals.

Ryan Giggs has made a record 962 appearances for United scoring 168 goals.



Ryan Giggs tearing teams apart since 1991

Armchair Supporters View by Nick Stevens

What's happening at New Horizons?

Last Friday we had an enjoyable Cricket match against Basil Read. Basil Read batted first and scored 183 for the loss of 7 wickets; the majority of their runs were made by Rory, Mike Arjeou and Damien O'Bey. Jordie Henry took 3 wickets for New Horizons. In reply New Horizons were bowled out for 124; Gareth Johnson made 37, Nick Stevens 26 and Ross Leo made 12.

We would like to thank Basil Read for giving the club the opportunity to play

cricket at a different level.

The holiday programme is going well. We had various tournaments running this included Pool, Darts, football and Air Hockey. We also have made a good start on the prep for St Helena's Day.

I also did some teaching in Basketball and Cricket Skills.

We currently have 16 stalls booked for St Helena's day. We have a possible 4 teams for the Novelty Sports. We are looking for more floats as we only have 4

so far. We would like to urge the public to take part in the various activities as the day will only be successful and enjoyable if you do so.

We now have sponsor sheets available for the Mini Marathon and the Ladder Challenge.

If you are interested in entering a float please contact us at New Horizons on telephone 22034 or email youth@helanta.co.sh



Basil Read and New Horizons Cricket Teams



Golf Report Weekending 4th May 2014

Only one competition was played over the weekend that was on Sunday 4th May when there was an 18 hole Bogey, this is a game where players are given full handicap the format is based on score on each hole, one or less under par is a plus, par is a square and anything shot over par is a minus. The winner is determined by subtracting the pluses from the minus, if no pluses then by whatever minus. The pars are neutral.

It was a very poor turn-out of just nine players the weather was very windy and misty so it was not surprising to have such a low turnout.

Scott Crowie was back again this week, practising for the Open which will be next month he had a minus 2 so did Lawson Henry but Scott won on the count back to take second place, on his own with a very good minus 1 was our veteran player Gerald (Whistler) George. Scott and Lawson play off a handicap of 3 and Gerald 10.

Just two players holed out in two to share the ball pool that was Brian (Peachy) Coleman who had an eagle 2 on the par four 2nd hole and Scott who holed out on the par 3 fourteen hole. Congratulations to the winners.

Two competitions are schedule for next weekend On Saturday 10th May will be a Two Team Texas Scramble, (stroke play) this time there will be a draw for partners by high and low handicap. On Sunday 11th May will be an 18 hole Stableford which will be played to the Furrows.

Members taking part in the Texas Scramble are advised that it is planned to have a BBQ after the game, so please bring something to put on the grill.

The two junior players who attended a 9 hole round last week with Mrs Joan Thomas enjoyed their game and are advised that Mrs Thomas will take them out again this Thursday and that there will be a trophy for the winner, so we hope more junior players will attend.

There will be a Committee meeting on Wednesday 7th May at 6pm at the club.

The Golf Club have for sale a second hand electric cooker interested persons should contact Lawson on 24458.

Enjoy the week stay safe and keep swinging!

THANK YOU

I would like to take this opportunity too Thank the Cancer Awareness Group for their continuous support and donations given to me when i was transferred to the UK for Medical, also since i've been back.

Your support is greatly appreciated
May God Bless You All in your future Campaigns.

Tony Richards.



St Helena Cricket Association

Unfortunately I didn't manage to receive the scorebook from the weekend so I am unable to publish the statistics from the Semi Finals.

In the first Semi Final Jamestown Zodiacs beat Levelwood Rebels. The Zodiacs will face Jamestown Barracudas who defeated St Paul's B. the final will take place at 12 noon on Saturday 10th May.

Prior to the final there will be a 10 over match between a team of Girls and a team of under 15 year olds.

The presentation of Cups and Trophies will take place at 4pm.



St Helena Football Association

football Results:

Last Saturday saw the kick-off of the 2014 league season. I was pleasantly surprise to see the large crowd of spectators at Francis Plain. The results are:

Chop Shop Boys 3 v Bellboys 3

Goal Scorers for Chop Shop Boys: Rico Coleman 1, Phillip Isaac 1 and Ricardo Williams 1

Goal Scorers for Bellboys: Kyle Shoosmith 1 & Leroy Caswell 2

Man of the Match: Leroy Caswell of the Bellboys

Rovers 5 v Fugees 0

Goal Scorers for the Rovers: Ross O'Dean 3 and Aaron Thomas 2

Man of the Match: Brian Sim of the Rovers.

Fixtures:

Sunday 11th May Organisers: Axis

1.30pm: Raiders v Wirebirds assistant refs: Crystal Rangers and Basil Read

3.30pm: Crystal Rangers v Basil Read assistant refs: Raiders and Wirebirds

FOR SALE

is a Ford Orion 1600cc car, MOT until June 2014, Price at £600.00. if interested then call 24293.

FOR SALE are EPSON Inkjet Cartridges in various colours. 2 sets of 4. price at £10.00 each. if interested then call 24293.



Hospitality Up-Skilling Project Training Courses available May 2014



For details on the courses and to book a space please contact 2onMain on telephone 22110.

Spaces are limited so please book early.

Courses are free of charge .

Course Title	Date	Time
EVENING. Customer Care 2: <i>What do customers expect & what standards should I work to?</i>	12 th May 2014	5.00pm to 7.00pm
Complaints Handling 1: <i>Why Complaints are important and how to listen to our customers</i>	13 th May 2014	10am to 12noon
EVENING. Make more profit from food 1: <i>Costing & selling prices & profit</i>	13 th May 2014	5.00pm to 7.00pm
Complaints Handling 2: <i>Dealing with complaints</i>	14 th May 2014	10am to 12noon
EVENING. Sushi Workshop	14 th May 2014	5.00pm to 7.00pm
Cold Presentation for Caterers	15 th May 2014	10am to 12noon
Making and working with Puff Pastry	15 th May 2014	1.30pm to 3.30pm
EVENING. Make more profit from food 2: <i>Managing waste, purchasing and your menu</i>	19 th May 2014	5.00pm to 7.00pm
Wine knowledge for beginners	20 th May 2014	10am to 12noon
Sushi workshop	22 nd May 2014	1.30pm to 3.30pm
Understanding body language	26 th May 2014	1.30pm to 3.30pm

The Training Restaurant will be closed during the South African

Exposure Visit and will re-open on

Wednesday 04th June 2014.

The Training Centre will be open for the above Courses

VACANCY FOR SANITARY ORDERLY

The Health & Social Services Directorate has vacancies for Sanitary Orderlies to work within the Environmental Health Section.

The successful applicant will be responsible to the Senior Works Supervisor (Sanitary Services) for providing an efficient and effective cleansing and waste management service to address all waste issues on the Island in accordance with the Section's work policies, procedures and guidelines.

Salary for the post is at Grade B, commencing at £6,542 per annum.

For further information about the duties of the post, interested persons can contact Mrs Georgina Young, Senior Environmental Health Officer on telephone no 22500.

Application forms, which are available from the Health & Social Services Directorate, should be completed and submitted through Directors where applicable, to the Human Resources Officer, Health & Social Services Directorate by Friday, 16 May 2014.

D A Jenkins (Mr) Director
6 May 2014

Health & Social Services Directorate



NURSERY EDUCATION

The Education & Employment Directorate wish to advise parents that all children who reach the age of 4 years during the course of the forthcoming school year, i.e. 1 September 2014 - 31 August 2015 will be given the opportunity to attend Nursery within their school for one year. We would also like to extend the opportunity for nursery provision to children born between 1 September 2011 and 31 December 2011.

It would be appreciated if parents of children who were not born on St. Helena, and will not be on record with the Education & Employment Directorate, could submit the following information in writing to:

Assistant Director Lifelong Learning
Education & Employment Directorate
Education Learning Centre
Jamestown

- (i) The child's **FULL NAME & DATE OF BIRTH**
- (ii) **NAME & ADDRESS OF PARENT/S or GUARDIAN**
- (iii) **TELEPHONE NUMBER & EMAIL ADDRESS**

In return, parents will be notified as to where and when their child may begin Nursery Education.

It should be noted that:

- (i) Based on Education Policy, a child must attend school in the catchment area where he/she is resident. Exceptions will only be made for regular attendance outside the identified catchment area if numbers in the requested school are low enough to accommodate the extra intake and parents take responsibility for transporting their children to and from school.
- (ii) Children are usually admitted into the Nursery at the beginning of the new school year.
- (iii) Children born 1 September 2011 through to 31 December 2011 will attend nursery for two years.

If further details are needed, please contact the Assistant Director Lifelong Learning on telephone number 22607 or email aves.manager@education.gov.sh.

Mr Colin Moore

Director of Education & Employment, 5 May 2014

SHFA League Fixtures Round 1

Date	Time	Fixture	Organiser	Date	Time	Fixture	Organiser
Sat 3 rd May	1.30pm	Chop Shop Boys v Bellboys 3-3	Harts	Sat 19 th July	1.30pm	Basil Read v Bellboys	Chopshop
	3.30pm	Rovers v Fugees 5-0	Harts	Boys	3.30pm	Raiders v Fugees	Chopshop
Sun 11 th May	1.30pm	Wirebirds v Raiders	Axis	Boys			
	3.30pm	Crystal Rangers v Basil Read	Axis	Sun 20 th July	1.30pm	Rovers v Crystal Rangers	Harts
Sat 17 th May	1.30pm	Harts v Axis	Crystal Rangers	3.30pm	Wirebirds v Axis	Harts	
	3.30pm	Raiders v Basil Read	Crystal Rangers	Sat 26 th July	3.30pm	ChopShop Boys v Raiders	Crystal
Sun 18 th May	1.30pm	Chop Shop Boys v Rovers	Bellboys	Rangers			
	3.30pm	Fugees v Wirebirds	Bellboys	Sun 27 th July	1.30pm	Bellboys v Fugees	Rovers
Sat 24 th May	1.30pm	Raiders v Axis	Rovers	3.30pm	Basil Read v Axis	Rovers	
	3.30pm	Bellboys v Crystal Rangers	Rovers	Sat 2 nd Aug	1.30pm	Basil Read v Harts	Bellboys
Sun 25 th May	1.30pm	Fugees v Harts	Wirebirds	3.30pm	Crystal Rangers v Wirebirds	Bellboys	
	3.30pm	Chop Shop Boys v Basil Read	Wirebirds	Sun 3 rd Aug	1.30pm	Fugees v Chopshop Boys	Axis
Sat 31 st May	1.30pm	Rovers v Wirebirds	Raiders	3.30pm	Raiders v Rovers	Axis	
	3.30pm	Basil Read v Fugees	Raiders				
Sun 1 st June	1.30pm	Crystal Rangers v Harts	Chop Shop Boys				
	3.30pm	Bellboys v Axis	Chop Shop Boys				
Sat 7 th June	1.30pm	Wirebirds v Chop Shop Boys	Fugees				
	3.30pm	Axis v Crystal Rangers	Fugees				
Sun 8 th June	1.30pm	Harts v Raiders	Basil Read				
	3.30pm	Rovers v Bellboys	Basil Read				
Sat 14 th June	1.30pm	Basil Read v Fugees	Rovers				
	3.30pm	Harts v Chopshop Boys	Rovers				
Sun 15 th June	1.30pm	Crystal Rangers v Raiders	Axis				
	3.30pm	Wirebirds v Bellboys	Axis				
Sat 21 st June	1.30pm	Bellboys v Raiders	Crystal Rangers				
	3.30pm	Rovers v Harts	Crystal Rangers				
Sun 22 nd June	1.30pm	Wirebirds v Basil Read	Fugees				
	3.30pm	Chopshop Boys v Axis	Fugees				
Sat 28 th June	1.30pm	Crystal Rangers v ChopShop Boys	Wirebirds				
	3.30pm	Raiders v Fugees	Wirebirds				
Sun 29 th June	1.30pm	Axis v Rovers	Harts				
	3.30pm	Basil Read v Bellboys	Harts				
Date	Time	Fixtures	Organiser				
Sat 5 th July	1.30pm	Axis v Fugees	Bellboys				
	3.30pm	Harts v Wirebirds	Bellboys				
Sun 6 th July	1.30pm	Basil Read v Rovers	Raiders				
	3.30pm	Crystal Rangers v Chop Shop Boys	Raiders				
Sat 12 th July	1.30pm	Crystal Rangers v Fugees	Wirebirds				
	3.30pm	Chopshop Boys v Raiders	Wirebirds				
Sun 13 th July	1.30pm	Harts v Bellboys	Basil Read				
	3.30pm	Axis v Rovers	Basil Read				



St Helena Day

DANCE PARTY

Date: 17th May 2014

Special Guest Entertainment

Live Band/ Brooks Brothers

Disco Presented
Wayne Crowie & his Duo

On The Spot Prizes

Children's Entertainment

Traditional Hot Food & patisserie on sale
License Bar till 2am/ closing at 2:30am

Swindon Town FC / Swindon SN1 2ED

For all information Tel: 01793/703019 or 07950839642
E-mail: sthelenafriendsunited@fsmail.net
Fb Sylvia Langham

©St Helena Friends United 2011
Charity No 1136704



THE
MISS ST HELENA
CONTEST 2014

GRAND PRIZE

£700

32" Flat Screen TV

Donated by Solomon & Company (St Helena) Plc

A Pair of Hair Straighteners

Donated by Hair 4 U

Jewellery Set

Donated by Bead Beach Limited

Dinner for Six

Donated by Flaggs Accommodation

1ST RUNNER-UP

£250

2ND RUNNER-UP

£150

CONSOLATION PRIZES

£25

Thank you to everyone
who has sponsored the
Miss St Helena Contest 2014 thus far.
They are, in no particular order:

Sure South Atlantic Limited
Solomon & Company (St Helena) Plc
Queen Mary Stores
Basil Read
Sydne Rays
RMS St Helena
McDaniels Complex

Miss STH's 1st Runner Up 2012 -
Miss Ashton Yon

Hair 4 U
Flagg's Accommodation
Island Images
Dillon & Son
Printech St Helena Limited
Susan's B&B
Reggie's Take Away
Cyril & Sylvia Fowler
Bead Beach Limited
Sunflower Café
A&D's Mini Mart
Richard James International
Connect St Helena
Beauty Spot
Essence Beauty Salon
Bliss Hair Salon
Bank of St Helena
G-Unique Designs
Philip John
Olive Bagley



THE
MISS ST HELENA
CONTEST 2014

The Friends of Guiding
are pleased to announce
that tickets for the
Miss St Helena Contest 2014
will be on sale on Saturday 10 May 2014
outside The Canister from 9am

Tickets cost £5.00 each

TEACHER VACANCIES

Math's & Music

The Education & Employment Directorate is seeking to employ a suitably qualified Math's Teacher to work in the Secondary Sector and a Music Teacher to work across the Primary & Secondary Sector.

Applicants must have qualified teaching status (local or UK) and have recent and relevant work experience.

Salary for the post is at Grade C.2 commencing at £8,801 per annum.

For further details regarding these posts, interested persons should contact Mrs Penny Bowers, Acting Headteacher at Prince Andrew School on telephone number 24290 (e-mail headteacher.pas@princeandrew.educ.sh)

Application forms which are available from Education & Employment Directorate and Corporate Human Resources should be submitted through Directors, where applicable, to the Human Resources & Administration Manager at the Education Learning Centre or e-mail hram@education.gov.sh by no later than 4pm on Monday 19 May 2014.

Mr Colin Moore
Director of Education & Employment
5 May 2014

FOR SALE

A LIMITED STOCK OF CLOTHING AT
'SHIRLEYS' IN ALARM FOREST

ITEMS INCLUDE:

LADIES TOPS RANGING FROM SIZES 12 – 24

BLACK TROUSERS FOR LADIES: SIZES, 12 - 22

LEGGINS FOR LADIES SIZES 12-20

BRA'S - VARIOUS SIZES

WHITE TEE SHIRTS FOR CHILDREN

BLUE & WHITE SCHOOL SHIRTS

SCHOOL TROUSERS

PLUS VARIOUS ITEMS AT REDUCED PRICES

IF INTERESTED CONTACT JOHN ON
TELEPHONE 24718 or LEAVE A MESSAGE
ALTERNATIVELY email Carol.John@helanta.co.sh

RADIO GUIDE SATURDAY 10th TO FRIDAY 16th May 2014

Saturday 10th May

8am - 10am	Saturday Again	Mike Olsson
10am - 1pm	Musical Variety	Merlin George
1pm - 3pm		Sophia Bowers
3pm	LOCAL NEWS & ANNOUNCEMENTS	
3.10pm - 5pm		TBA
5pm - 7pm		Tanisha Benjamin
7pm	LOCAL NEWS & ANNOUNCEMENTS	
7.10pm - 8pm		Tanisha Benjamin
8pm - 11pm		Mike & Bernice
	ALL NIGHT PLAYLIST	

Sunday 11th May

7.30am - 9.30am		Tammy Williams
9.30am - 11.30am	Country Boy	Lucas Benjamin
11.30am - 1pm	My Kinda Country	Ray C
1pm - 3pm		John Cranfield
3pm	LOCAL NEWS & ANNOUNCEMENTS	
3.10pm - 7pm	A Taste of Country	Prudie Joshua
7pm	LOCAL NEWS & ANNOUNCEMENTS	
7.10pm - 9.30pm	Sunday Selection	Colin Peters
9.30pm	LOCAL NEWS & ANNOUNCEMENTS	
	ALL NIGHT PLAYLIST	

Monday - Friday

THOUGHT FOR THE DAY - 7am presented from New Apostolic
 LOCAL NEWS - Presented by Mike Olsson – 7.05am, 9am, 12 Noon,
 2pm, 4.15pm, 7pm & 9.30pm

WEATHER REPORT @ 8am.

ANNOUNCEMENTS - 7pm & 9.30pm
 INTERVIEW @ 8.30am REPEAT after News & Ann's @ 7pm & 9.30pm

Monday 12th

7.10am - 9am	Breakfast Show	Mike Olsson
9.05am - 1am		Donna Crowie
1pm - 5pm	Afternoon Show	Claire Bennett
5pm - 7pm		Megan Peters
7.10pm - 9.30pm		Sophie Bowers
	ALL NIGHT PLAYLIST	

Tuesday 13th

7.10am - 9am	Breakfast Show	Mike Olsson
9.05am - 12.30pm	Breakfast Show	Donna Crowie
12.30pm - 2.30pm	Afternoon show	Claire Bennett
2.30pm - 4pm		Lisa Pritchard
4pm - 5pm	Afternoon show	Claire Bennett
5pm - 7pm	Country Goldies	Ray C
7.10pm - 9.30pm	Lience to Kill	Les Baldwin
	ALL NIGHT PLAYLIST	

Wednesday 14th

7am - 11am	Breakfast Show	Donna Crowie
10am - 12 Noon	Mellow Moments	Andy Sanders
12pm - 3pm		Claire Bennett
3pm - 5pm	Downtown Radio Show	Tony Leo
5pm - 7pm		Jodie Scipio-Constantine
7.10pm - 9.30pm		Megan Crowie
	ALL NIGHT PLAYLIST	

Thursday 15th

7am - 11.30am	Breakfast Show	Donna Crowie
11.30am - 1.30pm		Liz Johnson-Idan
1:30 - 3pm	Afternoon Show	Claire Bennett
3pm - 4pm	Country Hour	Barrie Collins
4pm - 5pm	Afternoon show	Claire Bennett
5pm - 7pm		John Clement
7pm - 9.30pm	Carry On Regardless	Ian Rummery
	ALL NIGHT PLAYLIST	

Friday 16th

7am - 10am	Breakfast Show	Donna Crowie
10am - 12noon		
12Noon - 4pm	Afternoon Show	Claire Bennett
4pm - 6pm	Weekend Starter	Thomas Hickling & Friends
6pm - 7pm		John Clement
7.10pm - 9.30pm	Weird & Wonderful Show	Stuart Leo
	ALL NIGHT PLAYLIST	

PLEASE NOTE: If you like to advertise on St FM Community Radio you can Email: FM@helanta.co.sh or call 22660.

If you like to advertise in the Independent Newspaper you can Email: Independent@helanta.co.sh or call Mike on 22327.



Haven't got anything to do during the day, Do you want to become a Voluntary Presenter on St FM Community Radio? If you are interested then contact Donna or Claire on 22660 or 22488, or pop by the office or email: fm@helanta.co.sh

**Happy 16th Birthday to a
 Special Daughter
 Chrystabel Louise Greentree
 For the 12th May.**



**Have a wonderful
 day
 Love you always
 From Mum, Dad &
 Brother Isaac.**

- FOR SALE -

For sale is a 2006 model Mercedes-Benz Vito bus (2.5 Turbo Diesel) in excellent condition.
 Price - £13,000 ono.



For further information, you can contact Denzil Fowler on 23878 or email – denzilfowler@hotmail.com.



Tornado 6.5m RIB
with 2 x 90Hp Motors

£13,995



Tornado 6.5m Rigid Inflatable Boat originally commissioned in October 1999 with two Mercury 90hp 2-stroke outboards and two 110 litre on-board fuel tanks. Capable of seating 10 passengers comfortably, this boat was extensively refurbished over the period May 2013 to **March 2014** and was re-tubed by XS Ribs (son of Tornado) in toughened polyurethane (with pressure relief valves) here on Ascension Island; new tubes were 'conditioned' and UV protected in May 2014. She was completely rewired and has had brand new electrics, hydraulics and fuel lines (including new water separators) fitted. The hull has been reinforced and freshly antifouled whilst the engines have been serviced by a UK dealer in July 2012 and completely stripped and rebuilt by the Royal Navy in **January 2014**. Centre console mounted VHF radio + speaker, Lowrance GPS/depth gauge/fish finder, Garmin colour plotter and Plastimo compass, this boat is exceptionally well equipped and in excellent running condition. 'A' frame-mounted navigation lights, antenna, water proof storage bins and towing eyes, this RIB is perfect for diving, as a safety boat or simple recreational use. Many other extras included such as: galvanised roller trailer (braked), under seat storage, twin 'switchable' battery isolators (with 2 brand new batteries), float activated bilge pump, propeller guards (fitting is optional), engine spares packs, anchor, sea anchor and mooring lines. She comes complete with four stainless steel lifting points and is ready for immediate use – just add fuel! Boat cost over £19,000 and has had over 520 hours of loving attention since purchase!

TORNADO

The worlds toughest ...

Contact Mark (Asi 6336 or 3300) for more information.





Ladies Oceanic Hera
Dive Jacket (Medium)

+

15L Faber Cylinder
(12 months old and
recently serviced)

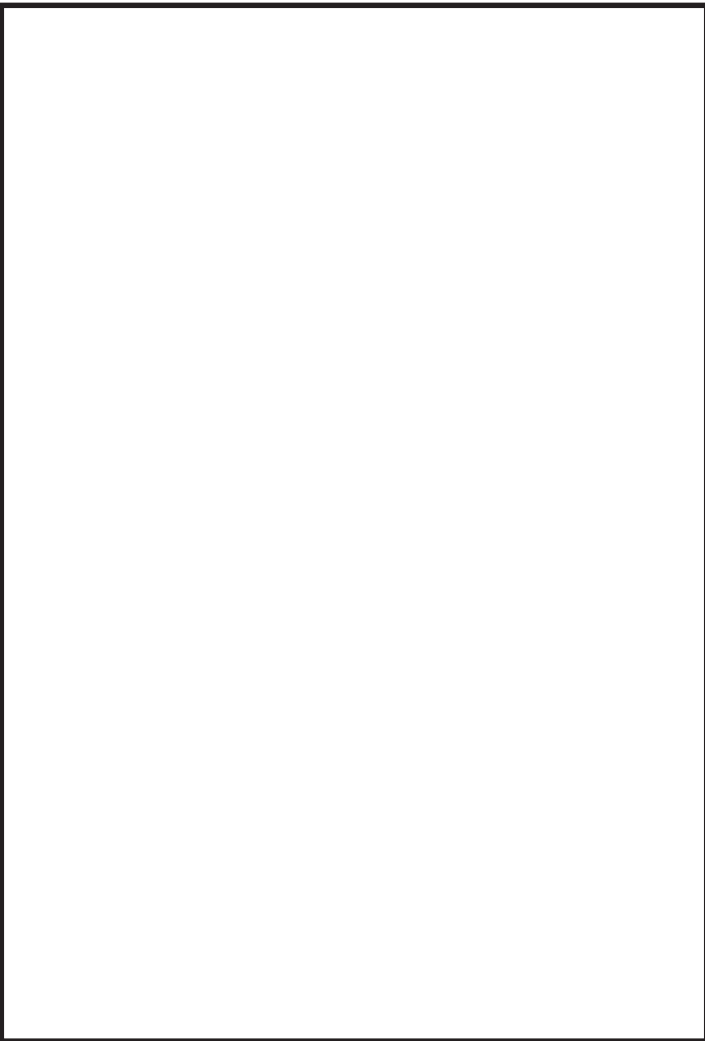
£349 (cost £649 new)

Ladies Oceanic Hera dive jacket (as new) and worn only 6 times! Just for the ladies; comfort, fit, a host of female-friendly features, and absolutely gorgeous styling. The HERA is built from the ground up for women – designed specifically around the female form with ample adjustments to make tailor is perfectly without sacrificing the features and functionality that the most discriminating divers demand. This may just be the most comfortable, best fitting buoyancy control (BC) jacket ever designed and has the following features:

- Patented and Contoured, Custom Fit Harness with multi-position shoulder straps and cummerbund, the Hera delivers individual comfort for women of all sizes;
- Reinforced shoulders, padded back pack and an adjustable position sternum strap ensure comfort and stability;
- Quick Lock & Release Integrated Weight System (with positive lock system to ensure that they stay put!);
- Fadeless 1000 Denier Cordura Construction – tough stuff!
- Depth-compensating adjustable cummerbund;
- Rear weight pockets to adjust attitude underwater;
- Large Zippered Pockets

Contact Beccie (Asi 6336) for more information.

OCEANIC[®]
INNOVATION FIRST



AGM

Jamestown Community Centre (Association) will hold its Annual General Meeting at the Centre on Monday 26th May at 8pm.

On the agenda is the Chairman's Report, the Treasurers Report of Accounts, Election of New Committee and any other business.

All Residents in Jamestown and the Briars are Welcome.

St Matthews and St Marks Ladies Guild

wish to convey sincere thanks to everyone who supported their Raffle and Easter Coffee Morning.

Proceeds were as Follows: Raffle - £454.00 and Coffee Morning - £235.36.

The winners of the Raffle were:-

- Pouffee - Lionel Crowie
- Cot Blanket - Sylvia Fowler
- Bathroom Set - Milly Henry
- Bottle Vodka - John Hoshua
- A Wall Kettle - Fr Fred
- Dinner Wine - Vera Joshua
- An Easter Egg - Lynette Styles
- A Corner Shelf - Shirley Thomas
- A Cake - Mike Arauza
- A Patchwork Quilt - Dulcie Thomas
- A Drink Set - Jill Key
- A Cutlery Set - Milly Henry
- A Vase - Jody Joshua
- A Bottle of Non-Alcoholic Wine - Kathleen Crowie
- A One Hour Harp Lesson - Hazel Moyce.

Children's BUBBLE PARTY

@Donny's 8pm - 11pm

This Saturday Night 10th May

Tuck Shop Available



Entrance Fee £1.00

(UK) 040. ars ising rty 14 adult d Rd, dz tastes UL RGE ht mail.co.uk E.

Donnys Club

N01 Hotspot On The Seafront Since 1998

FRIDAY 9th May - LIVE Performance by

BLUE MAGIC Classic Rock Band

Cruyff, Marty, Marico & Paul

Jammin LIVE this FRIDAY afternoon

During Sundowners on Deck

SATURDAY night

10th May 8.00 - 11.00 PM

Family Night Out

Children's 'BUBBLE DISCO'

In Aid of Saint FM Community Radio 8.00 - 11.00 pm

Country & Pop Music Video Mix On Deck

BOTH NIGHTS WILL END WITH A DISCO



Saturday Night Entertainment at the
White Horse Tavern -
Caribbean Night with DJ Justin C, come
& enjoy the vibes & see how good you
are at doing the LIMBO,
Dress the part & join in the fun.



SILVER HILL

**Entertainment at Silver Hill Bar this
Weekend -**

Friday open from 1.30pm to 11.30pm -
mixed tunes from the bar.

Saturday open from 3.30pm to 8pm -
Country Tunes from the bar, from 8pm
to late, Levelwood Allstars League
Champions, Celebrating the Night with
Mixed sounds by Wayne

Sunday open from 3.30pm to 10pm -
Mixed Tunes from the bar.

SANDY BAY Community Centre

SATURDAY 10 MAY 2014

Family Night OUT

ENTRANCE :

£1—ADULTS

50p—5-15 YR.



8pm until late

Mixed Music by DJ Jay

which includes a splash of the 70's, a dash of the 80's
garnished with your requests

ALSO A LIMITED SELECTION OF KARAOKE

For the daring dancers out there come along and win a free drink by
participating in some fun prize dancing

**ENJOYMENT FOR THE
WHOLE FAMILY**

The Jamestown Girl Guide Units

will be holding a sponsored scrabble
at the
Jamestown Community Centre
on
Tuesday 13th May 2014 at 7.45pm.

Anybody interested in participating
should contact Guide Leader Jill Young
for a sponsor form.