

AD 2. AERODROMES

VYNT AD 2.1 AERODROME LOCATION INDICATOR AND NAME

VYNT - NAYPYITAW / Naypyitaw International

VYNT AD 2.2 AERODROME GEOGRAPHICAL AND ADMINISTRATIVE DATA

1	<i>ARP coordinates and site at AD</i>	193724.78N 0961203.60E, Centre of runway centre line
2	<i>Direction and distance from (city)</i>	20 KM South of Naypyitaw Capital city
3	<i>Elevation/Reference temperature</i>	89.7 M/294 FT/ 33.4°C
4	<i>MAG VAR/Annual change</i>	1° W (1956) / annual change negligible.
5	<i>AD Administration, address, telephone, telefax, telex, AFS</i>	Department of Civil Aviation Naypyitaw International Airport, Naypyitaw Capital city Tel: 067 35104 Fax: 067 35104 AFS: VYNTYDYX
6	<i>Types of traffic permitted (IFR/VFR)</i>	IFR/VFR
7	<i>Remarks</i>	Nil

VYNT AD 2.3 OPERATIONAL HOURS

1	<i>AD Administration</i>	H24
2	<i>Customs and immigration</i>	H24
3	<i>ATS</i>	H24
4	<i>Remarks</i>	Nil

VYNT AD 2.4 HANDLING SERVICES AND FACILITIES

1	<i>Cargo-handling facilities</i>	Baggage Trolleys/Carts
2	<i>Fuel/oil types</i>	JP1 available on prior request
3	<i>Fuelling facilities/capacity</i>	Nil
4	<i>Remarks</i>	Nil

VYNT AD 2.5 PASSENGER FACILITIES

1	<i>Hotels</i>	Numbers of Hotels available in city
2	<i>Restaurants</i>	Available at airport compound
3	<i>Transportation</i>	Taxi service available at airport
4	<i>Medical facilities</i>	Nil
5	<i>Bank and Post Office</i>	Available in city
6	<i>Tourist Office</i>	-
7	<i>Remarks</i>	Nil



VYNT AD 2.6 RESCUE AND FIRE FIGHTING SERVICES

1	<i>AD category for fire fighting</i>	CAT 8
2	<i>Rescue equipment</i>	CAT 8
3	<i>Capability for removal of disabled aircraft</i>	-
4	<i>Remarks</i>	Nil

VYNT AD 2.7 SEASONAL AVAILABILITY - CLEARING

There is no requirement for clearing as the aerodrome is available throughout the year.

VYNT AD 2.8 APRONS, TAXIWAYS AND CHECK LOCATIONS DATA

1	<i>Apron surface and strength</i>	Surface: Concrete Strength: 395,987 kg
2	<i>Taxiway width, surface and strength</i>	Nil
3	<i>Altimeter checkpoint location and elevation</i>	Nil
4	<i>VOR/INS checkpoints</i>	Nil
5	<i>Remarks</i>	Nil

VYNT AD 2.9 SURFACE MOVEMENT GUIDANCE AND CONTROL SYSTEM AND MARKINGS

1	<i>Use of aircraft stand ID signs, TWY guide lines and visual docking/parking guidance system of aircraft stands.</i>	Guide lines at apron.
2	<i>RWY and TWY markings and LGT</i>	RWY: Designation, THR, Centre line, aiming point, edge RWY: edge, THR and End light
3	<i>Stop bars</i>	Nil
4	<i>Remarks</i>	Nil

VYNT AD 2.10 AERODROME OBSTACLES

In approach / TKOF areas			In circling area and at AD		Remarks
1			2		3
RWY NR/Area affected	Obstacle type Elevation Markings/LGT	Coordinates	Obstacle type Elevation Markings/LGT	Coordinates	
a	b	c	a	b	
RWY16 APCH RWY34 TKOF	Tower 113 M/371 FT LGT	193718.07N 0961152.67E	Pagoda		BRG 355° from ARP
	Obstacle 296 M/971 FT LGT	192940.92N 0961109.30E	PHO-Zaung Hill Top		BRG 350° from ARP
			Thet-Phyu Hill Top		BRG 180° from ARP
			Easten Mountain Range		East side of Aerodrome

VYNT AD 2.10 AERODROME OBSTACLES

In approach / TKOF areas			In circling area and at AD		Remarks
1			2		3
RWY NR/Area affected	Obstacle type Elevation Markings/LGT	Coordinates	Obstacle type Elevation Markings/LGT	Coordinates	
a	b	c	a	b	
RWY16 APCH RWY34 TKOF	Tower 113 M/371 FT LGT	193718.07N 0961152.67E	Pagoda		BRG 355° from ARP
	Obstacle 296 M/971 FT LGT	192940.92N 0961109.30E	PHO-Zaung Hill Top		BRG 350° from ARP
			Thet-Phyu Hill Top		BRG 180° from ARP
			Easten Mountain Range		East side of Aerodrome

VYNT AD 2.11 METEOROLOGICAL INFORMATION PROVIDED

1	Associated MET Office	H24
---	-----------------------	-----

VYNT AD 2.12 RUNWAY PHYSICAL CHARACTERISTICS

Designations RWY NR	TRUE & MAG BRG	Dimensions of RWY (M)	Strength (PCN) and surface of RWY and SWY	THR coordinates	THR elevation and highest elevation of TDZ of precision APP RWY
1	2	3	4	5	6
16	158°	3657 x 61	PCN 56/R/A/W/T Concrete	193819.61N 0961139.40E	89.7 M
34	338°	3657 x 61	PCN 56/R/A/W/T Concrete	193629.96N 0961227.89E	89.7 M
Slope of RWY-SWY	SWY dimensions(M)	CWY dimensions(M)	Strip dimensions(M)	OFZ	Remarks
7	8	9	10	11	12
0.0%	61 x 61	Nil	4267 x 305	Nil	Nil

VYNT AD 2.13 DECLARED DISTANCES

RWY Designator	TORA (M)	TODA (M)	ASDA (M)	LDA (M)	Remarks
1	2	3	4	5	6
16	3657	3657	3718	3657	Nil
34	3657	3657	3718	3657	

VYNT AD 2.14 APPROACH AND RUNWAY LIGHTING

RWY Designator	APCH LGT type LEN INTST	THR LGT colour WBAR	VASIS (MEHT) PAPI	TDZ LGT LEN	RWY Centre Line LGT Length, spacing, colour, INTST	RWY edge LGT LEN, spacing, colour INTST	RWY End LGT colour WBAR	SWY LGT LEN (M) colour	Remarks
1	2	3	4	5	6	7	8	9	10
16	Precision Approach CAT-1	Green	PAPI 3° Left 457M from THR RWY 16	Nil	Nil	Bi-directional rised white/amber edge lights	Red	Nil	Nil
34	SALS	Green	PAPI 3° Left 457M from THR RWY 34	Nil	Nil	Bi-directional rised white/amber edge lights	Red	Nil	

VYNT AD 2.15 OTHER LIGHTING, SECONDARY POWER SUPPLY

1	ABN/IBN location, characteristics and hours of operation	ABN: Control Tower W/G EV 2.5 SEC IBN: Nil
2	LDI location and LGT Anemometer location and LGT	Nil
3	TWY edge and centre line lighting	-
4	Secondary power supply/switch-over time	15 SEC
5	Remarks	Nil

VYNT AD 2.16 HELICOPTER LANDING AREA

Nil

VYNT AD 2.17 ATS AIRSPACE

1.Naypyitaw Aerodrome Traffic Zone

1	Designation and lateral limits	Naypyitaw ATZ, radius 5 NM centred at 193724.78N 0961203.60E (ARP)
2	Vertical limits	GND to 1500 FT
3	Airspace classification	C
4	ATS unit call sign Language(s)	Naypyitaw Tower English
5	Transition altitude	9 000 FT
6	Remarks	Nil

VYNT AD 2.19 RADIO NAVIGATION AND LANDING AIDS

Type of aid, CAT of ILS/MLS	ID	Frequency	Hours of operation	Site of transmitting antenna coordinates	Elevation of DME transmitting antenna	Remarks
1	2	3	4	5	6	7
DVOR/DME	NPT	113.7 MHz CH 84X	H24	193735.6N 0961144.1E	DME co-located with VOR	Coverage 100 NM Em: A9W
NDB	NT	390 kHz	HO	193757.20N 0961204.04E	-	Coverage: 80 NM Em: NON/A2A
ILS CAT.I/LLZ	INPT	110.1 MHz	HO	193620.22N 0961230.89E	-	Coverage 12 NM RWY16 Em: R3E
ILS CAT.I/GP/DME	INPT	334.4 MHz CH 38X	HO	193809.47N 0961139.19E	DME Co-located with GP	Glide slope: 3° Coverage 10 NM RWY 16 Em: R3E

VYNT AD 2.20 LOCAL TRAFFIC REGULATIONS

1. AIRPORT REGULATIONS

Naypyitaw International Airport complies Manual of Aerodrome Standards (MOAS). This Aerodrome Standards include the following:

- a) Physical characteristics
- b) Obstacle restriction and limitation
- c) Visual aids provided by aerodrome markings, markers and signs
- d) Aerodrome lighting
- e) Operating standards for certified aerodromes
- f) Aerodrome facilities

2. TAXIING TO AND FROM STANDS

Arriving aircraft will be allocated a stand number by the TWR or GMC. General aviation aircraft will have to use the general aviation parking area. Assistance from the "FOLLOW ME" vehicles can be requested via TWR or SMC.

Departing IFR flights shall contact the GMC to obtain ATC clearance before commencing taxiing. Request for ATC clearance may take place at the earliest 10 minutes prior to engine start-up and the frequency 121.9 MHz is to be used.

3. PARKING AREA FOR SMALL AIRCRAFT

General aviation aircraft shall be guided by marshallers to the parking area for small aircraft.

4. PARKING AREA FOR HELICOPTER

Helicopter will always be guided by a marshaller on the stand.

5. HELICOPTER TRAFFIC - LIMITATION

Non-scheduled public air traffic with helicopters is permitted only after prior from the Department of Civil Aviation Any contact concerning the above shall be made via the handling company or directly to the airport office during the hours of service and, if possible, not later than the day before the flight is to be carried out.

Any request for approval of traffic shall contain the following information:

- a) Owner/operator;
- b) Type of helicopter, registration / call sign
- c) Date, arrival time/departure time, destination(s)

Furthermore other details relevant to the evaluation of the request shall be given as required.

6. REMOVAL OF DISABLE FROM RUNWAYS

When an aircraft is wrecked on a runway, it is the duty of the owner or user of such aircraft to have it removed as soon as possible. If a wrecked aircraft is not removed from the runway as quickly as possible by the owner or user, the aircraft will be removed by the aerodrome authority at the owner's or user's expense.

VYNT AD 2.21 NOISE ABATEMENT PROCEDURES

Nil

VYNT AD 2.22 FLIGHT PROCEDURES

Nil

VYNT AD 2.23 ADDITIONAL INFORMATION

Nil

VYNT AD 2.24 CHARTS RELATED TO NAYPYITAW INTERNATIONAL AIRPORT

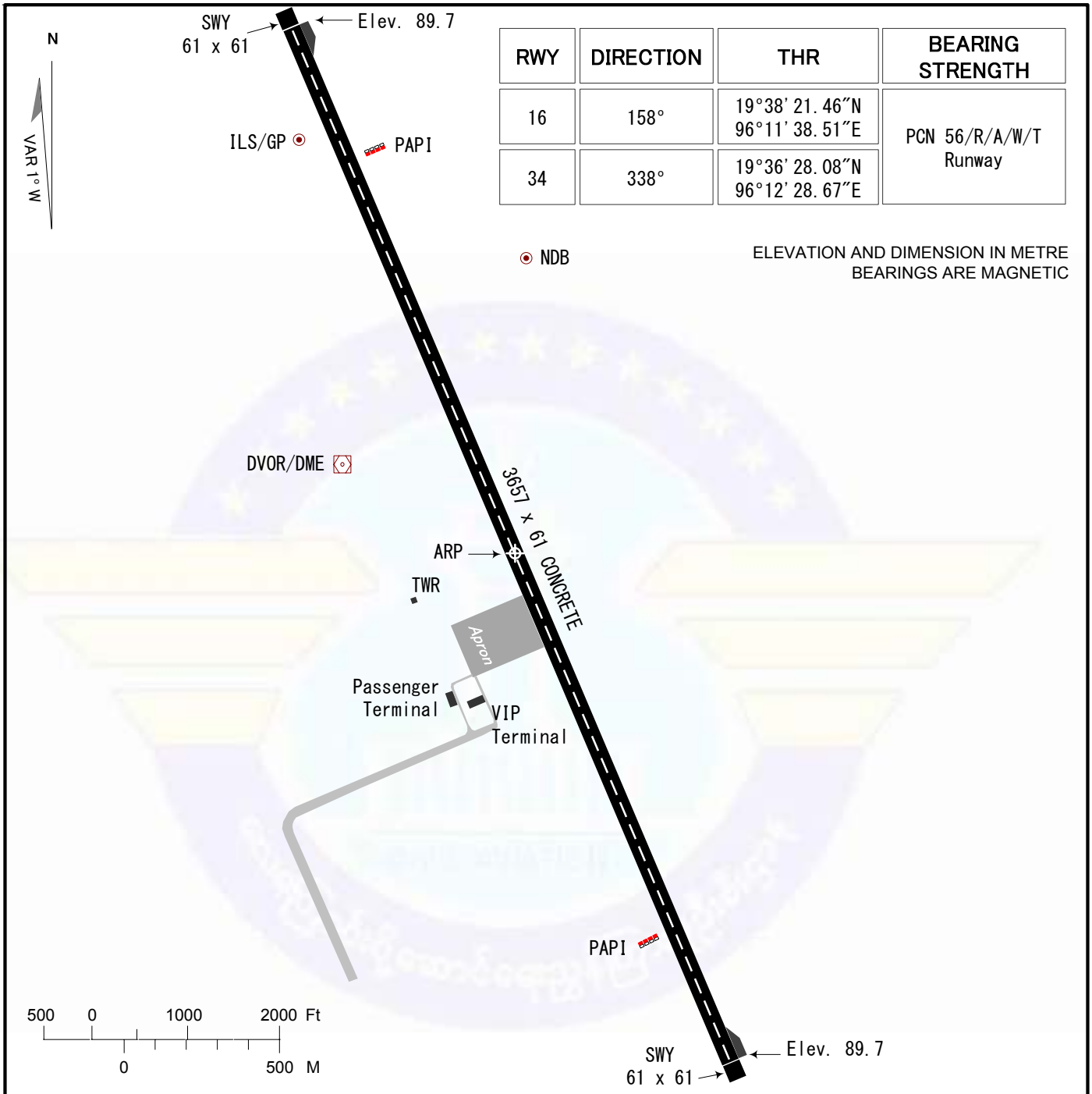
<i>Aerodrome Chart - ICAO</i>		
<i>Instrument Approach Chart - ICAO</i>	<i>RWY 16</i>	<i>ILS/DME</i>
<i>Instrument Approach Chart - ICAO</i>	<i>RWY 16</i>	<i>DVOR/DME</i>
<i>Instrument Approach Chart - ICAO</i>	<i>RWY 34</i>	<i>DVOR/DME</i>
<i>Instrument Approach Chart - ICAO</i>	<i>RWY 16</i>	<i>NDB</i>
<i>Instrument Approach Chart - ICAO</i>	<i>RWY 34</i>	<i>NDB</i>

AERODROME CHART - ICAO

19°37' 24. 78"N
96°12' 03. 60"E
AD ELEV 89.7 M

TWR 118.7

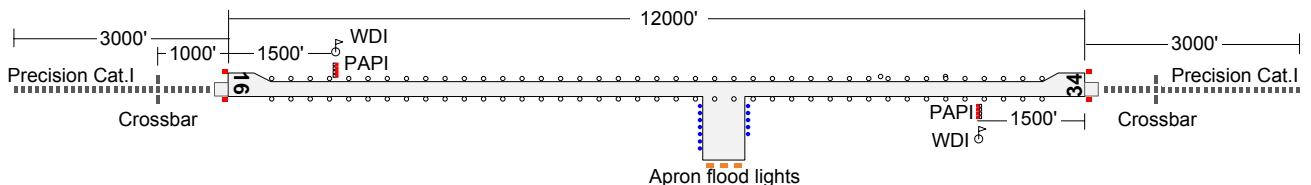
NAYPYITAW/
Naypyitaw



MARKING AIDS RWY 16/34



LIGHTING AIDS RWY 16/34

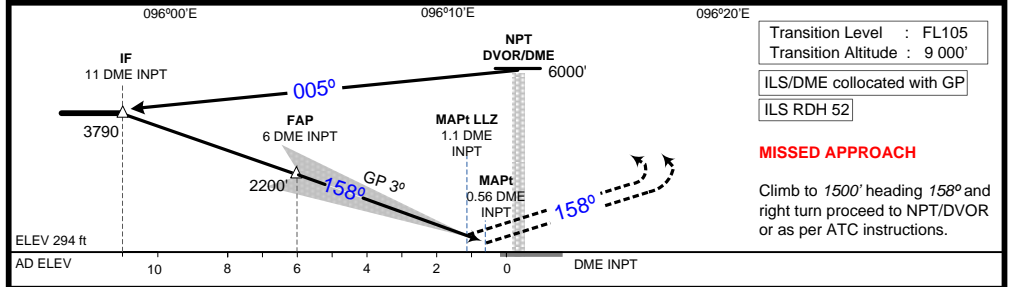
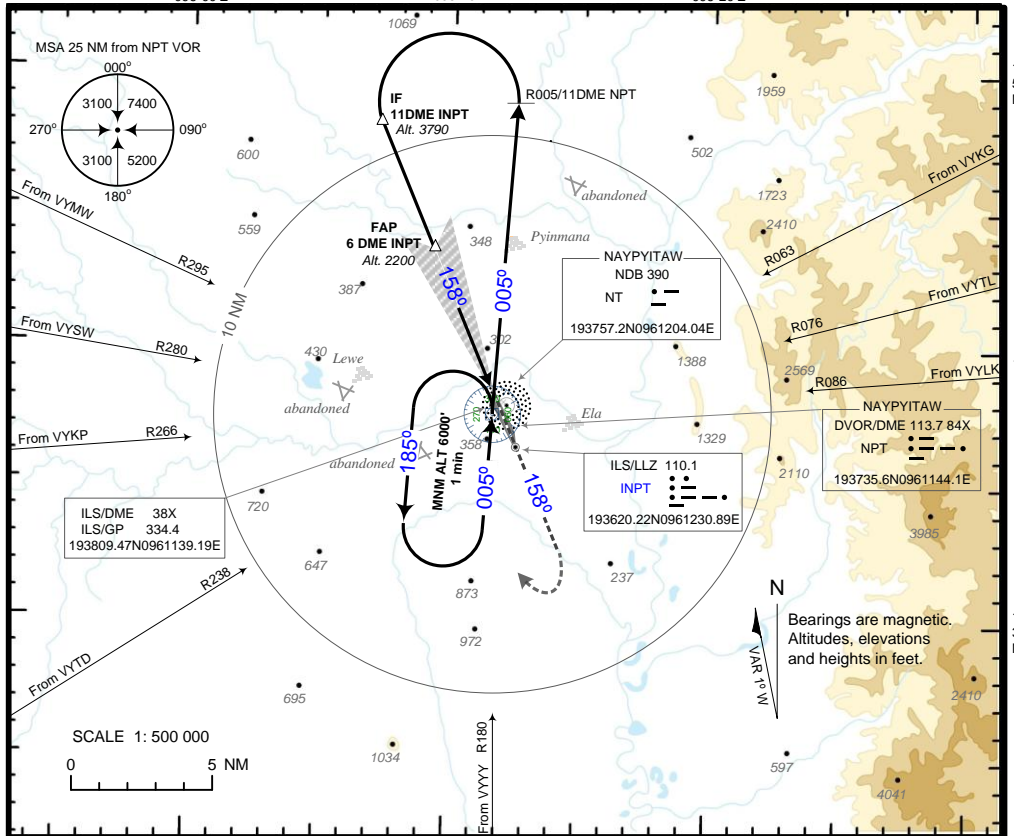


**INSTRUMENT
APPROACH
CHART - ICAO**

AERODROME ELEV - 294 ft
HEIGHTS RELATED TO AD ELEV
19°37'24.78"N 096°12'03.60"E

TWR 118.7
APP 119.7

**NAYPYITAW/Naypyitaw
INPT ILS/DME
RWY 16**



Transition Level : FL105
Transition Altitude : 9 000'
ILS/DME collocated with GP
ILS RDH 52

MISSED APPROACH
Climb to 1500' heading 158° and right turn proceed to NPT/DVOR or as per ATC instructions.

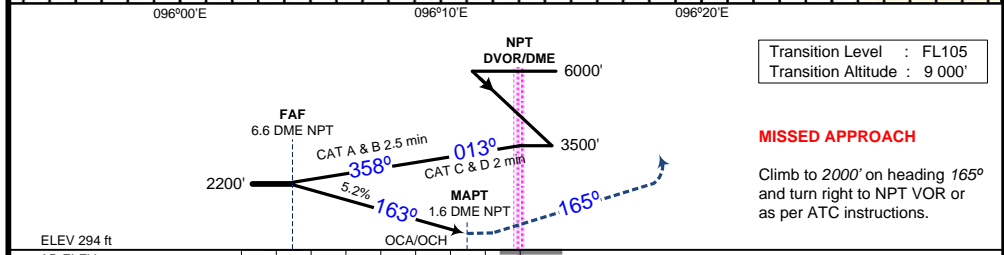
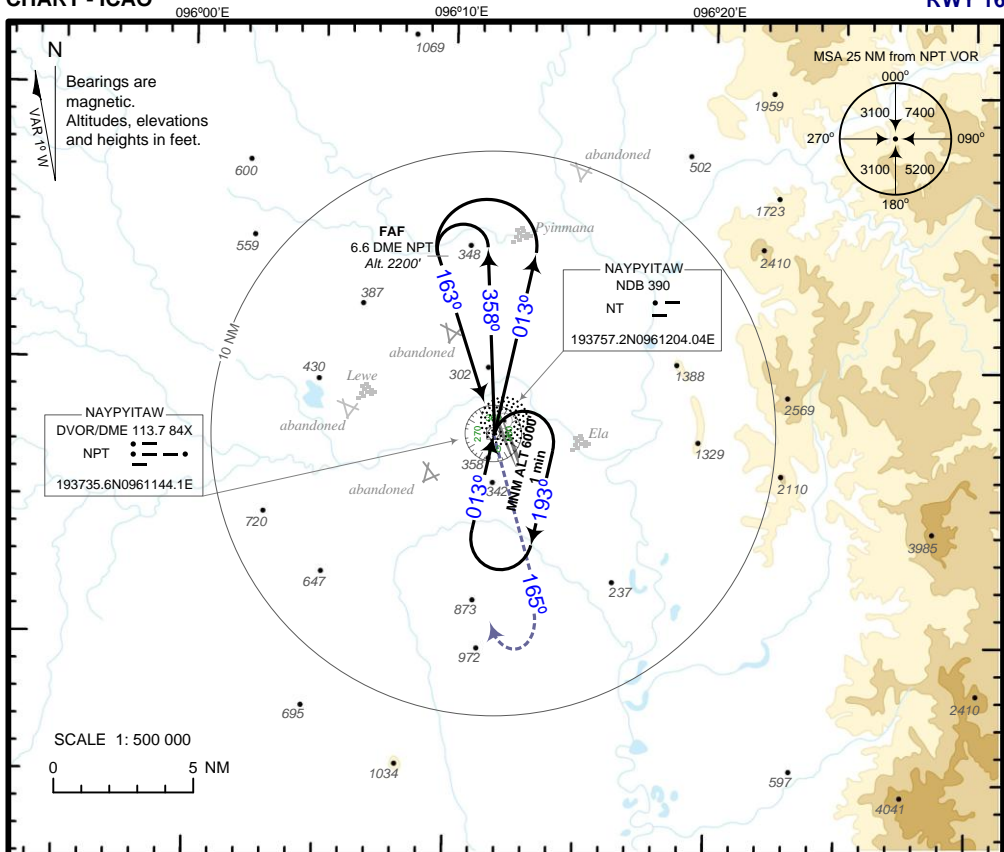
	OCA (OCH)							
	A		B		C		D	
Category of aircraft	430(140)		440(150)		450(160)		460(170)	
Straight - in (CAT I ILS)								
Straight - in (LLZ only)								
Circling (West of RWY only)			620(330)		900(610)			
Distance from DME INPT	1 DME		2 DME		3 DME		4 DME	
Altitude (Height)	610(310)		930(630)		1250(950)		1560(1270)	
Ground Speed (knots)	70 kt		90 kt		120 kt		150 kt	
FAP-MAPt 5.44 NM (min:sec)	4:40		3:38		2:44		2:11	
Rate of Descend (ft/min)	370		480		635		795	
							2200(1900)	
							180 kt	
							1:49	
							955	

**INSTRUMENT
APPROACH
CHART - ICAO**

AERODROME ELEV - 294 ft
HEIGHTS RELATED TO AD ELEV
19°37'24.78"N 096°12'03.60"E

TWR 118.7
APP 119.7

**NAYPYITAW/Naypyitaw
NPT DVOR/DME
RWY 16**



ELEV 294 ft
AD ELEV

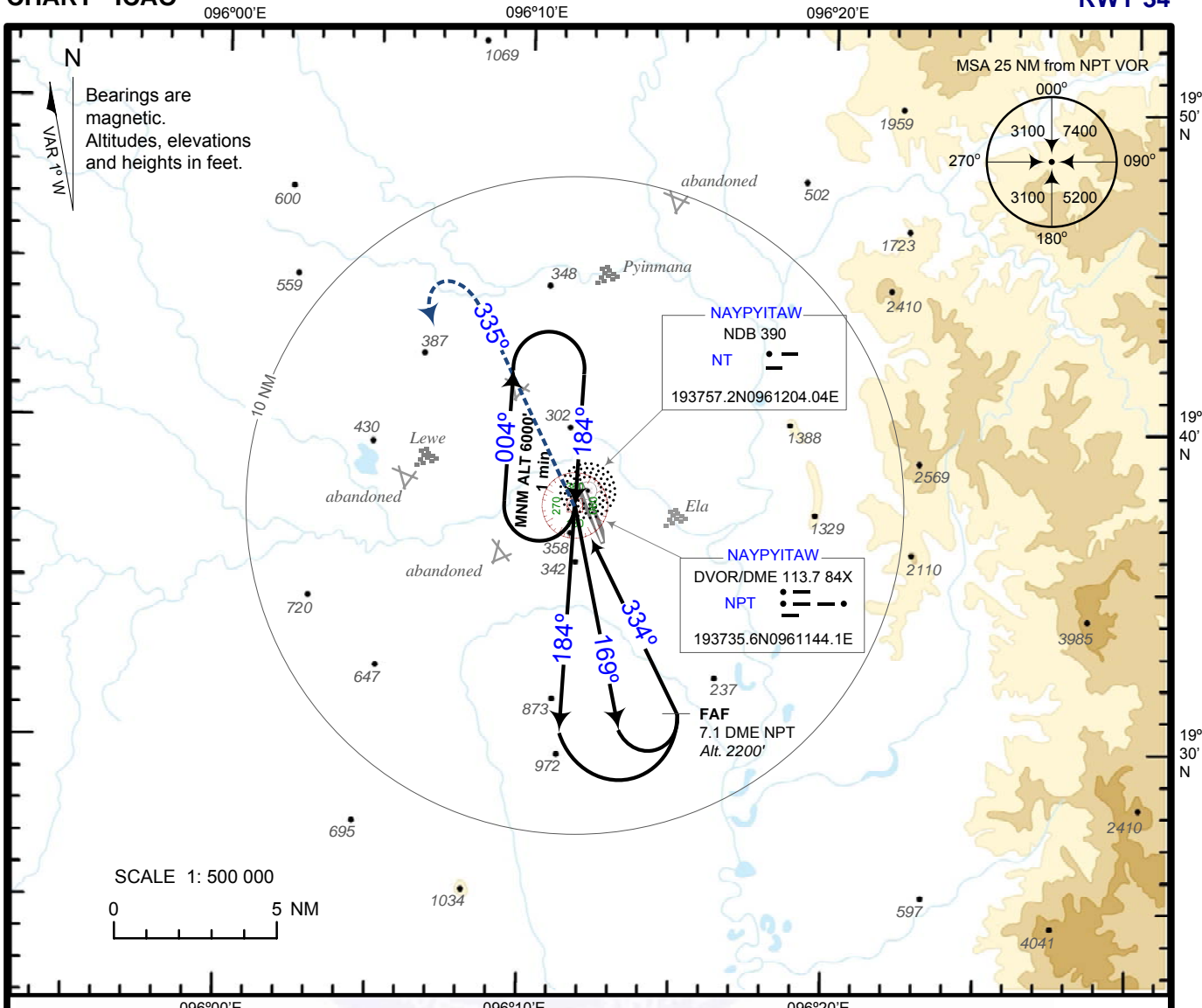
	OCA (OCH)			
	A	B	C	D
Category of aircraft				
Straight - in	620(330)			
Circling (West of Runway only)	800(510)		900(610)	
Distance from DME NPT	6 DME	5 DME	4 DME	3 DME
Altitude (Height)	2020(1730)	1710(1410)	1390(1090)	1070(780)
Speed (knots)	90	120	150	180
FAF-MAPt 5 NM (min:sec)	3:20	2:30	2:00	1:40
Rate of Descend (ft/min)	480	635	795	955

**INSTRUMENT
APPROACH
CHART - ICAO**

AERODROME ELEV - 294 ft
HEIGHTS RELATED TO AD ELEV
19°37'24.78"N 096°12'03.60"E

TWR 118.7
APP 119.7

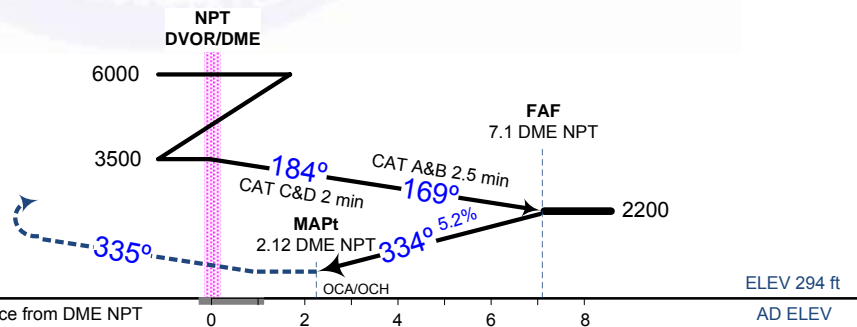
**NAYPYITAW/Naypyitaw
NPT DVOR/DME
RWY 34**



Transition Level : FL105
Transition Altitude : 9 000'

MISSED APPROACH

Climb to 2000' heading 335° and turn left to NPT VOR or as per ATC instructions.



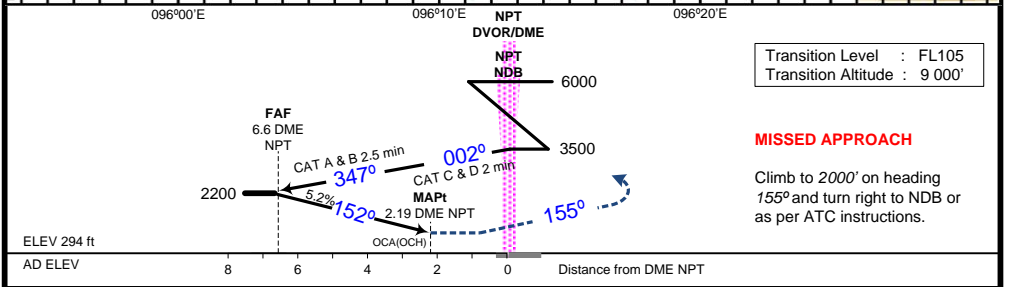
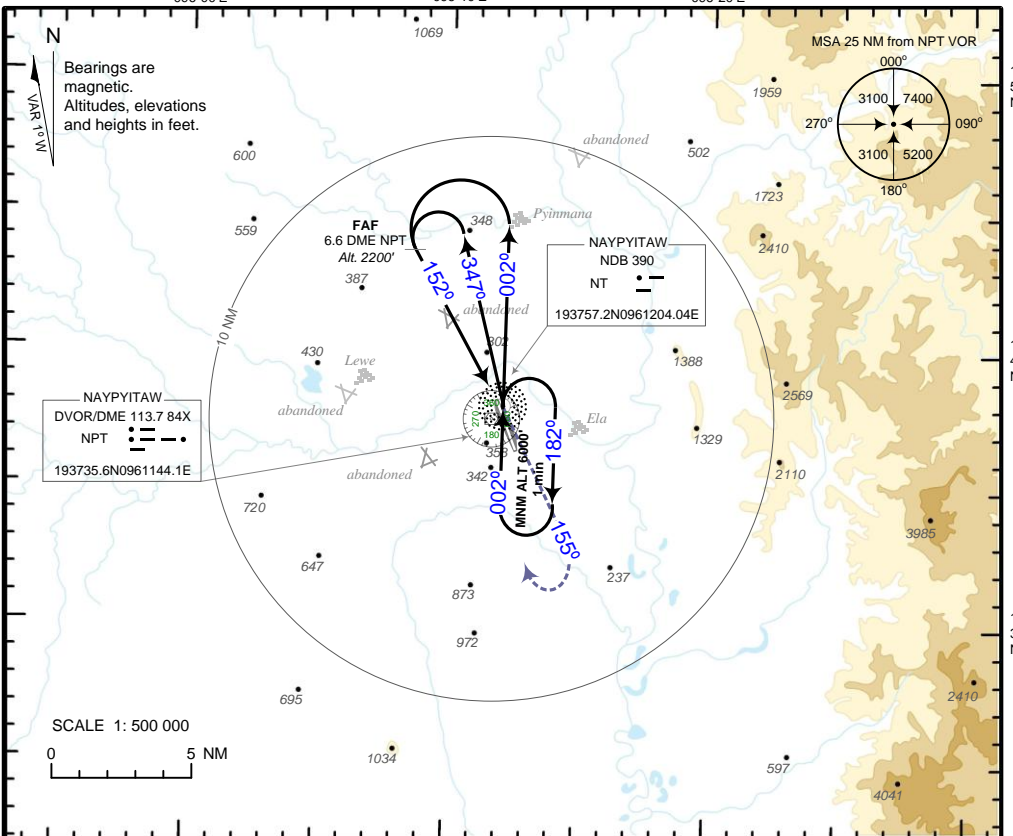
Category of aircraft	OCA (OCH)			
	A	B	C	D
Straight - in	620(330)			
Circling (West of Runway only)	1270(980)		1370(1080)	
Distance from DME NPT	6 DME	5 DME	4 DME	3 DME
Altitude (Height)	1860(1570)	1550(1250)	1230(930)	910(620)
Speed (knots)	90 kt	120 kt	150 kt	180 kt
FAF-MAPT 4.98 NM (min:sec)	3:20	2:30	2:00	1:40
Rate of Descend (ft/min)	480	635	795	955

**INSTRUMENT
APPROACH
CHART - ICAO**

AERODROME ELEV - 294 ft
HEIGHTS RELATED TO AD ELEV
19°37'24.78"N 096°12'03.60"E

TWR 118.7
APP 119.7

**NAYPYITAW/Naypyitaw
NPT NDB/DME
RWY 16**



	OCA (OCH)			
	A	B	C	D
Category of aircraft				
Straight - in	810(510)			
Circling (West of Runway only)	810(510)		910(610)	
Distance from DME NPT	6 DME	5 DME	4 DME	3 DME
Altitude (Height)	2020(1730)	1710(1410)	1390(1090)	1070(780)
Speed (knots)	90 kt	120 kt	150 kt	180 kt
FAF-MAPT 4.41 NM (min:sec)	2:57	2:13	1:46	1:29
Rate of Descend (ft/min)	480	635	795	955

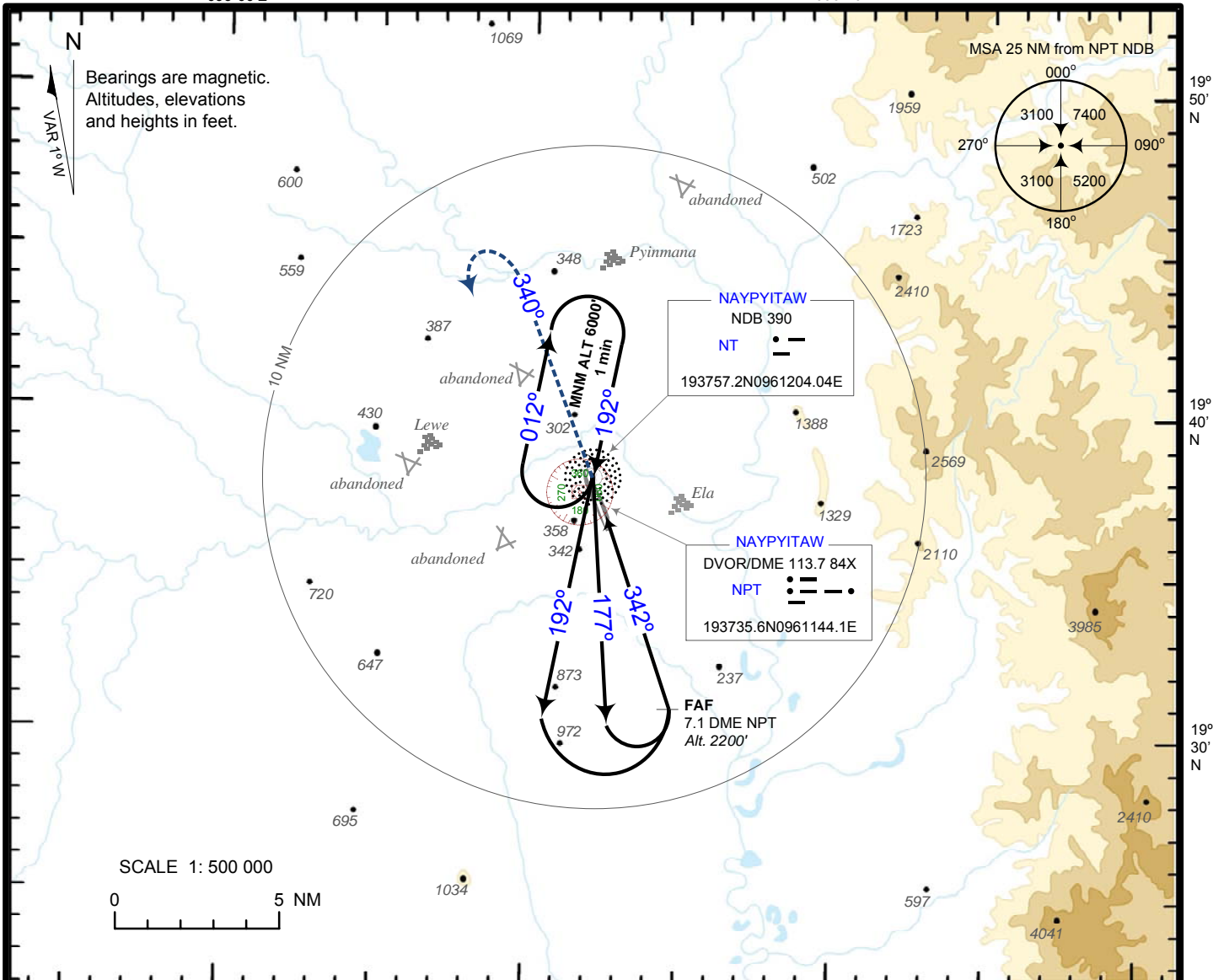
**INSTRUMENT
APPROACH
CHART - ICAO**

AERODROME ELEV - 294 ft
HEIGHTS RELATED TO AD ELEV
19°37'24.78"N 096°12'03.60"E

TWR 118.7
APP 119.7

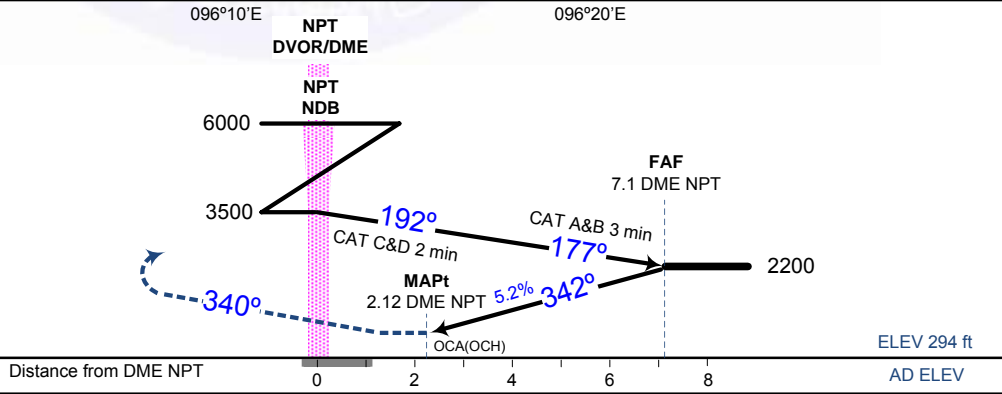
**NAYPYITAW/Naypyitaw
NPT NDB/DME
RWY 34**

096°00'E 096°10'E 096°20'E



Transition Level : FL105
Transition Altitude : 9 000'

MISSED APPROACH
Climb to 2000' heading 340° and turn left to NPT NDB or as per ATC instructions.



OCA (OCH)				
Category of aircraft	A	B	C	D
Straight - in	620(330)			
Circling (West of Runway only)	1270(980)		1370(1080)	
Distance from DME NPT	6 DME	5 DME	4 DME	3 DME
Altitude (Height)	1860(1570)	1550(1250)	1230(930)	910(620)
Speed (knots)	90 kt	120 kt	150 kt	180 kt
FAF-MAPt 4.98 NM (min:sec)	3:20	2:30	2:00	1:40
Rate of Descend (ft/min)	480	635	795	955