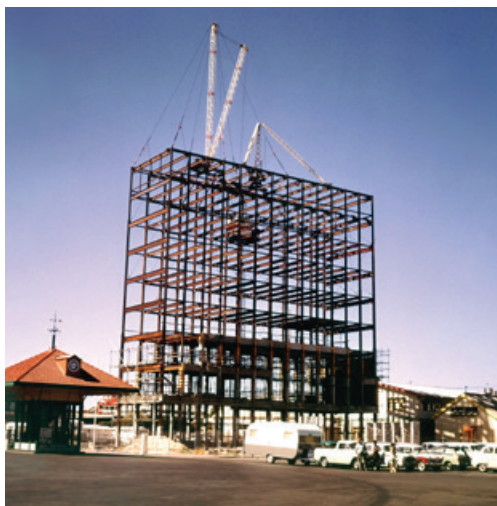


## Historic photos mark 50<sup>th</sup> birthday for iconic building



Construction of the administration building in 1962



The epitome of modernity in 1964

*Fremantle Ports' iconic administration building, standing high and proud on Victoria Quay, was the epitome of everything modern when it was opened on 5 March 1964, as is illustrated by an historic photo display opening to the public on 7 March.*

Designed by architects Hobbs, Winning and Leighton in the international style of the time and built by A T Brine and Sons Ltd, the building embodied innovative architectural techniques that made it a benchmark for energy efficiency and comfort.

The 11-storey building was built to accommodate the then Fremantle Harbour Trust's existing staff in one building, relocating from eight buildings around the wharf area.

It boldly countered the existing character and scale of the wharf and its buildings and signified a radical modern change in the port's image and operation.

Architectural features included a ground-floor folded roof (first in Australia) of pre-stressed concrete units, exterior tiling to reduce maintenance in the salt-laden atmosphere, east-west orientation (thermal design) for natural light and heating control, and reversible anodised aluminum-framed windows for ease of cleaning.

The building's air-conditioning uses water drawn from deep bores below the basement, a system designed to reduce costs.

The signal station was fitted out with the latest navigational and communication equipment. Due to the building's height and position, the staff had an unobstructed view of the entire Inner and Outer Harbours and channels for the first time. (The old signal station is on Cantonment Hill.)

The excellence of its original design and the good use of modern materials have meant that the building remains fit for its original primary functions of housing the port's main control tower and the administrative facilities.

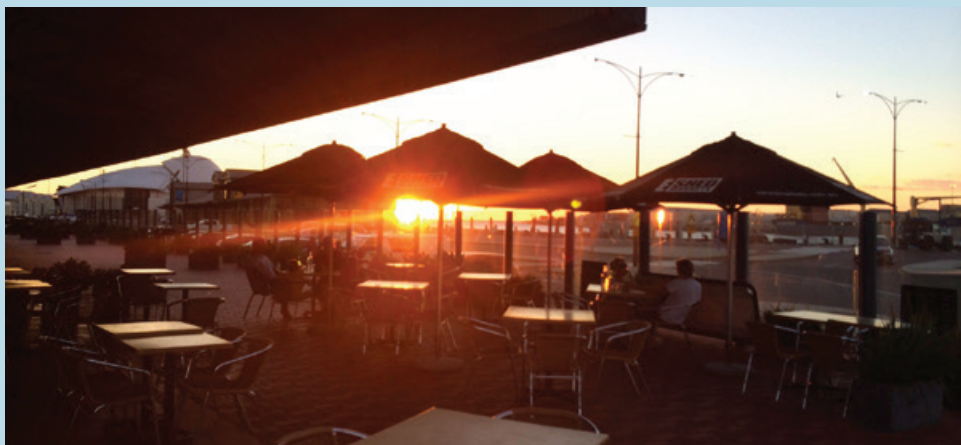
The foyer features a Howard Taylor mural of the Roman god Portunus riding a dolphin to guide ships into harbour; the original tessellated wall tiles and a beautiful jarrah and wandoo parquet floor.

**What:** Fremantle Ports' administration building 50th birthday historic photo display

**Where:** Administration building foyer, Victoria Quay

**When:** 8am-4.30pm Mondays to Fridays from 7 March until the end of May

## Victoria Quay Night Market starts Thursday 13 March



Fremantle Port's Victoria Quay will be the setting for an exciting range of international food stalls cooking up a storm from 5pm each Thursday from 13 March.

On the verandah, car park and lawns between E Shed and B Shed, the night market will have food and entertainment within the fantastic setting of the working port.

Stroll along the waterfront, sample delicious cuisines under the stars, relax with friends and family, and soak up the ambience in a community atmosphere.

A diversity of entertainment will include local musicians, dancers and silent disco/v-jaying.

Cuisines will include Latino, Malaysian, Moroccan, African and Spanish from stalls and a fleet of food trucks.

**What:** Victoria Quay Night Market

**Where:** Between E Shed and B Shed

**When:** 5pm to 9pm on Thursdays (13 March - 17 April)



**VICTORIA QUAY**  
FREMANTLE

### IN THIS ISSUE:

Support for Fremantle and Coogee swims (see page 4)

Dolphin escort for a queen (see page 5)



# Fender upgrade for operational berths on Victoria Quay



Current condition of E Berth fender

*A wharf upgrade that started recently at Victoria Quay will involve installation of a new fender system at E Berth and part of D Berth.*

Work will include removing the existing 290-metre fender system; driving new steel piles into the harbour; installing concrete planks, beams, fabricated steel items, new rubber fenders and wharf furnishings; and reinstating the deck.

The piling component will occur intermittently over the next eight months.

The timber fender system at E Berth was originally constructed in 1927, with the last major maintenance completed in 1995.

Due to the structure's age and condition, a total replacement is now required. In 1997, almost two-thirds of D Berth's timber fender was replaced and upgraded and the remaining third, adjacent to E Berth, now also requires replacement.

D and E berths are used for cargo handling and vessel repairs.

The new fender system will reduce the stresses imposed on the existing wharf by the larger ships and will need less wharf maintenance. The system can be incorporated in any future new wharf structure and will enable improved vessel berth positioning, especially for some smaller ships.

The wharf upgrading will take 10 months to complete. Similar work was undertaken at Berth 2 on North Quay about two years ago.

## Fairy terns at Rous Head

Fairy terns have been nesting in sand at Rous Head on the area that was reclaimed as part of Fremantle Harbour deepening in 2010. While most of the land is being developed for port-related purposes to support the container trade, an area is being developed for public open space and a fairy tern nesting area. Recently, fairy terns took advantage of the wide open spaces of sand that have not been developed yet. Fremantle Ports is providing the fairy tern nesting area with expert advice from an ornithologist from the WA Museum.



A fairy tern flies towards the photographer for a closer look



Fremantle Ports' John Malaga (right) and landscaping contractor Garth Preece built some small temporary shade structures for the fairy terns.



Project Supervisor Roger Reeves on site at the fender upgrade

## Workplace first aid training benefits community

Fremantle Ports Manager Port Safety Martin Anderson was able to put his first aid training to use driving to work recently.

Early one morning he saw an elderly man collapse on a Fremantle corner.

Martin stopped, along with another driver, and used his training to apply first aid until a doctor riding to Fremantle Hospital appeared and took over, and an ambulance turned up.

Martin said the training he had received at work gave him the knowledge and confidence to provide assistance.

Fremantle Ports electrician Paul Underwood was also able to provide first aid one morning riding to work when another cyclist was hit by a car. Paul had also received first aid training at Fremantle Ports.



## VQ businesses bring Christmas joy to many

*A consortium of Fremantle Ports' tenants on Victoria Quay, with help from Fremantle Ports, ran two giving-trees to collect Christmas gifts for charities in December.*

One box containing toiletries was delivered to St Patrick's Community Care Centre in Fremantle following a crisis call. The other, full of toys and goodies, was delivered to the Fremantle Wesley Mission.

Thank you to members of the public, the Victoria Quay businesses and Fremantle Ports staff who helped to make it a memorable Christmas for so many people.

## QR codes for VQ

Visitors to Victoria Quay are now able to access instant information about places of interest through their smartphones. Fremantle Ports has sponsored and is installing eight small plaques containing QR codes.

When a smartphone with the free QR app scans one of the plaques, information from the corresponding Wikipedia page pops up on the phone. The eight plaques add to about 100 installed around Fremantle as part of the Fremantle Society-initiated Freopedia project.

The Fremantle Ports plaques are for the administration building, the submarine HMAS Ovens (at the Maritime Museum), the CY O'Connor statue, the 1919 riots near C Shed, Fremantle Harbour, Victoria Quay, E Shed Markets and the Fremantle Passenger Terminal.

Local photographer Roel Loopers was the driving force behind the Freopedia project during his time as society president, and Fremantle BID (Business Improvement District) provided initial project funding.

QR (quick response) code is the trademark for a type of matrix barcode first designed for the Japanese automotive industry.



*The QR code plaque for Fremantle Harbour on signage near B Shed*



*From left: Nico Prestini, Denis Padovan and Brianna Carver, all from B Shed Cafe, and Anne-Marie Archer, from Leeuwin Ocean Adventure, with some of the donations*

## Hola, B Shed

Mexican beach party! Rustic colourful furniture and rugs, spiky plants, delicious South American food, music, a waterside setting. B Shed was transformed recently for an industry function held by food and beverage company Lion. The old shed proved once again that it is a great multi-purpose venue oozing authenticity and inspiring event organisers to create something unique. Organisers said they liked the space, the architecture, the waterside location, the easy parking, the great natural light and 'natural' air-conditioning.





# Support for Fremantle and Coogee swims



Fremantle Ports is supporting two community swimming events this summer. The Fremantle Ports Swim Thru, held in December by the Freo Fins (Fremantle Masters Swimming Club), attracted 240 swimmers to South Beach with funds raised benefiting St Patrick's Community Care Centre and Fremantle Street Doctor. City of Cockburn Coogee Jetty to Jetty, organised by Cockburn Masters Swimming Club, will be held on 9 March.

Left: Fremantle Ports' General Manager Asset and Infrastructure Management Steve Wade presents fastest female Jaime Bowler with her prize



Swimmers take to the water for the Fremantle Ports Swim Thru (photos courtesy [www.johnnphotos.com](http://www.johnnphotos.com))

# How to get a neck-warmer to an icebreaker

Work at Fremantle Ports is not just about containers, bulk cargoes and cruise ships – it's also very much about people.

Tokyo resident Masayo Horiguchi wanted to send a neck-warmer to her boyfriend who was on the Japanese icebreaker *Shirase*, which visits Fremantle in November on its way to Antarctica.

"My boyfriend forgot to bring his neck-warmer from Japan, so please pass it to him and tell him it is with my love," Masayo wrote to Fremantle Ports.

Fremantle Ports organised to get the gift to her boyfriend via *Shirase's* shipping agent. It arrived in Fremantle the day before he sailed. Masayo was then moved to visit Fremantle for a week and was very impressed.



Masayo Horiguchi (inset) and *Shirase*

"I really enjoyed Freo," she wrote. "I went to Cicerello's and Sail and Anchor pub twice and I went to the market on weekends. Fremantle people are very kind and polite. Scenery is beautiful, delicious meals, nice people. Freo is the best, I feel."



# Women in the operational pipeline

*The issue of women creating barriers for other women in the workplace was discussed at a special networking event hosted by Fremantle Ports on 14 February.*

The National Association of Women in Operations (NAWO) event featured guest speaker Vanessa Vershaw, who is an organisational psychologist, author and coach.

NAWO's purpose is 'to develop the pipeline of women who work in operational businesses or functions as they progress through to business leadership and executive roles'.

More information: [www.nawo.org.au](http://www.nawo.org.au)



Fremantle Ports' Chief Finance Officer/General Manager Commercial and Corporate Services Tanvi Haria (left) with Natasha Wilson (centre), of Bevchain Logistics, and Athanae Lucev, of Green Smoothie Co.



Guest speaker Vanessa Vershaw (2nd from right) with (from left) Georgie Kelly, Vanessa Carn and Alison Coventry, all of Fremantle Ports

# COMING SOON TO VICTORIA QUAY...

## Inside: Life in Children's Homes and Institutions

An exhibition based on the experiences of people who grew up in children's homes, orphanages and other 'care' institutions in Australia in the 20th century.

**When:** 14 March – 29 June 2014, 9:30am – 5pm

**Where:** Western Australian Maritime Museum, Victoria Quay





## Dolphin escort for a queen

*When gigantic cruise liner Queen Mary 2 departed Fremantle on 12 February, a dolphin rode the bow wave.*

Dolphins are often seen in Fremantle Inner Harbour and have previously ridden bow waves of large ships entering or leaving the harbour. In maritime superstition, dolphins swimming with ships are a sign of good luck.

Fremantle Ports is providing significant funding over three years for the Coastal and Estuarine Dolphin Project run by Murdoch and Curtin universities. The aim is to study the health and ecology of the dolphins in the Swan River, Inner Harbour and Cockburn Sound to help ensure the long-term conservation of bottlenose dolphins in Perth metropolitan waters.

Barb Green, of the Cockburn Sound Management Council, has started up a shore-based community monitoring group for dolphins around Rockingham. If you regularly walk along the beach and would like to help to the dolphin research project, call the Council (9591 3827 or 0427 886 237).

QM2 is scheduled to return to Fremantle on Thursday 6 March.



## Biggest lifter in port

*The world's biggest semi-submersible barge Gavea Lifter, with a deadweight of 50,000 tonnes, made an impressive entrance to Fremantle recently for lay-up and survey work.*

The giant lifter has been at the Chevron wharf at AMC Henderson for the past couple of years, positioned on the seabed to provide temporary wharf space during construction of the new AMC Wharf 5a Berth.

Gavea Lifter is one of the few ships that can transport two jack-up rigs in one load. With a length of 196m and beam of 46m, it has a cargo deck of 9000 square metres and when fully submerged has 9.3m of water above its main cargo deck!

Semi-submersible barges are used for the dry transportation of floating units, as well as for dry-docking large objects in remote areas where no suitable dock is available.



The world's biggest heavy lifter, Gavea Lifter, passes busy container berths on North Quay

## Fireys get up close to a container ship

Senior firefighting personnel recently spent an afternoon visiting a container ship in port.

Fremantle Ports organised for Department of Fire and Emergency Services firefighters to visit K Line ship Margaret River Bridge while it was at a Patrick terminal berth.

The container ship familiarisation consolidated material presented in a training course for

trainers/assessors in Marine Firefighting. It also gave participants the opportunity to review the vessel's Fire Control Plan, International Shore Connection and Fixed Fire Suppression Systems, and determine compatibility of firefighting equipment.

The firefighters met the ship's captain and toured the spotlessly clean ship from the engine room to the bridge.



Margaret River Bridge crew (in orange) with firefighters (L to R): Station Officer (SO) Mark Graham, SO Neil MacKintosh, SO Richard Pearcey, Fremantle Fire District Officer Mark Feast, SO Rob Lake, and, foreground, Firefighter Brenton Baird



# Education report

## Youth art on show in Rockingham

More than 300 students, teachers, parents, and industry and local government representatives are expected to fill Rockingham's Gary Holland Community Centre on 19 March for the annual Kwinana Industries Youth Art Awards presentation ceremony.

The awards, coordinated by Fremantle Ports, will celebrate the creativity of 110 talented finalists from 11 schools. Their artworks include paintings, sculpture, ceramics, photography, film, woodwork, and fashion and textiles.

The exhibition of all 110 artworks will be open to the public at the Gary Holland Community Centre on weekdays from 20-27 March.

Participating schools are Gilmore College, Hamilton Senior High School, Kolbe Catholic College, Living Waters Lutheran College, Peter Carnley Anglican Community School, Rockingham Senior High School, Safety Bay Senior High School, Seton Catholic College, South Coast Baptist College, Tranby College and Warnbro Community High School.

Prizes and merit awards will be presented in three art categories with two scholarships awarded by the City of Rockingham.

Fremantle Ports and Kwinana Industries Council have once again sponsored this year's awards program which also has continuing strong support from the City of Rockingham and Sound Telegraph.



Chair by Kurtis Hatton, of Tranby College



Ceramic bust by Chelsea Smith, of Safety Bay Senior High School

## Anzac Centenary theme for Fremantle Ports Maritime Day on 8 November

Fremantle Ports Maritime Day 2014 will be held on Saturday 8 November.

The theme of this year's Maritime Day will be the Anzac Centenary and the maritime contribution to Australia's involvement in WWI.

Although the majority of Australian troops who served in WWI left from Albany, most of the West Australian troops left from Fremantle. On 31 October 1914, the day before the Albany convoy departed, two transport ships sailed from Fremantle. The *Ascanius* carried the WA 11th Infantry Battalion and the *Medic* carried the WA 8th Field Artillery Battery along with some South Australian troops. On 3 November 1914 they joined up with the Albany convoy at sea.

At Maritime Day there will be about 35 expo-type booths in B Shed and space on Victoria Quay available for hire.

Last year about 15,000 people visited Maritime Day to tour a range of ships and boats, find out about maritime careers, sample fantastic food from a cook-off, look at historical port photos and enjoy the free entertainment.



**What:** Fremantle Ports Maritime Day 2014

**Where:** Victoria Quay

**When:** 10am to 4pm Saturday 8 November 2014

**Contact:**

If your business, community group or school is interested in being involved in Maritime Day, either inside B Shed or outside on Victoria Quay, contact Jane Edwards (9430 3373 or [jane.edwards@fremantleports.com.au](mailto:jane.edwards@fremantleports.com.au)).



Lady Gaga by Jamie Whittingham, of Hamilton Senior High School