

AERODROME CHART-ICAO

10° 42' 40" N  
99° 21' 42" E

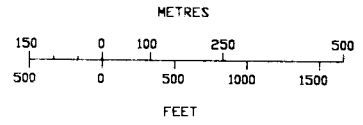
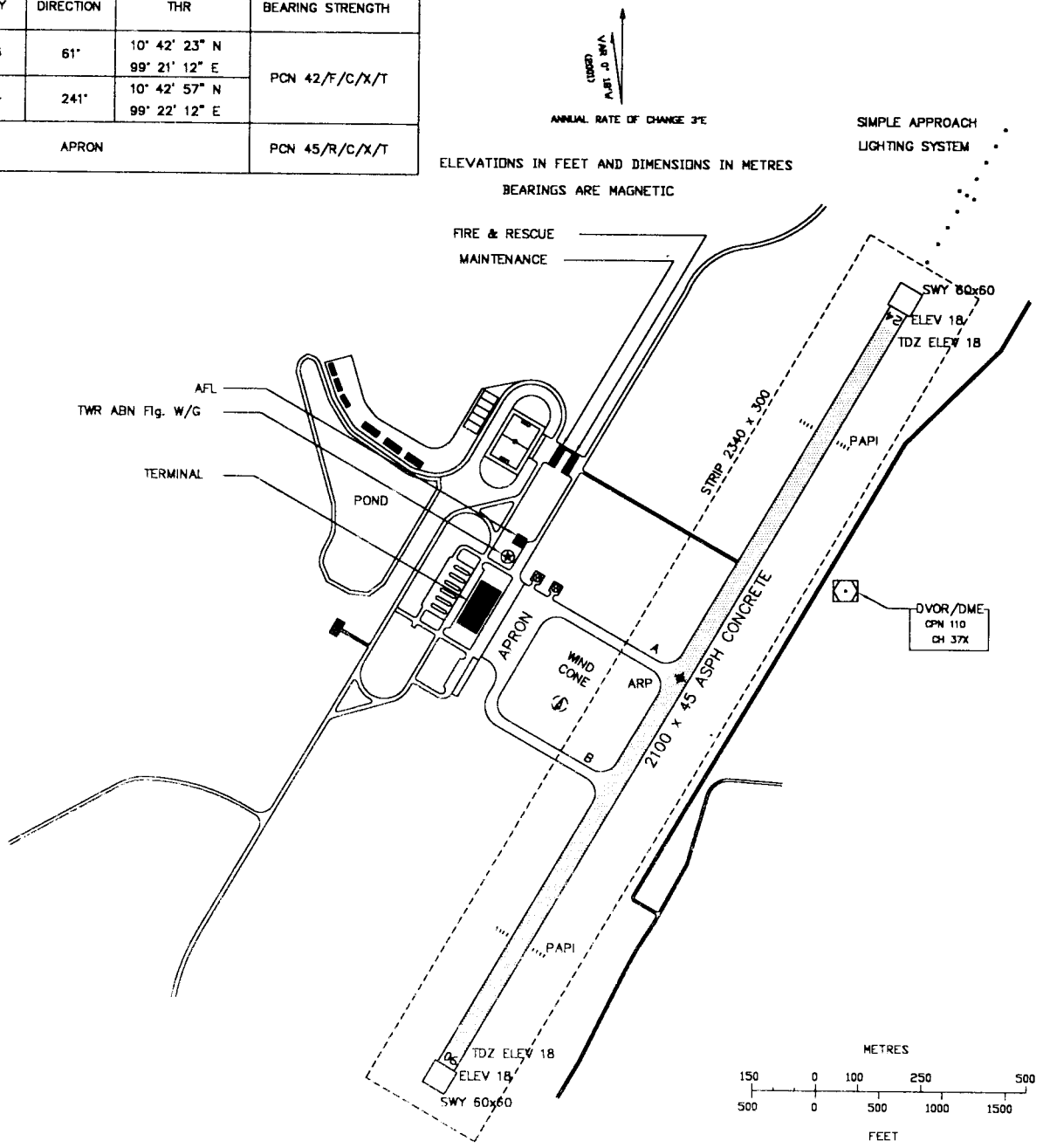
ELEV 18 ft  
5.5 m

TWR 122.15

CHUMPHON / Chumphon

RWY	DIRECTION	THR	BEARING STRENGTH
06	61°	10° 42' 23" N	PCN 42/F/C/X/T
		99° 21' 12" E	
24	241°	10° 42' 57" N	PCN 45/R/C/X/T
		99° 22' 12" E	
APRON			PCN 45/R/C/X/T

ELEVATIONS IN FEET AND DIMENSIONS IN METRES  
BEARINGS ARE MAGNETIC

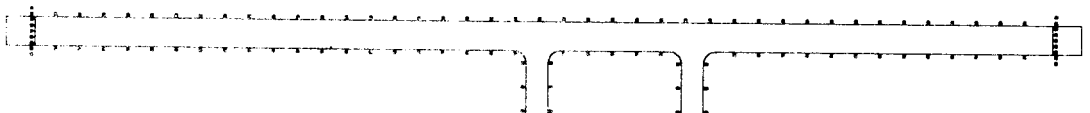


Remark : COORDINATE ARE WGS-84

MARKING AIDS RWY 06/24 AND EXIT TWY



LIGHTING AIDS RWY 06/24 AND EXIT TWY



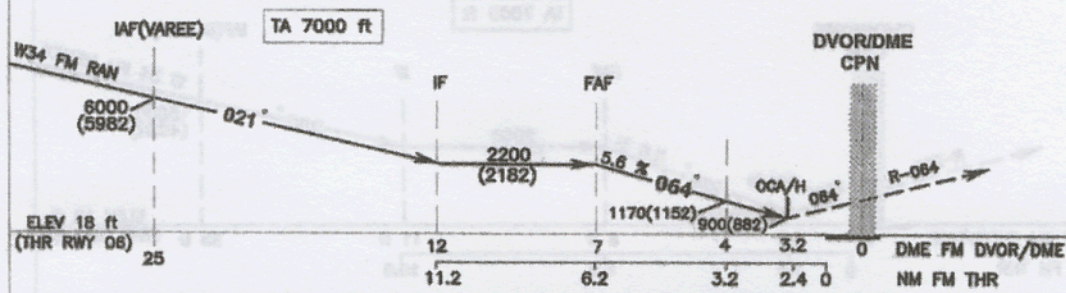
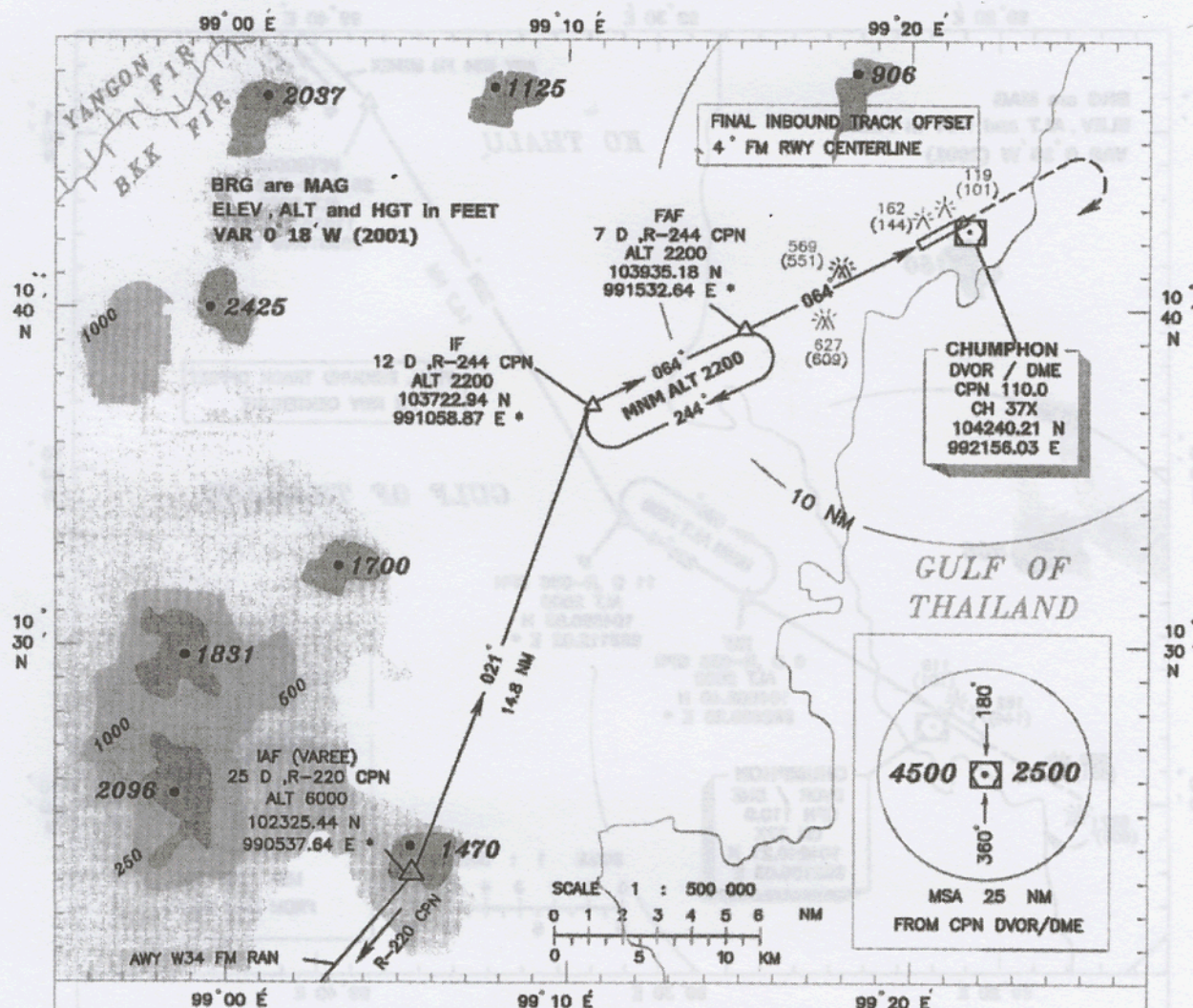
THIS PAGE INTENTIONALLY LEFT BLANK

**INSTRUMENT**  
**APPROACH**  
**CHART - ICAO**

**AERODROME ELEV 18 ft**  
**HEIGHTS RELATED TO**  
**AERODROME ELEV**

APP : 129.6 ,305.4  
TWR : 122.15 ,236.6

**CHUMPHON / Chumphon**  
**VOR/DME**  
**RWY 06**



**MISSED APPROACH :** Climb on track 064 to the DVOR/DME then climb on R-064 to 2200(2182) ft and turn right back to FAF 2200(2182) and hold.

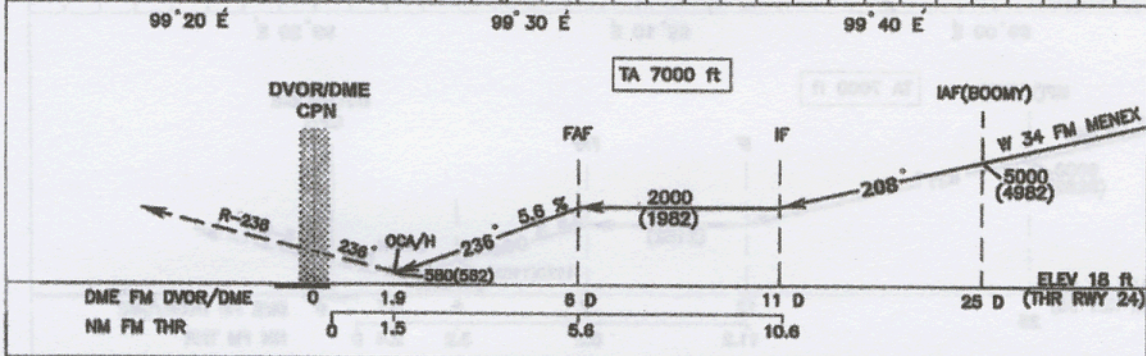
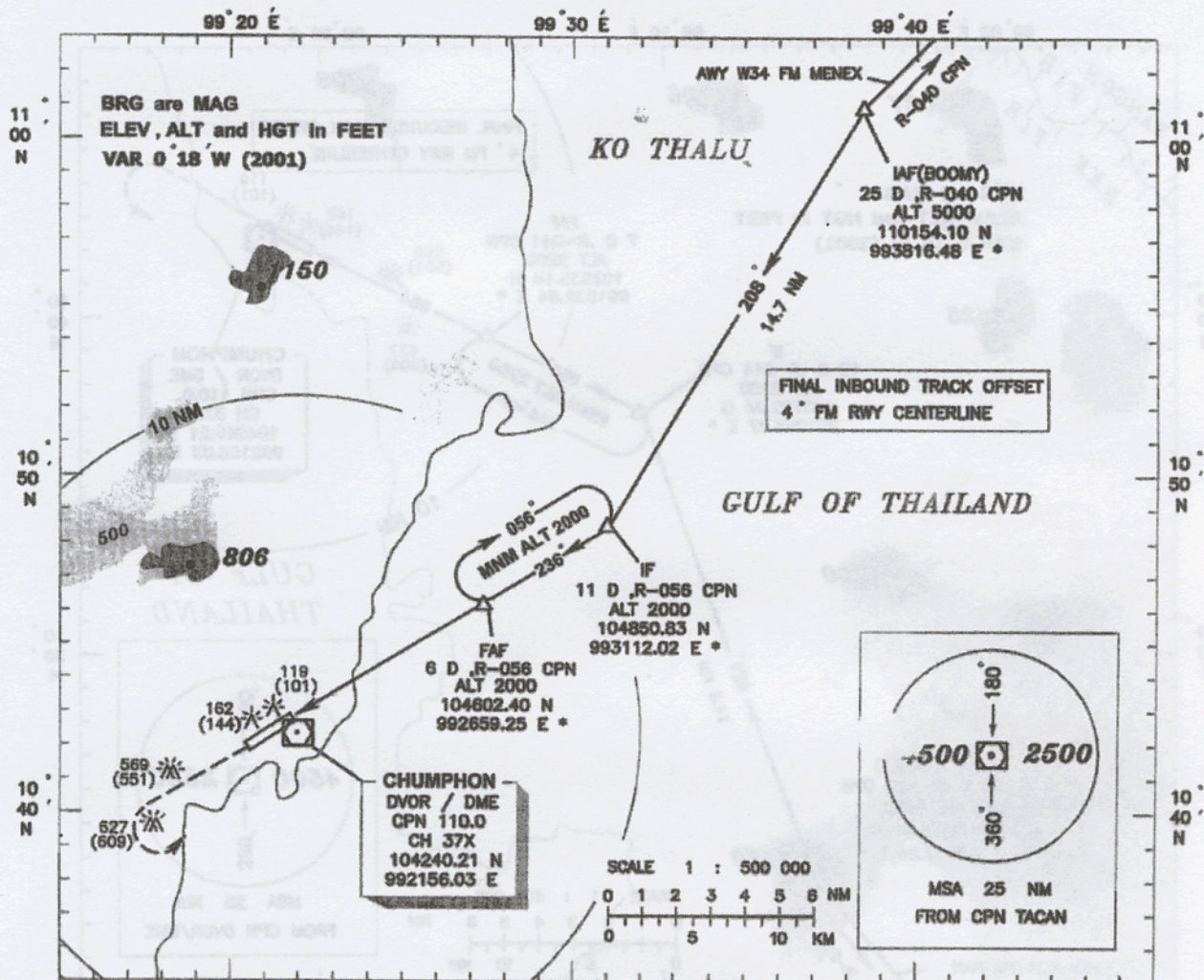
Distance (CPN)	2 D					3 D					4 D					5 D					6 D									
	A	B	C	D		A	B	C	D		A	B	C	D		A	B	C	D		A	B	C	D						
OCA/H						490 (472)					830 (812)					1170 (1152)					1510 (1492)					1850 (1832)				
Straight-in approach	900(882)																													
Circling	900 (882)					1070 (1052)					1250 (1232)					1530 (1512)					Ground speed (GS) knot									
	Rate of descent (ft / min)					510					680					795					910					1020				

INSTRUMENT  
APPROACH  
CHART - ICAO

AERODROME ELEV 18 ft  
HEIGHTS RELATED TO  
AERODROME ELEV

APP : 129.6 ,305.4  
TWR : 122.15 ,236.6

CHUMPHON / Chumphon  
VOR/DME  
RWY 24



**MISSED APPROACH:** Climb on track 236° to the DVOR/DME then climb on R-236 to 1400(1382) ft and turn left to FAF 2000(1982) ft and hold.

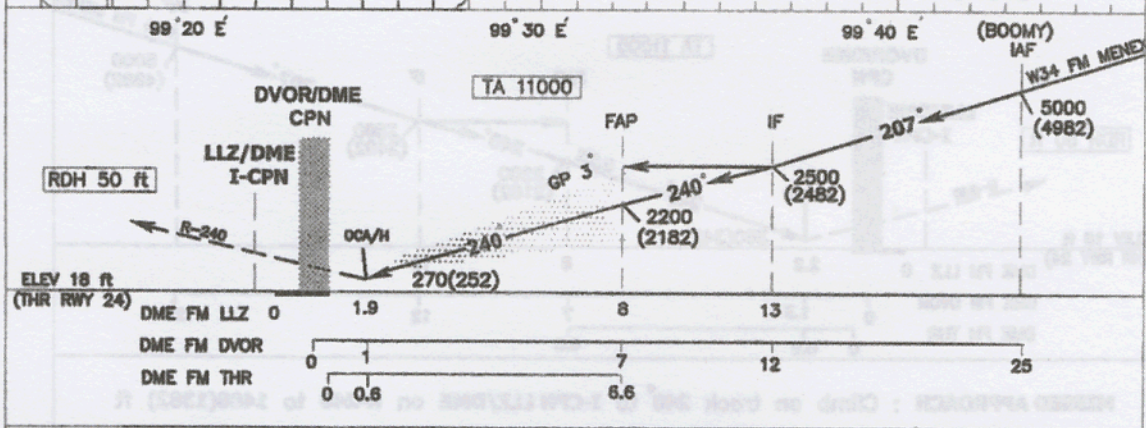
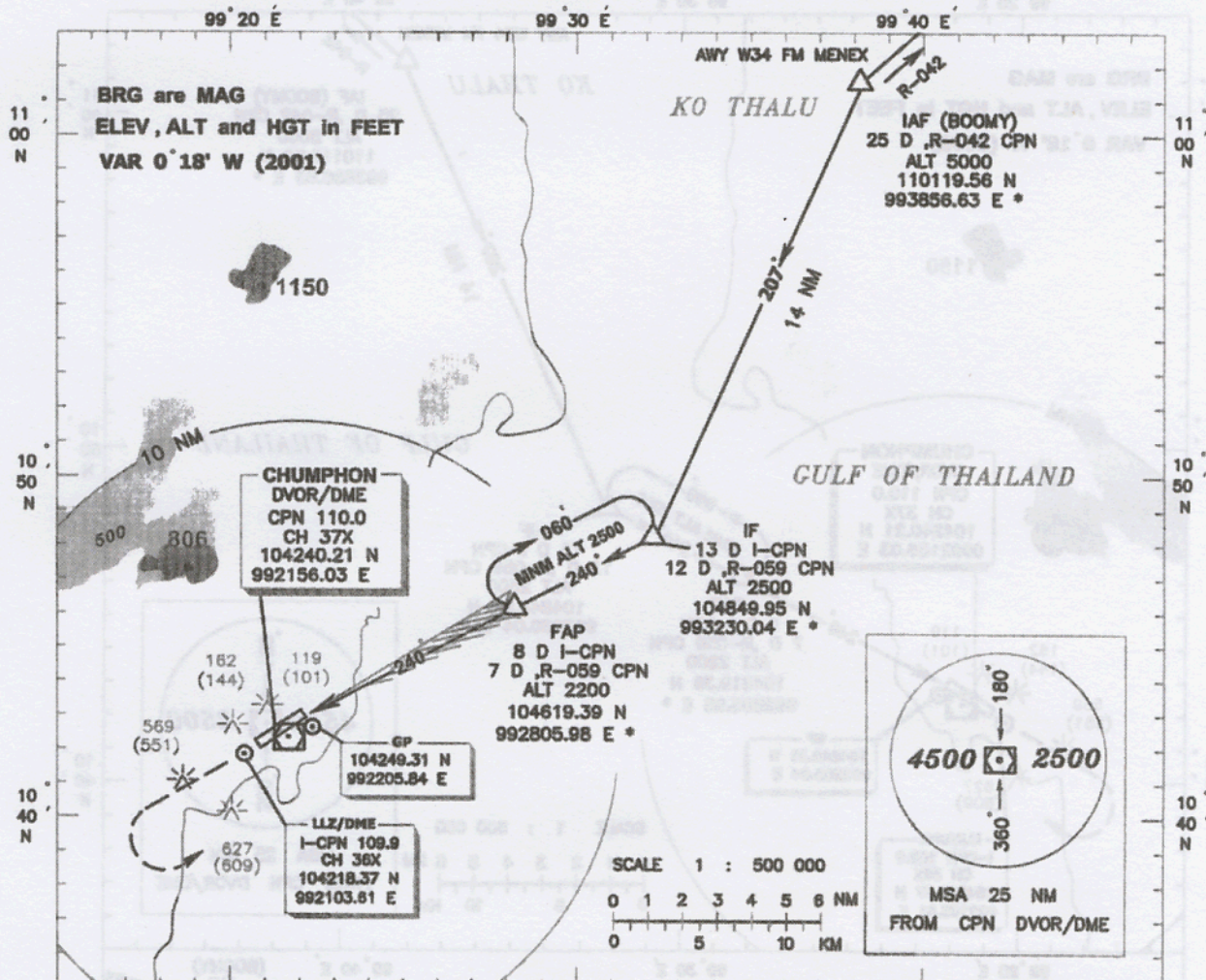
					Distance (CPN)										
					2 D	3 D	4 D	5 D							
OCA/H					A	B	C	D	Altitude (Height)	620 (602)	980 (942)	1300 (1282)	1640 (1622)		
Straight-in approach					580 (562)				Ground speed (GS)	knot	100	120	140	160	180
Circling					650 (632)	1070 (1052)	1250 (1232)	1530 (1512)	Rate of descent (ft / min)	570	680	795	910	1020	

INSTRUMENT  
APPROACH  
CHART - ICAO

AERODROME ELEV 18 ft  
HEIGHTS RELATED TO  
AERODROME ELEV

APP : 129.6 ,305.4  
TWR : 122.15 ,236.6

CHUMPHON / Chumphon  
ILS/DME  
RWY 24



**MISSED APPROACH :** Climb on track 240° to I-CPN LLZ/DME on R-240 to 1400(1382) ft and turn left climb to FAP at 2500(2482) ft and hold.

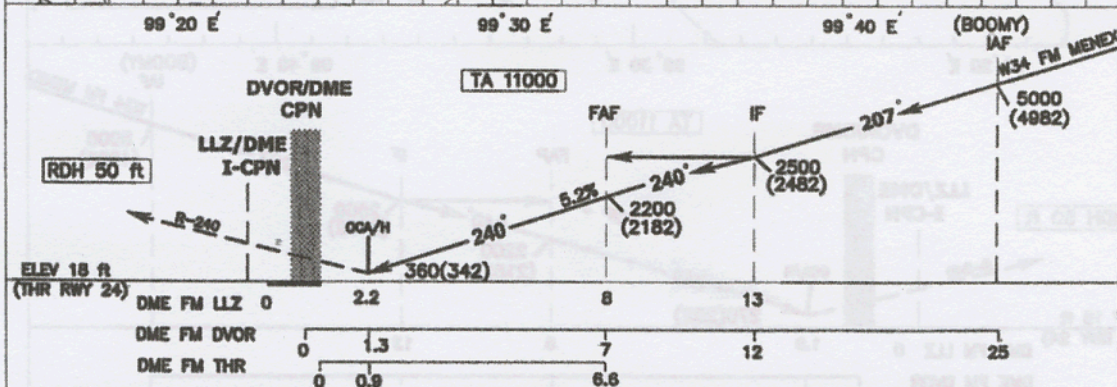
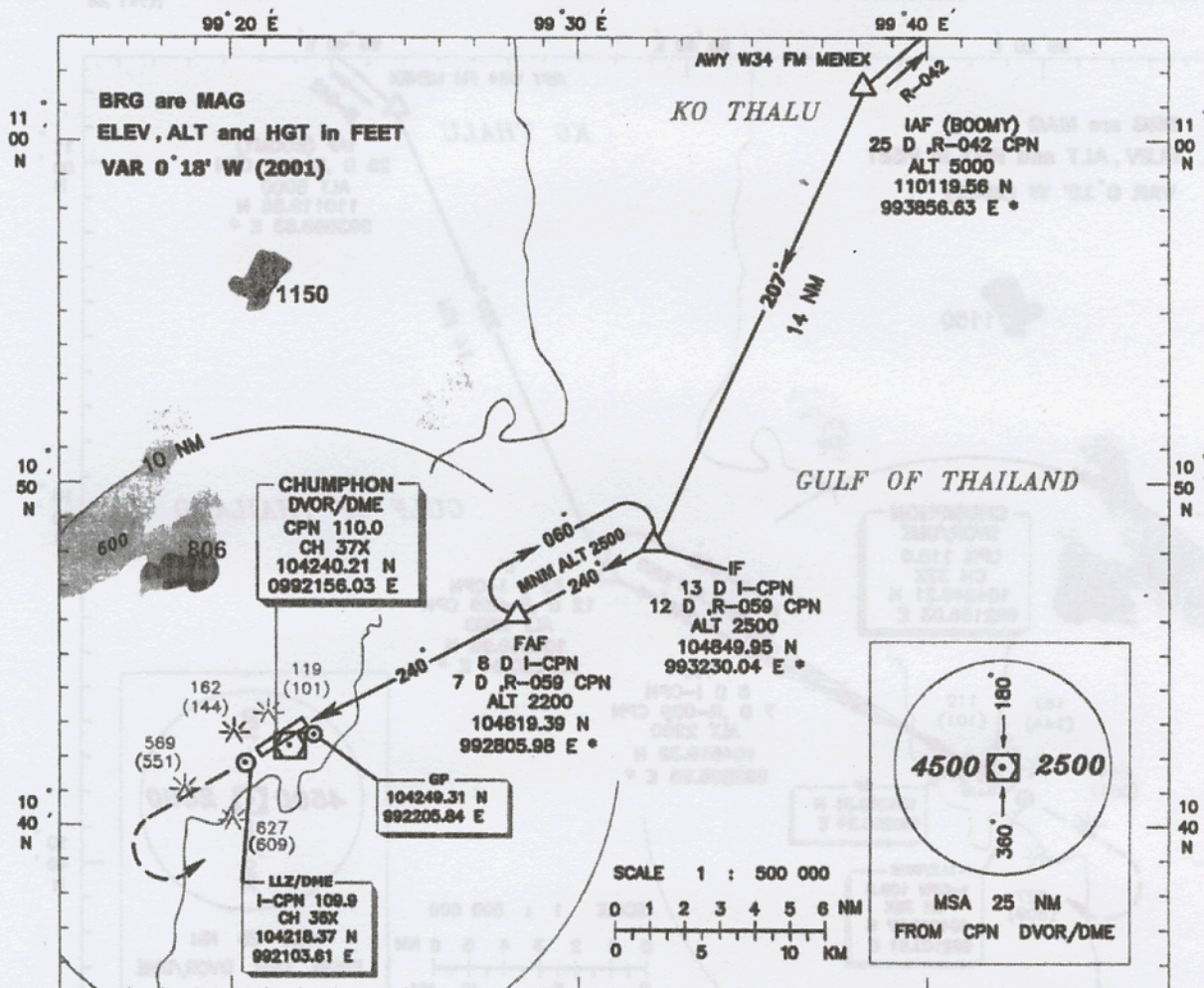
OCA/H		A	B	C	D
Straight - in approach	CAT I	270(252)			
Circling		650 (632)	1070 (1052)	1250 (1232)	1530 (1512)

INSTRUMENT  
APPROACH  
CHART - ICAO

AERODROME ELEV 18 ft  
HEIGHTS RELATED TO  
AERODROME ELEV

APP : 129.6 ,305.4  
TWR : 122.15 ,236.6

CHUMPHON / Chumphon  
LLZ/DME  
RWY 24



**MISSED APPROACH :** Climb on track 240° to I-CPN LLZ/DME on R-240 to 1400(1382) ft and turn left climb to FAF at 2500(2482) ft and hold.

	Distance FM I-CPN				Ground Speed (knot)	Rate of descent (ft/min)	FAF-MAPT 5.8 NM
	2 D	3 D	4 D	5 D			
Altitude (Height)	290 (272)	610 (592)	930 (912)	1250 (1232)	100	525	3:28
Altitude (Height)	1565 (1547)	1885 (1867)			120	630	2:54
Altitude (Height)					140	740	2:29
Altitude (Height)					160	845	2:10
Altitude (Height)					180	950	1:56
Altitude (Height)					200	1055	1:44

	LLZ ONLY	380(342)				Ground Speed (knot)	Rate of descent (ft/min)	FAF-MAPT 5.8 NM
		A	B	C	D			
OCA/H								
Straight - in approach		650 (632)	1070 (1052)	1250 (1232)	1530 (1512)			
Circling								