



Entrelac Wrap

KTV2014C



Designed by Mari Lynn Patrick.

Directions are for size Small; changes for sizes Medium and Large are in parentheses.

Wrap measures 33 x 18 1/2 (44 x 24, 55 x 29 1/2)", excluding ties.

RED HEART® "Soft Yarn®": 2 (3, 5) Balls 2541 Blue Sky.

Crochet Hook: 6mm [US J-10].

Yarn needle.

GAUGE: 14 sts = 4"; 14 rows = 4"; 1 triangle (measured along one short side) = 5 1/2". **CHECK YOUR GAUGE. Use any size hook to obtain the gauge.**

SPECIAL ABBREVIATION:

sc2tog = [Draw up a loop in next sc] twice, yarn over and draw through all 3 loops on hook – 1 sc decreased.

NOTES:

1. The wrap is worked in entrelac, a method which creates a basketweave effect by interconnecting sections that are worked in different directions. Work begins with a corner triangle. The first row of stitches for the next square or triangle is worked along an edge of the previous square or triangle.
2. When working the first row of each piece, always hold the work with the right side facing.
3. Refer to the assembly diagram for the construction steps. The numbers in the assembly diagram indicate the order in which the triangles and squares should be worked. Begin with piece number 5 (3, 1). The arrows indicate the direction in which each square or triangle should be worked.
4. After squares and triangles have been worked, sew the remaining seams.

FIRST TRIANGLE: Ch 20.

Row 1 (Right Side): Sc in 2nd ch from hook and in each ch across; turn – 19 sc.

Row 2: Ch 1, working in *front loops only*, sc in each sc across to last 3 sts; sc2tog, sc in last sc; turn – 18 sc.

Row 3: Ch 1, working in *back loops only*, sc in first sc, sc2tog, sc in each sc across; turn – 17 sc.

Rows 4-17: Repeat Rows 2 and 3 seven more times – 3 sc.

Row 18: Ch 1, working in *front loops only*, sc in first sc, sc2tog; turn – 2 sc.

Row 19: Ch 1, working in *back loops only*, sc2tog – 1 sc. Do NOT turn; do NOT fasten off.

FIRST SQUARE-Row 1 (Right Side): Pivot to work along short side of first triangle; with right side still facing ch 1, work 19 sc evenly spaced along side of triangle; turn.

Row 2 (Wrong Side): Ch 1, working in *front loops only*, sc in each sc across; turn.

Row 3: Ch 1, working in *back loops only*, sc in each sc across; turn.

Rows 4-19: Repeat Rows 2 and 3 eight more times. Fasten off.

NEXT TRIANGLE- Row 1 (Right Side): With right side facing, and following assembly diagram, join yarn in corner of previous square; ch 1, work 19 sc evenly spaced across side of square.

Rows 2-19: Repeat Rows 2-19 of first triangle.



©2008 Coats & Clark
P.O. Box 12229
Greenville, SC 29612-0229

For more ideas & inspiration —

www.redheart.com
www.crochettoday.com

www.coatsandclark.com
www.knitandcrochettoday.com

NEXT SQUARE Row 1 (Right Side): With right side still facing, and following assembly diagram, work Rows 1-19 same as First Square across short side of last triangle.

REMAINING TRIANGLES AND SQUARES: Continue working triangles and squares as established following diagram: **NOTE:** For size Small, work pieces 5-16, for size Medium, work pieces 3-22, and for size Large, work pieces 1-30. Location of the next piece determines whether you will need to fasten off between pieces. To reduce the number of yarn tails, whenever possible do not fasten off, instead pivot to work along the edge of the appropriate piece.

FINISHING: Sew seams as indicated in diagram. Weave in all ends.

TIES: Ch 28 (for first tie).

Rnd 1 (Right Side): Tr in 4th ch from hook and in next 4 ch, dc in next 5 ch, hdc in next 5 ch, sc in each ch across; hold shawl with right side facing and work sc evenly spaced across top edge (long edge); ch 26 (for second tie), sc in 2nd ch from hook and in next 9 ch, hdc in next 5 ch, dc in next 5 ch, tr in next 5 ch; pivot to work in free loops along opposite side of ch (for second tie), 2 tr in first ch, tr in next 4 ch, dc in next 5 ch, hdc in next 5 ch, sc in next 10 ch; work sc evenly spaced along short edge

of shawl to point, 3 sc in point of shawl, work sc evenly spaced along other short edge of shawl; working in free loops on opposite side of ch (for first tie), sc in next 10 ch, hdc in next 5 ch, dc in next 5 ch, tr in next 4 ch, 2 tr in last ch; join with a slip st in top of beginning ch.

Rnd 2: Ch 2, working in *back loops only*, hdc in each st around, working 3 hdc in point of shawl; join with a slip st in top of ch-2; **TURN.**

Rnd 3: Ch 2, working in *front loops only*, hdc in each st around, working 3 hdc in point of shawl; join; **TURN.**

Rnd 4: Ch 2, working in opposite direction (left to right for right-handers, right to left for left-handers), * Reverse sc in next st, ch 2, slip st in next st; repeat from * around; join in top of ch-2. Fasten off. Weave in ends.



RED HEART® “Soft Yarn®, Art. E728 available in solid colors – 5oz (140g), 256yd (234m) or prints – 4oz (113g), 204yd (187m) balls.

ABBREVIATIONS: **ch** = chain; **dc** = double crochet; **hdc** = half double crochet; **sc** = single crochet; **st(s)** = stitch (es); **tr** = treble crochet; * = repeat whatever follows the * as indicated; **[]** = work directions in brackets the number of times specified.

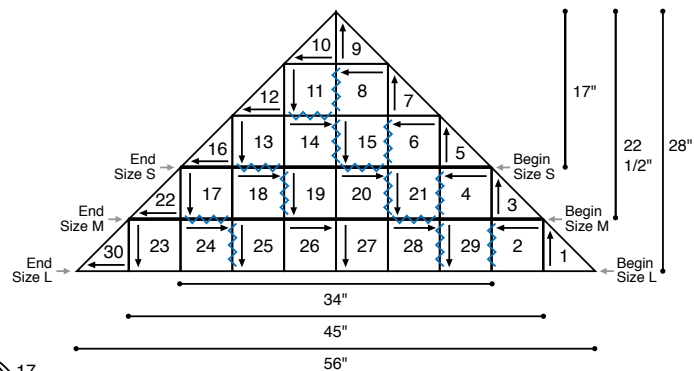
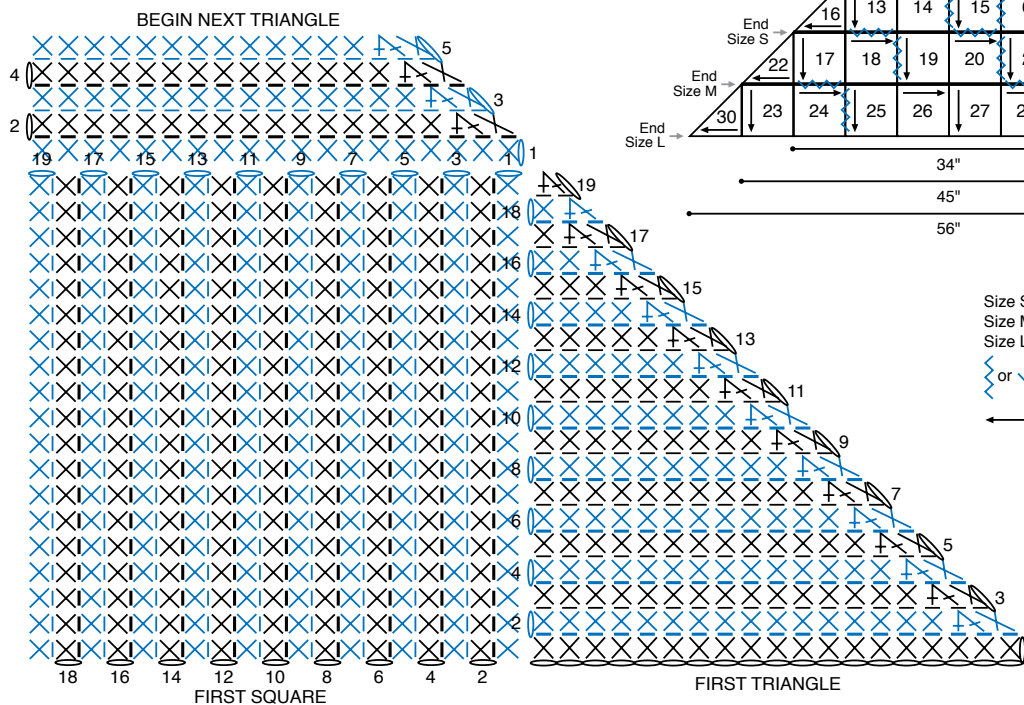


CHART KEY
 Size S – work pieces 5-16
 Size M – work pieces 3-22
 Size L – work pieces 1-30
 [] or [] = seam line (sew edges together)
 ← = with RS facing, work piece in direction of arrow



©2008 Coats & Clark
 P.O. Box 12229
 Greenville, SC 29612-0229

For more ideas & inspiration —

www.redheart.com
www.crochettoday.com

www.coatsandclark.com
www.knitandcrochettoday.com