

Lower Goulburn National Park



Visitor Guide

The Goulburn River is lined with River Red Gum (*Eucalyptus camaldulensis*) and is an important wildlife corridor linking the mountains of the Great Dividing Range to the Murray River. The river is highly scenic with its narrow strips of riparian vegetation along its meandering banks. The adjoining River Red Gum forests and woodlands provide a striking contrast to the adjacent farmland.



Royal Spoonbill

The Victorian Government created the Lower Goulburn National Park, along with other new and expanded parks, in June 2010 to protect and enhance the River Red Gum forests in Victoria.

Enjoying the park

The forests along the Goulburn River, particularly areas close to Shepparton, are popular for camping, fishing, canoeing, bushwalking and a variety of other recreational activities.

Canoeing – conditions for canoeing are enhanced by the summer releases of water from Lake Eildon.

Sightseeing and picnicking – enjoy many scenic views along the river from high river banks.

Swimming is popular, particularly near townships where the river is easily accessible.

Fishing - This stretch of the Goulburn is fairly shallow with plenty of snags, so preferred boating is by smaller craft. Steep banks predominately line the river, with sandbars and access points dotted throughout. Informal boat ramps are scattered along the river at popular access points.

Murray Cod, Golden Perch and Spiny Freshwater Crayfish are found in the river.

A current Victorian Recreational Fishing Licence is required for fishing in waters south of the Murray River including the Goulburn River. A NSW Freshwater Recreation Fishing Licence is required for fishing in the Murray River.

River Red Gums

River Red Gum forests have high natural, cultural and economic values. These forests are coming under increasing pressure from climate change, drought and reduced water flows in the northern rivers. Protecting this precious environment relies on balancing economic and recreational activities with preserving its natural beauty and values.

River Red Gums line the Goulburn River for most of its length. These iconic trees have been known to reach 45 metres and live for more than 500 years. The trees need periods of flooding and can survive inundation for months. Their seeds are washed onto higher ground during a flood and germinate and grow before the next flood reaches them. Hollows and broken branches provide nesting for galahs, cockatoos, cockatiels and various parrots, while fallen branches provide habitat for other animals.

Be fire ready and stay safe

On days of forecast Code Red Fire Danger this park will be closed for public safety.

If you are already in the park you should leave the night before or early in the morning for your own safety.

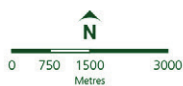
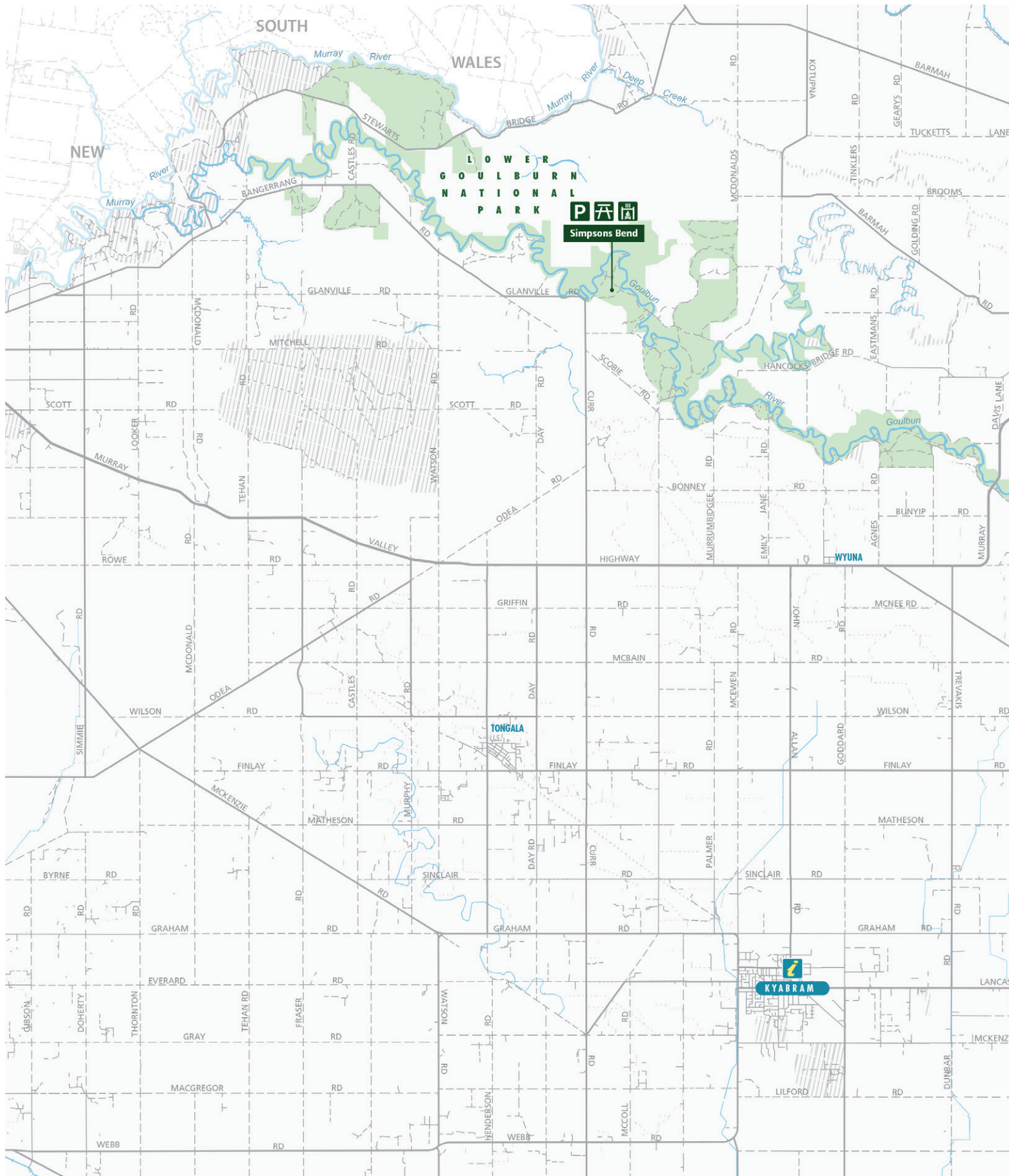
Closure signs will be erected and rangers will patrol where possible, however you may not receive a personal warning that the park is closed so check by calling **13 1963** or visit **www.parks.vic.gov.au**.

For up to date information on fires in Victoria or general fire safety advice call the **Victorian Bushfire Information Line** on **1800 240 667** or visit **cfa.vic.gov.au**.

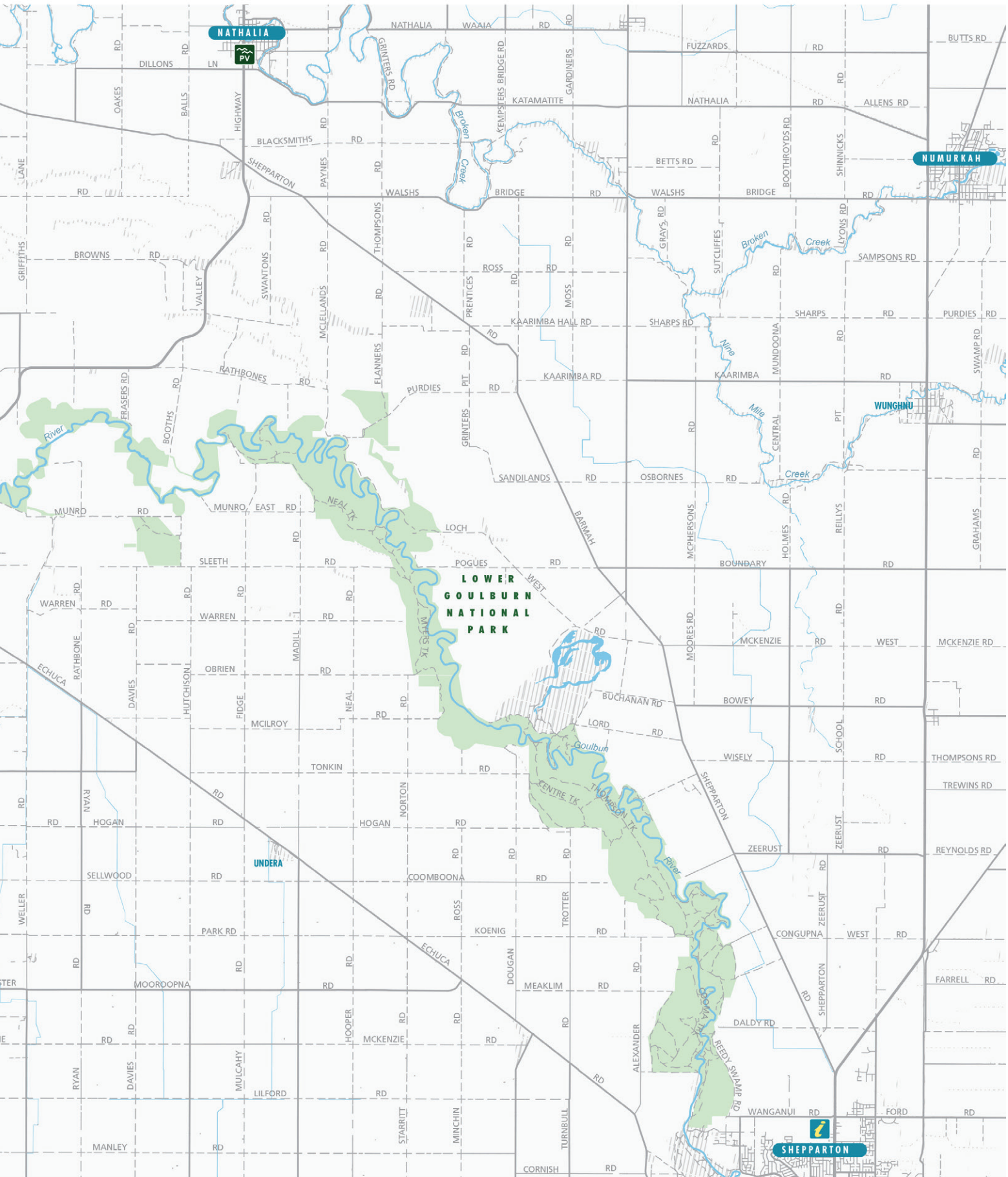
For more information call Parks Victoria on 13 1963 or visit www.parks.vic.gov.au



Lower Goulburn National Park



- | | | | |
|---------------------|-------------|---------------|------------------------------|
| Tourist information | Highway | 4WD | Lower Goulburn National Park |
| Parking | Main road | Walking track | Public land |
| Picnic table | Sealed road | Unsealed road | Waterbody |
| BBQ (wood) | | | |



www.parks.vic.gov.au

Disclaimer: Parks Victoria does not guarantee that this data is without flaw of any kind and therefore disclaims all liability which may arise from you relying on this information.

Data source acknowledgements: State Digital Mapbase, The State of Victoria and Department of Sustainability and Environment.

Cartography by Parks Victoria February 2013
 For mobile App search for Avenza PDF Maps

For further information

Call Parks Victoria on **13 1963**
or visit www.parks.vic.gov.au

Visitor Information Centre
Victoria Park Lake
Wyndham Street
Shepparton Vic 3630
Toll Free - 1800 808 839

Caring for the environment

Help us look after your park
by following these guidelines:

Please take rubbish with you for
recycling or disposal

All plants, animals, historical and
archaeological sites and
geographic features are
protected by law

Dogs and other pets are not
permitted in the park

Firearms are prohibited

No fires are permitted on a day of
Total Fire Ban. Portable gas or
electric barbecues may be used
provided:

- a 3 metre area is cleared of
anything flammable
- at least 10 litres of water is
available for immediate use
- an adult is in attendance at
all times

Lower Goulburn National Park is
in the **Northern Country Total Fire
Ban District**

**It is your responsibility to know if
it is a day of Total Fire Ban.**

If in doubt call the **Victorian
Bushfire Information Line
on 1800 240 667**

Collect only dead wood from the
ground for campfires

Vehicles, including motor bikes,
may only be used on formed open
roads. Drivers must be licensed
and vehicles registered and
roadworthy

Healthy Parks Healthy People

*Visiting a park can improve
your health, mind, body and
soul. So, with over four million
hectares of parkland available
to Victorians, why not escape
to a park today!*



Aboriginal people

The Yorta Yorta people have a long association with the Lower Goulburn National Park. Scarred trees, mounds, stone artefact scatters and middens are some of the sites of significance that can be found in this park, particularly along the lower reaches of the river. The park contains over 196 registered Aboriginal archaeological sites.

The Yorta Yorta people have had long-held aspirations to be involved in caring for country and have an active role in the management of Lower Goulburn National Park. Traditional owner knowledge assists with management of the land and recognises the unique relationship of the traditional owners to the land.



Goulburn Heritage River

The Goulburn Heritage River was declared in 1992 in recognition of its unique natural, recreational, scenic and cultural values.

It is Victoria's second largest river in terms of length, catchment area and annual flows.

River flows are highly regulated by two major storages – Lake Eildon and Goulburn Weir.

The Goulburn Weir was the first major irrigation scheme in Australia.

Major flooding now occurs once every ten years, while before regulation, flooding would have occurred at least every two years.

Plants and animals

The River Red Gum forests and Yellow and Grey Box woodlands between Shepparton and the Murray River are notable in terms of size, lack of disturbance, diversity and botanical 'intactness'.

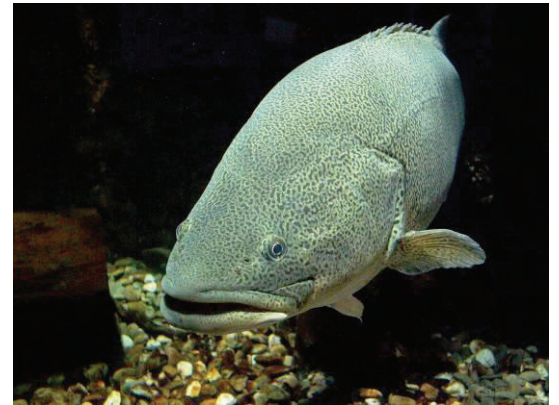
The River Red Gum forest with areas of grassy and shrubby understory, plus the large number of wetlands, billabongs provides habitat for a number of significant fauna species including Brush-tailed Phascogales, Barking Owls, Royal Spoonbills and Musk Ducks.

Areas containing tree hollows and mature Silver Wattle contain habitat of national significance for the rare Squirrel Glider.

Flora species of note include the endangered Grey Billy-buttons, Small Scurf-peas and Jericho Wiregrass.

Reedy Swamp, north of Shepparton, when filled, is a haven for waterbirds including the Glossy Ibis and the Royal Spoonbill.

Unlike many Victorian rivers, the Goulburn River below Shepparton remains largely undisturbed. Instream debris and large snags provide valuable habitat for Murray Cod and other fish species.



Murray Cod

June 2013

Printed on Australian-made 100% recycled paper