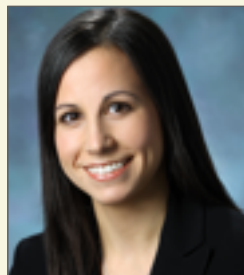


JOHNS HOPKINS CLINICAL FACULTY



TERRY MCGEE, PT, DSCPT, FAAOMPT
Residency Clinical Director & Mentor

As a Fellowship Trained Orthopaedic Manual Therapist, Terry is responsible for ensuring world-class clinical practice in outpatient orthopedic and manual therapy amongst Johns Hopkins physical therapists. Terry is a Fellow of the American Academy of Orthopedic Manual Therapists, Member of the APTA, Certified Level II K-Vest Golf Swing Evaluator, and is a Titleist Performance Institute, Level II Certified Golf Medical Professional.



JILL MAY, PT, DPT, OCS
Residency Coordinator

Jill has been in outpatient orthopedic practice for over 5 years. Jill is an active member in the APTA, Performing Arts Medical Association, and International Association of Dance Medicine and Science. She is the Program Coordinator for the Performing Arts Physical Therapy Services at Johns Hopkins Hospital and presents on the topic of dance-related injuries

ABOUT US

Johns Hopkins Hospital:

- Ranked #1 by *US News & World Reports* for the past 21 out of 23 years.
- Founded in 1889, the 1,051 bed academic medical institution offers Acute Care, Comprehensive Integrated Inpatient, and Outpatient Rehabilitation Therapy Services.

JHH Rehabilitation Therapy Services Clinic:

- 14 Clinical FTE's of PT/PTA and OT
- 17,000 patient visits annually
- Specialty Programs/Technology: Hand, Pelvic Health, Performing Arts, Oncology and Lymphedema, Rehabilitation Pilates, Motion Capture, Anti-Gravity Treadmill, surface EMG

George Washington University:

- Founded in 1821 through an Act of the Congress to fulfill George Washington's vision.
- Faculty are actively engaged in APTA, advocacy, education, practice, and research
- Small class sizes ensure favorable faculty-to-student ratios.
- Advanced clinical simulation lab.

University of Southern California

- Top ranked PT education program in the US since 2004.
- Residency program started in 1998.
- The leader in residency didactic programming in the US

JOHNS HOPKINS
REHABILITATION THERAPY SERVICES CLINIC
GREEN SPRING STATION
10753 FALLS ROAD
PAVILION II, SUITE 235
LUTHERVILLE, MD 21093

JILL MAY, PT, DPT
RESIDENCY COORDINATOR
ORTHOPEDIC RESIDENCY
JMAY17@JHMI.EDU
(410) 583-2665



JOHNS HOPKINS
MEDICINE



REHABILITATION THERAPY
SERVICES CLINIC

ORTHOPAEDIC
PHYSICAL THERAPY
RESIDENCY

Clinical Excellence, Education, Research

UNIVERSITY OF SOUTHERN CALIFORNIA



JOE GODES, PT, DPT, OCS
Residency Didactic Education Coordinator

Joe will be coordinating the efforts of USC to provide the didactic instruction to support the clinical residency. In addition to his activities with USC, Joe is the ICF-based Clinical Practice Guidelines Coordinator for the Orthopaedic Section of the APTA, Inc. He is also a member of the Board of Directors for the Journal of Orthopaedic and Sports Physical Therapy. He has served on the Orthopaedic Specialty Council of the ABPTS, on the APTA's Committee on Clinical Residency and Fellowship Credentialing, and on the Orthopaedic Section's Board of Directors.

GEORGE WASHINGTON UNIVERSITY



JENNIFER HALVAKSZ, PT, DPT, OCS
Residency Academic Director

Jennifer has over 10 years of clinical experience in acute care and outpatient orthopedic settings. She received her Board Certification as an Orthopedic Clinical Specialist in 2005. She began her career as a formal educator while practicing as a faculty clinician at the University of Southern California. Her teaching expertise includes musculoskeletal evaluation/intervention in both entry level and continuing education arenas. Her research interests include development of clinical reasoning and curricular outcomes.

PROGRAM BENEFITS

Salary and Full-Time benefits

Intensive supervised & independent study

One-on-one clinical mentoring

Integration of EBP into daily clinical practice

Small group classroom and lab instruction

Academic teaching assistantship at GWU

Preparation & Payment for OCS Exam

DETAILS OF THE MENTORED EXPERIENCE

- Evaluation and treatment of the orthopedic patient in the outpatient setting.
- Exposure to various practice models through a combination of clinical experiences at Johns Hopkins.
- Structured learning opportunities with physicians in office visits and/or surgical observations.
- Participation in scholarly activity such as case study publication and conference presentations.
- Teaching opportunities in the George Washington University DPT program.
- Participation in academic physical therapist and physician-led research.
- Specialized Programs within orthopedics include Manual Therapy, Performing Arts, Sports, Golf, Pilates, and Hand Therapy

LEARNING OBJECTIVES

This residency emphasizes universal learning objectives related to knowledge, skills, and abilities of the Orthopedic Specialist. In addition, leadership and teaching objectives will provide the opportunity to explore specific subspecialty interests unique to each residency candidate.



PROGRAM HIGHLIGHTS

EXPERIENCE	LOCATION	HOURS
CLINICAL PRACTICE	JOHNS HOPKINS	1300
DIDACTICS	USC / APTA	290
TEACHING EXPERIENCE	GWU	250
MENTORSHIP	JOHN HOPKINS	150
SCHOLARLY ACTIVITY	GWU JOHNS HOPKINS	50