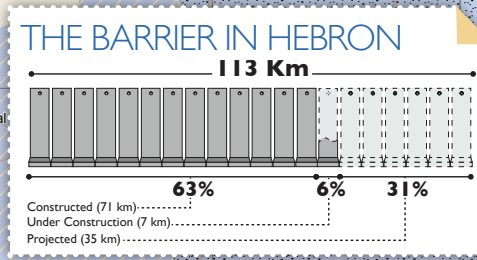


### HEBRON CLOSURES

⊗	Checkpoints	13
⊗	Green Line Checkpoints	2
⊗	Partial Checkpoints	6
▲	Earthmounds	56
■	Roadblocks	23
⊗	Road Gates	28
+	Trenches	-
⊗	Earth Walls	-
⊗	Road Barriers	1 - 15m
<b>TOTAL</b>		<b>127*</b>

\*Only 11 of 95 closures in H2 Area are included in the total closure count of Hebron.

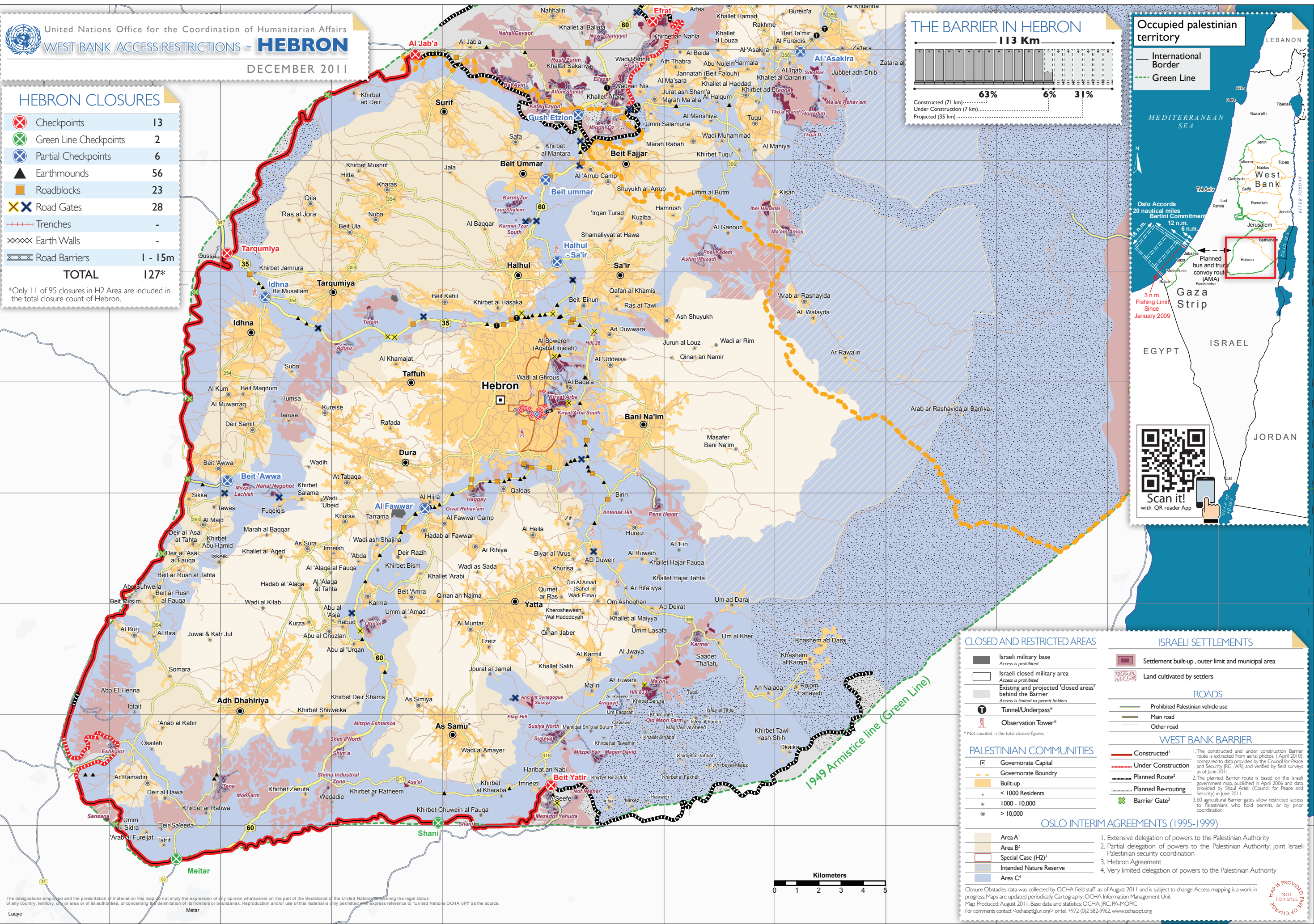


### Occupied Palestinian territory

International Border  
Green Line

Oslo Accords  
20 nautical miles  
Bertini Commitment  
12 n.m.  
6 n.m.  
Planned bus and truck convey route (AMA)  
3 n.m. Fishing Limit Since January 2009

LEBANON  
WEST BANK  
JERUSALEM  
Gaza Strip  
EGYPT  
ISRAEL  
JORDAN



### CLOSED AND RESTRICTED AREAS

- Israeli military base  
Access is prohibited
- Israeli closed military area  
Access is prohibited
- Existing and projected "closed areas" behind the Barrier  
Access is limited to permit holders
- ⊗ Tunnel/Underpass\*
- ⊗ Observation Tower\*

\* Not counted in the total closure figures.

### ISRAELI SETTLEMENTS

- Settlement built-up, outer limit and municipal area
- Land cultivated by settlers

### ROADS

- Prohibited Palestinian vehicle use
- Main road
- Other road

### WEST BANK BARRIER

- Constructed<sup>1</sup>
- Under Construction
- Planned Route<sup>2</sup>
- Planned Re-routing
- ⊗ Barrier Gate<sup>3</sup>

### PALESTINIAN COMMUNITIES

- Governorate Capital
- Governorate Boundary
- Built-up
- < 1000 Residents
- 1000 - 10,000
- > 10,000

### OSLO INTERIM AGREEMENTS (1995-1999)

- Extensive delegation of powers to the Palestinian Authority
- Partial delegation of powers to the Palestinian Authority; joint Israeli-Palestinian security coordination
- Hebron Agreement
- Very limited delegation of powers to the Palestinian Authority

Closure Obstacles data was collected by OCHA field staff as of August 2011 and is subject to change. Access mapping is a work in progress. Maps are updated periodically. Cartography: OCHA Information Management Unit  
 Map Produced: August 2011. Base data and statistics: OCHA, JRC, PA-MOPIC  
 For comments contact <a href="mailto:ochaapt@un.org">ochaapt@un.org</a> or tel. +972 (0)2 582-9962, www.ochaapt.org

The designations employed and the presentation of material on this map do not imply the expression of any opinion whatsoever on the part of the Secretariat of the United Nations concerning the legal status of any country, territory, city or area or of its authorities, or concerning the delimitation of its frontiers or boundaries. Reproduction and/or use of this material is only permitted with express reference to "United Nations OCHA oPt" as the source.

MAP IS PROVIDED FOR SALE ONLY