

WELCOME INFORMATION ORIENTATION FLOOR PLAN

WELCOME TO THE STEDELIJK!

The Stedelijk Museum Amsterdam is the largest museum of modern and contemporary art and design in the Netherlands. The historic building, which dates from 1895, has been completely renovated and expanded, with a futuristic new wing designed by Benthem Crouwel Architects, facing the Museumplein. We are thrilled to welcome you to our new museum building, now providing more space than ever for our renowned collections, experimental exhibitions, and engaging public programs.

WHAT CAN YOU SEE?

Historic Museum Building: Permanent Collection and Temporary Exhibitions

Ground floor, historic building

Visual Art – 1850 to 1960: The historic museum building presents modern masterpieces arranged in a loose chronology. Among the highlights are works by Mondriaan, Malevich, Kandinsky, Chagall, and Van Doesburg. Key works from the photography, prints, and drawing collections are also featured in temporary exhibitions. In gallery 0.16, have a look at the colorful Appel-bar painted by Karel Appel in 1951.

Design – 1900 to the present: Organized by theme, an impressive survey of the design collection features furniture, glass, ceramics, jewelry, posters, printed matter, and textiles from 1900 to the present. Enjoy applied art and industrial and graphic design by internationally acclaimed figures, including Berlage, Cassandre, Gispen, Zwart, Rietveld, Sandberg, Crouwel, Wirkkala, and Baas.

Top floor, historic building

1950 to the present: Explore the top floor and enjoy a remarkable range of examples in the permanent collection that date from 1950 to the present. Marvel at iconic works like *La Perruche et la Sirène* by Matisse, *The Beanery* by Kienholz, and *Bellevue II* by Warhol. Also discover recent acquisitions by major artists such as Flavin and Dumas.

New Wing: Exhibitions

On the top floor of the Stedelijk's new wing, the program includes temporary exhibitions of work by internationally renowned contemporary artists and designers. With a surface area of 1100 m², the basement gallery is the largest support-free, open-plan gallery in the Netherlands and is devoted to spectacular large-scale works, ambitious installations, and new acquisitions.

WHAT CAN YOU DO?

Audio Tour

Audio tours bring the collections and exhibitions to life. We offer specially designed audio tours for adults (NL/EN/DE/FR/ES/IT) and families (NL/EN). Price: € 5 for adults, € 2,50 for family members and school children.

Children and Families

Our Family Lab welcomes children and their families. Enjoy videos from our collection, make a drawing, or follow a Family Trail for an adventure through the museum.

Tours & Educational Programs

Discover the collections and the building in one hour with free Get-on-Board tours on Sundays, or book a custom guided tour with the Blikopeners, for instance. You can find all the details and information about our many educational programs at www.stedelijk.nl or in the education brochures.

Public Programs

Every Thursday, Friday, and Sunday, the Stedelijk holds lectures and performances by internationally acclaimed speakers and artists. You can also attend our film evenings and other events. A full guide to our activities is available at the Information Desk and on our website, www.stedelijk.nl.

Join us. Become a Member Today

We warmly invite everyone who loves the Stedelijk Museum to become a Member. Stedelijk Members enjoy a wide range of benefits, including invitations to exclusive events, discounts on various museum products, and free access to the museum with one guest. Visit www.stedelijk.nl to join or ask one of our staff members at the Information Desk for more details.

GENERAL INFORMATION

Main Entrance
Museumplein 10, Amsterdam

Hours: Museum and Store
Tuesday & Wednesday, 11:00 a.m.–5:00 p.m.
Thursday, 11:00 a.m.–10:00 p.m.
Friday, Saturday, & Sunday, 10:00 a.m.–6:00 p.m.
Closed on Mondays
Open on national holidays

Admission
€ 15 Adults
€ 7,50 Students, CJP (cultural youth pass)
€ 7,50 Youths aged 13–18
€ 3,50 High school students in a group (registered in advance)
€ 30 Family ticket (max. 6 persons)
free Children under 12
free Teachers with a Docentenpas (teacher's pass)
free Museumkaart, ICOM, Stadspas, I amsterdam City Card
free Members of the Stedelijk Museum, members of Vereniging Rembrandt

Restaurant Stedelijk
Enjoy a delicious lunch or three-course dinner in the Restaurant Stedelijk, which also offers a spacious outdoor terrace. The restaurant is open to museum visitors and non-visitors.
Hours: Monday–Friday, 9:30 a.m.–12:00 a.m.
For reservations, call +31 (0)20 573 26 51.

Zadelhoff Café
The Zadelhoff Café on the first floor of the historic building is an ideal place to relax with a cup of coffee, delicious pastry, or sandwich. The Zadelhoff Café is open during the Stedelijk's regular museum hours, exclusively for museum visitors.

Stedelijk Store
The Stedelijk Store offers an appealing selection of books on modern and contemporary art and design, as well as a variety of gifts, design items, and souvenirs. The store is open to museum visitors and non-visitors.

Library
The library of the Stedelijk Museum ranks among the best art history libraries in western Europe. It is situated on the lower floor of the new wing and is accessible with a valid museum admission ticket.
Hours: Tuesday – Saturday, 12:00 p.m.–5:00 p.m.

Disabled Access
The Stedelijk Museum is wheelchair accessible. Elevators are available for wheelchairs and children's strollers. If you need assistance, ask one of our staff members.

Museum Policy
Large bags and umbrellas must be left at the Cloakroom. No food or drink is permitted in the exhibition spaces. Photography is allowed for your personal use; flash photography and tripods are not permitted. If you would like to make notes or sketches, pencils, paper, and clip boards are available free of charge at the Information Desk and the Family Lab.

The Stedelijk would love to hear your thoughts about the museum. Your questions, comments, and suggestions are welcome. Please send them to info@stedelijk.nl.

Contact
info@stedelijk.nl
t +31 (0)20 573 29 11
www.stedelijk.nl
facebook.com/stedelijk
twitter.com/stedelijk

Not planning to keep this brochure? Kindly hand it in to the Information Desk for someone else to use.

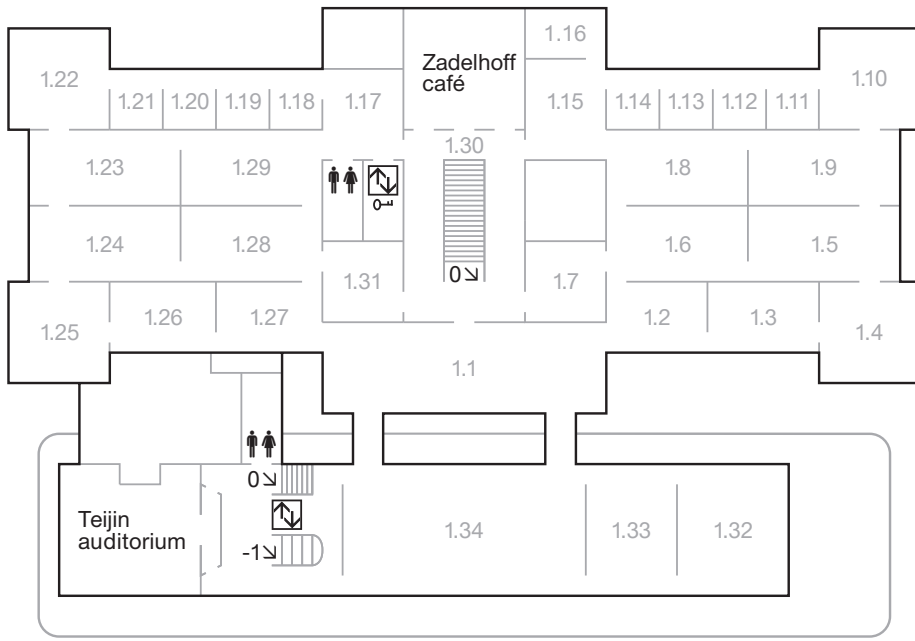
Subject to alteration

Principal sponsor



TOP FLOOR

Art after 1950 / Exhibitions

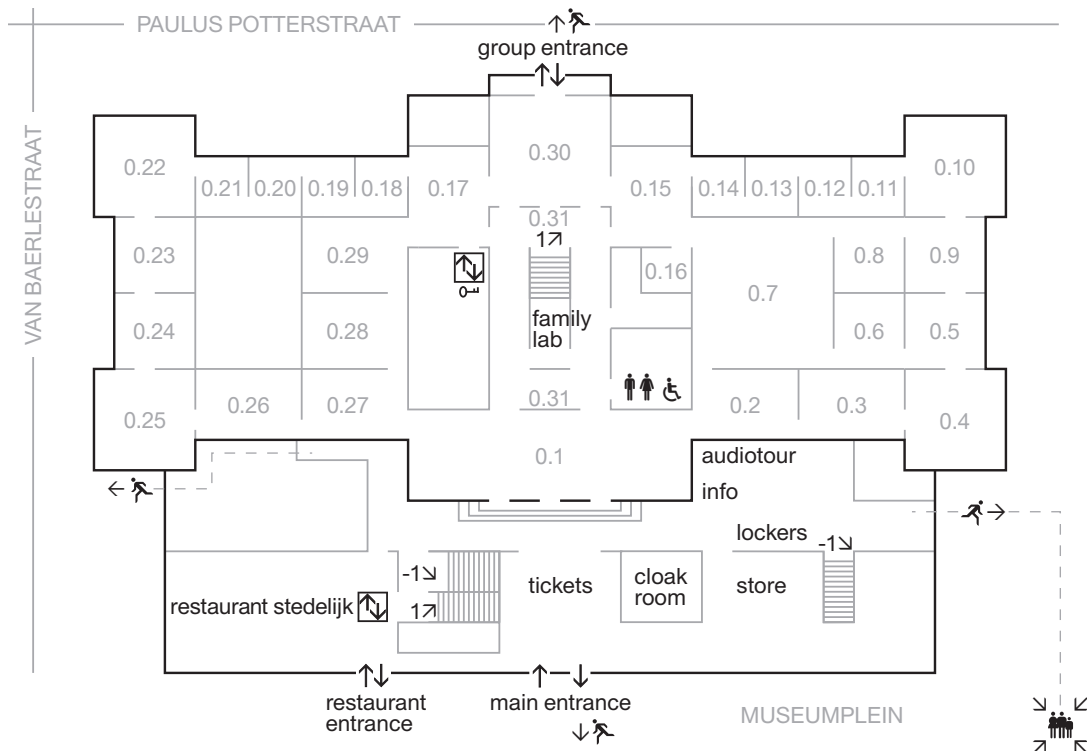


Sponsored galleries:

- | | |
|----------------------------------|--|
| 1.1 IMC Gallery | 1.27 PostNL Gallery |
| 1.18 Aalberts Industries Cabinet | 1.30 Stedelijk Museum Business Club Hall |
| 1.19 Houthoff Buruma Cabinet | 1.34 VandenEnde Foundation Gallery |
| 1.21 Heren2 Cabinet | |

GROUND FLOOR

Art before 1960 / Design



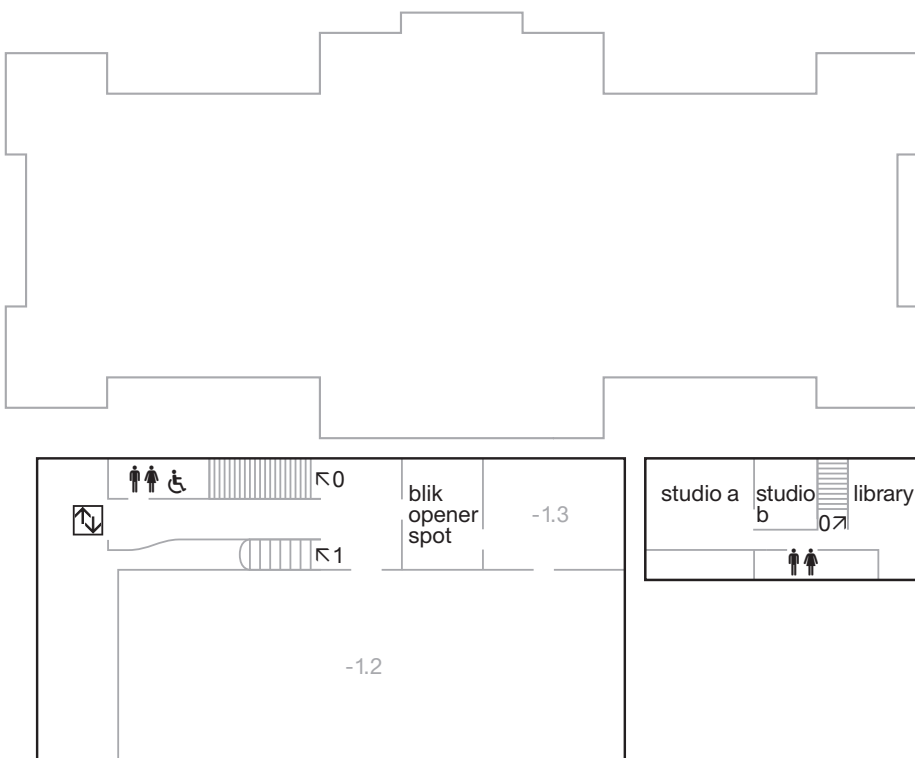
Sponsored galleries:

Entrance area:

- | | | |
|-------------------|---|-------------------------------------|
| Schiphol Entrance | 0.1 Audi Gallery | 0.21 Bouwfonds Cultuurfonds Cabinet |
| Randstad Desk | 0.4 Family Ribbink-Van Den Hoek Gallery | 0.22 MAB Development Gallery |
| ANWB Desk | 0.20 P2 Group Cabinet | |

BASEMENT

Exhibitions



Sponsored galleries:

- | |
|-----------------------|
| -1.2 ABN AMRO Gallery |
|-----------------------|